
Northamptonshire Archaeology

Edgcote House, Northamptonshire

New lift pit

June 2006



Pat Chapman

June 2006

Report 06/89

Northamptonshire Archaeology

2 Bolton House

Wootton Hall Park

Northampton NN4 8BE

w. www.northantsarchaeology.co.uk

t. 01604 700493/4

f. 01604 702822

e. sparry@northamptonshire.gov.uk



OASIS REPORT FORM

PROJECT DETAILS		
Project name	Edgcote House, Northamptonshire, new lift pit, report 06/89	
Short description (250 words maximum)	Northamptonshire Archaeology were commissioned by Johnston Cave Associates, Architects, on behalf of Mr and Mrs D Allen, to undertake a watching brief at Edgcote House, Northamptonshire, during the digging of a pit in the basement to install a replacement lift. No archaeological features or artefacts were found within the re-excavated lift pit.	
Project type (eg DBA, evaluation etc)	Watching brief	
Site status (none, NT, SAM etc)	Grade 1 listed building	
Previous work (SMR numbers etc)	No	
Current Land use	House	
Future work (yes, no, unknown)	No	
Monument type/ period	Post-medieval house	
Significant finds (artefact type and period)	None	
PROJECT LOCATION		
County	Northamptonshire	
Site address (including postcode)	Edgcote House, Edgcote, Banbury, South Northamptonshire, OX17 1AG	
Study area (sq.m or ha)	1.17sq m	
OS Easting & Northing (use grid sq. numbers)	SP 505 479	
Height OD		
PROJECT CREATORS		
Organisation	Northamptonshire Archaeology	
Project brief originator	South Northamptonshire Council	
Project Design originator	CgMs	
Director/Supervisor	Pat Chapman	
Project Manager	Tony Walsh	
Sponsor or funding body	Mr and Mrs Allen	
PROJECT DATE		
Start date	2/6/2006	
End date	14/6/2006	
ARCHIVES	Location (Accession no.)	Content (eg pottery, animal bone etc)
Physical		
Paper		
Digital		
BIBLIOGRAPHY		
Journal/monograph, published or forthcoming, or unpublished client report (NA report)		
Title		
Serial title & volume		
Author(s)		
Page numbers		
Date		

STAFF

Project Manager	Tony Walsh BA
Fieldwork and text	Pat Chapman BA, CMS, PIFA
Illustrations	Andy Chapman BSc, MIFA, Pat Chapman

QUALITY CONTROL

	Print name	Signed	Date
Checked by	Tony Walsh		
Verified & Approved by	Andy Chapman		

CONTENTS

- 1 INTRODUCTION**
- 2 METHODOLOGY**
- 3 THE EXCAVATED EVIDENCE**
- 4 CONCLUSION**
- BIBLIOGRAPHY**

Figures

- Fig 1 Location plan
- Fig 2 Edgcote House, the basement (from plan supplied by Johnston Cave Associates)
- Fig 3 The stairwell and lift shaft (from plan supplied by Johnston Cave Associates)

Plates

- Frontispiece Edgcote House (by Alistair F Nisbet, 16 March 2004)
- Plate 1 Lift installation pit showing concrete raft and rubble
- Plate 2 Lift installation pit showing subsoil/natural below raft

EDGCOTE HOUSE, NORTHAMPTONSHIRE

NEW LIFT PIT

JUNE 2006

Abstract

Northamptonshire Archaeology were commissioned by Johnston Cave Associates, Architects, on behalf of Mr and Mrs D Allen, to undertake a watching brief at Egdcote House, Northamptonshire, during the digging of a pit in the basement to install a replacement lift. No archaeological features or artefacts were found within the re-excavated lift pit.

1 INTRODUCTION

Northamptonshire Archaeology were commissioned by Johnston Cave Associates Architects, on behalf of Mr and Mrs D Allen, to carry out a watching brief during the hand excavation, by Knowles and Son Ltd, for a new lift base within Edgcote House, Northamptonshire, planning application no: S/2006/0078/LB (NGR SP 505 479, Fig 1).

Edgcote House is a grade 1 listed building which replaced an older building purchased in 1543 by William Chauncy. In 1742 the earlier house passed to Richard Chauncy, a London merchant, who had the house rebuilt between 1748-54 by William Jones. A lift was installed in the 1930s for the benefit of the then occupant.

Planning permission was applied for by the present owners, under PPG15, for the installation of a new lift. The new lift takes the place of the old one and involves minimal intervention into the historic fabric. The old access points which were protected by timber gates will be infilled by reusing balusters and handrails taken from the new access points which will be protected by gates matching the original balustrading. The new lift required the enlargement of the existing pit at basement level to increase the usable area of the lift for passenger use.

The solid geology of the area comprises the Middle and Upper Lias clays and silts and sandy limestones and Banbury Ironstone (Dury 1963, 13-15, www.bgs.ac.uk).

2 METHODOLOGY

The existing flagstones were taken out and set aside. Working to measurements supplied by the architects, Knowles and Son Ltd broke out the existing concrete surface in the required area. Below the raft the deposits were excavated by hand under archaeological supervision until the required depth was reached (CgMs 2006, 7, paragraph 3.13).

3 THE EXCAVATED EVIDENCE

Below the original concrete raft (Plate 1) the new lift pit was excavated to the new required level, 600mm below the raft. There was no solid bedrock, but a clean sterile compacted reddish brown sand (Plate 2). The raft itself was only 60-80mm thick and was partially covered by a single course of frogged bricks stamped with the initials LBC, the London Brick Company. Above this was a layer of rubble composed of broken brick and stone approximately 460mm thick just below the flagstones.

4 CONCLUSION

There were no archaeological remains within the new lift pit and therefore no hindrance to the installation of the new lift.

BIBLIOGRAPHY

GgMs Consulting January 2006 *Impact and Justifying Statement, In respect of Edgcote House, Northamptonshire*, ND/6759

Dury, G, 1963 *The East Midlands and the Peak*, Thomas Nelson and Sons Ltd

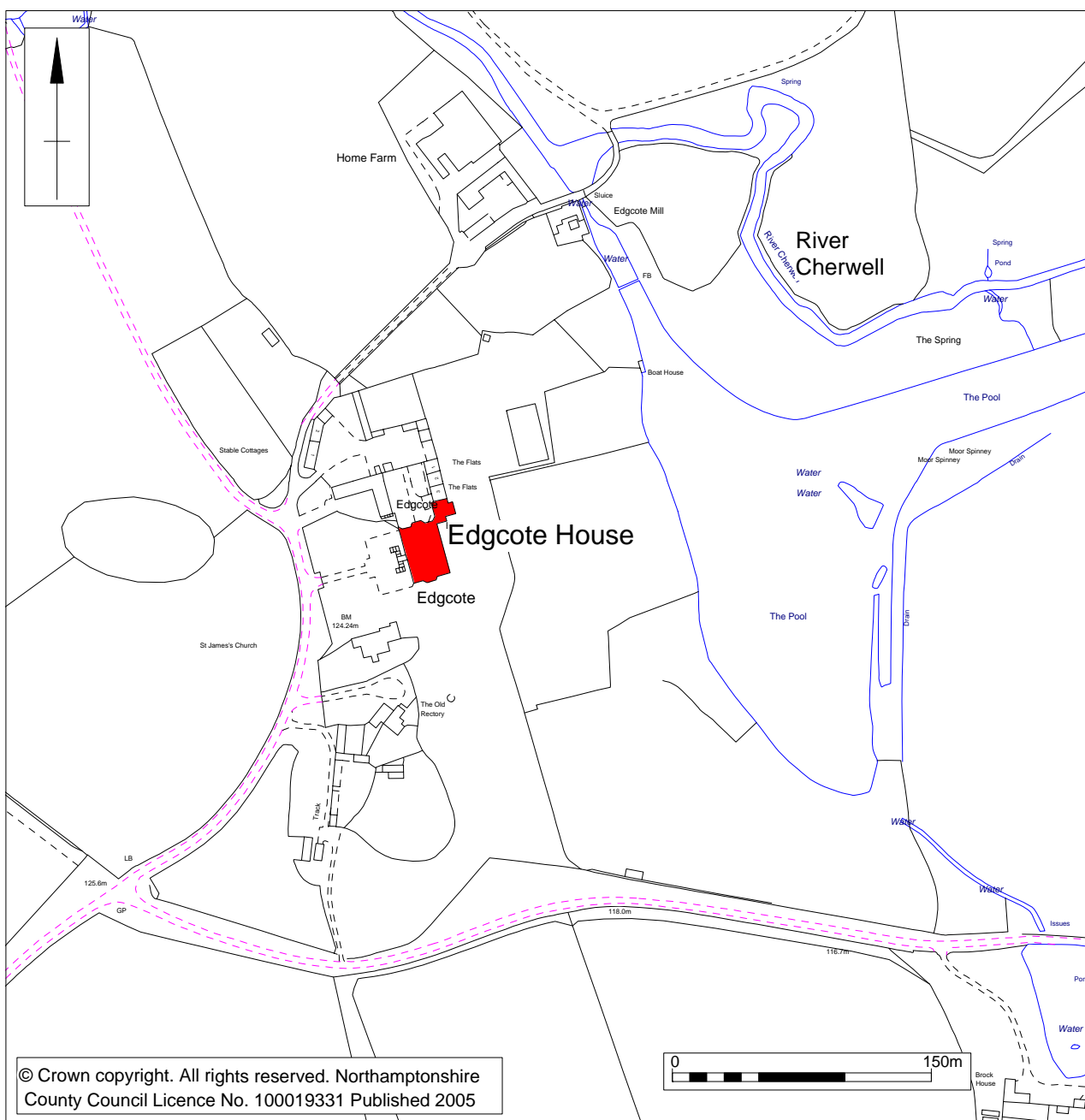
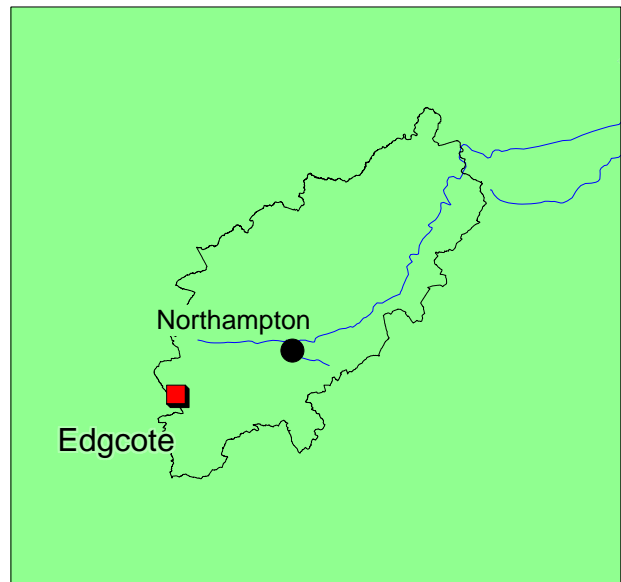
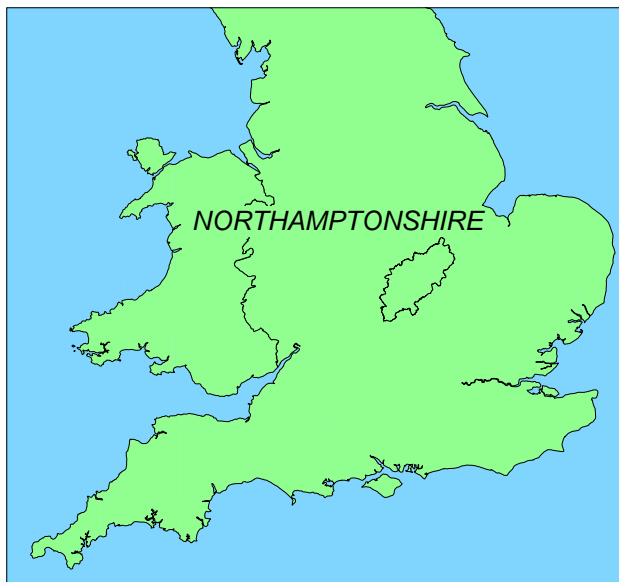


Fig 1

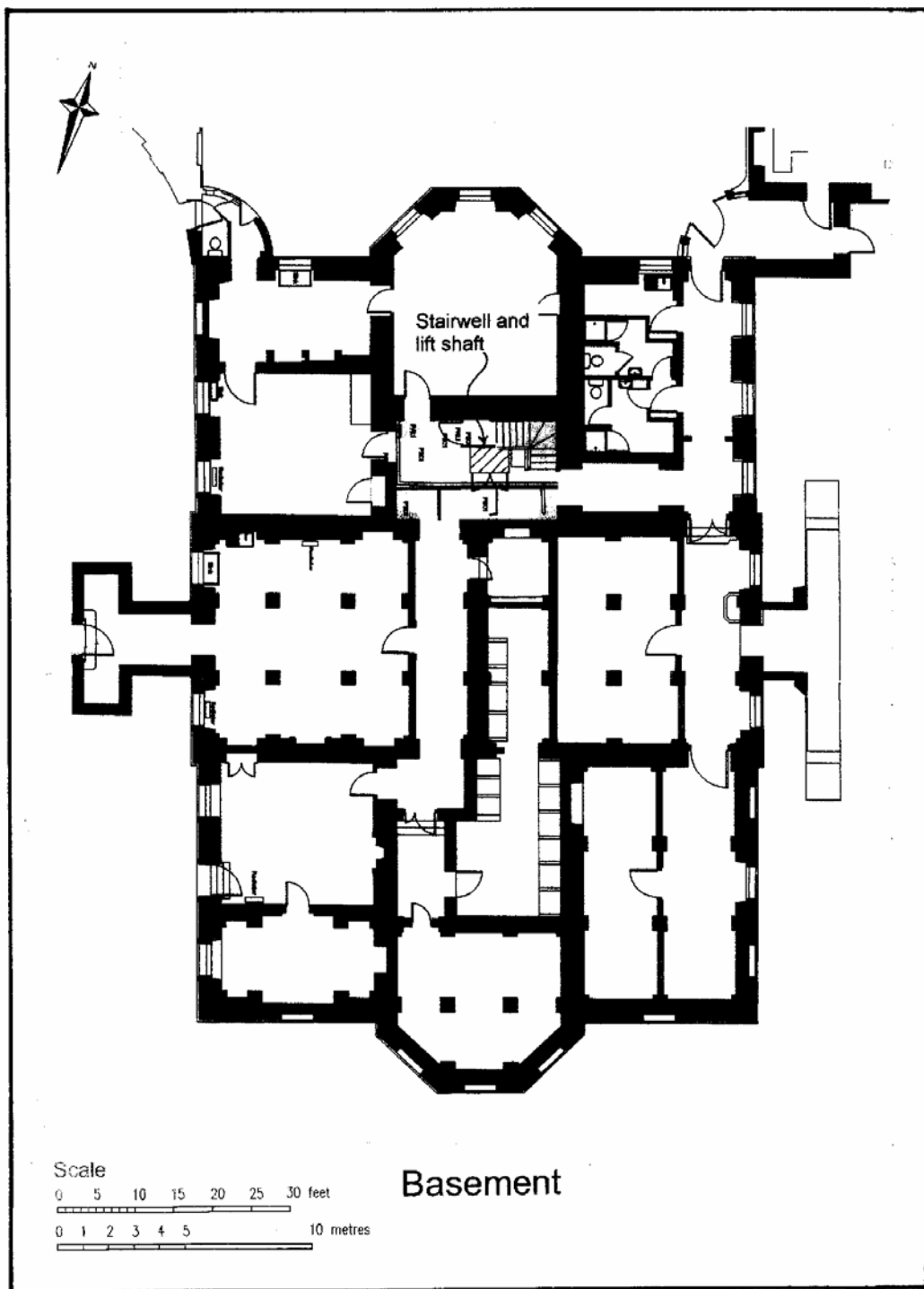


Fig 2

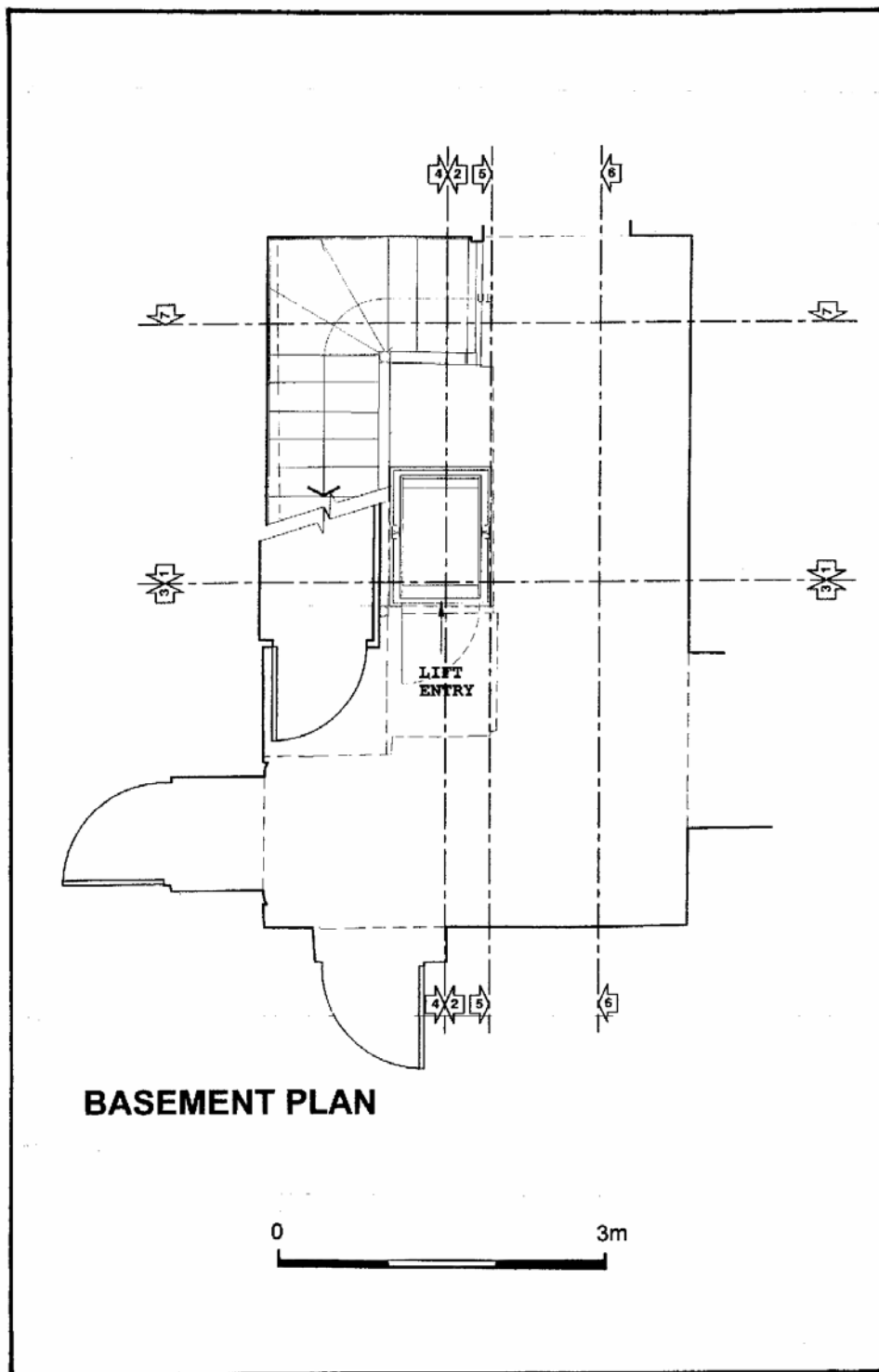


Fig 3



Plate 1 Lift installation pit showing concrete raft and rubble

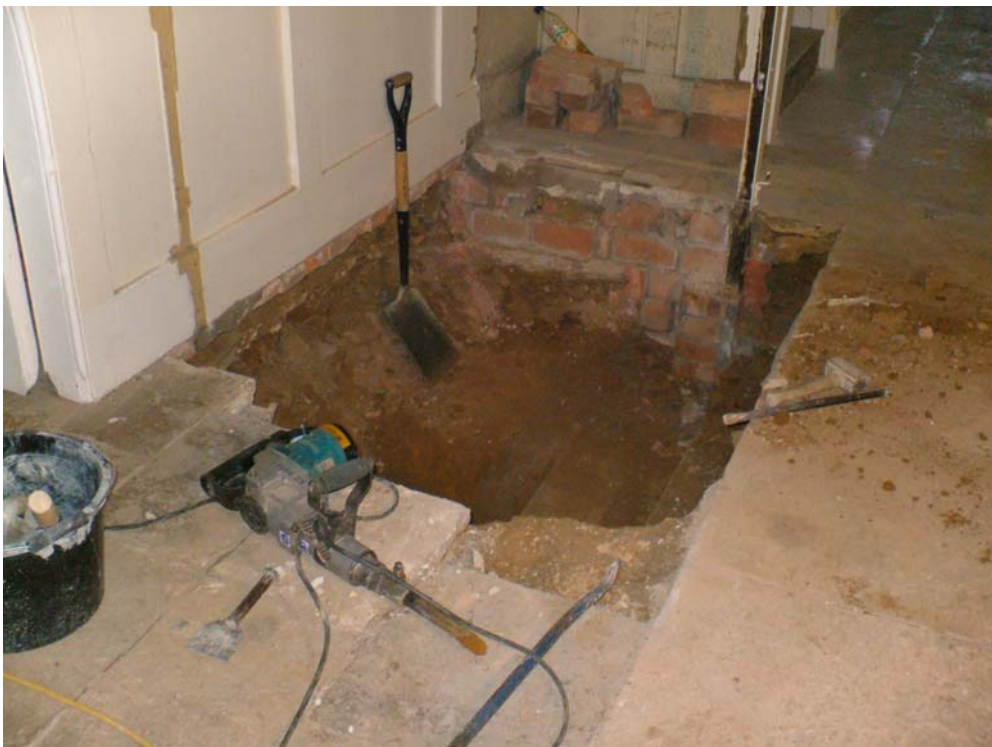


Plate 2 Lift installation pit showing subsoil/natural below raft