



North Pennines Archaeology Ltd
2006
Metric Building Survey
of Blencow Hall,
Penrith, Cumbria

REPORT No:
CP 307/06

Scale 1:200 for A3 plot

DRAWN BY: MDR
DATE: 15/08/06



KEY:
 section location
 blocked opening

TITLE:
Ground floor plan

COMMISSIONED BY:
Graham K Norman (Architect) Ltd

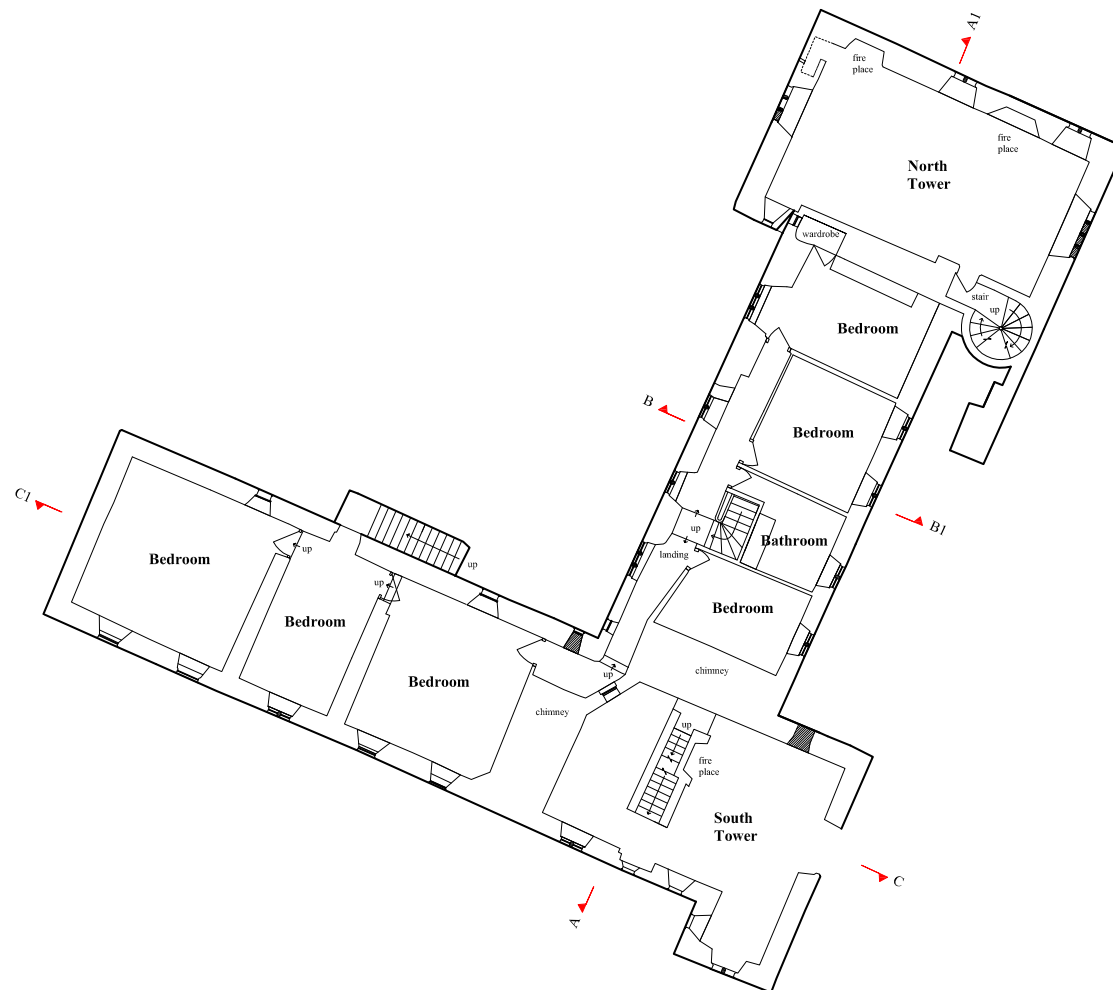


Figure 4: First floor plan