

North Pennines Archaeology Ltd  
2006  
Metric Building Survey  
of Blencow Hall,  
Penrith, Cumbria


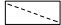
REPORT No:  
CP 307/06

Scale 1:200 for A3 plot

DRAWN BY: MDR  
DATE: 15/08/06

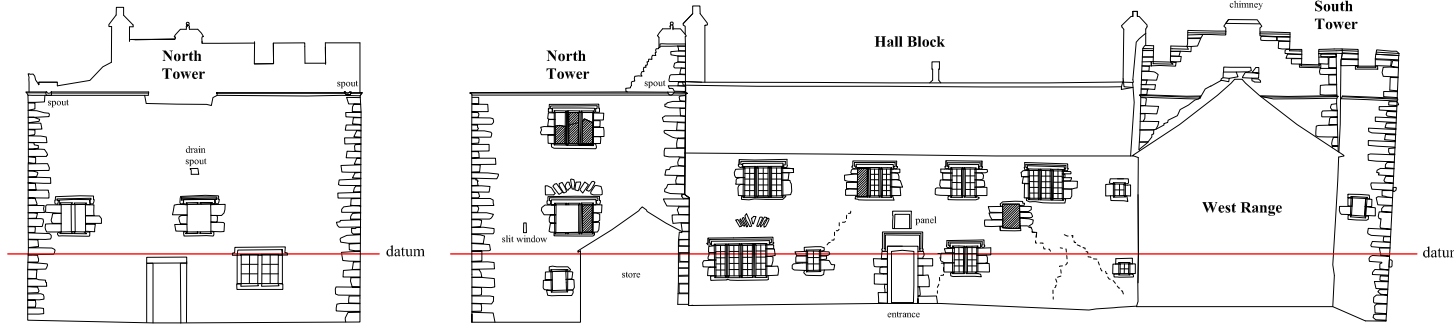
— datum 195m OD

KEY:

-  floor level
-  blocked opening
-  break in masonry

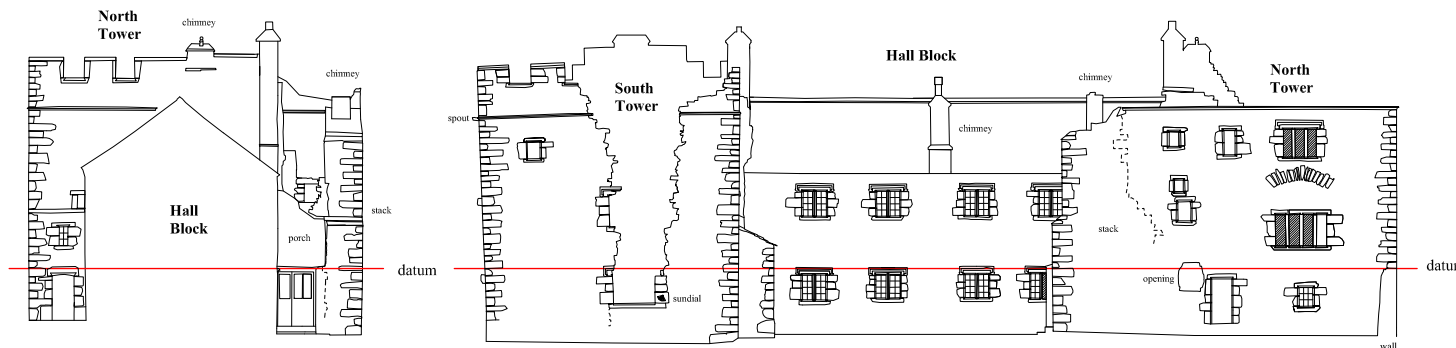
TITLE:  
Elevations of the Hall Block,  
North Tower and South Tower

COMMISSIONED BY:  
Graham K Norman (Architect) Ltd



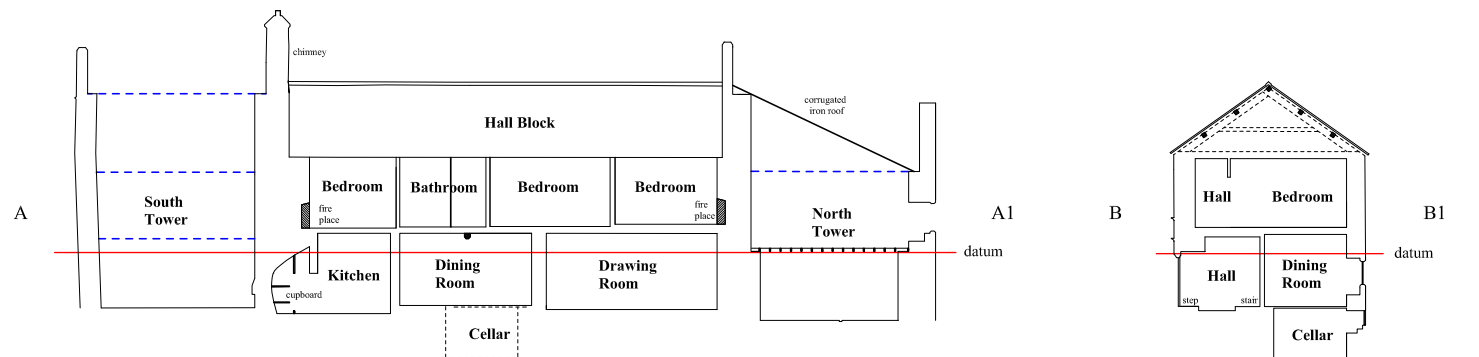
North Tower, northeast-facing elevation

Blencow Hall, northwest-facing elevation



North Tower, southwest-facing elevation

Blencow Hall, southeast-facing elevation



Blencow Hall, southeast-facing section (A-A1)

Blencow Hall, southwest-facing section (B-B1)

Figure 5: Elevations of the Hall Block, North Tower and South Tower