
APPENDIX 3: PLATES

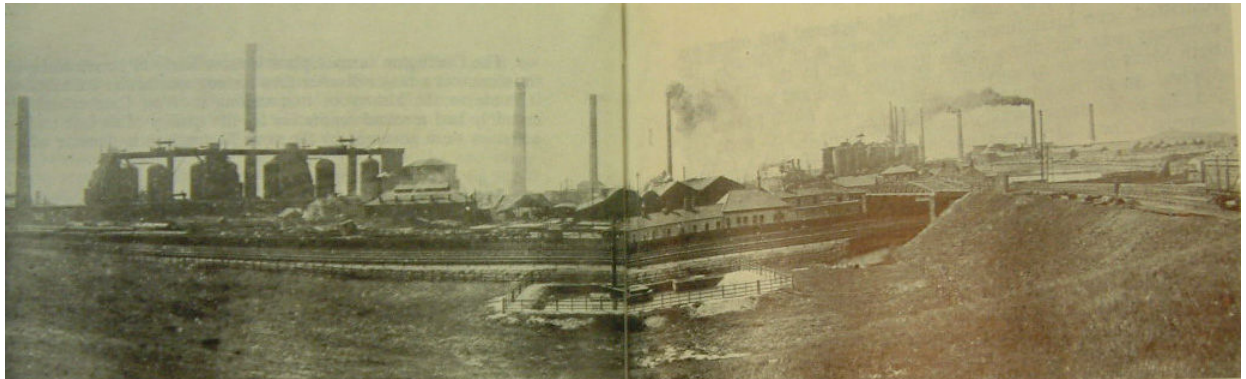


Plate 1: Panoramic View of Moss Bay Ironworks (left) and Derwent Blast Furnaces (right) facing west, 1909 (after Lancaster and Whittleworth 1977, 66-67). The Development Site can be seen to the left of the photograph in the foreground to the left of the reservoir.

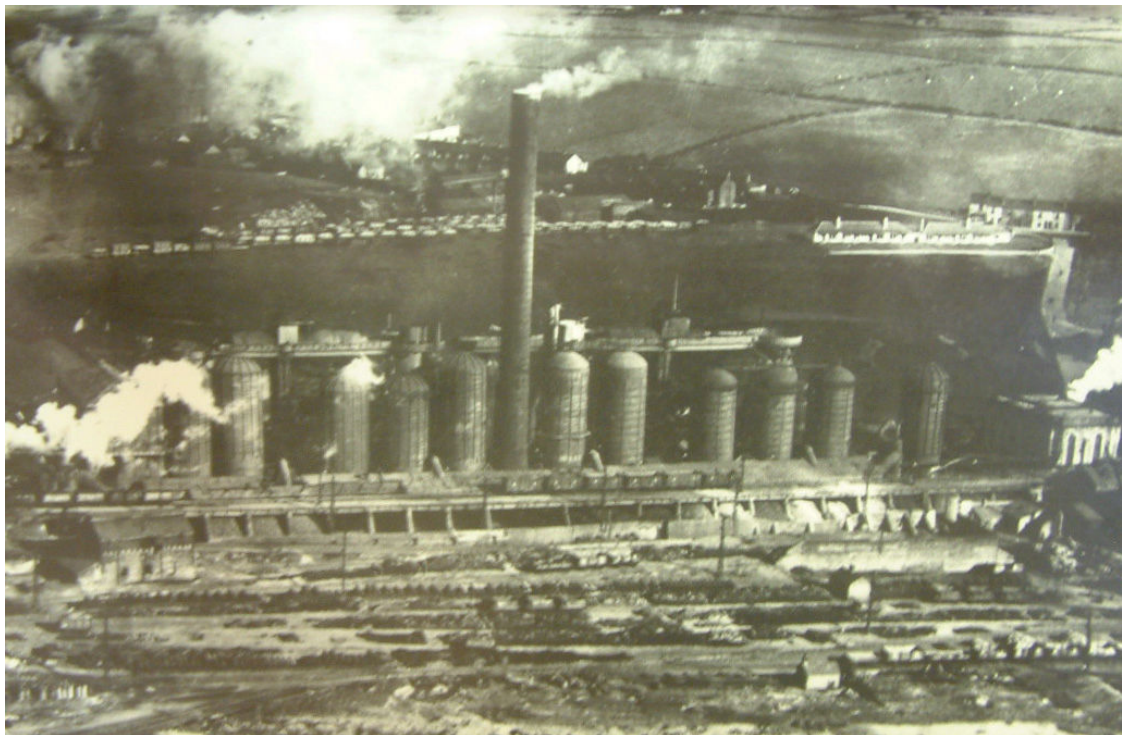


Plate 2: Aerial View of Moss Bay Ironworks from the west in 1936 (after Byers 1999, 30). The Development Site can be seen to the right of the photograph in front of the cottages , with the track leading through it on the far right.

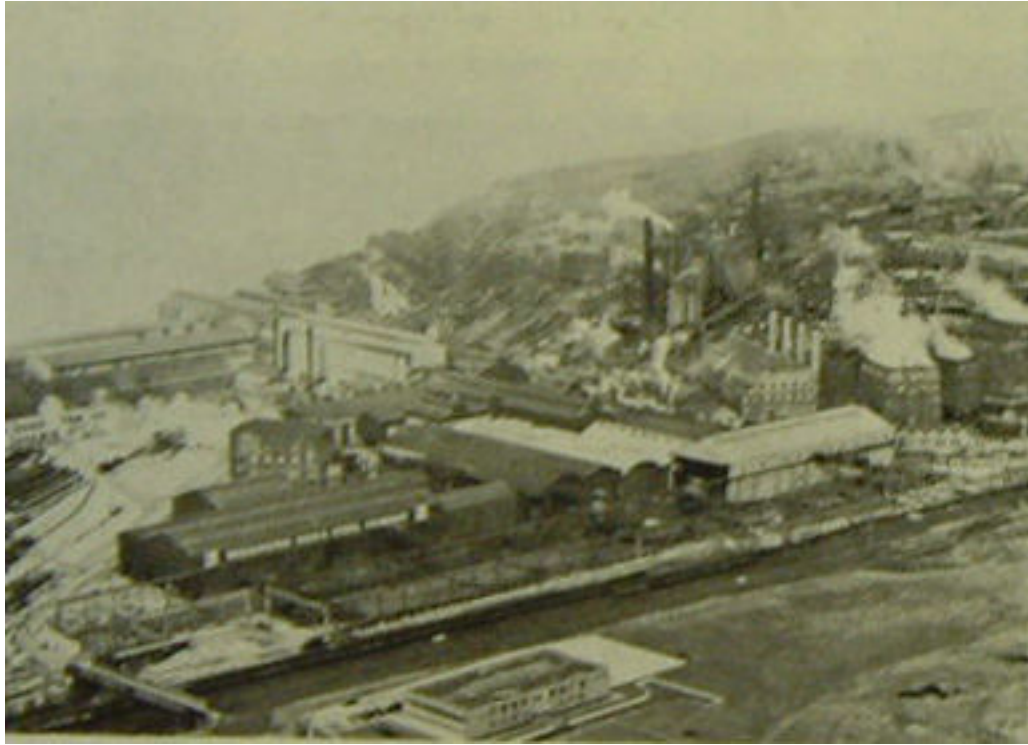


Plate 3: Aerial View of Moss Bay Ironworks from the south-east, 1958 (after Lancaster and Whittleworth 1977, 70). The Development Site can be seen in the foreground, with the rectangular building occupying what is now a car parking area.



Plate 4: Aerial View of Moss Bay Ironworks from the south-east, 1999 (after Byers 1999, 29). The Development Site can be seen in the bottom right corner, with the two car parking areas either side of the track and the office buildings to the left.



Plate 5: Entrance to Development Site



Plate 6: View of track way leading to bridge over the railway lines



Plate 7: View of extant office buildings



Plate 8: View of the evaluation area from north-eastern corner, facing south



Plate 9: View of site of the former building, from track way facing north



Plate 10: View of 'Jubilee Cottages' and embankment from extant buildings



Plate 11: General view of Trench 1



Plate 12: section in Trench 1



Plate 13: General View of Trench 2



Plate 14: Section in Trench 2



Plate 15: General view of Trench 3

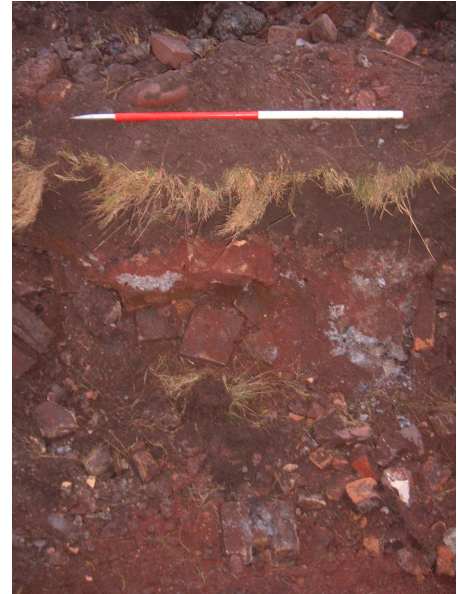


Plate 16: Section in Trench 3



Plate 17: General view of Trench 4



Plate 18: Section in Trench 4



Plate 19: General view of Trench 5



Plate 20: Section in Trench 5



Plate 21: General view of Trench 6



Plate 22: Section in Trench 6



Plate 23: General view of Trench 7



Plate 24: Section in Trench 7



Plate 25: General view of Trench 8



Plate 26: Section in Trench 8



Plate 27: General view of Trench 9



Plate 28: Section in Trench 9



Plate 29: General view of Trench 10



Plate 30: Section in Trench 10



Plate 31: General view of Trench 11



Plate 32: Section in Trench 11



Plate 33: General view of Trench 12



Plate 34: Section in Trench 12



Plate 35: General view of Trench 13



Plate 36: Section in Trench 13