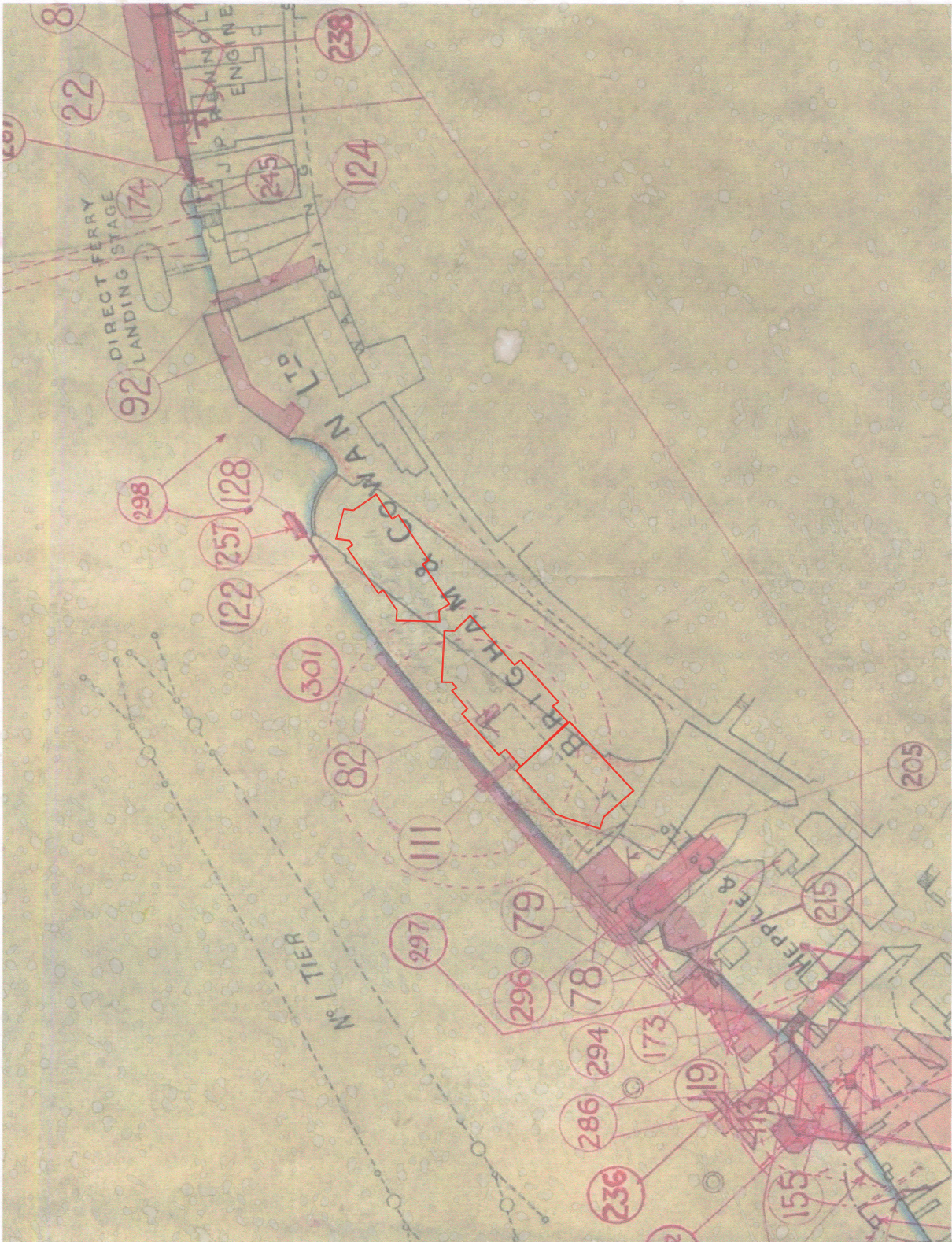


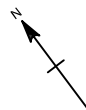
2 chains to 1 inch  
 1584



North Pennines Archaeology Ltd  
 2007

PROJECT: Market Dock North Watching Brief  
 SCALE: 1:1800  
 REPORT No: CP 548/07  
 CLIENT: Mandale Commercial Limited  
 DRAWN BY: CP  
 DATE: September 2007

LOCATION:



KEY:



Excavated Area

Figure 8a: Undated Illustration of Brigham and Cowan's Dockyard (from Tyne Dock Archive)