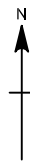




North Pennines Archaeology Ltd
2007

PROJECT: Maudslack to Dale Head, Martindale
 SCALE: 1:100,000
 REPORT No: CP 541/07
 CLIENT: United Utilities PLC
 DRAWN BY: CP
 DATE: October 2007

LOCATION:



KEY:



Study Area
Location

Reproduced by permission of Ordnance Survey on behalf of The Controller of Her Majesty's Stationery Office. © Crown copyright. All rights reserved. Licence number 100014732

Figure 1 : Location of Study Area