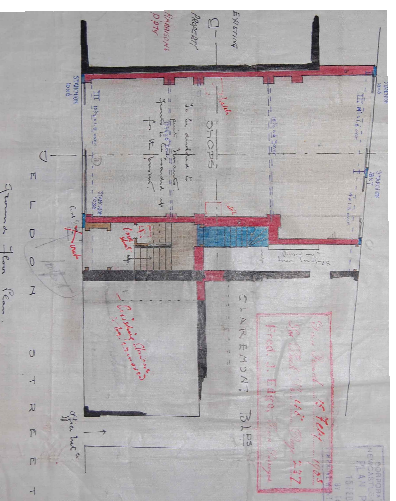
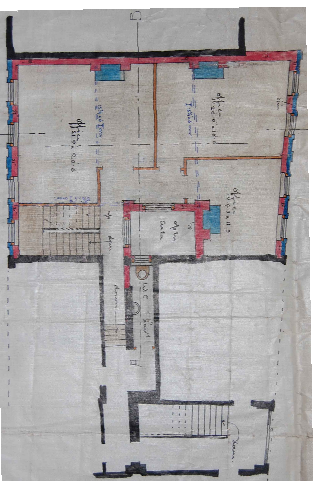


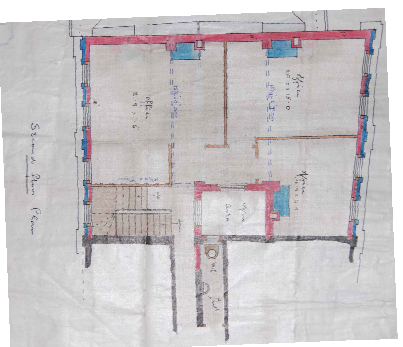
Basement Plan



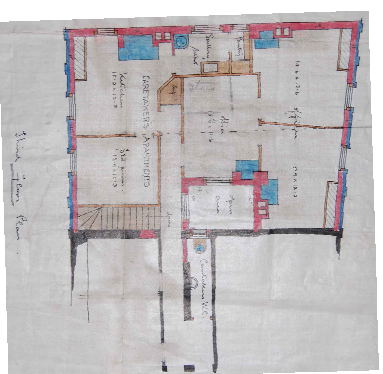
Ground Floor Plan



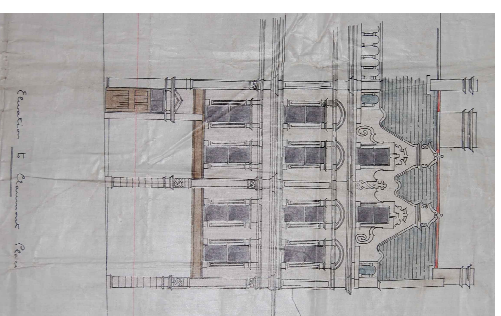
First Floor Plan



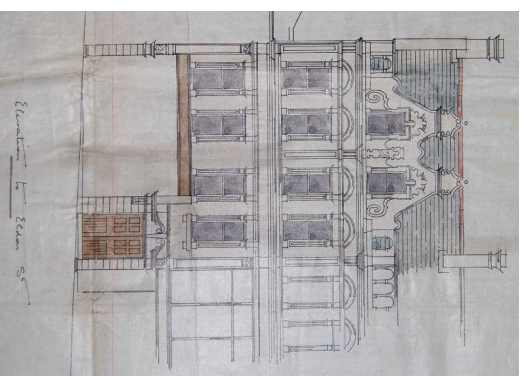
Second Floor Plan



Third Floor Plan



Elevation to Clarendon Road



Elevation to Eldon Place



North Pennines Archaeology Ltd
2006
Clarendon Buildings and
Barras Building,
Newcastle upon Tyne

SCALE: 1:400

DRAWN BY: CP

DATE: November 2007

LOCATION:



KEY:

REPORT NO:
CP 588/07

COMMISSIONED BY:
Newcastle University

Figure 14: Building Control Plan, 1905 (TWAS T186/16340)