

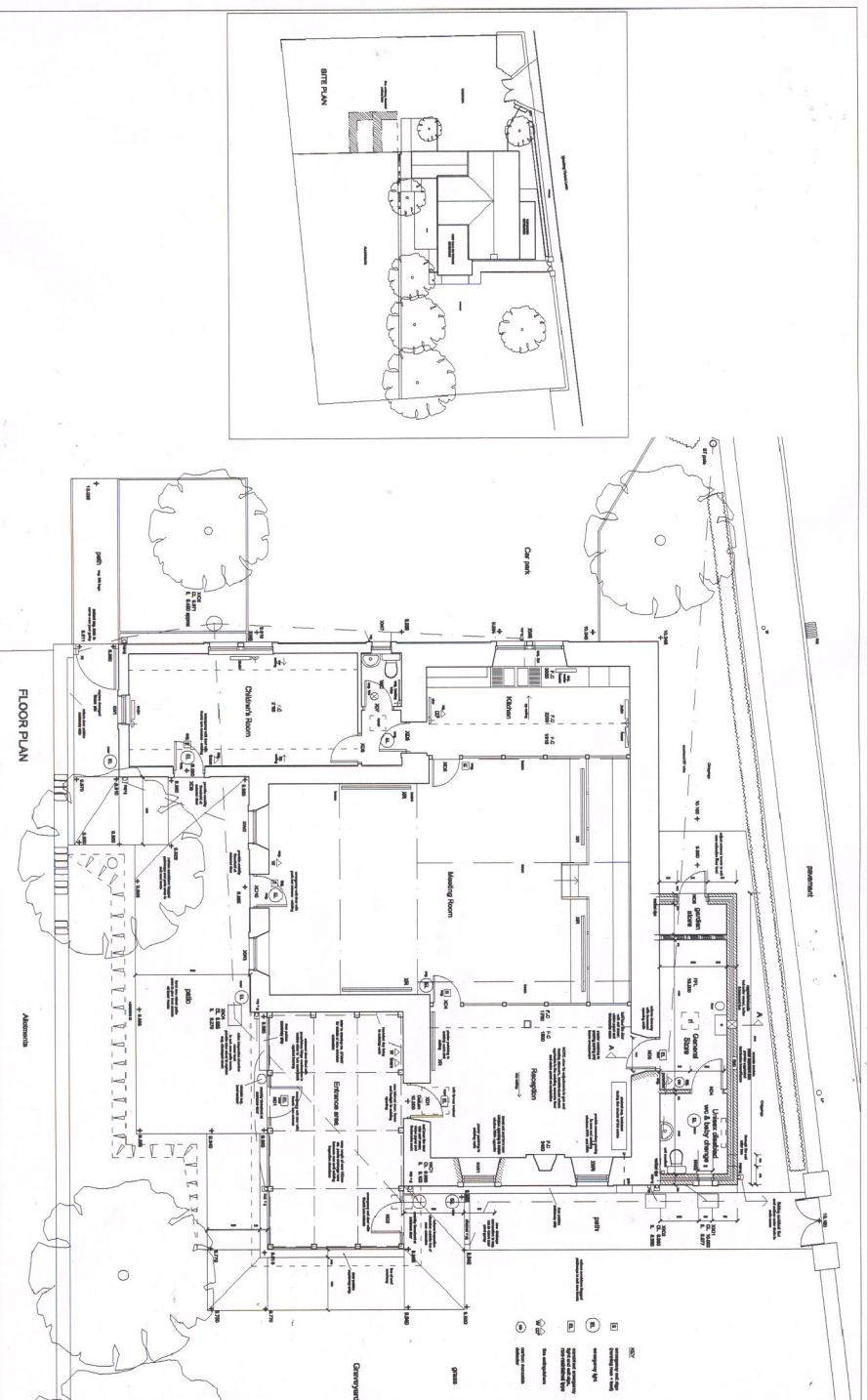


North Pennines Archaeology Ltd
 2008
 Friends' Meeting House
 Meeting House Lane
 Penrith

Scale Not to scale

DRAWN BY: JS
 DATE: October 2008
 REPORT No: CP 735/08

COMMISSIONED BY:
 John Bodger
 Chartered Architects Ltd



PROJECT: The Meeting House, Penrith, Cumbria.

CLIENT: THE FRIENDS



NOTES: 1. All dimensions are in millimetres unless otherwise stated. 2. All dimensions are to the centre of the wall unless otherwise stated. 3. All dimensions are to the finished surface unless otherwise stated. 4. All dimensions are to the finished surface unless otherwise stated.

DRAWN BY:	JS
DATE:	October 2008
REPORT No:	CP 735/08
COMMISSIONED BY:	John Bodger Chartered Architects Ltd

Plate 8: Proposed Floor and Site Plan for Friends' Meeting House. Provided by John Bodger Chartered Architects Ltd.