



North Pennines Archaeology Ltd
 2008
 Friends' Meeting House
 Meeting House Lane
 Penrith

Scale Not to scale

DRAWN BY: JS

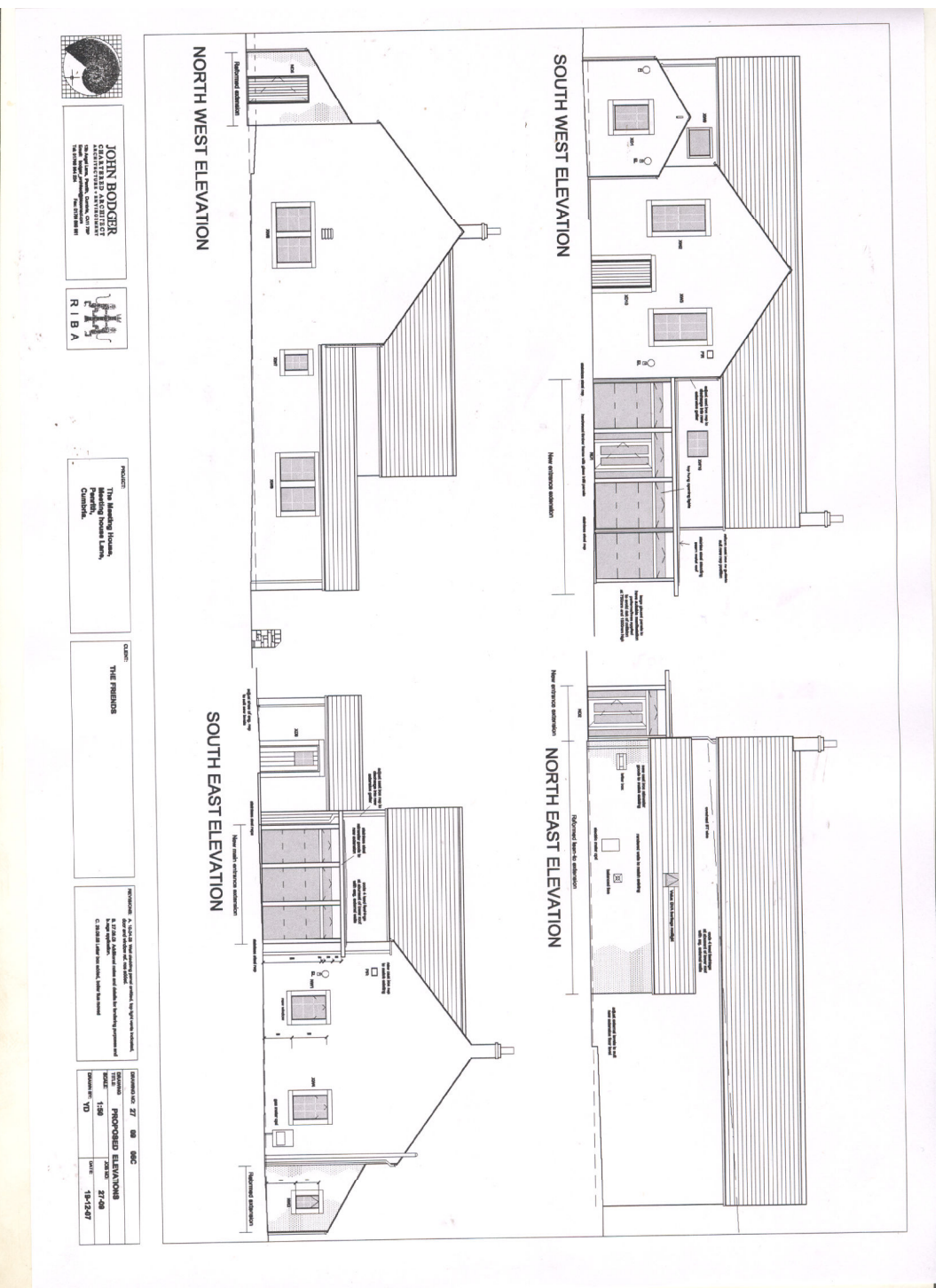
DATE: October 2008

REPORT NO:

CP 735/08

COMMISSIONED BY:

John Bodger
 Chartered Architects Ltd



JOHN BODGER
 CHARTERED ARCHITECTS LTD
 100-102, Market Street, Carlisle, Cumbria, CA1 1JH
 Tel: 01273 521122 Fax: 01273 521188



PROJECT: The Meeting House, Meeting House Lane, Carlisle.

CLIENT: THE FRIENDS

NOTES: As shown on the drawings, the drawings are for the proposed new building and should be checked against the original drawings and specifications before construction.

DATE OF ISSUE	27 08 08
DATE OF REVISION	27-08
REVISION NO.	158
REVISION DESCRIPTION	15-12-07

Plate 9: Proposed Elevations for Friends' Meeting House. Provided by John Bodger Chartered Architects Ltd.