

# Hatton Farm, Marykirk, Angus: Archaeological Mitigation

Data Structure Report



by Peter Klemen  
issued 02<sup>nd</sup> December 2013  
on behalf of Mr Kevin Mclean

**RATHMELL**   
ARCHAEOLOGY LTD

## Contents

<b>Introduction and Planning Context.....</b>	<b>3</b>
<b>Historical Background .....</b>	<b>3</b>
<b>Project Works.....</b>	<b>6</b>
<b>Findings: Building Recording .....</b>	<b>6</b>
Landscape Setting .....	6
The Steading (001).....	7
Room A.....	13
Room B .....	13
Room C.....	13
Room D .....	13
Room E.....	21
Room F.....	21
Room G .....	21
Room H .....	21
<b>Discussion .....</b>	<b>21</b>
<b>Conclusion .....</b>	<b>25</b>
<b>References .....</b>	<b>26</b>
Documentary .....	26
Cartographic.....	26
<b>Appendix 1: Discovery &amp; Excavation in Scotland .....</b>	<b>27</b>
<b>Appendix 2: Photo Register .....</b>	<b>28</b>
Photographic Register .....	28
<b>Contact Details .....</b>	<b>0</b>

## Introduction and Planning Context

1. This Data Structure Report represents the findings of Historic Building Recording works required by Mr Kevin McClean in respect of the conversion of a redundant steading and associated structures to a dwellinghouse (planning application AB 2013/2135 and AB 2013/2151) at Hatton Farm, Marykirk, Aberdeenshire (NGR: NO 67537 67506). The works are designed to create a competent record of the B-listed eighteenth and nineteenth century steading before the commencement of the proposed conversion.
2. Aberdeenshire Council Archaeology Service, who advise Aberdeenshire Council on archaeological matters, provided guidance on the structure of Historic Building Recording works required on this site to inform the planning process. In particular, they specified a Level 1 survey in accordance with *Recording Historic Buildings, A Descriptive Specification* (RCHME Third Edition, 1996).
3. The archaeological works are intended to record the existing standing structures prior to proposed development. Rathmell Archaeology Ltd has been appointed to act with regard to the archaeological issue by Mr Kevin McClean. The project works described below were designed to comply with the identified requirements of Aberdeenshire Council Archaeology Service.

## Historical Background

4. The parish of Marykirk, now located in the county of Aberdeenshire, was previously part of the county of Kincardineshire and is located at the southern extremity of the extensive plain known as the 'How of the Mearns'. Previous and older parish names refer to Marykirk as Aberluthnott or often written as Aberluthnet (Low 1834-45:298). Minister Low in the New Statistical Accounts (1834-45) references this parish name as being recorded on a pair of silver communion cups which had the inscription "*This cup was given to the kirk of Aberluthnott by David and Jean Rait of Pitgarvie, 1715*".
5. With specific reference to 'The House of Hatton', Low (1834-45:302) refers to it "as neither large nor commodious. It is however, in tolerable repair and occupied by the tenant farmer". In both statistical accounts compiled by Rev John Brymer (1791-99) and Minister A. C. Low (1834-45) refer to the land and property being owned by the Honourable General Hugh Arbuthnott.
6. Both the house (Canmore ID: 35885) and associated ancillary farm buildings (Canmore ID: 35887) are still in use and B-listed. The eighteenth century house forms a 2-storey U-plan building and is possibly built on the site of an earlier manor. On the ground floor, a single panelled room survives in the west wing, with graffiti dated 1742 and the initials 'RM' and 'PM' which are suggested to be of the Montgomery family who owned Hatton Mains until c.1920. To the rear of the house there is a mid eighteenth century walled garden (Canmore ID: 35886), also B-listed, and complete with a pyramid-roofed garden building. The farm buildings/steading are located to the west of the house with the southern wing of the steading dating to the 18th Century and was formerly the stables and coachhouse for the house.
7. The earliest depiction of Hatton House and Farm is from Roy's *Military Survey of Scotland Highlands* (1747-52) (Figure 1a). Roy depicts the area of Hatton as having four possible structures. Two structures are clearly depicted; one rectangular and forming the coachhouse and stables (Canmore ID: 35887), the other a U-shaped building most likely to be Hatton House (Canmore ID: 35885). The other two possible structures are difficult to make out. The surrounding areas to the north and south are depicted as cultivated.
8. William Gardner's *A Map of Kincardineshire* (1797) (Figure 2a) depicts Hatton House within a defined and designed landscape with a square structure to the north of the house, possibly representing either the walled garden or the pyramid-roofed structure (Canmore ID: 35886). John Thomson's *Kincardine Shire* (1832) (not shown) similarly depicts Hatton House but here it is only surrounded by woodland with no designed landscape or other structures associated.

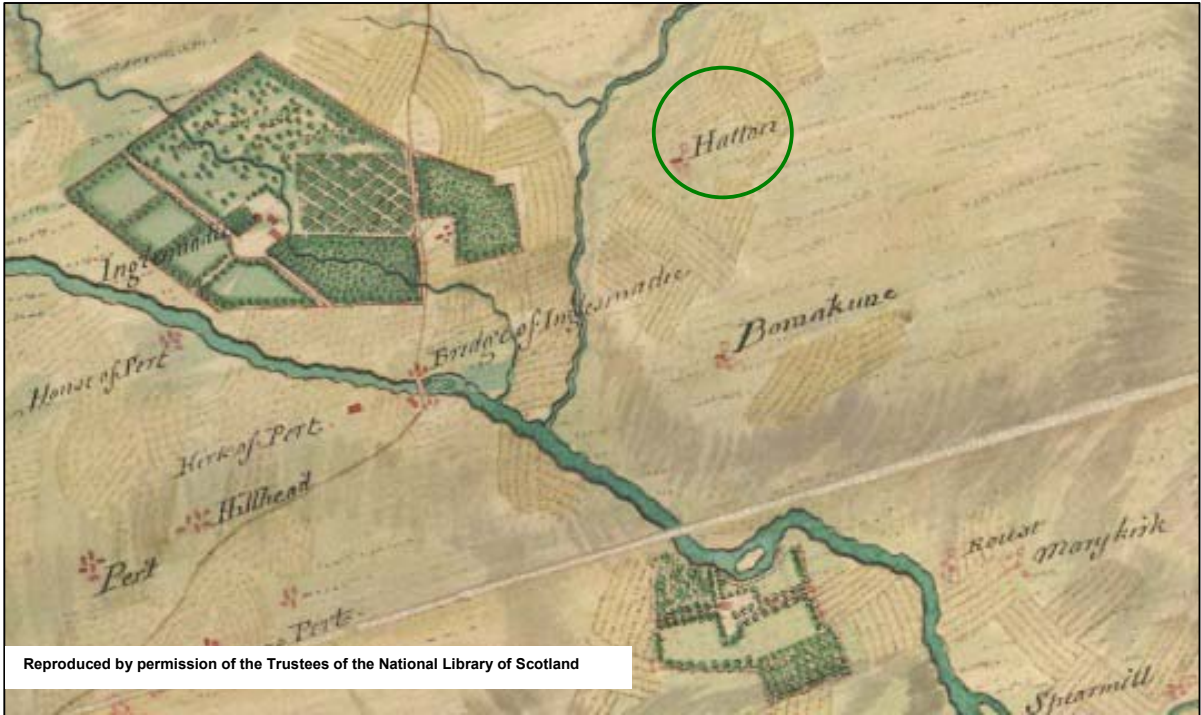


Figure 1a: Roy's Military Survey of Scotland Highlands (1747-52)



Figure 1b: William Gardner's A Map of Kincardineshire (1797)

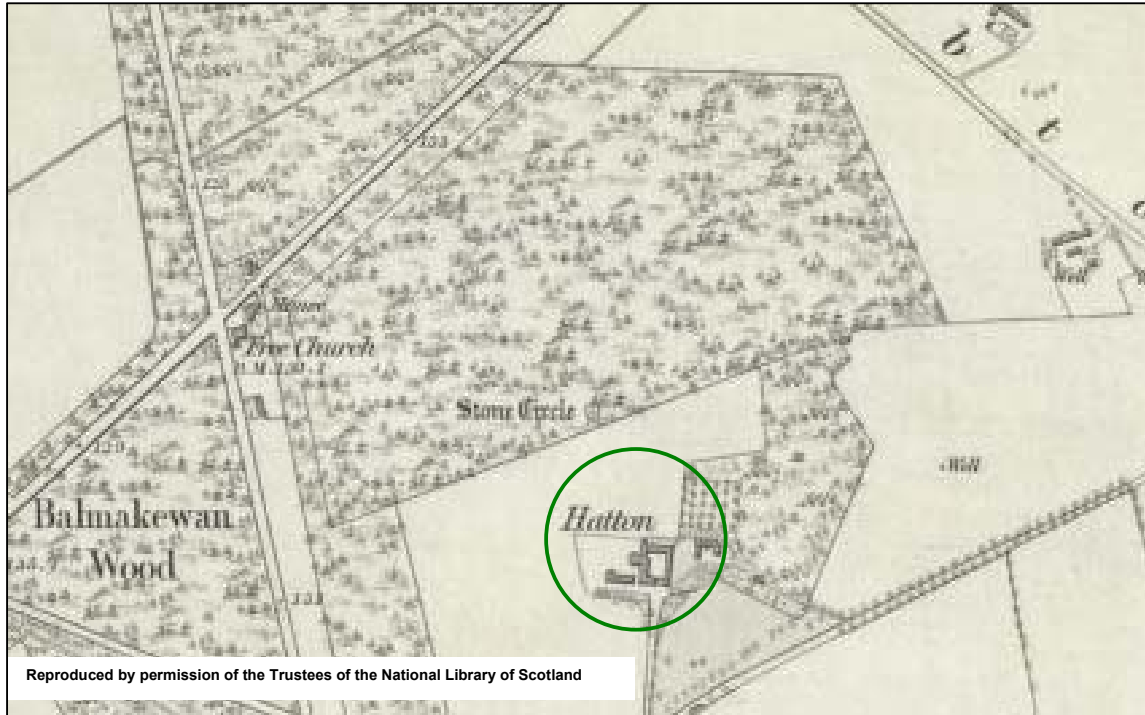


Figure 2a: Ordnance Survey 6 inch 1<sup>st</sup> edition (1868)

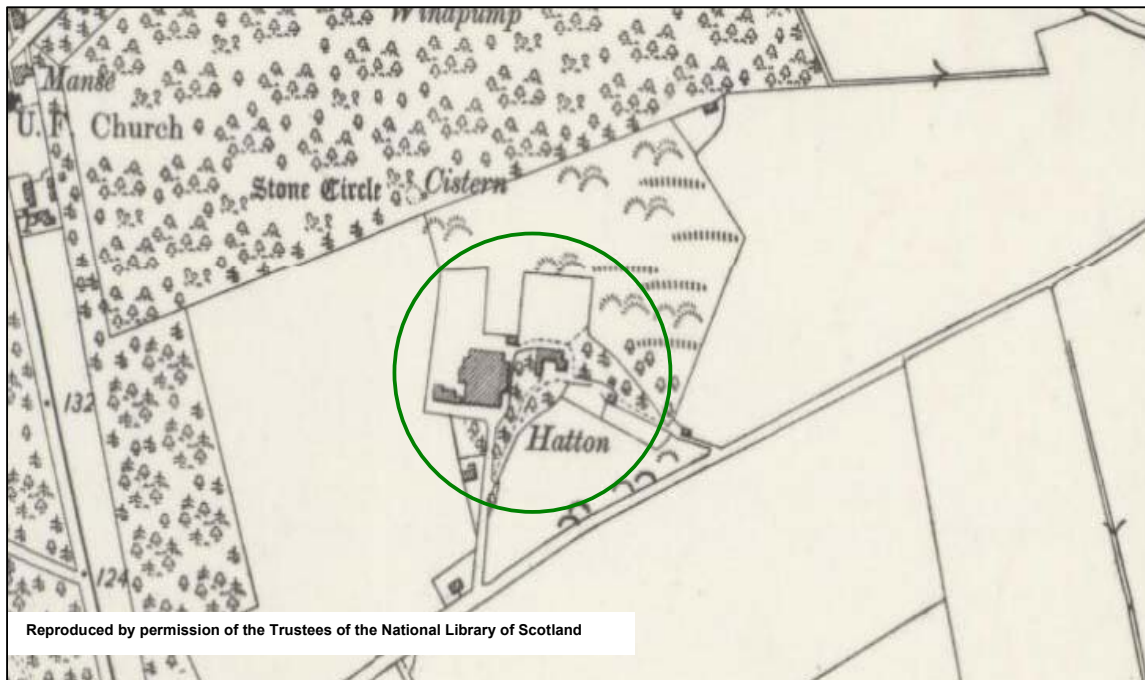


Figure 2b: Ordnance Survey 6 inch 3<sup>rd</sup> edition (1928)

9. On the *6 inch 1st Edition Ordnance Survey* (1868) (Figure 2a) Hatton Estate is depicted as three distinct buildings with the U-shaped plan of Hatton House clearly visible (Canmore ID:35885) and to the north the outline of the walled garden (Canmore ID: 35886). The steading (Canmore ID: 35887) is depicted as square in plan with a central open courtyard, and a circular extension attached to the outer elevation of the west wing which forms a horse mill. The third structure is a rectangular steading aligned east-west and located to the west of the larger square steading.
10. By the *6 inch 2nd Edition Ordnance Survey* (1904) (not shown), the open courtyard in the square steading is shown as roofed, presumably forming a covered cattle court, and a further rectangular steading has been added to the north. With the *6 inch 3<sup>rd</sup> Edition Ordnance Survey* (1928) the horse mill has been removed and the rectangular steading to the north has been reduced to a square plan structure. The main square steading and rectangular steading to the west both survive today, with later alterations and enlargements, while the steading to the north has been removed.

## Project Works

11. The programme of works was undertaken on the 18th of October 2013 and included a Level 1 building recording of the surviving elements of structures associated with the redundant eighteenth and nineteenth century steading.
12. The programme of mitigation works was agreed to comprise the following key components:
  - a. the recording of the individual elements which make up the nineteenth century steading to Level 1 of the RCHME standards; and
  - b. the production of an illustrated report which integrates the findings of the works through a Data Structure Report characterising the structures.
13. All works were conducted in accordance with Aberdeenshire Council Archaeology Service Standard Conditions, the Institute for Archaeologist's Standards and Policy Statements and Code of Conduct and Historic Scotland Policy Statements.

## Findings: Building Recording

14. The purpose of the building recording was to investigate and record the surviving elements of the eighteenth and nineteenth century steading associated with Hatton House and Farm. The aims of the exercise were to provide a baseline record of the extant structures prior to their conversion into a dwellinghouse. A site visit was conducted on the 18<sup>th</sup> October 2013 to assess the structures that were to be recorded and the landscape context in which they were located.
15. The focus for the Historic Building Survey and indeed the only structure included was the eighteenth century steading that has had both nineteenth and twentieth century alterations (001). Within (001) there were eight separate rooms that are labelled A-H in the following text (Figure 3). The following outlines the component rooms and significant features which make up (001) and provides also an evaluation of the condition of each individual representative of the rooms.

### *Landscape Setting*

16. Hatton House and Farm are located to the east of the A90 and is accessed along a small track heading in a north-east direction from the B974. The area is at a height between 40-45m OD and, apart from a small area of woodland located to the south-east, the landscape surrounding the house and farm is formed of open fields.

*The Steading (001)*

17. Structure (001) is square on plan and is subdivided internally into eight separate rooms (A-H) (Figure 3). Although there have been a number of alterations, these have not affected the overall fabric of the building. The long period over which (001) has been used to house animals has also meant that there has been little change to the overall character of the building.
18. Room A forms the southern wing of (001) and is the elevation that forms the front of the building as it is accessed by the farm track (Figure 4 & 5a). The use of well formed worked ashlar blocks throughout would suggest that this was always intended as the front elevation. On the eastern end of the southern wing an extension has been added and the use of coursed rubble with ashlar quoins demonstrates a contrast in the construction of the extension representing nineteenth century activity. Spanning the junction between the two parts of the southern wing is a concrete trough (1) 880mm by 5.65m. Standing at two storeys and a total height of 7.54m, the lower main storey is at a height of 4.47m and there are number of contemporary features still visible.
19. There are two segmental arched windows (2i & 2ii) both measuring 1.97m by 1.17m (Figure 6a), two segmental arched doorways (3i & 3ii) with a central doorway measuring 1.60m in width by 2.28m in height and the western doorway measuring 2.50m in width by 2.60m in height. Located on the second storey are three square windows/air vents (4 i-ii) (Figure 7a) that each have wooden slats as protection from the weather. There is also a central hatch (5) (Figure 7b) which would have allowed access for storage in the upper level; for example a hay loft. The second storey features could not be measured as access was not possible. The ashlar blocks used in the construction of windows 2(i & ii), windows 4(i-iii) and doorways 3(i & ii) have a linear carved design used on the stonework and the sandstone used in the construction of these features including doorway 5 are red in colour and in contrast to the rest of the grey coloured sandstone ashlar blocks used in the construction.
20. The roof is slated across both the two storey and the adjoining extension of the southern wing with four small skylights (6 i-iv) located in the roof and facing south. The guttering and drain pipes are all original features, and are manufactured from cast iron (Figure 7a).
21. The external west elevation (Figure 8) is partially obscured by a welfare unit (Figure 9a). However, the west end of the southern wing is visible (9bi) and access behind the welfare unit is possible. Across the western elevation there are three windows (2i-iii). Window 2(i) measures 700mm by 1.10m and both windows 2(i-ii) measure 1.10 by 1.40m. There are two doorways 1(i-ii) with doorway 1(i) measuring 1.50m by 2.30m and 1(ii) measuring 1.20m by 2.10m. There are a set of stairs (3) located on the west end of the southern wing measuring 2.17m by 5.80m and each step measuring 1.35m wide and 180mm high (9bi). They are constructed in sandstone and capped with concrete (Figure 8bii). There is also access to the second storey through a square entrance with a wooden door (4) similar to that of (5) in the southern elevation.
22. The east elevation is largely obscured by scaffolding and Heras fencing (Figure 10a) although two doorways are visible. One forms the access into the interior of the southern wing and Room A and measures 3m by 2.70m, with a second doorway entering Room C which has the same measurements. Constructed along the eastern wing and totally obscuring the east elevation is a modern corrugated iron extension. The north elevation (Figure 11b) has five skylights set into the roof and two metal air vents located on the ridge of the roof.
23. The height of the north, east and west elevations is 6.80m to the wallhead, and the roofs are slated. Only the southern wing is constructed from ashlar with the north, east and west wings all constructed from coursed rubble (Figures 9bi & 10b). The total ground floor dimensions are 41.25m by 27.51m giving an area of 1 134.78m<sup>2</sup>.

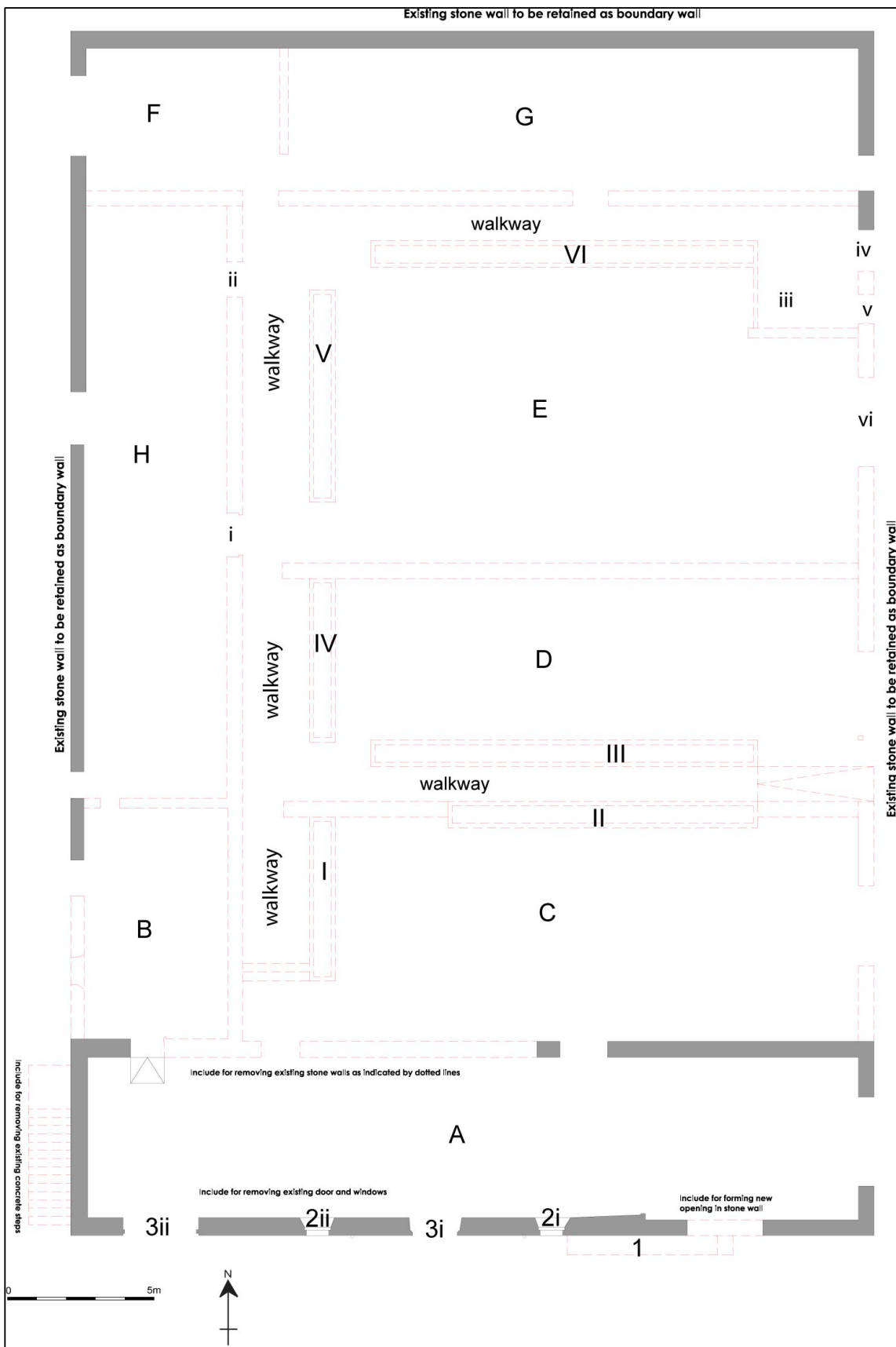


Figure 3: Plan of (001) and internal divisions (A-H)



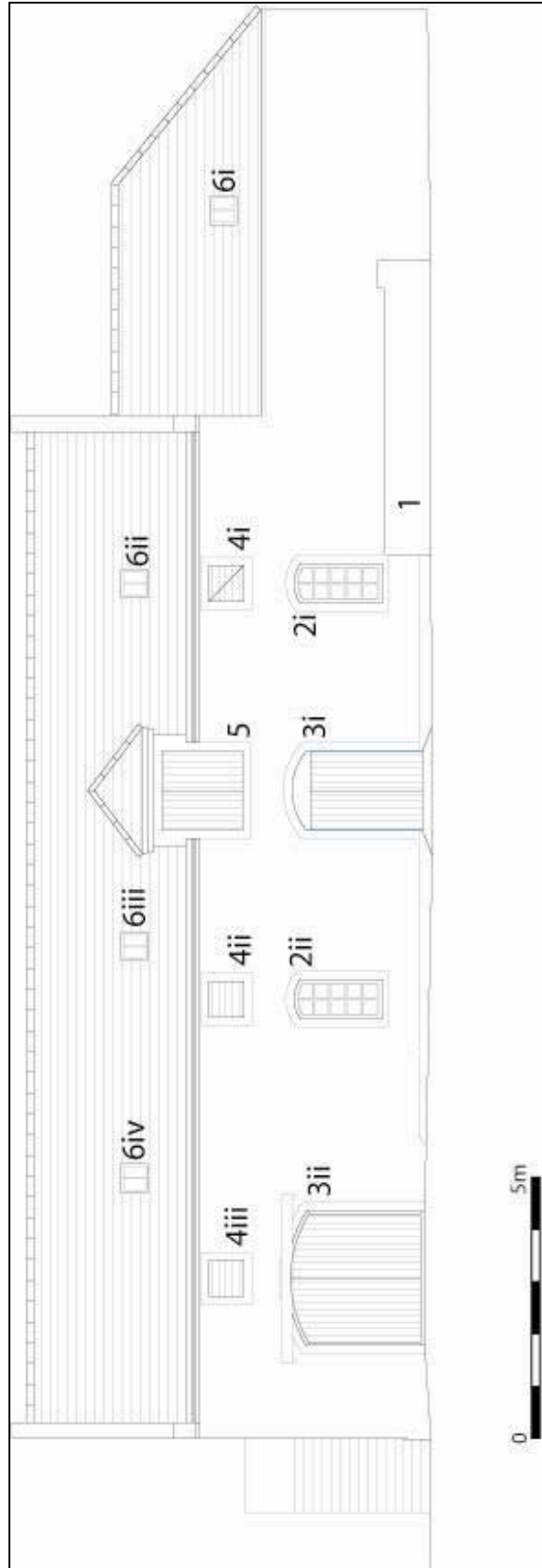


Figure 4: Southern Elevation (001)



Figure 5a: Southern wing and elevation



Figure 5b: Southern wing east end extension



Figure 6a: Windows 2 (i) & (ii) in the southern wing/elevation



Figure 6b: The centrally located segmentally arched doorway 3(i)



Figure 7a: Second storey window/air vent 4 (i)



Figure 7b: The centrally located second storey access (5)

*Room A*

24. Room A occupies the entire southern wing of (001) and is rectangular on plan measuring 26.3m by 5.5m with a total height of 7.5m (Figures 11a & 11b). Formally subdivided into two floors the remains of the upper storey were not accessible due to health and safety issues. The whole ground floor level has been whitewashed internally but the upper storey is not. The measurements already mentioned for the southern exterior elevation are the same for the interior. There are two further internal doorways, one that enters Room B measuring 1.30m by 2m, the other entering Room C measuring 1.20m by 2m. The floor is concrete and the roof rafters, webs, bottom and top chord all constructed from wood. Four steel girders are visible aligned north-south across the width of the room at the height of the first storey, these are later insertions and assumed to have provided support for the southern wing (Figures 11a & 11b). There are no other features within Room A apart from the door visible in the east elevation (Figure 11a).

*Room B*

25. Room B is rectangular in shape and measures 7.6m by 3.8m with a concrete floor and wooden ceiling joists and flooring at a height from the ground of 2.5m (Figure 12a). The north end of the room has been separated using chip board and has a modern doorway, 850mm by 2m, leading into the room behind (Room H) (Figure 11a). Prior to this partition both Rooms B & H would have formed the west wing of (001) (Figure 3).
26. On the west wall of Room B there is doorway 1(ii) and window 2(ii) that are visible in the external west elevation. The measurements are the same as those already mentioned. The southern wall has the doorway that provides access into Room A. All walls in Room B are white washed and there are modern electrical cables and pipes visible on the eastern wall (Figure 12b).

*Room C*

27. Room C is rectangular on plan and aligned east-west, measuring 7.6m by 22m by 6.0m in height and in poor condition with the slated roof gone and the wooden rafters and joists clearly visible (Figure 13a). With roof absent, there is a waterlogged floor with standing water and slurry (Figure 13a). In the east end of Room C is the door visible from the external east elevation. Located at the north end of the room is a concrete water/feed trough (I) aligned north-south, 7m in length with a total height of 900mm and a maximum width of 750mm. The internal dimensions of the trough are 550mm wide and 160mm in depth (Figure 13b). The central area of the north wall is open for 9m east-west which enables both Rooms C and D to be visible from each other (Figure 14a). There is also another concrete water/feed trough (II) (Figure 14a) which is 9m in length and has the same height and internal dimensions as trough (I).

*Room D*

28. Aligned north-south and located along the north wall there is a raised walkway, with a maximum width of 2.40m and with water/feed troughs (I, IV & V) sited on the eastern side (Figure 3). Centrally located within Room D and aligned west-east there is another raised walkway that runs between troughs (II & III), 980mm in width and slopes down to the east (Figure 14b). Also aligned west-east, trough (III) is 13m in length with the same internal height and internal dimensions. Aligned north-south and located to the north end of Room D is trough (IV) which is 5.6m in length with the same height and internal dimensions.
29. Rectangular in shape measuring 7.6m by 22m by 6.0m in the internal area of the room there is evidence where animal pens have been removed to produce a larger open area (Figure 14b). The condition of foundation remains for the animal pen walls would suggest that they have not been removed recently. There are the remains of five animal pens with dimensions approximately 4m by 3.5m. Further features include four skylights in the roof which is constructed by wooden rafters and joists with a slated roof. Within the middle of the north wall there is a cast iron water trough, measuring 900mm by 500mm. Within the eastern wall there is a door that measures 3m by 2.70m.

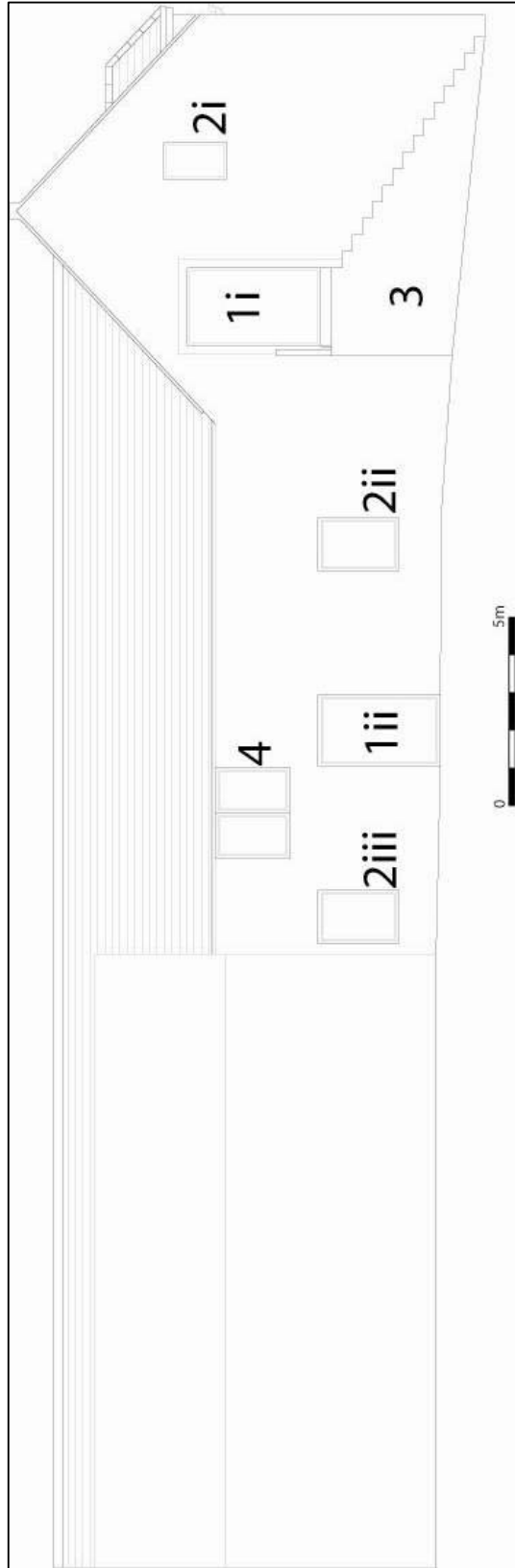


Figure 8: West elevation of (001)



Figure 9a: West elevation of (001) showing the welfare unit



Figure 9bi: West elevation of (001)



Figure 9bii: West elevation steps (3)



Figure 10a: East elevation (001)



Figure 10b: North elevation (001)





Figure 11a: Room A looking east showing where the extension has been added



Figure 11b: Room A looking west



Figure 12a: Room B illustrating the partition, floor and ceiling



Figure 12b: Room B east wall illustrating the white wash render, floor, ceiling and modern fixtures



Figure 13a: Room C looking east



Figure 13b: Water/food trough I at the north end of Room C



Figure 14a: Room C demonstrating trough II and the open plan into Room D



Figure 14b: Room D demonstrating trough III and the remains of the removed animal pens

### *Room E*

30. Again rectangular on plan, this room measures 12.2m by 22m and 6.0m high with a slated roof and wooden joists and rafters (Figure 15a) and whitewashed walls. Within the western wall there is one window (i) measuring 640mm by 1.10m and a doorway (ii) measuring 1.00m by 2.15m. There are another two water/feed troughs aligned east-west (V) measuring 10m in length and the other north-south trough (IV) measuring 13m in length, the internal dimensions are the same as the rest of the troughs.
31. Located at the north-east end of Room E is a small white washed animal pen (iii) (Figure 15b) with internal dimensions of 2.90m by 1.80m and a wall thickness of 260mm. There are three doorways (iv, v, vi) in the eastern wall with two (v, vi) located to the east of the animal pen and measuring 1.20m by 2.20m and doorway (iv) measuring 2.70m by 2.20m.

### *Room F*

32. A small rectangular room measuring 4.8m by 6m in extent and 5.9m high, with whitewashed walls, concrete floor and a slated roof with wooden joists and rafters. There are three doors (i, ii, iii); doorway one (i) measures 2m by 2.15m and leads to an external building. Doorways (ii & iii) both measure 1.00m by 2.15m, with doorway (ii) leading to Room E and doorway (iii) leading Room G (Figure 16a). There are no other features within Room F.

### *Room G*

33. Room G is a rectangular room measuring 4.8m by 19.8m and 5.9m high with a concrete floor and slated roof with wooden joists and rafters. Sited along the length of the north wall there are four animal pens (i-iv) constructed of wood (Figure 16b) and would appear to be modern temporary fixtures. Sited at the west end of Room G is a doorway measuring 1.20m by 2.20m, another is located on the southern wall with the same dimensions.

### *Room H*

34. Room H forms the northern end of the west wing and is currently used as a tack room and for general storage (Figure 17a) with the room being subdivided from Room B by a wooden partition (Figure 17b). The walls are whitewashed, the floor concrete, with a slated roof and wooden joists and rafters. There are modern breezeblock constructed animal pens located in the northern part of the room (Figure 17a). The dimensions of the room are 3.8m by 20m.

## Discussion

35. Having spoken with the client Mr Kevin McClean it was understood that (001) had been used as a stable for at least twenty-five years, the period in which he had visited and worked at Hatton House. Prior to that, the number of concrete troughs would also indicate that the building had been used for the shelter and housing of other livestock.



Figure 15a: Room E demonstrating the internal open area, concrete floor and roof



Figure 15b: Animal pen in Room E



Figure 16a: Room F showing the east wall and doorway (iii) (front) and doorway (iii) to the right of the image.



Figure 16b: Room G looking west and showing the animal pens



Figure 17a: Room H looking south.



Figure 17b: Room H showing the partition between Rooms B and H.



## Conclusion

36. A programme of archaeological works was required by Mr Kevin McClean before the proposed development of the eighteenth and nineteenth century steading into a dwellinghouse at Hatton Farm (NGR: NO 67537 67506). The surviving remains of this feature were subject to a Level 1 Historic Building Recording exercise, in order to create a baseline record of the surviving elements to record them before development.
37. The historic building recording survey confirmed that the southern wing and elevation (Room A) of the steading were in good condition and had a number of surviving original features that were observable and recorded. However, the remaining rooms (B-H) had suffered from an absence of use and therefore had in places fallen into disrepair. This was particularly evident in the roof of Room C. The removal of the nineteenth century central area of the steading will not impact on the overall form and fabric of the steading. It is felt that this document and photographic record provide a sound baseline and understanding of structure (001) and internal rooms before their conversion into a dwellinghouse.

## References

### *Documentary*

- |                  |         |  |
|------------------|---------|--|
| Rev Mr Brymer, J | 1791-99 | <i>Old Statistical Accounts, Marykirk, County of Kincardine Vol 18, pages 608-643.</i> |
| Rev Low, A. C.   | 1834-45 | <i>New Statistical Accounts, Marykirk, County of Kincardine Vol 11, pages 298-309.</i> |

### *Cartographic*

- |                 |         |  |
|-----------------|---------|--|
| Roy, W.         | 1747-52 | <i>Military Survey of Scotland, Highlands</i>  |
| Garden, W.      | 1797    | <i>A Map of Kincardineshire</i>  |
| Thomson, J.     | 1832    | <i>Kincardine Shire</i>  |
| Ordnance Survey | 1868    | <i>6-inch 1<sup>st</sup> Edition Ordnance Survey Kincardineshire Sheet XXIII</i>               |
| Ordnance Survey | 1904    | <i>6-inch 2<sup>nd</sup> Edition Ordnance Survey Kincardineshire SE Sheet XXVI and NE XXIX</i> |
| Ordnance Survey | 1928    | <i>6-inch 3<sup>rd</sup> Edition Ordnance Survey Kincardineshire SE Sheet XXVI and NE XXIX</i> |

## Appendix 1: Discovery & Excavation in Scotland

<b>LOCAL AUTHORITY:</b>	Aberdeenshire
<b>PROJECT TITLE/SITE NAME:</b>	Hatton Farm, Marykirk
<b>PROJECT CODE:</b>	RA13072
<b>PARISH:</b>	Marykirk
<b>NAME OF CONTRIBUTOR:</b>	Peter Klemen
<b>NAME OF ORGANISATION:</b>	Rathmell Archaeology Limited
<b>TYPE(S) OF PROJECT:</b>	Building Recording
<b>NMRS NO(S):</b>	35885
<b>SITE/MONUMENT TYPE(S):</b>	B-Listed Steading
<b>SIGNIFICANT FINDS:</b>	None
<b>NGR (2 letters, 6 figures)</b>	NO 67537 67506
<b>START DATE (this season)</b>	18 <sup>th</sup> October 2013
<b>END DATE (this season)</b>	18 <sup>th</sup> October 2013
<b>PREVIOUS WORK (incl. DES ref.)</b>	None
<b>MAIN (NARRATIVE) DESCRIPTION:</b> (may include information from other fields)	A programme of Historic Building Recording works required by Mr Kevin McClean in respect of the conversion of a redundant steading and associated structures to a dwellinghouse (planning application AB 2013/2135 and AB 2013/2151) at Hatton Farm, Marykirk, Aberdeenshire (NGR: NO 67537 67506). The works were designed to create a competent record of the B-listed eighteenth and nineteenth century steading before the commencement of the proposed conversion.
<b>PROPOSED FUTURE WORK:</b>	None
<b>CAPTION(S) FOR ILLUSTRS:</b>	None
<b>SPONSOR OR FUNDING BODY:</b>	Mr Kevin McClean
<b>ADDRESS OF MAIN CONTRIBUTOR:</b>	Unit 8 Ashgrove Workshops, Kilwinning, Ayrshire KA13 6PU
<b>E MAIL:</b>	<a href="mailto:contact@rathmell-arch.co.uk">contact@rathmell-arch.co.uk</a>
<b>ARCHIVE LOCATION (intended/deposited)</b>	Report to Aberdeenshire Council Archaeology Service and archive to National Monuments Record of Scotland.

## Appendix 2: Photo Register

### *Photographic Register*

Image No.	Print		Slide		Digital	Description	From	Date
	Film No.	Neg. No.	Film No.	Neg. No.				
001	-	-	-	-	001	Exterior south elevation of Building A (Listed component)	S	18/10/13
002	-	-	-	-	002	Oblique view of the front south facing elevation, Building A	SW	18/10/13
003	-	-	-	-	003	Eastern extension of the Building A, south facing elevation	S	18/10/13
004	-	-	-	-	004	Eastern extension (19 <sup>th</sup> century) with modern shed	SE	18/10/13
005	-	-	-	-	005	Disused water trough, saddles the 18 <sup>th</sup> century and extension	S	18/10/13
006	-	-	-	-	006	Exterior bottom east window (1), Building A south elevation	S	18/10/13
007	-	-	-	-	007	Exterior upper east window (3), Building A south elevation	S	18/10/13
008	-	-	-	-	008	Exterior central door (6), Building A south elevation	S	18/10/13
009	-	-	-	-	009	Exterior Hayloft door/access (8) Building A south elevation	S	18/10/13
010	-	-	-	-	010	Exterior drain pipe (9) with windows (1) & (3)	S	18/10/13
011	-	-	-	-	011	Exterior drain pipe (10) with windows (2) & (4)	S	18/10/13
012	-	-	-	-	012	Exterior window (2)	S	18/10/13
013	-	-	-	-	013	Exterior window (4)	S	18/10/13
014	-	-	-	-	014	Exterior window (5)	S	18/10/13
015	-	-	-	-	015	Exterior western door (7)	S	18/10/13
016	-	-	-	-	016	West facing elevation and stairs Building A	SW	18/10/13
017	-	-	-	-	017	West facing elevation and stairs Building A	NW	18/10/13
018	-	-	-	-	018	Illustrating the form of the construction of the west facing elevation	W	18/10/13

Image No.	Print		Slide		Digital	Description	From	Date
	Film No.	Neg. No.	Film No.	Neg. No.				
019	-	-	-	-	019	Illustrating the form of the construction of the west facing elevation	W	18/10/13
020	-	-	-	-	020	Eastern extension showing the construction form	S	18/10/13
021	-	-	-	-	021	Looking North onto stairs (3) west elevation	S	18/10/13
022	-	-	-	-	022	Window (2) in west elevation	W	18/10/13
023	-	-	-	-	023	Door in west elevation (1)	W	18/10/13
024	-	-	-	-	024	Showing welfare unit blocking the North area of the West elevation	NW	18/10/13
025	-	-	-	-	025	Cobbles in front of the West door (7), South facing elevation	W	18/10/13
026	-	-	-	-	026	Cobbles in front of the West door (7), South facing elevation	S	18/10/13
027	-	-	-	-	027	East facing elevation	SE	18/10/13
028	-	-	-	-	028	Building/room B, North wall	S	18/10/13
029	-	-	-	-	029	Building/room B, East wall	SW	18/10/13
030	-	-	-	-	030	Building/room B, East wall North end	W	18/10/13
031	-	-	-	-	031	Building/room B, East wall South end	W	18/10/13
032	-	-	-	-	032	Building/room B South wall	N	18/10/13
033	-	-	-	-	033	Building/room B, West wall South end	E	18/10/13
034	-	-	-	-	034	Building/room B, West wall North end	E	18/10/13
035	-	-	-	-	035	Building/room B, West wall North end	E	18/10/13
036	-	-	-	-	036	Floor of building/room B	N	18/10/13
037	-	-	-	-	037	Ceiling of building/room B from North	N	18/10/13
038	-	-	-	-	038	Ceiling of building/room B from South	S	18/10/13
039	-	-	-	-	039	Building/room A, East end from centre of the room	W	18/10/13

Image No.	Print		Slide		Digital	Description	From	Date
	Film No.	Neg. No.	Film No.	Neg. No.				
040	-	-	-	-	040	Building/room A, West end from centre of the room	E	18/10/13
041	-	-	-	-	041	West end of building/room A, ceiling	E	18/10/13
042	-	-	-	-	042	East end of building/room A, ceiling	W	18/10/13
043	-	-	-	-	043	Floor of building/room A	W	18/10/13
044	-	-	-	-	044	Area where 18 <sup>th</sup> Century and extension join	W	18/10/13
045	-	-	-	-	045	Ceiling of building/room A from West	W	18/10/13
046	-	-	-	-	046	Interior of building/room A west door (7)	N	18/10/13
047	-	-	-	-	047	Interior of building/room A windows (2), (4) and (11 iii)	N	18/10/13
048	-	-	-	-	048	Interior of building/room A central door (6) and hayloft access (8)	N	18/10/13
049	-	-	-	-	049	Interior of building/room A windows (1), (3) and (11 ii)	N	18/10/13
050	-	-	-	-	050	Interior of building/room A door (1) on the east facing elevation	W	18/10/13
051	-	-	-	-	051	East elevation door (1) on the east elevation extension	W	18/10/13
052	-	-	-	-	052	North wall, East end of building/room A	SW	18/10/13
053	-	-	-	-	053	South wall, East end of building/room A	NE	18/10/13
054	-	-	-	-	054	Joining area of the extension and main component of building/room A from the extension	E	18/10/13
055	-	-	-	-	055	Oblique view of building/room A interior North elevation, North wall	SE	18/10/13
056	-	-	-	-	056	Oblique view of building/room A interior South elevation, South wall	NW	18/10/13
057	-	-	-	-	057	Interior building/room A, West wall	E	18/10/13
058	-	-	-	-	058	Interior building/room C, West wall top half and roof	E	18/10/13

Image No.	Print		Slide		Digital	Description	From	Date
	Film No.	Neg. No.	Film No.	Neg. No.				
059	-	-	-	-	059	Interior building/room C, West wall bottom half with trough	E	18/10/13
060	-	-	-	-	060	Interior building/room C, East wall and door (2) on exterior of the East elevation, and roof and floor.	E	18/10/13
061	-	-	-	-	061	Interior building/room C, South wall/elevation, West end	N	18/10/13
062	-	-	-	-	062	Interior building/room C, South wall/elevation, East end	NW	18/10/13
063	-	-	-	-	063	Interior building/room C, North wall/elevation, East end	SW	18/10/13
064	-	-	-	-	064	Interior building/room C, North wall/elevation, West end	S	18/10/13
065	-	-	-	-	065	Step, leads into the interior of building/room C from the doorway.	E	18/10/13
066	-	-	-	-	066	Water trough (1) at the West end of building/room C	S	18/10/13
067	-	-	-	-	067	Cobbled flooring between building/rooms A&C	S	18/10/13
068	-	-	-	-	068	Raised walkway and steps at the West end of building/room C	S	18/10/13
069	-	-	-	-	069	View into buildings/rooms C, D, E & F, looking North	S	18/10/13
070	-	-	-	-	070	Interior building/room D, East elevation/wall into building/room I	W	18/10/13
071	-	-	-	-	071	Interior building/room D, West elevation/wall	E	18/10/13
072	-	-	-	-	072	Interior of building/room D ceiling	W	18/10/13
073	-	-	-	-	073	Floor of building/room D from the West, oblique	W	18/10/13
074	-	-	-	-	074	Floor of building/room D from the East, oblique	E	18/10/13
075	-	-	-	-	075	Showing remains of the removed animal pens	S	18/10/13
076	-	-	-	-	076	Showing remains of the removed animal pens	SE	18/10/13
077	-	-	-	-	077	Interior of building/room D, North elevation	SW	18/10/13

Image No.	Print		Slide		Digital	Description	From	Date
	Film No.	Neg. No.	Film No.	Neg. No.				
078	-	-	-	-	078	Interior of building/room D, North elevation	SE	18/10/13
079	-	-	-	-	079	Interior of building/room D, South elevation, West end	N	18/10/13
080	-	-	-	-	080	Interior of building/room D, South elevation central West end	N	18/10/13
081	-	-	-	-	081	Interior of building/room D, South elevation central East end	N	18/10/13
082	-	-	-	-	082	Interior of building/room D, South elevation, East end	N	18/10/13
083	-	-	-	-	083	Trough running E-W along the middle of the room	E	18/10/13
084	-	-	-	-	084	Trough running N-S at the West end of the building/room	S	18/10/13
085	-	-	-	-	085	View from the doorway of building/room D into building/room E	S	18/10/13
086	-	-	-	-	086	Floor of the interior of building/room E on the southern side	W	18/10/13
087	-	-	-	-	087	Floor of the interior of building/room E on the northern side	W	18/10/13
088	-	-	-	-	088	Ceiling of building/room E	W	18/10/13
089	-	-	-	-	089	Southern wall/elevation, building/room E, East end	N	18/10/13
090	-	-	-	-	090	Southern wall/elevation, building/room E, West end	N	18/10/13
091	-	-	-	-	091	Northern wall/elevation, East end of building/room E	S	18/10/13
092	-	-	-	-	092	Northern wall/elevation, West end of building/room E	S	18/10/13
093	-	-	-	-	093	General view of building/room E	W	18/10/13
094	-	-	-	-	094	Building/room E interior, West elevation, floor and ceiling	E	18/10/13
095	-	-	-	-	095	Building/room E interior, West elevation, floor and ceiling	W	18/10/13
096	-	-	-	-	096	Trough running (1) N-S of building/room E, West end	S	18/10/13
097	-	-	-	-	097	Trough running (2) E-W of building/room E, along North end	E	18/10/13
098	-	-	-	-	098	Animal pen, building/room E (3)	E	18/10/13



Image No.	Print		Slide		Digital	Description	From	Date
	Film No.	Neg. No.	Film No.	Neg. No.				
099	-	-	-	-	099	Animal pen, interior and floor of livestock pen (3)	E	18/10/13
100	-	-	-	-	100	Interior building/room I showing construction, floor and ceiling	N	18/10/13
101	-	-	-	-	101	Exterior of building/room I made from corrugated iron	S	18/10/13
102	-	-	-	-	102	Interior of building/room I	S	18/10/13
103	-	-	-	-	103	Interior building/room I into building/room C	E	18/10/13
104	-	-	-	-	104	Interior building/room I into building/room D	E	18/10/13
105	-	-	-	-	105	Interior building/room I into building/room E	E	18/10/13
106	-	-	-	-	106	Interior building/room I East wall/elevation	W	18/10/13
107	-	-	-	-	107	Interior building/room I West wall/elevation	E	18/10/13
108	-	-	-	-	108	Interior building/room F, West wall/elevation	E	18/10/13
109	-	-	-	-	109	Interior building/room F South wall/elevation	N	18/10/13
110	-	-	-	-	110	Interior building/room F North wall/elevation	W	18/10/13
111	-	-	-	-	111	Interior building/room F wall/elevation	N	18/10/13
112	-	-	-	-	112	Interior building/room F floor	E	18/10/13
113	-	-	-	-	113	Interior building/room F ceiling	E	18/10/13
114	-	-	-	-	114	Interior building/room G, East wall/elevation	NW	18/10/13
115	-	-	-	-	115	Interior building/room G West wall/elevation	NE	18/10/13
116	-	-	-	-	116	Interior building/room G North wall/elevation	S	18/10/13
117	-	-	-	-	117	Interior building/room G ceiling	N	18/10/13
118	-	-	-	-	118	Interior building/room G floor	N	18/10/13
119	-	-	-	-	119	Area still used for storage	E	18/10/13
120	-	-	-	-	120	Division between building/room B&G	NE	18/10/13

Image No.	Print		Slide		Digital	Description	From	Date
	Film No.	Neg. No.	Film No.	Neg. No.				
121	-	-	-	-	121	Interior building/room H, North side of West elevation	E	18/10/13
122	-	-	-	-	122	Interior building/room H, South side of West elevation	E	18/10/13
123	-	-	-	-	123	Cobbled floor of animal pens, with scale	E	18/10/13
124	-	-	-	-	124	Cobbled floor of animal pens	W	18/10/13
125	-	-	-	-	125	Flooring outside of the animal pens, along South edge	W	18/10/13
126	-	-	-	-	126	Flooring outside of the animal pens, along South edge	W	18/10/13
127	-	-	-	-	127	Building/room H interior, East elevation	W	18/10/13
128	-	-	-	-	128	Animal/livestock pens	E	18/10/13
129	-	-	-	-	129	Building/room H, southern elevation, West end	NE	18/10/13
130	-	-	-	-	130	Building/room H, southern elevation, East end	N	18/10/13
131	-	-	-	-	131	Building/room H, ceiling	E	18/10/13
132	-	-	-	-	132	Building/room H, North elevation, East end	SE	18/10/13
133	-	-	-	-	133	View from the driveway onto the South facing exterior elevation	S	18/10/13
134	-	-	-	-	134	View to West with the development building and outhouses	E	18/10/13
135	-	-	-	-	135	View to East with the development building and outhouses	W	18/10/13
136	-	-	-	-	136	North facing elevation of building/room H	N	18/10/13
137	-	-	-	-	137	North facing elevations of building/room H&I with building/room E's roof visible in middle	NW	18/10/13
138	-	-	-	-	138	Exterior West elevation of building/room F	N	18/10/13
139	-	-	-	-	139	Exterior West elevation of building/room G	W	18/10/13
140	-	-	-	-	140	Exterior West elevation of building/room G	W	18/10/13
141	-	-	-	-	141	Slit window (1) in the West face of building/room G	W	18/10/13

Image No.	Print		Slide		Digital	Description	From	Date
	Film No.	Neg. No.	Film No.	Neg. No.				
142	-	-	-	-	142	Slit window (2) in the West face of building/room G	W	18/10/13
143	-	-	-	-	143	Exterior of building/room B, West elevation	W	18/10/13
144	-	-	-	-	144	Exterior of building/room B, West elevation	W	18/10/13
145	-	-	-	-	145	Blocked access & trough in building/room D	S	18/10/13
146	-	-	-	-	146	Slit window (1) in the East elevation of building/room G looking into building/room H	E	18/10/13
147	-	-	-	-	147	Slit window (3) in the East elevation of building/room G looking building/room D	W	18/10/13
148	-	-	-	-	148	Slit window (3) in the West elevation of building/room G looking into the exterior from building/room H	E	18/10/13

## Contact Details

39. Rathmell Archaeology can be contacted at our Registered Office or through the web:  
Ayrshire Office:  
Rathmell Archaeology Ltd [www.rathmell-arch.co.uk](http://www.rathmell-arch.co.uk)  
Unit 8 Ashgrove Workshops  
Kilwinning t.: 01294 542848  
Ayrshire f.: 01294 542849  
KA13 6PU e.: [contact@rathmell-arch.co.uk](mailto:contact@rathmell-arch.co.uk)
40. Dundee Office:  
Rathmell Archaeology Ltd [www.rathmell-arch.co.uk](http://www.rathmell-arch.co.uk)  
23 King Street  
Broughty Ferry t.: 01382 339277  
Dundee m.: 07827 913796  
DD5 1HE e.: [peter.klemen@rathmell-arch.co.uk](mailto:peter.klemen@rathmell-arch.co.uk)
41. The Aberdeenshire Council Archaeology Service can be contacted at their office or through the web:  
Archaeology Service [www.aberdeenshire.gov.uk](http://www.aberdeenshire.gov.uk)  
Aberdeenshire Council IS  
Woodhill House t.: 01224 664221  
Westburn House  
Aberdeen  
AB16 5GB e.: [archaeology@aberdeenshire.gov.uk](mailto:archaeology@aberdeenshire.gov.uk)

End of Document