

# **Thirstone Quarry Phase 2, South Lanarkshire: Archaeological Evaluation**

## **Data Structure Report**



by Liam McKinstry

issued 21<sup>st</sup> October 2015

on behalf of Loudounhill Contracts Ltd

**RATHMELL**   
ARCHAEOLOGY LTD

## Quality Assurance

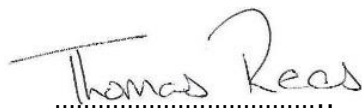
This report covers works which have been undertaken in keeping with the issued brief as modified by the agreed programme of works. The report has been prepared in keeping with the guidance of Rathmell Archaeology Limited on the preparation of reports. All works reported on within this document have been undertaken in keeping with the Chartered Institute for Archaeologists' Standards and Policy Statements and Code of Conduct.



Signed .....

Date ....21<sup>st</sup> October 2015....

In keeping with the procedure of Rathmell Archaeology Limited this document and its findings have been reviewed and agreed by an appropriate colleague:



Checked .....

Date ....19<sup>th</sup> October 2015....

Copyright Rathmell Archaeology Limited. All rights reserved.

No part of this report may be copied or reproduced by any means without prior written permission from Rathmell Archaeology Limited. If you have received this report in error, please destroy all copies in your possession or control.

This report has been prepared for the exclusive use of the commissioning party, unless otherwise agreed in writing by Rathmell Archaeology Limited. No liability is accepted by Rathmell Archaeology Limited for any use of this report, other than the purposes for which it was originally prepared and provided.

Opinions and information provided in the report are on the basis of Rathmell Archaeology Limited using due skill, care and diligence and no explicit warranty is provided as to their accuracy. No independent verification of any of the documents or information supplied to Rathmell Archaeology Limited has been made.

## Quality Assurance Data

Author(s)	Liam McKinstry		
Date of Issue	21 <sup>st</sup> October 2015	Version	1.0
Commissioning Body	Loudounhill Contracts Ltd		
Event Name	Thirstone Quarry Phase 2		
Event Type	Evaluation		
Event Date(s)	September 2015 - October 2015		
Rathmell Archaeology Code	RA11023	OASIS Ref	227435
Location	United Kingdom : Scotland : South Lanarkshire		
NGR	NS 8980 2724	Parish	Crawfordjohn
Designation(s)	None		
Canmore IDs	None		

## Contents

Introduction.....	3
Historical and Archaeological Background .....	3
Project Works .....	5
Findings .....	5
Discussion .....	7
Recommendations .....	7
Conclusion.....	7
Acknowledgements.....	7
References .....	7
Documentary .....	7
<i>Cartographic</i> .....	7
Appendix 1: Trench Details.....	10
Trench Summary.....	10
Appendix 2: Registers .....	14
Context Register .....	14
Photographic Register .....	15
Drawing Register.....	15
Appendix 3: Discovery & Excavation in Scotland.....	20
Contact Details.....	21

## Figures

Figure 1a: Roy's Military Survey (1752-55).....	4
Figure 1b: 1st Ordnance Survey (1863) .....	4
Figure 2: Trench Location Plan .....	6
Figure 3a: Post excavation view of Trench 1 from the W.....	8
Figure 3b: Post excavation view of Trench 25 from the NW .....	8
Figure 4a: View of haul road running through the site from the NW .....	9
Figure 4b: General view of the site from the W showing the old road .....	9

## Introduction

1. This Data Structure Report has been prepared for Johnson Poole and Bloomer Ltd on behalf of Loudounhill Contracts Ltd in respect to the extraction of 7.2ha within Phase 2 of consented development at Thirstone Sand and Gravel Quarry, Abington, South Lanarkshire. The archaeological works were designed to determine the nature, form and extent of any archaeology present within the development area and hence inform the appropriate mitigation to facilitate the development.
2. South Lanarkshire Council required a programme of archaeological works to be undertaken in support of any planning consent which may be granted by the planning authority. The West of Scotland Archaeology Service (WoSAS) who advise South Lanarkshire Council on archaeological matters, provided guidance on the structure of archaeological mitigation required on this site prior to the development works.
3. A Written Scheme of Investigation (Gordon 2013) provided the detail of the works (archaeological evaluation, exclusion, excavation, post-excavation analyses and publication) for the mitigation pertaining to any physical impact on buried sediments.

## Historical and Archaeological Background

4. The proposed extension to the extraction area at Thirstone Quarry overlay an area of rough pasture which did not, according to the West of Scotland Archaeology Service and Royal Commission on the Ancient & Historical Monuments of Scotland, contain any known archaeological sites.
5. An evaluation at 5% sample intensity was undertaken prior to the re-opening of Thirstone Quarry for sand and gravel extraction in 2007 by GUARD (WoSAS Event: 3724). This evaluated the ground within the then-proposed extraction area that had not been previously subject to extraction (see Figure 2 for extent of this area). This study evidenced a topsoil depth varying from 0.15 to 0.5m overlying a variable sand and gravel subsoil; within an area of impeded drainage in the southwest peat extending to 0.7m depth was exposed. However, the evaluation did not locate any significant archaeological features or recover any finds.
6. A further four evaluations at the 5% sample intensity were undertaken for the extension of Thirstone Quarry by Rathmell Archaeology since 2012. These evaluated ground to the immediate south of the M74 (east and west of the access track) and Phases 1 and 3a of the current scheme, with none of the evaluations locating any significant archaeological features or recovering any finds.
7. The closest known site lies some 350m southeast of the proposed extraction area, and refers to a group of 19 small cairns, measuring up to 3m in diameter by 0.5m in height. These are spread in a random manner on the southwest slopes of White Rig at 295m OD (centred on NGR: 28990 62620; WoSAS Site: 12657). They were first identified by Tam Ward of the Biggar Archaeology Group, who also noted that the two largest and most northerly cairns of the group had been removed by quarrying operations for the M74 road (T Ward 1990).
8. A review of historic mapping also failed to locate any additional sites of archaeological interest. When mapped in the mid-18th century as part of Roy's Military Survey of Scotland (1747-55) the proposed extraction area is marked as unused hill ground (see Figure 1a) lying to the east of the Sanquhar to Lanark road as it runs north from Crawfordjohn.
9. Throughout the entire run of the Ordnance Survey historic mapping, the site is shown as rough pasture lying to the north-west of Thirstone, a small farm that appears on maps from the mid nineteenth century. At the same time, the road running north from Crawfordjohn peters out immediately to the north of Thirstone, suggesting that this route has been replaced by newer roads. The 2nd edition Ordnance Survey map of 1912 shows the farm with a number of associated small enclosures and sheepfolds (Figure 1b). However, none of this activity comes close to the proposed extension area and these structures are still identifiable on the modern Ordnance Survey mapping (see map underlying information on Figure 2).



Figure 1a: Roy's Military Survey (1752-55)



Figure 1b: 1st Ordnance Survey (1863)

## Project Works

10. An archaeological evaluation was undertaken between 28<sup>th</sup> September and 1<sup>st</sup> October 2015. This consisted of the excavation of a series of intrusive trenches for the purposes of exposing a 5% sample of the available ground within the development area (roughly 7.2ha) to be archaeologically examined.
11. In total, 186.5 linear metres were excavated with a 2m wide bucket equalling an area of 3529.7m<sup>2</sup>. This was slightly less than the 3600m<sup>2</sup> required for the purposes of this investigation this was due to the recent construction of a hall road which linked two previously tested areas (Phases 3a and 1) to the immediate northeast and southwest of the Phase 2 area. The road obscured Trenches 14 and 20 and partially obscured Trenches 18, 19 and 21. Due to this the trench layout was altered slightly. The position of the trenches is depicted on the site plan below (Figure 2).
12. All works were conducted in accordance with the Chartered Institute for Archaeologists' Standards and Policy Statements and Code of Conduct and Historic Scotland Policy Statements.

## Findings

13. In all, 34 evaluation trenches were excavated by a 13 ton excavator using a smooth 2m ditching bucket; details of the trenches may be found in Appendix 1 of this document. Included below is a synthesis of the findings and interpretation from these trenches.
14. The development area was situated to the immediate south of a small disused road (Figure 4b) and between the previous Rathmell Archaeology evaluation areas (Figure 2). The topography of the site consisted of a series of low undulating rises within an area of heathland which in places was lower lying and waterlogged. A small number of modern drainage ditches were noted close to the south eastern part of the development area though none were identified within the trenched area. A recently constructed haul road ran through the central part of the site (Figure 4a) in an approximate northeast to southwest direction which led to a slight rearrangement in the layout and number of trenches.
15. The topsoil (001) covering most of the site and excavated trenches was a naturally occurring peat-like soil which comprised of friable dark brown-black, silty clay with occasional patches of small stone. The depth range of the topsoil throughout the site was between 0.1m to 0.77m. The average depth throughout the site was 0.28m.
16. Two main subsoil types were identified within the excavated trenches as bands or patches throughout the site (Figure 3b). The first of these (005) comprised of a friable, mid orange-brown, sandy silt with frequent sub-angular stone and pebble inclusions. The second subsoil type (006) comprised of loosely compacted, light grey-brown, silty sand with frequent stone gravel and small stone inclusions.
17. The exception to this was within Trench 1 (Figure 3a) which was located slightly away from the other trenches in the easternmost part of the site. Three subsoil types were identified within Trench 1. The first of these (002) comprised of a firmly compacted, yellow-orange, silty sand with frequent sub-angular inclusions. The second subsoil type (003) comprised of softly compacted, light grey-brown, slightly silty clay with occasional stone and gravel inclusions. The third subsoil type (004) comprised of softly compacted, mid black-grey, slightly silty clay with occasional small stone and gravel inclusions.
18. No significant archaeological features or artefacts were recovered from any of the trenches within the site.



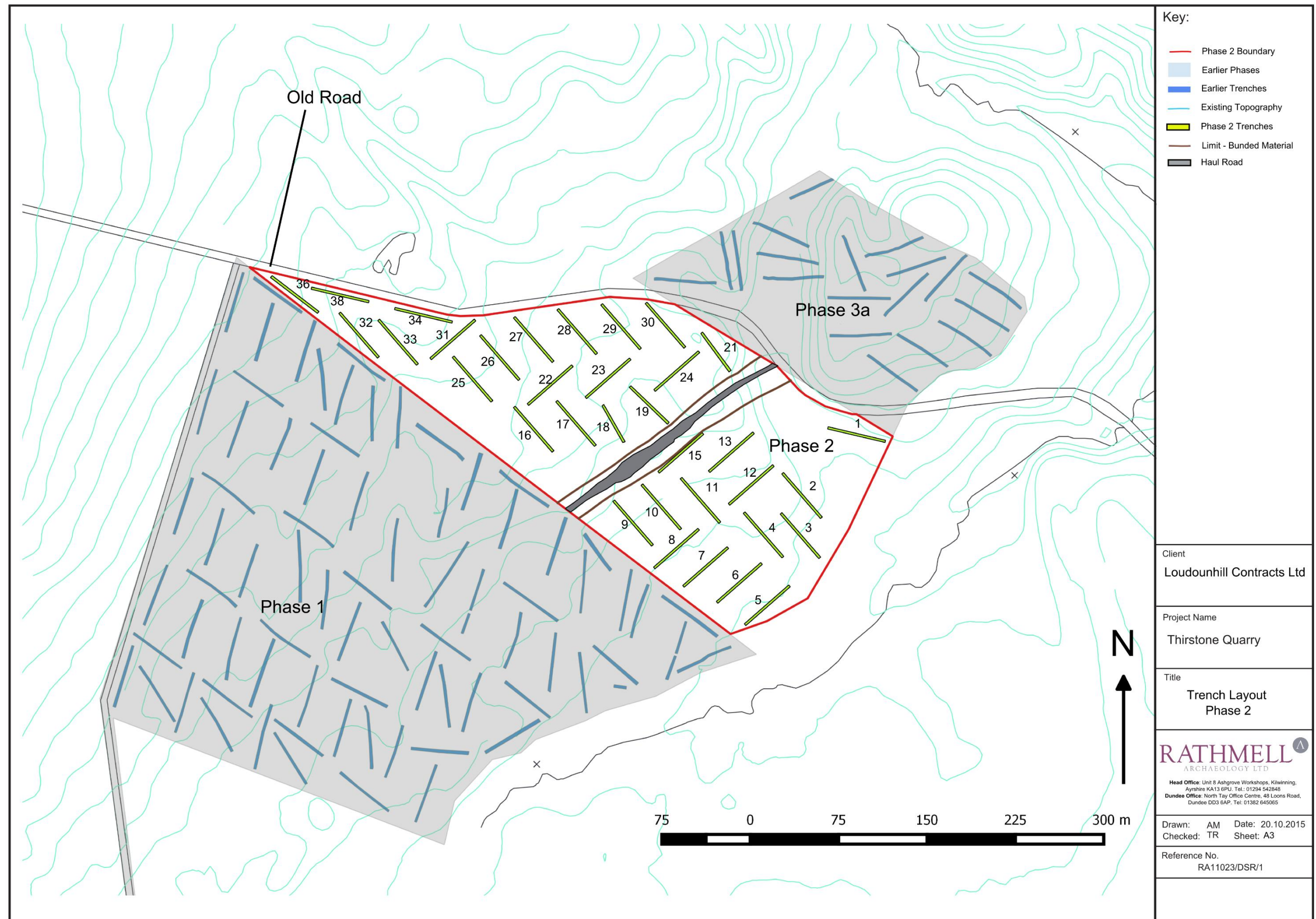


Figure 2: Trench Location Plan

## Discussion

19. No significant archaeological features were uncovered during the excavation of the trenches within Phase 3a. This seems to corroborate the historic mapping evidence which showed very little evidence for human activity within the development area with the exception of the old farm road. The limited human activity on site seems to be caused in part by the topography of the site where lower lying areas of bad drainage and the acidic peat-like topsoil would have made the area unsuitable for most types of agriculture with the exception of its current use as rough grazing for sheep.

## Recommendations

20. No significant archaeological remains were located within the development area and the only features observed suggested modern use of the site.
21. On balance, given the lack of significant archaeological material recovered in the course of the evaluation works, Rathmell Archaeology Ltd recommends that no further archaeological work be carried out within this development area.
22. The appropriateness and acceptability of our recommendations rest with South Lanarkshire Council and their advisors, the West of Scotland Archaeology Service.

## Conclusion

23. A programme of archaeological works was required by Loudoun Hill Contracts Ltd in respect to the proposed extraction of 7.2ha within Phase 2 of consented development at Thirstone Sand and Gravel Quarry, Abington, South Lanarkshire. The archaeological works were designed to deliver the appropriate archaeological mitigation to facilitate the development.
24. No significant archaeological remains or artefacts were uncovered from the excavated trenches.

## Acknowledgements

25. The author would like to thank Johnson Poole and Bloomer Ltd and Loudounhill Contracts Ltd, for the opportunity to carry out these works and also to Paul Robins at the West of Scotland Archaeology Service who gave support and guidance throughout. We would also like to thank Joss Durnan for his assistance on site, Alan Matthews for his illustration work and Thomas Rees for his editing of this report.

## References

### *Documentary*

Gorman, D. and Gordon, D. 2012. *Thirstone Quarry, South Lanarkshire: Archaeological Mitigation, Written Scheme of Investigation*, unpublished commercial report by Rathmell Archaeology Ltd

Gordon, D. 2013. *Thirstone Quarry, South Lanarkshire: Archaeological Evaluation, Written Scheme of Investigation*, unpublished commercial report by Rathmell Archaeology Ltd

McKinstry, L. 2014. *Thirstone Quarry Extension Phase 3a, South Lanarkshire: Archaeological Evaluation, Data Structure Report*, unpublished commercial report by Rathmell Archaeology Ltd

### *Cartographic*

Roy, W. 1752-55. Roy's map of the Lowlands

Ordnance Survey, 1863, 6-inch 1<sup>st</sup> edition, Lanarkshire

Ordnance Survey, 1863, 6-inch 2<sup>nd</sup> edition, Lanarkshire





Figure 3a: Post excavation view of Trench 1 from the W



Figure 3b: Post excavation view of Trench 25 from the NW





Figure 4a: View of haul road running through the site from the NW



Figure 4b: General view of the site from the W showing the old road

## Appendix 1: Trench Details

Within this appendix a standardised set of data pertaining to the evaluation trenches is presented.

All measurement distances quoted along the trench measure based on the quoted orientation of the trench.

### *Trench Summary*

Trench	Orientation	Size	Topsoil Depth	Subsoil Character	Modern/ Agricultural Features	Significant Features	Artefacts
1	E-W	2m by 51.2m 102.4m <sup>2</sup>	400 to 600mm	(002) Firm yellow-orange silty sand with frequent sub-angular inclusions, (003) soft light grey-brown slightly silty clay with occasional stone and gravel inclusions, (004) soft mid-black-grey slightly silty clay with occasional small stone and gravel inclusions.	None	None	None
2	NW-SE	2m by 51.1m 102.2m <sup>2</sup>	300 to 330mm	(005) Friable mid orange-brown sandy silt with occasional small sub-angular stone and pebble inclusions.	None	None	None
3	NW-SE	2m by 50m 100m <sup>2</sup>	290 to 650mm	(005) Friable mid orange-brown sandy silt with occasional small sub-angular stone and pebble inclusions, (006) Loose light grey-brown silty sand with frequent gravel and small stone inclusions.	None	None	None
4	NW-SE	2m by 53.2m 106.2m <sup>2</sup>	290 to 400mm	(005) Friable mid orange-brown sandy silt with occasional small sub-angular stone and pebble inclusions	None	None	None
5	NE-SW	2m by 51.6m 103.2m <sup>2</sup>	300mm	(005) Friable mid orange-brown sandy silt with occasional small sub-angular stone and pebble inclusions	None	None	None
6	NE-SW	2m by 53.5m 107m <sup>2</sup>	300 to 390mm	(005) Friable mid orange-brown sandy silt with occasional small sub-angular stone and pebble inclusions, (006) Loose light grey-brown silty sand with frequent gravel and small stone inclusions.	None	None	None
7	NE-SW	2m by	390 to	(006) Loose light grey-brown silty sand with	None	None	None

Trench	Orientation	Size	Topsoil Depth	Subsoil Character	Modern/ Agricultural Features	Significant Features	Artefacts
		51.7m 103.4m <sup>2</sup>	560mm	frequent gravel and small stone inclusions.			
8	NE-SW	2m by 50m 100m <sup>2</sup>	360 to 490mm	(005) Friable mid orange-brown sandy silt with occasional small sub-angular stone and pebble inclusions, (006) Loose light grey-brown silty sand with frequent gravel and small stone inclusions.	None	None	None
9	NW-SE	2m by 52.4m 104.8m <sup>2</sup>	440mm	(005) Friable mid orange-brown sandy silt with occasional small sub-angular stone and pebble inclusions	None	None	None
10	NW-SE	2m by 52m 104m <sup>2</sup>	340 to 380mm	(005) Friable mid orange-brown sandy silt with occasional small sub-angular stone and pebble inclusions	None	None	None
11	NW-SE	2m by 52.6m 105.2m <sup>2</sup>	370 to 440mm	(005) Friable mid orange-brown sandy silt with occasional small sub-angular stone and pebble inclusions	None	None	None
12	NE-SW	2m by 56m 112m <sup>2</sup>	400 to 490mm	(005) Friable mid orange-brown sandy silt with occasional small sub-angular stone and pebble inclusions	None	None	None
13	NE-SW	2m by 52m 104m <sup>2</sup>	230 to 400mm	(005) Friable mid orange-brown sandy silt with occasional small sub-angular stone and pebble inclusions	None	None	None
14	-	-	-	-	-	-	-
15	NE-SW	2m by 50m 100m <sup>2</sup>	360 to 480mm	(005) Friable mid orange-brown sandy silt with occasional small sub-angular stone and pebble inclusions	None	None	None
16	NW-SE	2m by 54.4m	230 to 420mm	(005) Friable mid orange-brown sandy silt with occasional small sub-angular stone and pebble	None	None	None



Trench	Orientation	Size	Topsoil Depth	Subsoil Character	Modern/ Agricultural Features	Significant Features	Artefacts
		108.8m <sup>2</sup>		inclusions			
17	NW-SE	2m by 52.3m 104.6m <sup>2</sup>	280 to 650mm	(005) Friable mid orange-brown sandy silt with occasional small sub-angular stone and pebble inclusions	None	None	None
18	NW-SE	2m by 36.4m 72.8m <sup>2</sup>	240 to 300mm	(005) Friable mid orange-brown sandy silt with occasional small sub-angular stone and pebble inclusions	None	None	None
19	NW-SE	2m by 44m 88m <sup>2</sup>	400 to 500mm	(005) Friable mid orange-brown sandy silt with occasional small sub-angular stone and pebble inclusions	None	None	None
20	-	-	-	-	-	-	-
21	NW-SE	2m by 42.6m 85.2m <sup>2</sup>	300mm	(005) Friable mid orange-brown sandy silt with occasional small sub-angular stone and pebble inclusions	None	None	None
22	NE-SW	2m by 50m 100m <sup>2</sup>	300 to 360mm	(005) Friable mid orange-brown sandy silt with occasional small sub-angular stone and pebble inclusions	None	None	None
23	NE-SW	2m to 62m 124m <sup>2</sup>	300 to 310mm	(005) Friable mid orange-brown sandy silt with occasional small sub-angular stone and pebble inclusions	None	None	None
24	NE-SW	2m by 55m 110m <sup>2</sup>	400 to 520mm	(005) Friable mid orange-brown sandy silt with occasional small sub-angular stone and pebble inclusions	None	None	None
25	NW-SE	2m by 50.2m 100.4m <sup>2</sup>	120 to 550mm	(005) Friable mid orange-brown sandy silt with occasional small sub-angular stone and pebble inclusions	None	None	None

Trench	Orientation	Size	Topsoil Depth	Subsoil Character	Modern/ Agricultural Features	Significant Features	Artefacts
26	NW-SE	2m by 50.3m 100.6m <sup>2</sup>	200 to 280mm	(005) Friable mid orange-brown sandy silt with occasional small sub-angular stone and pebble inclusions	None	None	None
27	NW-SE	2m by 50m 100m <sup>2</sup>	200 to 320mm	(005) Friable mid orange-brown sandy silt with occasional small sub-angular stone and pebble inclusions	None	None	None
28	NW-SE	2m by 51.5m 103m <sup>2</sup>	340 to 400mm	(005) Friable mid orange-brown sandy silt with occasional small sub-angular stone and pebble inclusions	None	None	None
29	NW-SE	2m by 56m 112m <sup>2</sup>	300 to 360mm	(005) Friable mid orange-brown sandy silt with occasional small sub-angular stone and pebble inclusions	None	None	None
30	NW-SE	2m by 51.5m 103m <sup>2</sup>	260 to 380mm	(005) Friable mid orange-brown sandy silt with occasional small sub-angular stone and pebble inclusions	None	None	None
31	NE-SW	2m by 50m 100m <sup>2</sup>	260 to 500mm	(005) Friable mid orange-brown sandy silt with occasional small sub-angular stone and pebble inclusions	None	None	None
32	NW-SE	2m by 50.3m 100.6m <sup>2</sup>	130 to 470mm	(005) Friable mid orange-brown sandy silt with occasional small sub-angular stone and pebble inclusions	None	None	None
33	NW-SE	2m by 50.6m 101.2 m <sup>2</sup>	700 to 770mm	(005) Friable mid orange-brown sandy silt with occasional small sub-angular stone and pebble inclusions	None	None	None
34	WNW-ESE	2m by 50m	230 420mm	(005) Friable mid orange-brown sandy silt with occasional small sub-angular stone and pebble inclusions	None	None	None

Trench	Orientation	Size	Topsoil Depth	Subsoil Character	Modern/ Agricultural Features	Significant Features	Artefacts
		100m <sup>2</sup>					
35	WNW-ESE	2m by 50m 100m <sup>2</sup>	200 to 360mm	(005) Friable mid orange-brown sandy silt with occasional small sub-angular stone and pebble inclusions	None	None	None
36	NW-SE	2m by 51m 102m <sup>2</sup>	160 to 340mm	(005) Friable mid orange-brown sandy silt with occasional small sub-angular stone and pebble inclusions	None	None	None

## Appendix 2: Registers

Within this appendix are all registers pertaining to works on-site during the evaluation.

### Context Register

Context No.	Area/ Trench	Type	Description	Interpretation
001	All	Deposit	Friable dark brown-black silty clay (peat) with occasional patches of small stones and gravel.	Topsoil
002	1	Deposit	Firm yellow-orange silty sand with frequent sub-angular inclusions.	Natural subsoil
003	1	Deposit	Soft light grey-brown slightly silty clay with occasional stone and gravel inclusions.	Natural subsoil
004	1	Deposit	Soft mid-black-grey slightly silty clay with occasional small stone and gravel inclusions.	Natural subsoil
005	2 to 6, 8 to 36	Deposit	Friable mid orange-brown sandy silt with occasional small sub-angular stone and pebble inclusions.	Natural subsoil
006	3, 6, 7, 8	Deposit	Loose light grey-brown silty sand with frequent gravel and small stone inclusions.	Natural subsoil

*Drawing Register*

Drawing No.	Sheet No.	Area/ Trench	Drawing Type	Scale	Description	Drawer	Date
001	1	1	Plan	1:50	Plan of Trench 1	LMcK	29/9/15
002	1	2	Plan	1:50	Plan of Trench 2	LMcK	29/9/15
003	1	3	Plan	1:50	Plan of Trench 3	LMcK	29/9/15
004	1	4	Plan	1:50	Plan of Trench 4	LMcK	29/9/15
005	1	5	Plan	1:50	Plan of Trench 5	LMcK	29/9/15
006	1	6	Plan	1:50	Plan of Trench 6	LMcK	29/9/15
007	2	7	Plan	1:50	Plan of Trench 7	LMcK	29/9/15
008	2	8	Plan	1:50	Plan of Trench 8	LMcK	29/9/15
009	2	9	Plan	1:50	Plan of Trench 9	LMcK	29/9/15
010	2	10	Plan	1:50	Plan of Trench 10	LMcK	30/9/15
011	2	11	Plan	1:50	Plan of Trench 11	LMcK	30/9/15
012	2	12	Plan	1:50	Plan of Trench 12	LMcK	30/9/15
013	3	13	Plan	1:50	Plan of Trench 13	LMcK	30/9/15
014	3	15	Plan	1:50	Plan of Trench 15	LMcK	30/9/15
015	3	16	Plan	1:50	Plan of Trench 16	LMcK	30/9/15
016	3	22	Plan	1:50	Plan of Trench 22	LMcK	30/9/15
017	3	17	Plan	1:50	Plan of Trench 17	LMcK	30/9/15
018	3	18	Plan	1:50	Plan of Trench 18	LMcK	30/9/15
019	3	19	Plan	1:50	Plan of Trench 19	LMcK	30/9/15



Drawing No.	Sheet No.	Area/ Trench	Drawing Type	Scale	Description	Drawer	Date
020	4	24	Plan	1:50	Plan of Trench 24	LMcK	30/9/15
021	4	21	Plan	1:50	Plan of Trench 21	LMcK	30/9/15
022	4	30	Plan	1:50	Plan of Trench 30	LMcK	30/9/15
023	4	29	Plan	1:50	Plan of Trench 29	LMcK	30/9/15
024	4	28	Plan	1:50	Plan of Trench 28	LMcK	30/9/15
025	5	23	Plan	1:50	Plan of Trench 23	LMcK	30/9/15
026	5	25	Plan	1:50	Plan of Trench 25	LMcK	30/9/15
027	5	26	Plan	1:50	Plan of Trench 26	LMcK	30/9/15
028	5	31	Plan	1:50	Plan of Trench 31	LMcK	1/10/15
029	5	33	Plan	1:50	Plan of Trench 33	LMcK	1/10/15
030	5	32	Plan	1:50	Plan of Trench 32	LMcK	1/10/15
031	5	36	Plan	1:50	Plan of Trench 36	LMcK	1/10/15
032	6	35	Plan	1:50	Plan of Trench 35	LMcK	1/10/15
033	6	34	Plan	1:50	Plan of Trench 34	LMcK	1/10/15
034	6	27	Plan	1:50	Plan of Trench 27	LMcK	1/10/15

*Photographic Register*

Image No.	Digital	Description	From	Date
001	1558	Post-ex Trench 1	W	W
002	1559	Post-ex Trench 1	E	E
003	1560	Post-ex Trench 2	NW	NW
004	1561	Post-ex Trench 2	SE	SE
005	1562	Post-ex Trench 3	SE	SE
006	1563	Post-ex Trench 3	NW	NW
007	1564	Post-ex Trench 4	SE	SE
008	1565	Post-ex Trench 4	NW	NW
009	1566	Post-ex Trench 5	NE	NE
010	1567	Post-ex Trench 5	SW	SW
011	1568	Post-ex Trench 6	SW	SW
012	1569	Post-ex Trench 6	NE	NE
013	1570	Post-ex Trench 7	SW	28/9/15
014	1571	Post-ex Trench 7	NE	28/9/15
015	1572	Post-ex Trench 8	SW	28/9/15
016	1573	Post-ex Trench 8	NE	28/9/15
017	1574	Post-ex Trench 9	SE	28/9/15
018	1575	Post-ex Trench 9	NW	28/9/15
019	1576	Post-ex Trench 10	SE	28/9/15
020	1577	Post-ex Trench 10	NW	28/9/15
021	1578	Post-ex Trench 11	SE	28/9/15
022	1579	Post-ex Trench 11	NW	28/9/15
023	1580	Post-ex Trench 12	SW	28/9/15
024	1581	Post-ex Trench 12	ME	28/9/15
025	1582	Post-ex Trench 13	SW	28/9/15
026	1583	Post-ex Trench 13	NE	28/9/15
027	1584	Post-ex Trench 15	SW	28/9/15
028	1585	Post-ex Trench 15	NE	28/9/15
029	1586	Post-ex Trench 22	NE	28/9/15
030	1587	Post-ex Trench 22	SW	28/9/15
031	1588	Post-ex Trench 23	NE	28/9/15

Image No.	Digital	Description	From	Date
032	1589	Post-ex Trench 23	SW	28/9/15
033	1590	Post-ex Trench 24	NE	28/9/15
034	1591	Post-ex Trench 24	SW	28/9/15
035	1592	Post-ex Trench 30	SE	28/9/15
036	1593	Post-ex Trench 30	NW	28/9/15
037	1594	Post-ex Trench 29	NW	28/9/15
038	1595	Post-ex Trench 29	SE	28/9/15
039	1596	Post-ex Trench 28	NW	28/9/15
040	1597	Post-ex Trench 28	SE	28/9/15
041	1598	Post-ex Trench 27	NW	29/9/15
042	1599	Post-ex Trench 27	SE	29/9/15
043	1600	Post-ex Trench 26	NW	29/9/15
044	1601	Post-ex Trench 26	SE	29/9/15
045	1602	Post-ex Trench 25	NW	29/9/15
046	1603	Post-ex Trench 25	SE	29/9/15
047	1604	Post-ex Trench 31	SW	29/9/15
048	1605	Post-ex Trench 31	NE	29/9/15
049	1606	Post-ex Trench 33	NW	29/9/15
050	1607	Post-ex Trench 33	SE	29/9/15
051	1608	Post-ex Trench 34	E	29/9/15
052	1609	Post-ex Trench 34	W	29/9/15
053	1610	Post-ex Trench 32	NW	29/9/15
054	1611	Post-ex Trench 32	SE	29/9/15
055	1612	Post-ex Trench 35	W	29/9/15
056	1613	Post-ex Trench 35	E	29/9/15
057	1614	Post-ex Trench 36	NW	29/9/15
058	1615	Post-ex Trench 36	SE	29/9/15
059	1616	Post-ex Trench 16	NW	29/9/15
060	1617	Post-ex Trench 16	SE	29/9/15
061	1618	Post-ex Trench 17	SE	29/9/15
062	1619	Post-ex Trench 17	NW	29/9/15
063	1620	Post-ex Trench 18	SE	29/9/15

Image No.	Digital	Description	From	Date
064	1621	Post-ex Trench 18	NW	29/9/15
065	1622	Post-ex Trench 19	NW	29/9/15
066	1623	Post-ex Trench 19	SE	29/9/15
067	1624	Post-ex Trench 21	SE	29/9/15
068	1625	Post-ex Trench 21	NW	29/9/15
069	1626	General shot of gravel road through Phase 3, from SE end of Trench 21	NW	29/9/15
070	1627	General shot of Phase 3 from the NE end of gravel road	SE	29/9/15
071	1628	General shot of gravel road through Phase 3	SW	30/9/15
072	1629	General shot of Phase 3 from right of way at W end of Trench 36	W	30/9/15
073	1630	General shot of Phase 3 from right of way at the middle of Trench 32	W	30/9/15



## Appendix 3: Discovery & Excavation in Scotland

<b>LOCAL AUTHORITY:</b>	South Lanarkshire
<b>PROJECT TITLE/SITE NAME:</b>	Thirstone Quarry Phase 2
<b>PROJECT CODE:</b>	RA11023
<b>PARISH:</b>	Crawfordjohn
<b>NAME OF CONTRIBUTOR:</b>	Liam McKinstry
<b>NAME OF ORGANISATION:</b>	Rathmell Archaeology Limited
<b>TYPE(S) OF PROJECT:</b>	Evaluation
<b>NMRS NO(S):</b>	-
<b>SITE/MONUMENT TYPE(S):</b>	-
<b>SIGNIFICANT FINDS:</b>	None
<b>NGR</b> (2 letters, 8 or 10 figures)	NS 8980 2724
<b>START DATE</b> (this season)	28 <sup>th</sup> September 2015
<b>END DATE</b> (this season)	1 <sup>st</sup> October 2015
<b>PREVIOUS WORK</b> (incl. <i>DES</i> ref.)	None
<b>MAIN (NARRATIVE) DESCRIPTION:</b> (may include information from other fields)	<p>A programme of archaeological works was required by Loudounhill Contracts Ltd in respect to the proposed extraction of 7.2ha within Phase 2 of consented development at Thirstone Sand and Gravel Quarry, Abington, South Lanarkshire. The archaeological works were designed to deliver the appropriate archaeological mitigation to facilitate the development.</p> <p>No significant archaeological remains or artefacts were uncovered from the excavated trenches.</p>
<b>PROPOSED FUTURE WORK:</b>	None
<b>CAPTION(S) FOR ILLUSTRS:</b>	None
<b>SPONSOR OR FUNDING BODY:</b>	Loudoun Hill Contracts Ltd
<b>ADDRESS OF MAIN CONTRIBUTOR:</b>	Unit 8 Ashgrove Workshops, Kilwinning, Ayrshire KA13 6PU
<b>E MAIL:</b>	contact@rathmell-arch.co.uk
<b>ARCHIVE LOCATION</b> (intended/deposited)	Report to West of Scotland Archaeology Service and archive to HES Collections

## Contact Details

Rathmell Archaeology can be contacted at our Registered Office or through the web:

Rathmell Archaeology Ltd  
Unit 8 Ashgrove Workshops  
Kilwinning  
Ayrshire  
KA13 6PU

[www.rathmell-arch.co.uk](http://www.rathmell-arch.co.uk)

t.: 01294 542848

f.: 01294 542849

e.: [contact@rathmell-arch.co.uk](mailto:contact@rathmell-arch.co.uk)

End of Document