

**Prettsmill Quarry, Sandilands,  
South Lanarkshire:  
Archaeological Mitigation**

Data Structure Report



by Douglas Gordon


issued 11<sup>th</sup> November 2015

on behalf of Surface Investments Ltd


**RATHMELL**   
ARCHAEOLOGY LTD

## Quality Assurance

This report covers works which have been undertaken in keeping with the issued brief as modified by the agreed programme of works. The report has been prepared in keeping with the guidance of Rathmell Archaeology Limited on the preparation of reports. All works reported on within this document have been undertaken in keeping with the Chartered Institute for Archaeologists' Standards and Policy Statements and Code of Conduct.

Signed .....  ..... Date ...11<sup>th</sup> November 2015.....

In keeping with the procedure of Rathmell Archaeology Limited this document and its findings have been reviewed and agreed by an appropriate colleague:

Checked .....  ..... Date ...11<sup>th</sup> November 2015.....

Copyright Rathmell Archaeology Limited. All rights reserved.

No part of this report may be copied or reproduced by any means without prior written permission from Rathmell Archaeology Limited. If you have received this report in error, please destroy all copies in your possession or control and notify Rathmell Archaeology Limited.

This report has been prepared for the exclusive use of the commissioning party and unless otherwise agreed in writing by Rathmell Archaeology Limited, no other party may use, make use of or rely on the contents of the report. No liability is accepted by Rathmell Archaeology Limited for any use of this report, other than the purposes for which it was originally prepared and provided.

Opinions and information provided in the report are on the basis of Rathmell Archaeology Limited using due skill, care and diligence in preparation of the same and no explicit warranty is provided as to their accuracy. It should be noted and it is expressly stated that no independent verification of any of the documents or information supplied to Rathmell Archaeology Limited has been made.

## Quality Assurance Data

Author(s)	Douglas Gordon		
Date of Issue	11 <sup>th</sup> November 2015	Version	1.0
Commissioning Body	Surface Investments Ltd		
Event Name	Prettsmill Quarry		
Event Type	Evaluation		
Event Date(s)	October 2015 - November 2015		
Rathmell Archaeology Code	RA15083	OASIS Ref	rathmell1-228798
Location	United Kingdom : Scotland : Renfrewshire		
NGR	NS 9019 3968	Parish	Carmichael
Designation(s)	None		
Canmore IDs	None		

## Contents

<b>Introduction .....</b>	<b>4</b>
<b>Historical and Archaeological Background .....</b>	<b>4</b>
<b>Project Works .....</b>	<b>7</b>
<b>Findings.....</b>	<b>7</b>
Conventions.....	11
Natural Sediment .....	11
Feature Groups .....	11
Finds.....	14
<b>Discussion .....</b>	<b>14</b>
<b>Recommendations .....</b>	<b>14</b>
<b>Conclusion .....</b>	<b>16</b>
<b>References .....</b>	<b>17</b>
Documentary .....	17
Cartographic.....	17
<b>Appendix 1: Trench Details &amp; Test Pits .....</b>	<b>18</b>
Trench Summary .....	18
Test Pits .....	28
<b>Appendix 2: Registers.....</b>	<b>29</b>
Context Register.....	29
Finds Register .....	30
Samples Register.....	31
Drawing Register .....	31
Photographic Register .....	34
<b>Appendix 3: Discovery &amp; Excavation in Scotland .....</b>	<b>38</b>
<b>Contact Details .....</b>	<b>39</b>

## Figures

Figure 1a: Roy's <i>Military Survey of Scotland</i> (1752-55).....	5
Figure 1b: Forrest's <i>The County of Lanark</i> (1816).....	5
Figure 2a: 6-inch 1 <sup>st</sup> edition Ordnance Survey (1864) .....	6
Figure 2b: 6-inch 2nd edition Ordnance Survey (1898).....	6
Figure 3: Trench Plan with unexcavated trenches marked in orange .....	8
Figure 4: Plan of Test Pits.....	9
Figure 5: Plan of Features .....	10
Figure 6a: Trench 1 from the North.....	12
Figure 6b: Trench 19 from the West Northwest.....	12
Figure 7a: Feature [012] from the Southwest .....	13
Figure 7b: Feature [018] from the Southwest .....	13
Figure 8a: Plan of Quarry Phase 3 with proposed archaeologically monitored area marked in red .....	15
Figure 8b: Plan of Quarry Phase 4 with proposed archaeologically monitored area marked in red .....	15

## Introduction

1. This Data Structure Report has been prepared for Dalgleish Associates on behalf of Surface Investments Ltd in respect to the development of a quarry for sand extraction and the formation of access at Prettsmill Farm, South Lanarkshire. The archaeological works were designed to determine the archaeological potential of the development area and hence inform the specification for mitigation of the impact on the archaeological remains within the development area.
2. South Lanarkshire Council required a programme of archaeological works to be undertaken as a requirement of the issued planning consent (Planning ref: (CL/15/0151). The West of Scotland Archaeology Service (WoSAS) who advise South Lanarkshire Council on archaeological matters provided guidance on the structure of archaeological works required on site in advance of extraction works.
3. Rathmell Archaeology Limited were appointed by Surface Investments Ltd to undertake the implementation of archaeological investigative works prior to the development of the site. The project works were specified in the Written Scheme of Investigation (Klemen 2015), which was agreed with the West of Scotland Archaeology Service.
4. This report details the findings from the intrusive evaluation undertaken within the development area in keeping with the Written Scheme of Investigation.

## Historical and Archaeological Background

5. William Roy's *Military Survey of Scotland* (1752-55) (Figure 1a) depicts Prettsmill to the north of the proposed development area and the southeast course of the River Clyde to where it bends and heads in a northwest direction. Roy also depicts the NNE-SSW course of a road/track that joins the steading at Crookboat in the southwest to Prettsmill in the northeast. Located roughly within the proposed development is an enclosed steading of two structures and labelled 'Nether house'. Located to the south of 'Nether house' is a square enclosure with a further area of enclosure directly on the east side. Both these sites may be located within the proposed development area, however due to inaccuracies within the original survey they may exist outside (see below).
6. The survey by Charles Ross *A Map of the Shire of Lanark* (1773) (not shown) does not depict the area of 'Nether house' or the square enclosure. Prettsmill, (spelt Pratsmill) is still depicted to the north of the proposed development area as is the road/track that Roy (1775-52) depicts. With the survey by William Forrest (1816) (Figure 1b) the road/track continues to be depicted and the spelling of Prettsmill has changed back from 'Pratsmill'. In addition, what Roy (1752-55) shows as two structures labelled 'Nether house', Forrest depicts as three structures known as 'Nether Houses'; these he locates away from the proposed development, to the north of the 'Side Burn'.
7. With John Ainslie's *Map of Southern part of Scotland: left side* (1821) (not shown) there is the continuation in depicting Prettsmill, with the spelling reverted back to 'Pratsmill'; 'Netherhouse' is not depicted.
8. The *6-inch 1<sup>st</sup> edition Ordnance Survey* (1894) (Figure 2a) provides the first detailed survey of the layout of the proposed development area as a large open field with a road bordering it to the east and the north-south route of the Caledonian Railway (Carstairs, Lanark & Douglas branch line) located to the west with the River Clyde running parallel to the railway line. The three structures of 'Netherhouses' are depicted in the same location as that of Forrest's (1816) survey and all three are roofed. Prettsmill is labelled as a corn and flour mill. The only change in the *6-inch 2<sup>nd</sup> edition Ordnance Survey* is the field of the proposed development area has been divided into two square fields.
9. Within the immediate area of the proposed development there are no known or recorded archaeological features. Within the surrounding area there are structural features such as Prettsmill (WoSAS pin: 19260, Canmore ID: 94894) and Netherhouses (WoSAS pin: 51421) that are recorded on HER records.



Figure 1a: Roy's *Military Survey of Scotland* (1752-55)

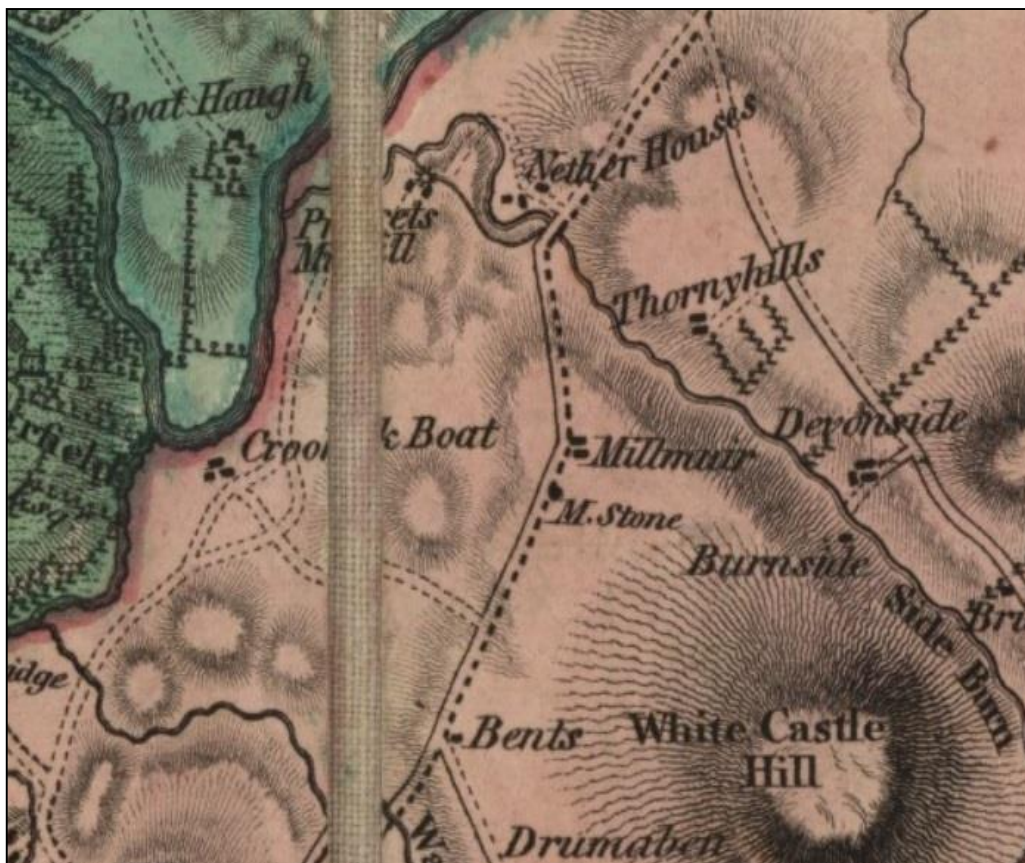


Figure 1b: Forrest's *The County of Lanark* (1816)

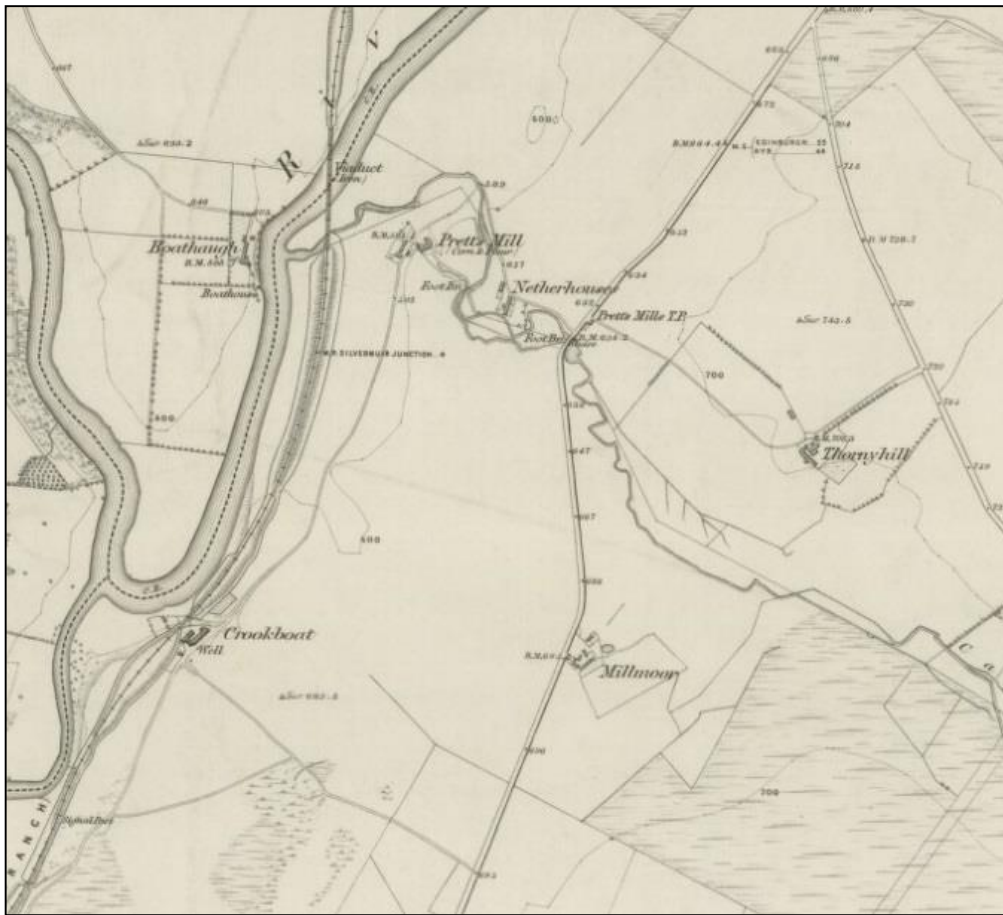


Figure 2a: 6-inch 1<sup>st</sup> edition Ordnance Survey (1864)

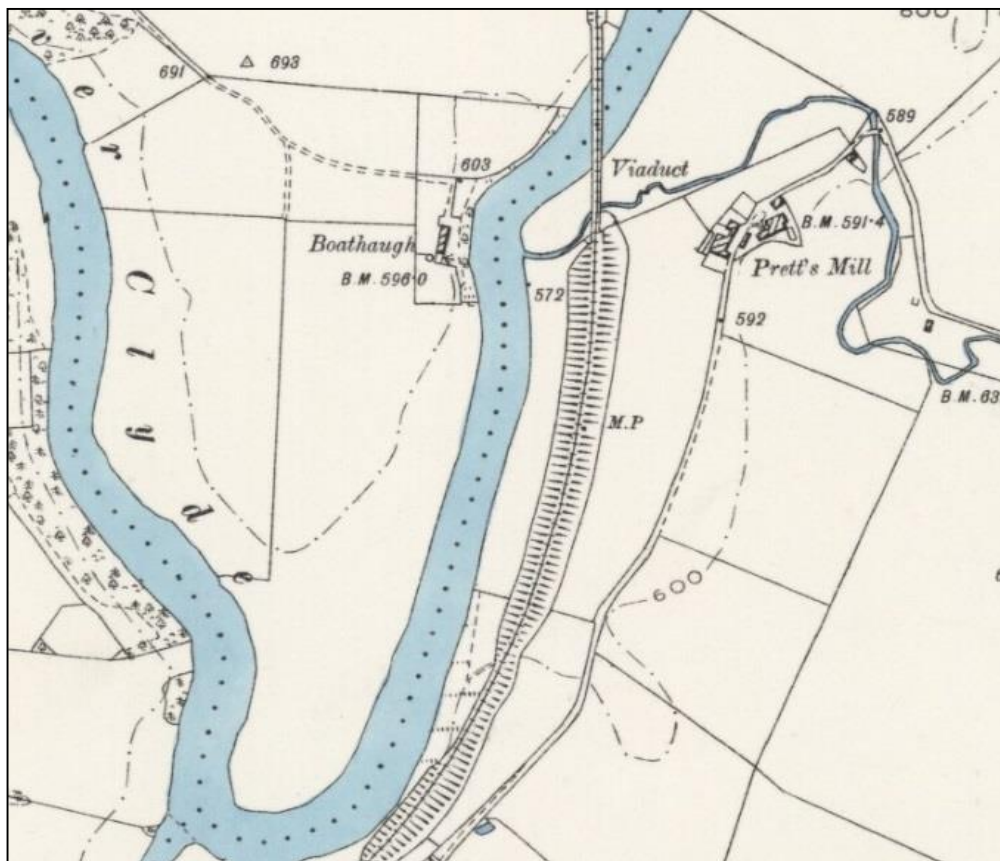


Figure 2b: 6-inch 2nd edition Ordnance Survey (1898)

10. During evaluation works for the proposed road linking the M8 during the mid-90s (Dunwell & Strachan 1995) an area of rig & furrow (WoSAS Pin: 40866, Canmore ID: 134172) was recorded to the northeast of the proposed development area and possibly linked to that depicted by Roy (1772-55) (Figure 1a). The set of evaluation works associated with the road works also recorded a number of cropmark features on the west side of the River Clyde (WoSAS Pin; 10225, Canmore ID: 46601) and to the southeast of the proposed development area (WoSAS Pin: 40926 & 40928, Canmore ID: 133633 & 133630). These features may well indicate areas of post medieval rig & furrow or earlier prehistoric features.

## Project Works

11. This archaeological evaluation, which was undertaken between the 13<sup>th</sup> October and the 3<sup>rd</sup> November 2015, was carried out in keeping with the methods detailed in the Written Scheme of Investigation (Klemen 2015) and the supporting Safety Plan & Risk Assessment (SPRAS) (Klemen 2015). It consisted of the excavation of a series of intrusive trenches to expose an 8% sample of the initial phase of the development area (a minimum sample of 5800m<sup>2</sup>) to be archaeologically examined. Due to the severe incline of the ground in portions of the site, it was agreed with WoSAS that it would not be necessary to trench those areas, as in addition to being dangerous for the machine to excavate, it was also highly unlikely that they would have any archaeology present. As such the minimum sample was reduced to 5040m<sup>2</sup>. In total, 5079m<sup>2</sup> of trenching of the available land was excavated, slightly exceeding the required 8% sample. The trenches not excavated were Trenches 25, 26, 56, and 57. Trench 24 was moved to lie on the flat at the top of the slope and Trench 55 was moved onto the flat but at a much reduced length. In addition the positions of Trenches 16 and 17 were adjusted to make it safer to excavate. Trenches 41, 42, 43 and 44, located at the top of a slope were also excavated at a much reduced length. The position of the trenches as machined is shown on the site plan (Figure 3).
12. In addition to the evaluation trenches six test pits were monitored at the entrance of the access road off of the A70.
13. The site consisted of pasture: though livestock were present across the site (sheep), their presence did not interfere with the on-site works. During the archaeological works the weather in general was dry.
14. All works were conducted in accordance with the West of Scotland Archaeology Service Standard Conditions, the Chartered Institute for Archaeologists' Standards and Policy Statements and Code of Conduct and Historic Scotland Policy Statements.

## Findings

15. In total, 54 evaluation trenches were excavated across the available portion of the development area, using a tracked 360° mechanical excavator with a toothless 2m ditching bucket.
16. All putative features identified within the bed of each trench were investigated in accordance with the SPRA and WSI with many consequently being discounted as products of bioturbation or geological anomalies rather than anthropic features. It should be noted that the whole of the site exhibited a lot of bioturbation, particularly from moles who were demonstrably active on site. Those features which were determined to be anthropic in origin are described below.
17. The monitored test pits were between 1.6-2m wide and 0.6-1m in depth. No archaeological features were revealed.
18. A standardised description of each trench is contained within the *Appendix 1: Trench Summaries* at the rear of this report; all trenches are also depicted on Figure 3. *Appendix 2* contains the registers for context description, photography, drawing, sampling and finds from the project.



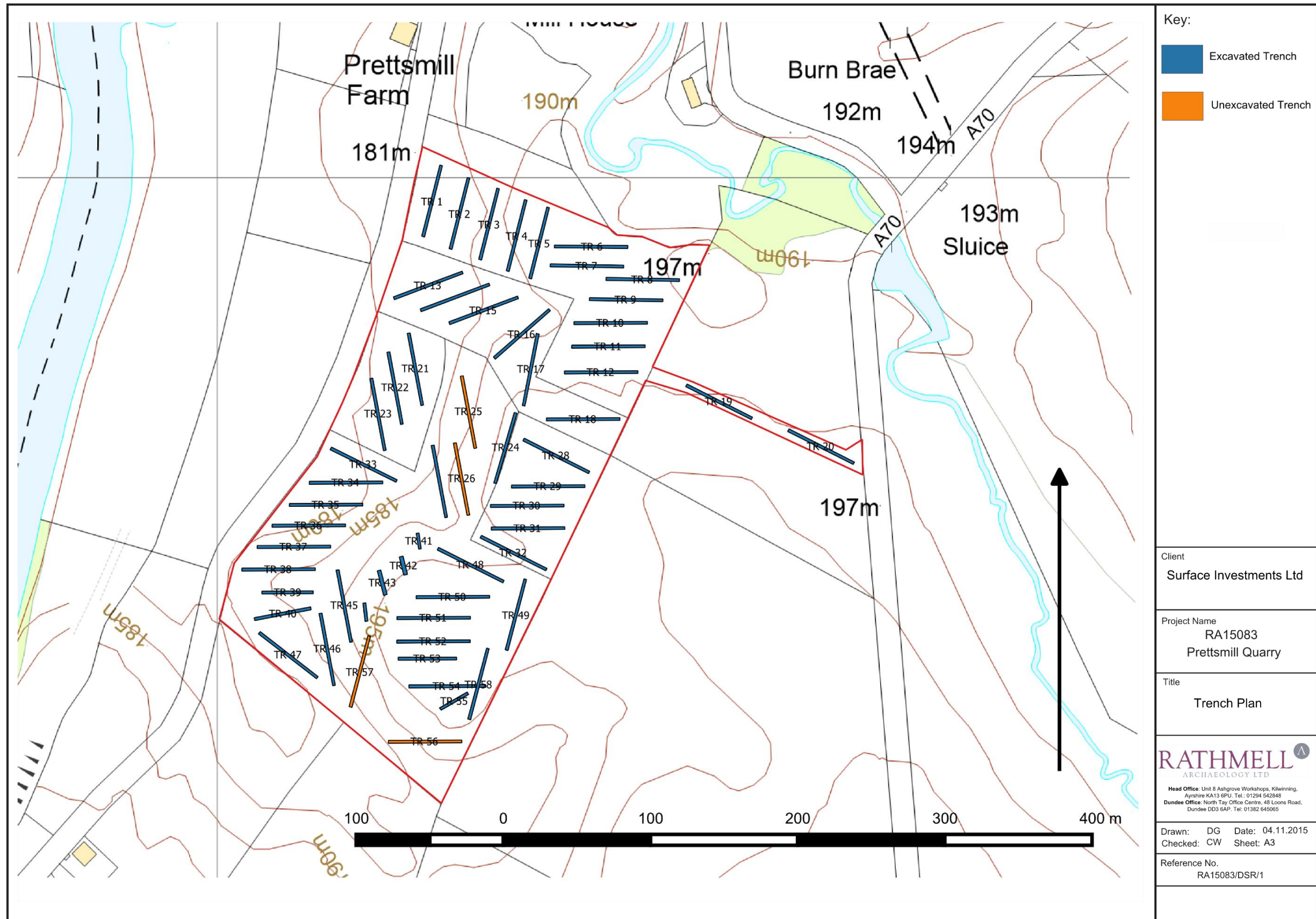


Figure 3: Trench Plan with unexcavated trenches marked in orange

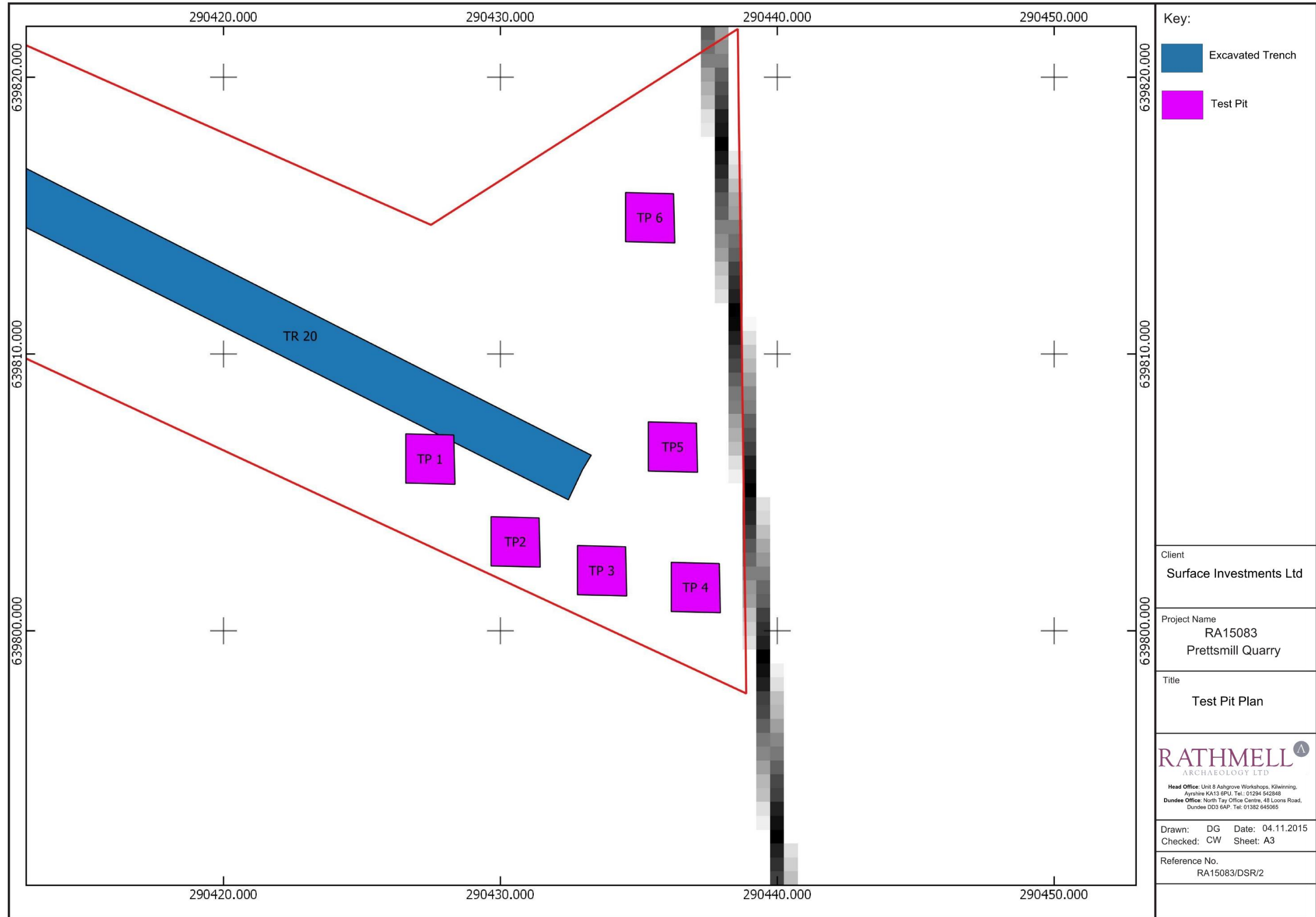


Figure 4: Plan of Test Pits

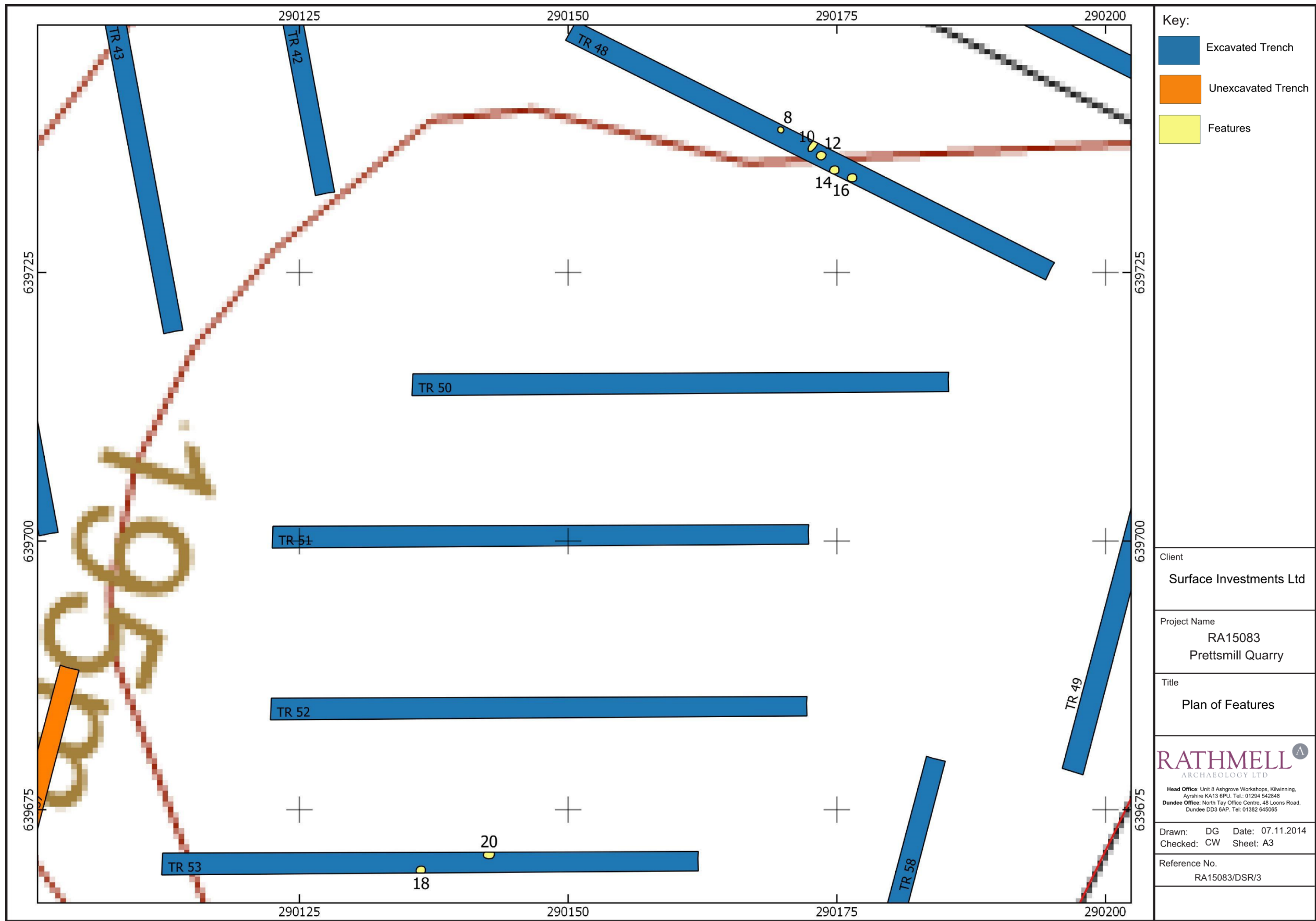


Figure 5: Plan of Features

### *Conventions*

19. Where significant features are discussed their location will normally be quoted as a distance along the relevant trench (such as +23m). This distance was measured from the end of the trench quoted first for the orientation of the trench in the *Trench Summaries* in Appendix 1.
20. All depths given for features are given from the base of the trench after the removal of topsoil and/or modern overburden unless otherwise stated. The reader should presume a homogenised topsoil was present in all trenches over the upper surface of the drift geology unless an alternative description is provided. Where a number of cut features were identified in close proximity, they have been described together as Feature Groups – while this may reflect an association between them, at the current time the only definite association is physical proximity.
21. The context is the basic archaeological unit of description relating to either a structure, cut or sediment of common characteristics. Structures (such as walls or built surfaces) and cut features (normally identified as they cut the underlying subsoil) are denoted by squared brackets (e.g. [040]). Sediments, including the fills of cut features, are denoted by rounded brackets (e.g. (041)).
22. When discussing features which are broadly circular in plan, our general approach is to consider those features over 500mm in diameter to be pits while those under 500mm are postholes. The difference in size is an indication only of a possible function; a posthole requires to be large enough to hold a post and associated stone packing. While a pit, which is larger, may have been dug, for example, to extract sand & gravel, to create an obstacle or for the purpose of rubbish disposal. Where clear evidence of function is present, such as packing stones, post-pipes and ramps, then such features will be described by inferred function regardless of size.

### *Natural Sediment*

23. The topsoil (001) consisted of dark brown silty sand across the site. In general the topsoil was about 300mm in depth although it could be up to 900mm deep in places. The subsoil revealed six variants: the first, (002), was an orange sand, while the second, (003), was an orange brown sand (containing stones). The third, (004), was a pale, bleached sand (also containing stones); (005) was an orange sand with clasts of clay; (006) was a pale orange/yellow gravel with a sand matrix. The last subsoil variation was grey (mottled orange) sandy clay.

### *Feature Groups*

24. Two groups of features were revealed during the excavation of Trenches 48 and 53. Within Trench 48 five features [008], [010], [012], [014] and [016] were revealed at +21.6m, +24.4m, +25.9m, +27.7m and +29.7m respectively. Feature [008] was oval in plan, measuring 500mm by 320mm and up to 300mm in depth, with sides varying from gently sloping to steeply sloping. The east side of the feature appears to have been cut by animal burrow. The fill of [008] was a dark brown silty sand with rare small stone inclusions (009). Feature [010] sub-circular in plan measuring up to 1m in diameter and 450mm in depth with sloping sides (moderate to steep inclination). The base of the feature contained a rounded cut measuring 0.3m in diameter as visible, which can be interpreted as either the remains of a small post-hole, or a small burrow. The fill of [010] was (011), which was dark brown silty sand with rare small stone inclusions. Feature [012] was oval in plan, measuring 800mm by 500mm and up to 400mm in depth, with steep sides and a pointed base; its fill (013) was a dark brown silty sand with rare small stone inclusions. Feature [014] was sub circular in plan within the trench; the south-east side was obscured by limits of excavation of the trench. As visible, the feature measured up to 1m in diameter, and the fill (015) was again, dark brown silty sand with rare small stone inclusions. The last feature within Trench 48 was [016]; this was circular in plan, measuring 900mm in diameter, with a dark brown silty sand with rare small stone inclusions (017).



Figure 6a: Trench 1 from the North



Figure 6b: Trench 19 from the West Northwest



Figure 7a: Feature [012] from the Southwest



Figure 7b: Feature [018] from the Southwest

25. The second group of features found in Trench 53 consisted of only two features, [018] at +24.4m and [020] at +30.5m. Feature [018] was circular in plan measuring 900mm in diameter and up to 390mm in depth with steeply sloping sides and a nearly flat base. Its fill (019) was a mid orange brown, slightly silty sand with occasional small to medium sub-angular and sub-rounded stones, occasional charcoal inclusions and occasional burnt bone flecks. Feature [020] was oval in plan, measuring 1.37m by 900mm with a mid to dark brown silty sand fill (021), which also contained rare charcoal and burnt bone inclusions.

### *Finds*

26. The finds assemblage was limited in quantity. One body sherd from a thick-walled ceramic vessel was recovered (<010> from context (019): this sherd is likely to date from the Bronze Age, and may have derived from a large urn-type vessel.
27. The other find of note was a small button or thumbnail-type scraper of flint. Recovered from the topsoil, and therefore not derived from any particular feature, this form of lithic object is characteristic of the Bronze Age.
28. Both items suggest a potential for Bronze Age occupation and land use, a possibility further strengthened by finds of small quantity of burnt bone (Find Nos. <06> and <07>).

### Discussion

29. In general, little activity was revealed across the site; even modern activity was limited, evidenced only as rare finds of modern pottery across the site. What was revealed consisted of two groups of features in the southeast of the study area. The first group within Trench 48, consisted of five features, which based on dimensions appear to be pits. The identical fill of these features would suggest they were contemporary with one another. While their exact age is uncertain, their form and nature are indicative of a prehistoric origin. Unfortunately, no artefacts or datable material were recovered that may indicate their age or function. As such any speculation as to their age is purely that.
30. In contrast, Pit [018] within Trench 58 can provisional be dated to the Bronze Age, as the pottery <010> recovered from it appears to be of such a date. Based on dimensions, feature [020] also appears to be a pit. While there is little to give any indication as to what the function of these two features was, the presence of burnt bone, in addition to the pottery, may indicate they were rubbish pits.
31. Taken in conjunction with the flint button scraper <004> found in the north western portion of the study area, the presence of the features would seem to indicate generalised activity occurring during the Bronze Age (2200-800BC). How extensive this activity was is not discernible from the information recovered from the evaluation and may require further works.

### Recommendations

32. As those features which were uncovered fall wholly within Phase 4 of the quarry, Rathmell Archaeology Ltd recommend that no further works should be carried out against the other quarry phases.
33. However, the quality and quantity of the archaeological features uncovered within Phase 4 – comprising seven features, of which one produced finds of prehistoric ceramic (provisionally dated to the Bronze Age) - should warrant further works being carried out prior to the commencement of works in Phase 4 by the quarry.
34. Given the low density of these features it is possible for there to be other low density clusters of features present between the evaluation trenches in this area. As these features are situated on the flat area at the top of a rise, Rathmell Archaeology Ltd recommend an archaeologically led topsoil strip be carried out on this area within Phase 4, as show in Figures 8a and b. These works are to be carried out prior to the commencement of works in Phase 4.
35. The acceptability of these works needs to be confirmed with WoSAS and South Lanarkshire Council.

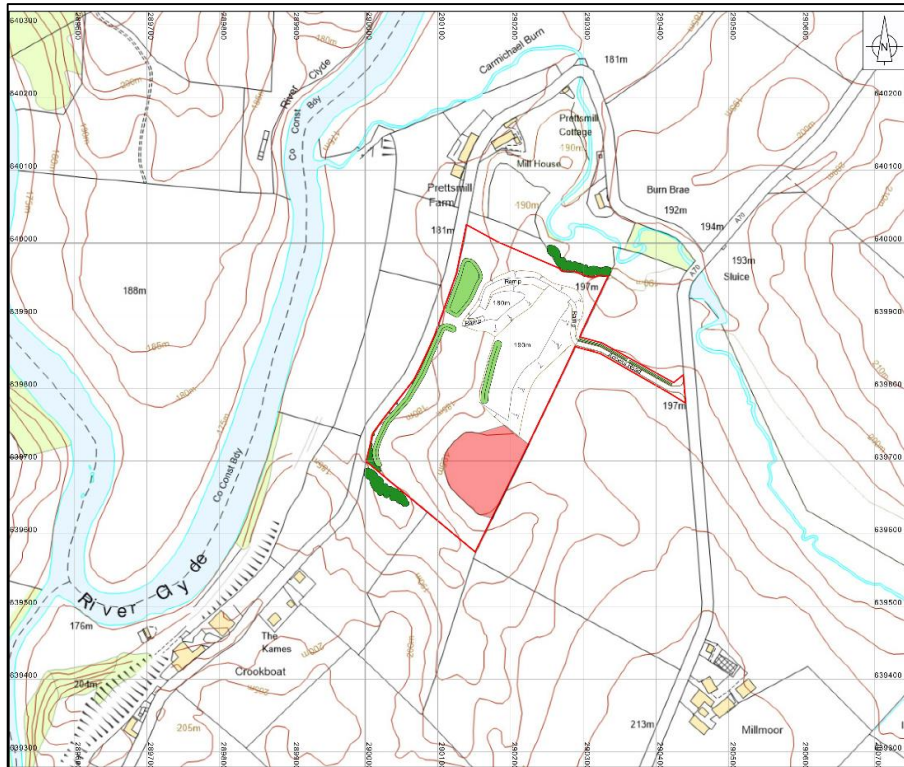


Figure 8a: Plan of Quarry Phase 3 with proposed archaeologically monitored area marked in red

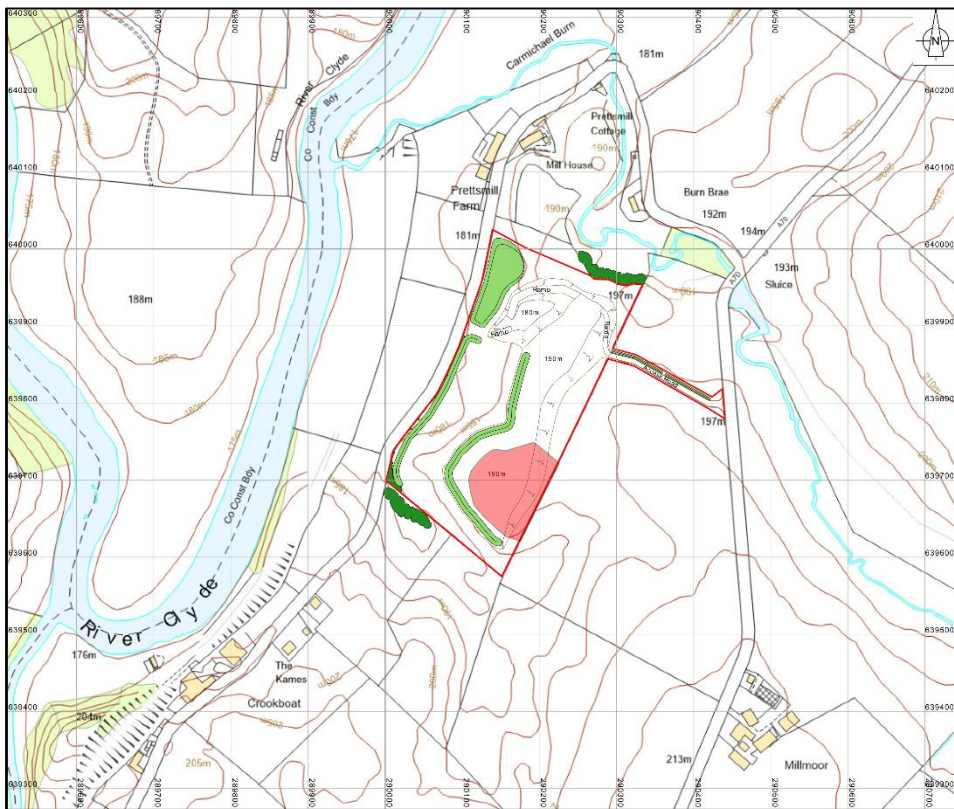


Figure 8b: Plan of Quarry Phase 4 with proposed archaeologically monitored area marked in red



## Conclusion

36. A programme of archaeological investigative works was carried out for Surface Investments Ltd in respect to the development of a quarry for sand extraction and the formation of access at Prettsmill Farm, South Lanarkshire. (11/00776/PP). The archaeological works were designed to determine the archaeological potential of the development area and hence inform the specification for mitigation of the impact on the archaeological remains within the development area.
37. The archaeological investigative works consisted of an intrusive evaluation which was designed to assess an 8% sample of the proposed development area. The works were carried out between 13<sup>th</sup> October and the 3<sup>rd</sup> November 2015, with a total of 54 trenches excavated. The works identified two concentrations of significant archaeological features comprising seven roughly circular pits located in close proximity to one another in two separate trenches. The pottery and flint artefacts recovered appear to be indicative of a Bronze Age date

## References

### *Documentary*

Dunwell and Strachan, A J and R J. 1995. 'M6/M8 Fastlink: Hybrid Survey (Avoidance Phase) (Carnwath, Carstairs, Lanark, Carmichael, Pettinain, Douglas & Lesmahagow parishes), evaluation'. *Discovery and Excavation, Scotland* pp.83-86

HM Government, 1997, *Planning (Listed Buildings and Conservation Areas) (Scotland) Act, HMSO*

Historic Scotland, 2008, *Scottish Historic Environment Policy*

Museum of London, 1994, *Archaeological Site Manual*

Museums and Galleries Commission, 1992, *Standards in the Museum Care of Archaeological Collections*

Scottish Government, 2008, *Treasure Trove in Scotland: A code of Practice*

Scottish Government, 2010, *Scottish Planning Policy*

Scottish Government, 2011, *Planning Advice Note 2/2011: Planning & Archaeology*

Watkinson & Neal, 1998, *First Aid for Finds*

### *Cartographic*

Ainslie, J., 1821, Map of the Southern Part of Scotland

Forrest, W., 1816, The County of Lanark

Ross, C., 1773, A Map of the Shire of Lanark

Roy, W., 1752-55, Military survey of Scotland

Ordnance Survey, 1864, 1<sup>st</sup> edition map sheet XXXII

Ordnance Survey, 1898, 1<sup>nd</sup> edition map sheet XXXII.NE

## Appendix 1: Trench Details & Test Pits

Within this appendix a standardised set of data pertaining to the evaluation trenches is presented.

All measurement distances quoted along the trench measure based on the quoted orientation of the trench.

### *Trench Summary*

<b>Trench</b>	<b>Orientation</b>	<b>Size</b>	<b>Topsoil Depth</b>	<b>Subsoil Character</b>	<b>Modern/ Agricultural Features</b>	<b>Significant Features</b>	<b>Artefacts</b>
1	S-N	2m by 51m  102m <sup>2</sup>	400-800mm	Orange Sand (002).	None	None	None
2	S-N	2m by 51.5m  103m <sup>2</sup>	550-600mm	Orange Sand (002). Orange brown sand with frequent small to medium sized sub-rounded stones (003).	None	None	1 x modern pottery (Find No. 1)
3	S-N	2m by 50m  100m <sup>2</sup>	550-600mm	Orange brown sand with frequent small to medium sized sub-rounded stones (003). Pale/orange bleached sand with very small sub-rounded stones and coal (004).	None	None	2 x modern pottery (Find No. 2)
4	S-N	2m by 51.8m  103.6m <sup>2</sup>	350-400mm	Orange Sand (002). Orange brown sand with frequent small to medium sized sub-rounded stones (003). Pale/orange bleached sand with very small sub-rounded stones and coal (004).	Site investigation pit	None	1 x modern pottery (Find No. 3)
5	NNE-SSW	2m by 50.6m  101.2m <sup>2</sup>	260-360mm	Pale/orange bleached sand with very small sub-rounded stones and coal (004).	None	None	None

Trench	Orientation	Size	Topsoil Depth	Subsoil Character	Modern/ Agricultural Features	Significant Features	Artefacts
6	W-E	2m by 51.6m  103.2m <sup>2</sup>	300-370mm	Orange brown sand with frequent small to medium sized sub-rounded stones (003). Pale/orange bleached sand with very small sub-rounded stones and coal (004).	None	None	None
7	E-W	2m by 50m  100m <sup>2</sup>	270-350mm	Orange brown sand with frequent small to medium sized sub-rounded stones (003). Pale/orange bleached sand with very small sub-rounded stones and coal (004).	None	None	None
8	W-E	2m by 50.1m  100.2m <sup>2</sup>	300-350mm	Orange brown sand with frequent small to medium sized sub-rounded stones (003). Pale/orange bleached sand with very small sub-rounded stones and coal (004).	None	None	None
9	W-E	2m by 50.5m  101m <sup>2</sup>	330-400mm	Orange brown sand with frequent small to medium sized sub-rounded stones (003).	None	None	None
10	E-W	2m by 50.3m  100.6m <sup>2</sup>	230-400mm	Orange brown sand with frequent small to medium sized sub-rounded stones (003).	None	None	None
11	W-E	2m by 50.1m  100.2m <sup>2</sup>	300-450mm	Orange Sand (002). Orange brown sand with frequent small to medium sized sub-rounded stones (003). Pale/orange bleached sand with very small sub-rounded stones and coal (004).	None	None	None

Trench	Orientation	Size	Topsoil Depth	Subsoil Character	Modern/ Agricultural Features	Significant Features	Artefacts
12	W-E	2m by 51.8m  103.6m <sup>2</sup>	290-300mm	Orange brown sand with frequent small to medium sized sub-rounded stones (003). Pale/orange bleached sand with very small sub-rounded stones and coal (004).	None	None	None
13	W-E	2m by 54.1m  108.2m <sup>2</sup>	250-600mm	Orange Sand (002). Orange brown sand with frequent small to medium sized sub-rounded stones (003).	None	None	None
14	E-W	2m by 52.9m  105.8m <sup>2</sup>	260-700mm	Orange Sand (002). Pale/orange bleached sand with very small sub-rounded stones and coal (004).	None	None	None
15	E-W	2m by 50.7m  101.4m <sup>2</sup>	250-460mm	Orange Sand (002). Pale/orange bleached sand with very small sub-rounded stones and coal (004).	None	None	None
16	SW-NE	2m by 50.5m  101m <sup>2</sup>	150-900mm	Orange brown sand with frequent small to medium sized sub-rounded stones (003).	None	None	1 x button scraper (Find No. 4)
17	N-S	2m by 51.5m  103m <sup>2</sup>	260-340mm	Orange brown sand with frequent small to medium sized sub-rounded stones (003). Pale/orange bleached sand with very small sub-rounded stones and coal (004).	None	None	None

Trench	Orientation	Size	Topsoil Depth	Subsoil Character	Modern/ Agricultural Features	Significant Features	Artefacts
18	E-W	2m by 53.1m  106.2m <sup>2</sup>	300-570mm	Orange Sand (002). Orange brown sand with frequent small to medium sized sub-rounded stones (003).	None	None	None
19	WNW-ESE	2m by 50.3m  100.6m <sup>2</sup>	300-380mm	Orange Sand (002).	None	None	None
20	WNW-ESE	2m by 52.9m  103.8m <sup>2</sup>	240-400mm	Orange Sand (002). Pale/orange bleached sand with very small sub-rounded stones and coal (004).	None	None	None
21	N-S	2m by 51.5m  103m <sup>2</sup>	350mm	Orange Sand (002). Pale/orange bleached sand with very small sub-rounded stones and coal (004).	None	None	None
22	N-S	2m by 54.3m  108.6m <sup>2</sup>	280-500mm	Orange Sand (002). Pale/orange bleached sand with very small sub-rounded stones and coal (004). Orange Sand with clasts of grey clay (005).	None	None	None
23	S-N	2m by 53m  106m <sup>2</sup>	300-400mm	Pale/orange bleached sand with very small sub-rounded stones and coal (004).	None	None	None

Trench	Orientation	Size	Topsoil Depth	Subsoil Character	Modern/ Agricultural Features	Significant Features	Artefacts
24	NE-SW	2m by 53.2m  106.4m <sup>2</sup>	250-300mm	Orange Sand (002). Pale orange/yellow small to medium sized stones in a sand matrix (006).	None	None	None
25				Not Excavated			
26				Not Excavated			
27	S-N	2m by 58.2m  116.2m <sup>2</sup>	570-1190mm	Orange Sand (002). Grey mottled orange sandy clay (007).	None	None	None
28	SE-NW	2m by 51.3m  102.6m <sup>2</sup>	250-300mm	Orange Sand (002). Orange brown sand with frequent small to medium sized sub-rounded stones (003).	None	None	None
29	W-E	2m by 51.8m  103.6m <sup>2</sup>	300mm	Pale/orange bleached sand with very small sub-rounded stones and coal (004).	None	None	None
30	W-E	2m by 50.8m  101.6m <sup>2</sup>	300-340mm	Pale/orange bleached sand with very small sub-rounded stones and coal (004).	None	None	None

Trench	Orientation	Size	Topsoil Depth	Subsoil Character	Modern/ Agricultural Features	Significant Features	Artefacts
31	W-E	2m by 50.3m  100.6m <sup>2</sup>	300-350mm	Orange brown sand with frequent small to medium sized sub-rounded stones (003).	None	None	None
32	W-E	2m by 53.2m  106.4m <sup>2</sup>	300-550mm	Pale/orange bleached sand with very small sub-rounded stones and coal (004).	None	None	None
33	ESE-WNW	2m by 50m  100m <sup>2</sup>	250-300mm	Orange Sand (002). Orange brown sand with frequent small to medium sized sub-rounded stones (003). Pale/orange bleached sand with very small sub-rounded stones and coal (004).	None	None	None
34	E-W	2m by 50m  100m <sup>2</sup>	400-900mm	Orange Sand (002).	None	None	None
35	E-W	2m by 53.5m  107m <sup>2</sup>	400-900mm	Orange Sand (002).	None	None	None
36	ESE-WNW	2m by 51.3m  107m <sup>2</sup>	700-1000mm	Orange Sand (002).	None	None	None



Trench	Orientation	Size	Topsoil Depth	Subsoil Character	Modern/ Agricultural Features	Significant Features	Artefacts
37	WNW-ESE	2m by 50.8m  101.6m <sup>2</sup>	700-1000mm	Orange Sand (002). Pale/orange bleached sand with very small sub-rounded stones and coal (004).	None	None	None
38	WNW-ESE	2m by 49.2m  98.4m <sup>2</sup>	300-500mm	Orange Sand (002). Pale/orange bleached sand with very small sub-rounded stones and coal (004). Pale orange/yellow small to medium sized stones in a sand matrix (006).	None	None	None
39	WNW-ESE	2m by 50m  100m <sup>2</sup>	300-500mm	Orange Sand (002). Pale orange/yellow small to medium sized stones in a sand matrix (006).	None	None	None
40	W-E	2m by 40.1m  80.2m <sup>2</sup>	280-1170mm	Orange Sand (002). Pale orange/yellow small to medium sized stones in a sand matrix (006).	None	None	None
41	S-N	2m by 8m  16m <sup>2</sup>	400-420mm	Pale/orange bleached sand with very small sub-rounded stones and coal (004).	None	None	None
42	SSE-NNW	2m by 11.4m  22.8m <sup>2</sup>	320-350mm	Pale/orange bleached sand with very small sub-rounded stones and coal (004).	None	None	None

Trench	Orientation	Size	Topsoil Depth	Subsoil Character	Modern/ Agricultural Features	Significant Features	Artefacts
43	SSE-NNW	2m by 15.4m  30.8m <sup>2</sup>	300-370mm	Orange Sand (002).	None	None	None
44	SSE-NNW	2m by 11.5m  23m <sup>2</sup>	300-450mm	Orange Sand (002).	None	None	None
45	SSE-NNW	2m by 50.5m  101m <sup>2</sup>	400-420mm	Orange Sand (002). Pale/orange bleached sand with very small sub-rounded stones and coal (004). Orange Sand with clasts of grey clay (005).	None	None	None
46	NNW-SSE	2m by 56.5m  113m <sup>2</sup>	500-510mm	Orange Sand (002). Pale/orange bleached sand with very small sub-rounded stones and coal (004). Orange Sand with clasts of grey clay (005).	None	None	None
47	NW-SE	2m by 51.8m  103.6m <sup>2</sup>	500-1000mm	Orange Sand (002). Pale/orange bleached sand with very small sub-rounded stones and coal (004).	None	None	None
48	NW-SE	2m by 50m  100m <sup>2</sup>	420-460mm	Pale/orange bleached sand with very small sub-rounded stones and coal (004).	None	Posthole [008]. Pits [010, 012, 014 and 016].	None

Trench	Orientation	Size	Topsoil Depth	Subsoil Character	Modern/ Agricultural Features	Significant Features	Artefacts
49	N-S	2m by 54.2m  108.4m <sup>2</sup>	340-480mm	Orange Sand (002). Pale/orange bleached sand with very small sub-rounded stones and coal (004).	None	None	None
50	WNW-ESE	2m by 51.1m  102.2m <sup>2</sup>	340-480mm	Pale orange/yellow small to medium sized stones in a sand matrix (006).	None	None	None
51	ESE-WNW	2m by 53.9m  107.8m <sup>2</sup>	410-500mm	Orange Sand (002).	None	None	None
52	WNW-ESE	2m by 54.1m  108.2m <sup>2</sup>	300-470mm	Orange Sand (002). Pale/orange bleached sand with very small sub-rounded stones and coal (004).	None	None	None
53	WNW-ESE	2m by 48m  96m <sup>2</sup>	350-540mm	Pale/orange bleached sand with very small sub-rounded stones and coal (004). Orange Sand with clasts of grey clay (005).	None	Pits [018 and 020]	Burnt bone (Find No. 6 and 7). 1 x flint (Find No. 8). 1 x worked stone (Find No. 9). Prehistoric pottery (Find No. 10)

Trench	Orientation	Size	Topsoil Depth	Subsoil Character	Modern/ Agricultural Features	Significant Features	Artefacts
54	WSW-ENE	2m by 50m  100m <sup>2</sup>	300-420mm	Pale/orange bleached sand with very small sub-rounded stones and coal (004).	None	None	None
55	W-E	2m by 20m  40m <sup>2</sup>	240-280mm	Pale/orange bleached sand with very small sub-rounded stones and coal (004).	None	None	None
56				Not Excavated			
57				Not Excavated			
58	SSW-NNE	2m by 55.8m  111.6m <sup>2</sup>	230-380mm	Pale/orange bleached sand with very small sub-rounded stones and coal (004).	None	None	None

*Test Pits*

<b>Trench</b>	<b>Orientation</b>	<b>Size</b>	<b>Topsoil Depth</b>	<b>Subsoil Character</b>	<b>Modern/ Agricultural Features</b>	<b>Significant Features</b>	<b>Artefacts</b>
TP1	N/A GPS Coords 90428 39791	2m by 2m  4m <sup>2</sup>	600- 1000mm	Orange Sand (002).	None	None	None
TP2	N/A GPS Coords 90435 39793	2m by 2m  4m <sup>2</sup>	600- 1000mm	Orange Sand (002).	None	None	None
TP3	N/A GPS Coords 90439 39793	2m by 2m  4m <sup>2</sup>	600- 1000mm	Orange Sand (002).	None	None	None
TP4	N/A GPS Coords 90441 39785	2m by 2m  4m <sup>2</sup>	600- 1000mm	Orange Sand (002).	None	None	None
TP5	N/A GPS Coords 90441 39801	2m by 2m  4m <sup>2</sup>	600- 1000mm	Orange Sand (002).	None	None	None
TP6	N/A GPS Coords 90440 39814	2m by 2m  4m <sup>2</sup>	600- 1000mm	Orange Sand (002).	None	None	None

## Appendix 2: Registers

Within this appendix are all registers pertaining to works on-site during the evaluation.

### Context Register

Context No.	Area/ Trench	Type	Description	Interpretation
001	All	Deposit	Dark brown silty sand with occasional small sub -rounded and sub-angular stones with rootlets through out	Ploughsoil
002		Deposit	Orange Sand	Subsoil
003		Deposit	Orange brown sand with frequent small to medium sized sub-rounded stones	Subsoil
004		Deposit	Pale/orange bleached sand with very small sub-rounded stones and coal	Subsoil
005		Deposit	Orange Sand with clasts of grey clay	Subsoil
006		Deposit	Pale orange/yellow small to medium sized stones in a sand matrix	Subsoil
007		Deposit	Grey mottled orange sandy clay	Subsoil
008		Cut	Oval feature in plan measuring 500mm by 320mm and up to 300mm with gently sloping to steeply sloping sides. East side possibly cut by animal burrow.	Cut of Pit
009		Fill	Dark brown silty sand with rare small stone inclusions	Fill of [009]
010		Cut	Sub-circular in plan measuring up to 1m in diameter and 450mm in depth with moderately sloping to steeply sloping sides. The base has a small rounded cut, measuring 0.3m diameter, which was either the remains of a post-hole, or an animal burrow.	Cut of Pit
011		Fill	Dark brown silty sand with rare small stone inclusions	Fill of [011]
012		Cut	Oval in plan measuring 800mm by 500mm and up to 400mm in depth with steep sides and a pointed base	Cut of Pit
013		Fill	Dark brown silty sand with rare small stone inclusions	Fill of [011]
014		Cut	Sub circular in plan within the trench, measuring up to 1m in diameter, feature extended out of the trench	Cut of Pit
015		Fill	Dark brown silty sand with rare small stone inclusions	Fill of [011]

Context No.	Area/ Trench	Type	Description	Interpretation
016		Cut	Circular in plan measuring 900mm in diameter, feature extended out of the trench	Cut of Pit
017		Fill	Dark brown silty sand with rare small stone inclusions	Fill of [011]
018		Cut	Circular in plan measuring 900mm in diameter and up to 390mm in depth with steeply sloping sides and a flattish base. feature extended out of the trench	Cut of Pit
019		Fill	Mid orange brown slightly silty sand with occasional small to medium sub-angular and sub-rounded stone and occasional charcoal inclusions	Fill of (018)
020		Cut	Oval in plan measuring 1.37m by 900mm	Cut of Pit
021		Fill	Mid -dark brown silty sand with rare charcoal and burnt bone inclusions	Fill of [020]

### *Finds Register*

Find No.	Area Trench	Context no.	Material Type	Description	Excavator	Date
001	2	US	Ceramic	Sherd of Modern Pottery x1	TR	13/10/15
002	3	US	Ceramic	Sherd of Modern Pottery x2	TR	13/10/15
003	4	US	Ceramic	Sherd of Modern Pottery x1	TR	13/10/15
004	16	001	Stone	Button Scrapper	DG	19/10/15
005	--	001	Ceramic	Modern Pottery Sherds	DiG	30/10/15
006	53	019	Bone	Burnt Bone	DiG	30/10/15
007	53	021	Bone	Burnt Bone	DiG	30/10/15
008	-	-	-	VOID	-	30/10/15
009	-	-	-	VOID	-	30/10/15
010	53	019	Ceramic	Prehistoric Pot	DiG	30/10/15

*Samples Register*

Sample No.	Area/ Trench	Context No	Sample Type	Description	Excavator	Date
001	48	009	Large x 1	Fill of [008]	DiG	29/10/15
002	48	013	Large x 1	Fill of [012]	DiG	29/10/15
003	48	011	Large x 1	Fill of [010]	DiG	29/10/15
004	53	019	Large x 1	[018]	DiG	30/10/15

*Drawing Register*

Drawing No.	Sheet No.	Area/ Trench	Drawing Type	Scale	Description
1	1	Tr.1	Plan	1:100	Post-excavation plan of trench 1
2	1	Tr.2	Plan	1:100	Post-excavation plan of trench 2
3	1	Tr.3	Plan	1:100	Post-excavation plan of trench 3
4	1	Tr.4	Plan	1:100	Post-excavation plan of trench 4
5	1	Tr.5	Plan	1:100	Post-excavation plan of trench 5
6	1	Tr.6	Plan	1:100	Post-excavation plan of trench 6
7	1	Tr.7	Plan	1:100	Post-excavation plan of trench 7
8	1	Tr.8	Plan	1:100	Post-excavation plan of trench 8
9	2	Tr.9	Plan	1:100	Post-excavation plan of trench 9
10	2	Tr.10	Plan	1:100	Post-excavation plan of trench 10
11	2	Tr.11	Plan	1:100	Post-excavation plan of trench 11
12	2	Tr.12	Plan	1:100	Post-excavation plan of trench 12
13	2	Tr.13	Plan	1:100	Post-excavation plan of trench 13



Drawing No.	Sheet No.	Area/ Trench	Drawing Type	Scale	Description
14	2	Tr.14	Plan	1:100	Post-excavation plan of trench 14
15	2	Tr.15	Plan	1:100	Post-excavation plan of trench 15
16	3	Tr.16	Plan	1:100	Post-excavation plan of trench 16
17	3	Tr.17	Plan	1:100	Post-excavation plan of trench 17
18	3	Tr.18	Plan	1:100	Post-excavation plan of trench 18
19	3	Tr.19	Plan	1:100	Post-excavation plan of trench 19
20	3	Tr.29	Plan	1:100	Post-excavation plan of trench 29
21	3	Tr.30	Plan	1:100	Post-excavation plan of trench 30
22	3	Tr.31	Plan	1:100	Post-excavation plan of trench 31
23	3	Tr.32	Plan	1:100	Post-excavation plan of trench 32
24	4	Tr.21	Plan	1:100	Post-excavation plan of trench 21
25	4	Tr.22	Plan	1:100	Post-excavation plan of trench 22
26	4	Tr.23	Plan	1:100	Post-excavation plan of trench 23
27	4	Tr.24	Plan	1:100	Post-excavation plan of trench 24
28	4	Tr.33	Plan	1:100	Post-excavation plan of trench 33
29	4	Tr.34	Plan	1:100	Post-excavation plan of trench 34
30	4	Tr.35	Plan	1:100	Post-excavation plan of trench 35
31	5	Tr.36	Plan	1:100	Post-excavation plan of trench 36
32	5	Tr.37	Plan	1:100	Post-excavation plan of trench 37
33	5	Tr.38	Plan	1:100	Post-excavation plan of trench 38
34	5	Tr.39	Plan	1:100	Post-excavation plan of trench 39
35	5	Tr.40	Plan	1:100	Post-excavation plan of trench 40
36	5	Tr.47	Plan	1:100	Post-excavation plan of trench 47

Drawing No.	Sheet No.	Area/ Trench	Drawing Type	Scale	Description
37	5	Tr.46	Plan	1:100	Post-excavation plan of trench 46
38	5	Tr.45	Plan	1:100	Post-excavation plan of trench 45
39	6	Tr.44	Plan	1:100	Post-excavation plan of trench
40	6	Tr.43	Plan	1:100	Post-excavation plan of trench
41	6	Tr.42	Plan	1:100	Post-excavation plan of trench
42	6	Tr.41	Plan	1:100	Post-excavation plan of trench
43	6	Tr.27	Plan	1:100	Post-excavation plan of trench
44	6	Tr.48	Plan	1:100	Post-excavation plan of trench
45	6	Tr.49	Plan	1:100	Post-excavation plan of trench
46	6	Tr.50	Plan	1:100	Post-excavation plan of trench
47	6	Tr.51	Plan	1:100	Post-excavation plan of trench
48	6	Tr.48	Section	1:10	SW facing section of [008]
49	7	Tr.48	Section	1:10	NW facing section of [010]
50	7	Tr.48	Section	1:10	SW facing section of [012]
51	8	Tr.52	Plan	1:100	Post-excavation plan of trench 52
52	8	Tr.53	Plan	1:100	Post-excavation plan of trench 53
53	8	Tr.54	Plan	1:100	Post-excavation plan of trench 54
54	8	Tr.55	Plan	1:100	Post-excavation plan of trench 55
55	8	Tr.56	Plan	1:100	Post-excavation plan of trench 56
56	8	Tr.57	Plan	1:100	Post-excavation plan of trench 57
57	8	Tr.58	Plan	1:100	Post-excavation plan of trench 58
58	7	Tr.53	Section	1:10	SW facing section of [018]
59	7	Tr.53	Plan	1:20	Mid excavation plan of [018]

*Photographic Register*

<b>Image No.</b>	<b>Description</b>	<b>From</b>	<b>Date</b>
001	Trench 1	N	13/10/15
002	Trench 2	N	13/10/15
003	Trench 3		13/10/15
004	Trench 4		13/10/15
005	Trench 5		14/10/15
006	Trench 6		14/10/15
007	Trench 7		14/10/15
008	Trench 8		14/10/15
009	Trench 9	W	15/10/15
010	Trench 10	W	15/10/15
011	Trench 11	W	15/10/15
012	Trench 12	E	15/10/15
013	Trench 13	NE	16/10/15
014	Trench 14	SW	16/10/16
015	Trench 15	SW	16/10/15
016	Trench 16	SW	19/10/15
017	Trench 17	S	19/10/15
018	Trench 18	W	19/10/15
019	Trench 28	WNW	19/10/15
020	Trench 29	E	20/10/15
021	Trench 30	E	20/10/15

Image No.	Description	From	Date
022	Trench 31	E	20/10/15
023	Trench 32	E	21/10/15
024	Test Pit 1	SW	21/10/15
025	Test Pit 1	W	21/10/15
026	Test Pit 2	ENE	21/10/15
027	Test Pit 2	SSW	21/10/15
028	Test Pit 3	SSE	21/10/15
029	Test Pit 3	E	21/10/15
030	Test Pit 4	SSW	21/10/15
031	Test Pit 4	E	21/10/15
032	Test Pit 5	S	21/10/15
033	Test Pit 5	N	21/10/15
034	Test Pit 6	NNW	21/10/15
035	Test Pit 21	NE	21/10/15
036	Test Pit 22	S	22/10/15
037	Test Pit 23	S	22/10/15
038	Test Pit 24	N	22/10/15
039	Test Pit 33	SW	22/10/15
040	Test Pit	WNW	23/10/15
041	Post excavation view of Trench 34	W	23/10/15
042	Post excavation view of Trench 35	W	23/10/15
043	Post excavation view of Trench 36	WNW	26/10/15
044	Post excavation view of Trench 37	E	26/10/15

<b>Image No.</b>	<b>Description</b>	<b>From</b>	<b>Date</b>
045	Post excavation view of Trench 38	ESE	26/10/15
046	Post excavation view of Trench 39	ESE	26/10/15
047	Post excavation view of Trench 40	E	27/10/15
048	Post excavation view of Trench 47	SE	27/10/15
049	Post excavation view of Trench 46	SSE	27/10/15
050	Post excavation view of Trench 45	NNW	27/10/15
051	Post excavation view of Trench 44	NNW	28/10/15
052	Post excavation view of Trench 43	NNW	28/10/15
053	Post excavation view of Trench 42	NNW	28/10/15
054	Post excavation view of Trench 41	N	28/10/15
055	Post excavation view of Trench 27	N	28/10/15
056	Post excavation view of Trench 48	SE	29/10/15
057	Post excavation view of Trench 49	S	29/10/15
058	Post excavation view of Trench 50	ESE	29/10/15
059	Post excavation view of Trench 51	WNW	29/10/15
060	Pre excavation view of [008]	NW	29/10/15
061	Pre excavation view of [010]	ESE	29/10/15
062	Pre excavation view of [012]	NW	29/10/15
063	Pre excavation view of [014]	NW	29/10/15
064	Pre excavation view of [016]	NW	29/10/15
065	Post excavation view of [008]	NW	29/10/15
066	South west facing section of [008]	SW	29/10/15
067	Post excavation view of [010]	NW	29/10/15

<b>Image No.</b>	<b>Description</b>	<b>From</b>	<b>Date</b>
068	Post excavation view of [010]	NW	29/10/15
069	Post excavation view of [012]	NW	29/10/15
070	South west facing section of [012]	SW	29/10/15
071	Post excavation view of Trench 52	ESE	30/10/15
072	Post excavation view of Trench 53	ESE	30/10/15
073	Post excavation view of Trench 54	ENE	30/10/15
074	Pre excavation view of [018]	WSW	30/10/15
075	Pre excavation view of [020]	WSW	30/10/15
076	Post excavation view of [018]	WSW	30/10/15
077	WSW facing section of [018]	WSW	30/10/15
078	WSW facing section of [018]	WSW	30/10/15
079	Trench 58	N	02/11/15
080	Trench 55	NE	02/11/15
081	Trench 20	ESE	03/11/15
082	Trench 19	ESE	03/11/15

## Appendix 3: Discovery &amp; Excavation in Scotland

<b>LOCAL AUTHORITY:</b>	South Lanarkshire
<b>PROJECT TITLE/SITE NAME:</b>	Prettsmill Quarry
<b>PROJECT CODE:</b>	RA15083
<b>PARISH:</b>	Carmichael
<b>NAME OF CONTRIBUTOR:</b>	Douglas Gordon
<b>NAME OF ORGANISATION:</b>	Rathmell Archaeology Limited
<b>TYPE(S) OF PROJECT:</b>	Evaluation
<b>NMRS NO(S):</b>	-
<b>SITE/MONUMENT TYPE(S):</b>	Pits
<b>SIGNIFICANT FINDS:</b>	Pottery; lithics.
<b>NGR (2 letters, 8 or 10 figures)</b>	NS 9019 3968
<b>START DATE (this season)</b>	13 <sup>th</sup> October 2015
<b>END DATE (this season)</b>	3 <sup>rd</sup> November 2015
<b>PREVIOUS WORK (incl. DES ref.)</b>	No
<b>MAIN (NARRATIVE) DESCRIPTION:</b> (may include information from other fields)	<p>A programme of archaeological investigative works was carried out for Surface Investments Ltd in respect to the development of a quarry for sand extraction and the formation of access at Prettsmill Farm, South Lanarkshire. (11/00776/PP). The archaeological works were designed to determine the archaeological potential of the development area and hence inform the specification for mitigation of the impact on the archaeological remains within the development area.</p> <p>The archaeological investigative works consisted of an intrusive evaluation which was designed to assess an 8% sample of the proposed development area. The works were carried out between 13<sup>th</sup> October and the 3<sup>rd</sup> November 2015, with a total of 54 trenches excavated.</p> <p>The works identified two concentrations of significant archaeological features comprising seven roughly circular pits located in close proximity to one another in two separate trenches. The pottery and flint artefacts recovered appear to be indicative of a Bronze Age date.</p>
<b>PROPOSED FUTURE WORK:</b>	Yes
<b>CAPTION(S) FOR ILLUSTRS:</b>	None
<b>SPONSOR OR FUNDING BODY:</b>	Surface Investments Ltd
<b>ADDRESS OF MAIN CONTRIBUTOR:</b>	Unit 8 Ashgrove Workshops, Kilwinning, Ayrshire KA13 6PU
<b>EMAIL ADDRESS:</b>	contact@rathmell-arch.co.uk
<b>ARCHIVE LOCATION (intended/deposited)</b>	Report to West of Scotland Archaeology Service and archive to HES Collections.

## Contact Details

41. Rathmell Archaeology can be contacted at our Registered Office or through the web:
- |                           |  |
|---------------------------|--|
| Rathmell Archaeology Ltd  | <a href="http://www.rathmell-arch.co.uk">www.rathmell-arch.co.uk</a>             |
| Unit 8 Ashgrove Workshops |  |
| Kilwinning                | t.: 01294 542848   |
| Ayrshire                  | f.: 01294 542849   |
| KA13 6PU                  | e.: <a href="mailto:contact@rathmell-arch.co.uk">contact@rathmell-arch.co.uk</a> |
42. The West of Scotland Archaeology Service can be contacted at their office or through the web:
- |                                      |  |
|--------------------------------------|--|
| West of Scotland Archaeology Service | <a href="http://www.wosas.org.uk">www.wosas.org.uk</a>                                 |
| 231 George Street                    | t.: 0141 287 8330  |
| Glasgow                              | e.: <a href="mailto:enquiries@wosas.glasgow.gov.uk">enquiries@wosas.glasgow.gov.uk</a> |
| G1 1RX                               |  |

End of Document