

Black Bull Close, Brechin: Archaeological Mitigation

Data Structure Report




by Liam McKinstry
issued 29th November 2016
on behalf of Mr Aaron Souttar

RATHMELL 
ARCHAEOLOGY LTD

Quality Assurance

This report covers works which have been undertaken in keeping with the issued brief as modified by the agreed programme of works. The report has been prepared in keeping with the guidance of Rathmell Archaeology Limited on the preparation of reports. All works reported on within this document have been undertaken in keeping with the Chartered Institute for Archaeologists' Standards and Policy Statements and Code of Conduct.

Signed  Date29th November 2016.

In keeping with the procedure of Rathmell Archaeology Limited this document and its findings have been reviewed and agreed by an appropriate colleague:

Checked  Date29th November 2016.

Copyright Rathmell Archaeology Limited. All rights reserved.

No part of this report may be copied or reproduced by any means without prior written permission from Rathmell Archaeology Limited. If you have received this report in error, please destroy all copies in your possession or control and notify Rathmell Archaeology Limited.

This report has been prepared for the exclusive use of the commissioning party and unless otherwise agreed in writing by Rathmell Archaeology Limited, no other party may use, make use of or rely on the contents of the report. No liability is accepted by Rathmell Archaeology Limited for any use of this report, other than the purposes for which it was originally prepared and provided.

Opinions and information provided in the report are on the basis of Rathmell Archaeology Limited using due skill, care and diligence in preparation of the same and no explicit warranty is provided as to their accuracy. It should be noted and it is expressly stated that no independent verification of any of the documents or information supplied to Rathmell Archaeology Limited has been made.

Quality Assurance Data

Author(s)	Liam McKinstry		
Date of Issue	28 th November 2016	Version	1.0
Commissioning	Aaron Souttar		
Event Name	Black Bull Close, Brechin		
Event Type	Building Recording (Level 1)		
Event Date(s)	12 th to 15 th of September 2016		
Rathmell Code	RA16024	OASIS Ref	rathmell1-260762
Location	United Kingdom: Scotland: Angus		
NGR	NS 5974 6024	Parish	Brechin
Designation(s)	None		
Canmore IDs	None		

Contents

Introduction and Planning Context..... 5

Historical Background 5

Project Works..... 6

Findings: Building Recording 6

 20a Swan Street (Store Room) 10

 SSE Elevation (Front)..... 10

 NNW elevation (Rear) 22

 20a Swan Street (Store Room): Interior..... 22

 Ground Floor: Rooms 1-4 22

 1st Floor: Rooms 5-6 23

 20 Swan Street (Former Print Works)..... 33

 NNW Elevation (Front) 33

 SSE Elevation (Rear)..... 33

 ENE Elevation 33

 WSW Elevation..... 33

 20 Swan Street (Former Print Works): Interior..... 33

 Ground (upper) Floor 34

 Basement (lower) Floor 34

 14-18 Swan Street 46

 NNW Elevation (Front) 46

 SSE Elevation (Rear)..... 46

 20 Swan Street: Interior 46

 Ground Floor..... 46

 1st Floor..... 46

 2nd Floor 47

Discussion 47

Conclusion 48

Acknowledgements 48

References 49

 Documentary 49

 Cartographic..... 49

 Appendix 1: Discovery & Excavation in Scotland 50

Appendix 1: Photo Register 51

 Photographic Register 51

Contact Details 62

Figures

Figure 1: Site Location Plan	7
Figure 2a: Extract from Gordon's <i>Map of Eastern Scotland</i> (1636-52)	8
Figure 2b: Extract from Roy's Military Survey of Scotland (Highlands) (1747-52).....	8
Figure 3a: Extract from Wood's <i>Plan of the City of Brechin</i> (1823).....	9
Figure 3b: Extract from the 25-inch 1 st edition Ordnance Survey (1865)	9
Figure 4: Elevations of 20a Swan Street (Store Room).....	11
Figure 5: Plan of Ground and 1 st Floors of 20a Swan Street (Store Room).....	12
Figure 6a: View of Room 1, Ground Floor, 20a Swan St. From ENE	13
Figure 6b: View of Room 1, Ground Floor, 20a Swan St. From WSW.....	13
Figure 7a: View of Room 1, Ground Floor, 20a Swan St. From S	14
Figure 7b: View of Rooms 2 & 3, Ground Floor, 20a Swan St. From ENE	14
Figure 8a: View of Room 3, Ground Floor, 20a Swan St. From ENE	15
Figure 8b: View of fireplace in WSW facing wall, Room 1, Ground Floor, 20a Swan St.	15
Figure 9a: View of Room 4, Ground Floor, 20a Swan St. From WSW.....	16
Figure 9b: View of Room 4, Ground Floor, 20a Swan St. From ENE	16
Figure 10a: View of fireplace in ENE facing wall, Room 4, Ground Floor, 20a Swan St	17
Figure 10b: View of ceiling, Room 4, Ground Floor, 20a Swan St. From ENE.....	17
Figure 11a: View of Room 5, 1 st Floor, 20a Swan St. From ENE.....	18
Figure 11b: View of Room 5, 1 st Floor, 20a Swan St. From WSW.....	18
Figure 12a: View of fireplace in NNW facing wall, Room 5, 1 st Floor, 20a Swan St	19
Figure 12b: View of Room 6, 1 st Floor, 20a Swan St. From WSW.....	19
Figure 13a: View of Room 6, 1 st Floor, 20a Swan St. From ESE.....	20
Figure 13b: View of fireplace & blocked floorboards, Room 6, 1 st Floor, 20a Swan St. From WNW	20
Figure 14a: View of Skylights within NNW ceiling of Room 6, 1 st Floor, 20a Swan St.....	21
Figure 14b: View of fireplace in WSW facing wall, Room 6, 1 st Floor, 20a Swan St	21
Figure 15: N and S Elevations of 20 Swan Street (Former Print Works).....	24
Figure 16: Ground and Basement floor plans of 20 Swan Street (Former Print works).....	25
Figure 17a: View of Room 1, Ground Floor, 20 Swan St. From SSW	26
Figure 17b: Ceiling & roof beams, Room 1, 20 Swan St. From ENE.....	26
Figure 18a: View of Room 1's skylight, Ground Floor, 20 Swan St. From NE	27
Figure 18b: View of Room 1, Ground Floor, 20 Swan St. From S	27
Figure 19a: View of stairs to Basement, Room 1, Swan St. From W.....	28
Figure 19b: View of Room 2a, Basement, 20 Swan St. From W	28
Figure 20a: View of Room 2b, Basement, 20 Swan St. From W	29
Figure 20b: View of Room 2c, Basement, 20 Swan St. From W	29

Figure 21a: View of Room 3a, Basement, 20 Swan St. From W	30
Figure 21b: View of Room 3b, Basement, 20 Swan St. From W	30
Figure 22a: View of Room 3c, Basement, 20 Swan St. From N	31
Figure 22b: View of Room 3d, Basement, 20 Swan St. From N	31
Figure 23a: View of Rooms 2 & 3, Basement, 20 Swan St. From N	32
Figure 23b: View of stairs to Ground Floor, 20 Swan St. From E	32
Figure 25a: Front elevation of 14-18 Swan St. From the N	36
Figure 25b: Rear elevation of 14-18 Swan St. From the E	36
Figure 26a: View of Room 1, Ground Floor, 14-18 Swan St. From the E	37
Figure 26b: View of Room 1, Ground Floor, 14-18 Swan St. From the W	37
Figure 27a: Rear window, Room 1, Ground Floor, 14-18 Swan St. From the N	38
Figure 27b: View of glass frontage, Room 1, Ground Floor, 14-18 Swan St. From the E	38
Figure 28a: Stairs to the 1 st Floor from ground level, 14-18 Swan St. From the N	39
Figure 28b: Staircase from the 1 st Floor to ground level, 14-18 Swan St. From the SSE	39
Figure 29a: View of Room 2, 1 st Floor, 14-18 Swan St. From the W	40
Figure 29b: View of Room 3, 1 st Floor, 14-18 Swan St. From the W	40
Figure 30a: Fireplace within E wall of Room 3, 1 st Floor, 14-18 Swan St. From the W	41
Figure 30b: Staircase from the 1 st to 2 nd Floor, 14-18 Swan St. From the SSE	41
Figure 31a: Staircase from the 2 nd to 1 st Floor, 14-18 Swan St. From the NNW	42
Figure 31b: View of Room 4a, 2 nd Floor, 14-18 Swan St. From the NNW	42
Figure 32a: View of Room 4a, 2 nd Floor, 14-18 Swan St. From the SSE	43
Figure 32b: Fitted box within Room 5, 2 nd Floor, 14-18 Swan St. From the S	43
Figure 33a: View of Room 5, 2 nd Floor, 14-18 Swan St. From the WSW	44
Figure 33b: View of Room 5, 2 nd Floor, 14-18 Swan St. From the WNW	44
Figure 34a: Fitted shelf within Room 5, 2 nd Floor, 14-18 Swan St. From the NE	45
Figure 34b: Light switch W wall, Room 5, 2 nd Floor, 14-18 Swan St. From the WNW	45

Introduction and Planning Context

1. This Data Structure Report represents the findings of Historic Building Recording works required by Mr Aaron Souttar of J. W. Souttar Architectural Services and Building Construction in respect of: the change of use for the former print works at 20 Swan Street to form 4 dwelling houses; the change of use from a store at 20a Swan Street to form 4 flatted dwellings; and the change of use from a store at 14-18 Swan Street to form a dwelling house at the Former Print Works. All are located off Black Bull Close, Brechin, DD9 6EF (NGR: NO 5974 6024) (Planning App: 15/00861/FULL).
2. The development has been granted planning consent by Angus Council (Planning App: 15/00861/FULL) subject to a negative suspensive condition for archaeology (PAN 2/2011, SPP, SHEP). Aberdeenshire Council Archaeology Service (ACAS), who advise Angus Council on archaeological matters, has provided guidance on the structure of Historic Building Recording works required on this site to inform the planning process. In particular they have specified a Level 1 survey in accordance with *Recording Historic Buildings, A Descriptive Specification* (RCHME Third Edition, 1996).
3. The works are designed to create a competent record of the B-Listed eighteenth and nineteenth century buildings at 20a, 20 and 14-18 Swan Street, Brechin. Rathmell Archaeology Ltd has been appointed to act with regard to the archaeological issue for Mr Aaron Souttar on behalf of J.W. Souttar Architectural Services and Building Construction. The project works described below were designed to comply with the identified requirements of Aberdeenshire Council Archaeology Service.

Historical Background

4. The City of Brechin lies to the immediate north of the River Esk and 7.5km to the west of Montrose. The earliest activity within the town was identified at the cathedral where a Roman coin was recovered from the mid-4th century AD (Canmore ID35057). The initial formation of the city centred on a religious community, most probably close to the present cathedral, from AD 970 onwards. In the medieval period the city was granted a market and the status of an episcopal by David I which was later confirmed by a royal charter around AD 1165-1171. The city began to develop into a de-facto royal burgh in the late fifteenth century which would later be confirmed in 1555. The city's status as an episcopal see led to a close link with the church which would continue until the episcopacy was abolished in the later seventeenth century. This close link with the church was reflected in many of the sites and places names within the city.
5. Gordon's map from 1636-52 (Figure 2a) shows one of the earliest cartographic depictions of Brechin though it is not until the mid-eighteenth century with William Roy's map of the Highlands (Figure 2b) that the individual streets and buildings of Brechin are shown in any detail. Roy's map clearly shows what would have been the core of the original royal burgh around the High Street. Wood's 1823 plan of the city (Figure 3a) shows an expanded city and also more detail of the buildings and streets within the city, with long garden strips at the rear of the buildings on High Street which would most likely be the original burgh plots of the medieval town. The 1st edition Ordnance Survey map shows little change to the layout of the core of the city though it does show the expansion of the town to the east. One notable change within the 1st Ordnance Survey map 1865 (Figure 3b) is that some of the streets have changed names such as Meatmarket Wynd becoming Swan Street, Blackbull Close becoming Smiths Lane (and in recent times Liddle's Close) and Upper West Wynd becoming St. David Street. Some of these changes may have been purely cosmetic but others like the renaming of Meatmarket Wynd may reflect a change in the activities being carried out in an area.
6. Due to the city's links with the church it is not surprising that a number of medieval religious sites still survive within Brechin such as a round tower (SM90040) which was attached to the southwest corner of the cathedral's nave. This was originally free standing, dating to approximately AD 1100. A hogback stone (Canmore ID 35068) dating to the same period was also located in the environs of the cathedral. The Bishops Palace

(Canmore ID 35061), built in the early fourteenth century, which lay between Church Street and Bishops Close. The only remaining part of the palace still to survive is a gateway section named Carnock's Tower. To the north of the cathedral survives the remains of the Maison Dieu Hospital (SM90040). The remains of the Crown Inn (Canmore ID 35071), which lie beneath a modern building on the corner of St. Davids Street and High Street, was supposedly a hospitium of the Knights Templar. There are also a number of medieval and post medieval sites of secular significance within Brechin. One such site is Brechin Castle (Canmore ID 34782), and its associated kirk and stables, which is thought to be sited on an earlier motte (Canmore ID 34783). The city's market cross (Canmore ID 193371) was located close to the Bishop's Palace at the High Street though it had been removed by the eighteenth century.

7. No known archaeological sites lie within the development area and the core of standing buildings within the area are eighteenth or nineteenth century in date. However the overall layout of the buildings and grounds off High Street and Swan Street would suggest the later eighteenth and nineteenth century buildings and boundaries respected the older medieval town plan.

Project Works

8. The programme of works was undertaken on several visits which took place between the 12th-15th September 2016 and the agreed programme of mitigation works was agreed to comprise the following key components:
 - a. a programme of building recording was carried out at 20a Swan Street (former store room), 20 Swan Street (former print works) and 14-18 Swan Street (former shop). The historic building recording was carried out to Level 1: this generates a descriptive, fuller record than Photographic Survey, with the addition of measured floor plans and elevations and a written account of the building's plan, form, function, age and development sequence (as per RCHME).
 - b. the production of a report which integrates the findings of the works (HBR) through a Data Structure Report, detailing the nature, form and extent of the historic buildings(s).
9. All work was undertaken in accordance with the Aberdeenshire Council Archaeology Service (ACAS) standard conditions and complied with the Chartered Institute of Field Archaeology's Standards and Policy Statements and Code of Conduct.

Findings: Building Recording

10. The purpose of the building recording was to investigate and record the surviving elements of the eighteenth and nineteenth century buildings at 20a, 20 and 14-18 Swan Street, Brechin (Figure 1). The aims of the exercise were to provide a baseline record of the extant structures prior to the conversion of these buildings to residential use.
11. A detailed measured survey was carried out by J. W. Souttar Architectural Services and Building Construction and the plans made available to Rathmell Archaeology. The measured surveys form the base for the floor plans and elevation heights used within this report. The following outlines the component structures and significant features which make up the three buildings on Swan Street.

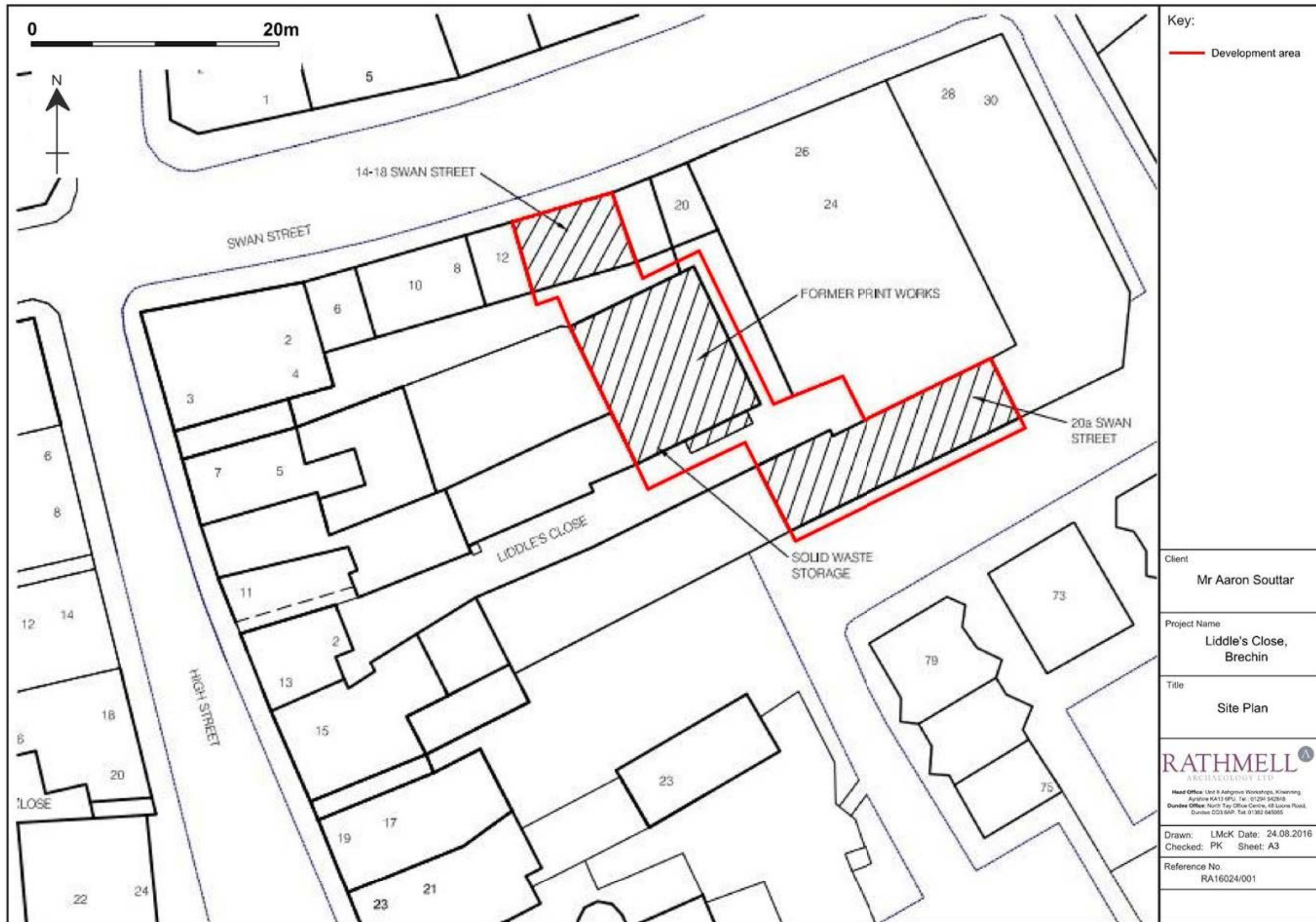


Figure 1: Site Location Plan

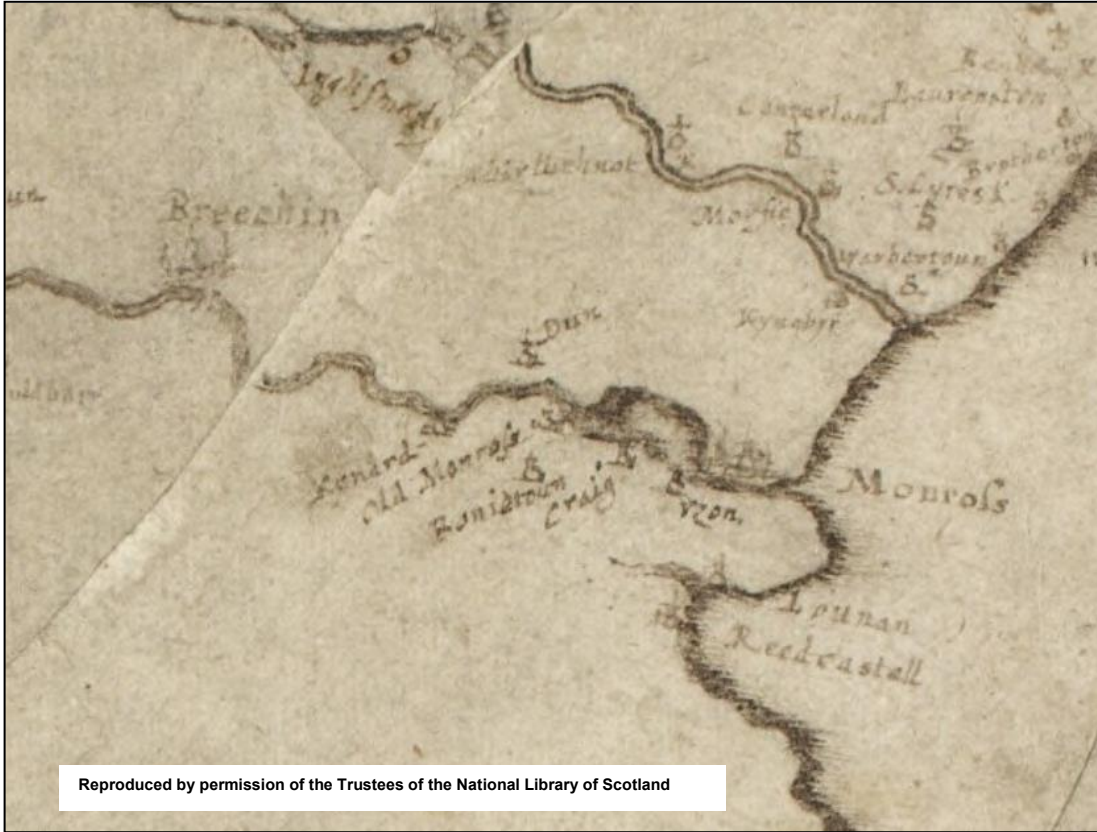


Figure 2a: Extract from Gordon's *Map of Eastern Scotland* (1636-52)

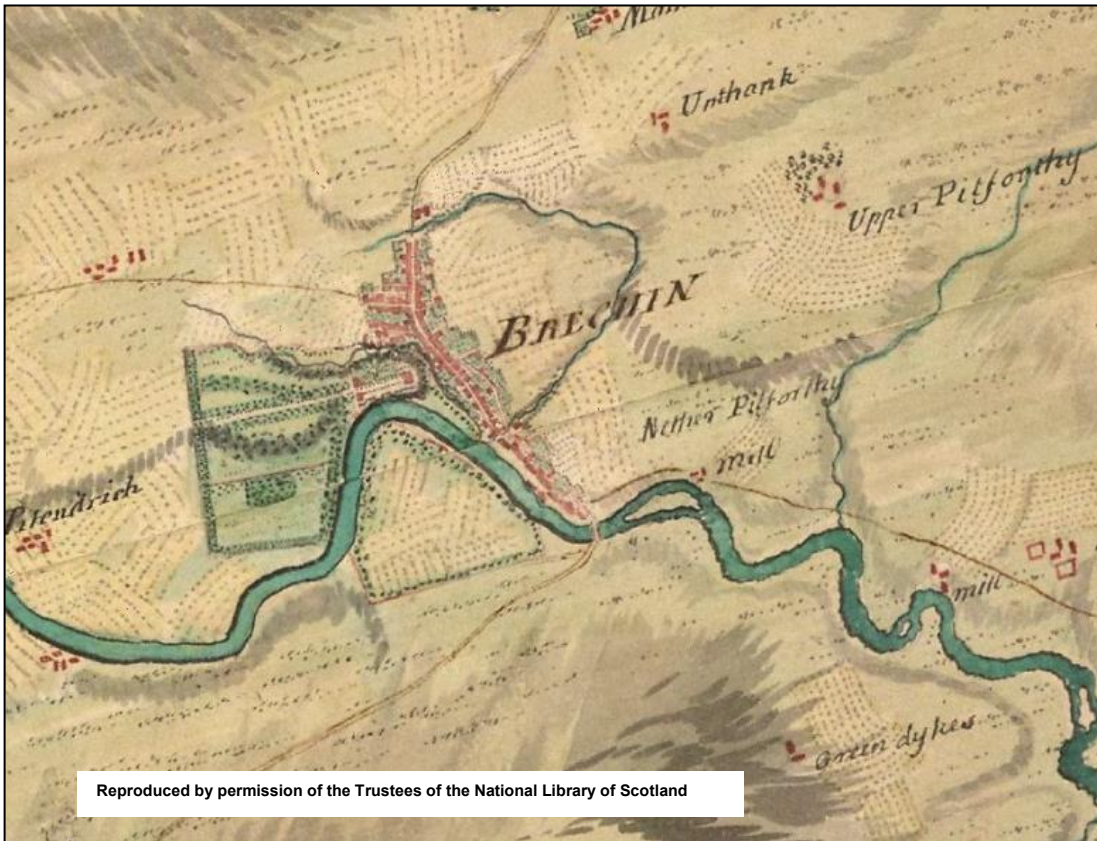


Figure 2b: Extract from Roy's *Military Survey of Scotland (Highlands)* (1747-52)



Figure 3a: Extract from Wood's *Plan of the City of Brechin* (1823)



Figure 3b: Extract from the 25-inch 1st edition Ordnance Survey (1865)

20a Swan Street (Store Room)

12. 20a Swan Street consisted of a eighteenth or nineteenth century tenement row which ran in an approximate ENE to WSW direction on the northern side of Liddles (Black Bull) Close. Later twentieth century buildings abutted both the ENE and the WSW ends of the building.

SSE Elevation (Front)

13. The building's main, SSE elevation (Figure 4) is for the most part built of squared coursed red sandstone rubble. Some cherry-cocking is evident. The exception to this is at the base of the ENE end where large roughly faced whinstone rubble and boulders have been incorporated into the building fabric, possibly during later alterations.
14. Though in its current state the building is divided into two properties, from the architectural evidence it seems probable that it may once have been three separate properties. The current elevation consists nine bays (which become more asymmetrical towards the WSW end), with 2 doorways and 13 windows arranged in an irregular fashion. The windows are a mixture of original sash and case, though some have been replaced by modern forms and others have been blocked up. The door openings appears to be original but modern temporary (wooden board) doors have been fitted. The door at the ENE end of the elevation is reached via a series of three stone steps at its base. Similar steps may also have existed for the door at the WSW end of the elevation but they had been removed and the door is now surmounted by a rectangular light.
15. Several later alterations could be seen on the SSE elevation which are marked (i-iii) on Figure 4. The first of these alterations (i) was noted on one of the current windows where the wall beneath the window appeared to have been blocked up suggesting that the window had originally been a doorway. The second alteration (ii) was located directly above the second and consisted of a window, which like (i) showed signs that it was a partially blocked up doorway and converted into a window. There is also the possibility that the partially blocked door was also a later addition to the building as a main internal (NNE-SSW running) wall may have once ran into that part of the front elevation (Figures 4 and 5). It is difficult to say what the original purpose of the blocked up opening was, though it may mark the site of a hatch for loading or unloading goods at first floor level via a hoist. The third alteration (iii) was located to the immediate ENE of (i) and consisted of a large square blocked-up area which may possibly have once been a set of double doors. The stone used for the blocking was of a similar sandstone to that used in the rest of the building, but the size and shape of the stones was different.
16. The roof of 20a Swan Street was slated, with the ridges topped with lead. The roof was hipped at the WSW end and terminated in a gable end at the ENE, presumably marking where it originally abutted another tenement style structure. The guttering and pipes appear to have been mainly cast iron although some sections had been replaced with plastic. Two chimneys could be observed. The first was located in a central position and was constructed of red sandstone blocks, while the second was located at the ENE gable end and constructed with red bricks.



Figure 4: Elevations of 20a Swan Street (Store Room).

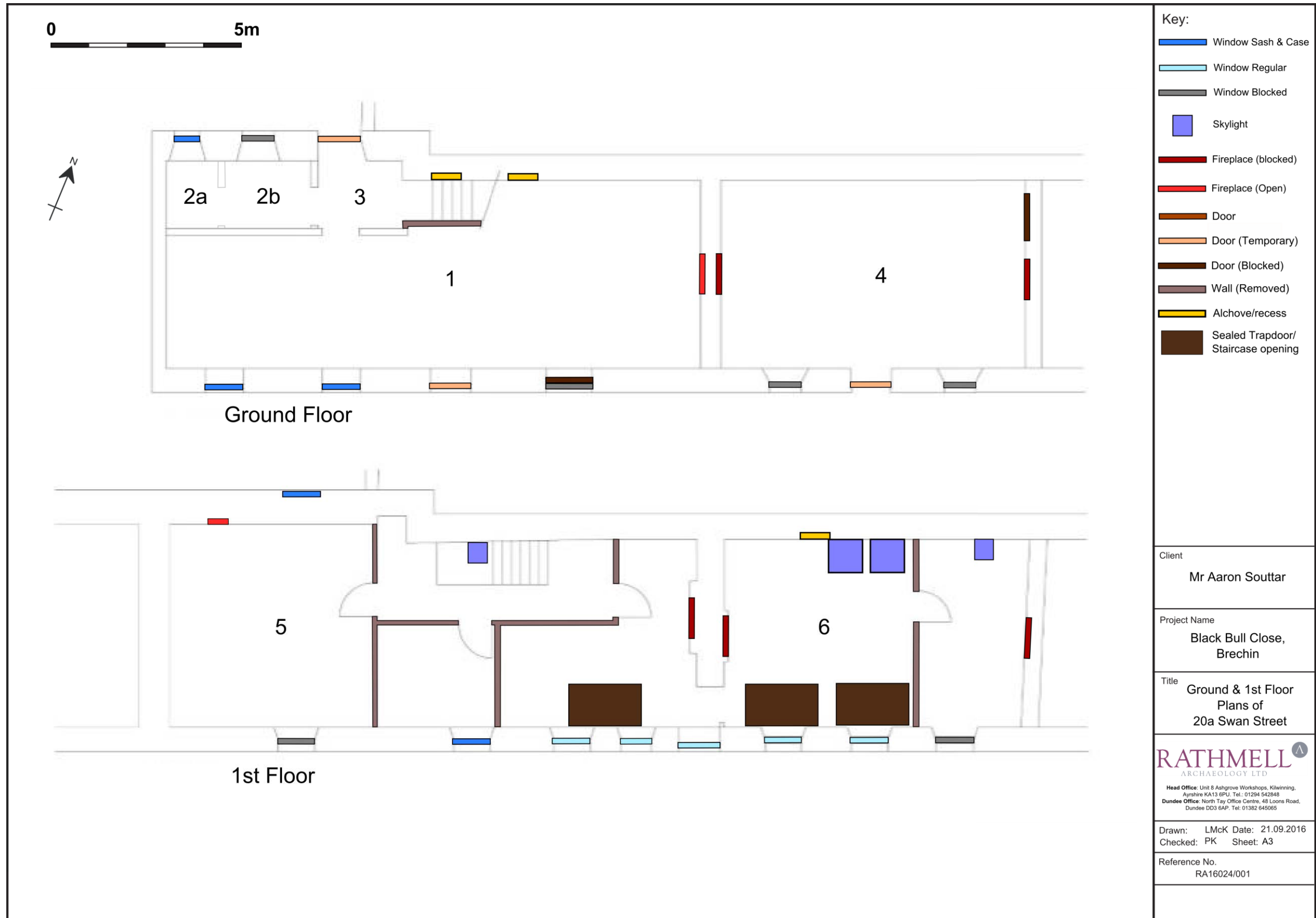


Figure 5: Plan of Ground and 1st Floors of 20a Swan Street (Store Room).



Figure 6a: View of Room 1, Ground Floor, 20a Swan St. From ENE



Figure 6b: View of Room 1, Ground Floor, 20a Swan St. From WSW



Figure 7a: View of Room 1, Ground Floor, 20a Swan St. From S



Figure 7b: View of Rooms 2 & 3, Ground Floor, 20a Swan St. From ENE



Figure 8a: View of Room 3, Ground Floor, 20a Swan St. From ENE



Figure 8b: View of fireplace in WSW facing wall, Room 1, Ground Floor, 20a Swan St.



Figure 9a: View of Room 4, Ground Floor, 20a Swan St. From WSW



Figure 9b: View of Room 4, Ground Floor, 20a Swan St. From ENE



Figure 10a: View of fireplace in ENE facing wall, Room 4, Ground Floor, 20a Swan St



Figure 10b: View of ceiling, Room 4, Ground Floor, 20a Swan St. From ENE



Figure 11a: View of Room 5, 1st Floor, 20a Swan St. From ENE



Figure 11b: View of Room 5, 1st Floor, 20a Swan St. From WSW



Figure 12a: View of fireplace in NNW facing wall, Room 5, 1st Floor, 20a Swan St



Figure 12b: View of Room 6, 1st Floor, 20a Swan St. From WSW



Figure 13a: View of Room 6, 1st Floor, 20a Swan St. From ESE



Figure 13b: View of fireplace & blocked floorboards, Room 6, 1st Floor, 20a Swan St. From WNW



Figure 14a: View of Skylights within NNW ceiling of Room 6, 1st Floor, 20a Swan St.



Figure 14b: View of fireplace in WSW facing wall, Room 6, 1st Floor, 20a Swan St

NNW elevation (Rear)

17. The building's NNW elevation (Figure 4) was constructed using similar material and construction methods as the NNE elevation, although due to the presence of a modern building built up against it, only the WSW end could now be viewed. The elevation consisted of one bay of three windows and one door. The margins of the ground floor windows differed from those in the front, SSE, elevation – comprising machine-cut ashlar as opposed to hand-tooled blocks - which may suggest that both were later additions. The window at the WSW end of the elevation was sash and case and the other was boarded up. The 1st floor window was hinged with the upper part of the window consisting of a dormer projecting out from the roof. The door, like those in the SSE elevation, was a recent temporary insertion made of wooden plaster board.
18. The NNW side of the roof was of a similar shape and construction to that of the SSE. The cast iron guttering and pipes on the NNW side were also similar to those on the SSE side. One brick built chimney was situated the immediate WSW of the 1st floor window.

20a Swan Street (Store Room): Interior

19. In total there are six rooms within the building at 20a Swan Street; 4 on the ground floor and 2 on the 1st floor. Figure 5 is based on the measured plan supplied by J. W. Souttar Architectural Services and Building Construction.

Ground Floor: Rooms 1-4

20. Room 1 (Figures 6a and 6b) was originally rectangular in plan but the construction of Rooms 2 and 3 within the WNW angle meant that the modern floor plan was 'L'-shaped. The walls which formed Rooms 2 and 3 were brick built with plastered surfaces. The vast majority of the flooring within Room 1 had been removed prior to the building recording with only small sections of a bare poured concrete surface surviving close to the walls and beneath the temporary internal roof supports. The surviving walls of Room 1 were plastered and painted and all of the observable services appeared to date to the twentieth century or later. No original eighteenth or nineteenth century features were present. On the SSE wall there was one doorway (the original door replaced by a temporary one) and three windows, one of which appears to have been a former doorway with the lower half blocked to create a window (See SSE elevation). The NNW wall was staggered on its WSW side due to the presence of rooms 2 and 3 (Figure 5). Two recesses for shelving were noted on the NNW wall directly beneath the current staircase (recently demolished) (Figure 7a). One of these recesses would have been partially covered by the staircase when it was still standing, suggesting that Rooms 2 and 3 and the staircase were later insertions to the building (Figures 7b and 8a). A fireplace was located on the ENE wall (Figure 8b). The WSW wall was plain and had no features of note.
21. Rooms 2 and 3 formed a narrow rectangle on plan, with Room 2 being further subdivided into a modern utility room (2a) and store (2b) (Figure 7b and 8a). Each of these subdivided rooms featured a window in its NNW wall. A doorway on the NNW wall of Room 3 led out into Black Bull Close with another two leading into Room (2a) to the WSW and Room 1 to the SSE. Most of the ENE end of the room had been recently demolished along with the staircase but it seems likely that the stairs entered Room 3 from the ENE. No flooring remained within Room 3 but within both subdivisions of Room 2 there was bare poured concrete floor surface similar to the surviving patches within Room 1. The ceiling within all three ground floor rooms consisted of modern wood panelling with strip lighting running along its length.
22. Access to Room 4 was off Swan Street with no connecting doorway from Room 1. The room was rectangular on plan and its walling consisted of painted plaster similar to that found in Rooms 1-3 (Figures 9a and 9b). The exception to this was the ENE wall which consisted of a painted thin plaster coating under which the walling was still visible. A number of twentieth century or later services were also visible on the walls and ceiling but there were no original features. As well as the doorway there were two windows located on the SSE wall, both of which were blocked. There were two blocked up

fireplaces, each with no original surviving features or details, on both the WSW and ENE walls (Figure 10a). Also on the ENE wall, to the immediate NNW of the fireplace, was a blocked up doorway: whether this would originally have led out onto the street or into another building is unclear. The remaining NNW wall contained no features or details of note. The ceiling within Room 4 consisted of painted lath and plaster, from which sections had broken or crumbled off (Figure 10b). The floor within Room 4 consisted of a mixture of large square/rectangular shaped, possibly original, paving stones and a bare poured concrete surface. The remains of recent internal divisions could be seen in the form of wooden roof supports, close to the door and running along the centre of the room (Figures 9a and 9b). This evidence of internal division may reflect the room's recent usage as a store room for the print works.

1st Floor: Rooms 5-6

23. Room 5 was 'L' shaped in plan with access via a now-demolished staircase from Room 3 located centrally against the NNW wall (Figures 11a and 11b). The walling within the room consisted of painted plaster directly over masonry, excepting only the extreme WSW ends of the NNW and SSE walls where the masonry was left bare and the WSW wall, which comprised an exposed brick surface. The NNW wall was staggered, projecting out slightly to the NNW at its WSW end where a small fireplace (Figure 12a) and a projecting dormer window were located. Above the opening for the demolished staircase was a small skylight set into underside of the exposed pitched roof. On the SSE wall were a row of four windows which were a mix of original sash and case and later hinged or blocked windows. On the ENE wall there was a blocked up (and painted over) central fireplace (Figure 11b) as well as an opening at its SSE end which stopped short of a window located directly opposite. This window seems to be a later addition as the ENE wall appears to have been a main internal division. There was no ceiling within the room and the original roofing timbers were visible. The flooring within the room consisted of bare floorboards in which gaps were noted. Some parts of the floor appeared to have been sealed up openings which may have been either sealed up trap doors or openings for an original staircase.
24. Room 6 was rectangular in plan (Figures 12b and 13a) with access into the room coming from the doorway in its WSW wall at its SSE end (see above for more details on the WSW wall). The walling within the room consisted of painted plaster with a plain painted wooden skirting at its base. The flooring within the room was similar to that of Room 5 with exposed plain floor boards which also contained two areas next to the SSE wall which may have been sealed up trapdoors or openings for staircases (Figure 13b). Like Room 5 there was no ceiling and a set of large double skylights (Figure 14a) along with a smaller single skylight were set into the exposed underside of the pitched roof. Located centrally on both the WSW (Figure 13a) and ENE (Figures 12b and 14b) walls were blocked up fireplaces. A series of three, later, hinged windows was set into the SSE wall none of which contained any original details.



Figure 15: N and S Elevations of 20 Swan Street (Former Print Works).

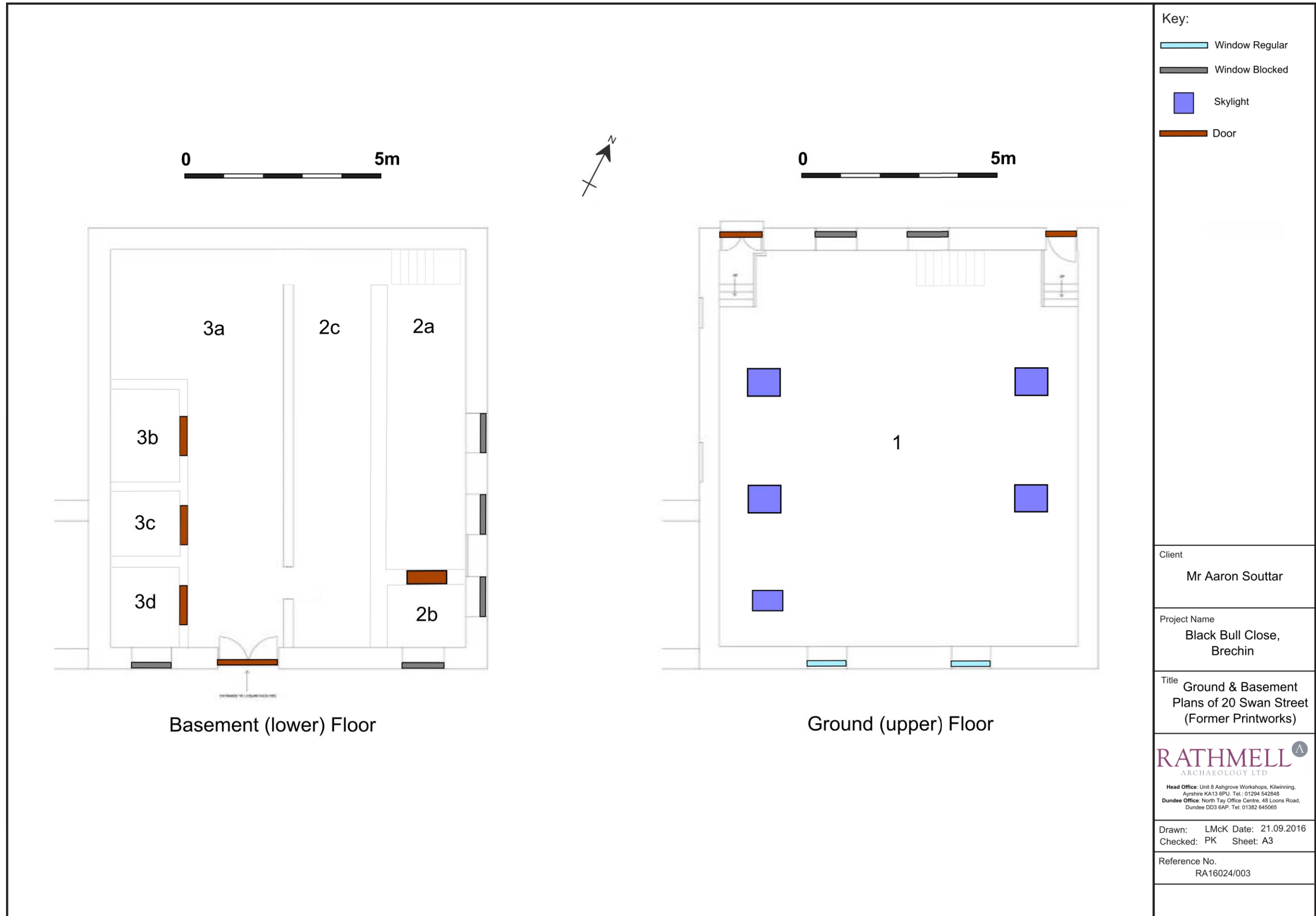


Figure 16: Ground and Basement floor plans of 20 Swan Street (Former Print works).



Figure 17a: View of Room 1, Ground Floor, 20 Swan St. From SSW



Figure 17b: Ceiling & roof beams, Room 1, 20 Swan St. From ENE



Figure 18a: View of Room 1's skylight, Ground Floor, 20 Swan St. From NE



Figure 18b: View of Room 1, Ground Floor, 20 Swan St. From S



Figure 19a: View of stairs to Basement, Room 1, Swan St. From W



Figure 19b: View of Room 2a, Basement, 20 Swan St. From W



Figure 20a: View of Room 2b, Basement, 20 Swan St. From W



Figure 20b: View of Room 2c, Basement, 20 Swan St. From W



Figure 21a: View of Room 3a, Basement, 20 Swan St. From W



Figure 21b: View of Room 3b, Basement, 20 Swan St. From W



Figure 22a: View of Room 3c, Basement, 20 Swan St. From N

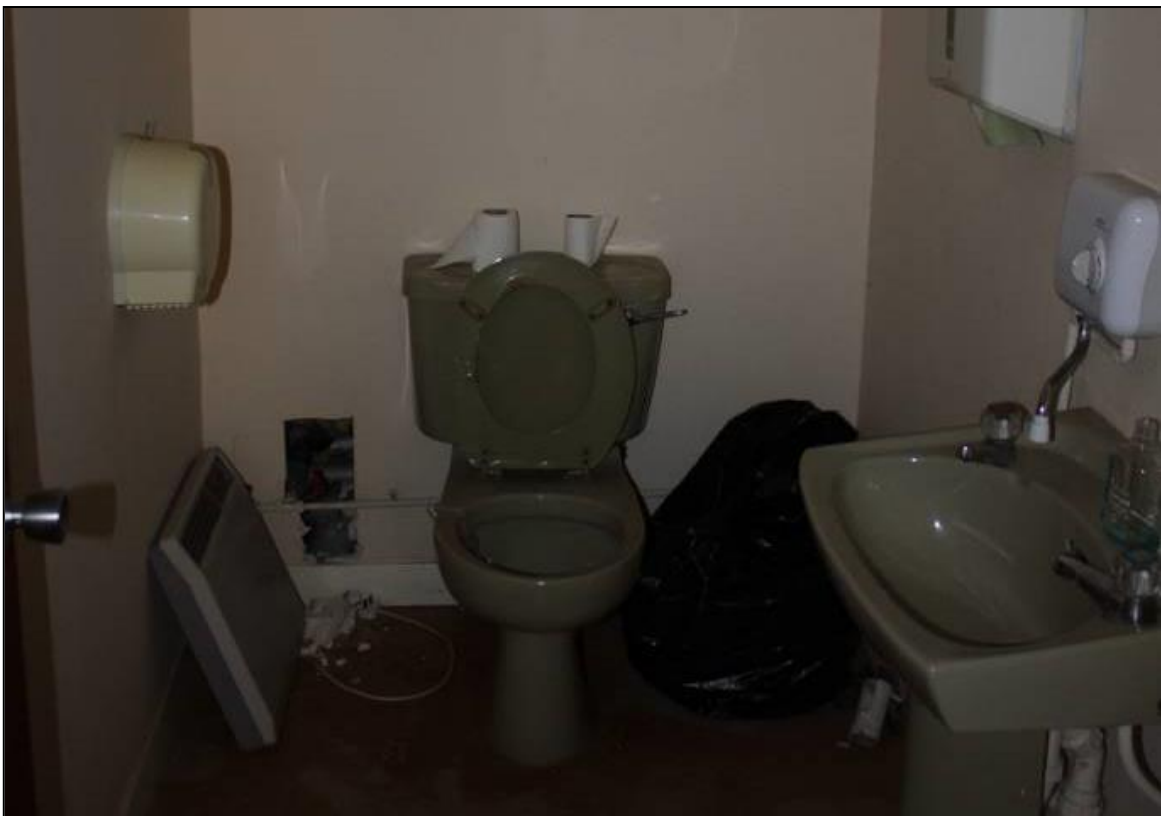


Figure 22b: View of Room 3d, Basement, 20 Swan St. From N



Figure 23a: View of Rooms 2 & 3, Basement, 20 Swan St. From N



Figure 23b: View of stairs to Ground Floor, 20 Swan St. From E

20 Swan Street (Former Print Works)

25. The former print works at 20 Swan Street consisted of a late nineteenth century building aligned in an approximate ENE to WSW direction between the two parts of Liddles (Black Bull). The NNW elevation of the building faced onto the rear of 14-18 Swan Street and the SSE faced onto the rear elevation of 20a Swan Street. A later twentieth century building was built up against its WSW elevation obscuring most of that side of the building.

NNW Elevation

26. Where visible, the building's NNW elevation (Figure 15) is built of squared coursed sandstone rubble, though parts have now been concealed beneath a layer of concrete with possible traces of paint close to the edges of the building. The elevation was divided into three bays of three windows and two doors. The doors were placed towards the outer edges of the bays, with two windows, of differing dimensions, located within the central portion. Both doors and the ENE window had painted wooden shutters, while the remaining window had been blocked with modern bricks. Another window, located above the WSW window had also been blocked with modern bricks. The NNW elevation was a gable end and there was an original chimney located at the end of the roof ridge.

SSE Elevation

27. The SSE elevation (Figure 15) is for the most part built of squared coarse sandstone rubble. Parts of the elevation had been obscured beneath a layer of concrete with possible traces of paint noticeable close to the edges of the building. The elevation was divided into two, slightly asymmetrical, bays of four windows and a set of double doors. The building has been built into steep slope, with the basement exiting out through central, modern, double doors onto Liddles Close, flanked by large rectangular windows now blocked with modern bricks. The Ground (upper) floor has two large hinged windows which seemed to be later additions. The SSE elevation was a gable end and there was an original chimney located at the end of the roof ridge.

ENE Elevation

28. The building's ENE elevation (Figure 15) is for the most part built of squared coursed sandstone rubble. Much of the elevation was rendered and then painted. The elevation comprised three equal bays with three equally spaced windows or ventilators at basement level in the SSE end. These latter features had now been blocked with modern bricks. At ground floor level, part of the ENE end was obscured by a modern 'gantry or link corridor' like structure which had been built up against it. The pitched roof was slated, with two cast iron rooftop ventilators remaining in situ on the roof ridge. There were also three skylights set into the roof.

WSW Elevation

29. The WSW elevation (Figure 15) was only partially visible due to the construction of a modern structure immediately adjacent. Only the upper part of the elevation was observable, with fabric similar to that seen in the other elevations. Traces of an earlier roofline at the SSE end showed where a previous structure had once abutted the building. Much of the elevation had been concealed beneath a thin layer of cement render, which had subsequently been painted.

20 Swan Street (Former Print Works): Interior

30. In total there are three rooms within the former print works building at 20 Swan Street; one at ground floor level and 2 on the lower, basement level (see Figure 16, based on the measured plan supplied by J. W. Souttar Architectural Services and Building Construction). All of the rooms contained a large amount of detritus and refuse left over from the building's use as a print works which made some areas difficult to access.

Ground (upper) Floor

31. Room 1 (Figures 17a & 18b) could be accessed from Liddles Close through the two doors situated at the WSW and ENE ends of the NNW elevation. The interior walls were plastered and painted, with some sections of modern synthetic panelling observed. The suspended ceiling consisted of modern synthetic tiles, placed roughly halfway up the height of the pitched roof (Figure 17b). Beneath this suspended ceiling metal roof supports could be observed along with sets of strip lighting (Figure 17b). The natural lighting for the room came through a number of skylights set into the roof (Figure 18a). The flooring within the room consisted of linoleum tiles and small areas of carpeting which overlay wooden floorboards.

Basement (lower) Floor

32. Access into Room 2 (Figure 19a & 23b) was via a narrow set of stairs located close to the WSW door where it accessed Room 1 through the NNW wall. Room 2 was rectangular on plan and subdivided by a modern timber stud wall lined with plasterboard. This ran virtually the entire length of the building, creating two narrow rooms: 2a (Figure 19b) and 2c (Figure 20b), with an opening at the NNW end separating Room 2 from Room 3 (Figure 23a). A further subdivision at the end of 2a created a small store room, 2b (Figure 20a). The ceiling and walls within Room 2 consisted of modern plastered and painted surfaces with a mixture of strip lighting and suspended lights set into the ceiling. The flooring consisted of wooden floorboards, with some use of linoleum, some carpeted and bare areas.
33. Room 3 was rectangular in plan and subdivided through the insertion of a modern plasterboard and timber stud wall along part of its length, creating one larger L-shaped room, 3a (Figure 21a) and three small rooms arranged in linear fashion against the external, WSW, wall, 3b-d (Figures 21b, 22b & 23a). These small rooms were furnished as toilets (3c and d) and a kitchen (3b). In the SSE wall was a set of modern wooden double doors. Two openings were located in the ENE wall for access into Room 2c. The ceiling and walls within Room 3 consisted of a modern plastered and painted surfaces with a mixture of strip lighting and suspended lights set into the ceiling. The flooring consisted of wooden floorboards covered variously by linoleum surfacing or carpeting, with some areas left uncovered.



Figure 24: Plan of Ground, 1st and 2nd Floors of 14-18 Swan Street.



Figure 25a: Front elevation of 14-18 Swan St. From the N



Figure 25b: Rear elevation of 14-18 Swan St. From the E



Figure 26a: View of Room 1, Ground Floor, 14-18 Swan St. From the E



Figure 26b: View of Room 1, Ground Floor, 14-18 Swan St. From the W



Figure 27a: Rear window, Room 1, Ground Floor, 14-18 Swan St. From the N



Figure 27b: View of glass frontage, Room 1, Ground Floor, 14-18 Swan St. From the E



Figure 28a: Stairs to the 1st Floor from ground level, 14-18 Swan St. From the N



Figure 28b: Staircase from the 1st Floor to ground level, 14-18 Swan St. From the SSE



Figure 29a: View of Room 2, 1st Floor, 14-18 Swan St. From the W



Figure 29b: View of Room 3, 1st Floor, 14-18 Swan St. From the W



Figure 30a: Fireplace within E wall of Room 3, 1st Floor, 14-18 Swan St. From the W

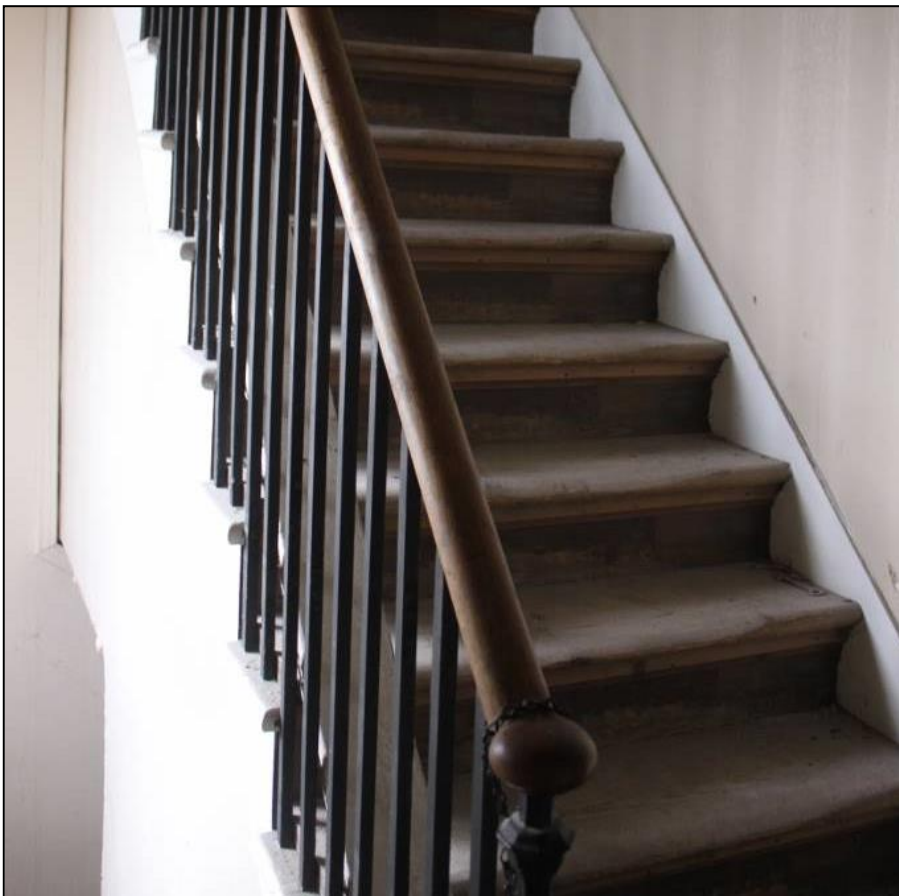


Figure 30b: Staircase from the 1st to 2nd Floor, 14-18 Swan St. From the SSE

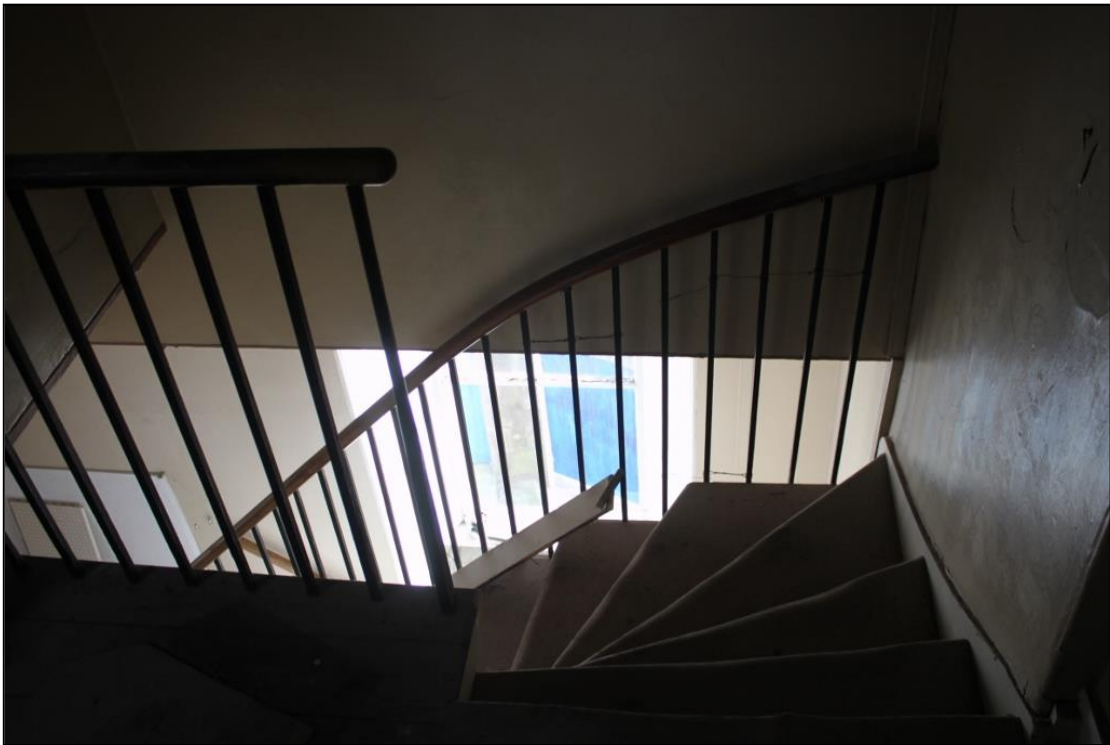


Figure 31a: Staircase from the 2nd to 1st Floor, 14-18 Swan St. From the NNW



Figure 31b: View of Room 4a, 2nd Floor, 14-18 Swan St. From the NNW



Figure 32a: View of Room 4a, 2nd Floor, 14-18 Swan St. From the SSE



Figure 32b: Fitted box within Room 5, 2nd Floor, 14-18 Swan St. From the S



Figure 33a: View of Room 5, 2nd Floor, 14-18 Swan St. From the WSW



Figure 33b: View of Room 5, 2nd Floor, 14-18 Swan St. From the WNW



Figure 34a: Fitted shelf within Room 5, 2nd Floor, 14-18 Swan St. From the NE



Figure 34b: Light switch W wall, Room 5, 2nd Floor, 14-18 Swan St. From the WNW

14-18 Swan Street

34. The building at 14-18 Swan Street consisted of what appeared to be a late nineteenth century tenement house which ran in an approximate ENE to WSW direction on the southern side Swan Street and the northern side of Liddles Close. Similarly dated buildings projected out from both the ENE and the WSW ends of the building.

NNW Elevation (Front)

35. The building's front, NNW, elevation (Figure 25a) is built of squared coursed sandstone rubble, although in this case the courses were laid out in a much more regular fashion and the individual blocks of stone more regular in size. The elevation was two storeys high and three bays in length, with a central door allowing access into the ground floor shop premises and a second doorway at the WSW end enabling access to first floor level above. The 1st floor had three equally spaced sash and case windows with the central window clearly blocked behind the glass. The 2nd floor consisted of three narrow, blocked-up windows each of which lay directly above one of the windows in the 1st floor. It is possible that these would originally have been ventilators, although alterations to the wallhead cannot also be ruled out, either at the time of construction or at a later date. The roof is pitched and slated, with two small skylights at the WSW end.

SSE Elevation (Rear)

36. The rear SSE elevation (Figure 25b) was rendered with a modern pebble dash layer, concealing the masonry below. The elevation had two regularly spaced windows at ground floor level, each of which had steel security bars fitted over them. The 1st floor had two regularly spaced windows slightly offset from the line of the ground floor windows below. No evidence for 2nd floor windows could be discerned through the pebble dashed surface of the SSE elevation. Two large skylights were set centrally within the pitched slated roof.

20 Swan Street: Interior

37. In total there are five rooms within the building at 14-18 Swan Street, one on the ground floor, two on the 1st floor and two on the 2nd floor. Figure 24 is based on the measured plan supplied by J. W. Souttar Architectural Services and Building Construction. All of the rooms contained a large amount of detritus and refuse left over from the buildings time as a print shop and storage area which made some areas of the building difficult to access.

Ground Floor

38. Room 1 (Figures 26a & 26b) was accessed via Swan Street through a central glass and timber door within a larger glazed shop front (Figure 27b). Two windows were set into the SSE wall: neither had any original features associated (Figure 27a). The walls and ceiling within Room 1 were covered in modern plaster and painted with strip lighting fitted to the ceiling. The suspended ceiling consisted of plain painted plaster which appeared to be modern. The room was empty with the exception of free standing shop displays and counters stacked close to the SSE wall. The flooring consisted of a modern wood effect laminated surface.

1st Floor

39. The 1st floor was accessed through a door at the WSW end of the NNW front elevation. The doorway led into a small entrance lobby with a blocked doorway (which presumably once led into the ground floor) and then another wooden door immediately to the SSE which led on to a stair (Figures 28a & 28b) which accessed the 1st floor. The stair treads were wooden and partly painted with a wooden handrail with cast iron fittings set into the WSW and SSE wall (Figure 30b) and a cast iron balustrade and newel posts with wooden handrail on the SSE edge up to the 2nd floor. A large window on the SSE wall of had what appeared to be an original frame and internal shutters.

40. Room 3 (Figure 29b) was rectangular in plan and was accessed from the stair through an opening in the SSE wall (the door having been removed). The walls consisted of painted lath and plaster, from which small sections had broken or crumbled off. The exception to this was the NNW wall and the ceiling where the lath and plaster surface had been completely removed exposing the squared rubble building fabric of the wall and the 2nd floor rafters and modern insulation material at ceiling level. In the NNW wall, there was a large sash and case window with original frame and internal shutters. There was a blocked fireplace set into the WSW wall (Figure 30a) which retained a plain painted wooden mantelpiece which may also have been original. The rest of the room was filled by modern detritus and refuse presumably left over from the print shop on the ground floor.
41. Room 2 (Figure 29a) was square in plan and was accessed from the stairwell through an opening in the WSW wall (the door having been removed). The walls consisted of painted lath and plaster, of which small sections had broken or crumbled off. The exception to this was, as in Room 3, the NNW wall where the lath and plaster surface had been completely removed exposing the wall material underneath and the 2nd floor rafters and insulation material at the ceiling. On the NNW wall was a large sash and case window with original window frame and internal shutters. A similar frame and internal shutters were noted on a large window on the SSE wall. There was a fireplace set into the ENE wall of the room which was blocked but still retained a plain painted wooden mantelpiece which again may have been original. The rest of the room was filled by modern detritus and refuse presumably left over from the print shop on the ground floor.

2nd Floor

42. Room 4 (Figures 31b & 32a) was L-shaped in plan and accessed through an opening in its WSW wall, the door having been removed. The room appeared to be a converted loft space, judging by the partially pitched nature of the ceiling. The ceiling and the upper portion of the walls consisted of painted lath and plaster. The lower part of the wall was covered with wooden panelling, some sections of which had been varnished while others appeared to have been sanded down. The flooring within the room comprised timber floorboards, some of which had been lifted. A small and a large skylight were set into the pitched NNW and SSE portions of the ceiling respectively. Close to where the stairwell was accessed, an early 20th century light switch survives *in situ* on the WSW wall. At the western end of the room a subdivision, 4b, had been created to form a small toilet. Much of the lath and plaster surfacing had been removed in this room, particularly on the NNW side, as well as most of the toilet fittings. A small skylight was also noted, set into the pitched roof within the room.
43. Room 5 (Figures 33a & 33b) was square in plan and accessed through an opening in the WSW wall. As with Room 4, the room appeared to be a converted loft space which was clear from the partially pitched nature of the ceiling. The ceiling and the upper part of the walls consisted of painted lath and plaster. Again, the lower part of the wall was covered with wooden panelling, some sections of which had been varnished while others appeared to have been sanded down. The flooring within the room comprised exposed timber floorboards some of which had been lifted. A large skylight was set into the SSE pitched part of the ceiling. The room contained what appeared to be early 20th century wooden fittings: a shelf (Figure 34a), a set of coat hooks fitted either side of the opening in the WSW wall and a wooden box set against the NNW wall (Figure 32b). Also close to the opening was a possibly early 20th century light switch (Figure 34b).

Discussion

44. The earliest historic mapping evidence for Brechin which shows the layout of the streets was Roy's Military Survey of 1747-52 which hints at the presence of buildings off Market Street and High Street. Wood's map of Brechin from 1823 clearly shows rows of houses in the location of 14-18 and 20a Swan Street which suggests that both were standing at that time, but it is unclear exactly when they were built so a late eighteenth century date for the core of the building with a later nineteenth century facade cannot be ruled out.

The former print works at 20 Swan Street was not shown on Wood's map but was depicted within the 1st edition Ordnance Survey map published in 1865 showing it to be a slightly later building.

45. The building survey revealed that each had undergone a number of both internal and external changes over the years. 20a Swan Street seemed to have undergone the most change to the overall fabric of the building with doorways either fully or partially blocked, walls removed and later (most likely twentieth century) walls and a staircase inserted. The former print works at 20 Swan Street showed little change on the outer fabric of the building with only some of the windows bricked up but the interior had been completely modernised with little evidence of its nineteenth century origins surviving. The ground floor within the building at 14-18 Swan Street had either been built from the outset as a shop with accommodation above or remodelled at some point (probably during the later 19th century). The entire front elevation may also have been remodelled at this time. Within this structure, some 1st floor windows and fireplaces appear to have been surviving original fixtures. The 2nd floor comprised attic space which may have been converted into additional accommodation at a later date: those fixtures which survive, which include a shelf, coat hooks and light switches would suggest that this work took place in the mid twentieth century.

Conclusion

46. A programme of archaeological works was required by Mr Aaron Souttar on behalf of J. W. Souttar Architectural Services and Building Construction in respect of the change of use for the former print works at 20 Swan Street to form 4 dwelling houses, the change of use from a store at 20a Swan Street to form 4 flatted dwellings, and the change of use from a store at 14-18 Swan Street to form a dwelling house at the Former Print Works. All are located off Black Bull Close, Brechin, DD9 6EF (NGR: NO 5974 6024) (Planning App: 15/00861/FULL). The structures were subject to a Level 1 Historic Building Recording and Photographic Survey exercise, in order to create a baseline record of the surviving elements to record them before development.
47. This Data Structure Report represents the findings of Historic Building Recording works required by Mr Aaron Souttar on behalf of J. W. Souttar Architectural Services and Building Construction. The historic building recording survey confirmed that each of the three buildings, dating from the eighteenth to nineteenth century, had undergone both external and internal changes, carried out from the late nineteenth century onwards. Most of the interior finishes within the three buildings had either been partially stripped down recently or were of clear mid- to late twentieth century origin.

Acknowledgements

48. The author would like to thank Aaron Souttar of J.W. Souttar Architectural Services and Building Construction for the opportunity to carry out the Historic Building Recording and Photographic Survey exercise at Black Bull Close. We would also like to thank Aberdeenshire Council Archaeology Service for their assistance throughout the project. We would also like to thank Dr Louise Turner Senior Archaeologist at Rathmell Archaeology for her help in the editing of this report.

References

Documentary

Gourlay, R and Turner, A, Historic Brechin; the archaeological implications of development, Scottish Burgh Survey 1977

HM Government, 1997, Planning (Listed Buildings and Conservation Areas) (Scotland) Act, HMSO

Historic Scotland, 2008, Scottish Historic Environment Policy

McKinstry, L. 2016, Black Bull Close, Brechin: Archaeological Evaluation, Written Scheme of Investigation.

Museum of London, 1994, Archaeological Site Manual

Museums and Galleries Commission, 1992, Standards in the Museum Care of Archaeological Collections

Scottish Government, 2008, Treasure Trove in Scotland: A code of Practice

Scottish Government, 2010, *Scottish Planning Policy*

Scottish Government, 2011, Planning Advice Note 2/2011: Planning & Archaeology

Sinclair, J.A. 2015. Engineers Report, Sinclair Associates

Cartographic

Gordon, R	1636-52	<i>A Map of Eastern Scotland, Including the Basins of River Don, Dee, Tay, Forth and Tweed</i>
Roy, W	1747-52	<i>Military Survey of Scotland (Highlands)</i>
Wood, J	1823	<i>Plan of the City of Brechin</i>
Ordnance Survey	1865	<i>25-inch 1st edition Ordnance Survey Forfar Sheet XXXVII.13</i>

Appendix 1: Discovery & Excavation in Scotland

LOCAL AUTHORITY:	Angus
PROJECT TITLE/SITE NAME:	Black Bull Close, Brechin
PROJECT CODE:	RA16024
PARISH:	Fern
NAME OF CONTRIBUTOR:	Liam McKinstry
NAME OF ORGANISATION:	Rathmell Archaeology Limited
TYPE(S) OF PROJECT:	Historic Building Recording
NMRS NO(S):	NO56SE 235 14-18 Swan Street, NO56SE 104 Black Bull Close
SITE/MONUMENT TYPE(S):	None
SIGNIFICANT FINDS:	None
NGR (2 letters, 6 figures)	NO 59750 60248
START DATE (this season)	12 th September 2016
END DATE (this season)	15 th September 2016
PREVIOUS WORK (incl. DES ref.)	None
MAIN (NARRATIVE) DESCRIPTION: (may include information from other fields)	<p>A programme of archaeological works was required by Mr Aaron Souttar on behalf of J. W. Souttar Architectural Services and Building Construction in respect of the change of use for the former print works at 20 Swan Street and the former stores at 20a Swan Street and 14-18 Swan Street respectively. All three structures, located off Black Bull Close, Brechin, were subject to a Level 1 Historic Building Recording and Photographic Survey in order to create a baseline record before development.</p> <p>The works confirmed that each of the three buildings, which ranged from late 18th to mid-19th century in date, had undergone both external and internal changes, most likely carried out from the late 19th century onwards. Most surviving interior finishes and fixtures were likely to have been mid- to late 20th century in origin, though some earlier fittings were noted at first floor level in 14-18 Swan Street.</p>
PROPOSED FUTURE WORK:	None
CAPTION(S) FOR ILLUSTRS:	None
SPONSOR OR FUNDING BODY:	Mr Aaron Souttar
ADDRESS OF MAIN CONTRIBUTOR:	Unit 8 Ashgrove Workshops, Kilwinning, Ayrshire KA13 6PU
E MAIL:	contact@rathmell-arch.co.uk
ARCHIVE LOCATION (intended/deposited)	Report to Aberdeenshire Council Archaeology Service and archive to National Monuments Record of Scotland.

Appendix 1: Photo Register

Photographic Register

Image No.	Print		Slide		Digital	Description	From	Date
	Film No.	Neg. No.	Film No.	Neg. No.				
001	-	-	-	-	IMG_7367	S facing Elevation of 20a Swan St., oblique	SW	12/09/16
002	-	-	-	-	IMG_7368	S facing Elevation of 20a Swan St., oblique	SW	12/09/16
003	-	-	-	-	IMG_7369	S facing Elevation of 20a Swan St., oblique	SE	12/09/16
004	-	-	-	-	IMG_7370	S facing Elevation of 20a Swan St., oblique	SE	12/09/16
005	-	-	-	-	IMG_7371	Close up view of S facing elevation of 20a Swan St. W end.	S	12/09/16
006	-	-	-	-	IMG_7372	Close up view of S facing elevation of 20a Swan St. Centre part 1.	S	12/09/16
007	-	-	-	-	IMG_7373	Close up view of S facing elevation of 20a Swan St. Centre part 2.	S	12/09/16
008	-	-	-	-	IMG_7374	Close up view of S facing elevation of 20a Swan St. E end.	S	12/09/16
009	-	-	-	-	IMG_7375	Close up view of W quoin stones, 20a Swan St.	SSE	12/09/16
010	-	-	-	-	IMG_7376	Close up of base/foundation stones of 20a Swan Street at the pavement, W end.	S	12/09/16
011	-	-	-	-	IMG_7377	Close up of Roof, W end, S facing, 20a Swan St.	S	12/09/16
012	-	-	-	-	IMG_7378	Close up of Roof, centre, S facing, 20a Swan St.	S	12/09/16
013	-	-	-	-	IMG_7379	Close up of Roof, E end, S facing, 20a Swan St.	S	12/09/16
014	-	-	-	-	IMG_7380	Close up view of E quoin stones, 20a Swan St.	SSE	12/09/16
015	-	-	-	-	IMG_7381	Close up of centre window, ground floor (originally a door now blocked up) of 20a Swan St.	S	12/09/16
016	-	-	-	-	IMG_7382	Close up of centre window floor (originally a door now blocked up) and remodelled part of the S facing elevation, ground floor of 20a Swan St.	S	12/09/16

Image No.	Print		Slide		Digital	Description	From	Date
	Film No.	Neg. No.	Film No.	Neg. No.				
017	-	-	-	-	IMG_7383	Close up of remodelled part of S facing elevation, ground floor, 20a Swan St.	S	12/09/16
018	-	-	-	-	IMG_7384	Door at W end of S facing elevation, ground floor, 20a Swan St.	S	12/09/16
019	-	-	-	-	IMG_7385	Door at E end of S facing elevation, ground floor, 20a Swan St.	S	12/09/16
020	-	-	-	-	IMG_7386	View of Room 1, ground floor, 20a Swan St.	ENE	12/09/16
021	-	-	-	-	IMG_7387	View of Room 1, ground floor, 20a Swan St.	WSW	12/09/16
022	-	-	-	-	IMG_7388	View of Room 1, ground floor, 20a Swan St.	S	12/09/16
023	-	-	-	-	IMG_7389	View of Room 1, ground floor, 20a Swan St.	E	12/09/16
024	-	-	-	-	IMG_7390	View of Room 1, ground floor, 20a Swan St.	E	12/09/16
025	-	-	-	-	IMG_7391	View of Room 1, ground floor, 20a Swan St.	W	12/09/16
026	-	-	-	-	IMG_7392	Close up of central window (Partially blocked up door), room 1, ground floor, 20a Swan St.	N	12/09/16
027	-	-	-	-	IMG_7393	Close up of fireplace, room 1, ground floor, 20a Swan St.	W	12/09/16
028	-	-	-	-	IMG_7394	Close up of remaining floor surface beneath temporary roof support, room 1, ground floor, 20a Swan St.	-	12/09/16
029	-	-	-	-	IMG_7395	Close up of two alcoves and remains of stairs to the 1 st floor, room 1, ground floor, 20a Swan St.	SW	12/09/16
030	-	-	-	-	IMG_7396	View of Rooms 2 and 3, ground floor, 20a Swan St.	ENE	12/09/16
031	-	-	-	-	IMG_7397	View of 1 st floor from the ground floor.	E	12/09/16
032	-	-	-	-	IMG_7398	View of door into Liddle's Close within room 3, ground floor 20a Swan St.	S	12/09/16
033	-	-	-	-	IMG_7399	View of Room 3, ground floor, 20a Swan St.	ENE	12/09/16
034	-	-	-	-	IMG_7400	View of Room 3, ground floor, 20a Swan St.	E	12/09/16

Image No.	Print		Slide		Digital	Description	From	Date
	Film No.	Neg. No.	Film No.	Neg. No.				
035	-	-	-	-	IMG_7401	N facing Elevation of 20a Swan St.	NNE	12/09/16
036	-	-	-	-	IMG_7402	N facing Elevation of 20a Swan St., oblique	WNW	12/09/16
037	-	-	-	-	IMG_7403	View of N facing elevation of 20a Swan St. from Liddle's Close.	N	12/09/16
038	-	-	-	-	IMG_7404	View of N facing elevation of 20a Swan St. and E facing elevation of 20 Swan St (Printworks). from Liddle's Close.	ESE	12/09/16
039	-	-	-	-	IMG_7405	View of S facing elevation of 20 Swan St (Printworks) from Liddle's Close.	WSW	12/09/16
040	-	-	-	-	IMG_7406	View of S facing elevation of 20 Swan St (Printworks) from Liddle's Close.	WSW	12/09/16
041	-	-	-	-	IMG_7407	View of S facing elevation (upper floor) of 20 Swan St (Printworks) from Liddle's Close.	SW	12/09/16
042	-	-	-	-	IMG_7408	View of W facing elevation (upper floor) of 20 Swan St (Printworks) from Liddle's Close.	SW	12/09/16
043	-	-	-	-	IMG_7409	Close up of double doors and blocked up window, ground floor, 20 Swan St. (Printworks).	SW	12/09/16
044	-	-	-	-	IMG_7410	Close up of window with iron hinges, W end, ground floor, 20 Swan St. (Printworks)	S	12/09/16
045	-	-	-	-	IMG_7411	View of E facing elevation of 20 Swan St (Printworks) from Liddle's Close.	SSE	12/09/16
046	-	-	-	-	IMG_7412	View of N facing elevation of 20 Swan St (Printworks) from Liddle's Close.	ENE	12/09/16
047	-	-	-	-	IMG_7413	View of N facing elevation of 20 Swan St (Printworks) from Liddle's Close.	WNW	12/09/16
048	-	-	-	-	IMG_7414	View of N facing elevation of 20 Swan St (Printworks) from Liddle's Close.	WNW	12/09/16

Image No.	Print		Slide		Digital	Description	From	Date
	Film No.	Neg. No.	Film No.	Neg. No.				
049	-	-	-	-	IMG_7415	Close up of roof and metal air duct, 20 Swan St. (Printworks)	N	12/09/16
050	-	-	-	-	IMG_7416	Close up of door, N elevation, W end, 20 Swan St. (Printworks)	N	12/09/16
051					IMG_7417	Close up of shuttered window, N elevation, Centre, 20 Swan St. (Printworks)	N	12/09/16
052					IMG_7418	Close up of door, N elevation, E end, 20 Swan St. (Printworks)	NW	12/09/16
053					IMG_7419	Room 1a, ground floor, 20 Swan St. (Printworks)	S	12/09/16
054					IMG_7420	Room 1a, ground floor, 20 Swan St. (Printworks)	SSW	12/09/16
055					IMG_7421	Close up of roof beams (possibly original) and modern ceiling tiles, room 1a, 20 Swan St. (Printworks)	ENE	12/09/16
056					IMG_7422	View of SW corner of room 1a showing sink area and small skylight in ceiling, 20 Swan St. (Printworks)	NE	12/09/16
057					IMG_7423	View of room 1b with door into Liddle's Close in the background, 20 Swan St. (Printworks)	S	12/09/16
058					IMG_7424	View of stairs down to the basement at the N end of room 1b, 20 Swan St. (Printworks)	W	12/09/16
059					IMG_7425	View of room 2a, basement, 20 Swan St. (Printworks)	W	12/09/16
060					IMG_7426	View of room 2b, basement, 20 Swan St. (Printworks)	W	12/09/16
061					IMG_7427	View of room 2c, basement, 20 Swan St. (Printworks)	W	12/09/16
062					IMG_7428	View of room 3a, basement, 20 Swan St. (Printworks)	W	12/09/16
063					IMG_7429	View of room 3b, basement, 20 Swan St. (Printworks)	N	12/09/16
064					IMG_7430	View of room 3c, basement, 20 Swan St. (Printworks)	N	12/09/16
065					IMG_7431	View of room 3d, basement, 20 Swan St. (Printworks)	N	12/09/16
066					IMG_7432	View of room 2 and 3 through the openings, basement, 20 Swan	N	12/09/16

Image No.	Print		Slide		Digital	Description	From	Date
	Film No.	Neg. No.	Film No.	Neg. No.				
						St. (Printworks)		
067					IMG_7433	Bottom of stairwell to the ground floor, basement, 20 Swan St. (Printworks)	E	12/09/16
068					IMG_7434	View of opening in the ceiling near stairwell showing floor joists and wiring, basement, 20 Swan St. (Printworks)	W	12/09/16
069					IMG_7435	View of floor surface within room 2, basement, 20 Swan St. (Printworks)	W	12/09/16
070					IMG_7436	View of N facing elevation of 20 Swan St (Printworks) from Liddle's Close.	-	12/09/16
071					IMG_7437	View of N facing elevation of 20a Swan St. from Liddle's Close.	-	12/09/16
072					IMG_7438	View of S facing elevation of 20 Swan St (Printworks) from Liddle's Close.	-	12/09/16
073					IMG_7439	View of Room 4, ground floor, 20a Swan St.	WSW	12/09/16
074					IMG_7440	View of Room 4, ground floor, 20a Swan St.	ENE	12/09/16
075					IMG_7441	Close up view of fireplace on W wall, room 4, ground floor, 20a Swan St.	ENE	12/09/16
076					IMG_7442	Close up view of fireplace on E wall, room 4, ground floor, 20a Swan St.	W	12/09/16
077					IMG_7443	Close up view of blocked doorway on E wall, room 4, ground floor, 20a Swan St.	SW	12/09/16
078					IMG_7444	Close up view of ceiling plaster and roof joists/supports, room 4, ground floor, 20a Swan St.	ENE	12/09/16
079					IMG_7445	Close up view of concrete and stone slabs floor surface, room 4, ground floor, 20a Swan St.	W	12/09/16
080					IMG_7446	Close up view of boarded up window on S wall, W end, room 4,	N	12/09/16

Image No.	Print		Slide		Digital	Description	From	Date
	Film No.	Neg. No.	Film No.	Neg. No.				
						ground floor, 20a Swan St.		
081					IMG_7447	Close up view of ceiling beam/joist, room 4, ground floor, 20a Swan St.	ESE	12/09/16
082					IMG_7448	Close up view of door onto Swan St. window at W end, room 4, ground floor, 20a Swan St.	ENE	12/09/16
083					IMG_7449	S facing Elevation of 20a Swan St., oblique	SE	12/09/16
084					IMG_7450	S facing Elevation of 20a Swan St., oblique	SW	12/09/16
085					IMG_7451	S facing Elevation of 20a Swan St., oblique	WSW	12/09/16
086					IMG_7452	N facing Elevation of 14-18 Swan St., oblique	NW	12/09/16
087					IMG_7453	N facing Elevation of 14-18 Swan St., oblique	N	12/09/16
088					IMG_7454	View of Liddle's Close from the High St. N part.	WSW	12/09/16
089					IMG_7455	View of Liddle's Close from the High St. S part.	WSW	12/09/16
090					IMG_7456	View of Liddle's Close from the High St. S part.	WSW	12/09/16
091					IMG_7457	View of Black Bull Close from the High St.	WSW	12/09/16
092					IMG_7458	View of room 1, ground floor, 14-18 Swan St.	E	12/09/16
093					IMG_7459	View of room 1, ground floor, 14-18 Swan St.	W	12/09/16
094					IMG_7460	View of room 1, ground floor, 14-18 Swan St. SSW corner.	E	12/09/16
095					IMG_7461	View of window in S wall (W side), room 1, ground floor, 14-18 Swan St.	N	12/09/16
096					IMG_7462	View of door and glass frontage (N side), room 1, ground floor, 14-18 Swan St.	E	12/09/16
097					IMG_7463	View of laminated flooring, room 1, ground floor, 14-18 Swan St.	E	12/09/16
098					IMG_7464	View of modern ceiling tiles and lighting, room 1, ground floor, 14-	E	12/09/16

Image No.	Print		Slide		Digital	Description	From	Date
	Film No.	Neg. No.	Film No.	Neg. No.				
						18 Swan St.		
099					IMG_7465	View of staircase up to 1 st floor, ground floor, 14-18 Swan St.	N	12/09/16
100					IMG_7466	View of internal walling at bottom of staircase, ground floor, 14-18 Swan St.	N	12/09/16
101					IMG_7467	View of staircase from 1 st floor to ground floor, 14-18 Swan St.	SSE	12/09/16
102					IMG_7468	View of room 2, 1 st floor, 14-18 Swan St.	W	12/09/16
103					IMG_7469	Close up of boarded up fireplace in E wall, room 2, 1 st floor, 14-18 Swan St.	W	12/09/16
104					IMG_7470	Close up of boarded up window in S wall, room 2, 1 st floor, 14-18 Swan St.	N	12/09/16
105					IMG_7471	View of room 3, 1 st floor, 14-18 Swan St.	E	12/09/16
106					IMG_7472	Close up of boarded up fireplace in W wall, room 3, 1 st floor, 14-18 Swan St.	E	12/09/16
107					IMG_7473	Close up view of ceiling, room 2, 1 st floor, 14-18 Swan St.	W	12/09/16
108					IMG_7474	Close up of boarded up fireplace and walling in W wall, room 3, 1 st floor, 14-18 Swan St.	E	12/09/16
109					IMG_7475	Staircase up to 2 nd floor from 1 st floor, 14-18 Swan St.	E	12/09/16
110					IMG_7476	Staircase up to 2 nd floor from 1 st floor, 14-18 Swan St.	E	12/09/16
111					IMG_7477	View of room 4b (toilet), 2 nd floor, 14-18 Swan St.	S	12/09/16
112					IMG_7478	Staircase from 2 nd floor to the 1 st floor, 14-18 Swan St.	NNW	12/09/16
113					IMG_7479	View of room 4a, 2 nd floor, 14-18 Swan St.	NNW	12/09/16
114					IMG_7480	View of room 4a, 2 nd floor, 14-18 Swan St.	SSE	12/09/16
115					IMG_7481	Fitted box and painted 'No. 50' within room 5, 2 nd floor, 14-18	S	12/09/16

Image No.	Print		Slide		Digital	Description	From	Date
	Film No.	Neg. No.	Film No.	Neg. No.				
						Swan St.		
116					IMG_7482	View of room 5, 2 nd floor, 14-18 Swan St.	WSW	12/09/16
117					IMG_7483	View of room 5, 2 nd floor, 14-18 Swan St.	WNW	12/09/16
118					IMG_7484	Fitted shelf and light switch (original early 20 th century feature) in W wall, room 5, 2 nd floor, 14-18 Swan St.	NE	12/09/16
119					IMG_7485	Close up of light switch room 5, 14-18 Swan St.	WNW	12/09/16
120					IMG_7486	Fitted wooden panel with coat hooks, W wall, room 5 (original 20 th century feature), 14-18 Swan St.	ESE	12/09/16
121					IMG_7487	Close up of light switch, W wall, room 4a, 14-18 Swan St.	E	12/09/16
122					IMG_7488	S facing Elevation of 14-18 Swan St., oblique	E	12/09/16
123					IMG_7489	S facing Elevation of 14-18 Swan St., oblique	SW	12/09/16
124					IMG_7490	View of Room 5, 1 st floor, 20a Swan St.	E	12/09/16
125					IMG_7491	View of Room 5, 1 st floor, 20a Swan St.	ENE	15/09/16
126					IMG_7492	View of window on N wall, room 5, 1 st floor, 20a Swan St.	S	15/09/16
127					IMG_7493	View of Room 5, 1 st floor, 20a Swan St.	SW	15/09/16
128					IMG_7494	View of Room 5, 1 st floor, 20a Swan St.	WSW	15/09/16
129					IMG_7495	View of Room 5, 1 st floor, 20a Swan St.	W	15/09/16
130					IMG_7496	View of Room 5, 1 st floor, 20a Swan St.	W	15/09/16
131					IMG_7497	View of window on S wall, W end, room 5, 1 st floor, 20a Swan St.	N	15/09/16
132					IMG_7498	View of Room 5, 1 st floor, 20a Swan St.	W	15/09/16
133					IMG_7499	View of window on S wall, W end, room 5, 1 st floor, 20a Swan St.	N	15/09/16
134					IMG_7500	View of window on N wall, room 5, 1 st floor, 20a Swan St.	S	15/09/16

Image No.	Print		Slide		Digital	Description	From	Date
	Film No.	Neg. No.	Film No.	Neg. No.				
135					IMG_7501	Close up of roof beams/joists, room 5, 1 st floor, 20a Swan St.	E	15/09/16
136					IMG_7502	Close up of blocked up fireplace in E wall, room 5, 1 st floor, 20a Swan St.	WSW	15/09/16
137					IMG_7503	View of Room 5, 1 st floor, 20a Swan St.	E	15/09/16
138					IMG_7504	View of Room 5, 1 st floor, 20a Swan St.	ENE	15/09/16
139					IMG_7505	Close up of blocked up fireplace in ENE wall, room 6, 1 st floor, 20a Swan St.	WSW	15/09/16
140					IMG_7506	Close up of Skylights in N ceiling, room 6, 1 st floor, 20a Swan St.	S	15/09/16
141					IMG_7507	Close up of roof boarded up fireplace in WSW wall, room 6, 1 st floor, 20a Swan St.	W	15/09/16
142					IMG_7508	View of opening between rooms 5 and 6 and fireplace in W wall, 1 st floor, 20a Swan St.	E	15/09/16
143					IMG_7509	View of opening between rooms 5 and 6 and fireplace in W wall, 1 st floor, 20a Swan St.	E	15/09/16
144					IMG_7510	View of windows in S wall, W end, room 6, 20a Swan St.	NNE	15/09/16
145					IMG_7511	View of windows in S wall, W end, room 6, 1 st floor, 20a Swan St.	NNE	15/09/16
146					IMG_7512	Blocked up alcove or window, room 6, 1 st floor, 20a Swan St.	SE	15/09/16
147					IMG_7513	View of opening between rooms 5 and 6 from room 6, 1 st floor, 20a Swan St.	ENE	15/09/16
148					IMG_7514	Close up of blocked up fireplace in W wall, room 6, 1 st floor, 20a Swan St.	ESE	15/09/16
149					IMG_7515	Close up of boarded up fireplace in E wall, room 6, 1 st floor, 20a Swan St.	WNW	15/09/16
150					IMG_7516	Close up of boarded up window in S wall (E end), room 6, 1 st floor, 20a Swan St.	WNW	15/09/16

Image No.	Print		Slide		Digital	Description	From	Date
	Film No.	Neg. No.	Film No.	Neg. No.				
151					IMG_7517	Close up of window in S wall (centre), room 6, 1 st floor, 20a Swan St.	WNW	15/09/16
152					IMG_7518	Close up of skylight on NNW ceiling (above staircase), room 5, 1 st floor, 20a Swan St.	S	15/09/16
153					IMG_7519	Close up of Skylights in NNW ceiling, room 6, 1 st floor, 20a Swan St.	S	15/09/16
154					IMG_7520	Close up of Skylights in NNW ceiling, room 6, 1 st floor, 20a Swan St.	S	15/09/16
155					IMG_7521	Window directly opposite opening between rooms 5 and 6, 1 st floor, 20a Swan St.	WNW	15/09/16
156					IMG_7522	Window directly opposite opening between rooms 5 and 6 and room 5 windows, 1 st floor, 20a Swan St.	WNW	15/09/16
157					IMG_7523	Possible boarded up opening in floor of room 6 for staircase, 1 st floor, 20a Swan St.	WNW	15/09/16
158					IMG_7524	Possible boarded up opening in floor of room 6 for staircase, 1 st floor, 20a Swan St.	WNE	15/09/16
159					IMG_7525	Dormer window within N wall/ceiling, room 6, 1 st floor, 20a Swan St.	S	15/09/16
160					IMG_7526	Close up of Skylight in N ceiling, room 6, 1 st floor, 20a Swan St.	S	15/09/16
161					IMG_7527	Possible boarded up opening in floor of room 6 for staircase, 1 st floor, 20a Swan St.	SW	15/09/16
162					IMG_7528	Possible boarded up opening in floor of room 6 for staircase, 1 st floor, 20a Swan St.	SW	15/09/16
163					IMG_7529	Old fuse box on S wall, room 5, 1 st floor, 20a Swan St.	N	15/09/16
164					IMG_7530	Roofing and skylight in N wall/ceiling, room 6, 1 st floor, 20a	SW	15/09/16

Image No.	Print		Slide		Digital	Description	From	Date
	Film No.	Neg. No.	Film No.	Neg. No.				
165					IMG_7531	Roofing, room 6, 1 st floor, 20a	WSW	15/09/16
166					IMG_7532	Stone walling, N wall, room 5, 1 st floor, 20a Swan St.	S	15/09/16
167					IMG_7533	Close up of small fireplace in N wall, W end, room 5, 1 st floor, 20a Swan St.	SSE	15/09/16
168					IMG_7534	Brick walling, W wall, room 5, 1 st floor, 20a Swan St.	ESE	15/09/16
169					IMG_7535	Stone walling, N wall, room 5, 1 st floor, 20a Swan St.	SE	15/09/16
170					IMG_7536	Plaster /paint and exposed stone on S wall, centre, 1 st floor, 20a Swan St.	NNW	15/09/16
171					IMG_7537	Plaster /paint and exposed brick on N wall (near staircase), centre, 1 st floor, 20a Swan St.	S	15/09/16
172					IMG_7538	View of roof timbers at W end of Room 5 (Hipped Roof), 1 st floor, Swan St.	SE	15/09/16
173					IMG_7539	Area 3 excavated area.	N	15/09/16
174					IMG_7540	Area 2 excavated area.	N	15/09/16
175					IMG_7541	Area 2 excavated area.	N	15/09/16
176					IMG_7542	Area 2 excavated area.	W	15/09/16
177					IMG_7543	Area 1 excavated area.	N	15/09/16
178					IMG_7544	Area 1 excavated area.	W	15/09/16
179								
180								
181								

Contact Details

51. Rathmell Archaeology can be contacted at our Registered Office or through the web:
Ayrshire Office:
Rathmell Archaeology Ltd www.rathmell-arch.co.uk
Unit 8 Ashgrove Workshops
Kilwinning t.: 01294 542848
Ayrshire f.: 01294 542849
KA13 6PU e.: contact@rathmell-arch.co.uk
52. Dundee Office:
Rathmell Archaeology Ltd www.rathmell-arch.co.uk
North Tay Office Centre
48 Loons Road t.: 01382 339277
Dundee m.: 07827 913796
DD3 6AP e.: peter.klemen@rathmell-arch.co.uk
53. The Aberdeenshire Council Archaeology Service can be contacted at their office or through the web:
Archaeology Service www.aberdeenshire.gov.uk
Aberdeenshire Council IS
Woodhill House t.: 01224 664221
Westburn House
Aberdeen
AB16 5GB e.: archaeology@aberdeenshire.gov.uk

End of Document