

# **Huntly Flood Alleviation Scheme, Aberdeenshire: Archaeological Mitigation**

## **Data Structure Report**



by Callum Allsop

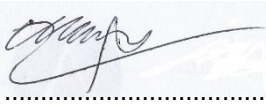
issued 21<sup>st</sup> March 2017

on behalf of Aberdeenshire Council

**RATHMELL**   
ARCHAEOLOGY LTD

## Quality Assurance

This report covers works which have been undertaken in keeping with the issued brief as modified by the agreed programme of works. The report has been prepared in keeping with the guidance of Rathmell Archaeology Limited on the preparation of reports. All works reported on within this document have been undertaken in keeping with the Chartered Institute for Archaeologists' Standards and Policy Statements and Code of Conduct.

Signed 

Date .....21<sup>st</sup> March 2017....

In keeping with the procedure of Rathmell Archaeology Limited this document and its findings have been reviewed and agreed by an appropriate colleague:

Checked  .....

Date .....21<sup>st</sup> March 2017....

Copyright Rathmell Archaeology Limited. All rights reserved.

No part of this report may be copied or reproduced by any means without prior written permission from Rathmell Archaeology Limited. If you have received this report in error, please destroy all copies in your possession or control and notify Rathmell Archaeology Limited.

This report has been prepared for the exclusive use of the commissioning party and unless otherwise agreed in writing by Rathmell Archaeology Limited, no other party may use, make use of or rely on the contents of the report. No liability is accepted by Rathmell Archaeology Limited for any use of this report, other than the purposes for which it was originally prepared and provided.

Opinions and information provided in the report are on the basis of Rathmell Archaeology Limited using due skill, care and diligence in preparation of the same and no explicit warranty is provided as to their accuracy. It should be noted and it is expressly stated that no independent verification of any of the documents or information supplied to Rathmell Archaeology Limited has been made.

## Quality Assurance Data

Author(s)	Callum Allsop		
Date of Issue	2016	Version	1.0
Commissioning	Aberdeenshire Council		
Event Name	Huntly Flood Prevention Scheme, Aberdeenshire		
Event Type	Watching Brief		
Event Date(s)	17/10/2016 to 16/10/2017		
Rathmell Code	RA16019	OASIS Ref	rathmell1-265895
Location	United Kingdom: Scotland: Aberdeenshire		
NGR	NJ 52314 40635 (centred)	Parish	Huntly
Designation(s)	None		
Canmore IDs	None		

## Contents

<b>Introduction .....</b>	<b>4</b>
<b>Historical and Archaeological Background .....</b>	<b>4</b>
<b>Project Works.....</b>	<b>4</b>
<b>Findings.....</b>	<b>7</b>
Area 1.....	7
Area 2.....	7
<b>Discussion .....</b>	<b>8</b>
<b>Recommendations .....</b>	<b>18</b>
<b>Conclusion .....</b>	<b>18</b>
<b>References .....</b>	<b>18</b>
Documentary .....	18
<b>Appendix 1: Discovery &amp; Excavation in Scotland .....</b>	<b>19</b>
<b>Appendix 2: Registers.....</b>	<b>20</b>
Context Register.....	20
Photographic Register .....	21
<b>Contact Details .....</b>	<b>31</b>

## Figures

Figure 1: Plan of proposed works.....	5
Figure 2: Plan of monitored works.....	6
Figure 3b: AREA1: Surface Water Sewer, north facing section at east end .....	9
Figure 4a: AREA 1: Surface Water Sewer, working shot at east end .....	10
Figure 4b: AREA 1: Filter Drain, Test Pit 1 west facing section .....	10
Figure 5a: AREA 1: Bund 2, post-excavation of central section of east area .....	11
Figure 5b: AREA 2: Site Compound, working shot.....	11
Figure 6a: AREA 2: Access Road, working shot of gravel extraction.....	12
Figure 6b: AREA 2: Access Road, west facing section of gravel extraction.....	12
Figure 7a: AREA 2: Bund 3, post-excavation of strip.....	13
Figure 7b: AREA 2: Bund 4, working shot of western trench excavation .....	13
Figure 8a: AREA 2: Bund 4, east facing section of western trench excavation .....	14
Figure 8b: AREA 2: Bund 4, east facing section of feature [007] .....	14
Figure 9a: AREA 2: Bund 4, post-excavation of feature (009) .....	15
Figure 9b: AREA 2: Bund 4 Access, south facing section of [010].....	15
Figure 10a: AREA 2: Bund 5, location shot .....	16

Figure 10b: AREA 2: Bund 6, location shot .....	16
Figure 11a: AREA 2: Bund 7, west end.....	17
Figure 11b: AREA 2: Bund 7, central area with BT cable running north-south .....	17

## Introduction

1. This Data Structure Report has been prepared for Infrastructure Services, Aberdeenshire Council in support of the Huntly Flood Alleviation Scheme to meet Condition 7 of the granted planning consent (Planning App: APP/2012/0178) on land to the north and west of Huntly, Aberdeenshire.
2. The archaeological works were designed to mitigate the impact on any archaeological remains within the development area to the agreement of Aberdeenshire Council Archaeology Service. Rathmell Archaeology Limited was been appointed by Infrastructure Services, Aberdeenshire Council to undertake the implementation of archaeological mitigation works.
3. Aberdeenshire Council Archaeology Service specified that the developer shall secure the implementation of an archaeological watching brief on any groundbreaking and development work following a 'Watching-brief' Condition (PAN 2/2011, SPP, SHEP). They provided guidance on the structure of archaeological works required on this site during development through their *Scope and Framework* document. All works and reporting complied with Aberdeenshire Council Archaeology Services *Standard for Archaeological Fieldwork*.
4. A Written Scheme of Investigation (Rees 2016) provided the detail of the works (archaeological monitoring, exclusion, excavation, post-excavation analyses and publication) for the mitigation pertaining to ground breaking within the development area and hence the direct physical impact on buried sediments.
5. This Data Structure Report provides the results of the works (monitoring, exclusion, excavation, post-excavation analyses and publication) for the mitigation pertaining to ground breaking and hence the direct physical impact on buried sediments.

## Historical and Archaeological Background

6. The proposed development area is located to the north and west of Huntly and to the south of the course of River Deveron (centred on NGR NJ 52314 40635). The works comprised excavation of areas for compounds, drainage, bunds and embankments for the defence of Huntly against future flooding (see Figure 1).
7. The underlying bedrock is an igneous type, consisting of Orthopyroxene-gabbro and Clinopyroxene-norite, that is referred to as Huntly-Knock Pluton and formed approximately 444 to 488 million years ago in the Ordovician Period with superficial Alluvium Deposits of gravels, sands, silt and clay that formed up to 2 million years ago in the Quaternary Period indicating that the local environment was dominated by rivers (British Geological Society, Geology of Britain Viewer).
8. An Archaeological Desk Based Assessment established a baseline of the historic environment for the area to be impacted by the scheme. This was carried out in January 2012 by Atkins. Access to and cognisance of this report is assumed within this Data Structure Report.
9. The baseline identified a broad range of archaeological sites within the surrounding landscape ranging from prehistory to modern. No archaeological sites and no designated historic environment assets were identified within the footprint of the development. However, a potential for currently unknown archaeological sites to be present was identified.

## Project Works

10. The programme of monitoring works was undertaken on several site visits which took place over the period from 17<sup>th</sup> October 2016 to 16<sup>th</sup> March 2017 and was agreed to the programme of mitigation works that comprised the following key components:

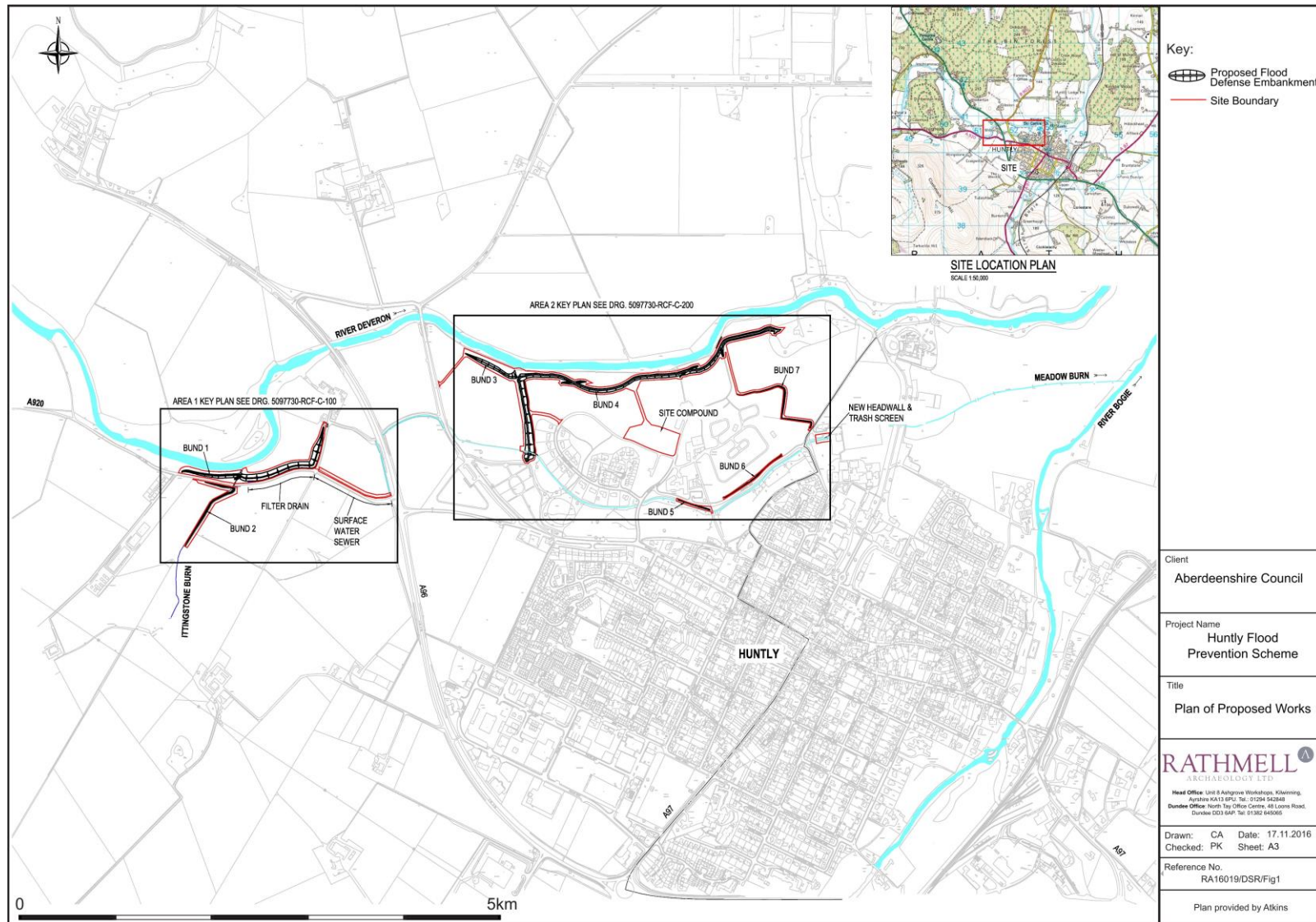


Figure 1: Plan of proposed works



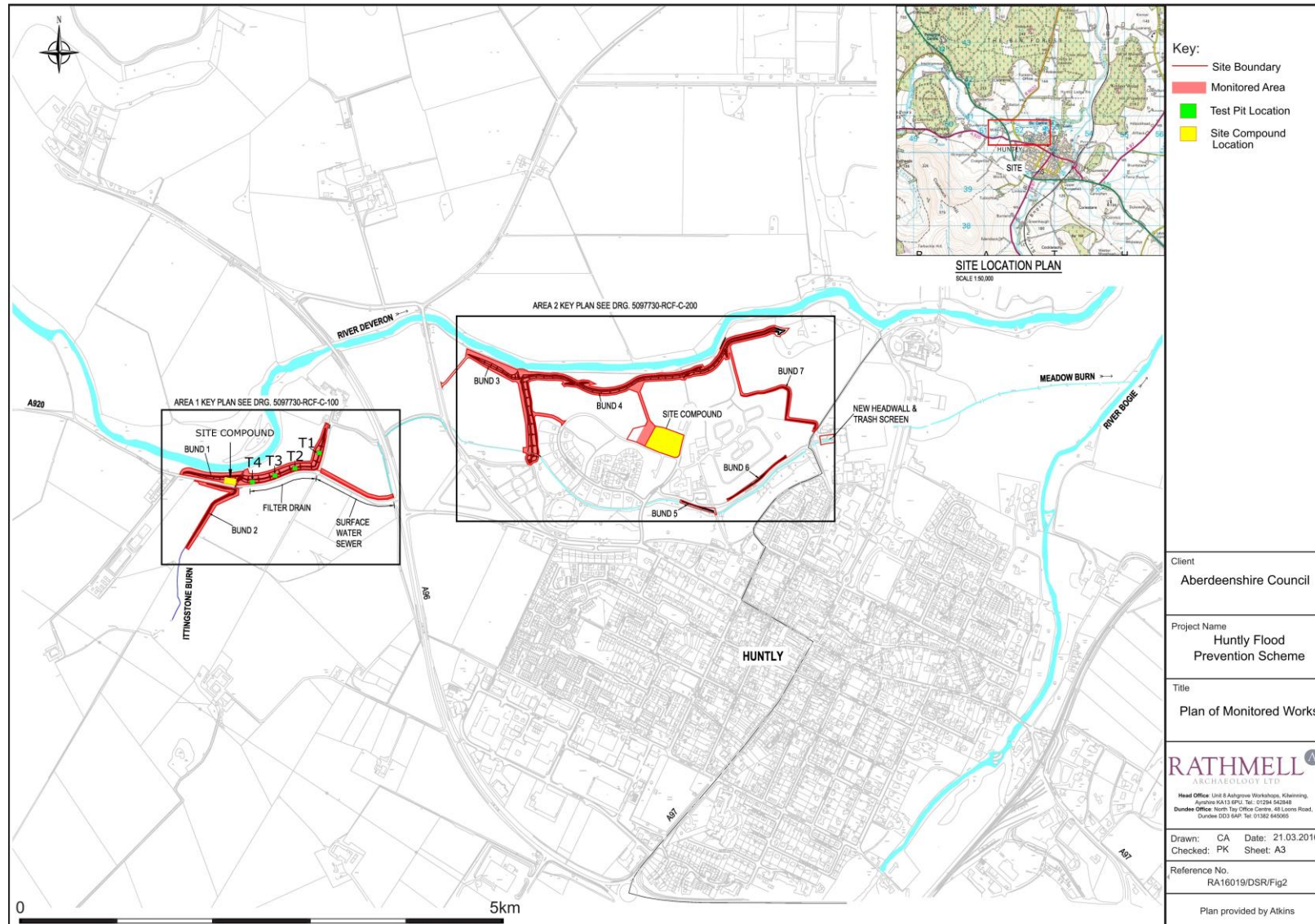


Figure 2: Plan of monitored works

- a. undertake a continuous archaeological watching brief on appropriate ground breaking works in a manner that will expose any significant archaeological horizons with care.
  - b. the production of a report which integrates the findings of the works (watching brief) through a Data Structure Report, detailing the nature, form and extent of the monitored areas.
11. Any potentially significant archaeological features, structures or deposits encountered were recorded by the archaeologist on site, using Rathmell Archaeology Ltd standard methods. All contexts, small finds and environmental samples were given unique numbers with bulk finds collected by context.
  12. All works complied with Aberdeenshire Council Archaeological Services *Standard for Archaeological Fieldwork*, the Chartered Institute for Archaeologists' Standards and Policy Statements and Code of Conduct and Historic Environment Scotland Policy Statement.

## Findings

13. For the purposes of this project, the findings of the monitoring works will be separated on an area-by-area basis specified in the site plan (Figure 2). All works were conducted by either a thirteen tonne or twenty tonne tracked mechanical excavator.

### Area 1

14. Stripping for a small site compound in Area 1 at the eastern extent of Bund 1 comprised of stripping a 48m<sup>2</sup> area (Figure 3a). Stripping here was to a depth of 200mm and a single deposit was uncovered comprising loose, mid-brown loam with infrequent small sub-rounded and sub-angular stones, rooting, and modern white ceramics and glass (001).
15. Works for the Surface Water Sewer comprised excavating a 600mm wide pipe trench with 12m<sup>2</sup> manhole access areas at regular intervals. Due to working depths for laying the pipe occurring over 1.25m the surrounding area around the pipe trench had to be stepped resulting in a 4.5m wide trench.
16. This width of trench was monitored along the majority of the route and deposits (002); a firm, mid-brown silty clay with very infrequent medium sub-rounded stones, and (003); a very firm, grey clay with iron panning and very infrequent large sub-rounded boulders, were uncovered at depths of 350-400mm and 600-650mm respectively (Figure 3b). A further deposit comprising wet, dark bluish grey clay with frequent very small stones and gravels was also encountered at the base of the trench (004) (Figure 4a).
17. Along the course of the Filter Drain, four test pits were excavated to evaluate ground conditions prior to excavation. These test pits were excavated to a depth of 600-750mm deep and two deposits were encountered; (002) at a depth of 500-600mm and (003) (Figure 4b). Excavation for the filter drain did not uncover any different deposits than those encountered within the test pits.
18. Bunds 1 and 2 comprised the construction of a new bund over the course of the Filter Drain and either side of the Ittingstone Burn respectively, and comprised a topsoil strip 4-5m wide to a depth of 300mm. Only (002) was recorded during the monitoring of these works (Figure 5a).

### Area 2

19. Monitoring of the Site Compound within Area 2 consisted of stripping a 60m<sup>2</sup> area on marshland with reeds and weeds over 1m in height. Stripping here was to a depth of 200mm and a single deposit was encountered comprising loose, mid-brown loam with infrequent small sub-rounded and sub-angular stones, rooting, and modern white ceramics and glass (001) (Figure 5b). A test pit was excavated within this area to determine the depth of this deposit which was found at 400mm.



20. A 10m wide area running from the west of the Site Compound northwards to Bund 4 was stripped to form an access track. Works comprised stripping topsoil to a depth of 300mm and extraction of underlying gravels to use in the construction of the road (Figure 6a). Three deposits were encountered during monitoring that comprised (001) at a depth of 300mm, a firm, mid-brown silty clay with infrequent small to medium sub-rounded stones and rooting (005) 500mm deep and loose, grey sandy gravels with very frequent small to medium rounded stones (006) (Figure 6b).
21. An approximate area measuring 150m long by 8m wide was stripped to a depth of 300mm for the construction of a new bund at Bund 3 (Figure 7a). A single deposit was encountered during the strip; a loose, mid-brown loam with infrequent small sub-rounded and sub-angular stones, rooting, and modern white ceramics and glass 400mm deep (001). Some late 19<sup>th</sup> to early 20<sup>th</sup> century ceramics were identified within this deposit but were not retained.
22. Works for Bund 4 consisted of a 300mm strip alongside and on the existing bund, and a trench 1m deep and 1.5m wide running along the base of the bund (Figure 7b). Throughout the works the main stratigraphic sequence comprised loose, mid-brown loam with infrequent small sub-rounded and sub-angular stones, rooting, and modern white ceramics and glass 400mm deep (001) overlying a firm, mid-brown silty clay with infrequent small to medium sub-rounded stones and rooting 500mm thick (005) with an underlying deposit (006) of loose, grey sandy gravels with very frequent small to medium rounded stones (Figure 8a).
23. During the strip in the western part of Bund 4 two features were identified cutting in to the topsoil (001); [007] was a sub-square cut with gentle to steeply sloping sides and an uneven base measuring 2.2m long, 1.8m wide and 0.4m deep. This was filled with loose, mottled yellow sand and topsoil (001) with very infrequent small to medium sub-rounded stones and rooting (008) 400mm thick (Figure 8b).
24. The other feature (009) was a linear deposit running north to south comprising loose, light brown/orange gravel (Figure 9a). Stripping for the access to the southern area of Bund 4 revealed another feature cutting in to the topsoil (001); [010] was a sub-square cut with straight edges, rounded corners, shallow sloping sides, and slightly concave base that was filled with loose, black humic loam with frequent charcoal and small to medium sub-angular and sub-rounded stones (011) (Figure 9b).
25. After agreement with Aberdeenshire Council Archaeological Service, Bunds 5 & 6 were not monitored due to their proximity with the modern road and the likelihood that any possible archaeological resource had been disturbed by this (Figures 10a and 10b).
26. Bund 7 was aligned west-east for the first approximately 110m where it then changed course and ran south for approximately 70m and then changed alignment to run in an easterly direction for the rest of its length. An approximate area measuring 260m long by ranging in width from 1.5m to 5m was stripped to a depth of 300mm for the construction of a new bund at Bund 7 (Figures 11a & 11b).
27. A single deposit was encountered during the strip which consisted of a moderately compacted, mid-brown clayey silt with infrequent small sub-rounded and sub-angular stones, and grass roots in the upper 100mm (001). Some late 19<sup>th</sup> to early 20<sup>th</sup> century ceramics were identified within this deposit but were not retained. An unknown modern British Telecom cable was found running north-south (Figure 11b) through the middle area of the bund route. No other features were recorded.

## Discussion

28. The Archaeological Desk Based Assessment by Atkins (2017) identified a broad range of archaeological sites within the surrounding landscape ranging from prehistoric to modern. However during each stage of monitoring works no significant archaeological features were uncovered.



Figure 3a: AREA 1: Bund 1 Compound, working shot of area stripping



Figure 3b: AREA1: Surface Water Sewer, north facing section at east end





Figure 4a: AREA 1: Surface Water Sewer, working shot at east end



Figure 4b: AREA 1: Filter Drain, Test Pit 1 west facing section





Figure 5a: AREA 1: Bund 2, post-excavation of central section of east area



Figure 5b: AREA 2: Site Compound, working shot





Figure 6a: AREA 2: Access Road, working shot of gravel extraction



Figure 6b: AREA 2: Access Road, west facing section of gravel extraction





Figure 7a: AREA 2: Bund 3, post-excavation of strip



Figure 7b: AREA 2: Bund 4, working shot of western trench excavation





Figure 8a: AREA 2: Bund 4, east facing section of western trench excavation



Figure 8b: AREA 2: Bund 4, east facing section of feature [007]





Figure 9a: AREA 2: Bund 4, post-excitation of feature (009)



Figure 9b: AREA 2: Bund 4 Access, south facing section of [010]





Figure 10a: AREA 2: Bund 5, location shot



Figure 10b: AREA 2: Bund 6, location shot





Figure 11a: AREA 2: Bund 7, west end



Figure 11b: AREA 2: Bund 7, central area with BT cable running north-south



29. All the deposits recorded; (001), (002), (003), (004), (005), (006) and (009) were of natural origin with the two features, [007] and [010] and their associated fills (008) and (011) also being natural in origin.
30. The only anthropic evidence recorded across the monitored areas was ceramics representing late 19<sup>th</sup> to early 20<sup>th</sup> century wares, these were not retained. There were also general 20<sup>th</sup> and 21<sup>st</sup> century detritus in the form of plastic bottles and food wrapping waste. A British Telecom cable recorded in Bund 7 demonstrated that part of the route had been previously disturbed.

## Recommendations

31. The archaeological mitigation works did not reveal any significant archaeological material from within the development area. Those features that were revealed are considered to be of recent origin.
32. As such it is the recommendation of Rathmell Archaeology Ltd that no further works are appropriate. The appropriateness and acceptability of our recommendations rest with Aberdeenshire Council Archaeology Service on behalf of Aberdeenshire Council.

## Conclusion

33. The programme of monitoring works was undertaken on several site visits which took place over the period from 17<sup>th</sup> October 2016 to 16<sup>th</sup> March 2017 on behalf of Infrastructure Services, Aberdeenshire Council in support of the Huntly Flood Alleviation Scheme to meet Condition 7 of the granted planning consent (Planning App: APP/2012/0178) on land to the north and west of Huntly. This Data Structure Report covers the monitoring works requested by Aberdeenshire Council Archaeology Service who advise Aberdeenshire Council on archaeological matters.
34. In the course of the archaeological monitoring no significant archaeological features were uncovered. All the deposits recorded; (001), (002), (003), (004), (005), (006) and (009) were of natural origin with the two features, [007] and [010] and their associated fills (008) and (011) also being natural in origin. Across the monitored areas there was a general spread of late 19<sup>th</sup> to early 20<sup>th</sup> century ceramics identified but were not retained.

## References

### *Documentary*

Atkins. 2107. *Planning Application for Huntly Flood Alleviation Scheme, Huntly, Aberdeenshire: Archaeological Desk Based Assessment on behalf of Aberdeenshire Council*. Unpublished

## Appendix 1: Discovery & Excavation in Scotland

<b>LOCAL AUTHORITY:</b>	Aberdeenshire
<b>PROJECT TITLE/SITE NAME:</b>	Huntly Alleviation Scheme, Aberdeenshire
<b>PROJECT CODE:</b>	RA16019
<b>PARISH:</b>	Huntly
<b>NAME OF CONTRIBUTOR:</b>	Callum Allsop
<b>NAME OF ORGANISATION:</b>	Rathmell Archaeology Limited
<b>TYPE(S) OF PROJECT:</b>	Watching Brief
<b>NMRS NO(S):</b>	None
<b>SITE/MONUMENT TYPE(S):</b>	None
<b>SIGNIFICANT FINDS:</b>	None
<b>NGR (2 letters, 6 figures)</b>	NJ 52314 40635 (centred)
<b>START DATE (this season)</b>	17 <sup>th</sup> October 2017
<b>END DATE (this season)</b>	16 <sup>th</sup> March 2017
<b>PREVIOUS WORK (incl. DES ref.)</b>	None
<b>MAIN (NARRATIVE) DESCRIPTION:</b> (may include information from other fields)	<p>A programme of monitoring works was undertaken over several site visits which took place over the period from 17<sup>th</sup> October 2016 to 16<sup>th</sup> March 2017 on behalf of Infrastructure Services, Aberdeenshire Council in support of the Huntly Flood Alleviation Scheme to meet Condition 7 of the granted planning consent (Planning App: APP/2012/0178) on land to the north and west of Huntly.</p> <p>In the course of the archaeological monitoring no significant archaeological features were uncovered. All the deposits recorded; (001), (002), (003), (004), (005), (006) and (009) were of natural origin with the two features, [007] and [010] and their associated fills (008) and (011) also being natural in origin. Across the monitored areas there was a general spread of late 19<sup>th</sup> to early 20<sup>th</sup> century ceramics identified but were not retained.</p>
<b>PROPOSED FUTURE WORK:</b>	None
<b>CAPTION(S) FOR ILLUSTRS:</b>	None
<b>SPONSOR OR FUNDING BODY:</b>	Infrastructure Services, Aberdeenshire Council
<b>ADDRESS OF MAIN CONTRIBUTOR:</b>	Unit 8 Ashgrove Workshops, Kilwinning, Ayrshire KA13 6PU
<b>E MAIL:</b>	contact@rathmell-arch.co.uk
<b>ARCHIVE LOCATION (intended/deposited)</b>	Report to Aberdeenshire Council Archaeology Service and archive to National Record of Historic Environment.

## Appendix 2: Registers

### *Context Register*

Context No.	Area/ Trench	Type	Description	Interpretation
001	AREA 2	Deposit	Loose, mid-brown clayey silt loam with infrequent small sub-rounded and sub-angular stones and rooting	Topsoil
002	AREA 1	Deposit	Firm, mid-brown silty clay with very infrequent medium sub-rounded stones	Topsoil
003	AREA 1	Deposit	Very firm, grey clay with iron panning and very infrequent large sub-rounded boulders	Subsoil
004	AREA 1	Deposit	Wet, dark bluish grey clay with frequent very small stones and gravels	Natural Subsoil
005	AREA 2	Deposit	Firm, mid-brown silty clay with infrequent small to medium sub-rounded stones and rooting	Subsoil
006	AREA 2	Deposit	Loose, grey sandy gravels with very frequent small to medium rounded stones	Natural Subsoil
007	AREA 2: Bund 4	Cut	Sub-square cut with gentle to steeply sloping sides and an uneven base	Tree bole
008	AREA 2: Bund 4	Fill	Loose, mottled yellow sand and topsoil (001) with very infrequent small to medium sub-rounded stones and rooting	Backfill of [007]
009	AREA 2: Bund 4	Deposit	N-S linear, loose, light brown/orange gravel	Alluvial deposit
010	AREA 2: Bund 4	Cut	Sub-square cut with straight edges, rounded corners, shallow sloping sides, and slightly concave base	Stone throw
011	AREA 2: Bund 4	Fill	Loose, black humic loam with frequent charcoal and small to medium sub-angular and sub-rounded stones	Backfill of [010]

*Photographic Register*

<b>Image No.</b>	<b>Digital</b>	<b>Description</b>	<b>From</b>	<b>Date</b>
001	4547	AREA 2: Site Compound, pre-excavation	NE	17-10-16
002	4548	AREA 2: Site Compound, pre-excavation	SE	17-10-16
003	4549	AREA 2: Site Compound, working shot	SW	17-10-16
004	4550	AREA 2: Site Compound, working shot	S	17-10-16
005	4551	AREA 2: Site Compound, working shot	SW	17-10-16
006	4552	AREA 2: Site Compound, working shot	E	17-10-16
007	4553	AREA 2: Site Compound, working shot	SE	17-10-16
008	4554	AREA 2: Site Compound, working shot	SW	17-10-16
009	4555	AREA 2: Site Compound, test pit	W	18-10-16
010	4556	AREA 2: Site Compound, working shot	NE	18-10-16
011	4599	AREA 1: Site Compound, working shot	E	01-11-16
012	4600	AREA 1: Site Compound, working shot	SE	01-11-16
013	4601	AREA 1: Site Compound, working shot	NE	01-11-16
014	4602	AREA 1: Site Compound, working shot	SE	01-11-16
015	4603	AREA 1: Filter Drain, Test Pit 4 working shot	SE	01-11-16
016	4604	AREA 1: Filter Drain, Test Pit 4 post-excavation	S	01-11-16
017	4605	AREA 1: Filter Drain, Test Pit 4 north facing section	N	01-11-16
018	4606	AREA 1: Filter Drain, Test Pit 4 north facing section	N	01-11-16
019	4607	AREA 1: Filter Drain, Test Pit 3 post-excavation	S	01-11-16
020	4608	AREA 1: Filter Drain, Test Pit 3 north facing section	N	01-11-16
021	4609	AREA 1: Filter Drain, Test Pit 2 post-excavation	S	01-11-16

Image No.	Digital	Description	From	Date
022	4610	AREA 1: Filter Drain, Test Pit 2 north facing section	N	01-11-16
023	4611	AREA 1: Filter Drain, Test Pit 1 post-excavation	E	01-11-16
024	4612	AREA 1: Filter Drain, Test Pit 1 west facing section	W	01-11-16
025	4613	AREA 1: Surface Water Sewer, Pre-excavation at east end	W	07-11-16
026	4614	AREA 1: Surface Water Sewer, north facing section at east end	N	07-11-16
027	4615	AREA 1: Surface Water Sewer, working shot at east end	NW	07-11-16
028	4616	AREA 1: Surface Water Sewer, working shot at east end	E	07-11-16
029	4617	AREA 1: Surface Water Sewer, north facing section at east end	N	07-11-16
030	4618	AREA 1: Surface Water Sewer, working shot at east end	NE	07-11-16
031	4619	AREA 1: Surface Water Sewer, working shot at east end	NE	07-11-16
032	4620	AREA 1: Surface Water Sewer, working shot at east end	NE	07-11-16
033	4621	AREA 1: Surface Water Sewer, south facing section at east end	S	07-11-16
034	4622	AREA 1: Surface Water Sewer, working shot at east end	SE	07-11-16
035	4623	AREA 1: Surface Water Sewer, south facing section at east end	E	07-11-16
036	4624	AREA 1: Surface Water Sewer, working shot at east end	W	07-11-16
037	4625	AREA 1: Surface Water Sewer, working shot at east end	SE	07-11-16
038	4626	VOID		
039	4627	AREA 1: Bund 2, access strip	S	08-11-16
040	4628	AREA 1: Surface Water Sewer, working shot at centre	E	08-11-16
041	4629	AREA 1: Surface Water Sewer, south facing section at centre	S	08-11-16
042	4630	AREA 1: Surface Water Sewer, working shot of strip at centre	E	08-11-16
043	4631	AREA 1: Surface Water Sewer, post-excavation of strip at centre	SE	08-11-16
044	4632	AREA 1: Surface Water Sewer, post-excavation of strip at centre	SE	09-11-16



Image No.	Digital	Description	From	Date
045	4633	AREA 1: Surface Water Sewer, working shot of strip at centre	SE	09-11-16
046	4634	AREA 1: Surface Water Sewer, post-excavation of strip at centre	SE	09-11-16
047	4635	AREA 1: Surface Water Sewer, post-excavation of strip at centre	SE	09-11-16
048	4636	AREA 1: Surface Water Sewer, post-excavation of strip at west end	SE	09-11-16
049	4637	AREA 1: Surface Water Sewer, southwest facing section of strip at west end	SW	09-11-16
050	4638	AREA 1: Surface Water Sewer, ceramic field drain at west end	SW	09-11-16
051	4639	AREA 1: Surface Water Sewer, post-excavation of strip at west end	SE	09-11-16
052	4640	AREA 1: Surface Water Sewer, post-excavation of strip at west end	SE	09-11-16
053	4641	AREA 1: Surface Water Sewer, post-excavation of stripping	NW	09-11-16
054	4642	AREA 1: Bund 2, pre-excavation of north area	SE	09-11-16
055	4643	AREA 1: Bund 2, working shot of north area	NW	10-11-16
056	4644	AREA 1: Bund 2, area shot of unmonitored part of north area	SE	10-11-16
057	4645	AREA 1: Bund 2, working shot of north area	SW	10-11-16
058	4646	AREA 1: Bund 2, post-excavation of north area	SE	10-11-16
059	4647	AREA 1: Bund 2, southwest facing section of north area	SW	10-11-16
060	4648	AREA 1: Bund 2, post-excavation of north area	NW	10-11-16
061	4649	AREA 1: Surface Water Sewer, post-excavation of west end	SE	14-11-16
062	4650	AREA 1: Supermoon	SE	15-11-16
063	4651	AREA 1: Bund 2, working shot of east area	NW	15-11-16
064	4652	AREA 1: Bund 2, working shot of east area	SW	15-11-16
065	4653	AREA 1: Bund 2, setting shot of east area	NE	15-11-16
066	4654	AREA 1: Bund 2, post-excavation of east end of north area	W	16-11-16
067	4655	AREA 1: Bund 2, setting shot of east area	NE	18-11-16

Image No.	Digital	Description	From	Date
068	4656	AREA 1: Bund 2, working shot of east area	NE	18-11-16
069	4657	AREA 1: Bund 2, working shot of east area	NE	18-11-16
070	4658	AREA 1: Bund 2, post-excavation of north end of east area	NE	18-11-16
071	4659	AREA 1: Bund 2, working shot of east area	NE	18-11-16
072	4660	AREA 1: Bund 2, working shot of east area	SW	18-11-16
073	4661	AREA 1: Bund 2, working shot of east area	NE	18-11-16
074	4662	AREA 1: Bund 2, post-excavation of central section of east area (with flash)	SW	18-11-16
075	4663	AREA 1: Bund 2, post-excavation of central section of east area	SW	18-11-16
076	4664	AREA 1: Bund 2, end of works at east area	NE	18-11-16
077	4665	AREA 1: Filter Drain, general shot of unmonitored works	E	30-11-16
078	4666	AREA 1: Filter Drain, general shot of unmonitored works	E	30-11-16
079	4667	AREA 2: Site Compound, working shot of western extension of area	E	30-11-16
080	4668	AREA 2: Site Compound, working shot of western extension of area	E	30-11-16
081	4669	AREA 2: Site Compound, working shot of western extension of area	E	30-11-16
082	4670	AREA 2: Site Compound, working shot of western extension of area	W	30-11-16
083	4671	AREA 2: Site Compound, working shot of gravel extraction at western extension of area	E	30-11-16
084	4672	AREA 2: Site Compound, north facing section of gravel extraction (oblique)	SE	30-11-16
085	4699	AREA 1: Bund 1, working shot at east end	E	02-12-16
086	4700	AREA 1: Bund 1, working shot at east end	E	02-12-16
087	4701	AREA 2: Access Road, general shot of unmonitored works	S	07-12-16
088	4702	AREA 2: Access Road, general shot of unmonitored works	S	07-12-16
089	4703	AREA 2: Access Road, post-excavation at south end	S	07-12-16
090	4704	AREA 2: Access Road, post-excavation at south end	S	07-12-16

Image No.	Digital	Description	From	Date
091	4705	AREA 2: Access Road, post-excavation at south end	S	07-12-16
092	4706	AREA 2: Access Road, post-excavation at south end	NE	07-12-16
093	4707	AREA 2: Access Road, post-excavation at north end	SE	07-12-16
094	4708	AREA 2: Access Road, post-excavation at north end	W	07-12-16
095	4709	AREA 2: Access Road, post-excavation at north end	W	07-12-16
096	4710	AREA 2: Access Road, post-excavation at north end	E	07-12-16
097	4711	AREA 2: Access Road, west facing section of gravel extraction	W	07-12-16
098	4712	AREA 2: Access Road, working shot of gravel extraction	S	07-12-16
099	4713	AREA 2: Access Road, working shot of road extension	SW	07-12-16
100	4714	AREA 2: Access Road, working shot of road extension	SW	07-12-16
101	4715	AREA 2: Access Road, working shot at north end	SE	07-12-16
102	4716	AREA 2: Access Road, working shot at north end	N	07-12-16
103	4717	AREA 2: Access Road, north facing section of gravel extraction	N	08-12-16
104	4718	AREA 2: Access Road, working shot of gravel extraction	SE	08-12-16
105	4719	AREA 1: Bund 1, working shot of strip	E	08-12-16
106	4720	AREA 1: Bund 1, working shot of strip	E	08-12-16
107	4721	AREA 1: Bund 1, working shot of strip	W	09-12-16
108	4722	AREA 1: Bund 1, working shot of strip	E	09-12-16
109	4723	VOID		
110	4724	VOID		
111	4725	VOID		
112	4726	AREA 1: Bund 1, working shot of strip	E	09-12-16
113	4727	AREA 2: Bund 4, working shot of western strip	W	09-12-16

Image No.	Digital	Description	From	Date
114	4728	AREA 2: Bund 4, working shot of western strip	SE	09-12-16
115	4729	AREA 2: Bund 4, pre-excavation of feature [007]	E	12-12-16
116	4730	AREA 2: Bund 4, setting shot of feature [007]	E	12-12-16
117	4731	AREA 2: Bund 4, east facing section of feature [007]	E	12-12-16
118	4732	AREA 2: Bund 4, post-excavation of feature [007]	E	12-12-16
119	4733	AREA 2: Bund 4, pre-excavation of feature (009)	E	12-12-16
120	4734	AREA 2: Bund 4, pre-excavation of feature (009)	S	12-12-16
121	4735	AREA 2: Bund 4, north facing section of feature (009)	N	12-12-16
122	4736	AREA 2: Bund 4, south facing section of feature (009)	S	12-12-16
123	4737	AREA 2: Bund 4, post-excavation of feature (009)	S	12-12-16
124	4738	AREA 2: Bund 4, working shot of western strip	E	12-12-16
125	4739	AREA 2: Bund 4, working shot of western strip	W	12-12-16
126	4740	AREA 2: Bund 4, working shot of western strip	NE	13-12-16
127	4741	AREA 2: Bund 4, working shot of western strip	W	13-12-16
128	4742	AREA 2: Bund 4, working shot of western strip	W	13-12-16
129	4743	VOID		
130	4744	AREA 2: Bund 4, end of strip at west end	E	14-12-16
131	4745	AREA 2: Bund 4, working shot of western bund excavation	E	14-12-16
132	4746	AREA 2: Bund 4, working shot of western bund excavation	SE	14-12-16
133	4747	AREA 2: Bund 4, working shot of western bund excavation	E	14-12-16
134	4748	AREA 2: Bund 4, east facing section of existing bund	E	14-12-16
135	4749	AREA 2: Bund 4, working shot of western trench excavation	E	14-12-16
136	4750	AREA 2: Bund 4, east facing section of western trench excavation	E	14-12-16

Image No.	Digital	Description	From	Date
137	4752	AREA 2: Bund 4, east facing section of western trench excavation	E	14-12-16
138	4751	AREA 2: Bund 4, working shot of western trench excavation	E	14-12-16
139	4753	AREA 2: Bund 4, working shot of western trench excavation	E	14-12-16
140	4754	AREA 2: Bund 4, working shot of western trench excavation	E	14-12-16
141	4755	AREA 2: Bund 4, post-excavation of natural stone feature, west end	S	15-12-16
142	4756	AREA 2: Bund 4, south facing section of natural stone feature, west end	S	15-12-16
143	4757	AREA 2: Bund 4, working shot of western trench widening	E	15-12-16
144	4758	AREA 2: Bund 4, working shot of western trench excavation	W	20-12-16
145	4759	AREA 1: Bund 1, working shot of north area strip	S	20-12-16
146	4760	AREA 1: Bund 1, working shot of north area strip	N	20-12-16
147	4761	AREA 1: Bund 1, post-excavation of north area strip	S	20-12-16
148	4762	AREA 2: Bund 4, working shot of western trench excavation	E	20-12-16
149	4763	AREA 2: Bund 4, south facing section of western trench excavation	S	20-12-16
150	4787	AREA 2: Bund 4, working shot of eastern strip	W	10-01-17
151	4788	AREA 2: Bund 4, working shot of eastern strip	E	10-01-17
152	4789	AREA 2: Bund 4, working shot of eastern strip	E	10-01-17
153	4790	AREA 2: Bund 4, working shot of eastern strip	NE	10-01-17
154	4791	AREA 2: Bund 4, working shot of eastern strip	W	10-01-17
155	4792	AREA 2: Bund 4, working shot of eastern strip	W	12-01-17
156	4793	AREA 2: Bund 4, working shot of eastern strip	E	12-01-17
157	4794	AREA 2: Bund 4, working shot of eastern strip	E	12-01-17
158	4795	AREA 2: Bund 4, working shot of eastern strip	E	12-01-17
159	4796	AREA 1: Bund 2, post-excavation of southern area strip	NE	16-01-17



Image No.	Digital	Description	From	Date
160	4797	AREA 2: Bund 4, working shot of eastern trench excavation	W	16-01-17
161	4798	AREA 2: Bund 4, working shot of eastern trench excavation	W	16-01-17
162	4799	AREA 2: Bund 4, working shot of eastern trench excavation	W	16-01-17
163	4800	AREA 2: Bund 4, working shot of eastern trench excavation	W	16-01-17
164	4801	AREA 2: Bund 4, working shot of eastern trench excavation	E	16-01-17
165	4802	AREA 2: Bund 4, working shot of eastern trench excavation	SW	16-01-17
166	4803	AREA 2: Bund 4, working shot of eastern trench excavation	E	18-01-17
167	4804	AREA 2: Bund 5, location shot	NW	18-01-17
168	4805	AREA 2: Bund 5, location shot	SE	18-01-17
169	4806	AREA 2: Bund 6, location shot	SW	18-01-17
170	4807	AREA 2: Bund 6, location shot	NE	18-01-17
171	4808	AREA 2: Bund 4, working shot of western trench excavation	E	18-01-17
172	4809	AREA 2: Bund 4, post-excavation of western trench excavation	W	18-01-17
173	4810	AREA 2: Bund 4, working shot of archaeologist	S	18-01-17
174	4811	AREA 2: Bund 4, working shot of eastern strip	W	19-01-17
175	4812	AREA 2: Bund 4, post-excavation of eastern strip	W	19-01-17
176	4813	AREA 2: Bund 4, working shot of eastern strip	W	19-01-17
177	4814	AREA 2: Bund 4, post-excavation of eastern trench excavation	SW	20-01-17
178	4815	AREA 2: Bund 4, post-excavation of eastern trench excavation	E	20-01-17
179	4816	AREA 2: Bund 4, post-excavation of eastern trench excavation	E	20-01-17
180	4817	AREA 2: Bund 4 Access, working shot of strip	SE	25-01-17
181	4818	AREA 2: Bund 4 Access, pre-excavation of [010]	S	25-01-17
182	4819	AREA 2: Bund 4 Access, setting of [010]	E	25-01-17

Image No.	Digital	Description	From	Date
183	4820	AREA 2: Bund 4 Access, mid-excavation of [010]	S	25-01-17
184	4821	AREA 2: Bund 4 Access, south facing section of [010]	S	25-01-17
185	4822	AREA 2: Bund 4 Access, post-excavation of [010]	S	25-01-17
186	4823	AREA 2: Bund 4 Access, working shot of strip	W	25-01-17
187	P2130001	AREA 1: Bund 1, small unmonitored area of topsoil strip	S	13-02-17
188	P2130002	AREA 1: Bund 1, small unmonitored area of topsoil strip	SE	13-02-17
189	P2140003	AREA 2: Bund 4, working shot of southern strip	S	14-02-17
190	P2140004	AREA 2: Bund 4, working shot of southern strip	S	14-02-17
191	P2140005	AREA 2: Bund 4, post-excavation of southern strip	N	14-02-17
192	P2140006	AREA 2: Bund 4, working shot of southern strip	N	14-02-17
193	P2140007	AREA 2: Bund 4, working shot of southern strip	N	14-02-17
194	P2150008	AREA 2: Bund 4, post-excavation of southern strip	N	15-02-17
195	P2150009	AREA 2: Bund 4, post-excavation of southern strip	N	15-02-17
196	P2150010	AREA 2: Bund 4, post-excavation of southern strip	S	15-02-17
197	P2150011	AREA 2: Bund 3, Pre-excavation of area	E	15-02-17
198	P2150012	AREA 2: Bund 3, Working shot of strip	W	15-02-17
199	P2150013	AREA 2: Bund 3, Working shot of strip	W	15-02-17
200	P2150014	AREA 2: Bund 3, Post-excavation of strip	W	15-02-17
201	P2150015	AREA 2: Bund 3, Working shot of strip	E	15-02-17
202	P2150016	AREA 2: Bund 3, Post-excavation of strip	NW	15-02-17
203	P2150017	AREA 2: Bund 3, Working shot of strip	W	15-02-17
204	4902	Pre-excavation of area for Bund 7	S	
205	4903	Pre-excavation of area for Bund 7	N	

Image No.	Digital	Description	From	Date
206	4904	Bund 7, looking east	E	
207	4905	Bund 7, looking east	E	
208	4906	Bund 7, looking west	W	
209	4907	Bund 7, pre-excavation of the south route	N	
210	4908	Bund 7, south end of the football pitch	E	
211	4909	Bund 7, running south	N	
212	4910	Bund 7, view to the north	S	
213	4911	Bund 7, view to the east	W	

## Contact Details

37. Rathmell Archaeology can be contacted at our Office or through the web:
- |                          |                                       |
|--------------------------|---------------------------------------|
| Rathmell Archaeology Ltd | t.: 01382 645065                      |
| North Tay Office Centre  | m.: 07896 596609                      |
| 48 Loons Road            | e.: callum.allsop@rathmell-arch.co.uk |
| Dundee                   |                                       |
| DD3 6AP                  |                                       |
38. The Aberdeenshire Council Archaeology Service can be contacted at their office or through the web:
- |                       |  |
|-----------------------|--|
| Archaeology Service   | <a href="http://www.aberdeenshire.gov.uk">www.aberdeenshire.gov.uk</a>                     |
| Aberdeenshire Council |  |
| Woodhill House        | t.: 01224 664221   |
| Westburn Road         |  |
| Aberdeen              |  |
| AB16 5GB              | e.: <a href="mailto:archaeology@aberdeenshire.gov.uk">archaeology@aberdeenshire.gov.uk</a> |

End of Document