

Contact Details

Rathmell Archaeology can be contacted at its Registered Office or through the web:

Rathmell Archaeology Ltd

10 Ashgrove Workshops
Kilwinning
Ayrshire
KA13 6PU

www.rathmell-arch.co.uk

t.: 01294 542848
m.: 07817 334907

f.: 01294 542849
e.: contact@rathmell-arch.co.uk

The West of Scotland Archaeology Service can be contacted at their office or through the web:

West of Scotland Archaeology Service

Charing Cross Complex
20 India Street
Glasgow
G2 4PF

www.wosas.org.uk

t.: 0141 287 8332-3

f.: 0141 287 9259
e.: enquiries@wosas.glasgow.gov.uk

End of Document

Appendix 3: Discovery & Excavation in Scotland

LOCAL AUTHORITY:	North Ayrshire
PROJECT TITLE/SITE NAME:	100-106 John Finnie Street, Kilmarnock
PARISH:	Kilmarnock
NAME OF CONTRIBUTOR:	Louise Turner
NAME OF ORGANISATION:	Rathmell Archaeology Limited
TYPE(S) OF PROJECT:	Building Recording
NMRS NO(S):	NS43NW 179
SITE/MONUMENT TYPE(S):	None
SIGNIFICANT FINDS:	None
NGR (2 letters, 6 figures)	NS 4265 3784
START DATE (this season)	27 th March 2008
END DATE (this season)	28 th March 2008
PREVIOUS WORK (incl. DES ref.)	None
PROPOSED FUTURE WORK:	None
MAIN (NARRATIVE) DESCRIPTION: (may include information from other fields)	<p>A programme of archaeological building recording was undertaken in respect of a proposed building refurbishment at 100-106 John Finnie Street, Kilmarnock.</p> <p>The property comprises a 3-storey building built in 1876 and attributed to architect William Railton. The ground floor consists of commercial premises still in use as such, with vacant flatted tenement accommodation above. The 1st floor plan had been subject to much alteration, but the original room layout remained unchanged throughout much of the 2nd floor. Many original features had survived, though to varying degrees of preservation; amongst the features recorded were plaster cornices, bed recesses, fireplaces, and timber sash-and-case windows with associated timber panelling.</p>
PROJECT CODE:	08017
SPONSOR OR FUNDING BODY:	Mr R Lindsay
ADDRESS OF MAIN CONTRIBUTOR:	10 Ashgrove Workshops, Kilwinning, Ayrshire KA13 6PU
E MAIL:	contact@rathmell-arch.co.uk
ARCHIVE LOCATION (intended/deposited)	Report to West of Scotland Archaeology Service and archive to National Monuments Record of Scotland.

Image No.	Digital	Description	From	Date
316	212	Detail of roofline – washhouse	W/Vertical	28/03/08
317	213	View of outbuildings	N	28/03/08
318	214	Shot of back entrance (interior)	W	28/03/08
319	215	John Finnie Street entrance	W	28/03/08
320	216	Detail of date on front of building	W	28/03/08
321	217	Ground floor, bay 1 window (John Finnie Street) – modern shop front	W	28/03/08
322	218	Ground floor, bays 3 & 4 windows (John Finnie Street) – modern shop front	W	28/03/08
323	219	1 st floor, bay 1 window (John Finnie Street)	W	28/03/08
324	220	1 st floor, bay 2 window (John Finnie Street) (one blind)	W	28/03/08
325	221	1 st floor, bay 3 window (John Finnie Street)	W	28/03/08
326	222	1 st floor, bay 4 window (John Finnie Street)	W	28/03/08
327	223	2 nd floor, bay 1 window (John Finnie Street)	W	28/03/08
328	224	2 nd floor, bay 2 window (John Finnie Street)	W	28/03/08
329	225	2 nd floor, bay 3 window (John Finnie Street)	W	28/03/08
330	226	2 nd floor, bay 4 window (John Finnie Street)	W	28/03/08
331	227	Detail of line and corbels (John Finnie Street)	W	28/03/08
332	228	Ground floor, bay 1 window (Nelson Street)	S	28/03/08
333	229	Ground floor, bay 2 window (Nelson Street)	S	28/03/08
334	230	Ground floor, bay 3 window (Nelson Street)	S	28/03/08
335	231	Ground floor, bay 4 window (Nelson Street)	S	28/03/08
336	232	Ground floor, bay 5 window (Nelson Street)	S	28/03/08
337	233	1 st and 2 nd floors, bay 1 windows (Nelson Street)	S	28/03/08
338	234	1 st and 2 nd floors, bay 2 windows (Nelson Street)	S	28/03/08
339	235	1 st and 2 nd floors, bay 3 windows (Nelson Street)	S	28/03/08
340	236	1 st and 2 nd floors, bay 4 windows (Nelson Street)	S	28/03/08
341	237	1 st and 2 nd floors, bay 5 windows (Nelson Street)	S	28/03/08
342	238	W facing elevation of Nelson Street	SE	28/03/08
343	239	Detail of bay 4 window, 1 st floor showing lamination of sandstone	S	28/03/08
344	240	Detail of roofline with deteriorating stonework	S	28/03/08
345	241	Bays 2-3 – Missing downpipe and dampness	S	28/03/08
346	242	Missing corbels, bay 2, W facing elevation (John Finnie Street)	W	28/03/08

Image No.	Digital	Description	From	Date
282	178	Stairwell 001 – Detail of cornice on W side	E	28/03/08
283	179	Stairwell 001 – View of 2 nd floor window	W	28/03/08
284	180	N facing elevation from 202	NW	28/03/08
285	181	Stairwell 001 – 1 st floor entrance to 101	E	28/03/08
286	182	106 – Cornice, general view	E	28/03/08
287	183	105 – Cornice, general view	E	28/03/08
288	184	107 – Cornice, general view	E	28/03/08
289	185	110 – Cornice, general view	N	28/03/08
290	186	111 – Cornice, general view	N	28/03/08
291	187	115 – Cornice, general view	E	28/03/08
292	188	Stairwell 001 – Detail of stair tread	W	28/03/08
293	189	003 – General view	W	28/03/08
294	190	003 – Detail of window	W	28/03/08
295	191	004 – View of corridor	E	28/03/08
296	192	Stairwell 001 – View of window	W	28/03/08
297	193	Later infill to S of stair on ground floor 001	E	28/03/08
298	194	Washhouse and outbuilding to N	SW	28/03/08
299	195	Outbuilding to S	NW	28/03/08
300	196	Perimeter wall to N (nb. coping and brick partitions)	S	28/03/08
301	197	Shot of blocked bay 1 (N facing elevation)	N	28/03/08
302	198	Shot of blocked bay 2 (N facing elevation)	N	28/03/08
303	199	Shot of blocked bays 3 and 4 (N facing elevation)	NW	28/03/08
304	200	Shot of blocked bay 5 (N facing elevation)	N	28/03/08
305	201	E side of N facing elevation	N	28/03/08
306	202	W side of N facing elevation	N	28/03/08
307	203	W side of N facing elevation (lower)	N	28/03/08
308	204	E facing elevation (N side) (lower)	E	28/03/08
309	205	E facing elevation (S side) (lower)	E	28/03/08
310	206	E facing elevation (N side) (upper)	E	28/03/08
311	207	E facing elevation (S side) (upper)	E	28/03/08
312	208	N facing elevation (E side general)	N	28/03/08
313	209	Interior of washhouse	W	28/03/08
314	210	Stone trough in washhouse	NW	28/03/08
315	211	Interior of washhouse	NW	28/03/08

Image No.	Digital	Description	From	Date
248	144	202 – W wall, S end	E	28/03/08
249	145	202 – Detail of cupboard, W wall	E	28/03/08
250	146	202 – Detail of bed recess, W wall	E	28/03/08
251	147	202 – View of fireplace, N wall	S	28/03/08
252	148	202 – Detail of fireplace	SE	28/03/08
253	149	202 – Cupboard, N wall (door closed)	S	28/03/08
254	150	202 – Cupboard, N wall (door open)	S	28/03/08
255	151	202 – Damage to ceiling in NW corner	SE	28/03/08
256	152	203 – General view	SE	28/03/08
257	153	203 – General view	NW	28/03/08
258	154	203 – W wall, S end	E	28/03/08
259	155	203 – W wall, N end	SE	28/03/08
260	156	203 – Window (general)	E	28/03/08
261	157	203 – Timber paneling at window (N side)	S	28/03/08
262	158	203 – Original fire surround, N wall	S	28/03/08
263	159	203 – Cupboard, N wall (door closed)	S	28/03/08
264	160	203 – Cupboard, N wall (door open)	S	28/03/08
265	161	203 – Doorway, E wall	NW	28/03/08
266	162	203 – General view, E wall	NW	28/03/08
267	163	203 – Cornice, N end	S	28/03/08
268	164	203 – Cornice, NW corner	SE	28/03/08
269	165	203 – Detail of cornice, SW corner	NE	28/03/08
270	166	204 – General view	NW	28/03/08
271	167	204 – General view	SE	28/03/08
272	168	204 – View of N wall	S	28/03/08
273	169	204 – Detail of wallpaper	S	28/03/08
274	170	204 – Detail of ceiling showing cornice	N	28/03/08
275	171	222 – General view	W	28/03/08
276	172	222 – General view	NE	28/03/08
277	173	204/222 – Cable moldings on side of arched recess	S	28/03/08
278	174	View of entranceways (modern inserts), 2 nd floor landing, stairwell 001	E	28/03/08
279	175	View of stairwell 001	W/Vertical	28/03/08
280	176	Stairwell 001 – Detail of cast iron balustrade	W	28/03/08
281	177	Stairwell 001 – Detail of cornice on E side	W	28/03/08

Image No.	Digital	Description	From	Date
214	110	207 – S wall, General view	N	28/03/08
215	111	207 – S wall, detail of fireplace	N	28/03/08
216	112	207 – E wall, N end	W	28/03/08
217	113	207 – E wall, S end	W	28/03/08
218	114	207 – E wall, doorway	W	28/03/08
219	115	207 – W wall, window	E	28/03/08
220	116	207 – Detail of paneling in window, N side, W wall (lower)	S	28/03/08
221	117	207 – Detail of paneling in window, N side, W wall (upper)	S	28/03/08
222	118	207 – Detail of ornate fire tiles in 1930s fire surround	N	28/03/08
223	119	207 – General view of cornice	SW	28/03/08
224	120	207 – Detail of cornice	S/Vertical	28/03/08
225	121	205 – General view of cornice	NE	28/03/08
226	122	205 – General view	SE	28/03/08
227	123	205 – W wall	E	28/03/08
228	124	205 – N wall	SE	28/03/08
229	125	205 – S wall	ENE	28/03/08
230	126	205 – E wall	W	28/03/08
231	127	205 – Detail of doorway	W	28/03/08
232	128	205 – Detail of window	E	28/03/08
233	129	205 – Detail of cornice (W end)	E	28/03/08
234	130	205 – View of cornice (E end)	W	28/03/08
235	131	205 – Detail of cornice (SE corner)	NW	28/03/08
236	132	206 – General view	NE	28/03/08
237	133	206 – General View	SW	28/03/08
238	134	206 – Shot of cupboard, S end	N	28/03/08
239	135	206 – N wall	S	28/03/08
240	136	201 – General view	W	28/03/08
241	137	201 – Detail of window	W	28/03/08
242	138	201 – Detail of timber paneling to S of w/c	W	28/03/08
243	139	202 – General view	SW	28/03/08
244	140	202 – E wall, N end	W	28/03/08
245	141	202 – S wall, E end	N	28/03/08
246	142	202 – N wall, E end	S	28/03/08
247	143	202 – N wall, W end and W wall, E end	SE	28/03/08

Image No.	Digital	Description	From	Date
180	076	220 – View from stairwell 002 towards 219	N	28/03/08
181	077	220 – General view	SE	28/03/08
182	078	220 – General view	SW	28/03/08
183	079	220 – General view of doorway	S	28/03/08
184	080	Stairwell 002 – General view from 2 nd floor	W/Vertical	28/03/08
185	081	Stairwell 002 – View of corncicing, S side	N	28/03/08
186	082	Stairwell 002 – Detail of banister	N	28/03/08
187	083	Stairwell 002 – Original entrance	NE/Vertical	28/03/08
188	084	View of stairwell 002 from 2 nd floor landing	W	28/03/08
189	085	View of stairwell 002 from 1 st floor	E	28/03/08
190	086	Base of stairwell 002	W	28/03/08
191	087	Stairwell 002 – Looking up to 1 st floor landing	E	28/03/08
192	088	Stairwell 002 – Window, 1 st floor	S	28/03/08
193	089	Stairwell 002 – Window, 2 nd floor	SW	28/03/08
194	090	Stairwell 002 – Door, 1 st floor	N	28/03/08
195	091	Stairwell 002 – Detail of tread	W	28/03/08
196	092	208 – General view	NW	28/03/08
197	093	208 – W wall	E	28/03/08
198	094	208 – N wall	S	28/03/08
199	095	208 – Detail of cupboard recess in S wall	N	28/03/08
200	096	208 – Detail of fireplace, plinth and void in S wall	N	28/03/08
201	097	208 – W wall with bed recess	E	28/03/08
202	098	208 – S wall	N	28/03/08
203	099	208 – Doorway	S	28/03/08
204	100	208 – Shot of window	W	28/03/08
205	101	209 – General view	W	28/03/08
206	102	209 – Detail of window	W	28/03/08
207	103	209 – Detail of timber paneling to S of w/c	W	28/03/08
208	104	221 – General view	W	28/03/08
209	105	221 – General view	S	28/03/08
210	106	207 – General view	NE	28/03/08
211	107	211 – W wall, S end	NE	28/03/08
212	108	207 – W wall, N end	E	28/03/08
213	109	207 – N wall	S	28/03/08

Image No.	Digital	Description	From	Date
146	041	215 – S wall of bed recess	N	28/03/08
147	042	215 – Detail showing later infill at N side of bed recess	S	28/03/08
148	043	215 – Door and doorframe	N	28/03/08
149	044	215 – Detail of skirting board, W of bed recess	N	28/03/08
150	045	216 – General view	S	28/03/08
151	046	216 – Detail of ceiling, laths exposed below modern polystyrene tiles	S/Vertical	28/03/08
152	047	216 – Original (?) timber work adjacent to modern w/c	SE	28/03/08
153	048	216 – Window	S	28/03/08
154	049	216 – Modern disturbance to E of w/c	SW	28/03/08
155	050	216 – View of w/c showing damage to surrounding area	SW	28/03/08
156	051	216 – Doorway	N	28/03/08
157	052	217 – General view	W	28/03/08
158	053	217 – Detail of cornice	W	28/03/08
159	054	217 – General view	E	28/03/08
160	055	217 – Detail of W wall and cornice above	E	28/03/08
161	056	217 – Cupboard in N wall (door closed)	S	28/03/08
162	057	217 – Cupboard in N wall (door open)	S	28/03/08
163	058	219 – General view	W	28/03/08
164	059	219 – General view	E	28/03/08
165	060	218 – General view	E	28/03/08
166	061	218 – General view	W	28/03/08
167	062	218 – View through hole into loft	Vertical	28/03/08
168	063	210 – General view	NE	28/03/08
169	064	210 – W wall	E	28/03/08
170	065	210 – Plinth of former fireplace, W side, N wall	S	28/03/08
171	066	210 – N wall	S	28/03/08
172	067	210 – E wall, N side	W	28/03/08
173	068	210 – E wall, S side	W	28/03/08
174	069	210 – View of ceiling	W	28/03/08
175	070	210 – Detail of ceiling, NE corner, exposed laths	W	28/03/08
176	072	210 – Detail of window, W wall	E	28/03/08
177	073	210 – Detail of window, S wall	N	28/03/08
178	074	210 – Exposed timber lintel over S wall	N	28/03/08
179	075	210 – Shot of doorway	W	28/03/08

Image No.	Digital	Description	From	Date
112	007	212 – S wall	NW	28/03/08
113	008	212 – Detail of window in S wall	NW	28/03/08
114	009	213 – General view	N	28/03/08
115	010	213 – S wall	NW	28/03/08
116	011	213 – N wall	S	28/03/08
117	012	213 – W wall	E	28/03/08
118	013	213 – E wall, N end	W	28/03/08
119	014	213 – E wall, S end	W	28/03/08
120	015	213 – Detail of doorway	S	28/03/08
121	016	213 – Detail of window	N	28/03/08
122	017	213 – Detail of original paneling on S side of window obscured by modern panel	NW	28/03/08
123	018	213 – View of cornice, S wall	N	28/03/08
124	019	213 – Detail of cornice, NW corner	SE	28/03/08
125	020	213 – Detail of skirting board	S	28/03/08
126	021	214 – General view	NW	28/03/08
127	022	214 – General view	SW	28/03/08
128	023	214 – Doorway in N wall	S	28/03/08
129	024	214 – N wall, view of intact cornice	S	28/03/08
130	025	214 – Shot of obscured fireplace	W	28/03/08
131	026	214 – Shot of fireplace	W	28/03/08
132	027	214 – Shot of fireplace	W	28/03/08
133	028	215 – General view	SW	28/03/08
134	029	215 – View of N wall	S	28/03/08
135	030	215 – E wall	SW	28/03/08
136	031	215 – Ceiling with moldy patch	Vertical	28/03/08
137	032	215 – S wall, E side (bed recess)	N	28/03/08
138	033	215 – S wall, W side (doorway)	N	28/03/08
139	034	215 – E wall	W	28/03/08
140	035	215 – Plinth marking site of former fireplace	W	28/03/08
141	036	215 – Rear of flat looking onto John Finnie Street	SE	28/03/08
142	037	215 – Shot of window	S	28/03/08
143	038	215 – Damage to skirting, NW corner	E	28/03/08
144	039	215 – View looking into bed recess	NW	28/03/08
145	040	215 – E wall of bed recess	NW	28/03/08

Image No.	Digital	Description	From	Date
78	081	101 – Detail of exposed bricks in N wall	W	27/03/08
79	082	106 – General view	NE	27/03/08
80	083	106 – Detail of window	NE	27/03/08
81	084	106 – Detail of cornice	SW	27/03/08
82	085	106 – View of N wall	S	27/03/08
83	086	106 – Detail of skirting, N wall	S	27/03/08
84	087	105 – General view	E	27/03/08
85	088	105 – Detail of window	E	27/03/08
86	089	105 – Detail of cornice	E	27/03/08
87	090	104 – General view	SE	27/03/08
88	091	104 – General view	SW	27/03/08
89	092	104 – Cupboard recess, W side, N wall	S	27/03/08
90	093	103 – General view	SW	27/03/08
91	094	103 – Detail of window	W	27/03/08
92	095	103 – Detail of doorway	N	27/03/08
93	096	102 – General view	W	27/03/08
94	097	102 – Detail of arched recess above door	W	27/03/08
95	098	102 – Detail of window	W	27/03/08
96	099	102 – View of blocked doorway	SW	27/03/08
97	100	102 – Line of wall marking original extent of toilet	W	27/03/08
98	101	102 – Detail of arched recess above door	E	27/03/08
99	102	118 – General view	S	27/03/08
100	103	118 – Detail of cornice	N/Vertical	27/03/08
101	104	118 – Blocked doorway	NW	27/03/08
102	105	118 – Doorway from 118 to 101	N	27/03/08
103	106	118 – Doorway from 118 to 101	S	27/03/08
104	107	100 – General view	W	27/03/08
105	108	100 – Detail of exposed brickwork, S side	NW	27/03/08
106	001	211 – General view	N	28/03/08
107	002	211 – General view	S	28/03/08
108	003	211 – View of Window with encroaching tiled partition wall	N	28/03/08
109	004	211 – Detail of incised decoration at top of window frame	N	28/03/08
110	005	211 – Shot of ceiling	Vertical	28/03/08
111	006	212 – General view	NW	28/03/08

Image No.	Digital	Description	From	Date
44	047	111 – General view	NW	27/03/08
45	048	111 – N wall, doorway	S	27/03/08
46	049	111 – Window, original timber paneling in situ and exposed on E side	NW	27/03/08
47	050	111 – Cupboard recess in E wall	W	27/03/08
48	051	111 – Cupboard recess in E wall	W	27/03/08
49	052	111 – Cupboard recess in E wall, detail of interior showing early wallpaper	W	27/03/08
50	053	111 – Detail of cornice, NE corner	WSW	27/03/08
51	054	111 – Detail of skirting, N wall	S	27/03/08
52	055	112 – General view	S	27/03/08
53	056	112 – Detail of window, E wall	S	27/03/08
54	057	112 – Detail of ceiling	Vertical	27/03/08
55	058	112 – Doorway from corridor	W	27/03/08
56	059	113 – General view	S	27/03/08
57	060	113 – Detail of window	S	27/03/08
58	061	114 – General view	S	27/03/08
59	062	114 – Detail of window	S	27/03/08
60	063	114 – Detail of door molding	N	27/03/08
61	064	114 – Detail of ceiling	S/Vertical	27/03/08
62	065	115/116/117 – General view along whole of extent of corridor	W	27/03/08
63	066	115 – General view	W	27/03/08
64	067	115 – Detail of cornice, W end	E	27/03/08
65	068	116 – Detail of entrance	N	27/03/08
66	069	116 – Entrance	W	27/03/08
67	070	116 – General view	N	27/03/08
68	071	117 – Modified doorway from 117 to 107	E	27/03/08
69	072	117 – Possible doorway at E end, N wall	S	27/03/08
70	073	101 – General view	NW	27/03/08
71	074	101 – General view	NE	27/03/08
72	075	101 – E wall	W	27/03/08
73	076	101 – N wall	S	27/03/08
74	077	101 – W wall	E	27/03/08
75	078	101 – S wall	N	27/03/08
76	079	101 – Original doorway, S wall, E end	N	27/03/08
77	080	101 – Detail of window, E wall	W	27/03/08

Image No.	Digital	Description	From	Date
10	012	107 – Shot of fireplace on N wall	S	27/03/08
11	013	107 – N wall	S	27/03/08
12	014	107 – Shot of N doorway in E wall	W	27/03/08
13	015	107 – E wall, N side	SW	27/03/08
14	016	107 – E wall, S side	NW	27/03/08
15	017	107 – S wall	N	27/03/08
16	018	107 – Detail of timber paneling – E side, S wall	N	27/03/08
17	019	107 – Detail of window – E side, S wall	N	27/03/08
18	020	107 – Detail of sash and case window upper panes, S wall	NE	27/03/08
19	021	107 – Detail of sash and case window upper panes, W wall	E	27/03/08
20	022	107 – S doorway, E wall	W	27/03/08
21	024	107 – Detail of grate in fireplace, N wall	S	27/03/08
22	025	107 – Detail of skirting board, W wall	S	27/03/08
23	026	107 – Detail of skirting board, W wall	E	27/03/08
24	027	108 – General view	N	27/03/08
25	028	108 – S wall	N	27/03/08
26	029	108 – Doorway in E wall	W	27/03/08
27	030	108 – General view of E wall	W	27/03/08
28	031	108 – General view of N wall	S	27/03/08
29	032	108 – Cupboard in W end, N wall	S	27/03/08
30	033	109 - General view	N	27/03/08
31	034	109 – N wall	S	27/03/08
32	035	109 – W wall, N end	E	27/03/08
33	036	109 – W wall, S end	E	27/03/08
34	037	109 – Detail of window, S wall	N	27/03/08
35	038	109 – S wall	NNW	27/03/08
36	039	109 – E wall	NW	27/03/08
37	040	110 – General view	NW	27/03/08
38	041	110 – Detail of cornice NE corner	SW	27/03/08
39	042	110 – Detail of window, S wall	N	27/03/08
40	043	110 – Doorway detail, N wall	S	27/03/08
41	044	110 – Detail of door molding, N wall	S	27/03/08
42	045	110 – Detail of window	N	27/03/08
43	046	110 – Detail of skirting NW corner	SE	27/03/08

		recess)		Window original sash and case, less ornate than those on street facing elevations. No cornice. Original skirting survives in places. Kitchen. <i>(Flat 4)</i>
216	2 nd	3.39m	2.28m	Site of original WC, now still no use as such. Ceiling height original. Original sash and case window. Bottom of window area now ruined by insertion of modern w/c. Skirting, door and doorframe all original. <i>(Flat 4)</i>
217	2 nd	3.36m	2.28m	Corridor with intact cornice. Originally would have formed the hallway of one property. Walls original height. Doors and doorways to adjacent rooms are original, with a possible missing doorframe at W end (former entrance?). Cupboard to W of WC now contains a fuse box. <i>(Flat 4)</i>
218	2 nd	3.16m (prob. orig. 3.32m)		W stretch of corridor, differentiated from 219 by height of ceiling. Suspended ceiling, hatch to loft removed, revealing lath and plaster above and possible remains of cornice although this is unclear. Doorframes are all different sizes to E half though appear original. <i>(Flat 3)</i>
219	2 nd	2.36m	2.28m	Possible former entrance vestibule to 2 properties. Modern front door. To W and E, there are narrow openings which may denote former doorways to separate properties but this is unclear. <i>(Flats 3 & 4)</i> .
220	2 nd	2.53m	2m(inner); 2.28m(outer)	Modern entrance porch (later insertion). One of original doors and doorframes appears to have been utilized as external door. Comprises timber partition wall on E with Gyproc covering. W wall equals original masonry. S and N walls also recent.
221	2 nd	3.38m	2.68m (arched recess)	Square area entered by arched doorway, no door, from 206. Allows entrance to WC and kitchen. Original plaster moulding round arched entrance. Original doorframes elsewhere. No cornice. <i>(Flat 1)</i>
222	2 nd	3.42m		Eastwards extension of 204 allowing access to kitchen and WC. <i>(Flat 1)</i>

Appendix 2: Registers

Photographic Register

Image No.	Digital	Description	From	Date
01	001	S facing elevation of building	SW	27/03/08
02	002	W facing elevation of building	SW	27/03/08
03	004	General view of building	SW	27/03/08
04	005	General view of 107	NE	27/03/08
05	006	107 – W wall, S end	NE	27/03/08
06	007	107 – W wall, N end	SE	27/03/08
07	008	107 – W wall, detail of timber paneling at window	SE	27/03/08
08	010	107 – W wall window	ENE	27/03/08
09	011	107 – Detail of cornice NW corner	S	27/03/08

				cupboard in W wall. Doorway into 204 is original door and doorframe. Kitchen. <i>(Flat 1)</i>
203	2 nd	3.38m	2.28m	Original ceiling height with intact cornice. Original fireplace on N wall. W of fireplace is cupboard. Windows original sash and case. Original doorframes and doors. Once formed sitting/room/parlour. <i>(Flat 1)</i>
204	2 nd	3.36m	2.17m (front door)	Entrance hall. Original ceiling with intact cornice. Arched entrance into E extension 222 (height of recess – 2.67m). Original doorframe into 203. Entrance door onto landing is a modern insert although original frame survives, though in poor condition. <i>(Flat 1)</i>
205	2 nd	3.37m		Original cornice intact. Original sash and case window with original timber surround. Original skirting and doorframe. Former bedroom <i>(Flat 2)</i>
206	2 nd	3.37m	2.22m	Hallway for property. Cornice intact. Cupboard at S end with original door and doorframe. Front doorframe survives in poor condition. Later insert and smaller door have been added to replace original. <i>(Flat 2)</i>
207	2 nd	3.36m		Original ceiling height with intact cornice. Original sash and case window survives with incised decoration on upper panes. Fireplace evident with 1930s tiled fire surround. Original skirting, door and doorframe. Probably comprises former dining room/parlour. <i>(Flat 2)</i>
208	2 nd	3.42m	2.28m	Cupboard recess at E end of S wall with plinth of fireplace adjacent. Intact bed recess at W wall. Ceiling at original height, lowered in bed recess. Sash and case window intact. Former site of kitchen. <i>(Flat 2)</i>
209	2 nd			Modern WC in same location as original. Intact sash and case window. Door mouldings and doorframe original. <i>(Flat 2)</i>
210	2 nd	3.32m	1.98m	Original ceiling height, but no cornice is present. Fireplace in NW corner, plastered over (?) but plinth in situ. Original sash and case windows. Recent work has exposed lintels over both windows. <i>(Flat 3)</i>
211	2 nd	3.34m	1.98m	Room has modern subdivision for insertion of shower. N half plain original floorboards. Cornice gone (if present originally). Much of ceiling original plaster. S half entered via doorway with interior dominated by shower tray. Original sash and case window survives but surrounding panelling appears removed. Doorway very low but mouldings appear to be original. <i>(Flat 3)</i>
212	2 nd	3.37m	1.98m	E, S and N walls are Gyproc so could be later. No cornice apparent but ceiling at original height. Original sash and case window survives with original timber panelling also surviving beneath sheet of laminate timber. <i>(Flat 3)</i>
213	2 nd	3.38m	2.28m	Room survives in largely undisturbed condition. Cornice intact. Original sash and case window survives. Original floorboards, skirting, door and doorframe. Probably was used originally as a bedroom. <i>(Flat 4)</i>
214	2 nd	3.42m	2.28m	Many original features survive underneath modern shelving. Ceiling height original with cornice intact. Original sash and case window with incised decoration in upper corners. Fireplace survives on E wall. Immediately to the S of fireplace is an arched recess, used for storage/cupboard. Doors and doorframe appear original. Probably originally used as a sitting room/parlour. <i>(Flat 4)</i>
215	2 nd	3.39m; 3.39m (bed	2.28m	Rectangular in plan with bed recess projecting to S. Entrance to bed recess has been reduced in size to form cupboard with doorway. Location of fireplace evident on E wall with stone plinth still in situ.

105	1 st			Original layout denoted by presence of cornice (intact). Original timber paneling around window. Doorway recent insertion. Probably a bedroom. (<i>Flat 6</i>)
106	1 st	3.31m	1.89m	Original layout denoted by presence of cornice. Doorway recent modification. Timber panelling survives around windows. (<i>Flat 6</i>)
107	1 st	3.3m		Plaster cornice survives intact. Original fireplace on N wall. 2 doorways in E wall – N doorway altered. Probably the living room/parlour. (? <i>Flat 8</i>)
108	1 st	2.27m		Ceiling lowered. Original doorway in NW corner – now blocked and new entrances inserted. Layout of room probably doesn't match original plan (? <i>Flat 8</i>)
109	1 st	2.27m	1.89m	Ceiling lowered, obscuring window. Original timber detailing around window may survive in situ. Door, door mouldings and skirting modern. Layout of room may not match original plan. (? <i>Flat 8</i>)
110	1 st	3.31m		Plaster cornice survives. Timber panelling around window appears to be <i>in situ</i> with original timber frame sash and case windows. Original timber work, door and doorframe. Probably a bedroom. (<i>Flat 7</i>)
111	1 st			Ceiling height unaltered. Original plaster cornice. Original door, doorframe and skirting. Original timber panelling around window is <i>in situ</i> . Probably the living room/parlour. (<i>Flat 7</i>)
112	1 st	3.3m		Kitchen. Sub-divided with lowered partition. Interior much modified with fireplace probably concealed behind timber laminate obscuring E wall. Subdividing wall between this room and 113 is later, but doorway appears to be original. (<i>Flat 7</i>)
113	1 st	3.32m		Recent subdivision between this room and 112. Original door and doorframe. Original timber surround around window. Now converted into toilet facilities. (<i>Flat 7</i>)
114	1 st	3.34m	2.27m	Original site of WC. Original door and doorframe. Original skirting. Timber panelling around window survives over most of extent. (<i>Flat 7</i>)
115	1 st	3.33m		Hallway, probably associated with one individual property with entrance from Nelson Street. Self-contained nature of cornice suggests that what survives as an aperture into 116 was originally a doorway. (<i>Flat 7</i>)
116	1 st	3.54m		Forms modern vestibule for entry from Nelson Street and may reflect an earlier entrance. Doorway onto stair is modern. Doorway at E side may be the site of the original entrance. (<i>Flat 7</i>)
117	1 st	2.33m(W); 2.7m(mid); 3.54m(E)		Original corridor for property, accessed from Nelson Street entrance. Much evidence of modification is apparent, both in layout and general appearance. All doorways appear to be modern insertions. Traces of the original doorway to 107 still evident, and an earlier, now superseded, doorway to 101 still survives, too. (? <i>Flat 8</i>)
118	1 st		1.99m (into 101)	Original layout with cornice intact. Original doorway evident in 104. Doorway into 103 is a recent insertion with original doorway (now blocked) leading into 102. Blocked doorway at S side, E wall once led directly onto stair. S doorway later insertion. Lowered doorway into 101. Possibly originally L-shaped with extension to E now occupied by extension to 102. (<i>Flat 3</i>)
201	2 nd	3.54m	2.28m	Original site of WC. Original doorframe and mouldings, original skirting. Original sash and case window. Ceiling height original. No cornice. (<i>Flat 1</i>)
202	2 nd	3.42m	2.28m	Bed recess to N of W wall and cupboard to S of this feature. Fireplace in centre of N wall on original stone plinth. Cupboard to E of fireplace with original door and doorframe. Original doorway to

Appendix 1: Rooms

Within this appendix a standardised set of data pertaining to the rooms is presented.

Room No.	Floor	Height of Ceiling	Height of Doorway	Description
001	Ground			Stairway. Extends 3 storeys. Brick built exterior wall with stone treads and cast iron balustrade with hardwood handrail.
002	Ground			Stairway. Extends 3 storeys. Stone treads and cast iron balustrade with timber rail. Cornice marks original entry of 2 nd floor properties, now obscured by 220. Entrance to 1 st floor modified in recent times.
003	Ground			Modern WC in location of earlier WC. Window, window surround, door and doorframe still intact original. Service for shop 006
004	Ground	2.42m (orig.3.49m)		Entrance close. Much modified with lowered ceiling.
005	Ground			Not inspected. Back room of modern shop 006.
006	Ground			Not inspected. Currently in use as a florist's shop.
007	Ground			Access from 001 to communal yard, once forming part of 001, now enclosed by later partition wall.
008	Ground			Not inspected. Space currently in use as a newsagent's.
009	Ground			Not inspected. Back room of modern shop 008, comprising the entrance corridor for stair 002 and, possibly, a room. (?Flat 9)
010	Ground			Not inspected. WC for modern shop 008, occupying original location of WC. (?Flat 9)
011	Ground			Not inspected. Currently used as a store by occupants of modern shop 008. (?Flat 9)
012	Ground			Not inspected. Currently inaccessible. (?Flat 9)
100	1 st			Area of voided space below stairwell.
101	1 st	3.31m	2.23m (into 001); 1.99m (into 118)	Original layout gone, but originally comprised kitchen and hallway (cf. 201). Previous subdividing wall now entirely removed. All doorways appear to be recent insertions. Recess at E end, S wall is a cupboard. Original exterior walls remain. Timber panelling around window gone. (Flat 6)
102	1 st			Original site of WC, now extended to incorporate extension of former hallway (cf. 222). Original doorway to 103 is still extant (now blocked). Arched recess evident over modern doorway (height of recess – 2.64m). Timber panelling around window survives in upper portion. (Flat 5)
103	1 st			Ceiling lowered. No original features evident. Original doorway through to 102 can still be seen in 102. This appears to have been the kitchen (c.f. 202) – new doorway has been inserted into former cupboard/bed recess. (Flat 5)
104	1 st	2.32m	2.23m	Lowered ceiling. Interior completely modern. Outline of original doorway remains extant on exterior. Original timber panelling around windows. Recess in NW corner original. Probably the living-room/parlour. (Flat 5).

Both communal stairs also survive in a largely unaltered condition, with intact corning at the ceiling and a largely *in situ* cast iron balustrade and timber handrail.

6 References

Documentary

- | | | |
|--|------|---|
| Austin-Smith: Lord LLP/
East Ayrshire Council | 2007 | <i>Kilmarnock John Finnie Street And Bank Street Conservation Area Appraisal and Area Management Plan</i> |
| Close, R | 1992 | <i>Ayrshire & Arran: An Illustrated Architectural Guide</i> RIAS (Edinburgh) |
| Historic Scotland | 2008 | Extract from Statutory List, Kilmarnock Burgh |
| McKinlay, J, Strong, D & Hamilton, A | 1839 | <i>Parish of Kilmarnock.</i> Old Statistical Account Of 1834-45 |
| RCHME | 1996 | <i>Recording Historic Buildings: A Descriptive Specification</i> , Third Edition. Interprint Ltd. |
| SODev | 1994 | <i>National Planning Policy Guideline 5, Archaeology and planning</i> , Scottish Office Development Department. |
| SOEnv | 1994 | <i>Planning Advice Note 42, Archaeology</i> , Scottish Office Environmental Department |
| Strawhorn, J & Boyd, W | 1951 | <i>Ayrshire. The Third Statistical Account of Scotland</i> Oliver and Boyd (London) |
| Turner Simpson, A, & Stevenson, S | 1981 | <i>Historic Kilmarnock: The Archaeological Implications of Development</i> Scottish Burgh Survey, Dept. of Archaeology, University of Glasgow (Glasgow) |

Cartographic

- | | | |
|------|-----------------|---------------------------------------|
| 1819 | John Wood | Plan of the Town of Kilmarnock * |
| 1856 | Ordnance Survey | County Series Map 1:2,500 – 1 sheet * |
| 1897 | Ordnance Survey | Ayrshire 1:10,560 * |

4.8 *The Rear Court*

- 4.8.1 The communal area to the rear of the property still survives very much intact. In the N, it is bounded by a brick boundary wall with triangular-sectioned glazed ceramic coping. The remains of brick cross-walls project southwards from this feature at regularly spaced intervals, perhaps representing the remains of coal bunkers. Various outbuildings abut the E boundary wall in a lean-to arrangement. Perhaps the most noteworthy of these is the northernmost structure, the washhouse. This was not inspected closely, but it was clear that most of its original fixtures survive *in situ*, including a sandstone sink/trough and a cast iron boiler, and these should be considered for more detailed recording at a later date. Lying adjacent to the washhouse are two storage areas of similar style and size. All three structures are built of fair-faced buff brick. A slate roof still survives *in situ* on the washhouse, though the adjacent sheds are now roofed with sheets of corrugated iron (Figure 4b).

5 Conclusion

- 5.1 A programme of archaeological building recording was undertaken in respect of the proposed development at 100-106 John Finnie Street, Kilmarnock (NGR NS 3336 4433). The archaeological building recording was carried out over a two day period from the 27th to the 28th of March, 2008.
- 5.2 The building that occupies 100-106 John Finnie Street, Kilmarnock is a 3-storey, 4-bay by 5-bay structure, L-shaped on plan. It forms an integral part of John Finnie Street, a planned street which was first surveyed in the 1860's. Progress in completing the project was slow, with work continuing throughout the late 19th century and into the early 20th century. The building discussed here dates to 1876 and is Italianate in style, with a facade finished in a manner consistent with the remainder of the contemporary 19th century street frontage, i.e. in coursed red sandstone.
- 5.3 It comprises a ground floor originally occupied by commercial premises (and still used for the same), with a further two floors of accommodation above. The original layout of the second floor survives largely intact, comprising at least three, and probably four individual flats. These are accessed by way of two stairs, one providing access for two flats from John Finnie Street, the other (now blocked at the ground floor entrances) allowing access for two flats from Nelson Street. A similar arrangement appears to have been in place for the 1st floor, but recent alterations have now transformed this part of the building completely.
- 5.4 Many of the so-called 'public' rooms (e.g. parlours, hallways and bedrooms) could be identified by their original cornicing (Figure 5e), which appeared to be a consistent feature throughout. Some alteration to ceiling height is evident, but on the second floor in particular, and also the E portion of the Nelson Street Block on the 1st floor, ceiling heights remain largely unaltered. Similarly, the door frames and doors show similar variation in terms of their preservation. Some retain the original doors and associated frames, which are higher by approximately 25cm and often demonstrate ornamental mouldings around the door-frame and panelled doors (e.g. Flats 1 and 4), while in others new, smaller doors and door-frames have been inserted. Survival of the original skirting was sporadic; in general, where other features such as cornicing, ceiling height and doorways remained unchanged, the skirting, too, had survived *in situ*. Enough remained in some cases (Flats 3 and 7 in particular) to conclude that the style of skirting was consistent throughout the flat, with no additional embellishment of this feature in the public areas. Original bed recesses survive in two rooms on the 2nd floor (202 and 211) and elsewhere a number of cupboards and alcoves are still present which date back to the original build. Fireplaces are, however, extremely scarce, with only two original cast iron fire surrounds remaining *in situ*, in rooms 203 and 107 respectively. The original sash-and-case windows are *in situ* throughout, though their condition varies from what appears to be good to extremely dilapidated (e.g. Room 208). In the majority of cases, these survive with the timber panelling around the margins remaining virtually intact, though in many cases this has been obscured beneath a layer of hardboard.

- 4.6.5 The access to the 1st floor of the Nelson Street block, like that of the 2nd floor, has been substantially altered in recent years. Again, there were suggestions that entry to the property was through doors set to E and W of an inner vestibule extending back from the 1st floor landing of 002, a situation comparable with 219 above. It was unclear whether this suite of rooms comprised a single flat with multiple public rooms, or, once again, two smaller flats as was suggested for the second floor. It may even be the case that the E part of this floor was a flat, while the W represented office accommodation associated with the commercial property below. The fact that so many changes have taken place on those rooms to the W of the original Nelson Street entrance strengthens the argument that this floor was occupied by two different properties, as the rooms to the E remain relatively intact.
- 4.6.6 The rooms to the east of vestibule 116 comprised 110, 111, 112, 113, 114 and 115. 115 was the hallway, which ran from ENE to WSW, allowing entry into the kitchen (112), where a bed recess survived *in situ*. The kitchen had, however, been reduced in size to allow for the insertion of a second WC, 114, as part of recent modifications. Immediately to the W of 114 was 113, the original WC, and to the W of this a cupboard which had been built into the N wall of the hallway. The space within this cupboard was compromised by the curve of the adjacent stair. Leading off to the S of 115 were the public rooms, the parlour/sitting room (111) and the bedroom (110). Parlour/sitting room 111, bedroom 110 and hallway 115 all featured a cornice, similar to the others previously identified.
- 4.6.7 The rooms at the W end of the Nelson Street 1st floor level are more difficult to interpret. Whether this group can in fact be described as a separate flat is difficult to determine – it is possible, for instance, that they represent instead a block of office accommodation associated with the commercial premises below. The variety of room size observed in Flat 4 (second floor) is not replicated here, but there was much evidence of alteration. Hallway 117, which runs in the same ESE-WNW axis as 115 and which was interpreted as a separate ‘room’ on account of vestibule 116, leads into three rooms, 107, 108 and 109. 107 may have been the parlour, as it features a moulded cornice and a cast iron fire surround (Figure 5d). However, the current layout of 108 and 109, which appears to represent a later attempt to rationalise space for office use, gives little indication of the original room layout. It is possible that the presence of a blocked doorway at the W end of the N wall of 108 is indicative of an original layout which reflected that still surviving in the second floor above, and this would be more indicative of tenement accommodation than office space.

4.7 *The Interior of the Building – Ground Floor*

- 4.7.1 The ground floor of the building is currently in use as commercial premises; with much of the backroom area now used as storage, access was restricted. Some conclusions can, however, be reached regarding the original function and layout of the ground floor rooms. Stair 001 had been altered through the insertion of a recent partition wall that restricted access to the communal yard at the rear, creating an additional enclosed corridor, 007. The ceiling of the entrance corridor 004 had also been lowered in recent times. However, the WC (003) serving the florist’s shop (005 & 006) still occupies its original location, and it can be surmised that the front-of-shop and backroom areas in this particular premises reflect the original arrangement.
- 4.7.2 By contrast, the section of the building occupied by the newsagent (008) showed signs of significant modification. Stair 002 has been modified through the addition of partition walls flush with the base of the staircase. This modification appears to be associated with the blocking-off of the Nelson Street entrance, and has allowed the original close to be absorbed into backroom/storage area 009. WC 010, which currently serves the newsagent’s shop 008, does however appear to occupy its original location. It is likely that the layout of 006 has been altered considerably, with an expansion of the commercial ‘front-of-shop’ area at the expense of what was once an associated service area. It is possible that the area occupied by 009, 010, 011 and 012 in fact represents the vestigial remains of another flat, comprising two public rooms, kitchen and WC, which was accessed by the Nelson Street entrance and which lay E of the N-S entrance corridor.



Figure 5a: Blocked Entrance, Flat 5 (1st Floor)



Figure 5a: Infilled Arched Entrance, Flat 5 (1st Floor)



Figure 5c: Former Kitchen/WC Area 101 (Flat 6)



Figure 5d: *In Situ* Fireplace, Room 107



Figure 5e: *In Situ* Cornice, Room 213 (Flat 2)



Figure 5f: *In Situ* Timber Panelling, Room 104. Flat 1

- 4.5.6 Flat 4 is the westernmost flat and comprises rooms 210, 211, 212 and 218. It appears to have originally been a self-contained unit, as one of the rooms, 211, now used as a shower, is of similar dimensions as the other WC's noted elsewhere. No rooms had evidence of a cornice which would indicate their use as a public space; it seems likely that such features would once have survived and that they have since been removed (it should be noted, however, that the ceiling heights in all these rooms except 218 are consistent with their original dimensions). Presumably the room to the E of 211, 212, was the kitchen, though unfortunately, no details remain which could argue as to whether or not this was the case. There was no evidence of a fireplace, the room being filled with discarded boxes of paper which obscured most of the floor.
- 4.6 *The Interior of the Building – 1st Floor*
- 4.6.1 The layout as described in Section 4.4 above appeared to survive in a largely unaltered form on the second floor. The same could not be said, however, for the first floor, where there was major evidence of alteration. Vestigial traces of the original layout were, however, evident, which argued that this floor was laid out in a virtually identical fashion to that already described above.
- 4.6.2 Flat 5 was the northernmost of the first floor flats, and lay in a corresponding position to Flat 1 described above. It comprised rooms 102, 103, 104 and 118. The original entrance into 118 had been blocked, with the original door-frame surviving *in situ* (Figure 5a), and the S wall of 118 broken through to allow access from the hallway of the adjacent flat, which has now been incorporated into open plan area 101. The toilet represented in Flat 1 by 201 had been extended to incorporate the E extension of 118 (the equivalent of 222) in order to accommodate a shower. The equivalent of the arched entrance, noted previously as defining the entrance into 222 from 204, still survived, though it had been infilled and a modern, smaller doorway inserted (Figure 5b). In addition, the original doorway from the E ext of the hallway into the adjacent kitchen (here numbered 103) had been superseded (though it still remained extant) and a new doorway broken through what had originally been the cupboard/bed recess area, which has now been entirely removed. The public room, 104, remained largely intact, with cornice and cupboard in NW corner surviving *in situ*. The fireplace had, however, been removed.
- 4.6.3 Flat 6 was the southernmost of the two flats occupying the 1st floor of the John Finnie Street block, and it showed further evidence of alteration. Entrance to the property is obtained through the original doorway, though the door itself has been removed, and a smaller replacement inserted within a modern infill set within the original frame. The hallway has been entirely removed, however, with the hallway, E ext to hallway and kitchen (c.f. Flat 2, as described previously) now amalgamated into open space area 101 (Figure 5c). The only surviving features which can be compared with the overlying flat are the cupboard in the E end of the S wall, and the skewed E end to the E-W wall that once divided kitchen and toilet. The area that would once have been the toilet now survives as void 100, but the presence of an angled plasterboard soffit suggests that this space was once used as a stair, perhaps providing direct access to the 1st floor from the commercial premises below (Drummond, *pers. comm.*). The public rooms, 105 and 106 (which are equivalent to rooms 205 and 207 respectively in Flat 2, above) can be identified as such by the presence of a cornice, which remains intact and unaltered in both rooms. A 1930's Art Deco inspired fireplace remains *in situ* in the parlour, 106.
- 4.6.4 Throughout Flats 5 and 6, the doorways have been substantially altered, with new smaller frames and doors added. A doorway has also been inserted in the S wall, allowing access into the Nelson Street block.



Figure 4a: Exterior, E-Facing Elevation



Figure 4b: Wash-house, Outbuilding & Perimeter Wall



Figure 4c: Entrances to Flats 1 & 2 (John Finnie Street)



Figure 4d: Flat 2, Arched Entrance to WC/Kitchen



Figure 4e: Cupboard and Fireplace, Kitchen 209, Flat 2

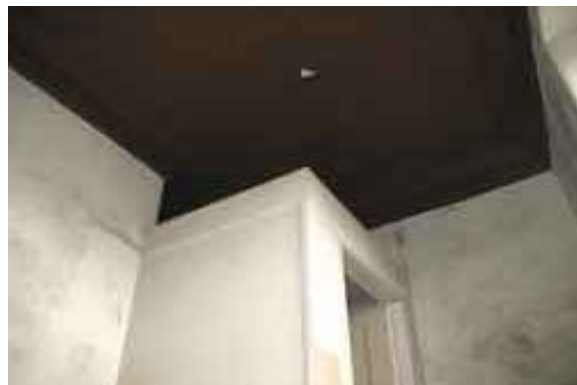


Figure 4f: Entrance to Flats 3 & 4 (Nelson Street)

4.5 *The Interior of the Building – 2nd Floor*

- 4.5.1 The first block of accommodation to be discussed – Flats 1 and 2 - were originally accessed by the John Finnie Street close. The entrances to these are located on the 2nd floor landing of stairway 001 (Figure 4c), which is a rectangular stone stair with a largely original cast iron balustrade style banister with a timber handrail. The entrances to Flats 1 and 2 are in their original location, with the original door frames still *in situ* (though now in poor condition). These doorways have been reduced in size through the insertion of a timber infill, and a smaller door and frame inserted.
- 4.5.2 Flat 1 is the northernmost of these 2 properties, and comprises Rooms 201, 202, 203, 204 and 222. The front door opens into a small hallway, 204, which features a cornice moulding around the extent of its ceiling. It runs N-S and has an E extension, 222, accessed through an arched entrance. 222, which has no associated cornice, allows access in the E to the WC, 201 (in this particular building, all the original WC's were located indoors), and in the N, to the kitchen, 202. The kitchen has an extant bed recess in the W with an adjacent cupboard to the S of this, and an additional cupboard to the E of the fireplace in the N wall. The fire surround is modern. There is one public room, 203, which leads W off 204. It can be characterised as such by the presence of a cornice. This latter feature is fairly plain in character, comprising several parallel mouldings of varying thickness. The original fire surround, which is cast iron, remains *in situ*, with a cupboard recess to the W.
- 4.5.3 Flat 2 comprises rooms 205, 206, 207, 208, 209 and 221. Again, its original layout remains unaltered. The entrance leads into a rectangular N-S hallway 206 with a cupboard at the S end, and again has an extension to E, which allows access to the narrow WC, 209, and kitchen 208 (Figure 4d). The kitchen, 208, in this instance is more irregular on plan, narrowing to the W; the N wall, between 208 and 209, is skewed at the E end to accommodate the window. This layout allows space for the bed recess, but in this instance, there is no adjacent cupboard, which is located instead, as noted previously, in the hall 206. A second cupboard recess is present at the E end of the S wall, and a now-blocked fireplace can also be identified (Figure 4e). In this instance, there are two public rooms leading off from the W of 206. The larger of these, 207, and also the southernmost, is presumably the parlour or sitting room, while the smaller represents a bedroom. A cornice, similar in character to that noted previously in 203, is present in both rooms, and in hallway 206.
- 4.5.4 Flats 3 and 4 are located on the 2nd floor of the Nelson Street block, but following the blocking of the ground floor access to stairwell 002, access must now be obtained via the John Finnie Street close and through the first floor level. Both flats are now accessed by a common entry into a small square vestibule, 220. However, the ceiling of this is much lower than that of the stair above, and the adjoining area beyond, 219 (Figure 4f). In addition, the cornice which decorates the ceiling of the stair disappears beyond into the area now occupied by 219 (where the ceiling has now been lowered inside the flat, making it impossible to see the termination of the cornice). It is likely, therefore, that 219 was originally part of the landing, with the entries to Flats 3 and 4 being at the E and W sides. Despite these alterations to the entrance area, one of the original doors has been retained and used as the main entrance to the inserted vestibule 220.
- 4.5.5 Flat 3 is the easternmost of these two flats, and comprises rooms 213, 214, 215, 216 and 217. 217 is the hallway, running roughly ESE-WSW. At its ESE end, doors lead off to kitchen, 215, and WC, 216. There is a bed recess in the S wall of 215, and the presence of a plinth in the E wall reveals the site of the fireplace. Leading off from the S side are the two public rooms, 214 and 213, which can be distinguished by the presence of a cornice (also present in hallway 217. 214 appears to be the parlour, as it has a cupboard recess in the S corner of the E wall. A fireplace survives *in situ*, but the fire surround is modern, perhaps dating to the 1950's.

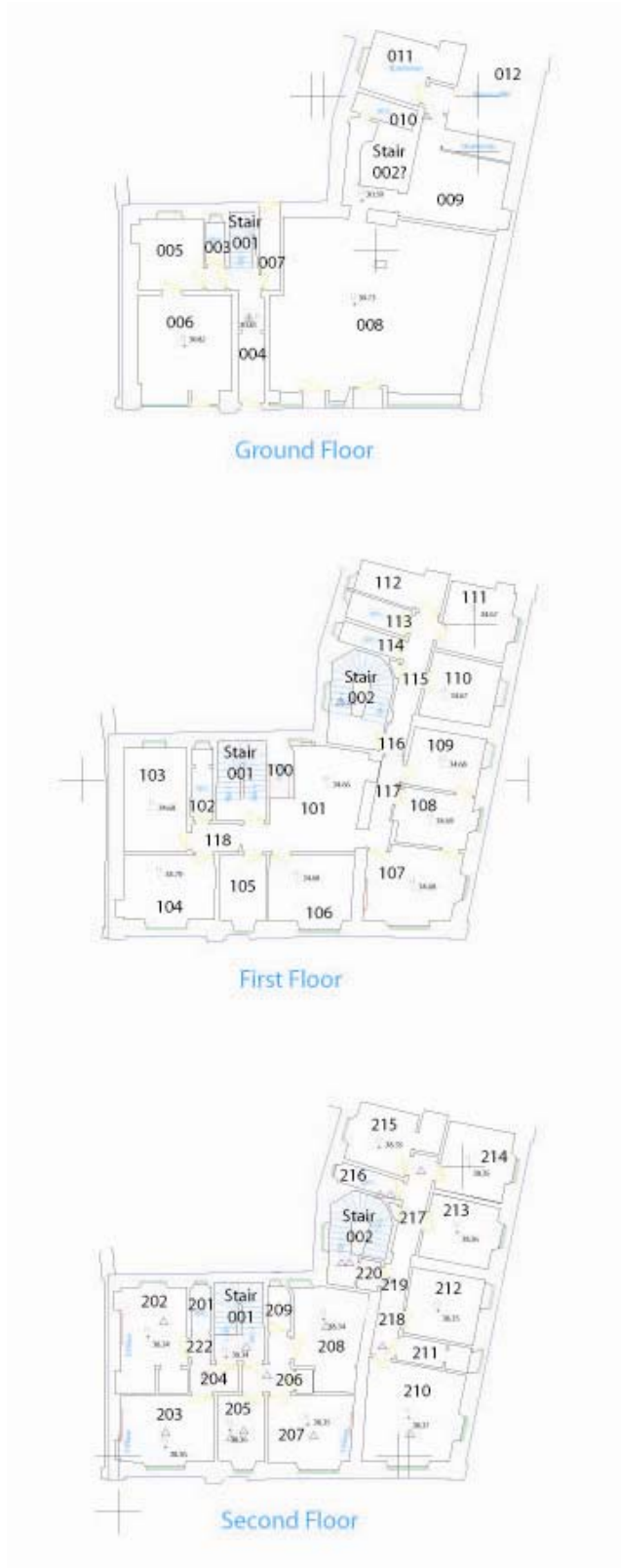


Figure 3: Annotated Plan of 100-106 John Finnie Street
(Based on Site Plans Created by Aspect Chartered Surveyors)

4.3 *The Exterior of the Building (Rear)*

4.3.1 The rear of the building contrasts with the more ornamental façade described for the W- and S-facing elevations above, in that it is composed of buff brick of a type and character consistent with a number of local sources (Drummond, *pers. comm.*). The E-facing elevation (Figure 4a) is not laid out in formal, regimented bays, though it can be argued that a loosely defined 4-bay arrangement is evident. Moving from S to N, 'Bay' 1 comprises a sash-and-case window, similar in dimensions to those used elsewhere, with a narrow window (the toilet) lying immediately adjacent. 'Bay' 2 is markedly broader than Bays 1, 2 and 3 and comprises the stair and a narrow window which again represents the toilet. Bays 3 and 4 each have a single sash-and-case window of the standard size. The arrangement described for Bays 1, 3 and 4 is repeated on each storey, though on the ground floor, the windows in 'Bay' 1 are now blocked. Only 2 of the large windows are present in 'Bay' 2. These overlook the stair well and are offset to half-landing levels between ground floor and 1st floor, and 1st floor and 2nd floor. At ground floor level is a door which allows access from the John Finnie Street flats to the communal ground lying to the rear.

4.3.2 As in the W section of the building, the stair forms an integral part of the S section, rather than occupying its own projecting bay. However, in this particular instance, the N-facing elevation is angled slightly to accommodate it. Again, the result is asymmetrical, with the E portion featuring a standard sash-and-case window to the E and a narrow window (toilet) to the W. The W portion has one standard sash-and-case window which illuminates the stair, but in this instance, the window is not offset onto the half-landing level as it was in the E-facing elevation. On the ground floor, the westernmost bay features a doorway rather than a window, which again have allowed access into the communal area to the rear. Doors and windows at the ground floor level have now all been blocked with brick infill.

4.3.3 All the windows have sandstone sills and lintels, with relieving arches also present in the brickwork above the large sash-and-case windows at 1st and ground floor levels.

4.4 *The Interior of the Building - General*

4.4.1 From the observations made in 4.2 and 4.3 above, it can be surmised that this L-plan building once comprised two entirely separate wings, served by separate closes with rear entrances which led into the communal yard or court (Figure 3). This should be borne in mind when interpreting the arrangement of rooms that now exists within the property. In discussing the interior, it has been decided to begin the detailed description of the extant remains and the associated discussion at 2nd floor level, for the simple reason that this is where the original layout has survived in a more or less intact form. After a general description of the layout, each flat will be described individually, with regards to the arrangement of its rooms and the original features surviving.

4.4.2 It is argued here that originally the 1st and 2nd floors in each block were once subdivided into 2 flats of varying sizes, giving 8 flats in all, though it is possible that the W portion of the Nelson Street block, 1st floor ('Flat' 8) would have comprised office accommodation associated with the shop below. Flats 1 and 2 comprise the 2nd floor flats in the John Finnie Street block, Flats 3 and 4 the flats in the Nelson Street block. Flats 5 and 6 were the flats originally located in the 1st floor of the John Finnie Street block, while Flats 7 and 8 were the flats originally located in the 1st floor of the Nelson Street block. The ground floor appears to have been largely occupied by commercial premises and their associated service areas, but there is evidence that an additional flat, Flat 9, also existed here.



Figure 2a: 100-106 John Finnie Street, W-Facing Elevation



Figure 2b: Detail of Inscription, 100-106 John Finnie Street, W-Facing Elevation

3.3 *Documentary and Archival Sources*

- 3.3.1 The desk-based assessment did not identify the presence of any sites protected for their archaeological or historical merit under the terms of the Ancient Monuments and Archaeological Areas Act 1979. The National Monuments Record of Scotland identified only the property itself (NMRS No. NS43NW 179) as significant of inclusion.
- 3.3.2 Much information still survives relating to the property at 100-106 John Finnie Street. The building is known as ‘Smith’s Buildings’, and is known to have been built in 1876. The architect is thought to have been William Railton, and the surveyor Robert Blackwood. It is believed to have been originally linked with the printing firm, Smiths, who later moved to larger premises further down Nelson Street. Early directories relating to the town note that in the 1930’s, the shop premises at 106, John Finnie Street were occupied by a stationer/tobacconist, J H Thomson, while 100, John Finnie Street was occupied by ‘William Brown, tailor and clothier’. Residents in the tenements above have included a carriage repairer, a joiner and a bond worker (Information above derived from Historic Scotland Statutory List). Further study of local archival material may reveal yet more detailed information concerning the building and its occupiers; such work is currently being undertaken at the Dick Institute and the Ayrshire Archives as a means of informing the development of a conservation statement (Drummond, *pers. comm.*)

4 Findings: Building Survey

- 4.1 100-106 John Finnie Street (NGR NS 4265 3784) is a 3-storey, 4-bay by 5-bay, L-plan building which occupies the corner of John Finnie Street and Nelson Street in Kilmarnock (Figure 2a). Its W-facing elevation, which is 4 bays in length, overlooks John Finnie Street itself, while its S-facing elevation, 5 bays in length, overlooks Nelson Street.
- 4.2 *The Exterior of the Building (Front)*
- 4.2.1 The façade is Italianate in style and composed of coursed red sandstone ashlar, identified by the British Geological Survey as consistent with a Ballochmyle/Mauchline source. Band courses define the 1st and 2nd storeys on the W- and S-facing elevations: these are not, however, continuous along the entire façade. Instead they terminate at the corners, which are defined by pilasters. Additional pilasters emphasise the middle 2 bays of the W-facing façade, which project slightly, but here the band courses continue uninterrupted. An inscription on the lower band course at the S corner on the W facing elevation reads ‘Smith’s Buildings Erected AD 1876’ (Figure 2b).
- 4.2.2 On the W-facing elevation (John Finnie Street), each bay of the 1st and 2nd floor has a bipartite sash-and-case window. On the 2nd floor, these are arched. The 2nd bay features, on both floors, a blind window on the right hand side of the bipartite feature. On the 1st floor, the blind window comprises a coating of black painted plaster to the rear of the glass. On the 2nd floor, however, the window is less well-finished, with brickwork clearly evident in the interior. This oversight is evidently original, as the layout of the flats inside remains unaltered.
- 4.2.3 On the S-facing elevation (Nelson Street), the windows are smaller, comprising 2-pane sash-and-case windows. On the 1st floor, these are segmental-headed, while on the second floor, they are arched. Windows were also present on Bays 1, 2, 4 and 5 of the ground floor, but these have now been blocked with an infill of red sandstone ashlar. The central bay was originally a doorway, also blocked.
- 4.2.4 The ground floor of the W-facing (John Finnie Street) elevation is now occupied by shops, a continuity of use which reflects the original arrangement of the building. To the N of the entrance to the domestic properties in Bay 2 is a 1-bay shop with a modern shop front. To the S of the entrance, the remaining bays are currently occupied by a newsagent; originally two discrete properties would have made use of this space, with the presence of doorways within the modern shop front revealing the earlier layout. The entrance to the domestic properties above is defined on either side by pilasters, with entry gained through a modern timber door.

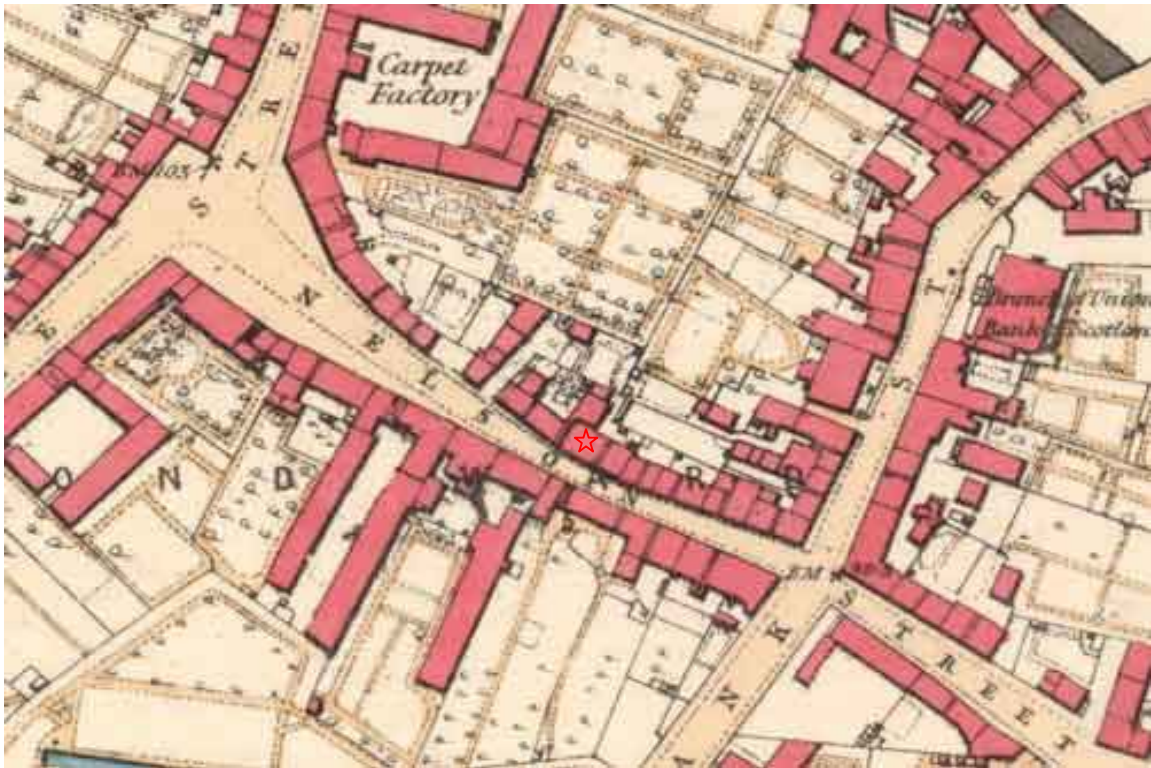


Figure 1a: 1st edition Ordnance Survey of Kilmarnock, 1859

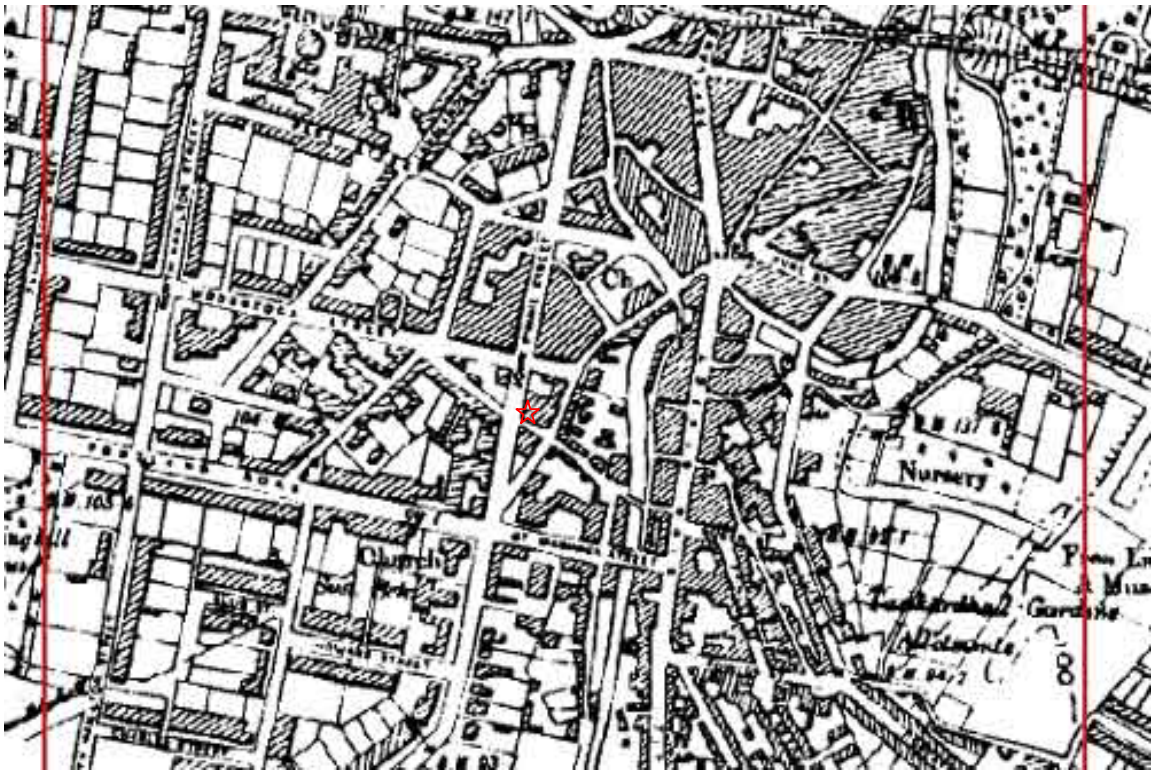


Figure 1b: 2nd edition Ordnance Survey of Kilmarnock, 1897

been made to impose an organised and regimented plan upon the town, with John Finnie Street representing one of the streets that emerged as a result.

- 3.1.3 John Finnie Street itself was a fairly late addition, a planned street intended to convey a suitable first impression of the town to visitors arriving via the railway station. The project started in 1864, with financial assistance from Kilmarnock-born merchant John Finnie. It was intended to be a major commercial and mercantile street, but growth was intermittent. The architectural styles of its buildings vary, but the impression given by the streetscape was originally consistent, a result of the fact that all the buildings dating to this initial phase of construction were fronted in red sandstone (Close, 1992, 103).

3.2 *Cartographic Evidence*

- 3.2.1 The earliest maps of Kilmarnock were surveyed decades before the creation of John Finnie Street, and reference to these shows the character of the original street plan, as well as providing a means of establishing the extent of the changes ensuing from the creation of the street in 1864. Wood surveyed the area in some detail in 1810; at this time, almost all of the elements shown in the Ordnance Survey 1st edition map of 1859 were already in place. However, it is the Ordnance Survey 1st edition map of 1859 which is illustrated here (Figure 1a), as it most clearly shows the arrangement of the land holdings as they were just prior to the imposition of John Finnie Street on the pre-existing townscape. In many respects, the street layout remained consistent; to the N, College Wynd runs NW-SE, bounding the SW edge of the burial ground/cemetery associated with the Laigh Kirk (1802), with Bank Street and Grange Street each following a roughly parallel, NE-SW course. Nelson Street linked these two streets, running between them in a roughly NW-SE direction. In this early street plan, John Finnie Street is conspicuous by its absence, as is Grange Place. The 1st edition Ordnance Survey map shows that by 1859, most of the street frontages were already occupied by buildings. However, there are large areas of open ground still remaining to the rear of these properties, which appear to have been laid out as gardens and parks.
- 3.2.2 The street layout as shown in Figure 1a and described above demonstrates the kind of piecemeal development that was a source of criticism in the early 19th century. The New Statistical Account (NSA) for Kilmarnock parish complains that the 'old streets of the town are narrow and inconvenient' (McKinlay et. al., 1839). In the early 19th century, the area around Bank Street, Nelson Street and Grange Street certainly seemed to encapsulate the kind of street plan that was subject to criticism in the NSA: the streets are very narrow and crooked in character, impeding progress through the town and no doubt creating an impression which was at odds with contemporary, post-Enlightenment thought. With the town's prosperity growing, in particular through the growing success of the carpet-weaving industry (McKinlay et. al. 1839), Kilmarnock was in a better financial position to instigate large-scale civic changes. By the time the 2nd edition of the Ordnance Survey in 1897 (Figure 1b), the imposition of a more organised street plan had taken place in the area shown in Figure 1a. Prominent amongst these new planned streets was John Finnie Street, a broad thoroughfare running from N-S, and terminating in the N at the newly constructed railway station building.

1 Introduction and planning background

- 1.1 Peter Drummond Architects, working on behalf of their client, Mr R Lindsay, are in the process of applying for planning consent regarding the forthcoming refurbishment at 100-106 John Finnie Street, Kilmarnock, East Ayrshire. The guidance for the Kilmarnock John Finnie Street and Bank Street Conservation Area Management Plan (Austin-Smith: Lord LLP/East Ayrshire Council, 2007) requires a programme of historic building recording works to be undertaken in association with these works. The scope and scale of these works are to be agreed through a Written Scheme of Investigation. The works are intended to assess any heritage management issues at an early stage in the project, and will generate a baseline record of the historic structure which will preserve by record the historic remains prior to redevelopment.
- 1.2 The building which occupies 100-106 John Finnie Street is a late-19th century commercial building built of red sandstone, standing 3 storeys high, and Italianate in style. It was built in 1876, on a street which was itself laid out in 1864 (Close, 1992, 103).
- 1.3 The West of Scotland Archaeology Service (WoSAS), who advise the East Ayrshire Council on archaeological matters, has provided guidance on the structure of Historic Building Recording works required on this site to inform the planning process. In particular they have specified a Level 2 survey in accordance with Recording Historic Buildings, A Descriptive Specification (RCHME Third Edition, 1996).
- 1.4 Rathmell Archaeology Ltd (Rathmell) was appointed by Peter Drummond Architects on behalf of Mr R Lindsay to act with regard to the archaeological issues.

2 Project Works

- 2.1 The programme of works agreed with the West of Scotland Archaeology Service commenced with the Level 2 building recording of 100-106 John Finnie Street prior to its extensive refurbishment. These works were undertaken in keeping with the agreed Written Scheme of Investigation with the on-site works taking place from the 27th to 28th of March 2008.
- 2.2 The historic building recording was carried out to include aspects of Level 2 (as per RCHME), see Written Scheme of Investigation (Rees 2008). Emphasis is placed on the compilation of a comprehensive photographic record which covers the building in varying levels of detail. The recording was facilitated by the provision of existing detailed plans from Peter Drummond Architects.

3 Findings: Desktop study

3.1 *Introduction*

- 3.1.1 The origins of the town of Kilmarnock are unclear, but it is thought that it originally comprised a settlement which sprang up in association with the medieval church that occupied the site now occupied by the Laigh Kirk (Turner, Simpson and Stevenson, 1981). It was erected into a burgh of barony in 1592 in favour of Thomas, fifth Lord Boyd, and by 1609 it was described by Timothy Pont, who visited the town while surveyed his celebrated map of Scotland, as being 'a large village and of great repaire'. (Strawhorn and Boyd, 1951). The town was traditionally connected with a prominent Ayrshire family, the Boyds, but this association came to an end when William Boyd, Lord Kilmarnock, was executed for his adherence to the Jacobite cause in the 1745 rebellion, allowing the town to develop in the subsequent Industrial Revolution without interference from the landed classes (Close, 1992, 98).
- 3.1.2 Kilmarnock's earliest planned streets date to only a few decades after Boyd's forfeiture and execution, with both Glencairn Street and Titchfield Street having been laid out in 1765 (Close, 1992, 113). At this time, development in the area around Bank Street and Nelson Street, the location in which John Finnie Street now lies was taking form in a more organic, *ad hoc* manner. It was only in the later 19th century that concerted efforts appear to have

Contents

1 Introduction and Planning Background	3
2 Project Works	3
3 Findings: Desktop Study	3
4 Findings: Buildings Survey	6
5 Conclusion	14
6 References	15
Appendix 1 - Rooms	17
Appendix 2 - Registers	20
Appendix 3 - Discovery & Excavation in Scotland	31
Contact Details	32

Figures

Figs. 1a-b	Maps: Current and historical	5
Figs. 2a-b	External Views of 100-106 John Finnie Street	7
Fig. 3	Annotated Plan of 100-106 John Finnie Street	9
Figs. 4a-f	Detailed Views showing Rear of Property & Interior Shots of 2 nd Floor	11
Figs. 5a-f	Interior Shots of 1 st Floor	13

Quality Assurance

This report covers works which have been undertaken in keeping with the issued brief as modified by the agreed programme of works. The report has been prepared in keeping with the guidance of Rathmell Archaeology Limited on the preparation of reports. All works reported on within this document have been undertaken in keeping with the Institute of Field Archaeology's Standards and Policy Statements and Code of Conduct.

Signed Date

In keeping with the procedure of Rathmell Archaeology Limited this document and its findings have been reviewed and agreed by an appropriate colleague:

Checked Date

Copyright Rathmell Archaeology Limited. All rights reserved.

No part of this report may be copied or reproduced by any means without prior written permission from Rathmell Archaeology Limited. If you have received this report in error, please destroy all copies in your possession or control and notify Rathmell Archaeology Limited.

This report has been prepared for the exclusive use of the commissioning party and unless otherwise agreed in writing by Rathmell Archaeology Limited, no other party may use, make use of or rely on the contents of the report. No liability is accepted by Rathmell Archaeology Limited for any use of this report, other than the purposes for which it was originally prepared and provided.

Opinions and information provided in the report are on the basis of Rathmell Archaeology Limited using due skill, care and diligence in preparation of the same and no explicit warranty is provided as to their accuracy. It should be noted and it is expressly stated that no independent verification of any of the documents or information supplied to Rathmell Archaeology Limited has been made.

**100-106 John Finnie Street:
Historic Building Recording**

Data Structure Report

by Louise Turner

issued 14th April 2008

revised 28th May 2008



Rathmell

Archaeology Ltd
