

Ramornie Quarry, Fife: Archaeological Evaluation

Data Structure Report

by Alan Matthews

issued 30th November 2009
reissued 18th December 2009



Rathmell

Archaeology Ltd

Quality Assurance

This report covers works which have been undertaken in keeping with the issued brief as modified by the agreed programme of works. The report has been prepared in keeping with the guidance of Rathmell Archaeology Limited on the preparation of reports. All works reported on within this document have been undertaken in keeping with the Institute of Field Archaeology's Standards and Policy Statements and Code of Conduct.

Signed

Date

In keeping with the procedure of Rathmell Archaeology Limited this document and its findings have been reviewed and agreed by an appropriate colleague:

Checked

Date

Copyright Rathmell Archaeology Limited. All rights reserved.

No part of this report may be copied or reproduced by any means without prior written permission from Rathmell Archaeology Limited. If you have received this report in error, please destroy all copies in your possession or control and notify Rathmell Archaeology Limited.

This report has been prepared for the exclusive use of the commissioning party and unless otherwise agreed in writing by Rathmell Archaeology Limited, no other party may use, make use of or rely on the contents of the report. No liability is accepted by Rathmell Archaeology Limited for any use of this report, other than the purposes for which it was originally prepared and provided.

Opinions and information provided in the report are on the basis of Rathmell Archaeology Limited using due skill, care and diligence in preparation of the same and no explicit warranty is provided as to their accuracy. It should be noted and it is expressly stated that no independent verification of any of the documents or information supplied to Rathmell Archaeology Limited has been made.

Contents

Introduction	4
Archaeological and Historical Background.....	4
Project Works.....	4
Findings.....	9
Significant Archaeological features	9
Artefacts	13
Modern Disturbance.....	13
Discussion	16
Significant Archaeological Features	16
Modern Disturbance.....	18
Recommendations	18
Conclusion	19
References	21
Documentary	21
Cartographic.....	21
Appendix 1: Trench Details.....	22
Appendix 2: Registers.....	33
Context Register	33
Photographic Register	36
Drawing Register.....	46
Appendix 3: Discovery & Excavation in Scotland	51
Contact Details	52

Figure:

Figure 1a: First Edition Ordnance Survey, 1856.....	5
Figure 1b: Second Edition Ordnance Survey, 1859	5
Figure 2: Trench Layout.....	6
Figure 3a: Eastern most area	7
Figure 3b: Central part of site	7
Figure 4a: Western most area	8
Figure 4b: Anti-tank obstacles (not in-situ)	8
Figure 5a: Feature (007).....	10
Figure 5b: Feature (008).....	10
Figure 6: SW facing sections through ditch (020).....	11
Figure 7a: Feature (010).....	12
Figure 7b: Feature (011).....	12
Figure 8a: Feature (018).....	14
Figure 8b: Feature (020).....	14
Figure 9a: Feature (026).....	15
Figure 9b: Features (013), (014) and (015)	15
Figure 10a: Pit containing modern glass	17
Figure 10b: Modern drain in Trench 26	17

Introduction

1. This Data Structure Report has been prepared for Angle Park Sand and Gravel Co. Ltd in respect to the archaeological evaluation in support of the proposed mineral extraction at Ramornie Quarry, Fife. The archaeological works were designed to mitigate the impact on the archaeological remains within the extraction area.
2. Fife Council has required a programme of archaeological works to be undertaken as a requirement of the extraction proposal. Fife Council Archaeology Unit, who advise Fife Council on archaeological matters, has provided guidance on the structure of the archaeological works required on this site during extraction works; this structure has been outlined in a Method Statement (Matthews 2009).
3. A desk-based assessment and walkover survey carried out by SUAT Ltd noted several sites of significance in proximity to the development area; most notably the Ramornie Designed Landscape and Lawfield Ring ditch, a Scheduled Ancient Monument outwith the extraction area to the south-east. Within the extraction area SUAT Ltd identified a potentially medieval drain to the north-east and anti-tank works to the west of the extraction area.
4. It is possible that additional buried and unrecorded remains of archaeological significance survive across the proposed extraction area, comparable to those identified by cropmarks nearby. The frequent discovery of prehistoric artefacts in the immediate vicinity suggests that further remains may be preserved within the proposed extraction area. There is also the potential for military remains as demonstrated by the World War II anti-tank ditch in the western half of the extraction area.
5. Rathmell Archaeology Limited has been appointed by Angle Park Sand and Gravel Co. Ltd to undertake the implementation of archaeological mitigation works during the extraction at Ramornie Quarry.

Archaeological and Historical Background

6. A detailed assessment of the cultural heritage resource present within the proposed extraction area was carried out as a precursor to this work. This was carried out by SUAT Ltd (Perry 2005). Cognisance of the contents of this document is presumed within this Data Structure Report. The proposed extractive area may have a direct physical impact upon two historic monuments:
 - a. potential medieval drain forming the boundary between the parishes of Collessie and Kettle; and
 - b. Fife Anti-Tank Line, which survives within the proposed extraction area as upstanding remains and a cropmark.
7. These historic areas have different issues of significance and substance. As such, each will be considered in turn to assess what archaeological significance is retained within them and what the limitations of our knowledge base are. Given the presence of known archaeological and historic sites within the surrounding landscape, potential exists for previously unknown features to be present within the proposed extraction area.

Project Works

8. The programme of works commenced with an archaeological evaluation undertaken via machine cut trenches which were initially to include 8% of the proposed extraction area, which measures some 10.5ha in extent. An initial target of 8400m² of trenching (approximately 4200 linear meters using a 2m bucket) was specified in the Written Scheme of Investigation. In total 4267.2m of linear trenching was excavated, which represented slightly more than 8% of the available extraction area (Figure 2).

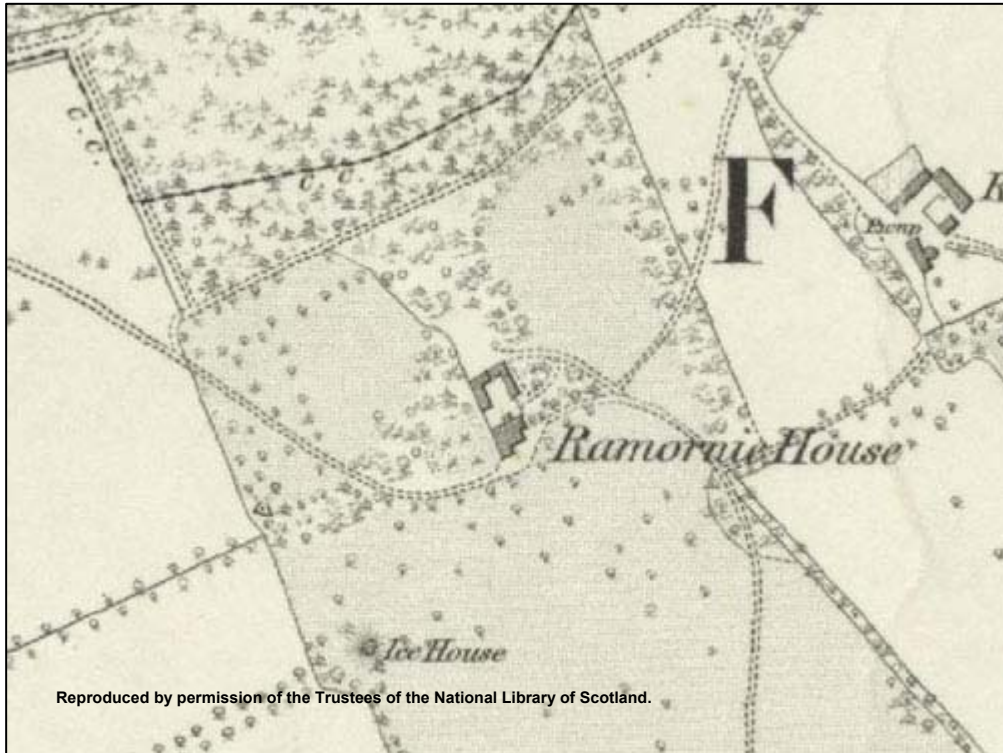


Figure 1a: First Edition Ordnance Survey, 1856



Figure 1b: Second Edition Ordnance Survey, 1859

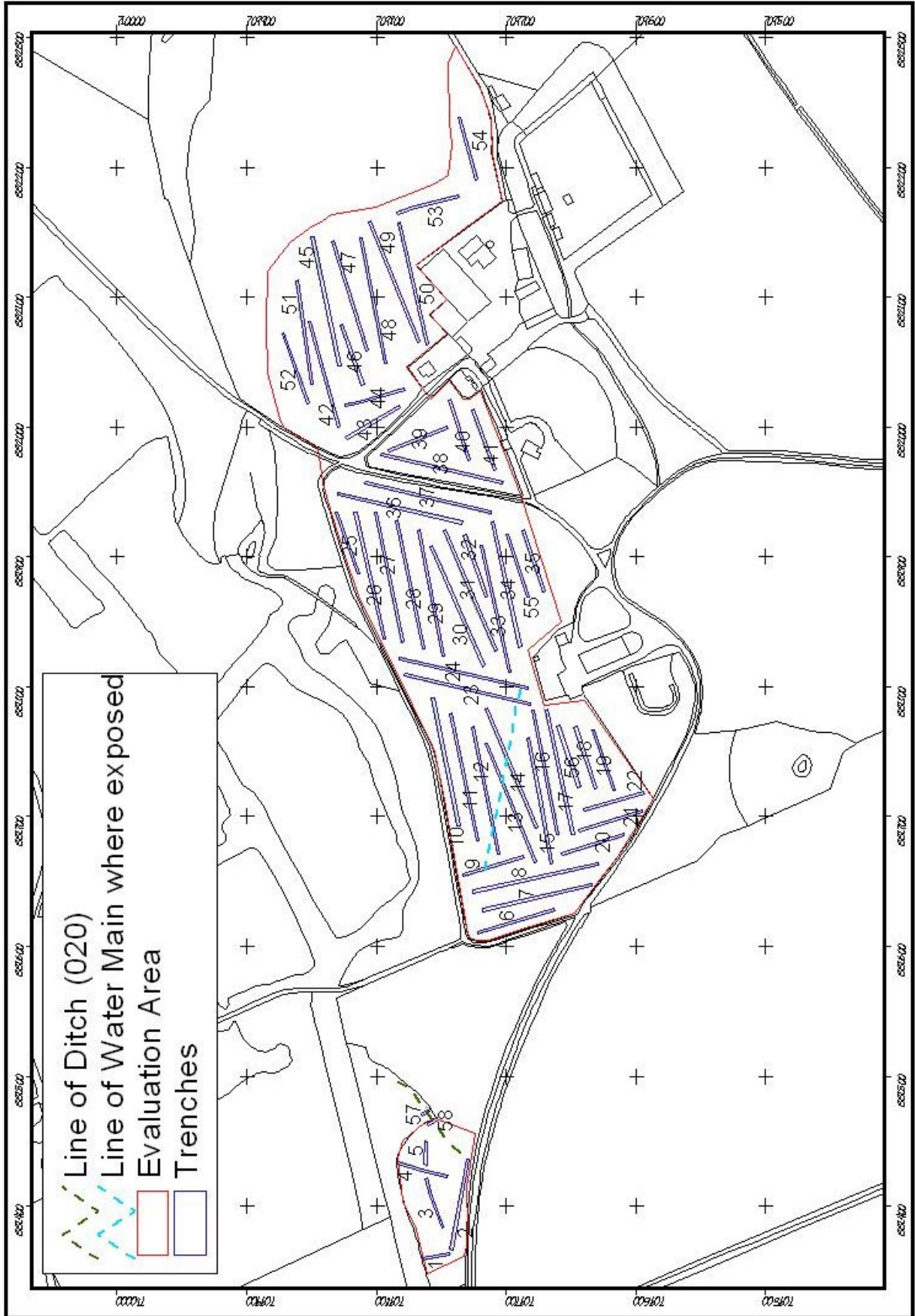


Figure 2: Trench Layout



Figure 3a: Eastern most area



Figure 3b: Central part of site



Figure 4a: Western most area



Figure 4b: Anti-tank obstacles (not in-situ)

9. Placement of the evaluation trenches was broadly in keeping with the trench plan submitted with the Method Statement (Matthews 2009). Alterations were made to the trench layout due a slight alteration in the available ground at the eastern end of the site, and due to the presence of trees and services at the western end of the site; however the proposed layout of trenches was adhered to where possible and the alterations were placed to give the widest possible coverage.
10. Any exposed features were investigated and evaluated to determine their archaeological significance, with the on-site works taking place from the 11th - 20th November 2009. All works were conducted in accordance with the Fife Council Archaeology Unit Standard Conditions, the Institute of Field Archaeology's Standards and Policy Statements and Code of Conduct and Historic Scotland Policy Statements.

Findings

11. Fifty-eight evaluation trenches were opened across the development area. Full descriptions of each are contained in the appendices at the end of this report. Included below is a synthesis of the findings from these and their interpretation. Included amongst them are two additional trenches placed across the possible anti-tank ditch in the westernmost portion of the site. When describing the features investigated, some interpretation may be included in the Findings for reasons of simplicity; however, the primary interpretation will be included in the Discussion.
12. The topsoil across the site (001) ranged between 300mm to 700mm in depth, though typically it was no deeper than 400mm. Prior to the commencement of archaeological work the site was agricultural land. The large central area (Figure 3b) is arable fields currently sitting as stubble; the easternmost field (Figure 3a) was being used as pasture and the westernmost area (Figure 4a)(around the possible anti-tank ditch) was partially wooded and had probably been rough pasture.
13. Unsurprisingly the subsoil was predominantly sand ((002)(003) and (004)) with some patches of sand and gravel (012) present. Evidence from Ordnance Survey mapping suggests that the central area (Figure 1a and 1b) had been modified in recent times including the placement and removal of roads, services and drainage and so disturbance from these works was expected. In addition there was expected to be disturbance from modern agricultural use of the entire site.

Significant Archaeological features

14. No significant archaeological features were observed during the course of the evaluation works. All potential archaeological features were investigated but nothing was recovered or observed to suggest any disturbance to the subsoil occurring earlier than the late 19th to 21st century. Several potential archaeological features were investigated but there were no indications of antiquity and no artefacts were recovered. Extensive disturbance, especially in the central area, was all convincingly of modern origin.
15. Archaeological works were carried out in a small area to the west of the main extraction area and although evaluation trenches were excavated here, the work was also carried out to locate and record the remains of Second World War anti-tank defences. Specifically two short trenches were placed over the location of the possible anti-tank ditch in order to record of its profile. In all two sections (Figure 6) were drawn at different locations and the line of the ditch (020) was recorded using DGPS (Figure 2). Related remains in the form of concrete tank obstacles (Figure 4b) were photographed to the north of the ditch but these had been moved in recent times and so were of limited archaeological value.



Figure 5a: Feature (007)



Figure 5b: Feature (008)

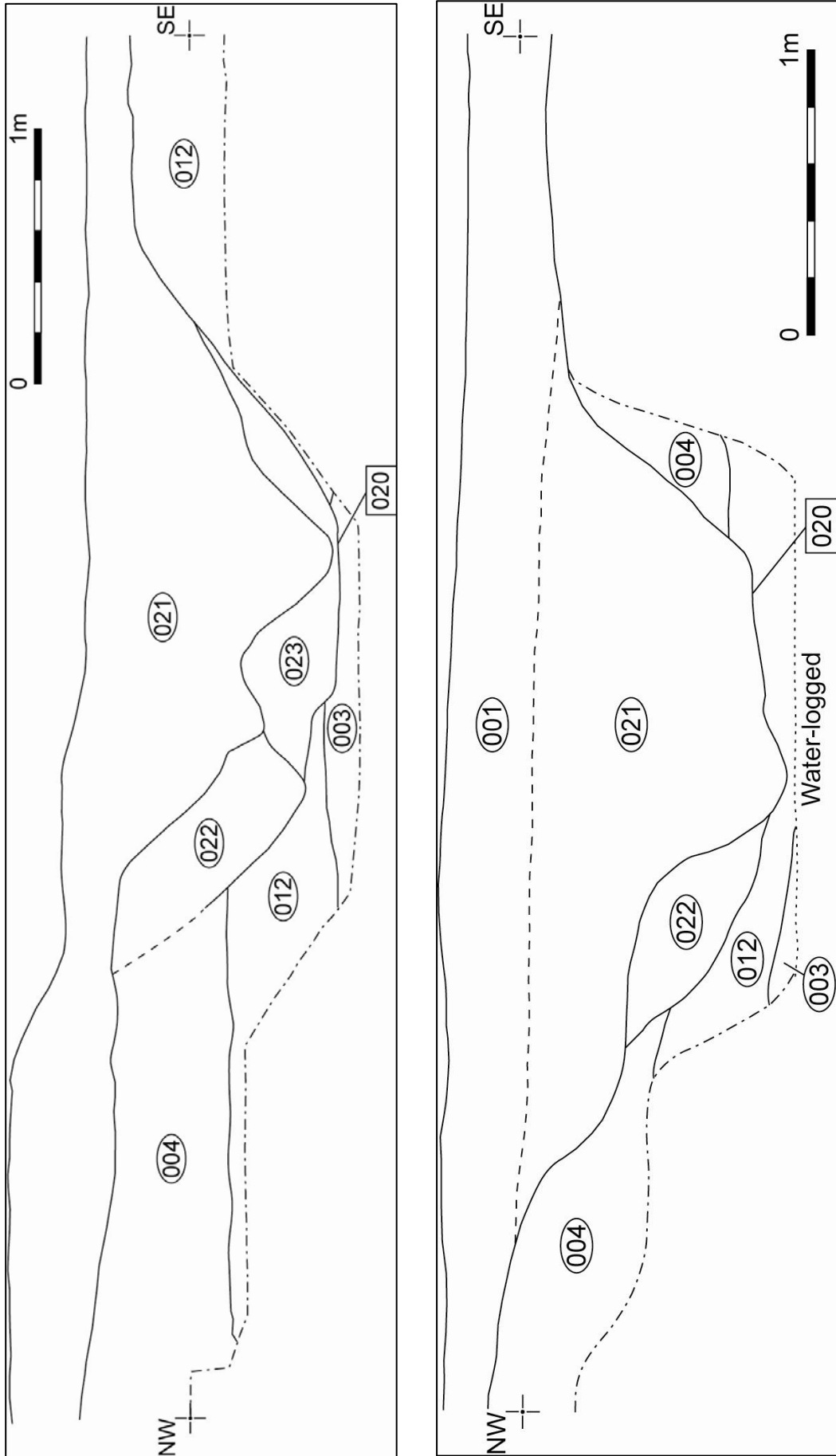


Figure 6: SW facing sections through ditch (020)



Figure 7a: Feature (010)



Figure 7b: Feature (011)

-
16. The excavation of the possible anti-tank ditch (020) (Figure 8b) revealed extensive disturbance of the sediments by tree roots. It would appear that trees, now in some cases removed, had grown extensively over almost the entire observable length of the ditch. The surviving profile suggests a ditch approximately 1.2m deep and 2.5m wide. The ditch was steep sided with a roughly flat base. The original fills of the ditch, (022) and (023), survived only on the western side at the base the remaining fill of the ditch was dark brown silty-sand (021) almost indistinguishable from the topsoil (001). No artefacts were recovered from the fills of the ditch. No evidence was recovered to support the idea that this ditch formed a part of the Second World War anti-tank defences and so the validity of this interpretation remains in doubt.

Artefacts

17. No artefacts were recovered during the evaluation though modern detritus (late 19th and 20th century material) was occasionally observed within the topsoil in all parts of the site. It is notable that material culture was absent from all excavated features; this may support the view that all of the features excavated resulted from agricultural disturbance and other farm workings rather than domestic or industrial use of the ground.

Modern Disturbance

18. A large number of features were investigated and recorded within the evaluation trenches. However, as none of these features contained any anthropic material and none appeared to have a form or character that would characterise them as significant archaeology, we may group them under modern disturbance. A more detailed interpretation of these features will follow in the Discussion.
19. Evidence of ploughing could be seen over the entire site (with the exception of the westernmost area around the possible anti-tank ditch) as a result there were ploughscars at the base of almost every trench. In addition, it was often necessary to remove the first 50 to 100mm of subsoil in order to get a clean surface. Similarly, in almost all the trenches, there were signs that the upper layers of subsoil had been disturbed by animals. Animal burrows were evident in the subsoil in all parts of the site.
20. A large number of shallow linear features were observed in the evaluation trenches, especially in the central area. Typically these features were less than 100mm deep and in most cases 200mm or less wide. The fill of these features was very similar in composition to the Topsoil (001) and this supports the idea that they are of modern agricultural origin. All of these features were investigated as they were encountered but no diagnostic material was recovered.
21. It is clear that the central part of the evaluation area had been repeatedly modified in the last century. This is the area to the immediate north of what would have been the main estate house but is now a large barn. Adjacent to the barn a coach house and a slaughterhouse are still standing. Local knowledge suggests that the area around the barn was heavily modified in the last century and this is certainly borne out by the disturbance to the subsoil. In two locations; running north-east to south-west through the central area and running parallel to the water main (see below), there were bands of disturbed subsoil measuring more than 4m wide and less than 400mm deep. These bands were bounded by shallow linear ditches.
22. A long linear feature (011) (Figure 7b) ran almost the complete length of Trench 30 and also appeared in Trenches 23 and 24. This feature was investigated in multiple locations along its length to best characterise its nature. Its width was never more than 800mm and its depth never more than 300mm. However the profile was constantly irregular. In addition to the irregularity of the feature roots were very evident in the fill.



Figure 8a: Feature (018)



Figure 8b: Feature (020)



Figure 9a: Feature (026)



Figure 9b: Features (013), (014) and (015)

23. In some cases groups of features are worthy of mention. In the westernmost part of the site (Trench 2) three features appeared along the length of the trench. Features (024) and (025) were linear runs of shallow postholes; numbering three and five in total respectively. Each was about 200mm in diameter and 100mm deep containing grey silty sand fill. No anthropic material was recovered from either. In close proximity in the same trench, feature (026) comprised two linear features at right angles; both were 500mm across and 400mm deep. The fill of this feature was dark brown silty sand very similar to the topsoil.
24. Three shallow postholes, similar to those mentioned above, were recorded in Trench 28; feature (010) (Figure 7a). As before, these measured about 200mm in diameter and less than 100mm deep. No anthropic material was recovered from these postholes and their fills were very similar to the topsoil.
25. In the central part of the site, Trench 34 had three features in close proximity; (013), (014) and (015) (Figure 9b). Feature (013) was a half circle emerging from the north section of the trench. This feature was about 400mm in breadth and 200mm deep. The fill was similar in composition to the topsoil and no anthropic material was recovered. To the east of (013) two linear features, (014) and (015), ran north-south. Both were less than 300mm wide and 150mm deep.
26. Features similar to (014) and (015) were found in several parts of the site; e.g. (019) in Trench 12, (005) in Trenches 25 to 27, (008) (Figure 5b) in Trenches 26 and 27, (009) in Trench 27, (017) in Trench 47 and (018) (Figure 8a) in Trenches 48 to 50. These features fell into two categories; those which were less than 300mm wide and those which were between 300 and 500mm wide. In all cases they were less than 400mm deep, filled with dark brown silty sand similar to the topsoil. No anthropic material was recovered from any of these features.
27. There was solid evidence for the placement of modern services in the central part of the evaluation area. Despite the fact that the subsoil is made up of well drained sand ceramic drains were recorded in three locations, Trench 23, Trench 26 and Trench 34. Upon excavation two of the drains had ceramic pipes (Figure 10b) at their base and the other had a plastic pipe. In addition to the above a water main ran from the corner of the slaughterhouse to the north-west corner of the central area. This water main was recorded in several trenches; Trenches 8, 9, 12, 13, 14, 23 and 24.

Discussion

Significant Archaeological Features

28. No new significant archaeological features were uncovered in the course of the evaluation works and no anthropic material was recovered which would indicate use of the site prior to the 19th or 20th centuries. The extent of disturbance due to trees or animal burrows was limited to isolated areas and this proved easy to discount as potential features.
29. The only potentially significant feature recorded was the ditch (020). This feature was located in the westernmost part of the evaluation area and was associated with concrete anti-tank obstacles. On 27 May 1940 a Home Defence Executive was formed under General Sir Edmund Ironside, Commander-in-Chief Home Forces, to organise the defence of Britain. At first defence arrangements were largely static and focused on the coastline (the coastal crust) and, in a classic example of defence in depth, on a series of inland anti-tank 'stop' lines. The stop lines were designated Command, Corp and Divisional according to their status.



Figure 10a: Pit containing modern glass



Figure 10b: Modern drain in Trench 26

30. The anti-tank obstacles located within the proposed extraction area had been moved in recent times and so their original location is unclear. Investigation of the ditch demonstrated that it had been steep sided and with a roughly square base. The fills of the ditch had been heavily disturbed by trees. No artefacts were recovered from the ditch fills. It is doubtful that more may be gained by further examination of this feature.
31. Upon consultation with Fife Council Archaeology Unit it was agreed that the ditch investigated by the above trenches was not the anti-tank ditch noted from aerial photographs but was a drainage or boundary ditch related to long standing field boundaries. The most likely location for the primary anti-tank ditch is to the east of the boundary ditch in the area now removed by quarrying. The ditch investigated is likely to have been too slight to have been effectively used as a part of the anti-tank defences. The possibility does exist that it may have been enhanced to form a secondary part of the anti-tank defences but no evidence was recovered to support this.

Modern Disturbance

32. Examination of the features within the evaluation trenches shows a concentration in the central part of the proposed extraction area. This is unsurprising given that this area is immediately to the north of the location of the now demolished mansion house. Local knowledge suggests that this part of the proposed extraction area was repeatedly modified in recent memory and this is borne out by the results of the evaluation. The fact that no anthropic material was recovered from any of these features and in most cases the fill was indistinguishable from the topsoil (001) supports the suggestion that these features are the result of modern agricultural activity.
33. The shallow linear features found over almost the entire evaluation area are most likely to be of modern agricultural origin. The proximity of ploughmarks in similar parts of the site suggests that these features are the result of modern agricultural activity. This suggestion is supported by the lack of anthropic material recovered from any of the features.
34. Those more substantial linear features; (005), (008), (009), (014), (015), (017) and (018), also suggest a modern origin although no material culture was recovered from anywhere on site to confirm this. The presence on site of modern drainage and services suggests that multiple attempts may have been made to improve or change the use of the ground. This is especially true in the central part of the evaluation area in proximity to the site of what was once the mansion house. The two bands of disturbed subsoil running through the central part of the site were interpreted, upon excavation, to be the remains of farm tracks. The modern use and reuse of the central area is demonstrated in one large pit in Trench 33 which was entirely filled with broken glass (Figure 10a). When identifiable the glass was almost entirely wine and champagne bottles and so most likely relates to the later occupation of the mansion house.
35. In Trench 34 features (013), (014) and (015) were difficult to interpret due to the complete lack of material culture recovered. These features were shallow and with fills very similar to the topsoil and so a modern origin is most likely. After excavation the features were interpreted as the result of continued agricultural use of the area.
36. Feature (026) (Figure 9a) would appear to be modern structural remains judging from the similarity of its fill to the topsoil and that its straight sided profile may have been machine dug. The only other structural remains located on site were the three lines of postholes; (010), (024) and (025). However, these were uniformly shallow and lacking material culture. Although their origin remains uncertain there is nothing to suggest that they are other than modern and therefore nothing to suggest value in their further study.

Recommendations

37. The archaeological fieldwork carried out at Ramornie Quarry was carried out in respect to the proposed mineral extraction work and guided by a Desk Based Archaeological Assessment and Walkover Survey by SUAT. The work carried out by SUAT revealed the archaeological potential of the extraction area and flagged several potential

archaeological issues. The first of these was the drain recognised by SUAT to form the boundary between the parishes of Kettle and Collessie. This drain is potentially of medieval origin and therefore of archaeological significance. Its location is known being a large and active drain within the proposed extraction area. This feature is to be isolated from the extraction process and preserved in-situ and therefore no further archaeological work is recommended in this area.

38. During the fieldwork described above the feature identified by SUAT as a Second World War anti-tank ditch was located and recorded. In addition a profile of the ditch was obtained by the excavation of two trenches through the ditch and subsequent recording of the sections. It was clear from these works that the ditch has been heavily disturbed by trees along almost its entire length. In addition the complete lack of material culture observed during the excavation work suggests that there is little value in further investigation of this feature. After consultation with Fife Council Archaeology Unit it is agreed to be unlikely that this feature represents a part of the Second World War anti-tank defences. Its location, origin and profile are now recorded and so Rathmell Archaeology Ltd recommends that there is no value in further archaeological examination of this feature.
39. Several features were noted and recorded in the course of the evaluation works. Those shallow linear features recorded over almost the entire evaluation area may be classified as resulting from modern ploughing and therefore are of little or no archaeological value. The remaining features were concentrated in the central part of the site to the immediate north of the former mansion house. The results of the SUAT survey, particularly examination of the historic mapping, along with the excavation results suggests that the features in this area are the result of late 19th and 20th century modification of the ground around the estate house. Some of these modifications; shallow ditches, trees and farm tracks, may relate to the now removed Ramornie Designed Landscape, however, without material culture there is no way to positively identify the origin of features. The similarity of all fills to the topsoil or to re-deposited natural suggests that they are all of modern origin and so their archaeological significance is minimal. Rathmell Archaeology Ltd recommends that no further archaeological work be carried out to investigate these features.
40. The survey carried out by SUAT recognised the potential for previously unknown significant archaeology to be located within the proposed extraction area, given the existence of sites like Lawfield Ring ditch in the surrounding landscape. However, no features or material culture were found in the course of the evaluation works that would suggest significant archaeology within the extraction area. All features located were interpreted as having modern origins and the complete absence of material culture recovered would limit the value of any further work. Rathmell Archaeology Ltd recommends no further archaeological work within the proposed extraction area.

Conclusion

41. This Data Structure Report has been prepared for Angle Park Sand and Gravel Co. Ltd in respect to the archaeological evaluation in support of the proposed mineral extraction at Ramornie Quarry, Fife. Fife Council required a programme of archaeological works to be undertaken as a requirement of the extraction proposal. The archaeological works were designed to mitigate the impact of the proposed extraction on the archaeological resource of the area. Specifically to evaluate the archaeological potential of the ground and to record any military remains in the western most part of the extraction area.
42. The initial impression was that the evaluation area had been heavily developed as arable land. This was borne out by the quantity of shallow linear features and ploughmarks over almost the entire site. However, the central part of the site showed signs of having been redeveloped in recent times, as shown by the presence of additional features and disturbance due to the placement of farm tracks, drainage and services. No anthropic material was recovered from anywhere on site and the lack of any significant archaeology suggests that there is no value in further archaeological work within the proposed extraction area.

Archaeological recording work was carried out on a ditch in the western most part of the site. This feature had been heavily disturbed by trees but it was still possible to record a profile in two places and the line of the ditch as far as possible within the proposed extraction area. No material culture was recovered relating to the placement or use of the ditch. However, the size and location of the ditch suggests that it was not a part of the Second World War anti-tank defences.

References

Documentary

Matthews, A	2009	<i>Ramornie Quarry, Fife, Archaeological Mitigation: Method Statement.</i> Rathmell Archaeology Ltd
Perry, D	2005	<i>Desk-Based Archaeological Assessment and Walkover Survey, Ramornie, Ladybank, Fife.</i> SUAT Ltd
Scot Gov	2008	SPP23 Planning and the Historic Environment.
SOEnv	1994	Planning Advice Note 42, Archaeology, Scottish Office Environmental Department.

Cartographic

1747-1755	Roy	Military Survey of Scotland
1775	Ainslie, John	Counties of Fife and Kinross with the Rivers Forth and Tay
1827	Thomson, John	Fife with Kinross Shire.
1828	Sharp, Greenwood & Fowler	Map of the counties of Fife and Kinross
1856	Ordnance Survey	1 st edition Ordnance Survey, Fifeshire
1859	Ordnance Survey	2 nd edition Ordnance Survey, Fifeshire
1919	Ordnance Survey	3 rd edition Ordnance Survey, Fifeshire

Appendix 1: Trench Details

Within this appendix a standardised set of data pertaining to the evaluation trenches is presented.

All measurement distances quoted along the trench measure based on the quoted orientation of the trench. See Figure 1 for trench locations.

Trench	Orientation	Size	Topsoil Depth	Subsoil Character	Modern/ Agricultural Features	Significant Features	Artefacts
1	South-south-east to North-north-west	2m by 22m 44m ²	200 to 300mm	Pale orange and grey mottled sand (004).	Agricultural linear present at +3.4m orientated S-N.	None	None
2	West-north-west to East-south-east	2m by 79m 158m ²	200 to 300mm	Pale orange and grey mottled sand (004) present until +38m before changing to orange sandy gravel (012). This is present until +56m before changing back to (004).	Line of three postholes (024) present at +6m until +11m aligned roughly W-E. Line of five postholes (025) present at +24m until +30.4m aligned roughly W-E. Linear (026) present at +30m until +36.2m orientated SW-NE before changing direction to be orientated NW-SE until +38m.	None	None
3	West-south-west to East-north-east	2m by 42m 84m ²	300mm	Pale orange and grey mottled sand (004) present until +36m before changing to orange sandy gravel (012).	Agricultural linear present at +29m roughly orientated WSW-ENE.	None	None
4	North to South	2m by 42m 84m ²	300mm	Orange sandy gravel (012).	None	None	None
5	West-south-west to East-	2m by 21m	200 to 400mm	Orange sandy gravel (012).	None	None	None

Trench	Orientation	Size	Topsoil Depth	Subsoil Character	Modern/ Agricultural Features	Significant Features	Artefacts
	north-east	42m ²					
6	North to South	2m by 69m 138m ²	300 to 600mm	Orange sandy gravel (012) present until +10m before changing to dark red brown compact sand (003). This is present until +19m before changing back to (012).	Agricultural linear present at +35m orientated NW-SE.	None	None
7	South to North	2m by 87m 174m ²	400 to 600mm	Orange sandy gravel (012) present until +8m before changing to dark red brown compact sand (003). This is present until +23.6m before changing back to (012) which is then present until +42m before changing to pale orange and grey mottled sand (004).	None	None	None
8	North to South	2m by 100m 200m ²	300 to 500mm	Orange sandy gravel (012) present until +6m before changing to pale orange and grey mottled sand (004). This is present until +20m before changing to dark red brown compact sand (003). This then changes to (012) again at +40.2m before changing back to (004) at +82m.	Water main present at +0.6m orientated NW-SE.	None	None
9	South to North	2m by 50m 100m ²	300 to 400mm	Pale orange and grey mottled sand (004) present until +36m before changing to dark red brown compact sand (003).	Water main present at +30m orientated SE-NW.	None	None
10	East-north-east to West-south-west	2m by 101m 202m ²	300 to 600mm	Pale orange and grey mottled sand (004) present until +86.8m before changing to dark red brown compact sand (003).	Modern disturbance present at +56.8m until +55.2m.	None	None
11	Northeast to	2m by	250 to	Pale orange and grey mottled sand	Modern drain present at +8.4m orientated SE-NW.	None	None

Trench	Orientation	Size	Topsoil Depth	Subsoil Character	Modern/ Agricultural Features	Significant Features	Artefacts
	Southwest	101.3m 202.6m ²	300mm	(004).	Ploughmarks present at +21.4m orientated E-W.		
12	East to West	2m by 100.7m 201.4m ²	300 to 550mm	Dark red brown compact sand (003) present until +76m before changing to pale orange and grey mottled sand (004).	Modern drain present at +7m orientated N-S. Possible trackway (019) present at +7.6m until +25.6m. Water main present at +18m orientated SE-NW. Linear (027) present at +68m orientated NE-SW.	None	None
13	East-north-east to West-south-west	2m by 100m 200m ²	300 to 500mm	Pale orange and grey mottled sand (004).	Water main present at +32m orientated SE-NW. Modern drain present at +53.8m orientated SE-NW.	None	None
14	Southwest to Northeast	2m by 101m 202m ²	250 to 400mm	Dark red brown compact sand (003) present until +5.4m before changing to orange sandy gravel (012). This is present until +20m before changing back to (003). This then changes to pale orange and grey mottled sand (004) after +55m.	Modern drain present at +29m orientated NW-SE. Water main present at +55m orientated NW-SE. Possible test pit present at +86m.	None	None
15	West to East	2m by 101m 202m ²	300 to 500mm	The subsoil changes between orange sandy gravel (012) and dark red brown compact sand (003) throughout the trench.	Modern linears present at +47.4m orientated SW-NE and at +74m orientated NW-SE. Ploughmarks present at +91.6m orientated SW-NE.	None	None
16	East-south-east to West-north-	2m by 100m	300 to 400mm	The subsoil changes between orange sandy gravel (012) and dark red brown compact sand (003) throughout the	Ploughmarks present at +3.4m orientated NNE-SSW and at +66m	None	None

Trench	Orientation	Size	Topsoil Depth	Subsoil Character	Modern/ Agricultural Features	Significant Features	Artefacts
	west	200m ²		trench.	orientated SE-NW. Modern linear present at +27m orientated SE-NW.		
17	West-north-west to East-south-east	2m by 101m 202m ²	300 to 500mm	The subsoil changes between orange sandy gravel (012) and dark red brown compact sand (003) throughout the trench.	Ploughmarks present at +89.6m orientated SSW-NNE.	None	None
18	West to East	2m by 51m 102m ²	300 to 400mm	Orange sandy gravel (012).	None	None	None
19	East to West	2m by 50m 100m ²	300mm	Orange sandy gravel (012).	Modern linear present at +19m orientated N-S. Ploughmarks present at +28m and +46m orientated NE-SW.	None	None
20	South to North	2m by 50m 100m ²	400 to 500mm	Dark red brown compact sand (003) present until +27.4m before changing to orange sandy gravel (012).	Ploughmarks present at +12.4m orientated SW-NE.	None	None
21	North to South	2m by 50m 100m ²	300 to 400mm	The subsoil changes between orange sandy gravel (012) and dark red brown compact sand (003) throughout the trench.	None	None	None
22	South-North	2m by 50m 100m ²	400mm	The subsoil changes between orange sandy gravel (012) and dark red brown compact sand (003) throughout the trench.	None	None	None

Trench	Orientation	Size	Topsoil Depth	Subsoil Character	Modern/ Agricultural Features	Significant Features	Artefacts
23	Northeast to Southwest	2m by 101m 202m ²	300 to 500mm	Pale orange and grey mottled sand (004) present until +51m before changing to dark red brown compact sand (003). This is present until +90m before changing back to (004).	Modern drain present at 0m and at +22m orientated NE-SW and N-S respectively. Linear (011) present at +72m orientated ESE-WNW.	None	None
24	Southwest to Northeast	2m by 102m 204m ²	300 to 500mm	Dark red brown compact sand (003) present until +13.8m before changing to pale orange and grey mottled sand (004).	Water main present at +4.6m orientated NW-SE. Ploughmarks present from +20.8m until +36.4m orientated NW-SE. Agricultural linear present at 77m orientated W-E.	None	None
25	East to West	2m by 50.1m 100.2m ²	260 to 400mm	Pale orange and grey mottled sand (004).	Ploughmarks present at +19.6m and +42.2m orientated SSE-NNW. Linear (005) present at +22m until the end of the trench orientated ENE-WSW.	None	None
26	West to East	2m by 101.5m 203m ²	300 to 400mm	Pale orange and grey mottled sand (004) present until +24m before changing to dark red brown compact sand (003). This is present until +50m before changing back to (004).	White plastic pipe and red tile drain present at +1.2m and +3.8m respectively with common orientation (N-S). Possible trackway (006) present at +15m until +28.8m. Linears (007) and (008) present at +54.2m and +58.6m respectively with common orientation (NNW-SSE). Ploughmarks present at +64m until +74m	None	None

Trench	Orientation	Size	Topsoil Depth	Subsoil Character	Modern/ Agricultural Features	Significant Features	Artefacts
					orientated N-S.		
27	East-south-east to West-north-west	2m by 101m 202m ²	300 to 400mm	Pale orange and grey mottled sand (004).	Agricultural linears present at +17.6m, +20m and +22m with common orientation (N-S). Linear (009) present at +31m orientated N-S. Ploughmarks present at +58m and +72m with common orientation (E-W).	None	None
28	West-north-west to East-south-east	2m by 102m 204m ²	300 to 500mm	Pale orange and grey mottled sand (004).	Ploughmarks present throughout trench with varied orientations. Line of postholes (010) present at +43.6m aligned WSW-ENE. Possible test pit present at +61m.	None	None
29	East-south-east to West-north-west	2m by 100m 200m ²	300 to 400mm	Dark red brown compact sand (003) present until +52m before changing to pale orange and grey mottled sand (004).	Ploughmarks present throughout the trench with varied orientations.	None	None
30	West-north-west to East-south-east	2m by 101m 202m ²	300 to 400mm	Pale orange and grey mottled sand (004) until +85m before changing to dark red brown compact sand (003).	Linear (011) present at 0m until +75m orientated WNW-ESE.	None	None
31	East-south-east to West-north-west	2m by 100m 200m ²	300 to 400mm	Pale orange and grey mottled sand (004).	Agricultural linears present at +36.6m and +62m orientated S-N.	None	None

Trench	Orientation	Size	Topsoil Depth	Subsoil Character	Modern/ Agricultural Features	Significant Features	Artefacts
32	East to West	2m by 50m 100m ²	300 to 400mm	Pale orange and grey mottled sand (004).	Agricultural linear present at +28m orientated NE-SW. Ploughmarks present after +38m orientated E-W.	None	None
33	East to West	2m by 100m 200m ²	300 to 500mm	Pale orange and grey mottled sand (004) with a patch of orange sandy gravel (012) present between +60m and +66m.	Ploughmarks present throughout the trench orientated E-W. Agricultural linear present at +26m orientated NE-SW. Modern pit filled with glass and ceramic bottles present at +86.2m. Red tile drain present at +96m orientated N-S.	None	None
34	West to East	2m by 100m 200m ²	300 to 600mm	Pale orange and grey mottled sand (004).	Ploughmarks present at +7m until +16m and again at +80m orientated SW-NE. Linear (013) present at +43m until +47.4m. Linears (014) and (015) present at +49m and +50m respectively with common orientation (N-S).	None	None
35	West to East	2m by 50m 100m ²	300 to 400mm	Orange sandy gravel (012).	Ploughmarks present at +20m orientated SW-NE. Linear (016) present at +39m orientated N-S.	None	None
36	North-north-east to South-south-west	2m by 100.7m	280 to 400mm	Pale orange and grey mottled sand (004).	Ploughmarks present throughout trench mainly orientated NW-SE.	None	None

Trench	Orientation	Size	Topsoil Depth	Subsoil Character	Modern/ Agricultural Features	Significant Features	Artefacts
		201.4m ²					
37	South-south-west to North-north-east	2m by 100.3m 200.6m ²	280 to 500mm	Pale orange and grey mottled sand (004) until +90.2m before changing to dark red brown compact sand (003).	Ploughmarks present throughout trench mainly orientated E-W.	None	None
38	North-north-east to South-south-west	2m by 100m 200m ²	300 to 800mm	Pale orange and grey mottled sand (004) with a patch of dark red brown gravel and sand (002) present between +78m until +86m.	Ploughmarks present at +22m, +45m, +55m and +73m with various orientations. Agricultural linears present at +30m, +32.4m and +72m orientated NW-SE and at +54.8m orientated NE-SW.	None	None
39	South to North	2m by 50m 100m ²	400 to 600mm	Dark red brown compact sand (003) present until +6.8m before changing to pale orange and grey mottled sand (004).	Agricultural linear present at +11m orientated E-W.	None	None
40	West to East	2m by 50m 100m ²	400 to 800mm	Pale orange and grey mottled sand (004).	None	None	None
41	East to West	2m by 51m 102m ²	400 to 500mm	Pale orange and grey mottled sand (004).	Ploughmarks present at +18m orientated E-W.	None	None
42	West-south-west to East-	2m by 85m	350 to 500mm	Dark red brown compact sand (003).	None	None	None

Trench	Orientation	Size	Topsoil Depth	Subsoil Character	Modern/ Agricultural Features	Significant Features	Artefacts
	north-east	170m ²					
43	Southeast to Northwest	2m by 50m 100m ²	400 to 500mm	Dark red brown compact sand (003).	Ploughmarks present at +4.6m until +21m orientated E-W.	None	None
44	North-north-west to South-south-east	2m by 50m 100m ²	300 to 500mm	Dark red brown compact sand (003).	Agricultural linear present at +10m orientated NW-SE.	None	None
45	East to West	2m by 103.2m 206.4m ²	300 to 400mm	Dark red brown compact sand (003).	Linear (017) present at +60m orientated N-S.	None	None
46	West to East	2m by 50m 100m ²	400 to 500mm	Dark red brown compact sand (003).	Ploughmarks present at +19m and +22.6m orientated SW-NE and NNW-SSE respectively.	None	None
47	West-south-west to East-north-east	2m by 90.6m 181.2m ²	350 to 400mm	Dark red brown compact sand (003).	Agricultural linears present at +8m and +49m orientated NW-SE. Linear (017) present at +42.8m orientated NNW-SSE.	None	None
48	West-south-west to East-north-east	2m by 99.7m 199.4m ²	360 to 500mm	Dark red brown compact sand (003).	Agricultural linear present at +45m orientated NW-SE. Linear (018) present at +59m orientated NNW-SSE. Ploughmark present at +69.6m	None	None

Trench	Orientation	Size	Topsoil Depth	Subsoil Character	Modern/ Agricultural Features	Significant Features	Artefacts
					orientated NW-SE.		
49	East-north-east to West-south-west	2m by 102m 204m ²	350 to 500mm	Dark red brown compact sand (003).	Linear (018) present at +42.8m orientated NNW-SSE. Agricultural linear present at +82.8m orientated SE-NW. Modern dump of material including animal bone and red tile drain fragments present at +95m until +101m.	None	None
50	Northwest to Southeast	2m by 98.5m 197m ²	500 to 600mm	Dark red brown compact sand (003).	Agricultural linears present at +17m, +23.4m, +42.8m and +77m all with common orientation (NNW-SSE). Linear (018) present at +64m orientated NE-SW.	None	None
51	East-south-east to West-north-west	2m by 82.6m 165.2m ²	300 to 500mm	Dark red brown compact sand (003).	Linear (017) present at +36.6m orientated SSE-NNW.	None	None
52	Northeast to Southwest	2m by 58.8m 117.6m ²	400mm	Pale orange and grey mottled sand (004).	Linear (017) present at +51m orientated SE-NW.	None	None
53	Southwest to Northeast	2m by 50m 100m ²	600 to 700mm	Dark red brown compact sand (003).	None	None	None

Trench	Orientation	Size	Topsoil Depth	Subsoil Character	Modern/ Agricultural Features	Significant Features	Artefacts
54	East-north-east to West-south-west	2m by 50m 100m ²	500 to 800mm	Dark red brown gravel and sand (002) present until +12m before changing to dark red brown compact sand (003).	None	None	None
55	East to West	2m by 52m 104m ²	500mm	Orange sandy gravel (012) present throughout trench with patches of pale orange and grey mottled sand (004) present at +22m until +28m and again at +47m until the end.	Ploughmarks present at +25.6m orientated E-W.	None	None
56	East-south-east to West-north-west	2m by 51m 102m ²	400mm	The subsoil changes between orange sandy gravel (012) and dark red brown compact sand (003) throughout the trench.	Agricultural linear present at +32m orientated SSW-NNE.	None	None
57	Northwest to Southeast	2m by 7.8m 15.6m ²	170 to 400mm	Pale orange and grey mottled sand (004) present until +2m before changing to orange sandy gravel (012).	None	Anti-tank ditch [020] present at +3.05m until +6m orientated NE-SW.	None
58	Northwest to Southeast	2m by 6.6m 13.2m ²	150 to 280mm	Pale orange and grey mottled sand (004).	None	Anti-tank ditch [020] present at +1.85m until +3.85m orientated NE-SW.	None

Appendix 2: Registers

Within this appendix are all registers pertaining to works on-site regardless of the process by which that information was gathered (e.g. evaluation or strip, map & sample).

Context Register

Context No.	Area/Trench	Type	Description	Interpretation
001	All	Topsoil	Very humic dark brown to black sandy silt.	Topsoil
002	-	Subsoil	Dark red brown gravel and sand. Some plant and plough disturbance.	Subsoil
003	-	Subsoil	Dark red brown compact sand.	Subsoil
004	-	Subsoil	Pale orange and grey mottled sand. Compact with occasional ploughmarks.	Subsoil
005	25, 27	Feature	Linear feature orientated ENE-WSW. Fairly steeply sloping sides with a fairly flat base. Measures 0.9m wide x 230mm deep x unknown length as runs outwith trench. Filled by mid-dark brown very silty sand. A lot of root disturbance throughout.	Appears to be a modern feature. Possibly agricultural or possibly a former hedgerow.
006	26	Feature	Large area of disturbance. Mixed, mainly pale red brown sand and gravel inclusions with patches of dark grey brown silty clay. Approx. 11m wide x 500mm deep. Similar to (019)	Appears to be a modern feature. Possibly a former large trackway giving access to buildings to the south.
007	26	Feature	Linear feature orientated NNW-SSE. U-shaped section. Slightly steeper on E side, rounded flattish base. Measures 1m wide x 330mm deep x unknown length as runs outwith trench. Filled by dark grey brown clayey silt with patches of sand and pale gravel with some slate inclusions.	Appears to be a modern feature. Possibly a drainage ditch.
008	26	Feature	Linear feature orientated NNW-SSE. Steeply sloping sides with a flattish base. Measures 0.52m wide x 280mm deep x unknown length as runs outwith trench. Filled by very dark brown compact clayey silt.	Appears to be a modern feature. Possibly agricultural.
009	27	Feature	Linear feature orientated roughly N-S. Steeply sloping sides with rounded flattish base. Measures 0.42m wide x 210mm x unknown length as runs outwith trench. Filled by topsoil.	Appears to be a modern feature. Possibly agricultural.

Context No.	Area/ Trench	Type	Description	Interpretation
010	28	Feature	Three shallow circular features in a line orientated roughly E-W. Gradually sloping sides with rounded base. Measure 0.3m in diameter and 80-130mm deep. Set 40-60cm apart. Filled by topsoil.	A line of three possible postholes. No finds. Appear to be likely modern.
011	30	Feature	Linear feature orientated WNW-ESE. Gradual-steeply sloping sides with rounded irregular base. Measures 0.46-0.88m wide x 160-200mm deep x unknown length as runs outwith trench. Compact topsoil-like fill. Some root inclusions.	Appears to be a modern feature. Possibly a former hedgerow.
012	-	Subsoil	Orange sandy gravel.	Subsoil
013	34	Feature	Linear feature forming a semi-circle. Irregular form and base. Measures 0.94m wide x 350mm deep x unknown length as runs outwith trench. Topsoil-like fill.	Appears to be modern. Possibly agricultural or may be base of plants.
014	34	Feature	Linear feature orientated roughly N-S. Shallow with gradually sloping sides and a rounded base. Measures 0.31m wide x 90mm deep x unknown length as runs outwith trench. Topsoil fill.	Appears to be a modern feature. Possibly a ploughmark.
015	34	Feature	Linear feature orientated roughly N-S. Shallow with gradually sloping sides and irregular base. Measures 0.44m wide x 90mm deep x unknown length as runs outwith trench. Topsoil fill.	Appears to be a modern feature. Possibly a ploughmark.
016	35	Feature	Linear feature orientated NNW-SSE. Shallow with gently sloping sides and a rounded flattish base. Measures 1m wide x 140mm deep x unknown length as runs outwith trench. Topsoil-like fill.	Appears to be a modern feature. Possibly agricultural.
017	45, 47, 51, 52	Feature	Linear feature orientated roughly N-S. U-shaped section with steeply sloping sides and a rounded base. Measures 0.4m wide x 200mm deep x unknown length as runs outwith trench. Topsoil fill with many root inclusions.	Appears to be a modern feature. Possibly agricultural
018	48, 49, 50	Feature	Linear feature orientated NW-SE. Irregular V-shaped section with gradually sloping sides and a narrow slightly rounded base. Measures 0.9m wide x 400mm deep x unknown length as runs outwith trench. Dark topsoil-like fill.	Appears to be a modern feature. Possibly agricultural
019	12	Feature	Large area of disturbance. Mid-dark brown silty sand with	Appears to be a modern feature. Possibly a

Context No.	Area/ Trench	Type	Description	Interpretation
			frequent stones/slate. Measures approx. 16.8m wide x 700mm deep. Similar to (006). Has been cut through by water main towards its western end.	former large trackway giving access to buildings to the south.
020	57, 58	Cut	Large linear cut orientated SW-NE. Gradually sloping sides with rounded flat base. Measures approx. 2.85m wide x 970mm deep x unknown length as runs outwith trench. Filled by (021), (022) and (023).	Linear cut for an anti-tank ditch dug during World War Two which runs through the far west field of the evaluation area.
021	57, 58	Fill	Topsoil and upper fill of linear [020]. Compact dark brown clayey silt with frequent roots and occasional small stones.	Upper fill of anti-tank ditch [020]. Not possible to differentiate between the topsoil and the upper fill of the ditch. Large number of roots within the fill points to it as being the location of a tree in more recent times which has mixed the topsoil.
022	57, 58	Fill	Lower fill of linear [020]. Compact mid brown clayey, slightly sandy, silt with some small roots and some very small stones.	Lower fill of anti-tank ditch [020] on its NW side. Likely to have been a silting up of the base of the ditch when it was originally open.
023	57	Fill	Basal fill of linear [020]. Pale-mid orange/brown silty sand with some very small stones.	Basal fill of anti-tank ditch [020]. Likely to have been a silting up of the base of the ditch when it was originally open.
024	2	Feature	Line of three shallow postholes. Gradually sloping sides with a rounded flattish base. Measure 0.25m in diameter x 70-100mm deep. Set 1.4-2.8m apart. Grey silty fill.	Line of three shallow postholes. Appear to be modern.
025	2	Feature	Line of five postholes. Gradually-steeply sloping sides with a rounded base. Measure approx. 0.25m in diameter x 90-220mm deep. Set 1-1.4m apart. Filled by grey silty sand.	Line of five postholes. Appear to be modern.
026	2	Feature	Linear feature forming an 'L' shape. Near vertical sides with a slightly rounded square base. Measures 0.92m wide x 520mm deep. Filled by mixed sandy topsoil and subsoil.	Appears to be a modern feature.
027	12	Feature	Linear feature orientated NE-SW. Measures 1.4m wide. Filled by mixed mid orange clay and dark brown silt. Unable to be excavated due to heavy waterlogging.	Appears to be a modern feature.

Photographic Register

Image No.	Digital	Description	From	Date
1	1	Pre ex of east end of area	W	11/11/09
2	2	Pre ex of east end of area	S	11/11/09
3	3	Pre ex of east end of area	SW	11/11/09
4	4	Pre ex of east end of area (with bulls)	SE	11/11/09
5	5	Pre ex of east end of area	SE	11/11/09
6	6	Trench 54	W	11/11/09
7	7	Trench 54	W	11/11/09
8	8	Trench 53	S	11/11/09
9	9	Trench 53	S	11/11/09
10	10	Pre ex of centre of area	E	11/11/09
11	11	Pre ex of centre of area	SE	11/11/09
12	12	Pre ex of centre of area	S	11/11/09
13	13	Working shot	W	11/11/09
14	14	Pre ex of centre of area	S	11/11/09
15	15	Pre ex of centre of area	NW	11/11/09
16	16	Trench 38	SW	11/11/09
17	17	Trench 38	SW	11/11/09
18	18	Trench 40	W	11/11/09
19	19	Trench 40	W	11/11/09
20	20	Trench 39	NW	11/11/09
21	21	Trench 37	SSW	11/11/09

Image No.	Digital	Description	From	Date
22	22	General pre ex shot of centre field	ESE	11/11/09
23	23	Trench 36	NNE	12/11/09
24	24	Trench 25	ENE	12/11/09
25	25	Trench 26	ENE	12/11/09
26	26	Trench 27	W	12/11/09
27	27	Trench 27	W	12/11/09
28	28	Trench 28	E	12/11/09
29	29	Trench 28	E	12/11/09
30	30	Trench 29	W	12/11/09
31	31	Trench 29	W	12/11/09
32	32	Trench 30	NE	12/11/09
33	33	Trench 30	NE	12/11/09
34	34	Shot of ditch (005), Trench 25	WSW	12/11/09
35	35	ESE facing section of (005), Trench 25	ESE	12/11/09
36	36	Shot of red tile drain, Trench 26	E	12/11/09
37	37	Shot of red tile drain, Trench 26	W	12/11/09
38	38	Working shot	NE	12/11/09
39	39	Working shot	NE	12/11/09
40	40	Trench 32	SW	12/11/09
41	41	Trench 32	SW	12/11/09
42	42	Shot of plastic pipe, Trench 26	E	12/11/09
43	43	Shot of plastic pipe, Trench 26	N	12/11/09
44	44	Trench 33	WSW	12/11/09

Image No.	Digital	Description	From	Date
45	45	Trench 33	WSW	12/11/09
46	46	SSE facing section of ditch (008)	SSE	13/11/09
47	47	SSE facing section of ditch (007)	SSE	13/11/09
48	48	General shot of ditch (007)	SSE	13/11/09
49	49	Trench 34	E	13/11/09
50	50	Trench 34	E	13/11/09
51	51	Trench 35	E	13/11/09
52	52	Trench 35	E	13/11/09
53	53	Trench 55	W	13/11/09
54	54	Trench 55	W	13/11/09
55	55	General site shot – middle field	N	13/11/09
56	56	General site shot – middle field	N	13/11/09
57	57	Working shot	E	13/11/09
58	58	Working shot	E	13/11/09
59	59	Trench 24	SW	13/11/09
60	60	Trench 24	SW	13/11/09
61	61	Trench 23	SW	13/11/09
62	62	Trench 23	E	13/11/09
63	63	Melville Gate (watching brief) site visit	-	13/11/09
64	64	Melville Gate (watching brief) site visit	-	13/11/09
65	65	Melville Gate (watching brief) site visit	-	13/11/09
66	66	Melville Gate (watching brief) site visit	-	13/11/09
67	67	Melville Gate (watching brief) site visit	-	13/11/09

Image No.	Digital	Description	From	Date
68	68	Trench 41	E	13/11/09
69	69	Trench 41	E	13/11/09
70	70	Trench 33	E	13/11/09
71	71	Trench 33	E	13/11/09
72	72	Trench 30	E	13/11/09
73	73	Trench 30	E	13/11/09
74	74	General site shot	E	13/11/09
75	75	General site shot	E	13/11/09
76	76	General site shot	S	13/11/09
77	77	Trench 13	W	16/11/09
78	78	Trench 13	W	16/11/09
79	79	Trench 14	W	16/11/09
80	80	Trench 14	W	16/11/09
81	81	Trench 15	W	16/11/09
82	82	Trench 15	W	16/11/09
83	83	Trench 12	WSW	16/11/09
84	84	Trench 12	WSW	16/11/09
85	85	Trench 11	WSW	16/11/09
86	86	Trench 11	WSW	16/11/09
87	87	Trench 16	ENE	16/11/09
88	88	Trench 17	ENE	16/11/09
89	89	Trench 56	ENE	16/11/09
90	90	Trench 18	ENE	16/11/09

Image No.	Digital	Description	From	Date
91	91	Trench 19	ENE	16/11/09
92	92	Trench 22	NW	16/11/09
93	93	Trench 21	NW	16/11/09
94	94	Pre ex shots of far west area	SSW	17/11/09
95	95	Pre ex shots of far west area	SW	17/11/09
96	96	Pre ex shots of far west area	SW	17/11/09
97	97	Pre ex shots of far west area	NW	17/11/09
98	98	Dragons teeth	SE	17/11/09
99	99	Dragons teeth	SE	17/11/09
100	100	Dragons teeth	SSE	17/11/09
101	101	Dragons teeth	SSE	17/11/09
102	102	Dragons teeth	SW	17/11/09
103	103	Dragons teeth	WSW	17/11/09
104	104	Dragons teeth	SSE	17/11/09
105	105	Pre ex shots of far west field	NE	17/11/09
106	106	Pre ex shots of far west field	NNE	17/11/09
107	107	Pre ex shots of far west field	NE	17/11/09
108	108	Pre ex shots of far west field	ENE	17/11/09
109	109	Pre ex shots of far west field	SE	17/11/09
110	110	Pre ex shots of far west field	NE	17/11/09
111	111	Trench 6	SSE	17/11/09
112	112	Trench 7	SSE	17/11/09
113	113	Trench 8	SSE	17/11/09

Image No.	Digital	Description	From	Date
114	114	Trench 20	NNW	17/11/09
115	115	Trench 9	SSE	17/11/09
116	116	Trench 50	WSW	17/11/09
117	117	Trench 49	SW	17/11/09
118	118	Trench 50	ENE	17/11/09
119	119	Trench 48	WSW	17/11/09
120	120	Trench 44	NNW	17/11/09
121	121	Trench 46	WSW	17/11/09
122	122	Trench 45	W	18/11/09
123	123	Trench 45	W	18/11/09
124	124	Trench 42	W	18/11/09
125	125	Trench 42	W	18/11/09
126	126	Trench 43	W	18/11/09
127	127	Trench 43	W	18/11/09
128	128	Trench 47	E	18/11/09
129	129	Trench 47	E	18/11/09
130	130	East end of area	SE	18/11/09
131	131	East end of area	SE	18/11/09
132	132	East end of area	N	18/11/09
133	133	East end of area	N	18/11/09
134	134	Working shot	-	18/11/09
135	135	Working shot	-	18/11/09
136	136	Working shot	-	18/11/09

Image No.	Digital	Description	From	Date
137	137	S facing section of linear (017), Trench 45	S	18/11/09
138	138	Trench 51	W	18/11/09
139	139	Trench 51	W	18/11/09
140	140	Trench 52	W	18/11/09
141	141	Trench 52	W	18/11/09
142	142	SE facing section of linear (018), Trench 48	SE	18/11/09
143	143	Shot of (009)	S	18/11/09
144	144	Shot of (009)	S	18/11/09
145	145	Shot of (010)	S	18/11/09
146	146	Shot of (010)	S	18/11/09
147	147	Shot of (011)	E	18/11/09
148	148	Shot of (011)	E	18/11/09
149	149	Shot of (011)	W	18/11/09
150	150	Shot of (011)	W	18/11/09
151	151	Glass pit	W	18/11/09
152	152	Glass pit	W	18/11/09
153	153	Glass pit	W	18/11/09
154	154	Glass pit	W	18/11/09
155	155	Water main, Trench 24	NE	18/11/09
156	156	Water main, Trench 24	NE	18/11/09
157	157	Shot of (013), (014) and (015)	S	18/11/09
158	158	Shot of (013), (014) and (015)	S	18/11/09
159	159	Shot of (013), (014) and (015)	E	18/11/09

Image No.	Digital	Description	From	Date
160	160	Shot of (013), (014) and (015)	E	18/11/09
161	161	Shot of (013), (014) and (015)	S	18/11/09
162	162	Shot of (013), (014) and (015)	S	18/11/09
163	163	Shot of (013), (014) and (015)	E	18/11/09
164	164	Shot of (013), (014) and (015)	E	18/11/09
165	165	Shot of (016)	S	18/11/09
166	166	Shot of (016)	S	18/11/09
167	167	Trench 57	NW	19/11/09
168	168	Trench 58	NW	19/11/09
169	169	SW facing section of anti-tank ditch [020], Trench 57	SW	19/11/09
170	170	SW facing section of anti-tank ditch [020], Trench 57	SW	19/11/09
171	171	SW facing section of anti-tank ditch [020], Trench 57	SW	19/11/09
172	172	SW facing section of anti-tank ditch [020], Trench 57	W	19/11/09
173	173	SW facing section of anti-tank ditch [020], Trench 57	W	19/11/09
174	174	SW facing section of anti-tank ditch [020], Trench 57	SW	19/11/09
175	175	SW facing section of anti-tank ditch [020], Trench 57	S	19/11/09
176	176	SW facing section of anti-tank ditch [020], Trench 57	S	19/11/09
177	177	Trench 1	S	19/11/09
178	178	Trench 1	S	19/11/09
179	179	Trench 2	W	19/11/09
180	180	Trench 2	W	19/11/09
181	181	Trench 3	SW	19/11/09
182	182	Trench 3	SW	19/11/09

Image No.	Digital	Description	From	Date
183	183	Working shot, west field	W	19/11/09
184	184	Working shot, west field	W	19/11/09
185	185	Waterlogged area, west field	W	19/11/09
186	186	Waterlogged area, west field	W	19/11/09
187	187	Trench 4	N	19/11/09
188	188	Trench 4	N	19/11/09
189	189	Trench 5	SW	19/11/09
190	190	Trench 5	SW	19/11/09
191	191	Working shot, west field	NE	19/11/09
192	192	Working shot, west field	NE	19/11/09
193	193	Ditch trenches	SW	19/11/09
194	194	Ditch trenches	SW	19/11/09
195	195	Working shot	W	19/11/09
196	196	Working shot	W	19/11/09
197	197	Working shot	W	19/11/09
198	198	Anti-tank ditch	N	19/11/09
199	199	Anti-tank ditch	N	19/11/09
200	200	Medieval boundary	E	19/11/09
201	201	Medieval boundary	E	19/11/09
202	202	Medieval boundary	E	19/11/09
203	203	Medieval boundary	E	19/11/09
204	204	Shot of (024)	SW	19/11/09
205	205	Shot of (024)	SW	19/11/09

Image No.	Digital	Description	From	Date
206	206	Shot of (024)	S	19/11/09
207	207	Shot of (025)	SW	19/11/09
208	208	Shot of (025)	SW	19/11/09
209	209	Shot of (025)	S	19/11/09
210	210	Shot of (025)	S	19/11/09
211	211	Shot of (026)	SW	19/11/09
212	212	Shot of (026)	SW	19/11/09
213	213	Shot of (026)	SW	19/11/09
214	214	SW facing section of anti-tank ditch [020], Trench 58	W	19/11/09
215	215	SW facing section of anti-tank ditch [020], Trench 58	WSW	19/11/09
216	216	SW facing section of anti-tank ditch [020], Trench 58	SW	19/11/09
217	217	SW facing section of anti-tank ditch [020], Trench 58	SW	19/11/09
218	218	SW facing section of anti-tank ditch [020], Trench 58	SW	19/11/09
219	219	SW facing section of anti-tank ditch [020], Trench 58	SW	19/11/09
220	220	SW facing section of anti-tank ditch [020], Trench 58	SW	19/11/09
221	221	SW facing section of anti-tank ditch [020], Trench 58	S	19/11/09
222	222	SW facing section of anti-tank ditch [020], Trench 58	SW	19/11/09
223	223	SW facing section of anti-tank ditch [020], Trench 58	SW	19/11/09
224	224	SW facing section of anti-tank ditch [020], Trench 58	SW	19/11/09
225	225	SW facing section of anti-tank ditch [020], Trench 58	SW	19/11/09
226	226	SW facing section of anti-tank ditch [020], Trench 58	SW	19/11/09
227	227	SW facing section of anti-tank ditch [020], Trench 58	SW	19/11/09
228	228	SW facing section of anti-tank ditch [020], Trench 58	SW	19/11/09

Image No.	Digital	Description	From	Date
229	229	SW facing section of anti-tank ditch [020], Trench 58	SW	19/11/09
230	230	General post ex site shots – middle field	SSW	20/11/09
231	231	General post ex site shots – middle field	W	20/11/09
232	232	General post ex site shots – middle field	WNW	20/11/09
233	233	General post ex site shots – middle field	E	20/11/09
234	234	General post ex site shots – middle field	E	20/11/09
235	235	Shot of backfilled trenches – east field	SE	20/11/09
236	236	Shot of backfilled trenches – east field	SE	20/11/09
237	237	General post ex site shots – east field	S	20/11/09
238	238	General post ex site shots – east field	SW	20/11/09
239	239	Shot of backfilled trenches – east field	NW	20/11/09
240	240	Shot of backfilled trenches – east field	W	20/11/09
241	241	WSW facing section through (006), Trench 26	WSW	20/11/09
242	242	WSW facing section through (006), Trench 26	WSW	20/11/09
243	243	WSW facing section through (019), Trench 12	WSW	20/11/09
244	244	WSW facing section through (019), Trench 12	WSW	20/11/09

Drawing Register

Drawing No.	Sheet No.	Area/ Trench	Drawing Type	Scale	Description	Drawer	Date
1	1	54	Plan	1:200	Trench 54	AM	11/11/09
2	1	53	Plan	1:200	Trench 53	AM	11/11/09
3	1	41	Plan	1:200	Trench 41	AM	11/11/09

Drawing No.	Sheet No.	Area/ Trench	Drawing Type	Scale	Description	Drawer	Date
4	1	39	Plan	1:200	Trench 39	AM	11/11/09
5	1	38	Plan	1:200	Trench 38	AM	11/11/09
6	1	37	Plan	1:200	Trench 37	CW	12/11/09
7	1	36	Plan	1:200	Trench 36	CW	12/11/09
8	1	25	Plan	1:200	Trench 25	CW	12/11/09
9	1	25	Section	1:10	ENE facing section of (005)	CW	12/11/09
10	1	26	Plan	1:200	Trench 26	CW	12/11/09
11	1	26	Section	1:10	SSE facing section of (007)	CW	12/11/09
12	1	26	Section	1:10	SSE facing section of (008)	CW	12/11/09
13	1	27	Plan	1:200	Trench 27	AM	16/11/09
14	1	27	Section	1:10	N facing section of (009)	AM	16/11/09
15	1	40	Plan	1:200	Trench 40	AM	11/11/09
16	1	28	Section	1:10	S facing section of (010)	AM	16/11/09
17	1	28	Section	1:10	S facing section of (010)	AM	16/11/09
18	1	28	Section	1:10	S facing section of (010)	AM	16/11/09
19	1	28	Plan	1:200	Trench 28	AM	16/11/09
20	1	29	Plan	1:200	Trench 29	AM	16/11/09
21	1	30	Plan	1:200	Trench 30	AM	16/11/09
22	1	30	Section	1:10	WSW facing section of (011), slot 1	AM	16/11/09
23	1	30	Section	1:10	WSW facing section of (011), slot 2	AM	16/11/09
24	1	31	Plan	1:200	Trench 31	AM	16/11/09
25	2	32	Plan	1:200	Trench 32	AM	17/11/09
26	2	33	Plan	1:200	Trench 33	AM	17/11/09
27	2	34	Plan	1:200	Trench 34	AM	17/11/09

Drawing No.	Sheet No.	Area/ Trench	Drawing Type	Scale	Description	Drawer	Date
28	2	34	Section	1:10	W facing section of (013)	AM	17/11/09
29	2	34	Section	1:10	S facing section of (014)	AM	17/11/09
30	2	34	Section	1:10	S facing section of (015)	AM	17/11/09
31	2	55	Plan	1:200	Trench 55	AM	17/11/09
32	2	35	Plan	1:200	Trench 35	AM	17/11/09
33	2	35	Section	1:10	S facing section of (016)	AM	17/11/09
34	2	24	Plan	1:200	Trench 24	AM	17/11/09
35	2	23	Plan	1:200	Trench 23	AM	17/11/09
36	2	10	Plan	1:200	Trench 10	AM	17/11/09
37	2	43	Plan	1:200	Trench 43	CW	18/11/09
38	2	44	Plan	1:200	Trench 44	CW	18/11/09
39	2	42	Plan	1:200	Trench 42	CW	18/11/09
40	2	45	Plan	1:200	Trench 45	CW	18/11/09
41	2	45	Section	1:10	S facing section of (017), Trench 45	CW	18/11/09
42	2	46	Plan	1:200	Trench 46	CW	18/11/09
43	2	47	Plan	1:200	Trench 47	CW	18/11/09
44	2	48	Plan	1:200	Trench 48	CW	18/11/09
45	2	48	Section	1:10	SE facing section of (018), Trench 48	CW	18/11/09
46	2	49	Plan	1:200	Trench 49	CW	18/11/09
47	3	50	Plan	1:200	Trench 50	CW	18/11/09
48	3	51	Plan	1:200	Trench 51	CW	18/11/09
49	3	52	Plan	1:200	Trench 52	CW	18/11/09
50	3	11	Plan	1:200	Trench 11	CW	18/11/09
51	3	12	Plan	1:200	Trench 12	CW	18/11/09

Drawing No.	Sheet No.	Area/ Trench	Drawing Type	Scale	Description	Drawer	Date
52	3	13	Plan	1:200	Trench 13	CW	18/11/09
53	3	14	Plan	1:200	Trench 14	CW	18/11/09
54	3	57	Section	1:10	SW facing section of linear [020], Trench 57	CW	19/11/09
55	4	1	Plan	1:200	Trench 1	AM	19/11/09
56	4	2	Plan	1:200	Trench 2	AM	19/11/09
57	4	2	Section	1:10	S facing section of (024), posthole 1	AM	19/11/09
58	4	2	Section	1:10	SSW facing section of (024), posthole 2	AM	19/11/09
59	4	2	Section	1:10	S facing section of (025), posthole 1	AM	19/11/09
60	4	2	Section	1:10	S facing section of (025), posthole 2	AM	19/11/09
61	4	2	Section	1:10	SW facing section of (026)	AM	19/11/09
62	4	3	Plan	1:200	Trench 3	AM	19/11/09
63	4	4	Plan	1:200	Trench 4	AM	19/11/09
64	4	5	Plan	1:200	Trench 5	AM	19/11/09
65	5	58	Section	1:10	SW facing section of linear [020], Trench 58	AM	19/11/09
66	5	58	Plan	1:200	Trench 58	CW	19/11/09
67	5	57	Plan	1:200	Trench 57	CW	19/11/09
68	6	15	Plan	1:200	Trench 15	AM	20/11/09
69	6	16	Plan	1:200	Trench 16	AM	20/11/09
70	6	17	Plan	1:200	Trench 17	AM	20/11/09
71	6	56	Plan	1:200	Trench 56	AM	20/11/09
72	6	18	Plan	1:200	Trench 18	AM	20/11/09
73	6	19	Plan	1:200	Trench 19	AM	20/11/09
74	6	22	Plan	1:200	Trench 22	AM	20/11/09
75	6	21	Plan	1:200	Trench 21	AM	20/11/09

Drawing No.	Sheet No.	Area/ Trench	Drawing Type	Scale	Description	Drawer	Date
76	6	20	Plan	1:200	Trench 20	AM	20/11/09
77	6	9	Plan	1:200	Trench 9	AM	20/11/09
78	6	8	Plan	1:200	Trench 8	AM	20/11/09
79	6	7	Plan	1:200	Trench 7	AM	20/11/09
80	6	6	Plan	1:200	Trench 6	AM	20/11/09

Appendix 3: Discovery & Excavation in Scotland

LOCAL AUTHORITY:	Fife
PROJECT TITLE/SITE NAME:	Ramornie Quarry, Fife
PROJECT CODE:	09051
PARISH:	Collessie
NAME OF CONTRIBUTOR:	Alan Matthews
NAME OF ORGANISATION:	Rathmell Archaeology Limited
TYPE(S) OF PROJECT:	Evaluation
NMRS NO(S):	None
SITE/MONUMENT TYPE(S):	None
SIGNIFICANT FINDS:	None
NGR (2 letters, 6 figures)	NO 320 097
START DATE (this season)	11 th November 2009
END DATE (this season)	20 th November 2009
PREVIOUS WORK (incl. DES ref.)	None
MAIN (NARRATIVE) DESCRIPTION: (may include information from other fields)	<p>The archaeological work was designed evaluate the archaeological potential of the ground and to record any World War II military remains in the western most part of the extraction area. The evaluation area had been heavily developed as arable land. This was bore out by the quantity of shallow linear features and ploughmarks over almost the entire site. However, the central part of the site showed signs of having been redeveloped in recent times as shown by the presence of additional features and disturbance due to the placement of farm tracks, drainage and services. No anthropic material was recovered from anywhere on site and the lack of any significant archaeology suggests that there is no value in further archaeological work within the proposed extraction area.</p> <p>Archaeological recording work was carried out a ditch in the western most part of the site. This feature had been heavily disturbed by trees but it was still possible to record a profile in two places and the line of the ditch as far as possible within the proposed extraction area. No material culture was recovered relating to the placement or use of the ditch. However the size and location of the ditch suggests that is was not a part of the World War II anti-tank defences.</p>
PROPOSED FUTURE WORK:	None
CAPTION(S) FOR ILLUSTRS:	None
SPONSOR OR FUNDING BODY:	Angle Park Sand and Gravel Co. Ltd
ADDRESS OF MAIN CONTRIBUTOR:	Unit 8 Ashgrove Workshops, Kilwinning, Ayrshire KA13 6PU
E MAIL:	contact@rathmell-arch.co.uk
ARCHIVE LOCATION (intended/deposited)	Report to Fife Council Archaeology Unit and archive to National Monuments Record of Scotland.

Contact Details

43. Rathmell Archaeology can be contacted at our Registered Office or through the web:
- | | |
|---------------------------|--|
| Rathmell Archaeology Ltd | www.rathmell-arch.co.uk |
| Unit 8 Ashgrove Workshops | |
| Kilwinning | t.: 01294 542848 |
| Ayrshire | f.: 01294 542849 |
| KA13 6PU | e.: contact@rathmell-arch.co.uk |
44. The Fife Council Archaeology Unit can be contacted at their office or through the web:
- | | |
|-------------------|--|
| Archaeology Unit | www.fife.gov.uk |
| Fife Council | |
| Town House | t.: 08451 555555 |
| 2 Wemyssfield | f.: 01592 583638 |
| Kirkcaldy KY1 1XW | e.: douglas.speirs@fife.gov.uk |

End of Document