

Kinloch House, Collessie: Archaeological Evaluation

Data Structure Report

by Thomas Rees & Douglas Gordon

issued 29th April 2011



Rathmell
Archaeology Ltd

Quality Assurance

This report covers works which have been undertaken in keeping with the issued brief as modified by the agreed programme of works. The report has been prepared in keeping with the guidance of Rathmell Archaeology Limited on the preparation of reports. All works reported on within this document have been undertaken in keeping with the Institute for Archaeologists' Standards and Policy Statements and Code of Conduct.

Signed

Date

In keeping with the procedure of Rathmell Archaeology Limited this document and its findings have been reviewed and agreed by an appropriate colleague:

Checked

Date

Copyright Rathmell Archaeology Limited. All rights reserved.

No part of this report may be copied or reproduced by any means without prior written permission from Rathmell Archaeology Limited. If you have received this report in error, please destroy all copies in your possession or control and notify Rathmell Archaeology Limited.

This report has been prepared for the exclusive use of the commissioning party and unless otherwise agreed in writing by Rathmell Archaeology Limited, no other party may use, make use of or rely on the contents of the report. No liability is accepted by Rathmell Archaeology Limited for any use of this report, other than the purposes for which it was originally prepared and provided.

Opinions and information provided in the report are on the basis of Rathmell Archaeology Limited using due skill, care and diligence in preparation of the same and no explicit warranty is provided as to their accuracy. It should be noted and it is expressly stated that no independent verification of any of the documents or information supplied to Rathmell Archaeology Limited has been made.

Contents

Introduction	4
Planning Context	4
Fife Structure Plan 2006 - 2026	5
Fife Minerals Subject Local Plan 2004	5
Finalised St Andrews & East Fife Local Plan 2009	6
Archaeological and Historical Background	7
Neolithic Enclosure, Site 1	9
Kinloch Souterrain, Site 2	9
Other Cropmarks, Sites 3 to 5	9
Historic Land Use	13
Project Works	14
Findings: Evaluation	17
Conventions	17
Topsoil and subsoil character	18
Rig and Furrow	18
Pits and postholes	18
Linear features	21
Paved and Sunken Areas	27
Finds	27
Discussion	27
The Southern Knoll, Area A	27
The Neolithic Enclosure, Site B	30
The Pit Alignment, Area C	30
Dispersed Features, Area D to F	31
Artefacts	31
Improvement Agriculture and Modern Truncation	33
Rossie Loch	33
Recommendations	34
Area A	34
Area B	34
Area C	35
Areas D to F	35
Standards and post-excavation stages	35
Scope for enhancement	35

Conclusion	36
References	37
Documentary	37
Cartographic.....	38
Appendix 1: Registers.....	39
Trench Summaries	39
Context Register	58
Photographic Register	64
Appendix 2: Discovery & Excavation in Scotland	86
Contact Details	87

Figures

Figure 1: Known archaeological sites from desk-based assessment	8
Figure 2a: Detail from Adair's The East Part of Fife (1684).....	10
Figure 2b: Detail from Roy's Military Survey of Scotland (1747-55)	10
Figure 3: 1 st edition Ordnance Survey (1867) overlain by study area.....	11
Figure 4: 2nd edition Ordnance Survey (1897) overlain by study area	12
Figure 5: Trench Layout with deep and shallow trenches differentiated.....	15
Figure 6: Trench Layout with significant trenches highlighted	16
Figure 7a: Trench 13 from the southeast.....	19
Figure 7b: Trench 23 from the northeast	19
Figure 8a: Trench 25 from the west.....	20
Figure 8b: Trench 29 taken from the northwest.....	20
Figure 9a: Trench 65 from the south	22
Figure 9b: Trench 76 from the southeast.....	22
Figure 10a: North Northeast facing section through Pit [041] within Trench 38	23
Figure 10b: Paved Area [043] after cleaning of Trench 117	23
Figure 11a: Feature [050] from the east	25
Figure 11b: Curvilinear [055] from the north	25
Figure 12a: Pit features [065], [066] and [067] from the west.....	26
Figure 12b: Pit features [068] and [069] from the south	26
Figure 13: Sensitive Areas A to F after evaluation	29
Figure 14: Possible extent of Rossie Loch as proposed by Fife Council Archaeology Unit ..	32

Introduction

1. A programme of archaeological investigative works was required by Dalglish Associates on behalf of Laird Aggregates Ltd in respect of a proposal for mineral extraction at Kinloch House, Collessie, Fife. These preliminary archaeological investigative works were designed to determine the nature, form and extent of any archaeology present on the site and hence inform the appropriate mitigation to facilitate the extraction proposal.
2. The proposed extraction site occupies an area of some 66ha of pastoral and arable farmland to the south, southwest and southeast of Kinloch Farm (NGR: NO 281118). The ground lies 1.2km to the southwest of Collessie within the Howe of Fife. The farmland is rolling in form, with several small bodies of water across the western portion of the site which are remnants of the Rossie Loch that was present until the final stage of drainage in 1805-6. There are also two portions of woodland, one in the north eastern section and the other in the west central section
3. A number of potentially significant archaeological remains were known to exist within the potential extraction area; the majority of these remains were identified from cropmarks. The Scheduled Monument of Kinloch Souterrain (AMH811) is protected under the terms of Ancient Monuments and Archaeological Areas Act 1979. The archaeological investigative works described here did not directly impact on Kinloch Souterrain (AMH811) and Historic Scotland were advised of these works in advance.
4. An archaeological response, intended to minimise impact on significant remains, will typically prefer designing the extraction proposal to preserve significant monuments *in-situ* in line with current planning guidance. Alternatively, in the event that a more direct archaeological response is necessary mitigation based around the excavation under archaeological protocols may be proposed.
5. Rathmell Archaeology Limited were appointed by Dalglish Associates to undertake the development and implementation of archaeological mitigation works at Kinloch House, Collessie, Fife, as per the terms of the Method Statement (Gordon 2010) Agreed with the Fife Council Archaeologist.
6. This Data Structure Report presents the findings of the archaeological evaluation carried out from the 9th January 2011 to the 22nd February 2011.

Planning Context

7. Scotland has been altered by a series of historic decisions about the use of our land. The resultant modern landscape is a palimpsest of relict elements from these past decisions that contribute to form our historic environment. Our work examines the local historic environment to identify the significant contributing elements (sites) to enable design developments to enhance the historic environment and avoid adverse impacts.
8. The UK and Scottish Governments have passed legislation for the conservation and protection of the historic environment; this legislation has generated a range of relevant designations.

Table 1: Relevant historic environment designations

Designation	Explanation	Importance	Responsibility
World Heritage Sites	Described by UNESCO as exceptional places of 'outstanding universal value'	International	Historic Scotland and Planning Authority
Scheduled Monuments	Ancient monuments protected for archaeological interest under <i>Ancient Monuments and Archaeological Areas Act 1979</i>	National	Historic Scotland
Listed Buildings	Buildings of special architectural or historic interest protected under the <i>Planning (Listed Buildings and Conservation Areas) (Scotland) Act 1997</i> . Classified into (non-statutory) categories A, B and C(S) in	National, Regional and Local	Historic Scotland and Planning Authority

	decreasing order of importance.		
Conservation Areas	Areas of special architectural or historic interest can be designated as Conservation Areas, under the <i>Planning (Listed Buildings and Conservation Areas) (Scotland) Act 1997</i> .	Local	Planning Authority
Inventory Gardens and Designed Landscapes*	Gardens and designed landscapes of national importance are included on the inventory giving them protection through the planning system	National	Historic Scotland
Inventory of Battlefields*	Battlefields of national importance are included on the inventory giving them protection through the planning system	National	Historic Scotland

* When the provisions of the *Historic Environment (Amendment)(Scotland) Act 2011* commence they will make these inventories a statutory requirement. The level of protection for Inventory sites will continue at the same level in the planning regime as current under the *Town and Country Planning (Development Management Procedure) (Scotland) Regulations 2008*.

9. Sites without statutory protection are curated within the planning process by the planning authority. *Scottish Planning Policy* deals with all aspects of the Historic Environment with a view to its protection, conservation and enhancement. For archaeological sites *PAN 42 Archaeology* indicates that the principle of preservation *in-situ* where possible, and by record if loss cannot be avoided. Historic Scotland has also issued guidance that is a material consideration through their *Managing Change in the Historic Environment* series.
10. The Scottish Government in 2009 expressed their policy towards the management of change in the historic environment through their Scottish Historic Environment Policy. Of note in this context:

The protection of the historic environment is not about preventing change. Ministers believe that change in this dynamic environment should be managed intelligently and with understanding, to achieve the best outcome for the historic environment and for the people of Scotland. Such decisions often have to recognise economic realities. Scottish Historic Environment Policy, July 2009

11. The local planning authority, Fife Council, delivers the Development Plan through a series of Structure and Local Plans.

Fife Structure Plan 2006 - 2026

12. The Structure Plan identifies the importance of protecting and enhancing the historic and built environments which gives Fife its sense of place. The relevant policy is:

Policy env5: Built Environment

The character, appearance and setting of designated built or cultural heritage sites will be protected from harmful development. Local Plan policies will provide protection for the built and historic environments and for archaeology.

Fife Minerals Subject Local Plan 2004

13. The adopted Fife Minerals Subject Local Plan 2004 identified within Chapter 5 Environmental Protection that the protection of the built heritage is a relevant consideration in a minerals application and would be treated in accordance with the existing development plan. Further, within Appendix 7 Development Control Guidelines, this local plan provides recommendations as to the scope of impacts that should be assessed for a proposal. These include:

Environmental Impacts

The extent of the short, medium, long term and cumulative impacts, both positive and negative, on the landscape and natural environment by virtue of the scale, type, location and length of proposed operations and the

quality and extent of mitigation and restoration proposed including:

...

(g) The extent of loss or protection/enhancement, rescue and interpretation of archaeological/architectural/historic/cultural resources, in particular those of regional significance (e.g. Listed Buildings, Outstanding Conservation Areas and their settings, sites within the Inventory of Gardens and Designed Landscapes, Scheduled Ancient Monuments and Archaeological Sites and Areas of Regional Importance – archaeological information is available from the Archaeology Unit).

14. The Fife Minerals Subject Local Plan identifies the area of the proposed extraction as an area of overall Low Protection based on mapped constraints. However, the same Local Plan identifies constraints that are not mapped on their proposals map and provides their level of protection.

Table 2: Protection level for factors not mapped in Fife Minerals Subject Local Plan 2004

Factors not mapped	Level of Protection
Scheduled Ancient Monuments and Non Statutory Register Sites	Very High
Category "A" Listed Buildings and their settings	Very High
Sites included in or proposed for inclusion in the Inventory of Gardens and Designed Landscapes	High
Archaeological Sites and Areas of Regional Importance	High
Category "B" and "C" Listed Buildings and their settings	High

Finalised St Andrews & East Fife Local Plan 2009

19. The Finalised St Andrews & East Fife Local Plan was published for consultation in 2009. This local plan is currently being prepared for Examination in Spring 2011, with the intention of adoption in late 2011 or early 2012.
20. Through a series of specific policies this Local Plan identifies the approach that should be taken to the historic environment. Of particular note are the following three policies;

Policy E8 Listed Buildings

Development affecting a listed building, or its setting, shall preserve the building, or its setting, or any features of special architectural or historic interest which it possesses.

The layout, design, materials, scale, siting and use of any development shall be appropriate to the character and appearance of the listed building and its setting.

Policy E11 Historic Gardens and Designed Landscapes

Development affecting Historic Gardens and Designed Landscapes shall protect, preserve, and enhance such places and shall not impact adversely upon their character, upon important views to, from or within them, or upon the site or setting of component features which contribute to their value.

Policy E12 Ancient Monuments and Archaeological Sites

Scheduled Ancient Monuments and other identified nationally important archaeological resources shall be preserved in situ, and with an appropriate setting. Developments that have an adverse effect on scheduled

monuments or the integrity of their setting shall not be permitted unless there are exceptional circumstances.

All other archaeological resources shall be preserved in situ wherever feasible. The significance of any impacts on archaeological resources and their settings will be weighed against other merits of the development proposals in the determination of planning applications.

The developer may be requested to supply a report of an archaeological evaluation prior to determination of the planning application. Where the case for preservation does not prevail, the developer shall be required to make appropriate and satisfactory provision for archaeological excavation, recording, analysis, and publication in advance of development.

Where compatible with their preservation, proposals for the enhancement, promotion and interpretation of ancient monuments and archaeological sites will be supported.

21. The supporting documents for the Local Plan also include a sequence of designation maps that includes Designation Map 01: Areas of Archaeological Regional Importance.

Archaeological and Historical Background

22. The desk-based assessment prior to the commencement of the intrusive evaluation identified five known significant archaeological sites within the potential extraction area (see Table 3 and Figure 1). One of these sites, Kinloch Souterrain (Site 2) is protected as a scheduled monument under the terms of the Ancient Monuments and Archaeological Areas Act 1979.
23. The whole of the potential extraction area lies within the Howe of Fife Area of Archaeological Regional Importance. However, there are no other historic environment designations are present within the proposed extraction area (see Table 1).

Table 3: Known Archaeological Sites within potential extraction area

Site	Site	Description	Canmore Id	HS Reference
1	Kinloch Farm, Neolithic ditched enclosure	Severely truncated two ditched enclosure subject to small scale excavation in 1980s.	30170	
2	Kinloch, Souterrain	C shaped souterrain identified from 1983-4 transcribed in 1990, having been exposed in 1933 by ploughing.	30149	AMH811
3	Kinloch, Cultivation marks, Enclosure (possible)	Cropmarks from 1983-4 transcribed in 1990 show traces of agricultural activity and possible enclosure in area overlying Site 2 and 4.	30172	
4	Kinloch, Unenclosed Settlement	Cropmarks from 1983-4 transcribed in 1990 show oval marks that may be houses and pits mainly to east and southeast of Site 2.	30173	
5	Kinloch, Pit Alignment	Cropmarks from 1984, transcribed in 1990 show an arc of pit-like features.	30226	

24. To the immediate north of the potential extraction area is the settlement of Kinloch. This settlement includes six buildings listed under Planning (Listed Buildings and Conservation Areas) (Scotland) Act 1997. These centre around the grade B Kinloch House (LB 2455)

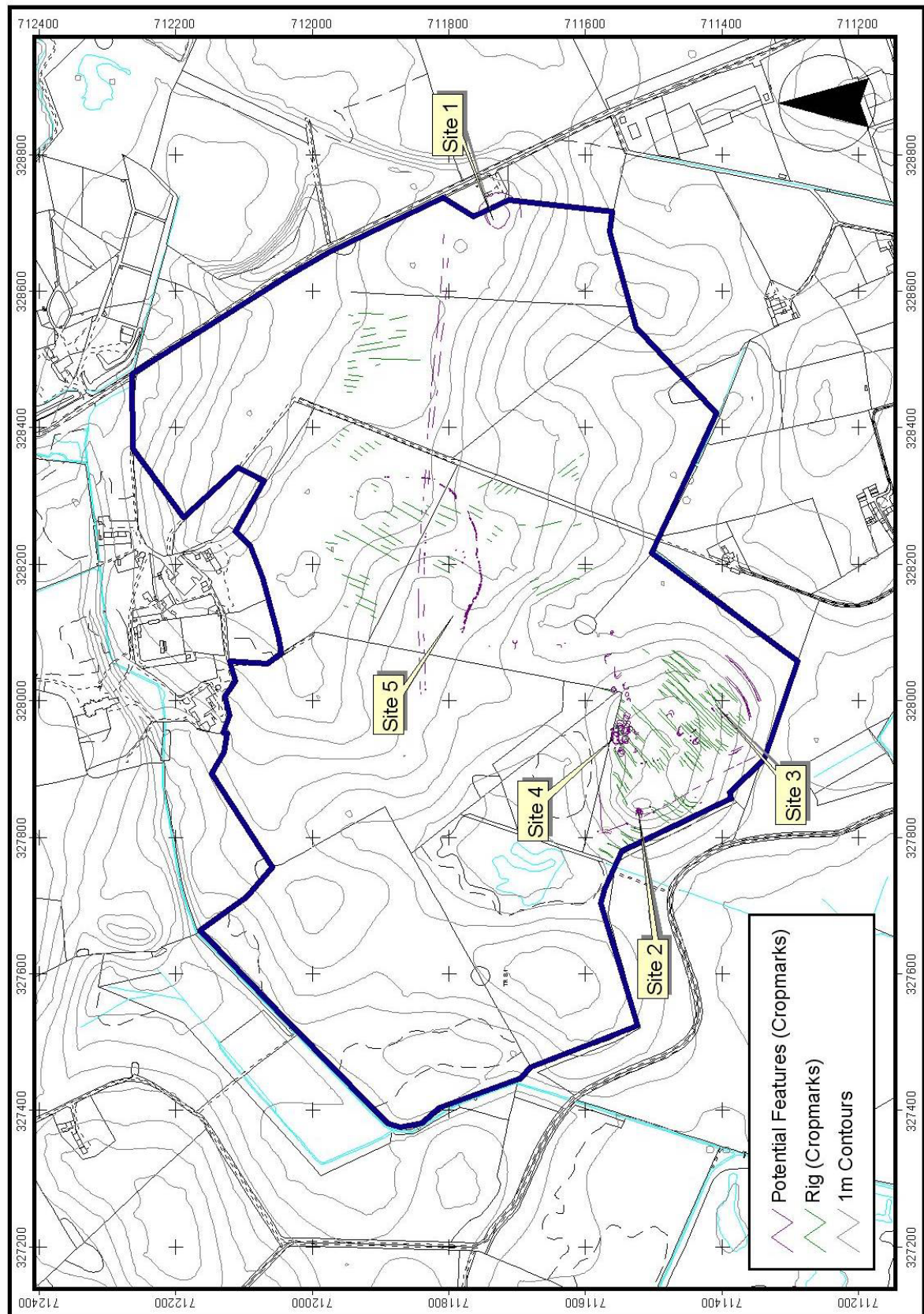


Figure 1: Known archaeological sites from desk-based assessment

whose mid to late nineteenth century external structure contains at its core a 1700s house. Associated with Kinloch House are the early nineteenth century Kinloch Farmhouse (grade B, LB 2456) and mid nineteenth century Estate Cottage (grade B, LB 4303), Dovecot (grade B, LB 4305) and Summer House (grade C(S), LB 4304). A remodelling of Kinloch House in 1921-3 by Sir Robert Lorimer also saw the construction of a Lodge House (grade C(S), LB 2522).

25. Previous archaeological works within the potential extraction area are limited to the historic investigation of the Kinloch Souterrain in 1933 (Site 2) and the 1980s small scale excavation of the ditched enclosure (Site 1). All other work has been remote, through oblique aerial photography undertaken for archaeological prospection and the subsequent rectification and transcription of the identified sites.

Neolithic Enclosure, Site 1

26. Just to the east of the potential extraction area a double ditch enclosure (Site 1) was investigated prior to the building of a gas utility building in the early 1980s (Barber 1983). The site (Canmore Id: 30170) had been initially identified from aerial photographs, which showed two concentric arcs suggesting concentric ditches. The inner ditch being complete and the outer missing one third of its length in the north and west.
27. Barber's excavation consisted of a radial trench which revealed two ditches; finds from these ditches included pottery and charcoal. Several other plough truncated features were revealed which also contained pottery and charcoal. Radiocarbon dates from charcoal recovered from the inner ditch returned dates of 2775+/-70bc (GU-1375) which would place an occupation phase within the early to middle Neolithic.
28. Conversely study of the pottery placed the assemblage most likely in the late Neolithic to Early Bronze Age. These dates seem to indicate that there had been a lengthy occupation of the site

Kinloch Souterrain, Site 2

29. Within the western portion of the potential extraction site, is the Scheduled Monument of Kinloch Souterrain (SAM811). The souterrain was uncovered during ploughing in 1933 and was partially excavated at the time by the landowner. Finds reported from these works include a yellow bead, animal teeth and pieces of charcoal. However, these works were not competently undertaken or reported.
30. Souterrains are underground structures found across Scotland dating from the late or Roman Iron Age. These vary greatly in shape and form, though they usually form typologically distinct groups within geographical areas. Representatives of the 'Southern Pictland' group (Wainwright 1963), of which the Kinloch Souterrain is one, consist of a curving underground passageway, which sometimes has one or more side chambers. The passages are usually lined with drystone walling although wood-lined souterrains have also been discovered (Alexander & Rees 1997). However, the identification of Kinloch Souterrain through ploughing in 1933 suggests that this is predominantly a stone built structure and may at that time have survived as a subterranean void.
31. From aerial photographs Kinloch Souterrain appears to be 'C' shaped measuring 12m across, while the northern end narrows to what may be an entrance.

Other Cropmarks, Sites 3 to 5

32. The remaining three archaeological sites within the potential extraction area have been identified only from cropmarks seen in aerial photographs of the area. Site 3 and Site 4 both cover a comparable area centred on the previously discussed Kinloch Souterrain (Site 2) which lies at the summit of a small knoll. The three-fold division of this knoll between these sites reflects the earlier discovery of Site 2 (in 1933) and the inferred differing origin of the cropmarks termed Sites 3 and 4. All these cropmarks were initially identified on oblique aerial photographs that were taken during 1983 and 1984; the visible cropmarks were subsequently transcribed in 1990 by the RCAHMS.

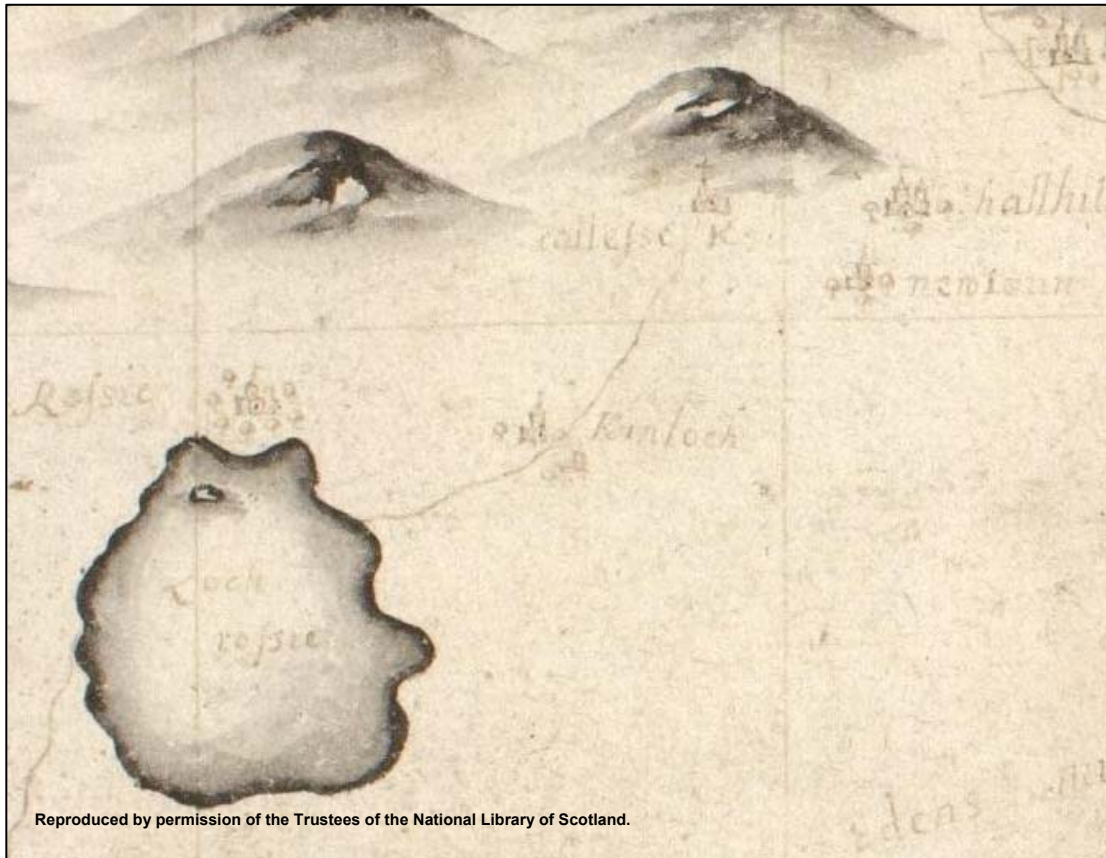


Figure 2a: Detail from Adair's The East Part of Fife (1684)



Figure 2b: Detail from Roy's Military Survey of Scotland (1747-55)

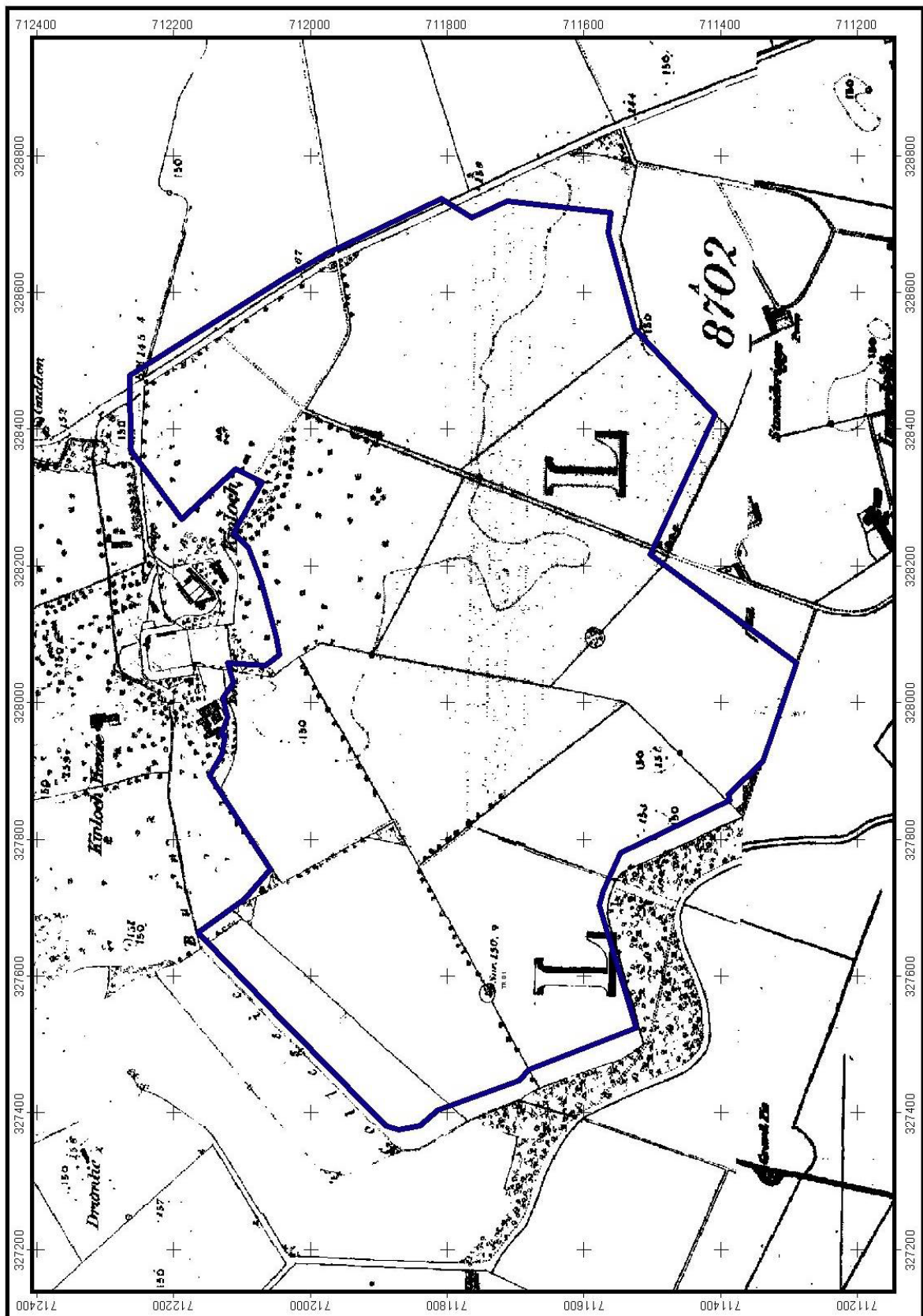


Figure 3: 1st edition Ordnance Survey (1867) overlain by study area

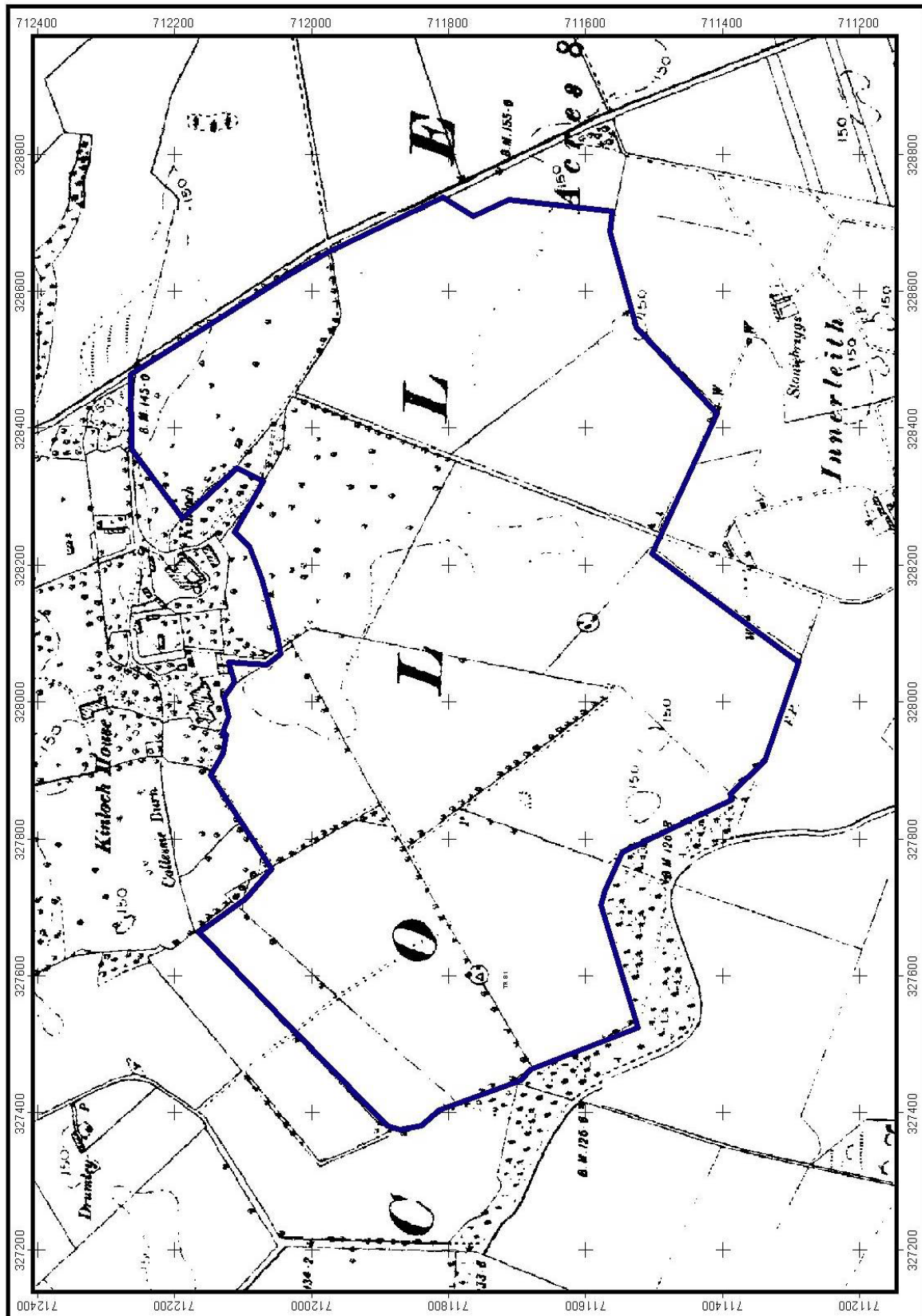


Figure 4: 2nd edition Ordnance Survey (1897) overlain by study area

33. Cropmarks are a manifestation of the effect of underlying sediments on the growth of crops which have been planted in the ploughsoil. The effect is especially marked in relation to buried archaeological features. As such when photographed at the right time of the crop growth cycle and in the right light conditions, cropmarks can be recorded. In addition the cropmark is only a representation of the archaeological feature that actually of a shallow enough depth to affect the crop. It is therefore possible for the archaeological feature or features to extend beyond what is visible in the cropmark or conversely for the cropmark to be the only surviving visible remains of a highly truncated feature.
34. Site 3 has been interpreted as a series of cultivation marks indicating the presence of furrows from an area of rig and furrow which run northeast-southwest (see green transcriptions on Figure 1). Also included with these cultivation marks are a series of linear features to the west and southeast of the knoll which may either represent field boundaries or enclosure of some form.
35. Site 4 appears to be an unenclosed settlement, which the cropmarks of Site 3 overlay. These settlement traces (centred on NO 279 115) include at least 9 circular or oval marks and several arcs of ditch, all possibly houses with diameters ranging between 7m and 11m. Several circular marks intersect (for instance at NO 2794 1155) indicating that there was more than one phase of house construction. A number of shadowy marks, crescents, arcs of ditch and pits are scattered across the same field to the south, and any further traces immediately to the north are obscured by woodland cover.
36. The arbitrary nature of the separation of Site 2 becomes evident when considering Site 4 which is very likely to be associated with the construction and use of the souterrain in the late to Roman Iron Age. However, we have sustained this division as it reflects the archaeological databases and the legal designation of the ground surrounding the souterrain as a Scheduled Monument.
37. The last site, Site 5 is describe as a pit alignment, which appears to 330m in length and forms an intermittent arc consisting of features (probably pits) running in a sinuous course from west (from NO 28101178) to east before curving to the north (ending at NO 28321189). The first 40m and a stretch around NO 28301179 appear to be represented by a paired line of pits, though more generally where identified only single pits have been transcribed. The interval between pits, where identifiable, appears to be roughly 2m.

Historic Land Use

38. Historically recorded settlement at Kinloch, to the north of the potential extraction area, is known from at least 1527 when James V granted '*half the lands, the mill and the cottage of Kinloch to Thomas Scott*' (Millar 1895; Canmore Id 30219). There are some suggestions of even earlier activity associated with this mill and lands at Kinloch as Sibbald claims to have seen three original charters of '*about Alexander III's reign*' (1249-1285) granted by '*the second Roger de Quinci*' (Roger de Quincy, second Earl of Winchester, (?1195-1265), Constable of Scotland), dealing with a mill (Sibbald 1803).
39. Early mapping for Fife is available from Adair's '*The East Part of Fife*' from 1684 (Figure 2a) which clearly shows Kinloch, straddling a burn that flows into Rossie Loch. No other settlement is shown to the east of the loch, where the study area lies. The continued development of Kinloch is attested through the construction of Kinloch House in c. 1700 while Sibbald (1803, 389) describes Kinloch in 1710 as '*The seat of Mr James Bruce ... who hath built a new house here with gardens and a park*'.
40. The first detailed mapping comes from Roys' Military Survey of Scotland of 1747-55 (Figure 2b) which shows the area as consisting of unenclosed arable land with two tree plantations, a square stand in the west and an 'L' shaped stand in the east. Also depicted are two settlements. The western settlement is situated to the north of the square stand of trees and is shown as four structures marked as 'Killwhoist'. Garden areas appear to the east of one of the buildings. The Eastern settlement is unnamed has two structures with garden areas that are nestled in the angle of the 'L' shaped tree stand. Both these settlements appear to be outwith the proposed extraction area the 'Killwhoist' settlement

would seem to correlate to the modern settlement of Easter Kilwhiss which is approximately 500m to the south of the extraction site.

41. Also depicted on Roy's map is Rossie Loch which appears to encompass the northwestern portion of the potential extraction area. Rossie Loch was the largest body of freshwater within Fife until the nineteenth century when it was finally drained. The first known attempt to drain the loch was in 1635 by Sir James Scott of Rossie which was a failure. A second attempt was made in 1740 by the Cheapes of Rossie who had acquired Rossie in 1669, with the drain created visible on Roy. This attempt was only partially successful, gaining:

'300 acres, which produces a considerable quantity of hay, and pastures, during the summer season, above 120 head of cattle. In winter, however, it has still the appearance of a loch, and is frequented by a great variety of wild fowl....' (Walker 1791-99)

42. The final stage in draining the loch was made in 1806 by one Captain Cheape, which was more successful and reclaimed 250 acres of land leaving a mildly marshy area of 50 acres in the centre that could be used for hay (MacFarlane 1834-45). Drainage attempts continued during the nineteenth century to manage this final marshy area.
43. By 1867 on the 1st edition Ordnance Survey (Figure 3) Rossie Loch is no longer depicted having been drained half a century previously. The majority of the potential extraction area is depicted as parkland to the south and southeast of Kinloch House with what appears to be fields in the west that curve round to the south by Innerleith. This depiction is a radically altered landscape from that shown on Roy with the wholesale enclosure of land having been undertaken. The 'Killwhoist' settlement appears to have become Easter Kilwhiss consisting of seven structures including what appears to be a typical U-shaped farmhouse. Possible garden areas or enclosures are also depicted. What has become of the unnamed settlement on the other hand it is a little harder to discern, it may have become Innerleith or one of the other three small settlements between Innerleith and Giffordtown to the east.
44. Innerleith is sandwiched in the west with another wood plantation that follows the eastern side of a winding road. A second road strikes northwest from Innerleith before forking to the northeast through the parkland and continuing northwest to the winding road to the west. Three structures are depicted between the northeast fork and Innerleith.
45. On the 2nd edition Ordnance Survey of 1897 (Figure 4) the parkland has been reduced in favour of the expansion of fields although the wood plantation along the road to the west is still present. The only other change from the 1st edition is that the north western fork of the road from Innerleith has disappeared. There is also little to no difference on the 3rd edition Ordnance Survey of 1906.

Project Works

46. The programme of works forming an archaeological evaluation was carried out between the 9th January and the 22nd February 2011. The works were carried out in keeping with the agreed Method Statement (Gordon 2010) with a small proportion of the trenches being subject to minor shuffling to ensure safety due to the presence of a high pressure and intermediate pressure gas mains.
47. In addition there were two extensions excavated on Trenches 30 and 130 for the purpose of establishing the existence of archaeological features known from aerial photographs at the western and northern end of Site 5, the pit alignment.
48. The works comprised the machining of sample trenches (see Figure 5) across the proposed site, totalling 5% of the available land (area of 61.8ha or 15448 linear meters of trenches using a 2m bucket). In total 15573 linear meters were excavated exceeding the required meterage.

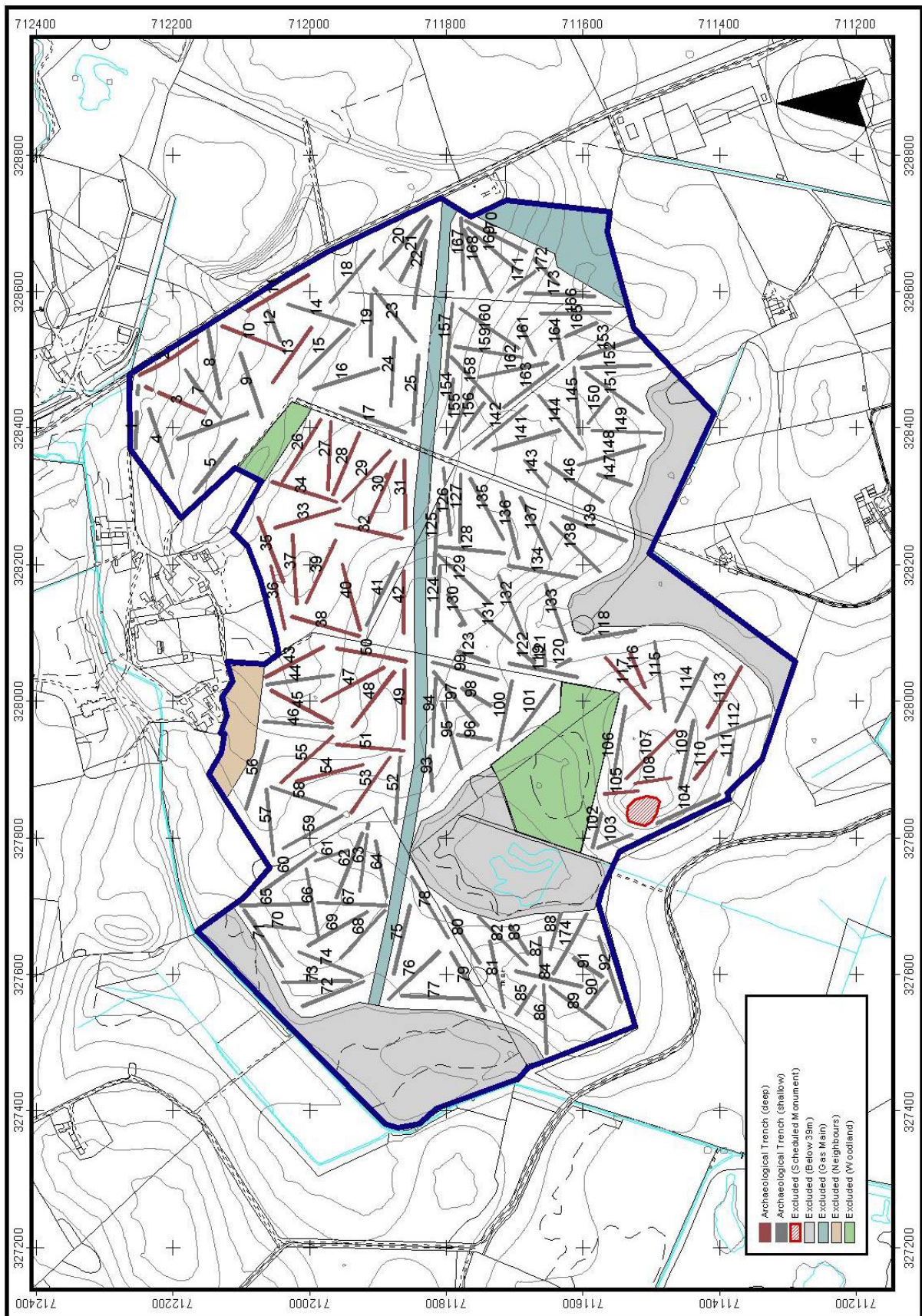


Figure 5: Trench Layout with deep and shallow trenches differentiated

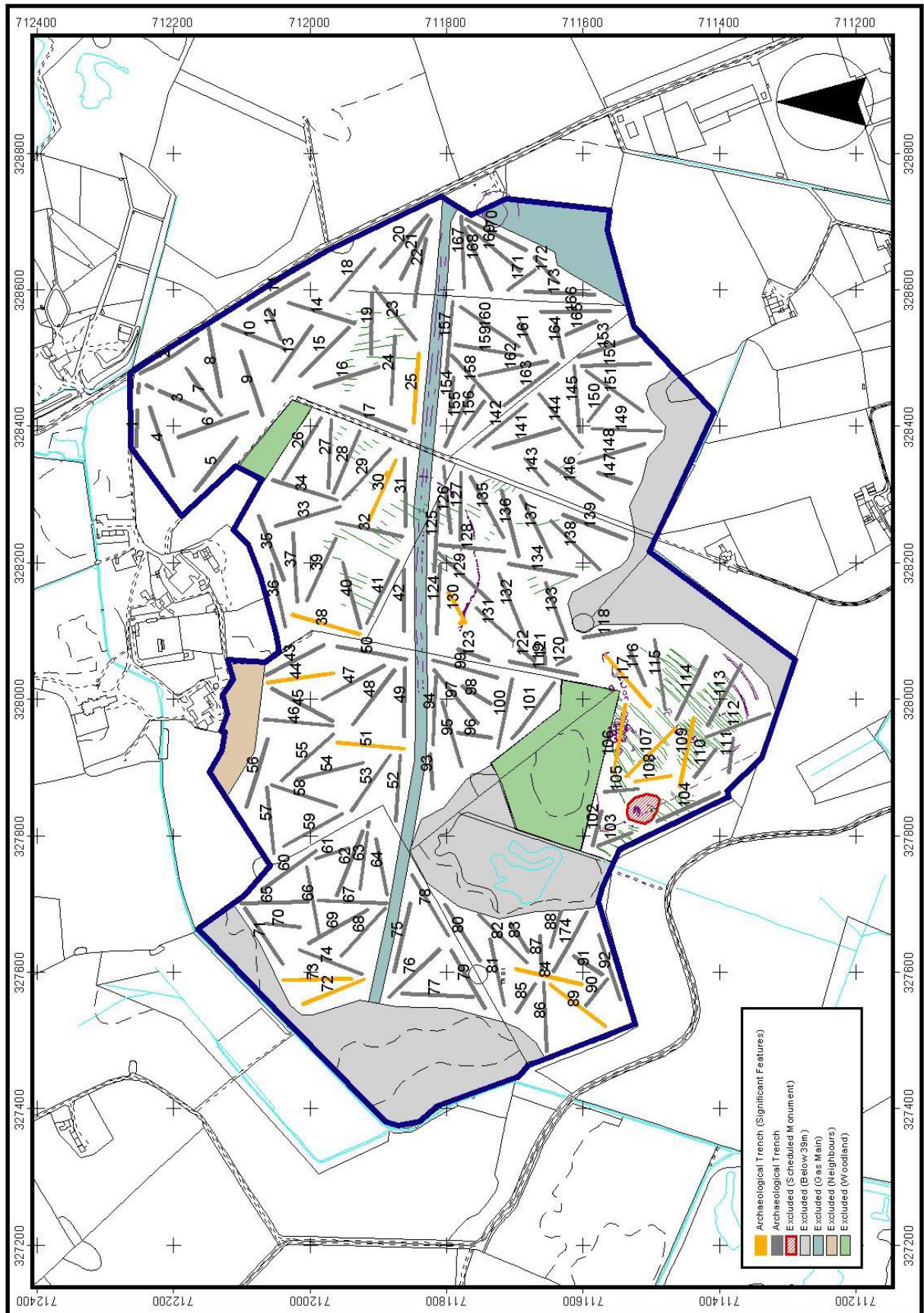


Figure 6: Trench Layout with significant trenches highlighted

49. The site consisted of both pastoral and arable fields, only one of the arable fields contained a crop which was winter wheat. Some livestock were present on north western portion of the site in the form of Jacobs Sheep, but their presence did not interfere with the on-site works
50. During the archaeological works the weather in general was very cold and mixed between dry and wet, though primarily dry.
51. Certain areas across the extraction area were excluded from the archaeological works (Figure 5). These consisted of two areas of mature wooded plantation that would be inimical to archaeology, ground below 39m OD was also excluded as being the most likely height for the upper level of the Rossie Loch. A corridor 20m wide running east to west across the site was also excluded due to the presence of two gas mains (Intermediate and High pressure) running across the site, as well as an area at the south eastern edge of extraction area which contained off-shoots of the main gas pipelines. An area on the northern edge of the site was also excluded, as due to its proximity to housing no extraction works are intended to be carried out. The last area is the Scheduled Monument of Kinloch Souterrain located in the southern portion of the site.
52. The presence of two gas mains running east to west across the proposed extraction area presented a safety issue as such Scotland Gas Networks were informed of the archaeological works, and one of their representatives was sent to mark out the line of the pipelines and issue safety guidance. A buffer zone of 30m centred on the pipelines was agreed for safety purposes, into which no evaluation trench was allowed to encroach.
53. During the work a geotechnical team were on site for three days in February investigating depth of the water table across site. Due care was taken to ensure that their investigation pits were placed within the end of evaluation trenches where no archaeological features were present.
54. Continuous liaison was carried out with the Fife Council Archaeology Unit to keep them apprised of progress and archaeological finds. The council archaeologists' Douglas Speirs and Steve Liscoe carried out a site visit in the week starting the 14th February.
55. Any exposed features were investigated to determine their archaeological significance; every trench was planned with its stratigraphy recorded every 25m regardless of the presence or absence of significant features. All works were conducted in accordance with the Institute for Archaeologists' Standards and Policy Statements and Code of Conduct and Historic Scotland Policy Statements.

Findings: Evaluation

56. In total the 5% evaluation was delivered through 174 trenches excavated using a 12 and a 30 ton 360° tracked excavators. Presented below are a summary description of the significant features and finds located by these works; Figure 6 shows the location of the trenches machined and those trenches with significant features located within them have been highlighted to aid comprehension.
57. A standardised description of each trench is contained within the *Trench Summaries* section of Appendix 1: Registers at the rear of this report; all trenches are also depicted on Figure 5 and 6. Appendix 1 also contains the registers for context description, photography, drawing, sampling and finds from the project.

Conventions

58. Where significant features are discussed their location will normally be quoted as a distance along the relevant trench (such as +23m). This distance was measured from the end of the trench quoted first for the orientation of the trench in the *Trench Summaries* in Appendix 1.
59. All depths given for features are given from the base of the trench after the removal of topsoil and/or modern overburden unless otherwise stated. The reader should presume a

homogenised ploughsoil was present in all trenches over the upper surface of the drift geology unless an alternative description is provided.

60. The context is the basic archaeological unit of description relating to either a structure, cut or sediment of common characteristics. Structures (such as walls or built surfaces) and cut features (normally identified as they cut the underlying subsoil) are denoted by squared brackets (e.g. [040]). Sediments are denoted by rounded brackets (e.g. (041)).

Topsoil and subsoil character

61. The topsoil across the site ranged between 200mm and 1500mm in depth, although typically it reached no deeper than 500mm. A differentiation was made between shallow trenches and deep ones, those trenches below 500mm in depth for the majority of their length were considered shallow one. Trenches over 500mm in depth for the majority of their length fell into the deep category (see Figure 5 for trench depth summary mapping).
62. The majority of the deep trenches, 31 in number, fell into the north central and north eastern portion of the site while there were only 8 trenches in the south portion. These deep trenches appeared to reveal a more undulating underlying topography than evident on the surface. It would suggest that the various hollows in these areas have been filled in over the years by both natural and farming processes. The exception to this would be Trench 2 which was subject to the dumping of detritus over the years in an attempt to create an area of hard standing.
63. The natural subsoil was exposed in all trenches opened, typically with the upper surface of the subsoil exposed as the bed of the trench. The predominant subsoil exposed was a variable sand and gravel which commonly exhibited bioturbation and evidence of burnt roots of large bushes and and/or small trees, across the site. In addition a dark black/brown humic silt sand was observed in approximately a dozen trenches either on the western side of the study area (Trenches 65, 77 and 79) or across the belt of ground to the north of the southern knoll (Trenches 88, 101, 120, 122, 131 to 134 and 138).

Rig and Furrow

64. Agricultural furrows [038], [045] were evident crossing many of the trenches, being visible at the base of the ploughsoil and cutting into the subsoil. The furrows were intermittent with spacing ranging from five to twelve metres from centre line to centre line. In general they were two to three metres wide and were quite shallow in nature with excavated examples being ≤ 200 mm deep. The fill of the furrows was similar to the topsoil generally being mid brown silty sand varying slightly to mid grey brown silty sand.
65. The alignments of the furrows varied across the site though were consistent within localised areas. Northeast to southwest was the main alignment for furrows, followed northwest to southeast then north to south. While furrows were present across the whole site they varied in frequency, with the eastern edge of the site having the most noticeable absence. The highest occurrence was in the most southern field over the southern knoll which also contained the Kinloch Souterrain.
66. The continued arable use of the ground could be shown through the presence of modern plough scars which were also evident across many trenches.

Pits and postholes

67. Fifteen features were uncovered that fall into the categories of pits, postholes and pit/postholes. In general those features over 500mm in diameter are taken to be pits while those under 500mm are considered postholes. The difference in size is an indication of possible function; a posthole only requires being large enough to hold a post and may contain stones for packing around the post. While a pit which is larger may have been dug to extract sand & gravel, to create an obstacle or for the purpose of rubbish disposal. The third category are those features that while in size are considered pits have the characteristics of a posthole e.g. packing stones, post-pipes and ramps.



Figure 7a: Trench 13 from the southeast



Figure 7b: Trench 23 from the northeast



Figure 8a: Trench 25 from the west



Figure 8b: Trench 29 taken from the northwest

68. Five features can be characterised as pits on this coarse criteria, these being features [010], [022], [023], [025] and [059]. Feature [010] within Trench 25 was an irregular circle in plan measuring 1.5m by 1.37m and 0.2m deep, with a dark brown black sandy fill with frequent charcoal and occasional burnt bone inclusions.
69. Pits [022], [023] and [025] were uncovered in Trench 107 in close association with one another at +24.3m, +25.2m and +30m located within the bed of the trench. All three were oval in plan, with [022] measuring 1.1m by 0.5m, [023] 0.94m by 0.72m and [025] 1.12m by 0.78m and 0.4m deep with near vertical sides and a rounded base. Each had a mid brown silty sand fill with frequent sub rounded and rounded small to medium sized stone inclusions.
70. Pit [059] was situated in Trench 44 at +14m, was oval in plan measuring 0.84m by 0.7m and 0.28m deep, with near vertical sides and a flat base. It contained a brown grey sandy silt with frequent rounded stone inclusions.
71. The five features that can be characterised as postholes were features [027], [031], [032], [041] and [049]. Features [027] and [031] were both uncovered in Trench 107 at +31.8m and +97.7m. Feature [027] was circular in plan measuring 0.4m in diameter with a mid grey brown silty sand fill with frequent rounded and sub rounded small stone inclusions. While [031] was circular in plan measuring 0.47m in diameter and 0.19m in depth with steep sloping sides and a concave base.
72. Posthole [032] was from Trench 108 at +3.2m and was circular in plan measuring 0.3m in diameter. With near vertical sides, a flat base and a mid grey brown silty sand fill. [041] at +46.2m within Trench 38 was circular in plan measuring 0.5m by 0.44m and 0.28m deep with near vertical to steep sloping sides and a flat base. It contained two fills (063) and (064), the lower fill (063) was an orange brown sand with frequent small rounded stone inclusion, while the upper fill (064) was a dark brown silty sand with frequent rounded and sub angular large stone inclusions and frequent prehistoric pottery sherds (Figure 7a).
73. Feature [049] at +75.5m in Trench 84 was irregular circle in plan measuring 0.43m in diameter with near vertical sides and a concave base. Its fill was a black silty sand with occasional small stone inclusions. The on site interpretation of this feature was a possible posthole or possible burnt root given its similarity to other more definite examples.
74. There are five features that fall into the uncertain third category of pit/postholes [065], [066], [067] from Trench 130 (Figure 9a & 9b) and [068], [069] from Trench 30. Both sets of features were uncovered within the trench extensions excavated so were in close association with one another, being between 2 to 2.5m apart. Feature [065] was circular in plan measuring 0.9m in diameter 0.22m in depth with near vertical sides and a flat base. The fill was a brown silty sand with infrequent small to medium sized stone inclusions. Feature [066] which was 1.8m to the east of [065], was sub circular in plan measuring 0.94 by 0.75 and 0.36m deep with near vertical sides and a flat base. Its fill was a brown silty sand with infrequent small to medium sized stone inclusions. Feature [067] lay 1.2m to the east of [066] and was circular in plan measuring 0.45m in diameter with a brown silty sand fill with occasional small to medium sized stone inclusions.
75. Feature [068] was circular in plan, 0.48m in diameter with a grey brown sand fill with occasional sub-angular stone inclusions. While feature [069] was also circular in plan and 0.48m in diameter and 0.34m in depth with a steeply sloping sides and a flat base. Its fill was a grey brown sand with occasional sub-angular stone inclusions.

Linear features

76. Within the evaluation trenches seven features ([026], [033], [050], [051], [051a] [052] and [055]) were uncovered that followed a linear form but their characteristics were such that they were not evidently furrows or agricultural ditches.

77.



Figure 9a: Trench 65 from the south



Figure 9b: Trench 76 from the southeast



Figure 10a: North Northeast facing section through Pit [041] within Trench 38



Figure 10b: Paved Area [043] after cleaning of Trench 117

78. Feature [026] at +30.8m in Trench 107 was aligned north to south and measured 2.56m within the trench 0.48m wide and 0.12m deep. It had sloping sides and a slightly curved base with a mid grey brown silty sand fill with frequent rounded to sub rounded small stone inclusions. Feature [033] was at +39.2m in Trench 108, it was aligned northwest to southeast measuring 2m long within the trench by 0.86m wide and 0.09m deep with slightly sloping sides and an irregular base. Its fill was a mid grey brown silty sand.
79. Feature [050] (see Figure 11a) was at +36.4 within Trench 89, it was initially thought to be a pit but upon investigation appeared to be a terminal for a ditch. Within the trench it was rectangular in plan with its eastern end rounded, it was aligned northwest-southeast and measured 1.8m long by 2.15m wide and up to 0.65m deep. Its sides varied from gently sloping to near vertical and had a concave base, with a fill of brown orange silty sand with frequent small to medium sized stone inclusions.
80. Linear feature [051] in Trench 72 (Figure 8b) was aligned northeast to southwest measuring 2.3m long within the trench by 1.25m wide and 0.26m deep. With sloping sides and a concave base and a brown silty sand fill with occasional small to medium sized stones. Linear [051a] was in Trench 73 and appears to be a continuation of linear [051]. Also in Trench 73 was linear [052] which ran parallel with [051a], it measured 2m long within the trench by 1.5m wide with a brown silty sand fill with occasional small to medium sized stone inclusions.
81. Feature [055] within Trench 51 initially aligned northwest to southeast before curving round to the south-southwest was a curvilinear measuring 9.5m long, 0.7m wide and 0.18m deep. It had sloping sides with a concave base and a grey brown silty sand fill with frequent rounded and sub-angular stone inclusions (Figure 8b).
82. All the fills for these features appear to be single homogenous deposits, no evidence of gradual silting, slumping or other signs of features been open to the elements over time were present. Though it should be noted that with the exception of [050] all the other features are quite shallow and appear to be truncated, most likely by ploughing.

Table 4: Summary of significant features by trench (see Figure 6 for locations)

Trench	Pits	Post-holes	Pit / Post	Linear Features	Paved / Sunken	Finds
25	1					
30			2			
38		1				Yes
44	1					
51				1		
72				1		
73				2		
84		1				
89				1		
106					3	
107	3	2		1		
108		1		1		
109				1		
117					2	
130			3			
Totals	5	5	5	8	5	N/A



Figure 11a: Feature [050] from the east



Figure 11b: Curvilinear [055] from the north



Figure 12a: Pit features [065], [066] and [067] from the west



Figure 12b: Pit features [068] and [069] from the south

Paved and Sunken Areas

83. Within Trench 117, two roughly paved areas were uncovered, (042) at +35.2m and (043) at +85.5m, both of which sat in the upper surface of the subsoil. The smallest area (042) was 4.5m long within the trench and consisted of large and medium sized stones in two 1.4m wide bands either side of a 1.5m gap where the upper surface of the natural subsoil was exposed. The larger area (043) covered the breadth of the trench and was 7.9m long within the trench; at either end it showed what appeared to be curving edges. The surface was formed of flattish large and medium sized sub-angular and sub-rounded stones that were laid in a rough manner (Figure 7b).
84. In the case of both areas no bounding stones were present, neither was there any evidence of a boundary wall in either the form of a cut for a wall trench or postholes. The stone appear to be pressed into the natural subsoil as no bedding was present. No finds were recovered.
85. Within Trench 106 were three large sunken or cut features [017], [018] and [020] which within the confines of the trench appeared to be circular in plan, though their full extent was not revealed within the trench. On-site these features, given their form and nature, were interpreted as being very large truncated pits though they correspond with the positions of cropmark identified round houses grouped into Site 4. Given these conflicting interpretations, they are treated here as non-specific sunken areas.
86. Feature [017] at +39.4m was 5.8m diameter and 0.17m deep with gently sloping sides and a flat base. The fill was a dark brown silty sand with frequent rounded and sub rounded small to medium sized stone inclusions. Feature [018] at +77.6m was 7.6m diameter and 0.18m deep with gently sloping sides and a flat base and a dark brown silty sand fill with frequent rounded and sub rounded small to medium sized stone inclusions. While feature [020] at +89.8m was 7.8m diameter and 0.35m deep with gently sloping sides and a flat base and a similar fill to [017] and [018].

Finds

87. There was a general dearth of finds recovered from the evaluation trenches. In total ten finds were made during the evaluation, the majority of which were recovered from the topsoil during the excavation of the trenches while only one investigated feature proved to contain finds. Ceramic was the main type of find recovered, with the topsoil finds <1>, <5-9> appearing to be Late Medieval Reduced Ware, green glaze pottery. Find <10> was a selection of modern white glazed pottery that was present across the site.
88. Of particular interest were the finds <2> and <4> that were sherds of prehistoric pottery recovered from the only feature on the site to contain an artefact. These sherds of pottery were recovered from the upper fill (064) of pit [041] (Figure 7a). The sherds are decorated with both incised diagonal scores and raised ridge decoration.
89. Small fragments of burnt bone were also recovered from posthole [010]. As no fragments were large enough for bagging separately as a find, these fragments were sampled with the rest of the fill which included small fragments of charcoal.

Discussion

The Southern Knoll, Area A

90. While indicative of complex and extensive anthropic activity, the features located in trenches on the southern knoll (Trenches 102-117) did not reveal a coherent story. Numerous trenches revealed significant features (see Table 4) while others (e.g. Trenches 104 and 105) proved to be devoid of identifiable significant features. The significant features examined failed to exhibit identifiable relationships between the postholes, pits, ditch and sunken features.
91. When combined with the lack of artefacts, this makes it hard to elucidate the exact nature of the activity represented. What they did show is evidence of unenclosed settlement and agricultural activity spread across the southern knoll. While no artefacts

were recovered to allow general dating of the activity, the proximity of the features to the Kinloch Souterrain (Site 2, Canmore Id 30149, AMH811) may indicate a contemporaneity between them.

92. Souterrains are underground structures found across Scotland: these vary greatly in shape and form to such a degree that 'any suggestion of a common function is speculative in the extreme' (Armit 1999). Typologically distinct groups within geographical areas such as the 'Southern Pictland' group (Wainwright 1963), of which the Kinloch Souterrain is one, consist of a curving underground passageway, which sometimes has one or more side chambers. The most convincing theory to date, given the available evidence, is that they were used for storage of farm produce, in particular grain (Watkins 1980, Barclay 1980).
93. Souterrains are usually associated with surface structures like those identified at Carlungie (Wainwright 1963) and Newmill (Watkins 1980), with access to the souterrain obtained via an entrance located within the surface structure. While the origins of souterrains lie in the pre-Roman Iron Age, it was during the Roman occupation that they saw their heyday. The stored grain, along with other farm goods, was probably traded with the Roman military presence on the Gask Frontier and the Antonine Wall.
94. This provides a potential pattern for an area of unenclosed settlement in the Iron Age on this knoll of which the souterrain is but one element, as presented in the desk-based assessment during the presentation of Site 2 (the souterrain) and Site 4 (cropmarks showing and unenclosed settlement).
95. However, not all the indications of this unenclosed settlement from the cropmarks proved robust. A series of circular features [017], [018] and [020] were identified within Trench 106 that appear to relate to some of the unenclosed settlement cropmarks (Site 4) identified from aerial photography. On site investigation of these features failed to uncover any artefactual or other anthropic evidence. These features were initially interpreted as large pits or natural hollows. However they could also be the remains of an Iron Age Scooped structure, similar to one found at East Kinnear, near Leuchars (Driscoll 1997). The site at East Kinnear revealed a structure consisting of a 12m by 10m structure created from digging into the soft sands and gravel and retaining the sides with a coarse drystone wall. While no such wall was uncovered with the Kinloch features the material may have been removed and reused after the structure had fallen into disuse. However until further works are carried out these suppositions remain untested.
96. In contrast, two significant features were located in the two sunken paved areas within Trench 117, (042) and (043) (Figure 7b). They appear to be free standing paved areas with no evidence for walls or other retaining structures to explain their sunken location as uncovered within the evaluation trench. In addition nothing was recovered that could aid in dating them.
97. A number of sunken structures have been identified in Fife and two have been excavated at Hawkhill and Easter Kinnear (Driscoll 1997). Both proved to be sub-circular sunken stone built structures with floors formed from stone paving and rubble walls retaining the scoop in which they were formed. Radiocarbon and artefactual evidence dated these sites to the Pictish period, suggesting continuity in circular built form from the Iron Age and the use of subterranean structures perhaps suggesting broad parallels with the late Iron Age souterrains (ibid).
98. The paved surface exposed compare well with the flooring at Hawkhill, as does the curving nature of the limits of the paved surfaces as exposed in the trenches. However, the absence of a stone retaining structure does mark these are different from the two excavated examples. It is possible though that, as with the earlier souterrains, this emerging class of sunken structure vary in the use of stone or timber to construct a comparable building.
99. If the paved structures do relate to Pictish activity (this is far from certain) then it may illustrate a longevity of unenclosed settlement on the southern knoll from the late Iron Age into the early Medieval period.

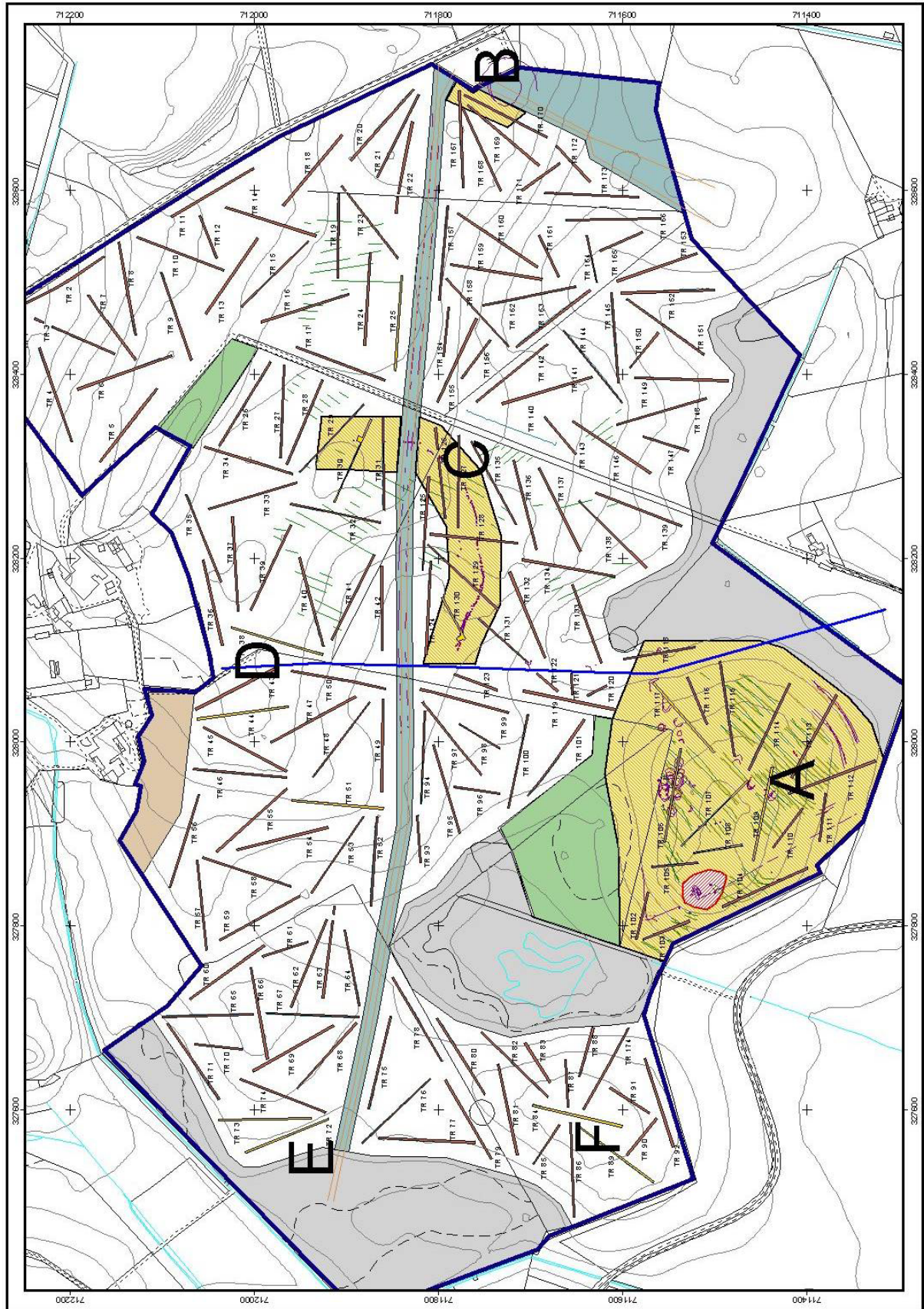


Figure 13: Sensitive Areas A to F after evaluation

100. An alternate suggestion for their purpose may be that they are the remains of a series of bases for rick stands. These were built for the purpose of allowing the corn to keep dry and help protect it against vermin. However these are post-medieval features that are usually found within corn yards attached to a farming settlement. The sunken character of these structures also conflicts with this potential interpretation.

The Neolithic Enclosure, Site B

101. The trenches in proximity to the known location of the Neolithic Enclosure failed to locate any significant archaeological features or finds. This suggests that there are not extensive archaeological features extending out from this known site into the study area. As the trenches were a sample of the landscape it cannot be stated definitively that more isolated discrete features related to this site are not present in the study area.

The Pit Alignment, Area C

102. Features [065], [066], [067], [068] and [069] (Figure 9a & 9b) from Trenches 30 and 130 are part of the pit alignment (Site 5, Canmore Id 30226) identified from aerial photographs of the area. A pit alignment is a type of prehistoric monument known from the Neolithic to the Iron Age, the function of which is poorly understood and unlikely to be unchanging over this long time period. They consist of a series of pits arranged in a straight or curving line, either as single line or double line of pits. They also can vary in length from a few metres to hundreds of metres.
103. The Knowes Farm pit alignment in East Lothian (LeLong & MacGregor 2007) illustrated the potential complexity of processes in a pit alignment. There 12 pits aligned east to west were excavated, the majority of pits appeared to have been left open for some time although three shallow pits at the western end of the alignment had been rapidly backfilled and each contained pottery sherds from a single Impressed Ware vessel.
104. Within the same project at Eweford East (ibid) two parallel lines of postholes were uncovered, running east to west, both approximately 100m in length. This illustrates that a monument of comparable form may prove to be a post alignment, the identifiable 'pits' having held the upright earthfast posts. Radiocarbon dating from these sites revealed several hundreds years of activity in the second half of the third millennium BC.
105. On occasion it can be difficult to determine whether the pits are intentional products of human activity or the product of a natural process. The pit alignment from North Straiton in Fife (Carter 1996) was described after excavation as an 'irregular straggle' of pits extending approximately 100m. While a radiocarbon dating placed in inclusions within the fills of the pits as being from the Neolithic period, the excavation was inconclusive as to whether the pits were anthropic or natural in origin.
106. Other variations are known in the form of embanked alignments which are alignments which have used the spoil from the pit to form a bank running parallel with the alignment; a second variant is the segmented alignment which is formed from a series of runs of pits on the same line.
107. The Kinloch pit alignment is of the curved variety stretching approximately 330m; consisting of an irregularly curving line of double pits that appear, given its irregularity and the presence of several breaks along its lengths may have been dug in sections. However it is also possible that the breaks along its length are a result of plough truncation rather than being deliberate. Given the relatively shallow depths of the pits investigated, varying from 220mm to 360mm, plough truncation appears to be a possibility.
108. Unlike the North Straiton alignment the pits from the Kinloch alignment given their form appear to be anthropic in origin. The presence of stones which could be post packing within the fill of the pits investigated may indicate that they held upright posts, though no post-pipes were identified in the excavated examples.
109. Given the curving nature of the alignment there was a suggestion that it may represent a circular enclosure. While this is a possibility, no return for an enclosure was uncovered

within the evaluation trenches to the north of the alignment, though this may be due to plough truncation. While curving alignments are known, they usually seem to be for delimiting a promontory of land, like the pit alignment at Meldon Bridge which enclosed an area of 8ha between the Meldon Burn and the Lyne Water (Speak & Burgess 1999). While the Kinloch alignment doesn't delimit a promontory of land between two bodies of water, it does wrap around the lower slopes of a rise in the landscape in close proximity to what would have been the edge of the Rossie Loch. This would have meant that the alignment would have been a lochside construction, effectively screening off an area between the alignment and the highest parts of the rise.

110. While pit alignments have been dated from the Neolithic to the Iron Age, the lack of artefactual evidence from the investigated features it is hard to place a date on the Kinloch pit alignment. The close proximity of a pit feature [041] in Trench 38 containing Late Neolithic pottery and Site 1 a late Neolithic to Early Bronze Age enclosure may indicate a Neolithic age for the alignment. However the same could be said of the nearby presence of Kinloch Souterrain and the unenclosed settlement on the southern knoll that could suggest an Iron Age date for the alignment. Until further works are carried out that recover dateable evidence any such suggestions are speculation.

Dispersed Features, Area D to F

111. In addition to the cropmark archaeology validated during the evaluation there were a suite of additional significant archaeological features that were also revealed. These consisted of a pit [010], two postholes [041] and [049] and two linear features [050], [051] and [055]. These were uncovered in isolation with no other nearby associated features, as such may represent single events, or only survival of more extent archaeology or indicative of the presence of further archaeology that has fallen between the evaluation trenches.
112. The fill of pit [010] appears to be the burial of the contents of a fire, given the presence of charcoal and burnt bone it is most likely from a cooking fire. Feature [041] appears to be a posthole given the presence of packing stones within the secondary fill (064) which also contained sherds of Neolithic Grooved Ware pottery. Grooved Ware pottery has on many occasions found in what appears to be ceremonial contexts. This may also be the case at Kinloch however it impossible to prove given there is only one posthole.
113. Feature [049] was interpreted on site as a possible posthole or a burnt root, of which there were many on site. Given its irregular nature and form it is most likely to be burnt root rather than a posthole.
114. The linear feature [050] appears to be a terminal of a ditch that runs northwest to southeast, unfortunately no dateable material or artefacts were recovered that would help to age or discern exact purpose of the feature. As such unless further works are carried out the nature of the feature would remain uncertain.
115. Feature [055] was a curvilinear slot of uncertain age and function as with the majority of the features on site no artefacts or other datable material were recovered from the feature. The curvilinear slot may have extended out with the area of the trench but appears to have been truncated at both ends. As such it is near impossible to comment on its function, though one suggestion may be that it is the remains of a trench for a wall.

Artefacts

116. There was a general paucity in artefacts found during the evaluation. In total ten artefacts were recovered, the majority of the artefacts were from the topsoil of the evaluation trenches. These topsoil finds <01>, <03> and <05> to <10> are predominantly pottery finds that date from the medieval or later periods and are most likely the result of casual loss and discard.
117. These unstratified recoveries were mainly made from the northern fields, the ground to the south of Kinloch House. This may strengthen the argument of casual loss and discard given that Kinloch House has a 1700s origin and the settlement of Kinloch is known with

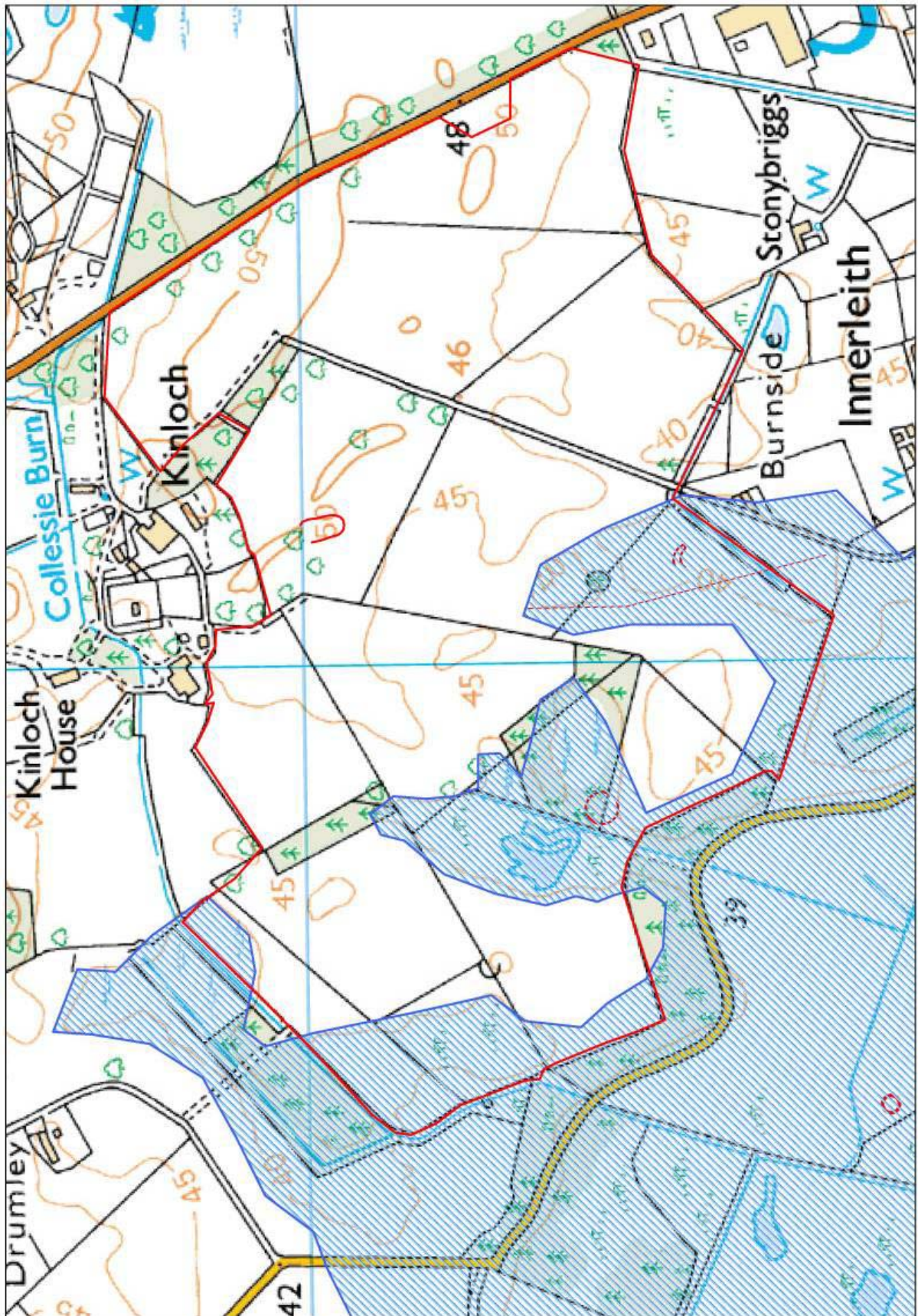


Figure 14: Possible extent of Rossie Loch as proposed by Fife Council Archaeology Unit

confidence to have existed from the sixteenth century.

118. Finds <02> and <04> were from pit feature [041] and consisted of nearly thirty sherds of pottery that are decorated with applied ridges and incised patterns. They have been identified as Grooved Ware pottery (Ann MacSween *pers comm.*) that dates to the late Neolithic, typically from 3100 to 2800 BC. As of 1999, there were over fifty sites in Scotland identified with Grooved Ware present (Cowie & MacSween 1999) although some 40% of the material recovered are uncontexted – stray finds or from stray pit features which are not elements of larger sites. Southern Scotland has traditionally had a poverty of contexted Grooved Ware, leading to a break in the distribution between English and Scottish material.
119. Two late Neolithic Grooved Ware contexted sites have started to fill this gap; these were both identified during the construction of the North West Ethylene Pipeline. At Hillend near Robertson (Armit et al 1994) a sequence of Neolithic pits containing Grooved Ware were excavated between two enclosures while at Wellbrae near Thankerton (Alexander & Armit 1992) a pit complex held comparable material. While these are distant from Fife, the Hillend material is exceptionally similar in form to that recovered from Kinloch; this pottery subtype is known as Durrington-Walls after its Wiltshire type site.
120. Within Fife, Grooved Ware pottery has been recovered from two henge sites near Glenrothes. Several hundred sherds were recovered from Balfarg Henge (Mercer 1981) that appear to have been deposited during ceremonial activity which took place during the construction of concentric circles of timber uprights. The second site was nearby at Balfarg Riding School (Barclay and Russell-White 1993) where the assemblage was estimated to be from 43 vessels.

Improvement Agriculture and Modern Truncation

121. Across the site a series of linear hollows were uncovered that were interpreted on site as furrows. Given the size, form and nature of the furrows investigated as well as the presence of white glaze pottery within many of them they would appear to be consistent with agricultural practises from the Age of Improvement (1700s) to relatively recent times.
122. The transcribed cropmarks for Site 3 (Canmore Id 30172) interpreted as furrows were identifiable as linear features where they were crossed by the evaluation trenches. They were interpreted on-site as furrows similar to those found across the rest of the site. It should be noted that the curving linear features identified as cropmarks at the southeast extent of the southern knoll were uncovered by Trench 113. However, these features when investigated did not have the characteristics of ditches of greater antiquity as suggested by their form in plan. Rather their characteristics were more in common with cultivation remains and they were interpreted as being furrows (038) and plough marks.
123. The whole of the study area has clearly been improved through intensive ploughing; this was evidenced in part through extensive plough scars. The resultant homogenisation of the topsoil and the truncation of the upper surface of the underlying subsoil were evident in part through the very shallow character of the significant archaeological features.

Rossie Loch

124. The presence of organic black silty sand (044) within some of the trenches was interpreted on site as being lacustrine silt deposits from the edge of the Rossie Loch. The deposit most likely represents the deposition of plant material that either grew at the edge of the Loch and/or material that had fallen into the water. The presence of this material within the evaluation study area suggests that the maximum extent of Rossie Loch at some points in the past has extended further or rather higher than the 39m OD contour (the guide used to exclude areas from study). This discovery has validated the exclusion of the ground lower than 39m OD.
125. A map of the suggested maximum extent of Rossie Loch, produced by Fife Council Archaeological Unit during the period of this project but without access to trench information (see Figure 14) would appear to correlate well with this interpretation as the

edges of their mapped extent correspond neatly with the presence of subsoil (044).

126. The impact of a more extensive loch, which could have had a seasonal component to this larger extent, creates a very different landscape to that perceivable today. The southern knoll (Area A) has the potential to become either accessed by a thin peninsula or even to be isolated. The western ground would also have been (Area E and F) another broad peninsula while the general area (Areas D to F) would have all been bordering on the loch.
127. The transformation of this ground to historic loch edge locations would have given a much more diverse set of ecological environments, and hence resources, that could have been exploited. The southern knoll would have acquired a defensible character while the pit alignment (Area C) would have been lochside.

Recommendations

128. Presented below are our provisional recommendations for archaeological mitigation in the event of the potential extraction proceeding. These recommendations are framed to support and inform the iterative design process for the extraction proposal.
129. The appropriateness and acceptability of our recommendations rest with Fife Council. Confirmation that the below recommendations are acceptable should be received from the council prior to the implementation of any extraction works whose appropriateness may rely on these recommendations.
130. The study area is a mixture of areas devoid of identifiable significant archaeology, inimical to historic use and areas of significant archaeology. Our recommendations are framed to reflect this mixture through the recognition of a series of Areas (see Figure 13) that are used to differentiate response. While the whole of the study area is within the Howe of Fife Area of Archaeological Regional Importance this differentiation is reasonable in the context of the level of information now available for the study area.

Area A

131. This area includes a Scheduled Monument and significant features potentially relating to unenclosed settlement from the Iron Age to Pictish period on a knoll that may have been partly isolated by the historic Rossie Loch.
132. We recommend that the extraction proposal should exclude the southern knoll leaving this ground unaltered and under a non-destructive agricultural regime. This regime would preferably be pasture or if arable under a ploughing regime that does not deepen ploughing depth nor plant root crops.
133. This approach would ensure the protection of the Scheduled Monument, the provision of an appropriate setting for this monument and protection for this significant (if damaged) unenclosed settlement.
134. The case for the protection of the lower slopes of the knoll is less certain and limited loss of these lower slopes is not desired but is unlikely to compromise either the identified significant archaeology or the setting of the Scheduled Monument. Should this be included in the extraction design then we recommend a programme of archaeological works should be implemented to ensure the managed recovery of this significant material prior to loss.

Area B

135. This area is the portion of ground closest to the Neolithic Enclosure that was investigated in the 1980s before substantially being destroyed by the gas main infrastructure to the east of the study area. No significant archaeology was located in this area.
136. We recommend on a pre-cautionary basis that should this ground be extracted then a programme of archaeological works should be implemented to ensure the managed recovery of any significant material prior to loss.
137. The programme of archaeological works should take the character of archaeological

monitoring of the initial topsoil strip of this ground. We further recommend that the monitored strip for this relatively small area should be undertaken as a single exercise.

Area C

138. This area covers the pit alignment which arcs through this ground and which the evaluation showed the individual pits to be severely truncated and devoid of artefacts.
139. We recommend that the quality of this archaeological feature is insufficient to warrant protection and hence we recommend that should this ground be extracted then a programme of archaeological works should be implemented to ensure the managed recovery of any significant material prior to loss.
140. Given that this area covers a coherent archaeological site, we recommend that the programme of archaeological works should take the character of a strip, map and sample exercise across this ground. This should be undertaken as a single exercise that seeks to record the full extent of this site and excavate a representative sample of the pits that comprise it.

Areas D to F

141. Within this extended ridge of ground the evaluation identified a low density dispersed spread of isolated but potentially significant archaeological features.
142. We recommend that should this ground be extracted then a programme of archaeological works should be implemented to ensure the managed recovery of this significant material prior to loss.
143. The programme of archaeological works should take the character of archaeological monitoring of the initial topsoil strip of this ground. We further recommend that this monitored strip should be undertaken in clear and coherent blocks that enable substantial areas to be cleared in advance of the extraction process needed access.

Standards and post-excavation stages

144. All archaeological works should be agreed with Fife Council Archaeological Unit through a comprehensive Written Scheme of Investigation. The scope and standards of the works defined within this document should conform with the guidelines of the Institute for Archaeologists. This will encompass post-excavation analysis of the recovered materials and academic publication.
145. We recommend that given the likely long duration of the extraction process that post-excavation analyses are progressed during the extraction process and not paused until the end of the extraction. Where publication can be progressed in a coherent manner during the course of the extraction, we also recommend that this is undertaken.

Scope for enhancement

146. Assuming the adoption of the above recommendations, there is some scope for the enhancement of the retained / protected archaeological resource:
 - ❖ to improve the physical protection of the significant archaeological features on the southern knoll we recommend the clear felling of the portion of the plantation on the knoll if this ground is moved to pasture; and
 - ❖ any move to impede drainage or introduce water features to the west, south or south-east of the southern knoll will restore some interpretable aspect of the historic character of this portion of Rossie Loch.
147. These options for enhancement, should they be deliverable within the design of the extraction proposal, would assist in offsetting any adverse impacts.

Conclusion

148. A programme of archaeological evaluation works was carried out for Dalgleish Associates on behalf of Laird Aggregates Ltd to inform the development a proposal for mineral extraction on land to the south of Kinloch House, Collessie, Fife.
149. The evaluation confirmed the presence of significant archaeological sites first identified from aerial photography within the proposed extraction area. The archaeological sites included an unenclosed settlement that may stretch from the Iron Age to the Pictish period on a knoll that would have been a peninsula into the drained Rossie Loch. This settlement includes a scheduled souterrain, evidence for post build structures and sunken structures with paved floors. Further north was a severely truncated pit alignment of uncertain, but probably prehistoric, origin. A number of dispersed pits or post-holes were also located, one of which contained numerous sherds of a Neolithic Grooved Ware pottery vessel.
150. The findings of the evaluation have been used to inform a series of recommendations regarding the treatment of these sites within the design process for the proposed extraction.

References

Documentary

- Alexander, D & Armit, I, 1992, *Excavations at Wellbrae (parcel 249), Strathclyde Region July-August 1991, North Western Ethylene Pipeline 2 Report no 16*. unpublished commercial document
- Alexander, D and Rees, A, 1997, 'Red Castle'. *Discovery Excav Scot* 1998, 15
- Armit, I et al, 1994, 'Excavations of pits containing Grooved Ware at Hillend, Clydesdale District, Strathclyde Region' *Proc Soc Antiq Scot* 124 (Edinburgh)
- Barber, J, 1982, 'The investigation of some plough truncated features at Kinloch Farm, Collessie in Fife', *Proc Soc Antiq Scot*, vol.112 P524-533
- Barclay, G, 1980, 'Newmill and the 'souterrains of southern Pictland''. In Watkins, T, 1980. 'Excavation of a Settlement and souterrain at Newmill, near Bankfoot, Perthshire'. *Proc Soc Antiq Scot* 110 165-208
- Barclay, GJ, & Russel-White, CJ, 1993, 'Excavations in the ceremonial complex of the fourth to second millienium BC at Balfarg/Balbirnie, Glenrothes, Fife' *Proc Soc Antiq Scot* 123 (Edinburgh)
- Carter, S, 1996, 'A radiocarbon dated pit alignment at North Straiton, near Leuchars, Fife' *Tayside and Fife Archaeological Journal* Vol2
- Cowie & MacSween, 1999, 'Grooved Ware from Scotland: A Review' in *Grooved Ware in Britain and Ireland; Neolithic Studies Group Seminar Papers 3*, Oxbow Books, Oxford.
- Gordon, D, 2010, *Kinloch House, Collessie: Archaeological Evaluation*. Method Statement, unpublished commercial report by Rathmell Archaeological Limited
- LeLong, O & MacGregor, G, 2007, *The Lands of Ancient Lothian: Interpreting the archaeology of the A1* (Edinburgh).
- MacFarlane, J. Rev., 1834-45 'Parish of Collessie, County of Fife' *New Statistical Accounts* Vol. 9, 21-37
- Mercer, RJ, 1981, 'The excavation of a late Neolithic henge-type enclosure at Balfarg, Markinch, Fife, Scotland' *Proc Soc Antiq Scot* 111 (Edinburgh)
- Millar, AH, 1895, *Fife: pictorial and historical: its people, burghs, castles and mansions'*, Vol 1 244
- Sibbald, Sir R., 1710, *A History Ancient and Modern of the Sheriffdoms of Fife and Kinross*. Cupar 1803 ed..
- Smith, A., 1952, 'Parish of Collessie, County of Fife', *3rd Statistical Account* 698-703.
- Speak, S & Burgess, C, 1999 'Meldon Bridge: a centre of the third millienium BC in Peeblesshire' *PSAS* 129 1-118
- Taylor, S, 2002, 'Place-names and the Hidden Landscape' *Scottish Local History* 56
- Wainwright, F.T, 1963, *The Souterrains of Southern Pictland* Routledge and Kegan Paul, (London)
- Walker, A. Rev., 1791-99, 'Parish of Collessie, (County of Fife)'. *Old Statistical Account*, Vol. 2, 416-419.
- Watkins, T, 1980, 'Excavation of a Settlement and souterrain at Newmill, near Bankfoot, Perthshire'. *Proc Soc Antiq Scot* 110 Edinburgh

Cartographic

1684	Adair	The East part of Fife
1747-1755	Roy	Military Survey of Scotland 18/2d, 18/2e, 18/1a and 18/1b
1775	Ainslie, John	Counties of Fife and Kinross with the Rivers Forth and Tay
1827	Sharp, Greenwood & Fowler	Map of the counties of Fife and Kinross
1855	Ordnance Survey	1 st edition Ordnance Survey, Fife
1893	Ordnance Survey	2 nd edition Ordnance Survey, Fife
1919	Ordnance Survey	3 rd edition Ordnance Survey, Fife

Appendix 1: Registers

Within this appendix are all registers pertaining to the intrusive evaluation works.

Trench Summaries

Trench	Orientation	Size	Topsoil Depth	Subsoil Character	Modern Features	Significant Features	Artefacts
01	East-West	52 x 2m 104m ²	400m	Orange brown sand and gravel (002), Dark brown sand and gravel (003) and Yellow Brown sand and gravel (004).	None	None	None
02	Northwest-Southeast	100 x 2m 200m ²	450-1000mm	Orange brown sand and gravel (002), Dark brown sand and gravel (003)	None	None	None
03	Northeast-Southwest	96 x 2m 192m ²	330-655mm	Orange brown sand and gravel (002), Dark brown sand and gravel (003)	None	None	None
04	East Northeast-West Southwest	110.1 x 2m 220.2m ²	200-730mm	Orange brown sand and gravel (002), Dark brown sand and gravel (003)	None	None	None
05	Northwest-Southeast	102.6 x 2m 205.2m ²	240-640mm	Yellow Brown sand and gravel (004).	None	None	None
06	South-North	109.8 x 2m 219.6m ²	300-460mm	Yellow Brown sand and gravel (004).	None	None	None
07	Southwest-Northeast	85 x 2m 170m ²	300-580mm	Orange brown sand and gravel (002), Dark brown sand and gravel (003)	None	None	None
08	East-West	104 x 2m 208m ²	300-550mm	Orange brown sand and gravel (002), Dark brown sand and gravel (003) and Yellow Brown	None	None	None

				sand and gravel (004).			
09	East-West	100 x 2m 200m ²	260- 570mm	Orange brown sand and gravel (002), Dark brown sand and gravel (003)	None	None	None
10	South Southwest- North Northeast	100 x 2m 200m ²	500- 900mm	Orange brown sand and gravel (002), Dark brown sand and gravel (003)	None	None	None
11	Northwest- Southeast	109 x 2m 218m ²	400- 580mm	Orange brown sand and gravel (002), Dark brown sand and gravel (003)	None	None	None
12	East-West	48 x 2m 96m ²	350- 480mm	Orange brown sand and gravel (002), Dark brown sand and gravel (003)	None	None	None
13	Northwest- Southeast	102 x 2m 204m ²	400- 840mm	Orange brown sand and gravel (002), Dark brown sand and gravel (003)	None	None	None
14	Northeast- Southwest	100 x 2m 200m ²	280- 680mm	Orange brown sand and gravel (002), Dark brown sand and gravel (003)	None	None	None
15	Southeast- Northwest	101.7 x 2m 203.4m ²	300- 320mm	Orange brown sand and gravel (002), Dark brown sand and gravel (003)	None	None	None
16	North-South	100.9 x 2m 201.8m ²	280- 400mm	Orange brown sand and gravel (002), Dark brown sand and gravel (003), Brown orange sand (005)	Furrow (006) at +42.5m	None	None
17	Northeast- Southwest	102.3 x 2m 204.6m ²	200- 430mm	Orange brown sand and gravel (002), Dark brown sand and gravel (003), Brown orange sand (005)	None	None	None
18	Northwest- Southeast	101.7 x 2m	250- 360mm	Orange brown sand and gravel (002)	Hedgerow (007)	None	None

		203.4m ²					
19	West-East	103.4 x 2m 206.8m ²	310-430mm	Orange brown sand and gravel (002), Brown orange sand (005)	None	None	None
20	Northwest-Southeast	103.4 x 2m 206.8m ²	270-350mm	Orange brown sand and gravel (002), Dark brown sand and gravel (003)	None	None	1 Sherd of Green Glaze Pottery <01>
21	Southeast-Northwest	100.2 x 2m 200.4m ²	250-300mm	Orange brown sand and gravel (002), Dark brown sand and gravel (003), Brown orange sand (005)	None	None	None
22	East to West	100.1 x 2m 200.2m ²	290-380mm	Orange brown sand and gravel (002), Dark brown sand and gravel (003)	None	None	None
23	Northeast-Southwest	101.1 x 2m 202.2m ²	280-420mm	Orange brown sand and gravel (002), Brown orange sand (005)	Possible agricultural ditch/furrow (008)	None	None
24	East-West	98 x 2m 196m ²	280mm	Orange brown sand and gravel (002), Dark brown sand and gravel (003), Brown orange sand (005)	None	None	None
25	East-West	107 x 2m 214m ²	370-490mm	Orange brown sand and gravel (002), Dark brown sand and gravel (003),	None	Pit [010]	None
26	Southeast-Northwest	109 x 2m 218m ²	400-1100mm	Orange brown sand and gravel (002)	Furrows [045] aligned Northeast-Southwest at +89.5m	None	None
27	East-West	100.5 x 2m 201m ²	500-900mm	Orange brown sand and gravel (002), Dark brown sand and gravel (003)	Furrows [045] aligned North-South at +83m	None	None

28	Northwest-Southeast	101.4 x 2m 202.8m ²	790-830mm	Orange brown sand and gravel (002)	Furrows [045] aligned Northeast-Southwest at +56.8m	None	None
29	Southeast-Northwest	100.3 x 2m 200.6m ²	500-900mm	Orange brown sand and gravel (002)	None	None	None
30	Southeast-Northwest	101 x 2m 202m ²	470-1250mm	Orange brown sand and gravel (002)	None	Pits [068], [069] +74.5m, +76.3m	None
31	Southeast-Northwest	101.2 x 2m 202.4m ²	550-1300mm	Orange brown sand and gravel (002)	None	None	None
32	Northeast-Southwest	100.3 x 2m 200.6m ²	350-1050mm	Orange brown sand and gravel (002)	None	None	None
33	South Southeast-North Northwest	102 x 2m 204m ²	350-850mm	Orange brown sand and gravel (002)	None	None	None
34	Northeast-Southwest	101.1 x 2m 202.2m ²	470-1000mm	Orange brown sand and gravel (002), Dark brown sand and gravel (003)	None	None	None
35	East Southeast-West Northwest	100.6 x 2m 201.2m ²	530-1200mm	Orange brown sand and gravel (002), Dark brown sand and gravel (003),	None	None	None
36	West-East	100.5 x 2m 201m ²	500-1060mm	Orange brown sand and gravel (002),	Furrow [045] aligned North-South at +73.2m	None	None
37	West-East	102.5 x 2m	450-1050mm	Orange brown sand and gravel (002),	None	None	None

		205m ²					
38	South-North	104.1 x 2m 208.1m ²	520-800mm	Orange brown sand and gravel (002),	None	Pit [041] at +46.2m	Prehistoric pottery <02>, <04>
39	Northwest-Southeast	102 x 2m 204m ²	560-1500mm	Orange brown sand and gravel (002)	None	None	None
40	Southeast-Northwest	100.8 x 2m 201.6m ²	560-1000mm	Orange brown sand and gravel (002)	None	None	None
41	Northwest-Southeast	103.5 x 2m 207m ²	750-1300mm	Orange brown sand and gravel (002)	None	None	None
42	East-West	95 x 2m 190m ²	300-1300mm	Orange brown sand and gravel (002)	None	None	None
43	Southeast-Northwest	100 x 2m 200m ²	500-720mm	Orange brown sand and gravel (002),	Furrow [045] aligned Northeast-Southwest at +19m	None	None
44	East-West	98.9 x 2m 197.8m ²	420-880mm	Orange brown sand and gravel (002), Dark brown sand and gravel (003),	Furrow [045] aligned Northwest-Southeast at +19m	Pit [059] at +14m	None
45	North-South	102.3 x 2m 204.6m ²	450-1000mm	Orange brown sand and gravel (002), Dark brown sand and gravel (003),	None	None	None
46	North-South	102.2 x 2m 204.4m ²	300-540mm	Orange brown sand and gravel (002),	Modern Service [054] aligned Northwest-southeast at +20.4m. Furrows [056], [057] aligned East Northeast-West Southwest at +84m, +92.4m	None	None

47	Southeast-Northwest	100 x 2m 200m ²	680-900mm	Orange brown sand and gravel (002), Dark brown sand and gravel (003), Light Pink Sand (014)	None	None	None
48	Northwest-Southeast	99 x 2m 198m ²	280-940mm	Orange brown sand and gravel (002),	Furrow [045] aligned Northeast-Southwest at +1.2m, +9.5m, +45.8m. Modern pipe aligned Northeast-Southwest at +17.5m	None	None
49	West-East	101.5 x 2m 203m ²	370-750mm	Orange brown sand and gravel (002), Dark brown sand and gravel (003), Light grey sand (015),	None	None	None
50	South-North	102.7 x 2m 205.4m ²	400-1100mm	Orange brown sand and gravel (002), Brown orange sand (005),	None	None	None
51	North-South	102 x 2m 204.4m ²	400-1250mm	Orange brown sand and gravel (002),	None	Curvilinear [055] at +41.8m	None
52	West-East	100 x 2m 200m ²	300-720mm	Orange brown sand and gravel (002), Brown orange sand (005), Light grey sand (015), Light red grey sand (048)	None	None	None
53	Southeast-Northwest	101.8 x 2m 203.6m ²	300-1000mm	Orange brown sand and gravel (002), Dark brown sand and gravel (003),	None	None	None
54	South-North	102.5 x 2m 205m ²	400-1100mm	Orange brown sand and gravel (002), Dark brown sand and gravel (003)	None	None	None
55	Northwest-Southeast	101.8 x 2m 203.6m ²	400-800mm	Orange brown sand and gravel (002), Dark brown sand and gravel (003)	None	None	None

56	East-West	101.7 x 2m 203.4m ²	300-1010mm	Orange brown sand and gravel (002), Dark brown sand and gravel (003),	None	None	None
57	West-East	100 x 2m 200m ²	330-500mm	Orange brown sand and gravel (002), Dark brown sand and gravel (003),	None	None	Iron Nail <02>
58	North-South	102 x 2m 204m ²	320-400mm	Orange brown sand and gravel (002), Light grey sand (015),	None	None	None
59	Southeast-Northwest	100 x 2m 200m ²	320-400mm	Orange brown sand and gravel (002), Dark brown sand and gravel (003), Light Pink Sand (014), Light grey sand (015),	None	None	None
60	Southeast-Northwest	100.4 x 2m 200.8m ²	300-340mm	Light grey sand (015),	None	None	None
61	South-North	51 x 2m 102m ²	320-400mm	Orange brown sand and gravel (002)	None	None	None
62	West-East	102.5 x 2m 205m ²	320-400mm	Orange brown sand and gravel (002)	None	None	None
63	East-West	100.1 x 2m 200.2m ²	300-350mm	Brown orange sand (005), Light grey sand (015)	None	None	None
64	West Southwest-East Northeast	84.6 x 2m 169.2m ²	300-360mm	Orange brown sand and gravel (002), Light grey sand (015), Light red grey sand (048)	None	None	None
65	North-South	100.5 x 2m 201m ²	350-480mm	Brown orange sand (005), Light grey sand (015), Very dark brown humic silty sand [044]	Furrows [045] aligned Northwest-Southeast at +73.8m and +41.2m	None	None
66	East-West	100.1 x	320-	Orange brown sand and gravel	Furrows [045] aligned	None	None

		2m 200.2m ²	590mm	(002),	Northwest-Southeast at +12.8m, +45m and +92.2m		
67	North-South	100.3x 2m 200.6m ²	310- 520mm	Brown orange sand (005),	None	None	None
68	Northwest- Southeast	95.6 x 2m 191.2m ²	330- 640mm	Brown orange sand (005),	None	None	None
69	Southeast- Northwest	100 x 2m 200m ²	290- 350mm	Orange brown sand and gravel (002),	None	None	None
70	South-North	50.5 x 2m 101m ²	320- 400mm	Orange brown sand and gravel (002), Brown orange sand (005), Light red grey sand	None	None	None
71	Southwest- Northeast	100 x 2m 200m ²	320- 470mm	Light grey sand (015),	None	None	None
72	South Southeast- North Northwest	96 x 2m 192m ²	300- 420mm	Brown orange sand (005), Light red grey sand (048)	None	Ditch [051] aligned Northeast- Southwest at +61.2m	None
73	South-North	100.3 x 2m 200.6m ²	200- 420mm	Yellow Brown sand and gravel (004), Light grey sand (015),	None	Ditch [051a] and [052] aligned Northeast- Southwest at +70m and +77.6m	None
74	North Northeast- South Southwest	100.1 x 2m 200.2m ²	330- 400mm	Light grey sand (015),	None	None	None

75	East-West	104.2 x 2m 208.4m ²	350-750mm	Light grey sand (015)	None	None	None
76	Northwest-Southeast	101.9 x 2m 203.8m ²	350-480mm	Brown orange sand (005), Light Pink Sand (014), Light grey sand (015)	None	None	None
77	South-North	103.2 x 2m 206.4m ²	320-700mm	Orange brown sand and gravel (002), , Brown orange sand (005), Light Pink Sand (014), Very dark brown humic silty sand [044]	None	None	None
78	Northeast-Southwest	104 x 2m 208m ²	370-590mm	Dark brown sand and gravel (003), Brown orange sand (005), Light Pink Sand (014), Light grey sand (015), Light red grey sand (048)	Plough Scars	None	None
79	Northeast-Southwest	97.6 x 2m 195.2m ²	330-810mm	Orange brown sand and gravel (002), Dark brown sand and gravel (003), Brown orange sand (005), Light grey sand (015), Very dark brown humic silty sand [044]	None	None	None
80	Southwest-Northeast	97.6 x 2m 195.2m ²	240-320mm	Dark brown sand and gravel (003), Light grey sand (015), Light red grey sand (048)	None	None	None
81	West-East	99.1 x 2m 198.2m ²	300-360mm	Orange brown sand and gravel (002), Dark brown sand and gravel (003), Brown orange sand (005)	None	None	None
82	Southwest-Northeast	100 x 2m 200m ²	240-420mm	Orange brown sand and gravel (002), Brown orange sand (005), Light grey sand (015), Light red grey sand [048]	None	None	None
83	Northeast-	50.3 x	230-	Orange brown sand and gravel	None	None	None

	Southwest	2m 100.6m ²	410mm	(002), Brown orange sand (005)			
84	North-South	99 x 2m 198m ²	290-370mm	Orange brown sand and gravel (002), Dark brown sand and gravel (003), Brown orange sand (005)	None	Possible Posthole/bioturbation [049] at +75.5	None
85	Northwest-Southeast	49.6 x 2m 99.2m ²	370mm	Orange brown sand and gravel (002), Dark brown sand and gravel (003), Brown orange sand (005)	None	None	None
86	East Southeast-West Northwest	102 x 2m 204m ²	260-420mm	Orange brown sand and gravel (002), Brown orange sand (005), Light Pink Sand (014), Light grey sand (015), Light red grey sand [048]	Plough Scar	None	None
87	West-East	50.1 x 2m 100.2m ²	280-350mm	Orange brown sand and gravel (002), Dark brown sand and gravel (003), Brown orange sand (005)	None	None	None
88	West Southwest-East Northeast	56 x 2m 112m ²	280-390mm	Orange brown sand and gravel (002), Dark brown sand and gravel (003), Very dark brown humic silty sand [044] Light red grey sand [048]	None	None	None
89	Southwest-Northeast	101.6 x 2m 203.2m ²	320-630mm	Orange brown sand and gravel (002), Dark brown sand and gravel (003),	None	Possible Ditch Terminal [050] +36.4m	None
90	Southeast-Northwest	50.9 x 2m 101.8m ²	400-600mm	Orange brown sand and gravel (002), Brown orange sand (005) Light Pink Sand (014),	None	None	None
91	Northeast-Southwest	50.1 x 2m 100.2m ²	320-510mm	Brown orange sand (005), Yellow Brown sand and gravel (004).	None	None	None

92	West-East	101.8 x 2m 203.6m ²	280-450mm	Orange brown sand and gravel (002), Dark brown sand and gravel (003), Brown orange sand (005)	Plough Scar	None	None
93	West-East	50.4 x 2m 100.8m ²	290-530mm	Orange brown sand and gravel (002), Dark brown sand and gravel (003)	None	None	None
94	West-East	98.4 x 2m 196.8m ²	360-530mm	Orange brown sand and gravel (002), Dark brown sand and gravel (003)	Furrow [045] aligned North-South at +58.8m	None	None
95	East Southeast- West Northwest	99.6 x 2m 199.2m ²	280-640mm	Orange brown sand and gravel (002), Dark brown sand and gravel (003), Light grey sand (015),	None	None	None
96	North Northeast- South Southwest	48.9 x 2m 97.8m ²	270-290mm	Orange brown sand and gravel (002), Dark brown sand and gravel (003),	None	None	None
97	Southwest- Northeast	101.2 x 2m 202.4m ²	260-440mm	Orange brown sand and gravel (002), Dark brown sand and gravel (003),	Furrow [045] aligned Northwest-Southeast +58.2m	None	None
98	South Southwest- North Northeast	48.9 x 2m 97.8m ²	300-410mm	Orange brown sand and gravel (002), Dark brown sand and gravel (003)	None	None	None
99	North Northeast- South Southwest	98.9 x 2m 197.8m ²	330-550mm	Orange brown sand and gravel (002), Dark brown sand and gravel (003), Light Pink Sand (014),	Furrows [045] aligned West Northwest-East Southeast at +44m	None	None
100	East-West	103 x 2m 206m ²	300-370mm	Orange brown sand and gravel (002), Dark brown sand and gravel (003), Light Pink Sand (014)	Furrow [045] aligned North-South at +6m, +23.4m, +34m,	None	None

101	Northwest-Southeast	103.3 x 2m 206.6m ²	300-560mm	Orange brown sand and gravel (002), Dark brown sand and gravel (003), Light grey sand (015), Very dark brown humic silty sand [044]	Furrows [045] aligned Northwest-Southeast at +25.5m	None	None
102	East-West	52 x 2m 104m ²	300-510mm	Orange brown sand and gravel (002), Dark brown sand and gravel (003), Light Pink Sand (014), Light grey sand (015)	None	None	None
103	North Northwest-South Southeast	53.2 x 2m 106.4m ²	330-496mm	Orange brown sand and gravel (002), Dark brown sand and gravel (003), Light Pink Sand (014), Light grey sand (015)	Plough Scars	None	None
104	North Northwest-South Southeast	99.4 x 2m 198.8m ²	330-640mm	Orange brown sand and gravel (002), Dark brown sand and gravel (003),	Plough Scars	None	None
105	South-North	46.3 x 2m 92.6m ²	290-990mm	Orange brown sand and gravel (002), Dark brown sand and gravel (003), Light Pink Sand (014),	None	None	None
106	West Northwest-East Southeast	100.7 x 2m 201.4m ²	280-470mm	Orange brown sand and gravel (002), Dark brown sand and gravel (003), Light Pink Sand (014),	None	Circular features (017), (018), (020) at +39.4m, +77.6m, +89.8m	None
107	Southeast-Northwest	100.1 x 2m 200.2m ²	420-840mm	Orange brown sand and gravel (002), Dark brown sand and gravel (003), Light Pink Sand (014),	Linear [024] at +28.6m, Ditch [026] at +30.8m, Ditch [028] at +33m, Linear [029] at +46.7m, Linear [030] at +54m	Linear [021] at +15.7m, Pit [022] at +24.3m, Pit [023] at +25.2m, Pit [025] at +30m, , Posthole [027] +31.8m, , Posthole [031]	None

						at +97.7m	
108	North-South	53.2 x 2m 106.4m ²	580-1090mm	Orange brown sand and gravel (002), Light Pink Sand (014),	None	Posthole [032] at +3.2m, Ditch [033] +39.2m	None
109	West-East	103.6 x 2m 207.2m ²	260mm-1000mm	Orange brown sand and gravel (002), Light Pink Sand (014)	Furrows [034], [035], [036] [037] at +33m, +50.4m, +59.1m, +71.9m respectively aligned Northeast to Southwest	Ditch [039] at +95.2m	None
110	Southeast-Northwest	50 x 2m 100m ²	600-1000mm	Orange brown sand and gravel (002),	None	None	None
111	West-East	51.2 x 2m 102.4m ²	300-830mm	Orange brown sand and gravel (002), Dark brown sand and gravel (003),	None	None	None
112	North Northwest-South Southeast	101.2 x 2m 202.4m ²	260-450mm	Orange brown sand and gravel (002), Dark brown sand and gravel (003), Light grey sand (015)	Furrows [038] aligned Northeast-Southwest at +5.2m, +14.3m. and East-West at +65.7m	None	None
113	Northwest-Southeast	101.4 x 2m 202.8m ²	280-370mm	Orange brown sand and gravel (002), Dark brown sand and gravel (003), Brown orange sand (005), Light Pink Sand (014)	Furrows [038] aligned Northeast-Southwest at +5.3m, +15.6m, +26.9m, +37.1m, +70.6m,	None	None
114	East Southeast-West Northwest	104.9 x 2m 202.8m ²	230-460mm	Orange brown sand and gravel (002), Dark brown sand and gravel (003)	Furrows [038] aligned Northeast-Southwest at +22.4m, +51.7m, +88.8m	None	None
115	West-East	103.8 x 2m 207.6m ²	360-500mm	Orange brown sand and gravel (002), Dark brown sand and gravel (003), Light grey sand (015)	Furrows [039] and [040] aligned Northeast-Southwest at +30m, +74m	None	None
116	East Northeast-West	53 x 2m	460-690mm	Dark brown sand and gravel (003), Light grey sand (015)	None	None	None

	Southwest	106m ²					
117	Southwest-Northeast	100.1 x 2m 200.2m ²	200-700mm	Orange brown sand and gravel (002), Dark brown sand and gravel (003)	None	Stone Surface [042] +35.2m, Stone Surface [043] +85.5m	None
118	North Northwest-South Southeast	76.2 x 2m 152.4m ²	320-420mm	Orange brown sand and gravel (002)	Plough Scars	None	None
119	South-North	101 x 2m 202m ²	260-430mm	Orange brown sand and gravel (002), Dark brown sand and gravel (003)	Furrow [045] aligned West Southwest-East Northeast at +37m	None	None
120	Northwest-Southeast	22.5 x 2m 45m ²	340-490mm	Light pink sand (014), Very dark brown humic silty sand [044]	None	None	None
121	West-East	23 x 2m 90m ²	270mm	Dark brown sand and gravel (003), Light pink sand (014)	None	None	None
122	Southwest-Northeast	29.6 x 2m 59.2m ²	390mm	Dark brown sand and gravel (003), Light pink sand (014), Very dark brown humic silty sand [044]	Furrow [045] aligned Northwest-Southeast at +7.9m	None	None
123	North Northeast-South Southwest	50.5 x 2m 101m ²	300-430mm	Orange brown sand and gravel (002), Dark brown sand and gravel (003), Light Pink Sand (014),	None	None	None
124	West-East	101 x 2m 202m ²	290-460mm	Orange brown sand and gravel (002)	Furrows (045) aligned North-South at +3.1m, +11.1m, +20m, +26.1m, +32.8m, +43.3m, +64.8m, +81.6m, +95.6m	None	None
125	West-East	101 x 2m 202m ²	260-460mm	Orange brown sand and gravel (002), Dark brown sand and gravel (003),	Furrows (045) aligned North-South at +8m, +16.8m, +27.2m, +35.6m, +41.1m, +54.5m, +68.6m,	None	None

					+83.7m,		
126	East-West	66.3 x 2m 132.6m ²	340-420mm	Orange brown sand and gravel (002), Dark brown sand and gravel (003),	Furrows (045) aligned North-South at +20.9m,	None	None
127	West-East	100 x 2m 200m ²	240-720mm	Orange brown sand and gravel (002), Light Pink Sand (014)	Furrows (045) aligned North-South at +3.2m, +29.6m	None	None
128	North-South	93.6 x 2m 187.2m ²	310-560mm	Orange brown sand and gravel (002), Dark brown sand and gravel (003),	Furrows (045) aligned West Northwest-East Southeast at +65.8m	None	None
129	Northeast-Southwest	101 x 2m 202m ²	250-480mm	Orange brown sand and gravel (002), Dark brown sand and gravel (003),	None	None	None
130	Southwest-Northeast	49.6 x 2m 99.2m ²	280-520mm	Orange brown sand and gravel (002), Dark brown sand and gravel (003),	Furrows [047], [045] aligned North-South at +19m, +30.4m, +40.4m	Pits [065], [066], [067] within TR130 extension between +1.1-6.3m	None
131	Northeast-Southwest	72.4 x 2m 144.8m ²	270-360mm	Dark brown sand and gravel (003), Light grey sand (015), very dark brown humic silty sand [044]	Furrows [045] aligned Northwest-Southeast at +4.3m, +10.6m, +22m, +30.7m,	None	None
132	West Southwest-East Northeast	100.1 x 2m 200.2m ²	230-460mm	Dark brown sand and gravel (003), Light grey sand (015), very dark brown humic silty sand [044]	Furrows [045] aligned North-South, +1.3m, +21.7m, +29.5m, +38.9m, +84m	None	None
133	East-West	90.5 x 2m 181m ²	240-490mm	Dark brown sand and gravel (003), Light grey sand (015), very dark brown humic silty sand [044]	Furrow [045] aligned North-South at +34m	None	None
134	North-South	100.6 x 2m	220-530mm	Orange brown sand and gravel (002), Dark brown sand and gravel (003), Very dark brown	None	None	None

		201.2m ²		humic silty sand [044]			
135	Southwest-Northeast	100 x 2m 200m ²	270-720mm	Orange brown sand and gravel (002), Dark brown sand and gravel (003),	None	None	None
136	East-West	99.1 x 2m 198.2m ²	230-580mm	Orange brown sand and gravel (002), Dark brown sand and gravel (003)	None	None	None
137	Northeast-Southwest	100 x 2m 200m ²	260-460mm	Orange brown sand and gravel (002), Dark brown sand and gravel (003)	None	None	None
138	Southwest-Northeast	102.1 x 2m 204.2m ²	320-330mm	Orange brown sand and gravel (002), Dark brown sand and gravel (003), Very dark brown humic silty sand [044]	None	None	None
139	North Northeast-South Southwest	98.2 x 2m 196.4 m ²	320-420mm	Orange brown sand and gravel (002), Dark brown sand and gravel (003),	None	None	None
140	South Southwest-North Northeast	101.5 x 2m 203m ²	270-400mm	Orange brown sand and gravel (002), Dark brown sand and gravel (003),	None	None	None
141	North-South	102.8 x 2m 205.6m ²	290-360mm	Orange brown sand and gravel (002), Dark brown sand and gravel (003), Light pink sand (014)	None	None	None
142	Northwest-Southeast	101.7 x 2m 203.4m ²	340-400mm	Dark brown sand and gravel (003),	None	None	None
143	Northeast-Southwest	51.5 x 2m 103m ²	300-380mm	Orange brown sand and gravel (002), Light pink sand (014)	None	None	None

144	Southwest-Northeast	100.5 x 2m 101m ²	340-400mm	Orange brown sand and gravel (002), Dark brown sand and gravel (003), Light pink sand (014),	Furrows (045) aligned Northwest-Southeast	None	None
145	West-East	99.5 x 2m 199m ²	300-420mm	Orange brown sand and gravel (002), Dark brown sand and gravel (003),	None	None	None
146	Southwest-Northeast	100.8 x 2m 201.6m ²	240-380mm	Orange brown sand and gravel (002), Light pink sand (014)	None	None	None
147	North-South	52.3 x 2m 104.6m ²	280-380mm	Orange brown sand and gravel (002), Grey Orange sand (013)	Ploughscars	None	None
148	South-North	100 x 2m 200 m ²	290-320mm	Orange brown sand and gravel (002)	Ploughscars	None	None
149	North-South	100.6 x 2m 201.2m ²	280-480mm	Dark brown sand and gravel (003),	None	None	None
150	Southwest-Northeast	50 x 2m 100m ²	400-460mm	Orange brown sand and gravel (002), Dark brown sand and gravel (003), Grey Orange sand (013)	None	None	None
151	Southwest-Northeast	103 x 2m 206m ²	370-400mm	Orange brown sand and gravel (002), Dark brown sand and gravel (003), Grey Orange sand (013)	Plough Scars	None	None
152	South-North	102 x 2m 204m ²	300-400mm	Orange brown sand and gravel (002), Dark brown sand and gravel (003), Grey Orange sand (013)	None	None	None
153	South-North	99.9 x 2m	360-560mm	Orange brown sand and gravel (002), Dark brown sand and gravel (003), Brown orange	None	None	None

		199.8m ²		sand (005), Light grey sand (015)			
154	East-West	53.4 x 2m 106.8m ²	280-300mm	Orange brown sand and gravel (002), Dark brown sand and gravel (003), Brown orange sand (005)	Triangular Pit [011]	None	None
155	Northwest-Southeast	100.4 x 2m 200.8m ²	240-280mm	Orange brown sand and gravel (002), Brown orange sand (005)	Ploughscars	None	None
156	East Southeast-West Northwest	51.1 x 2m 102.2m ²	250-360mm	Orange brown sand and gravel (002), Brown orange sand (005)	None	None	None
157	East-West	101.8 x 2m 203.6m ²	260-320mm	Orange brown sand and gravel (002), Dark brown sand and gravel (003), Brown orange sand (005)	None	None	None
158	Southwest-Northeast	98 x 2m 196m ²	290-310mm	Orange brown sand and gravel (002), Dark brown sand and gravel (003), Brown orange sand (005)	Ploughscars	None	None
159	North-South	100.5 x 2m 101m ²	250-360mm	Orange brown sand and gravel (002), Dark brown sand and gravel (003), Brown orange sand (005)	None	None	None
160	Southwest-Northeast	103.2 x 2m 206.4m ²	310-350mm	Orange brown sand and gravel (002)	Hedgerow [007]	None	None
161	East-West	50 x 2m 100m ²	250-370mm	Orange brown sand and gravel (002), Dark brown sand and gravel (003) and Yellow Brown sand and gravel (004).	None	None	None
162	South-North	102.3 x 2m	280-360mm	Orange brown sand and gravel (002), Dark brown sand and	None	None	None

		204.6m ²		gravel (003), Light brown Sand (013)			
163	Northwest-Southeast	101.2 x 2m 202.4m ²	250-360mm	Orange brown sand and gravel (002), Dark brown sand and gravel (003), Light brown Sand (013)	None	None	None
164	West-East	51.1 x 2m 102.2m ²	260-290mm	Orange brown sand and gravel (002), Light brown Sand (013)	None	None	None
165	Southeast-Northwest	51.1 x 2m 102.2 m ²	320-420mm	Orange brown sand and gravel (002), Dark brown sand and gravel (003), Brown orange sand (005)	None	None	None
166	North-South	104 x 2m 208m ²	320-410mm	Orange brown sand and gravel (002), Dark brown sand and gravel (003), Brown orange sand (005)	None	None	None
167	West-East	103.1 x 2m 206.2m ²	300-450mm	Orange brown sand and gravel (002), Brown orange sand (005)	None	None	None
168	Northeast-Southwest	100 x 2m 200m ²	400-450mm	Orange brown sand and gravel (002), Brown orange sand (005)	None	None	None
169	Southwest-Northeast	100 x 2m 200m ²	400-500mm	Orange brown sand and gravel (002), Brown orange sand (005)	None	None	None
170	North-South	100 x 2m 200m ²	400-800mm	Orange brown sand and gravel (002), Brown orange sand (005)	Pit [012]	None	None
171	Northwest-Southeast	51 x 2m 102m ²	300-350mm	Orange brown sand and gravel (002), Brown orange sand (005)	None	None	None
172	Northeast-	52.7 x	400-	Orange brown sand and gravel (002), Brown orange sand	None	None	None

	Southwest	2m 105.4m ²	450mm	(005)			
173	South-North	103.6 x 2m 207.2m ²	300- 500mm	Orange brown sand and gravel (002), Brown orange sand (005)	Ploughscars	None	None
174	Northwest- Southeast	99.7 x 2m 199.4m ²	280- 380mm	Orange brown sand and gravel (002), Dark brown sand and gravel (003), Light grey sand (015), Light red grey sand [048]	Furrows [045] aligned Northeast-southwest at +56m	None	None

Context Register

Context No.	Area/ Trench	Type	Description	Interpretation
001	All	Deposit	Dark brown ploughsoil with occasion to frequent small to medium sized stone inclusion and frequent rootlets.	Topsoil
002		Deposit	Orange brown sandy gravel with frequent small and medium sized stones incursions	Subsoil
003		Deposit	Dark brown sand and gravel with occasional small to medium sized stone inclusions	Subsoil.
004		Deposit	Yellow brown sand and gravel with frequent small to medium stone inclusions	Subsoil
005		Deposit	Brown orange sand with frequent small stone inclusions	Subsoil
006		Linear	Linear feature aligned NE-SW measuring 3m wide and 100mm deep with a wide U shaped profile and a brown silty sand with very frequent small stone inclusions	Plough Furrow
007		Deposit	Dark brown black sandy silt with occasional small to medium stone inclusion and frequent medium sized roots	Remnants of a hedgerow
008	23	Cut	Linear feature aligned N-S measuring 500mm wide with 2m visible within the trench and 130mm deep with a dark brown	Agricultural ditch

Context No.	Area/ Trench	Type	Description	Interpretation
			sandy silt fill	
009	24	Cut	Linear feature aligned N-S measuring 1m wide and 0.14m deep with 2m of length visible within the trench. With a dark brown silty sand fill	Furrow
010	25	Cut	Irregular circle in plan measuring 1.5m by 1.37m and 0.2m deep, with very dark brown black sandy silt fill with frequent charcoal and occasional fragments of burnt bone.	Pit
011	154	Cut	Triangular in plan, measuring 1.7x1.7x1.3m along it edges, topsoil fill and white glaze pottery present	Modern Pit
012		Cut	Rectangular in plan measuring 1m by 0.7m with a dark brown black silty sand fill with frequent small stone inclusions and a few sherds of modern white glaze pottery.	Modern pit
013		Deposit	Grey Orange sand with occasional small stone inclusions	Subsoil
014		Deposit	Light pink sand	Subsoil
015		Deposit	Light grey sand	Subsoil
016	-	-	Void	Void
017	106	Cut	Circular in plan measuring 5.8m by 2m visible within trench and 0.17m deep, with a loose dark brown silty sand fill with frequent rounded and sub rounded small to medium sized stone inclusions	Possible pit/geology
018	106	Cut	Circular in plan measuring 7.6m by 2m visible within trench and 0.18m deep, with a loose dark brown silty sand fill with frequent rounded and sub rounded small to medium sized stone inclusions	Possible pit/geology
019	-	-	Void	Void
020	106	Cut	Circular in plan measuring 7.8m by 2m visible within trench and 0.35m deep, with a loose dark brown silty sand fill with frequent rounded and sub rounded small to medium sized stone inclusions	Possible pit/geology

Context No.	Area/ Trench	Type	Description	Interpretation
021	107	Cut	Linear feature aligned E-W measuring 1.5m wide and 0.2m deep with only 2m of it length visible within the trench. Containing a very dark brown silty sand fill with frequent medium rounded stone inclusions	Possible Ditch
022	107	Cut	Oval in plan measuring 1.1m by 0.5m with a mid brown silty sand with frequent sub rounded and rounded small and medium stones	Possible pit
023	107	Cut	Oval in plan measuring 0.94m by 0.72m with a mid brown silty sand with frequent sub rounded and rounded small and medium stones	Possible pit
024	10	Cut	Linear feature aligned NE-SW measuring 2m in length visible within the trench and 1.17m wide	Furrow
025	107	Pit	Oval in plan measuring 1.12m by 0.78m and 0.4m deep with a mid –dark brown silty sand fill with frequent rounded and sub-rounded small to medium stone inclusions. It had near vertical sides and a concave base	Pit/posthole
026	107	Cut	Linear aligned N-S measuring 2.56m with the trench 0.48m wide and 0.12m deep with a mid grey brown silty sand	Possible agricultural ditch
027	107	Posthole	Circular in plan measuring 0.40 in diameter with a mid grey brown silty sand fill with frequent rounded to sub-rounded small stone inclusions	Possible Posthole.
028	107	Linear	Linear aligned ENE-WSW measuring 2m with the trench 0.58m wide and 0.12m deep with a mid grey brown silty sand.	Possible agricultural ditch
029	107	Linear	Linear feature aligned NE-SW measuring 2m within trench and 1m wide with a mid brown silty sand fill containing frequent sub-rounded to rounded small to medium sized stones	Furrow
030	107	Linear	Linear feature aligned NE-SW measuring 2m within trench and 1.3m wide with a mid brown silty sand fill containing frequent sub-rounded to rounded small to medium sized stones	Furrow
031	107	Posthole	Circular in plan measuring 0.47m in diameter and 0.19m deep with a mid brown silty sand fill	Possible posthole

Context No.	Area/ Trench	Type	Description	Interpretation
032	108	Posthole	Circular in plan measuring 0.3m in diameter and 0.27m deep with a mid grey brown silty sand fill	Posthole
033	108	Linear	Linear feature aligned NW-SE measuring 2m within the trench, 0.86m wide and 0.09m deep	Furrow
034	109	Linear	Linear feature aligned NW-SE measuring 2m within the trench 0.73m wide and 0.23m deep with a mid grey brown silty sand with occasional small rounded stone inclusions	Furrow
035	109	Linear	Linear feature aligned ENE-WSW measuring 2.2m within the trench and 1.2m wide with a mid grey brown silty sand with frequent rounded and sub rounded small to medium sized stone inclusions	Furrow
036	109	Linear	Linear feature aligned NE-SW measuring 1.95 with the trench and 0.8m wide with a mid brown silty sand fill with frequent rounded and sub rounded small to medium sized stone inclusions	Furrow
037	109	Linear	Linear feature aligned NE-SW measuring 2.15m within the trench and 1.7m wide. Mid brown silty sand fill with frequent rounded and sub rounded small to medium sized stone inclusions	Furrow
038		Group Number	Linear features	Furrows
039	115	Linear	Linear feature aligned SW-NE measuring 2.5m within the trench, 1.4m wide and 0.11m deep. With a mid brown silty sand fill and frequent rounded and sub rounded small stone inclusions	Furrow
040	115	Linear	Linear feature aligned SW-NE measuring 2.7m within the trench, 0.54m wide and 0.06m deep. With a mid brown silty sand fill and frequent rounded and sub rounded small stone inclusions	Furrow
041	38	Posthole	Circular in plan measuring 0.5m in diameter and 0.28m deep with near vertical sides and a flat base	Posthole.

Context No.	Area/ Trench	Type	Description	Interpretation
042	117	Floor Surface	Rectangular roughly stone surface measuring 2m within trench and approximately 4.5m wide	Possible stone paving
043	117	Floor Surface	Sub rectangular roughly paved stone surface measuring 7.9m long and 2m wide within the trench	Stone paving
044	131	Deposit	Very dark brown humic silty sand with occasional small and medium sized stones	Humic deposit from edge of loch
045		Linear	Linear features aligned NE-SW measuring 0.7m -2.7m wide and 0.07-0.13m deep	Linear group number
046	132	Linear	Linear feature aligned NE-SW with a dark brown silty sand with frequent small and medium sized stone inclusions measuring 2.7m within the trench and 0.62m wide and 0.08m deep..	Furrow
047	130	Linear	Linear feature aligned NE-SW with a dark brown silty sand with frequent small and medium sized stone inclusions measuring 2m within the trench and 2.72m wide and 0.13m deep	Furrow
048		Deposit	Light red grey sand with occasional rounded to angular small and medium sized stones	Subsoil
049	84	Cut	Sub circular in plan measuring 0.43m diameter with near vertical sides and a concave base. With a black silty sand fill with occasional small stone inclusions	Possible posthole/Bioturbation
050	89	Cut	Rounded rectangle in plan visible within the trench aligned NW-SE, measuring 1.8m long and 2.15m wide and 0.65m deep. With gently sloping to near vertical side and a concave base. Containing a brown orange silty sand with frequent small and medium sized stone inclusions	Possible ditch terminus/ pit
051	72	Cut	Linear feature aligned NE-SW measuring 2m long within the trench 1.25m wide and 0.26m deep with gently sloping side and a concave base. Filled with a brown silty sand with occasional small to medium sized stone inclusions	Possible ditch
051a	73	Cut	Linear feature aligned NE-SW measuring 2m long within the trench 1.25m wide with gently sloping side and a concave base. Filled with a brown silty sand with occasional small to medium sized stone inclusions. Appears to be a continuation of [051] in	Possible ditch

Context No.	Area/ Trench	Type	Description	Interpretation
			Trench 72	
052	73	Cut	Linear feature aligned NE-SW measuring 2m long within the trench 1.5m wide. Filled with a brown silty sand with occasional small to medium sized stone inclusions. Runs parallel with [051a]	Possible ditch
053	57	Cut	Linear feature aligned N-S measuring 2m with the trench, 4.84 m wide and 0.58m deep with gently sloping sides and a flat base. The fill consisted of a brown silty sand with occasional small to medium sized stones.	Ditch/possible headrigg
054	46	Linear	Linear feature aligned NW-SE measuring 3m in length with the trench and 0.3m wide with a 100mm diameter metal pipe running down the centre of the linear	Modern service trench
055	51	Cut	Curvilinear feature measuring 9.5m long, 0.7m wide and 0.18m deep. With sloping sides and a concave base containing a grey brown silty sand with frequent $\leq 150\text{mm}$ rounded and sub angular stones inclusions.	Ditch
056	46	Linear	Linear feature aligned NE-SW measuring 2.4m long with the trench and 0.5m wide with a mid brown sandy silt fill and frequent sub angular and angular small to medium sized stone inclusions.	Furrow
057	46	Linear	Linear feature aligned NE-SW measuring 2.4m within the trench and 0.6m wide with a mid brown sandy silt fill and frequent sub angular and angular small to medium sized stone inclusions.	Furrow
058	45	Linear	Linear feature aligned NE-SW measuring 2.4m long with the trench and 0.5m wide with a mid brown sandy silt fill and frequent sub angular and angular small to medium sized stone inclusions. Maybe continuation of (056)	Furrow
059	44	Pit	Oval in plan measuring 0.84m by 0.7m and 0.28m deep, with near vertical sides and a flat base and a brown grey sandy silt with frequent rounded stone inclusions.	Pit
060			Void	

Context No.	Area/ Trench	Type	Description	Interpretation
061	36		Void	Animal Burrow
062			Void	
063	38	Fill	Orange brown sand with frequent small rounded stone inclusions	Primary fill of [041]
064	38	Fill	Dark brown silty sand with frequent rounded and sub-angular large stone inclusions (packing stone) and frequent pottery sherds	Secondary fill of posthole [041]
065	130	Pit	Circular in plan measuring 0.9m in diameter with near vertical sides and a flat base, with a brown silty sand with occasional small to medium sized stone inclusions	Pit that is part of the pit alignment
066	130	Pit	Circular in plan measuring 0.94m by 0.75m and 0.36m deep with near vertical sides and a flat base, with a brown silty sand with occasional small to medium sized stone inclusions	Pit that is part of the pit alignment
067	130	Pit	Circular in plan measuring 0.45m in diameter, with a brown silty sand with occasional small to medium sized stone inclusions	Pit that is part of the pit alignment
068	30	Pit/posthole	Circular in plan, measuring 0.48m in diameter With a grey brown sand fill with occasional sub angular stone inclusions	Pit that is part of the pit alignment
069	30	Pit/posthole	Circular in plan, measuring 0.48m in diameter and 0.34m deep with near vertical sides and a flat base. With a grey brown sand fill with occasional sub angular stone inclusions	Pit that is part of the pit alignment

Photographic Register

Image No.	Print		Slide		Digital	Description	From	Date
	Film No.	Neg. No.	Film No.	Neg. No.				
1	1	1			1	General Shot	N	19/01/11
2					2	General Shot	N	19/01/11

Image No.	Print		Slide		Digital	Description	From	Date
	Film No.	Neg. No.	Film No.	Neg. No.				
3	1	2			3	General Shot	NE	19/01/11
4	1				4	General Shot	NE	19/01/11
5	1	3	1	1	5	Trench 1	E	19/01/11
6	1				6	Trench 1	E	19/01/11
7	1	4			7	Trench 3	NE	19/01/11
8	1				8	Trench 3	NE	19/01/11
9	1	5			9	Trench 4	E	19/01/11
10	1				10	Trench 4	E	19/01/11
11	1	6			11	Trench 5	NW	19/01/11
12	1				12	Trench 5	NW	19/01/11
13	1	7			13	Trench 4	WSW	20/01/11
14	1	8	1	2	14	Trench 6	N	20/01/11
15	1	9			15	Trench 2	NE	20/01/11
16	1	10			16	Trench 8	W	20/01/11
17	1	11			17	Trench 7	WSW	20/01/11
18	1	12			18	Trench 9	ENE	20/01/11
19	1	13			19	Trench 10	NE	24/01/11
20	1	14			20	Trench 11	NW	24/01/11
21	1	15			21	Trench 12	NE	24/01/11
22	1	16			22	Trench 13	SE	24/01/11
23	1	17			23	Trench 14	SE	24/01/11
24	1	18			24	Trench 15	SW	24/01/11
25	1	19			25	Trench 16	SW	24/01/11

Image No.	Print		Slide		Digital	Description	From	Date
	Film No.	Neg. No.	Film No.	Neg. No.				
26	1	20	1	3	26	Trench 17	NE	24/01/11
27	1	21			27	Trench 24	W	24/01/11
28	1	22			28	Trench 25	W	24/01/11
29	1	23			29	Trench 23	NE	24/01/11
30	1	24			30	Trench 19	E	24/01/11
31	1	25			31	Trench 18	NW	24/01/11
32	1	26			32	Trench 20	NW	24/01/11
33	1	27			33	Trench 21	NW	24/01/11
34	1	28			34	Trench 22	NW	24/01/11
35	1	29			35	General shot of [008]	SW	28/01/11
36	1	30			36	Section of [008]	SW	28/01/11
37	1	31			37	Trench 23	SW	28/01/11
38	1	32			38	General shot of possible furrow in TR24	N	28/01/11
39	1	33			39	Section of possible furrow in TR24	N	28/01/11
40	1	34			40	Trench 24	E	28/01/11
41	1	35	1	4	41	Trench 25	E	28/01/11
42	1	36			42	Section of Pit in TR25	W	28/01/11
43	2	1			43	Trench 167	W	28/01/11
44	2	2				Trench 167	W	28/01/11
45	2	3			44	Trench 168	W	28/01/11
46	2	4			45	Trench 171	NW	28/01/11
47	2	5			46	Trench 169	SW	28/01/11
48	2	6			47	Trench 170	SW	28/01/11

Image No.	Print		Slide		Digital	Description	From	Date
	Film No.	Neg. No.	Film No.	Neg. No.				
49	2	7			48	Trench 172	SW	28/01/11
50	2	8	1	5	49	Trench 173	S	28/01/11
51	2	9			50	Trench 157	E	28/01/11
52	2	10			51	Trench 154	W	31/01/11
53	2	11			52	Trench 155	NW	31/01/11
54	2	12			53	Trench 158		31/01/11
55	2	13			54	Trench 162		31/01/11
56	2	14			55	Trench 160		31/01/11
57	2	15			56	Trench 161		31/01/11
58	2	16			57	Trench 156		31/01/11
59	2	17			58	Trench 163		31/01/11
60	2	18			59	Trench 164		31/01/11
61	2	19			60	Trench 166	N	01/02/11
62	2	20			61	Trench 165	SE	01/02/11
63	2	21			62	Trench 153	S	01/02/11
64	2	22			63	Trench 152	S	01/02/11
65	2	23			64	Tree bole Trench 152	N	01/02/11
66	2	24			65	Trench 151	SW	01/02/11
67	2	25			66	Trench 150	SE	01/02/11
68	2	26			67	Trench 149	S	01/02/11
69	2	27			68	Trench 148	N	03/02/11
70	2	28	1	6	69	Trench 147	S	03/02/11
71	2	29			70	Trench 146	SW	03/02/11

Image No.	Print		Slide		Digital	Description	From	Date
	Film No.	Neg. No.	Film No.	Neg. No.				
72	2	30			71	Trench 143	SW	03/02/11
73	2	31			72	Trench 145	W	03/02/11
74	2	32			73	Trench 144	SW	03/02/11
75	2	33			74	Trench 140	NNE	03/02/11
76	2	34			75	Trench 141	N	03/02/11
77	2	35	1	7	76	Trench 142	NW	03/02/11
78	2	36			77	Trench 102	W	08/02/11
79	3	1			78	Trench 103	SE	08/02/11
80	3	2	1	9	79	Trench 104	NW	08/02/11
81	3	3	1	10	80	Trench 105	S	08/02/11
82	3	4			81	Trench 106	W	08/02/11
83	3	5			82	Trench 107	NW	08/02/11
84	3	6			83	Trench 108	NW	08/02/11
85	3	7			84	Trench 109	W	08/02/11
86	3	8			85	Trench 110	NW	08/02/11
87	3	9	1	11	86	Trench 111	W	08/02/11
88	3	10			87	Trench 112	NW	08/02/11
89	3	11			88	Trench 113	NW	08/02/11
90	3	12			89	Trench 114	NW	08/02/11
91	3	13			90	Trench 115	W	08/02/11
92	3	14			91	Trench 116	SW	08/02/11
93	3	15	1	12	92	Trench 117	SW	08/02/11
94	3	16			93	Trench 118	S	08/02/11

Image No.	Print		Slide		Digital	Description	From	Date
	Film No.	Neg. No.	Film No.	Neg. No.				
95	3	17	1	13	94	Linear [021]	NE	09/02/11
96	3	18			95	Pits [022] & [023]	NE	09/02/11
97	3	19			96	Linear [024] and Pit [025]	NE	09/02/11
98	3	20			97	Features [026], [027] & [028],	NE	09/02/11
99	3	21			98	Linear [029]	NE	09/02/11
100	3	22			99	Linear [030]	NE	09/02/11
101	3	23			100	Pit [031]	NE	09/02/11
102	3	24	1	14	101	Posthole [032]	SE	09/02/11
103	3	25			102	Linear [033]	SE	09/02/11
104	3	26			103	Linear [034]	NE	09/02/11
105	3	27			104	Linear [035]	NE	09/02/11
106	3	28			105	Linear [036]	ENE	10/02/11
107	3	29	1	15	106	Void		
108	3	30	1	16	107	Linear [037]	SW	10/02/11
109					108	Pit [041]	SE	10/02/11
110					109	Pit [041]	SE	10/02/11
111					110	Pit [041]	SE	10/02/11
112	3	31			111	Pit [041]	SE	10/02/11
113	3	32			112	Pit [041]	NNE	10/02/11
114					113	Pit [020]	N	10/02/11
115	3	33			114	Pit [020]	N	10/02/11
116	3	34	1	18	115	Pit [020]	E	10/02/11
117	3	35	1	19	116	Linear [039]	NNE	10/02/11

Image No.	Print		Slide		Digital	Description	From	Date
	Film No.	Neg. No.	Film No.	Neg. No.				
118	3	36			117	Linear [040]	NE	10/02/11
119	4	1			118	Linear [038]	NE	10/02/11
120	4	2			119	Pit [017]	NW	10/02/11
121	4	3	1	20	120	Pit [018]	NW	10/02/11
122	4	4	1	21	121	West side of Pit [020] section	N	10/02/11
123	4	5	1	22	122	East side of Pit [020] section	N	10/02/11
124	4	6	1	23	123	Oblique shot of [020]	NW	10/02/11
125	4	7	1	24	124	NE facing section of Pit [025]	NE	10/02/11
126	4	8			125	Section through (026) and (028)	NE	10/02/11
127	4	9	1	25	126	Surface [043]	NE	10/02/11
128	4	10			127	Surface [043]	NW	11/02/11
129	4	11			128	Surface [043]	NW	11/02/11
130	4				129	Surface [043]	NW	11/02/11
131	4				130	Surface [043]	NW	11/02/11
132	4	12			131	Surface [043]	NW	11/02/11
133	4	13	1	26	132	Surface [042]	NW	11/02/11
134	4	14	1	27		Surface [042]	NW	11/02/11
135	4	15			133	Surface [042]	NW	11/02/11
136	4	16			134	Trench 128	N	11/02/11
137	4	17			135	Trench 129	NE	11/02/11
138	4	18			136	Trench 130	SW	11/02/11
139	4	19			137	Trench 131	NE	14/02/11
140	4	20			138	Trench 132	NE	14/02/11

Image No.	Print		Slide		Digital	Description	From	Date
	Film No.	Neg. No.	Film No.	Neg. No.				
141	4	21	1	28	139	Trench 133	S	14/02/11
142	4	22			140	Trench 134	N	14/02/11
143	4	23			141	Trench 135	NW	14/02/11
144	4	24			142	Trench 136	NW	14/02/11
145	4	25			143	Trench 137	SW	14/02/11
146	4	26			144	Trench 138	NE	14/02/11
147	4	27	1	29	145	Trench 139	NE	14/02/11
148	4	28	1	30	146	NE facing section of [046]	SW	14/02/11
149	4	29			147	NW facing section of [047]	NW	14/02/11
150	4	30			148	Trench 118	S	14/02/11
151	4	31			149	Trench 119	S	14/02/11
152	4	32			150	Trench 120	SE	14/02/11
153	4	33			151	Trench 121	E	14/02/11
154	4	34			152	Trench 122	NE	14/02/11
155	4	35			153	Trench 123	S	14/02/11
156	4	36	1	31	154	Trench 93	E	14/02/11
157	5	1			155	Trench 94	E	14/02/11
158	5	2			156	Trench 95	E	14/02/11
159	5	3			157	Trench 96	S	14/02/11
160	5	4			158	Trench 97	SW	14/02/11
161	5	5			159	Trench 98	SW	14/02/11
162	5	6			160	Trench 99	SW	14/02/11
163	5	7	1	32	161	Trench 100	W	14/02/11

Image No.	Print		Slide		Digital	Description	From	Date
	Film No.	Neg. No.	Film No.	Neg. No.				
164	5	8				Trench 101	SE	15/02/11
165	5	9			162	Trench 80	NE	15/02/11
166	5	10			163	Trench 81	E	15/02/11
167	5	11			164	Trench 82	NE	15/02/11
168	5	12			165	Trench 83	SE	15/02/11
169	5	13	1	33	166	Trench 84	S	15/02/11
170	5	14			167	Trench 85	SE	15/02/11
171	5	15			168	Trench 86	E	15/02/11
172	5	16			169	Trench 87	SE	15/02/11
173	5	17			170	Trench 88	E	15/02/11
174	5	18			171	Trench 174	S	15/02/11
175	5	19			172	Trench 89	SW	15/02/11
176	5	20	1	34	173	Trench 90	SW	15/02/11
177	5	21			174	Trench 91	SW	15/02/11
178	5	22			175	Trench 92	E	15/02/11
179	5	23			176	Trench 79	SW	15/02/11
180	5	24			177	Trench 77	S	15/02/11
181	5	25			178	Trench 76	SE	15/02/11
182	5	26	1	35	179	Trench 78	SW	15/02/11
183	5	27			180	Trench 75	E	15/02/11
184	5	28			181	Trench 76	SE	15/02/11
185	5	29			182	Pit/terminus [050]	W	15/02/11
186	5	30	1	36	183	Posthole [049]		15/02/11

Image No.	Print		Slide		Digital	Description	From	Date
	Film No.	Neg. No.	Film No.	Neg. No.				
187	5	31	2	1	184	Pit/terminus [050]	NW	16/02/11
188	5	32	2	2	185	Pit/terminus [050]	E	16/02/11
189	5	33			186	Trench 72	SE	16/02/11
190	5	34			187	Trench 73	S	16/02/11
191	5	35			188	Trench 74	S	16/02/11
192	5	36			189	Trench 68	SE	16/02/11
193	6	1			190	Trench 67	SE	16/02/11
194	6	2			191	Trench 69	N	16/02/11
195	6	3			192	Trench 64	SW	16/02/11
196	6	4	2	3	193	Ditch [051]	NE	17/02/11
197	6	5			194	Trench 66	W	17/02/11
198	6	6			195	Trench 70	S	17/02/11
199	6	7			196	Trench 71	SW	17/02/11
200	6	8			197	Trench 65	S	17/02/11
201	6	9	2	4	198	Trench 62	W	17/02/11
202	6	10			199	Trench 63	W	17/02/11
203	6	11			200	Trench 64	SW	17/02/11
204	6	12			201	Trench 61	SE	17/02/11
205	6	13			202	Trench 60	SE	17/02/11
206	6	14			203	Feature [053]	S	18/02/11
207	6	15	2	5	204	Feature [053]	SE	18/02/11
208	6	16			205	Feature [053]	N	18/02/11
209	6	17			206	Trench 57	E	18/02/11

Image No.	Print		Slide		Digital	Description	From	Date
	Film No.	Neg. No.	Film No.	Neg. No.				
210	6	18	2	6	207	Feature [055] oblique shot	NW	18/02/11
211	6	19			208	Trench 42	SW	18/02/11
212	6	20	2	7	209	Feature [055]	S	18/02/11
213	6	21			210	Feature [055]	S	18/02/11
214	6	22			211	Trench 56	E	21/02/11
215	6	23			212	Trench 59	NW	21/02/11
216	6	24			213	Trench 53	NW	21/02/11
214	6	25			214	Trench 58	SW	21/02/11
217	6	26	2	8	215	Trench 55	NW	21/02/11
218	6	27			216	Trench 54	N	21/02/11
219	6	28			217	Trench 51	N	21/02/11
220	6	29			218	Trench 52	E	21/02/11
221	6	30			219	Trench 61	W	21/02/11
222	6	31			220	Trench 95	E	21/02/11
223	6	32	2	9	221	Trench 49	E	21/02/11
224	6	33			222	Trench 46	NE	21/02/11
225	6	34			223	Trench 50	S	21/02/11
226	6	35			224	Trench 48	S	21/02/11
227	6	36			225	Trench 47	SE	21/02/11
228	7	1			226	Trench 45	S	21/02/11
229	7	2	2	10	227	Trench 44	S	21/02/11
230	7	3			228	Trench 43	SE	21/02/11
231	7	4			229	Trench 36	W	21/02/11

Image No.	Print		Slide		Digital	Description	From	Date
	Film No.	Neg. No.	Film No.	Neg. No.				
232	7	5			230	Trench 38	N	21/02/11
233	7	6			231	Trench 37	W	21/02/11
234	7	7			232	Trench 39	W	21/02/11
235	7	8	2	11	233	Trench 40	SW	21/02/11
236	7	9			234	Trench 41	SW	21/02/11
237	7	10			235	Trench 33	S	21/02/11
238	7	11			236	Trench 34	S	21/02/11
239	7	12			237	Trench 29	NW	21/02/11
240	7	13			238	Trench 28	W	21/02/11
241	7	14	1	12	239	Trench 27	W	21/02/11
242	7	15			240	Trench 26	W	21/02/11
243	7	16			241	Trench 31	SE	21/02/11
244	7	17			242	Trench 30	SE	21/02/11
245	7	18			243	Trench 30 Extension	NE	21/02/11
246	7	19			244	Trench 32	S	21/02/11
247	7	20				[062]	SW	21/02/11
248	7	21	2	13	245	[062]	SW	21/02/11
249	7	23	2	14	246	NNE facing section of Pit [041]	W	21/02/11
250	7	24	2	15	247	Features [065], [066], [067]	W	22/02/11
251	7	25	2	16	248	Features [065], [066], [067]	SE	22/02/11
252	7	26	2	17	249	Pre excavation shot of Pits [068], [069]	S	22/02/11
253	7	27	2	18	250	Post excavation shot of pit/posthole [069]	S	22/02/11
254	7	28	2	19	251	SSW facing section of pit [066]	SSW	22/02/11

Image No.	Print		Slide		Digital	Description	From	Date
	Film No.	Neg. No.	Film No.	Neg. No.				
255	7	29	2	20	252	North facing section of pit [065]	S	22/02/11

Drawing Register

Drawing No.	Sheet No.	Area/ Trench	Drawing Type	Scale	Description	Drawn By	Date
1	1	1	Plan	1:100	Trench 1	AM	19/01/11
2	1	4	Plan	1:100	Trench 4	LMC	20/01/11
3	1	5	Plan	1:100	Trench 5	LMC	20/01/11
4	1	6	Plan	1:100	Trench 6	LMC	20/01/11
5	2	3	Plan	1:100	Trench 3	LMC	21/01/11
6	2	2	Plan	1:100	Trench 2	LMC	21/01/11
7	2	8	Plan	1:100	Trench 8	LMC	21/01/11
8	2	7	Plan	1:100	Trench 7	LMC	21/01/11
9	2	9	Plan	1:100	Trench 9	LMC	21/01/11
10	2	10	Plan	1:100	Trench 10	LMC	21/01/11
11	3	11	Plan	1:100	Trench 11	LMC	24/01/11
12	3	12	Plan	1:100	Trench 12	LMC	24/01/11
13	3	13	Plan	1:100	Trench 13	LMC	24/01/11
14	3	14	Plan	1:100	Trench 14	LMC	24/01/11
15	3	15	Plan	1:100	Trench 15	LMC	24/01/11
16	3	16	Plan	1:100	Trench 16	DG	25/01/11
17	4	17	Plan	1:100	Trench 17	DG	25/01/11
18	4	18	Plan	1:100	Trench 18	DG	26/01/11

Drawing No.	Sheet No.	Area/ Trench	Drawing Type	Scale	Description	Drawn By	Date
19	4	19	Plan	1:100	Trench 19	DG	26/01/11
20	4	20	Plan	1:100	Trench 20	DG	26/01/11
21	4	21	Plan	1:100	Trench 21	DG	26/01/11
22	4	22	Plan	1:100	Trench 22	DG	26/01/11
23	4	23	Plan	1:100	Trench 23	DG	27/01/11
24	5	24	Plan	1:100	Trench 24	SB	28/01/11
25	5	25	Plan	1:100	Trench 25	LMC	28/01/11
26	5	24	Section	1:10	[009]	SB	28/01/11
27	5	157	Plan	1:100	Trench 157	LMC	31/01/11
28	5	154	Plan	1:100	Trench 154	LMC	31/01/11
29	5	155	Plan	1:100	Trench 155	LMC	31/01/11
30	5	158	Plan	1:100	Trench 158	LMC	31/01/11
31	5	25	Section	1:10	SW facing section of [010]	LMC	31/01/11
32	6	167	Plan	1:100	Trench 167	AM	28/01/11
33	6	168	Plan	1:100	Trench 168	AM	28/01/11
34	6	169	Plan	1:100	Trench 169	AM	28/01/11
35	6	170	Plan	1:100	Trench 170	AM	28/01/11
36	6	172	Plan	1:100	Trench 172	AM	28/01/11
37	6	173	Plan	1:100	Trench 173	AM	28/01/11
38	6	171	Plan	1:100	Trench 171	AM	28/01/11
39	7	159	Plan	1:100	Trench 159	LMC	31/01/11
40	7	160	Plan	1:100	Trench 160	LMC	31/01/11
41	7	161	Plan	1:100	Trench 161	LMC	31/01/11
42	7	162	Plan	1:100	Trench 162	LMC	31/01/11

Drawing No.	Sheet No.	Area/ Trench	Drawing Type	Scale	Description	Drawn By	Date
43	7	156	Plan	1:100	Trench 156	LMC	31/01/11
44	7	163	Plan	1:100	Trench 163	LMC	31/01/11
45	7	164	Plan	1:100	Trench 164	LMC	31/01/11
46	8	166	Plan	1:100	Trench 166	LMC	01/02/11
47	8	165	Plan	1:100	Trench 167	LMC	01/02/11
48	8	153	Plan	1:100	Trench 153	LMC	01/02/11
49	8	152	Plan	1:100	Trench 152	LMC	01/02/11
50	8	151	Plan	1:100	Trench 151	LMC	01/02/11
51	8	150	Plan	1:100	Trench 150	LMC	01/02/11
52	8	149	Plan	1:100	Trench 149	LMC	01/02/11
53	9	148	Plan	1:100	Trench 148	DOD	03/02/11
54	9	147	Plan	1:100	Trench 147	DOD	03/02/11
55	9	146	Plan	1:100	Trench 146	DOD	03/02/11
56	9	143	Plan	1:100	Trench 143	DOD	03/02/11
57	9	140	Plan	1:100	Trench 140	DOD	03/02/11
58	9	142	Plan	1:100	Trench 142	DOD	03/02/11
59	9	141	Plan	1:100	Trench 141	DOD	03/02/11
60	10	145	Plan	1:100	Trench 145	DOD	03/02/11
61	10	144	Plan	1:100	Trench 144	DOD	03/02/11
62	11	124	Plan	1:100	Trench 124	DOD	03/02/11
63	11	125	Plan	1:100	Trench 125	DOD	03/02/11
64	11	126	Plan	1:100	Trench 126	DOD	03/02/11
65	11	127	Plan	1:100	Trench 127	DOD	03/02/11
66	11	102	Plan	1:100	Trench 102	DOD	07/02/11

Drawing No.	Sheet No.	Area/ Trench	Drawing Type	Scale	Description	Drawn By	Date
67	11	103	Plan	1:100	Trench 103	DOD	07/02/11
68	11	104	Plan	1:100	Trench 104	DOD	07/02/11
69	11	105	Plan	1:100	Trench 105	DOD	07/02/11
70	11	106	Plan	1:100	Trench 106	DOD	07/02/11
71	11	107	Plan	1:100	Trench 107	DOD	07/02/11
72	11	108	Plan	1:100	Trench 108	DOD	07/02/11
73	11	109	Plan	1:100	Trench 109	DOD	07/02/11
74	11	110	Plan	1:100	Trench 110	DOD	07/02/11
75	12	111	Plan	1:100	Trench 111	DOD	07/02/11
76	12	112	Plan	1:100	Trench 112	DOD	07/02/11
77	12	113	Plan	1:100	Trench 113	DOD	07/02/11
78	12	114	Plan	1:100	Trench 114	DOD	07/02/11
79	12	115	Plan	1:100	Trench 115	DOD	07/02/11
80	12	116	Plan	1:100	Trench 116	DOD	08/02/11
81	12	117	Plan	1:100	Trench 117	DOD	08/02/11
82	13	107	Section	1:10	NE Facing section of [021]	DOD	08/02/11
83	13	107	Section	1:10	NE Facing section of [031]	DOD	09/02/11
84	13	108	Section	1:10	SE Facing section of [032]	SB	09/02/11
85	13	108	Section	1:20	S Facing section of [037]	SB	09/02/11
86	14	115	Section	1:10	SSE Facing section of [039]	LMC	10/02/11
87	14	115	Section	1:10	SW Facing section of [040]	LMC	10/02/11
88	14	106	Section	1:10	SSE Facing section of [017]	DOD	10/02/11
89	14	106	Section	1:10	SSE Facing section of [018]	DOD	10/02/11
90	15	106	Section	1:10	N Facing section of [020]	LMC	10/02/11

Drawing No.	Sheet No.	Area/ Trench	Drawing Type	Scale	Description	Drawn By	Date
91	15	107	Section	1:10	NE Facing section of [026] & [028]	LMC	10/02/11
92	15	107	Section	1:10	NE Facing section of [025]	LMC	10/02/11
93	16	128	Plan	1:100	Trench 128	LMC	11/02/11
94	16	129	Plan	1:100	Trench 129	LMC	11/02/11
95	16	130	Plan	1:100	Trench 130	DOD	11/02/11
96	16	131	Plan	1:100	Trench 131	DOD	11/02/11
97	16	132	Plan	1:100	Trench 132	DOD	14/02/11
98	16	133	Plan	1:100	Trench 133	DOD	14/02/11
99	16	135	Plan	1:100	Trench 135	DOD	14/02/11
100	17	134	Plan	1:100	Trench 134	SB	14/02/11
101	17	136	Plan	1:100	Trench 136	SB	14/02/11
102	17	137	Plan	1:100	Trench 137	SB	14/02/11
103	17	138	Plan	1:100	Trench 138	SB	14/02/11
104	17	139	Section	1:10	N Facing Section of [047]	SB	14/02/11
105	17	130	Section	1:10	NE Facing section of [046]	LMC	14/02/11
106	17	132	Plan	1:100	Trench 132	DOD	14/02/11
107	18	118	Plan	1:100	Trench 118	SB	14/02/11
108	18	119	Plan	1:100	Trench 119	SB	14/02/11
109	18	120	Plan	1:100	Trench 120	SB	14/02/11
110	18	121	Plan	1:100	Trench 121	SB	14/02/11
111	18	122	Plan	1:100	Trench 122	SB	14/02/11
112	18	97	Plan	1:100	Trench 97	SB	14/02/11
113	18	99	Plan	1:100	Trench 99	SB	14/02/11
114	18	101	Plan	1:100	Trench 101	SB	14/02/11

Drawing No.	Sheet No.	Area/ Trench	Drawing Type	Scale	Description	Drawn By	Date
115	19	93	Plan	1:100	Trench 93	DOD	14/02/11
116	19	94	Plan	1:100	Trench 94	DOD	14/02/11
117	19	95	Plan	1:100	Trench 95	DOD	14/02/11
118	19	96	Plan	1:100	Trench 96	DOD	14/02/11
119	19	98	Plan	1:100	Trench 98	DOD	14/02/11
120	19	100	Plan	1:100	Trench 100	DOD	14/02/11
121	19	92	Plan	1:100	Trench 92	DOD	15/02/11
122	19	91	Plan	1:100	Trench 91	DOD	15/02/11
123	19	90	Plan	1:100	Trench 90	DOD	15/02/11
124	20	89	Plan	1:100	Trench 89	DOD	15/02/11
125	20	88	Plan	1:100	Trench 88	DOD	15/02/11
126	20	87	Plan	1:100	Trench 87	DOD	15/02/11
127	20	86	Plan	1:100	Trench 86	DOD	15/02/11
128	20	85	Plan	1:100	Trench 85	DOD	15/02/11
129	20	84	Plan	1:100	Trench 84	DOD	15/02/11
130	20	174	Plan	1:100	Trench 174	DOD	15/02/11
131	20	83	Plan	1:100	Trench 83	DOD	15/02/11
132	21	82	Plan	1:100	Trench 82	DOD	15/02/11
133	21	81	Plan	1:100	Trench 81	DOD	16/02/11
134	21	80	Plan	1:100	Trench 80	DOD	16/02/11
135	21	78	Plan	1:100	Trench 78	DOD	16/02/11
136	21	79	Plan	1:100	Trench 79	DOD	16/02/11
137	21	77	Plan	1:100	Trench 77	DOD	16/02/11
138	22	76	Plan	1:100	Trench 76	DOD	16/02/11

Drawing No.	Sheet No.	Area/ Trench	Drawing Type	Scale	Description	Drawn By	Date
139	22	75	Plan	1:100	Trench 75	DOD	16/02/11
140	22	72	Plan	1:100	Trench 72	DOD	16/02/11
141	22	73	Plan	1:100	Trench 73	DOD	16/02/11
142	22	74	Plan	1:100	Trench 74	DOD	16/02/11
143	22	68	Plan	1:100	Trench 68	DOD	16/02/11
144	22	70	Plan	1:100	Trench 70	DOD	17/02/11
145	23	69	Plan	1:100	Trench 69	DOD	17/02/11
146	23	71	Plan	1:100	Trench 71	DOD	17/02/11
147	23	65	Plan	1:100	Trench 65	DOD	17/02/11
148	23	66	Plan	1:100	Trench 66	DOD	17/02/11
149	23	67	Plan	1:100	Trench 67	DOD	17/02/11
150	23	64	Plan	1:100	Trench 64	DOD	17/02/11
151	24	63	Plan	1:100	Trench 63	DOD	17/02/11
152	24	62	Plan	1:100	Trench 62	DOD	17/02/11
153	24	61	Plan	1:100	Trench 61	DOD	17/02/11
154	24	60	Plan	1:100	Trench 60	DOD	17/02/11
155	24	57	Plan	1:100	Trench 57	DOD	17/02/11
156	24	58	Plan	1:100	Trench 58	DOD	17/02/11
157	24	59	Plan	1:100	Trench 59	DOD	17/02/11
158	25	89	Section	1:10	NW Facing section of [050]	LMC	15/02/11
159	25	84	Section	1:10	W Facing section [049]	LMC	16/02/11
160	25	72	Section	1:10	SW Facing section [051]	LMC	17/02/11
161	26	52	Plan	1:100	Trench 52	DOD	17/02/11
162	26	53	Plan	1:100	Trench 53	DOD	17/02/11

Drawing No.	Sheet No.	Area/ Trench	Drawing Type	Scale	Description	Drawn By	Date
163	26	54	Plan	1:100	Trench 54	DOD	17/02/11
164	26	55	Plan	1:100	Trench 55	DOD	17/02/11
165	26	46	Plan	1:100	Trench 46	DOD	18/02/11
166	26	51	Plan	1:100	Trench 51	DOD	18/02/11
167	27	56	Plan	1:100	Trench 56	SB	18/02/11
168	27	45	Plan	1:100	Trench 45	SB	18/02/11
169	27	48	Plan	1:100	Trench 48	SB	18/02/11
170	27	47	Plan	1:100	Trench 47	SB	18/02/11
171	27	44	Plan	1:100	Trench 44	SB	18/02/11
172	27	44	Section	1:10	North facing Section of [059]	SB	18/02/11
173	28	49	Plan	1:100	Trench 49	DOD	18/02/11
174	28	50	Plan	1:100	Trench 50	DOD	18/02/11
175	28	43	Plan	1:100	Trench 43	DOD	18/02/11
176	28	45	Plan	1:100	Trench 45	DOD	18/02/11
177	28	37	Plan	1:100	Trench 37	DOD	18/02/11
178	28	35	Plan	1:100	Trench 35	DOD	18/02/11
179	29	36	Plan	1:100	Trench 36	DOD	18/02/11
180	29	39	Plan	1:100	Trench 39	SB	21/02/11
181	29	33	Plan	1:100	Trench 33	SB	21/02/11
182	29	34	Plan	1:100	Trench 34	SB	21/02/11
183	29	26	Plan	1:100	Trench 26	SB	21/02/11
184	29	27	Plan	1:100	Trench 27	SB	21/02/11
185	30	28	Plan	1:100	Trench 28	SB	21/02/11
186	30	29	Plan	1:100	Trench 29	SB	21/02/11

Drawing No.	Sheet No.	Area/ Trench	Drawing Type	Scale	Description	Drawn By	Date
187	30	30	Plan	1:100	Trench 30	SB	21/02/11
188	30	31	Plan	1:100	Trench 31	SB	21/02/11
189	30	126	Plan	1:100	Trench 126	SB	21/02/11
190	30	30	Plan	1:100	Trench 30	SB	21/02/11
191	30	32	Plan	1:100	Trench 32	SB	21/02/11
192	31	40	Plan	1:100	Trench 40	SB	21/02/11
193	31	41	Plan	1:100	Trench 41	SB	21/02/11
194	31	42	Plan	1:100	Trench 42	SB	21/02/11
195	31	38	Plan	1:100	Trench 38	SB	21/02/11
196	31	32	Section	1:10	NW Facing section of [041]	SB	21/02/11
197	31	130	Section	1:10	SW Facing section of [069]	SB	21/02/11
198	27	130	Section	1:10	WSW facing section of [066]	SB	22/02/11
199	27	130	Plan	1:100	Trench 130 extension	DG	22/02/11
200	27	130	Section	1:10	NW Facing section of [065]	LMC	22/02/11
201	28	57	Section	1:10	N Facing section of [053]	LMC	18/02/11
202	28	51	Section	1:10	N Facing section of [055] northern section	LMC	18/02/11
203	28	51	Section	1:10	S Facing section of [055] southern section	SB	18/02/11

Finds Register

Find No.	Area/ Trench	Context No.	Material Type	Description	Excavator	Date
1	20	001	Ceramic	1 sherd of reduced ware green glaze	DG	
2	38	064	Ceramic	Sherds of Prehistoric pottery incised and raised decoration	LMC	

3	57	001	Iron	Iron Nail	LMC	
4	38	064	Ceramic	Sherds of Prehistoric pottery incised and raised decoration	SB	
5	34	001	Ceramic	Sherd of Pottery	DG	
6	35	001	Ceramic	Sherd of Pottery	DG	
7	27	001	Ceramic	Sherd of Pottery	DG	
8	36	001	Ceramic	Sherd of Pottery	DG	
9		U/S	Ceramic	2 Sherds of Pottery	DG	
10	136	001	Ceramic	Modern white glazed pottery	LMC	

Sample No.	Context	Sample Type	Description / Quantity	Excavator	Date
1	010	Bulk	Fill of Pit [010] burnt bone and charcoal present	SB	28/01/11
2	050	Bulk	Fill [050]	LMC	16/02/11
3	055	Bulk	Fill of [055]	SB	18/02/11
4	064	Bulk	Secondary fill of posthole [041]	SB	21/02/11
5	069	Bulk	Fill of pit/posthole [069]	SB	22/02/11
6	065	Bulk	Fill of Pit [065]	LMC	22/02/11
7	066	Bulk	Fill of Pit [066]	DG	22/02/11

Appendix 2: Discovery & Excavation in Scotland

LOCAL AUTHORITY:	Fife
PROJECT TITLE/SITE NAME:	Kinloch House
PROJECT CODE:	RA10074
PARISH:	Collessie
NAME OF CONTRIBUTOR:	Douglas Gordon
NAME OF ORGANISATION:	Rathmell Archaeology Limited
TYPE(S) OF PROJECT:	Archaeological Evaluation
NMRS NO(S):	NO21SE 30, NO21SE 32, NO21SE 33, NO21SE 75
SITE/MONUMENT TYPE(S):	Pit Alignment, Souterrain, Pits, Post Holes, Ditches, Sunken Structures
SIGNIFICANT FINDS:	Post-Medieval Pottery; Neolithic Grooved Ware Pottery
NGR (2 letters, 6 figures)	NO2813 1178
START DATE (this season)	9th January 2011
END DATE (this season)	22 nd February 2011
PREVIOUS WORK (incl. DES ref.)	None
MAIN (NARRATIVE) DESCRIPTION: (may include information from other fields)	<p>A programme of archaeological evaluation works was carried out for Dalgleish Associates on behalf of Laird Aggregates Ltd to inform the development a proposal for mineral extraction on land to the south of Kinloch House, Collessie, Fife.</p> <p>The evaluation confirmed the presence of significant archaeological sites first identified from aerial photography within the proposed extraction area. The archaeological sites included an unenclosed settlement that may stretch from the Iron Age to the Pictish period on a knoll that would have been a peninsula into the drained Rossie Loch. This settlement includes a scheduled souterrain, evidence for post build structures and sunken structures with paved floors. Further north was a severely truncated pit alignment of uncertain, but probably prehistoric, origin. A number of dispersed pits or post-holes were also located, one of which contained numerous sherds of a Neolithic Grooved Ware pottery vessel.</p> <p>The findings of the evaluation have been used to inform a series of recommendations regarding the treatment of these sites within the design process for the proposed extraction.</p>
PROPOSED FUTURE WORK:	Yes
CAPTION(S) FOR ILLUSTRS:	None
SPONSOR OR FUNDING BODY:	Laird Aggregates Ltd
ADDRESS OF MAIN CONTRIBUTOR:	Unit 8 Ashgrove Workshops, Kilwinning, Ayrshire KA13 6PU
E MAIL:	contact@rathmell-arch.co.uk
ARCHIVE LOCATION (intended/deposited)	Report to Fife Council Archaeology Service and archive to RCAHMS Collections.

Contact Details

151. Rathmell Archaeology can be contacted at our Registered Office or through the web:

Rathmell Archaeology Ltd
Unit 8 Ashgrove Workshops
Kilwinning
Ayrshire
KA13 6PU

www.rathmell-arch.co.uk

t.: 01294 542848

f.: 01294 542849

e.: contact@rathmell-arch.co.uk

152. The Fife Council Archaeology Service can be contacted at their office or through the web:

Fife Council Archaeology Service
Development Services
Fife Council
Forth House
Abbotshall Road
North Street
Kirkcady
KY1 1RU

t : 01592 417912

f.: 01592 417641

e.: douglas.speirs@fife.gov.uk

End of Document