

AGGREGATE LEVY SUSTAINABILITY FUND  
MARINE AGGREGATES AND THE HISTORIC ENVIRONMENT

# ARTEFACTS FROM THE SEA

Catalogue of the Michael White Collection  
Forward & Records 1-150

*Wessex Archaeology*



Ref: 51541.05a

*March 2004*

**AGGREGATE LEVY SUSTAINABILITY FUND  
MARINE AGGREGATES AND THE HISTORIC ENVIRONMENT**

**ARTEFACTS FROM THE SEA**

**CATALOGUE OF THE MICHAEL WHITE COLLECTION  
FOREWORD AND RECORDS 1-150**

**Ref: 51541.05a  
March 2004**

prepared on behalf of

**English Heritage**  
Fort Cumberland  
Fort Cumberland Road  
Eastney  
Portsmouth  
PO4 9EF

by

**Wessex Archaeology**  
Portway House  
Old Sarum Park  
Salisbury  
SP4 6EB

**AGGREGATE LEVY SUSTAINABILITY FUND  
MARINE AGGREGATES AND THE HISTORIC ENVIRONMENT**

**ARTEFACTS FROM THE SEA**

**CATALOGUE OF THE MICHAEL WHITE COLLECTION**

**Ref: 51541.05a**

**Foreword**

This is a catalogue of part of the collection held by Michael White of Lymington, Hampshire. This catalogue contains a record of lithics and faunal remains that have been collected during the course of fishing activities in the Solent.

The catalogue was recorded by Wessex Archaeology as part of the Artefacts from the Sea project, which was funded through the Aggregate Levy Sustainability Fund by English Heritage. An aspect of this project was to record and archive museum and private collections, including material from the Solent. Mr White's holdings satisfy this definition, and it is anticipated that this catalogue will provide a valuable resource and tool for researching and managing the archaeological development of the Solent, as well as being a record of this collection in its own right.

The collection includes implements that date from the Lower Palaeolithic to the Bronze Age. The marine collection in particular is biased in favour of large core tools and easily recognisable blades, suggesting that there may be some bias in the collection method (predominantly oyster dredging) or non-identification of waste flakes. The core tools are principally tranchet adzes and picks, which are most likely to date to the Mesolithic period. The blades are more likely to span a broader range from the Late Glacial period to the Early Neolithic. Classifications of the blade component reflect this broad range, but have been allocated more precise dates where possible on technological grounds.

The catalogue is arranged by number, with a total of 298 entries. The numbers allocated by the collector in his original catalogue have been maintained (1-229). Artefacts that had not been previously recorded have been allocated a new number sequence, starting at 1000. Artefacts that are no longer in the collection but are noted in the original catalogue have been included with the original entry and a broad description of the tool type e.g. 'unspecified core tool'.

While the collection contains numerous artefacts of various material and date, it was decided, for the purpose of the present project, to record only lithic artefacts and faunal remains, and to give the highest priority to finds from the marine environment. Some catalogue entries are thus *groups* of unprovenanced, and usually undiagnostic flints from sites on land.

The artefacts were first identified and measured. Their provenance was established based on area names that had been used by Mr White. The areas were identified from

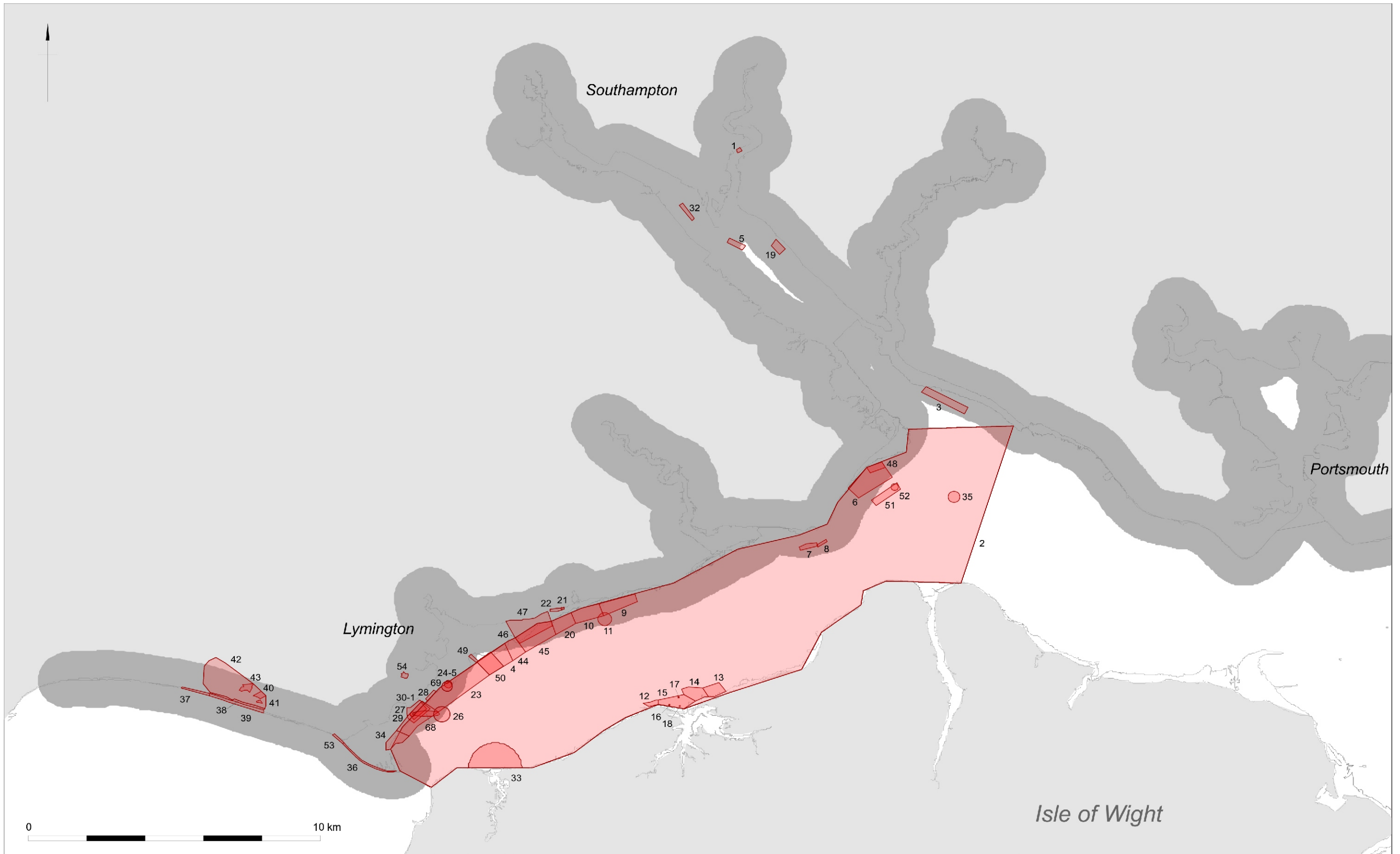
Admiralty Charts, and coordinates and the charted depth taken to further define the areas of collection. Where no location information was given the artefacts were recorded with no provenance. The areas are illustrated in the figure included in this catalogue.

The area names have been rationalised into 59 retrieval points or findspots. As these retrieval points are defined as areas of various sizes, with various definitions some are overlapping and some are refinements of larger areas. The findspots and the associated finds have been entered in the database of the broader project. This data will be transferred subsequently to the appropriate SMRs and to the NMR.

The lithics from these sites were recorded by Wessex Archaeology staff; Phil Harding; assisted by Mikkel H. Thomsen and photographer Elaine Wakefield. The faunal remains were photographed and the pictures presented to Stephanie Knight also of Wessex Archaeology and Andy Currant of the Natural History Museum for identification.

We would like to extend our very great thanks to Michael White and family for their tremendous assistance in the course of this project, and for their contribution to the archaeology of the Solent through their diligence in developing such a collection over the years.

This catalogue contains the holdings of faunal remains and lithics in the collection of Mr. Michael White on the 18 February 2004. Further information about Artefacts from the Sea is set out in the project report (Wessex Archaeology March 2004, ref: 51541.04).



Study area  
 Michael White's findspot areas

Digital data reproduced from Ordnance Survey data © Crown Copyright 2003 All rights reserved. Reference Number: 100020449.  
 This material is for client report only © Wessex Archaeology. No unauthorised reproduction.

|        |  |                  |     |
|--------|--|------------------|-----|
| Date:  | 28/01/04   | Revision Number: | 0   |
| Scale: | 1:125,000  | Illustrator:     | KMN |
| Path:  | W:\51541\Drawing Office\Report Figures\Year 2\04_01\ |                  |     |

Interpretation of Michael White's findspot areas based on place names and personal observation.

# Catalogue as of 18 February 2004

CAT. NO.  TYPE  MATERIAL   
DATE FROM  TO

PROVENANCE    
CHART NO.   
PROVENANCE 1   
PROVENANCE 2   
PROVENANCE 3

FINDER NAME   
FIND CAUSE   
FIND DATE

COMPLETENESS   
CONDITION   
PATINATION

LENGTH  WIDTH  THICKNESS  WEIGHT

DESCRIPTION

PHOTO NO.  PHOTOGRAPHER



CAT. NO.  TYPE  MATERIAL   
DATE FROM  TO

PROVENANCE    
CHART NO.   
PROVENANCE 1   
PROVENANCE 2   
PROVENANCE 3

FINDER NAME   
FIND CAUSE   
FIND DATE

COMPLETENESS   
CONDITION   
PATINATION

LENGTH  WIDTH  THICKNESS  WEIGHT

DESCRIPTION

PHOTO NO.  PHOTOGRAPHER



CAT. NO.  TYPE  MATERIAL   
DATE FROM  TO

PROVENANCE    
CHART NO.   
PROVENANCE 1   
PROVENANCE 2   
PROVENANCE 3

FINDER NAME   
FIND CAUSE   
FIND DATE

COMPLETENESS   
CONDITION   
PATINATION

LENGTH  WIDTH  THICKNESS  WEIGHT

DESCRIPTION

PHOTO NO.  PHOTOGRAPHER





CAT. NO.  TYPE  MATERIAL   
DATE FROM  TO

PROVENANCE    
CHART NO.   
PROVENANCE 1   
PROVENANCE 2   
PROVENANCE 3

FINDER NAME   
FIND CAUSE   
FIND DATE

COMPLETENESS   
CONDITION   
PATINATION

LENGTH  WIDTH  THICKNESS  WEIGHT

DESCRIPTION

PHOTO NO.  PHOTOGRAPHER



CAT. NO.  TYPE  MATERIAL   
DATE FROM  TO

PROVENANCE    
CHART NO.   
PROVENANCE 1   
PROVENANCE 2   
PROVENANCE 3

FINDER NAME   
FIND CAUSE   
FIND DATE

COMPLETENESS   
CONDITION

PATINATION  
LENGTH  WIDTH  THICKNESS  WEIGHT   
DESCRIPTION

PHOTO NO. PHOTOGRAPHER

|              |   |              |                           |           |            |
|--------------|---|--------------|---------------------------|-----------|------------|
| CAT. NO.     | 6   | TYPE         | Perforated shafthole adze | MATERIAL  | ?Sandstone |
| DATE FROM    | Neolithic   | TO           | Early Bronze Age          |           |            |
| PROVENANCE   | 2 Solent  |              |                           |           |            |
| CHART NO.    |   |              |                           |           |            |
| PROVENANCE 1 | Solent  |              |                           |           |            |
| PROVENANCE 2 |   |              |                           |           |            |
| PROVENANCE 3 |   |              |                           |           |            |
| FINDER NAME  | Roger Bysan   |              |                           |           |            |
| FIND CAUSE   | oyster dredging   |              |                           |           |            |
| FIND DATE    | 1983  |              |                           |           |            |
| COMPLETENESS | Yes   |              |                           |           |            |
| CONDITION    | Sharp   |              |                           |           |            |
| PATINATION   |   |              |                           |           |            |
| LENGTH       | 137   | WIDTH        | 52                        | THICKNESS | 26         |
| WEIGHT       | 270   |              |                           |           |            |
| DESCRIPTION  | Plano convex ground shafthole adze with 'hour glass' perforation. |              |                           |           |            |
| PHOTO NO.    | R0010045  | PHOTOGRAPHER | MHT                       |           |            |



CAT. NO.  TYPE  MATERIAL   
DATE FROM  TO

PROVENANCE    
CHART NO.   
PROVENANCE 1   
PROVENANCE 2  
PROVENANCE 3

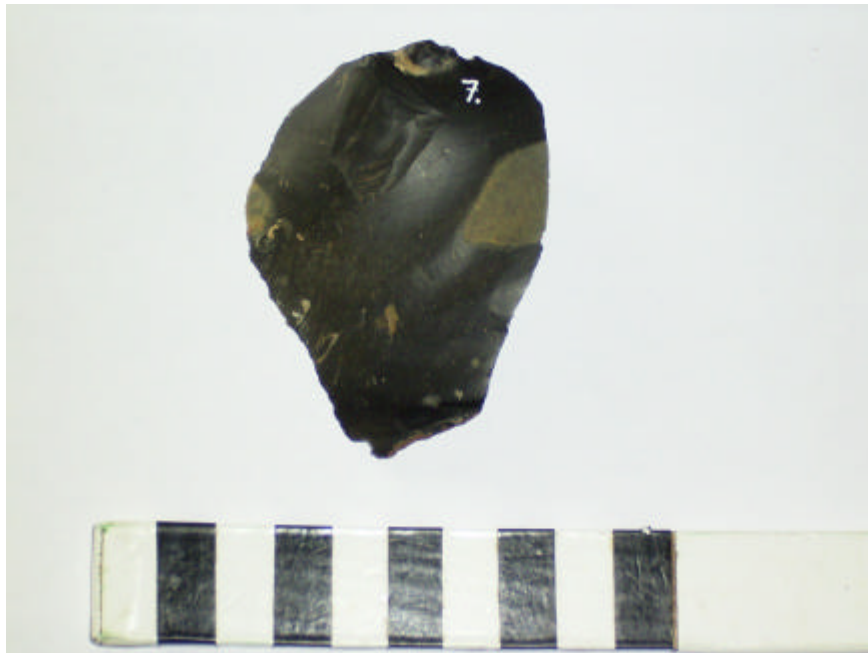
FINDER NAME   
FIND CAUSE   
FIND DATE

COMPLETENESS   
CONDITION   
PATINATION

LENGTH  WIDTH  THICKNESS  WEIGHT

DESCRIPTION

PHOTO NO.  PHOTOGRAPHER



|              |   |                               |               |           |                     |
|--------------|---|-------------------------------|---------------|-----------|---------------------|
| CAT. NO.     | 8   | TYPE                          | Pebble hammer | MATERIAL  | Sandstone/quartzite |
| DATE FROM    | Mesolithic  | TO                            | Bronze Age    |           |                     |
| PROVENANCE   | 7   | off Stone Point, Lepe, Solent |               |           |                     |
| CHART NO.    | 2040  |                               |               |           |                     |
| PROVENANCE 1 | off Stone Point   |                               |               |           |                     |
| PROVENANCE 2 | Lepe  |                               |               |           |                     |
| PROVENANCE 3 | Eastern Solent  |                               |               |           |                     |
| FINDER NAME  |   |                               |               |           |                     |
| FIND CAUSE   | oyster dredging   |                               |               |           |                     |
| FIND DATE    |   |                               |               |           |                     |
| COMPLETENESS | Yes   |                               |               |           |                     |
| CONDITION    | Sharp   |                               |               |           |                     |
| PATINATION   | Unpatinated   |                               |               |           |                     |
| LENGTH       | 92  | WIDTH                         | 72            | THICKNESS | 31                  |
| WEIGHT       | 311   |                               |               |           |                     |
| DESCRIPTION  | Hour glass perforation. Hammering at both ends. Most likely Mesolithic. |                               |               |           |                     |
| PHOTO NO.    | R0010047  | PHOTOGRAPHER                  | MHT           |           |                     |



CAT. NO.  TYPE  MATERIAL   
DATE FROM  TO

PROVENANCE    
CHART NO.   
PROVENANCE 1   
PROVENANCE 2   
PROVENANCE 3

FINDER NAME   
FIND CAUSE   
FIND DATE

COMPLETENESS   
CONDITION   
PATINATION

LENGTH  WIDTH  THICKNESS  WEIGHT

DESCRIPTION

PHOTO NO.  PHOTOGRAPHER



CAT. NO.  TYPE  MATERIAL   
DATE FROM  TO

PROVENANCE    
CHART NO.   
PROVENANCE 1   
PROVENANCE 2   
PROVENANCE 3

FINDER NAME   
FIND CAUSE   
FIND DATE

COMPLETENESS   
CONDITION   
PATINATION

LENGTH  WIDTH  THICKNESS  WEIGHT

DESCRIPTION

PHOTO NO.  PHOTOGRAPHER



|              |  |  |              |           |       |
|--------------|--|--|--------------|-----------|-------|
| CAT. NO.     | 11   | TYPE   | Tranchet axe | MATERIAL  | Flint |
| DATE FROM    | Mesolithic   | TO   | Mesolithic   |           |       |
| PROVENANCE   | 16   | btw. Hamstead Point and Newtown River mouth, IOW, Solent |              |           |       |
| CHART NO.    | 2021   |  |              |           |       |
| PROVENANCE 1 | off Newtown  |  |              |           |       |
| PROVENANCE 2 | IOW  |  |              |           |       |
| PROVENANCE 3 | Solent   |  |              |           |       |
| FINDER NAME  |  |  |              |           |       |
| FIND CAUSE   | oyster dredging  |  |              |           |       |
| FIND DATE    |  |  |              |           |       |
| COMPLETENESS | Yes  |  |              |           |       |
| CONDITION    | Sharp  |  |              |           |       |
| PATINATION   | Unpatinated  |  |              |           |       |
| LENGTH       | 192  | WIDTH  | 59           | THICKNESS | 59    |
| WEIGHT       | 744  |  |              |           |       |
| DESCRIPTION  | Thick diamond section. Grey cherty flint with cherty inclusions. Single tranchet blow. |  |              |           |       |
| PHOTO NO.    | R0010050   | PHOTOGRAPHER   | MHT          |           |       |





CAT. NO.  TYPE  MATERIAL   
DATE FROM  TO

PROVENANCE    
CHART NO.   
PROVENANCE 1   
PROVENANCE 2   
PROVENANCE 3

FINDER NAME   
FIND CAUSE   
FIND DATE

COMPLETENESS   
CONDITION   
PATINATION

LENGTH  WIDTH  THICKNESS  WEIGHT

DESCRIPTION

PHOTO NO.  PHOTOGRAPHER



CAT. NO.  TYPE  MATERIAL   
DATE FROM  TO

PROVENANCE    
CHART NO.   
PROVENANCE 1   
PROVENANCE 2   
PROVENANCE 3

FINDER NAME   
FIND CAUSE   
FIND DATE

COMPLETENESS   
CONDITION   
PATINATION

LENGTH  WIDTH  THICKNESS  WEIGHT

DESCRIPTION

PHOTO NO.  PHOTOGRAPHER



CAT. NO.  TYPE  MATERIAL   
DATE FROM  TO

PROVENANCE    
CHART NO.   
PROVENANCE 1   
PROVENANCE 2   
PROVENANCE 3

FINDER NAME   
FIND CAUSE   
FIND DATE

COMPLETENESS   
CONDITION   
PATINATION

LENGTH  WIDTH  THICKNESS  WEIGHT

DESCRIPTION

PHOTO NO.  PHOTOGRAPHER



|              |   |                               |                       |           |              |
|--------------|---|-------------------------------|-----------------------|-----------|--------------|
| CAT. NO.     | 15  | TYPE                          | Unspecified core tool | MATERIAL  | Flint        |
| DATE FROM    | Mesolithic  | TO                            | Mesolithic            |           |              |
| PROVENANCE   | 19  | off Netley, Southampton Water |                       |           |              |
| CHART NO.    | 2041  |                               |                       |           |              |
| PROVENANCE 1 | off Netley Shore  |                               |                       |           |              |
| PROVENANCE 2 | Southampton Water   |                               |                       |           |              |
| PROVENANCE 3 |   |                               |                       |           |              |
| FINDER NAME  |   |                               |                       |           |              |
| FIND CAUSE   | oyster dredging   |                               |                       |           |              |
| FIND DATE    |   |                               |                       |           |              |
| COMPLETENESS | Yes   |                               |                       |           |              |
| CONDITION    |   |                               |                       |           |              |
| PATINATION   |   |                               |                       |           |              |
| LENGTH       | 165   | WIDTH                         | 56                    | THICKNESS | 39           |
| WEIGHT       |   |                               |                       |           |              |
| DESCRIPTION  | Mottled grey (dimensions and description after MW catalogue; not to be found in collection) |                               |                       |           |              |
| PHOTO NO.    |   |                               |                       |           | PHOTOGRAPHER |

CAT. NO.  TYPE  MATERIAL   
DATE FROM  TO

PROVENANCE    
CHART NO.   
PROVENANCE 1   
PROVENANCE 2   
PROVENANCE 3

FINDER NAME   
FIND CAUSE   
FIND DATE

COMPLETENESS   
CONDITION   
PATINATION

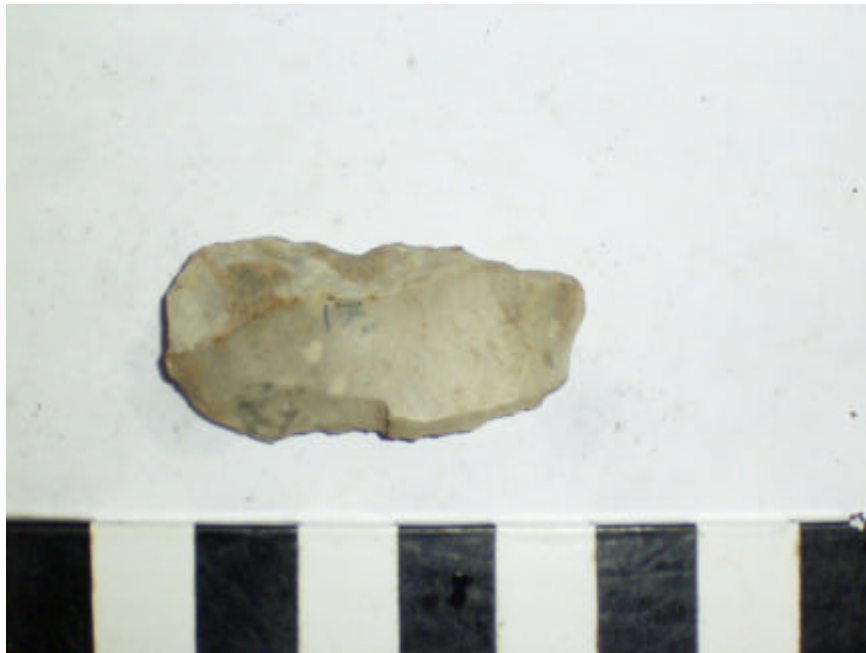
LENGTH  WIDTH  THICKNESS  WEIGHT

DESCRIPTION

PHOTO NO.  PHOTOGRAPHER



|              |   |              |           |           |       |
|--------------|---|--------------|-----------|-----------|-------|
| CAT. NO.     | 17  | TYPE         | Blade     | MATERIAL  | Flint |
| DATE FROM    | Late Glacial  | TO           | Neolithic |           |       |
| PROVENANCE   | 2 Solent  |              |           |           |       |
| CHART NO.    |   |              |           |           |       |
| PROVENANCE 1 | Solent  |              |           |           |       |
| PROVENANCE 2 |   |              |           |           |       |
| PROVENANCE 3 |   |              |           |           |       |
| FINDER NAME  |   |              |           |           |       |
| FIND CAUSE   | oyster dredging   |              |           |           |       |
| FIND DATE    |   |              |           |           |       |
| COMPLETENESS | Yes   |              |           |           |       |
| CONDITION    | Slightly rolled   |              |           |           |       |
| PATINATION   | Unpatinated   |              |           |           |       |
| LENGTH       | 40  | WIDTH        | 20        | THICKNESS | 7     |
| WEIGHT       | 6   |              |           |           |       |
| DESCRIPTION  | Undiagnostic blade. Probably more typical of Later Prehistoric (Neolithic). Hard hammer struck. |              |           |           |       |
| PHOTO NO.    | R0010265  | PHOTOGRAPHER | MHT       |           |       |



CAT. NO.  TYPE  MATERIAL   
DATE FROM  TO

PROVENANCE    
CHART NO.   
PROVENANCE 1   
PROVENANCE 2   
PROVENANCE 3

FINDER NAME   
FIND CAUSE   
FIND DATE

COMPLETENESS   
CONDITION   
PATINATION

LENGTH  WIDTH  THICKNESS  WEIGHT

DESCRIPTION

PHOTO NO.  PHOTOGRAPHER



|              |   |        |              |           |              |
|--------------|---|--------|--------------|-----------|--------------|
| CAT. NO.     | 19  | TYPE   | Worked flint | MATERIAL  | Flint        |
| DATE FROM    | Prehistoric   | TO     | Prehistoric  |           |              |
| PROVENANCE   | 2   | Solent |              |           |              |
| CHART NO.    |   |        |              |           |              |
| PROVENANCE 1 | Solent  |        |              |           |              |
| PROVENANCE 2 |   |        |              |           |              |
| PROVENANCE 3 |   |        |              |           |              |
| FINDER NAME  |   |        |              |           |              |
| FIND CAUSE   | oyster dredging   |        |              |           |              |
| FIND DATE    |   |        |              |           |              |
| COMPLETENESS | Yes   |        |              |           |              |
| CONDITION    |   |        |              |           |              |
| PATINATION   |   |        |              |           |              |
| LENGTH       | 61  | WIDTH  | 18           | THICKNESS |              |
| WEIGHT       |   |        |              |           |              |
| DESCRIPTION  | Blade/flake (dimensions and description after MW catalogue;<br>not to be found in collection) |        |              |           |              |
| PHOTO NO.    |   |        |              |           | PHOTOGRAPHER |
|              |   |        |              |           |              |



CAT. NO.  TYPE  MATERIAL   
DATE FROM  TO

PROVENANCE    
CHART NO.   
PROVENANCE 1   
PROVENANCE 2   
PROVENANCE 3

FINDER NAME   
FIND CAUSE   
FIND DATE

COMPLETENESS   
CONDITION   
PATINATION

LENGTH  WIDTH  THICKNESS  WEIGHT

DESCRIPTION

PHOTO NO.  PHOTOGRAPHER



CAT. NO.  TYPE  MATERIAL   
DATE FROM  TO

PROVENANCE    
CHART NO.   
PROVENANCE 1   
PROVENANCE 2   
PROVENANCE 3

FINDER NAME   
FIND CAUSE   
FIND DATE

COMPLETENESS   
CONDITION   
PATINATION

LENGTH  WIDTH  THICKNESS  WEIGHT

DESCRIPTION

PHOTO NO.  PHOTOGRAPHER



CAT. NO.  TYPE  MATERIAL   
DATE FROM  TO

PROVENANCE    
CHART NO.   
PROVENANCE 1   
PROVENANCE 2   
PROVENANCE 3

FINDER NAME   
FIND CAUSE   
FIND DATE

COMPLETENESS   
CONDITION   
PATINATION

LENGTH  WIDTH  THICKNESS  WEIGHT

DESCRIPTION

PHOTO NO.  PHOTOGRAPHER



|              |  |       |              |             |              |
|--------------|--|-------|--------------|-------------|--------------|
| CAT. NO.     | 23   | TYPE  | Worked flint | MATERIAL    | Flint        |
| DATE FROM    | Prehistoric  |       | TO           | Prehistoric |              |
| PROVENANCE   | 2 Solent   |       |              |             |              |
| CHART NO.    |  |       |              |             |              |
| PROVENANCE 1 | Solent   |       |              |             |              |
| PROVENANCE 2 |  |       |              |             |              |
| PROVENANCE 3 |  |       |              |             |              |
| FINDER NAME  |  |       |              |             |              |
| FIND CAUSE   | oyster dredging  |       |              |             |              |
| FIND DATE    |  |       |              |             |              |
| COMPLETENESS | Yes  |       |              |             |              |
| CONDITION    |  |       |              |             |              |
| PATINATION   |  |       |              |             |              |
| LENGTH       | 91   | WIDTH | 35           | THICKNESS   |              |
| WEIGHT       |  |       |              |             |              |
| DESCRIPTION  | Blade/flake (dimensions and description after MW catalogue; not to be found in collection) |       |              |             |              |
| PHOTO NO.    |  |       |              |             | PHOTOGRAPHER |

CAT. NO.  TYPE  MATERIAL   
DATE FROM  TO

PROVENANCE    
CHART NO.   
PROVENANCE 1   
PROVENANCE 2   
PROVENANCE 3

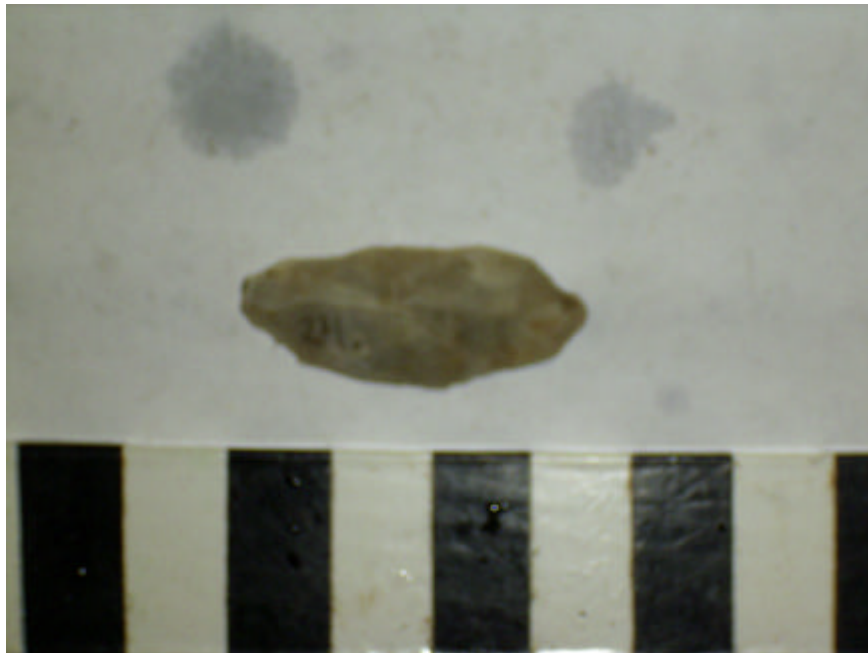
FINDER NAME   
FIND CAUSE   
FIND DATE

COMPLETENESS   
CONDITION   
PATINATION

LENGTH  WIDTH  THICKNESS  WEIGHT

DESCRIPTION

PHOTO NO.  PHOTOGRAPHER



CAT. NO.  TYPE  MATERIAL   
DATE FROM  TO

PROVENANCE    
CHART NO.   
PROVENANCE 1   
PROVENANCE 2   
PROVENANCE 3

FINDER NAME   
FIND CAUSE   
FIND DATE

COMPLETENESS   
CONDITION   
PATINATION

LENGTH  WIDTH  THICKNESS  WEIGHT   
DESCRIPTION

PHOTO NO.  PHOTOGRAPHER



CAT. NO.  TYPE  MATERIAL   
DATE FROM  TO

PROVENANCE    
CHART NO.   
PROVENANCE 1   
PROVENANCE 2   
PROVENANCE 3

FINDER NAME   
FIND CAUSE   
FIND DATE

COMPLETENESS   
CONDITION   
PATINATION

LENGTH  WIDTH  THICKNESS  WEIGHT

DESCRIPTION

PHOTO NO.  PHOTOGRAPHER



CAT. NO.  TYPE  MATERIAL   
DATE FROM  TO

PROVENANCE    
CHART NO.   
PROVENANCE 1

PROVENANCE 2  
PROVENANCE 3

FINDER NAME  
FIND CAUSE   
FIND DATE

COMPLETENESS

CONDITION  
PATINATION

LENGTH  WIDTH  THICKNESS  WEIGHT

DESCRIPTION

PHOTO NO. PHOTOGRAPHER



|              |  |              |           |           |       |
|--------------|--|--------------|-----------|-----------|-------|
| CAT. NO.     | 28   | TYPE         | Blade     | MATERIAL  | Flint |
| DATE FROM    | Late Glacial   | TO           | Neolithic |           |       |
| PROVENANCE   | 2 Solent   |              |           |           |       |
| CHART NO.    |  |              |           |           |       |
| PROVENANCE 1 | Solent   |              |           |           |       |
| PROVENANCE 2 |  |              |           |           |       |
| PROVENANCE 3 |  |              |           |           |       |
| FINDER NAME  |  |              |           |           |       |
| FIND CAUSE   | oyster dredging  |              |           |           |       |
| FIND DATE    |  |              |           |           |       |
| COMPLETENESS | Broken   |              |           |           |       |
| CONDITION    | Sharp/slightly rolled  |              |           |           |       |
| PATINATION   | Unpatinated  |              |           |           |       |
| LENGTH       | 57   | WIDTH        | 21        | THICKNESS | 6     |
| WEIGHT       | 9  |              |           |           |       |
| DESCRIPTION  | Tertiary blade. Both tips absent. Possible use damage, although provenance should be remembered. |              |           |           |       |
| PHOTO NO.    | R0010147   | PHOTOGRAPHER | MHT       |           |       |



CAT. NO.  TYPE  MATERIAL   
DATE FROM  TO

PROVENANCE    
CHART NO.   
PROVENANCE 1   
PROVENANCE 2   
PROVENANCE 3

FINDER NAME   
FIND CAUSE   
FIND DATE

COMPLETENESS   
CONDITION   
PATINATION

LENGTH  WIDTH  THICKNESS  WEIGHT

DESCRIPTION

PHOTO NO.  PHOTOGRAPHER



CAT. NO.  TYPE  MATERIAL   
DATE FROM  TO

PROVENANCE    
CHART NO.   
PROVENANCE 1   
PROVENANCE 2   
PROVENANCE 3

FINDER NAME   
FIND CAUSE   
FIND DATE

COMPLETENESS   
CONDITION   
PATINATION

LENGTH  WIDTH  THICKNESS  WEIGHT

DESCRIPTION

PHOTO NO.  PHOTOGRAPHER



CAT. NO.  TYPE  MATERIAL   
DATE FROM  TO

PROVENANCE    
CHART NO.   
PROVENANCE 1   
PROVENANCE 2   
PROVENANCE 3

FINDER NAME   
FIND CAUSE   
FIND DATE

COMPLETENESS   
CONDITION   
PATINATION

LENGTH  WIDTH  THICKNESS  WEIGHT   
DESCRIPTION

PHOTO NO.  PHOTOGRAPHER



CAT. NO.  TYPE  MATERIAL   
DATE FROM  TO

PROVENANCE    
CHART NO.   
PROVENANCE 1   
PROVENANCE 2   
PROVENANCE 3

FINDER NAME   
FIND CAUSE   
FIND DATE

COMPLETENESS   
CONDITION   
PATINATION

LENGTH  WIDTH  THICKNESS  WEIGHT

DESCRIPTION

PHOTO NO.  PHOTOGRAPHER



|              |  |   |                       |           |              |
|--------------|--|---|-----------------------|-----------|--------------|
| CAT. NO.     | 33   | TYPE  | Unspecified core tool | MATERIAL  | Flint        |
| DATE FROM    | Mesolithic   | TO  | Mesolithic            |           |              |
| PROVENANCE   | 23   | btw. Pennington Sewer and Lymington River, Solent |                       |           |              |
| CHART NO.    | 2040   |   |                       |           |              |
| PROVENANCE 1 | btw. Pennington Sewer and Lymington River  |   |                       |           |              |
| PROVENANCE 2 | Solent   |   |                       |           |              |
| PROVENANCE 3 |  |   |                       |           |              |
| FINDER NAME  |  |   |                       |           |              |
| FIND CAUSE   | oyster dredging  |   |                       |           |              |
| FIND DATE    |  |   |                       |           |              |
| COMPLETENESS | Yes  |   |                       |           |              |
| CONDITION    |  |   |                       |           |              |
| PATINATION   |  |   |                       |           |              |
| LENGTH       | 153  | WIDTH   | 56                    | THICKNESS | 33           |
| WEIGHT       |  |   |                       |           |              |
| DESCRIPTION  | Fawn coloured (dimensions and description after MW catalogue; not to be found in collection) |   |                       |           |              |
| PHOTO NO.    |  |   |                       |           | PHOTOGRAPHER |
|              |  |   |                       |           |              |

|              |  |   |              |           |       |
|--------------|--|---|--------------|-----------|-------|
| CAT. NO.     | 34   | TYPE  | Tranchet axe | MATERIAL  | Flint |
| DATE FROM    | Mesolithic   | TO  | Mesolithic   |           |       |
| PROVENANCE   | 23   | btw. Pennington Sewer and Lymington River, Solent |              |           |       |
| CHART NO.    | 2040   |   |              |           |       |
| PROVENANCE 1 | btw. Pennington Sewer and Lymington River  |   |              |           |       |
| PROVENANCE 2 | Solent   |   |              |           |       |
| PROVENANCE 3 |  |   |              |           |       |
| FINDER NAME  |  |   |              |           |       |
| FIND CAUSE   | oyster dredging  |   |              |           |       |
| FIND DATE    |  |   |              |           |       |
| COMPLETENESS | Yes  |   |              |           |       |
| CONDITION    | Sharp  |   |              |           |       |
| PATINATION   | Unpatinated  |   |              |           |       |
| LENGTH       | 124  | WIDTH   | 49           | THICKNESS | 35    |
| WEIGHT       | 270  |   |              |           |       |
| DESCRIPTION  | Thick, coarse sectioned axe with double tranchet blow, made on elongated gravel nodule, partial cortex butt. |   |              |           |       |
| PHOTO NO.    | R0010086   | PHOTOGRAPHER                                      | MHT          |           |       |



|              |  |                                 |                       |           |              |
|--------------|--|---------------------------------|-----------------------|-----------|--------------|
| CAT. NO.     | 35   | TYPE                            | Unspecified core tool | MATERIAL  | Flint        |
| DATE FROM    | Mesolithic   | TO                              | Mesolithic            |           |              |
| PROVENANCE   | 12   | off Hamstead Ledge, IOW, Solent |                       |           |              |
| CHART NO.    | 2040   |                                 |                       |           |              |
| PROVENANCE 1 | off Hamstead Ledge   |                                 |                       |           |              |
| PROVENANCE 2 | Newtown  |                                 |                       |           |              |
| PROVENANCE 3 | IOW  |                                 |                       |           |              |
| FINDER NAME  |  |                                 |                       |           |              |
| FIND CAUSE   | oyster dredging  |                                 |                       |           |              |
| FIND DATE    |  |                                 |                       |           |              |
| COMPLETENESS | Yes  |                                 |                       |           |              |
| CONDITION    |  |                                 |                       |           |              |
| PATINATION   |  |                                 |                       |           |              |
| LENGTH       | 163  | WIDTH                           | 63                    | THICKNESS | 37           |
| WEIGHT       |  |                                 |                       |           |              |
| DESCRIPTION  | Black (dimensions and description after MW catalogue; not to be found in collection) |                                 |                       |           |              |
| PHOTO NO.    |  |                                 |                       |           | PHOTOGRAPHER |
|              |  |                                 |                       |           |              |



CAT. NO.  TYPE  MATERIAL   
DATE FROM  TO

PROVENANCE    
CHART NO.   
PROVENANCE 1   
PROVENANCE 2   
PROVENANCE 3

FINDER NAME   
FIND CAUSE   
FIND DATE

COMPLETENESS   
CONDITION   
PATINATION

LENGTH  WIDTH  THICKNESS  WEIGHT

DESCRIPTION

PHOTO NO.  PHOTOGRAPHER



CAT. NO.  TYPE  MATERIAL   
DATE FROM  TO

PROVENANCE    
CHART NO.   
PROVENANCE 1   
PROVENANCE 2   
PROVENANCE 3

FINDER NAME  
FIND CAUSE   
FIND DATE

COMPLETENESS   
CONDITION   
PATINATION

LENGTH  WIDTH  THICKNESS  WEIGHT

DESCRIPTION

PHOTO NO.  PHOTOGRAPHER



CAT. NO.  TYPE  MATERIAL   
DATE FROM  TO

PROVENANCE    
CHART NO.   
PROVENANCE 1   
PROVENANCE 2   
PROVENANCE 3

FINDER NAME  
FIND CAUSE   
FIND DATE

COMPLETENESS   
CONDITION   
PATINATION

LENGTH  WIDTH  THICKNESS  WEIGHT

DESCRIPTION

PHOTO NO. PHOTOGRAPHER

CAT. NO.  TYPE  MATERIAL   
 DATE FROM  TO

PROVENANCE    
 CHART NO.   
 PROVENANCE 1   
 PROVENANCE 2   
 PROVENANCE 3

FINDER NAME   
 FIND CAUSE   
 FIND DATE

COMPLETENESS   
 CONDITION   
 PATINATION

LENGTH  WIDTH  THICKNESS  WEIGHT

DESCRIPTION

PHOTO NO.  PHOTOGRAPHER



CAT. NO.  TYPE  MATERIAL   
DATE FROM  TO

PROVENANCE    
CHART NO.   
PROVENANCE 1   
PROVENANCE 2   
PROVENANCE 3

FINDER NAME   
FIND CAUSE   
FIND DATE

COMPLETENESS   
CONDITION   
PATINATION

LENGTH  WIDTH  THICKNESS  WEIGHT

DESCRIPTION

PHOTO NO.  PHOTOGRAPHER



CAT. NO.  TYPE  MATERIAL   
DATE FROM  TO

PROVENANCE    
CHART NO.   
PROVENANCE 1   
PROVENANCE 2   
PROVENANCE 3

FINDER NAME   
FIND CAUSE   
FIND DATE

COMPLETENESS   
CONDITION   
PATINATION

LENGTH  WIDTH  THICKNESS  WEIGHT

DESCRIPTION

PHOTO NO.  PHOTOGRAPHER



CAT. NO.  TYPE  MATERIAL   
 DATE FROM  TO

PROVENANCE    
 CHART NO.   
 PROVENANCE 1   
 PROVENANCE 2   
 PROVENANCE 3

FINDER NAME   
 FIND CAUSE   
 FIND DATE

COMPLETENESS   
 CONDITION   
 PATINATION

LENGTH  WIDTH  THICKNESS  WEIGHT

DESCRIPTION

PHOTO NO.  PHOTOGRAPHER



CAT. NO.  TYPE  MATERIAL   
DATE FROM  TO

PROVENANCE    
CHART NO.   
PROVENANCE 1   
PROVENANCE 2   
PROVENANCE 3

FINDER NAME   
FIND CAUSE   
FIND DATE

COMPLETENESS   
CONDITION   
PATINATION

LENGTH  WIDTH  THICKNESS  WEIGHT   
DESCRIPTION

PHOTO NO.  PHOTOGRAPHER





CAT. NO.  TYPE  MATERIAL   
 DATE FROM  TO

PROVENANCE    
 CHART NO.   
 PROVENANCE 1   
 PROVENANCE 2   
 PROVENANCE 3

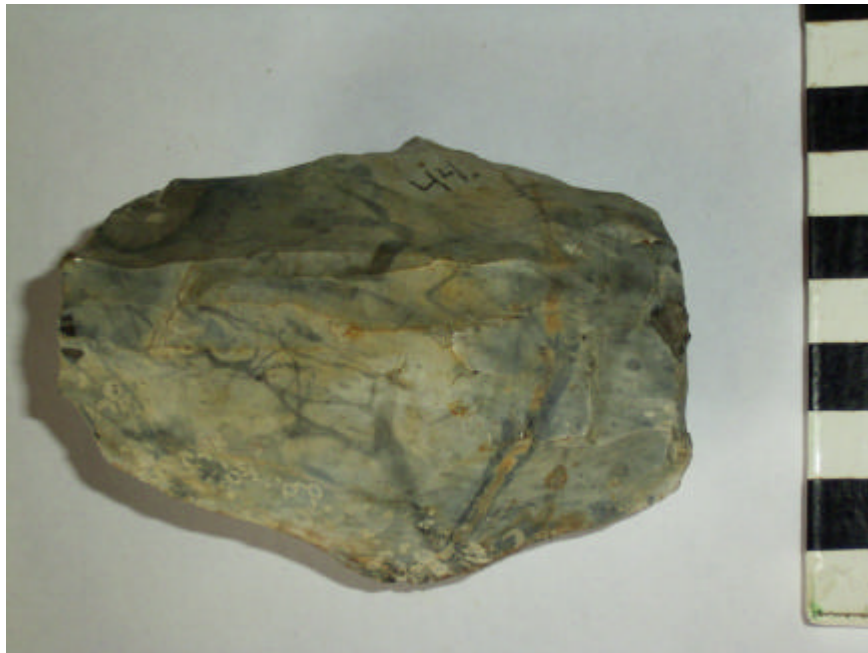
FINDER NAME   
 FIND CAUSE   
 FIND DATE

COMPLETENESS   
 CONDITION   
 PATINATION

LENGTH  WIDTH  THICKNESS  WEIGHT

DESCRIPTION

PHOTO NO.  PHOTOGRAPHER



CAT. NO.  TYPE  MATERIAL   
DATE FROM  TO

PROVENANCE    
CHART NO.   
PROVENANCE 1   
PROVENANCE 2   
PROVENANCE 3

FINDER NAME   
FIND CAUSE   
FIND DATE

COMPLETENESS   
CONDITION   
PATINATION

LENGTH  WIDTH  THICKNESS  WEIGHT

DESCRIPTION

PHOTO NO.  PHOTOGRAPHER



CAT. NO.  TYPE  MATERIAL   
DATE FROM  TO

PROVENANCE    
CHART NO.   
PROVENANCE 1   
PROVENANCE 2   
PROVENANCE 3

FINDER NAME  
FIND CAUSE   
FIND DATE

COMPLETENESS

CONDITION

PATINATION

LENGTH  WIDTH  THICKNESS  WEIGHT

DESCRIPTION

PHOTO NO. PHOTOGRAPHER

CAT. NO.  TYPE  MATERIAL   
DATE FROM  TO

PROVENANCE    
CHART NO.   
PROVENANCE 1   
PROVENANCE 2   
PROVENANCE 3

FINDER NAME   
FIND CAUSE   
FIND DATE

COMPLETENESS   
CONDITION   
PATINATION

LENGTH  WIDTH  THICKNESS  WEIGHT

DESCRIPTION

PHOTO NO.  PHOTOGRAPHER



CAT. NO.  TYPE  MATERIAL   
 DATE FROM  TO

PROVENANCE    
 CHART NO.   
 PROVENANCE 1   
 PROVENANCE 2   
 PROVENANCE 3

FINDER NAME   
 FIND CAUSE   
 FIND DATE

COMPLETENESS   
 CONDITION   
 PATINATION

LENGTH  WIDTH  THICKNESS  WEIGHT

DESCRIPTION

PHOTO NO.  PHOTOGRAPHER



CAT. NO.  TYPE  MATERIAL   
DATE FROM  TO

PROVENANCE    
CHART NO.   
PROVENANCE 1   
PROVENANCE 2   
PROVENANCE 3

FINDER NAME   
FIND CAUSE   
FIND DATE

COMPLETENESS   
CONDITION   
PATINATION

LENGTH  WIDTH  THICKNESS  WEIGHT   
DESCRIPTION

PHOTO NO.  PHOTOGRAPHER



CAT. NO.  TYPE  MATERIAL   
 DATE FROM  TO

PROVENANCE    
 CHART NO.   
 PROVENANCE 1   
 PROVENANCE 2   
 PROVENANCE 3

FINDER NAME   
 FIND CAUSE   
 FIND DATE

COMPLETENESS   
 CONDITION   
 PATINATION

LENGTH  WIDTH  THICKNESS  WEIGHT   
 DESCRIPTION

PHOTO NO.  PHOTOGRAPHER



CAT. NO.  TYPE  MATERIAL   
DATE FROM  TO

PROVENANCE    
CHART NO.   
PROVENANCE 1   
PROVENANCE 2   
PROVENANCE 3

FINDER NAME   
FIND CAUSE   
FIND DATE

COMPLETENESS

CONDITION   
PATINATION

LENGTH  WIDTH  THICKNESS  WEIGHT

DESCRIPTION

PHOTO NO.  PHOTOGRAPHER



CAT. NO.  TYPE  MATERIAL   
DATE FROM  TO

PROVENANCE    
CHART NO.   
PROVENANCE 1   
PROVENANCE 2   
PROVENANCE 3

FINDER NAME   
FIND CAUSE   
FIND DATE

COMPLETENESS   
CONDITION   
PATINATION

LENGTH  WIDTH  THICKNESS  WEIGHT

DESCRIPTION

PHOTO NO.  PHOTOGRAPHER



CAT. NO.  TYPE  MATERIAL   
DATE FROM  TO

PROVENANCE   
CHART NO.   
PROVENANCE 1   
PROVENANCE 2   
PROVENANCE 3

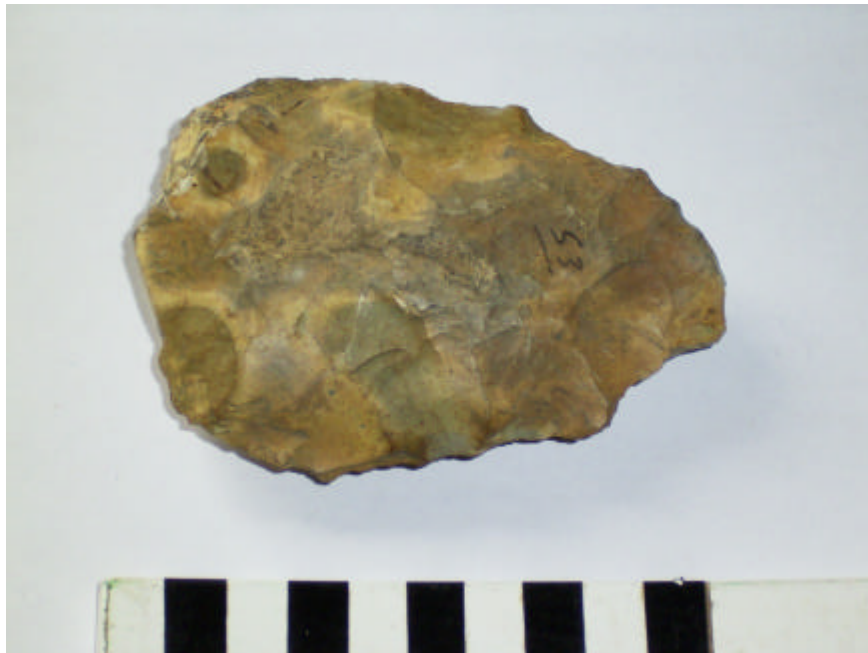
FINDER NAME   
FIND CAUSE   
FIND DATE

COMPLETENESS   
CONDITION   
PATINATION

LENGTH  WIDTH  THICKNESS  WEIGHT

DESCRIPTION

PHOTO NO.  PHOTOGRAPHER



|              |  |                  |          |             |              |
|--------------|--|------------------|----------|-------------|--------------|
| CAT. NO.     | 54   | TYPE             | ?Handaxe | MATERIAL    | Flint        |
| DATE FROM    | Prehistoric  |                  | TO       | Prehistoric |              |
| PROVENANCE   | 55   | near Basingstoke |          |             |              |
| CHART NO.    |  |                  |          |             |              |
| PROVENANCE 1 | near Basingstoke   |                  |          |             |              |
| PROVENANCE 2 |  |                  |          |             |              |
| PROVENANCE 3 |  |                  |          |             |              |
| FINDER NAME  |  |                  |          |             |              |
| FIND CAUSE   |  |                  |          |             |              |
| FIND DATE    |  |                  |          |             |              |
| COMPLETENESS | Yes  |                  |          |             |              |
| CONDITION    |  |                  |          |             |              |
| PATINATION   |  |                  |          |             |              |
| LENGTH       | 65   | WIDTH            | 35       | THICKNESS   |              |
| WEIGHT       |  |                  |          |             |              |
| DESCRIPTION  | Small handaxe (dimensions and description after MW catalogue; not to be found in collection) |                  |          |             |              |
| PHOTO NO.    |  |                  |          |             | PHOTOGRAPHER |
|              |  |                  |          |             |              |

CAT. NO.  TYPE  MATERIAL   
DATE FROM  TO

PROVENANCE   
CHART NO.   
PROVENANCE 1   
PROVENANCE 2   
PROVENANCE 3

FINDER NAME   
FIND CAUSE   
FIND DATE

COMPLETENESS   
CONDITION   
PATINATION

LENGTH  WIDTH  THICKNESS  WEIGHT

DESCRIPTION

PHOTO NO.  PHOTOGRAPHER



CAT. NO.  TYPE  MATERIAL   
DATE FROM  TO

PROVENANCE    
CHART NO.   
PROVENANCE 1

PROVENANCE 2  
PROVENANCE 3

FINDER NAME   
FIND CAUSE   
FIND DATE

COMPLETENESS

CONDITION  
PATINATION

LENGTH  WIDTH  THICKNESS  WEIGHT

DESCRIPTION

PHOTO NO.  PHOTOGRAPHER

|              |  |  |                       |           |              |
|--------------|--|--|-----------------------|-----------|--------------|
| CAT. NO.     | 57   | TYPE   | Unspecified core tool | MATERIAL  | Flint        |
| DATE FROM    | Mesolithic   | TO   | Mesolithic            |           |              |
| PROVENANCE   | 9  | off Sowley, east side of Sowley Boom, Solent |                       |           |              |
| CHART NO.    | 2040   |  |                       |           |              |
| PROVENANCE 1 | east side of Sowley Boom   |  |                       |           |              |
| PROVENANCE 2 | Solent   |  |                       |           |              |
| PROVENANCE 3 |  |  |                       |           |              |
| FINDER NAME  | Norman Pit   |  |                       |           |              |
| FIND CAUSE   | oyster dredging  |  |                       |           |              |
| FIND DATE    |  |  |                       |           |              |
| COMPLETENESS | Yes  |  |                       |           |              |
| CONDITION    |  |  |                       |           |              |
| PATINATION   |  |  |                       |           |              |
| LENGTH       | 192  | WIDTH  | 63                    | THICKNESS | 49           |
| WEIGHT       |  |  |                       |           |              |
| DESCRIPTION  | Fawn and brown mottled colour (dimensions and description after MW catalogue; not to be found in collection) |  |                       |           |              |
| PHOTO NO.    |  |  |                       |           | PHOTOGRAPHER |
|              |  |  |                       |           |              |

CAT. NO.  TYPE  MATERIAL   
DATE FROM  TO

PROVENANCE    
CHART NO.   
PROVENANCE 1   
PROVENANCE 2   
PROVENANCE 3

FINDER NAME   
FIND CAUSE   
FIND DATE

COMPLETENESS   
CONDITION   
PATINATION

LENGTH  WIDTH  THICKNESS  WEIGHT

DESCRIPTION

PHOTO NO.  PHOTOGRAPHER



|              |  |  |                                |           |       |
|--------------|--|--|--------------------------------|-----------|-------|
| CAT. NO.     | 59                                     | TYPE                                     | Reworked polished flint<br>axe | MATERIAL  | Flint |
| DATE FROM    | Early Neolithic                        | TO                                       | Early Neolithic                |           |       |
| PROVENANCE   | 57                                     | Rustington Farm, below Highdown, Ferring |                                |           |       |
| CHART NO.    |  |  |                                |           |       |
| PROVENANCE 1 | on Joyce's field                       |  |                                |           |       |
| PROVENANCE 2 | at Ferring                             |  |                                |           |       |
| PROVENANCE 3 | below Highdown                         |  |                                |           |       |
| FINDER NAME  |  |  |                                |           |       |
| FIND CAUSE   |  |  |                                |           |       |
| FIND DATE    |  |  |                                |           |       |
| COMPLETENESS | Yes                                    |  |                                |           |       |
| CONDITION    | Slightly rolled                        |  |                                |           |       |
| PATINATION   | Patinated                              |  |                                |           |       |
| LENGTH       | 66                                     | WIDTH                                    | 39                             | THICKNESS | 22    |
| WEIGHT       | 62                                     |  |                                |           |       |
| DESCRIPTION  | Reworked butt of Neolithic ground axe. |  |                                |           |       |
| PHOTO NO.    | R0010158                               | PHOTOGRAPHER                             | MHT                            |           |       |





CAT. NO.  TYPE  MATERIAL   
DATE FROM  TO

PROVENANCE    
CHART NO.   
PROVENANCE 1   
PROVENANCE 2   
PROVENANCE 3

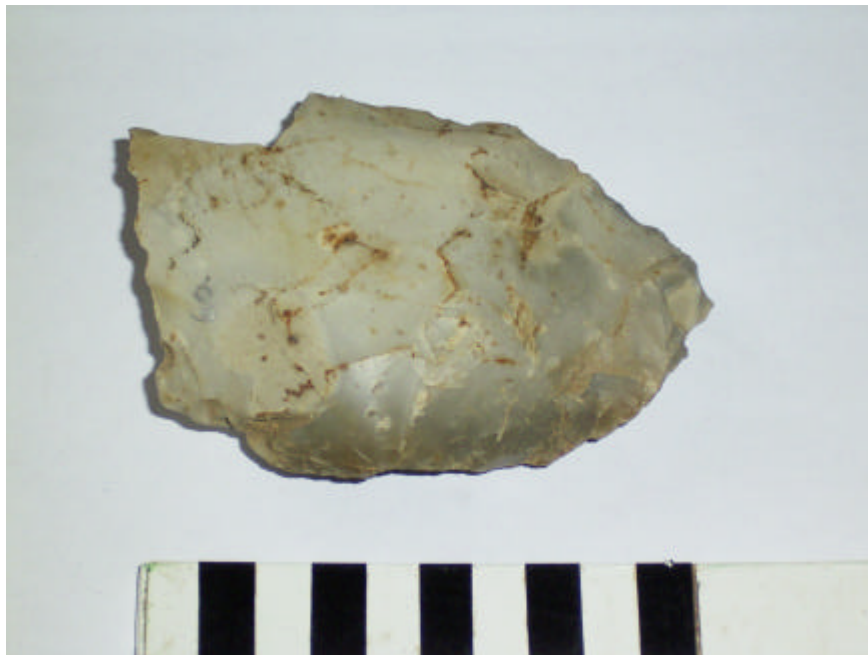
FINDER NAME   
FIND CAUSE   
FIND DATE

COMPLETENESS   
CONDITION   
PATINATION

LENGTH  WIDTH  THICKNESS  WEIGHT

DESCRIPTION

PHOTO NO.  PHOTOGRAPHER



CAT. NO.  TYPE  MATERIAL   
 DATE FROM  TO

PROVENANCE    
 CHART NO.   
 PROVENANCE 1   
 PROVENANCE 2   
 PROVENANCE 3

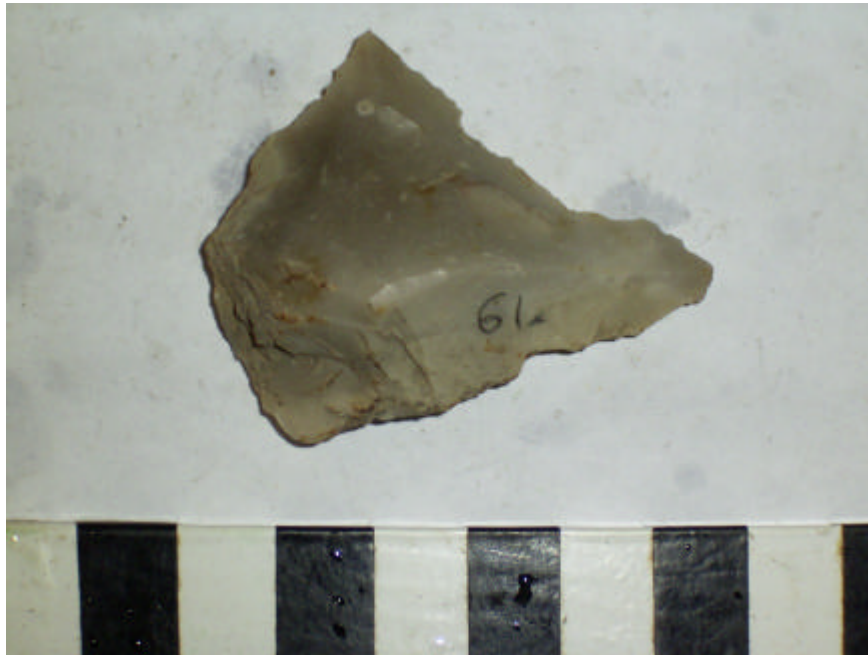
FINDER NAME   
 FIND CAUSE   
 FIND DATE

COMPLETENESS   
 CONDITION   
 PATINATION

LENGTH  WIDTH  THICKNESS  WEIGHT

DESCRIPTION

PHOTO NO.  PHOTOGRAPHER



|              |  |          |               |           |              |
|--------------|--|----------|---------------|-----------|--------------|
| CAT. NO.     | 62   | TYPE     | Spindle whorl | MATERIAL  |              |
| DATE FROM    | (?)Saxon   | TO       | (?)Saxon      |           |              |
| PROVENANCE   | 58   | Cornwall |               |           |              |
| CHART NO.    |  |          |               |           |              |
| PROVENANCE 1 | Cornwall   |          |               |           |              |
| PROVENANCE 2 |  |          |               |           |              |
| PROVENANCE 3 |  |          |               |           |              |
| FINDER NAME  | Jim Bulger   |          |               |           |              |
| FIND CAUSE   |  |          |               |           |              |
| FIND DATE    |  |          |               |           |              |
| COMPLETENESS | Yes  |          |               |           |              |
| CONDITION    |  |          |               |           |              |
| PATINATION   |  |          |               |           |              |
| LENGTH       | 26   | WIDTH    | 26            | THICKNESS |              |
| WEIGHT       |  |          |               |           |              |
| DESCRIPTION  | (dimensions and description after MW catalogue; not to be found in collection) |          |               |           |              |
| PHOTO NO.    |  |          |               |           | PHOTOGRAPHER |
|              |  |          |               |           |              |

CAT. NO.  TYPE  MATERIAL   
DATE FROM  TO

PROVENANCE   
CHART NO.   
PROVENANCE 1   
PROVENANCE 2   
PROVENANCE 3

FINDER NAME   
FIND CAUSE   
FIND DATE

COMPLETENESS   
CONDITION   
PATINATION

LENGTH  WIDTH  THICKNESS  WEIGHT

DESCRIPTION

PHOTO NO.  PHOTOGRAPHER



CAT. NO.  TYPE  MATERIAL   
 DATE FROM  TO

PROVENANCE    
 CHART NO.   
 PROVENANCE 1   
 PROVENANCE 2   
 PROVENANCE 3

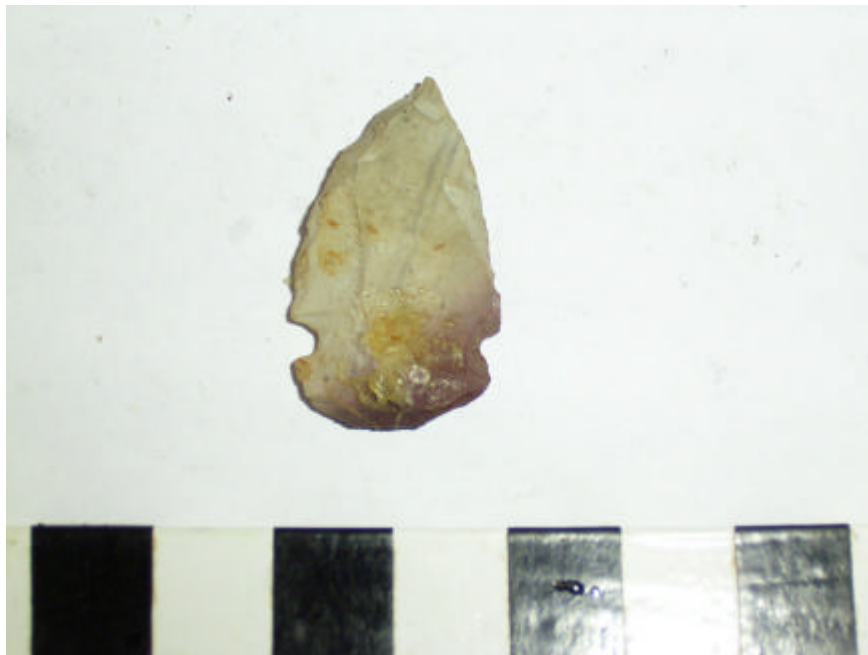
FINDER NAME   
 FIND CAUSE   
 FIND DATE

COMPLETENESS   
 CONDITION   
 PATINATION

LENGTH  WIDTH  THICKNESS  WEIGHT

DESCRIPTION

PHOTO NO.  PHOTOGRAPHER



CAT. NO.  TYPE  MATERIAL   
 DATE FROM  TO

PROVENANCE    
 CHART NO.   
 PROVENANCE 1   
 PROVENANCE 2   
 PROVENANCE 3

FINDER NAME   
 FIND CAUSE   
 FIND DATE

COMPLETENESS   
 CONDITION   
 PATINATION

LENGTH  WIDTH  THICKNESS  WEIGHT

DESCRIPTION

PHOTO NO.  PHOTOGRAPHER



CAT. NO.  TYPE  MATERIAL   
DATE FROM  TO

PROVENANCE   
CHART NO.   
PROVENANCE 1   
PROVENANCE 2   
PROVENANCE 3

FINDER NAME   
FIND CAUSE   
FIND DATE

COMPLETENESS   
CONDITION   
PATINATION

LENGTH  WIDTH  THICKNESS  WEIGHT

DESCRIPTION

PHOTO NO.  PHOTOGRAPHER



CAT. NO.  TYPE  MATERIAL   
DATE FROM  TO

PROVENANCE   
CHART NO.   
PROVENANCE 1   
PROVENANCE 2  
PROVENANCE 3

FINDER NAME  
FIND CAUSE  
FIND DATE

COMPLETENESS   
CONDITION   
PATINATION

LENGTH  WIDTH  THICKNESS  WEIGHT

DESCRIPTION

PHOTO NO.  PHOTOGRAPHER





CAT. NO.  TYPE  MATERIAL   
DATE FROM  TO

PROVENANCE    
CHART NO.   
PROVENANCE 1   
PROVENANCE 2   
PROVENANCE 3

FINDER NAME   
FIND CAUSE   
FIND DATE

COMPLETENESS

CONDITION   
PATINATION

LENGTH  WIDTH  THICKNESS  WEIGHT

DESCRIPTION

PHOTO NO.  PHOTOGRAPHER

CAT. NO.  TYPE  MATERIAL   
 DATE FROM  TO

PROVENANCE    
 CHART NO.   
 PROVENANCE 1   
 PROVENANCE 2   
 PROVENANCE 3

FINDER NAME   
 FIND CAUSE   
 FIND DATE

COMPLETENESS   
 CONDITION   
 PATINATION

LENGTH  WIDTH  THICKNESS  WEIGHT

DESCRIPTION

PHOTO NO.  PHOTOGRAPHER



CAT. NO.  TYPE  MATERIAL   
DATE FROM  TO

PROVENANCE    
CHART NO.   
PROVENANCE 1   
PROVENANCE 2   
PROVENANCE 3

FINDER NAME   
FIND CAUSE   
FIND DATE

COMPLETENESS   
CONDITION   
PATINATION

LENGTH  WIDTH  THICKNESS  WEIGHT

DESCRIPTION

PHOTO NO.  PHOTOGRAPHER



CAT. NO.  TYPE  MATERIAL   
 DATE FROM  TO

PROVENANCE    
 CHART NO.   
 PROVENANCE 1   
 PROVENANCE 2   
 PROVENANCE 3

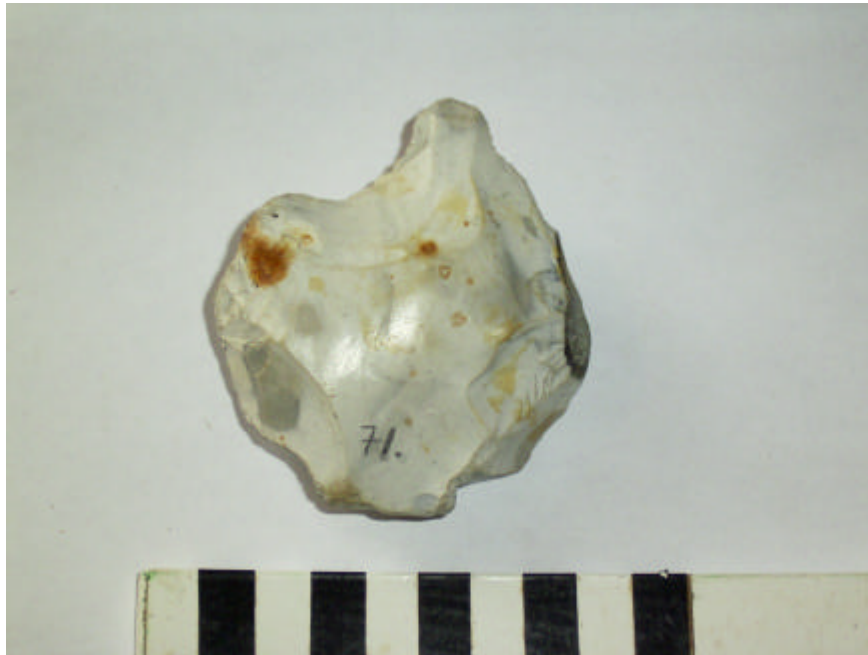
FINDER NAME   
 FIND CAUSE   
 FIND DATE

COMPLETENESS   
 CONDITION   
 PATINATION

LENGTH  WIDTH  THICKNESS  WEIGHT

DESCRIPTION

PHOTO NO.  PHOTOGRAPHER



CAT. NO.  TYPE  MATERIAL   
DATE FROM  TO

PROVENANCE    
CHART NO.   
PROVENANCE 1   
PROVENANCE 2   
PROVENANCE 3

FINDER NAME   
FIND CAUSE   
FIND DATE

COMPLETENESS   
CONDITION   
PATINATION   
LENGTH  WIDTH  THICKNESS  WEIGHT

DESCRIPTION

PHOTO NO.  PHOTOGRAPHER

CAT. NO.  TYPE  MATERIAL   
DATE FROM  TO

PROVENANCE    
CHART NO.   
PROVENANCE 1   
PROVENANCE 2   
PROVENANCE 3

FINDER NAME   
FIND CAUSE   
FIND DATE

COMPLETENESS

CONDITION

PATINATION

LENGTH  WIDTH  THICKNESS  WEIGHT

DESCRIPTION

PHOTO NO.  PHOTOGRAPHER

|              |                               |              |                   |           |       |
|--------------|-------------------------------|--------------|-------------------|-----------|-------|
| CAT. NO.     | 74                            | TYPE         | Ground edge knife | MATERIAL  | Flint |
| DATE FROM    | Late Neolithic                | TO           | Late Neolithic    |           |       |
| PROVENANCE   | unprovenanced                 |              |                   |           |       |
| CHART NO.    |                               |              |                   |           |       |
| PROVENANCE 1 | bought at car boot sale       |              |                   |           |       |
| PROVENANCE 2 |                               |              |                   |           |       |
| PROVENANCE 3 |                               |              |                   |           |       |
| FINDER NAME  |                               |              |                   |           |       |
| FIND CAUSE   |                               |              |                   |           |       |
| FIND DATE    |                               |              |                   |           |       |
| COMPLETENESS | Yes                           |              |                   |           |       |
| CONDITION    | Sharp                         |              |                   |           |       |
| PATINATION   | Unpatinated                   |              |                   |           |       |
| LENGTH       | 62                            | WIDTH        | 56                | THICKNESS | 8     |
| WEIGHT       | 25                            |              |                   |           |       |
| DESCRIPTION  | Flake knife with ground edges |              |                   |           |       |
| PHOTO NO.    | R0010060                      | PHOTOGRAPHER | MHT               |           |       |



CAT. NO.  TYPE  MATERIAL   
DATE FROM  TO

PROVENANCE   
CHART NO.   
PROVENANCE 1   
PROVENANCE 2   
PROVENANCE 3

FINDER NAME   
FIND CAUSE   
FIND DATE

COMPLETENESS   
CONDITION   
PATINATION

LENGTH  WIDTH  THICKNESS  WEIGHT

DESCRIPTION

PHOTO NO.  PHOTOGRAPHER





CAT. NO.  TYPE  MATERIAL   
DATE FROM  TO

PROVENANCE   
CHART NO.   
PROVENANCE 1   
PROVENANCE 2   
PROVENANCE 3

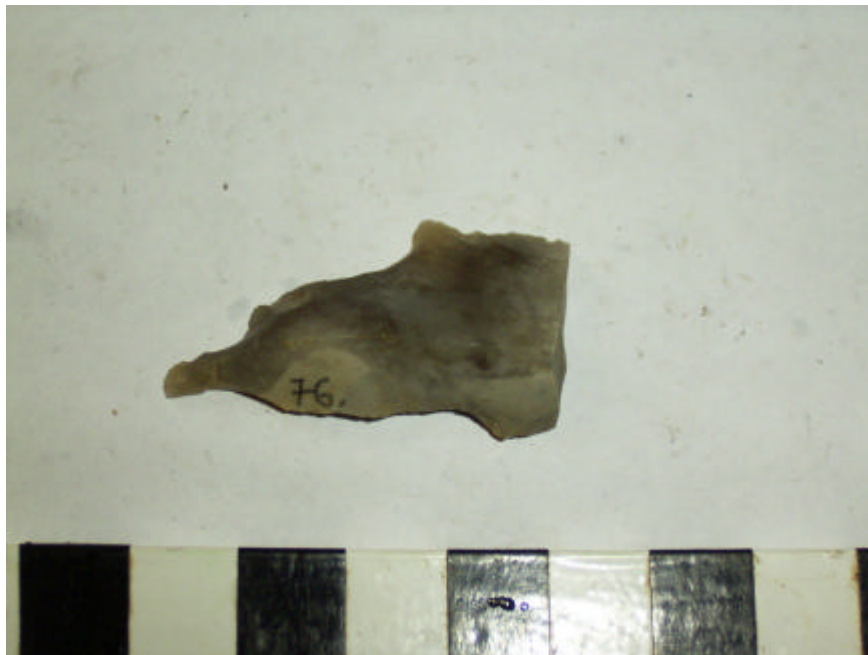
FINDER NAME   
FIND CAUSE   
FIND DATE

COMPLETENESS   
CONDITION   
PATINATION

LENGTH  WIDTH  THICKNESS  WEIGHT

DESCRIPTION

PHOTO NO.  PHOTOGRAPHER



CAT. NO.  TYPE  MATERIAL   
 DATE FROM  TO

PROVENANCE   
 CHART NO.   
 PROVENANCE 1   
 PROVENANCE 2   
 PROVENANCE 3

FINDER NAME   
 FIND CAUSE   
 FIND DATE

COMPLETENESS   
 CONDITION   
 PATINATION

LENGTH  WIDTH  THICKNESS  WEIGHT

DESCRIPTION

PHOTO NO.  PHOTOGRAPHER



CAT. NO.  TYPE  MATERIAL   
DATE FROM  TO

PROVENANCE   
CHART NO.   
PROVENANCE 1   
PROVENANCE 2   
PROVENANCE 3

FINDER NAME   
FIND CAUSE   
FIND DATE

COMPLETENESS   
CONDITION   
PATINATION

LENGTH  WIDTH  THICKNESS  WEIGHT

DESCRIPTION

PHOTO NO.  PHOTOGRAPHER



CAT. NO.  TYPE  MATERIAL   
 DATE FROM  TO

PROVENANCE    
 CHART NO.   
 PROVENANCE 1   
 PROVENANCE 2   
 PROVENANCE 3

FINDER NAME   
 FIND CAUSE   
 FIND DATE

COMPLETENESS   
 CONDITION   
 PATINATION

LENGTH  WIDTH  THICKNESS  WEIGHT

DESCRIPTION

PHOTO NO.  PHOTOGRAPHER



CAT. NO.  TYPE  MATERIAL   
DATE FROM  TO

PROVENANCE    
CHART NO.   
PROVENANCE 1   
PROVENANCE 2   
PROVENANCE 3

FINDER NAME   
FIND CAUSE   
FIND DATE

COMPLETENESS

CONDITION

PATINATION

LENGTH  WIDTH  THICKNESS  WEIGHT

DESCRIPTION

PHOTO NO.  PHOTOGRAPHER

CAT. NO.  TYPE  MATERIAL   
 DATE FROM  TO

PROVENANCE   
 CHART NO.   
 PROVENANCE 1   
 PROVENANCE 2   
 PROVENANCE 3

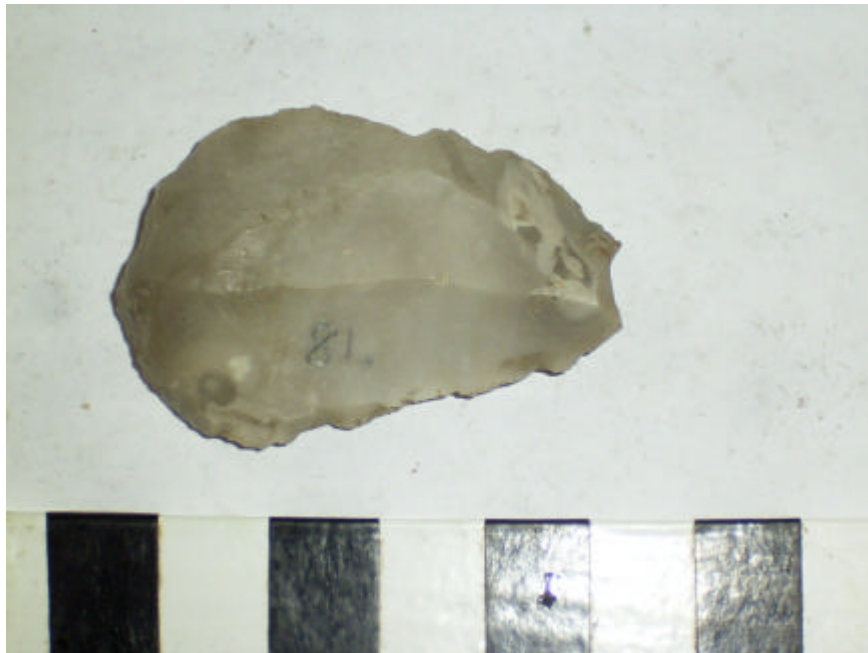
FINDER NAME   
 FIND CAUSE   
 FIND DATE

COMPLETENESS   
 CONDITION   
 PATINATION

LENGTH  WIDTH  THICKNESS  WEIGHT

DESCRIPTION

PHOTO NO.  PHOTOGRAPHER



CAT. NO.  TYPE  MATERIAL   
 DATE FROM  TO

PROVENANCE    
 CHART NO.   
 PROVENANCE 1   
 PROVENANCE 2   
 PROVENANCE 3

FINDER NAME   
 FIND CAUSE   
 FIND DATE

COMPLETENESS   
 CONDITION   
 PATINATION

LENGTH  WIDTH  THICKNESS  WEIGHT

DESCRIPTION

PHOTO NO.  PHOTOGRAPHER



CAT. NO.  TYPE  MATERIAL   
DATE FROM  TO

PROVENANCE    
CHART NO.   
PROVENANCE 1   
PROVENANCE 2   
PROVENANCE 3

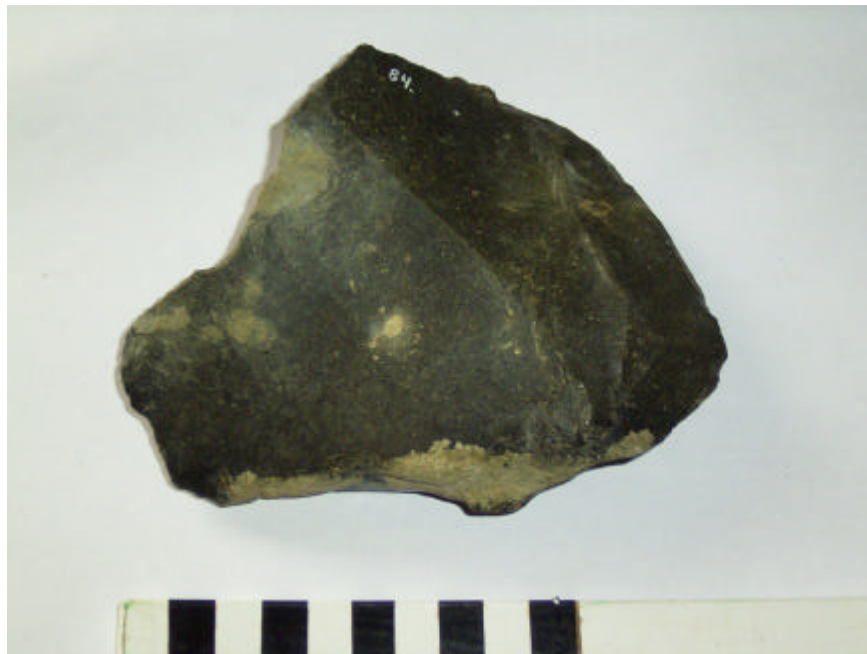
FINDER NAME  
FIND CAUSE   
FIND DATE

COMPLETENESS  
CONDITION  
PATINATION  
LENGTH  WIDTH  THICKNESS  WEIGHT   
DESCRIPTION

PHOTO NO. PHOTOGRAPHER



|              |  |                   |            |           |                 |
|--------------|--|-------------------|------------|-----------|-----------------|
| CAT. NO.     | 84   | TYPE              | Unclassed  | MATERIAL  | ?Portland chert |
| DATE FROM    | Lower Palaeolithic   | TO                | Bronze Age |           |                 |
| PROVENANCE   | 34   | marsh at Keyhaven |            |           |                 |
| CHART NO.    | 2021   |                   |            |           |                 |
| PROVENANCE 1 | on the marsh   |                   |            |           |                 |
| PROVENANCE 2 | at Keyhaven  |                   |            |           |                 |
| PROVENANCE 3 |  |                   |            |           |                 |
| FINDER NAME  | Stephen White  |                   |            |           |                 |
| FIND CAUSE   | fieldwalking   |                   |            |           |                 |
| FIND DATE    |  |                   |            |           |                 |
| COMPLETENESS | No   |                   |            |           |                 |
| CONDITION    | Slightly rolled  |                   |            |           |                 |
| PATINATION   | Unpatinated  |                   |            |           |                 |
| LENGTH       | 112  | WIDTH             | 128        | THICKNESS | 33              |
| WEIGHT       | 542  |                   |            |           |                 |
| DESCRIPTION  | Poss retouched broken flake of chert. Poss unfinished tool on large flake. |                   |            |           |                 |
| PHOTO NO.    | R0010091   | PHOTOGRAPHER      | MHT        |           |                 |



CAT. NO.  TYPE  MATERIAL   
DATE FROM  TO

PROVENANCE   
CHART NO.   
PROVENANCE 1   
PROVENANCE 2   
PROVENANCE 3

FINDER NAME   
FIND CAUSE   
FIND DATE

COMPLETENESS   
CONDITION   
PATINATION

LENGTH  WIDTH  THICKNESS  WEIGHT

DESCRIPTION

PHOTO NO.  PHOTOGRAPHER



CAT. NO.  TYPE  MATERIAL   
DATE FROM  TO

PROVENANCE    
CHART NO.   
PROVENANCE 1   
PROVENANCE 2  
PROVENANCE 3

FINDER NAME   
FIND CAUSE   
FIND DATE

COMPLETENESS   
CONDITION   
PATINATION

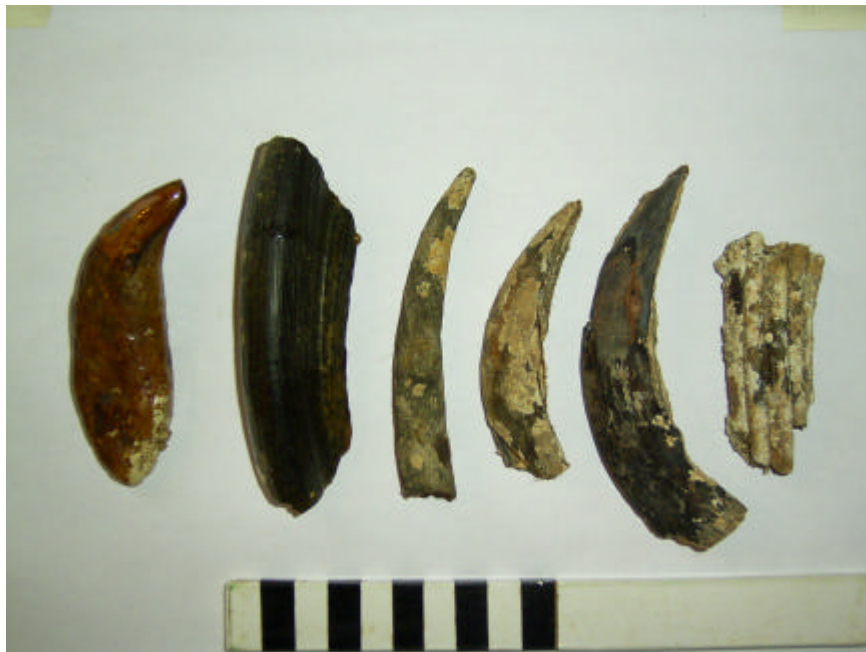
LENGTH  WIDTH  THICKNESS  WEIGHT

DESCRIPTION

PHOTO NO.  PHOTOGRAPHER



|              |   |                                      |                    |           |       |
|--------------|---|--------------------------------------|--------------------|-----------|-------|
| CAT. NO.     | 87  | TYPE                                 | Hippopotamus tooth | MATERIAL  | Tooth |
| DATE FROM    |   | TO                                   |                    |           |       |
| PROVENANCE   | 15  | off Newtown River mouth, IOW, Solent |                    |           |       |
| CHART NO.    | 2021  |                                      |                    |           |       |
| PROVENANCE 1 | off Newtown   |                                      |                    |           |       |
| PROVENANCE 2 |   |                                      |                    |           |       |
| PROVENANCE 3 |   |                                      |                    |           |       |
| FINDER NAME  | Stephen & Phillip White   |                                      |                    |           |       |
| FIND CAUSE   | oyster dredging   |                                      |                    |           |       |
| FIND DATE    |   |                                      |                    |           |       |
| COMPLETENESS | No  |                                      |                    |           |       |
| CONDITION    | Good  |                                      |                    |           |       |
| PATINATION   | Blackish exterior   |                                      |                    |           |       |
| LENGTH       |   | WIDTH                                |                    | THICKNESS |       |
| WEIGHT       |   |                                      |                    |           |       |
| DESCRIPTION  | Hippopotamus canine fragment. Logitudinally split.<br>Varnished? Length c. 112mm (measured from photo and drawing). |                                      |                    |           |       |
| PHOTO NO.    | R0010118, R0010119  |                                      | PHOTOGRAPHER       | MHT       |       |



CAT. NO.  TYPE  MATERIAL   
DATE FROM  TO

PROVENANCE    
CHART NO.   
PROVENANCE 1   
PROVENANCE 2  
PROVENANCE 3

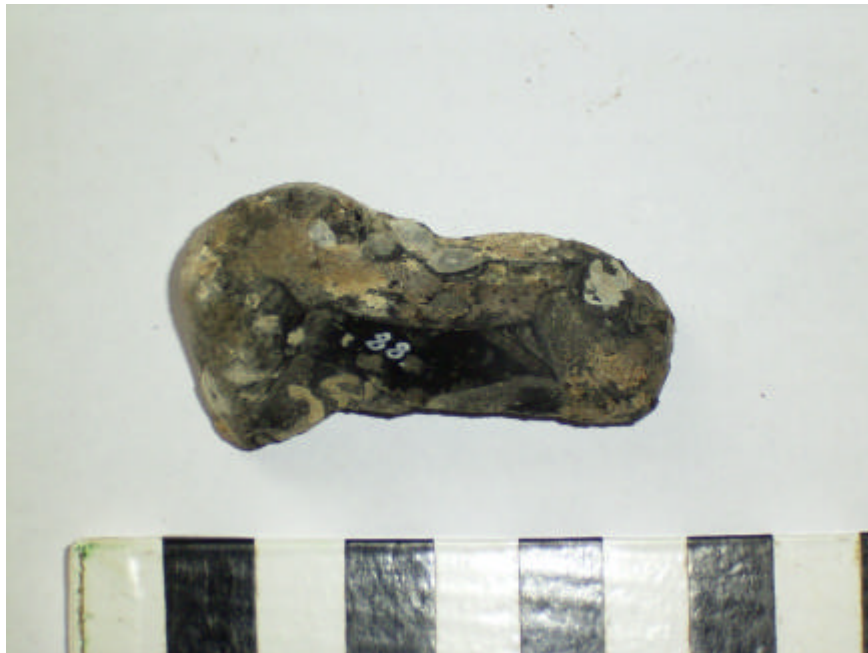
FINDER NAME  
FIND CAUSE   
FIND DATE

COMPLETENESS   
CONDITION   
PATINATION

LENGTH  WIDTH  THICKNESS  WEIGHT

DESCRIPTION

PHOTO NO.  PHOTOGRAPHER



CAT. NO.  TYPE  MATERIAL   
 DATE FROM  TO

PROVENANCE   
 CHART NO.   
 PROVENANCE 1   
 PROVENANCE 2   
 PROVENANCE 3

FINDER NAME   
 FIND CAUSE   
 FIND DATE

COMPLETENESS   
 CONDITION   
 PATINATION

LENGTH  WIDTH  THICKNESS  WEIGHT

DESCRIPTION

PHOTO NO.  PHOTOGRAPHER



CAT. NO.  TYPE  MATERIAL   
DATE FROM  TO

PROVENANCE    
CHART NO.   
PROVENANCE 1   
PROVENANCE 2   
PROVENANCE 3

FINDER NAME   
FIND CAUSE   
FIND DATE

COMPLETENESS   
CONDITION   
PATINATION

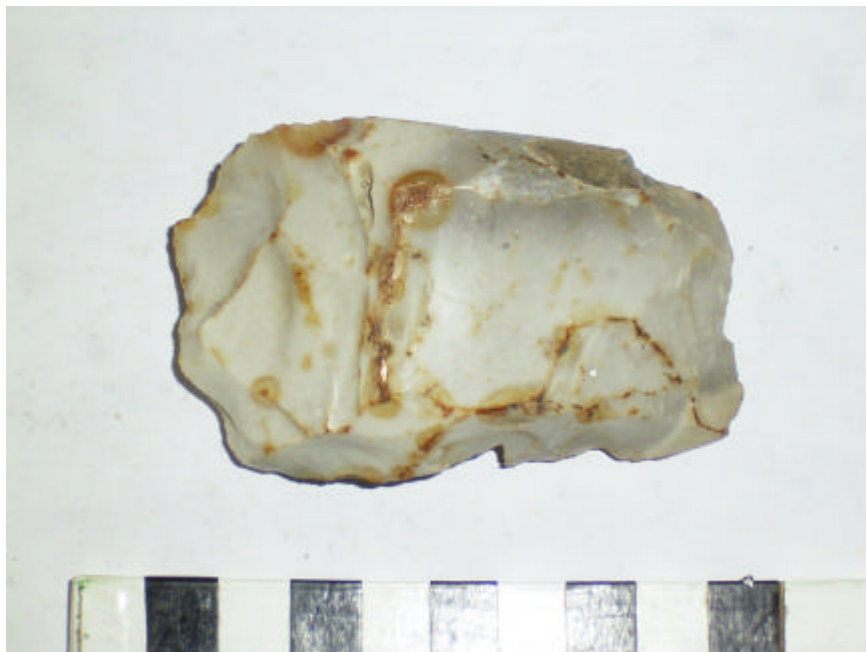
LENGTH  WIDTH  THICKNESS  WEIGHT

DESCRIPTION

PHOTO NO.  PHOTOGRAPHER



|              |   |                                    |                              |           |       |
|--------------|---|------------------------------------|------------------------------|-----------|-------|
| CAT. NO.     | 91  | TYPE                               | Reworked ground axe fragment | MATERIAL  | Flint |
| DATE FROM    | Early Neolithic   | TO                                 | Neolithic                    |           |       |
| PROVENANCE   | 62  | site of old Roman road, Bere Regis |                              |           |       |
| CHART NO.    |   |                                    |                              |           |       |
| PROVENANCE 1 | on site of old Roman road   |                                    |                              |           |       |
| PROVENANCE 2 | across field north of Anderson  |                                    |                              |           |       |
| PROVENANCE 3 | Bere Regis  |                                    |                              |           |       |
| FINDER NAME  |   |                                    |                              |           |       |
| FIND CAUSE   |   |                                    |                              |           |       |
| FIND DATE    |   |                                    |                              |           |       |
| COMPLETENESS | Yes   |                                    |                              |           |       |
| CONDITION    | Slightly rolled   |                                    |                              |           |       |
| PATINATION   | Patinated   |                                    |                              |           |       |
| LENGTH       | 78  | WIDTH                              | 51                           | THICKNESS | 27    |
| WEIGHT       | 127   |                                    |                              |           |       |
| DESCRIPTION  | Fragment of ground flint axe heavily reworked with bifacial flaking into coarse bifacial tool. Small area of ground edge remains. |                                    |                              |           |       |
| PHOTO NO.    | R0010273  | PHOTOGRAPHER                       | MHT                          |           |       |





CAT. NO.  TYPE  MATERIAL   
 DATE FROM  TO

PROVENANCE   
 CHART NO.   
 PROVENANCE 1   
 PROVENANCE 2   
 PROVENANCE 3

FINDER NAME   
 FIND CAUSE   
 FIND DATE

COMPLETENESS   
 CONDITION   
 PATINATION

LENGTH  WIDTH  THICKNESS  WEIGHT

DESCRIPTION

PHOTO NO.  PHOTOGRAPHER



CAT. NO.  TYPE  MATERIAL   
DATE FROM  TO

PROVENANCE   
CHART NO.   
PROVENANCE 1   
PROVENANCE 2   
PROVENANCE 3

FINDER NAME   
FIND CAUSE   
FIND DATE

COMPLETENESS   
CONDITION   
PATINATION

LENGTH  WIDTH  THICKNESS  WEIGHT

DESCRIPTION

PHOTO NO.  PHOTOGRAPHER



CAT. NO.  TYPE  MATERIAL   
DATE FROM  TO

PROVENANCE    
CHART NO.   
PROVENANCE 1   
PROVENANCE 2   
PROVENANCE 3

FINDER NAME   
FIND CAUSE   
FIND DATE

COMPLETENESS   
CONDITION   
PATINATION   
LENGTH  WIDTH  THICKNESS  WEIGHT

DESCRIPTION

PHOTO NO.  PHOTOGRAPHER

CAT. NO.  TYPE  MATERIAL   
 DATE FROM  TO

PROVENANCE   
 CHART NO.   
 PROVENANCE 1   
 PROVENANCE 2   
 PROVENANCE 3

FINDER NAME   
 FIND CAUSE   
 FIND DATE

COMPLETENESS   
 CONDITION   
 PATINATION

LENGTH  WIDTH  THICKNESS  WEIGHT

DESCRIPTION

PHOTO NO.  PHOTOGRAPHER



CAT. NO.  TYPE  MATERIAL   
DATE FROM  TO

PROVENANCE    
CHART NO.   
PROVENANCE 1   
PROVENANCE 2   
PROVENANCE 3

FINDER NAME   
FIND CAUSE   
FIND DATE

COMPLETENESS   
CONDITION   
PATINATION   
LENGTH  WIDTH  THICKNESS  WEIGHT   
DESCRIPTION

PHOTO NO.  PHOTOGRAPHER

CAT. NO.  TYPE  MATERIAL   
DATE FROM  TO

PROVENANCE

CHART NO.   
PROVENANCE 1

PROVENANCE 2  
PROVENANCE 3

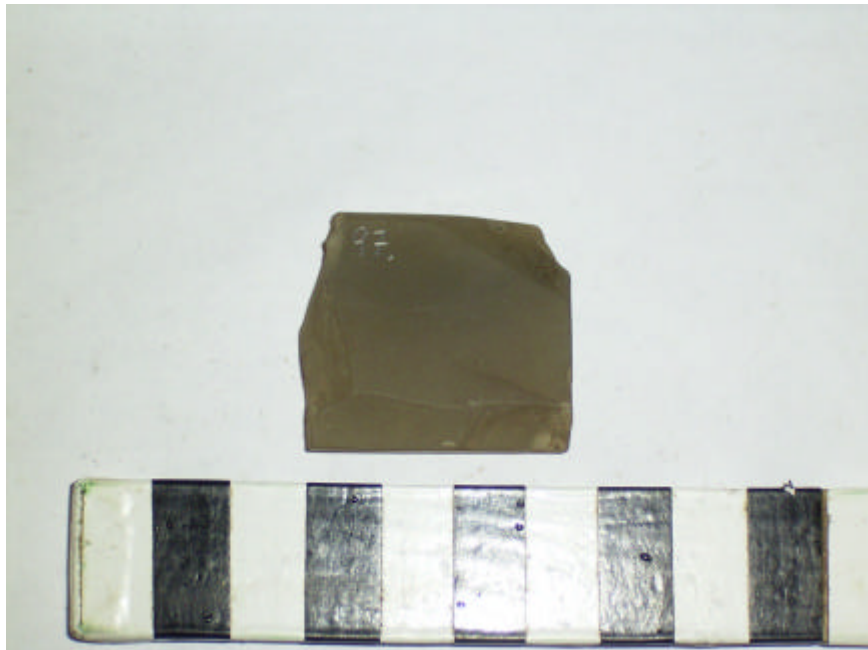
FINDER NAME   
FIND CAUSE   
FIND DATE

COMPLETENESS   
CONDITION   
PATINATION

LENGTH  WIDTH  THICKNESS  WEIGHT

DESCRIPTION

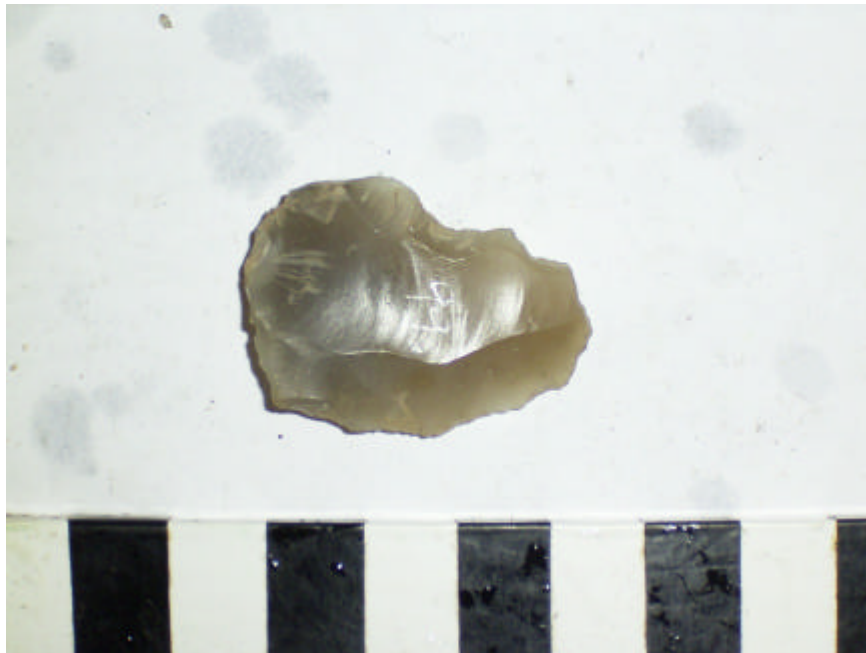
PHOTO NO.  PHOTOGRAPHER



|              |  |   |                     |           |       |
|--------------|--|---|---------------------|-----------|-------|
| CAT. NO.     | 98   | TYPE  | Denticulate scraper | MATERIAL  | Flint |
| DATE FROM    | Early Neolithic  | TO  | Bronze Age          |           |       |
| PROVENANCE   | 41   | field along side Hordle House School, Taddiford, Milford on Sea |                     |           |       |
| CHART NO.    |  |   |                     |           |       |
| PROVENANCE 1 | in field along side Hordle House School M.O.S.   |   |                     |           |       |
| PROVENANCE 2 |  |   |                     |           |       |
| PROVENANCE 3 |  |   |                     |           |       |
| FINDER NAME  |  |   |                     |           |       |
| FIND CAUSE   |  |   |                     |           |       |
| FIND DATE    |  |   |                     |           |       |
| COMPLETENESS | Yes  |   |                     |           |       |
| CONDITION    | Sharp  |   |                     |           |       |
| PATINATION   | Unpatinated  |   |                     |           |       |
| LENGTH       | 40   | WIDTH   | 49                  | THICKNESS | 16    |
| WEIGHT       | 39   |   |                     |           |       |
| DESCRIPTION  | Relatively thick End scraper with inverse retouch on bulb.<br>Direct, continuous, denticulate, convex retouch at dist end. |   |                     |           |       |
| PHOTO NO.    | R0010155   | PHOTOGRAPHER  | MHT                 |           |       |

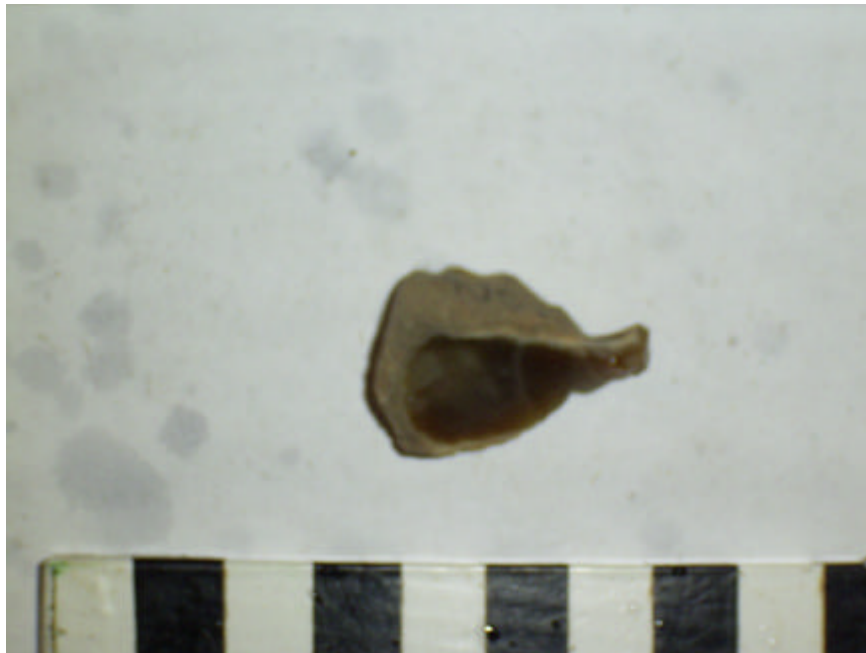


|              |  |              |            |           |       |
|--------------|--|--------------|------------|-----------|-------|
| CAT. NO.     | 99   | TYPE         | Flake      | MATERIAL  | Flint |
| DATE FROM    | Early Neolithic  | TO           | Bronze Age |           |       |
| PROVENANCE   | 41 field along side Hordle House School, Taddiford, Milford on Sea |              |            |           |       |
| CHART NO.    |  |              |            |           |       |
| PROVENANCE 1 | in field along side Hordle House School M.O.S.                     |              |            |           |       |
| PROVENANCE 2 |  |              |            |           |       |
| PROVENANCE 3 |  |              |            |           |       |
| FINDER NAME  |  |              |            |           |       |
| FIND CAUSE   |  |              |            |           |       |
| FIND DATE    |  |              |            |           |       |
| COMPLETENESS | Yes  |              |            |           |       |
| CONDITION    | Slightly rolled  |              |            |           |       |
| PATINATION   | Unpatinated  |              |            |           |       |
| LENGTH       | 36   | WIDTH        | 27         | THICKNESS | 5     |
| WEIGHT       | 6  |              |            |           |       |
| DESCRIPTION  | Miscellaneous undiagnostic flake                                   |              |            |           |       |
| PHOTO NO.    | R0010250   | PHOTOGRAPHER | MHT        |           |       |





|              |  |       |            |              |       |
|--------------|--|-------|------------|--------------|-------|
| CAT. NO.     | 100  | TYPE  | Flake      | MATERIAL     | Flint |
| DATE FROM    | Early Neolithic  | TO    | Bronze Age |              |       |
| PROVENANCE   | 41 field along side Hordle House School, Taddiford, Milford on Sea |       |            |              |       |
| CHART NO.    |  |       |            |              |       |
| PROVENANCE 1 | in field along side Hordle House School M.O.S.                     |       |            |              |       |
| PROVENANCE 2 |  |       |            |              |       |
| PROVENANCE 3 |  |       |            |              |       |
| FINDER NAME  |  |       |            |              |       |
| FIND CAUSE   |  |       |            |              |       |
| FIND DATE    |  |       |            |              |       |
| COMPLETENESS | Yes  |       |            |              |       |
| CONDITION    | Sharp  |       |            |              |       |
| PATINATION   | Unpatinated  |       |            |              |       |
| LENGTH       | 31   | WIDTH | 20         | THICKNESS    | 12    |
| WEIGHT       | 6  |       |            |              |       |
| DESCRIPTION  | Miscellaneous undiagnostic flake                                   |       |            |              |       |
| PHOTO NO.    | R0010237   |       |            | PHOTOGRAPHER | MHT   |



|              |  |   |            |           |       |
|--------------|--|---|------------|-----------|-------|
| CAT. NO.     | 101  | TYPE  | Flake      | MATERIAL  | Flint |
| DATE FROM    | Ealy Neolithic                                 | TO  | Bronze Age |           |       |
| PROVENANCE   | 41   | field along side Hordle House School, Taddiford, Milford on Sea |            |           |       |
| CHART NO.    |  |   |            |           |       |
| PROVENANCE 1 | in field along side Hordle House School M.O.S. |   |            |           |       |
| PROVENANCE 2 |  |   |            |           |       |
| PROVENANCE 3 |  |   |            |           |       |
| FINDER NAME  |  |   |            |           |       |
| FIND CAUSE   |  |   |            |           |       |
| FIND DATE    |  |   |            |           |       |
| COMPLETENESS | Yes  |   |            |           |       |
| CONDITION    | Slightly rolled                                |   |            |           |       |
| PATINATION   | Unpatinated                                    |   |            |           |       |
| LENGTH       | 35   | WIDTH   | 24         | THICKNESS | 7     |
| WEIGHT       | 7  |   |            |           |       |
| DESCRIPTION  | Tertiary hard hammer struck flake              |   |            |           |       |
| PHOTO NO.    | R0010154                                       | PHOTOGRAPHER  | MHT        |           |       |



CAT. NO.  TYPE  MATERIAL   
DATE FROM  TO

PROVENANCE

CHART NO.   
PROVENANCE 1

PROVENANCE 2   
PROVENANCE 3

FINDER NAME   
FIND CAUSE   
FIND DATE

COMPLETENESS   
CONDITION   
PATINATION

LENGTH  WIDTH  THICKNESS  WEIGHT

DESCRIPTION

PHOTO NO.  PHOTOGRAPHER



|              |  |   |              |             |              |
|--------------|--|---|--------------|-------------|--------------|
| CAT. NO.     | 103  | TYPE  | Worked flint | MATERIAL    | Flint        |
| DATE FROM    | Prehistoric  |   | TO           | Prehistoric |              |
| PROVENANCE   | 41   | field along side Hordle House School, Taddiford, Milford on Sea |              |             |              |
| CHART NO.    |  |   |              |             |              |
| PROVENANCE 1 | in field along side Hordle House School M.O.S.   |   |              |             |              |
| PROVENANCE 2 |  |   |              |             |              |
| PROVENANCE 3 |  |   |              |             |              |
| FINDER NAME  |  |   |              |             |              |
| FIND CAUSE   |  |   |              |             |              |
| FIND DATE    |  |   |              |             |              |
| COMPLETENESS | Yes  |   |              |             |              |
| CONDITION    |  |   |              |             |              |
| PATINATION   |  |   |              |             |              |
| LENGTH       | 40   | WIDTH   | 31           | THICKNESS   |              |
| WEIGHT       |  |   |              |             |              |
| DESCRIPTION  | Blade/flake (dimensions and description after MW catalogue; not to be found in collection) |   |              |             |              |
| PHOTO NO.    |  |   |              |             | PHOTOGRAPHER |
|              |  |   |              |             |              |

|              |  |              |            |           |       |
|--------------|--|--------------|------------|-----------|-------|
| CAT. NO.     | 104  | TYPE         | Flake      | MATERIAL  | Flint |
| DATE FROM    | Early Neolithic  | TO           | Bronze Age |           |       |
| PROVENANCE   | 41 field along side Hordle House School, Taddiford, Milford on Sea |              |            |           |       |
| CHART NO.    |  |              |            |           |       |
| PROVENANCE 1 | in field along side Hordle House School M.O.S.                     |              |            |           |       |
| PROVENANCE 2 |  |              |            |           |       |
| PROVENANCE 3 |  |              |            |           |       |
| FINDER NAME  |  |              |            |           |       |
| FIND CAUSE   |  |              |            |           |       |
| FIND DATE    |  |              |            |           |       |
| COMPLETENESS |  |              |            |           |       |
| CONDITION    | Sharp  |              |            |           |       |
| PATINATION   | Unpatinated  |              |            |           |       |
| LENGTH       | 40   | WIDTH        | 28         | THICKNESS | 11    |
| WEIGHT       | 15   |              |            |           |       |
| DESCRIPTION  | Secondary hard hammer struck flake                                 |              |            |           |       |
| PHOTO NO.    | R0010150   | PHOTOGRAPHER | MHT        |           |       |



CAT. NO.  TYPE  MATERIAL

DATE FROM  TO

PROVENANCE

CHART NO.

PROVENANCE 1

PROVENANCE 2

PROVENANCE 3

FINDER NAME

FIND CAUSE

FIND DATE

COMPLETENESS

CONDITION

PATINATION

LENGTH  WIDTH  THICKNESS  WEIGHT

DESCRIPTION

PHOTO NO.  PHOTOGRAPHER

|              |  |              |            |           |       |
|--------------|--|--------------|------------|-----------|-------|
| CAT. NO.     | 106  | TYPE         | Flake      | MATERIAL  | Flint |
| DATE FROM    | Early Neolithic  | TO           | Bronze Age |           |       |
| PROVENANCE   | 41 field along side Hordle House School, Taddiford, Milford on Sea |              |            |           |       |
| CHART NO.    |  |              |            |           |       |
| PROVENANCE 1 | in field along side Hordle House School M.O.S.                     |              |            |           |       |
| PROVENANCE 2 |  |              |            |           |       |
| PROVENANCE 3 |  |              |            |           |       |
| FINDER NAME  |  |              |            |           |       |
| FIND CAUSE   |  |              |            |           |       |
| FIND DATE    |  |              |            |           |       |
| COMPLETENESS | Yes  |              |            |           |       |
| CONDITION    | Slightly rolled  |              |            |           |       |
| PATINATION   | Unpatinated  |              |            |           |       |
| LENGTH       | 30   | WIDTH        | 22         | THICKNESS | 8     |
| WEIGHT       | 7  |              |            |           |       |
| DESCRIPTION  | Undiagnostic flake. Heavily plough damaged                         |              |            |           |       |
| PHOTO NO.    | R0010247   | PHOTOGRAPHER | MHT        |           |       |

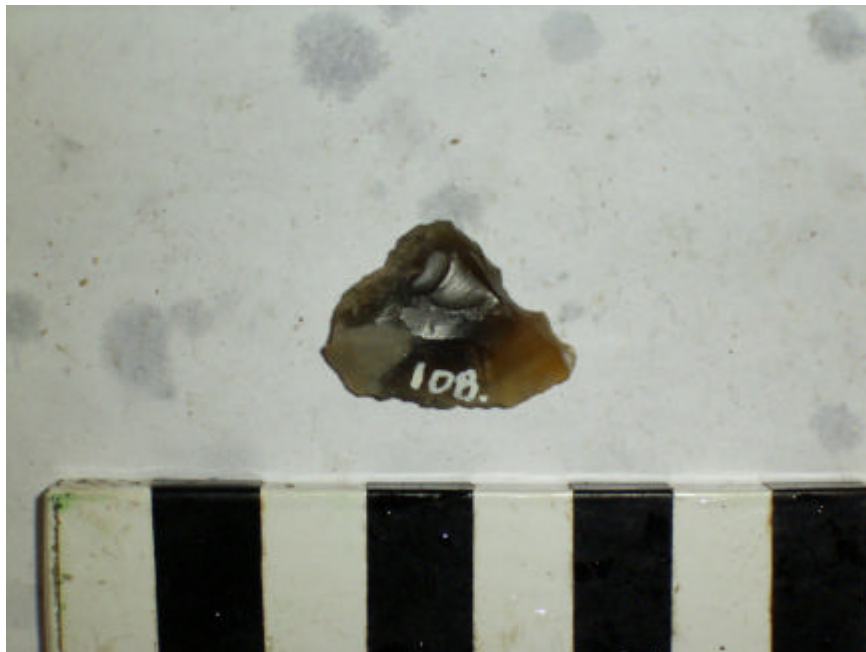


|              |  |              |            |           |       |
|--------------|--|--------------|------------|-----------|-------|
| CAT. NO.     | 107  | TYPE         | Flake      | MATERIAL  | Flint |
| DATE FROM    | Early Neolithic  | TO           | Bronze Age |           |       |
| PROVENANCE   | 41 field along side Hordle House School, Taddiford, Milford on Sea |              |            |           |       |
| CHART NO.    |  |              |            |           |       |
| PROVENANCE 1 | in field along side Hordle House School M.O.S.                     |              |            |           |       |
| PROVENANCE 2 |  |              |            |           |       |
| PROVENANCE 3 |  |              |            |           |       |
| FINDER NAME  |  |              |            |           |       |
| FIND CAUSE   |  |              |            |           |       |
| FIND DATE    |  |              |            |           |       |
| COMPLETENESS | Yes  |              |            |           |       |
| CONDITION    | Slightly rolled  |              |            |           |       |
| PATINATION   | Unpatinated  |              |            |           |       |
| LENGTH       | 33   | WIDTH        | 23         | THICKNESS | 11    |
| WEIGHT       | 9  |              |            |           |       |
| DESCRIPTION  | Tertiary hard hammer struck flake                                  |              |            |           |       |
| PHOTO NO.    | R0010149   | PHOTOGRAPHER | MHT        |           |       |





|              |   |       |            |              |       |
|--------------|---|-------|------------|--------------|-------|
| CAT. NO.     | 108   | TYPE  | Flake      | MATERIAL     | Flint |
| DATE FROM    | Early Neolithic   | TO    | Bronze Age |              |       |
| PROVENANCE   | 41 field along side Hordle House School, Taddiford, Milford on Sea  |       |            |              |       |
| CHART NO.    |   |       |            |              |       |
| PROVENANCE 1 | in field along side Hordle House School M.O.S.                      |       |            |              |       |
| PROVENANCE 2 |   |       |            |              |       |
| PROVENANCE 3 |   |       |            |              |       |
| FINDER NAME  |   |       |            |              |       |
| FIND CAUSE   |   |       |            |              |       |
| FIND DATE    |   |       |            |              |       |
| COMPLETENESS | Yes   |       |            |              |       |
| CONDITION    | Slightly rolled   |       |            |              |       |
| PATINATION   | Unpatinated   |       |            |              |       |
| LENGTH       | 21  | WIDTH | 19         | THICKNESS    | 5     |
| WEIGHT       | 2   |       |            |              |       |
| DESCRIPTION  | Undiagnostic flint flake. Butt crushed. All heavily plough damaged. |       |            |              |       |
| PHOTO NO.    | R0010249  |       |            | PHOTOGRAPHER | MHT   |



|              |   |   |                           |           |       |
|--------------|---|---|---------------------------|-----------|-------|
| CAT. NO.     | 109   | TYPE  | Fragment of scraper blade | MATERIAL  | Flint |
| DATE FROM    | Early Neolithic   | TO  | Bronze Age                |           |       |
| PROVENANCE   | 41  | field along side Hordle House School, Taddiford, Milford on Sea |                           |           |       |
| CHART NO.    |   |   |                           |           |       |
| PROVENANCE 1 | in field along side Hordle House School M.O.S.  |   |                           |           |       |
| PROVENANCE 2 |   |   |                           |           |       |
| PROVENANCE 3 |   |   |                           |           |       |
| FINDER NAME  |   |   |                           |           |       |
| FIND CAUSE   |   |   |                           |           |       |
| FIND DATE    |   |   |                           |           |       |
| COMPLETENESS | Yes   |   |                           |           |       |
| CONDITION    | Sharp   |   |                           |           |       |
| PATINATION   | Unpatinated   |   |                           |           |       |
| LENGTH       | 13  | WIDTH   | 24                        | THICKNESS | 9     |
| WEIGHT       | 3   |   |                           |           |       |
| DESCRIPTION  | Fragment/flake from blade of end scraper. Either snapped or removed during resharpening |   |                           |           |       |
| PHOTO NO.    | R0010153  | PHOTOGRAPHER  | MHT                       |           |       |



CAT. NO.  TYPE  MATERIAL   
DATE FROM  TO

PROVENANCE

CHART NO.   
PROVENANCE 1   
PROVENANCE 2   
PROVENANCE 3

FINDER NAME   
FIND CAUSE   
FIND DATE

COMPLETENESS   
CONDITION   
PATINATION

LENGTH  WIDTH  THICKNESS  WEIGHT

DESCRIPTION

PHOTO NO.  PHOTOGRAPHER



CAT. NO.  TYPE  MATERIAL   
DATE FROM  TO

PROVENANCE

CHART NO.   
PROVENANCE 1

PROVENANCE 2  
PROVENANCE 3

FINDER NAME   
FIND CAUSE   
FIND DATE

COMPLETENESS  
CONDITION  
PATINATION

LENGTH  WIDTH  THICKNESS  WEIGHT

DESCRIPTION

PHOTO NO.  PHOTOGRAPHER

|              |  |   |              |             |              |
|--------------|--|---|--------------|-------------|--------------|
| CAT. NO.     | 112  | TYPE  | Worked flint | MATERIAL    | Flint        |
| DATE FROM    | Prehistoric  |   | TO           | Prehistoric |              |
| PROVENANCE   | 41   | field along side Hordle House School, Taddiford, Milford on Sea |              |             |              |
| CHART NO.    |  |   |              |             |              |
| PROVENANCE 1 | in field along side Hordle House School M.O.S.   |   |              |             |              |
| PROVENANCE 2 |  |   |              |             |              |
| PROVENANCE 3 |  |   |              |             |              |
| FINDER NAME  |  |   |              |             |              |
| FIND CAUSE   |  |   |              |             |              |
| FIND DATE    |  |   |              |             |              |
| COMPLETENESS |  |   |              |             |              |
| CONDITION    |  |   |              |             |              |
| PATINATION   |  |   |              |             |              |
| LENGTH       | 27   | WIDTH   | 16           | THICKNESS   |              |
| WEIGHT       |  |   |              |             |              |
| DESCRIPTION  | Blade/flake (dimensions and description after MW catalogue; not to be found in collection) |   |              |             |              |
| PHOTO NO.    |  |   |              |             | PHOTOGRAPHER |
|              |  |   |              |             |              |

CAT. NO.  TYPE  MATERIAL   
 DATE FROM  TO

PROVENANCE    
 CHART NO.   
 PROVENANCE 1   
 PROVENANCE 2   
 PROVENANCE 3

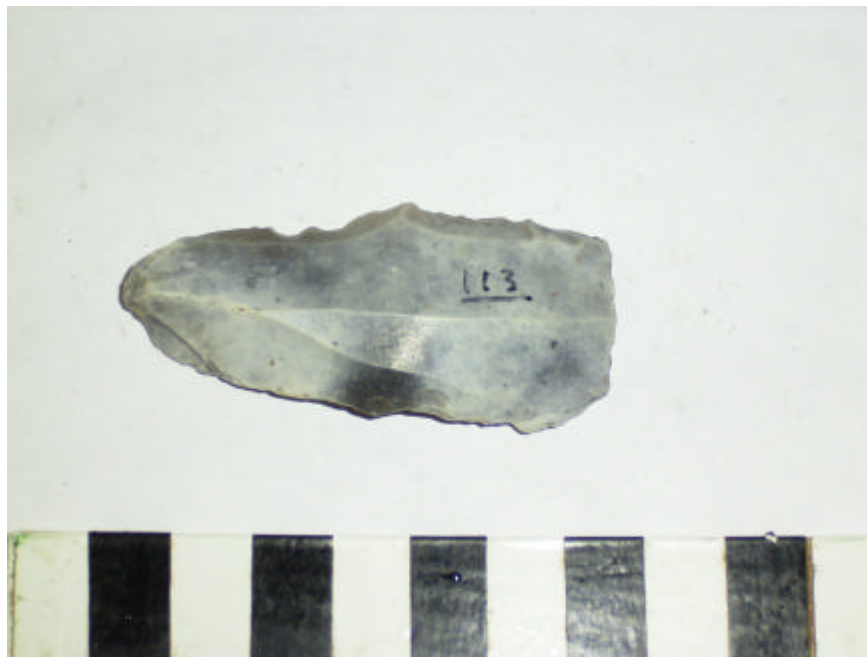
FINDER NAME   
 FIND CAUSE   
 FIND DATE

COMPLETENESS   
 CONDITION   
 PATINATION

LENGTH  WIDTH  THICKNESS  WEIGHT

DESCRIPTION

PHOTO NO.  PHOTOGRAPHER



CAT. NO.  TYPE  MATERIAL   
DATE FROM  TO

PROVENANCE    
CHART NO.   
PROVENANCE 1   
PROVENANCE 2   
PROVENANCE 3

FINDER NAME   
FIND CAUSE   
FIND DATE

COMPLETENESS   
CONDITION   
PATINATION   
LENGTH  WIDTH  THICKNESS  WEIGHT

DESCRIPTION

PHOTO NO.  PHOTOGRAPHER

CAT. NO.  TYPE  MATERIAL   
DATE FROM  TO

PROVENANCE   
CHART NO.   
PROVENANCE 1   
PROVENANCE 2   
PROVENANCE 3

FINDER NAME   
FIND CAUSE   
FIND DATE

COMPLETENESS   
CONDITION   
PATINATION

LENGTH  WIDTH  THICKNESS  WEIGHT

DESCRIPTION

PHOTO NO.  PHOTOGRAPHER





|              |                    |                               |                                      |           |              |  |
|--------------|--------------------|-------------------------------|--------------------------------------|-----------|--------------|--|
| CAT. NO.     | 116                | TYPE                          | DUPLICATE RECORD<br>of no. 7 (flake) | MATERIAL  |              |  |
| DATE FROM    |                    | TO                            |                                      |           |              |  |
| PROVENANCE   | 7                  | off Stone Point, Lepe, Solent |                                      |           |              |  |
| CHART NO.    | 2040               |                               |                                      |           |              |  |
| PROVENANCE 1 | off Stone Point    |                               |                                      |           |              |  |
| PROVENANCE 2 | Lepe               |                               |                                      |           |              |  |
| PROVENANCE 3 |                    |                               |                                      |           |              |  |
| FINDER NAME  | Stephen White      |                               |                                      |           |              |  |
| FIND CAUSE   | oyster dredging    |                               |                                      |           |              |  |
| FIND DATE    |                    |                               |                                      |           |              |  |
| COMPLETENESS |                    |                               |                                      |           |              |  |
| CONDITION    |                    |                               |                                      |           |              |  |
| PATINATION   |                    |                               |                                      |           |              |  |
| LENGTH       |                    | WIDTH                         |                                      | THICKNESS |              |  |
| WEIGHT       |                    |                               |                                      |           |              |  |
| DESCRIPTION  | Same as Find No. 7 |                               |                                      |           |              |  |
| PHOTO NO.    |                    |                               |                                      |           | PHOTOGRAPHER |  |

CAT. NO.  TYPE  MATERIAL   
DATE FROM  TO

PROVENANCE    
CHART NO.   
PROVENANCE 1   
PROVENANCE 2  
PROVENANCE 3

FINDER NAME  
FIND CAUSE  
FIND DATE

COMPLETENESS   
CONDITION   
PATINATION

LENGTH  WIDTH  THICKNESS  WEIGHT

DESCRIPTION

PHOTO NO.  PHOTOGRAPHER



CAT. NO.  TYPE  MATERIAL   
DATE FROM  TO

PROVENANCE   
CHART NO.   
PROVENANCE 1   
PROVENANCE 2   
PROVENANCE 3

FINDER NAME   
FIND CAUSE   
FIND DATE

COMPLETENESS   
CONDITION   
PATINATION

LENGTH  WIDTH  THICKNESS  WEIGHT

DESCRIPTION

PHOTO NO.  PHOTOGRAPHER



CAT. NO.  TYPE  MATERIAL   
DATE FROM  TO

PROVENANCE   
CHART NO.   
PROVENANCE 1   
PROVENANCE 2   
PROVENANCE 3

FINDER NAME   
FIND CAUSE   
FIND DATE

COMPLETENESS   
CONDITION   
PATINATION

LENGTH  WIDTH  THICKNESS  WEIGHT

DESCRIPTION

PHOTO NO.  PHOTOGRAPHER



CAT. NO.  TYPE  MATERIAL   
DATE FROM  TO

PROVENANCE   
CHART NO.   
PROVENANCE 1   
PROVENANCE 2   
PROVENANCE 3

FINDER NAME   
FIND CAUSE   
FIND DATE

COMPLETENESS   
CONDITION   
PATINATION

LENGTH  WIDTH  THICKNESS  WEIGHT

DESCRIPTION

PHOTO NO.  PHOTOGRAPHER



CAT. NO.  TYPE  MATERIAL   
DATE FROM  TO

PROVENANCE   
CHART NO.   
PROVENANCE 1   
PROVENANCE 2   
PROVENANCE 3

FINDER NAME   
FIND CAUSE   
FIND DATE

COMPLETENESS   
CONDITION   
PATINATION

LENGTH  WIDTH  THICKNESS  WEIGHT

DESCRIPTION

PHOTO NO.  PHOTOGRAPHER



|              |  |                                       |            |           |                     |
|--------------|--|---------------------------------------|------------|-----------|---------------------|
| CAT. NO.     | 122  | TYPE                                  | Pick       | MATERIAL  | Ironstone/sandstone |
| DATE FROM    | Mesolithic   | TO                                    | Mesolithic |           |                     |
| PROVENANCE   | 46   | close inshore at Tanners Lane, Solent |            |           |                     |
| CHART NO.    | 2040   |                                       |            |           |                     |
| PROVENANCE 1 | close inshore  |                                       |            |           |                     |
| PROVENANCE 2 | at Tanners   |                                       |            |           |                     |
| PROVENANCE 3 |  |                                       |            |           |                     |
| FINDER NAME  | Stephen & Phillip White  |                                       |            |           |                     |
| FIND CAUSE   | oyster dredging  |                                       |            |           |                     |
| FIND DATE    |  |                                       |            |           |                     |
| COMPLETENESS | Yes  |                                       |            |           |                     |
| CONDITION    | Sharp  |                                       |            |           |                     |
| PATINATION   | Unpatinated  |                                       |            |           |                     |
| LENGTH       | 181  | WIDTH                                 | 57         | THICKNESS | 52                  |
| WEIGHT       | 587  |                                       |            |           |                     |
| DESCRIPTION  | Coarsely made pick, butt unmodified, tapers to point, irregular cylindrical x section. |                                       |            |           |                     |
| PHOTO NO.    | R0010076   | PHOTOGRAPHER                          | MHT        |           |                     |



|              |  |                                      |                       |           |              |
|--------------|--|--------------------------------------|-----------------------|-----------|--------------|
| CAT. NO.     | 123  | TYPE                                 | Unspecified core tool | MATERIAL  | Flint        |
| DATE FROM    | Mesolithic   | TO                                   | Mesolithic            |           |              |
| PROVENANCE   | 15   | off Newtown River mouth, IOW, Solent |                       |           |              |
| CHART NO.    | 2021   |                                      |                       |           |              |
| PROVENANCE 1 | off Newtown  |                                      |                       |           |              |
| PROVENANCE 2 | IOW  |                                      |                       |           |              |
| PROVENANCE 3 |  |                                      |                       |           |              |
| FINDER NAME  | Stephen & Phillip White  |                                      |                       |           |              |
| FIND CAUSE   | oyster dredging  |                                      |                       |           |              |
| FIND DATE    |  |                                      |                       |           |              |
| COMPLETENESS | Yes  |                                      |                       |           |              |
| CONDITION    |  |                                      |                       |           |              |
| PATINATION   |  |                                      |                       |           |              |
| LENGTH       | 125  | WIDTH                                | 50                    | THICKNESS |              |
| WEIGHT       |  |                                      |                       |           |              |
| DESCRIPTION  | (dimensions and description after MW catalogue; not to be found in collection) |                                      |                       |           |              |
| PHOTO NO.    |  |                                      |                       |           | PHOTOGRAPHER |
|              |  |                                      |                       |           |              |



CAT. NO.  TYPE  MATERIAL   
DATE FROM  TO

PROVENANCE    
CHART NO.   
PROVENANCE 1   
PROVENANCE 2   
PROVENANCE 3

FINDER NAME   
FIND CAUSE   
FIND DATE

COMPLETENESS   
CONDITION   
PATINATION

LENGTH  WIDTH  THICKNESS  WEIGHT

DESCRIPTION

PHOTO NO.  PHOTOGRAPHER



|              |  |                                |                       |           |              |
|--------------|--|--------------------------------|-----------------------|-----------|--------------|
| CAT. NO.     | 125  | TYPE                           | Unspecified core tool | MATERIAL  | Flint        |
| DATE FROM    | Mesolithic   | TO                             | Mesolithic            |           |              |
| PROVENANCE   | 20   | off Pitts Deep, Sowley, Solent |                       |           |              |
| CHART NO.    | 2040   |                                |                       |           |              |
| PROVENANCE 1 | off Pitts Deep   |                                |                       |           |              |
| PROVENANCE 2 |  |                                |                       |           |              |
| PROVENANCE 3 |  |                                |                       |           |              |
| FINDER NAME  | Stephen White  |                                |                       |           |              |
| FIND CAUSE   | oyster dredging  |                                |                       |           |              |
| FIND DATE    |  |                                |                       |           |              |
| COMPLETENESS | Yes  |                                |                       |           |              |
| CONDITION    |  |                                |                       |           |              |
| PATINATION   |  |                                |                       |           |              |
| LENGTH       | 132  | WIDTH                          | 54                    | THICKNESS |              |
| WEIGHT       |  |                                |                       |           |              |
| DESCRIPTION  | Black (dimensions and description after MW catalogue; not to be found in collection) |                                |                       |           |              |
| PHOTO NO.    |  |                                |                       |           | PHOTOGRAPHER |
|              |  |                                |                       |           |              |

CAT. NO.  TYPE  MATERIAL   
DATE FROM  TO

PROVENANCE    
CHART NO.   
PROVENANCE 1   
PROVENANCE 2   
PROVENANCE 3

FINDER NAME   
FIND CAUSE   
FIND DATE

COMPLETENESS   
CONDITION   
PATINATION

LENGTH  WIDTH  THICKNESS  WEIGHT

DESCRIPTION

PHOTO NO.  PHOTOGRAPHER



CAT. NO.  TYPE  MATERIAL   
DATE FROM  TO

PROVENANCE    
CHART NO.   
PROVENANCE 1   
PROVENANCE 2  
PROVENANCE 3

FINDER NAME   
FIND CAUSE   
FIND DATE

COMPLETENESS   
CONDITION   
PATINATION

LENGTH  WIDTH  THICKNESS  WEIGHT

DESCRIPTION

PHOTO NO.  PHOTOGRAPHER



CAT. NO.  TYPE  MATERIAL   
DATE FROM  TO

PROVENANCE    
CHART NO.   
PROVENANCE 1   
PROVENANCE 2   
PROVENANCE 3

FINDER NAME   
FIND CAUSE   
FIND DATE

COMPLETENESS   
CONDITION   
PATINATION

LENGTH  WIDTH  THICKNESS  WEIGHT   
DESCRIPTION

PHOTO NO.  PHOTOGRAPHER

CAT. NO.  TYPE  MATERIAL   
DATE FROM  TO

PROVENANCE    
CHART NO.   
PROVENANCE 1   
PROVENANCE 2   
PROVENANCE 3

FINDER NAME   
FIND CAUSE   
FIND DATE

COMPLETENESS   
CONDITION   
PATINATION

LENGTH  WIDTH  THICKNESS  WEIGHT

DESCRIPTION

PHOTO NO.  PHOTOGRAPHER



CAT. NO.  TYPE  MATERIAL   
DATE FROM  TO

PROVENANCE    
CHART NO.   
PROVENANCE 1   
PROVENANCE 2   
PROVENANCE 3

FINDER NAME   
FIND CAUSE   
FIND DATE

COMPLETENESS   
CONDITION   
PATINATION

LENGTH  WIDTH  THICKNESS  WEIGHT

DESCRIPTION

PHOTO NO.  PHOTOGRAPHER

CAT. NO.  TYPE  MATERIAL   
DATE FROM  TO

PROVENANCE    
CHART NO.   
PROVENANCE 1   
PROVENANCE 2   
PROVENANCE 3

FINDER NAME   
FIND CAUSE   
FIND DATE

COMPLETENESS   
CONDITION   
PATINATION

LENGTH  WIDTH  THICKNESS  WEIGHT

DESCRIPTION

PHOTO NO.  PHOTOGRAPHER





|           |              |      |            |          |       |
|-----------|--------------|------|------------|----------|-------|
| CAT. NO.  | 132          | TYPE | Blade      | MATERIAL | Flint |
| DATE FROM | Late Glacial | TO   | Bronze Age |          |       |

|              |  |
|--------------|--|
| PROVENANCE   | 52 by Bourne Gap, Stanswood Bay, Calshot, Solent |
| CHART NO.    | 2040   |
| PROVENANCE 1 | in the same area as 131 at Bourne Gap            |
| PROVENANCE 2 | Calshot  |
| PROVENANCE 3 | Southampton Water                                |

|             |                 |
|-------------|-----------------|
| FINDER NAME |                 |
| FIND CAUSE  | oyster dredging |
| FIND DATE   |                 |

|              |             |
|--------------|-------------|
| COMPLETENESS | Yes         |
| CONDITION    | Sharp       |
| PATINATION   | Unpatinated |

|        |    |       |    |           |    |        |    |
|--------|----|-------|----|-----------|----|--------|----|
| LENGTH | 79 | WIDTH | 37 | THICKNESS | 11 | WEIGHT | 34 |
|--------|----|-------|----|-----------|----|--------|----|

|             |   |
|-------------|---|
| DESCRIPTION | Secondary blade, possibly with edge use (although context suggests this might be unwise). Probably soft hammer. Could well be Late Glacial. |
|-------------|---|

|           |  |              |     |
|-----------|--|--------------|-----|
| PHOTO NO. | R0010288, R0010227, R0010228, R0010264 | PHOTOGRAPHER | MHT |
|-----------|--|--------------|-----|



CAT. NO.  TYPE  MATERIAL   
DATE FROM  TO

PROVENANCE    
CHART NO.   
PROVENANCE 1   
PROVENANCE 2  
PROVENANCE 3

FINDER NAME   
FIND CAUSE   
FIND DATE

COMPLETENESS

CONDITION

PATINATION

LENGTH  WIDTH  THICKNESS  WEIGHT

DESCRIPTION

PHOTO NO. PHOTOGRAPHER

CAT. NO.  TYPE  MATERIAL   
DATE FROM  TO

PROVENANCE    
CHART NO.   
PROVENANCE 1   
PROVENANCE 2   
PROVENANCE 3

FINDER NAME   
FIND CAUSE   
FIND DATE

COMPLETENESS   
CONDITION   
PATINATION

LENGTH  WIDTH  THICKNESS  WEIGHT

DESCRIPTION

PHOTO NO.  PHOTOGRAPHER



|              |  |              |                                    |           |           |
|--------------|--|--------------|------------------------------------|-----------|-----------|
| CAT. NO.     | 135  | TYPE         | Perforated mace head/pebble hammer | MATERIAL  | Uncertain |
| DATE FROM    | ?Mesolithic  | TO           | Early Bronze Age                   |           |           |
| PROVENANCE   | 13 east of Newtown, IOW, Solent  |              |                                    |           |           |
| CHART NO.    | 2021   |              |                                    |           |           |
| PROVENANCE 1 | to the east of Newtown   |              |                                    |           |           |
| PROVENANCE 2 |  |              |                                    |           |           |
| PROVENANCE 3 |  |              |                                    |           |           |
| FINDER NAME  | Stephen White  |              |                                    |           |           |
| FIND CAUSE   | oyster dredging  |              |                                    |           |           |
| FIND DATE    |  |              |                                    |           |           |
| COMPLETENESS |  |              |                                    |           |           |
| CONDITION    | Sharp  |              |                                    |           |           |
| PATINATION   | Unpatinated  |              |                                    |           |           |
| LENGTH       | 90   | WIDTH        | 73                                 | THICKNESS | 17        |
| WEIGHT       | 171  |              |                                    |           |           |
| DESCRIPTION  | Perforated pebble mace head/pebble hammer, with hour glass perforation |              |                                    |           |           |
| PHOTO NO.    | R0010061   | PHOTOGRAPHER | MHT                                |           |           |



|              |   |                          |            |              |                         |
|--------------|---|--------------------------|------------|--------------|-------------------------|
| CAT. NO.     | 136   | TYPE                     | ?Pick/axe  | MATERIAL     | Uncertain<br>?quartzite |
| DATE FROM    | Mesolithic  | TO                       | Mesolithic |              |                         |
| PROVENANCE   | 45  | off Tanners Lane, Solent |            |              |                         |
| CHART NO.    | 2040  |                          |            |              |                         |
| PROVENANCE 1 | at Tanners Lane   |                          |            |              |                         |
| PROVENANCE 2 |   |                          |            |              |                         |
| PROVENANCE 3 |   |                          |            |              |                         |
| FINDER NAME  | Stephen White   |                          |            |              |                         |
| FIND CAUSE   | oyster dredging   |                          |            |              |                         |
| FIND DATE    |   |                          |            |              |                         |
| COMPLETENESS | Yes   |                          |            |              |                         |
| CONDITION    | Slightly rolled   |                          |            |              |                         |
| PATINATION   | Stained   |                          |            |              |                         |
| LENGTH       | 142   | WIDTH                    | 47         | THICKNESS    | 39                      |
| WEIGHT       | 301   |                          |            |              |                         |
| DESCRIPTION  | Irregular cylindrical nodule, now with triangular section.<br>Difficult to assess. Natural rolled butt contrasts with flake scars on body and suggests it might be genuine. |                          |            |              |                         |
| PHOTO NO.    | R0010108  |                          |            | PHOTOGRAPHER | MHT                     |



|              |  |                       |                       |           |              |
|--------------|--|-----------------------|-----------------------|-----------|--------------|
| CAT. NO.     | 137  | TYPE                  | Unspecified core tool | MATERIAL  | Flint        |
| DATE FROM    | Mesolithic   | TO                    | Mesolithic            |           |              |
| PROVENANCE   | 6  | Stanswood Bay, Solent |                       |           |              |
| CHART NO.    | 2040   |                       |                       |           |              |
| PROVENANCE 1 | Stanswood Bay  |                       |                       |           |              |
| PROVENANCE 2 |  |                       |                       |           |              |
| PROVENANCE 3 |  |                       |                       |           |              |
| FINDER NAME  | Wayne  |                       |                       |           |              |
| FIND CAUSE   | oyster dredging  |                       |                       |           |              |
| FIND DATE    |  |                       |                       |           |              |
| COMPLETENESS | Yes  |                       |                       |           |              |
| CONDITION    |  |                       |                       |           |              |
| PATINATION   |  |                       |                       |           |              |
| LENGTH       | 212  | WIDTH                 | 60                    | THICKNESS |              |
| WEIGHT       |  |                       |                       |           |              |
| DESCRIPTION  | Fawn coloured (dimensions and description after MW catalogue; not to be found in collection) |                       |                       |           |              |
| PHOTO NO.    |  |                       |                       |           | PHOTOGRAPHER |
|              |  |                       |                       |           |              |

CAT. NO.  TYPE  MATERIAL   
DATE FROM  TO

PROVENANCE    
CHART NO.   
PROVENANCE 1   
PROVENANCE 2   
PROVENANCE 3

FINDER NAME   
FIND CAUSE   
FIND DATE

COMPLETENESS

CONDITION

PATINATION

LENGTH  WIDTH  THICKNESS  WEIGHT

DESCRIPTION

PHOTO NO.  PHOTOGRAPHER

CAT. NO.  TYPE  MATERIAL   
DATE FROM  TO

PROVENANCE    
CHART NO.   
PROVENANCE 1   
PROVENANCE 2   
PROVENANCE 3

FINDER NAME   
FIND CAUSE   
FIND DATE

COMPLETENESS   
CONDITION   
PATINATION

LENGTH  WIDTH  THICKNESS  WEIGHT

DESCRIPTION

PHOTO NO.  PHOTOGRAPHER





|              |   |   |              |           |       |
|--------------|---|---|--------------|-----------|-------|
| CAT. NO.     | 139   | TYPE  | Tranchet axe | MATERIAL  | Flint |
| DATE FROM    | Mesolithic  | TO  | Mesolithic   |           |       |
| PROVENANCE   | 24  | on the corner of Oxey Lake and Mystery Lake, Solent |              |           |       |
| CHART NO.    | 2040  |   |              |           |       |
| PROVENANCE 1 | off Mystery Lake  |   |              |           |       |
| PROVENANCE 2 | Pennington  |   |              |           |       |
| PROVENANCE 3 |   |   |              |           |       |
| FINDER NAME  | Stephen & Phillip White   |   |              |           |       |
| FIND CAUSE   | oyster dredging   |   |              |           |       |
| FIND DATE    |   |   |              |           |       |
| COMPLETENESS | Yes   |   |              |           |       |
| CONDITION    | Sharp   |   |              |           |       |
| PATINATION   | Unpatinated   |   |              |           |       |
| LENGTH       | 157   | WIDTH   | 60           | THICKNESS | 43    |
| WEIGHT       | 510   |   |              |           |       |
| DESCRIPTION  | Plano convex, irregular square section. Double tranchet tip. Butt unworked surface of gravel nodule. Distinctive red stain. |   |              |           |       |
| PHOTO NO.    | R0010105  | PHOTOGRAPHER  | MHT          |           |       |



CAT. NO.  TYPE  MATERIAL   
DATE FROM  TO

PROVENANCE    
CHART NO.   
PROVENANCE 1   
PROVENANCE 2  
PROVENANCE 3

FINDER NAME   
FIND CAUSE   
FIND DATE

COMPLETENESS   
CONDITION   
PATINATION

LENGTH  WIDTH  THICKNESS  WEIGHT

DESCRIPTION

PHOTO NO.  PHOTOGRAPHER



CAT. NO.  TYPE  MATERIAL   
DATE FROM  TO

PROVENANCE    
CHART NO.   
PROVENANCE 1

PROVENANCE 2  
PROVENANCE 3

FINDER NAME   
FIND CAUSE   
FIND DATE

COMPLETENESS

CONDITION  
PATINATION

LENGTH  WIDTH  THICKNESS  WEIGHT

DESCRIPTION

PHOTO NO. PHOTOGRAPHER

CAT. NO.  TYPE  MATERIAL   
DATE FROM  TO

PROVENANCE    
CHART NO.   
PROVENANCE 1   
PROVENANCE 2   
PROVENANCE 3

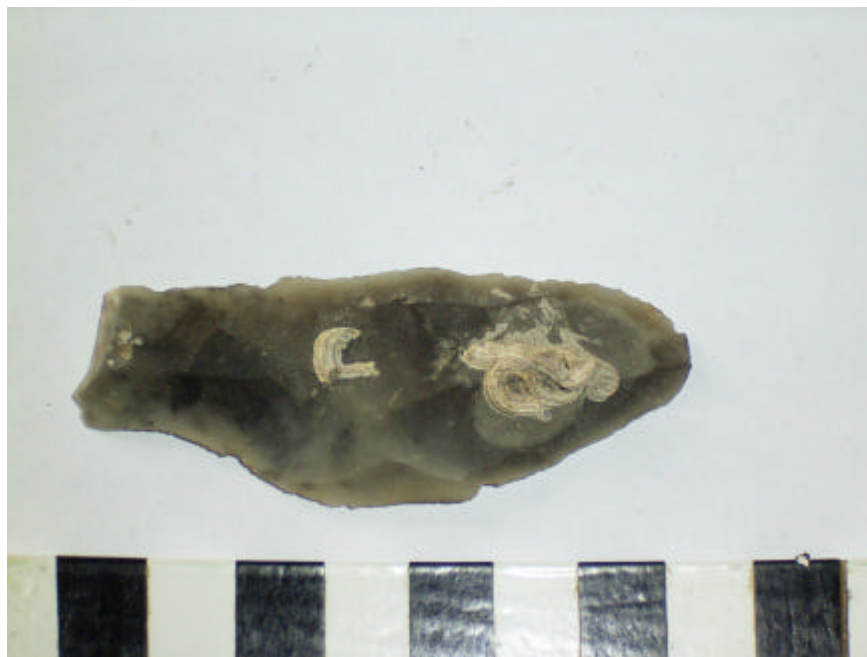
FINDER NAME   
FIND CAUSE   
FIND DATE

COMPLETENESS   
CONDITION   
PATINATION

LENGTH  WIDTH  THICKNESS  WEIGHT

DESCRIPTION

PHOTO NO.  PHOTOGRAPHER



CAT. NO.  TYPE  MATERIAL   
DATE FROM  TO

PROVENANCE    
CHART NO.   
PROVENANCE 1   
PROVENANCE 2   
PROVENANCE 3

FINDER NAME   
FIND CAUSE   
FIND DATE

COMPLETENESS

CONDITION

PATINATION

LENGTH  WIDTH  THICKNESS  WEIGHT

DESCRIPTION

PHOTO NO. PHOTOGRAPHER

|              |  |       |              |              |         |
|--------------|--|-------|--------------|--------------|---------|
| CAT. NO.     | 144  | TYPE  | Polished axe | MATERIAL     | ?Jadite |
| DATE FROM    | Neolithic  | TO    | ?            |              |         |
| PROVENANCE   | 53 beach by Cut Bridge, Milford on Sea; presumed ex situ |       |              |              |         |
| CHART NO.    |  |       |              |              |         |
| PROVENANCE 1 | on the beach   |       |              |              |         |
| PROVENANCE 2 | by Cut (?) Bridge M.O.S.                                 |       |              |              |         |
| PROVENANCE 3 | possibly brought in a load of gravel for beach repairs   |       |              |              |         |
| FINDER NAME  | Ann Taylor   |       |              |              |         |
| FIND CAUSE   |  |       |              |              |         |
| FIND DATE    |  |       |              |              |         |
| COMPLETENESS | Yes  |       |              |              |         |
| CONDITION    | Mint   |       |              |              |         |
| PATINATION   | Unpatinated  |       |              |              |         |
| LENGTH       | 57   | WIDTH | 34           | THICKNESS    | 19      |
| WEIGHT       | 58   |       |              |              |         |
| DESCRIPTION  | Small well made ?jadeite axe. ?prehistoric or ethno      |       |              |              |         |
| PHOTO NO.    | R0010058   |       |              | PHOTOGRAPHER | MHT     |



CAT. NO.  TYPE  MATERIAL   
DATE FROM  TO

PROVENANCE    
CHART NO.   
PROVENANCE 1   
PROVENANCE 2   
PROVENANCE 3

FINDER NAME   
FIND CAUSE   
FIND DATE

COMPLETENESS   
CONDITION   
PATINATION

LENGTH  WIDTH  THICKNESS  WEIGHT

DESCRIPTION

PHOTO NO.  PHOTOGRAPHER



CAT. NO.  TYPE  MATERIAL   
DATE FROM  TO

PROVENANCE    
CHART NO.   
PROVENANCE 1   
PROVENANCE 2   
PROVENANCE 3

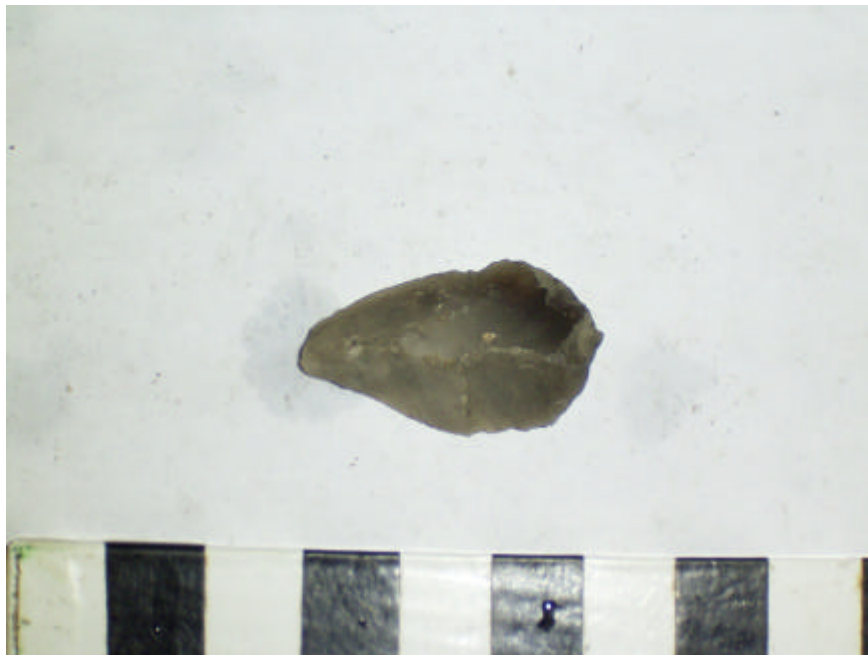
FINDER NAME   
FIND CAUSE   
FIND DATE

COMPLETENESS   
CONDITION   
PATINATION

LENGTH  WIDTH  THICKNESS  WEIGHT

DESCRIPTION

PHOTO NO.  PHOTOGRAPHER





CAT. NO.  TYPE  MATERIAL   
DATE FROM  TO

PROVENANCE    
CHART NO.   
PROVENANCE 1   
PROVENANCE 2  
PROVENANCE 3

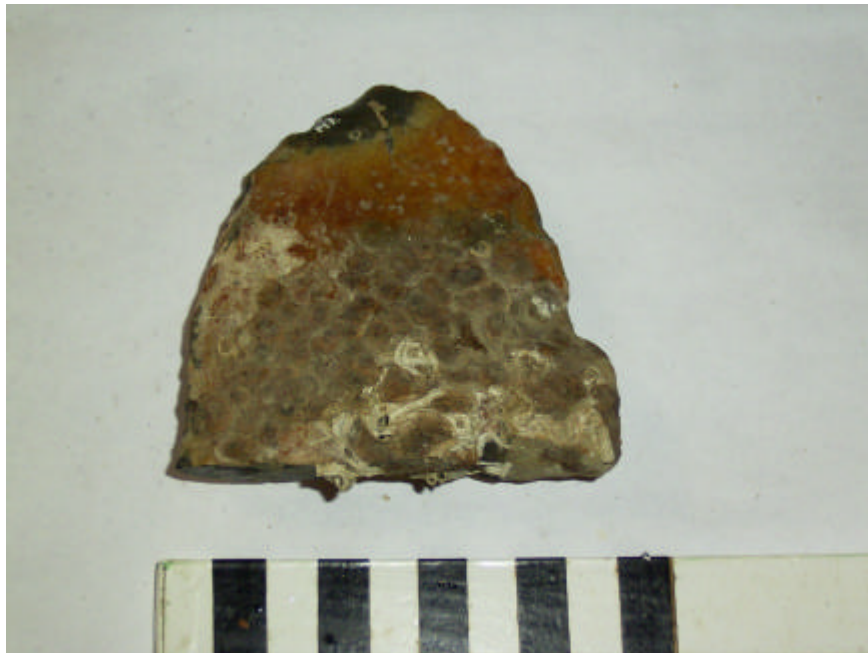
FINDER NAME   
FIND CAUSE   
FIND DATE

COMPLETENESS   
CONDITION   
PATINATION

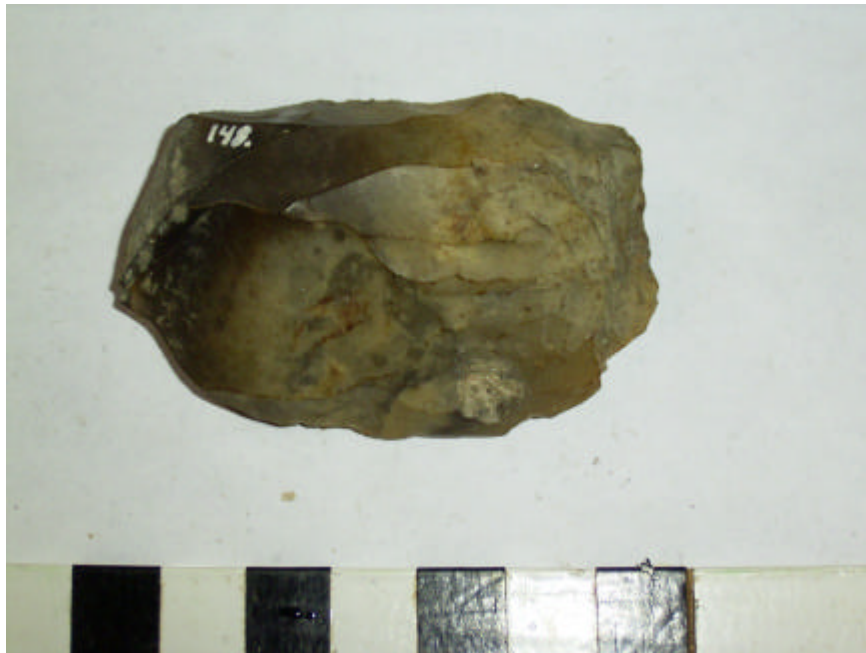
LENGTH  WIDTH  THICKNESS  WEIGHT

DESCRIPTION

PHOTO NO.  PHOTOGRAPHER



|              |  |              |           |           |       |
|--------------|--|--------------|-----------|-----------|-------|
| CAT. NO.     | 148  | TYPE         | Flake     | MATERIAL  | Flint |
| DATE FROM    | Late Glacial   | TO           | Neolithic |           |       |
| PROVENANCE   | 3 Chilling, Southampton Water  |              |           |           |       |
| CHART NO.    | 2036   |              |           |           |       |
| PROVENANCE 1 | Chilling   |              |           |           |       |
| PROVENANCE 2 | Southampton Water East   |              |           |           |       |
| PROVENANCE 3 |  |              |           |           |       |
| FINDER NAME  | Stephen & Phillip White  |              |           |           |       |
| FIND CAUSE   | oyster dredging  |              |           |           |       |
| FIND DATE    |  |              |           |           |       |
| COMPLETENESS | Yes  |              |           |           |       |
| CONDITION    | Sharp  |              |           |           |       |
| PATINATION   | Unpatinated  |              |           |           |       |
| LENGTH       | 61   | WIDTH        | 41        | THICKNESS | 14    |
| WEIGHT       | 45   |              |           |           |       |
| DESCRIPTION  | Large trimming/rejuvenation flake from single platform ?blade core. Undated but large size and soft hammer suggests early. |              |           |           |       |
| PHOTO NO.    | R0010159   | PHOTOGRAPHER | MHT       |           |       |



CAT. NO.  TYPE  MATERIAL   
DATE FROM  TO

PROVENANCE    
CHART NO.   
PROVENANCE 1   
PROVENANCE 2   
PROVENANCE 3

FINDER NAME   
FIND CAUSE   
FIND DATE

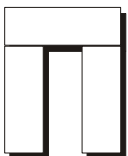
COMPLETENESS

CONDITION  
PATINATION

LENGTH  WIDTH  THICKNESS  WEIGHT

DESCRIPTION

PHOTO NO.  PHOTOGRAPHER



THE TRUST FOR WESSEX ARCHAEOLOGY LTD.  
Portway House, Old Sarum Park, Salisbury, Wiltshire SP4 6EB  
Tel:(01722) 326867 Fax:(01722) 337562  
E-mail:info@wessexarch.co.uk www.wessexarch.co.uk  
Registered as an archaeological organisation with the Institute of Field Archaeologists  
Registered Charity No. 287786. A company with limited liability registered in England No. 1712772