

CAT. NO. TYPE MATERIAL
DATE FROM TO

PROVENANCE
CHART NO.
PROVENANCE 1
PROVENANCE 2
PROVENANCE 3

FINDER NAME
FIND CAUSE
FIND DATE

COMPLETENESS
CONDITION
PATINATION

LENGTH WIDTH THICKNESS WEIGHT

DESCRIPTION

PHOTO NO. PHOTOGRAPHER



CAT. NO. TYPE MATERIAL
DATE FROM TO

PROVENANCE
CHART NO.
PROVENANCE 1
PROVENANCE 2
PROVENANCE 3

FINDER NAME
FIND CAUSE
FIND DATE

COMPLETENESS

CONDITION

PATINATION

LENGTH WIDTH THICKNESS WEIGHT

DESCRIPTION

PHOTO NO. PHOTOGRAPHER

CAT. NO. TYPE MATERIAL
DATE FROM TO

PROVENANCE
CHART NO.
PROVENANCE 1
PROVENANCE 2
PROVENANCE 3

FINDER NAME
FIND CAUSE
FIND DATE

COMPLETENESS
CONDITION
PATINATION

LENGTH WIDTH THICKNESS WEIGHT

DESCRIPTION

PHOTO NO. PHOTOGRAPHER



CAT. NO. TYPE MATERIAL
 DATE FROM TO

PROVENANCE
 CHART NO.
 PROVENANCE 1
 PROVENANCE 2
 PROVENANCE 3

FINDER NAME
 FIND CAUSE
 FIND DATE

COMPLETENESS
 CONDITION
 PATINATION

LENGTH WIDTH THICKNESS WEIGHT

DESCRIPTION

PHOTO NO. PHOTOGRAPHER



CAT. NO. TYPE MATERIAL
DATE FROM TO

PROVENANCE
CHART NO.
PROVENANCE 1
PROVENANCE 2
PROVENANCE 3

FINDER NAME
FIND CAUSE
FIND DATE

COMPLETENESS
CONDITION
PATINATION

LENGTH WIDTH THICKNESS WEIGHT
DESCRIPTION

PHOTO NO. PHOTOGRAPHER



CAT. NO. TYPE MATERIAL
DATE FROM TO

PROVENANCE
CHART NO.
PROVENANCE 1
PROVENANCE 2
PROVENANCE 3

FINDER NAME
FIND CAUSE
FIND DATE

COMPLETENESS
CONDITION
PATINATION

LENGTH WIDTH THICKNESS WEIGHT
DESCRIPTION

PHOTO NO. PHOTOGRAPHER



CAT. NO. TYPE MATERIAL
DATE FROM TO

PROVENANCE
CHART NO.
PROVENANCE 1
PROVENANCE 2
PROVENANCE 3

FINDER NAME
FIND CAUSE
FIND DATE

COMPLETENESS

CONDITION
PATINATION

LENGTH WIDTH THICKNESS WEIGHT

DESCRIPTION

PHOTO NO. PHOTOGRAPHER

CAT. NO. TYPE MATERIAL
 DATE FROM TO

PROVENANCE
 CHART NO.
 PROVENANCE 1
 PROVENANCE 2
 PROVENANCE 3

FINDER NAME
 FIND CAUSE
 FIND DATE

COMPLETENESS
 CONDITION
 PATINATION

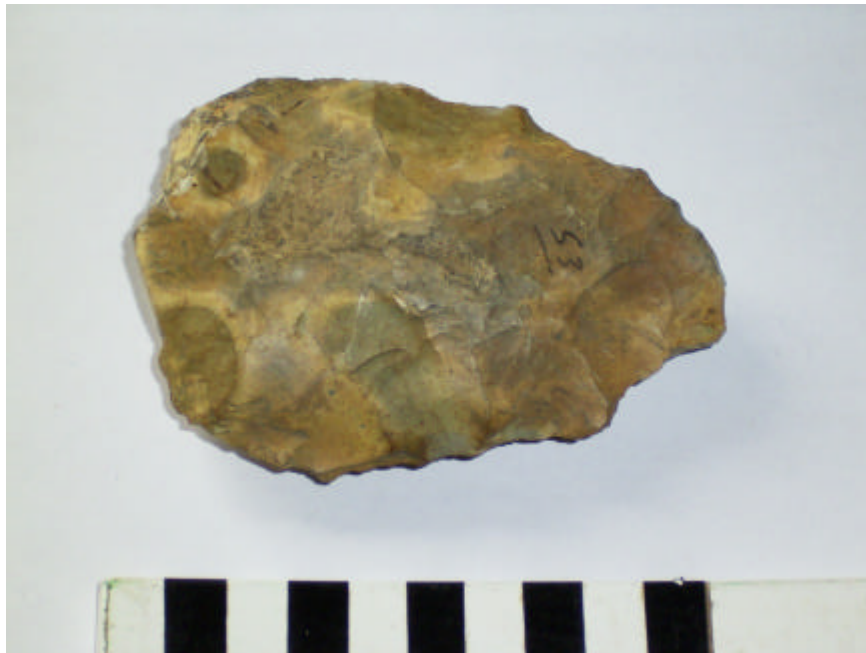
LENGTH WIDTH THICKNESS WEIGHT

DESCRIPTION

PHOTO NO. PHOTOGRAPHER



| | | | | | |
|--------------|--|------------------|--------------|-----------|-------|
| CAT. NO. | 53 | TYPE | Handaxe | MATERIAL | Flint |
| DATE FROM | Lower Palaeolithic | TO | Palaeolithic | | |
| PROVENANCE | 55 | near Basingstoke | | | |
| CHART NO. | | | | | |
| PROVENANCE 1 | near Basingstoke | | | | |
| PROVENANCE 2 | | | | | |
| PROVENANCE 3 | | | | | |
| FINDER NAME | | | | | |
| FIND CAUSE | | | | | |
| FIND DATE | | | | | |
| COMPLETENESS | Yes | | | | |
| CONDITION | Slightly rolled | | | | |
| PATINATION | Stained | | | | |
| LENGTH | 102 | WIDTH | 70 | THICKNESS | 32 |
| WEIGHT | 227 | | | | |
| DESCRIPTION | Nice thick butted cordate, rounded tip. Made on gravel flint. Nat flint grey. | | | | |
| PHOTO NO. | R0010054 | PHOTOGRAPHER | MHT | | |



| | | | | | |
|--------------|--|------------------|----------|-------------|--------------|
| CAT. NO. | 54 | TYPE | ?Handaxe | MATERIAL | Flint |
| DATE FROM | Prehistoric | | TO | Prehistoric | |
| PROVENANCE | 55 | near Basingstoke | | | |
| CHART NO. | | | | | |
| PROVENANCE 1 | near Basingstoke | | | | |
| PROVENANCE 2 | | | | | |
| PROVENANCE 3 | | | | | |
| FINDER NAME | | | | | |
| FIND CAUSE | | | | | |
| FIND DATE | | | | | |
| COMPLETENESS | Yes | | | | |
| CONDITION | | | | | |
| PATINATION | | | | | |
| LENGTH | 65 | WIDTH | 35 | THICKNESS | |
| WEIGHT | | | | | |
| DESCRIPTION | Small handaxe (dimensions and description after MW catalogue; not to be found in collection) | | | | |
| PHOTO NO. | | | | | PHOTOGRAPHER |
| | | | | | |

CAT. NO. TYPE MATERIAL
DATE FROM TO

PROVENANCE
CHART NO.
PROVENANCE 1
PROVENANCE 2
PROVENANCE 3

FINDER NAME
FIND CAUSE
FIND DATE

COMPLETENESS
CONDITION
PATINATION

LENGTH WIDTH THICKNESS WEIGHT

DESCRIPTION

PHOTO NO. PHOTOGRAPHER



CAT. NO. TYPE MATERIAL
DATE FROM TO

PROVENANCE
CHART NO.
PROVENANCE 1

PROVENANCE 2
PROVENANCE 3

FINDER NAME
FIND CAUSE
FIND DATE

COMPLETENESS

CONDITION
PATINATION

LENGTH WIDTH THICKNESS WEIGHT

DESCRIPTION

PHOTO NO. PHOTOGRAPHER

CAT. NO. TYPE MATERIAL
DATE FROM TO

PROVENANCE
CHART NO.
PROVENANCE 1
PROVENANCE 2
PROVENANCE 3

FINDER NAME
FIND CAUSE
FIND DATE

COMPLETENESS

CONDITION

PATINATION

LENGTH WIDTH THICKNESS WEIGHT

DESCRIPTION

PHOTO NO. PHOTOGRAPHER

CAT. NO. TYPE MATERIAL
DATE FROM TO

PROVENANCE
CHART NO.
PROVENANCE 1
PROVENANCE 2
PROVENANCE 3

FINDER NAME
FIND CAUSE
FIND DATE

COMPLETENESS
CONDITION
PATINATION

LENGTH WIDTH THICKNESS WEIGHT

DESCRIPTION

PHOTO NO. PHOTOGRAPHER



| | | | | | |
|--------------|--|--|--------------------------------|-----------|-------|
| CAT. NO. | 59 | TYPE | Reworked polished flint axe | MATERIAL | Flint |
| DATE FROM | Early Neolithic | TO | Early Neolithic | | |
| PROVENANCE | 57 | Rustington Farm, below Highdown, Ferring | | | |
| CHART NO. | | | | | |
| PROVENANCE 1 | on Joyce's field | | | | |
| PROVENANCE 2 | at Ferring | | | | |
| PROVENANCE 3 | below Highdown | | | | |
| FINDER NAME | | | | | |
| FIND CAUSE | | | | | |
| FIND DATE | | | | | |
| COMPLETENESS | Yes | | | | |
| CONDITION | Slightly rolled | | | | |
| PATINATION | Patinated | | | | |
| LENGTH | 66 | WIDTH | 39 | THICKNESS | 22 |
| WEIGHT | 62 | | | | |
| DESCRIPTION | Reworked butt of Neolithic ground axe. | | | | |
| PHOTO NO. | R0010158 | PHOTOGRAPHER | MHT | | |



CAT. NO. TYPE MATERIAL
DATE FROM TO

PROVENANCE
CHART NO.
PROVENANCE 1
PROVENANCE 2
PROVENANCE 3

FINDER NAME
FIND CAUSE
FIND DATE

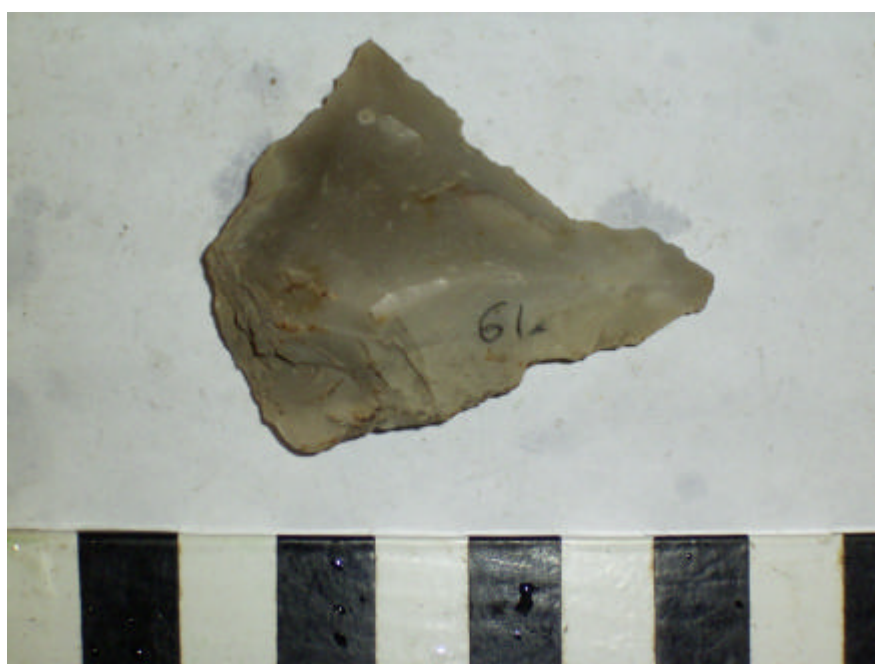
COMPLETENESS
CONDITION
PATINATION

LENGTH WIDTH THICKNESS WEIGHT
DESCRIPTION

PHOTO NO. PHOTOGRAPHER



| | | | | | |
|--------------|---|--------------|------------|-----------|-------|
| CAT. NO. | 61 | TYPE | Flake | MATERIAL | Flint |
| DATE FROM | Neolithic | TO | Bronze Age | | |
| PROVENANCE | 57 Rustington Farm, below Highdown, Ferring | | | | |
| CHART NO. | | | | | |
| PROVENANCE 1 | at Ferring | | | | |
| PROVENANCE 2 | below Highdown | | | | |
| PROVENANCE 3 | | | | | |
| FINDER NAME | Joyce Kingsley | | | | |
| FIND CAUSE | | | | | |
| FIND DATE | | | | | |
| COMPLETENESS | Yes | | | | |
| CONDITION | Slightly rolled | | | | |
| PATINATION | Unpatinated | | | | |
| LENGTH | 51 | WIDTH | 41 | THICKNESS | 12 |
| WEIGHT | 18 | | | | |
| DESCRIPTION | Undiagnostic flint flake | | | | |
| PHOTO NO. | R0010258 | PHOTOGRAPHER | MHT | | |



| | | | | | |
|--------------|--|----------|---------------|-----------|--------------|
| CAT. NO. | 62 | TYPE | Spindle whorl | MATERIAL | |
| DATE FROM | (?)Saxon | TO | (?)Saxon | | |
| PROVENANCE | 58 | Cornwall | | | |
| CHART NO. | | | | | |
| PROVENANCE 1 | Cornwall | | | | |
| PROVENANCE 2 | | | | | |
| PROVENANCE 3 | | | | | |
| FINDER NAME | Jim Bulger | | | | |
| FIND CAUSE | | | | | |
| FIND DATE | | | | | |
| COMPLETENESS | Yes | | | | |
| CONDITION | | | | | |
| PATINATION | | | | | |
| LENGTH | 26 | WIDTH | 26 | THICKNESS | |
| WEIGHT | | | | | |
| DESCRIPTION | (dimensions and description after MW catalogue; not to be found in collection) | | | | |
| PHOTO NO. | | | | | PHOTOGRAPHER |
| | | | | | |

CAT. NO. TYPE MATERIAL
DATE FROM TO

PROVENANCE
CHART NO.
PROVENANCE 1
PROVENANCE 2
PROVENANCE 3

FINDER NAME
FIND CAUSE
FIND DATE

COMPLETENESS
CONDITION
PATINATION

LENGTH WIDTH THICKNESS WEIGHT

DESCRIPTION

PHOTO NO. PHOTOGRAPHER



CAT. NO. TYPE MATERIAL
 DATE FROM TO

PROVENANCE
 CHART NO.
 PROVENANCE 1
 PROVENANCE 2
 PROVENANCE 3

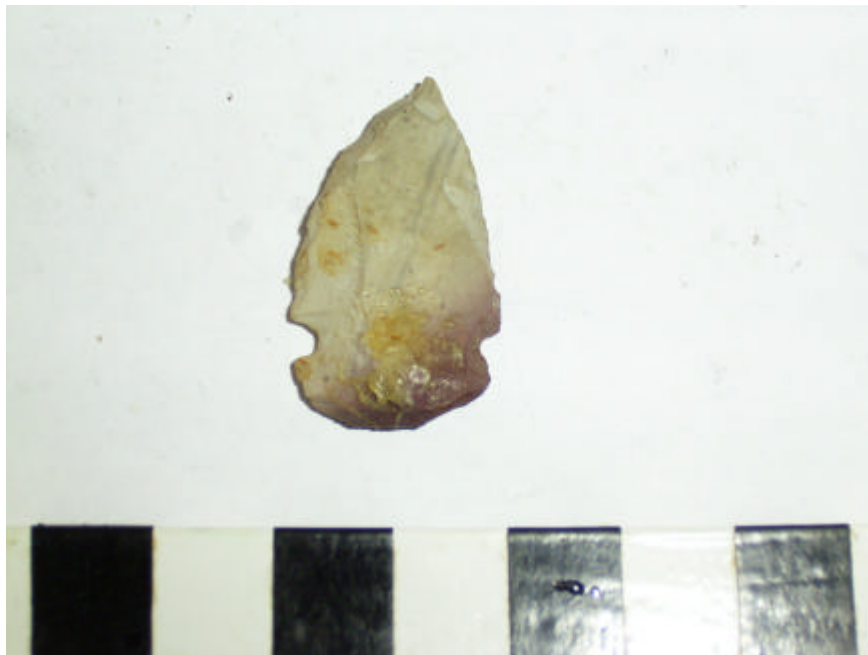
FINDER NAME
 FIND CAUSE
 FIND DATE

COMPLETENESS
 CONDITION
 PATINATION

LENGTH WIDTH THICKNESS WEIGHT

DESCRIPTION

PHOTO NO. PHOTOGRAPHER



CAT. NO. TYPE MATERIAL
 DATE FROM TO

PROVENANCE
 CHART NO.
 PROVENANCE 1
 PROVENANCE 2
 PROVENANCE 3

FINDER NAME
 FIND CAUSE
 FIND DATE

COMPLETENESS
 CONDITION
 PATINATION

LENGTH WIDTH THICKNESS WEIGHT

DESCRIPTION

PHOTO NO. PHOTOGRAPHER



CAT. NO. TYPE MATERIAL
DATE FROM TO

PROVENANCE
CHART NO.
PROVENANCE 1
PROVENANCE 2
PROVENANCE 3

FINDER NAME
FIND CAUSE
FIND DATE

COMPLETENESS
CONDITION
PATINATION

LENGTH WIDTH THICKNESS WEIGHT

DESCRIPTION

PHOTO NO. PHOTOGRAPHER



CAT. NO. TYPE MATERIAL
DATE FROM TO

PROVENANCE
CHART NO.
PROVENANCE 1
PROVENANCE 2
PROVENANCE 3

FINDER NAME
FIND CAUSE
FIND DATE

COMPLETENESS
CONDITION
PATINATION

LENGTH WIDTH THICKNESS WEIGHT

DESCRIPTION

PHOTO NO. PHOTOGRAPHER



CAT. NO. TYPE MATERIAL
DATE FROM TO

PROVENANCE
CHART NO.
PROVENANCE 1
PROVENANCE 2
PROVENANCE 3

FINDER NAME
FIND CAUSE
FIND DATE

COMPLETENESS

CONDITION
PATINATION

LENGTH WIDTH THICKNESS WEIGHT

DESCRIPTION

PHOTO NO. PHOTOGRAPHER

CAT. NO. TYPE MATERIAL
 DATE FROM TO

PROVENANCE
 CHART NO.
 PROVENANCE 1
 PROVENANCE 2
 PROVENANCE 3

FINDER NAME
 FIND CAUSE
 FIND DATE

COMPLETENESS
 CONDITION
 PATINATION

LENGTH WIDTH THICKNESS WEIGHT

DESCRIPTION

PHOTO NO. PHOTOGRAPHER



CAT. NO. TYPE MATERIAL
 DATE FROM TO

PROVENANCE
 CHART NO.
 PROVENANCE 1
 PROVENANCE 2
 PROVENANCE 3

FINDER NAME
 FIND CAUSE
 FIND DATE

COMPLETENESS
 CONDITION
 PATINATION

LENGTH WIDTH THICKNESS WEIGHT

DESCRIPTION

PHOTO NO. PHOTOGRAPHER



CAT. NO. TYPE MATERIAL
 DATE FROM TO

PROVENANCE
 CHART NO.
 PROVENANCE 1
 PROVENANCE 2
 PROVENANCE 3

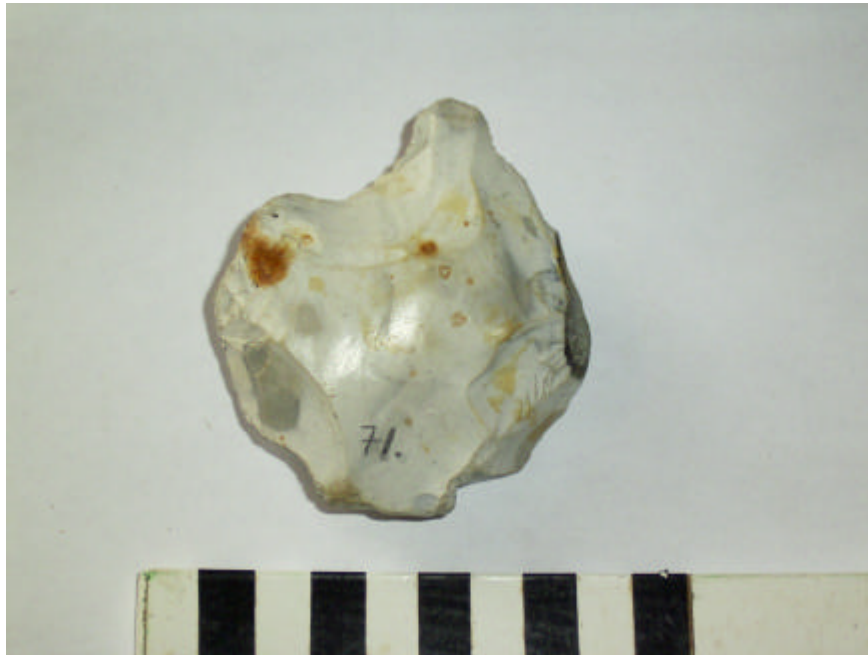
FINDER NAME
 FIND CAUSE
 FIND DATE

COMPLETENESS
 CONDITION
 PATINATION

LENGTH WIDTH THICKNESS WEIGHT

DESCRIPTION

PHOTO NO. PHOTOGRAPHER



CAT. NO. TYPE MATERIAL
DATE FROM TO

PROVENANCE
CHART NO.
PROVENANCE 1
PROVENANCE 2
PROVENANCE 3

FINDER NAME
FIND CAUSE
FIND DATE

COMPLETENESS
CONDITION
PATINATION
LENGTH WIDTH THICKNESS WEIGHT

DESCRIPTION

PHOTO NO. PHOTOGRAPHER

CAT. NO. TYPE MATERIAL
DATE FROM TO

PROVENANCE
CHART NO.
PROVENANCE 1
PROVENANCE 2
PROVENANCE 3

FINDER NAME
FIND CAUSE
FIND DATE

COMPLETENESS

CONDITION

PATINATION

LENGTH WIDTH THICKNESS WEIGHT

DESCRIPTION

PHOTO NO. PHOTOGRAPHER

| | | | | | |
|--------------|-------------------------------|--------------|-------------------|-----------|-------|
| CAT. NO. | 74 | TYPE | Ground edge knife | MATERIAL | Flint |
| DATE FROM | Late Neolithic | TO | Late Neolithic | | |
| PROVENANCE | unprovenanced | | | | |
| CHART NO. | | | | | |
| PROVENANCE 1 | bought at car boot sale | | | | |
| PROVENANCE 2 | | | | | |
| PROVENANCE 3 | | | | | |
| FINDER NAME | | | | | |
| FIND CAUSE | | | | | |
| FIND DATE | | | | | |
| COMPLETENESS | Yes | | | | |
| CONDITION | Sharp | | | | |
| PATINATION | Unpatinated | | | | |
| LENGTH | 62 | WIDTH | 56 | THICKNESS | 8 |
| WEIGHT | 25 | | | | |
| DESCRIPTION | Flake knife with ground edges | | | | |
| PHOTO NO. | R0010060 | PHOTOGRAPHER | MHT | | |



CAT. NO. TYPE MATERIAL
 DATE FROM TO

PROVENANCE
 CHART NO.
 PROVENANCE 1
 PROVENANCE 2
 PROVENANCE 3

FINDER NAME
 FIND CAUSE
 FIND DATE

COMPLETENESS
 CONDITION
 PATINATION

LENGTH WIDTH THICKNESS WEIGHT

DESCRIPTION

PHOTO NO. PHOTOGRAPHER



CAT. NO. TYPE MATERIAL
DATE FROM TO

PROVENANCE
CHART NO.
PROVENANCE 1
PROVENANCE 2
PROVENANCE 3

FINDER NAME
FIND CAUSE
FIND DATE

COMPLETENESS
CONDITION
PATINATION

LENGTH WIDTH THICKNESS WEIGHT

DESCRIPTION

PHOTO NO. PHOTOGRAPHER



CAT. NO. TYPE MATERIAL
 DATE FROM TO

PROVENANCE
 CHART NO.
 PROVENANCE 1
 PROVENANCE 2
 PROVENANCE 3

FINDER NAME
 FIND CAUSE
 FIND DATE

COMPLETENESS
 CONDITION
 PATINATION

LENGTH WIDTH THICKNESS WEIGHT

DESCRIPTION

PHOTO NO. PHOTOGRAPHER



CAT. NO. TYPE MATERIAL
 DATE FROM TO

PROVENANCE
 CHART NO.
 PROVENANCE 1
 PROVENANCE 2
 PROVENANCE 3

FINDER NAME
 FIND CAUSE
 FIND DATE

COMPLETENESS
 CONDITION
 PATINATION

LENGTH WIDTH THICKNESS WEIGHT

DESCRIPTION

PHOTO NO. PHOTOGRAPHER



CAT. NO. TYPE MATERIAL
 DATE FROM TO

PROVENANCE
 CHART NO.
 PROVENANCE 1
 PROVENANCE 2
 PROVENANCE 3

FINDER NAME
 FIND CAUSE
 FIND DATE

COMPLETENESS
 CONDITION
 PATINATION

LENGTH WIDTH THICKNESS WEIGHT

DESCRIPTION

PHOTO NO. PHOTOGRAPHER



CAT. NO. TYPE MATERIAL
DATE FROM TO

PROVENANCE
CHART NO.
PROVENANCE 1
PROVENANCE 2
PROVENANCE 3

FINDER NAME
FIND CAUSE
FIND DATE

COMPLETENESS

CONDITION
PATINATION

LENGTH WIDTH THICKNESS WEIGHT

DESCRIPTION

PHOTO NO. PHOTOGRAPHER

CAT. NO. TYPE MATERIAL
 DATE FROM TO

PROVENANCE
 CHART NO.
 PROVENANCE 1
 PROVENANCE 2
 PROVENANCE 3

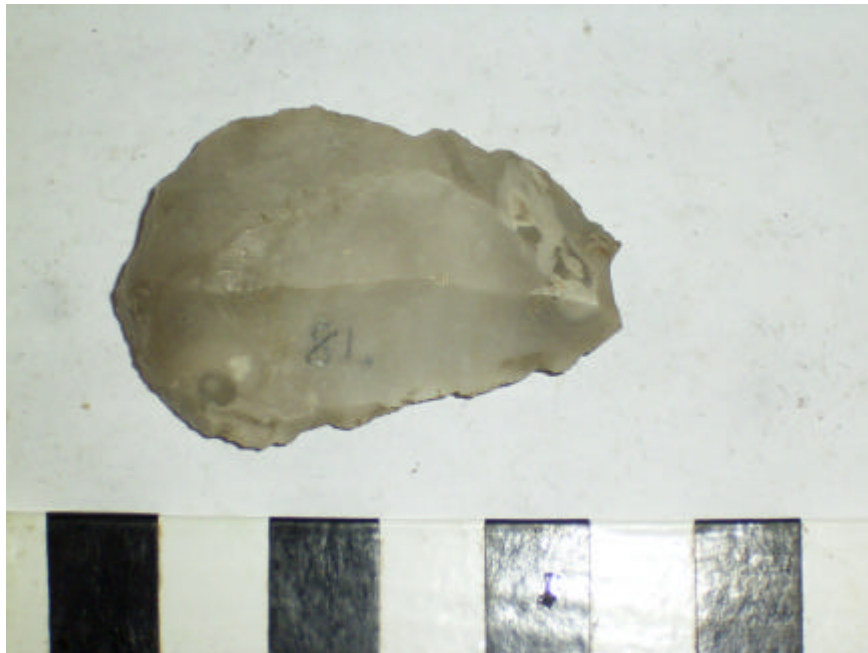
FINDER NAME
 FIND CAUSE
 FIND DATE

COMPLETENESS
 CONDITION
 PATINATION

LENGTH WIDTH THICKNESS WEIGHT

DESCRIPTION

PHOTO NO. PHOTOGRAPHER



CAT. NO. TYPE MATERIAL
 DATE FROM TO

PROVENANCE
 CHART NO.
 PROVENANCE 1
 PROVENANCE 2
 PROVENANCE 3

FINDER NAME
 FIND CAUSE
 FIND DATE

COMPLETENESS
 CONDITION
 PATINATION

LENGTH WIDTH THICKNESS WEIGHT

DESCRIPTION

PHOTO NO. PHOTOGRAPHER



CAT. NO. TYPE MATERIAL
DATE FROM TO

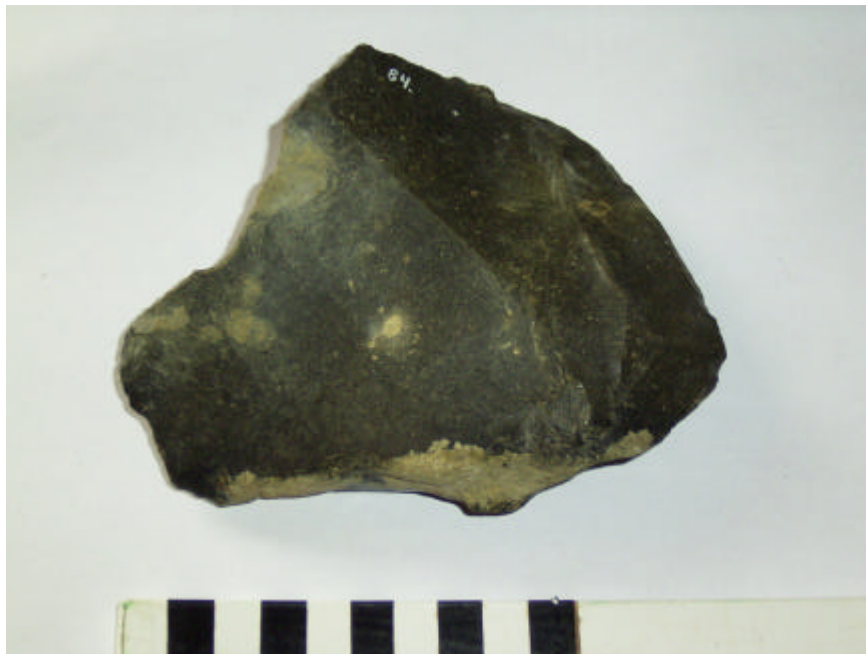
PROVENANCE
CHART NO.
PROVENANCE 1
PROVENANCE 2
PROVENANCE 3

FINDER NAME
FIND CAUSE
FIND DATE

COMPLETENESS
CONDITION
PATINATION
LENGTH WIDTH THICKNESS WEIGHT
DESCRIPTION

PHOTO NO. PHOTOGRAPHER

| | | | | | |
|--------------|--|-------------------|------------|-----------|-----------------|
| CAT. NO. | 84 | TYPE | Unclassed | MATERIAL | ?Portland chert |
| DATE FROM | Lower Palaeolithic | TO | Bronze Age | | |
| PROVENANCE | 34 | marsh at Keyhaven | | | |
| CHART NO. | 2021 | | | | |
| PROVENANCE 1 | on the marsh | | | | |
| PROVENANCE 2 | at Keyhaven | | | | |
| PROVENANCE 3 | | | | | |
| FINDER NAME | Stephen White | | | | |
| FIND CAUSE | fieldwalking | | | | |
| FIND DATE | | | | | |
| COMPLETENESS | No | | | | |
| CONDITION | Slightly rolled | | | | |
| PATINATION | Unpatinated | | | | |
| LENGTH | 112 | WIDTH | 128 | THICKNESS | 33 |
| WEIGHT | 542 | | | | |
| DESCRIPTION | Poss retouched broken flake of chert. Poss unfinished tool on large flake. | | | | |
| PHOTO NO. | R0010091 | PHOTOGRAPHER | MHT | | |



CAT. NO. TYPE MATERIAL
DATE FROM TO

PROVENANCE
CHART NO.
PROVENANCE 1
PROVENANCE 2
PROVENANCE 3

FINDER NAME
FIND CAUSE
FIND DATE

COMPLETENESS
CONDITION
PATINATION

LENGTH WIDTH THICKNESS WEIGHT

DESCRIPTION

PHOTO NO. PHOTOGRAPHER



CAT. NO. TYPE MATERIAL
DATE FROM TO

PROVENANCE
CHART NO.
PROVENANCE 1
PROVENANCE 2
PROVENANCE 3

FINDER NAME
FIND CAUSE
FIND DATE

COMPLETENESS
CONDITION
PATINATION

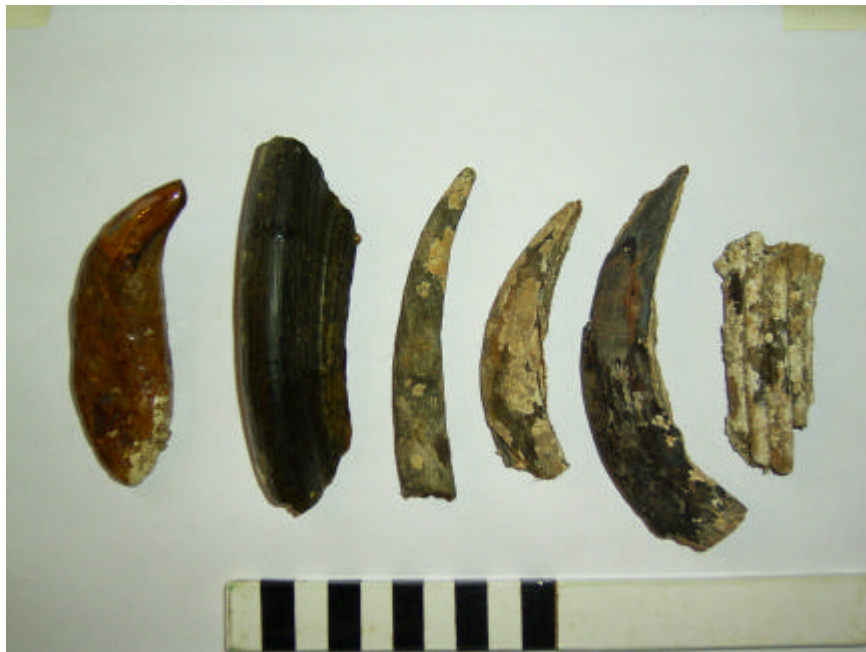
LENGTH WIDTH THICKNESS WEIGHT

DESCRIPTION

PHOTO NO. PHOTOGRAPHER



| | | | | | |
|--------------|---|--------------------------------------|--------------------|-----------|-------|
| CAT. NO. | 87 | TYPE | Hippopotamus tooth | MATERIAL | Tooth |
| DATE FROM | | TO | | | |
| PROVENANCE | 15 | off Newtown River mouth, IOW, Solent | | | |
| CHART NO. | 2021 | | | | |
| PROVENANCE 1 | off Newtown | | | | |
| PROVENANCE 2 | | | | | |
| PROVENANCE 3 | | | | | |
| FINDER NAME | Stephen & Phillip White | | | | |
| FIND CAUSE | oyster dredging | | | | |
| FIND DATE | | | | | |
| COMPLETENESS | No | | | | |
| CONDITION | Good | | | | |
| PATINATION | Blackish exterior | | | | |
| LENGTH | | WIDTH | | THICKNESS | |
| WEIGHT | | | | | |
| DESCRIPTION | Hippopotamus canine fragment. Logitudinally split. Varnished? Length c. 112mm (measured from photo and drawing). | | | | |
| PHOTO NO. | R0010118, R0010119 | | PHOTOGRAPHER | MHT | |



CAT. NO. TYPE MATERIAL
DATE FROM TO

PROVENANCE
CHART NO.
PROVENANCE 1
PROVENANCE 2
PROVENANCE 3

FINDER NAME
FIND CAUSE
FIND DATE

COMPLETENESS
CONDITION
PATINATION

LENGTH WIDTH THICKNESS WEIGHT

DESCRIPTION

PHOTO NO. PHOTOGRAPHER



CAT. NO. TYPE MATERIAL
 DATE FROM TO

PROVENANCE
 CHART NO.
 PROVENANCE 1
 PROVENANCE 2
 PROVENANCE 3

FINDER NAME
 FIND CAUSE
 FIND DATE

COMPLETENESS
 CONDITION
 PATINATION

LENGTH WIDTH THICKNESS WEIGHT

DESCRIPTION

PHOTO NO. PHOTOGRAPHER

