

CAT. NO.  TYPE  MATERIAL   
DATE FROM  TO

PROVENANCE    
CHART NO.   
PROVENANCE 1   
PROVENANCE 2   
PROVENANCE 3

FINDER NAME   
FIND CAUSE   
FIND DATE

COMPLETENESS   
CONDITION   
PATINATION

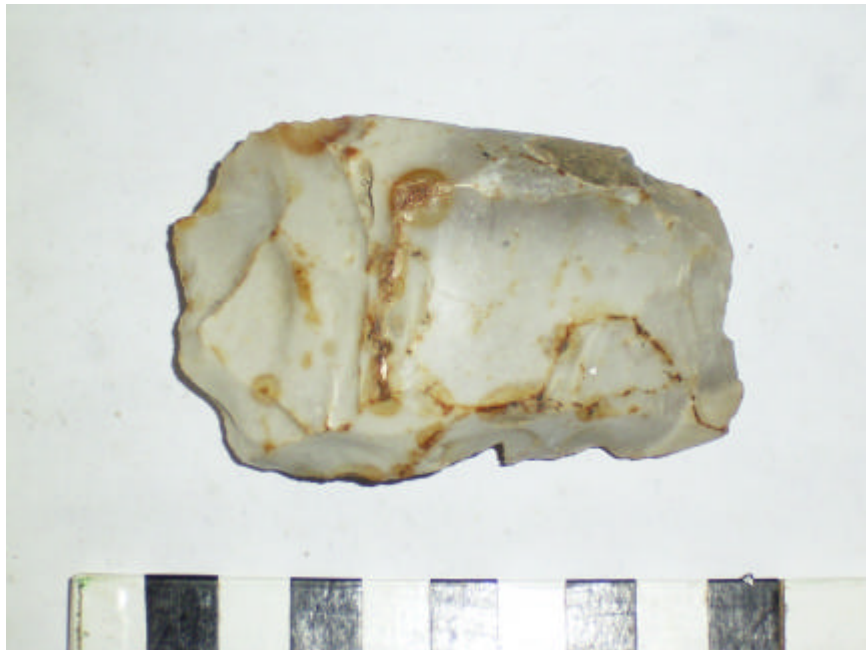
LENGTH  WIDTH  THICKNESS  WEIGHT

DESCRIPTION

PHOTO NO.  PHOTOGRAPHER



CAT. NO.	91	TYPE	Reworked ground axe fragment	MATERIAL	Flint
DATE FROM	Early Neolithic	TO	Neolithic		
PROVENANCE	62	site of old Roman road, Bere Regis			
CHART NO.					
PROVENANCE 1	on site of old Roman road				
PROVENANCE 2	across field north of Anderson				
PROVENANCE 3	Bere Regis				
FINDER NAME					
FIND CAUSE					
FIND DATE					
COMPLETENESS	Yes				
CONDITION	Slightly rolled				
PATINATION	Patinated				
LENGTH	78	WIDTH	51	THICKNESS	27
WEIGHT	127				
DESCRIPTION	Fragment of ground flint axe heavily reworked with bifacial flaking into coarse bifacial tool. Small area of ground edge remains.				
PHOTO NO.	R0010273	PHOTOGRAPHER	MHT		



CAT. NO.  TYPE  MATERIAL   
 DATE FROM  TO

PROVENANCE   
 CHART NO.   
 PROVENANCE 1   
 PROVENANCE 2   
 PROVENANCE 3

FINDER NAME   
 FIND CAUSE   
 FIND DATE

COMPLETENESS   
 CONDITION   
 PATINATION

LENGTH  WIDTH  THICKNESS  WEIGHT

DESCRIPTION

PHOTO NO.  PHOTOGRAPHER



CAT. NO.  TYPE  MATERIAL   
DATE FROM  TO

PROVENANCE   
CHART NO.   
PROVENANCE 1   
PROVENANCE 2   
PROVENANCE 3

FINDER NAME   
FIND CAUSE   
FIND DATE

COMPLETENESS   
CONDITION   
PATINATION

LENGTH  WIDTH  THICKNESS  WEIGHT

DESCRIPTION

PHOTO NO.  PHOTOGRAPHER



CAT. NO.  TYPE  MATERIAL   
DATE FROM  TO

PROVENANCE    
CHART NO.   
PROVENANCE 1   
PROVENANCE 2   
PROVENANCE 3

FINDER NAME   
FIND CAUSE   
FIND DATE

COMPLETENESS   
CONDITION   
PATINATION   
LENGTH  WIDTH  THICKNESS  WEIGHT

DESCRIPTION

PHOTO NO.  PHOTOGRAPHER

CAT. NO.  TYPE  MATERIAL   
 DATE FROM  TO

PROVENANCE   
 CHART NO.   
 PROVENANCE 1   
 PROVENANCE 2   
 PROVENANCE 3

FINDER NAME   
 FIND CAUSE   
 FIND DATE

COMPLETENESS   
 CONDITION   
 PATINATION

LENGTH  WIDTH  THICKNESS  WEIGHT

DESCRIPTION

PHOTO NO.  PHOTOGRAPHER



CAT. NO.  TYPE  MATERIAL   
DATE FROM  TO

PROVENANCE   
CHART NO.   
PROVENANCE 1   
PROVENANCE 2   
PROVENANCE 3

FINDER NAME   
FIND CAUSE   
FIND DATE

COMPLETENESS   
CONDITION   
PATINATION   
LENGTH  WIDTH  THICKNESS  WEIGHT   
DESCRIPTION

PHOTO NO.  PHOTOGRAPHER

CAT. NO.  TYPE  MATERIAL   
DATE FROM  TO

PROVENANCE

CHART NO.   
PROVENANCE 1

PROVENANCE 2  
PROVENANCE 3

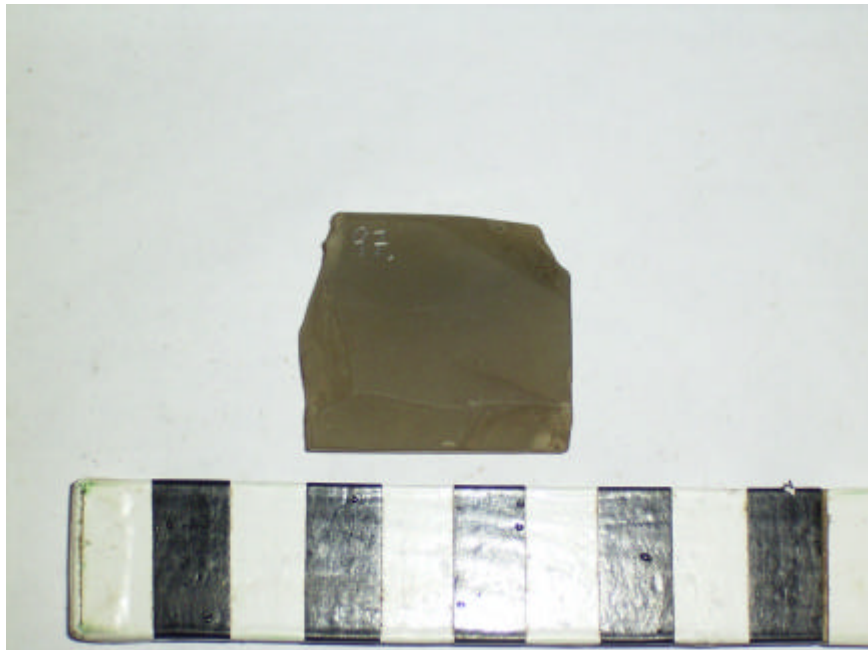
FINDER NAME   
FIND CAUSE   
FIND DATE

COMPLETENESS   
CONDITION   
PATINATION

LENGTH  WIDTH  THICKNESS  WEIGHT

DESCRIPTION

PHOTO NO.  PHOTOGRAPHER

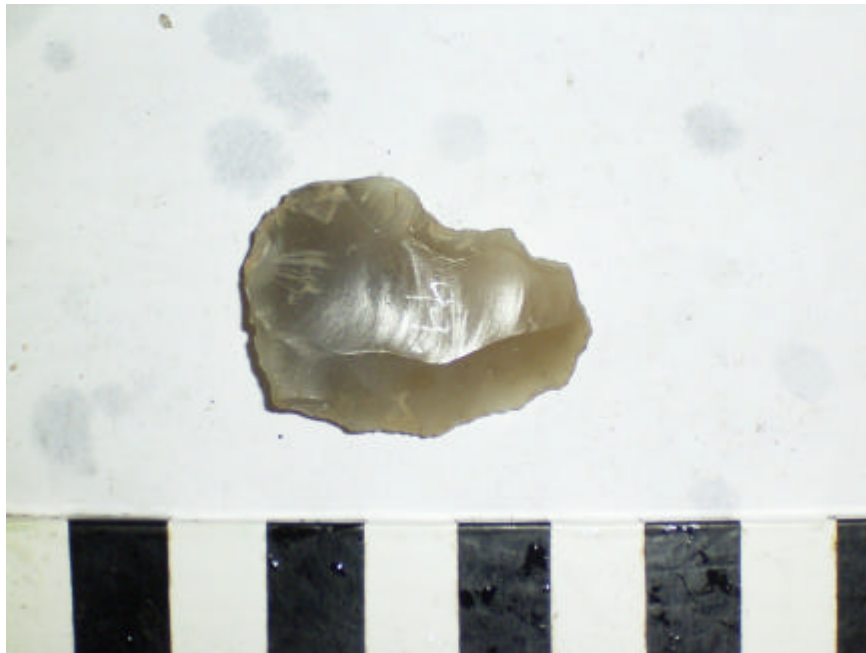




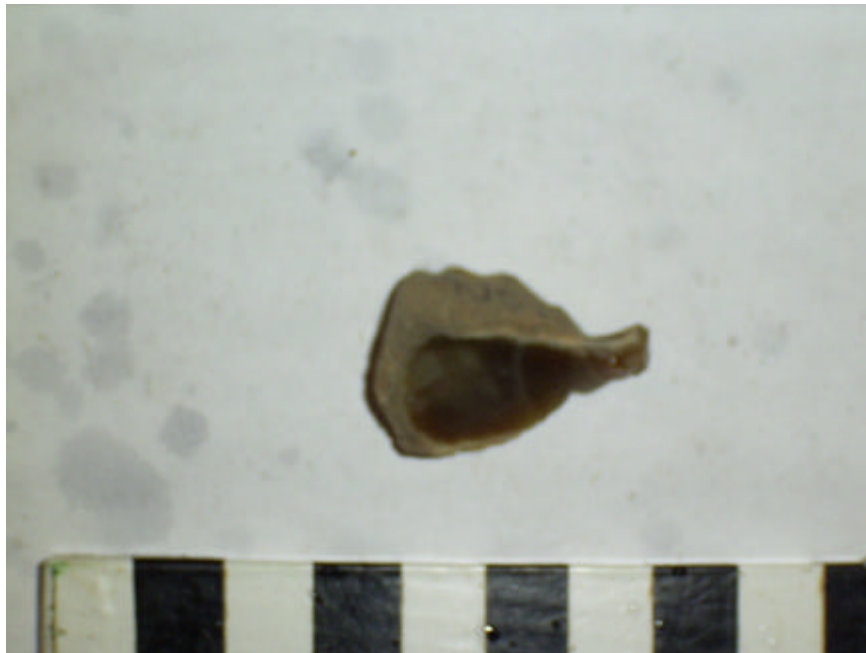
CAT. NO.	98	TYPE	Denticulate scraper	MATERIAL	Flint
DATE FROM	Early Neolithic	TO	Bronze Age		
PROVENANCE	41 field along side Hordle House School, Taddiford, Milford on Sea				
CHART NO.					
PROVENANCE 1	in field along side Hordle House School M.O.S.				
PROVENANCE 2					
PROVENANCE 3					
FINDER NAME					
FIND CAUSE					
FIND DATE					
COMPLETENESS	Yes				
CONDITION	Sharp				
PATINATION	Unpatinated				
LENGTH	40	WIDTH	49	THICKNESS	16
WEIGHT	39				
DESCRIPTION	Relatively thick End scraper with inverse retouch on bulb. Direct, continuous, denticulate, convex retouch at dist end.				
PHOTO NO.	R0010155	PHOTOGRAPHER	MHT		



CAT. NO.	99	TYPE	Flake	MATERIAL	Flint
DATE FROM	Early Neolithic	TO	Bronze Age		
PROVENANCE	41 field along side Hordle House School, Taddiford, Milford on Sea				
CHART NO.					
PROVENANCE 1	in field along side Hordle House School M.O.S.				
PROVENANCE 2					
PROVENANCE 3					
FINDER NAME					
FIND CAUSE					
FIND DATE					
COMPLETENESS	Yes				
CONDITION	Slightly rolled				
PATINATION	Unpatinated				
LENGTH	36	WIDTH	27	THICKNESS	5
WEIGHT	6				
DESCRIPTION	Miscellaneous undiagnostic flake				
PHOTO NO.	R0010250	PHOTOGRAPHER	MHT		



CAT. NO.	100	TYPE	Flake	MATERIAL	Flint
DATE FROM	Early Neolithic	TO	Bronze Age		
PROVENANCE	41 field along side Hordle House School, Taddiford, Milford on Sea				
CHART NO.					
PROVENANCE 1	in field along side Hordle House School M.O.S.				
PROVENANCE 2					
PROVENANCE 3					
FINDER NAME					
FIND CAUSE					
FIND DATE					
COMPLETENESS	Yes				
CONDITION	Sharp				
PATINATION	Unpatinated				
LENGTH	31	WIDTH	20	THICKNESS	12
WEIGHT	6				
DESCRIPTION	Miscellaneous undiagnostic flake				
PHOTO NO.	R0010237			PHOTOGRAPHER	MHT



CAT. NO.	101	TYPE	Flake	MATERIAL	Flint
DATE FROM	Ealy Neolithic	TO	Bronze Age		
PROVENANCE	41	field along side Hordle House School, Taddiford, Milford on Sea			
CHART NO.					
PROVENANCE 1	in field along side Hordle House School M.O.S.				
PROVENANCE 2					
PROVENANCE 3					
FINDER NAME					
FIND CAUSE					
FIND DATE					
COMPLETENESS	Yes				
CONDITION	Slightly rolled				
PATINATION	Unpatinated				
LENGTH	35	WIDTH	24	THICKNESS	7
WEIGHT	7				
DESCRIPTION	Tertiary hard hammer struck flake				
PHOTO NO.	R0010154	PHOTOGRAPHER	MHT		



CAT. NO.  TYPE  MATERIAL   
 DATE FROM  TO

PROVENANCE

CHART NO.   
 PROVENANCE 1   
 PROVENANCE 2   
 PROVENANCE 3

FINDER NAME   
 FIND CAUSE   
 FIND DATE

COMPLETENESS   
 CONDITION   
 PATINATION

LENGTH  WIDTH  THICKNESS  WEIGHT

DESCRIPTION

PHOTO NO.  PHOTOGRAPHER



CAT. NO.	103	TYPE	Worked flint	MATERIAL	Flint
DATE FROM	Prehistoric	TO	Prehistoric		
PROVENANCE	41	field along side Hordle House School, Taddiford, Milford on Sea			
CHART NO.					
PROVENANCE 1	in field along side Hordle House School M.O.S.				
PROVENANCE 2					
PROVENANCE 3					
FINDER NAME					
FIND CAUSE					
FIND DATE					
COMPLETENESS	Yes				
CONDITION					
PATINATION					
LENGTH	40	WIDTH	31	THICKNESS	
WEIGHT					
DESCRIPTION	Blade/flake (dimensions and description after MW catalogue; not to be found in collection)				
PHOTO NO.					PHOTOGRAPHER

CAT. NO.	104	TYPE	Flake	MATERIAL	Flint
DATE FROM	Early Neolithic	TO	Bronze Age		
PROVENANCE	41 field along side Hordle House School, Taddiford, Milford on Sea				
CHART NO.					
PROVENANCE 1	in field along side Hordle House School M.O.S.				
PROVENANCE 2					
PROVENANCE 3					
FINDER NAME					
FIND CAUSE					
FIND DATE					
COMPLETENESS					
CONDITION	Sharp				
PATINATION	Unpatinated				
LENGTH	40	WIDTH	28	THICKNESS	11
WEIGHT	15				
DESCRIPTION	Secondary hard hammer struck flake				
PHOTO NO.	R0010150	PHOTOGRAPHER	MHT		



CAT. NO.  TYPE  MATERIAL   
DATE FROM  TO

PROVENANCE

CHART NO.   
PROVENANCE 1

PROVENANCE 2  
PROVENANCE 3

FINDER NAME   
FIND CAUSE   
FIND DATE

COMPLETENESS  
CONDITION  
PATINATION

LENGTH  WIDTH  THICKNESS  WEIGHT

DESCRIPTION

PHOTO NO.  PHOTOGRAPHER



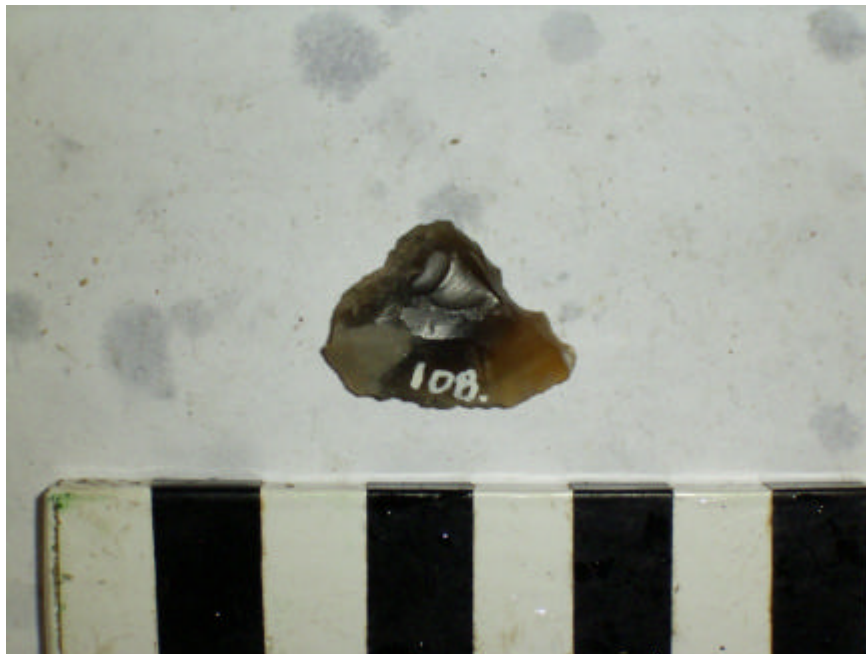
CAT. NO.	106	TYPE	Flake	MATERIAL	Flint
DATE FROM	Early Neolithic	TO	Bronze Age		
PROVENANCE	41 field along side Hordle House School, Taddiford, Milford on Sea				
CHART NO.					
PROVENANCE 1	in field along side Hordle House School M.O.S.				
PROVENANCE 2					
PROVENANCE 3					
FINDER NAME					
FIND CAUSE					
FIND DATE					
COMPLETENESS	Yes				
CONDITION	Slightly rolled				
PATINATION	Unpatinated				
LENGTH	30	WIDTH	22	THICKNESS	8
WEIGHT	7				
DESCRIPTION	Undiagnostic flake. Heavily plough damaged				
PHOTO NO.	R0010247	PHOTOGRAPHER	MHT		



CAT. NO.	107	TYPE	Flake	MATERIAL	Flint
DATE FROM	Early Neolithic	TO	Bronze Age		
PROVENANCE	41 field along side Hordle House School, Taddiford, Milford on Sea				
CHART NO.					
PROVENANCE 1	in field along side Hordle House School M.O.S.				
PROVENANCE 2					
PROVENANCE 3					
FINDER NAME					
FIND CAUSE					
FIND DATE					
COMPLETENESS	Yes				
CONDITION	Slightly rolled				
PATINATION	Unpatinated				
LENGTH	33	WIDTH	23	THICKNESS	11
WEIGHT	9				
DESCRIPTION	Tertiary hard hammer struck flake				
PHOTO NO.	R0010149	PHOTOGRAPHER	MHT		



CAT. NO.	108	TYPE	Flake	MATERIAL	Flint
DATE FROM	Early Neolithic	TO	Bronze Age		
PROVENANCE	41 field along side Hordle House School, Taddiford, Milford on Sea				
CHART NO.					
PROVENANCE 1	in field along side Hordle House School M.O.S.				
PROVENANCE 2					
PROVENANCE 3					
FINDER NAME					
FIND CAUSE					
FIND DATE					
COMPLETENESS	Yes				
CONDITION	Slightly rolled				
PATINATION	Unpatinated				
LENGTH	21	WIDTH	19	THICKNESS	5
WEIGHT	2				
DESCRIPTION	Undiagnostic flint flake. Butt crushed. All heavily plough damaged.				
PHOTO NO.	R0010249	PHOTOGRAPHER	MHT		



CAT. NO.	109	TYPE	Fragment of scraper blade		MATERIAL	Flint	
DATE FROM	Early Neolithic		TO	Bronze Age			
PROVENANCE	41	field along side Hordle House School, Taddiford, Milford on Sea					
CHART NO.							
PROVENANCE 1	in field along side Hordle House School M.O.S.						
PROVENANCE 2							
PROVENANCE 3							
FINDER NAME							
FIND CAUSE							
FIND DATE							
COMPLETENESS	Yes						
CONDITION	Sharp						
PATINATION	Unpatinated						
LENGTH	13	WIDTH	24	THICKNESS	9	WEIGHT	3
DESCRIPTION	Fragment/flake from blade of end scraper. Either snapped or removed during resharpening						
PHOTO NO.	R0010153		PHOTOGRAPHER	MHT			



CAT. NO.	110	TYPE	Flake	MATERIAL	Flint
DATE FROM	Early Neolithic	TO	Bronze Age		
PROVENANCE	41	field along side Hordle House School, Taddiford, Milford on Sea			
CHART NO.					
PROVENANCE 1	in field along side Hordle House School M.O.S.				
PROVENANCE 2					
PROVENANCE 3					
FINDER NAME					
FIND CAUSE					
FIND DATE					
COMPLETENESS	Broken				
CONDITION	Slightly rolled				
PATINATION	Unpatinated				
LENGTH	39	WIDTH	21	THICKNESS	5
WEIGHT	6				
DESCRIPTION	Broken flake. Quite thin and better than some from this field. Hard hammer. Still heavily edge damaged.				
PHOTO NO.	R0010248	PHOTOGRAPHER	MHT		



CAT. NO.  TYPE  MATERIAL   
DATE FROM  TO

PROVENANCE

CHART NO.   
PROVENANCE 1

PROVENANCE 2  
PROVENANCE 3

FINDER NAME   
FIND CAUSE   
FIND DATE

COMPLETENESS  
CONDITION  
PATINATION

LENGTH  WIDTH  THICKNESS  WEIGHT

DESCRIPTION

PHOTO NO.  PHOTOGRAPHER

CAT. NO.	112	TYPE	Worked flint	MATERIAL	Flint
DATE FROM	Prehistoric		TO	Prehistoric	
PROVENANCE	41	field along side Hordle House School, Taddiford, Milford on Sea			
CHART NO.					
PROVENANCE 1	in field along side Hordle House School M.O.S.				
PROVENANCE 2					
PROVENANCE 3					
FINDER NAME					
FIND CAUSE					
FIND DATE					
COMPLETENESS					
CONDITION					
PATINATION					
LENGTH	27	WIDTH	16	THICKNESS	
WEIGHT					
DESCRIPTION	Blade/flake (dimensions and description after MW catalogue; not to be found in collection)				
PHOTO NO.					PHOTOGRAPHER

CAT. NO.  TYPE  MATERIAL   
DATE FROM  TO

PROVENANCE    
CHART NO.   
PROVENANCE 1   
PROVENANCE 2   
PROVENANCE 3

FINDER NAME   
FIND CAUSE   
FIND DATE

COMPLETENESS   
CONDITION   
PATINATION

LENGTH  WIDTH  THICKNESS  WEIGHT

DESCRIPTION

PHOTO NO.  PHOTOGRAPHER





CAT. NO.  TYPE  MATERIAL   
DATE FROM  TO

PROVENANCE    
CHART NO.   
PROVENANCE 1   
PROVENANCE 2   
PROVENANCE 3

FINDER NAME   
FIND CAUSE   
FIND DATE

COMPLETENESS   
CONDITION   
PATINATION   
LENGTH  WIDTH  THICKNESS  WEIGHT

DESCRIPTION

PHOTO NO.  PHOTOGRAPHER

CAT. NO.  TYPE  MATERIAL   
DATE FROM  TO

PROVENANCE   
CHART NO.   
PROVENANCE 1   
PROVENANCE 2   
PROVENANCE 3

FINDER NAME   
FIND CAUSE   
FIND DATE

COMPLETENESS   
CONDITION   
PATINATION

LENGTH  WIDTH  THICKNESS  WEIGHT

DESCRIPTION

PHOTO NO.  PHOTOGRAPHER



CAT. NO.	116	TYPE	DUPLICATE RECORD of no. 7 (flake)	MATERIAL	
DATE FROM		TO			
PROVENANCE	7	off Stone Point, Lepe, Solent			
CHART NO.	2040				
PROVENANCE 1	off Stone Point				
PROVENANCE 2	Lepe				
PROVENANCE 3					
FINDER NAME	Stephen White				
FIND CAUSE	oyster dredging				
FIND DATE					
COMPLETENESS					
CONDITION					
PATINATION					
LENGTH		WIDTH		THICKNESS	
WEIGHT					
DESCRIPTION	Same as Find No. 7				
PHOTO NO.		PHOTOGRAPHER			

CAT. NO.  TYPE  MATERIAL   
DATE FROM  TO

PROVENANCE   
CHART NO.   
PROVENANCE 1   
PROVENANCE 2  
PROVENANCE 3

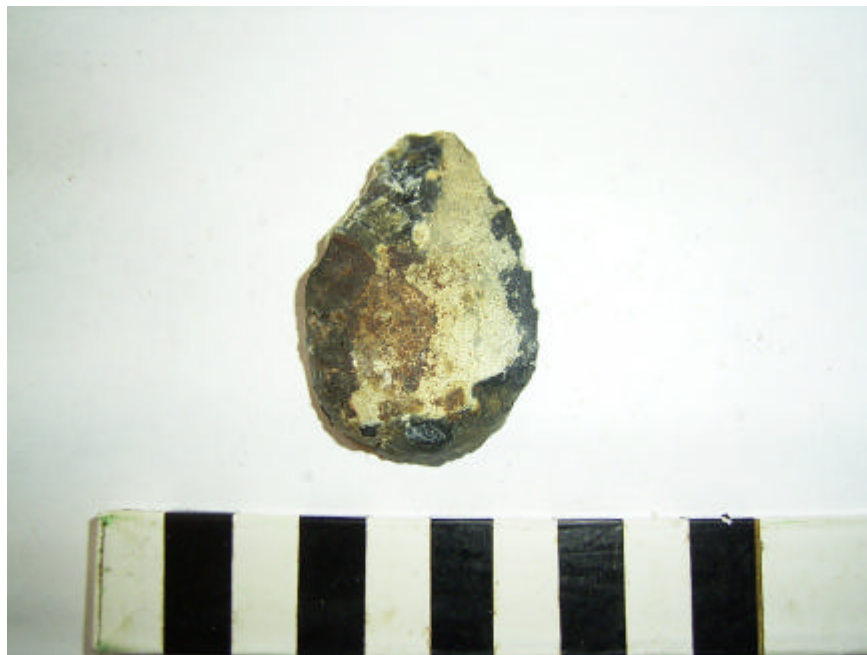
FINDER NAME  
FIND CAUSE  
FIND DATE

COMPLETENESS   
CONDITION   
PATINATION

LENGTH  WIDTH  THICKNESS  WEIGHT

DESCRIPTION

PHOTO NO.  PHOTOGRAPHER



CAT. NO.  TYPE  MATERIAL   
DATE FROM  TO

PROVENANCE   
CHART NO.   
PROVENANCE 1   
PROVENANCE 2   
PROVENANCE 3

FINDER NAME   
FIND CAUSE   
FIND DATE

COMPLETENESS   
CONDITION   
PATINATION

LENGTH  WIDTH  THICKNESS  WEIGHT

DESCRIPTION

PHOTO NO.  PHOTOGRAPHER



CAT. NO.  TYPE  MATERIAL   
 DATE FROM  TO

PROVENANCE   
 CHART NO.   
 PROVENANCE 1   
 PROVENANCE 2   
 PROVENANCE 3

FINDER NAME   
 FIND CAUSE   
 FIND DATE

COMPLETENESS   
 CONDITION   
 PATINATION

LENGTH  WIDTH  THICKNESS  WEIGHT

DESCRIPTION

PHOTO NO.  PHOTOGRAPHER



CAT. NO.  TYPE  MATERIAL   
DATE FROM  TO

PROVENANCE   
CHART NO.   
PROVENANCE 1   
PROVENANCE 2   
PROVENANCE 3

FINDER NAME   
FIND CAUSE   
FIND DATE

COMPLETENESS   
CONDITION   
PATINATION

LENGTH  WIDTH  THICKNESS  WEIGHT

DESCRIPTION

PHOTO NO.  PHOTOGRAPHER



CAT. NO.  TYPE  MATERIAL   
DATE FROM  TO

PROVENANCE   
CHART NO.   
PROVENANCE 1   
PROVENANCE 2   
PROVENANCE 3

FINDER NAME   
FIND CAUSE   
FIND DATE

COMPLETENESS   
CONDITION   
PATINATION

LENGTH  WIDTH  THICKNESS  WEIGHT

DESCRIPTION

PHOTO NO.  PHOTOGRAPHER





CAT. NO.	122	TYPE	Pick	MATERIAL	Ironstone/sandstone
DATE FROM	Mesolithic	TO	Mesolithic		
PROVENANCE	46	close inshore at Tanners Lane, Solent			
CHART NO.	2040				
PROVENANCE 1	close inshore				
PROVENANCE 2	at Tanners				
PROVENANCE 3					
FINDER NAME	Stephen & Phillip White				
FIND CAUSE	oyster dredging				
FIND DATE					
COMPLETENESS	Yes				
CONDITION	Sharp				
PATINATION	Unpatinated				
LENGTH	181	WIDTH	57	THICKNESS	52
WEIGHT	587				
DESCRIPTION	Coarsely made pick, butt unmodified, tapers to point, irregular cylindrical x section.				
PHOTO NO.	R0010076	PHOTOGRAPHER	MHT		



CAT. NO.	123	TYPE	Unspecified core tool	MATERIAL	Flint
DATE FROM	Mesolithic	TO	Mesolithic		
PROVENANCE	15	off Newtown River mouth, IOW, Solent			
CHART NO.	2021				
PROVENANCE 1	off Newtown				
PROVENANCE 2	IOW				
PROVENANCE 3					
FINDER NAME	Stephen & Phillip White				
FIND CAUSE	oyster dredging				
FIND DATE					
COMPLETENESS	Yes				
CONDITION					
PATINATION					
LENGTH	125	WIDTH	50	THICKNESS	
WEIGHT					
DESCRIPTION	(dimensions and description after MW catalogue; not to be found in collection)				
PHOTO NO.					PHOTOGRAPHER

CAT. NO.  TYPE  MATERIAL   
DATE FROM  TO

PROVENANCE    
CHART NO.   
PROVENANCE 1   
PROVENANCE 2   
PROVENANCE 3

FINDER NAME   
FIND CAUSE   
FIND DATE

COMPLETENESS   
CONDITION   
PATINATION

LENGTH  WIDTH  THICKNESS  WEIGHT

DESCRIPTION

PHOTO NO.  PHOTOGRAPHER



CAT. NO.	125	TYPE	Unspecified core tool	MATERIAL	Flint
DATE FROM	Mesolithic	TO	Mesolithic		
PROVENANCE	20	off Pitts Deep, Sowley, Solent			
CHART NO.	2040				
PROVENANCE 1	off Pitts Deep				
PROVENANCE 2					
PROVENANCE 3					
FINDER NAME	Stephen White				
FIND CAUSE	oyster dredging				
FIND DATE					
COMPLETENESS	Yes				
CONDITION					
PATINATION					
LENGTH	132	WIDTH	54	THICKNESS	
WEIGHT					
DESCRIPTION	Black (dimensions and description after MW catalogue; not to be found in collection)				
PHOTO NO.					PHOTOGRAPHER

CAT. NO.  TYPE  MATERIAL   
DATE FROM  TO

PROVENANCE    
CHART NO.   
PROVENANCE 1   
PROVENANCE 2   
PROVENANCE 3

FINDER NAME   
FIND CAUSE   
FIND DATE

COMPLETENESS   
CONDITION   
PATINATION

LENGTH  WIDTH  THICKNESS  WEIGHT

DESCRIPTION

PHOTO NO.  PHOTOGRAPHER



CAT. NO.  TYPE  MATERIAL   
DATE FROM  TO

PROVENANCE    
CHART NO.   
PROVENANCE 1   
PROVENANCE 2  
PROVENANCE 3

FINDER NAME   
FIND CAUSE   
FIND DATE

COMPLETENESS   
CONDITION   
PATINATION

LENGTH  WIDTH  THICKNESS  WEIGHT

DESCRIPTION

PHOTO NO.  PHOTOGRAPHER



CAT. NO.  TYPE  MATERIAL   
DATE FROM  TO

PROVENANCE    
CHART NO.   
PROVENANCE 1   
PROVENANCE 2   
PROVENANCE 3

FINDER NAME   
FIND CAUSE   
FIND DATE

COMPLETENESS   
CONDITION   
PATINATION

LENGTH  WIDTH  THICKNESS  WEIGHT   
DESCRIPTION

PHOTO NO.  PHOTOGRAPHER

CAT. NO.  TYPE  MATERIAL   
DATE FROM  TO

PROVENANCE    
CHART NO.   
PROVENANCE 1   
PROVENANCE 2   
PROVENANCE 3

FINDER NAME   
FIND CAUSE   
FIND DATE

COMPLETENESS   
CONDITION   
PATINATION

LENGTH  WIDTH  THICKNESS  WEIGHT

DESCRIPTION

PHOTO NO.  PHOTOGRAPHER





CAT. NO.  TYPE  MATERIAL   
DATE FROM  TO

PROVENANCE    
CHART NO.   
PROVENANCE 1   
PROVENANCE 2   
PROVENANCE 3

FINDER NAME   
FIND CAUSE   
FIND DATE

COMPLETENESS   
CONDITION   
PATINATION

LENGTH  WIDTH  THICKNESS  WEIGHT

DESCRIPTION

PHOTO NO.  PHOTOGRAPHER

CAT. NO.  TYPE  MATERIAL   
DATE FROM  TO

PROVENANCE    
CHART NO.   
PROVENANCE 1   
PROVENANCE 2   
PROVENANCE 3

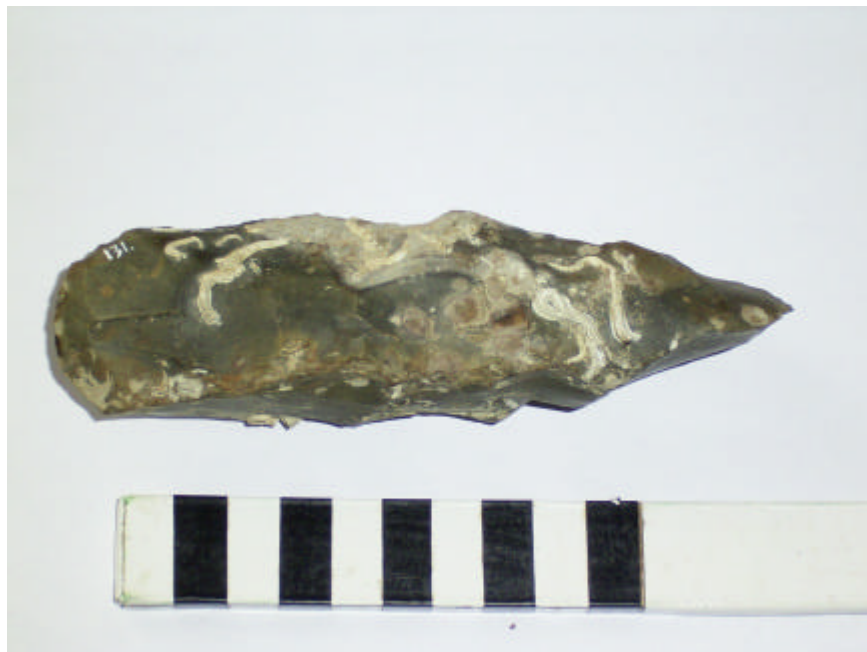
FINDER NAME   
FIND CAUSE   
FIND DATE

COMPLETENESS   
CONDITION   
PATINATION

LENGTH  WIDTH  THICKNESS  WEIGHT

DESCRIPTION

PHOTO NO.  PHOTOGRAPHER



CAT. NO.  TYPE  MATERIAL   
 DATE FROM  TO

PROVENANCE    
 CHART NO.   
 PROVENANCE 1   
 PROVENANCE 2   
 PROVENANCE 3

FINDER NAME   
 FIND CAUSE   
 FIND DATE

COMPLETENESS   
 CONDITION   
 PATINATION

LENGTH  WIDTH  THICKNESS  WEIGHT

DESCRIPTION

PHOTO NO.  PHOTOGRAPHER



CAT. NO.  TYPE  MATERIAL   
DATE FROM  TO

PROVENANCE    
CHART NO.   
PROVENANCE 1

PROVENANCE 2  
PROVENANCE 3

FINDER NAME   
FIND CAUSE   
FIND DATE

COMPLETENESS

CONDITION

PATINATION

LENGTH  WIDTH  THICKNESS  WEIGHT

DESCRIPTION

PHOTO NO. PHOTOGRAPHER

CAT. NO.  TYPE  MATERIAL   
 DATE FROM  TO

PROVENANCE    
 CHART NO.   
 PROVENANCE 1   
 PROVENANCE 2   
 PROVENANCE 3

FINDER NAME   
 FIND CAUSE   
 FIND DATE

COMPLETENESS   
 CONDITION   
 PATINATION

LENGTH  WIDTH  THICKNESS  WEIGHT

DESCRIPTION

PHOTO NO.  PHOTOGRAPHER



CAT. NO.	135	TYPE	Perforated mace head/pebble hammer	MATERIAL	Uncertain
DATE FROM	?Mesolithic	TO	Early Bronze Age		
PROVENANCE	13 east of Newtown, IOW, Solent				
CHART NO.	2021				
PROVENANCE 1	to the east of Newtown				
PROVENANCE 2					
PROVENANCE 3					
FINDER NAME	Stephen White				
FIND CAUSE	oyster dredging				
FIND DATE					
COMPLETENESS					
CONDITION	Sharp				
PATINATION	Unpatinated				
LENGTH	90	WIDTH	73	THICKNESS	17
WEIGHT	171				
DESCRIPTION	Perforated pebble mace head/pebble hammer, with hour glass perforation				
PHOTO NO.	R0010061	PHOTOGRAPHER	MHT		



CAT. NO.	136	TYPE	?Pick/axe	MATERIAL	Uncertain ?quartzite
DATE FROM	Mesolithic	TO	Mesolithic		
PROVENANCE	45	off Tanners Lane, Solent			
CHART NO.	2040				
PROVENANCE 1	at Tanners Lane				
PROVENANCE 2					
PROVENANCE 3					
FINDER NAME	Stephen White				
FIND CAUSE	oyster dredging				
FIND DATE					
COMPLETENESS	Yes				
CONDITION	Slightly rolled				
PATINATION	Stained				
LENGTH	142	WIDTH	47	THICKNESS	39
WEIGHT	301				
DESCRIPTION	Irregular cylindrical nodule, now with triangular section. Difficult to assess. Natural rolled butt contrasts with flake scars on body and suggests it might be genuine.				
PHOTO NO.	R0010108			PHOTOGRAPHER	MHT



CAT. NO.	137	TYPE	Unspecified core tool	MATERIAL	Flint
DATE FROM	Mesolithic	TO	Mesolithic		
PROVENANCE	6	Stanswood Bay, Solent			
CHART NO.	2040				
PROVENANCE 1	Stanswood Bay				
PROVENANCE 2					
PROVENANCE 3					
FINDER NAME	Wayne				
FIND CAUSE	oyster dredging				
FIND DATE					
COMPLETENESS	Yes				
CONDITION					
PATINATION					
LENGTH	212	WIDTH	60	THICKNESS	
WEIGHT					
DESCRIPTION	Fawn coloured (dimensions and description after MW catalogue; not to be found in collection)				
PHOTO NO.					PHOTOGRAPHER



CAT. NO.  TYPE  MATERIAL   
DATE FROM  TO

PROVENANCE    
CHART NO.   
PROVENANCE 1   
PROVENANCE 2   
PROVENANCE 3

FINDER NAME   
FIND CAUSE   
FIND DATE

COMPLETENESS

CONDITION

PATINATION

LENGTH  WIDTH  THICKNESS  WEIGHT

DESCRIPTION

PHOTO NO.  PHOTOGRAPHER

CAT. NO.  TYPE  MATERIAL   
 DATE FROM  TO

PROVENANCE    
 CHART NO.   
 PROVENANCE 1   
 PROVENANCE 2   
 PROVENANCE 3

FINDER NAME   
 FIND CAUSE   
 FIND DATE

COMPLETENESS   
 CONDITION   
 PATINATION

LENGTH  WIDTH  THICKNESS  WEIGHT

DESCRIPTION

PHOTO NO.  PHOTOGRAPHER



CAT. NO.	139	TYPE	Tranchet axe	MATERIAL	Flint
DATE FROM	Mesolithic	TO	Mesolithic		
PROVENANCE	24	on the corner of Oxy Lake and Mystery Lake, Solent			
CHART NO.	2040				
PROVENANCE 1	off Mystery Lake				
PROVENANCE 2	Pennington				
PROVENANCE 3					
FINDER NAME	Stephen & Phillip White				
FIND CAUSE	oyster dredging				
FIND DATE					
COMPLETENESS	Yes				
CONDITION	Sharp				
PATINATION	Unpatinated				
LENGTH	157	WIDTH	60	THICKNESS	43
WEIGHT	510				
DESCRIPTION	Plano convex, irregular square section. Double tranchet tip. Butt unworked surface of gravel nodule. Distinctive red stain.				
PHOTO NO.	R0010105	PHOTOGRAPHER	MHT		



CAT. NO.  TYPE  MATERIAL   
DATE FROM  TO

PROVENANCE    
CHART NO.   
PROVENANCE 1   
PROVENANCE 2  
PROVENANCE 3

FINDER NAME   
FIND CAUSE   
FIND DATE

COMPLETENESS   
CONDITION   
PATINATION

LENGTH  WIDTH  THICKNESS  WEIGHT

DESCRIPTION

PHOTO NO.  PHOTOGRAPHER



CAT. NO.  TYPE  MATERIAL   
DATE FROM  TO

PROVENANCE    
CHART NO.   
PROVENANCE 1

PROVENANCE 2  
PROVENANCE 3

FINDER NAME   
FIND CAUSE   
FIND DATE

COMPLETENESS

CONDITION  
PATINATION

LENGTH  WIDTH  THICKNESS  WEIGHT

DESCRIPTION

PHOTO NO. PHOTOGRAPHER

CAT. NO.  TYPE  MATERIAL   
DATE FROM  TO

PROVENANCE    
CHART NO.   
PROVENANCE 1   
PROVENANCE 2   
PROVENANCE 3

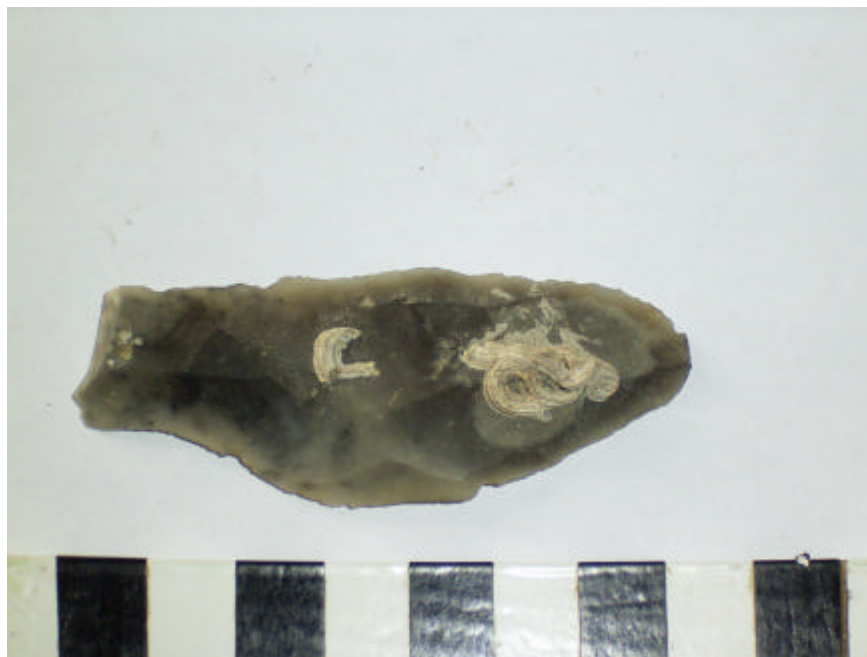
FINDER NAME   
FIND CAUSE   
FIND DATE

COMPLETENESS   
CONDITION   
PATINATION

LENGTH  WIDTH  THICKNESS  WEIGHT

DESCRIPTION

PHOTO NO.  PHOTOGRAPHER



CAT. NO.  TYPE  MATERIAL   
DATE FROM  TO

PROVENANCE    
CHART NO.   
PROVENANCE 1   
PROVENANCE 2   
PROVENANCE 3

FINDER NAME   
FIND CAUSE   
FIND DATE

COMPLETENESS

CONDITION

PATINATION

LENGTH  WIDTH  THICKNESS  WEIGHT

DESCRIPTION

PHOTO NO. PHOTOGRAPHER

CAT. NO.	144	TYPE	Polished axe	MATERIAL	?Jadite
DATE FROM	Neolithic	TO	?		
PROVENANCE	53	beach by Cut Bridge, Milford on Sea; presumed ex situ			
CHART NO.					
PROVENANCE 1	on the beach				
PROVENANCE 2	by Cut (?) Bridge M.O.S.				
PROVENANCE 3	possibly brought in a load of gravel for beach repairs				
FINDER NAME	Ann Taylor				
FIND CAUSE					
FIND DATE					
COMPLETENESS	Yes				
CONDITION	Mint				
PATINATION	Unpatinated				
LENGTH	57	WIDTH	34	THICKNESS	19
WEIGHT	58				
DESCRIPTION	Small well made ?jadeite axe. ?prehistoric or ethno				
PHOTO NO.	R0010058	PHOTOGRAPHER	MHT		





CAT. NO.  TYPE  MATERIAL   
 DATE FROM  TO

PROVENANCE    
 CHART NO.   
 PROVENANCE 1   
 PROVENANCE 2   
 PROVENANCE 3

FINDER NAME   
 FIND CAUSE   
 FIND DATE

COMPLETENESS   
 CONDITION   
 PATINATION

LENGTH  WIDTH  THICKNESS  WEIGHT

DESCRIPTION

PHOTO NO.  PHOTOGRAPHER



CAT. NO.  TYPE  MATERIAL   
DATE FROM  TO

PROVENANCE    
CHART NO.   
PROVENANCE 1   
PROVENANCE 2   
PROVENANCE 3

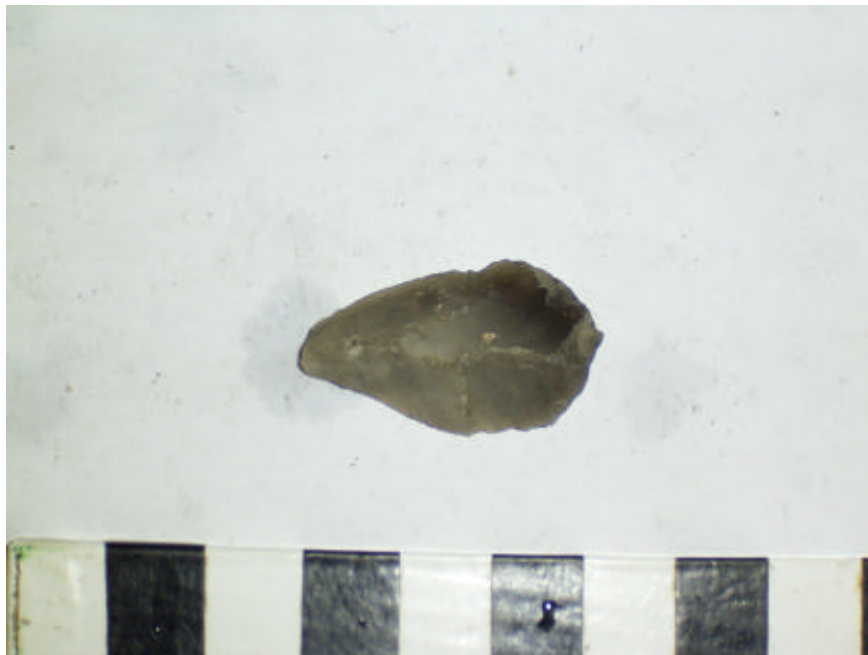
FINDER NAME   
FIND CAUSE   
FIND DATE

COMPLETENESS   
CONDITION   
PATINATION

LENGTH  WIDTH  THICKNESS  WEIGHT

DESCRIPTION

PHOTO NO.  PHOTOGRAPHER



CAT. NO.  TYPE  MATERIAL   
DATE FROM  TO

PROVENANCE    
CHART NO.   
PROVENANCE 1   
PROVENANCE 2  
PROVENANCE 3

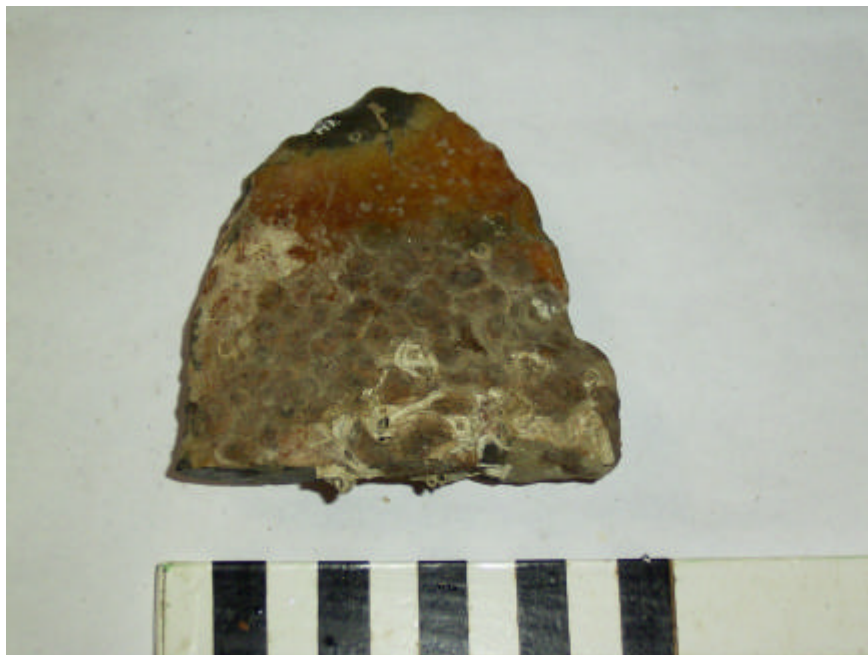
FINDER NAME   
FIND CAUSE   
FIND DATE

COMPLETENESS   
CONDITION   
PATINATION

LENGTH  WIDTH  THICKNESS  WEIGHT

DESCRIPTION

PHOTO NO.  PHOTOGRAPHER



CAT. NO.  TYPE  MATERIAL   
 DATE FROM  TO

PROVENANCE    
 CHART NO.   
 PROVENANCE 1   
 PROVENANCE 2   
 PROVENANCE 3

FINDER NAME   
 FIND CAUSE   
 FIND DATE

COMPLETENESS   
 CONDITION   
 PATINATION

LENGTH  WIDTH  THICKNESS  WEIGHT

DESCRIPTION

PHOTO NO.  PHOTOGRAPHER



CAT. NO.  TYPE  MATERIAL   
DATE FROM  TO

PROVENANCE    
CHART NO.   
PROVENANCE 1   
PROVENANCE 2   
PROVENANCE 3

FINDER NAME   
FIND CAUSE   
FIND DATE

COMPLETENESS

CONDITION

PATINATION

LENGTH  WIDTH  THICKNESS  WEIGHT

DESCRIPTION

PHOTO NO.  PHOTOGRAPHER