

CAT. NO.	1019	TYPE	Blade	MATERIAL	Flint
DATE FROM	Late Glacial	TO	Early Mesolithic		

PROVENANCE Solent
 CHART NO.
 PROVENANCE 1
 PROVENANCE 2
 PROVENANCE 3

FINDER NAME
 FIND CAUSE
 FIND DATE

COMPLETENESS
 CONDITION
 PATINATION

LENGTH WIDTH THICKNESS WEIGHT

DESCRIPTION

PHOTO NO. PHOTOGRAPHER



CAT. NO.	1020	TYPE	Flake	MATERIAL	Flint
DATE FROM	Late Glacial	TO	Neolithic		
PROVENANCE	2 Solent				
CHART NO.					
PROVENANCE 1	Unprovenanced Solent. Untraced in MW catalogue				
PROVENANCE 2					
PROVENANCE 3					
FINDER NAME					
FIND CAUSE					
FIND DATE					
COMPLETENESS	Yes				
CONDITION	Sharp				
PATINATION	Unpatinated				
LENGTH	70	WIDTH	38	THICKNESS	15
WEIGHT	32				
DESCRIPTION	Miscellaneous core trimming/preparation flake.				
PHOTO NO.	R0010199	PHOTOGRAPHER	MHT		



CAT. NO. TYPE MATERIAL
DATE FROM TO

PROVENANCE
CHART NO.
PROVENANCE 1
PROVENANCE 2
PROVENANCE 3

FINDER NAME
FIND CAUSE
FIND DATE

COMPLETENESS
CONDITION
PATINATION

LENGTH WIDTH THICKNESS WEIGHT

DESCRIPTION

PHOTO NO. PHOTOGRAPHER



CAT. NO. 1022 TYPE Blade MATERIAL Flint
DATE FROM Late Glacial TO Early Mesolithic

PROVENANCE 2 Solent
CHART NO.
PROVENANCE 1 Unprovenanced Solent. Untraced in MW catalogue
PROVENANCE 2
PROVENANCE 3

FINDER NAME
FIND CAUSE
FIND DATE

COMPLETENESS Yes
CONDITION Sharp
PATINATION Unpatinated

LENGTH 78 WIDTH 36 THICKNESS 16 WEIGHT 37

DESCRIPTION Core preparation flake, single cresting removal. Uncertain date but probbaly early.

PHOTO NO. R0010194 PHOTOGRAPHER MHT



CAT. NO.	1023	TYPE	Flake	MATERIAL	Flint
DATE FROM	Late Glacial	TO	Neolithic		
PROVENANCE	2 Solent				
CHART NO.					
PROVENANCE 1	Unprovenanced Solent. Untraced in MW catalogue				
PROVENANCE 2					
PROVENANCE 3					
FINDER NAME					
FIND CAUSE					
FIND DATE					
COMPLETENESS	Yes				
CONDITION	Slightly rolled				
PATINATION	Unpatinated				
LENGTH	52	WIDTH	39	THICKNESS	6
WEIGHT	12				
DESCRIPTION	Miscellaneous core trimming flake with abraded butt from prepared core. ?soft hammer.				
PHOTO NO.	R0010192	PHOTOGRAPHER	MHT		



CAT. NO. TYPE MATERIAL
DATE FROM TO

PROVENANCE
CHART NO.
PROVENANCE 1
PROVENANCE 2
PROVENANCE 3

FINDER NAME
FIND CAUSE
FIND DATE

COMPLETENESS
CONDITION
PATINATION

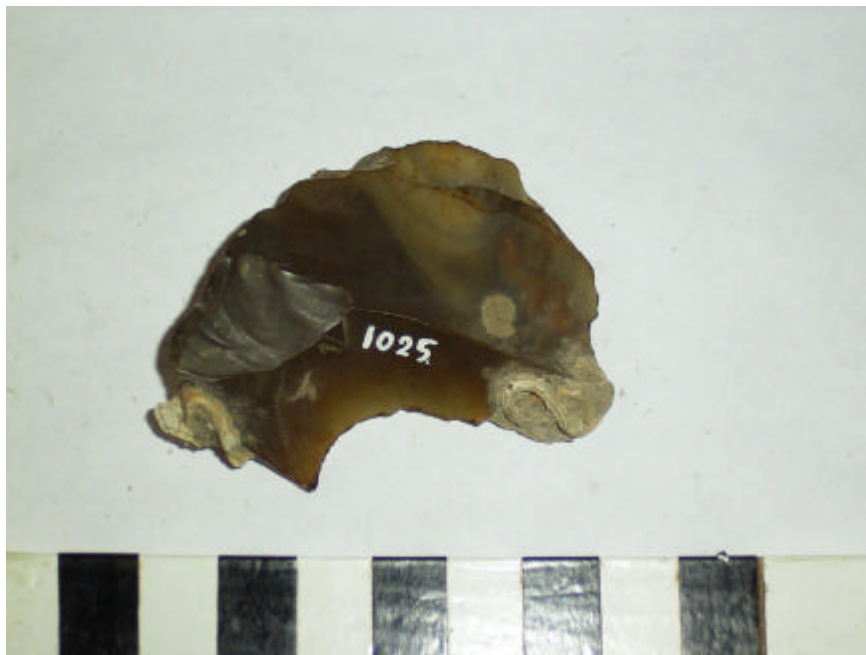
LENGTH WIDTH THICKNESS WEIGHT

DESCRIPTION

PHOTO NO. PHOTOGRAPHER



CAT. NO.	1025	TYPE	Rejuvenation tablet	MATERIAL	Flint
DATE FROM	Late Glacial	TO	Late Glacial		
PROVENANCE	2 Solent				
CHART NO.					
PROVENANCE 1	Unprovenanced Solent. Untraced in MW catalogue				
PROVENANCE 2					
PROVENANCE 3					
FINDER NAME					
FIND CAUSE					
FIND DATE					
COMPLETENESS	Yes				
CONDITION	Sharp				
PATINATION	Unpatinated				
LENGTH	46	WIDTH	56	THICKNESS	8
WEIGHT	22				
DESCRIPTION	Rejuvenation tablet from large core. Soft hammer, well executed. Cannot see this being later.				
PHOTO NO.	R0010191	PHOTOGRAPHER	MHT		



CAT. NO. TYPE MATERIAL
DATE FROM TO

PROVENANCE
CHART NO.
PROVENANCE 1
PROVENANCE 2
PROVENANCE 3

FINDER NAME
FIND CAUSE
FIND DATE

COMPLETENESS
CONDITION
PATINATION

LENGTH WIDTH THICKNESS WEIGHT

DESCRIPTION

PHOTO NO. PHOTOGRAPHER



CAT. NO.	1027	TYPE	Blade	MATERIAL	Flint
DATE FROM	Late Glacial	TO	Neolithic		
PROVENANCE	2 Solent				
CHART NO.					
PROVENANCE 1	Unprovenanced Solent. Untraced in MW catalogue				
PROVENANCE 2					
PROVENANCE 3					
FINDER NAME					
FIND CAUSE					
FIND DATE					
COMPLETENESS	Yes				
CONDITION	Sharp				
PATINATION	Unpatinated				
LENGTH	64	WIDTH	15	THICKNESS	7
WEIGHT	4				
DESCRIPTION	Tertiary blade with traces of cresting at distal tip. Abraded butt, soft hammer				
PHOTO NO.	R0010204	PHOTOGRAPHER	MHT		



CAT. NO.	1028	TYPE	Blade	MATERIAL	Flint
DATE FROM	Mesolithic	TO	Neolithic		
PROVENANCE	2 Solent				
CHART NO.					
PROVENANCE 1	Unprovenanced Solent. Untraced in MW catalogue				
PROVENANCE 2					
PROVENANCE 3					
FINDER NAME					
FIND CAUSE					
FIND DATE					
COMPLETENESS	Yes				
CONDITION	Sharp				
PATINATION	Unpatinated				
LENGTH	53	WIDTH	14	THICKNESS	8
WEIGHT	4				
DESCRIPTION	Naturally backed blade. Soft hammer with ?abraded butt. Not necessarily thought to be earlier				
PHOTO NO.	R0010203	PHOTOGRAPHER	MHT		



CAT. NO. TYPE MATERIAL
DATE FROM TO

PROVENANCE
CHART NO.
PROVENANCE 1
PROVENANCE 2
PROVENANCE 3

FINDER NAME
FIND CAUSE
FIND DATE

COMPLETENESS
CONDITION
PATINATION

LENGTH WIDTH THICKNESS WEIGHT

DESCRIPTION

PHOTO NO. PHOTOGRAPHER



CAT. NO. TYPE MATERIAL
DATE FROM TO

PROVENANCE
CHART NO.
PROVENANCE 1
PROVENANCE 2
PROVENANCE 3

FINDER NAME
FIND CAUSE
FIND DATE

COMPLETENESS
CONDITION
PATINATION

LENGTH WIDTH THICKNESS WEIGHT
DESCRIPTION

PHOTO NO. PHOTOGRAPHER



CAT. NO. TYPE MATERIAL
DATE FROM TO

PROVENANCE
CHART NO.
PROVENANCE 1
PROVENANCE 2
PROVENANCE 3

FINDER NAME
FIND CAUSE
FIND DATE

COMPLETENESS
CONDITION
PATINATION

LENGTH WIDTH THICKNESS WEIGHT

DESCRIPTION

PHOTO NO. PHOTOGRAPHER



CAT. NO. 1032 TYPE Blade MATERIAL Flint
DATE FROM Late Glacial TO Early Neolithic

PROVENANCE 2 Solent
CHART NO.
PROVENANCE 1 Unprovenanced Solent. Untraced in MW catalogue
PROVENANCE 2
PROVENANCE 3

FINDER NAME
FIND CAUSE
FIND DATE

COMPLETENESS Yes
CONDITION Mint
PATINATION Unpatinated

LENGTH 68 WIDTH 20 THICKNESS 6 WEIGHT 9

DESCRIPTION Tertiary blade from single platform core. Abraded soft hammer butt. Probably Mesolithic

PHOTO NO. R0010218 PHOTOGRAPHER MHT



CAT. NO. 1033 TYPE Crested blade MATERIAL Flint
DATE FROM Late Glacial TO Mesolithic

PROVENANCE 2 Solent
CHART NO.
PROVENANCE 1 Unprovenanced Solent. Untraced in MW catalogue
PROVENANCE 2
PROVENANCE 3

FINDER NAME
FIND CAUSE
FIND DATE

COMPLETENESS Yes
CONDITION Mint
PATINATION Unpatinated

LENGTH 66 WIDTH 18 THICKNESS 14 WEIGHT 13

DESCRIPTION Probably remedial blade from single platform core with unifacial cresting at distal end. Abraded soft hammer butt.

PHOTO NO. PHOTOGRAPHER

CAT. NO. TYPE MATERIAL
DATE FROM TO

PROVENANCE
CHART NO.
PROVENANCE 1
PROVENANCE 2
PROVENANCE 3

FINDER NAME
FIND CAUSE
FIND DATE

COMPLETENESS
CONDITION
PATINATION

LENGTH WIDTH THICKNESS WEIGHT

DESCRIPTION

PHOTO NO. PHOTOGRAPHER



CAT. NO. 1035 TYPE Flake MATERIAL Flint
DATE FROM Late Glacial TO Neolithic

PROVENANCE 2 Solent
CHART NO.
PROVENANCE 1 Unprovenanced Solent. Untraced in MW catalogue
PROVENANCE 2
PROVENANCE 3

FINDER NAME
FIND CAUSE
FIND DATE

COMPLETENESS Yes
CONDITION Sharp
PATINATION Unpatinated

LENGTH 60 WIDTH 51 THICKNESS 12 WEIGHT 31

DESCRIPTION Miscellaneous core trimming flake from opposed platform core. Abraded butt, soft hammer. Probably Late Glacial (or Neolithic).

PHOTO NO. R0010206 PHOTOGRAPHER MHT



CAT. NO.	1036	TYPE	Blade	MATERIAL	Flint
DATE FROM	Early Mesolithic	TO	Early Neolithic		
PROVENANCE	2 Solent				
CHART NO.					
PROVENANCE 1	Unprovenanced Solent. Untraced in MW catalogue				
PROVENANCE 2					
PROVENANCE 3					
FINDER NAME					
FIND CAUSE					
FIND DATE					
COMPLETENESS	Yes				
CONDITION	Sharp				
PATINATION	Unpatinated				
LENGTH	55	WIDTH	16	THICKNESS	7
WEIGHT	3				
DESCRIPTION	Undiagnostic miscellaneous tertiary blade.				
PHOTO NO.	R0010198	PHOTOGRAPHER	MHT		



CAT. NO.	1037	TYPE	Blade	MATERIAL	Flint
DATE FROM	Early Mesolithic	TO	Late Mesolithic		
PROVENANCE	2 Solent				
CHART NO.					
PROVENANCE 1	Unprovenanced Solent. Untraced in MW catalogue				
PROVENANCE 2					
PROVENANCE 3					
FINDER NAME					
FIND CAUSE					
FIND DATE					
COMPLETENESS	Yes				
CONDITION	Sharp				
PATINATION	Unpatinated				
LENGTH	66	WIDTH	19	THICKNESS	14
WEIGHT	16				
DESCRIPTION	Plunging core preparation blade to create new flaking face from opposed platform with abraded edge. Soft hammer				
PHOTO NO.	R0010197	PHOTOGRAPHER	MHT		



CAT. NO. TYPE MATERIAL
DATE FROM TO

PROVENANCE
CHART NO.
PROVENANCE 1
PROVENANCE 2
PROVENANCE 3

FINDER NAME
FIND CAUSE
FIND DATE

COMPLETENESS
CONDITION
PATINATION

LENGTH WIDTH THICKNESS WEIGHT
DESCRIPTION

PHOTO NO. PHOTOGRAPHER



CAT. NO.	1039	TYPE	Blade	MATERIAL	Flint
DATE FROM	Late Glacial	TO	Neolithic		
PROVENANCE	2 Solent				
CHART NO.					
PROVENANCE 1	Unprovenanced Solent. Untraced in MW catalogue				
PROVENANCE 2					
PROVENANCE 3					
FINDER NAME					
FIND CAUSE					
FIND DATE					
COMPLETENESS	Yes				
CONDITION	Sharp				
PATINATION	Unpatinated				
LENGTH	55	WIDTH	20	THICKNESS	6
WEIGHT	6				
DESCRIPTION	Partially naturally backed blade from single platform blade core with abraded butt. ?Mesolithic				
PHOTO NO.	R0010201	PHOTOGRAPHER	MHT		



CAT. NO. TYPE MATERIAL
DATE FROM TO

PROVENANCE
CHART NO.
PROVENANCE 1
PROVENANCE 2
PROVENANCE 3

FINDER NAME
FIND CAUSE
FIND DATE

COMPLETENESS
CONDITION
PATINATION

LENGTH WIDTH THICKNESS WEIGHT
DESCRIPTION

PHOTO NO. PHOTOGRAPHER



CAT. NO. TYPE MATERIAL
DATE FROM TO

PROVENANCE
CHART NO.
PROVENANCE 1
PROVENANCE 2
PROVENANCE 3

FINDER NAME
FIND CAUSE
FIND DATE

COMPLETENESS
CONDITION
PATINATION

LENGTH WIDTH THICKNESS WEIGHT

DESCRIPTION

PHOTO NO. PHOTOGRAPHER



CAT. NO. TYPE MATERIAL
DATE FROM TO

PROVENANCE
CHART NO.
PROVENANCE 1
PROVENANCE 2
PROVENANCE 3

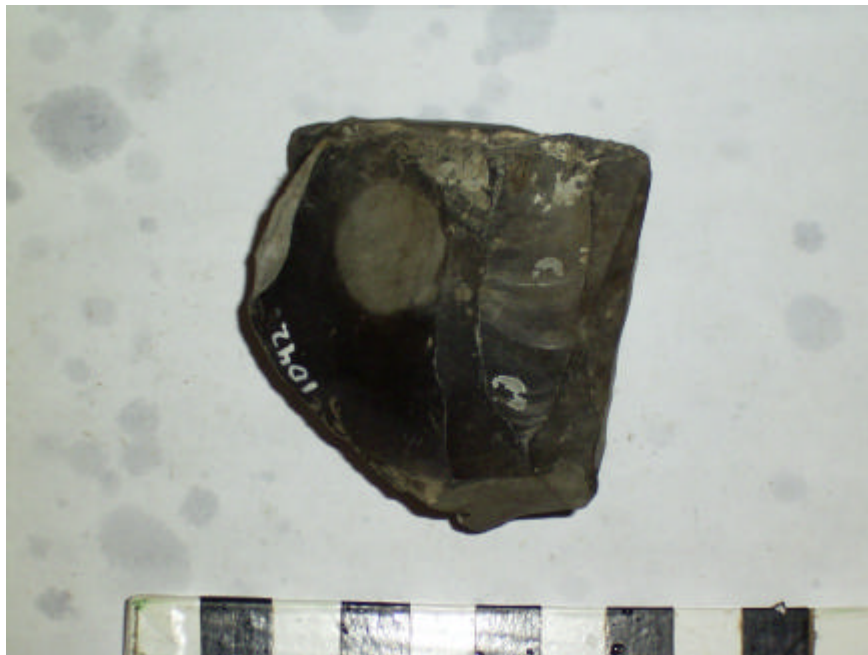
FINDER NAME
FIND CAUSE
FIND DATE

COMPLETENESS
CONDITION
PATINATION

LENGTH WIDTH THICKNESS WEIGHT

DESCRIPTION

PHOTO NO. PHOTOGRAPHER



CAT. NO. TYPE MATERIAL
DATE FROM TO

PROVENANCE
CHART NO.
PROVENANCE 1
PROVENANCE 2
PROVENANCE 3

FINDER NAME
FIND CAUSE
FIND DATE

COMPLETENESS
CONDITION
PATINATION

LENGTH WIDTH THICKNESS WEIGHT
DESCRIPTION

PHOTO NO. PHOTOGRAPHER



CAT. NO. TYPE MATERIAL
 DATE FROM TO

PROVENANCE
 CHART NO.
 PROVENANCE 1
 PROVENANCE 2
 PROVENANCE 3

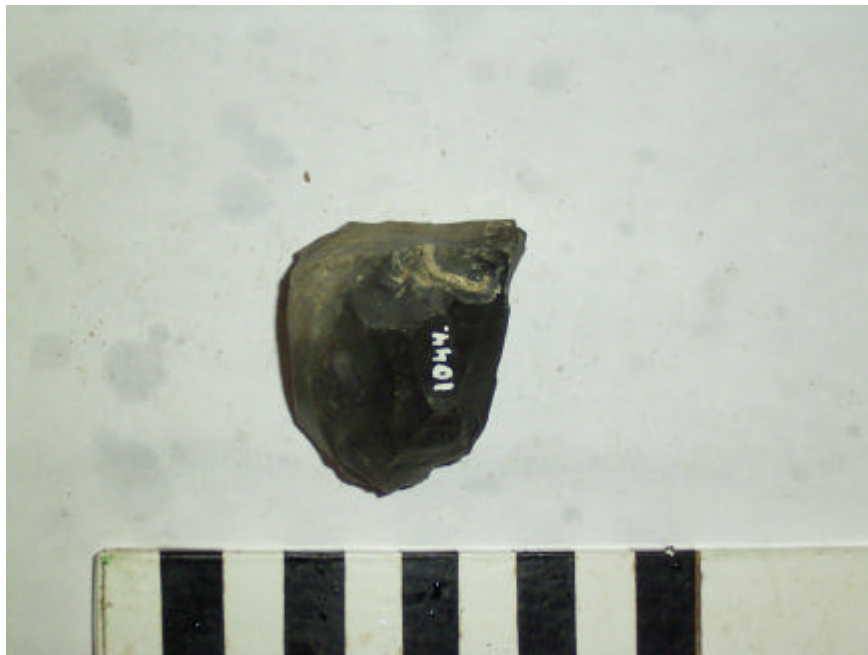
FINDER NAME
 FIND CAUSE
 FIND DATE

COMPLETENESS
 CONDITION
 PATINATION

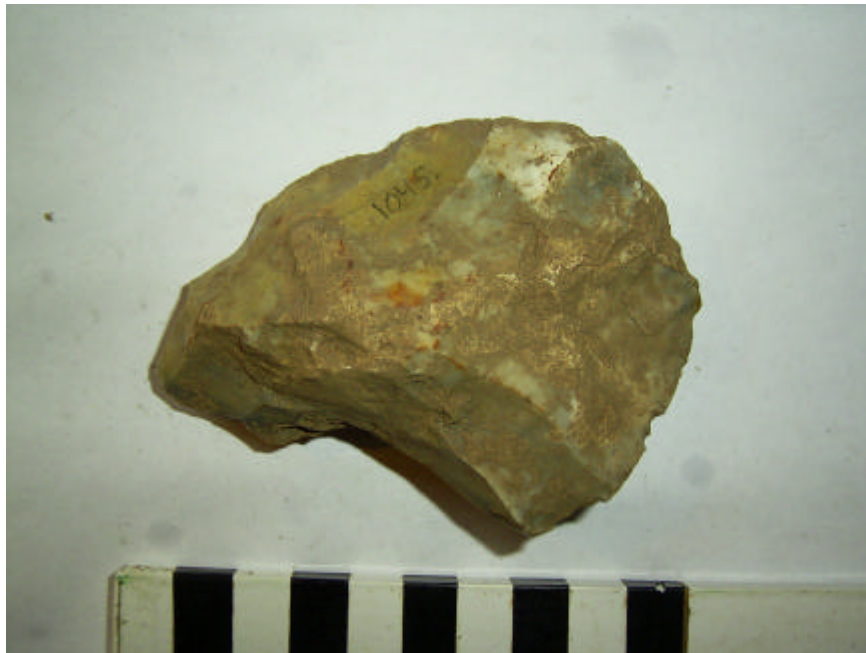
LENGTH WIDTH THICKNESS WEIGHT

DESCRIPTION

PHOTO NO. PHOTOGRAPHER



CAT. NO.	1045	TYPE	Handaxe	MATERIAL	Flint
DATE FROM	Lower Palaeolithic	TO	Lower Palaeolithic		
PROVENANCE	unprovenanced				
CHART NO.					
PROVENANCE 1	Unprovenanced. Untraced in MW catalogue				
PROVENANCE 2					
PROVENANCE 3					
FINDER NAME					
FIND CAUSE					
FIND DATE					
COMPLETENESS	Broken				
CONDITION	Rolled				
PATINATION	Very lightly stained				
LENGTH	93	WIDTH	70	THICKNESS	37
WEIGHT	182				
DESCRIPTION	Broken twisted ovate. Residual patches of dirt suggest it may well be from field walking and not the sea				
PHOTO NO.	R0010233, R0010234		PHOTOGRAPHER	MHT	



CAT. NO. TYPE MATERIAL
DATE FROM TO

PROVENANCE
CHART NO.
PROVENANCE 1
PROVENANCE 2
PROVENANCE 3

FINDER NAME
FIND CAUSE
FIND DATE

COMPLETENESS
CONDITION
PATINATION

LENGTH WIDTH THICKNESS WEIGHT

DESCRIPTION

PHOTO NO. PHOTOGRAPHER



CAT. NO. TYPE MATERIAL
DATE FROM TO

PROVENANCE
CHART NO.
PROVENANCE 1
PROVENANCE 2
PROVENANCE 3

FINDER NAME
FIND CAUSE
FIND DATE

COMPLETENESS
CONDITION
PATINATION

LENGTH WIDTH THICKNESS WEIGHT

DESCRIPTION

PHOTO NO. PHOTOGRAPHER



CAT. NO.	1048	TYPE	Tranchet axe	MATERIAL	Flint
DATE FROM	Mesolithic	TO	Mesolithic		
PROVENANCE	2 Solent				
CHART NO.					
PROVENANCE 1	Unprovenanced Solent. Untraced in MW catalogue				
PROVENANCE 2					
PROVENANCE 3					
FINDER NAME					
FIND CAUSE					
FIND DATE					
COMPLETENESS	Yes				
CONDITION	Sharp				
PATINATION	Unpatinated				
LENGTH	171	WIDTH	47	THICKNESS	37
WEIGHT	349				
DESCRIPTION	Natural cylinder of flint bifacially finished at one end by tranchet blow. Butt end almost totally unworked.				
PHOTO NO.	R0010241	PHOTOGRAPHER	MHT		



CAT. NO. TYPE MATERIAL
DATE FROM TO

PROVENANCE
CHART NO.
PROVENANCE 1
PROVENANCE 2
PROVENANCE 3

FINDER NAME
FIND CAUSE
FIND DATE

COMPLETENESS
CONDITION
PATINATION

LENGTH WIDTH THICKNESS WEIGHT
DESCRIPTION

PHOTO NO. PHOTOGRAPHER



CAT. NO. TYPE MATERIAL
 DATE FROM TO

PROVENANCE
 CHART NO.
 PROVENANCE 1
 PROVENANCE 2
 PROVENANCE 3

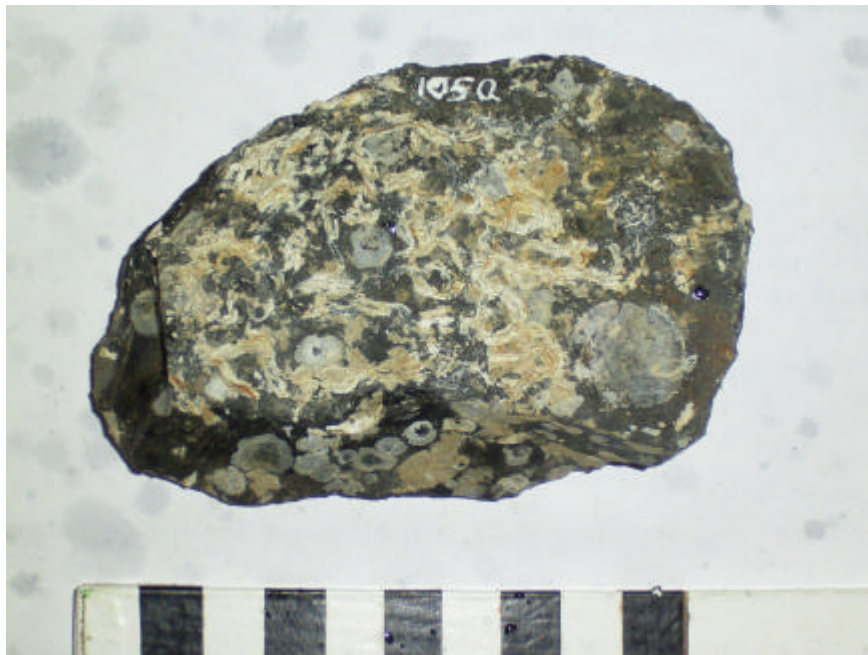
FINDER NAME
 FIND CAUSE
 FIND DATE

COMPLETENESS
 CONDITION
 PATINATION

LENGTH WIDTH THICKNESS WEIGHT

DESCRIPTION

PHOTO NO. PHOTOGRAPHER



CAT. NO. TYPE MATERIAL
 DATE FROM TO

PROVENANCE
 CHART NO.
 PROVENANCE 1
 PROVENANCE 2
 PROVENANCE 3

FINDER NAME
 FIND CAUSE
 FIND DATE

COMPLETENESS
 CONDITION
 PATINATION

LENGTH WIDTH THICKNESS WEIGHT

DESCRIPTION

PHOTO NO. PHOTOGRAPHER



CAT. NO. TYPE MATERIAL
DATE FROM TO

PROVENANCE
CHART NO.
PROVENANCE 1
PROVENANCE 2
PROVENANCE 3

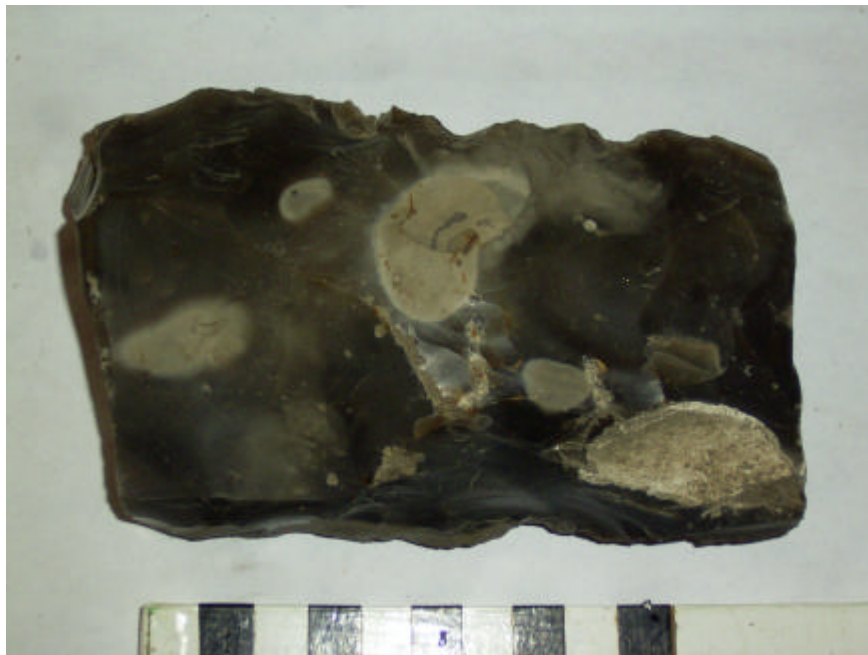
FINDER NAME
FIND CAUSE
FIND DATE

COMPLETENESS
CONDITION
PATINATION

LENGTH WIDTH THICKNESS WEIGHT

DESCRIPTION

PHOTO NO. PHOTOGRAPHER



CAT. NO. TYPE MATERIAL
DATE FROM TO

PROVENANCE
CHART NO.
PROVENANCE 1
PROVENANCE 2
PROVENANCE 3

FINDER NAME
FIND CAUSE
FIND DATE

COMPLETENESS
CONDITION
PATINATION

LENGTH WIDTH THICKNESS WEIGHT

DESCRIPTION

PHOTO NO. PHOTOGRAPHER



CAT. NO. TYPE MATERIAL
 DATE FROM TO

PROVENANCE
 CHART NO.
 PROVENANCE 1
 PROVENANCE 2
 PROVENANCE 3

FINDER NAME
 FIND CAUSE
 FIND DATE

COMPLETENESS
 CONDITION
 PATINATION

LENGTH WIDTH THICKNESS WEIGHT

DESCRIPTION

PHOTO NO. PHOTOGRAPHER



CAT. NO.	1055	TYPE	Tranchet axe	MATERIAL	Flint
DATE FROM	Mesolithic	TO	Mesolithic		
PROVENANCE	2 Solent				
CHART NO.					
PROVENANCE 1	Unprovenanced Solent. Untraced in MW catalogue				
PROVENANCE 2					
PROVENANCE 3					
FINDER NAME					
FIND CAUSE					
FIND DATE					
COMPLETENESS	Yes				
CONDITION	Slightly rolled				
PATINATION	Stained				
LENGTH	131	WIDTH	43	THICKNESS	34
WEIGHT	179				
DESCRIPTION	Lovely well flaked tranchet axe. Flaked all over to subtriangular section. Single tranchet blow to sharpen it.				
PHOTO NO.	R0010260	PHOTOGRAPHER	MHT		



CAT. NO. 1056 TYPE Flake MATERIAL Flint
DATE FROM Early Neolithic TO Late Neolithic

PROVENANCE 66 Tarrant Gunville, Blandford, Dorset

CHART NO.

PROVENANCE 1 Unprovenanced Tarrant Gunville. Untraced in MW catalogue

PROVENANCE 2

PROVENANCE 3

FINDER NAME

FIND CAUSE

FIND DATE

COMPLETENESS Yes

CONDITION Slightly rolled

PATINATION Unpatinated

LENGTH 61 WIDTH 51 THICKNESS 11 WEIGHT 35

DESCRIPTION Broad thin flake from Tarrant Gunville. Abraded/trimmed butt, hard hammer struck. Probably Late Neolithic.

PHOTO NO. R0010255 PHOTOGRAPHER MHT



CAT. NO. TYPE MATERIAL
DATE FROM TO

PROVENANCE
CHART NO.
PROVENANCE 1
PROVENANCE 2
PROVENANCE 3

FINDER NAME
FIND CAUSE
FIND DATE

COMPLETENESS
CONDITION
PATINATION

LENGTH WIDTH THICKNESS WEIGHT
DESCRIPTION

PHOTO NO. PHOTOGRAPHER



CAT. NO.	1058	TYPE	Tusk	MATERIAL	Ivory
DATE FROM		TO			
PROVENANCE	2 Solent				
CHART NO.					
PROVENANCE 1	Unprovenanced Solent. Untraced in MW catalogue				
PROVENANCE 2					
PROVENANCE 3					
FINDER NAME					
FIND CAUSE					
FIND DATE					
COMPLETENESS	No				
CONDITION					
PATINATION					
LENGTH		WIDTH		THICKNESS	
WEIGHT					
DESCRIPTION	2 fragments of tusk.				
PHOTO NO.	R0010169	PHOTOGRAPHER	MHT		



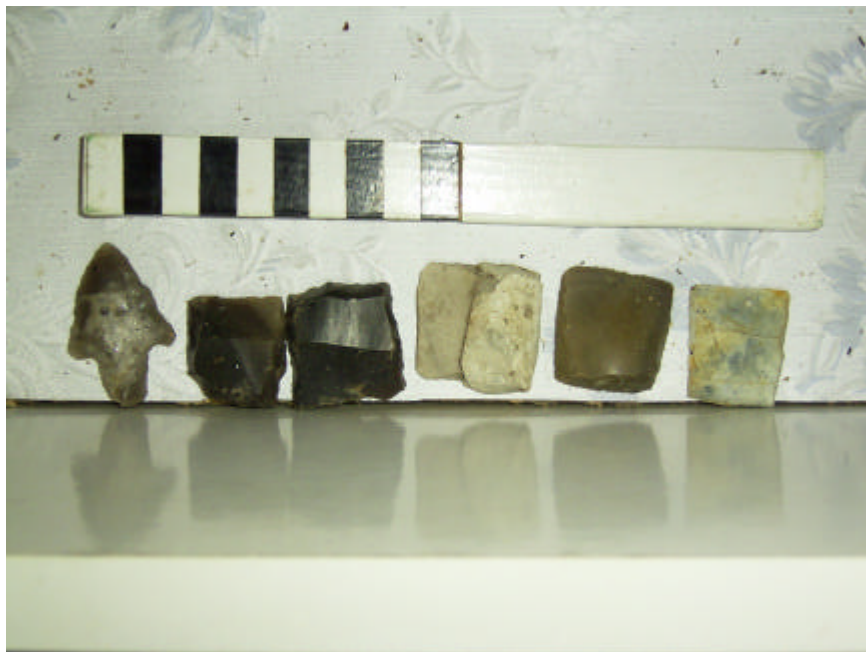
CAT. NO.	1059	TYPE	Worked flint	MATERIAL	Flint
DATE FROM		TO			
PROVENANCE		unprovenanced			
CHART NO.					
PROVENANCE 1					
PROVENANCE 2					
PROVENANCE 3					
FINDER NAME					
FIND CAUSE					
FIND DATE					
COMPLETENESS					
CONDITION					
PATINATION					
LENGTH		WIDTH		THICKNESS	
WEIGHT					
DESCRIPTION	61 worked flints, unprovenanced terrestrial.				
PHOTO NO.	R0010208	PHOTOGRAPHER	MHT		



CAT. NO.	1060	TYPE	Gunflint	MATERIAL	Flint (& lead)
DATE FROM		TO			
PROVENANCE	unprovenanced				
CHART NO.					
PROVENANCE 1					
PROVENANCE 2					
PROVENANCE 3					
FINDER NAME					
FIND CAUSE					
FIND DATE					
COMPLETENESS	Yes				
CONDITION					
PATINATION					
LENGTH		WIDTH		THICKNESS	
WEIGHT					
DESCRIPTION	5 gunflints, one of which is wrapped in lead.				
PHOTO NO.	R0010209	PHOTOGRAPHER	MHT		



CAT. NO.	1061	TYPE	Barbed and tanged arrowhead	MATERIAL	Flint
DATE FROM		TO			
PROVENANCE		unprovenanced			
CHART NO.					
PROVENANCE 1					
PROVENANCE 2					
PROVENANCE 3					
FINDER NAME					
FIND CAUSE					
FIND DATE					
COMPLETENESS	Yes				
CONDITION					
PATINATION					
LENGTH		WIDTH		THICKNESS	
WEIGHT					
DESCRIPTION	1 barbed/tanged arrowhead.				
PHOTO NO.	R0010209	PHOTOGRAPHER	MHT		



CAT. NO.	1062	TYPE	Antler, shed	MATERIAL	Antler
DATE FROM		TO			
PROVENANCE	2	Solent			
CHART NO.					
PROVENANCE 1	Unprovenanced Solent. Untraced in MW catalogue				
PROVENANCE 2					
PROVENANCE 3					
FINDER NAME					
FIND CAUSE					
FIND DATE					
COMPLETENESS	No				
CONDITION	Bad				
PATINATION					
LENGTH		WIDTH		THICKNESS	
WEIGHT					
DESCRIPTION	1 shed red deer antler.				
PHOTO NO.	R0010210	PHOTOGRAPHER	MHT		



CAT. NO.	1063	TYPE	Worked flint	MATERIAL	Flint
DATE FROM		TO			
PROVENANCE		unprovenanced			
CHART NO.					
PROVENANCE 1					
PROVENANCE 2					
PROVENANCE 3					
FINDER NAME					
FIND CAUSE					
FIND DATE					
COMPLETENESS					
CONDITION					
PATINATION					
LENGTH		WIDTH		THICKNESS	
WEIGHT					
DESCRIPTION	92 worked flints, unprovenanced terrestrial (in box also two potsherds).				
PHOTO NO.	R0010211	PHOTOGRAPHER	MHT		



CAT. NO.	1064	TYPE	Flake	MATERIAL	Flint
DATE FROM		TO			
PROVENANCE	unprovenanced				
CHART NO.					
PROVENANCE 1					
PROVENANCE 2					
PROVENANCE 3					
FINDER NAME					
FIND CAUSE					
FIND DATE					
COMPLETENESS					
CONDITION	Sharp				
PATINATION					
LENGTH		WIDTH		THICKNESS	
WEIGHT					
DESCRIPTION	5 flakes in reconstructed sickle.				
PHOTO NO.	R0010212	PHOTOGRAPHER	MHT		



CAT. NO.	1065	TYPE	Antler tine	MATERIAL	Antler
DATE FROM		TO			
PROVENANCE	2 Solent				
CHART NO.					
PROVENANCE 1	Unprovenanced Solent. Untraced in MW catalogue				
PROVENANCE 2					
PROVENANCE 3					
FINDER NAME					
FIND CAUSE					
FIND DATE					
COMPLETENESS					
CONDITION					
PATINATION					
LENGTH		WIDTH		THICKNESS	
WEIGHT					
DESCRIPTION	Antler tine, pres. red deer.				
PHOTO NO.	R0010169	PHOTOGRAPHER	MHT		



CAT. NO.	1066	TYPE	Antler, unshed	MATERIAL	Antler
DATE FROM		TO			
PROVENANCE	2 Solent				
CHART NO.					
PROVENANCE 1	Unprovenanced Solent. Untraced in MW catalogue				
PROVENANCE 2					
PROVENANCE 3					
FINDER NAME					
FIND CAUSE					
FIND DATE					
COMPLETENESS					
CONDITION					
PATINATION					
LENGTH		WIDTH		THICKNESS	
WEIGHT					
DESCRIPTION	Roe deer antler, unshed.				
PHOTO NO.	R0010169	PHOTOGRAPHER	MHT		



CAT. NO.	1067	TYPE	Antler, shed	MATERIAL	Antler
DATE FROM		TO			
PROVENANCE	2	Solent			
CHART NO.					
PROVENANCE 1	Unprovenanced Solent. Untraced in MW catalogue				
PROVENANCE 2					
PROVENANCE 3					
FINDER NAME					
FIND CAUSE					
FIND DATE					
COMPLETENESS	Yes				
CONDITION					
PATINATION					
LENGTH		WIDTH		THICKNESS	
WEIGHT					
DESCRIPTION	Roe deer antler, shed.				
PHOTO NO.	R0010169	PHOTOGRAPHER	MHT		



CAT. NO.	1068	TYPE	Pot	MATERIAL	Clay
DATE FROM	Prehistoric		TO	Prehistoric	
PROVENANCE	2 Solent				
CHART NO.					
PROVENANCE 1	Unprovenanced Solent. Untraced in MW catalogue				
PROVENANCE 2					
PROVENANCE 3					
FINDER NAME					
FIND CAUSE					
FIND DATE					
COMPLETENESS	No				
CONDITION	Fragmented, assembled				
PATINATION	Marine encrustation				
LENGTH		WIDTH		THICKNESS	
WEIGHT					
DESCRIPTION	Flat-bottomed prehistoric pot.				
PHOTO NO.	R0010220, R0010221, R0010222		PHOTOGRAPHER	MHT	



CAT. NO. TYPE MATERIAL

DATE FROM _____ TO _____

PROVENANCE

CHART NO.

PROVENANCE 1

PROVENANCE 2

PROVENANCE 3

FINDER NAME

FIND CAUSE

FIND DATE

COMPLETENESS

CONDITION

PATINATION

LENGTH WIDTH THICKNESS WEIGHT

DESCRIPTION

PHOTO NO. PHOTOGRAPHER

