

Figure 1



Figure 2

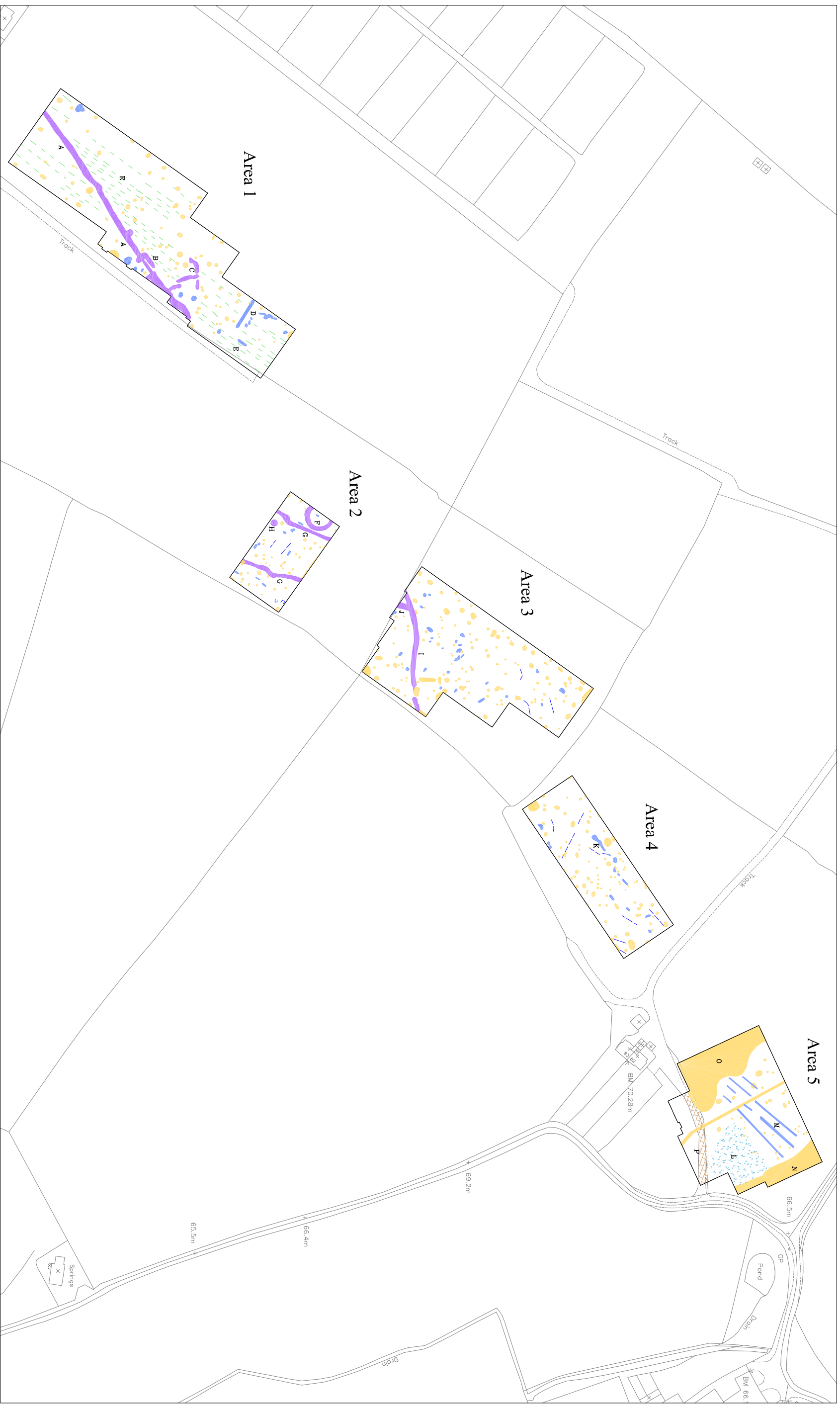
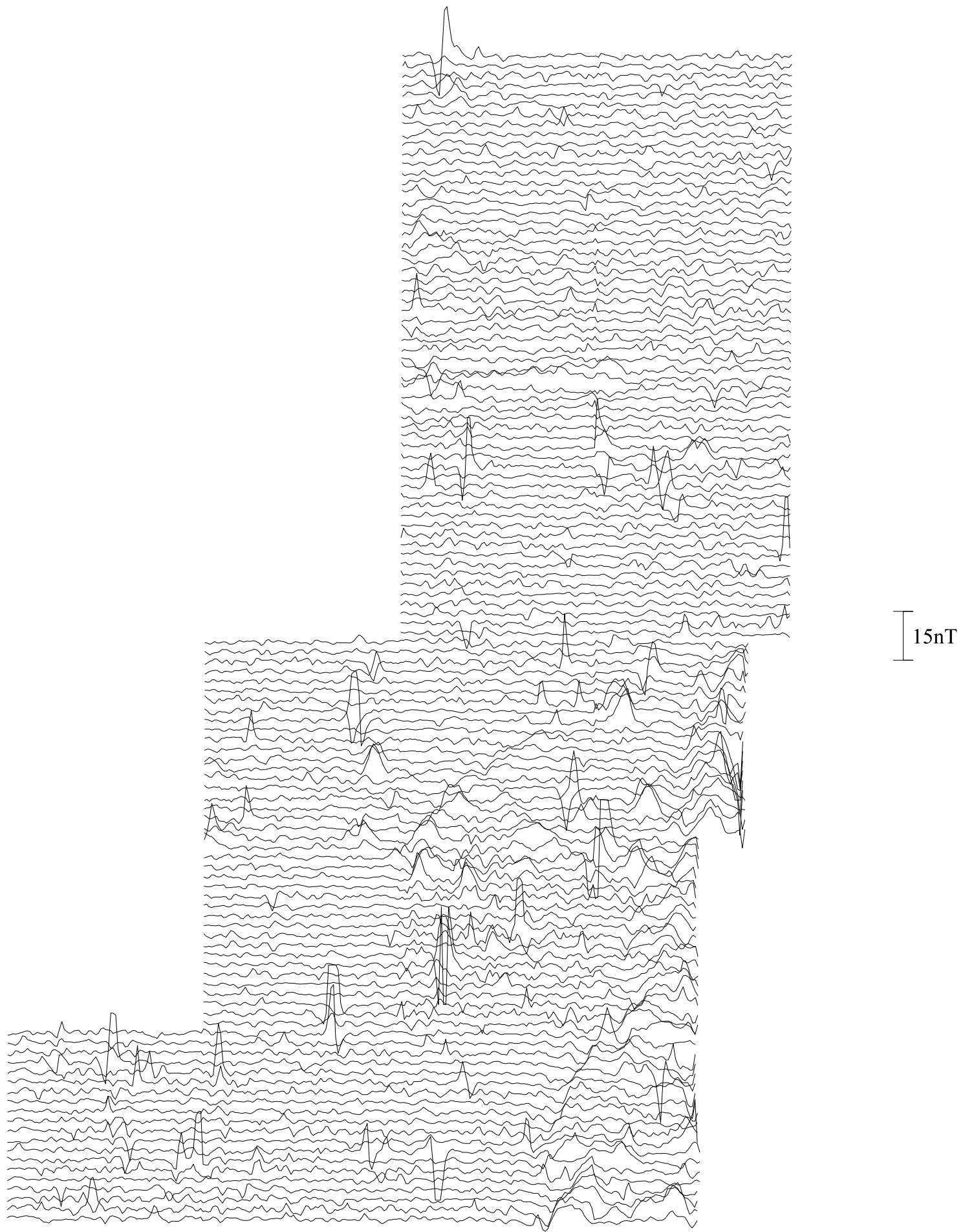
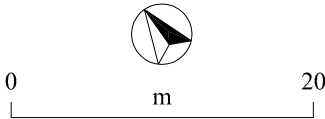
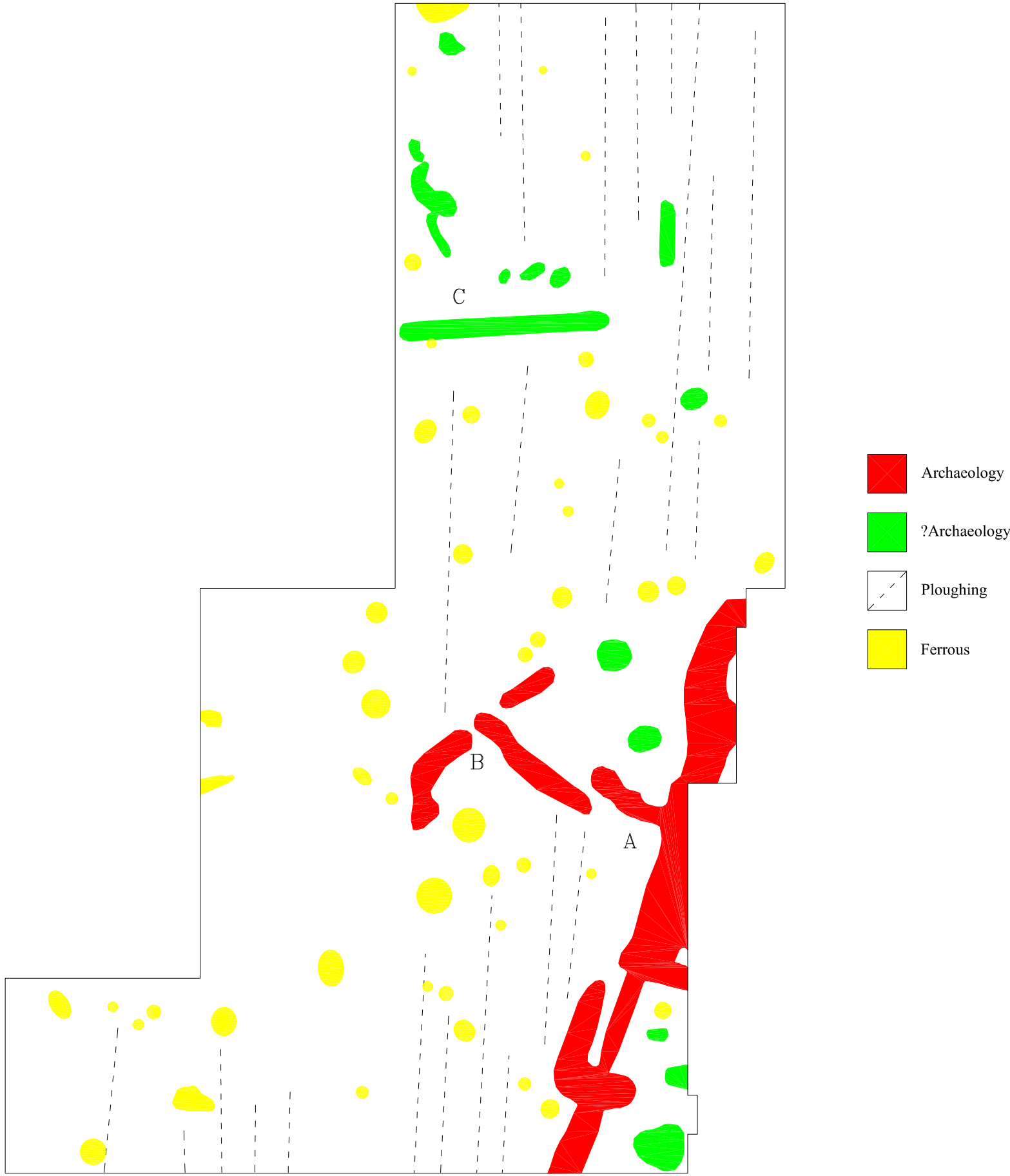


Figure 3

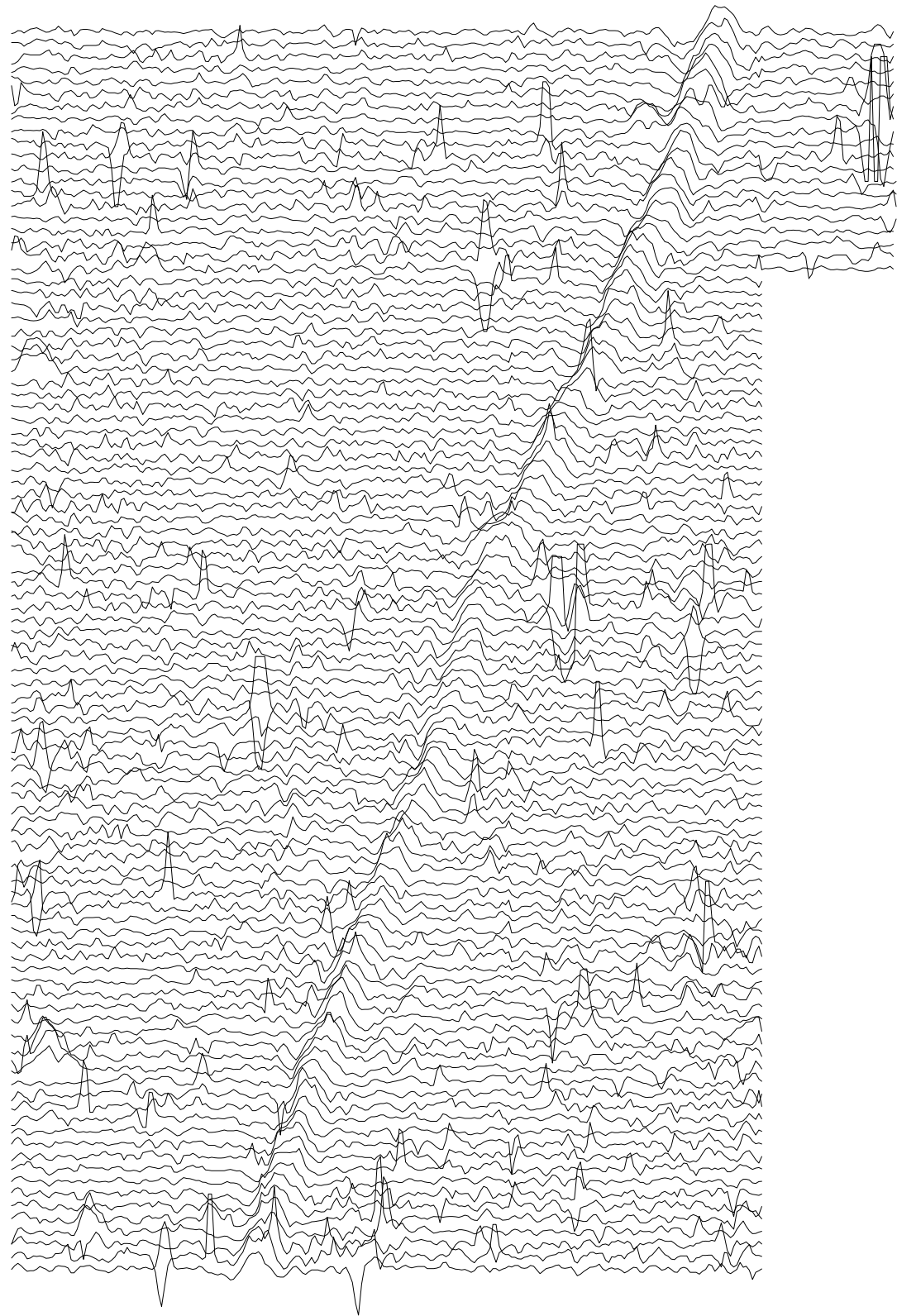
**Cranborne Chase
Area 1a**



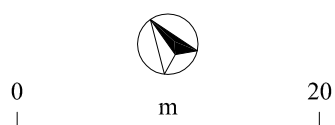
Cranborne Chase Area 1a



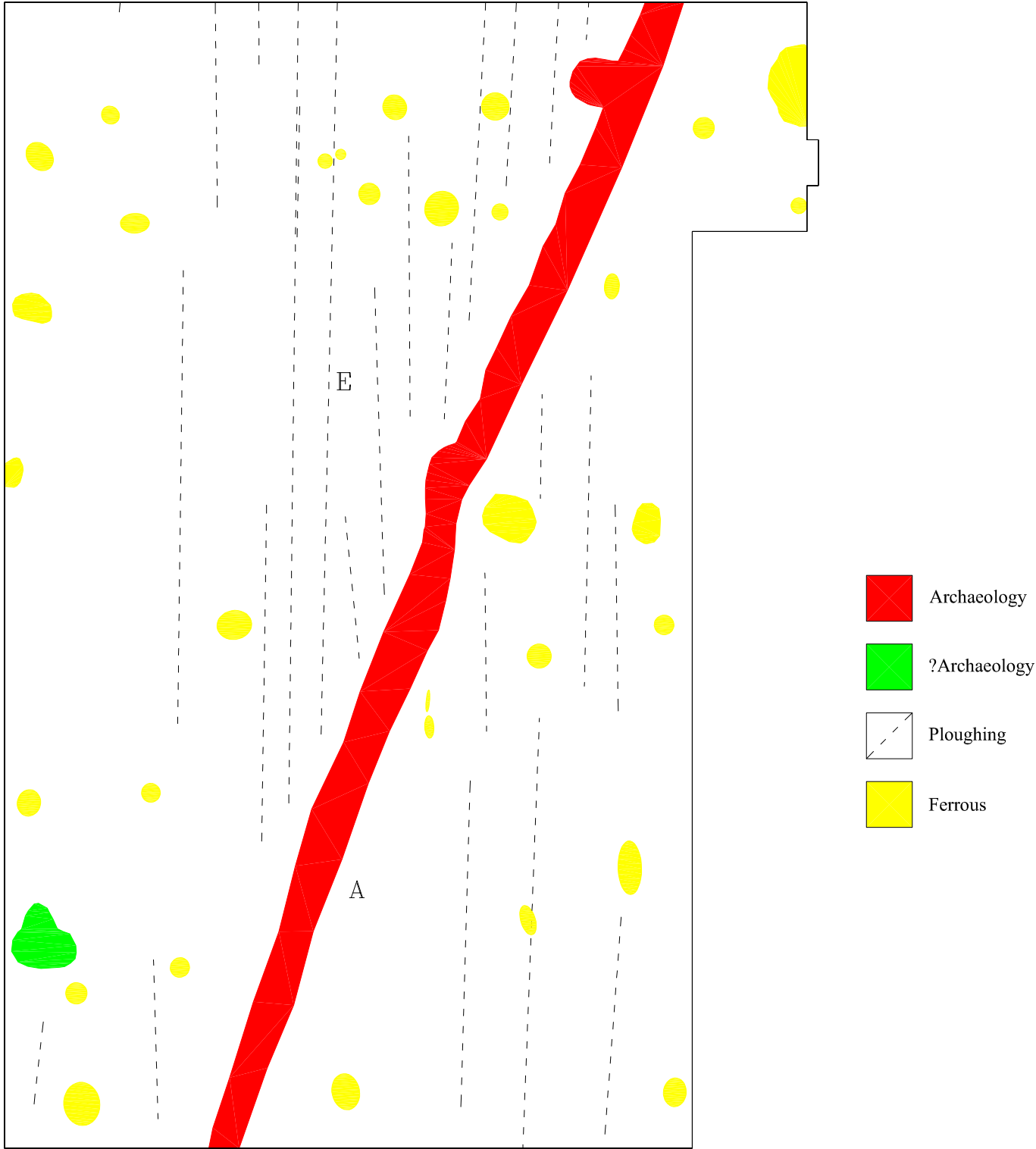
**Cranborne Chase
Area 1b**



15nT



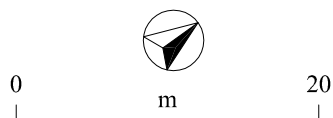
Cranborne Chase Area 1b



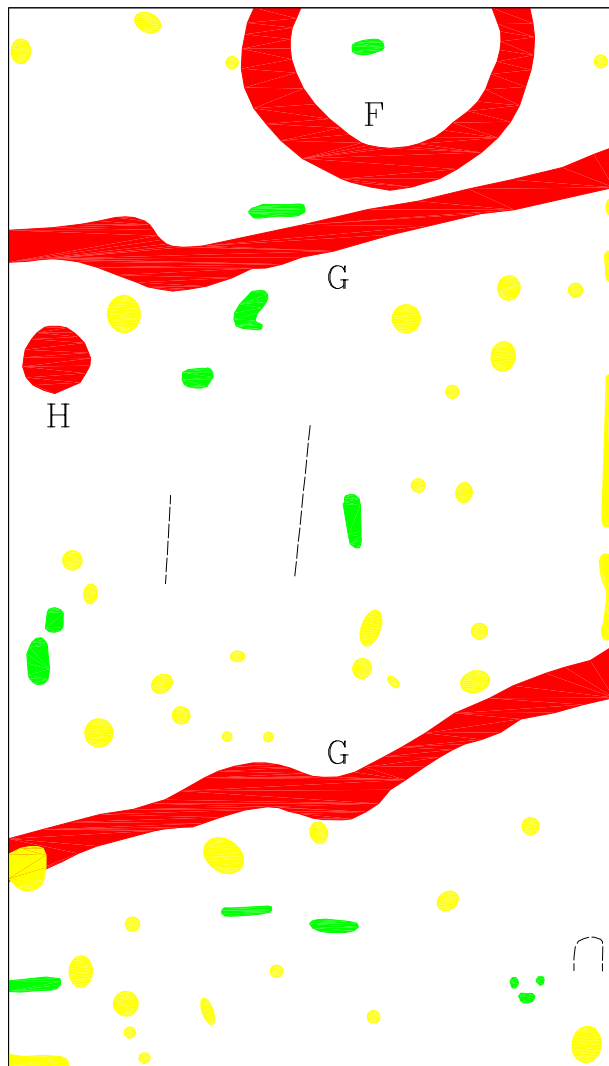
Cranborne Chase Area 2



15nT

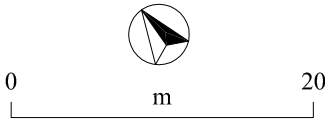
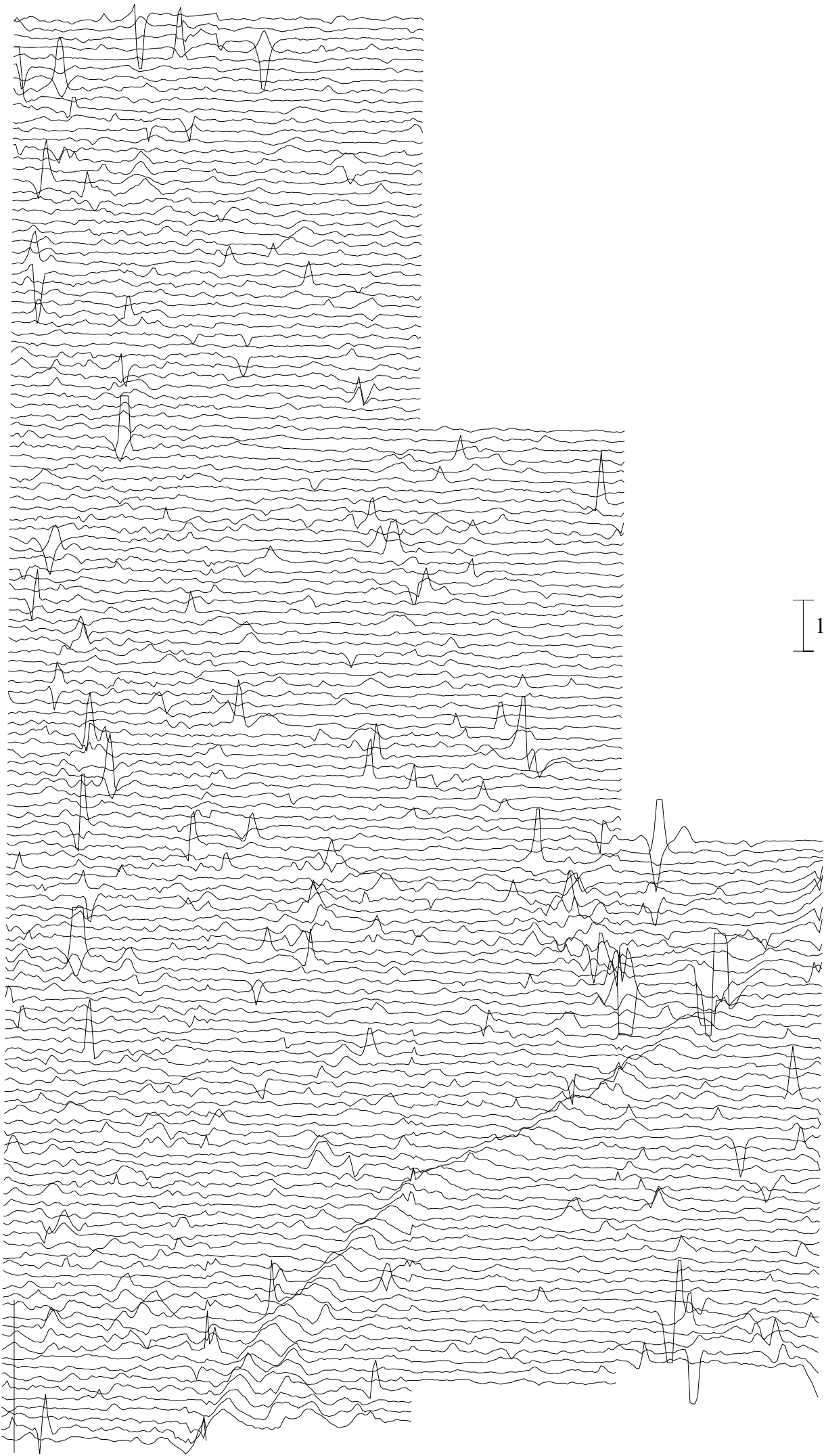


Cranborne Chase Area 2

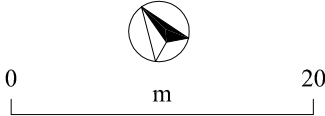
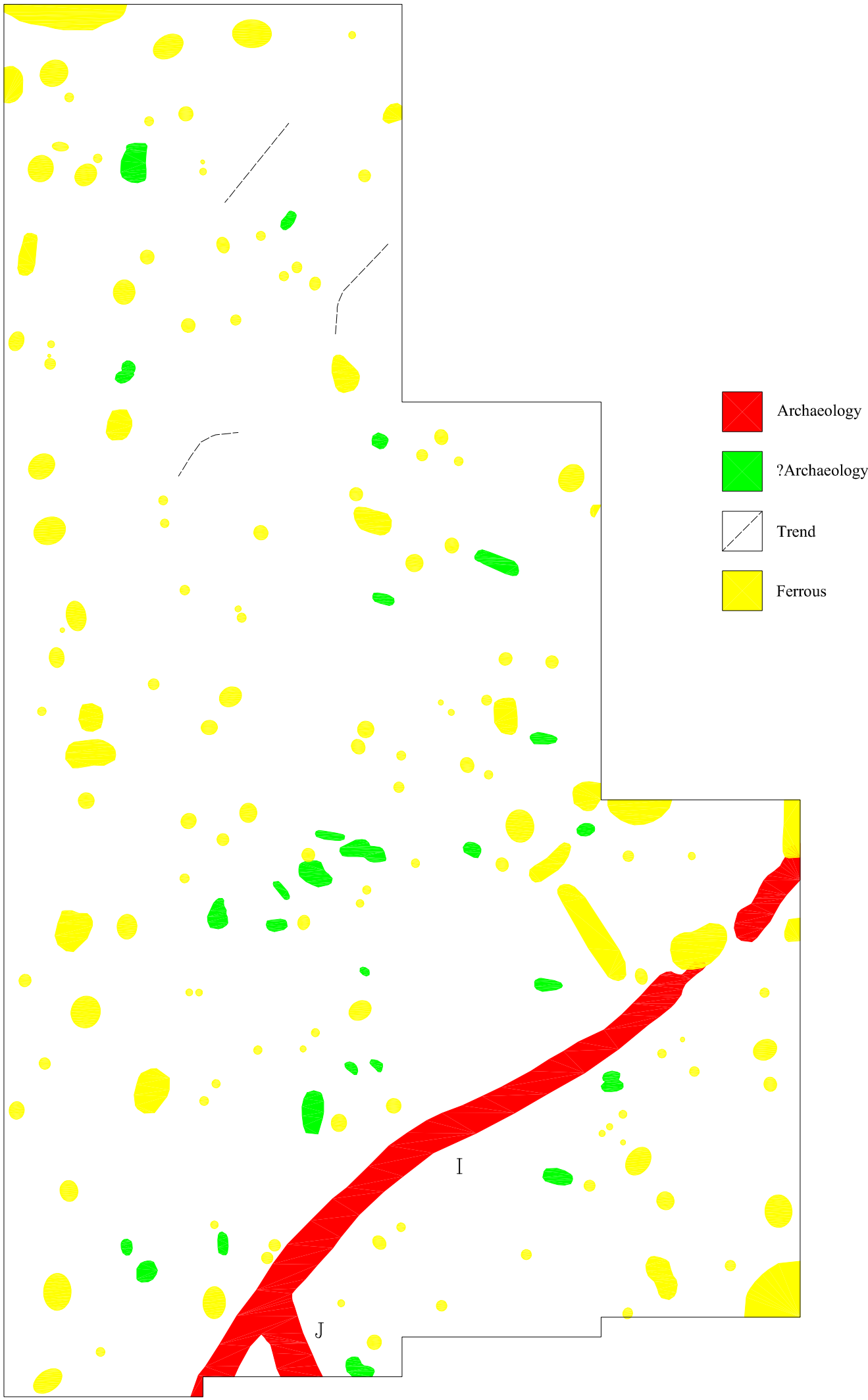


- Archaeology
- ?Archaeology
- Trend
- Ferrous

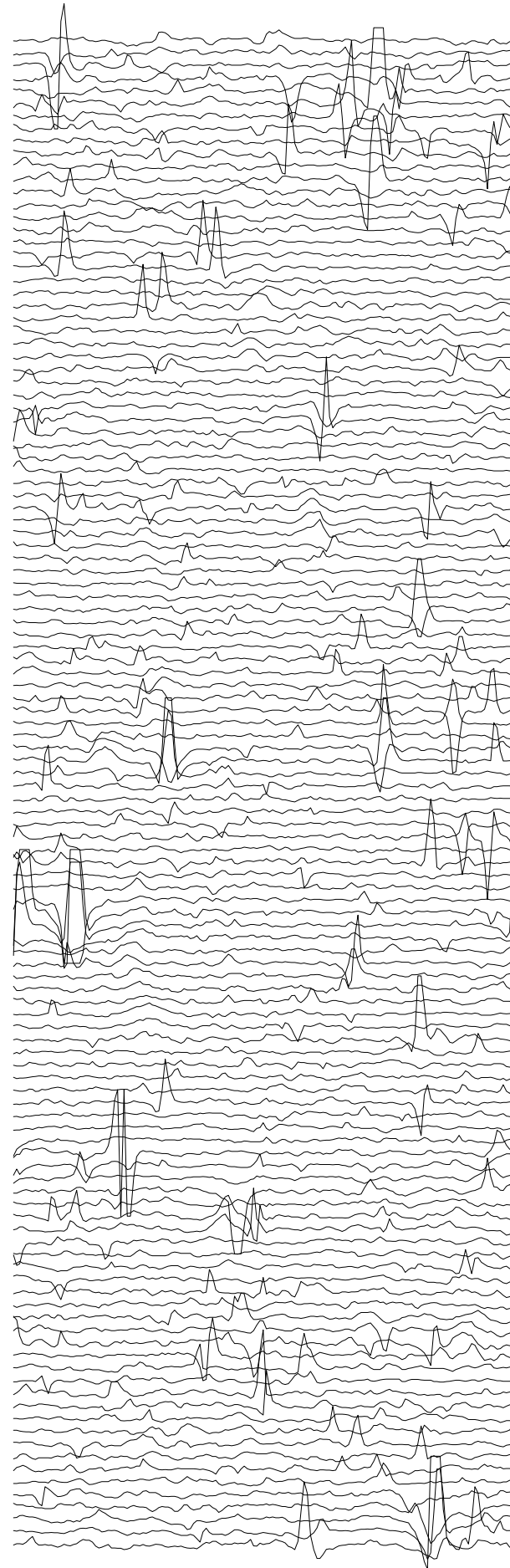
**Cranborne Chase
Area 3**



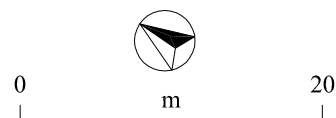
Cranborne Chase Area 3



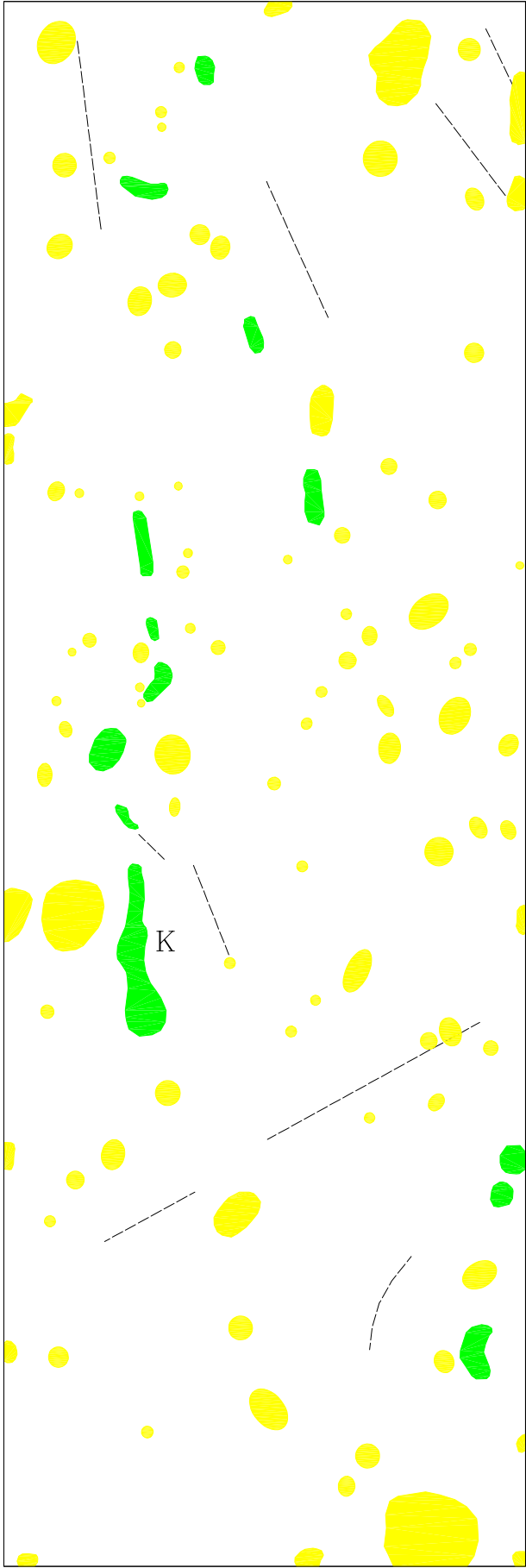
**Cranborne Chase
Area 4**



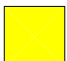


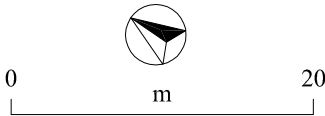
15nT



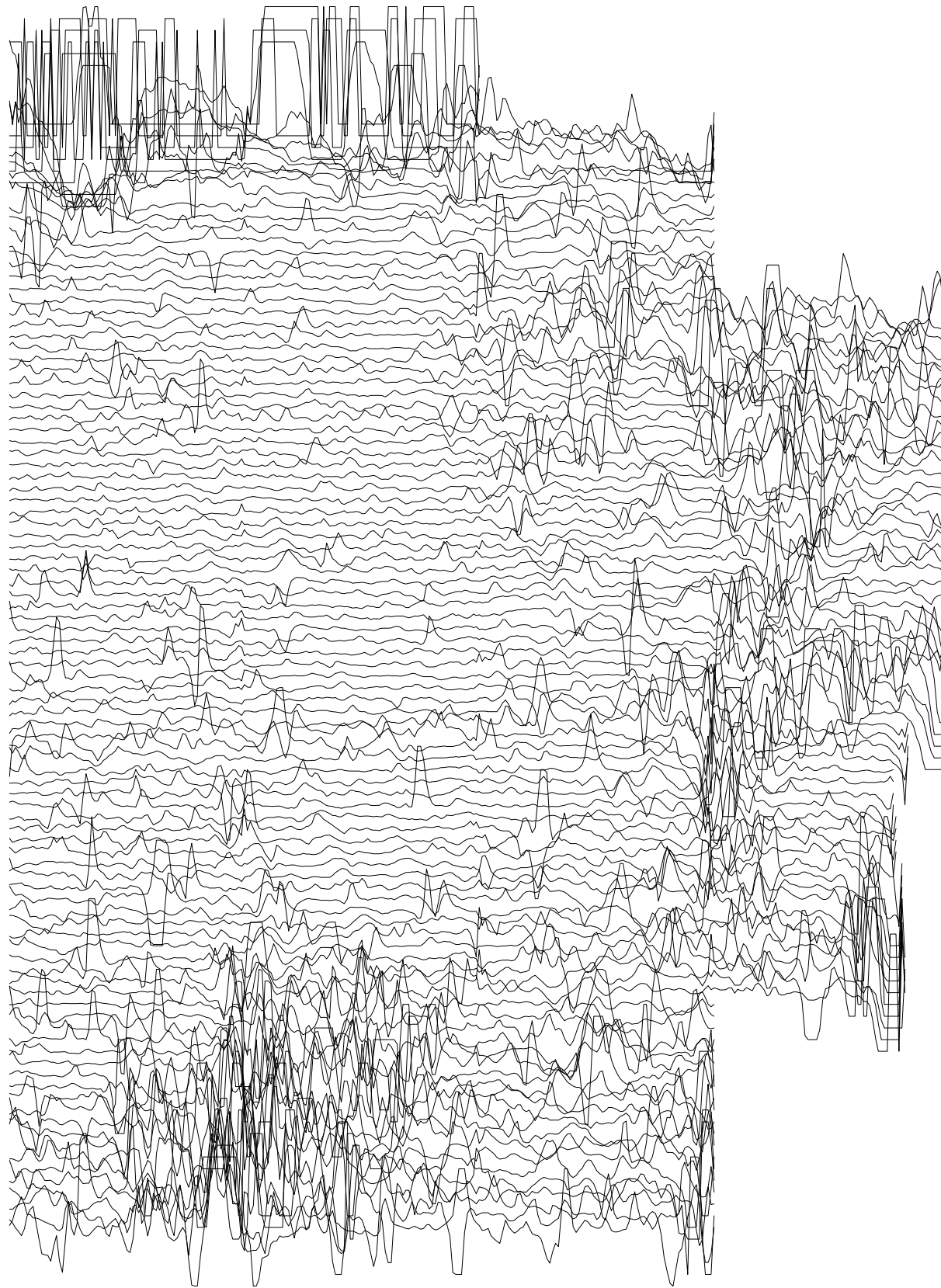
Cranborne Chase Area 4



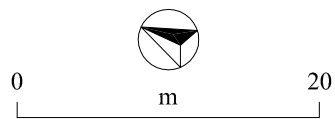
-  ?Archaeology
-  Trend
-  Ferrous



**Cranborne Chase
Area 5**



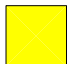
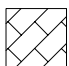


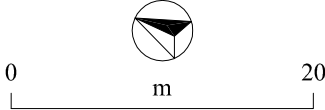
15nT



Cranborne Chase Area 5

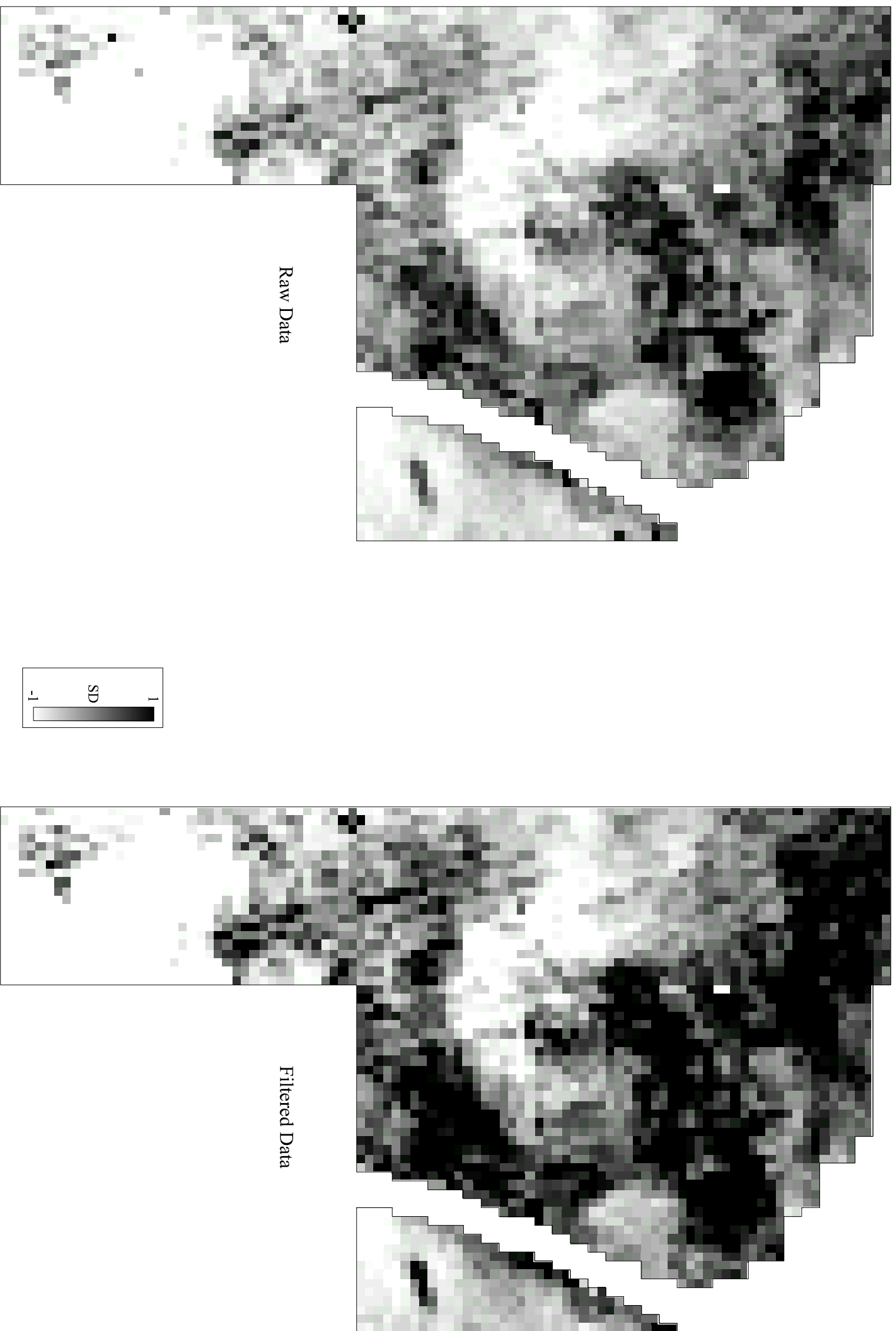


-  ?Archaeology
-  Area of Increased Magnetic Response
-  Ferrous
-  Modern Track



CRANBORNE CHASE

Resistance Data



CRANBORNE CHASE

Resistance Data

