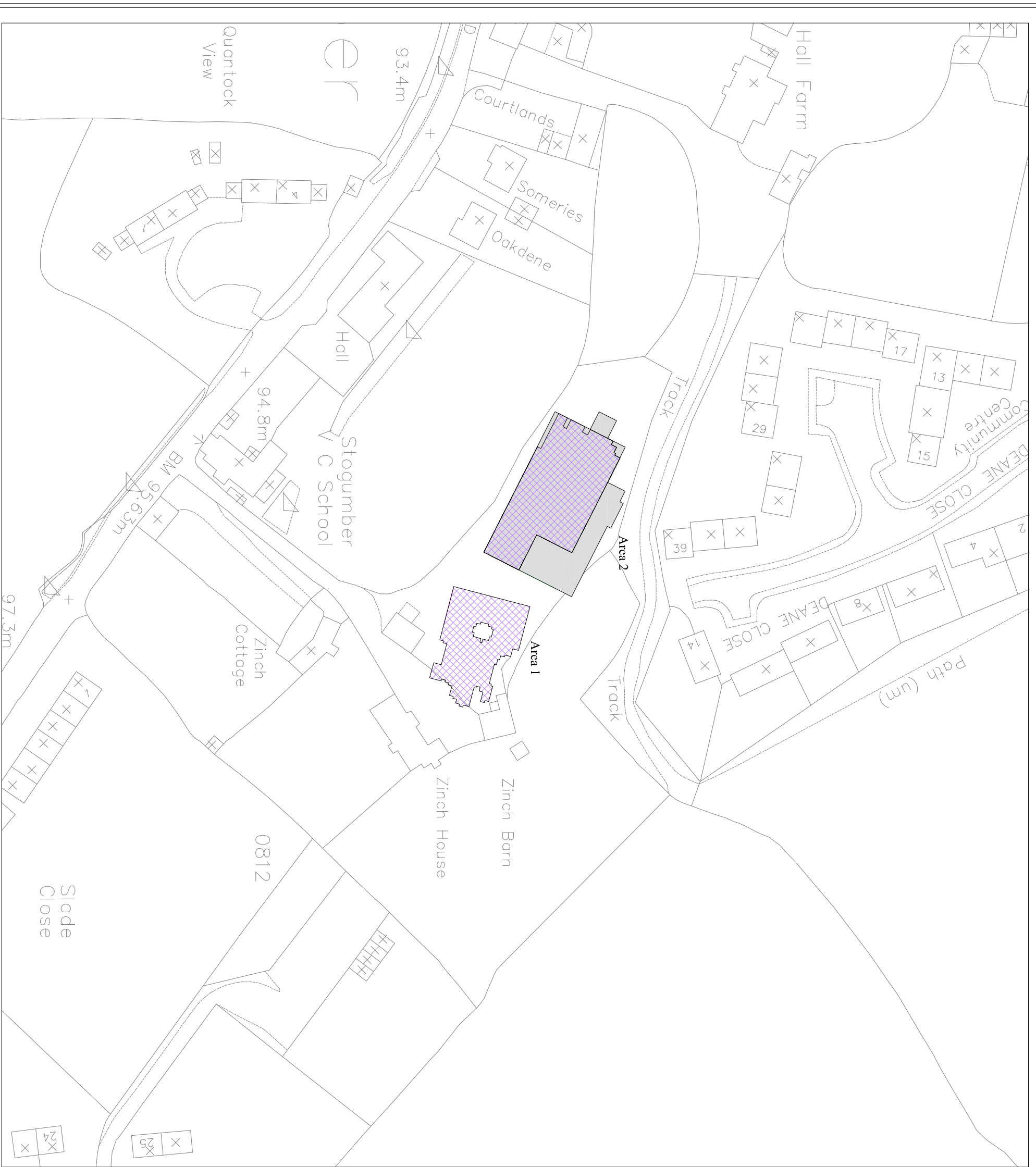


GSB PROSPECTION Ltd

PROJECT: 2003/50 Stogumber

TITLE: Location Diagram

Reproduced from the Ordnance Survey Map with the permission of the Controller of HMSO © Crown Copyright (AL100018065)



Gradiometer Survey

Resistance Survey

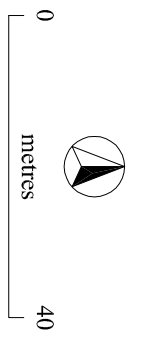


Figure 1

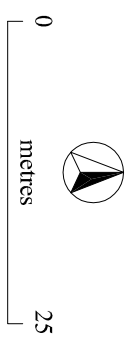
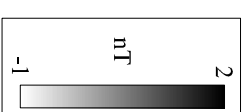
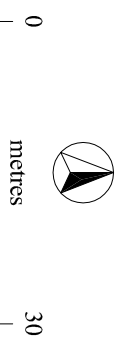


Figure 2



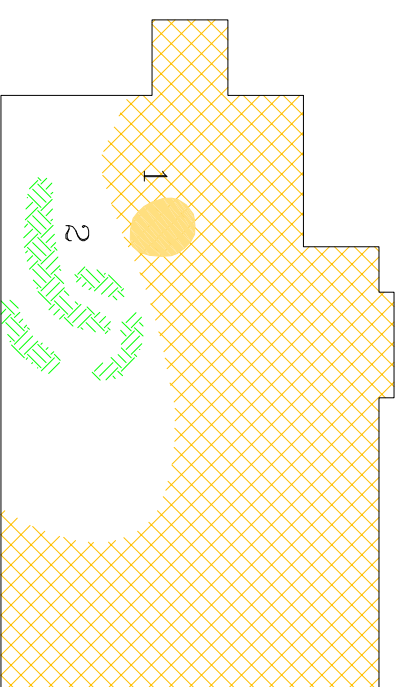
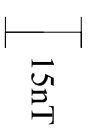
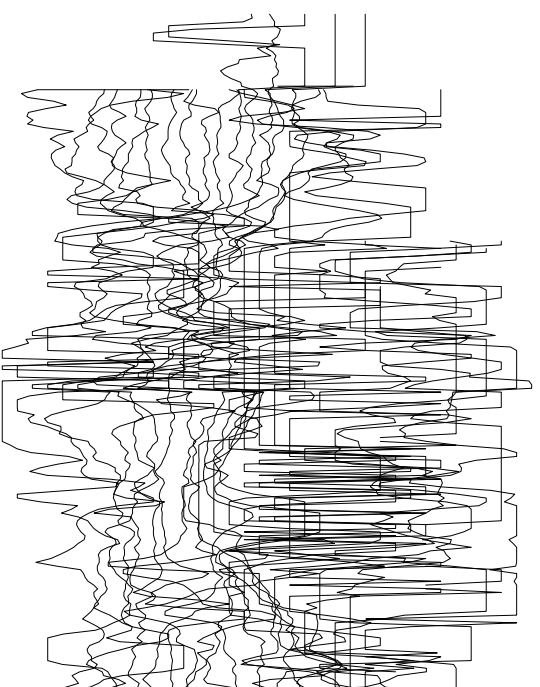
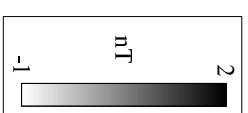
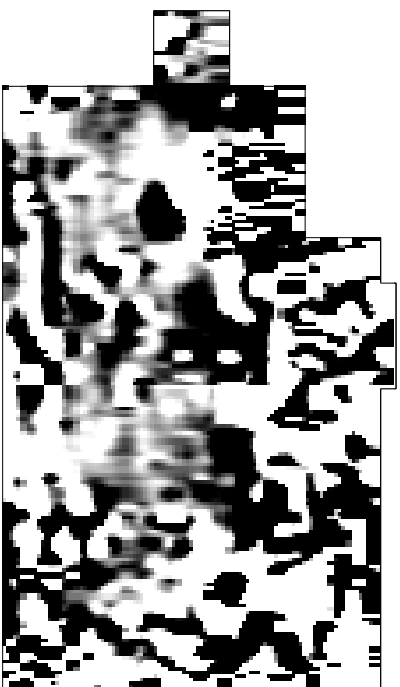
- | | | | | | |
|--|-----------------|--|-----------------|--|-------------------------|
| | High Resistance | | High Resistance | | Area of High Resistance |
| | ? Archaeology | | ? Natural | | ? Modern |
| | Low Resistance | | Low Resistance | | Area of Low Resistance |
| | ? Archaeology | | ? Natural | | ? Modern |
| | Trend | | ? Modern | | Low resistance ? Pipe |



- | | | | | | |
|--|-----------|--|------------------------------|--|---------|
| | ? Natural | | Area of Magnetic Disturbance | | Ferrous |
|--|-----------|--|------------------------------|--|---------|

Figure 3

STOGUMBER Gradiometer Data



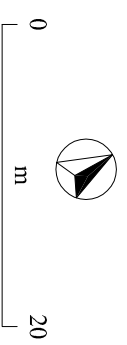
? Natural



Area of Magnetic Disturbance



Ferrous



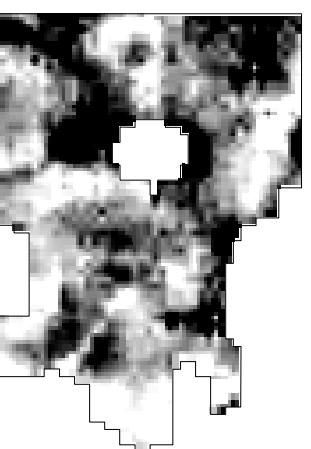
STOGUMBER Resistance Data

Area 1

Raw Data

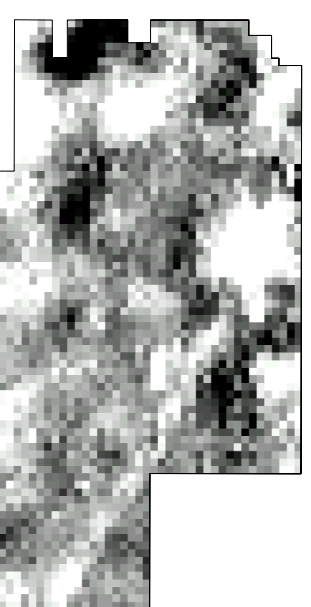


Processed Data



Area 2

Raw Data



Processed Data

