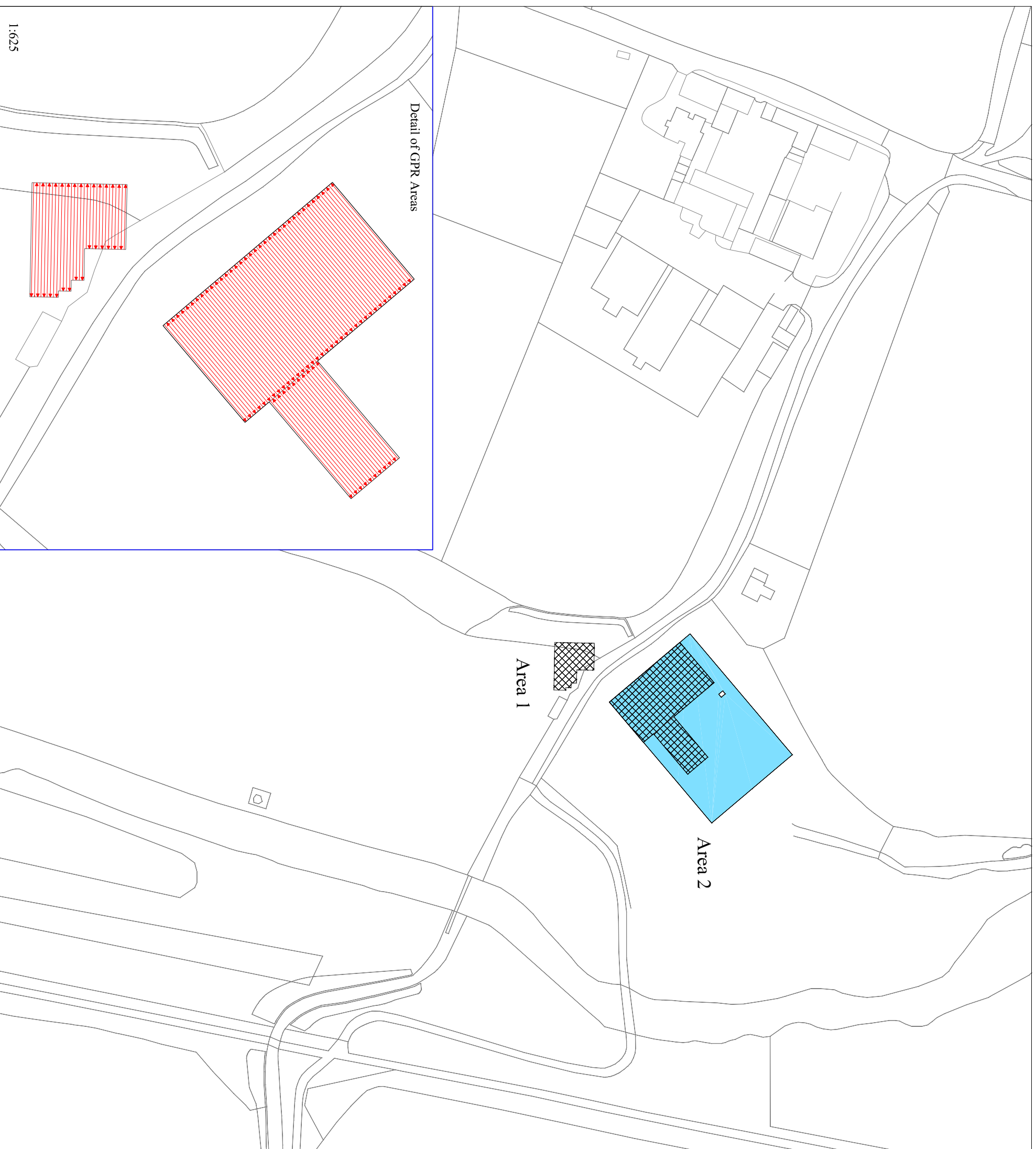


**GSB PROSPECTION Ltd.**

**PROJECT:** 2006/54 Dotton Mill, Devon

**TITLE:** Location of Survey Areas

Reproduced from the Ordnance Survey Map supplied by Time Team with the permission of the Controller of HMSO © Crown Copyright (AL100018665)



Area 1

Area 2

Detail of GPR Areas

1:625

Resistance Survey

GPR Survey

Direction of GPR Traverses

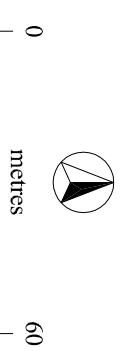
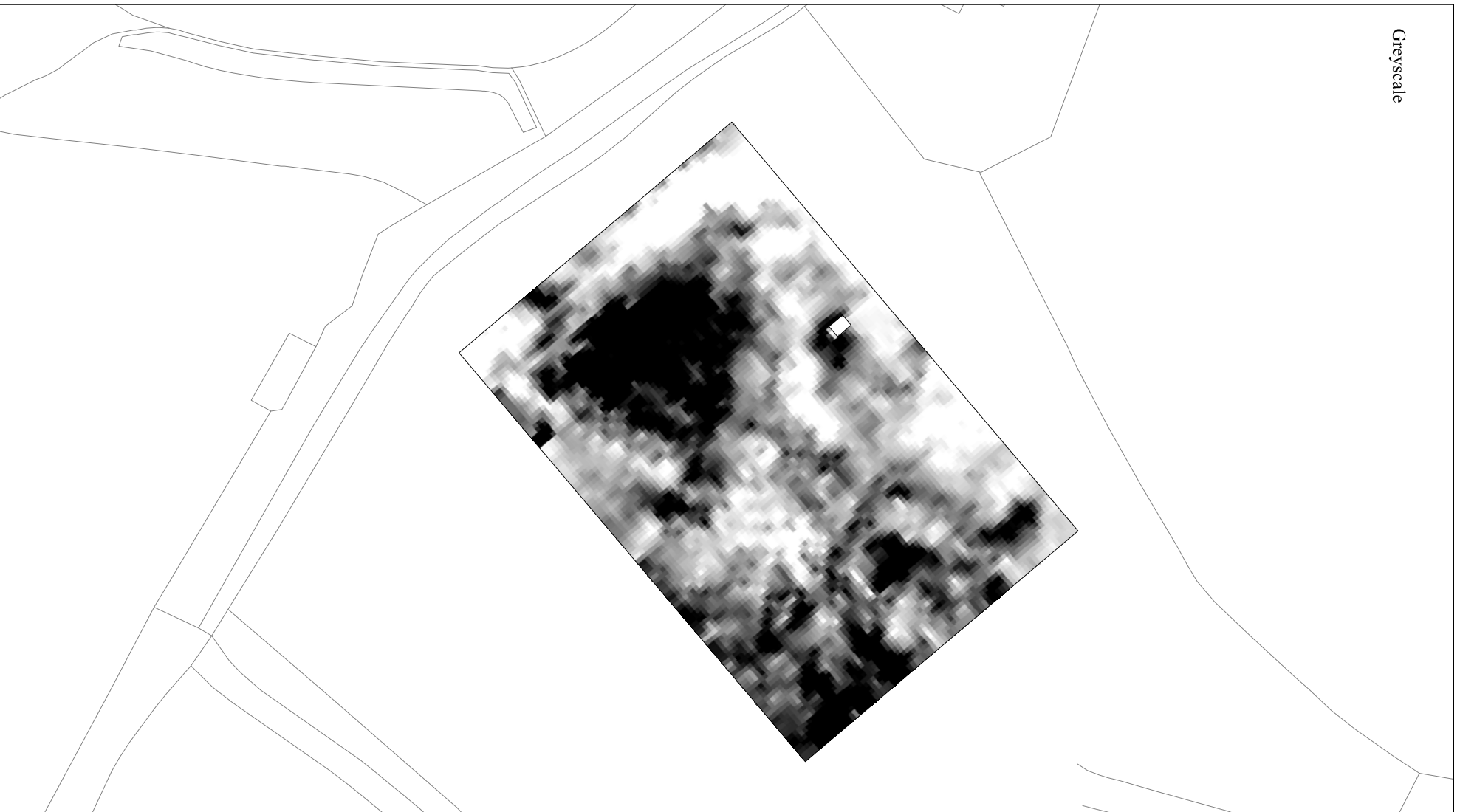
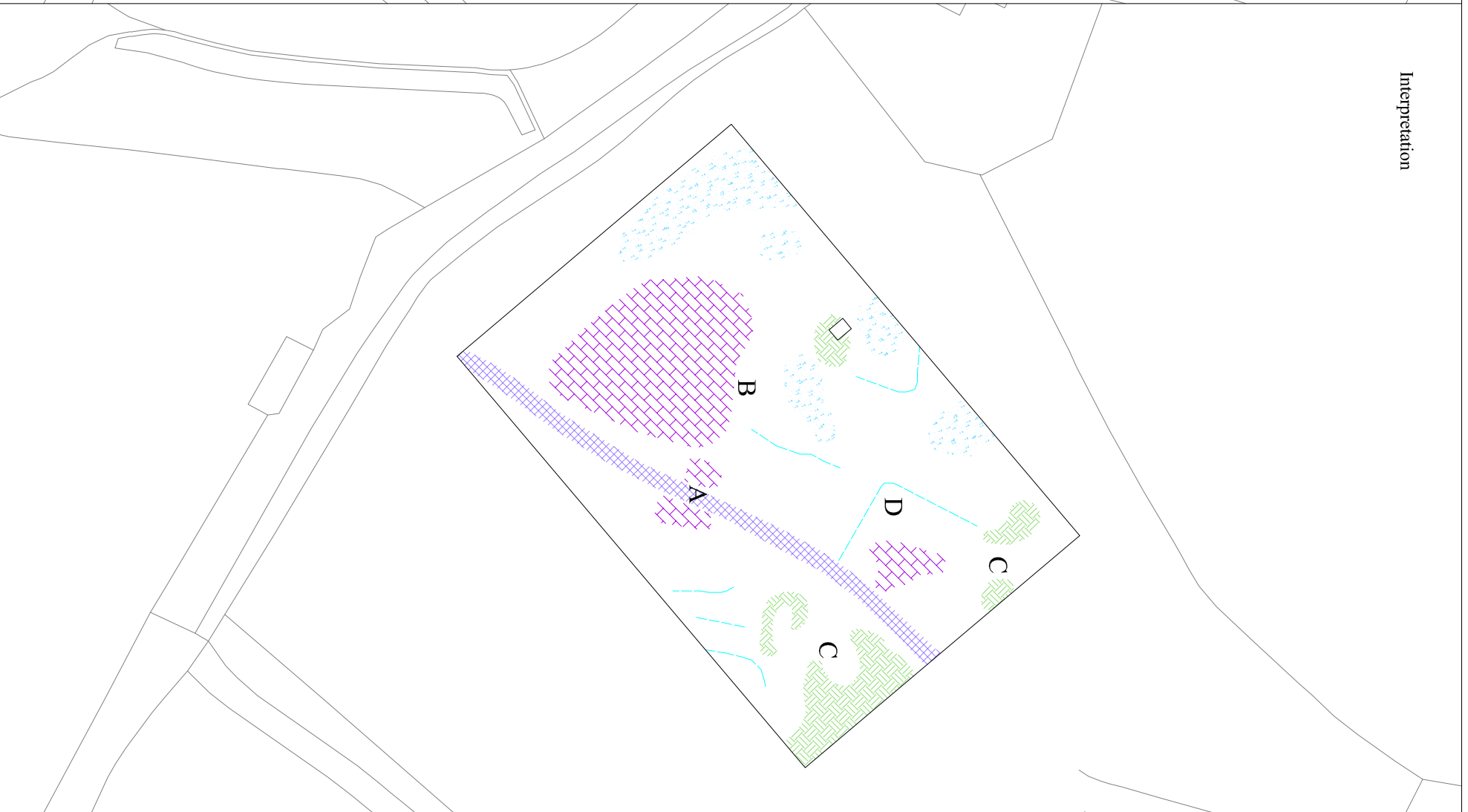


Figure 1

Greyscale



Interpretation

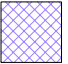
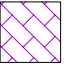
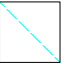

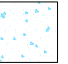


**GSB PROSPECTION Ltd.**

PROJECT: 2006/54 Dotton Mill, Devon

TITLE: Summary Resistance Data

Reproduced from the Ordnance Survey Map with the permission of the Controller of HMSO © Crown Copyright (A.L.100018065)

-  Low Resistance - Leat
-  High resistance - Building/Rubble Spread
-  High Resistance - Trend
-  High Resistance - Topography/Landscaping
-  Low Resistance - Landscaping

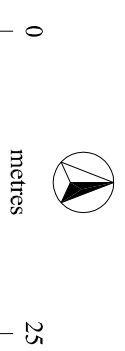
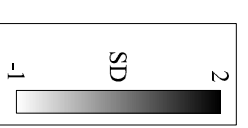
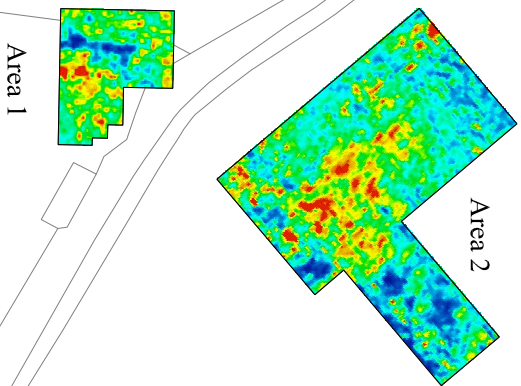
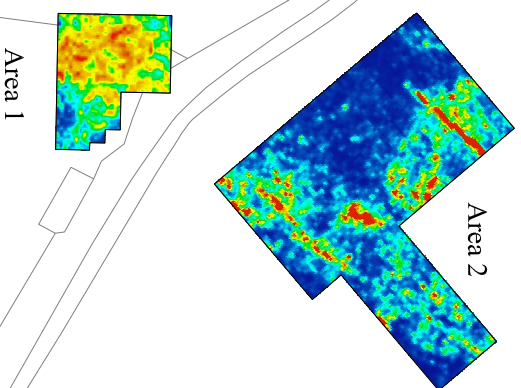


Figure 2

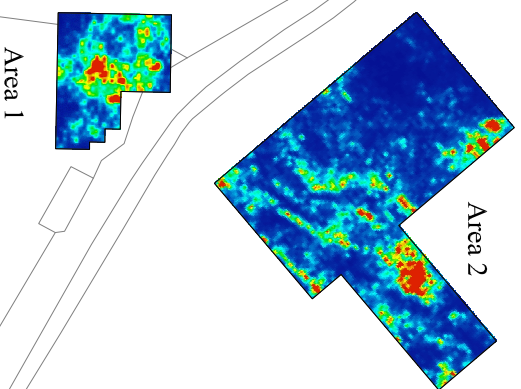
0.00-0.50m



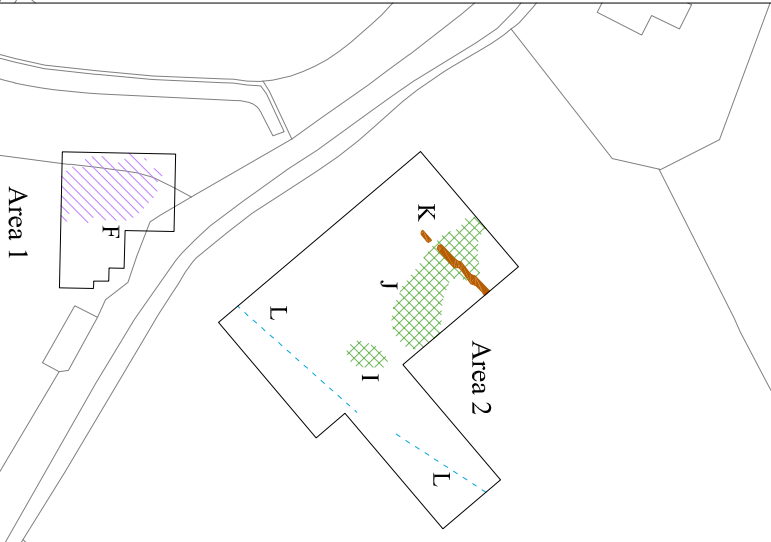
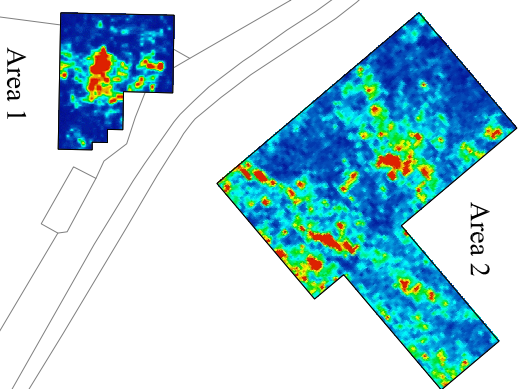
0.50-1.00m



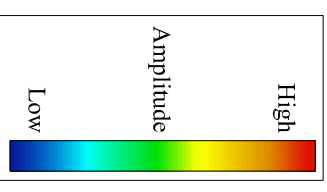
1.00-1.50m



1.50-2.00m



**GSB PROSPECTION Ltd.**  
 PROJECT: 2006/54 Dotton Mill, Devon  
 TITLE: Summary GPR Data  
 Reproduced from the Ordnance Survey Map supplied by Time Team with the permission of the Controller of HMSO © Crown Copyright (AL100018665)



- High Amplitude - Demolition in Wheel Pit
- High Amplitude - ?Rubble
- Increased Amplitude Zone
- Increased Amplitude - Demolition
- Low Amplitude - Beneath Floor Level
- Leat
- Increased Amplitude - ?Palaeo-surface
- Increased Amplitude - ?Leat Backfill/Base

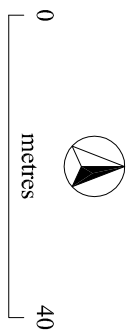
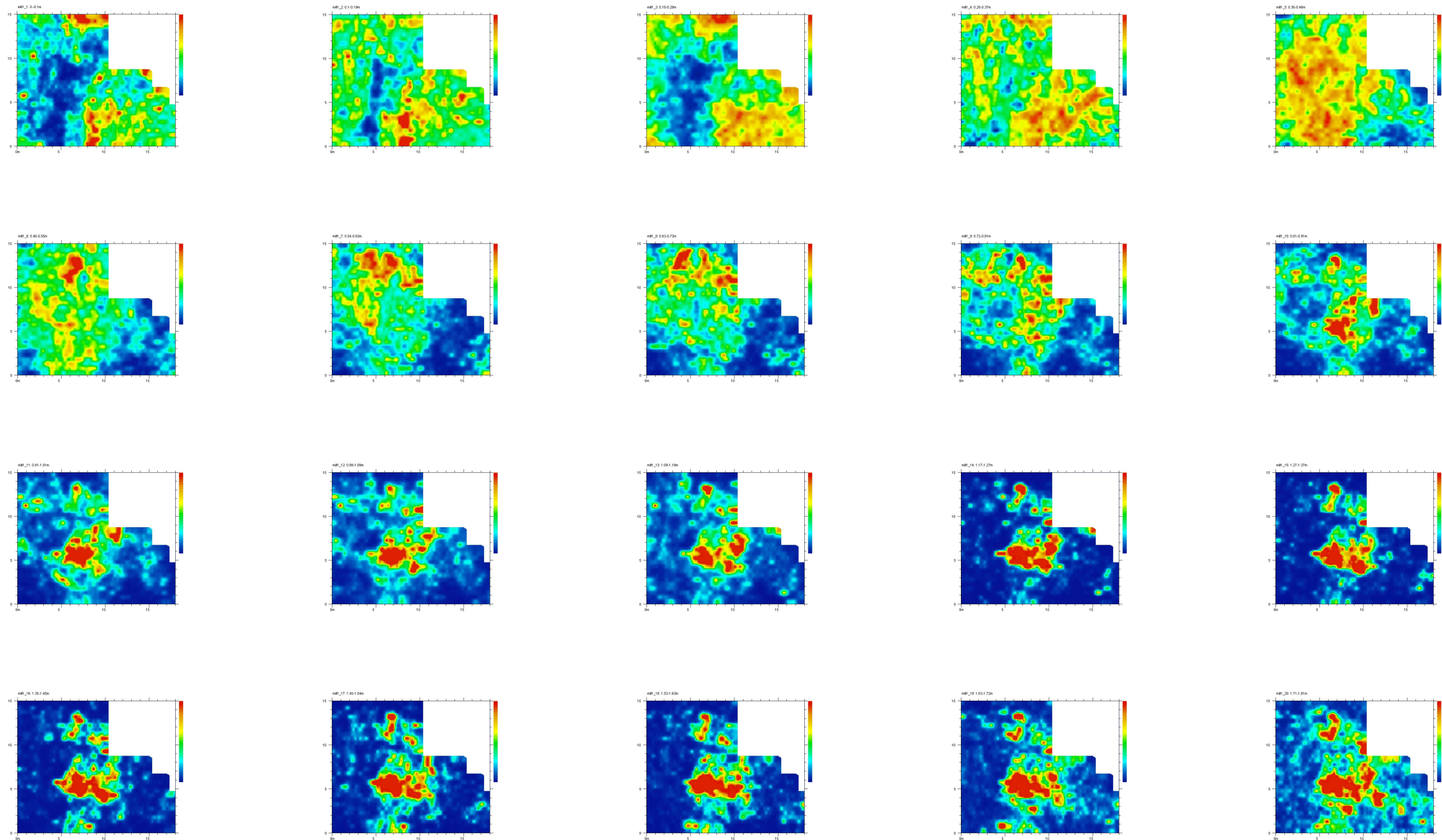
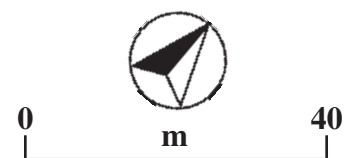
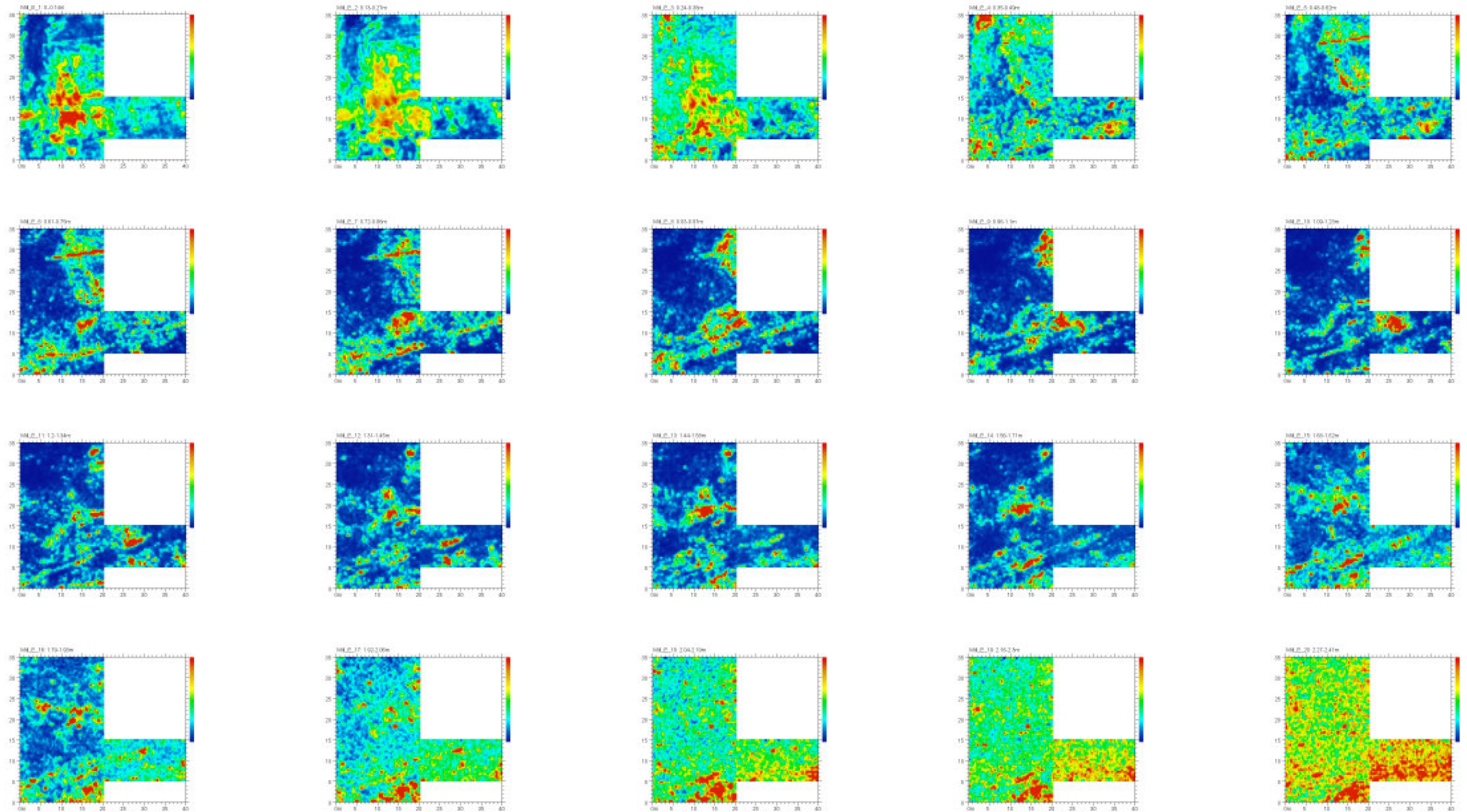


Figure 3

# Dotton Mill Area 1

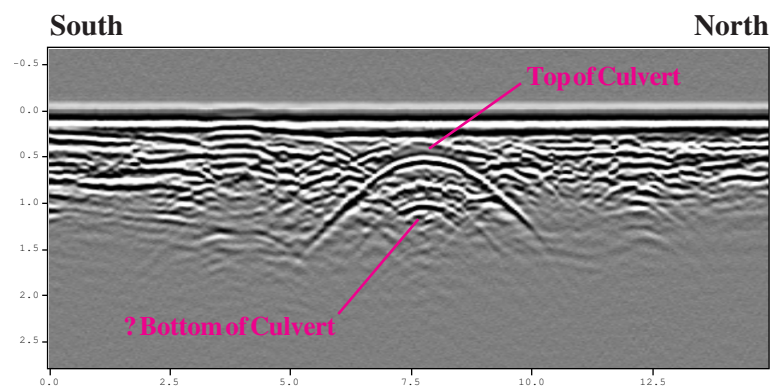


# Dotton Mill Area 2

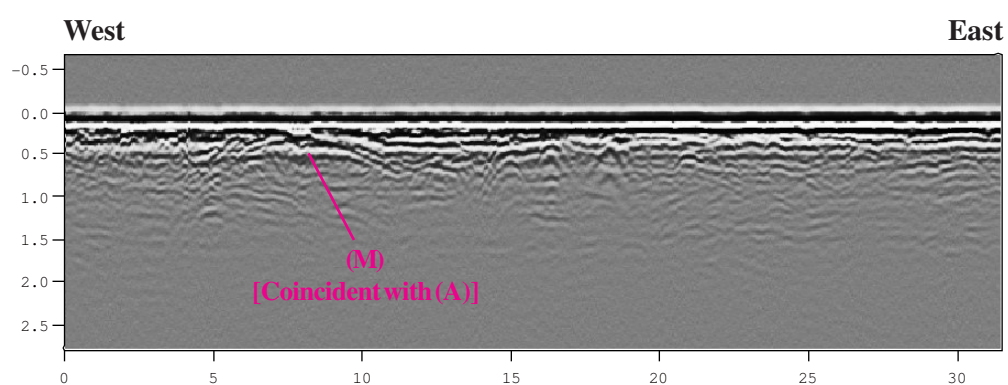


# DOTTON MILL Example Radargrams

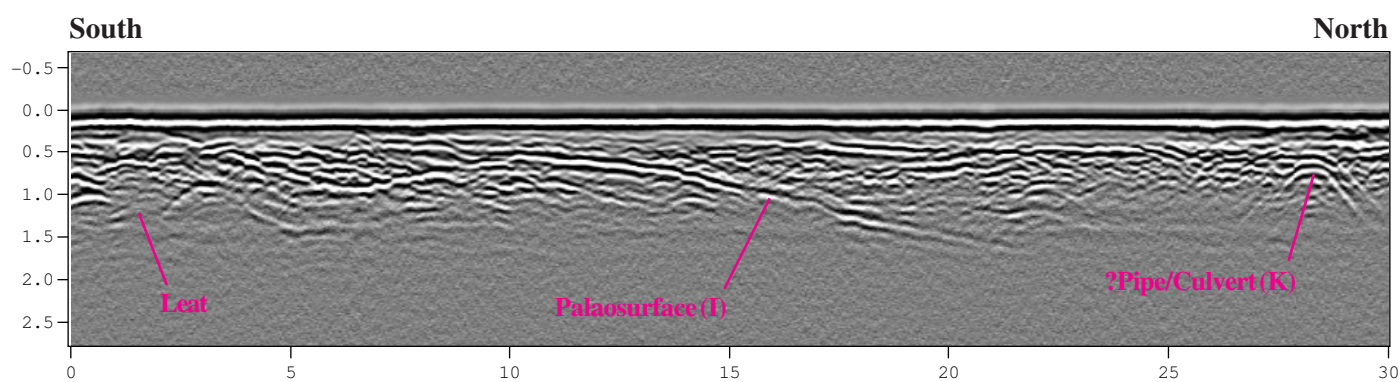
## Leat Beneath Road:



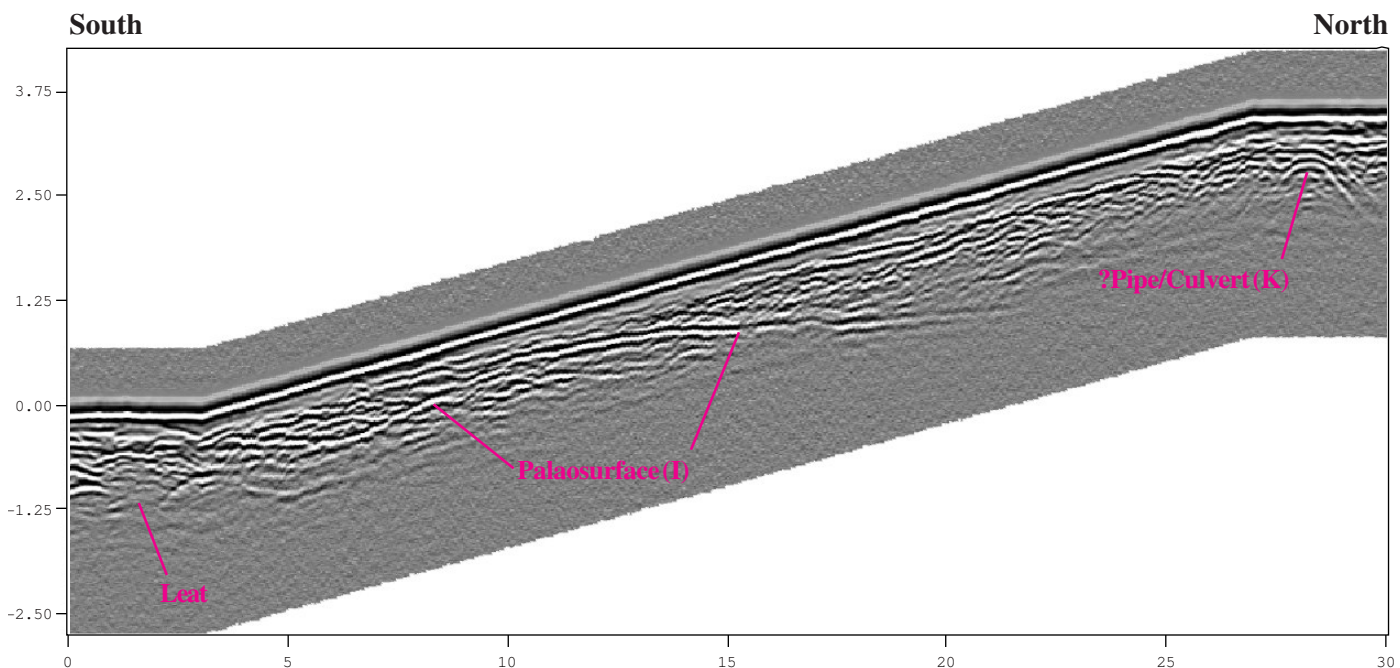
## AREA 2 - Along Leat, Over High Resistance Anomaly (A):



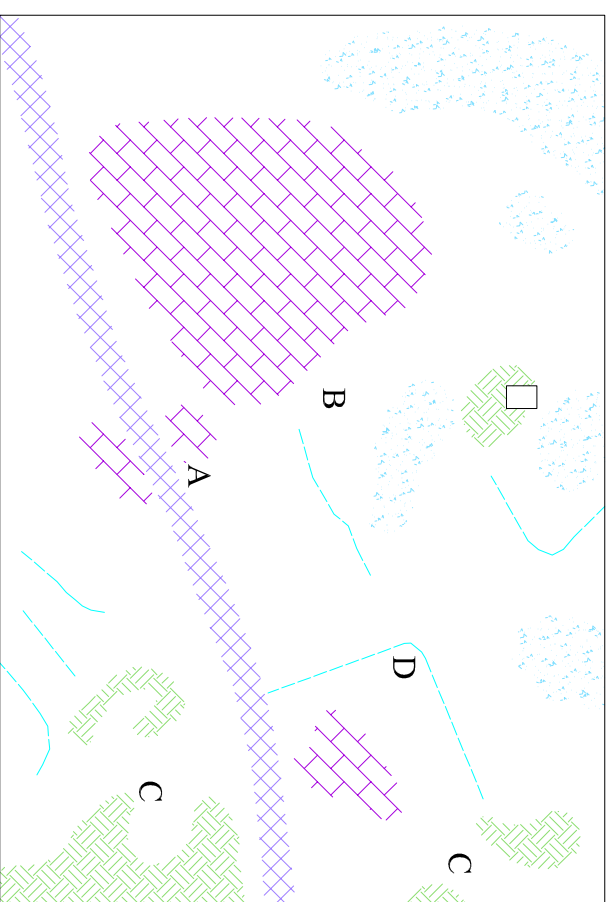
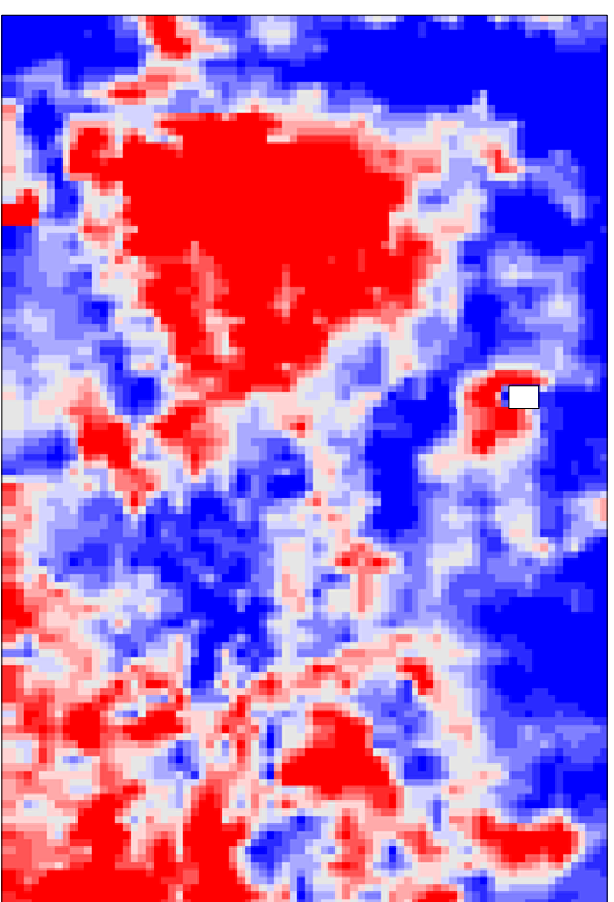
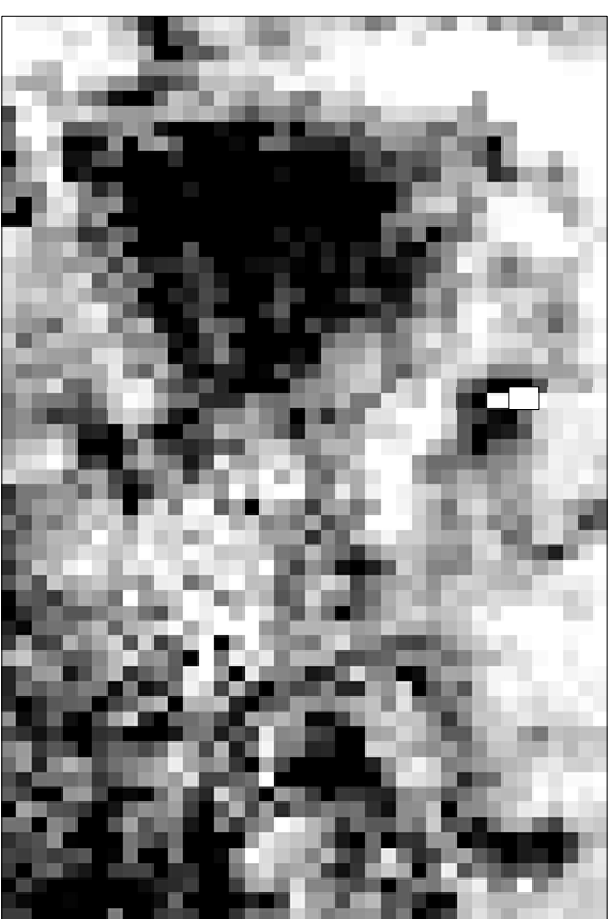
## AREA 2 - Uncorrected Radargram Adjacent to Trench x:

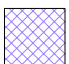
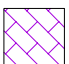


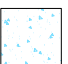


## AREA 2 - Schematically Corrected (for topography) Radargram Adjacent to Trench x:



# DOTTON MILL Resistance Data Area 2



-  Low Resistance - Leat
-  High resistance -  
?Building/Rubble Spread
-  High Resistance - Trend
-  High Resistance -  
?Topography/Landscaping
-  Low Resistance -  
Landscaping

