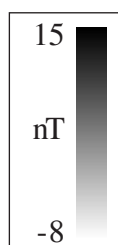
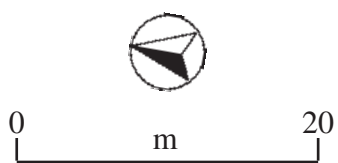
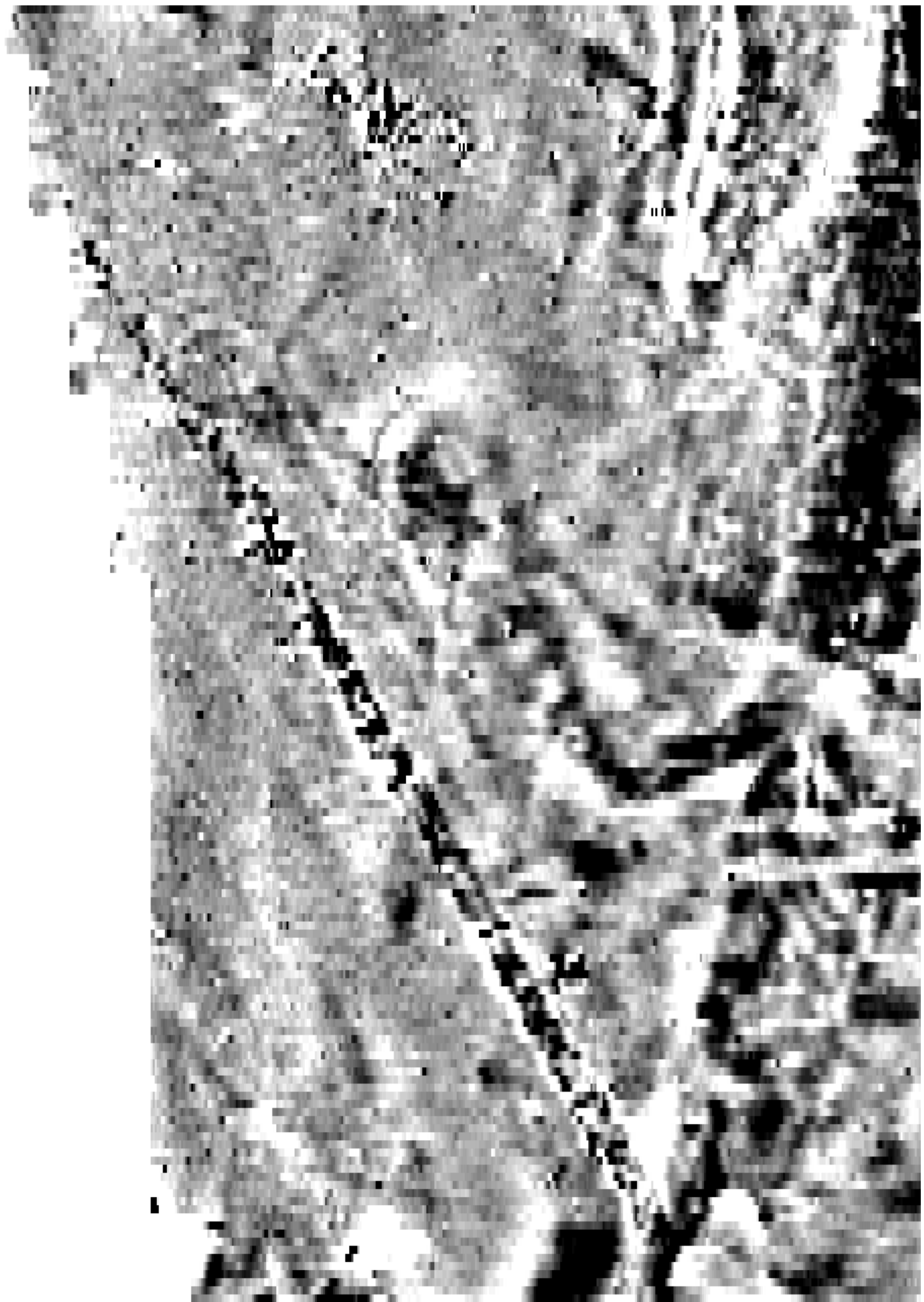
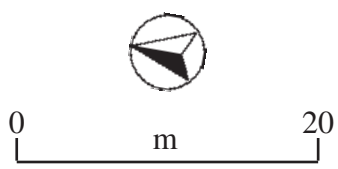
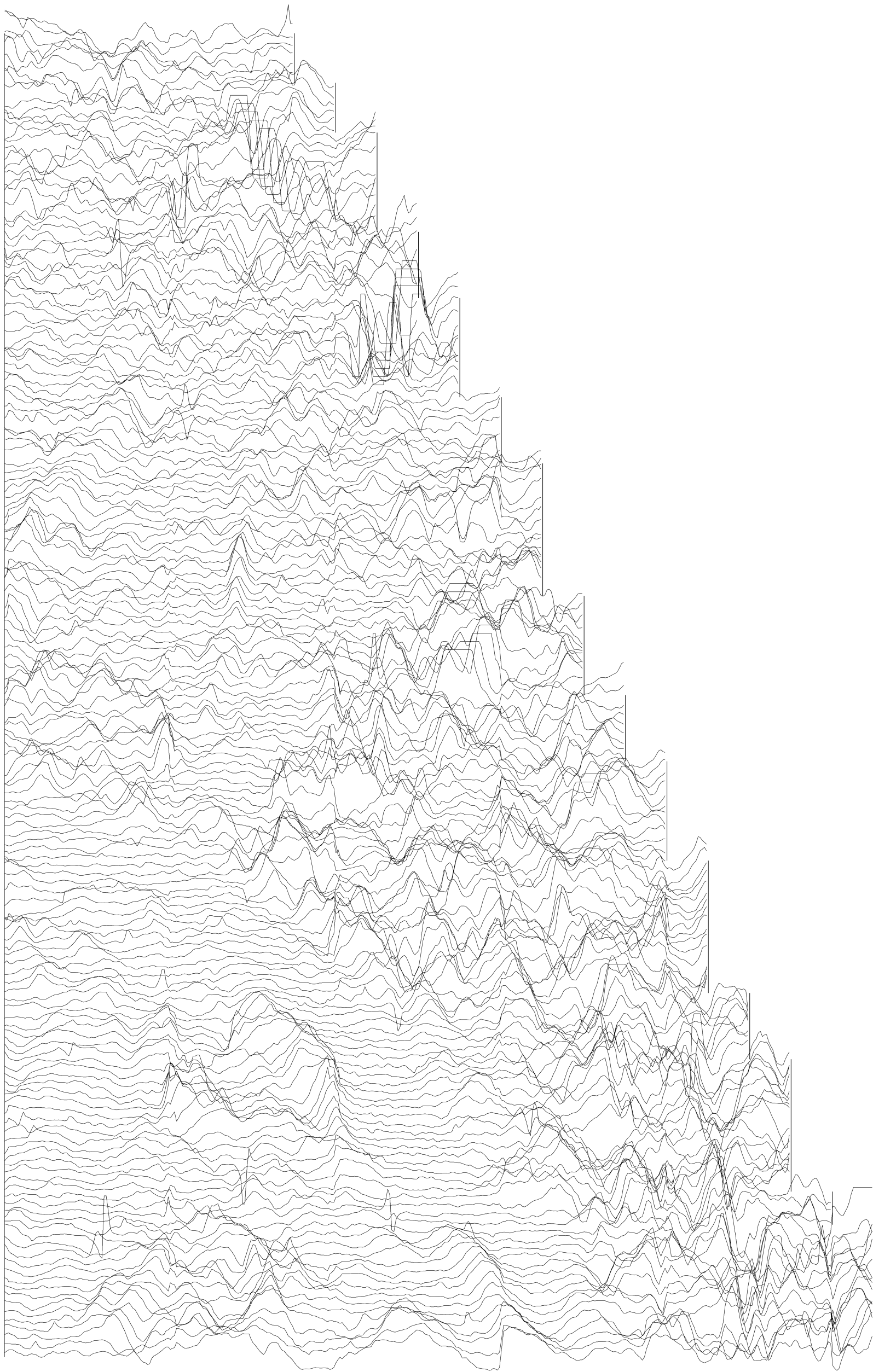


<b>GSB Prospection Ltd.</b>
2007/47 Antonine Wall III - Mumrills
Magnetic Data - Area 1A
<b>Figure M1</b>

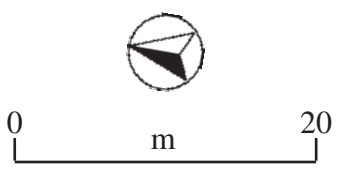
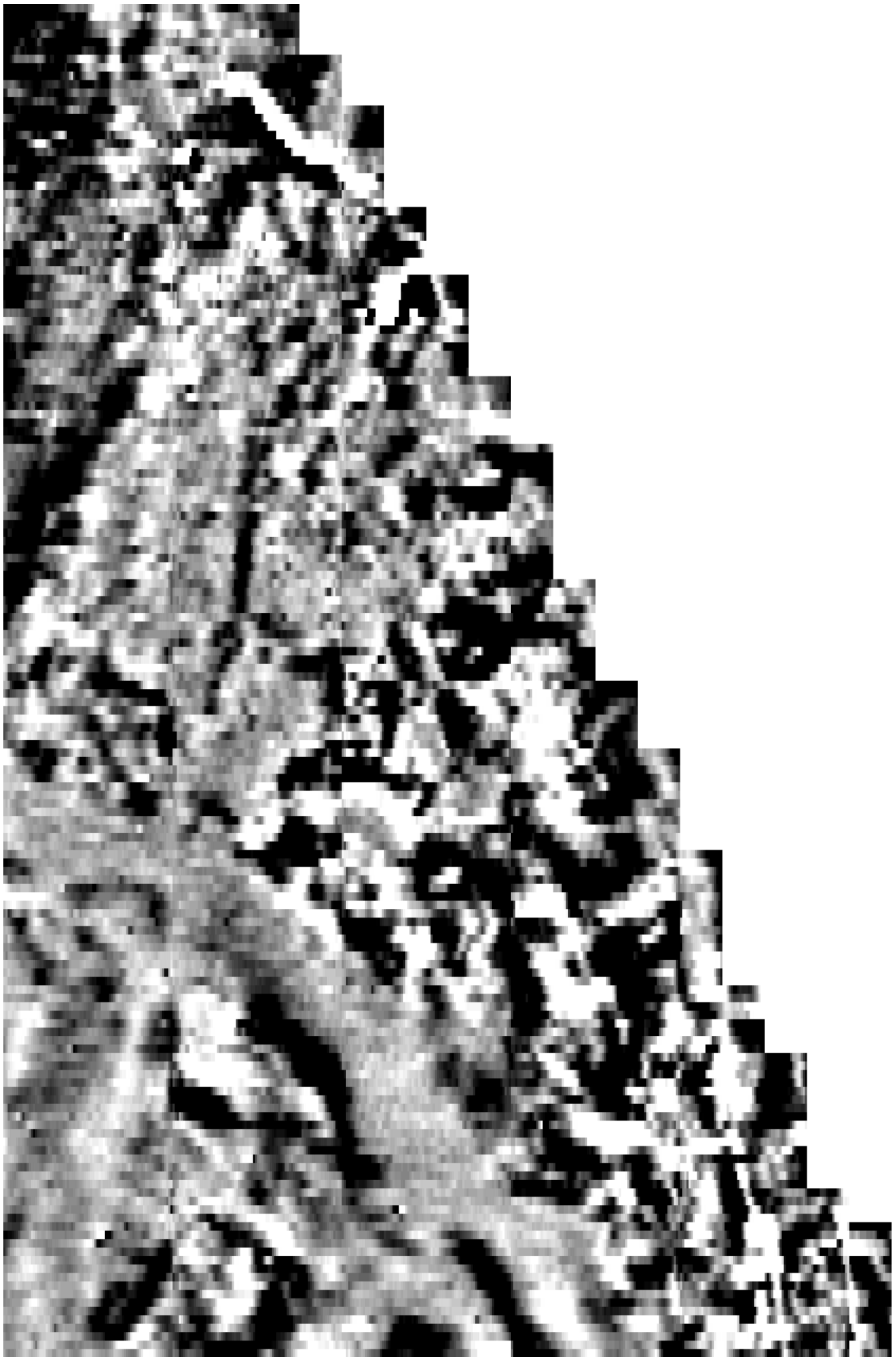


<b>GSB Prospection Ltd.</b>
2007/47 Antonine Wall III - Mumrills
Magnetic Data - Area 1A
<b>Figure M2</b>

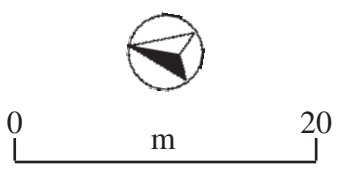
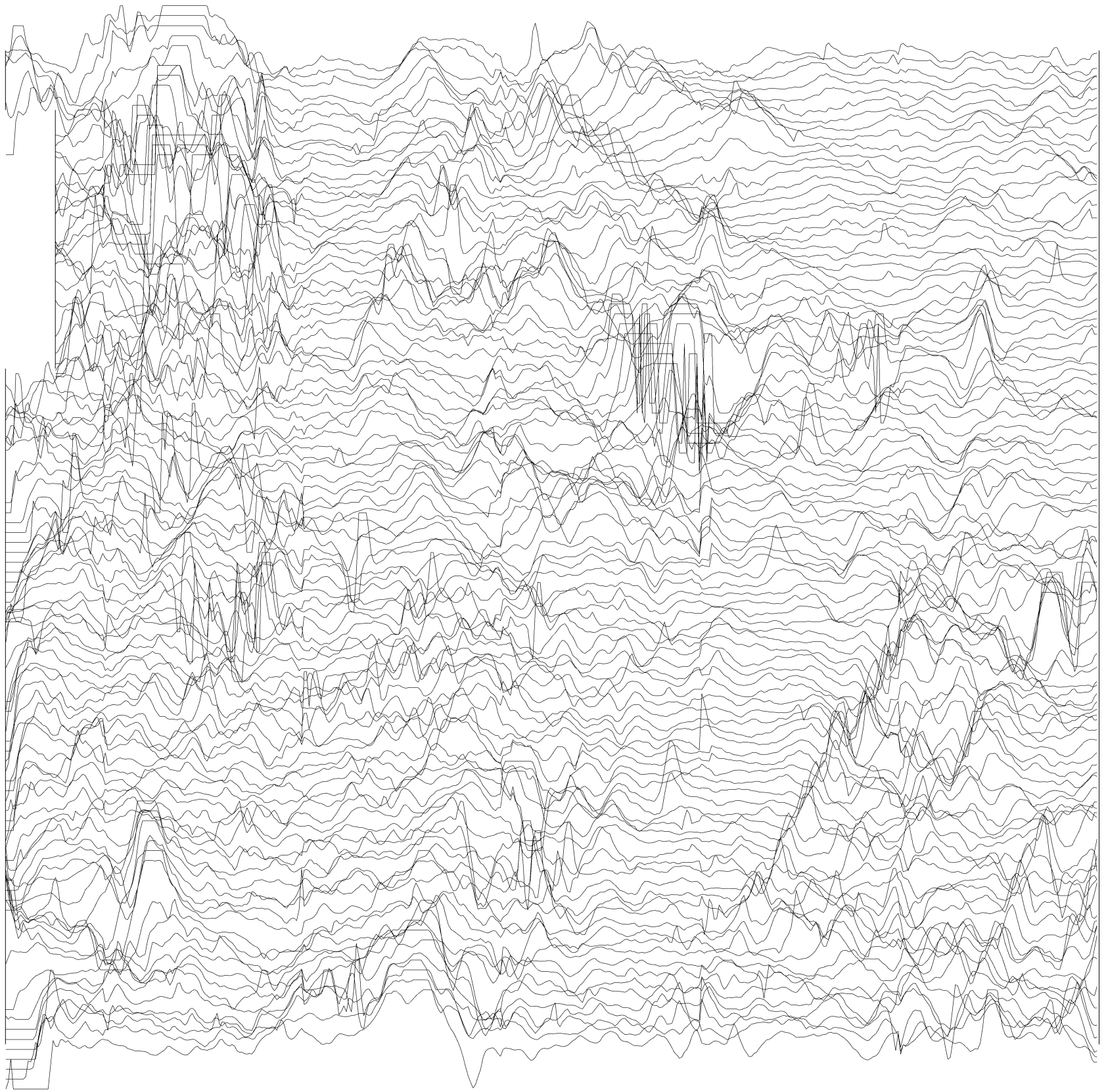


50nT

<b>GSB Prospection Ltd.</b>
2007/47 Antonine Wall III - Mumrills
Magnetic Data - Area 1B
<b>Figure M3</b>

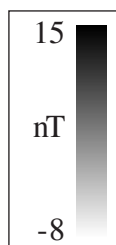
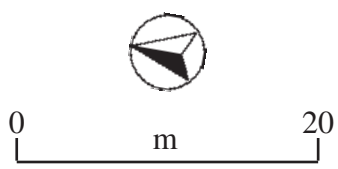
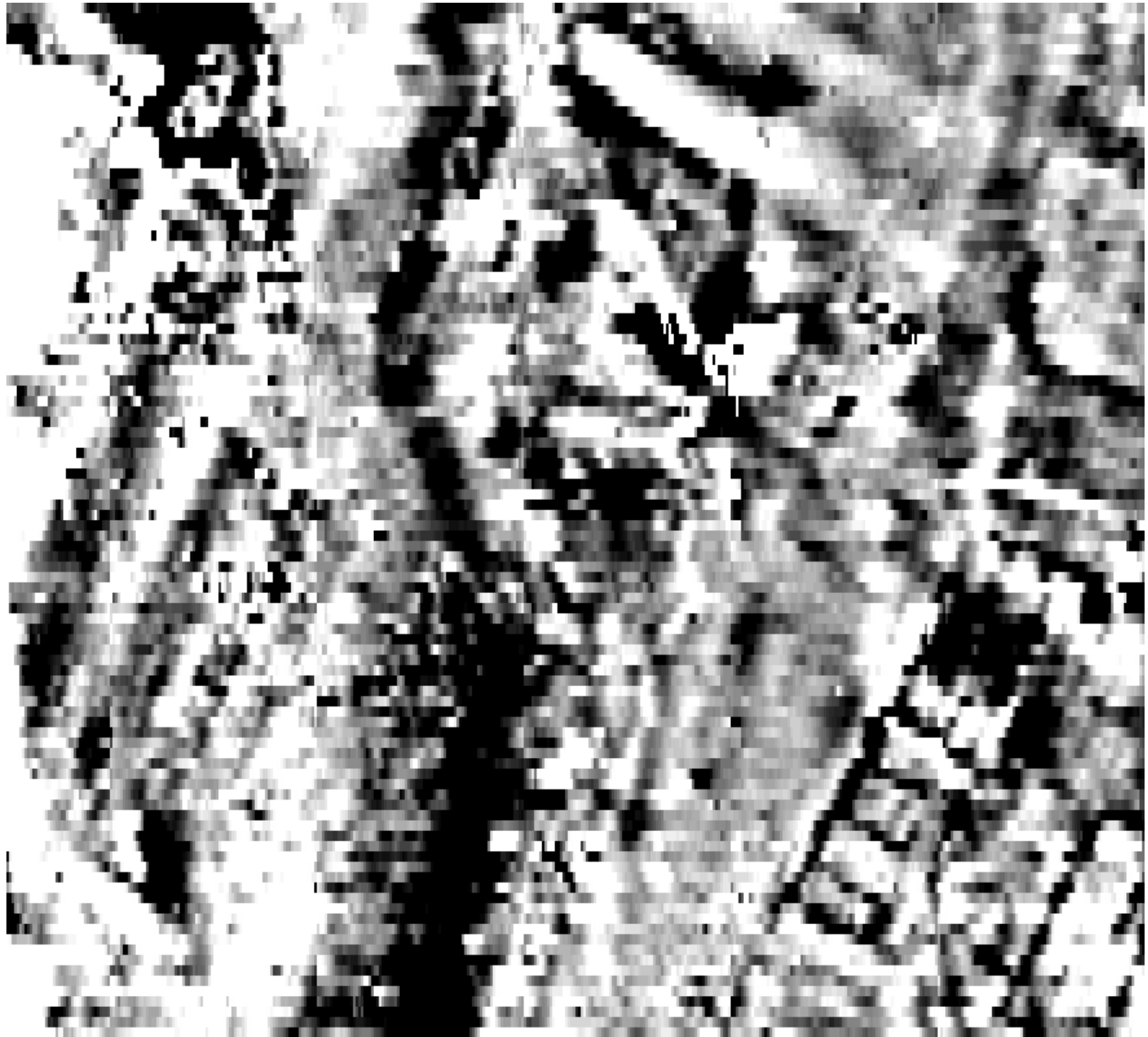


<b>GSB Prospection Ltd.</b>
2007/47 Antonine Wall III - Mumrills
Magnetic Data - Area 1B
<b>Figure M4</b>

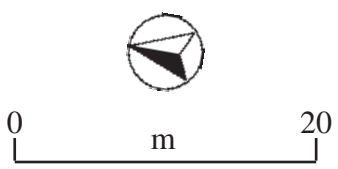
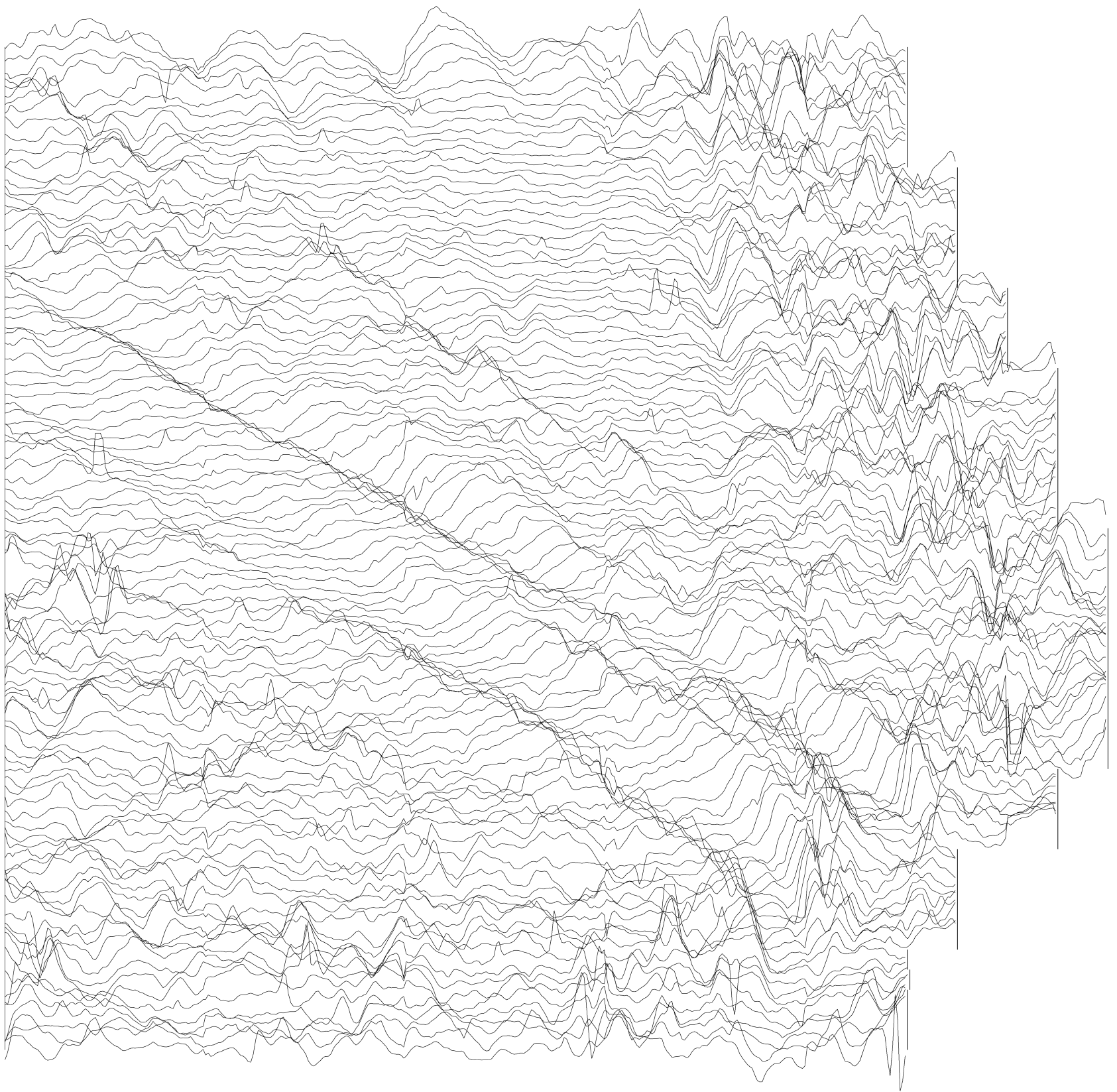


50nT

<b>GSB Prospection Ltd.</b>
2007/47 Antonine Wall III - Mumrills
Magnetic Data - Area 1C
<b>Figure M5</b>

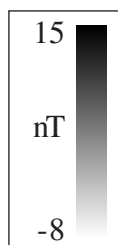
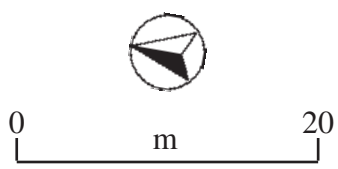
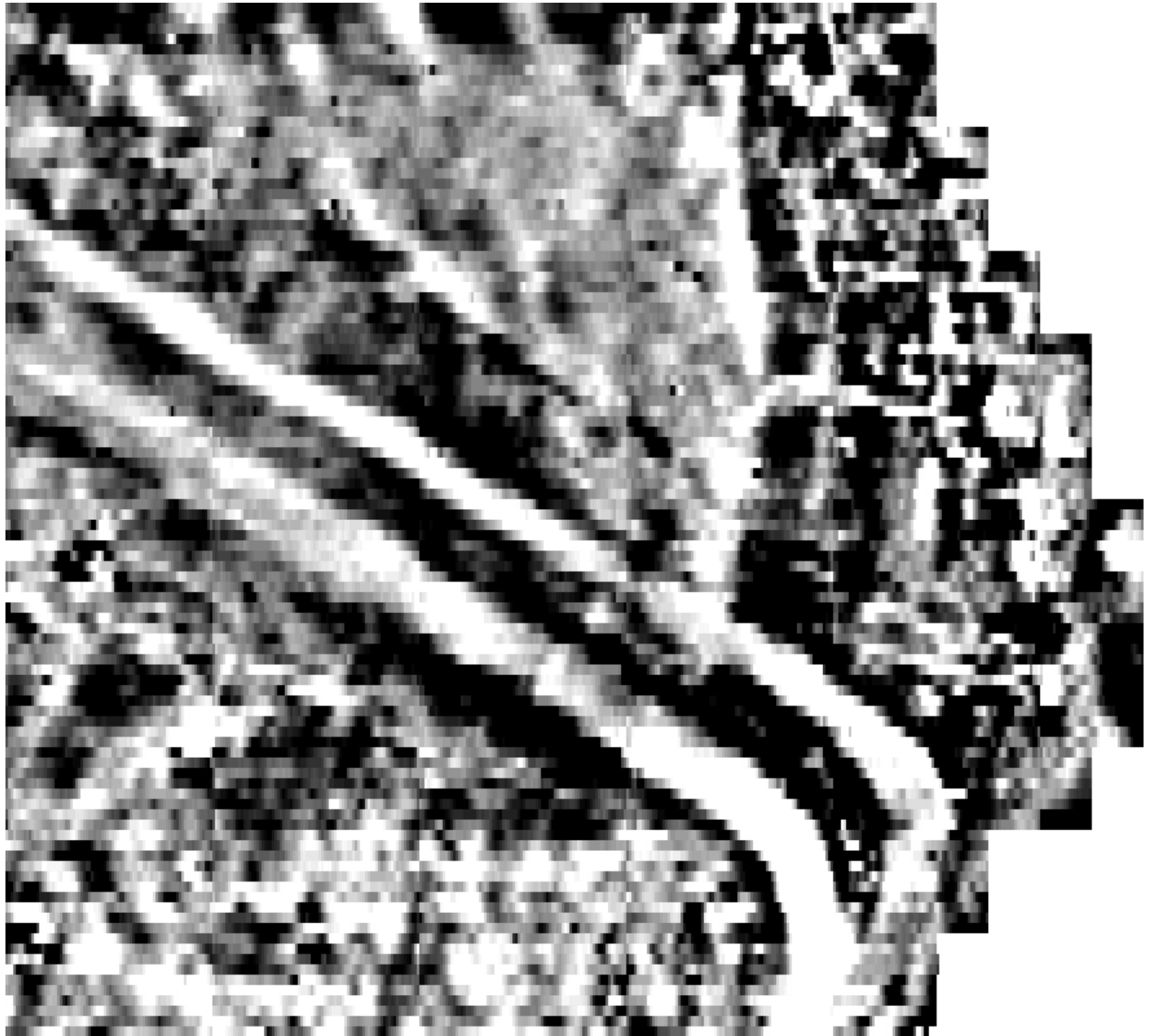


<b>GSB Prospection Ltd.</b>
2007/47 Antonine Wall III - Mumrills
Magnetic Data - Area 1C
<b>Figure M6</b>



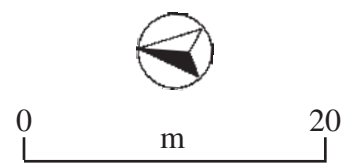
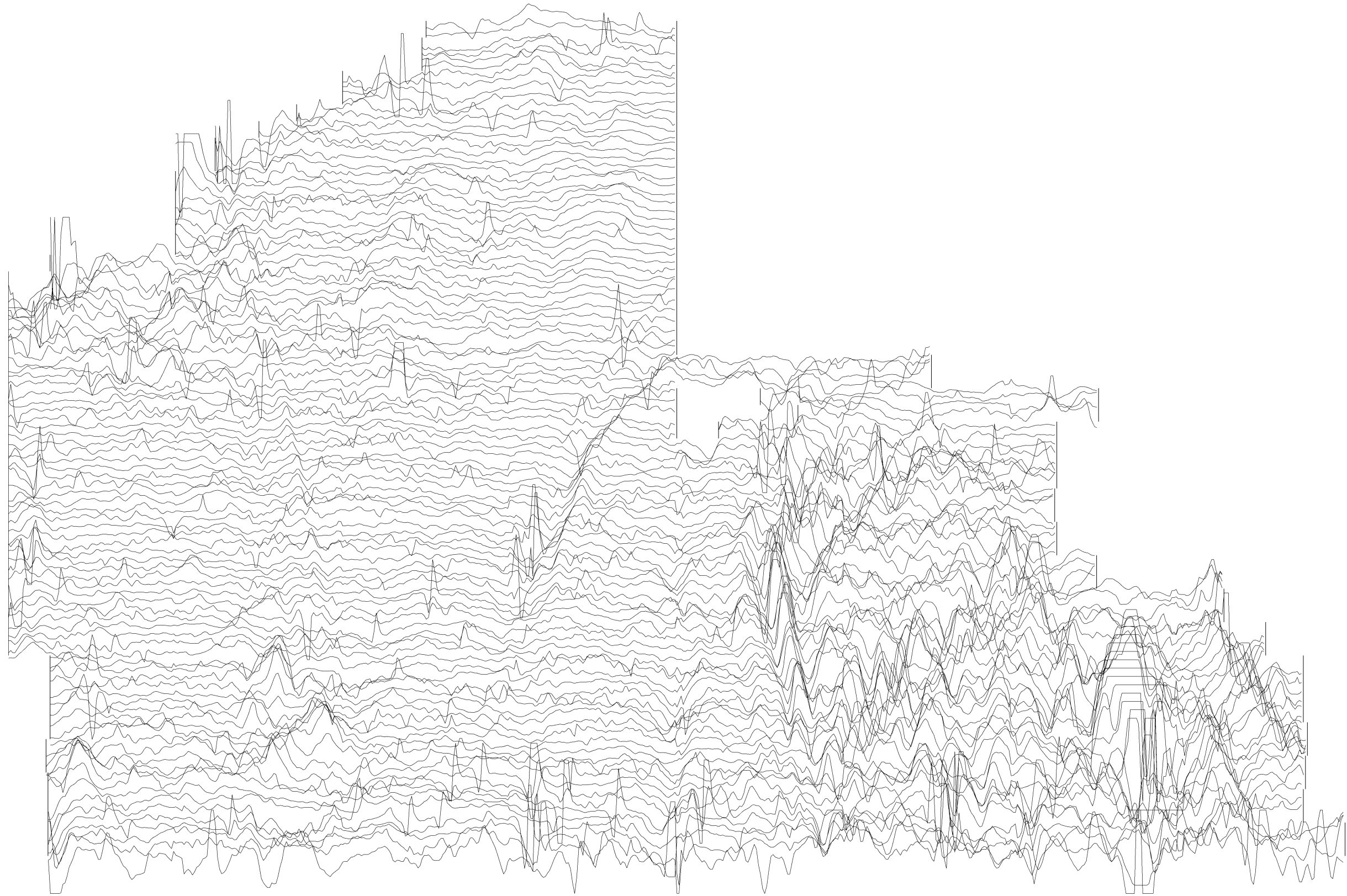
50 nT

<b>GSB Prospection Ltd.</b>
2007/47 Antonine Wall III - Mumrills
Magnetic Data - Area 1D
<b>Figure M7</b>



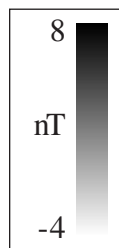
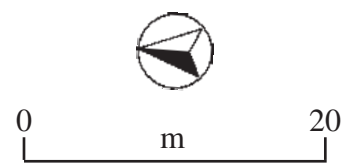
<b>GSB Prospection Ltd.</b>
2007/47 Antonine Wall III - Mumrills
Magnetic Data - Area 1D
<b>Figure M8</b>



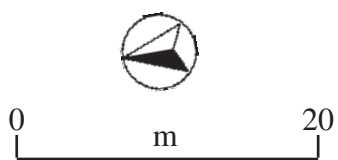
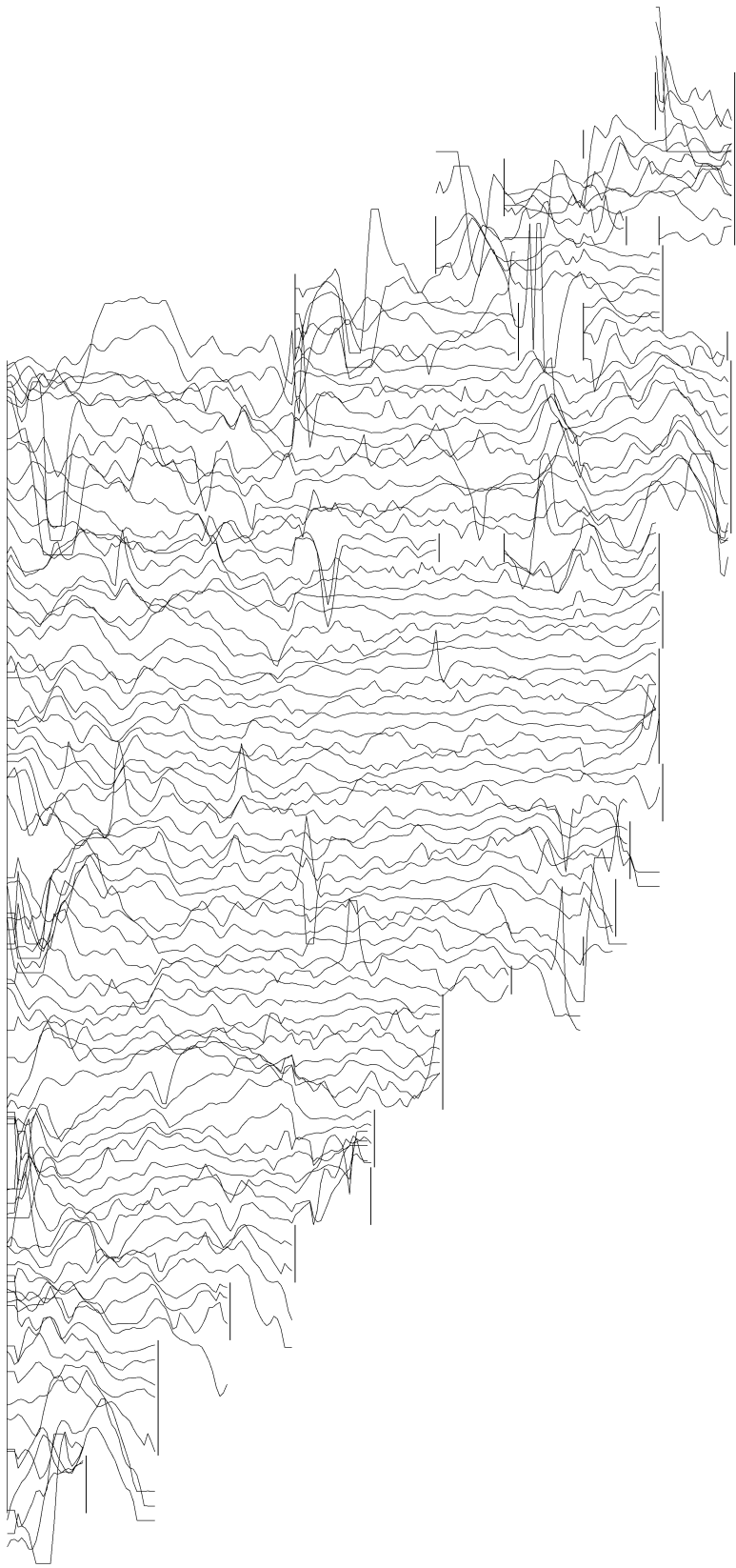


30nT

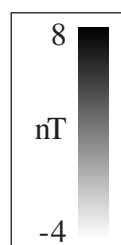
<b>GSB Prospection Ltd.</b>
2007/47 Antonine Wall III - Mumrills
Magnetic Data - Area 2
<b>Figure M9</b>



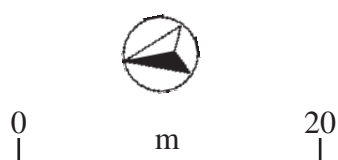
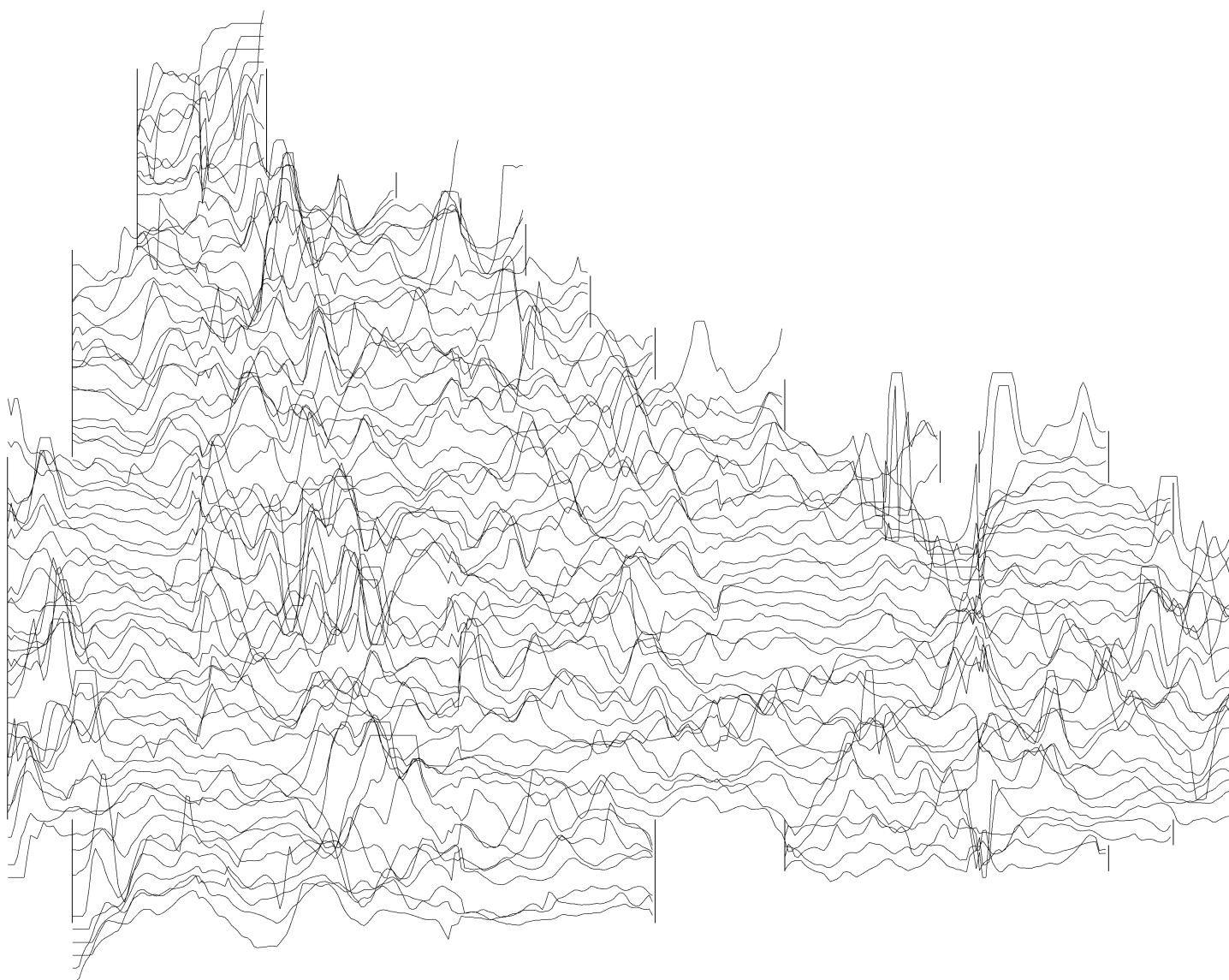
<b>GSB Prospection Ltd.</b>
2007/47 Antonine Wall III - Mumrills
Magnetic Data - Area 2
<b>Figure M10</b>



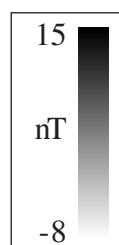
30 nT



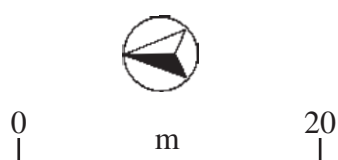
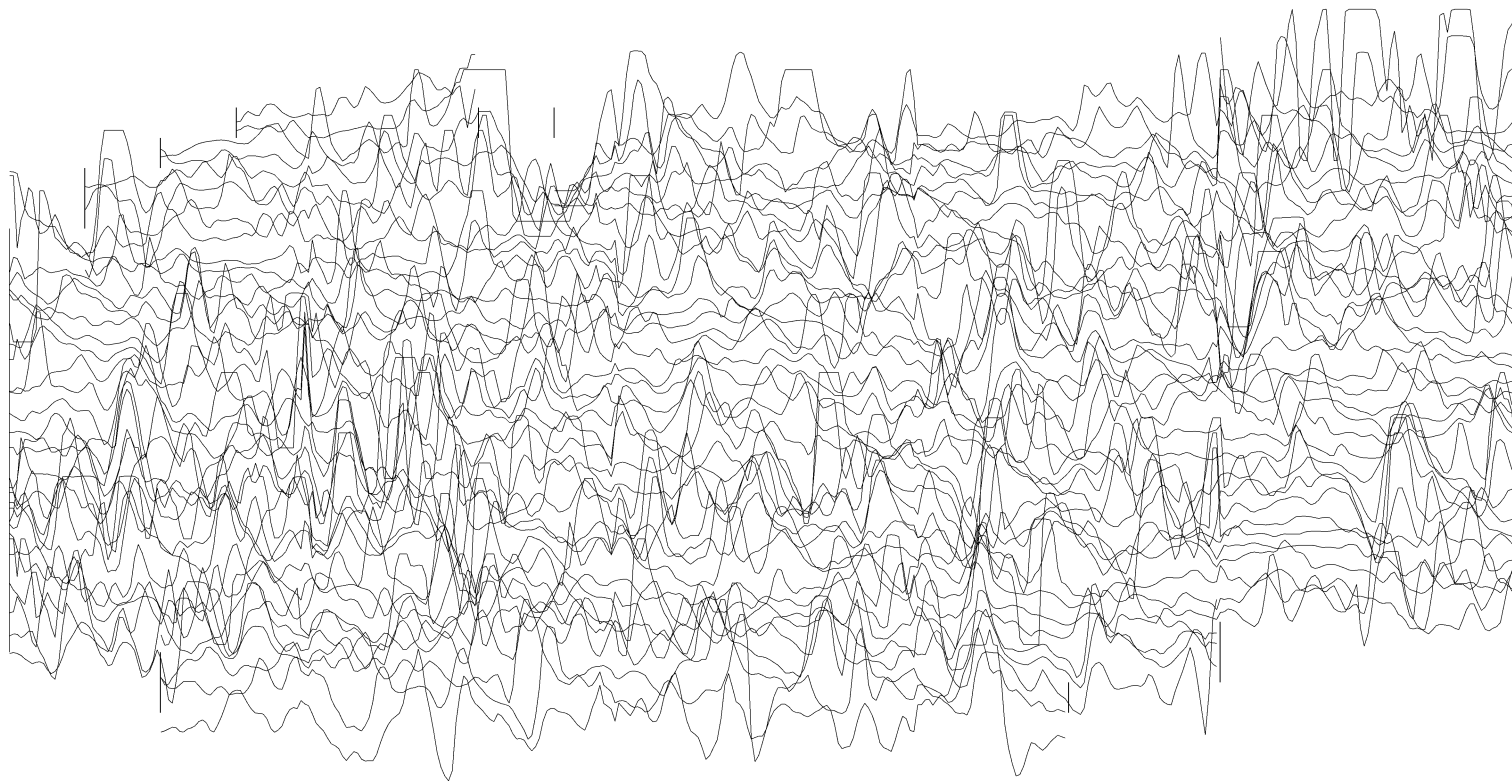
<b>GSB Prospection Ltd.</b>
2007/47 Antonine Wall III - Mumrills
Magnetic Data - Area 3
<b>Figure M11</b>



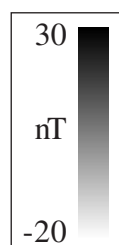
50 nT



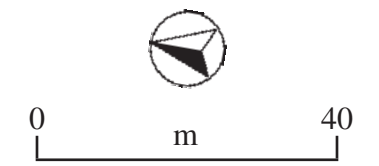
<b>GSB Prospection Ltd.</b>
2007/47 Antonine Wall III - Mumrills
Magnetic Data - Area 4
<b>Figure M12</b>



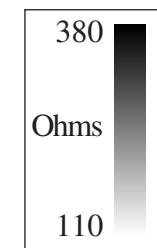
100 nT



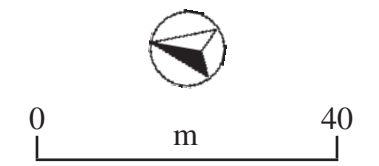
<b>GSB Prospection Ltd.</b>
2007/47 Antonine Wall III - Mumrills
Magnetic Data - Area 5
<b>Figure M13</b>



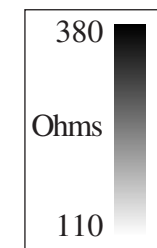
**Raw Data**



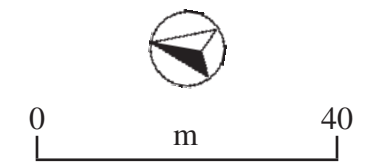
<b>GSB Prospection Ltd.</b>
2007/47 Antonine Wall III - Mumrills
Resistance Data - Area 1
<b>Figure R1</b>



**Interpolated Data**



<b>GSB Prospection Ltd.</b>
2007/47 Antonine Wall III - Mumrills
Resistance Data - Area 1
<b>Figure R2</b>

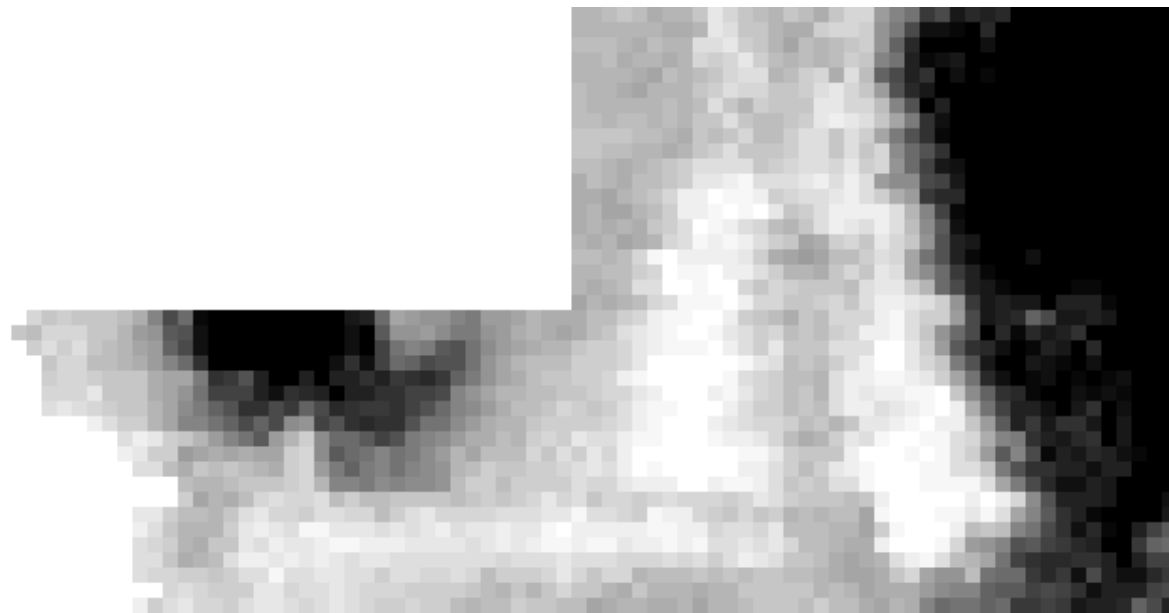


**High Pass Filtered Data**

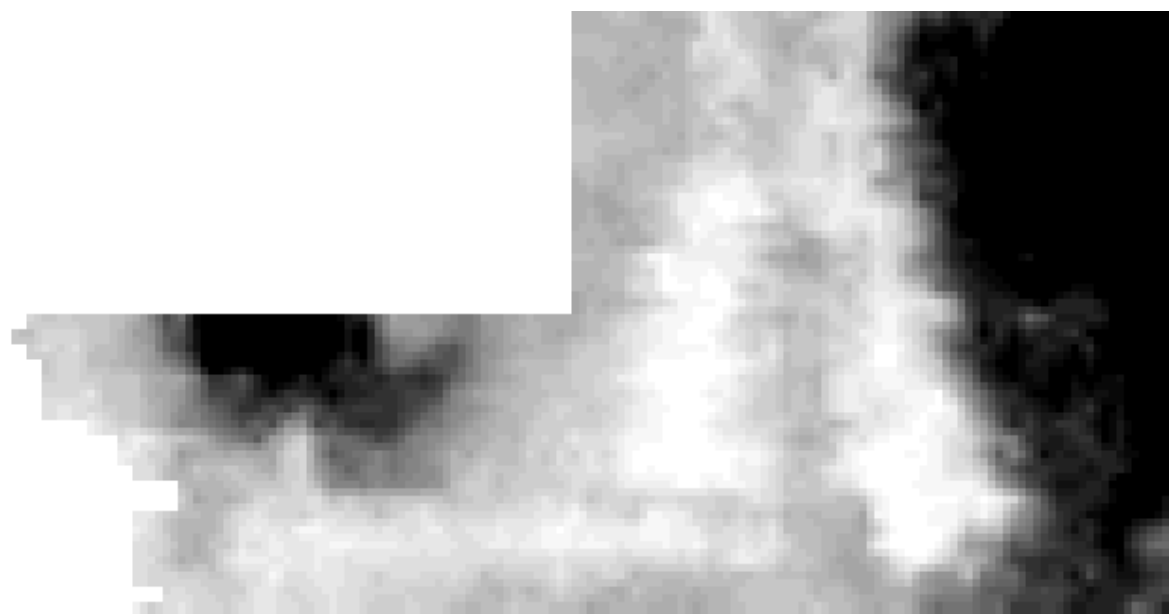
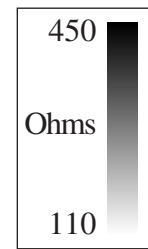


<b>GSB Prospection Ltd.</b>
2007/47 Antonine Wall III - Mumrills
Resistance Data - Area 1
<b>Figure R2</b>

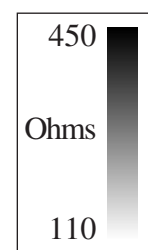




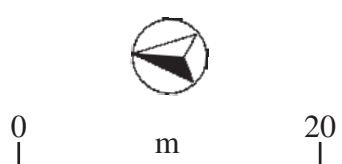
**Raw Data**



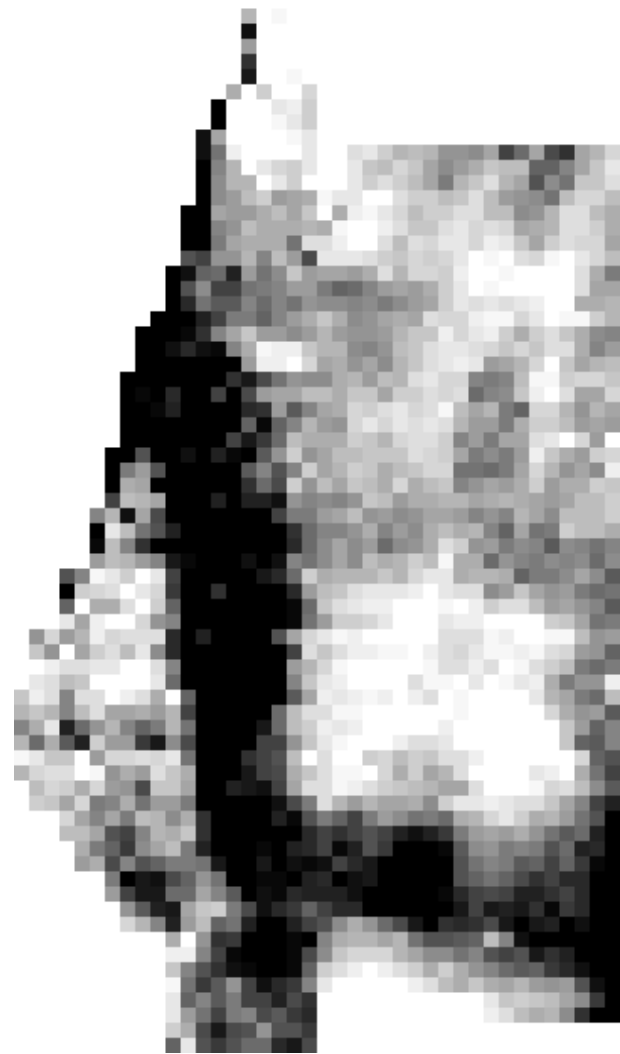
**Interpolated Data**



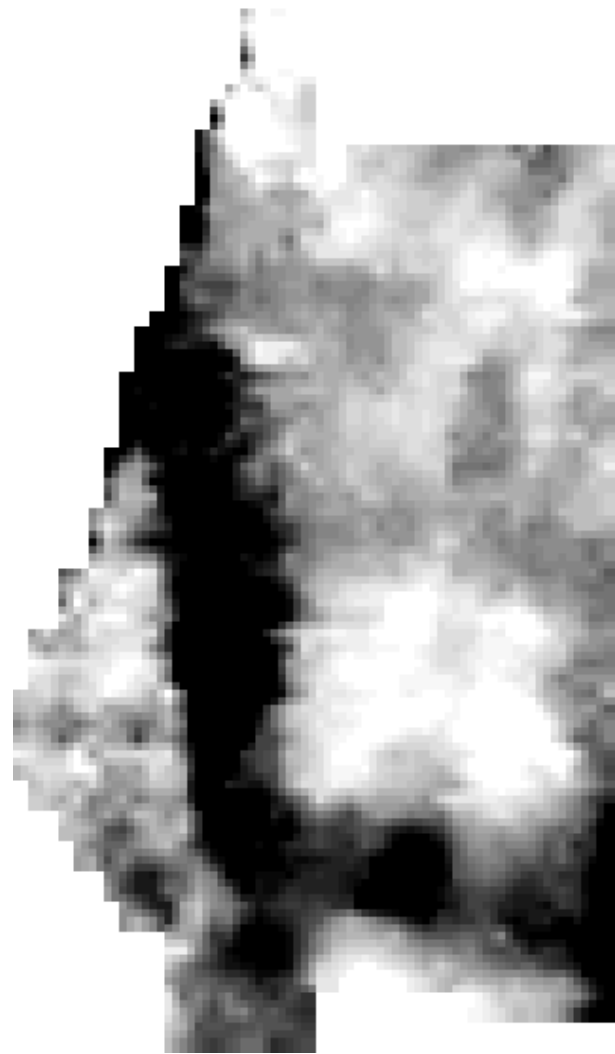
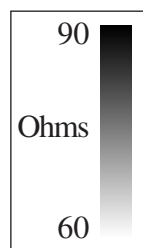
**High Pass Filtered Data**



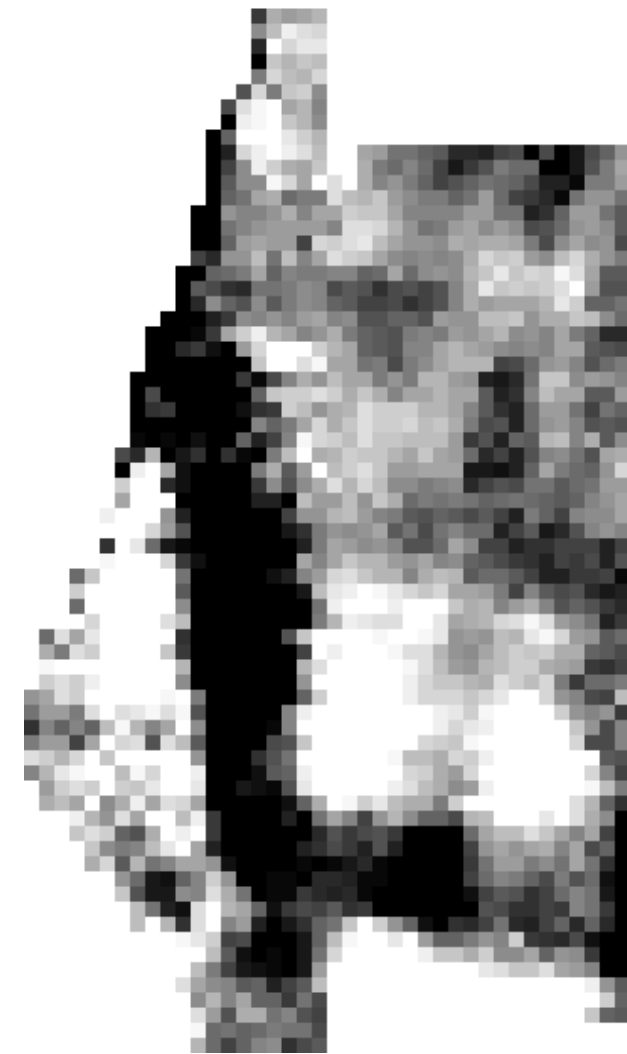
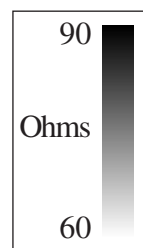
<b>GSB Prospection Ltd.</b>
2007/47 Antonine Wall III - Mumrills
Resistance Data - Area 2
<b>Figure R4</b>



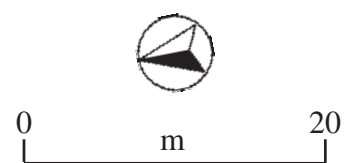
**Raw Data**



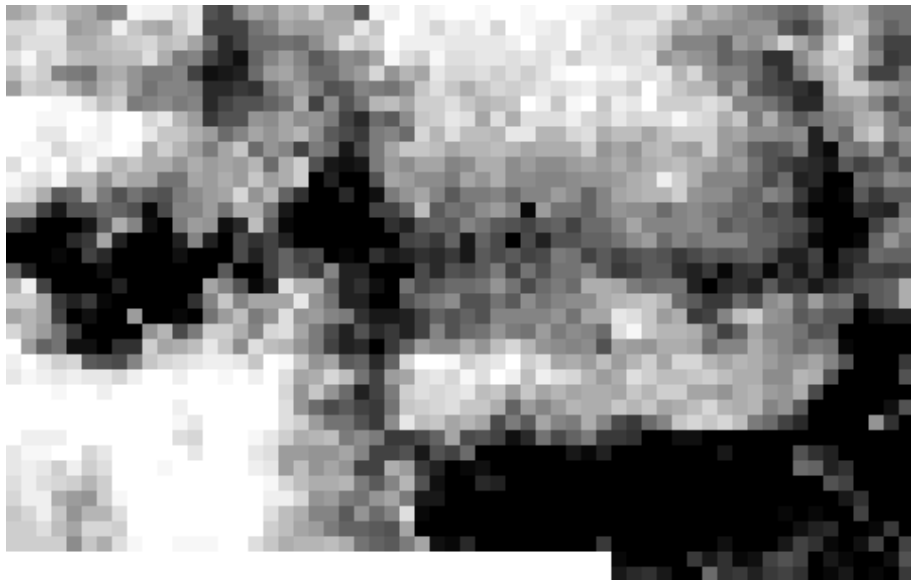
**Interpolated Data**



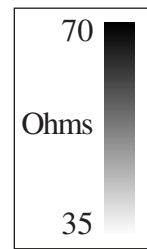
**High Pass Filtered Data**



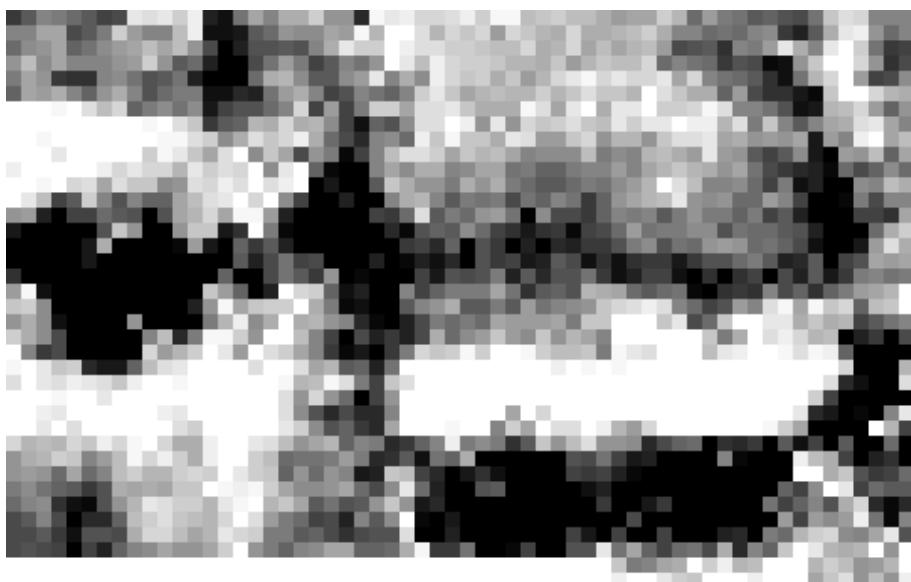
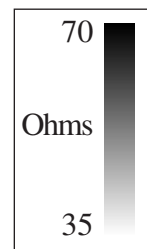
<b>GSB Prospection Ltd.</b>
2007/47 Antonine Wall III - Mumrills
Resistance Data - Area 4
<b>Figure R5</b>



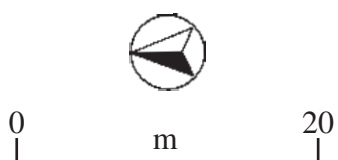
**Raw Data**



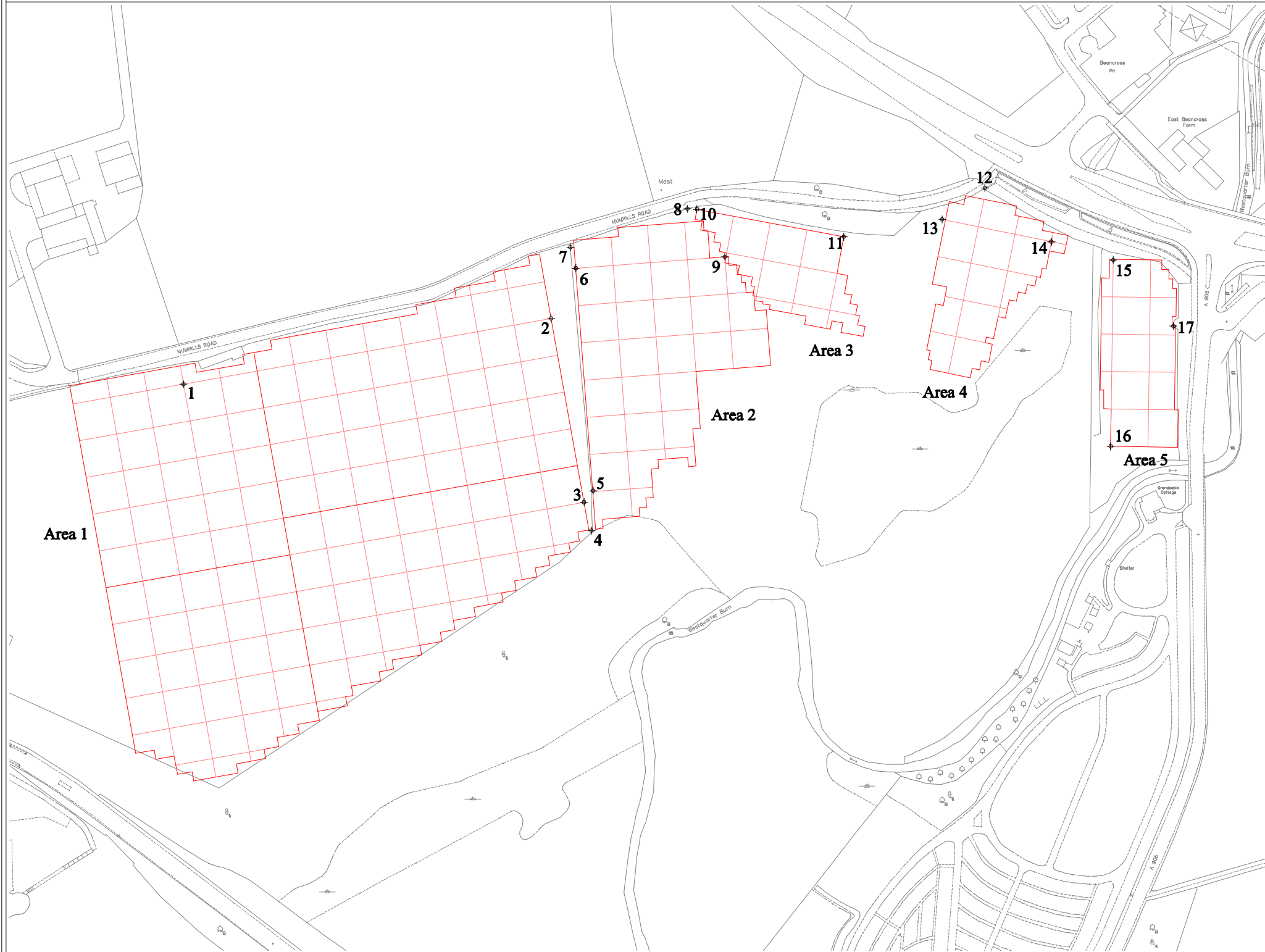
**Interpolated Data**




**High Pass Filtered Data**



<b>GSB Prospection Ltd.</b>
2007/47 Antonine Wall III - Mumrills
Resistance Data - Area 5
<b>Figure R6</b>



Point	Easting	Northing	Notes
1	291911.6	679504.9	Grid point Area 1
2	292108.4	679540.2	Grid point Area 1
3	292126.1	679441.7	Grid point Area 1
4	292130.1	679426.5	Field corner
5	292131.0	679447.9	Grid point Area 2
6	292121.7	679567.0	Grid point Area 2
7	292118.7	679578.2	Field corner
8	292181.4	679598.9	Fence corner
9	292201.4	679573.1	Grid point Area 2
10	292186.5	679598.6	Grid point Area 3
11	292265.1	679583.8	Grid point Area 3
12	292340.7	679609.9	Field corner
13	292317.8	679593.1	20m baseline point Area 4
14	292376.4	679581.2	Grid point Area 4
15	292409.5	679571.4	Grid point Area 5
16	292408.0	679471.7	Grid point Area 5
17	292441.7	679535.9	Gatepost

 20m grid divisions



not to scale