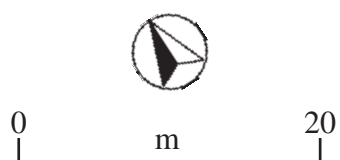
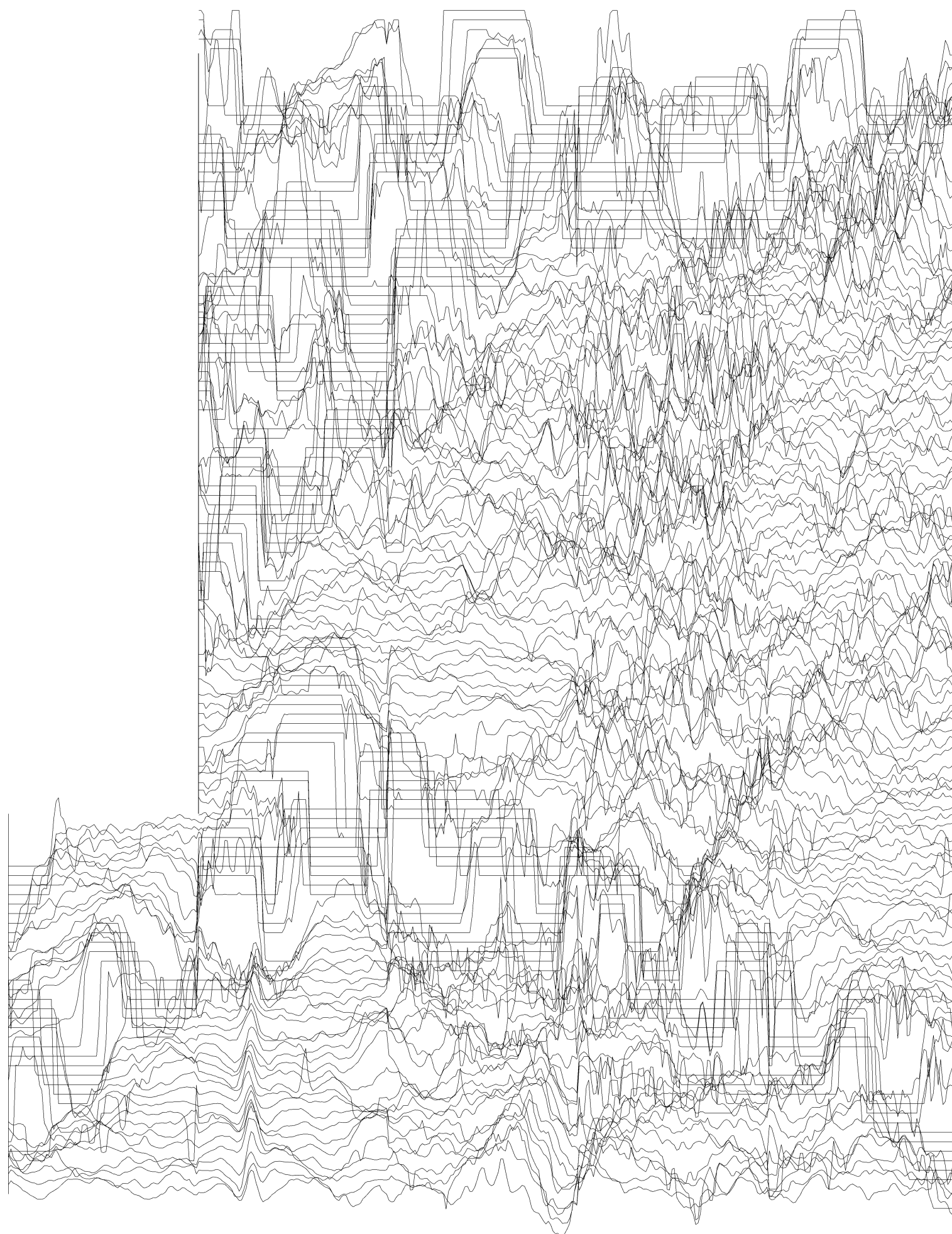


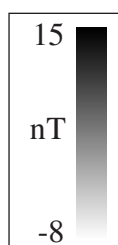
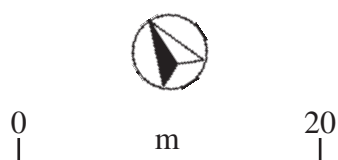
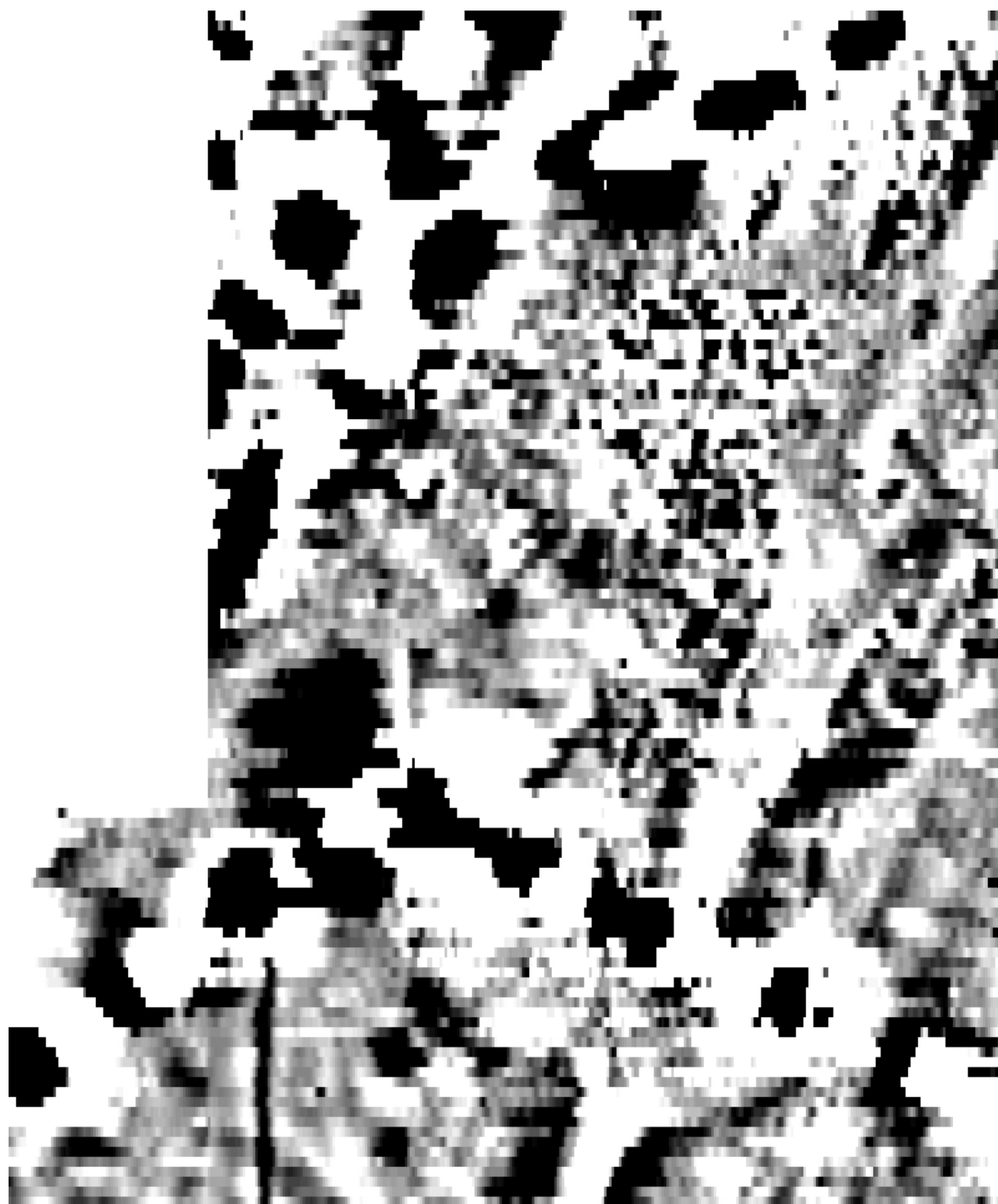
30 nT

GSB Prospection Ltd.
2007/46 Antonine Wall III - Inveravon Fort
Magnetic Data - Area A
Figure M1

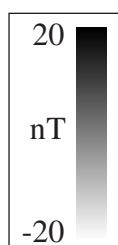
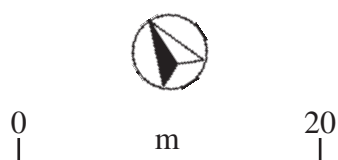
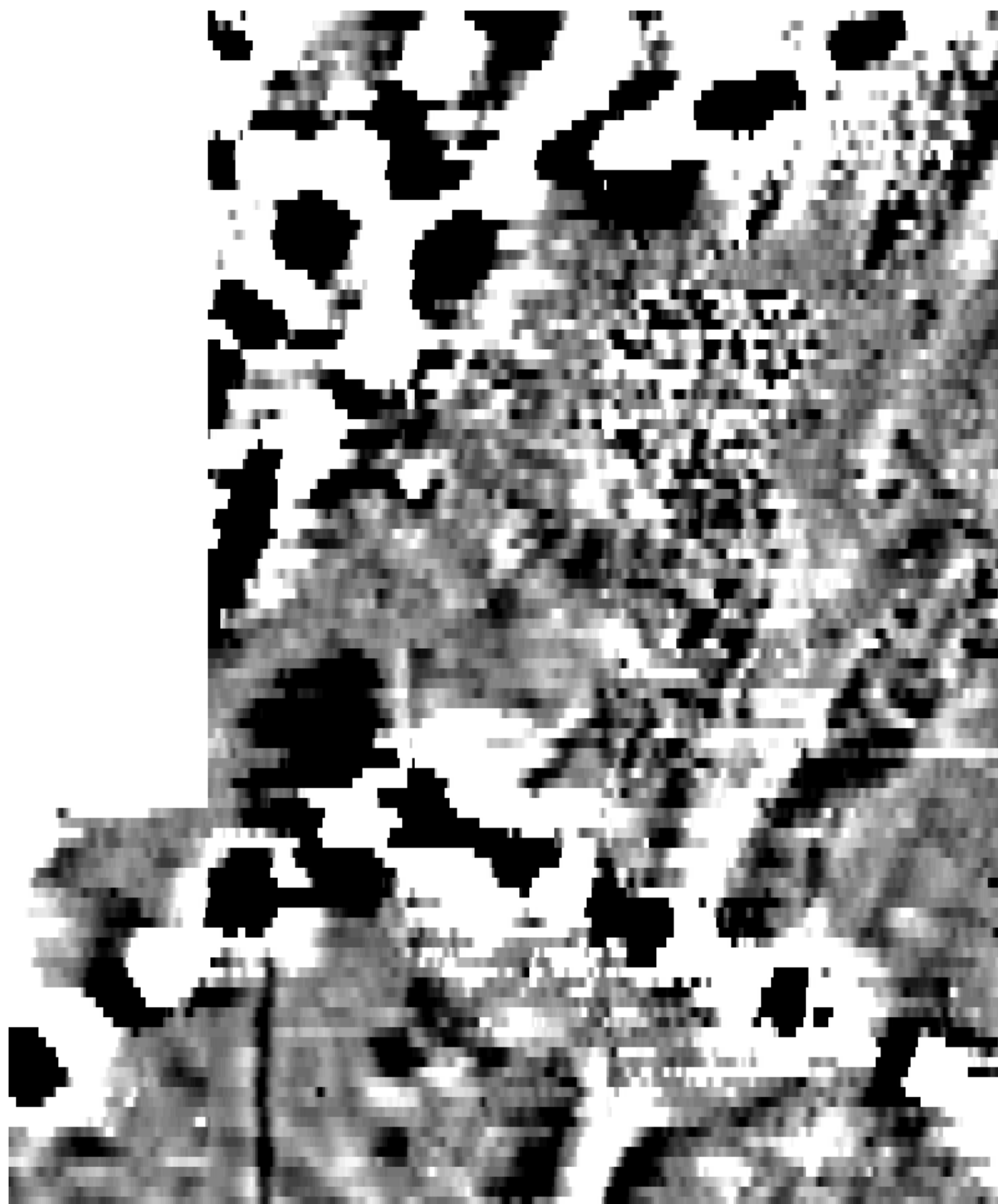


50 nT

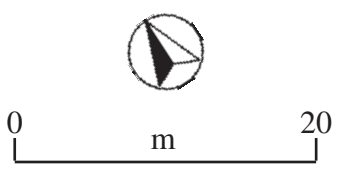
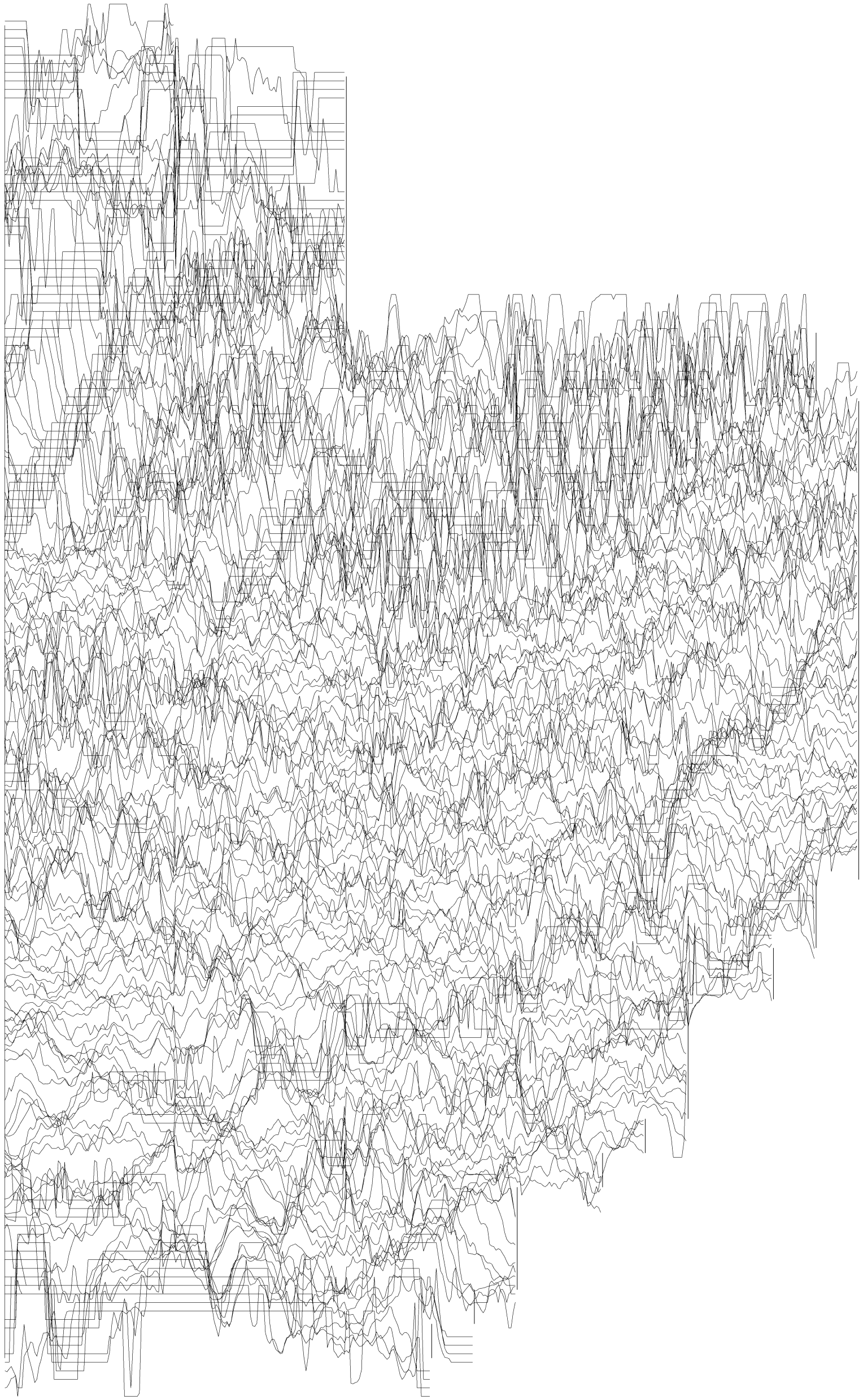
GSB Prospection Ltd.
2007/46 Antonine Wall III - Inveravon Fort
Magnetic Data - Area A
Figure M2



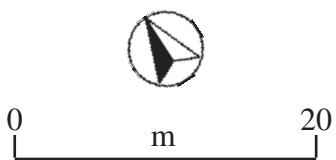
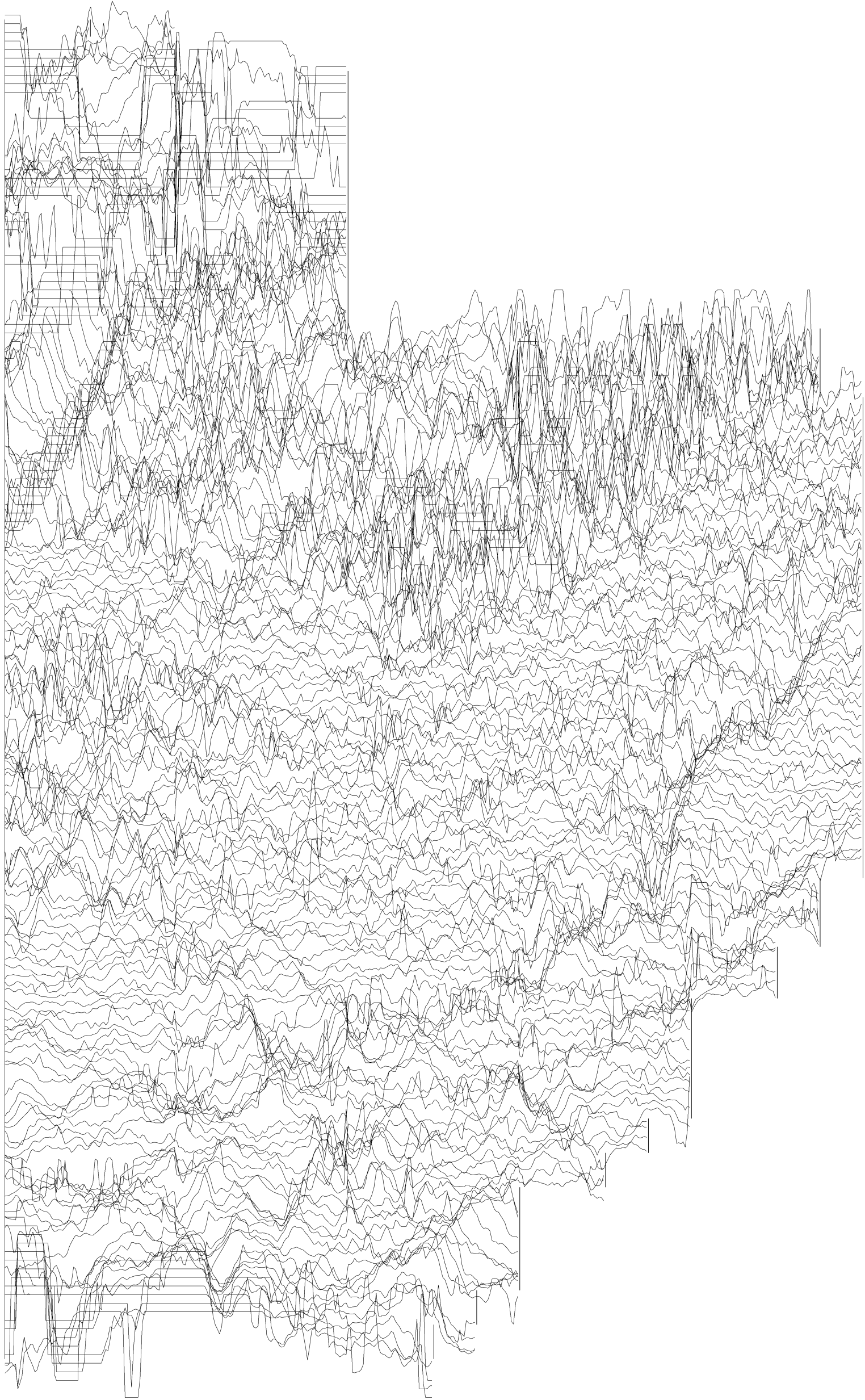
GSB Prospection Ltd.
2007/46 Antonine Wall III - Inveravon Fort
Magnetic Data - Area A
Figure M3



GSB Prospection Ltd.
2007/46 Antonine Wall III - Inveravon Fort
Magnetic Data - Area A
Figure M4

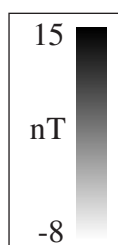
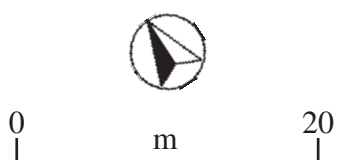
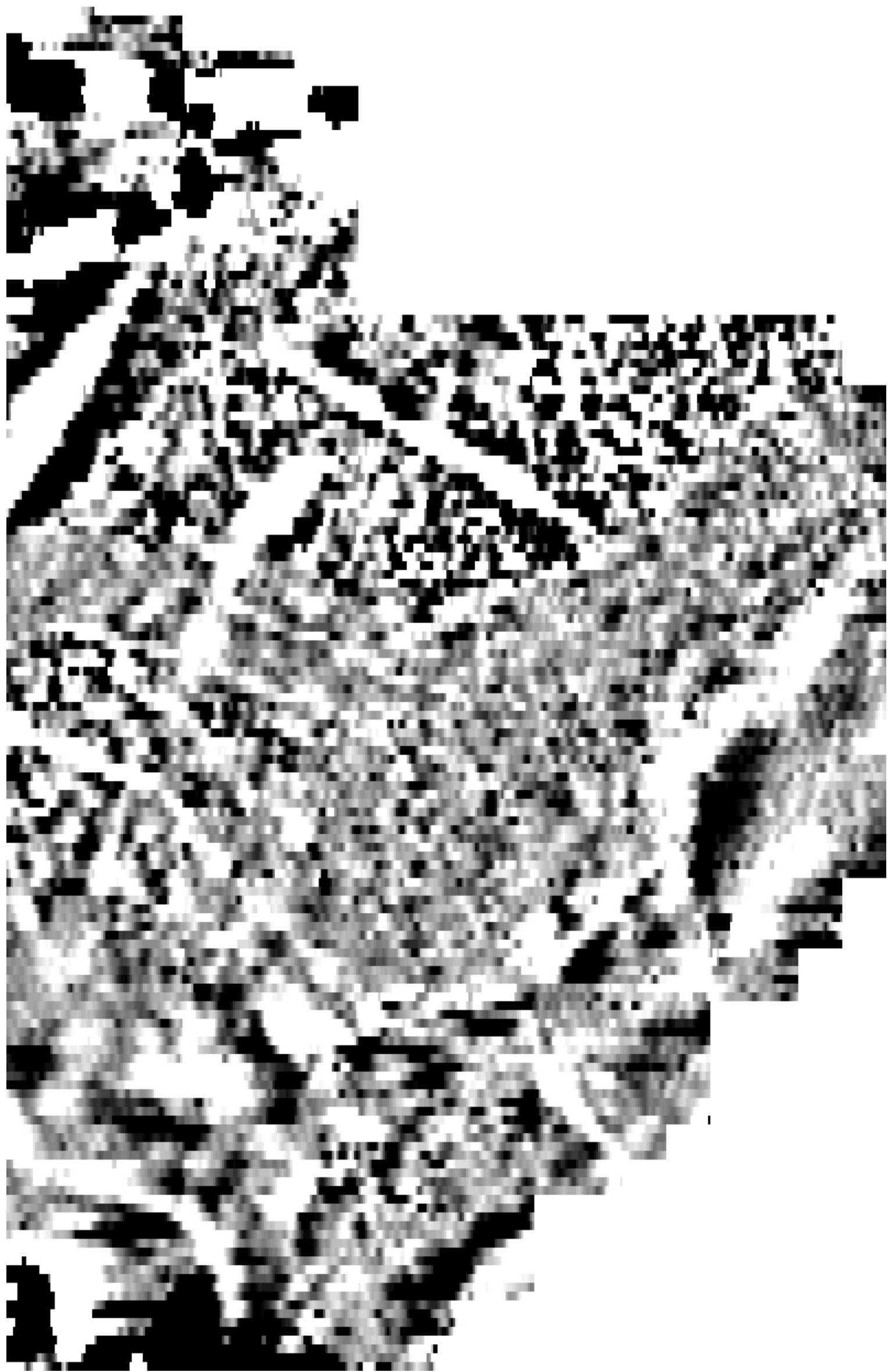


GSB Prospection Ltd.
2007/46 Antonine Wall III - Inveravon Fort
Magnetic Data - Area B
Figure M5

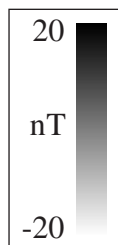
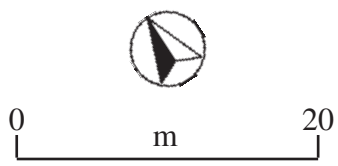
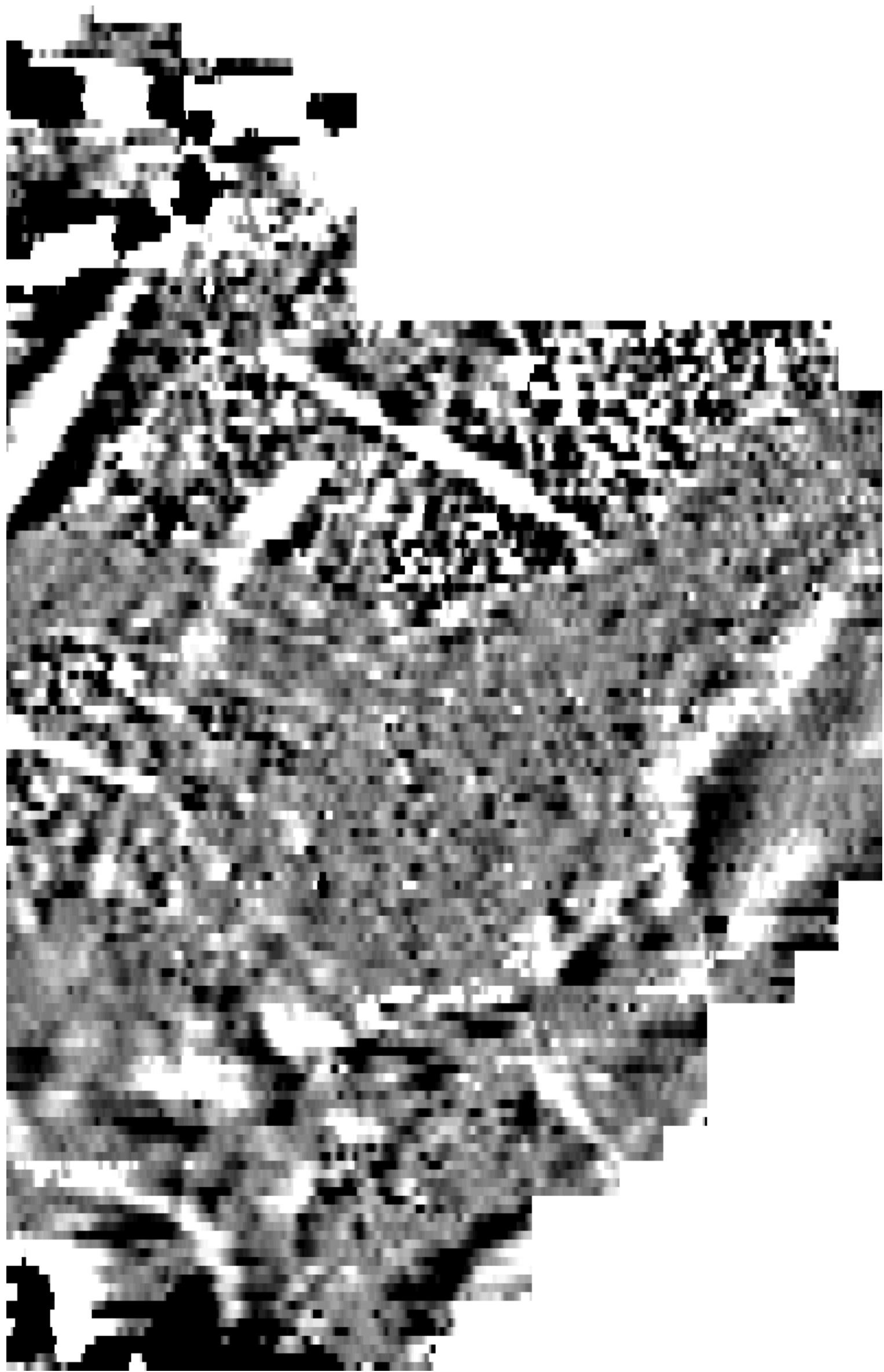


50 nT

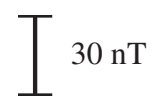
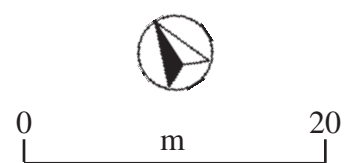
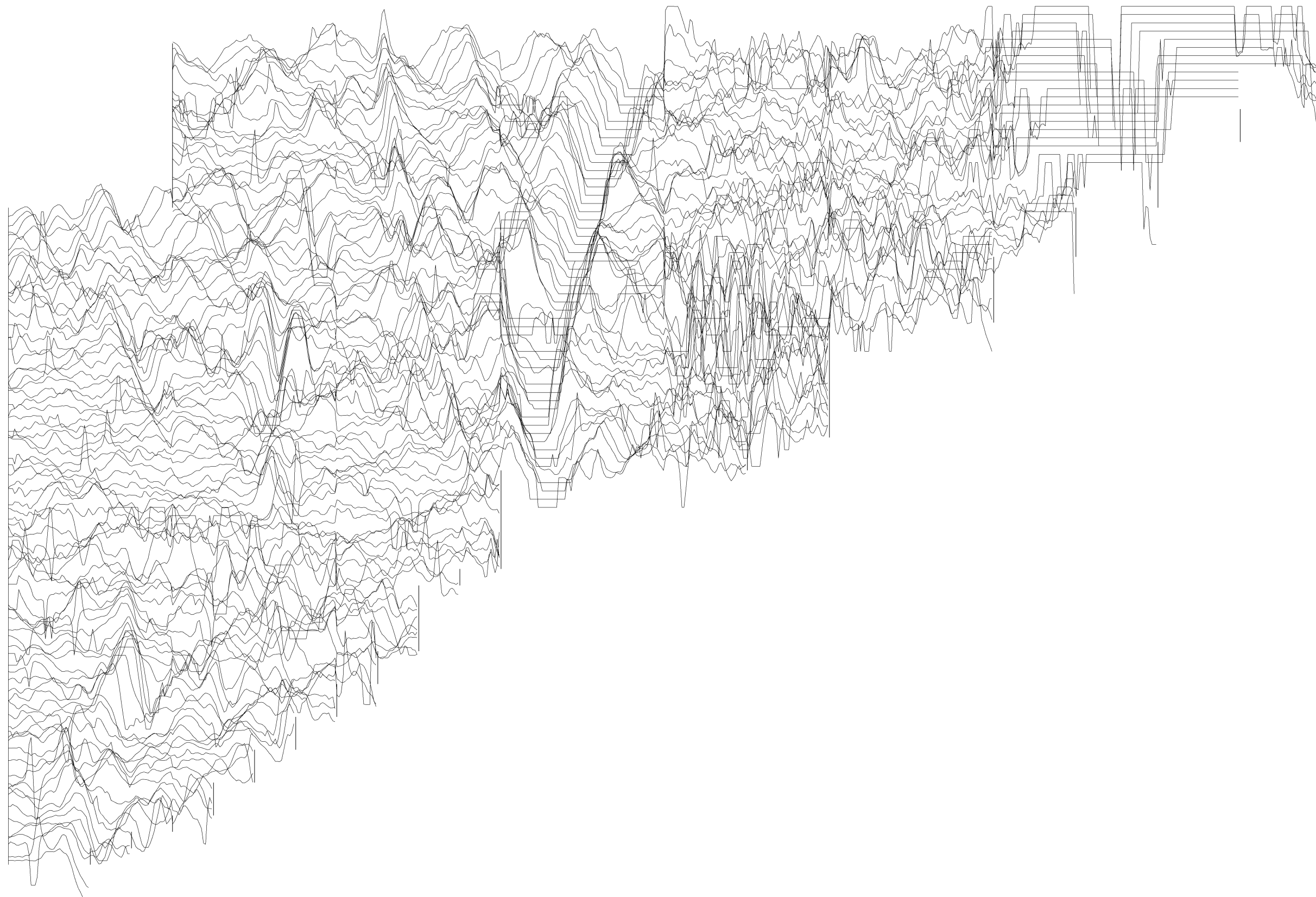
GSB Prospection Ltd.
2007/46 Antonine Wall III - Inveravon Fort
Magnetic Data - Area B
Figure M6



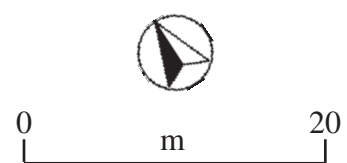
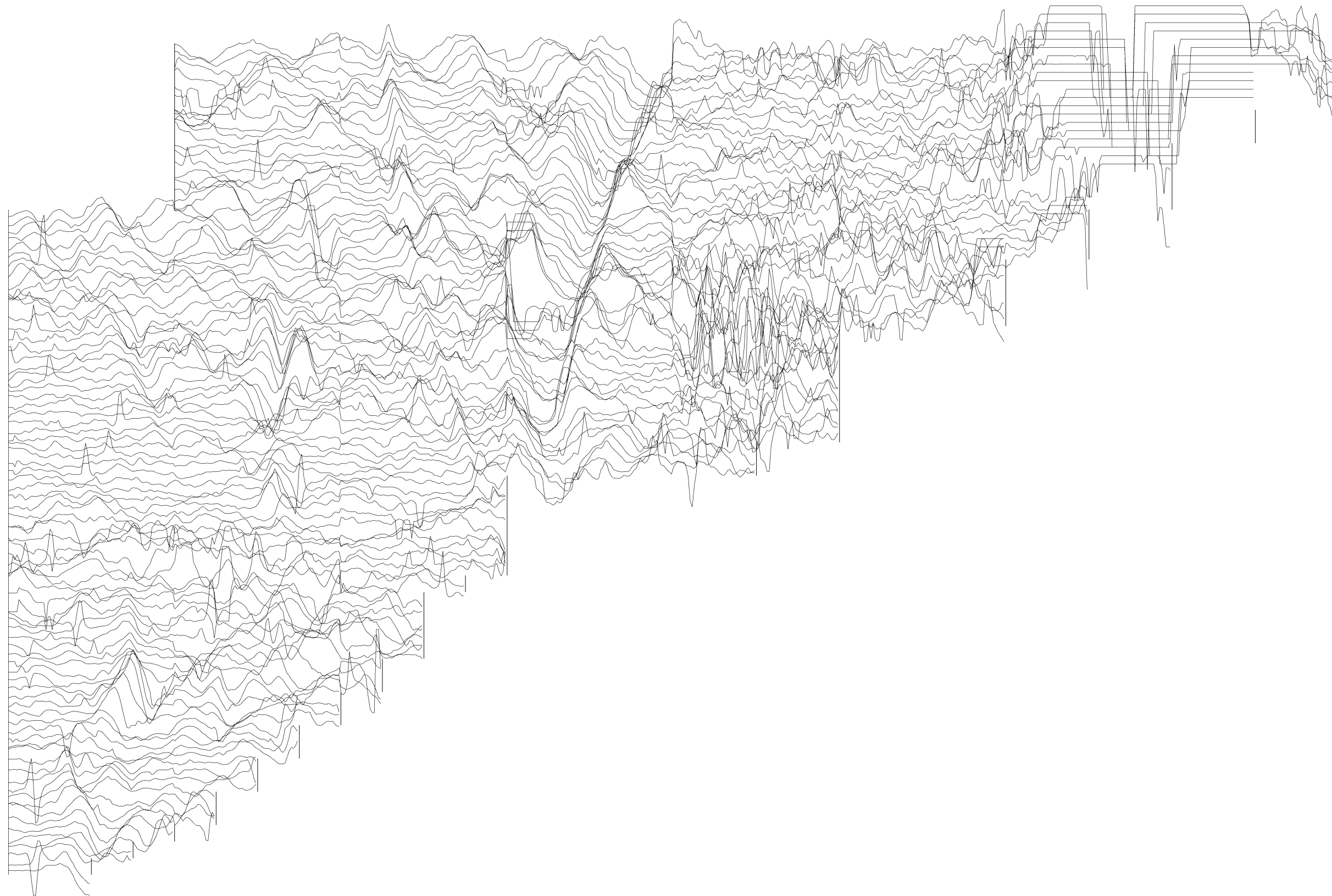
GSB Prospection Ltd.
2007/46 Antonine Wall III - Inveravon Fort
Magnetic Data - Area B
Figure M7



GSB Prospection Ltd.
2007/46 Antonine Wall III - Inveravon Fort
Magnetic Data - Area B
Figure M8

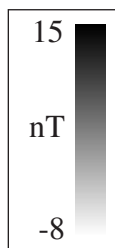
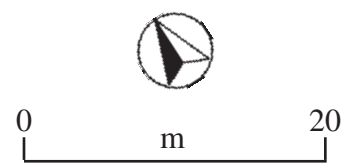
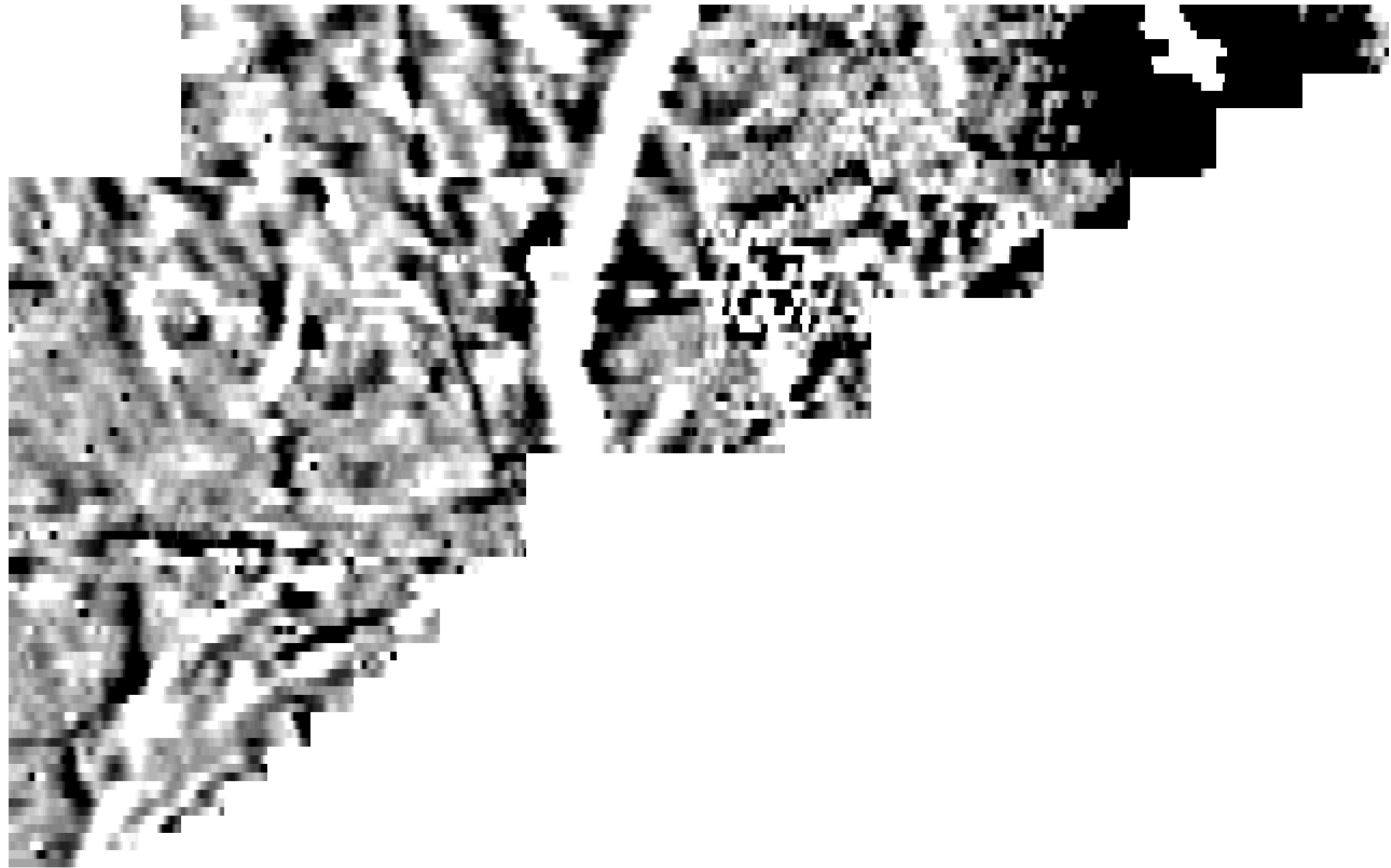


GSB Prospection Ltd.
2007/46 Antonine Wall III - Inveravon Fort
Magnetic Data - Area C
Figure M9

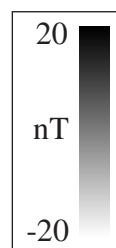
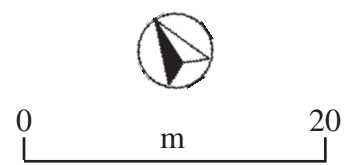
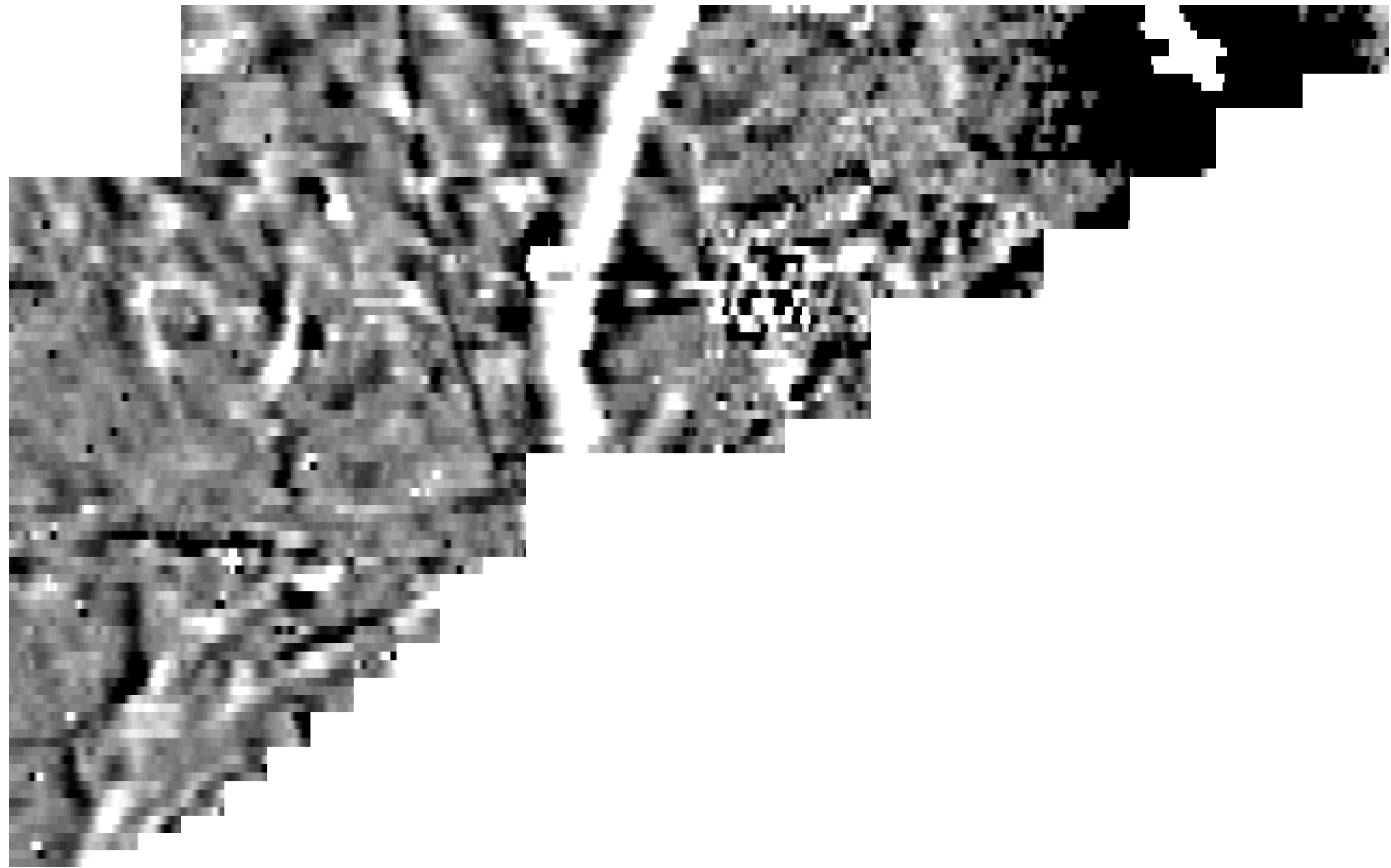


50 nT

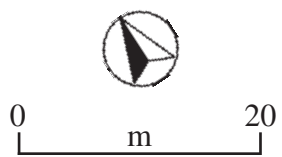
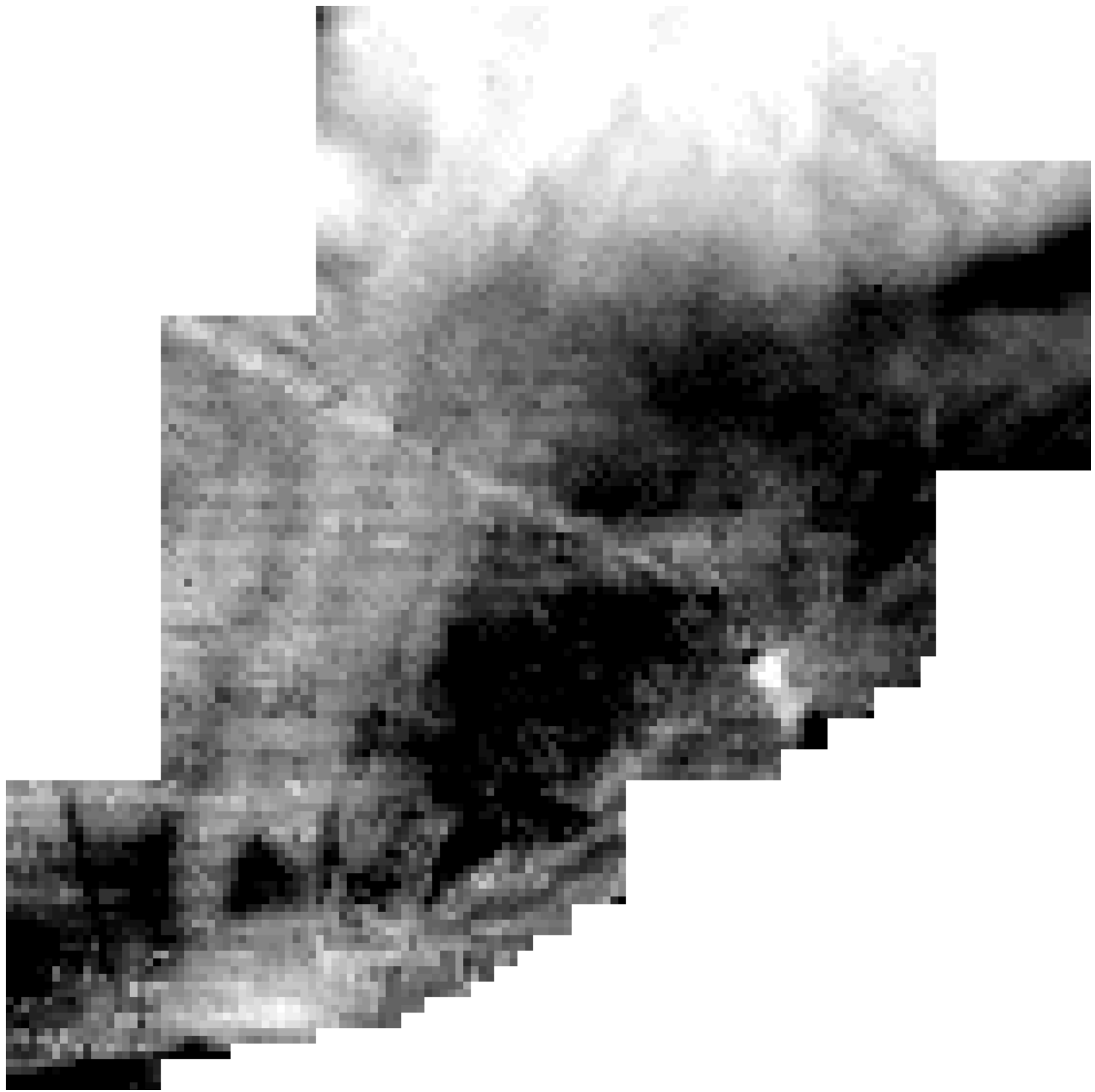
GSB Prospection Ltd.
2007/46 Antonine Wall III - Inveravon Fort
Magnetic Data - Area C
Figure M10



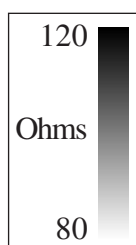
GSB Prospection Ltd.
2007/46 Antonine Wall III - Inveravon Fort
Magnetic Data - Area C
Figure M11



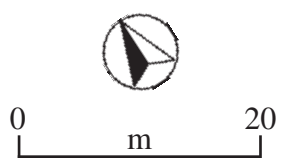
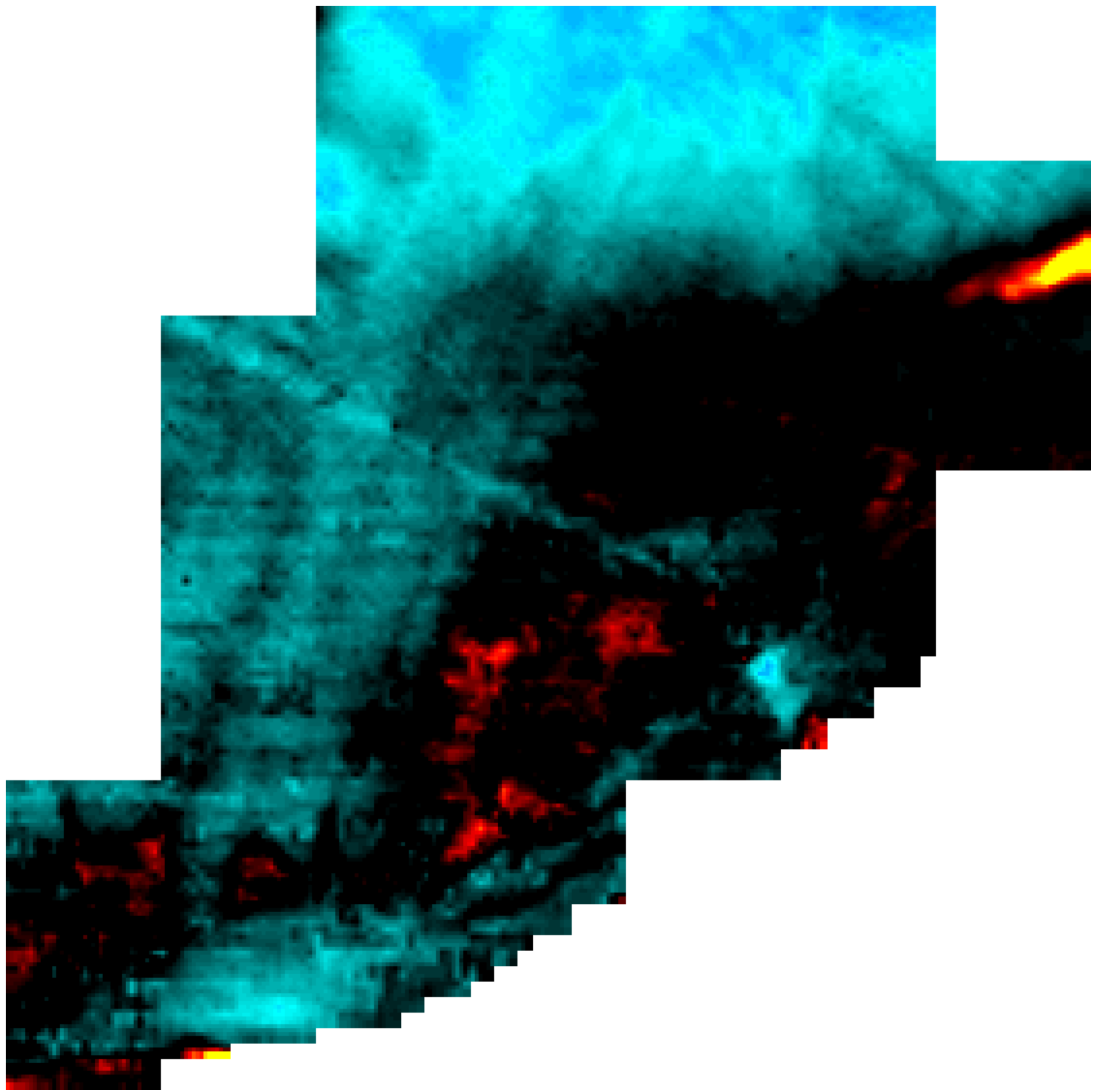
GSB Prospection Ltd.
2007/46 Antonine Wall III - Inveravon Fort
Magnetic Data - Area C
Figure M12



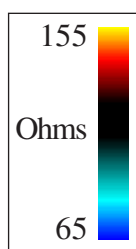
Raw Data



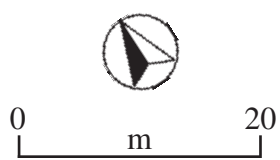
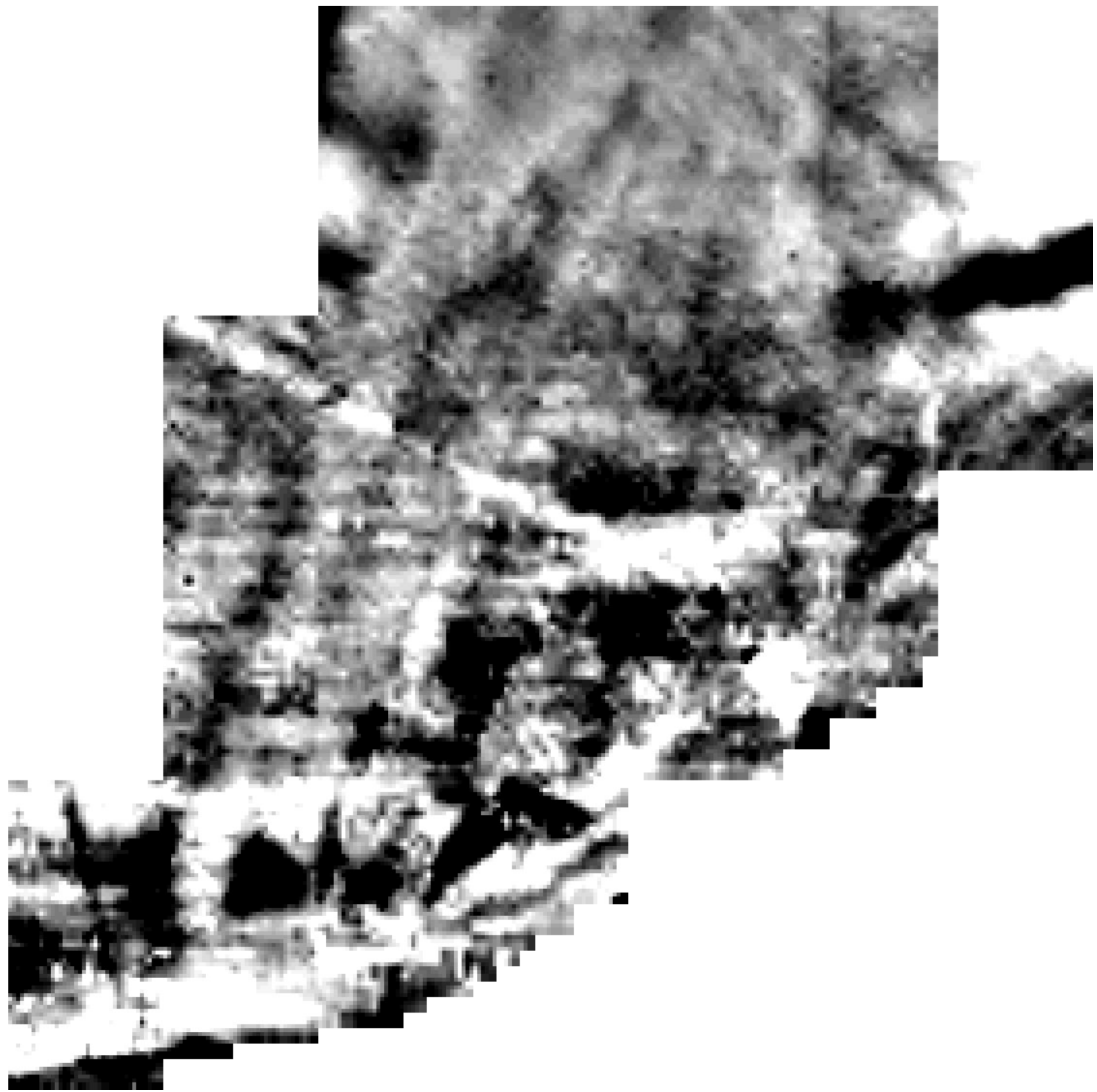
GSB Prospection Ltd.
2007/46 Antonine Wall III - Inveravon Fort
Resistance Data
Figure R1



Interpolated Data



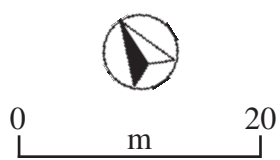
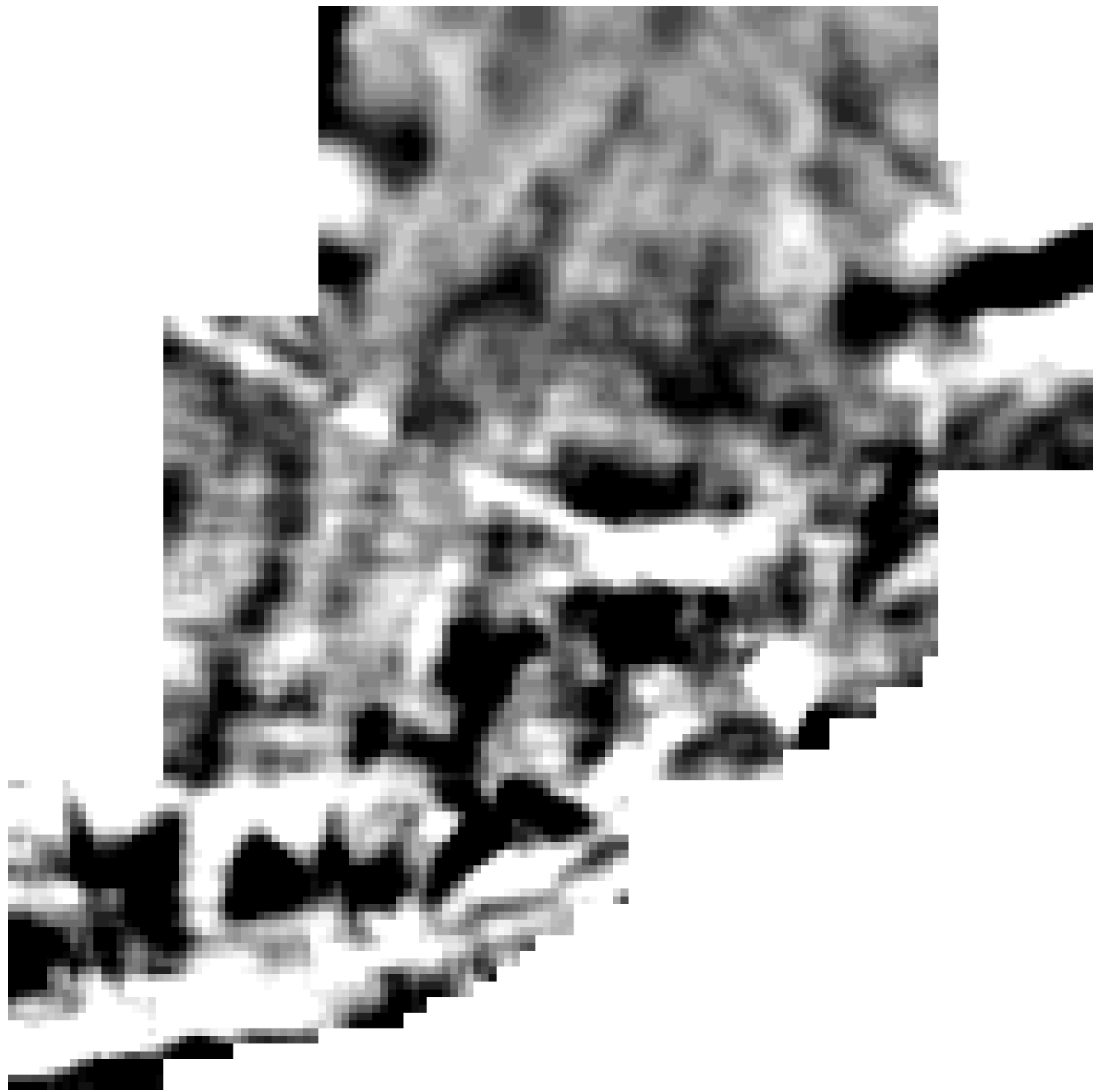
GSB Prospection Ltd.
2007/46 Antonine Wall III - Inveravon Fort
Resistance Data
Figure R2



High Pass Filtered &
Interpolated Data



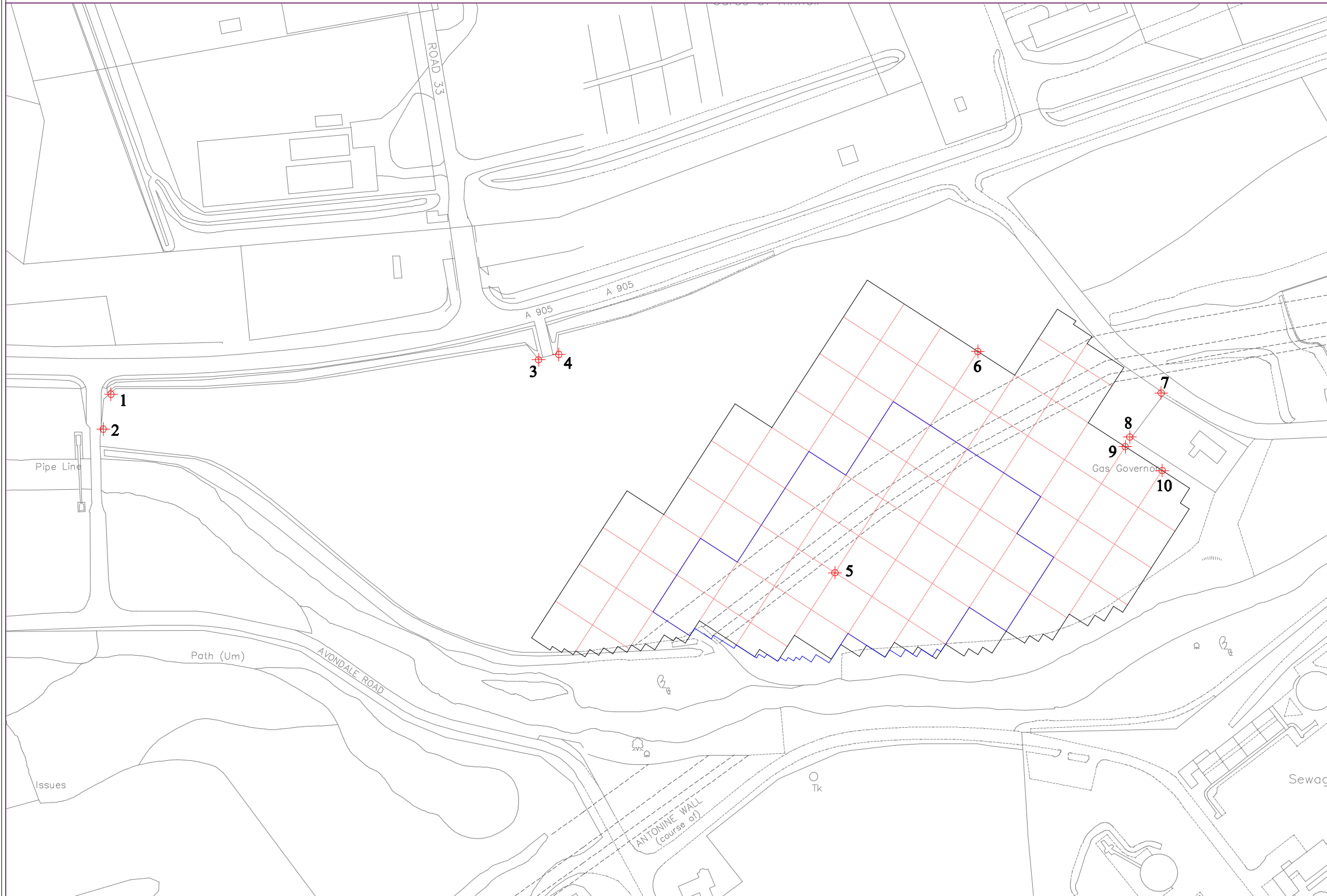
GSB Prospection Ltd.
2007/46 Antonine Wall III - Inveravon Fort
Resistance Data
Figure R3




**High Pass Filtered &
Smoothed Data**



GSB Prospection Ltd.
2007/46 Antonine Wall III - Inveravon Fort
Resistance Data
Figure R4



Point	Eastings	Northings	Notes
1	294784.500	679771.630	Field Corner
2	294780.980	679755.710	Bridge Corner
3	294979.420	679787.3	Field Entrance
4	294988.650	679789.720	Field Entrance
5	295114.551	679690.260	Grid Point
6	295179.630	679791.080	Grid Point
7	295263.220	679772.180	Compound Corner
8	295248.940	679752.110	Compound Corner
9	295246.844	679747.694	Grid Point
10	295263.690	679736.820	Grid Point

 20m grid divisions


not to scale