

GSB

PROSPECTION Ltd

GEOPHYSICAL SURVEY REPORT 2008/31

Friar's Wash Hertfordshire



Client:



Cowburn Farm, Market Street, Thornton, Bradford, West Yorkshire, BD13 3HW

Tel: +44 1274 835016

Fax: +44 1274 830212

Email: gsb@gsbprospection.com

Web: www.gsbprospection.com

Specialising in Shallow and Archaeological Prospection

GSB Survey No. 08/31

Friar’s Wash, Hertfordshire

Time Team Series XVI Programme VI

NGR	TL 100 145		
Location	The site is approximately 6.5km northeast of Hemel Hempstead and 3.2km west of Harpenden, Herts. Junction 9 of the M1 motorway is 0.75km to the west. Access to the site at Verlam End Farm, also known as Friar’s Wash, is from the A5183 0.5km to the southwest.		
District	St. Albans City and District Council.	Parish	Harpenden Town Council.
Topography	Flat, sloping very gently to the southwest.		
Current land-use	Pasture.		
Soils	Flinty fine silty soils of the Charity 2 (571m) association. Fine silty over clayey and fine loamy soils of the Batcombe (582a) association (SSEW 1983).		
Geology	Chalk and clay with flints (BGS Sheet 238D).		
Archaeology[#]	Aerial photographs show two cropmarks characteristic of Romano-British temples and a third circular features; ditched enclosures and a triple ditch system are also visible. Ploughing has disturbed Romano-British building foundations (SMR) and fieldwalking has recovered several Roman pottery sherds and pieces of roof tile.		
Survey Methods	Fluxgate Gradiometer and Resistance.		

Aims

To locate any detectable archaeology within the survey areas. The work forms part of a wider archaeological assessment being carried out by Channel 4’s **Time Team**.

Summary of Results

While both of the Romano-British temples and the adjacent circular shrine are visible in the resistance data, the results are not as clear as the cropmark evidence; however the resistance survey has identified a third temple to the east. By contrast, the magnetic data simply identify these features as areas of increased magnetic response, without showing any particular detail.

Both geophysical techniques have detected (parts of) the triple ditch system and the enclosure ditch around the temple complex. In the resistance data the enclosing ditch shows as a series of low responses, which may suggest post-pits.

Both techniques identified areas of natural soil and geological variations which have confused the interpretations.

Project Information

Project Co-ordinator: Emma Wood BSc MIFA.
Project Assistants: Dr John Gater and Jon Tanner.
Date of Fieldwork: 10th – 12th June 2008.
Date of Report: 6th November 2008.

[#] Taken from *Mower et al., 2008*

Survey Specifications

Method

The survey grid was set out by **GSB Prospection Ltd.** using tapes and tied in to the Ordnance Survey (OS) grid using a Trimble R8 Real Time Kinematic (RTK) GPS system by **Dr Henry Chapman.**

Technique	Traverse Separation	Reading Interval	Instrument	Survey Size
Magnetometer – Detailed (Appendix 1)	1m	0.25m	Bartington Grad 601-2	1.4ha
Resistance – Twin Probe (Appendix 1)	1m	1m	Geoscan RM15 Meter 0.5m probe separation	0.6ha
GPR (Appendix 1)	-	-	-	-

Data Processing

	Magnetic	Resistance	GPR
Tilt Correct	Y	N	-
De-stagger	Y	N	-
Interpolate	Y	Y	-
Filter	N	N	-

Presentation of Results

Report Figures (Printed & Archive CD): Location plots, data plots and interpretation diagrams on base map (Figures 1-3).

Reference Figures (Archive CD): Data plots and interpretations at 1:500 - for reference and analysis. (Figures A1-A4)

Plot Formats: See Appendix 1: Technical Information, at end of report.

General Considerations

Conditions for survey were good as the ground cover consisted of short pasture with no obstructions. However, gaps within the resistance data are due to spoil heaps and trenches.

Small scale ferrous responses within the magnetic data are likely to be of modern origin and will not be discussed within the report unless deemed relevant. These responses can be seen in the XY data plots (on the Archive CD) as sharp peaks.

A mains gas pipe can clearly be seen in the magnetic data, which will have masked any archaeology present within this area.

Results of Survey

1. Gradiometer Survey

- 1.1 The survey grid was positioned to target the temples, the circular feature, the triple ditches and the enclosure ditch that have been identified in aerial photographs.
- 1.2 Several linear positive and negative responses and trends (A) were detected, on a southwest-northeast alignment, and these broadly correspond with the triple ditch system but in places only two linears rather than three are visible.
- 1.3 A group of ditch-like anomalies (B) to the southeast and at a slight angle to the above group corresponds with part of the surrounding enclosure ditch. Unfortunately the magnetic ‘halo’ from the gas pipe will have masked the eastern parts of this ditch, if indeed it continues in this direction.
- 1.4 Several areas of increased magnetic response are visible in the data. Those at (C) coincide with the location of the temples, and are likely to result from structural remains or rubble. Anomaly (D) coincides with the foundations seen in the resistance data (see 2.1 below).
- 1.5 Another area of increased response at (E) may also indicate structural remains, but as it aligns with an old field boundary (F) it may be connected with this feature.
- 1.6 A number of trends are visible throughout the survey area. Generally, if not natural, these are likely to represent past agricultural activity.
- 1.7 A number of potential natural anomalies are visible in the north of the dataset. These broad, strong responses are most likely to be due to variations in the pedology and/or geology.
- 1.8 The response due to the gas main (see 1.3 above) can be clearly seen dominating much of the survey area. As before, the ‘halo’ on each side of the pipe will have masked any anomalies present in that area.

2. Resistance Survey

- 2.1 A rectangular high resistance anomaly (1) approximately 6m by 6m was identified along with two ‘L’ shaped high resistance anomalies. This group of anomalies corresponds directly with the position of the northern temple on the aerial photographs: the rectangular feature and ‘L’ shaped anomalies represent the remains of the *cella* and the *ambulatory* respectively, with rubble causing an adjacent small area of high resistance. This interpretation was confirmed by subsequent excavation. Similar responses at (2) are the remains of the southern temple.
- 2.2 Two linear high resistance anomalies (3) extend southeast from the vicinity of the two temples: the shorter southern linear terminates in an area of high resistance. These responses are typical of those from the remains of building foundations, or perhaps pathways, and a rubble spread. Subsequent excavation exposed the remains of another temple at (3).
- 2.3 An annular high resistance anomaly (4) approximately 10m in diameter, but truncated by the edge of the survey area, is visible immediately to the northeast of the temples. This anomaly corresponds with the circular parchmark visible on aerial photographs. An internal anomaly can also be seen in the data and excavation revealed this to be a chalk floor.

- 2.4 Two linear low resistance anomalies can be seen adjacent along the northwest edge of the survey area. These anomalies correspond with the outermost components of the triple ditch system that is visible on the aerial photographs.
- 2.5 Several sub-circular low resistance anomalies (5) are visible in the south of the dataset and are likely to represent pits. Due to the curving alignment of these it is possible that they coincide with the enclosure ditch (B) seen in the magnetic data and therefore may represent post-pits within, though such an interpretation is speculative.
- 2.6 A number of high resistance trends can be seen in the data. Most could be of natural or relatively recent, perhaps agricultural origin.
- 2.7 Large areas of both high and low resistance dominating the dataset are caused by pedological and geological variation and are categorized as '*?Natural*'.

3. Conclusions

- 3.1 The resistance survey successfully located the two Romano-British temples shown on the aerial photographs. The circular feature northeast of the temples, subsequently interpreted as a shrine, was also identified. A third rectilinear temple was noted to the immediate east, with associated foundations or pathways. Areas of increased response in the magnetic data also coincided with these features.
- 3.2 The gradiometer and resistance surveys identified parts of the triple ditch system and the enclosure ditch, with the resistance data indicating the presence of possible post-pits.
- 3.3 Areas of natural variation in both techniques are seen within the survey area and a gas pipe was also detected. These anomalies will have masked any archaeology immediately within the vicinity.

List of Figures

Report Figures

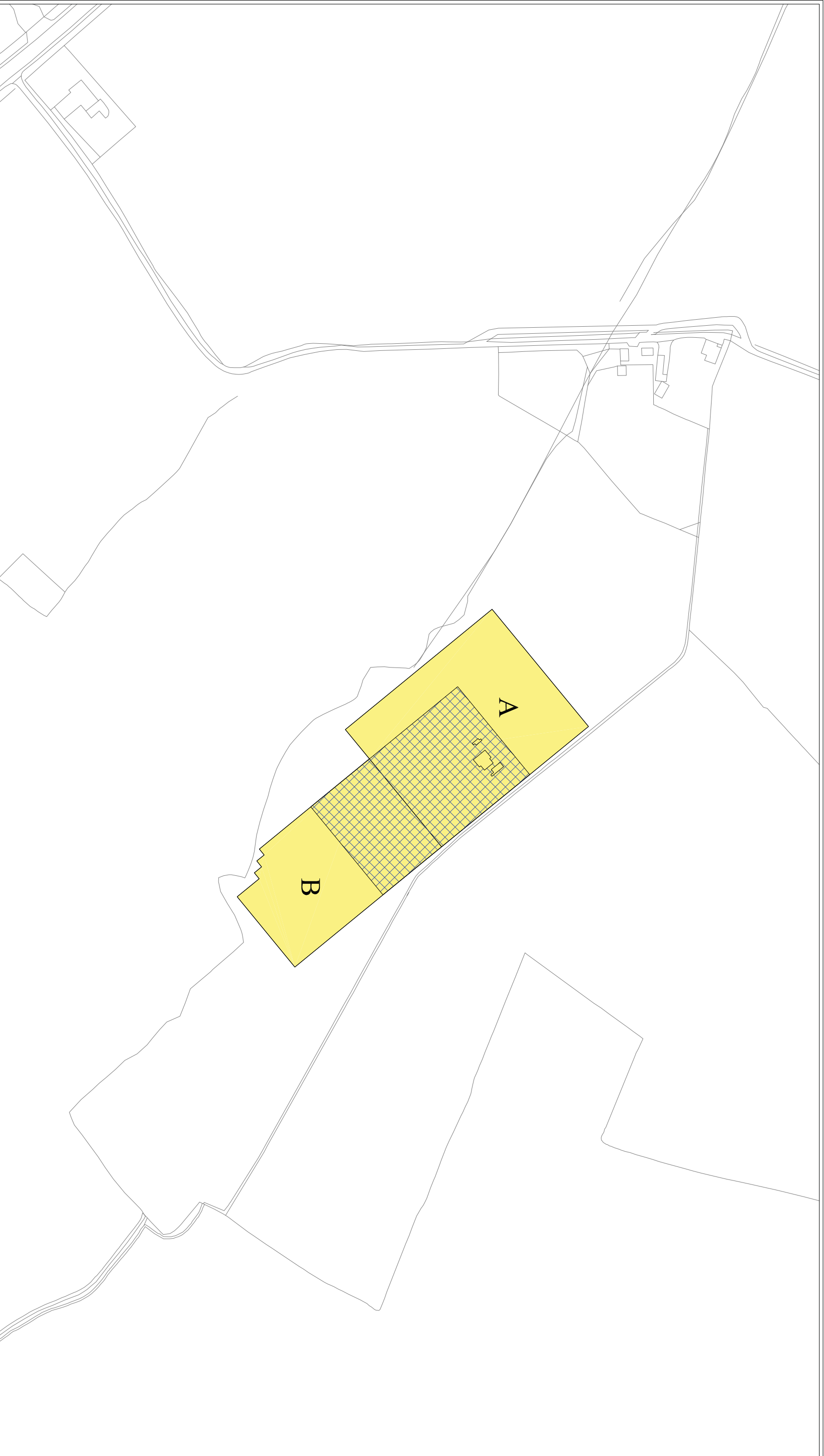
Figure 1	Location of Survey Area	1:2000
Figure 2	Summary Magnetometer Data	1:1250
Figure 3	Summary Resistance Data	1:1000

Reference Figures on CD

Figure A1	Magnetic Data: Area 1A – XY Trace and Greyscale Image	1:500
Figure A2	Magnetic Data: Area 1B – XY Trace and Greyscale Image	1:500
Figure A3	Resistance Data: Greyscale Images	1:500
Figure A4	Resistance Data: Greyscale Images	1:500

References

BGS	<i>Sheet 238D, Aylesbury.</i> Solid and Drift Edition. 1:50000, Institute of Geological Sciences.
Mower J., Knappett B., and Ord L. 2008	<i>Proposed Archaeological Evaluation, Friar’s Wash, Hertfordshire.</i> Unpublished Report.
SSEW 1983	Soils of England and Wales. <i>Sheet 6 South East England.</i> Soil Survey of England and Wales.



Gradimeter Survey (showing reference plot subdivisions)



Resistance Survey

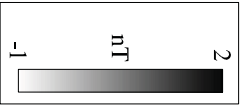
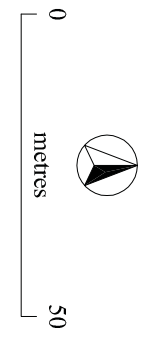
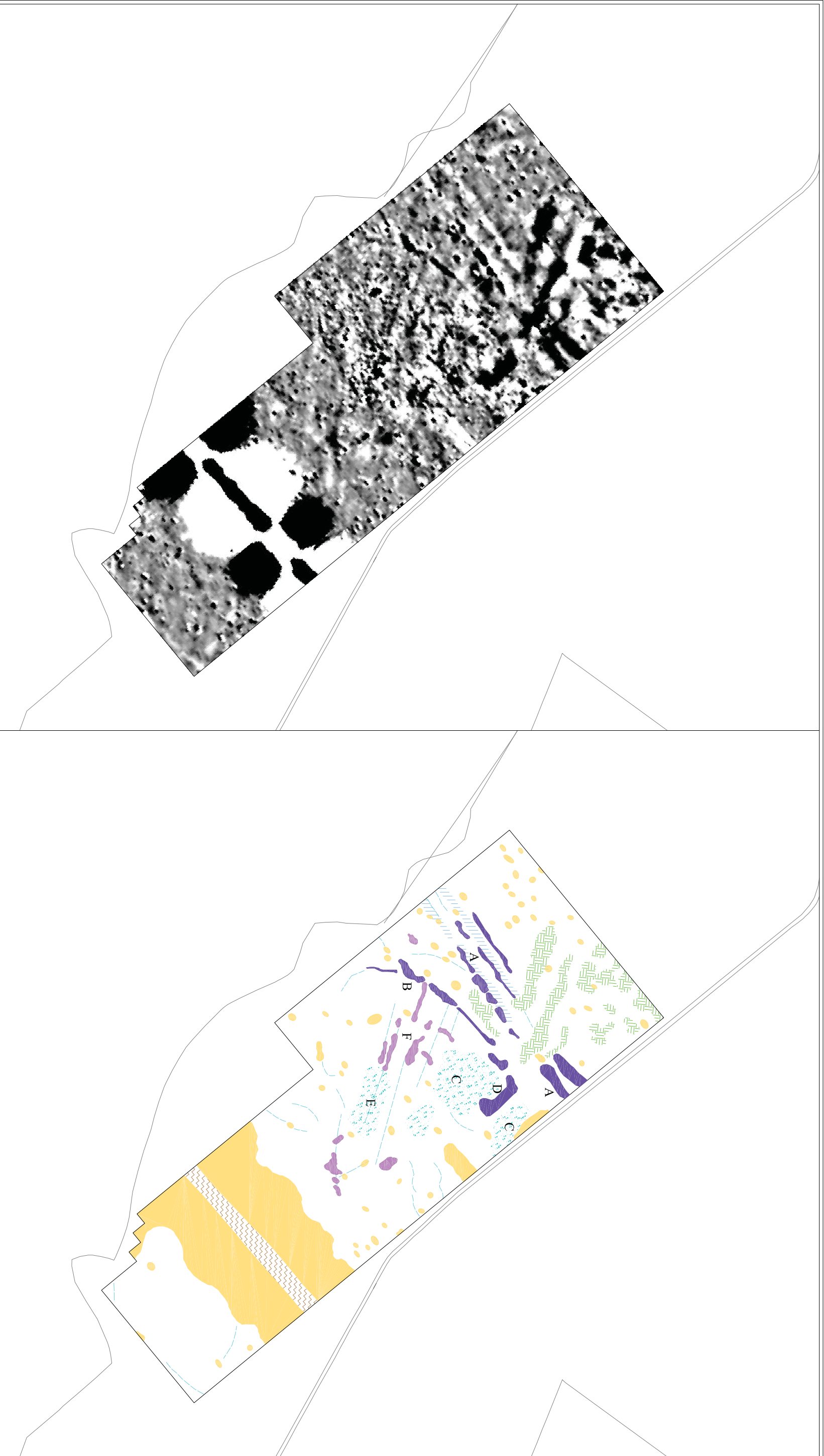
GSB PROSPECTION Ltd.

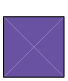

2008/31 Friar's Wash



Location of Survey Areas



Reproduced from the Ordnance Survey Map supplied by Time Team with the permission of the Controller of HMSO © Crown Copyright (AL100018605)

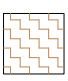

Figure 1



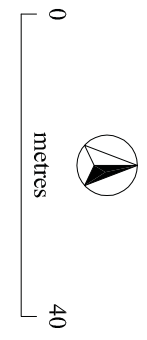
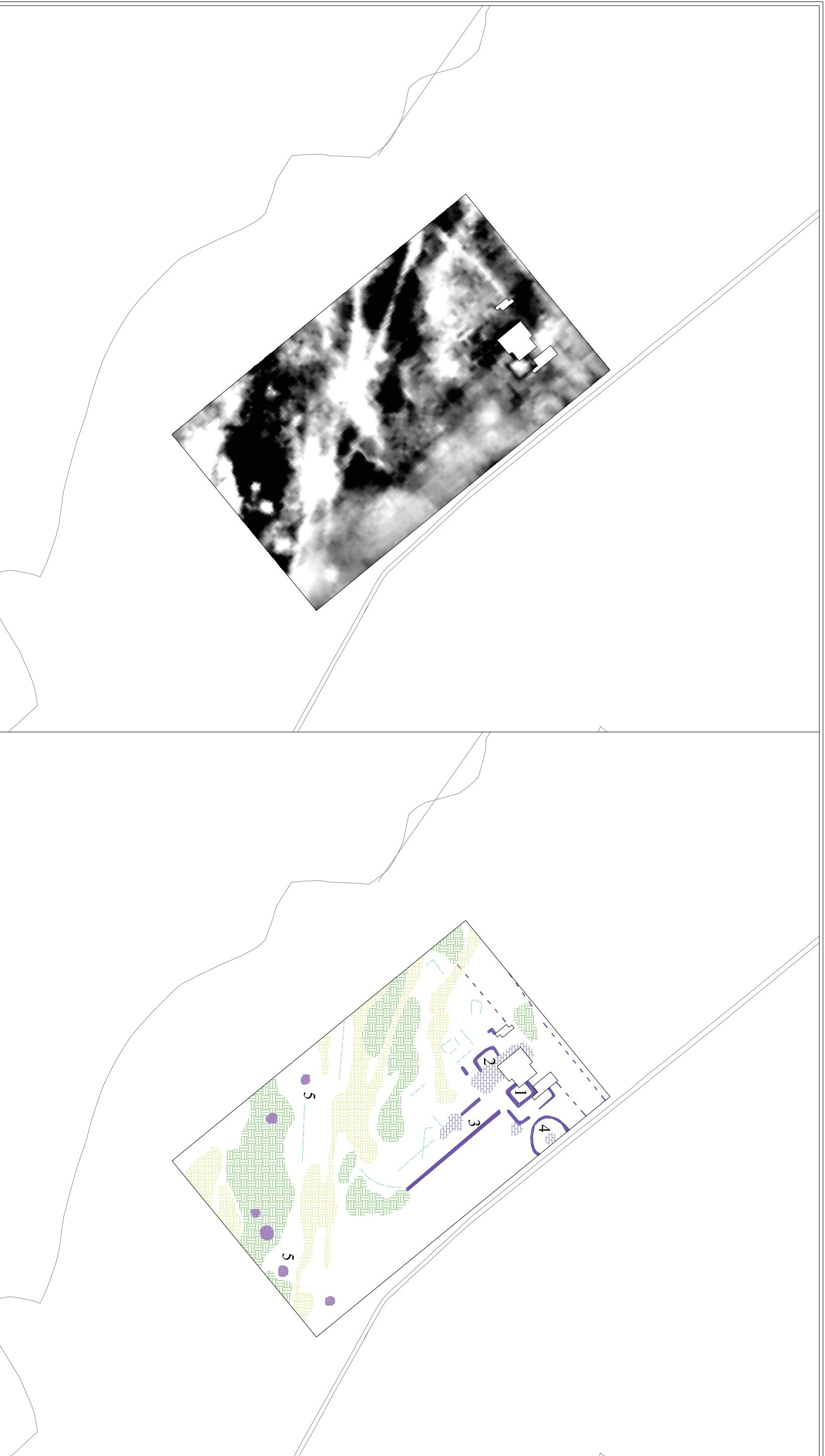
 Archaeology
 Increased Magnetic Response

 ?Archaeology
 Negative Response

 Trends
 ?Natural

 Pipe
 Ferrrous

GSB PROSPECTION Ltd.
 2008/31 Friar's Wash
 Summary Gradiometer Data
 Reproduced from the Ordnance Survey Map supplied by Time Team with the permission of the Controller of HMSO © Crown Copyright (AL100018665)
Figure 2



High Resistance -
Foundations

High Resistance -
Archaeology

Low Resistance -
Pits

Low Resistance -
Ditch

High Resistance -
Natural

Low Resistance -
Natural

High Resistance -
Trends

GSB PROSPECTION Ltd.
2008/31 Friar's Wash
Summary Resistance Data
Reproduced from the Ordnance Survey Map supplied by Time Team with the permission of the Controller of HMSO © Crown Copyright (AL100015865)

Figure 3

Appendix 1: Technical Information

Instrumentation

Fluxgate Gradiometer: Geoscan FM36/256 and Bartington Grad601-2

Both the Geoscan and Bartington instruments comprise two fluxgate sensors mounted vertically apart; the distance between the sensors on the former is 500mm, on the latter 1000mm. The gradiometers are carried by hand, with the bottom sensor approximately 100-300mm from the ground surface. At each survey station, the difference in the magnetic field between the two fluxgates is measured in nanoTesla (nT). The sensitivity of the instrument can be adjusted; for most archaeological surveys the most sensitive range (0.1nT) is used. The fluxgate gradiometer suppresses any diurnal or regional effects. Generally, features up to 1m deep may be detected by this method. Having two gradiometer units mounted laterally with a separation of 1000mm, the Bartington instrument can collect two lines of data per traverse.

Resistance Meter: Geoscan RM15

This instrument measures the electrical resistance of the earth, using a system of four electrodes (two current and two potential.) Depending on the arrangement of these electrodes an exact measurement of a specific volume of earth may be acquired. This resistance value may then be used to calculate the earth resistivity. The most common arrangement is the Twin Probe configuration which involves two pairs of electrodes (one current and one potential): one pair remain in a fixed position, whilst the other measures the resistance variations across a grid. The resistance is measured in ohms and, when calculated, resistivity is in ohm-metres. The resistance method as used for standard area survey employs a probe separation of 0.5m, which samples to a depth of approximately 0.75m. The nature of the overburden and underlying geology will cause variations in this depth.

GPR: Sensors & Software Noggin Smartcart

The Noggin system includes an onboard digital video logger (DVL III), 250 MHz or 500MHz antenna, an odometer wheel and battery. It is, therefore, a fully integrated system. The built-in software uses the integrated odometer to provide an accurate distance measurement to the response. The data are recorded in digital format and can be processed to produce depth slice maps, 2D sections or 3D cubes.

Display Options

XY Trace

This involves a line representation of the data. Each successive row of data is equally incremented in the Y axis, to produce a stacked profile effect. This display may incorporate a hidden-line removal algorithm, which blocks out lines behind the major peaks and can aid interpretation. The advantages of this type of display are that it allows the full range of the data to be viewed and shows the shape of the individual anomalies. The display may also be changed by altering the horizontal viewing angle and the angle above the plane. The output may be either colour or black and white.

Greyscale

This format divides a given range of readings into a set number of classes. Each class is represented by a specific shade of grey, the intensity increasing with value. All values above the given range are allocated the same shade (maximum intensity); similarly all values below the given range are represented by the minimum intensity shade. Similar plots can be produced in colour, either using a wide range of colours or by selecting two or three colours to represent positive and negative values. The assigned range (plotting levels) can be adjusted to emphasise different anomalies in the data-set.

Relief Plot

This is a method of display that creates a three dimensional effect by directing an imaginary light source on a given data set. Particular elements of the results are highlighted depending on the angle of strike of the light source. This display method is particularly useful when applied to resistance data to highlight subtle changes in resistance that might otherwise be obscured.

3D Surface Plot

This is similar to the XY trace, but in 3 dimensions. Each data point of a survey is represented in its relative position on the x and y axes and the data value is represented in the z axis. This gives a digital terrain, or topographic effect.

Radargram

Radar data comprise a record of reflection intensity against the time taken for the emitted energy to travel from the transmitter down to the reflector and back to the receiver. The resultant plot is effectively a vertical section through the ground along the line of the traverse, with time (depth) on the vertical axis, displacement on the horizontal axis and reflection intensity as a grey or colour scale.

Time Slice

If a number of radargrams are collected over a grid, or in conjunction with GPS data, it is possible to reconstruct the entire dataset into a 3D volume. This can then be resampled to compile 'plan' maps of response strength at increasing time (or depth) offsets, thus simplifying the visualisation of how anomalies vary beneath the surface across a survey area.

Data Processing

Zero Mean Traverse	This process which sets the background mean of each traverse within each grid to zero. The operation removes striping effects and edge discontinuities over the whole of the data set. It is usually only applied to gradiometer data.
Step Correction	When gradiometer data are collected in 'zig-zag' fashion, stepping errors can sometimes arise. These occur because of a slight difference in the speed of walking on the forward and reverse traverses. The result is a staggered effect in the data, which is particularly noticeable on linear anomalies. This process corrects these errors
Interpolation	When geophysical data are presented as a greyscale, each data point is represented as a small square. The resulting plot can sometimes have a 'blocky' appearance. The interpolation process calculates and inserts additional values between existing data points. The process can be carried out with points <i>along</i> a traverse (the <i>x</i> axis) and/or <i>between</i> traverses (the <i>y</i> axis) and results in a smoother greyscale image.
Despike	In resistance survey, spurious readings can occasionally occur, usually due to a poor contact of the probes with the surface. This process removes the spurious readings, replacing them with values calculated by taking the mean and standard deviation of surrounding data points. It is not usually applied to gradiometer data.
High Pass Filter	Carried out over the whole a resistance data-set, the filter removes low frequency, large scale spatial detail, such as that produced by broad geological changes. The result is to enhance the visibility of the smaller scale archaeological anomalies that are otherwise hidden within the broad 'background' change in resistance. It is not usually applied to gradiometer data.
GPR Filters	There are a wide range of GPR filters available and their application will vary from project to project. The most commonly used are: Dewow (removes low frequency, down-trace instrument noise); DC-Shift (re-establishes oscillation of the radar pulse around the zero point); Bandpass Filtering (suppresses frequencies outside of the antenna's peak bandwidth thus reducing noise); Background Removal (can remove ringing, instrument noise and minimize the near-surface 'coupling' effect); Migration (collapses hyperbolic tails back towards the reflection source).

Tie-in Techniques and Information

Tapes
A number of points on each survey grid are recorded by triangulating to at least two fixed points on the base map. If there is a lack of 'hard detail' in the mapping, some form of survey marker will be left <i>in-situ</i> for reference. NOTE: When re-establishing the grid (for excavation or other post-survey work) only data from the supplied tie-in diagram should be used and NOT the report figures.
Electronic Distance Measurers (EDM) / Total Stations (TST)
This type of instrument measures the distance and angle to features with reference to a fixed point. Where possible the EDM will be set up over a point that can be re-established with relative ease, e.g. over map detail, a survey marker or at a point measurable by tapes. Distances and angles to permanent points of reference and/or map detail are recorded as well as at least two points per survey grid. NOTE: When re-establishing the grid (for excavation or other post-survey work) only data from the supplied tie-in diagram should be used and NOT the report figures.
Global Positioning Systems (GPS)
Using a roving receiver unit, these systems record the longitude, latitude and altitude of a given point by triangulating between a network of satellites. For survey-grade measurements, the accuracy is refined by integrating data from a fixed base station or local reference network. In addition to grid points, elements of map detail are collected to assess the existing base-map accuracy and, in worst-case scenarios, use the data on a non-georeferenced map. If the supplied mapping is found to be inaccurate, it is sometimes necessary to shift the position of GPS points (keeping their relative positions fixed) within the site plan to correlate cartographic features with the 'real-world' co-ordinates; this should be considered when using GPS to re-establish an existing survey grid (see note below). It should be noted that the accuracy of any GPS-positioned point is dependent upon both the system and the satellite geometry at the time of survey. On projects where multiple contractors have used GPS, the possibility of compound errors between original survey grid creation, tie-in information and grid re-establishment should be borne in mind when positioning trenches over recorded anomalies. NOTE: If re-establishing the grid with a GPS (for excavation or other post-survey work), use only the co-ordinates recorded on the tie-in diagram or, if supplied, the GPS data file included on the Archive CD; relative positions in the report diagrams may be correct but absolute co-ordinates can vary if discrepancies in the base mapping have been encountered.

Terms Commonly used in the Interpretation of Results

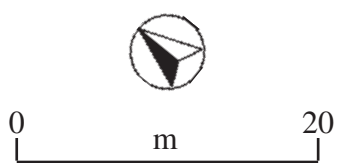
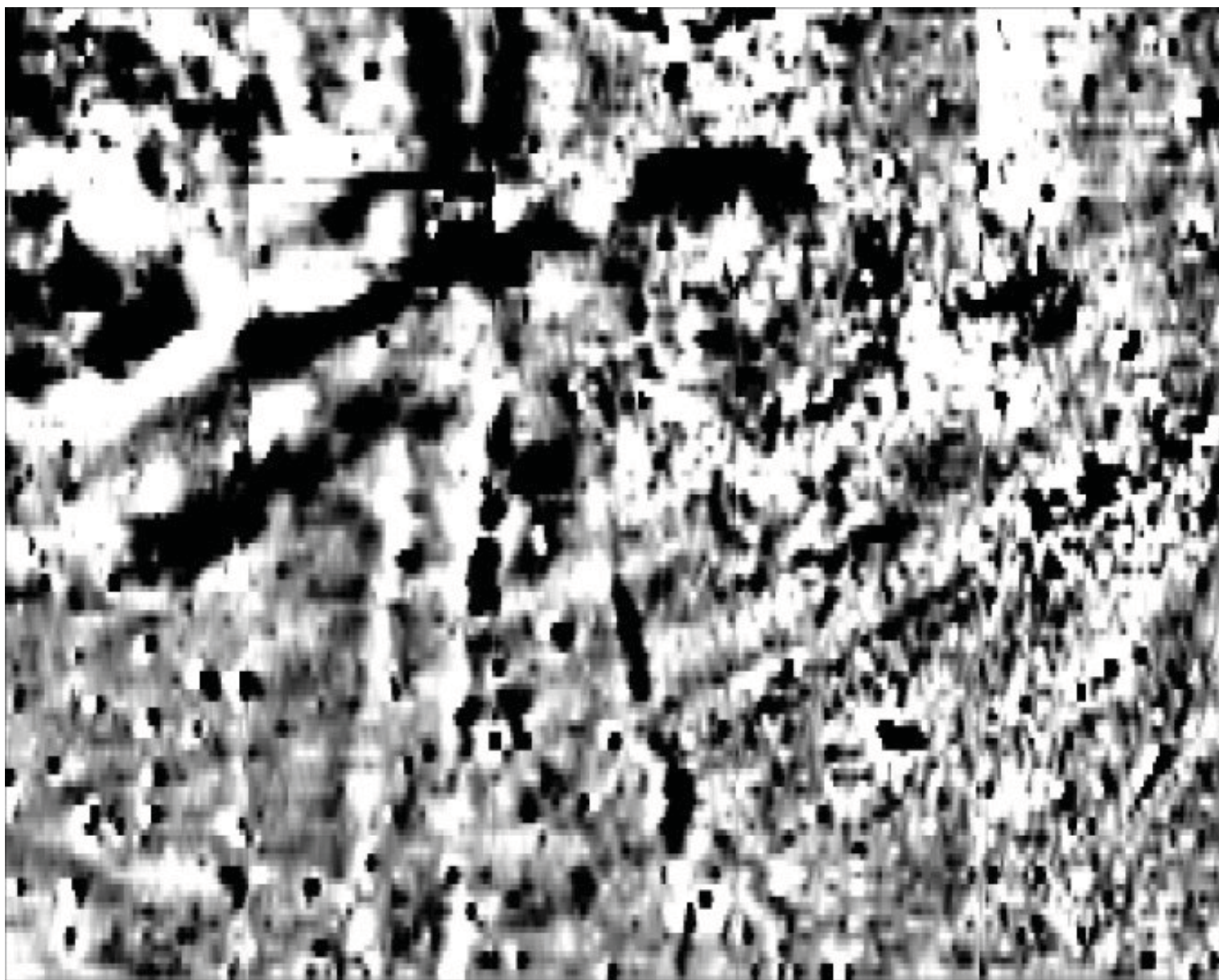
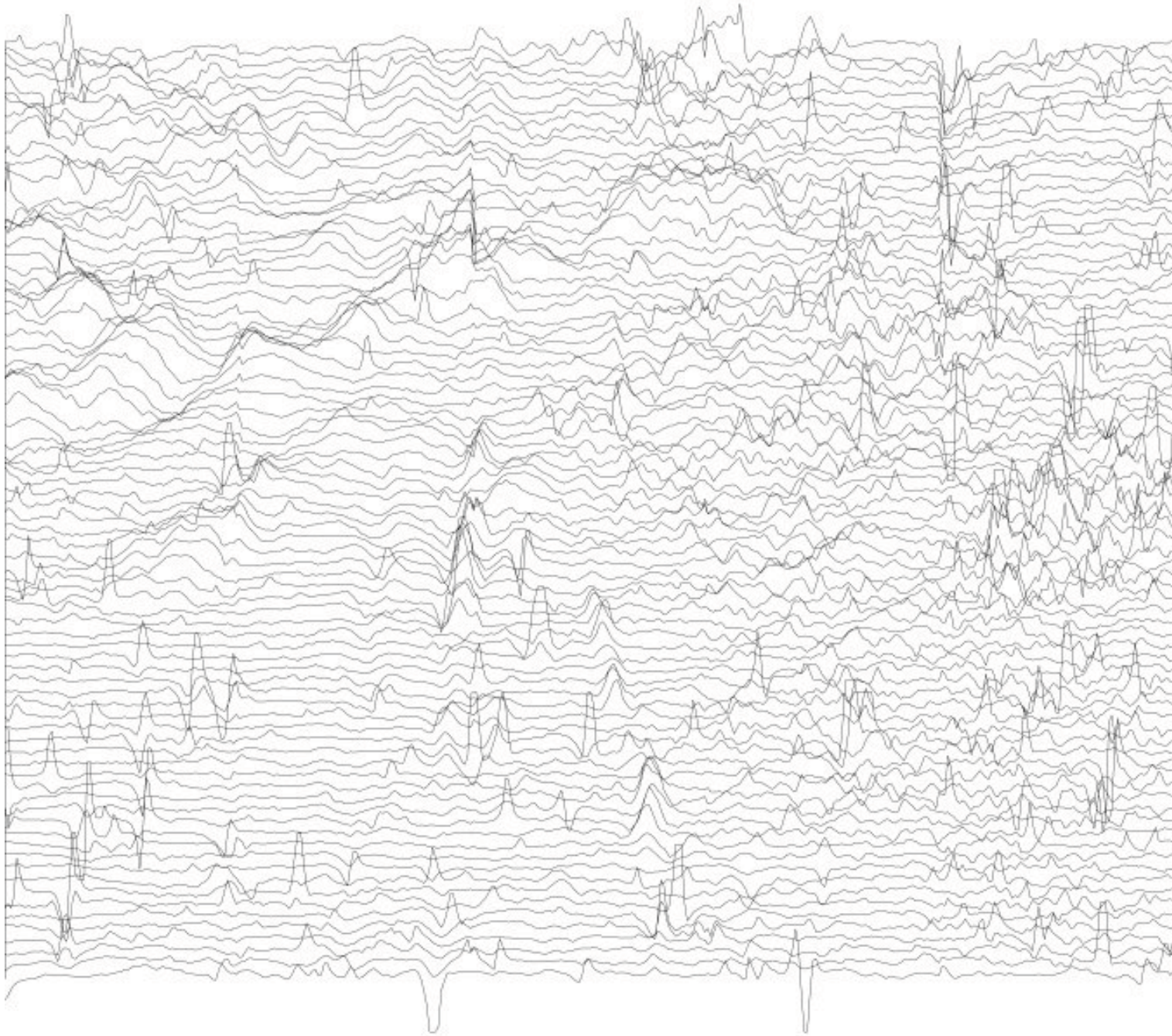
Magnetic

Archaeology	This term is used when the form, nature and pattern of the response are clearly or very probably archaeological. These anomalies, whilst considered anthropogenic, could be of any age.
? Archaeology	The interpretation of such anomalies is often tentative, with the anomalies exhibiting either weak signal strength or forming incomplete archaeological patterns. They may be the result of variable soil depth, plough damage or even aliasing as a result of data collection orientation.
Areas of Increased Magnetic Response	These responses show no visual indications on the ground surface and are considered to have some archaeological potential.
Industrial	Strong magnetic anomalies that, due to their shape and form or the context in which they are found, suggest the presence of kilns, ovens, corn dryers, metal-working areas or hearths. It should be noted that in many instances modern ferrous material can produce similar magnetic anomalies.
Natural	These responses form clear patterns in geographical zones where natural variations are known to produce significant magnetic distortions e.g. palaeochannels or magnetic gravels.
? Natural	These are anomalies that are likely to be natural in origin i.e. geological or pedological.
Ridge and Furrow	These are regular and broad linear anomalies that are presumed to be the result of ancient cultivation. In some cases the response may be the result of modern activity.
Ploughing Trend	These are isolated or grouped linear responses. They are normally narrow and are presumed modern when aligned to current field boundaries or following present ploughing.
Uncertain Origin	Often, anomalies (both positive and negative) will be recorded which stand out from the background magnetic variation yet show little to suggest an exact origin. This may be because the characteristics and distribution of the responses straddle the categories of “?Archaeology” and “?Natural” or that they are simply of an unusual form.
Trend	This is usually an ill-defined, weak, isolated or obscured linear anomaly of unknown cause or date.
Areas of Magnetic Disturbance	These responses are commonly found in places where modern ferrous or fired materials are present e.g. brick rubble. They are presumed to be modern.
Ferrous Response	This type of response is associated with ferrous material and may result from small items in the topsoil, larger buried objects such as pipes, or above ground features such as fence lines or pylons. Ferrous responses are usually regarded as modern. Individual burnt stones, fired bricks or igneous rocks can produce responses similar to ferrous material.

Resistance

Archaeology	High or low res responses are clearly or very probably archaeological. These anomalies, whilst considered anthropogenic, could be of any age.
? Archaeology	The interpretation of such anomalies is often tentative, with the anomalies exhibiting either weak signal strength or forming incomplete archaeological patterns. They may be the result of variable soil depth, plough damage or even aliasing as a result of data collection orientation.
Natural	These responses form clear patterns in geographical zones where natural variations are known to produce significant magnetic distortions e.g. palaeochannels or magnetic gravels.
? Natural	These are anomalies that are likely to be natural in origin i.e. geological or pedological.
? Landscaping / topography	These are regular and broad linear anomalies that are presumed to be the result of ancient cultivation. In some cases the response may be the result of modern activity.
Vegetation	These are isolated or grouped linear responses. They are normally narrow and are presumed modern when aligned to current field boundaries or following present ploughing.
Trend	This is usually an ill-defined, weak, isolated or obscured linear anomaly of unknown cause or date.

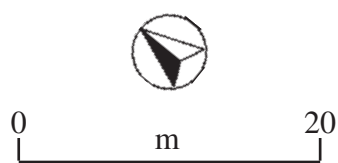
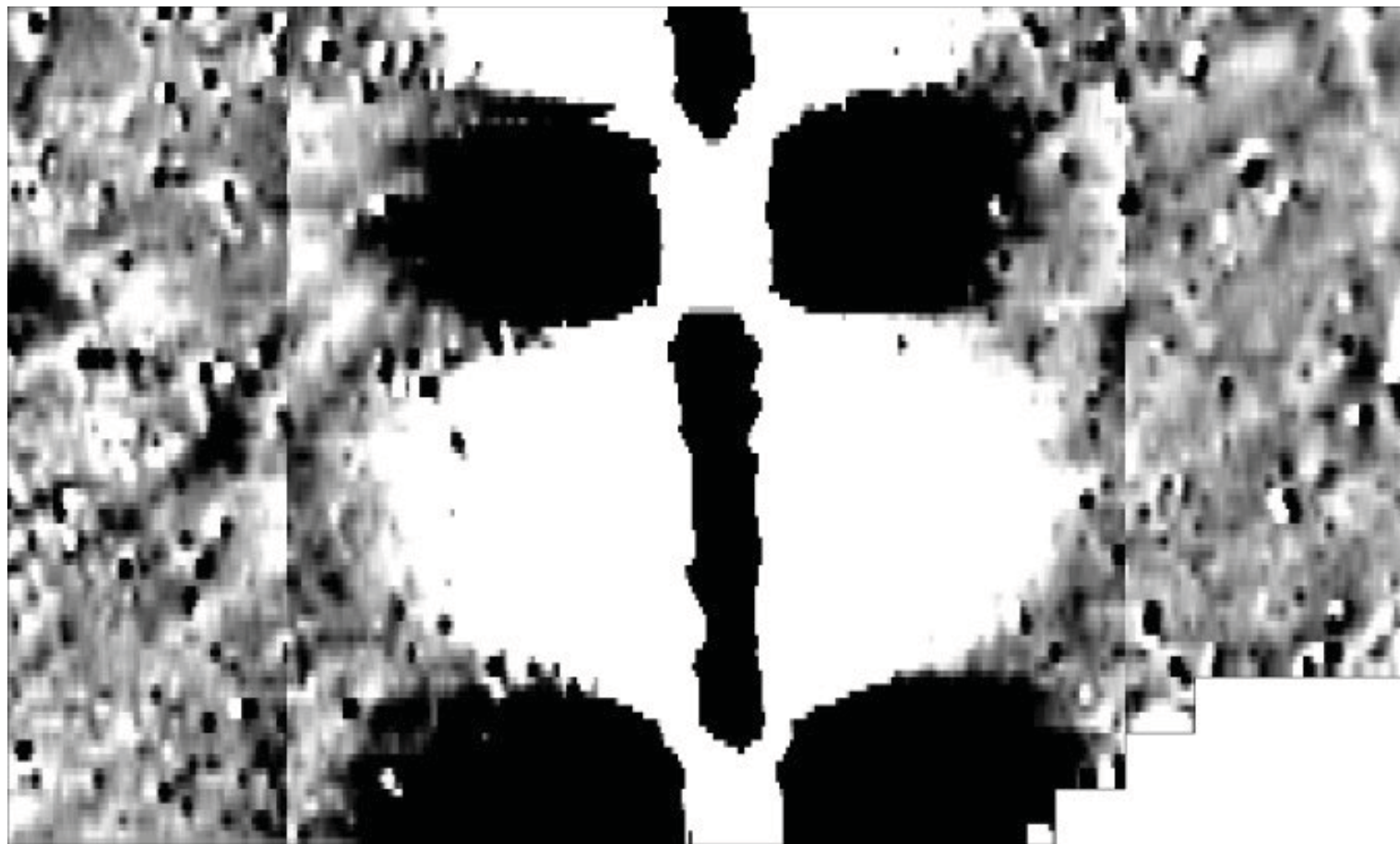
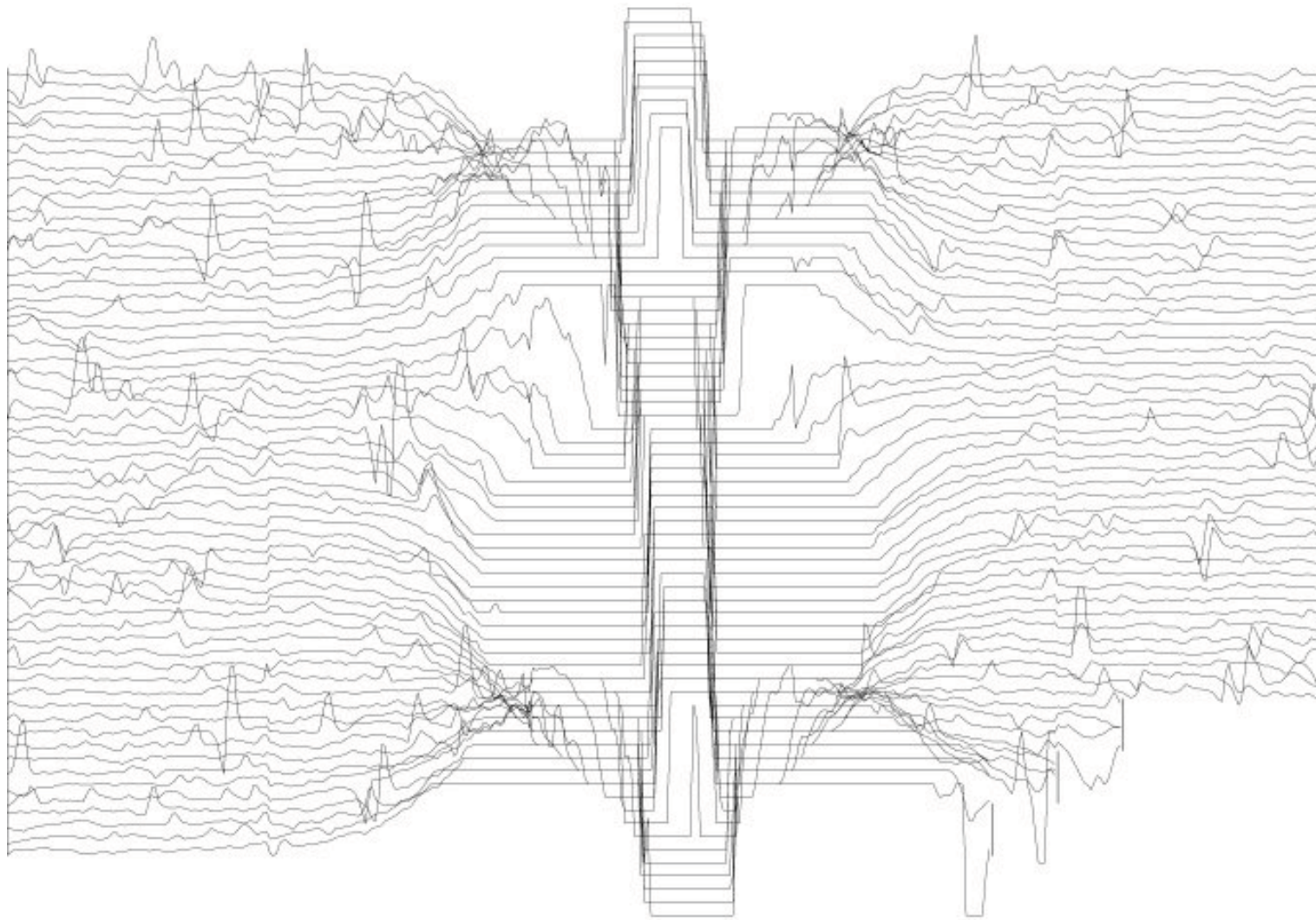
GPR	
Wall /Foundation/ /Vault /Culvert etc.	High amplitude anomaly definitions used when other evidence is available that supports a clear archaeological interpretation.
Archaeology	Anomalies whose form, nature and pattern indicate archaeology but where little or no supporting evidence exists. If a more precise archaeological interpretation is possible, for example the responses appear to respect known local archaeology, then this will be indicated in the accompanying text. As low amplitude responses are less obvious features it is unlikely that they would have a definitive categorisation.
? Archaeology	When the anomaly could be archaeologically significant, given its discrete nature, but where the distribution of the responses is not clearly archaeological. Interpretation of such anomalies is often tentative, exhibiting either little contrast or forming incomplete archaeological patterns.
Historic	Responses showing clear correlation with earlier map evidence.
?Historic	Responses relating to features not directly recorded on earlier maps but which appear to respect features that are. May form patterns suggestive of formal gardens, landscaping or footpaths.
Area of Anomalous Response	An area in which the response levels are very slightly elevated or diminished with respect to the 'background'. Where no obvious surface features or documentary evidence can explain this spread of altered reflectivity it is assumed to denote some kind of disturbance, though the origins could be of any age and either anthropogenic or natural. Possible explanations are changes in subsurface composition and groundwater 'ponding'.
Natural	Anomalies relating to natural sub-surface features as indicated by documentary sources, local knowledge or evidence on the surface.
?Natural	Responses forming patterns akin to subsoil/geological variations either attenuating or reflecting greater amounts of energy. An archaeological origin such as rubble spreads or robbed out remains cannot be dismissed.
Trend	An ill defined, weak or isolated linear anomaly of unknown cause or date.
Modern	Reflections that indicate features such as services, rebar or modern cellars correlating with available evidence (maps, communications with the client, alignment of drain covers etc.).
?Modern	Reflections appearing to indicate buried services but where there is no supporting evidence. Also applies to responses which form patterns, or are at a depth which suggests a modern origin. An archaeological source cannot be completely dismissed.
Surface	Responses clearly due to surface discontinuities, the effects of which may be seen to 'ring' down through radargrams and so incorrectly appearing in the deeper time-slices.



15 nT



GSB Prospection Ltd.
2008/31 Friar's Wash
Magnetic Data - Area 1A
Figure A1



15 nT

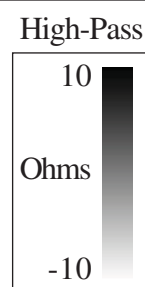
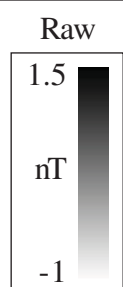
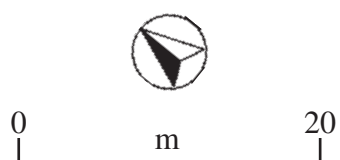


GSB Prospection Ltd.
2008/31 Friar's Wash
Magnetic Data - Area 1B
Figure A2

Raw Data

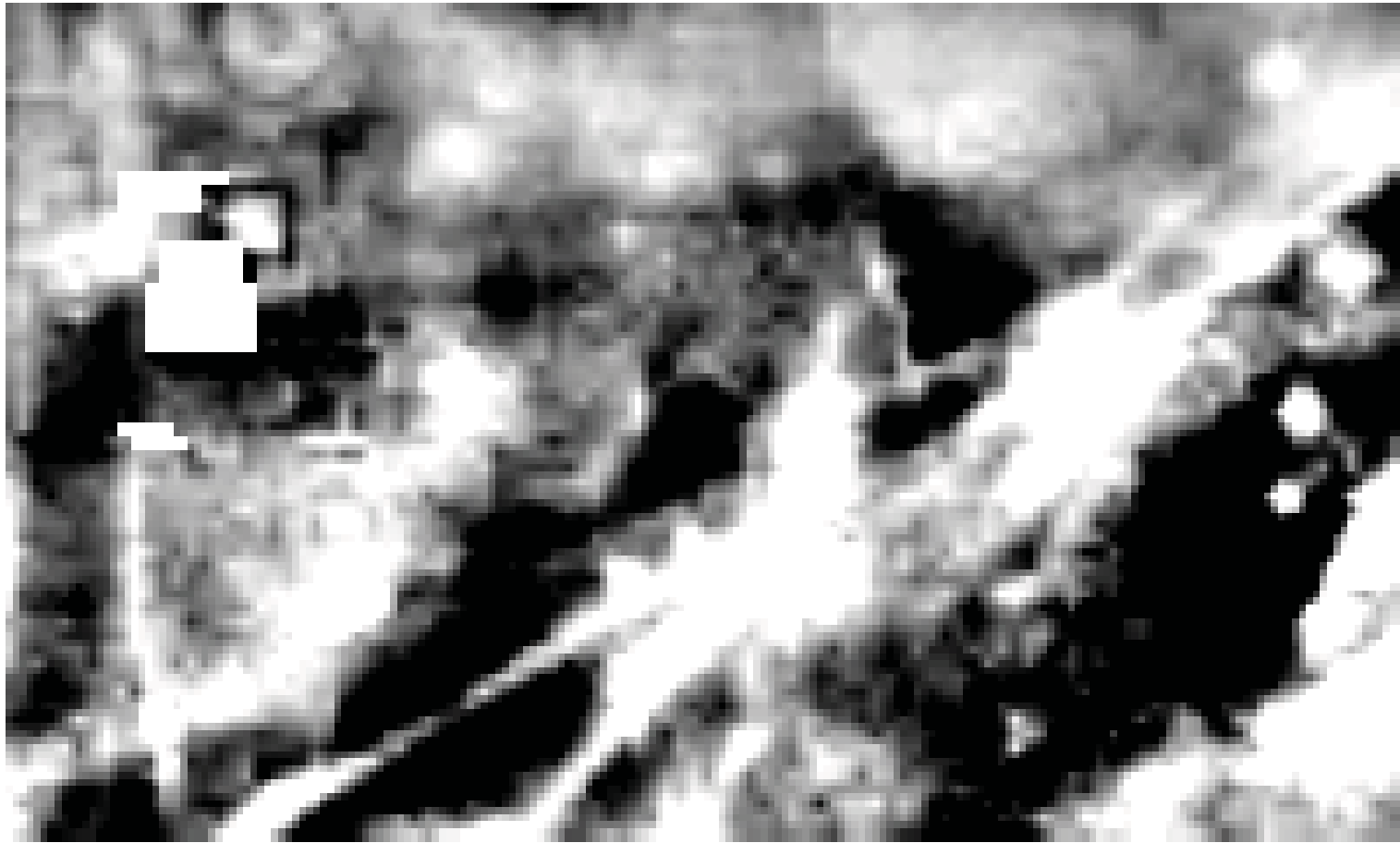


High Pass Filtered Data

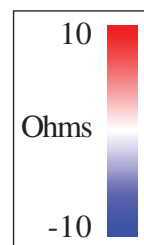
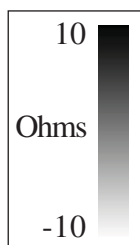
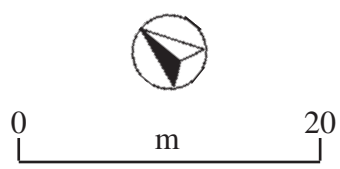
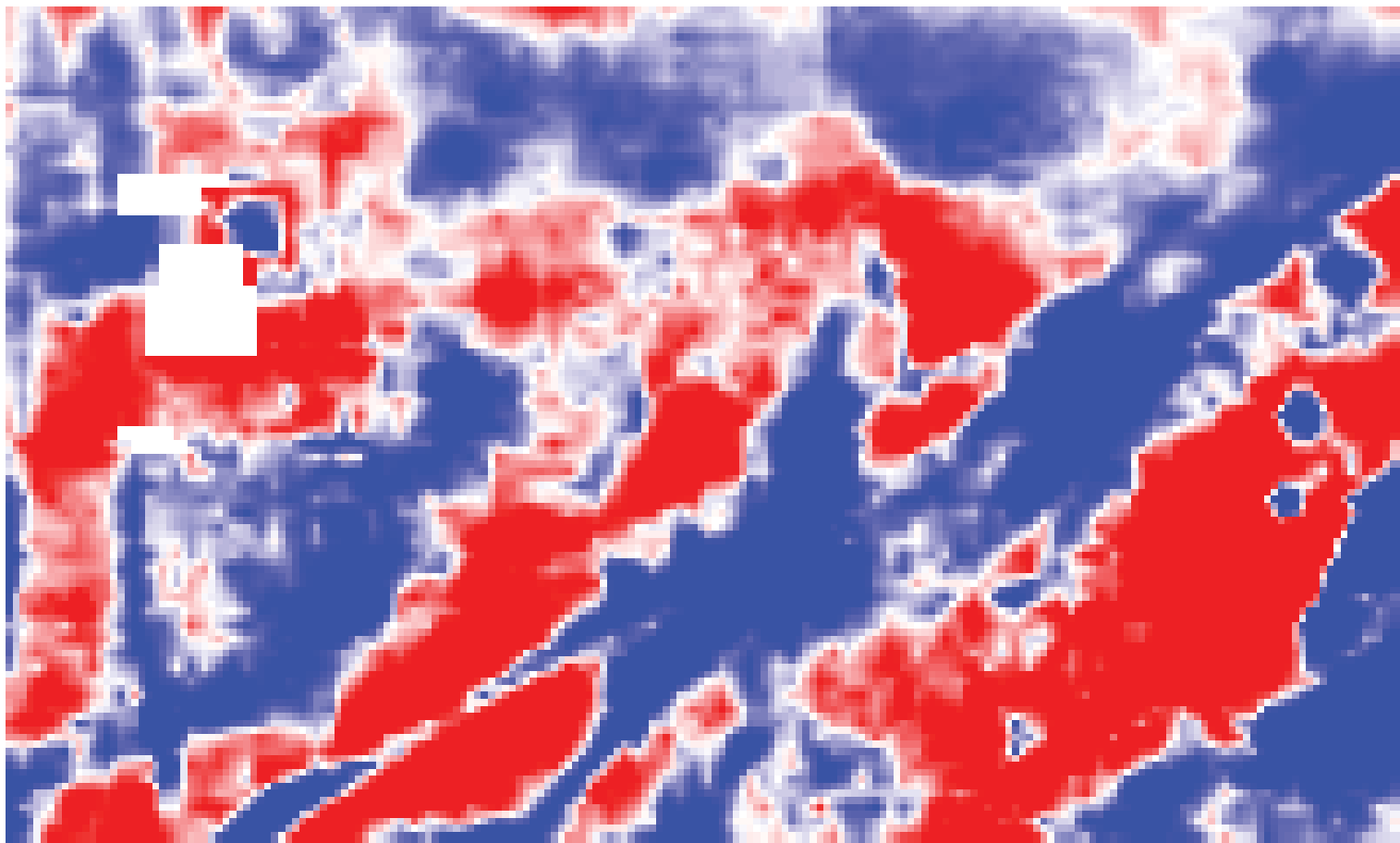


GSB Prospection Ltd.
2008/31 Friar's Wash
Resistance Data
Figure A3

Interpolated Data



Interpolated Data



GSB Prospection Ltd.
2008/31 Friar's Wash
Resistance Data
Figure A4