

PRELIMINARY

Amendments

Issue No.	Date	Description
-	-	-
-	-	-

© Stratascan Ltd - 2013

Plotting parameters

Maximum +100nT (red)
Minimum -100nT (blue)

Client
SOUTH WEST ARCHAEOLOGY LTD

Project Title Job No. J5833
GEOPHYSICAL SURVEY - FALMOUTH

Subject
COLOUR PLOT OF GRADIOMETER DATA SHOWING EXTREME VALUES

STRATASCAN™
GEOPHYSICS FOR ARCHAEOLOGY AND ENGINEERING

VINEYARD HOUSE T: 01684 592266
UPTON UPON SEVERN E: info@stratascan.co.uk
WR8 0SA www.stratascan.co.uk

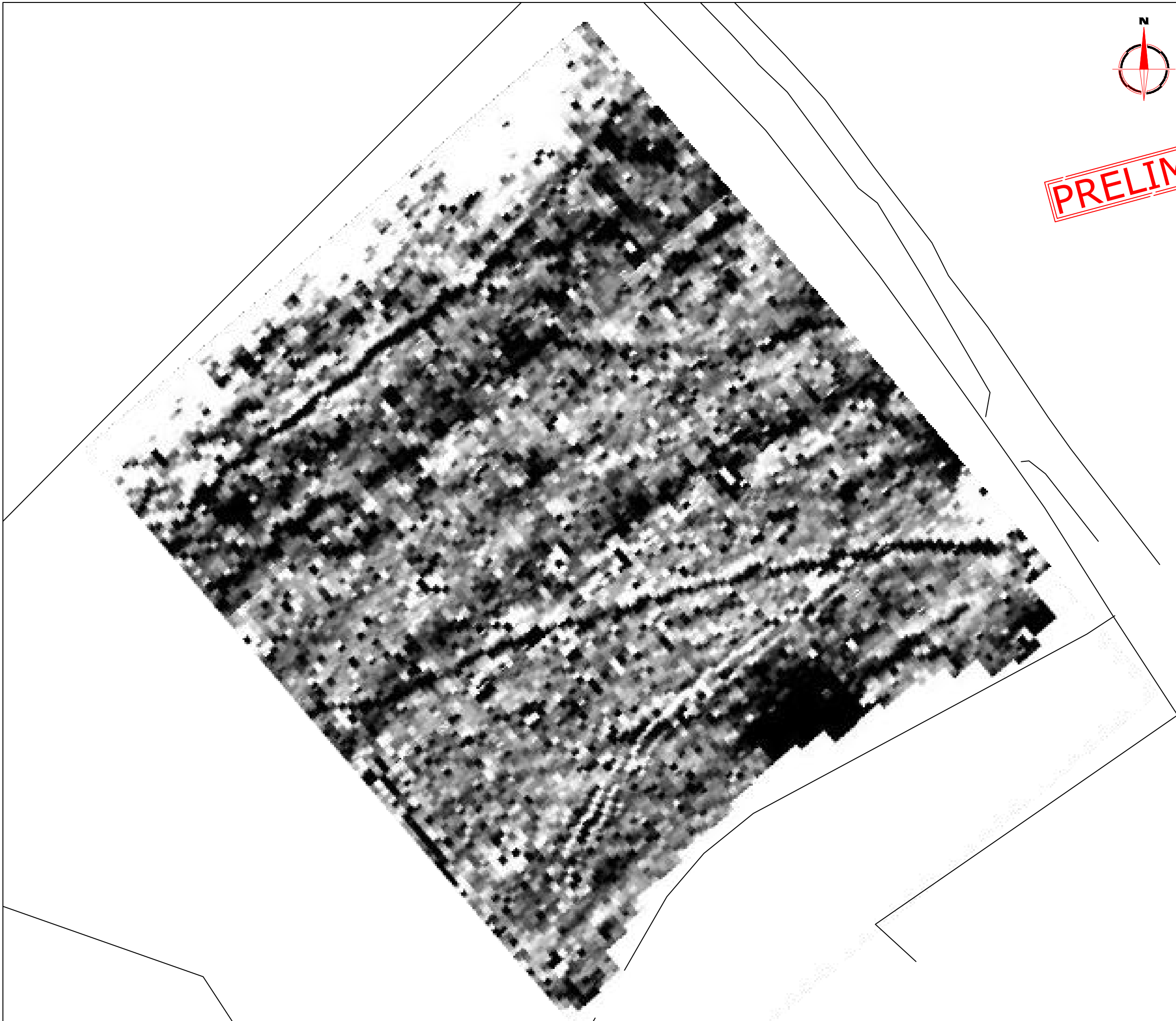
EUROPEAN GPR ASSOCIATION

SUMO SURVEYS SUMO GROUP MEMBER

ims ISO 9001 certified | UKAS ISO 9001 certified | ims ISO 14001 certified | UKAS ISO 14001 certified

Scale 1:500 0m 5 10 15 20 25m

Plot A3	Checked by DGE	Issue No. P1
Survey date SEP 2013	Drawn by BPM	Figure No. A



PRELIMINARY

Amendments

Issue No.	Date	Description
-	-	-
-	-	-

© Stratascan Ltd - 2013

Plotting parameters

Maximum +2nT (black)
Minimum -2nT (white)

Client
SOUTH WEST ARCHAEOLOGY LTD

Project Title Job No. J5833
GEOPHYSICAL SURVEY - FALMOUTH

Subject
PLOT OF MINIMALLY PROCESSED GRADIOMETER DATA

STRATASCAN™
GEOPHYSICS FOR ARCHAEOLOGY AND ENGINEERING

VINEYARD HOUSE T: 01684 592266
UPTON UPON SEVERN E: info@stratascan.co.uk
WR8 0SA www.stratascan.co.uk

EUROPEAN GPR ASSOCIATION

SUMO GROUP MEMBER

ims ISO 9001 certified **UKAS ISO 9001** **ims ISO 14001 certified** **UKAS ISO 14001**

Scale **1:500** 0m 5 10 15 20 25m

Plot A3	Checked by DGE	Issue No. P1
Survey date SEP 2013	Drawn by BPM	Figure No. B



PRELIMINARY

Amendments		
Issue No.	Date	Description
-	-	-
-	-	-
© Stratascan Ltd - 2013		
KEY		
PROBABLE ARCHAEOLOGY		
	Positive anomaly / weak positive anomaly - probable cut feature of archaeological origin	
	Negative anomaly / weak negative anomaly - probable bank or earthwork of archaeological origin	
	Moderate strength discrete anomaly - probable thermoremanent feature	
	Widely spaced curving parallel linear anomalies - probably related to ridge-and-furrow	
POSSIBLE ARCHAEOLOGY		
	Positive anomaly / weak positive anomaly - possible cut feature of archaeological origin	
	Negative anomaly / weak negative anomaly - possible bank or earthwork of archaeological origin	
	Moderate strength discrete anomaly - possible thermoremanent feature	
	Magnetic spike - probable ferrous object	
OTHER ANOMALIES		
	Closely spaced parallel linear anomalies - probably related to agricultural activity such as ploughing	
	Linear anomaly - probably related to pipe, cable or other modern service	
	Linear anomaly - possibly related to land drain	
	Magnetic disturbance associated with nearby metal object such as service or field boundary	
	Strong magnetic debris - possible disturbed or made ground	
	Scattered magnetic debris	
	Area of amorphous magnetic variation - probable natural (e.g. geological or pedological) origin	
Client		
SOUTH WEST ARCHAEOLOGY LTD		
Project Title		Job No. J5833
GEOPHYSICAL SURVEY - FALMOUTH		
Subject		
ABSTRACTION AND INTERPRETATION OF GRADIOMETER ANOMALIES		
STRATASCAN™		
GEOPHYSICS FOR ARCHAEOLOGY AND ENGINEERING		
VINEYARD HOUSE		T: 01684 592266
UPTON UPON SEVERN		E: info@stratascan.co.uk
WR8 0SA		www.stratascan.co.uk
Scale		
1:500		
Plot	Checked by	Issue No.
A3	DGE	P1
Survey date	Drawn by	Figure No.
SEP 2013	BPM	C