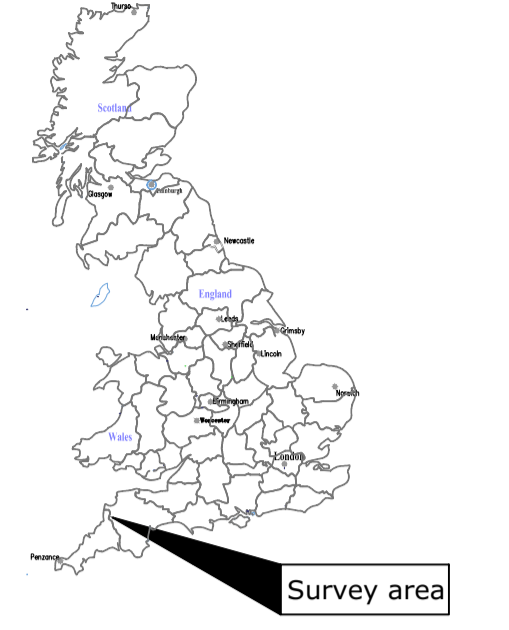


**Amendments**

Issue No.	Date	Description
-	-	-
-	-	-
© Stratascan Ltd - 2013		



Site centred on NGR SX 380 986

**REFERENCING INFORMATION**

A-B	90m	A-1	95.80m	A-2	107.23m
A-3	164.35m	B-1	149.49m	B-2	55.06m
B-3	100.35m				
C-D	330m	C-3	131.79m	C-4	235.46m
C-5	537.13m	D-3	377.22m	D-4	199.90m
D-5	241.77m				
E-F	150m	E-3	405.45m	E-4	215.54m
E-5	202.91m	F-3	482.99m	F-4	270.24m
F-5	58.87m				
G-H	30m	G-5	30.24m	G-6	60.08m
G-7	294.49m	H-5	42.38m	H-6	37.05m
H-7	304.19m				
I-J	210m	I-8	45.81m	I-9	144.89m
I-10	152.45m	J-8	255.10m	J-9	268.74m
J-10	198.84m				

A-B Base line  
1, 2, 3 Referencing points

Job No. J6172

Client SOUTH WEST ARCHAEOLOGY

Project Title SWINGDON FARM, ASHWATER, DEVON

Subject SITE LOCATION, SURVEY AREA & REFERENCING

**STRATASCAN**  
GEOPHYSICS FOR ARCHAEOLOGY AND ENGINEERING

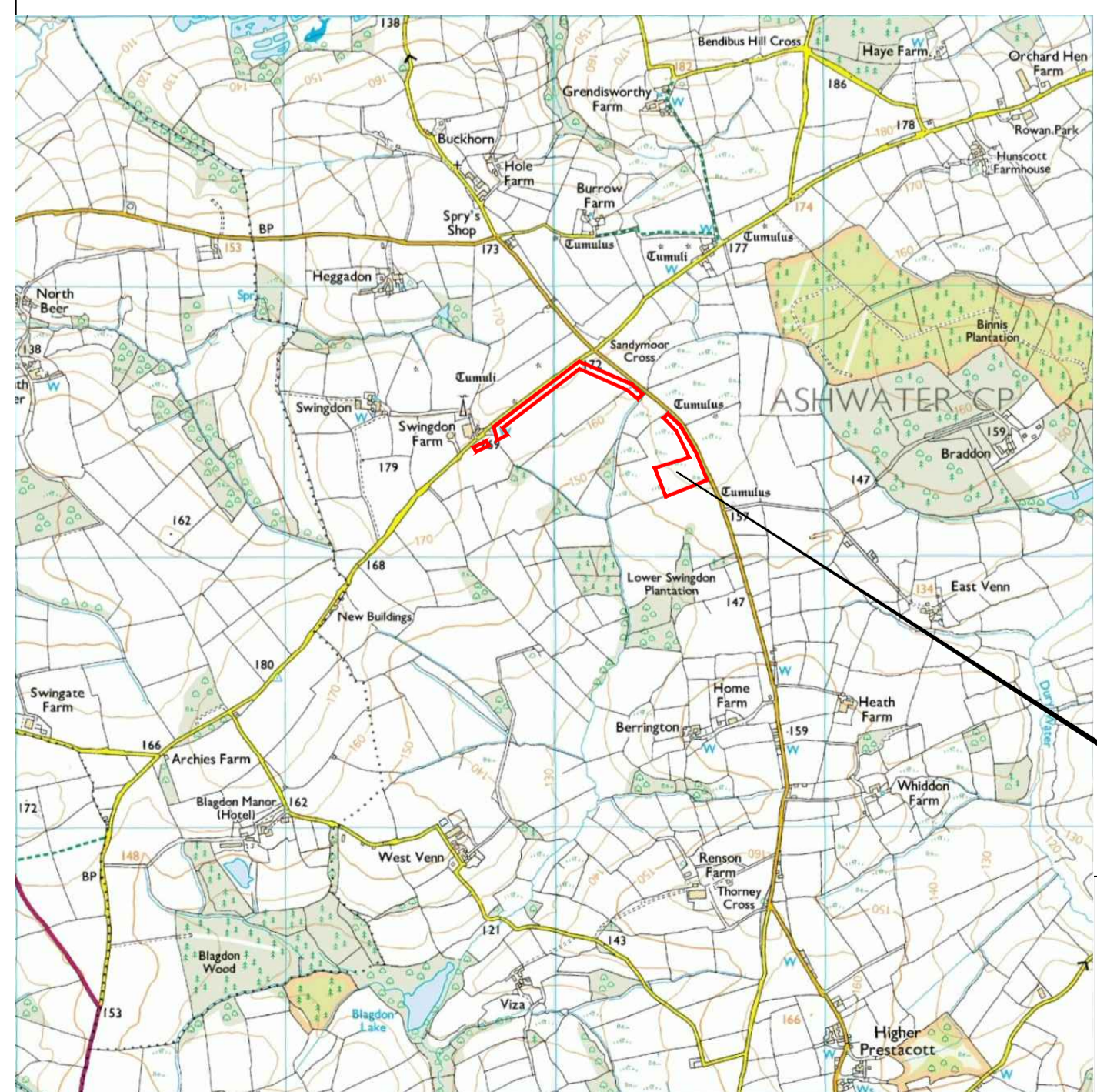
VINEYARD HOUSE  
UPTON UPON SEVERN  
WR8 0SA

T: 01684 592266  
E: info@stratascan.co.uk  
www.stratascan.co.uk

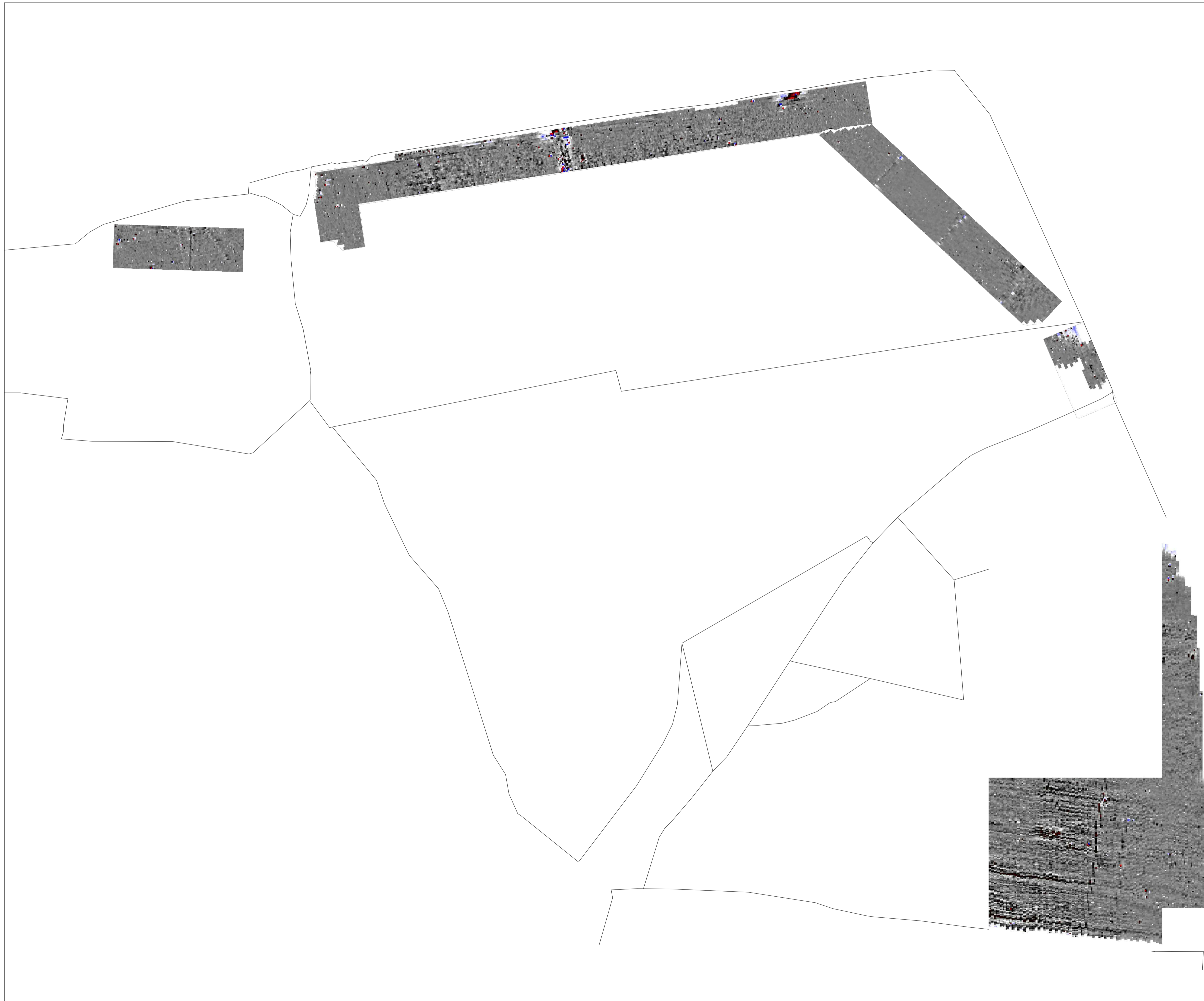


Scale 1:1250  
0m 10 20 30 40 50 60 70 80m

Plot A1	Checked by PPB	Issue No. 01
Date DEC 13	Drawn by TR	Figure No. 01



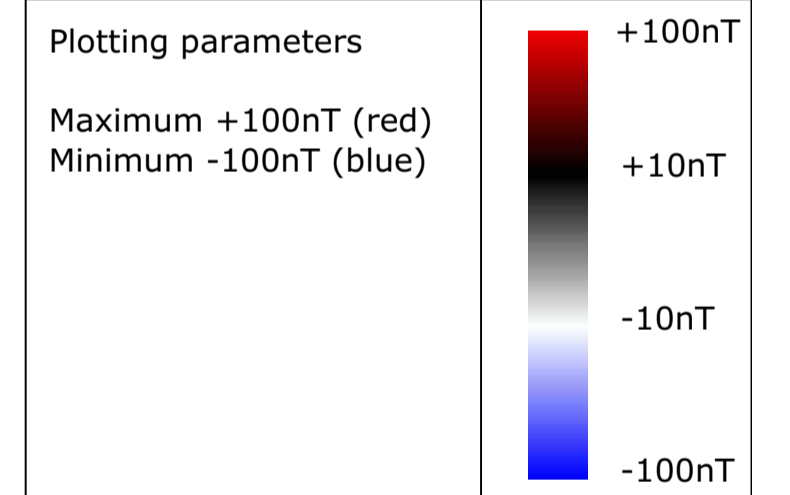
Reproduced from Ordnance Survey's 1:25 000 map of 1998 with the permission of the controller of Her Majesty's Stationary Office. Crown Copyright reserved. Licence No: AL 50125A  
Licencee: Stratascan Ltd, Vineyard House, Upton Upon Severn, WR8 0SA  
OS 100km square = SX



**Amendments**

Issue No.	Date	Description
-	-	-
-	-	-

© Stratascan Ltd - 2013



Job No. J6172

Client  
**SOUTH WEST ARCHAEOLOGY**

Project Title  
**SWINGDON FARM,  
ASHWATER, DEVON**

Subject  
**COLOUR PLOT OF MINIMALLY  
PROCESSED GRADIOMETER  
DATA SHOWING EXTREME  
VALUES**

**STRATASCAN™**  
GEOPHYSICS FOR ARCHAEOLOGY  
AND ENGINEERING  
VINEYARD HOUSE T: 01684 592266  
UPTON UPON SEVERN E: info@stratascan.co.uk  
WR8 0SA www.stratascan.co.uk



Scale 0m 10 20 30 40 50 60 70 80m  
1:1250

Plot <b>A1</b>	Checked by <b>PPB</b>	Issue No. <b>01</b>
Date <b>DEC 13</b>	Drawn by <b>TR</b>	Figure No. <b>02</b>



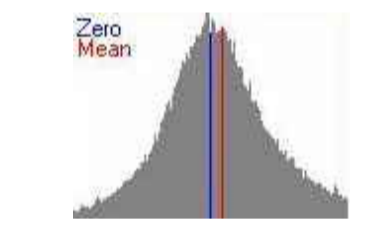
**Amendments**

Issue No.	Date	Description
-	-	-
-	-	-

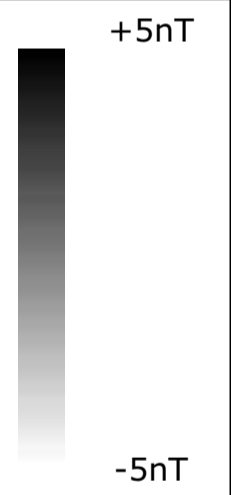
© Stratascan Ltd - 2013

**Plotting parameters**

Maximum +5nT (black)  
Minimum -5nT (white)



-5nT      0nT      +5nT



Job No. J6172

Client  
**SOUTH WEST ARCHAEOLOGY**

Project Title  
**SWINGDON FARM,  
ASHWATER, DEVON**

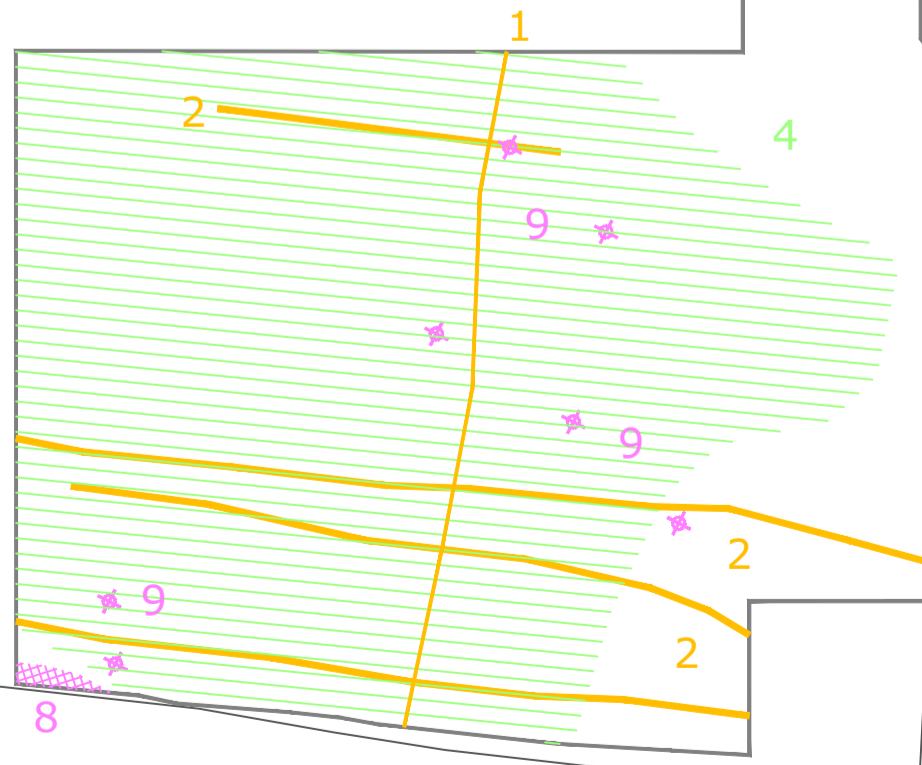
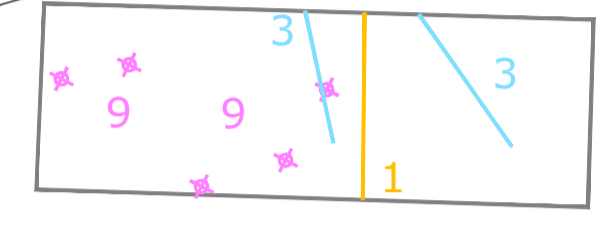
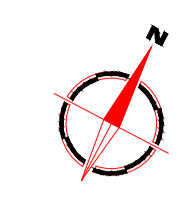
Subject  
**PLOT OF MINIMALLY  
PROCESSED GRADIOMETER  
DATA**

**STRATASCAN™**  
GEOPHYSICS FOR ARCHAEOLOGY  
AND ENGINEERING  
VINEYARD HOUSE T: 01684 592266  
UPTON UPON SEVERN E: info@stratascan.co.uk  
WR8 0SA www.stratascan.co.uk



Scale 0m 10 20 30 40 50 60 70 80m  
**1:1250**

Plot <b>A1</b>	Checked by <b>PPB</b>	Issue No. <b>01</b>
Date <b>DEC 13</b>	Drawn by <b>TR</b>	Figure No. <b>03</b>



Amendments		
Issue No.	Date	Description
-	-	-
-	-	-
© Stratascan Ltd - 2013		

KEY	
<b>PROBABLE ARCHAEOLOGY</b>	
	Positive anomaly / weak positive anomaly - probable cut feature of archaeological origin
	Negative anomaly / weak negative anomaly - probable bank or earthwork of archaeological origin
	Moderate strength discrete anomaly - probable thermoremanent feature
	Widely spaced curving parallel linear anomalies - probably related to ridge-and-furrow
<b>POSSIBLE ARCHAEOLOGY</b>	
	Positive anomaly / weak positive anomaly - possible cut feature of archaeological origin
	Negative anomaly / weak negative anomaly - possible bank or earthwork of archaeological origin
	Moderate strength discrete anomaly - possible thermoremanent feature
<b>OTHER ANOMALIES</b>	
	Closely spaced parallel linear anomalies - probably related to agricultural activity such as ploughing
	Linear anomaly - probably related to pipe, cable or other modern service
	Scattered magnetic debris related to a former field boundary present on available mapping until 1992
	Magnetic disturbance associated with nearby metal object such as service or field boundary
	Strong magnetic debris - possible disturbed or made ground
	Scattered magnetic debris
	Area of amorphous magnetic variation - probable natural (e.g. geological or pedological) origin
	Magnetic spike - probable ferrous object

Job No. J6172

Client

**SOUTH WEST ARCHAEOLOGY**

Project Title

**SWINGDON FARM,  
ASHWATER, DEVON**

Subject

**INTERPRETATION**

**STRATASCAN™**  
GEOPHYSICS FOR ARCHAEOLOGY  
AND ENGINEERING  
VINEYARD HOUSE T: 01684 592266  
UPTON UPON SEVERN E: info@stratascan.co.uk  
WR8 0SA www.stratascan.co.uk



Scale 0m 10 20 30 40 50 60 70 80m  
1:1250

Plot <b>A1</b>	Checked by <b>PPB</b>	Issue No. <b>01</b>
Date <b>DEC 13</b>	Drawn by <b>TR</b>	Figure No. <b>04</b>