

Devon County Council Historic Environment Record

Civil Parish & District: Marwood, North Devon	National Grid Reference SS 5643 4184	Number:
Subject: Evaluation trenching on land at Collacott Farm, Muddiford, Devon		Photo attached? YES
Planning Application no: 56813 (new no. Yet to be assigned)	Recipient museum: Museum of Barnstaple and North Devon	
OASIS ID: southwes1-173590	Museum Accession no: to be obtained	
Contractor's reference number/code: MCF14	Dates fieldwork undertaken: 16 th March 2014	
<p>Description of works. An archaeological evaluation was undertaken by South West Archaeology Ltd. (SWARCH) at the request of Gail Watt of Energy Law Unlimited LLP (the Agent) on behalf of Mr Richard Anthony Dallyn (the Client), prior to the development of an anaerobic digestion facility on land at Collacott Farm, Muddiford, Devon (Figure 1). This work was undertaken by Dr B. Morris on 16th March 2014 in accordance with a WSI drawn up in consultation with Stephen Reed of the Devon County Historic Environment Team.</p> <p>The proposed development lies in the immediate field east of Collacott Farm. Collacott farm is about 6.5km south-west of Ilfracombe. The archaeological potential of the site is demonstrated by the presence of prehistoric funerary monuments just over 600m to the east and prehistoric and possible medieval activity on land to the north at Stowford Farm Meadows. Collacott itself was first mentioned in the early 14th century. Groundworks associated with the development might have affected archaeological deposits associated with those in the surrounding landscape.</p> <p>Two evaluation trenches; Trench 1, 26.5m long by 1.6m wide; and Trench 2, 28m long and 1.6m wide (see Figures 1-4) were excavated by a JCB using a toothless grading bucket under archaeological supervision. The trenches were positioned roughly east-west across the development area. The topsoil consisted of turf and a light grey, clay-silt, overlaying a peaty topsoil in Trench 1 (up to 0.60m deep in Trench 1 and 0.40m deep in Trench 2). This topsoil overlaid the natural soil; a blue-grey shillet, decayed in places to a silty-clay.</p> <p>The evaluation revealed seven linear features; all field drains or service trenches aligned roughly north-east by south-west of varying widths. Some were stoney drains and some contained four inch ceramic pipe. A tree-throw was also revealed in Trench 2. The only other archaeological feature exposed was an irregular posthole in Trench 2. Posthole [209] was a sub-ovoid feature with steep-near vertical sides and an irregular-flattish base (0.34-0.44m across and 0.13m deep) (see Figures 4-6). It contained a single fill, (210), a well consolidated, mid grey, firm clay-silt with common small charcoal inclusions and occasional small sub-angular shillet fragments. No finds were recovered from posthole [209] and the feature remains undated. A sample of Fill (210) was retained.</p> <p>The only finds encountered in the evaluation were fragments of land drains, which were discarded on site.</p> <p>No significant archaeological features or deposits were encountered.</p>		
<p>A plan as well as any other relevant drawings must be attached showing the location and extent of site, areas investigated and features exposed.</p>		
Recorder: J. Bampton		Date sent to HER: 24/04/2014

Please email completed form to: archaeol@devon.gov.uk or post to County Archaeology Service, Environment Directorate, Matford Lane Offices, County Hall, Topsham Road, Exeter EX2 4QW. Information recorded on this form will be added to the Historic Environment Record, and made available to all researchers.

Any plans or photographs embedded within or attached to this form remain the copyright © of the recorder, and must not be reproduced in any publication without the explicit consent of the copyright holder.

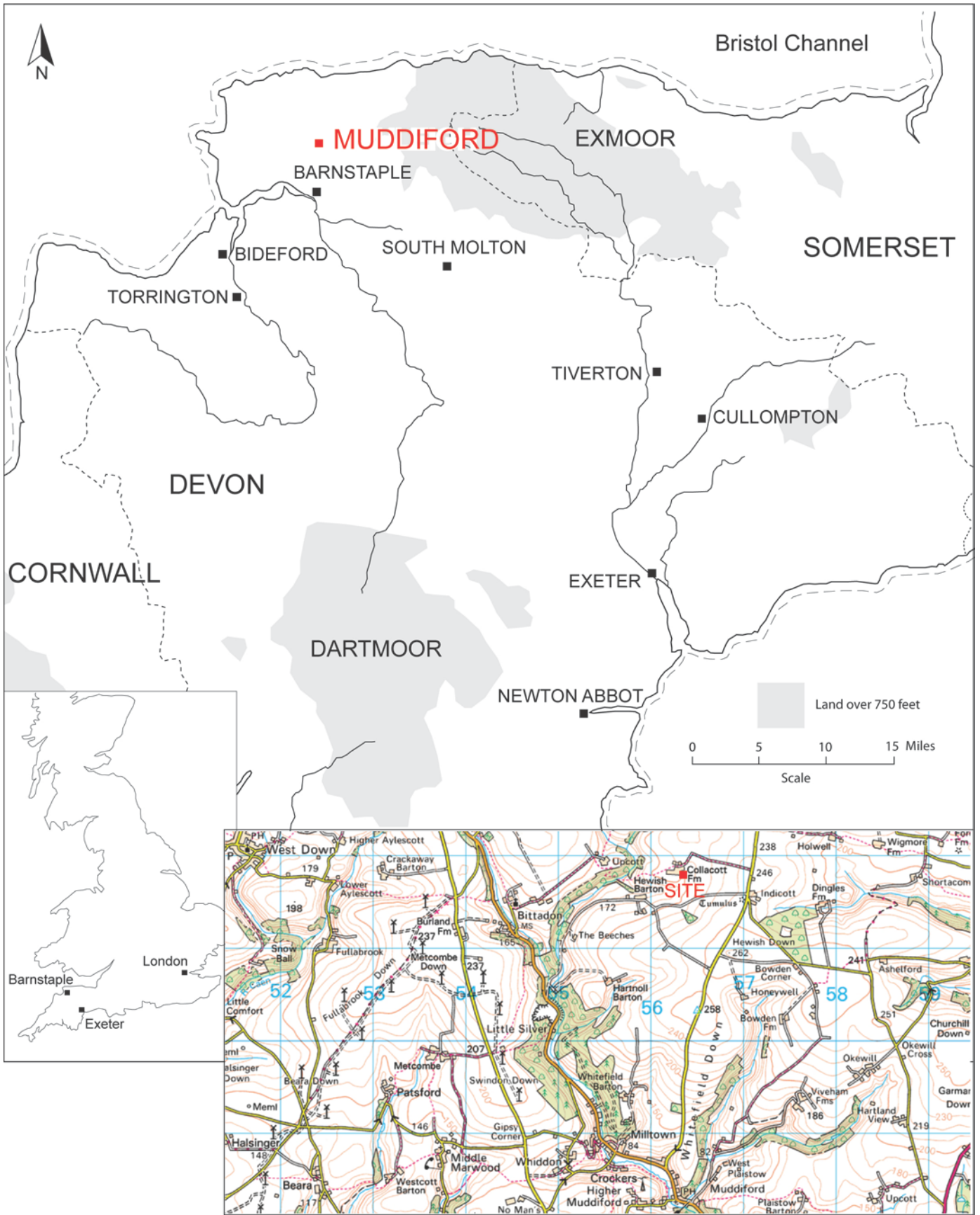


Figure 1: Location of site (indicated in red).

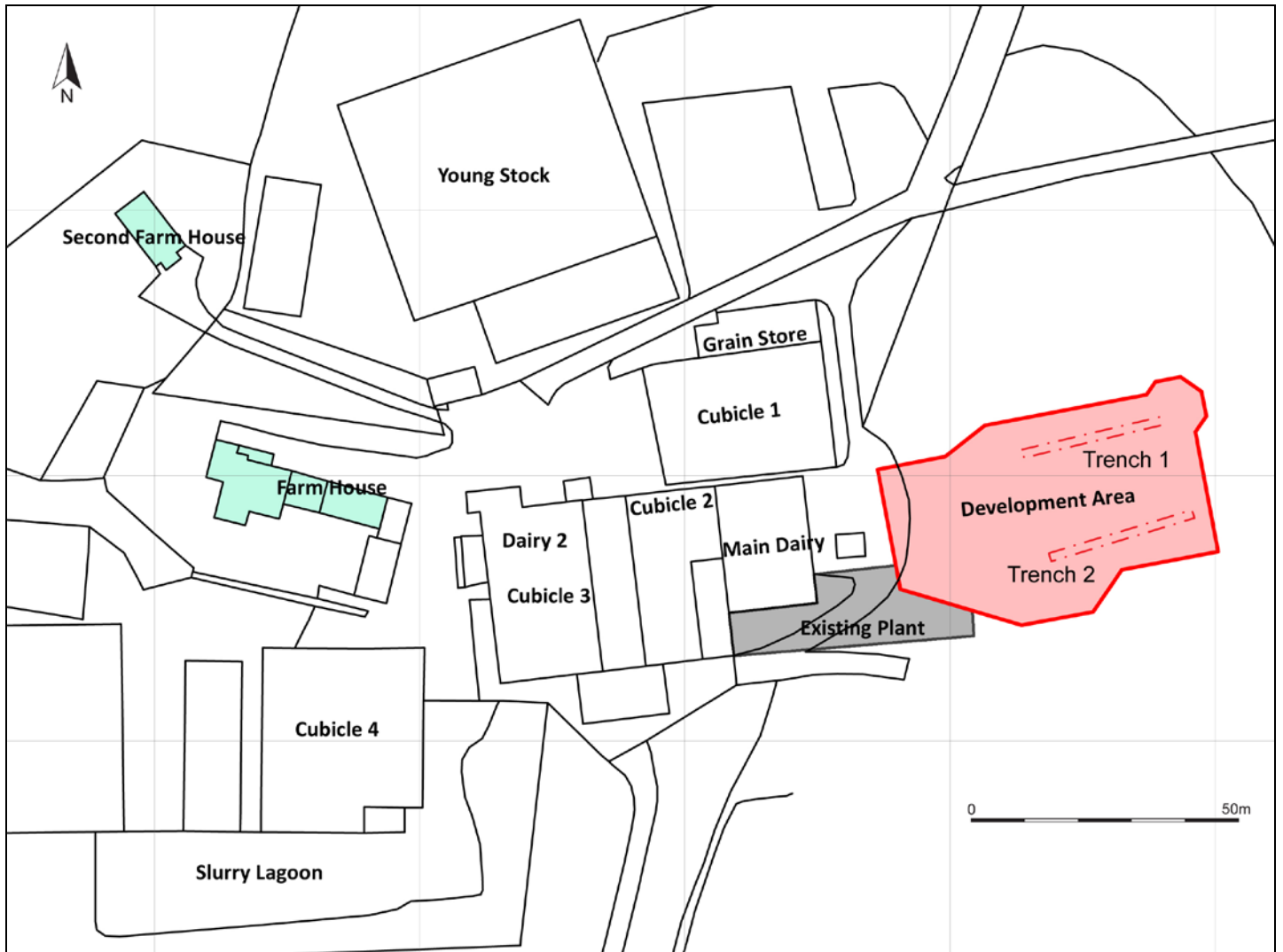


Figure 2: Trench locations.



Figure 3: Trench 2, viewed from the east (2m scale).

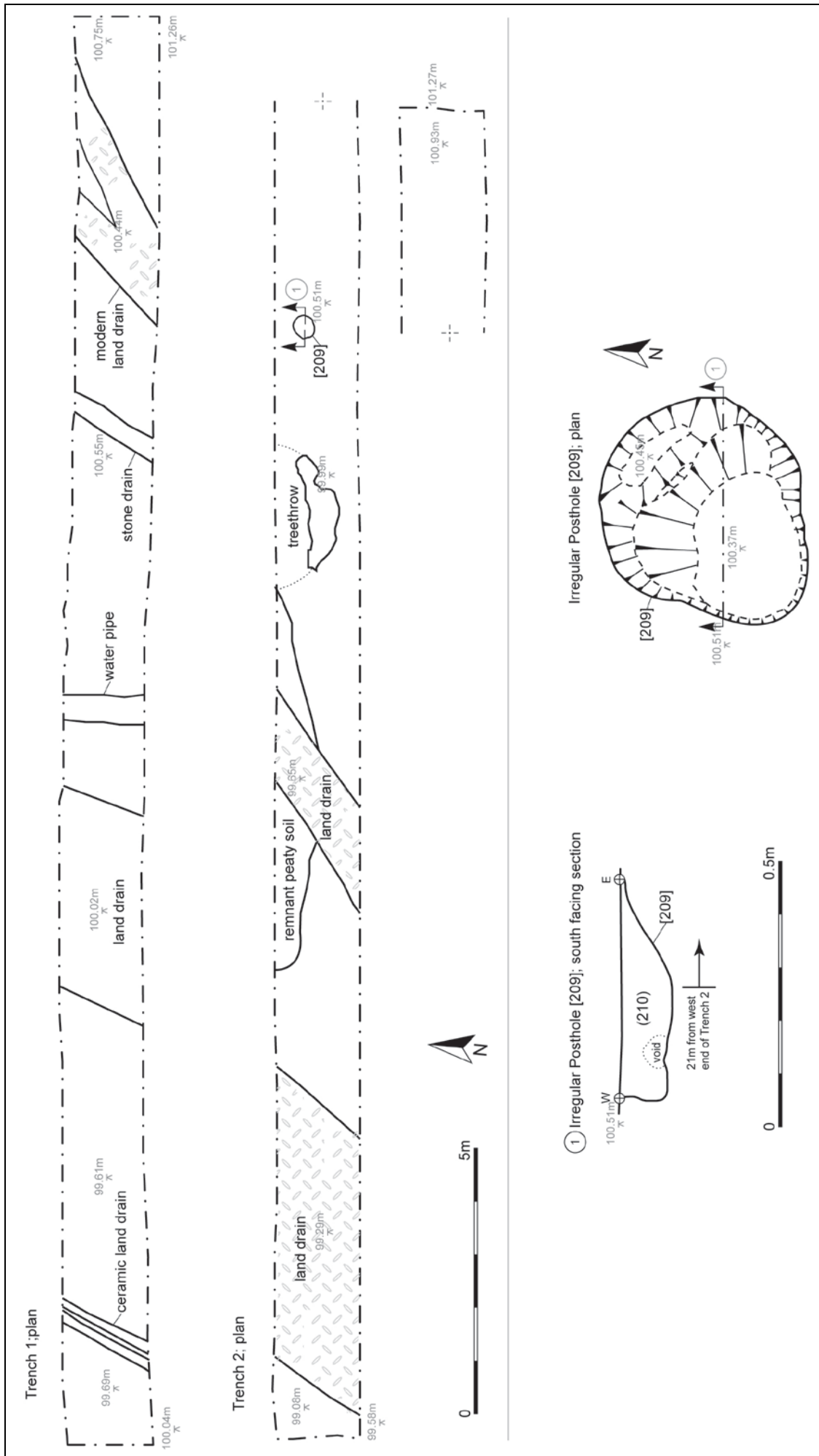


Figure 4: Site drawings; trench plans and Posthole [209] section drawing and plan.
 (*all levels relate to an arbitrary site TBM).



Figure 5: Posthole [209], section, viewed from the south (0.30m scale).

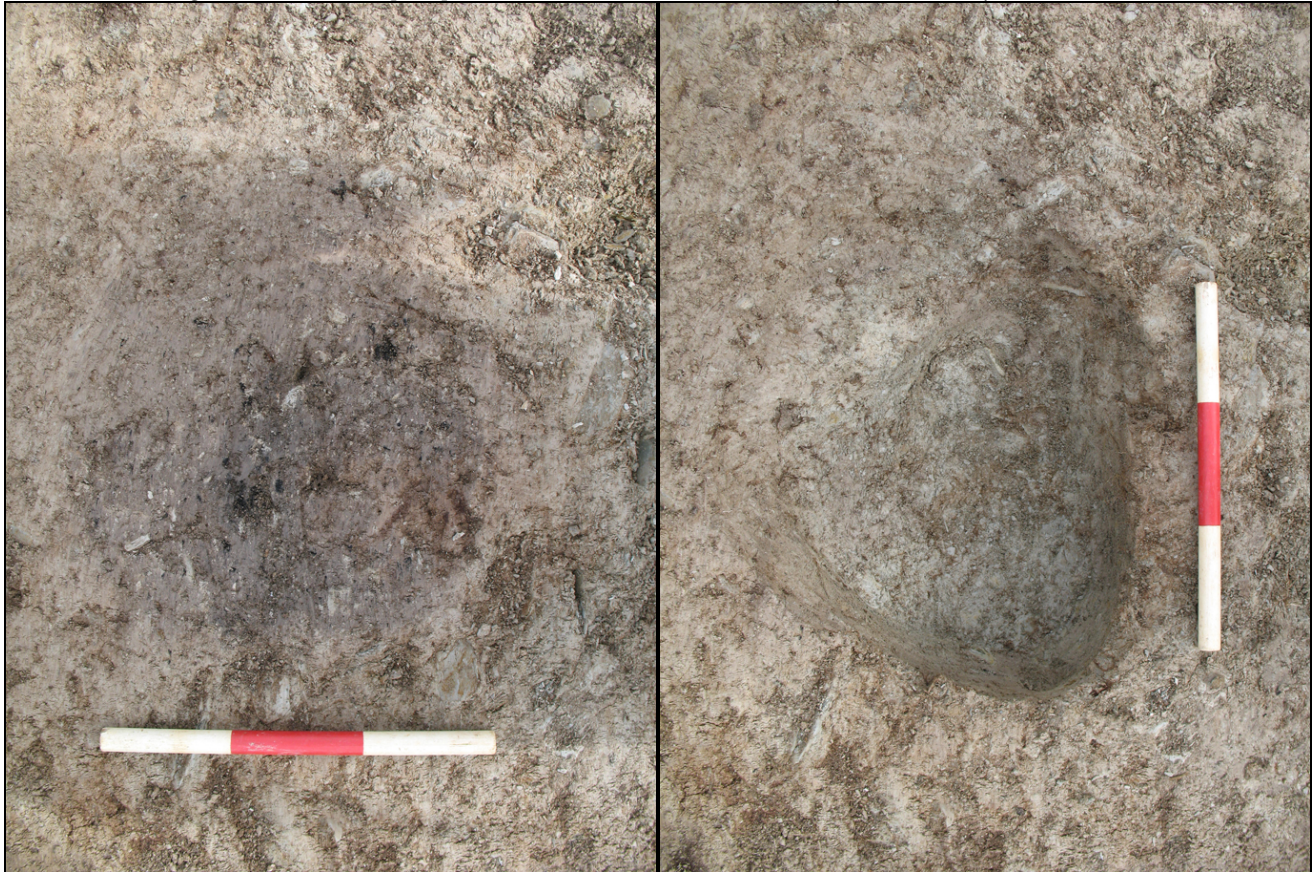


Figure 6: Posthole [209]; pre-excitation & Post-excitation, viewed from the south (0.30m scale).