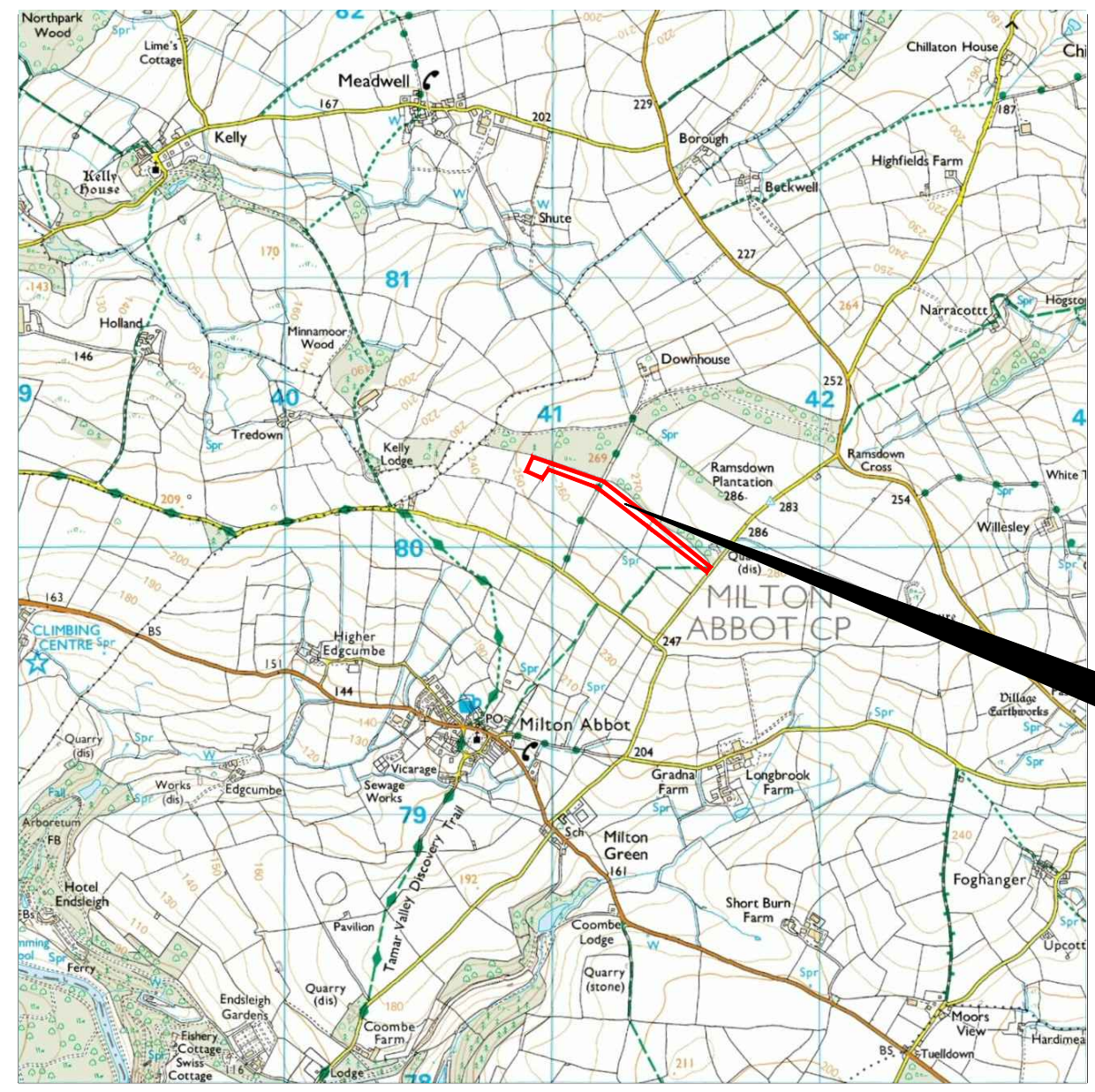


Reproduced from Ordnance Survey's 1:25 000 map of 1998 with the permission of the controller of Her Majesty's Stationery Office. Crown Copyright reserved. Licence No: AL 50125A
 Licensee:
 Stratascan Ltd.
 Vineyard House
 Upper Hook Road
 Upton Upon Severn
 WR8 0SA
 OS 100km square = SX



82
81
80
79
78



39 40 41 42 43

Amendments

Issue No.	Date	Description
-	-	-
-	-	-

© Stratascan Ltd - 2014



Site centred on NGR SX 409 803

Client
SOUTH WEST ARCHAEOLOGY

Project Title Job No. J6519
MILTON ABBOT, DEVON

Subject
LOCATION PLAN OF SURVEY AREA

STRATASCAN™
 GEOPHYSICS FOR ARCHAEOLOGY AND ENGINEERING
 VINEYARD HOUSE T: 01684 592266
 UPTON UPON SEVERN E: info@stratascan.co.uk
 WR8 0SA www.stratascan.co.uk

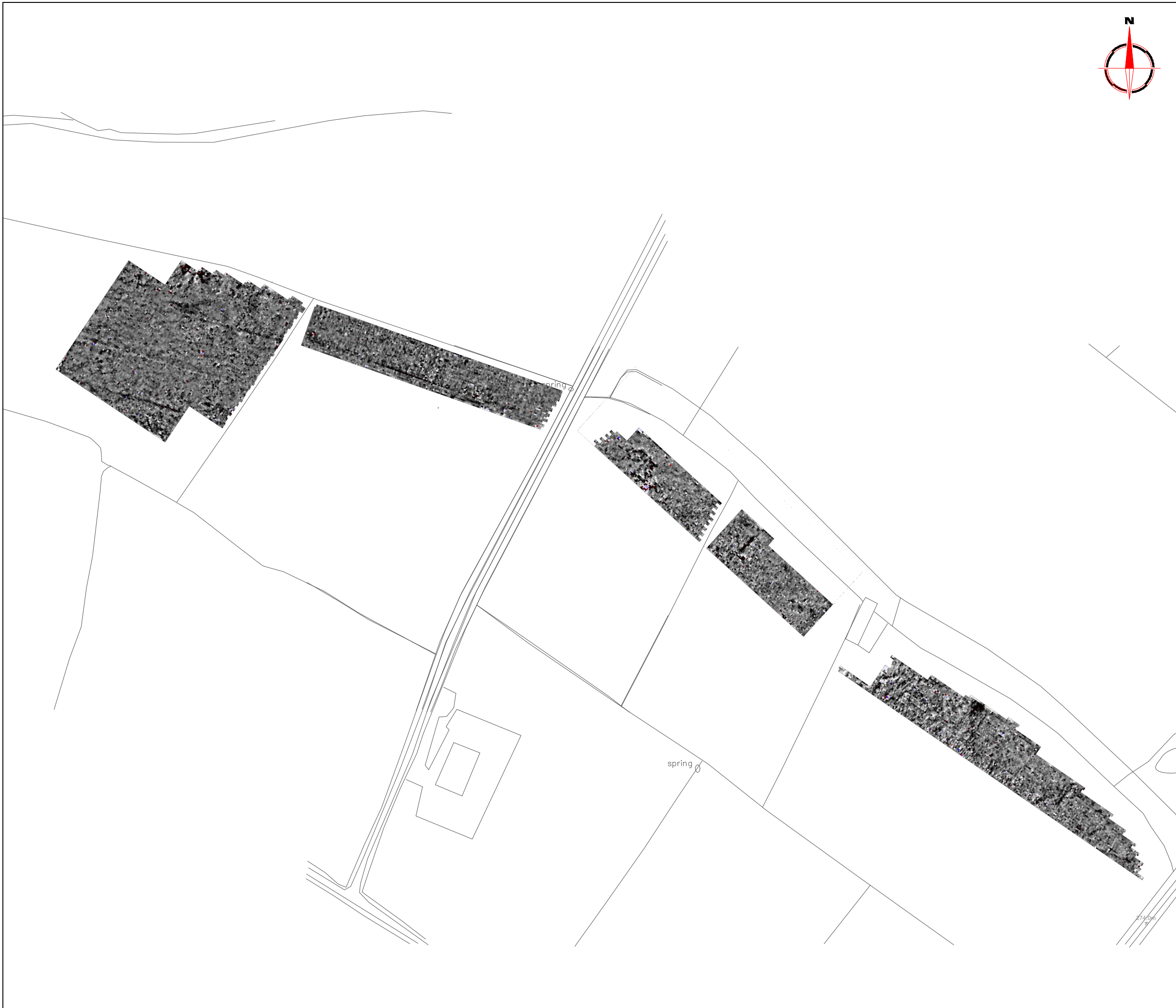
EUROPEAN GPR ASSOCIATION
sumo SUMO GROUP MEMBER
 ISO 9001 certified
 UKAS ISO 14001 certified

Scale 1:25000
 0m 500m 1000m

Plot A3	Checked by DGE	Issue No. 01
Survey date FEB 14	Drawn by TR	Figure No. 01



Amendments				
Issue No.	Date	Description		
-	-	-		
-	-	-		
© Stratascan Ltd - 2014				
REFERENCING INFORMATION				
A-B	90m	A-1	76.57m	A-2 123.33m
A-3	183.61m	B-1	40.68m	B-2 42.11m
B-3	142.07m	C-D	150m	C-2 137.44m
C-3	33.73m	C-4	231.23m	D-2 234.30m
D-3	156.30m	D-4	169.43m	E-F 90m
E-5	138.52m	E-6	115.41m	E-7 191.50m
F-5	148.28m	F-6	50.86m	F-7 133.56m
G-H	90m	G-6	51.10m	G-7 123.34m
G-8	182.04m	H-6	116.14m	H-7 134.19m
H-8	120.66m	I-J	210m	I-8 107.47m
I-9	133.20m	I-10	244m	J-8 248.60m
J-9	172m	J-10	37.42m	
A-J	Base line			
1,2,3	Referencing points			
Client				
SOUTH WEST ARCHAEOLOGY				
Project Title		Job No. J6519		
MILTON ABBOT, DEVON				
Subject				
LOCATION OF SURVEY GRIDS AND REFERENCING				
GEOPHYSICS FOR ARCHAEOLOGY AND ENGINEERING VINEYARD HOUSE T: 01684 592266 UPTON UPON SEVERN E: info@stratascan.co.uk WR8 0SA www.stratascan.co.uk				
SUMO GROUP MEMBER 				
Scale 1:2500				
Plot	Checked by		Issue No.	
A3	DGE		01	
Survey date	Drawn by		Figure No.	
FEB 14	TR		02	



Amendments

Issue No.	Date	Description
-	-	-
-	-	-

© Stratascan Ltd - 2014

Plotting parameters

Maximum +100nT (red)
Minimum -100nT (blue)

Client
SOUTH WEST ARCHAEOLOGY

Project Title Job No. J6519
MILTON ABBOT, DEVON

Subject
COLOUR PLOT OF GRADIOMETER DATA SHOWING EXTREME VALUES - OVERVIEW

STRATASCAN™
GEOPHYSICS FOR ARCHAEOLOGY AND ENGINEERING

VINEYARD HOUSE T: 01684 592266
UPTON UPON SEVERN E: info@stratascan.co.uk
WR8 0SA www.stratascan.co.uk

EUROPEAN GPR ASSOCIATION

SUMO SUMO GROUP MEMBER

ims ISO 9001 certified

ims ISO 14001 certified

Scale **1:2500**

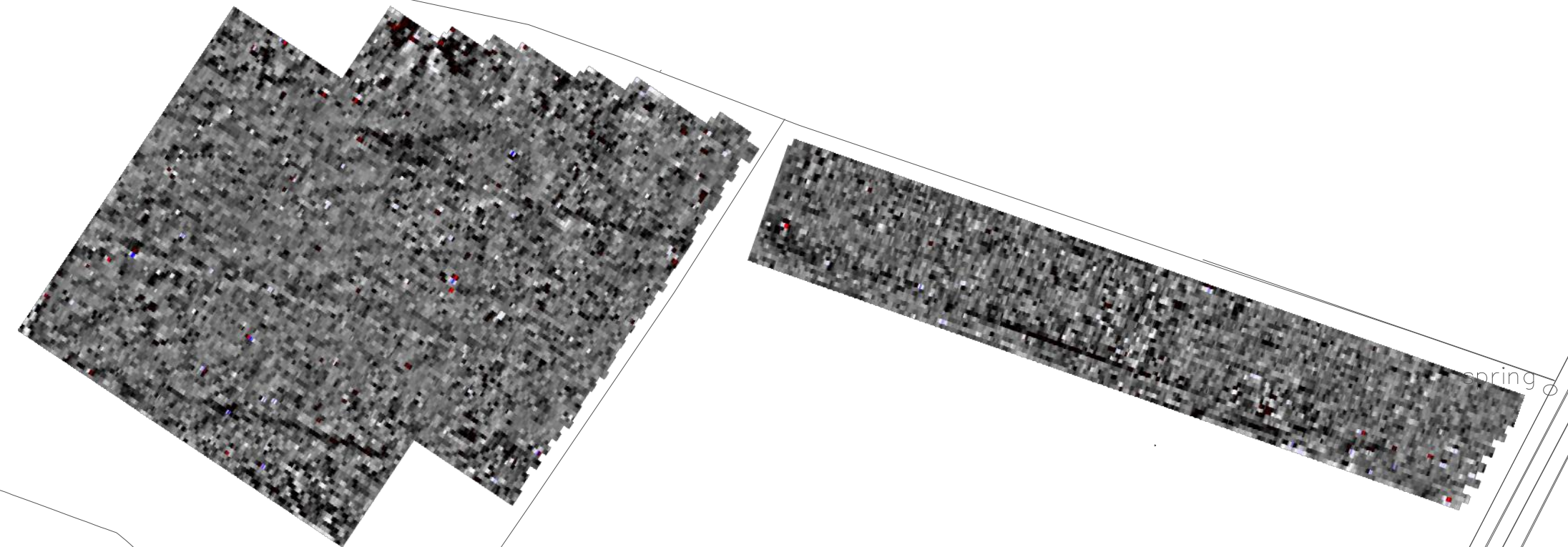
Plot A3	Checked by DGE	Issue No. 01
Survey date FEB 14	Drawn by TR	Figure No. 03



Amendments

Issue No.	Date	Description
-	-	-
-	-	-

© Stratascan Ltd - 2014



Plotting parameters

Maximum +100nT (red)
Minimum -100nT (blue)

Client
SOUTH WEST ARCHAEOLOGY

Project Title Job No. J6519
MILTON ABBOT, DEVON

Subject
COLOUR PLOT OF GRADIOMETER DATA SHOWING EXTREME VALUES - WEST

STRATASCAN™
GEOPHYSICS FOR ARCHAEOLOGY AND ENGINEERING

VINEYARD HOUSE T: 01684 592266
UPTON UPON SEVERN E: info@stratascan.co.uk
WR8 0SA www.stratascan.co.uk

EUROPEAN GPR ASSOCIATION

SUMO SURVEYS SUMO GROUP MEMBER

ims ISO 9001 certified **UKAS** **ims ISO 14001 certified** **UKAS**

Scale **1:1250**

Plot A3	Checked by DGE	Issue No. 01
Survey date FEB 14	Drawn by TR	Figure No. 04



Amendments

Issue No.	Date	Description
-	-	-
-	-	-

© Stratascan Ltd - 2014

Plotting parameters

Maximum +100nT (red)
Minimum -100nT (blue)

Client
SOUTH WEST ARCHAEOLOGY

Project Title Job No. J6519
MILTON ABBOT, DEVON

Subject
COLOUR PLOT OF GRADIOMETER DATA SHOWING EXTREME VALUES - EAST

STRATASCAN™
GEOPHYSICS FOR ARCHAEOLOGY AND ENGINEERING

VINEYARD HOUSE T: 01684 592266
UPTON UPON SEVERN E: info@stratascan.co.uk
WR8 0SA www.stratascan.co.uk

EUROPEAN GPR ASSOCIATION

sumo SUMO GROUP MEMBER

ims ISO 9001 certified

ims ISO 14001 certified

Scale **1:1250**

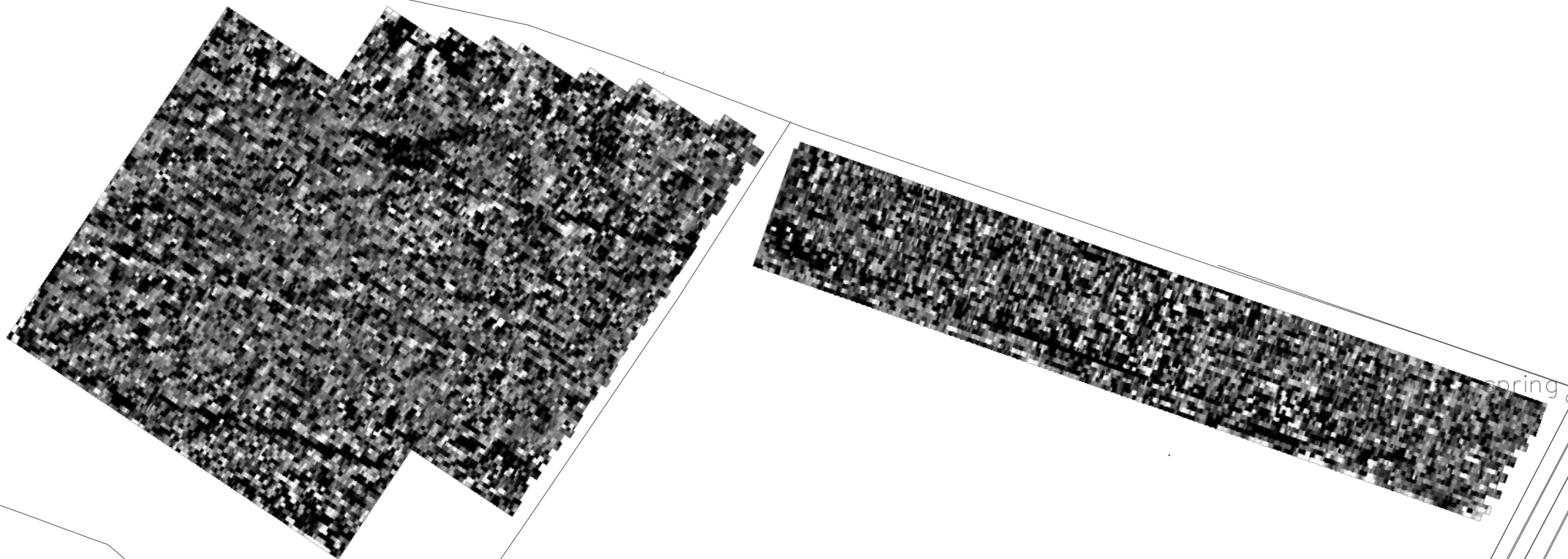
Plot A3	Checked by DGE	Issue No. 01
Survey date FEB 14	Drawn by TR	Figure No. 05



Amendments

Issue No.	Date	Description
-	-	-
-	-	-

© Stratascan Ltd - 2014



Plotting parameters

Maximum +5nT (black)
Minimum -5nT (white)

Zero Mean

+5nT

-5nT

Client
SOUTH WEST ARCHAEOLOGY

Project Title Job No. J6519
MILTON ABBOT, DEVON

Subject
**PLOT OF MINIMALLY PROCESSED
GRADIOMETER DATA - WEST**

STRATASCAN™
GEOPHYSICS FOR ARCHAEOLOGY
AND ENGINEERING

VINEYARD HOUSE T: 01684 592266
UPTON UPON SEVERN E: info@stratascan.co.uk
WR8 0SA www.stratascan.co.uk

EUROPEAN GPR ASSOCIATION

SUMO SURVEY SERVICES SUMO GROUP MEMBER

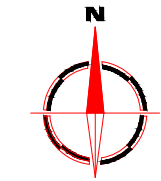
ims ISO 9001 certified

ims ISO 14001 certified

UKAS ORGANISATION

Scale 1:1250

Plot A3	Checked by DGE	Issue No. 01
Survey date FEB 14	Drawn by TR	Figure No. 07



Amendments

Issue No.	Date	Description
-	-	-
-	-	-

© Stratascan Ltd - 2014

Plotting parameters

Maximum +5nT (black)
Minimum -5nT (white)

The histogram shows a distribution of data points centered around a 'Zero Mean' line. To the right, a vertical color scale transitions from black at the top (+5nT) to white at the bottom (-5nT).

Client
SOUTH WEST ARCHAEOLOGY

Project Title Job No. J6519
MILTON ABBOT, DEVON

Subject
PLOT OF MINIMALLY PROCESSED GRADIOMETER DATA - EAST

STRATASCAN™
GEOPHYSICS FOR ARCHAEOLOGY AND ENGINEERING

VINEYARD HOUSE T: 01684 592266
UPTON UPON SEVERN E: info@stratascan.co.uk
WR8 0SA www.stratascan.co.uk

EUROPEAN GPR ASSOCIATION

SUMO GROUP MEMBER

REGISTERED ORGANISATION

ims ISO 9001 certified

ims ISO 14001 certified

Scale **1:1250**

Plot A3	Checked by DGE	Issue No. 01
Survey date FEB 14	Drawn by TR	Figure No. 08







Amendments

Issue No.	Date	Description
-	-	-
-	-	-




© Stratascan Ltd - 2014

KEY





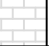



PROBABLE ARCHAEOLOGY

-  Positive anomaly / weak positive anomaly - probable cut feature of archaeological origin
-  Negative anomaly / weak negative anomaly - probable bank or earthwork of archaeological origin
-  Moderate strength discrete anomaly - probable thermoremanent feature
-  Widely spaced curving parallel linear anomalies - probably related to ridge-and-furrow

POSSIBLE ARCHAEOLOGY

-  Positive anomaly / weak positive anomaly - possible cut feature of archaeological origin
-  Negative anomaly / weak negative anomaly - possible bank or earthwork of archaeological origin
-  Moderate strength discrete anomaly - possible thermoremanent feature

OTHER ANOMALIES

-  Closely spaced parallel linear anomalies - probably related to agricultural activity such as ploughing
-  Linear anomaly - probably related to pipe, cable or other modern service
-  Linear anomaly related to former footpath present on available mapping until 1964
-  Magnetic disturbance associated with nearby metal object such as service or field boundary
-  Strong magnetic debris - possible disturbed or made ground
-  Scattered magnetic debris
-  Area of amorphous magnetic variation - probable natural (e.g. geological or pedological) origin
-  Magnetic spike - probable ferrous object

Client
SOUTH WEST ARCHAEOLOGY

Project Title Job No. J6519
MILTON ABBOT, DEVON

Subject
ABSTRACTION AND INTERPRETATION OF GRADIOMETER ANOMALIES - OVERVIEW

STRATASCAN™
GEOPHYSICS FOR ARCHAEOLOGY AND ENGINEERING
 VINEYARD HOUSE T: 01684 592266
 UPTON UPON SEVERN E: info@stratascan.co.uk
 WR8 0SA www.stratascan.co.uk

EUROPEAN GPR ASSOCIATION

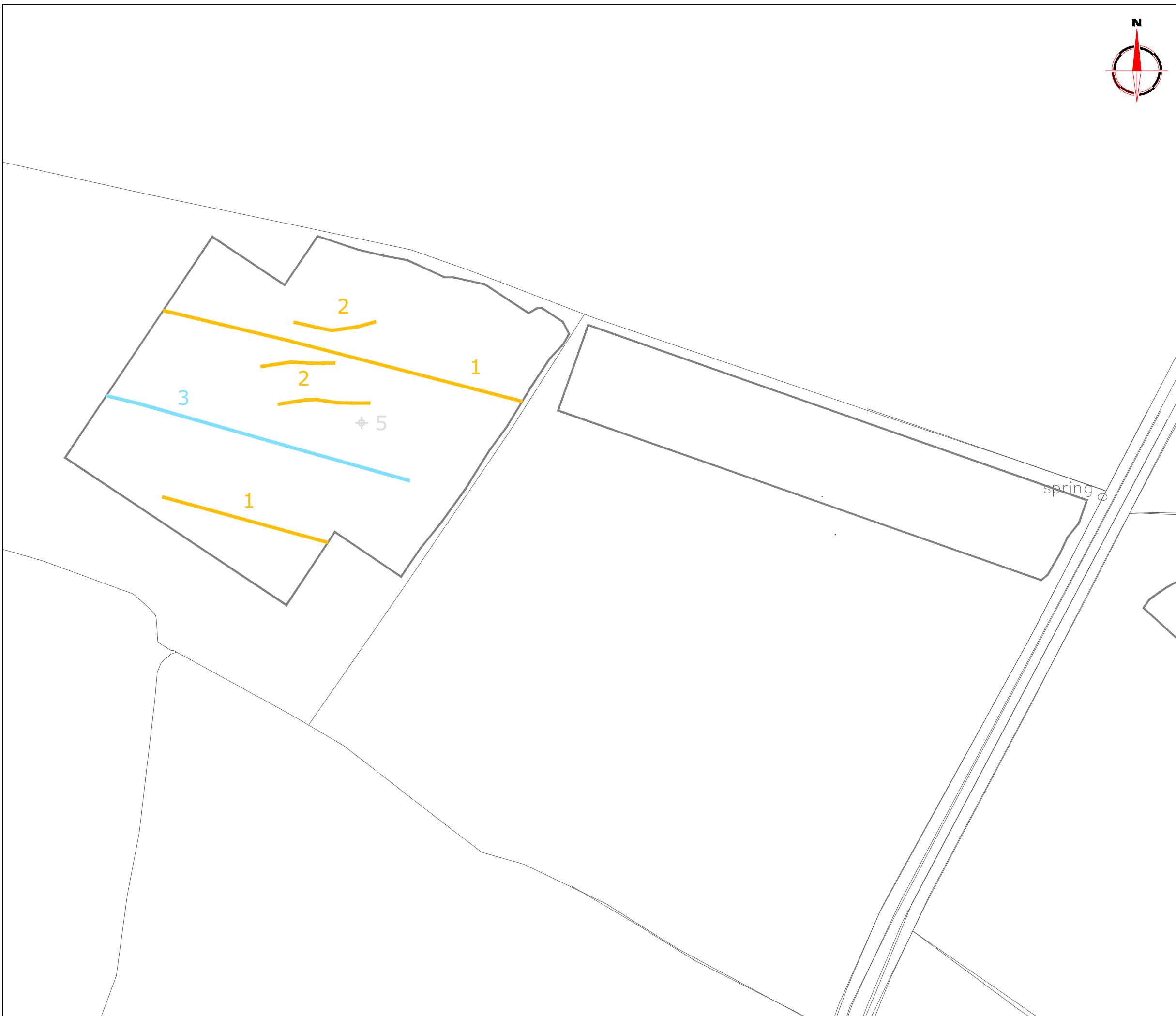
SUMO GROUP MEMBER



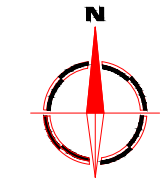



Scale **1:2500**
 0m 50 100m

Plot A3	Checked by DGE	Issue No. 01
Survey date FEB 14	Drawn by TR	Figure No. 09



Amendments		
Issue No.	Date	Description
-	-	-
-	-	-
© Stratascan Ltd - 2014		
KEY		
PROBABLE ARCHAEOLOGY		
	Positive anomaly / weak positive anomaly - probable cut feature of archaeological origin	
	Negative anomaly / weak negative anomaly - probable bank or earthwork of archaeological origin	
	Moderate strength discrete anomaly - probable thermoremanent feature	
	Widely spaced curving parallel linear anomalies - probably related to ridge-and-furrow	
POSSIBLE ARCHAEOLOGY		
	Positive anomaly / weak positive anomaly - possible cut feature of archaeological origin	
	Negative anomaly / weak negative anomaly - possible bank or earthwork of archaeological origin	
	Moderate strength discrete anomaly - possible thermoremanent feature	
OTHER ANOMALIES		
	Closely spaced parallel linear anomalies - probably related to agricultural activity such as ploughing	
	Linear anomaly - probably related to pipe, cable or other modern service	
	Linear anomaly related to former footpath present on available mapping until 1964	
	Magnetic disturbance associated with nearby metal object such as service or field boundary	
	Strong magnetic debris - possible disturbed or made ground	
	Scattered magnetic debris	
	Area of amorphous magnetic variation - probable natural (e.g. geological or pedological) origin	
	Magnetic spike - probable ferrous object	
Client		
SOUTH WEST ARCHAEOLOGY		
Project Title		Job No. J6519
MILTON ABBOT, DEVON		
Subject		
ABSTRACTION AND INTERPRETATION OF GRADIOMETER ANOMALIES - WEST		
STRATASCAN™		
GEOPHYSICS FOR ARCHAEOLOGY AND ENGINEERING		
VINEYARD HOUSE		T: 01684 592266
UPTON UPON SEVERN		E: info@stratascan.co.uk
WR8 0SA		www.stratascan.co.uk
SUMO GROUP MEMBER		
Scale 1:1250		
0m 10 20 30 40 50m		
Plot	Checked by	Issue No.
A3	DGE	01
Survey date	Drawn by	Figure No.
FEB 14	TR	10



Amendments

Issue No.	Date	Description
-	-	-
-	-	-

© Stratascan Ltd - 2014

KEY

PROBABLE ARCHAEOLOGY

- Positive anomaly / weak positive anomaly - probable cut feature of archaeological origin
- Negative anomaly / weak negative anomaly - probable bank or earthwork of archaeological origin
- Moderate strength discrete anomaly - probable thermoremanent feature
- Widely spaced curving parallel linear anomalies - probably related to ridge-and-furrow

POSSIBLE ARCHAEOLOGY

- Positive anomaly / weak positive anomaly - possible cut feature of archaeological origin
- Negative anomaly / weak negative anomaly - possible bank or earthwork of archaeological origin
- Moderate strength discrete anomaly - possible thermoremanent feature

OTHER ANOMALIES

- Closely spaced parallel linear anomalies - probably related to agricultural activity such as ploughing
- Linear anomaly - probably related to pipe, cable or other modern service
- Linear anomaly related to former footpath present on available mapping until 1964
- Magnetic disturbance associated with nearby metal object such as service or field boundary
- Strong magnetic debris - possible disturbed or made ground
- Scattered magnetic debris
- Area of amorphous magnetic variation - probable natural (e.g. geological or pedological) origin
- Magnetic spike - probable ferrous object

Client
SOUTH WEST ARCHAEOLOGY

Project Title Job No. J6519
MILTON ABBOT, DEVON

Subject
ABSTRACTION AND INTERPRETATION OF GRADIOMETER ANOMALIES - EAST

STRATASCAN™
GEOPHYSICS FOR ARCHAEOLOGY AND ENGINEERING
VINEYARD HOUSE T: 01684 592266
UPTON UPON SEVERN E: info@stratascan.co.uk
WR8 0SA www.stratascan.co.uk

EUROPEAN GPR ASSOCIATION
 SUMO GROUP MEMBER
 IMS ISO 9001 certified
 UKAS ISO 9001 certified
 IMS ISO 14001 certified
 UKAS ISO 14001 certified

Scale **1:1250**

Plot A3	Checked by DGE	Issue No. 01
Survey date FEB 14	Drawn by TR	Figure No. 11