

**LAND AT COURT BARTON
AVETON GIFFORD
SOUTH HAMS
DEVON**

Results of an Archaeological Evaluation



South West Archaeology Ltd. report no.250828



www.swarch.net

01769 573555
01872 223164

LAND AT COURT BARTON, AVETON GIFFORD, SOUTH HAMS, DEVON RESULTS OF AN ARCHAEOLOGICAL EVALUATION

By J. Bampton & N. Boyd
Report Version: Final
Draft issued: 18th August 2025
Finalised: 3rd September 2025

Work undertaken by SWARCH for a Private Client

SUMMARY

The site lies on the north-east side of Aveton Gifford, immediately south-east of Court Barton and c.50m south-east of St Andrew's Church, at Pulleys Corner. Although now a garden, the site is within an enclosure recorded as meadow on the c.1840 Aveton Gifford tithe apportionment, and recorded by the Devon HLC as probable medieval to post-medieval Barton fields. The tithe map depicts a building and enclosure/yard at the north end of the site. Court Barton to the north is recorded as a 17th century farmhouse on the site of an earlier manor (MDV4874; MDV51243). The site has been subject to groundworks associated with modern drainage, septic tanks, a concrete structure and parking area, and green waste disposal. Some modern drainage and services were identified by an earlier ground penetrating radar (GPR) survey (Location Surveys Ltd).

Eight evaluation trenches, totalling c.87m, were excavated across the site. These targeted anomalies identified on the previous GPR survey and general site coverage. In the southern part of the site the evaluation revealed four ditches, and an area with a spread, an associated posthole and a possible stakehole. The spread contained one sherd of probable Romano-British pottery and the ditches either contained or were associated with Romano-British pottery and a struck flint; all the Romano-British pottery was small and abraded, indicating it was residual. A large number of post-medieval and modern drains crossed this part of the site.

In the northern part of the site the evaluation revealed modern made ground and the concrete slab for a yard area associated with structures along the lane shown on historic mapping. This area appears to have been terraced and built up and it is likely that any archaeological features will have been truncated or destroyed.



August 2025

South West Archaeology Ltd. shall retain the copyright of any commissioned reports, tender documents or other project documents, under the Copyright, Designs and Patents Act 1988 with all rights reserved, excepting that it hereby provides an exclusive licence to the client for the use of such documents by the client in all matters directly relating to the project. The views and recommendations expressed in this report are those of South West Archaeology Ltd. and are presented in good faith on the basis of professional judgement and on information available at the time of production.

CONTENTS

<i>SUMMARY</i>	2
<i>CONTENTS</i>	3
<i>LIST OF FIGURES</i>	3
<i>LIST OF APPENDICES</i>	3
<i>ACKNOWLEDGEMENTS</i>	4
<i>PROJECT CREDITS</i>	4
1.0 INTRODUCTION	5
1.1 PROJECT BACKGROUND	5
1.2 SITE LOCATION	5
1.3 TOPOGRAPHICAL AND GEOLOGICAL BACKGROUND	5
1.4 HISTORICAL AND ARCHAEOLOGICAL BACKGROUND	5
1.5 METHODOLOGY	7
2.0 ARCHAEOLOGICAL EVALUATION TRENCHING	8
2.1 INTRODUCTION	8
2.2 DEPOSIT MODEL	8
2.3 RESULTS	8
2.3.1 Trench 1	9
2.3.2 Trench 2	10
2.3.3 Trench 3	10
2.3.4 Trench 4	10
2.3.5 Trench 5	10
2.3.6 Trench 6	11
2.3.7 Trench 7	11
2.3.8 Trench 8	11
2.4 FINDS	12
2.5 DISCUSSION	12
3.0 CONCLUSION	14
4.0 BIBLIOGRAPHY & REFERENCES	15

LIST OF FIGURES

Cover plate: Southern area of the site, mid-excavation; viewed from the east-north-east (no scales).

FIGURE 1: SITE LOCATION.	4
FIGURE 2: DITCHES [103] AND [105]; VIEWED FROM THE WEST.	9
FIGURE 3: POSTHOLE [307] AND THE SOUTH-EAST END OF TRENCH 3; VIEWED FROM THE SOUTH-EAST.	11
FIGURE 4: EVALUATION TRENCH PLAN OVER GPR SURVEY.	21
FIGURE 5: EVALUATION TRENCH PLAN; OVERLYING LIDAR IMAGE OF SITE.	22
FIGURE 6: TRENCH AND FEATURE PLAN, SHOWING SECTION AND FEATURE LOCATIONS.	23
FIGURE 7: SECTION DRAWINGS AND FEATURE PLANS FOR TRENCHES 1 TO 5.	24
FIGURE 8: SECTION DRAWINGS AND FEATURE PLANS FOR TRENCHES 6 TO 8.	25
FIGURE 9: EXTRACT FROM THE AVETON GIFFORD TITHE MAP, 1841.	26
FIGURE 10: EXTRACT FROM THE ORDNANCE SURVEY 1 ST EDITION MAP, C.1886.	26
FIGURE 11: AERIAL IMAGERY OF THE SITE FROM 1999; INOTERRA LTD. & BLUESKY.	27

LIST OF APPENDICES

APPENDIX 1: CONTEXT LIST	16
APPENDIX 2: FINDS CONCORDANCE	19
APPENDIX 3: TRENCH COORDINATE TABLE	20
APPENDIX 4: SITE PLANS AND SECTION DRAWINGS	21
APPENDIX 5: ADDITIONAL SOURCES ASSOCIATED WITH SITE BACKGROUND (SECTION 1.4)	26
APPENDIX 6: BULK SAMPLE CONCORDANCE	27
APPENDIX 7: SUPPORTING PHOTOGRAPHS	28

ACKNOWLEDGEMENTS

THE CLIENT

STAFF OF THE DEVON HERITAGE CENTRE (DHC)

STAFF OF THE DEVON COUNTY HISTORIC ENVIRONMENT TEAM (DCHET)

PROJECT CREDITS

DIRECTOR: DR. SAMUEL WALLS, MCIFA

FIELDWORK: JOSEPH BAMPTON, MCIFA

REPORT: JOSEPH BAMPTON, MCIFA, NATALIE BOYD

EDITING: DR. BRYN MORRIS, MCIFA

GRAPHICS: JOSEPH BAMPTON, MCIFA

POTTERY IDENTIFICATIONS: DR. IMOGEN WOOD, MCIFA

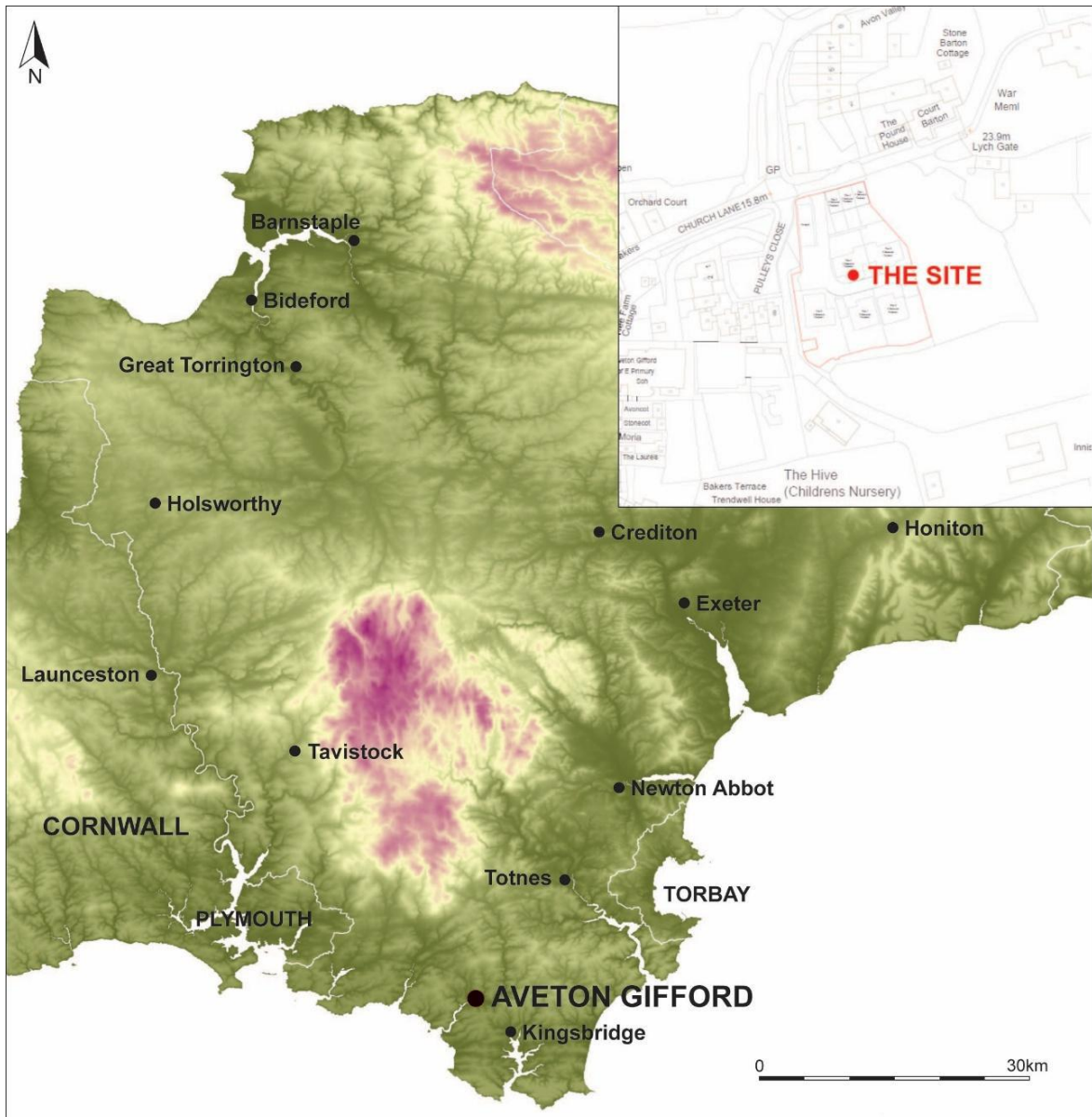


FIGURE 1: SITE LOCATION (MAP INSERT SUPPLIED BY THE CLIENT).

1.0 INTRODUCTION

LOCATION:	LAND AT COURT BARTON
PARISH:	AVETON GIFFORD
DISTRICT:	SOUTH HAMS
COUNTY:	DEVON
NGR:	SX 69494 47742
PLANNING No.:	1037/25/FUL
DCHET REF.:	ARCH/DM/SH/41076A
SWARCH REF.	AGCB25
OASIS REF:	SOUTHWES1-535483

1.1 PROJECT BACKGROUND

South West Archaeology Ltd. (SWARCH) was commissioned by a private Client to undertake an archaeological evaluation on land at Court Barton, Aveton Gifford, South Hams, Devon, as part of the planning submission for a proposed residential development. This work was undertaken to assess the archaeological potential of the site, and thus the potential impact of the development on the buried archaeological resource. This work was undertaken in accordance with a Written Scheme of Investigation (WSI; Boyd 2025) drawn up in consultation with the Devon County Historic Environment Team (DCHET).

1.2 SITE LOCATION

The site lies located on the north-east side of Aveton Gifford, immediately south-east of Court Barton and c.50m south-east of the churchyard of St Andrew's Church (and c.100m south-east of the church itself), at Pulleys Corner, off the corner of Pulleys Close and Church Lane. It falls within the western part of the gardens attached to Court Barton, comprising a small northern enclosure and a larger southern enclosure, divided and bounded by mature trees and hedgerows, with ditch/stream along the southern boundary of the site (Figure 1).

1.3 TOPOGRAPHICAL AND GEOLOGICAL BACKGROUND

The site is located on the south-south-west facing slopes of a shallow coombe, with slight terraces cut into the slope between it and Court Barton, at an elevation of 15m-20m AOD. The soils of the site are the well-drained fine loamy and fine silty soils over rock of the Denbigh 1 Association (SSEW 1983); these overlie the sedimentary slate, siltstone and sandstone of the Dartmouth Group (BGS 2025).

1.4 HISTORICAL AND ARCHAEOLOGICAL BACKGROUND

The site lies to the north-east side of the village of Aveton Gifford, in the parish of the same name, in the historic Hundred of Ermington and the Deanery of Woodleigh (Lysons 1822). The manor had been demesne of the Crown before being held by the Giffard family, presumably adding their name to the *Avetone* listed in the Domesday Book; it passed from them to the families of Prous and Mules successively. From the Mules, it passed via a female heir, to the Damarell family, one of whose co-heiresses passed it into the Berry family. By the early 19th century, Lysons notes that the manor is the possession of Edmund Pollexfen Bastard, Esq. M.P., with Court Barton noted by Lysons as the property of John Morth Woolcombe, Esq. at this time (Lysons 1822).

The Aveton Gifford tithe map of 1841 (Figure 9) shows the site as forming part of a large, irregular enclosure, plot no.1255. This was part of the Court landholding, owned by John Morth

Woolcombe, as noted in Lysons, and occupied by Nathaniel Pearce. Plot no.1255 was known as *Pulleys* and was recorded as a meadow. A building and possible yard are depicted at the northern end of the site. A solid line appears to tie this to plot no.1253 (listed as *Homestead &c*). To the south of the plot is a small, diagonal, linear plot, in the approximate position of the lane today, known as *Watering Piece*, probably referring to a place where livestock could take water. To the south and east of the site is an orchard.

The 1st edition Ordnance Survey (OS) Map, surveyed in 1885 and published in 1886 (Figure 10), shows the site as almost identical to the tithe map. To the west of the site, along the road, more dwellings had been constructed, and a school is labelled. The 2nd edition OS map of 1906 (not depicted) is, again, very similar. Aerial photography from 1946 (Figure 11) is not very clear but appears to show a site unchanged from the earlier OS mapping.

Modern aerial imagery for the site from 1999 (Figure 12) shows the site divided into two, as at present. The northern part of the site has been cleared of buildings and seems to be in use as a garden, with a track across it and the edge of a parking area (presumably on the footprint of the former building). The southern part of the site seems to be overgrown or rough ground. By 2010, some landscaping had been done across the site, the access track across the northern part of the site is no longer visible and the parking area has been reduced to two spaces at the eastern end. A large proportion of the overgrowth/shrub appears to have been cleared in the southern part of the larger plot. Imagery from 2020 shows the southern part of the site cleared, and trees along the boundary between the north and south parts of the site, largely reflecting what we see today.

LiDAR imagery for the site (Figure 5) appears to show the division between the north and south parts of the site and possibly a relict channel or stream winding through the middle of the southern plot but otherwise does not show any clear features of archaeological origin. Terraces are apparent immediately to the east of the site, and possibly linear features associated with footpaths or perhaps drainage trenches running north-east by south-west across the site.

The Devon Historic Landscape Characterisation (HLC) records the site as lying within an area of Barton Fields: *'These relatively large, regular enclosures seem likely to have been laid out between C15th-18th. Some curving boundaries may be following earlier divisions in the pre-existing Medieval fields'*.

The northern part of the site lies within the Aveton Gifford Conservation Area. There does not appear to be a Conservation Area Appraisal for the village. A Neighbourhood Plan exists and has been adopted, but while this mentions heritage and the Conservation Area, it does not give any particular detail. The site appears to correlate with *Area 5* noted in the Local Plan as suitable for development, but again, heritage does not feature in the site specifics.

Within the site, the Devon Historic Environment Record (HER) indicates a probable post-medieval catch-meadow identified on aerial photography (MDV127793). To the north of the site is the 17th century farmhouse which is also described as the former manor house (MDV4874). Additionally, an early medieval vault (MDV51243), railings to the front of Court Barton (MDV91396), and, just to the east, the Aveton Gifford war memorial (MDV91204).

A utilities location service conducted investigations including a ground penetrating radar (GPR) survey across the site as part of establishing services on the site, but also to quantify the archaeological potential of the site. This GPR survey (Figure 4) detected pipes and an electrical service, and a pair of perpendicular anomalies that *could* indicate walls or other disturbances or deposits.

The landowner (pers. comm.) states that there is a concrete slab across most of the northern part

of the site under a shallow topsoil. Also, that during (relatively) recent groundworks at the adjacent school/nursery south-west of the site, a large amount of topsoil (and presumably subsoil) was stockpiled to the east of the site and eventually spread across the southern part of the site. The ground adjacent to the ditch/stream along the southern edge of the site appear to have been raised by at least 1m; this material will have concealed any archaeological earthworks that might have been present.

Supporting sources for this section can be seen in Appendices 4 and 5.

1.5 **METHODOLOGY**

This work was undertaken in accordance with current best practice, ClfA guidelines and a Written Scheme of Investigation (WSI) (Boyd 2024) drawn up in consultation with the Devon County Historic Environment Team (DCHET).

Any desk-based assessment aspect of this report follows the guidance as outlined in: *Standard and Guidance for Archaeological Desk-Based Assessment* (ClfA 2020a) and *Understanding Place: historic area assessments* (Historic England 2017).

The archaeological evaluation follows the guidance as outlined in: *Archaeologists Standards and Guidance for Archaeological Field Evaluation* (ClfA 2020b) and *Standard and Guidance for an archaeological Watching Brief* (ClfA 2020c). The evaluation trenches were laid out across the site, avoiding standing trees and targeting features identified by the GPS survey, located across the footprint of the proposed structures and areas likely to be disturbed by the proposed development (see Figure 5). The coordinates for the ends of each excavated trench can be found in Appendix 3.

2.0 ARCHAEOLOGICAL EVALUATION TRENCHING

2.1 INTRODUCTION

Archaeological evaluation trenching was undertaken on the 31st of July and 1st of August 2025 by SWARCH personnel. These evaluation trenches targeted anomalies identified in a previous GPR survey (Location Surveys Ltd. 2025) and were intended to evaluate a reasonable percentage and spread of the site (see Figure 4). Eight evaluation trenches, totalling 86.60m in length and each c.1.20m wide, were opened by a 360° tracked excavator to the level of the weathered natural; exposed archaeological features and deposits were cleaned and excavated by hand.

2.2 DEPOSIT MODEL

Across the northern enclosure, c.0.20m of mid-dark brown-grey friable clay-silt topsoil overlaid layers of made ground over a concrete slab; on the eastern side of this enclosure the made ground had been formed into a bank.

Across most of the southern enclosure there was a friable mid grey-brown clay-silt topsoil c.0.25m thick which overlaid a friable light-mid yellow-brown clay-silt c.0.10m thick, which in turn overlaid 0.20-0.30m of subsoil, similar to the topsoil but firmer and stonier. This overlaid a compact shillet-clay natural. At the southernmost end of the site, in Trench #2, there was c.0.70m of made ground (consisting of redeposited topsoil and subsoil) over a possible buried topsoil c.0.22m thick, with a diffuse horizon to a friable mid reddish-yellow brown clay-silt subsoil c.0.33m thick. This overlaid a softer, sandier deposit c.0.50m thick that overlaid the weathered shillet-clay natural. In the south-east corner of the site, at the south-east end of Trench #3, there were possible buried soil layers that contained Romano-British finds and had been heavily disturbed by tree roots.

From this it looks like the north enclosure had been cut down and terraced prior to modern surfaces being laid (and later buried). The southern end of the site includes deeper soil layers associated with the coombe along this side of the site. During the construction of the school and nursery to the south-west, soil removed from that site was stored and spread across the southern enclosure here, particularly along its southern edge. This appears to have raised ground levels along the southern side of the site by over 1m in places, most evident in Trench #2 (most of the redeposited material was topsoil). Buried soils to the south-east part of the site may seal or include earlier features and/or deposits.

Full context descriptions including depths can be found in Appendix 1; and sample sections in Appendix 4 (Figures 7 and 8).

2.3 RESULTS

The evaluation uncovered seven archaeological features within the southern part of the site (Figures 6-8). These included: four ditch segments (probably equating to three ditches); and an area of root-disturbed ground with a posthole, a possible stakehole and a spread. One of the ditches and the spread contained abraded Romano-British pottery, and a sherd of Romano-British pottery and a struck flint were recovered from the top of the ditch or the base of the subsoil immediately above. The northern part of the site contained a large concrete slab overlain by made ground. A charcoal-rich fill from the posthole was sampled; this produced a flint of c.115ml charcoal that may provide radiocarbon determinations as part of any further archaeological works for the site.

The following results are described by trench. A full context list with context descriptions can be found in Appendix 1; a complete finds list in Appendix 2; site drawings including plans and sections in Appendix 4; a sample list with details of the processed sample in Appendix 6; and supporting photographs in Appendix 7.

2.3.1 TRENCH #1

Trench #1 was located on the west side of the southern enclosure. It was aligned approximately north-north-west by south-south-east and measured 16.6×1.2m. At the northern end of the trench the topsoil was c.0.28m deep and overlaid c.0.08m of an upper subsoil, which overlaid c.0.19m of a lower subsoil, which overlaid archaeological features that cut the natural substrate; and at the southern end of the trench the topsoil overlaid <0.70+m of made ground (110). The trench contained three ditches: [103], [105] and [108] (Figures 6 and 7).

Ditch [103] (Figure 2) was located at the very northern end of the trench. It was aligned approximately north-north-east by south-south-west with a gentle western slope and a flat base. It was c.0.57+m wide and c.0.13m deep and contained a single fill, (104), which was cut by Ditch [105]. It appeared to terminate where it was cut by Ditch [105].

Ditch [105] (Figure 2) was aligned approximately west-north-west by east-south-east with a moderate north slope and a steep south slope and a gentle concave base. It was c.0.80m wide and c.0.30m deep. It cut fill (104) and contained two fills: lower fill (106), and upper fill (107), which contained a single sherd of abraded Romano-British pottery.

Ditch [108] was located to the middle of the trench, aligned approximately north-south. It had gentle slopes and a flat base. It was c.0.80m wide and c.0.11m deep with a single fill, (109), directly over which was a sherd of abraded Romano-British pottery and struck flint (assigned to the lower subsoil in this trench).

Made ground (110) was located at the southern end of the trench; it contained modern debris, including concrete and plastic. It was directly beneath the topsoils and over 0.70m deep on the western side of the trench; it may have filled a modern pit in this location.



FIGURE 2: DITCHES [103] AND [105]; VIEWED FROM THE WEST (1M SCALE).

2.3.2 TRENCH #2

Trench #2 was located on the south side of the southern enclosure. It was aligned north-west by south-east and measured c.2.6×1.2m. This trench was not fully excavated due to the thickness of the soils/made ground and evidence of a modern/active drainage pipe running across the middle of the trench. The topsoil was c.0.23m thick and overlaid c.0.46m of made ground (201) and (202) that contained modern finds and debris. These overlaid c.0.22m of a possible buried topsoil, which overlaid c.0.33m of subsoil, which in turn overlaid c.0.50m of a probable alluvium, which overlaid the natural substrate at a total depth of c.1.74m. It contained no archaeological features or deposits (Figures 6 and 7).

2.3.3 TRENCH #3

Trench #3 was located across the middle of the southern enclosure. It was aligned north-west by south-east and measured 27.1m×1.2m; the topsoil was c.0.26m deep and overlaid c.0.12m of subsoil that overlaid <0.30m of a second subsoil. At the south-east end of the trench the second subsoil overlaid <c.0.20m of layer/deposit (104) that contained abraded Romano-British pottery and overlaid posthole [307] and possible stakehole [305] that seemed to cut a disturbed natural (310). A terracotta land drain, clay-tile drain, plastic pipe in a gravel-filled trench, and a ceramic soil/foul waste-type pipe were also present crossing this trench (see Figures 3, 6 and 7).

Layer (304) Extended across the last c.4.20m of the south-east end of the trench. At the north-east end of the layer it was intermittent with no clear or defining cut. At the very south-east end of the trench it survived to a depth of c.0.20m. It was a friable mottled mid brown-grey clay-silt with moderate charcoal flecks. It contained a sherd of medieval (C13-C14) pottery and overlaid fills (306) and (309).

Possible stakehole [305] was sub-oval in plan with very gentle sides and a slight concave/pointed base. It was c.0.29m across and <0.08m deep and contained a single fill (306), which was identical to layer (304). It contained no finds.

Posthole [307] was oval in plan with near vertical to vertical sides with irregular concave breaks to a flattish pointed base. It was c.0.34m in diameter and 0.20m deep and contained two fills: lower/outer fill (308); and upper fill (309), a post-pipe with frequent charcoal flecks. These fills contained no finds, but fill (309) was sampled.

2.3.4 TRENCH #4

Trench #4 was located on the north-east side of the southern enclosure, relocated from its planned position to avoid both an extant drainage pipe and aid in determining the extent of ditch [105] in this direction. It measured 6.1×1.2m and was aligned north-north-west by south-south-east. Its stratigraphy was comparable to the north end of Trench #1. It contained a single ditch, [404] (Figures 6 and 7).

Ditch [404] was aligned approximately east-west. It had very gentle sides and a flat base. It was c.0.96m wide and c.0.08m deep and contained a single fill (405), which contained a single sherd of abraded Romano-British pottery.

2.3.5 TRENCH #5

Trench #5 was located on the north side of the southern enclosure and targeted an unidentified anomaly on the GPR survey. It was aligned east-west and measured 9.8×1.2m. Its stratigraphy was comparable to the north end of Trench #1. It contained a post-medieval terracotta land drain and a modern trench line with a gravel and plastic drain. It contained no significant archaeological features or deposits (see Figures 6 and 7).



FIGURE 3: POSTHOLE [307] AND THE SOUTH-EAST END OF TRENCH 3; VIEWED FROM THE SOUTH-EAST (1M SCALE).

2.3.6 TRENCH #6

Trench #6 was located to the south-west corner of the northern enclosure as an extension to Trench #7 due to limitations on the length of Trench #7. It was aligned north-west by south-east and measured 5.0×1.2m. Its topsoil was c.0.17m deep and it overlaid <0.25+m of redeposited natural (made ground). The made ground overlaid a c.0.38m deep stone “wall” edge that defined the southern edge of a concrete slab and abutted a made ground of <0.30m of redeposited topsoil. The “wall” *may* have defined an earlier structure that predated the concrete slab and was used to define the extent of the concrete slab; the edge of the slab contained an I-section RSJ set vertically into the concrete. Otherwise, the trench revealed no significant archaeological features or deposits (Figures 6 and 8).

2.3.7 TRENCH #7

Trench #7 was located on the west side of the northern enclosure. It was aligned approximately north-west by south-east and measured 12.0×1.2m. The topsoil was c.0.12-c.0.24m deep and it overlaid <0.16m of made ground, which overlaid the concrete slab. The concrete slab sloped down to the south across almost the entire trench. A slight lip defined the northern edge of the slab at the north end of the trench, where it abutted an aggregate yard surface. The slab surrounded a vertical I-section RSJ post. At the southern end of the trench a deposit of made ground consisting of redeposited natural corresponded to that identified in Trench #6. The trench contained no significant archaeological features or deposits (Figures 6 and 8).

2.3.8 TRENCH #8

Trench #8 was located on the east side of the northern enclosure. It was aligned north-east by south-west and measured 7.4m×1.2m. Its topsoil was c.0.20m deep and at the south-west end of the trench overlaid c.0.34m of made ground that overlaid the concrete slab. Towards the north-east end of the trench the topsoil overlaid c.1.02+m of made ground that overlaid the concrete slab. The eastern edge of the slab was c.2.25m from the north-east end of the trench and defined by concrete block-work. Steps in the slab were aligned approximately north-south. The slab surrounded a vertical I-section RSJ post. The trench revealed no significant archaeological features or deposits (Figures 6 and 8).

2.4 FINDS

Considering the proximity of the site to the village church and manor (presumably the medieval centre of the settlement), it is the general *paucity* of finds that is the most notable observation. It may indicate of a general lack of activity, a use that did not include much waste deposition (E.G. orchard?) on the site, or the result of terracing having removed material.

Other than concentrations of modern deposits and debris, which were discarded on site, the only finds on the site that were recovered included: ×3 modern machine-made bricks from topsoil (100); ×1 sherd (49g) of late medieval to early post-medieval pottery from topsoil (300); ×3 fragments (13g) of coke/clinker from topsoil (400); ×2 fragments (320g) of corroded ironstone, ×1 sherd (10g) of abraded probable Romano-British pottery and ×1 possible struck flint scraper (8g) from subsoil (101); ×2 fragments of a crenelated drain tile and a sherd (14g) of post-medieval pottery from the same drain; ×1 sherd (4g) of abraded Romano-British South Devon ware from Ditch Fill (107); ×2 sherds (9g) of medieval (C13-C14) pottery from spread (304); and ×1 sherd (2.5g) of abraded Romano-British Black Burnished ware from ditch fill (405). A sample of modern finds recovered from Trench #8 can be found in the finds concordance table in Appendix 2. Details of all of these finds can be seen in a full finds list in Appendix 2. Other modern finds that were encountered in made ground layers were discarded on site, including from the south end of Trenches #1, #2, #6, #7 and #8.

2.5 DISCUSSION

Anomalies identified by a previous GPR survey (Location Surveys Ltd.; Figure 4) corresponded to various phases of drainage and waste pipes as well as spreads associated with modern debris and a concrete slab. An electrical service was also identified, confirmed and avoided during the trenching (this was located in the south-east part of the northern area and associated with septic tanks along the boundary between the north and south areas). At the southern end of Trench #1, the modern deposit/made ground (110) corresponded to a spread-type anomaly identified by the GPR survey.

The ditches to the north and west of the southern area – [103], [105], [108] and [404] – appear to belong to one or more phases of earlier field-system or enclosure. That ditch [103] appears to be cut by, and terminate at, ditch [105] would suggest they respect one another and were close contemporaries. Although ditch [105] did not appear to continue into Trench #3, ditch [404] appeared to approximately align with it, and it may be that the ditch became very shallow or was irregular and inconsistent in form and depth along its length. Also, the presence of post-medieval drainage or ground disturbance in the approximate location at the north-west end of Trench #3 may have truncated earlier features. The finds from ditches [105] and [404] were similar, although ditch [404] produced a tiny sherd of BBW. Although undated, finds from above ditch [108] included a sherd of very abraded possible Romano-British pottery and a struck flint. It should be noted the small size and abraded character of the Romano-British pottery would suggest they are likely to be residual in these contexts.

At the south-east end of Trench #3 were an undated posthole [307] and an undated possible stakehole [305] and a spread (304), the latter producing a small, abraded sherd of Romano-British pottery. These features *may* belong to a structure or represent some other activity. If these were associated with any of the ditches, such as [108], it would place the area within a wider field-system or enclosure. The posthole contained a charcoal-rich fill that was sampled and processed, providing a flake of c.115ml of charcoal. This sample may be analysed further as part of subsequent archaeological works regarding the proposed development.

The depth of modern made ground along the southern edge of the site, as identified in Trench #2 may have engineering implications for any future development.

The land drainage identified crossing the southern area included four different forms of drain and representing up to four different phases of activity, though some of the pipes may have been contemporary but with different specific function. Most of these pipes were relatively or very modern and likely associated with either drainage in general or the septic tanks located along the boundary between the north and south parts of the site. However, the ridged terracotta tile drain is probably earliest and dating to the 19th century. The trench line for the plastic pipe with gravel in Trench #5 equated to the north-south aligned segment of the possible rectilinear anomaly identified in the GPR survey.

The northern part of the site was dominated by a concrete slab that extended approximately 11.5m by 14m+ across the area. This slab sloped gently down to the south and included vertical I-section RSJ posts, of which three were located during in the evaluation. At the south-east end of Trench #6 modern made ground overlaid the natural substrate. Of some interest is that the line of the eastern edge of the slab and the southern edge of the slab approximately aligned with an extant standing granite stone gatepost. Also, the southern edge of the slab is poured against a thin wall of rough stone that may define the original extent of the enclosure on this part of the site as defined on the historic mapping. Historic OS maps show a small building, with a longer structure with an open side extending to the west, flanking the lane leading to the church. A small yard was attached to these structures, and the concrete slab probable represents a yard surface (with structures or fence line) attached to those structures.

The bank overlying the eastern edge of the slab contained polystyrene at the depth of the slab, and this whole area appears to have been landscaped when the slab was buried. Septic tanks buried along the southern edge of the northern area will have resulted in large, excavated pits and possible trench/service lines along this edge of the northern area. Given the apparent terracing and level of modern disturbance in the northern part of the site, it seems probable that any potential archaeology in this area will have been long since truncated and destroyed.

3.0 CONCLUSION

The site lies on the north-east side of Aveton Gifford, immediately south-east of Court Barton and c.50m south-east of St Andrew's Church, at Pulleys Corner. Although now a garden, the site is within an enclosure recorded as meadow on the c.1840 Aveton Gifford tithe apportionment and recorded By the Devon HLC as probable medieval to post-medieval *Barton fields*. The tithe map depicts a building and enclosure/yard at the north end of the site. Court Barton to the north is recorded as a 17th century farmhouse on the site of an earlier manor (MDV4874; MDV51243). The site has been subject to groundworks associated with modern drainage, septic tanks, a concrete structure and parking area, and green waste disposal. Some modern drainage and services were identified by an earlier ground penetrating radar (GPR) survey (Location Surveys Ltd).

Eight evaluation trenches, totalling c.87m, were excavated across the site. These targeted anomalies identified on the previous GPR survey and general site coverage. In the southern part of the site the evaluation revealed four ditches, and an area with a spread, an associated posthole and a possible stakehole. The spread contained one sherd of probable Romano-British pottery and the ditches either contained or were associated with Romano-British pottery and a struck flint; all the Romano-British pottery was small and abraded, indicating it was residual. A large number of post-medieval and modern drains crossed this part of the site.

In the northern part of the site the evaluation revealed modern made ground and the concrete slab for a yard area associated with structures along the lane shown on historic mapping. This area appears to have been terraced and built up and it is likely that any archaeological features will have been truncated or destroyed.

3.1 RECOMMENDATIONS

Given the results of this evaluation, it is recommended that as part of any planning conditions for proposed development of this site that further archaeological monitoring would be appropriate. It is felt that a strip, map and sample (SMS) exercise, of an area of perhaps c.10m² area around the north half of Trench #1 and the south-east end of Trench #3, with the option to extending depending on results, would determine relationships, extent and provide adequate dating of the identified archaeological resource/features. However, the location and line of overhead cables may limit the extent of investigation.

4.0 BIBLIOGRAPHY & REFERENCES

Published Sources:

Chartered Institute of Field Archaeologists 2020a: *Standard and Guidance for Historic Environment Desk-based Assessment*.

Chartered Institute for Archaeologists 2020b: *Archaeologists Standard and Guidance for Archaeological Field Evaluation*.

Chartered Institute for Archaeologists 2020c: *Standard and Guidance for an Archaeological Watching Brief*.

Lysons, S. and Lysons, D. 1822: *Magna Britannia Volume 6 Devon*. London: Cadell and Davies.

Historic England 2017: *Understanding Place: historic area assessments*.

Soil Survey of England and Wales 1983: *Legend for the 1:250,000 Soil Map of England and Wales (a brief explanation of the constituent soil associations)*.

Unpublished Sources:

Boyd, N. 2024: *Land at Court Barton, Aveton Gifford, Bigbury, Devon: Written Scheme of Investigation*. SWARCH Report No.: AGCB25WSiv2.

Location Surveys Ltd. 2025: *Court Barton Meadow, AG – Utility Survey Report*.

Websites:

British Geological Survey 2025: *Geology of Britain Viewer*.

<http://mapapps.bgs.ac.uk/geologyofbritain/home.html>

Devon Historic Environment Record (HER) and HLC 2025: *Environment Viewer*

<https://www.devon.gov.uk/historicenvironment/the-devon-historic-environment-record/> and

<https://www.heritagegateway.org.uk/gateway/>

Environment Agency 2025: *LiDAR, Digital Surface Model (2021)*.

<https://environment.data.gov.uk/DefraDataDownload/?Mode=survey>

Devon Heritage Centre (DHC) – Devon Archives and Local Studies Service

Aveton Gifford Tithe Apportionment, c.1840

Aveton Gifford Tithe Map, 1841

Ordnance Survey 1st edition, 25 inch map, Sheet: Devon CXXXII.5, surveyed 1885, published 1886.

Ordnance Survey 2nd edition, 25 inch map, Sheet: Devon CXXXII.5, revised 1904, published 1906.

English Heritage – 1946 Aerial Photography Archives

LAND AT COURT BARTON, AVETON GIFFORD, SOUTH HAMS, DEVON

APPENDIX 1: CONTEXT LIST

CONTEXT	DESCRIPTION	RELATIONSHIPS	DEPTH/ THICKNESS	SPOT DATE	
TRENCH #1					
(100)	<i>Topsoil</i>	Mid grey-brown, friable clay-silt. Modern finds.	Overlaid (101)(110)	c.0.28m	C21
(101)	<i>Subsoil</i>	Light-mid yellow-brown, firm clay-silt with moderate shilley stones. Probable abraded sherd of RB pottery and struck flint possibly from truncated upper fill of Ditch [108].	Overlaid (107)(109); Overlain by (111)	c.0.19m	-
(102)	<i>Natural</i>	Light brown-yellow, compact shilley clay, weathered natural.	Cut by [103][108]	Below c.0.59m	-
[103]	<i>Cut of Ditch</i>	Located at the northern end of Trench #1. Linear ditch aligned approximately north-north-east by south-south-west with a gentle western slope and a flat base, c.0.57+m wide, 1 fill. Terminated in or at Ditch [105].	Cut (102); Contained (104)	c.0.13m	-
(104)	<i>Fill of Ditch</i>	Light yellow-brown, friable clay-silt, moderate shillet fragments. No finds.	Fill of [103]; Cut by [105]	c.0.13m	-
[105]	<i>Cut of Ditch</i>	Located at the northern end of Trench #1. Linear ditch aligned approximately west-north-west by east-south-east with a moderate north slope and a steep south slope and a gentle concave base, c.0.80m wide, 2 fills. Possibly equates to Ditch [404].	Cut (104); Contained (106)(107)	c.0.30m	-
(106)	<i>Fill of Ditch</i>	Lower Fill; light yellow-brown, soft-friable clay-silt, mottled with gritty shillet washed in, mottled Natural. No finds.	Fill of [105]; Overlain by (107)	c.0.06-0.07m	-
(107)	<i>Fill of Ditch</i>	Upper fill; mid-dark brown-grey, friable clay-silt with occasional shillet. Pottery find, single sherd of abraded RB South Devon ware.	Fill of [105]; Overlaid (106); Overlain by (101)	c.0.23m	RB or later
[108]	<i>Cut of Ditch</i>	Located across the middle of Trench #1. Linear ditch aligned approximately north-south with gentle slopes and a flat base, c.0.80m wide, 1 fill.	Cut (102); Contained (109)	c.0.11m	-
(109)	<i>Fill of Ditch</i>	Light grey-yellow, friable clay-silt, similar to (106), with moderate shillet fragments and occasional stone and charcoal flecks. No finds, but possible RB pottery and struck flint from (101) directly above.	Fill of [108]; Overlain by (101)	c.0.11m	-
(110)	<i>Made-ground</i>	Located at the southern end of Trench #1. Probably filling a modern pit/dump or levelling. Light grey, compact shillet and stone with modern debris including concrete, plastic and general debris, 1.20+m wide. This should probably be assigned as the fill of a cut, cutting (111).	Overlain by (100)	c.0.70+m	C20-C21
(111)	<i>Subsoil</i>	<i>Subsoil</i>	Overlaid (102); Overlain by (100)	c.0.08m	-
TRENCH #2					
(200)	<i>Topsoil</i>	Light yellow-brown, friable clay-silt with gritty inclusions.	Overlaid (201)	c.0.23m	C21
(201)	<i>Made-ground</i>	Light brown-grey, friable clay-silt, a redeposited subsoil with moderate modern material including metal wire and rope.	Overlaid (202); Overlain by (200)	c.0.20m	C21
(202)	<i>Made-ground</i>	Light brown-grey, friable clay-silt with shillet and clay and moderate modern debris, redeposited shillet and clay Natural.	Overlaid (203); Overlain by (201)	c.0.26m	C21
(203)	<i>Buried Topsoil</i>	Light yellow-brown/brown-yellow, friable clay-silt with some reddish-yellow (orange) veiny mottling and very occasional/few stones. Diffuse horizon to (204). No finds.	Overlaid (204); Overlain by (202)	c.0.22m	-
(204)	<i>Subsoil</i>	Mid reddish-yellow (orangey) brown, friable clay-silt with moderate shillet fragments and stones. No finds.	Overlaid (205); Overlain by (203)	c.0.32m	-
(205)	<i>Subsoil</i>	Probable alluvium. Light yellow-brown, soft silt-clay loam with moderate-occasional grit and stone and becoming gradually less stony towards its base. No finds.	Overlaid (206); Overlain by (204)	c.0.51m	-
(206)	<i>Natural</i>	Light yellow- reddish-yellow (yellow-orange), firm-compact weathered shilley-clay.	Overlain by (205)	Below c.1.74m	-
TRENCH #3					
(300)	<i>Topsoil</i>	As (100).	Overlaid (301)	c.0.26m	C21
(301)	<i>Subsoil</i>	As (111).	Overlaid (302); Overlain by (300)	c.0.08-0.14m	-

LAND AT COURT BARTON, AVETON GIFFORD, SOUTH HAMS, DEVON

(302)	<i>Subsoil</i>	As (101). But with the lower half at the south-east end of the trench becoming more sandy-silty/soily, from approximately half way along the trench moving south-east.	Overlaid (304); Overlain by (301)	c.0.20-0.31m	-
(303)	<i>Natural</i>	As (102).	Cut by [305]; Overlain by (310)	Below c.0.65-0.72m	-
(304)	<i>Spread</i>	Mottled mid brown-grey, friable clay-silt with moderate charcoal flecks, appears very root disturbed. Contained a body sherd of C13-C14 pottery. Started as intermittent at its north-west end and became more consistent towards the trenches south-east end. No clearly defined cut associated with it	Overlaid (306){309}; Overlain by (302)	<0.20m	Prehistoric
[305]	<i>Cut of possible Stakehole</i>	Located at the south-east end of Trench #3, within the section edge. Sub-oval in plan with very gentle slopes to a gentle pointed base, c.0.29m across, 1 fill. Possible root disturbance.	Cut (303); Contained (306)	<0.08m	-
(306)	<i>Fill of possible Stakehole</i>	Mottled mid brown-grey, friable clay-silt with moderate charcoal flecks, as (304). No finds.	Fill of [305]; Overlain by (304)	<0.08m	-
[307]	<i>Cut of Posthole</i>	Located at the south-east end of Trench #3. Oval in plan with near vertical to vertical sides with irregular concave breaks to a flattish pointed base, c.0.34m in diameter, 2 fills.	Cut (303); Contained (308){309}	0.20m	-
(308)	<i>Fill of Posthole</i>	Lower fill / at the upper edges of the feature. Mottled light-mid yellow-brown, friable-firm silt-clay. No finds, similar to (310).	Fill of [307]; Overlain by (309)	c.0.11m	-
(309)	<i>Fill of Posthole</i>	Upper fill / possible post-pipe. Dark brown-grey, friable clay-silt with frequent-moderate charcoal flecks. Sampled (Sample 1). No finds.	Fill of [307]; Overlaid (308); Overlain by (304)	0.20m	-
(310)	<i>Disturbed Natural</i>	Light brown-yellow, compact clayey natural with root disturbance and possible intrusive charcoal flecks and mineralisation. Located at the south-east end of Trench #3 and identifiable in the excavation of Posthole [307] to a depth of c.0.11m. No finds.	Overlaid (303); Cut by [307]	c.0.11m	-
TRENCH 4					
(400)	<i>Topsoil</i>	As (100).	Overlaid (401)	c.0.25m	-
(401)	<i>Subsoil</i>	As (111).	Overlaid (402); Overlain by (400)	c.0.09m	-
(402)	<i>Subsoil</i>	As (101).	Overlaid (405); Overlain by (401)	c.0.22m	-
(403)	<i>Natural</i>	As (102).	Cut by [404]	Below c.0.58m	-
[404]	<i>Cut of Ditch</i>	Linear ditch aligned approximately east-west with very gentle sides and a flat base, c.0.96m wide, 1 fill. Possibly equates to Ditch [105].	Cut (403); Contained (405)	c.0.08m	Prehistoric
(405)	<i>Fill of Ditch</i>	Mid yellow-brown mottled with reddish-yellow (orange), friable clay-silt with occasional shillet fragments. A single sherd of RB BBW pottery.	Fill of [404]; Overlain by (402)	c.0.08m	Prehistoric
TRENCH 5					
(500)	<i>Topsoil</i>	As (100).	Overlaid (501)	c.0.25m	-
(501)	<i>Subsoil</i>	As (111).	Overlaid (502); Overlain by (500)	c.0.11m	-
(502)	<i>Subsoil</i>	As (101).	Overlaid (505); Overlain by (501)	c.0.22m	-
(503)	<i>Natural</i>	As (102).	Overlain by (502)	Below c.0.62m	-
TRENCH 6					
(600)	<i>Topsoil</i>	Mid-dark brown-grey, friable clay-silt.	Overlaid (601)	c.0.28m	C21
(601)	<i>Made-ground</i>	Redeposited Natural. Light yellow-white, compact clayey shillet.	Overlaid (602){604}; Overlain by (600); Equated to (702)	<0.25m	C20-C21
(602)	<i>Made-ground</i>	Redeposited topsoil. Light yellow-brown, friable clay-silt, frequent shillet fragments and modern debris.	Abutted {604}; Overlain by (601)	c.0.31m	C20-C21
(603)	<i>Natural</i>	Light white-grey, compact-indurate shillet rock.	Overlain by (602){604}	Below c.0.54m	-
{604}	<i>Wall</i>	Shillet slab stone wall that defined the southern edge of Concrete Slab (605)	Abutted (602); Abutted/Overlain by (605)	0.38m	-
(605)	<i>Layer</i>	Concrete slab floor. Solid, light greyish-white with a I-section RSJ post set in a blue gravelly concrete.	Abutted/Overlaid {604}; Equated to (704){806}	-	C20-C21
TRENCH 7					

LAND AT COURT BARTON, AVETON GIFFORD, SOUTH HAMS, DEVON

(700)	<i>Topsoil</i>	As (600).	Overlaid (702)	c.0.12-0.24m	C21
(701)	<i>Made-ground</i>	Redeposited subsoil and Natural mix. Light brown-yellow, compact silt clay with shillet stones and occasional medium rocks.	Overlaid (704); Overlain by (702)	<0.16m	C21
(702)	<i>Made-ground</i>	As (601).	Overlaid (701); Overlain by (700); Equated to (601)	Below c.0.28m	C20-C21
(703)	<i>Made-ground</i>	Hard-core rubble debris, compacted brick and debris as probable levelling/bedding layer to the slab at its northern end. Possibly earlier rough hard-standing.	Overlain by (704)	-	C20-C21
(704)	<i>Layer</i>	As (605). Sloped gently down to the south. Had a raised lip at its northern edge. . The slab surrounded a I-section RSJ post set in blue gravelly concrete.	Overlaid (703); Overlain by (701); Equated to (605)(806)	Below c.0.25m	-
TRENCH 8					
(800)	<i>Topsoil</i>	As (600).	Overlaid (801)	c.0.20m	C21
(801)	<i>Made-ground</i>	Light brown-yellow, compact silt clay with shillet stones. Similar to- or the same as (701). Rather dirty with inclusions.	Overlaid (802); Overlain by (800)	c.0.10-0.25m	C21
(802)	<i>Made-ground</i>	Dark mottled blackish-grey, compact clay-silt with rubble and modern finds.	Overlaid (803); Overlain by (801)	<c.0.40m	C21
(803)	<i>Made-ground</i>	Very compact redeposited Natural clayey shillet. Light brown-yellow/whitish-yellow.	Overlaid (804); Overlain by (802)	c.0.25m+	C21
(804)	<i>Made-ground</i>	Redeposited Natural clay-shillet with subsoil mixed with frequent rubble. Finds on site included nails, rubber, concrete, tarmac, plastic, polystyrene, twine, Fe pipe, notched slate, white refined earthenware and an empty bank account wallet. A sample of finds were recovered and recorded.	Overlaid (805); Overlain by (803)	c.0.35m	C21
(805)	<i>Spread</i>	Dark grey, soft clay-silt.	Overlaid (806); Overlain by (804)	c.0.05,	C20-C21
(806)	<i>Layer</i>	As (605). The eastern edge of the slab was c.2.25m from the north-east end of the trench and defined by concrete block-work. Steps in the slab were aligned approximately north-south. The slab surrounded a I-section RSJ post set in blue gravelly concrete.	Overlain by (805); Equated to (605)(704)	Below c.0.28-1m	C20-C21
TRENCH DIMENSIONS					
<p>TRENCH #1 aligned north-north-west by south-south-east on the west side of the southern area, 16.60m long, 1.20m wide TRENCH #2 aligned north-west by south-east on the south side of the southern area, 2.60m long, 1.20m wide TRENCH #3 aligned north-west by south-east across the middle of the southern area, 27.10m long, 1.20m wide TRENCH #4 aligned north-north-west by south-south-east on the north-east side of the southern area, 6.10m long, 1.20m wide TRENCH #5 aligned north-east by south-west on the north side of the southern area, 9.80m long, 1.20m wide TRENCH #6 aligned north-west by south-east in the south-west corner of the northern area, 5m long, 1.20m wide TRENCH #7 aligned north-west by south-east on the west side of the northern area, 12m long, 1.20m wide TRENCH #8 aligned north-east by south-west on the east side of the northern area, 7.40m long, 1.20m wide</p>					

LAND AT COURT BARTON, AVETON GIFFORD, SOUTH HAMS, DEVON

APPENDIX 2: FINDS CONCORDANCE

Context	Notes	POTTERY			OTHER			DATE
		Sherds	Wgt. (g)	Notes	Frgs.	Wgt. (g)	Notes	
(100)	Topsoil				-	-	3 modern machine-made whole engineering bricks, discarded	C21
(101)	Subsoil, directly over [108]	1	10	Romano-British?, highly abraded	1	8	Scraper, nodular source, primary-secondary flake, retouched	Bronze Age
(101)	Subsoil, directly over [106]				2	320	Iron stone and corroded material	-
(107)	Ditch Fill	1	4	Romano-British South Devon ware, jar rim, highly abraded				Prehistoric (Iron Age)
(300)	Topsoil	1	49	Post-medieval South Devon ware, internal green glaze, abraded				Post-Medieval
(304)	Spread	2	9	Medieval coarseware, C13-C14				Prehistoric (Bronze Age)
-	Drain in Trench 3	1	14	Post-medieval stoneware, C18?, flagon	2	50	Crenelated drain tile sample pieces	Post Medieval
(400)	Topsoil				3	13	Clinker type slag/ coke	-
(405)	Ditch Fill	1	2.5g	Romano-British BBW, body sherds, internal (wheel) turning marks				Prehistoric (Iron Age)
-	Trench 6	-	-		-	-	A mix of 20 th and 21 st century finds were located in the made-grounds across these trenches including: bricks, polystyrene, a plastic wallet, bailing twine, Fe objects such as nails, and also a large notched slate. A sample was recovered and recorded from Made ground (804), below	C21
-	Trench 7	-	-		-	-		
-	Trench 8	-	-		-	-		
(804)	Made-ground	2	5	White Refined Earthenware (WRE with Blue Transfer Print (BTP)), late/cheaper examples	1	1412	Late C18-eC19 old frogged brick	C21
					1	777	Cut concrete tile/slab fragment	
					1	921	Large slate fragment with large hole, c.16.5cmx14.5cmx3cm with a hole 4cm to 6cm in diameter	
					1	13	Corroded Fe nail, square	
					1	9	Fe nail/pin with plastic washer/cap	
					1	2	Plastic washer/cap for nail/pin	
					1	135	Very corroded Fe long bolt/bar with nut	
					1	24	Tarmac sample fragment	
					1	51	Concrete mortar sample fragment	
					1	2	Polystyrene sample fragment	
					1	2	Small nail notched slate fragment	
	Totals:	9	91		19	3348		

APPENDIX 3: TRENCH COORDINATE TABLE

Trench No.	1 st point			2 nd point		
	Trench End	X (Easting)	Y (Northing)	Trench End	X (Easting)	Y (Northing)
1	N	269483.064	47735.924	S	269484.075	47719.352
2	W	269494.440	47717.605	E	269497.154	47717.295
3	NW	269491.790	47735.248	SE	269515.421	47722.010
4	N	269504.540	47737.923	S	269505.179	47731.865
5	WSW	269494.567	47737.494	ENE	269504.051	47740.104
6	NW	269487.93	47760.45	SE	269490.23	47755.85
7	NW	269484.659	47770.301	SE	269491.048	47760.114
8	SW	269493.803	47767.928	NE	269499.899	47772.019

APPENDIX 4: SITE PLANS AND SECTION DRAWINGS

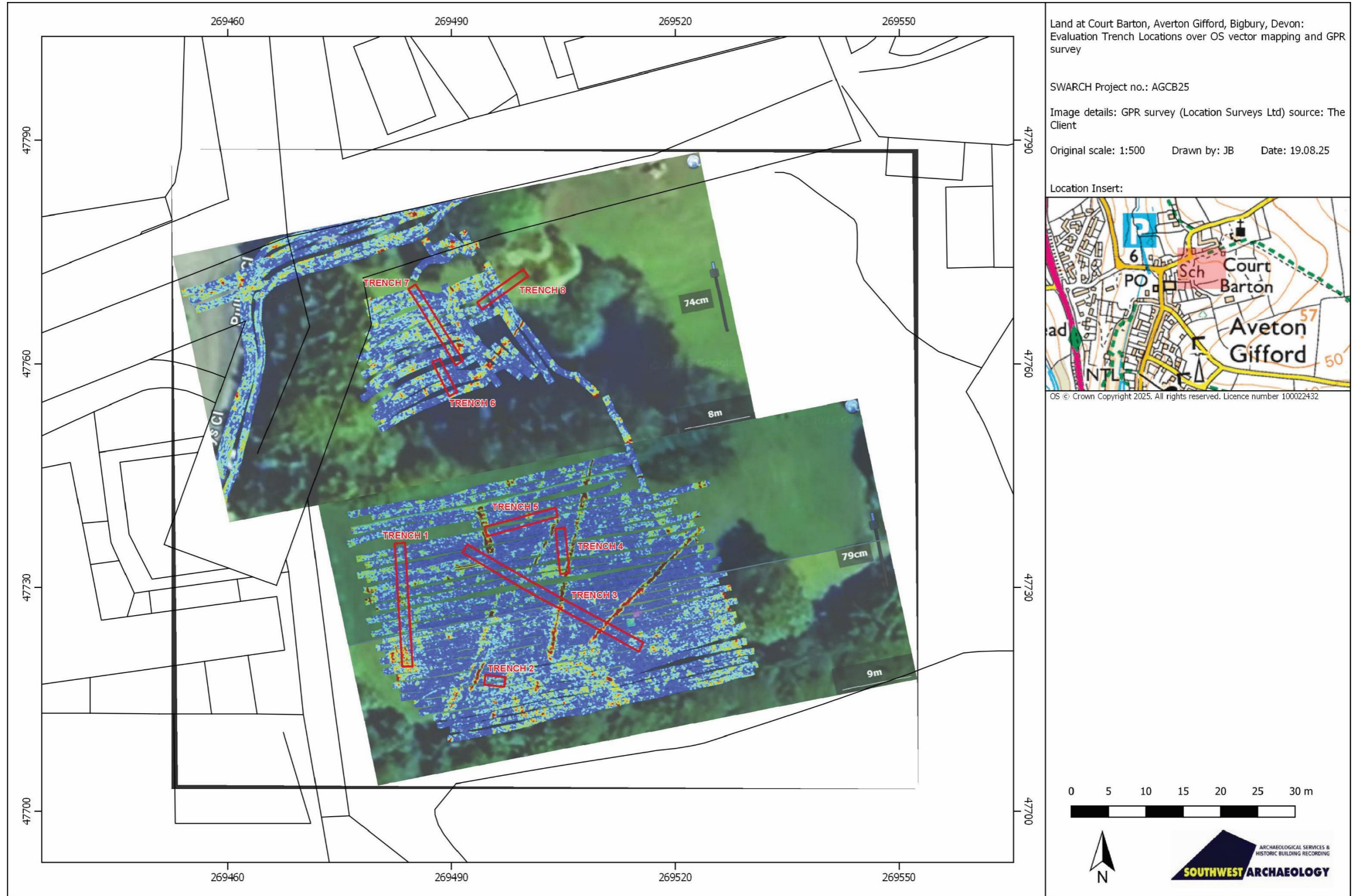


FIGURE 4: EVALUATION TRENCH PLAN OVER GPR SURVEY (GPR SURVEY SOURCE: LOCATION SURVEYS LTD., SUPPLIED BY THE CLIENT).

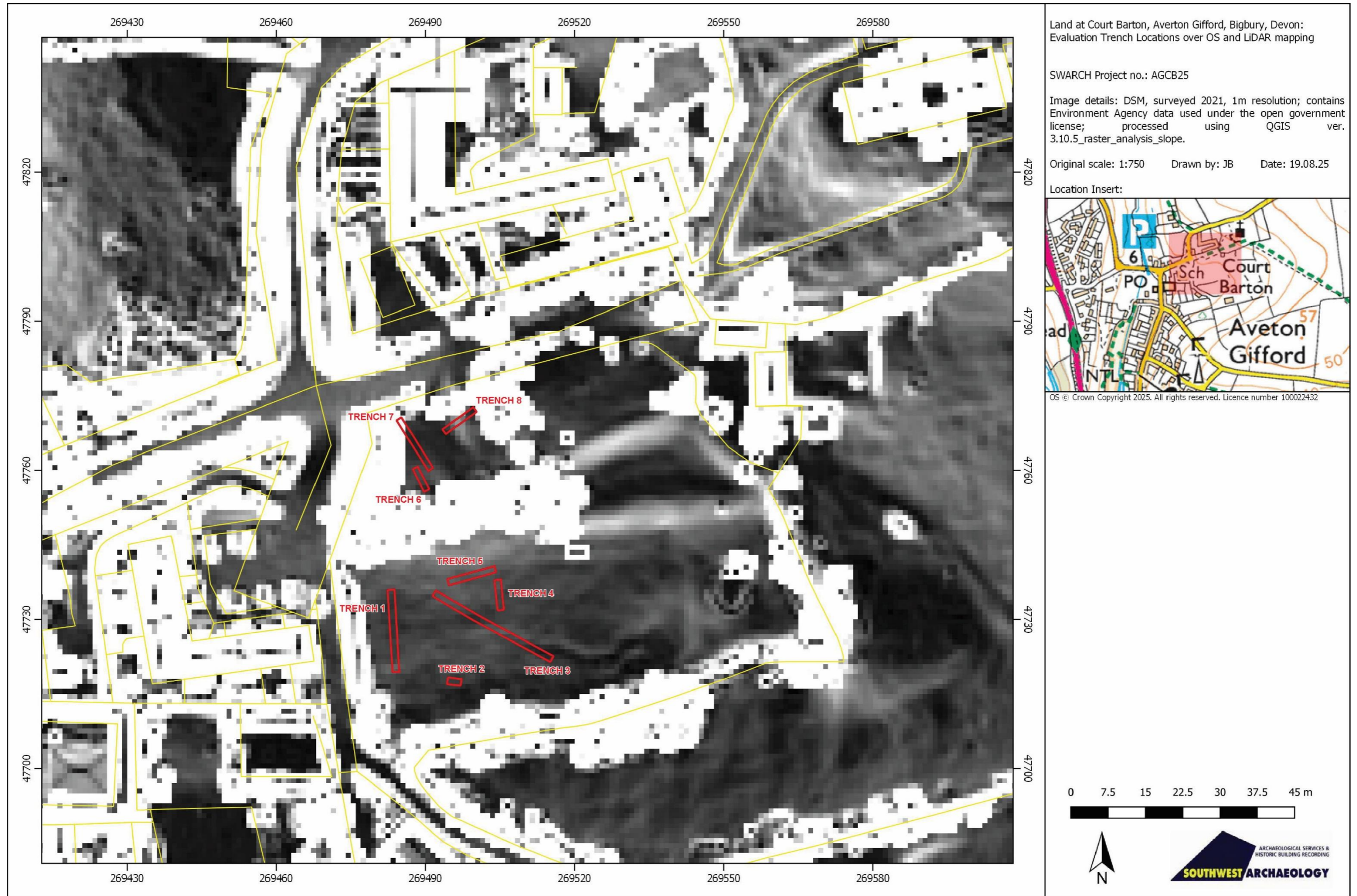


FIGURE 5: EVALUATION TRENCH PLAN; OVERLYING LiDAR IMAGE OF SITE (LiDAR DATA USED UNDER THE OPEN GOVERNMENT LICENSE V3.0).

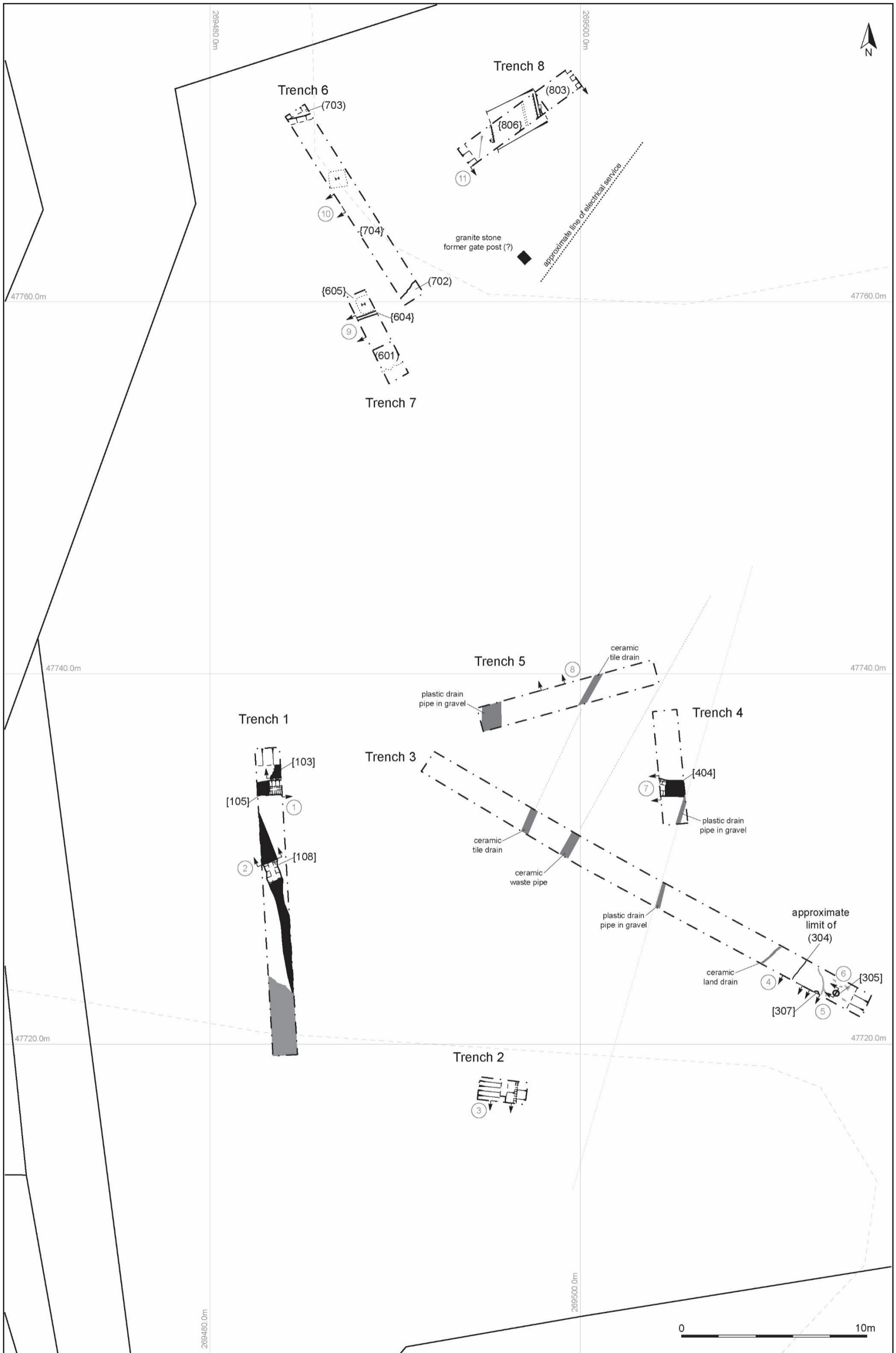


FIGURE 6: TRENCH AND FEATURE PLAN, SHOWING SECTION AND FEATURE LOCATIONS.

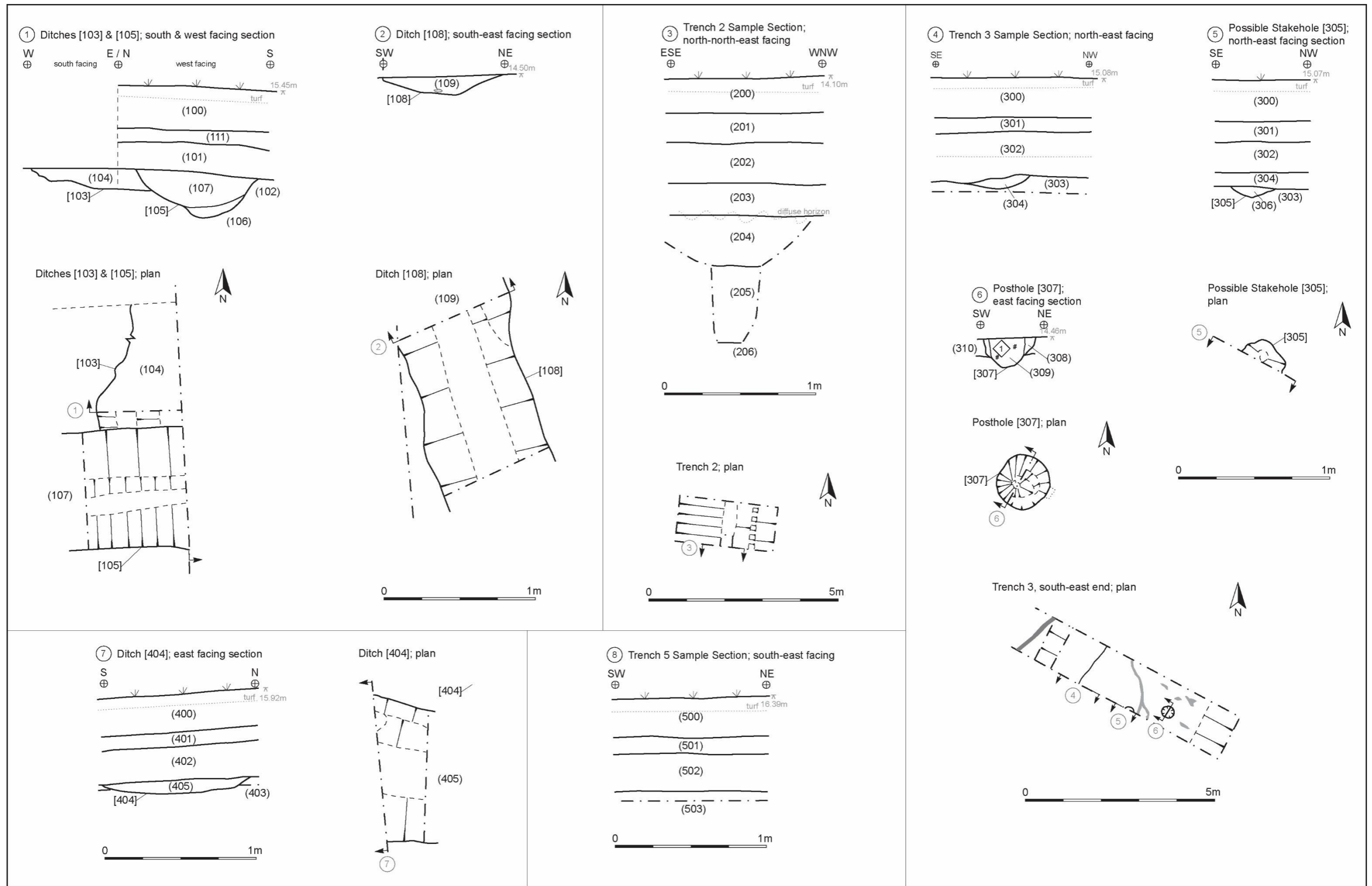


FIGURE 7: SECTION DRAWINGS AND FEATURE PLANS FOR TRENCHES #1 TO #5.

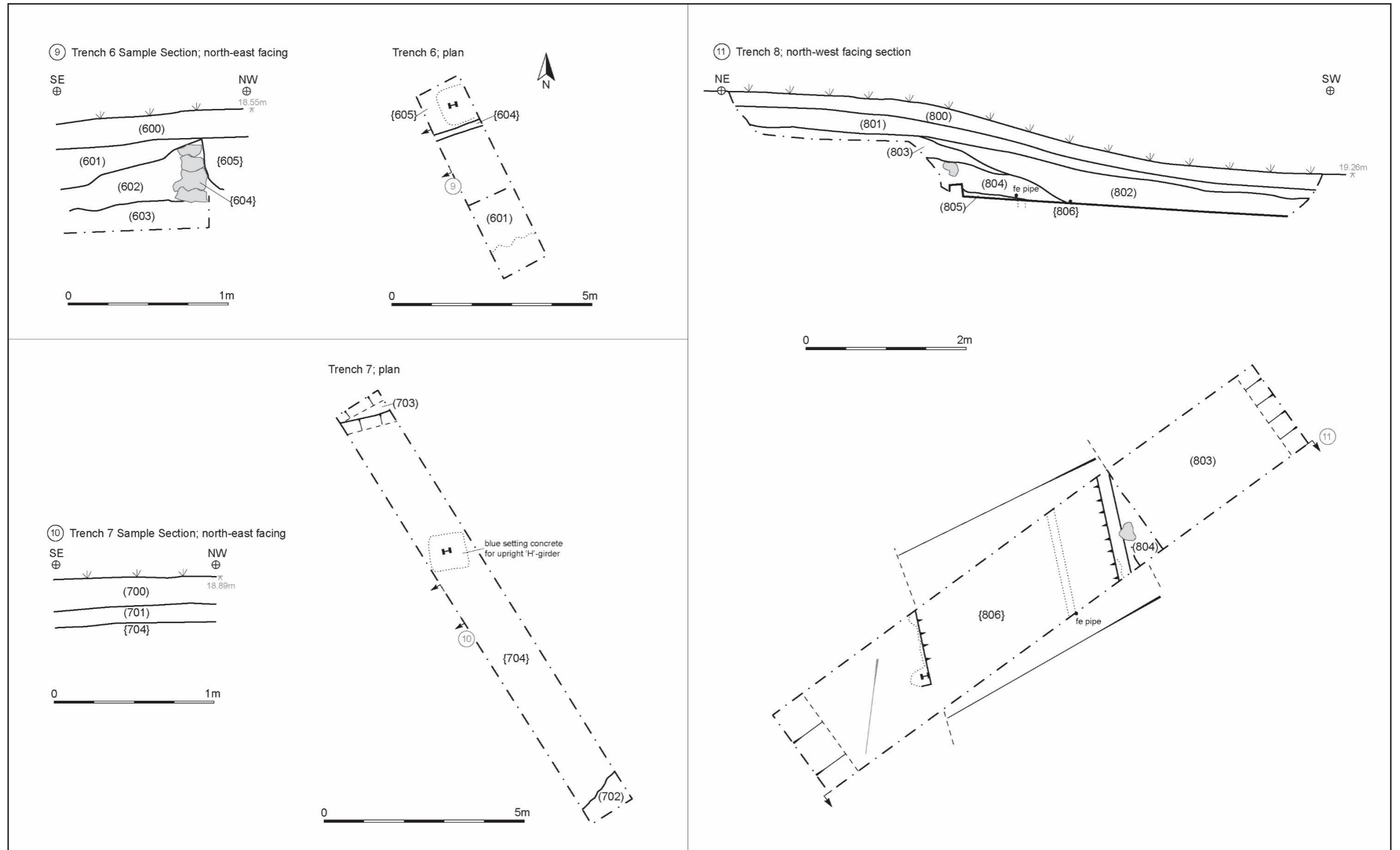


FIGURE 8: SECTION DRAWINGS AND FEATURE PLANS FOR TRENCHES #6 TO #8.

APPENDIX 5: ADDITIONAL SOURCES ASSOCIATED WITH SITE BACKGROUND (SECTION 1.4)

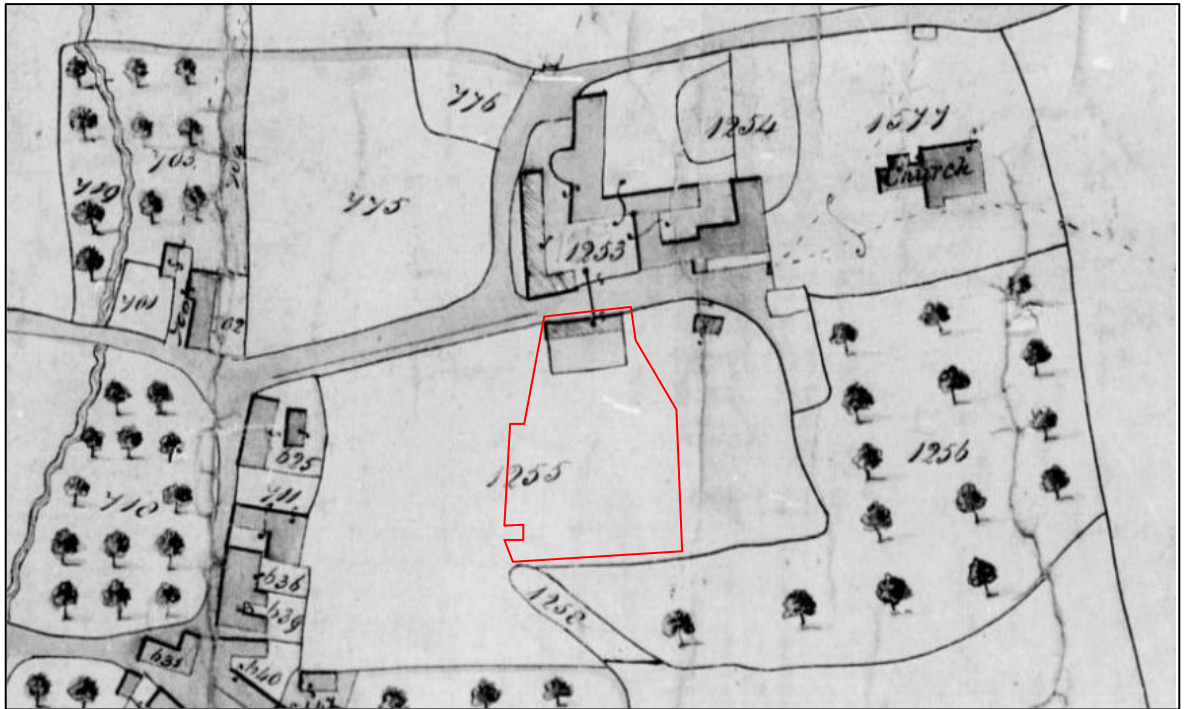


FIGURE 9: EXTRACT FROM THE AVETON GIFFORD TITHE MAP, 1841; THE APPROXIMATE SITE LOCATION IS SHOWN (TNA).

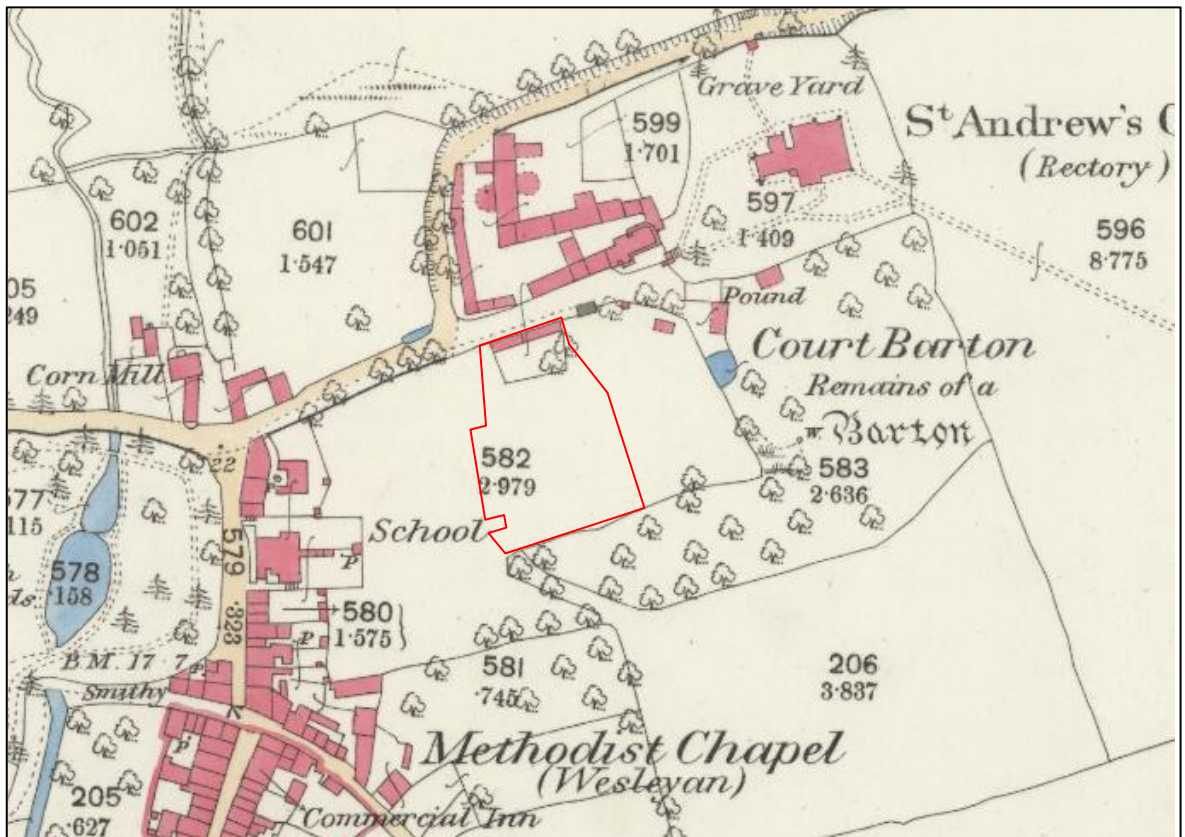


FIGURE 10: EXTRACT FROM THE ORDNANCE SURVEY 1ST EDITION MAP, c.1886; THE APPROXIMATE SITE LOCATION IS SHOWN (MAP REPRODUCED WITH THE PERMISSION OF THE NATIONAL LIBRARY OF SCOTLAND).



FIGURE 11: AERIAL IMAGERY OF THE SITE FROM 1999; INOTERRA LTD. & BLUESKY.

APPENDIX 6: BULK SAMPLE CONCORDANCE

SAMPLE NUMBER	CONTEXT	DESCRIPTION	SAMPLE SIZE	% PROCESSED	COMMENTS AND RADIOCARBON DETERMINATION SUMMARY
1	(309)	Fill of posthole [307], charcoal rich clay-silt fill. 50% of feature sampled	5 litres	100%	c.115ml of fine to small charcoal flecks/fragments recovered in flot; included small round wood fragments and possible small seeds/grains, but mostly probably fine burnt wood. Residue of c.0.02l of small stones (shillet and quartz). Radiocarbon determinations may await probable further archaeological site works.

APPENDIX 7: SUPPORTING PHOTOGRAPHS

TRENCH #1



1. DITCH [103]; VIEWED FROM THE SOUTH (1M SCALE).



2. DITCHES [103] AND [105]; VIEWED FROM THE WEST (1M SCALE).



3. DITCH [105]; VIEWED FROM THE EAST (1M SCALE).



4. DITCH [108]; VIEWED FROM THE SOUTH-EAST (1M SCALE).



5. DITCH [108] AND THE NORTH END OF TRENCH #1; VIEWED FROM THE SOUTH (1M SCALE).



7. SPREAD/MADE GROUND (110); VIEWED FROM THE NORTH (1M SCALE).



6. DITCH [108]; VIEWED FROM THE NORTH-WEST (1M SCALE).



8. TRENCH #1, POST-EXCAVATION; VIEWED FROM THE SOUTH (1M SCALE).



9. EXAMPLES OF MODERN FINDS FROM (110) AND TRENCH #1 TOPSOIL (NO SCALE).



11. TRENCH #1 AND WESTERN SIDE OF SOUTHERN AREA; VIEWED FROM THE SOUTH (NO SCALE).



10. TRENCH #1, POST-EXCAVATION; VIEWED FROM THE NORTH (1M SCALE).



12. TRENCH #1, POST BACK-FILLING; VIEWED FROM THE NORTH (NO SCALE).

TRENCH #2



13. TRENCH #2, POST-EXCAVATION; VIEWED FROM THE WEST-NORTH-WEST (1M SCALE).



15. TRENCH #2, POST-EXCAVATION; VIEWED FROM THE NORTH-EAST (1M SCALE).



14. TRENCH #2, SECTION; VIEWED FROM THE NORTH-NORTH-EAST (1M SCALE).



16. VIEW ACROSS TRENCH #2 ON LINE OF DRAINS; VIEWED FROM THE SOUTH-WEST (NO SCALE).

TRENCH #3



17. CLAY LAND DRAIN AT EAST END OF TRENCH #3; VIEWED FROM THE WEST-SOUTH-WEST.



18. PLASTIC DRAIN IN TRENCH #3; VIEWED FROM THE SOUTH-WEST (NO SCALE).



19. DETAIL OF PLASTIC PIPE IN TRENCH #3; VIEWED FROM THE WEST (NO SCALE).



20. CERAMIC WASTE PIPE IN TRENCH #3; VIEWED FROM THE NORTH-EAST (NO SCALE).



21. LINE OF CERAMIC WASTE PIPE IN TRENCH #3; VIEWED FROM THE NORTH-EAST (NO SCALE).



23. LINE OF TILE DRAIN IN TRENCH #3; VIEWED FROM THE NORTH-EAST (NO SCALE).



22. TILE DRAIN IN TRENCH #3; VIEWED FROM THE NORTH-EAST (NO SCALE).



24. SOUTH-EAST END OF TRENCH #3 WITH POSTHOLE [307]; VIEWED FROM THE EAST (1M SCALE).



25. POSSIBLE STAKEHOLE [305]; VIEWED FROM THE NORTH-EAST (1M SCALE).



27. SOUTH-EAST END OF TRENCH #3; VIEWED FROM THE NORTH (1M SCALE).



26. TRENCH #3 SAMPLE SECTION; VIEWED FROM THE NORTH-EAST (1M SCALE).



28. SOUTH-EAST END OF TRENCH #3; VIEWED FROM THE EAST (1M SCALE).



29. POSTHOLE [307], FULLY EXCAVATED; VIEWED FROM THE SOUTH-EAST (1M SCALE).



31. TRENCH #3, POST-EXCAVATION; VIEWED FROM THE NORTH-WEST (1M SCALE).



30. TRENCH #3, POST-EXCAVATION; VIEWED FROM THE SOUTH-EAST (1M SCALE).

TRENCH #4



32. TRENCH #4, MID-EXCAVATION; VIEWED FROM THE SOUTH (1M SCALE).



33. LINE OF DITCH [404]; VIEWED FROM THE EAST (1M SCALE).



35. DITCH [404]; VIEWED FROM THE EAST (1M SCALE).



34. SAMPLE SECTION ABOVE DITCH [404]; VIEWED FROM THE EAST (1M SCALE).

TRENCH #5



36. TRENCH #5, POST-EXCAVATION; VIEWED FROM THE EAST-NORTH-EAST (1M SCALE).



37. TILE DRAIN IN TRENCH #5; VIEWED FROM THE SOUTH-SOUTH-EAST (1M SCALE).



39. CUT FOR PLASTIC PIPE IN TRENCH #5; VIEWED FROM THE SOUTH-SOUTH-EAST (1M SCALE).



38. PLASTIC PIPE IN TRENCH #5; VIEWED FROM THE SOUTH-SOUTH-EAST (NO SCALE).



40. TRENCH #5 SAMPLE SECTION; VIEWED FROM THE SOUTH-SOUTH-EAST (1M SCALE).



41. TRENCH #5, POST-EXCAVATION; VIEWED FROM THE WEST-SOUTH-WEST (1M SCALE).



43. TRENCH #6, POST-EXCAVATION; VIEWED FROM THE NORTH-WEST (1M SCALE).

TRENCH #6



42. TRENCH #6, POST-EXCAVATION; VIEWED FROM THE SOUTH-WEST (1M SCALE).



44. TRENCH #6, POST-EXCAVATION; VIEWED FROM THE NORTH-EAST (1M SCALE).



45. LINE OF SOUTH EDGE OF SLAB, TRENCH #6; VIEWED FROM THE SOUTH-WEST (NO SCALE).



47. TRENCH #7, POST-EXCAVATION; VIEWED FROM THE SOUTH-EAST (1M SCALE).

TRENCH #7



46. TRENCH #7, POST-EXCAVATION; VIEWED FROM THE NORTH-WEST (1M SCALE).



48. I-SECTION RSJ POST IN TRENCH #7; VIEWED FROM THE SOUTH-EAST (1M SCALE).



49. TRENCH #7, OBLIQUE VIEW ALONG TRENCH EDGE; FROM THE EAST-SOUTH-EAST (1M SCALE).

TRENCH #8



51. TRENCH #8; VIEWED FROM THE SOUTH-WEST (1M SCALE).



50. VIEW OF TRENCHES #7 AND #8; VIEWED FROM THE NORTH-WEST (NO SCALE).



52. MIDDLE OF TRENCH #8; VIEWED FROM THE NORTH-WEST (1M SCALE).



53. EASTERN EDGE OF SLAB, TRENCH #8; VIEWED FROM THE WEST (1M SCALE).



55. TRENCH #8, NORTH-EAST END; VIEWED FROM THE SOUTH-WEST (1M SCALE).



54. LINE OF STEP IN SLAB TOWARDS GRANITE POST; VIEWED FROM THE NORTH (NO SCALE).



56. STEP AND I-SECTION RSJ SLAB, TRENCH #8; VIEWED FROM THE NORTH-EAST (1M SCALE).



57. TRENCH #8; VIEWED FROM THE NORTH-EAST (1M SCALE).

ADDITIONAL SITE SHOTS



59. SOUTHERN AREA, NORTH SIDE; VIEWED FROM THE WEST (NO SCALE).



58. EXAMPLE OF MODERN FINDS FROM MADE-GROUNDS IN TRENCH #8 (NO SCALE).



60. SOUTHERN AREA, SOUTH SIDE; VIEWED FROM THE WEST (NO SCALE).

LAND AT COURT BARTON, AVETON GIFFORD, SOUTH HAMS, DEVON



61. SOUTHERN AREA, EASTERN SIDE OF SITE; VIEWED FROM THE SOUTH (NO SCALE).



63. SOUTHERN AREA, SOUTH SIDE; VIEWED FROM THE EAST (NO SCALE).



62. SOUTHERN AREA; VIEWED FROM THE SOUTH-EAST (NO SCALE).



64. VIEW FROM THE SOUTH-EAST CORNER TOWARDS COURT BARTON/CHURCH; FROM THE SW.



65. PLASTIC PIPE IN DRAIN/STREAM IN THE SOUTH-WEST CORNER OF THE SITE, ASSOCIATED WITH ON-SITE DRAINAGE; VIEWED FROM THE NORTH-EAST (NO SCALE).



67. THE NORTHERN AREA LOOKING ACROSS TRENCH #6; FROM THE SOUTH-WEST (NO SCALE).



66. SOUTHERN AREA DURING BACK-FILLING; VIEWED FROM THE NORTH-WEST (NO SCALE).



68. NORTHERN AREA; VIEWED FROM THE SOUTH-EAST (NO SCALE).



69. NORTHERN AREA FROM THE SOUTH-EAST END OF TRENCH #7; FROM THE SOUTH (NO SCALE).



70. ST ANDREWS CHURCH, NORTH-EAST OF THE SITE; FROM THE SOUTH-WEST (NO SCALE).



THE OLD DAIRY
HACCHE LANE BUSINESS PARK
PATHFIELDS BUSINESS PARK
SOUTH MOLTON
DEVON
EX36 3LH

01769 573555
01872 223164
MAIL@SWARCH.NET