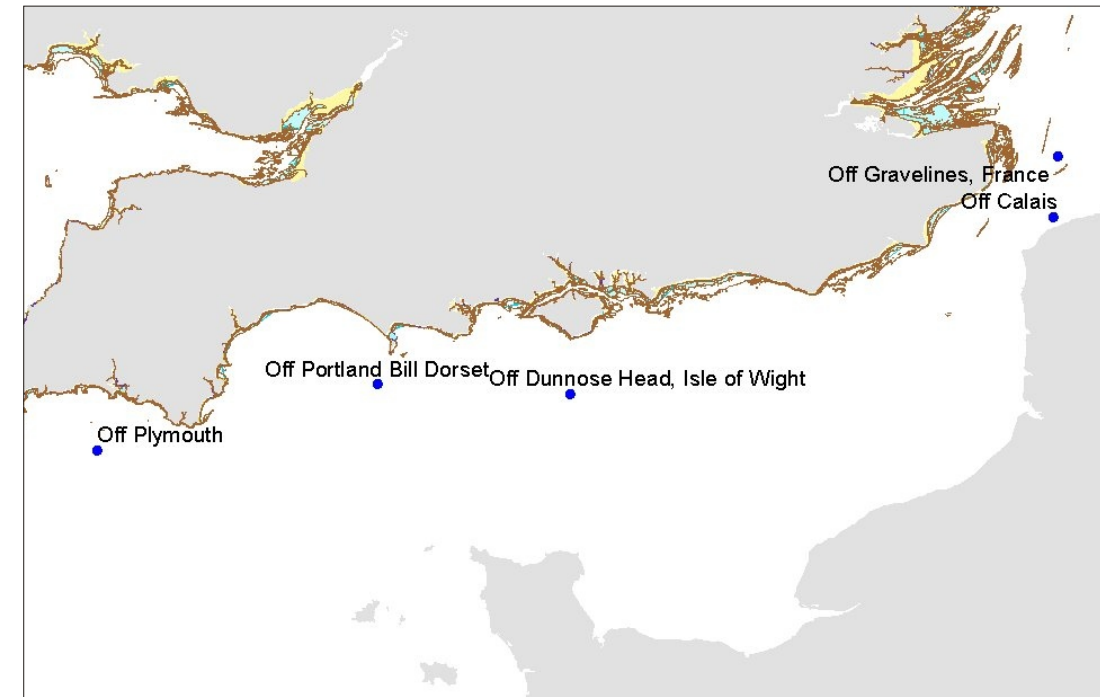
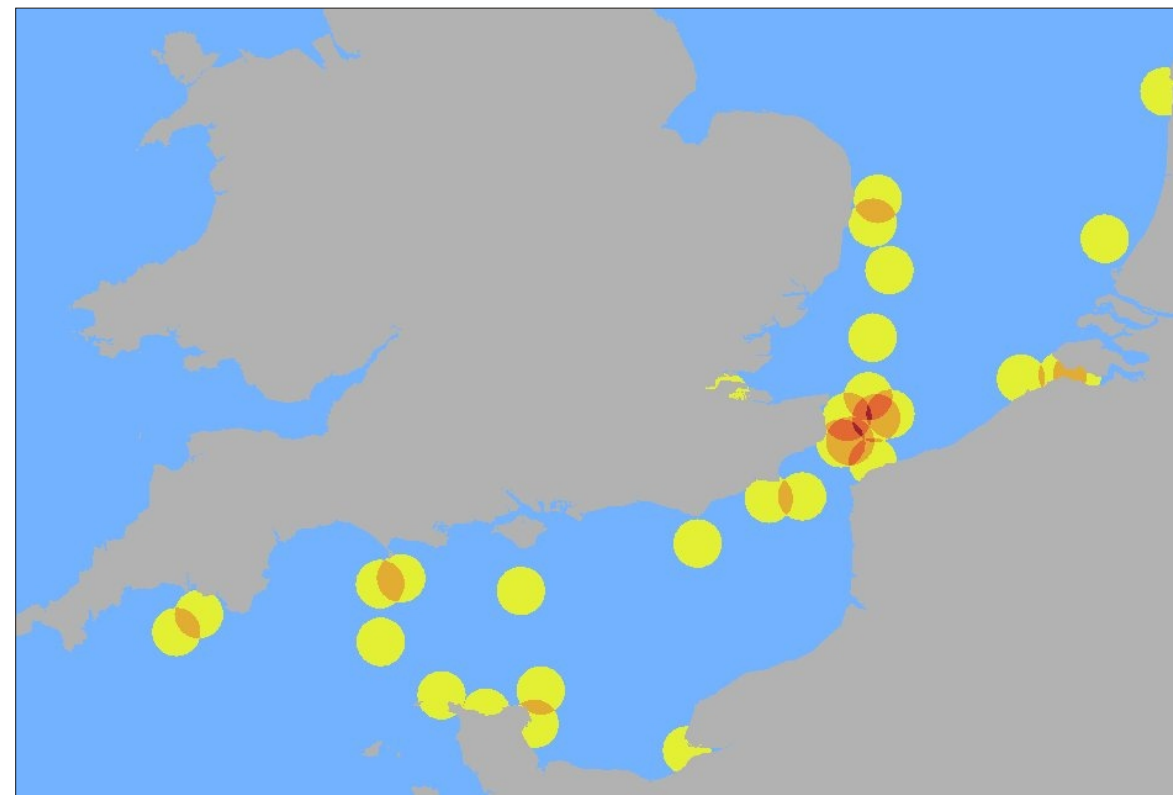


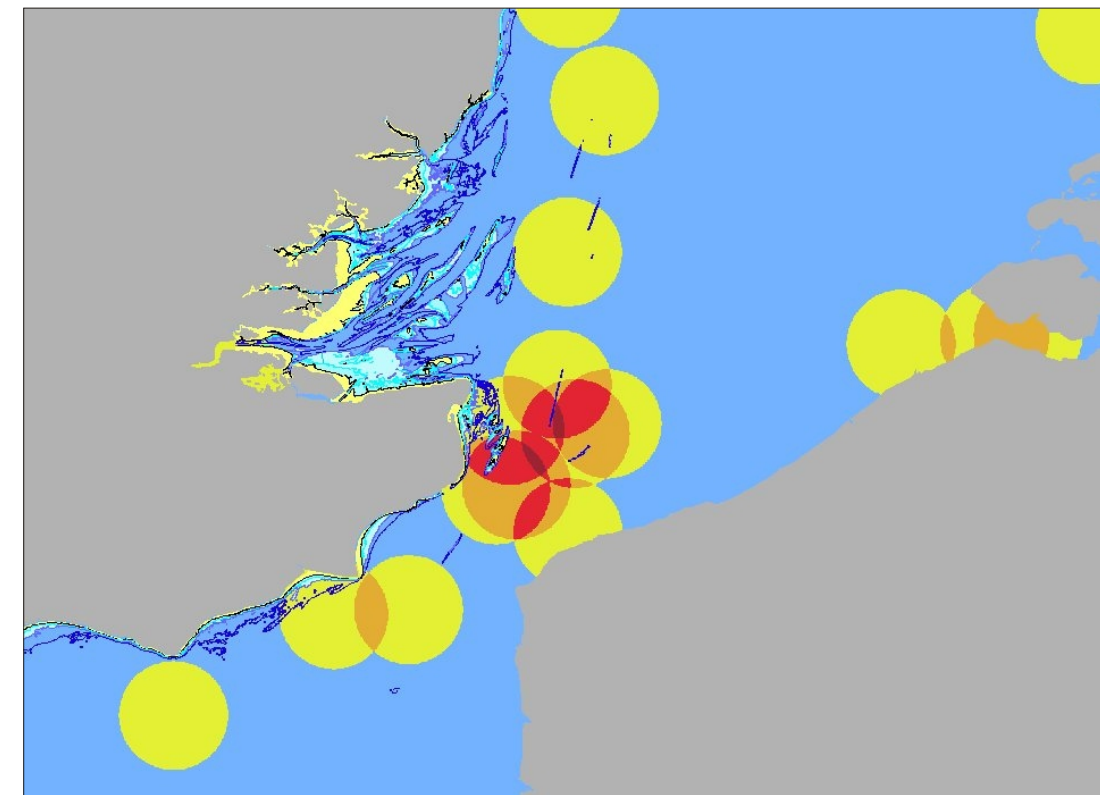
A: A battle location plot from a secondary source depicting the journey of the Spanish Armada and the locations of the battles that ensued with the English fleet.



B: Plot of the Spanish Armada battle locations produced by Wessex Archaeology based on descriptions and charts from predominantly secondary and some primary resources.



C: Plots of the battle locations around England up to 1730. The battle points were buffered to 15-kilometres to indicate the likely area the battle occurred. The buffers were then intersected to show the areas of the sea that is likely to have had the highest frequency of battle activity.



D: A close up view of the battle buffers and the intersections showing the highest frequency of battle activity on the East coast of England around the Downs.