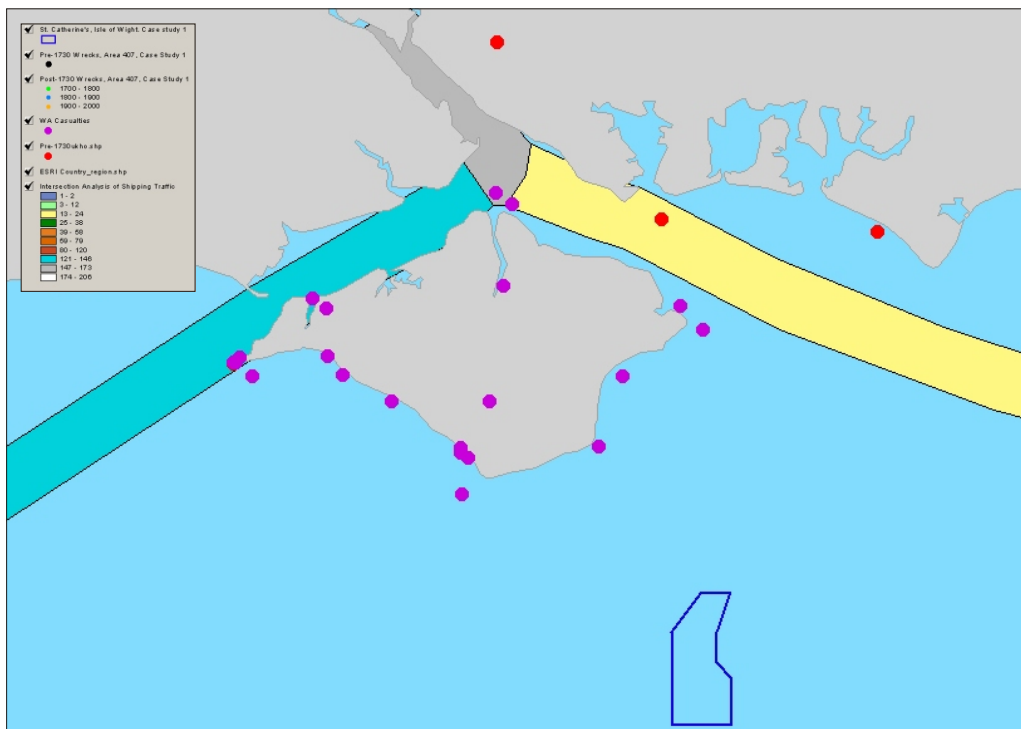



A: A representation of the wreck and casualty information that was collected as part of the environmental assessment for the aggregate extraction zone, Area 407, St. Catherine's, Isle of Wight.



B: Additional pre-1730 wreck and casualty data and post-1730 wreck positions, that had been obtained due to the assessment of the case study area with English Shipping data for Area 407, St. Catherine's, Isle of Wight.

	Date:	11/02/04	Revision Number:	0
	Scale:	N/A	Illustrator:	KMN
	Path:	W:\51552\Drawing Office\Report Figures\EHreports\04_01\cdr		