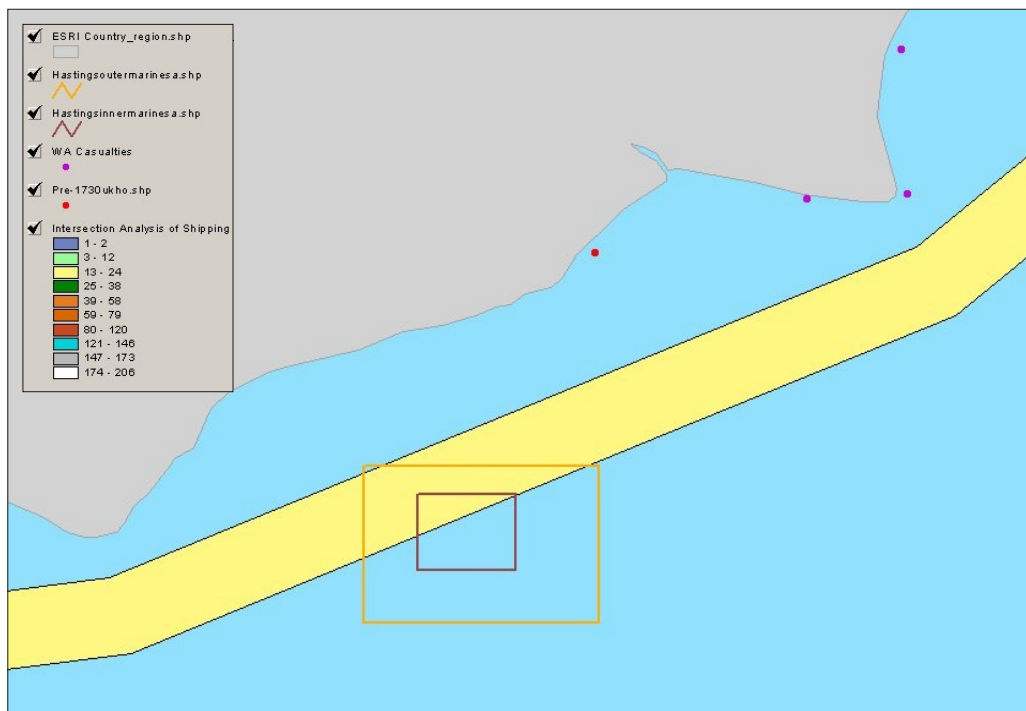



A: A representation of the wreck and casualty information that was collected for the land and marine study areas as part of the environmental assessment for the aggregate extraction zone around Hastings Shingle Bank and South Hastings.



B: Additional pre-1730 wreck and casualty data and post-1730 wreck positions, that had been obtained due to the assessment of the case study area with English Shipping data for Hastings Shingle Bank and South Hastings.

	Date:	11/02/04	Revision Number:	0
	Scale:	N/A	Illustrator:	KMN
	Path:	W:\51552\Drawing Office\Report Figures\EHreports\04_01\cdr		