



Figure 55: (Above) slope model of Sawley earthworks; (Below) vertical colour air photograph enhanced using LiDAR to create an oblique effect

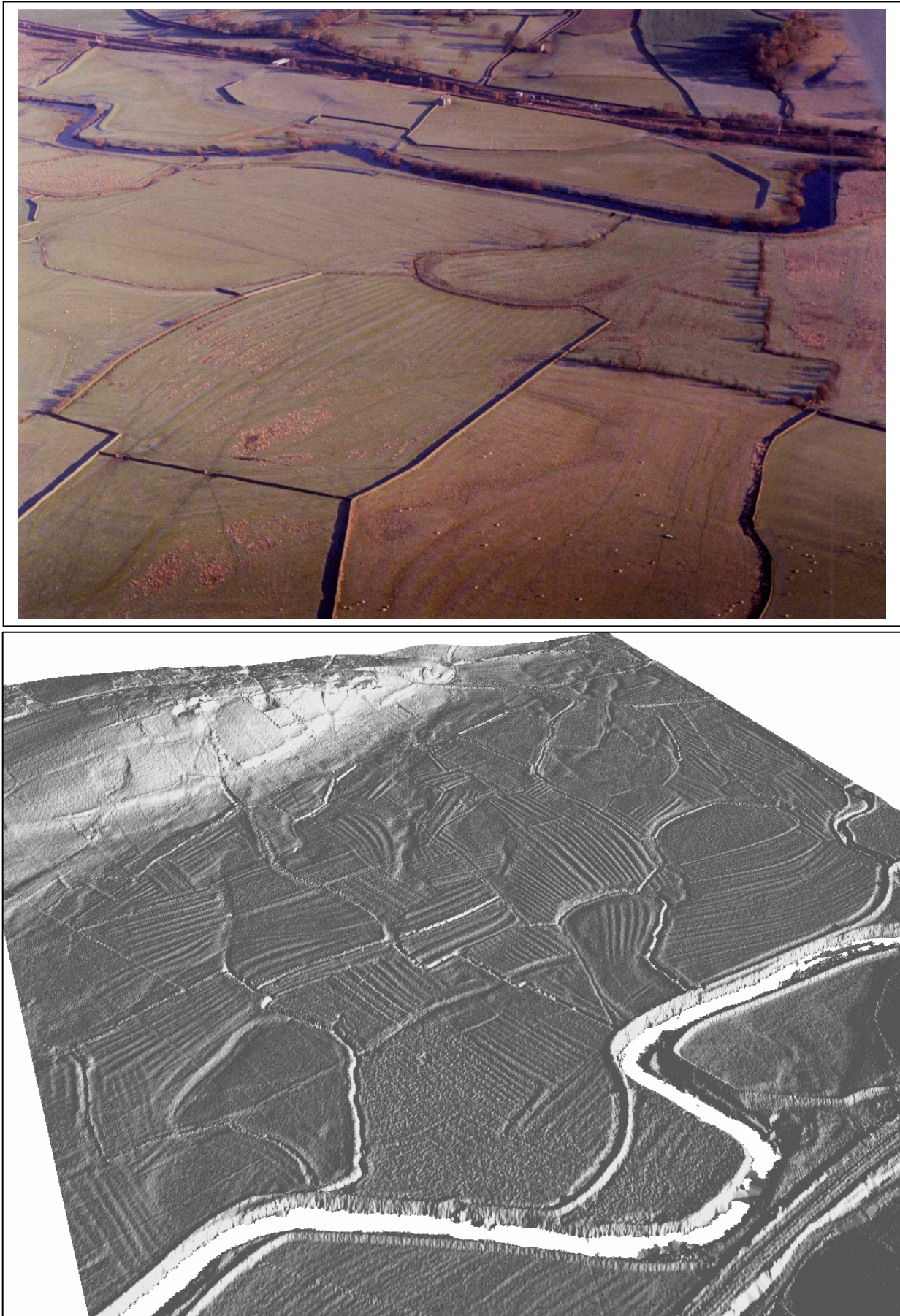


Figure 56: (Above) aerial photograph of ridge and furrow at Rathmel, North Yorkshire;
(Below) LiDAR slope model displayed in ArcScene used to bring out additional detail

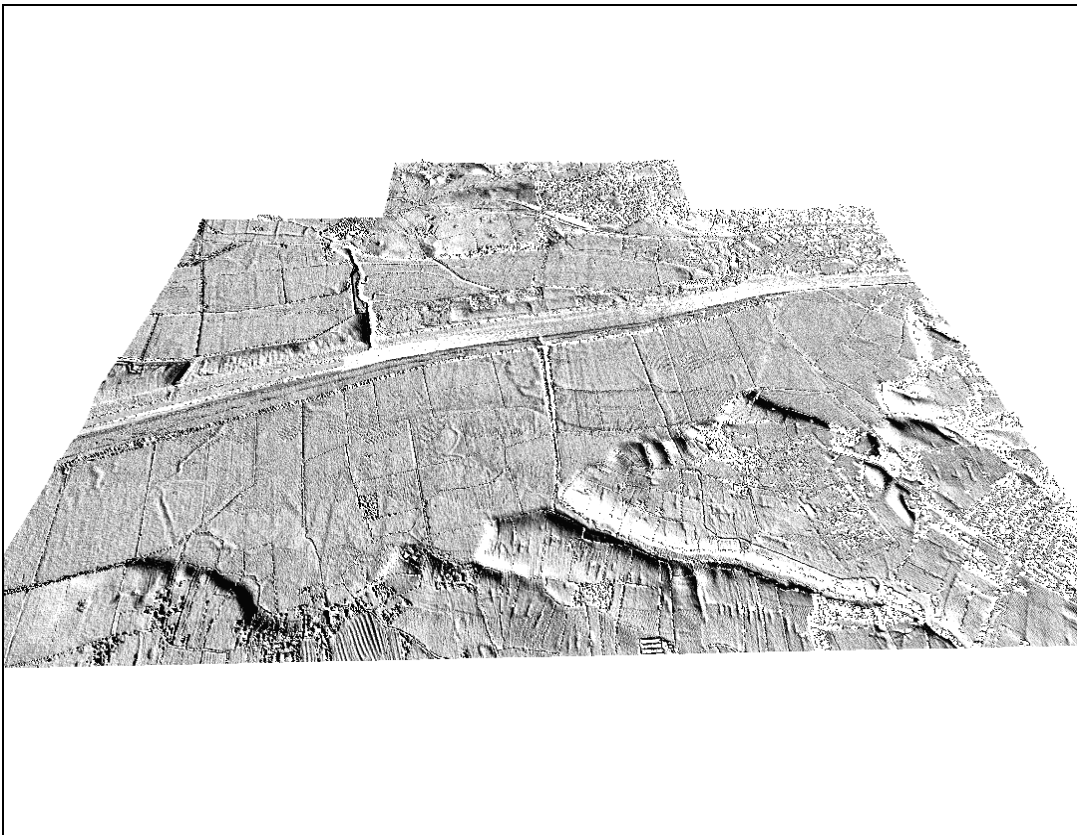
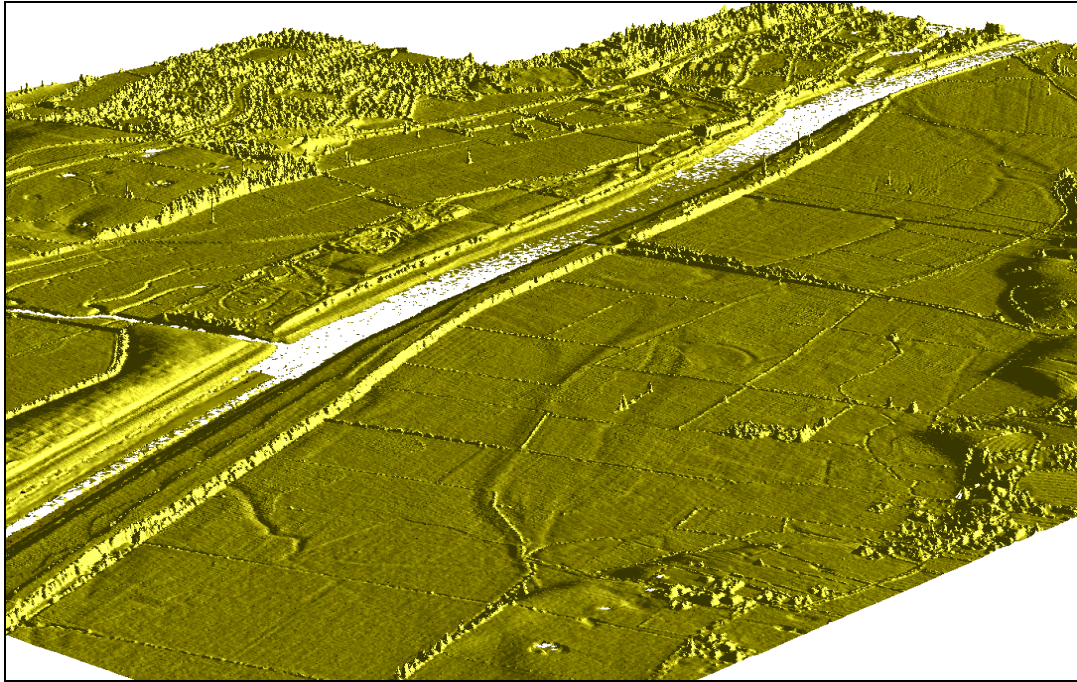


Figure 57: Variations of slope models showing reclaimed land and palaeochannels west of Preston docks

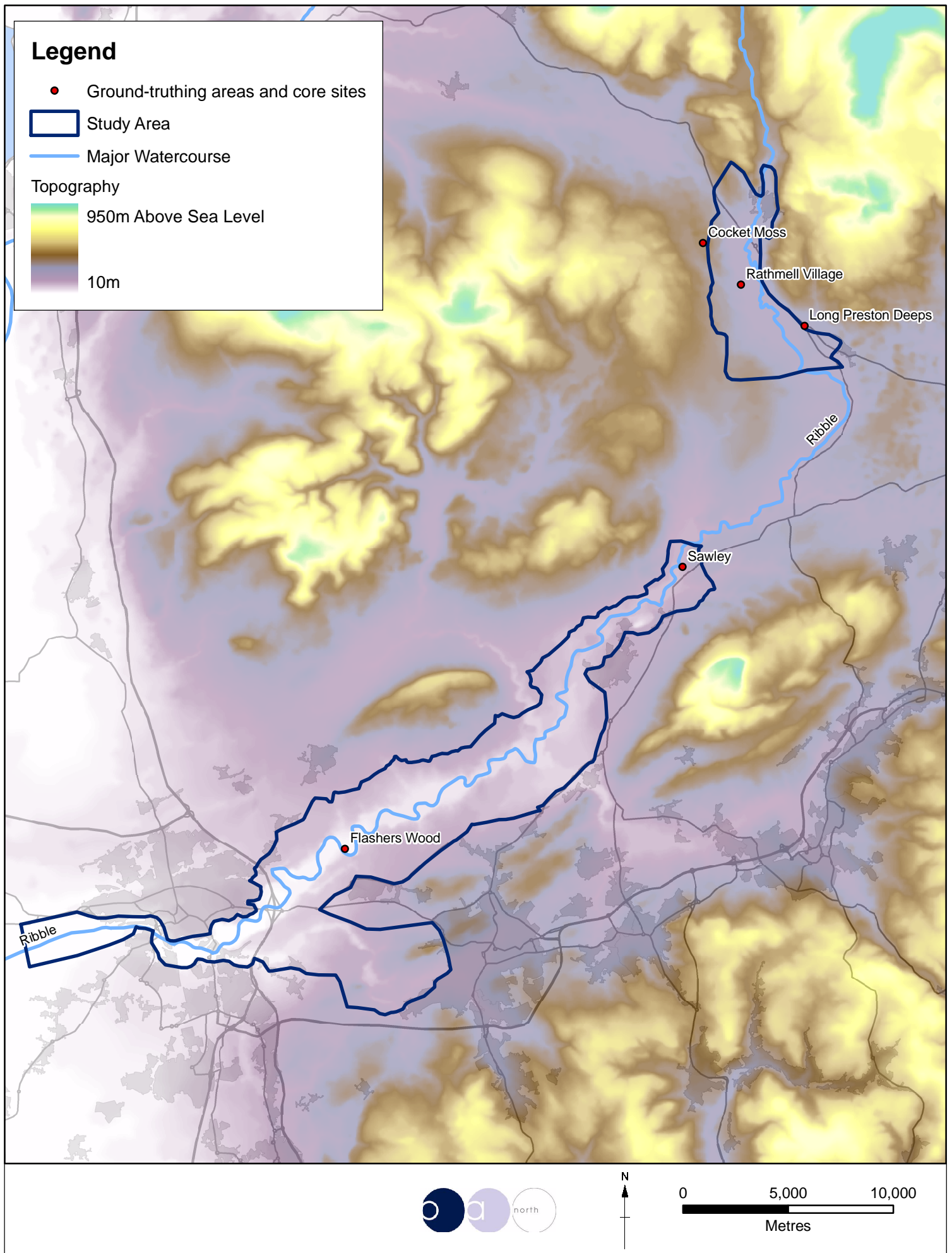
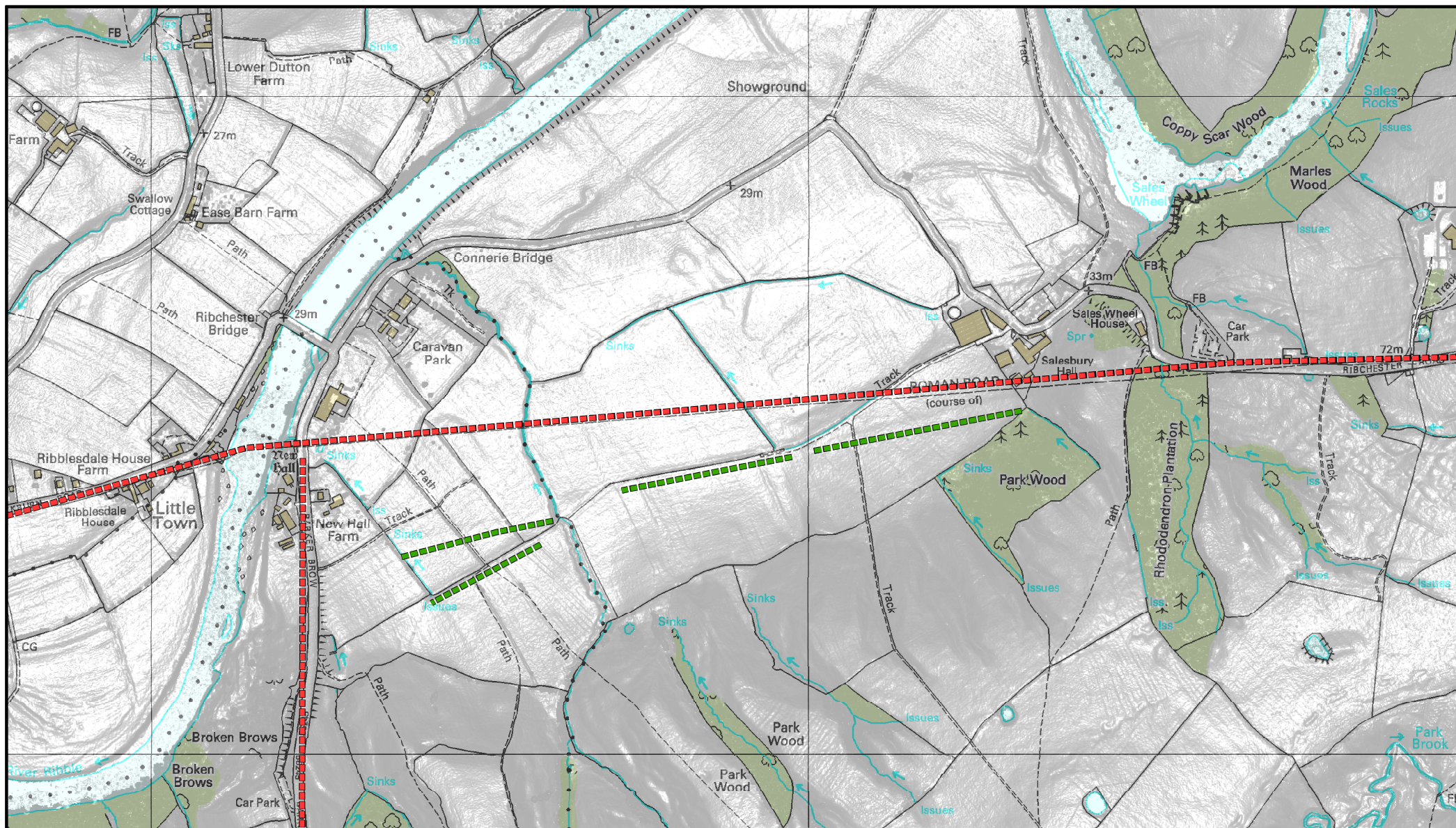


Figure 58: Ground-truthing areas



Based on the Ordnance Survey 1:10000
with the permission of the controller of HMSO
© Crown Copyright

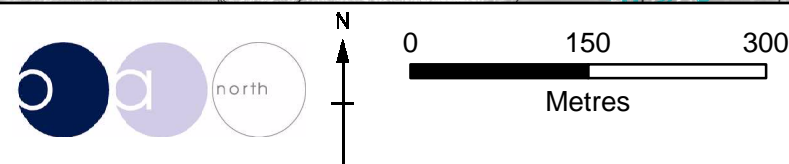


Figure 54: Roman road at the eastern approach to Ribchester shown on current Ordnance Survey map (red)
compared to linear features shown on LiDAR slope model (green)

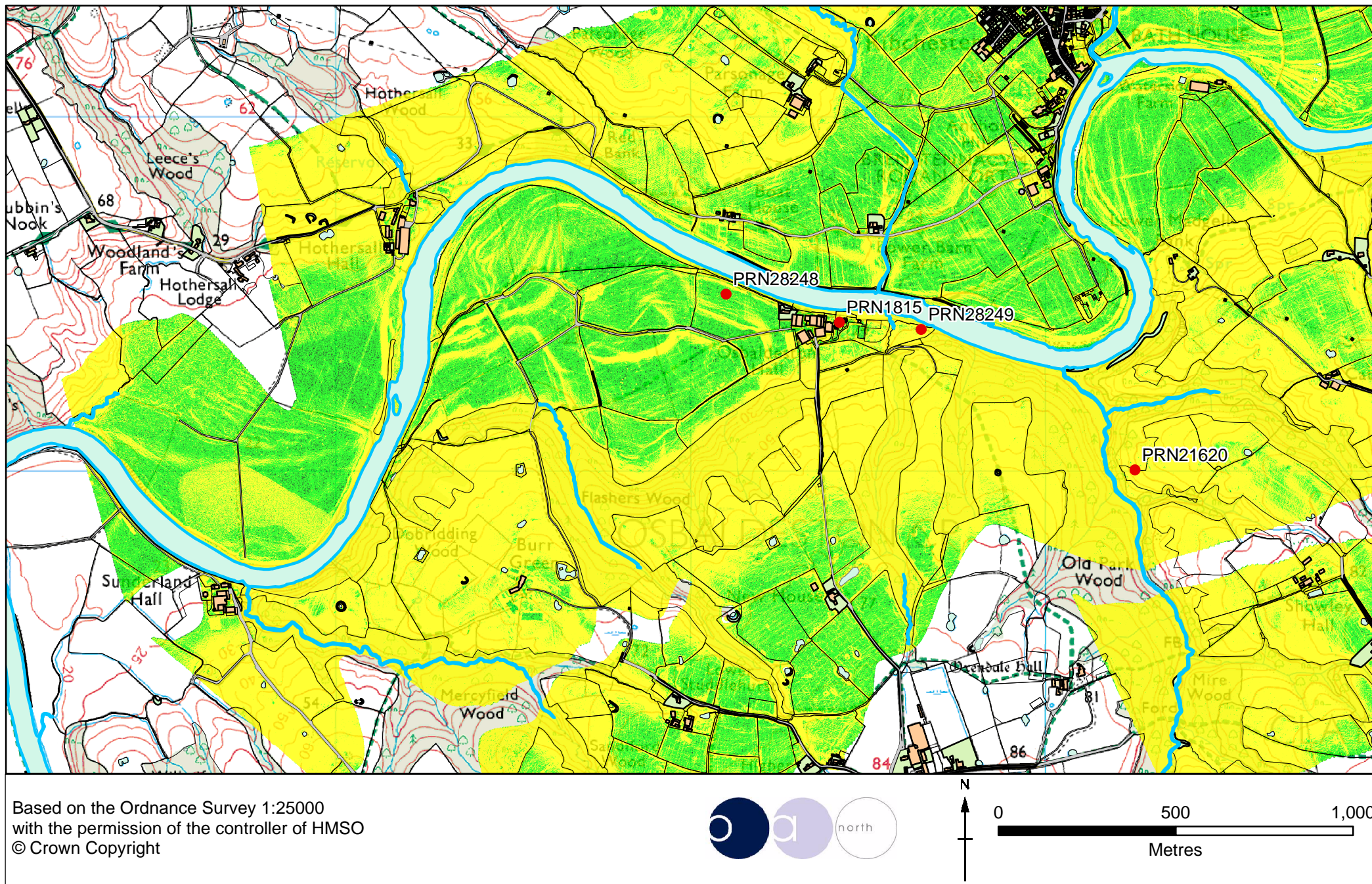


Figure 59: Previously recorded monuments around Osbaldeston Hall Farm, superimposed over LiDAR slope model of river terraces