

Figure 156: CAESAR-modelled geomorphological change in the Upper Ribble catchment: a) present day and b) future hydrological regime

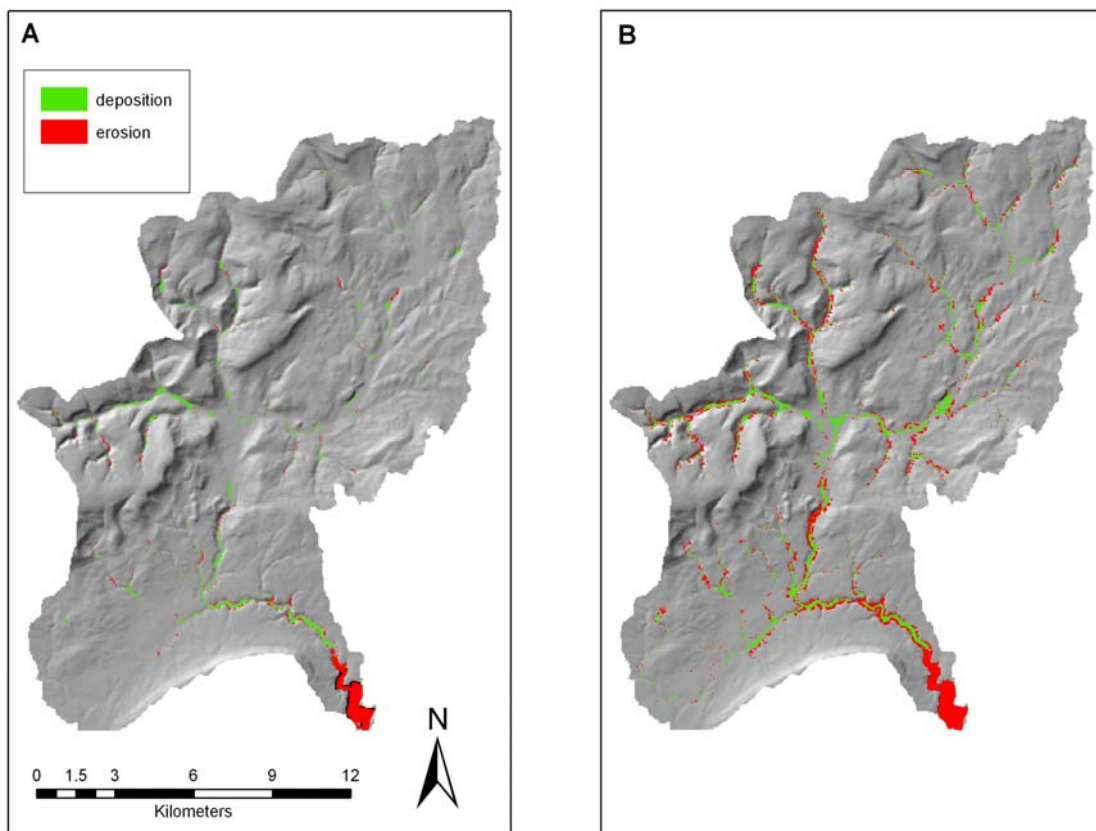


Figure 157: CAESAR-modelled geomorphological change in the Hodder catchment: a) present day and b) future hydrological regime

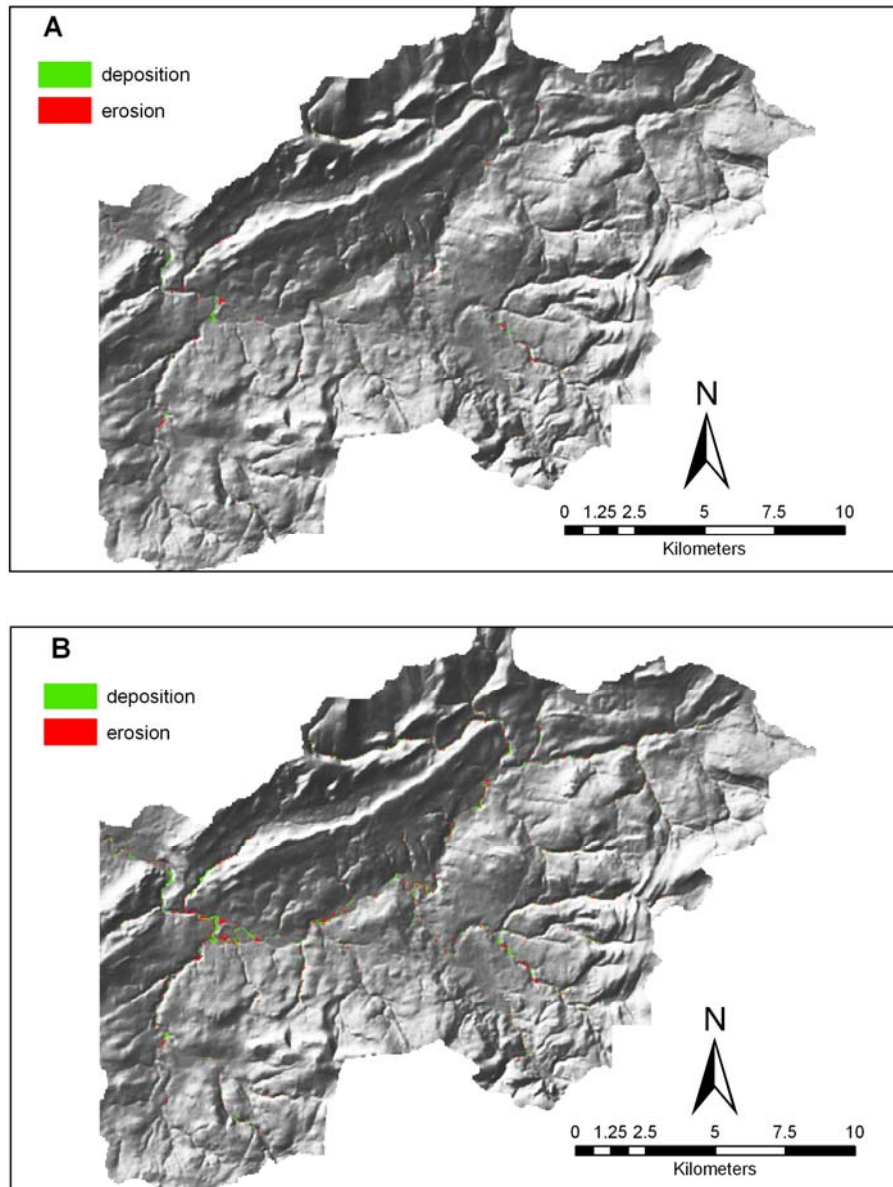


Figure 158: CAESAR-modelled geomorphological change in the Calder catchment: a) present day and b) future hydrological regime

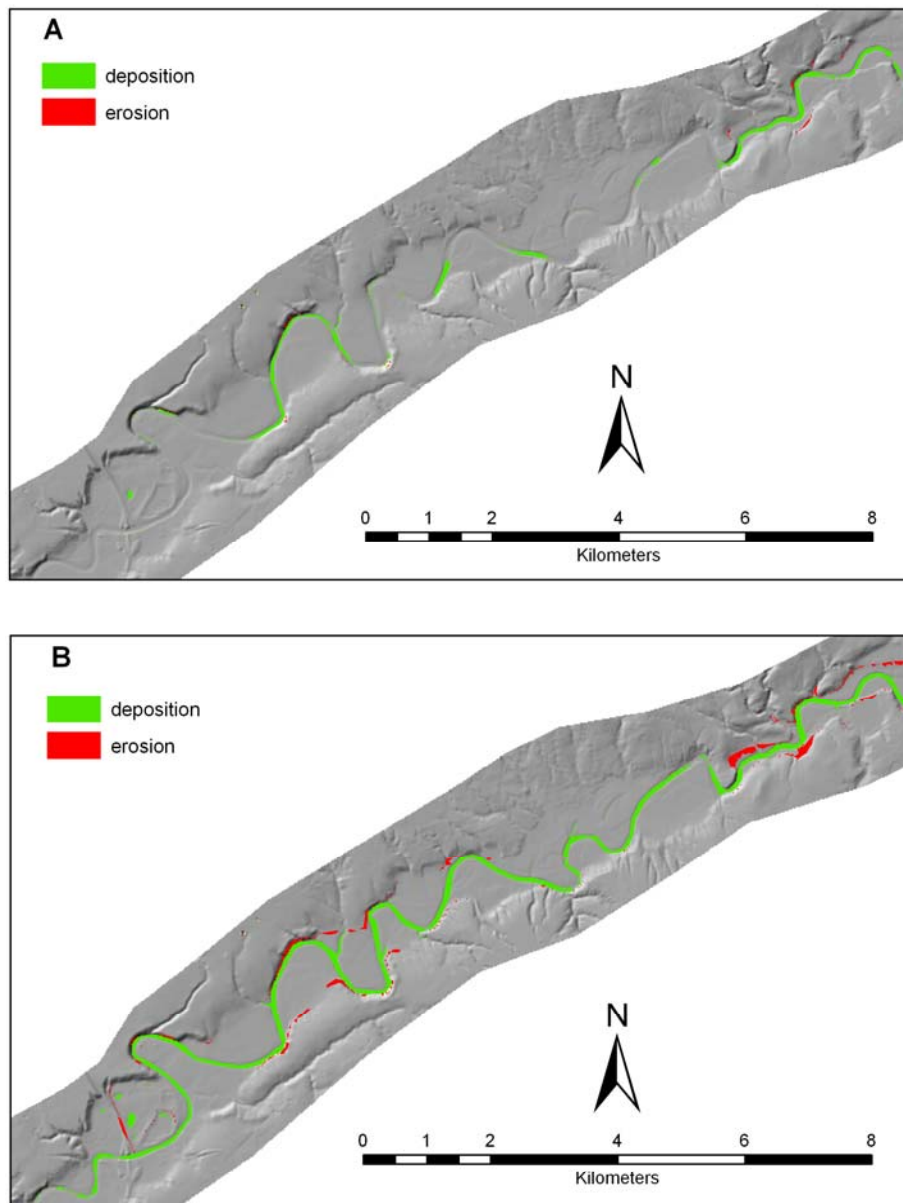


Figure 159:CAESAR-modelled geomorphological change in the Lower Ribble Valley reach: a) present day and b) future hydrological regime



**present day scenario**

**future scenario**

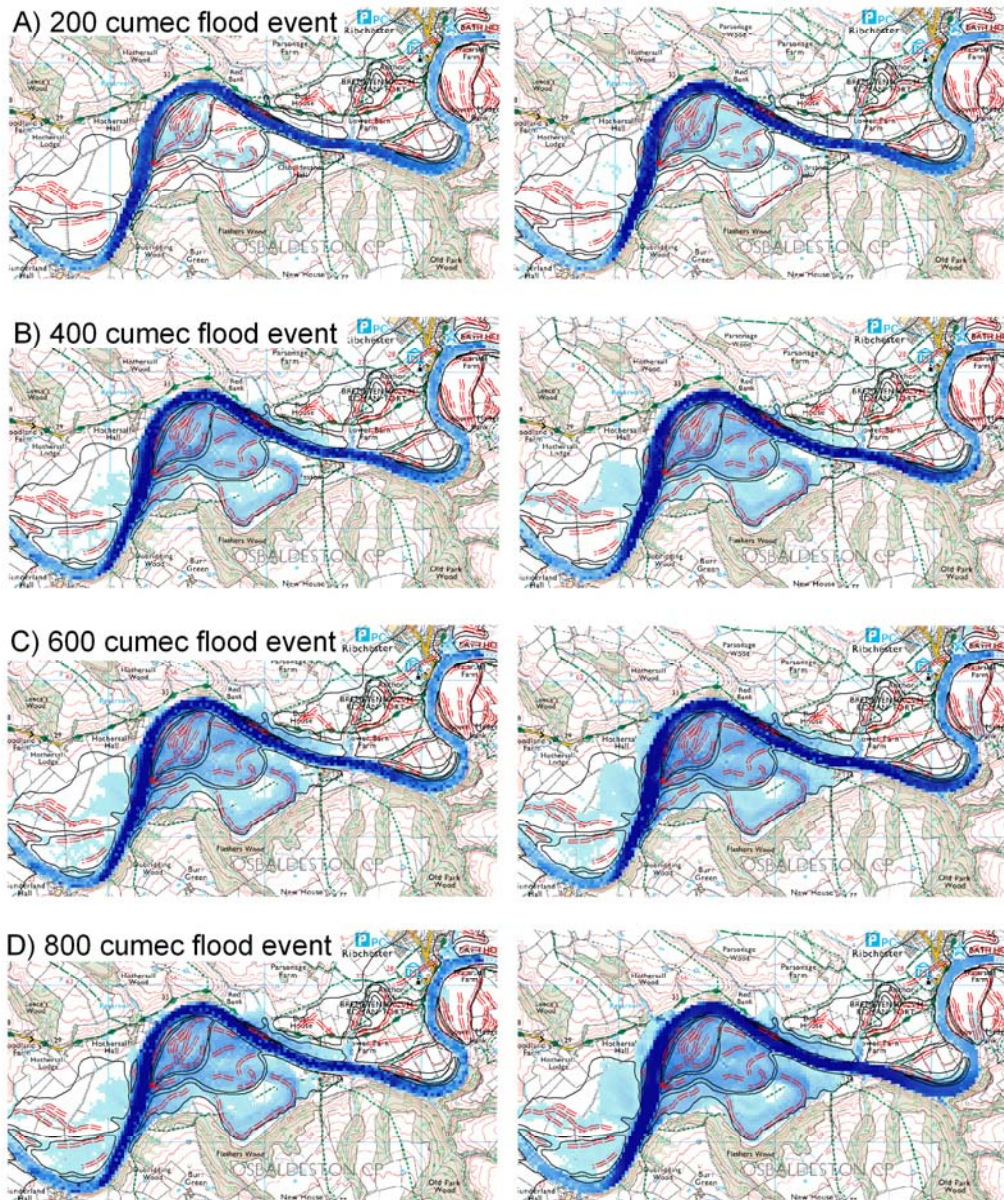


Figure 160: CAESAR-modelled flood inundation extent along the Lower Ribble (present day and future climate modified landscape) between Ribchester and Hothershall Hall