

Figure 33. Geoarchaeological zones within the West Sussex Coastal Plain region (Areas 1 and 2).

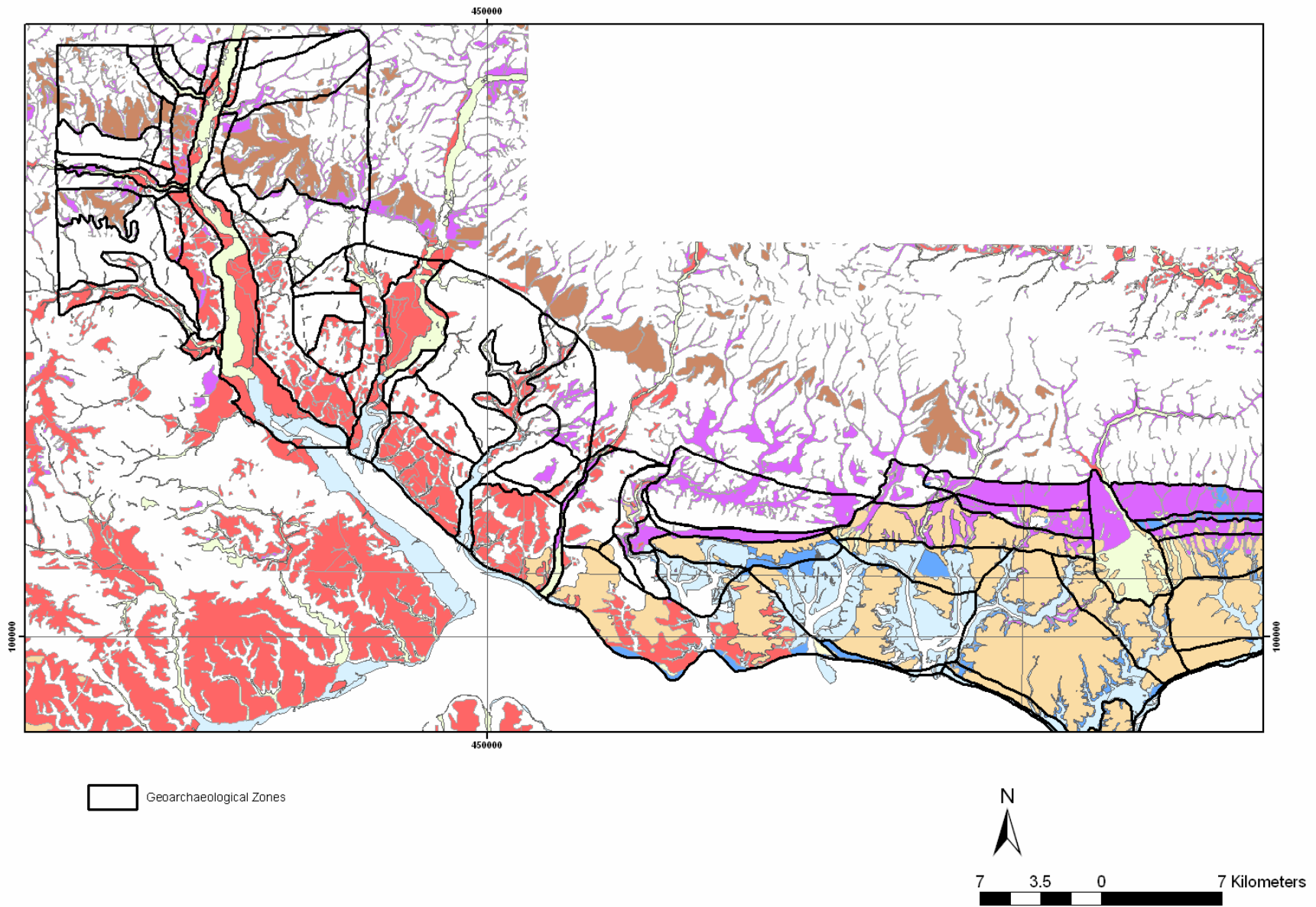


Figure 34. Georchaological zones within the Solent region (Areas 3-5).

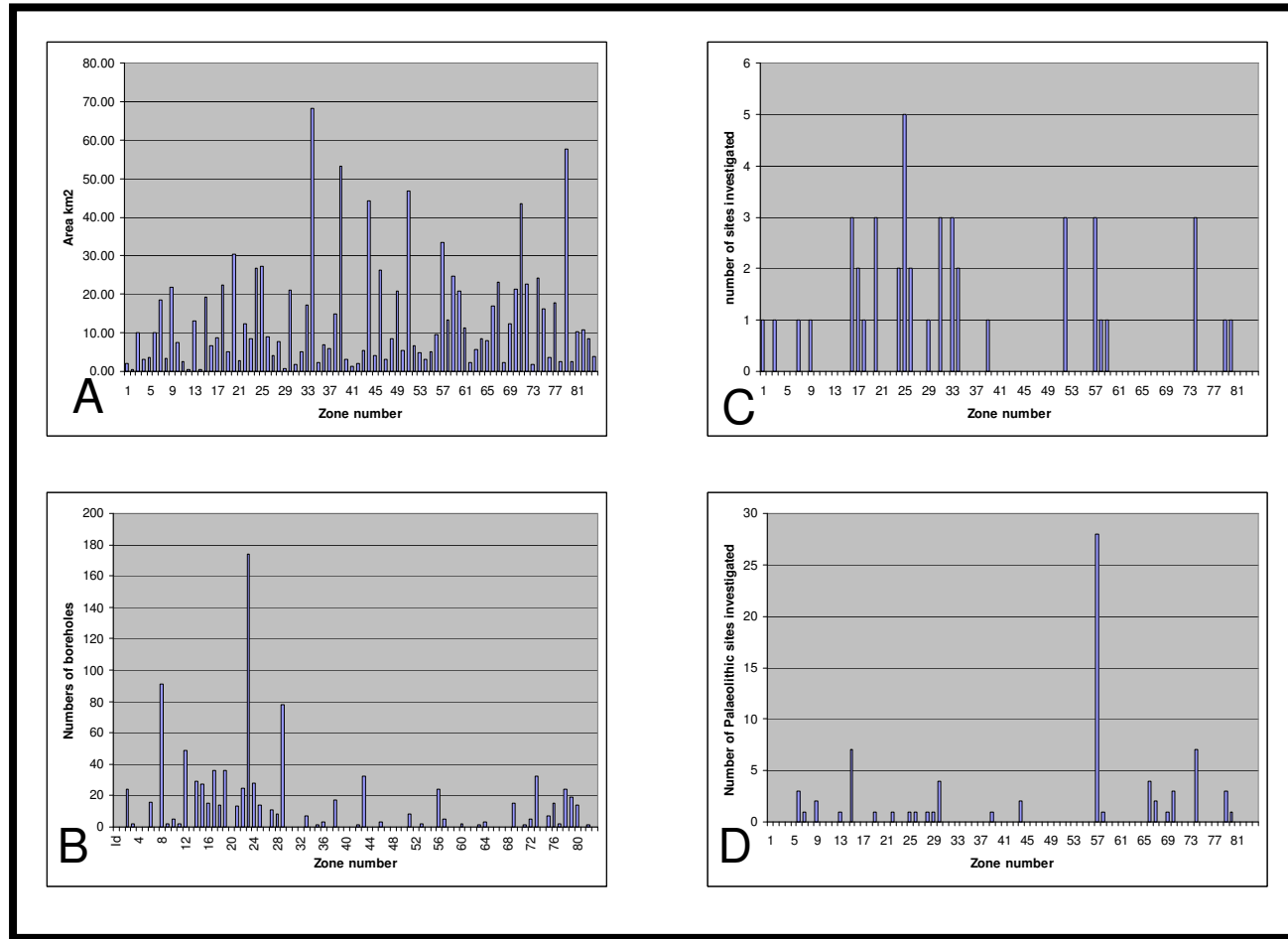


Figure 35. A: Total area of ge archaeological zones. **B:** Numbers of boreholes per zone. **C:** Numbers of sites investigated in the PASHCC project per zone. **D:** numbers of Palaeolithic archive sites per zone.

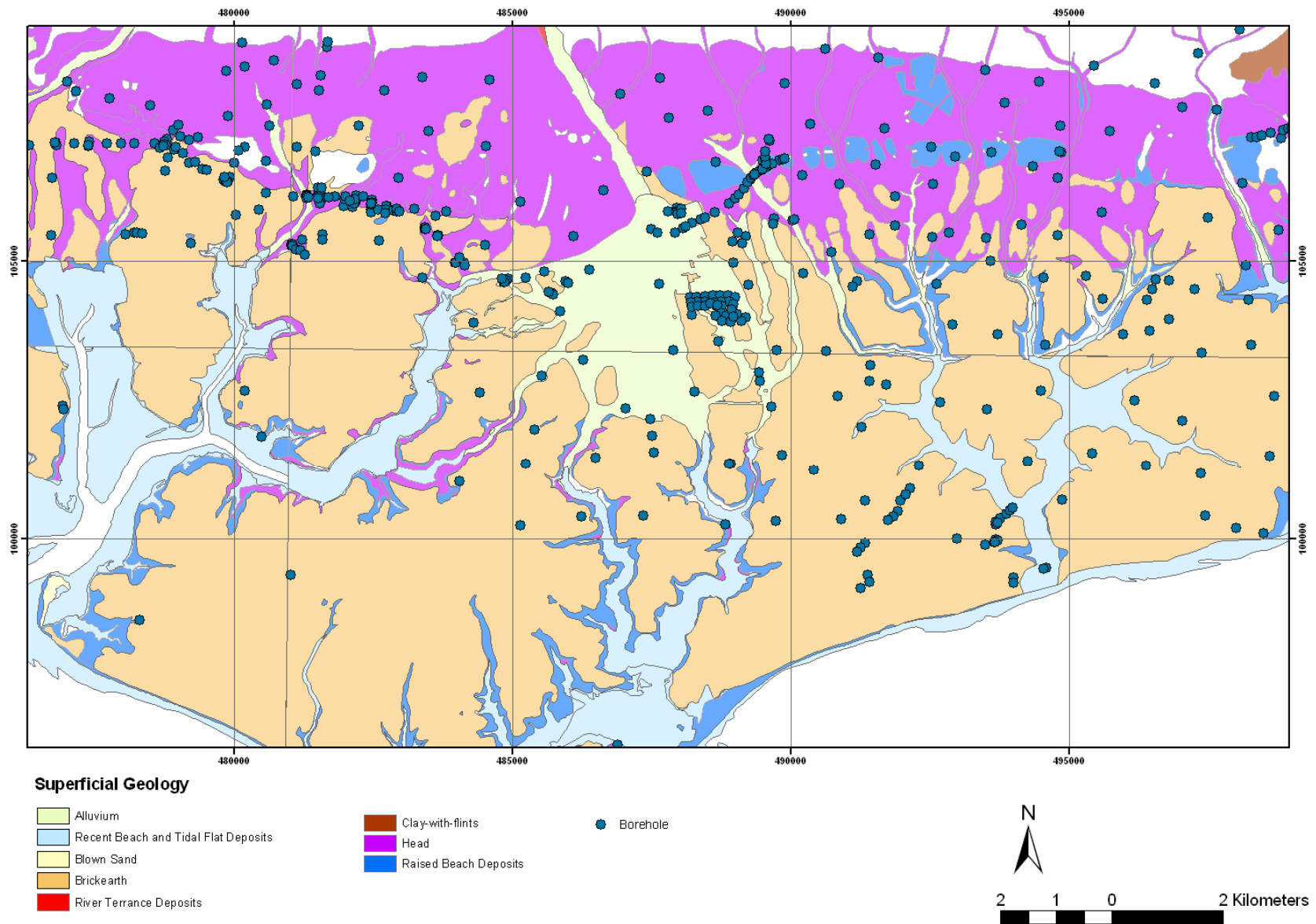


Figure 36 Distribution of borehole data across the Chichester region.

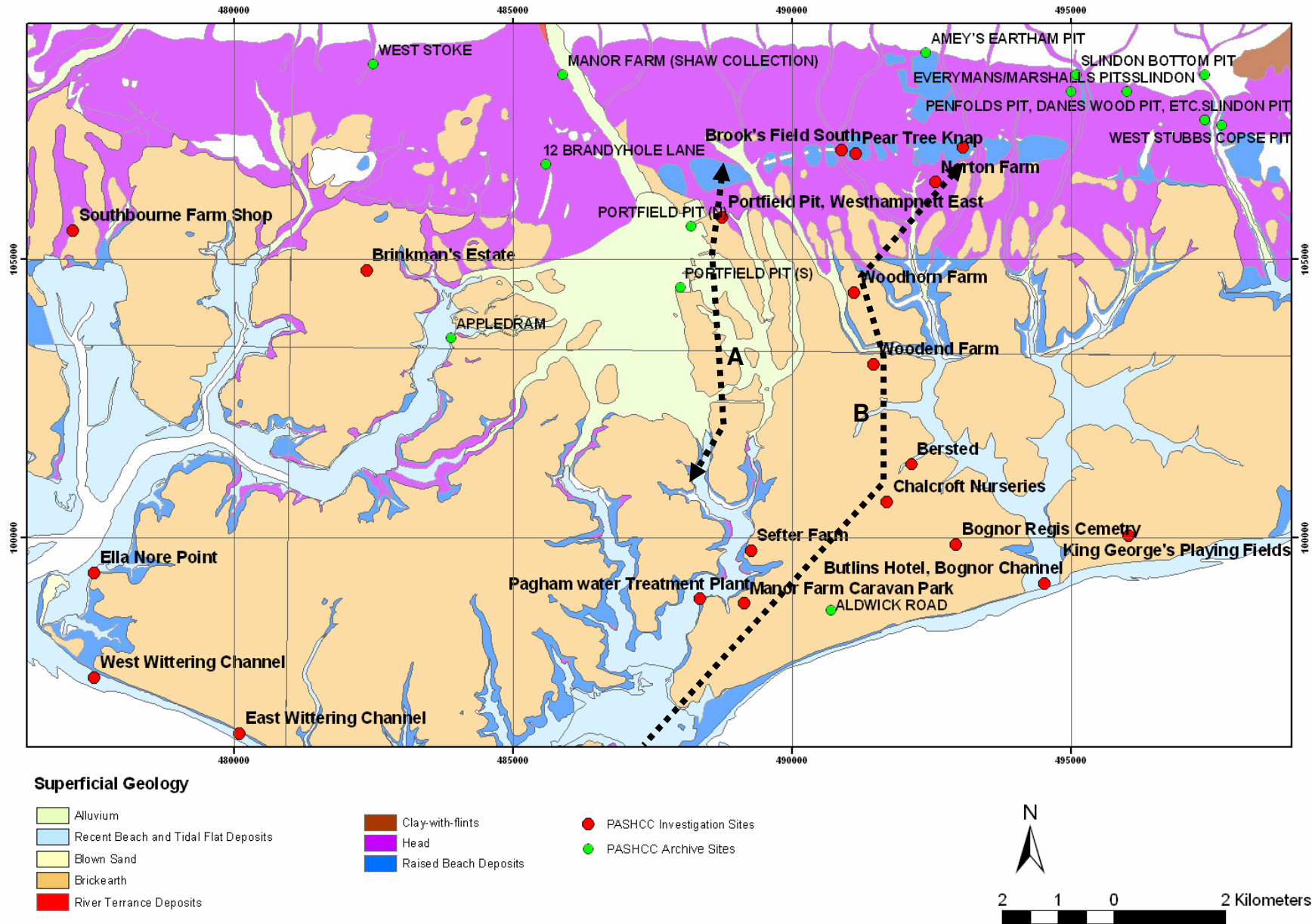


Figure 37. PASHCC investigation and archaeological archive sites for the Chichester region. Position of transect lines A (Figure 16) and B (Figure 10) shown dashed.

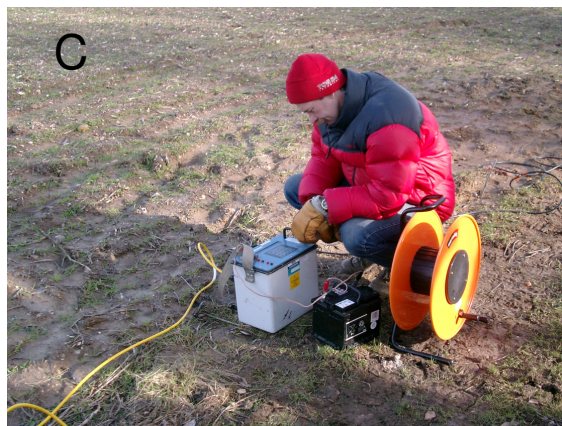
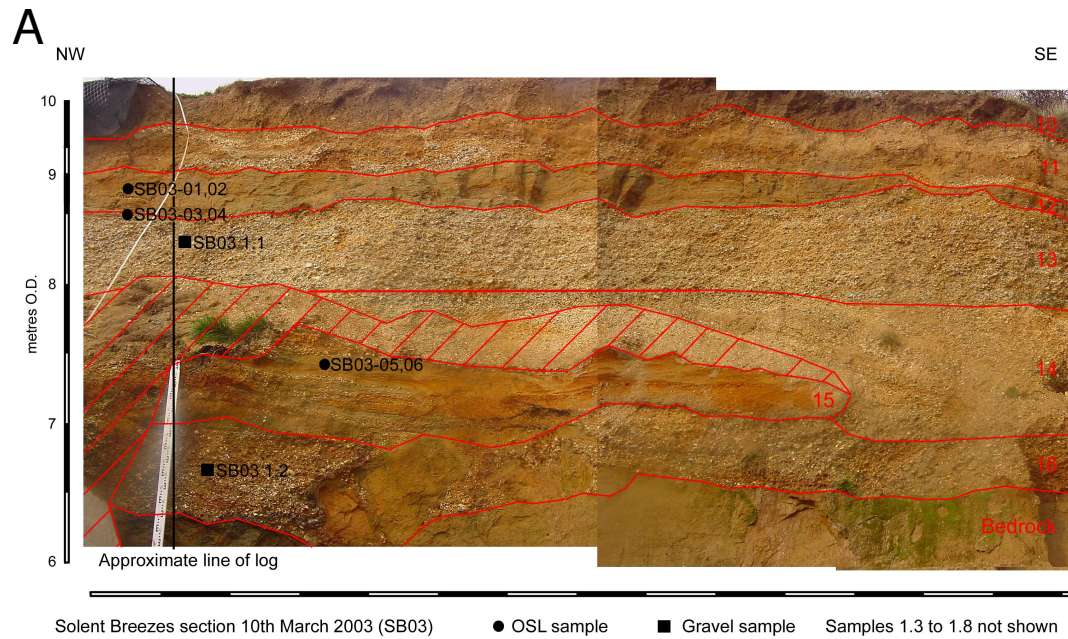


Figure 38. Survey methodology used in PASHCC project. **A:** Open section recording. **B:** Terrier drilling. **C:** Electrical geophysical surveying. **D:** Test pitting.

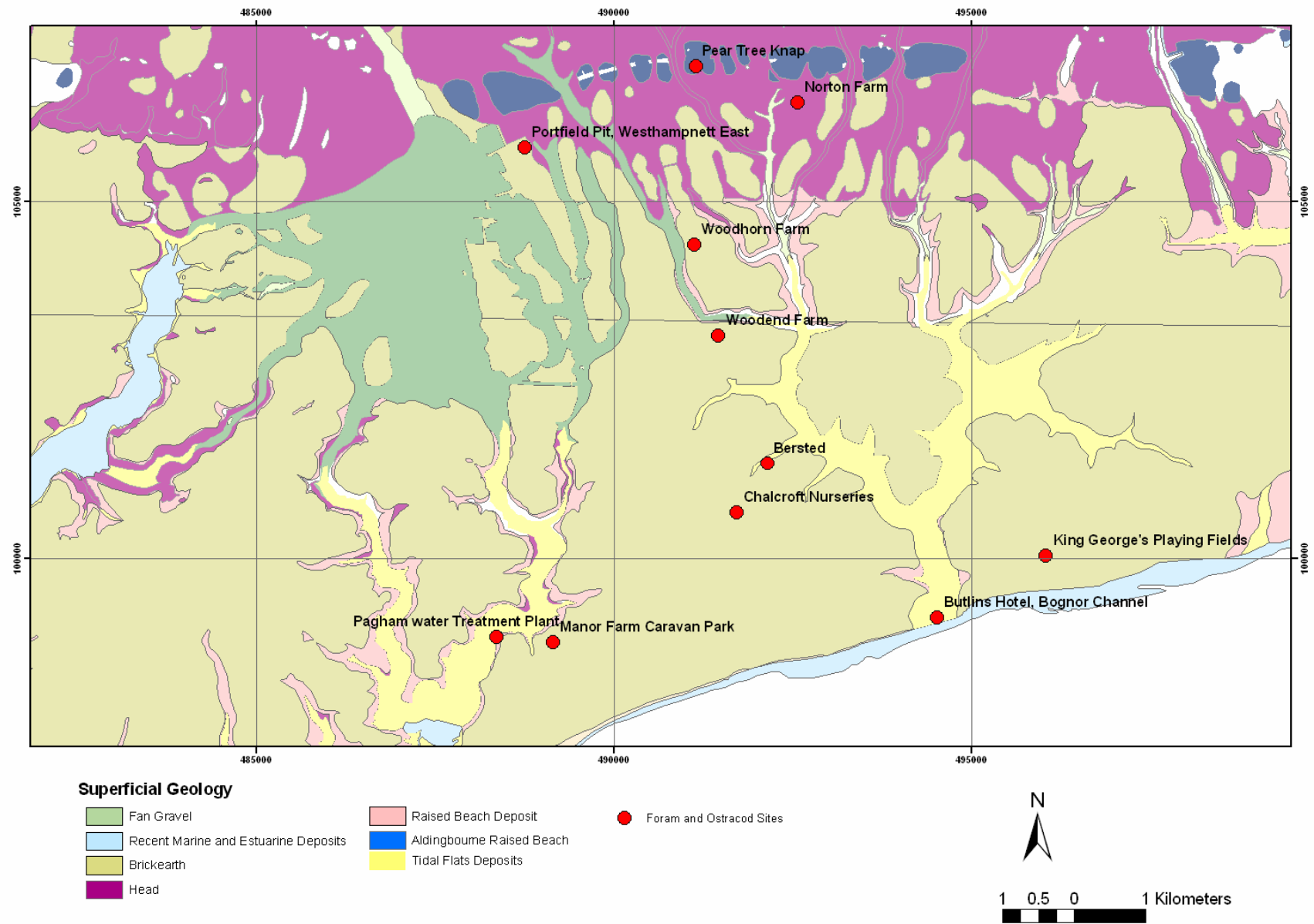


Figure 39. PASHCC sites with microfossil records.

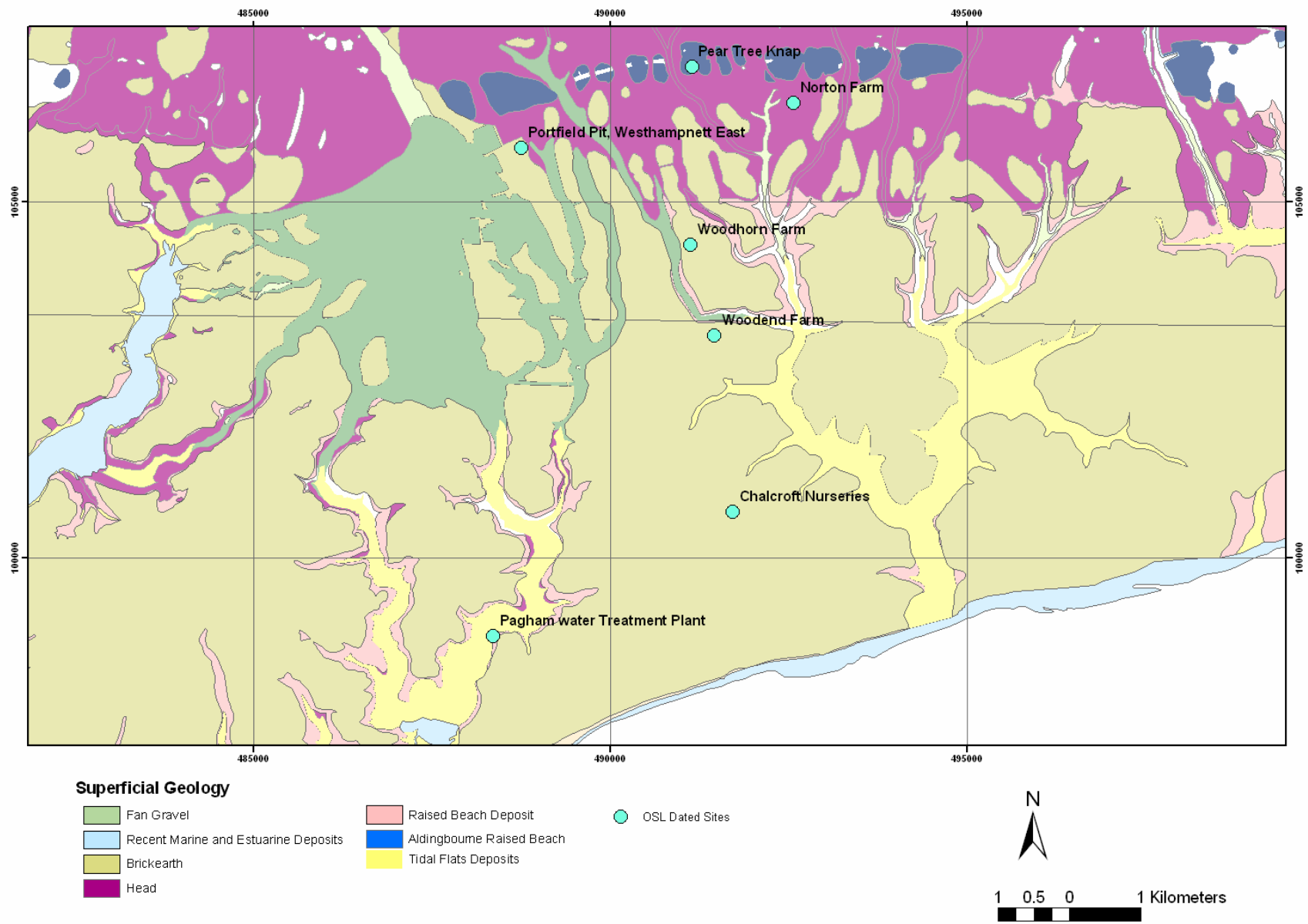


Figure 40. PASHCC sites with OSL dates.

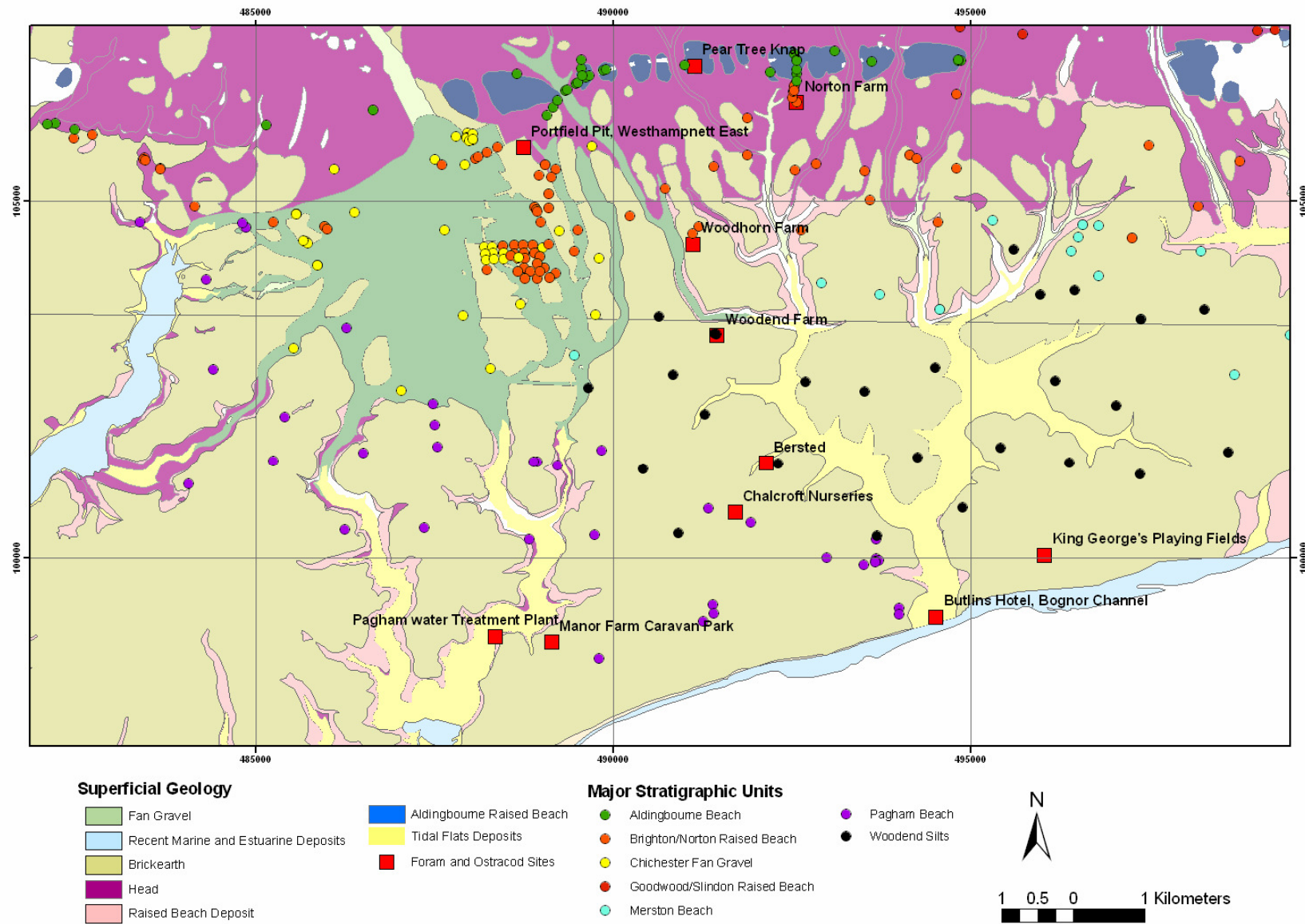


Figure 41. Archive boreholes and PASHCC sites coded to key stratigraphic units for the Chichester area.

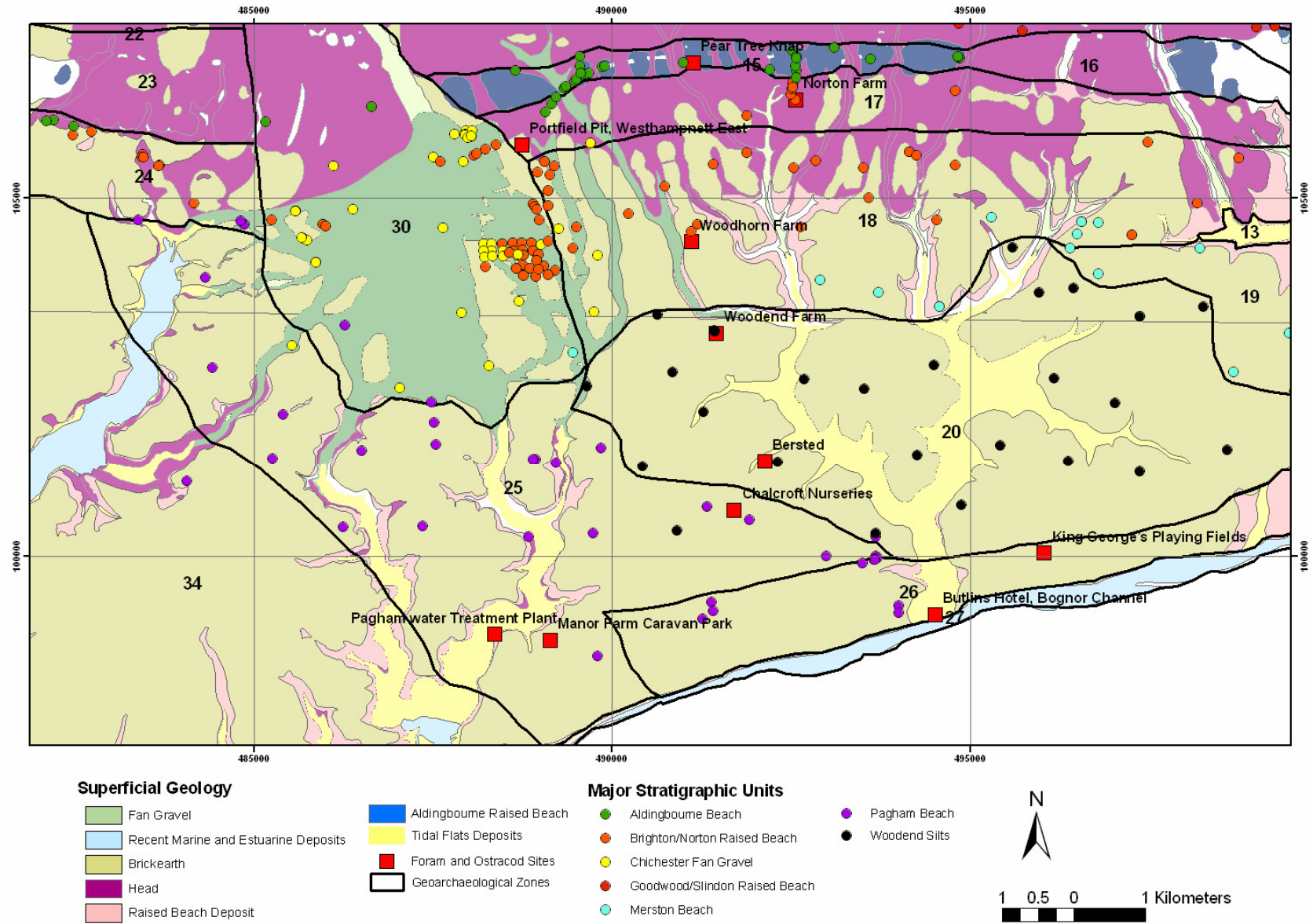


Figure 42. Geoarchaeological zones in the Chichester area.

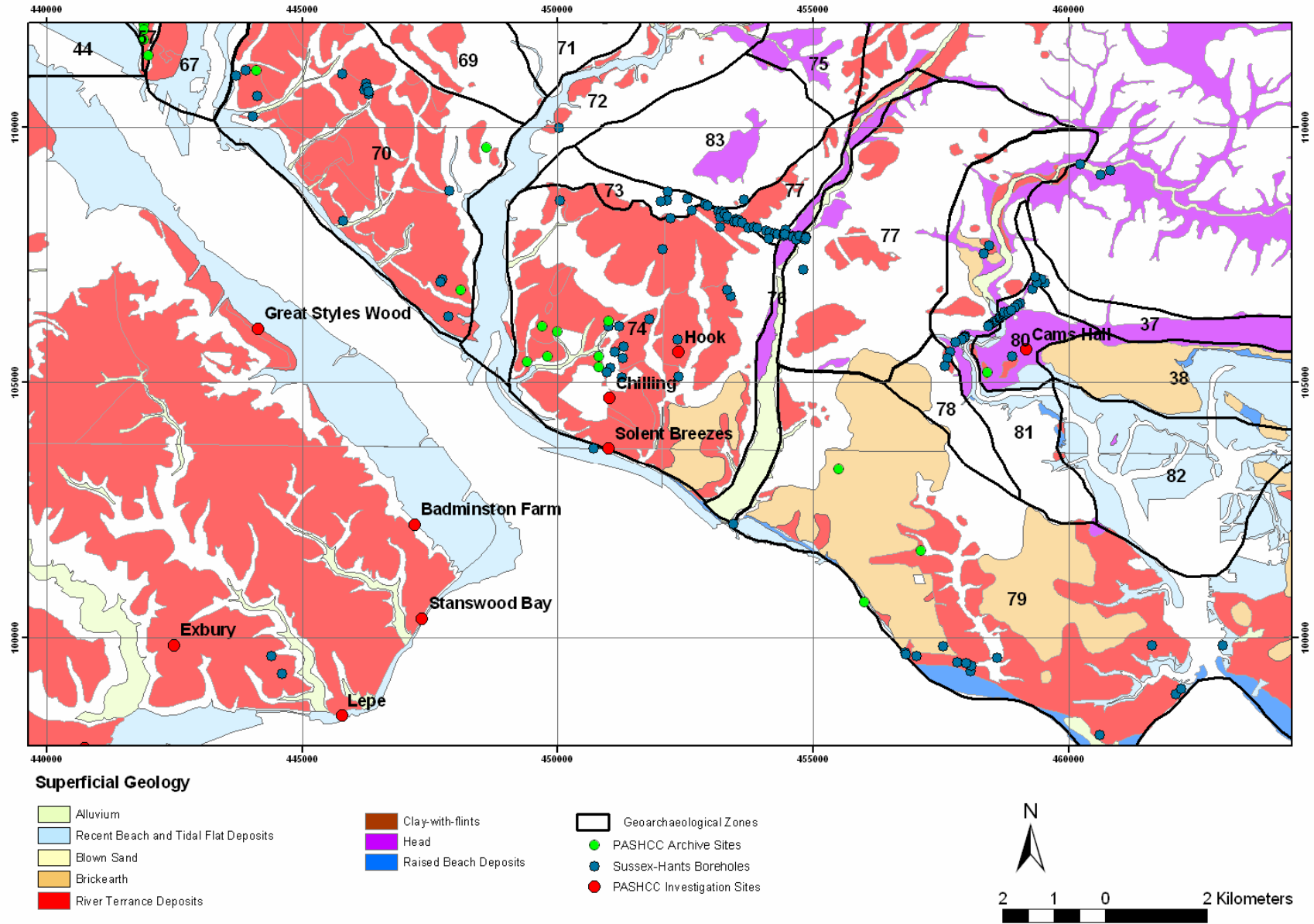


Figure 43. PASHCC zones for the Eastern Solent area.