

## Archaeological Services & Consultancy Ltd

**WATCHING BRIEF:  
LONGLANDS PRIMARY SCHOOL  
WOODSIDE ROAD  
SIDCUP  
LONDON BOROUGH OF BEXLEY**

NGR: TQ 4542 7232

*on behalf of Playle & Partners LLP*



Gareth Shane BSc (Hons)

February 2012

ASC: 1434/SLS/3



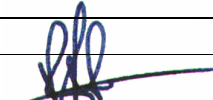
Letchworth House  
Chesney Wold, Bleak Hall  
Milton Keynes MK6 1NE  
Tel: 01908 608989 Fax: 01908 605700  
Email: [office@archaeological-services.co.uk](mailto:office@archaeological-services.co.uk)  
Website: [www.archaeological-services.co.uk](http://www.archaeological-services.co.uk)



## Site Data

<i>ASC project code:</i>	SLS	<i>ASC Project No:</i>	1434
<i>OASIS ref:</i>	archaeol-2 104602	<i>Event/Accession no:</i>	tbc
<i>County:</i>	Greater London		
<i>Village/Town:</i>	Sidcup		
<i>Civil Parish:</i>	Sidcup		
<i>NGR (to 8 figs):</i>	TQ 4542 7232		
<i>Extent of site:</i>	School		
<i>Present use:</i>	c.0.45ha (school)		
<i>Planning proposal:</i>	Partial demolition of existing buildings, construction of extension and laying out of nature garden, external teaching area and car parking.		
<i>Local Planning Authority:</i>	London Borough of Bexley		
<i>Planning application ref/date:</i>	11/00214/FUL		
<i>Date of fieldwork:</i>	7/12/2011-17/01/2012		
<i>Commissioned by:</i>	Open Planning 46-50 Royal Parade Mews Blackheath London SE3 0TN		
<i>Client:</i>	Playle & Partners LLP Crest House 138 Main Road Sidcup DA14 6NY		
<i>Contact name:</i>	Faye Pedersen (Open Planning)		

## Internal Quality Check

<i>Primary Author:</i>	Gareth Shane	<i>Date:</i>	21/02/2012
<i>Revisions:</i>		<i>Date:</i>	
<i>Edited/Checked By:</i>		<i>Date:</i>	21/02/2012

© Archaeological Services & Consultancy Ltd

No part of this document is to be copied in any way without prior written consent.

Every effort is made to provide detailed and accurate information. However, Archaeological Services & Consultancy Ltd cannot be held responsible for errors or inaccuracies within this report.

© Ordnance Survey maps reproduced with the sanction of the Controller of Her Majesty's Stationery Office.

ASC Licence No. AL 100015154

## CONTENTS

Summary.....	4
1. Introduction .....	4
2. Aims & Methods .....	8
3. Archaeological & Historical Background.....	9
4. Results and Conclusions.....	10
5. Acknowledgements .....	13
6. Archive .....	13
7. References .....	14

### Appendices:

1. ASC Watching Brief Monitoring Sheets .....	15
2. Photo List.....	18
3. ASC OASIS Form .....	19

### Figures:

1. General location .....	3
2. Site plan .....	6
4. Proposed development .....	7
5. Monitored footings .....	11

### Plates:

*Cover: Longlands Primary school looking SW*

1. Site stratigraphy .....	12
2. Drainage Run.....	12
1. Footing.....	12

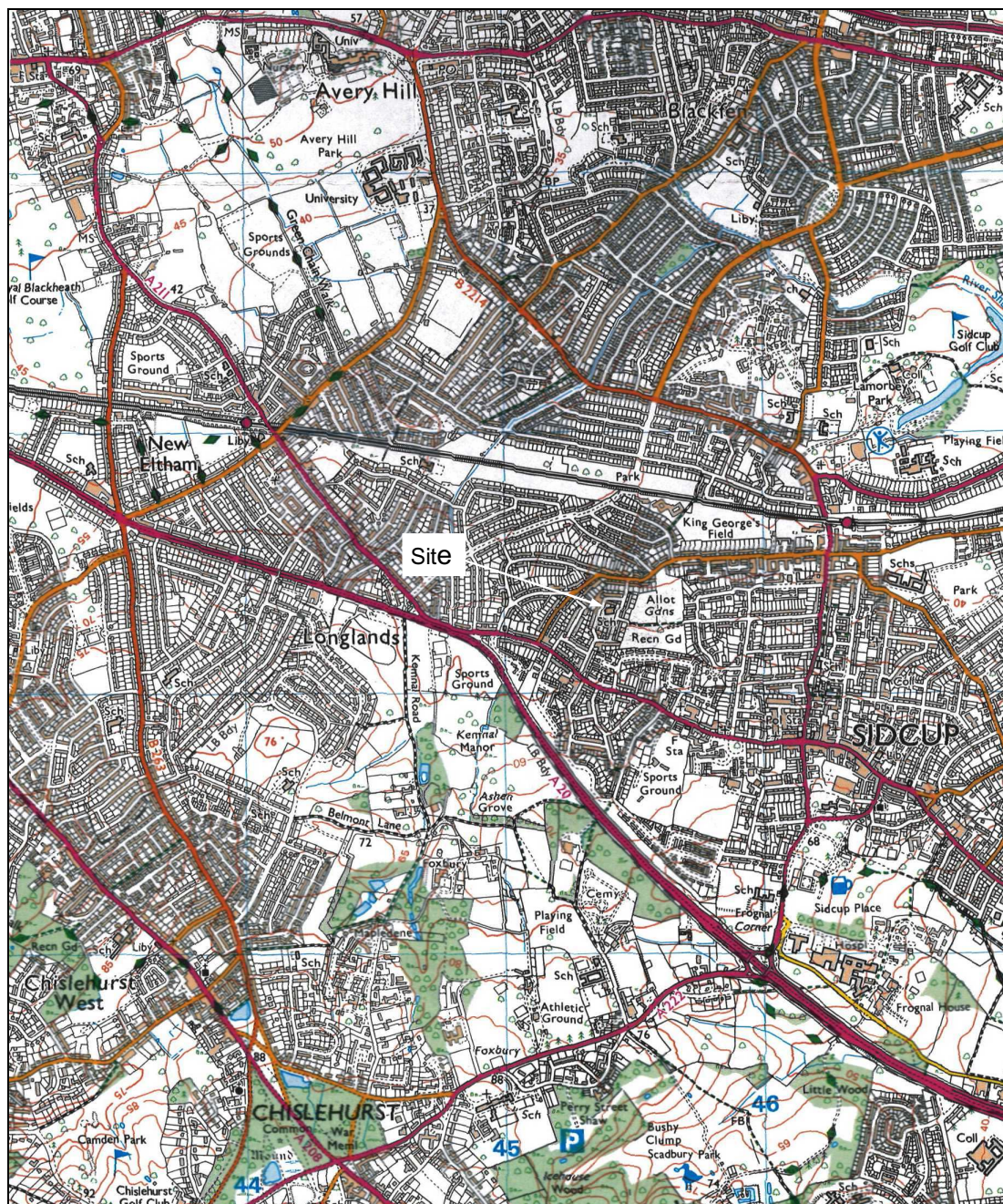


Figure 1: General location (scale 1:25,000)

## Summary

*Between December 2011 and January 2012, a watching brief was carried out at Longlands Primary School, Sidcup, LB Bexley. Foundation trenches were monitored in advance of an extension to the existing school. Three visits were made to the site; on each occasion modern made ground was apparent in all the footing trenches. Consequently no archaeological features or artefacts were observed or recovered.*

## 1. Introduction

1.1 In December 2011 and January 2012 *Archaeological Services and Consultancy Ltd* (ASC) carried out a watching brief at Longlands Primary School, Sidcup, LB Bexley, Kent. The project was commissioned by *Open Planning* on behalf of *Playle & Partners LLP*, and was carried out according to a project design prepared by ASC (Zeepvat 2011), and approved by the archaeological advisor (AA) to the local planning authority (LPA), *Greater London Archaeological Advisory Service (GLAAS)*. The relevant planning application reference is 11/00214/FUL.

### 1.2 *Planning Background*

This watching brief was required under the terms of *Planning Policy Statement 5* (PPS5), as a condition of planning permission for the development of the site.

### 1.3 *Archaeological Services & Consultancy Ltd*

ASC is an independent archaeological practice providing a full range of archaeological services including consultancy, field evaluation, mitigation and post-excavation studies, historic building recording and analysis. ASC is recognised as a *Registered Organisation* by the Institute for Archaeologists and is also accredited ISO 9001, in recognition of its high standards and working practices.

### 1.4 *The Site*

#### 1.4.1 *Location & Description*

The site is on more or less level ground, at an elevation of *c.*42m AOD. The assessment site is situated in Sidcup, in the London Borough of Bexley (Fig.1). It is located *c.*1km northwest of Sidcup town centre and comprises the buildings and grounds of Longlands Primary School, situated between Woodside Crescent, to the west and north, and Woodside Road to the east. The school building is centred on Ordnance Survey National Grid Reference TQ 4542 7232.

The school buildings are situated within a sub-rectangular plot of *c.*0.45ha (Fig. 2). The main building (1) is constructed of red brick, under a slate roof. A detached sectional concrete classroom block (2) is situated at the south end of the plot, and is separated from Longlands Parish Hall by an air raid shelter (3). A second detached classroom of timber construction (4) is situated on the west side of the main building. On the north side of the site is a range of small single-storey brick buildings under monopitch slate roofs, also used for teaching (5). Vehicular access is from Woodside Crescent, and the main

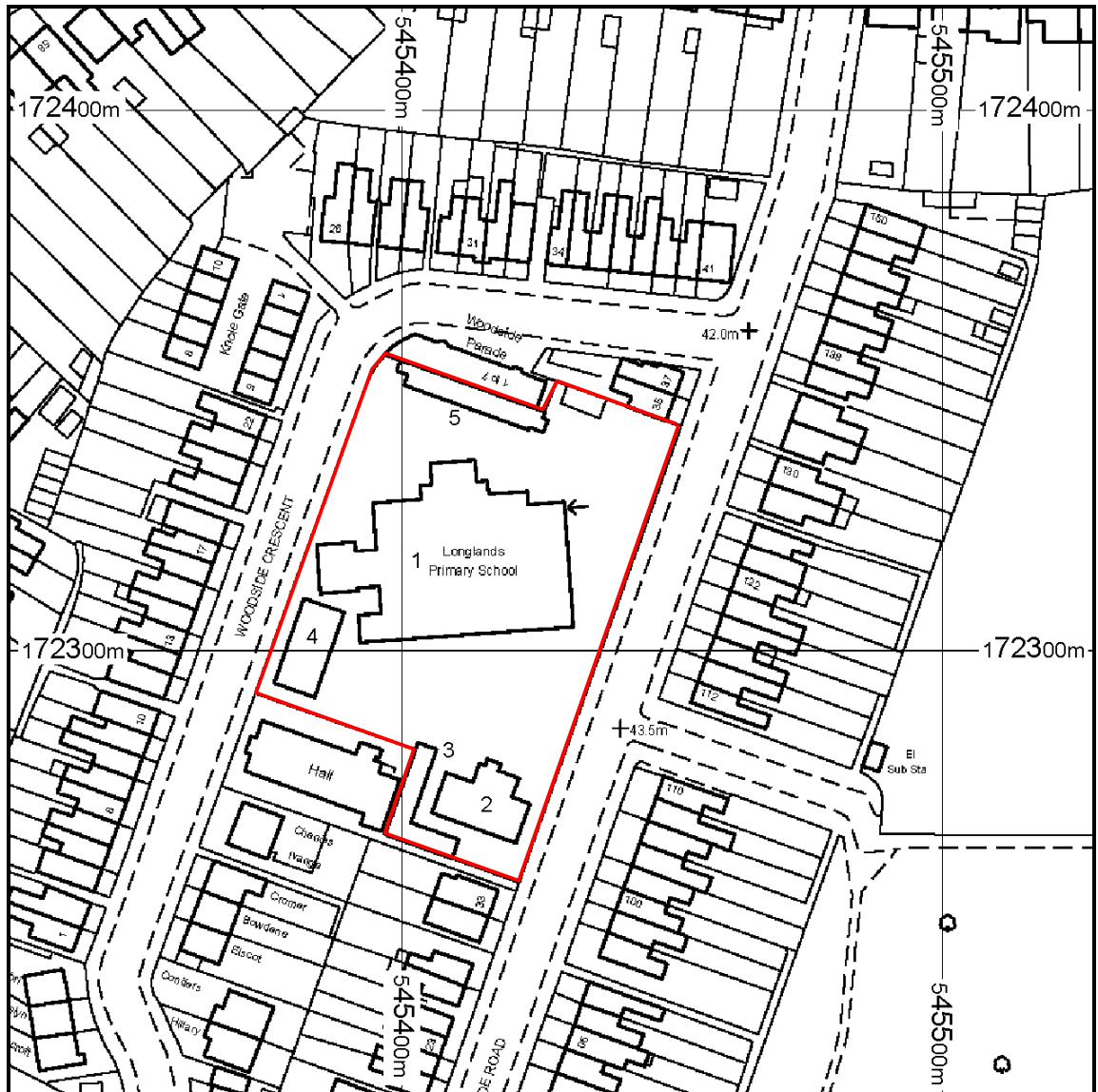
pedestrian access is from Woodside Road. The school yard is surfaced with tarmac and part of the south side of the plot is marked out as a netball court. (Fig. 2).

1.4.2 *Topography & Geology*

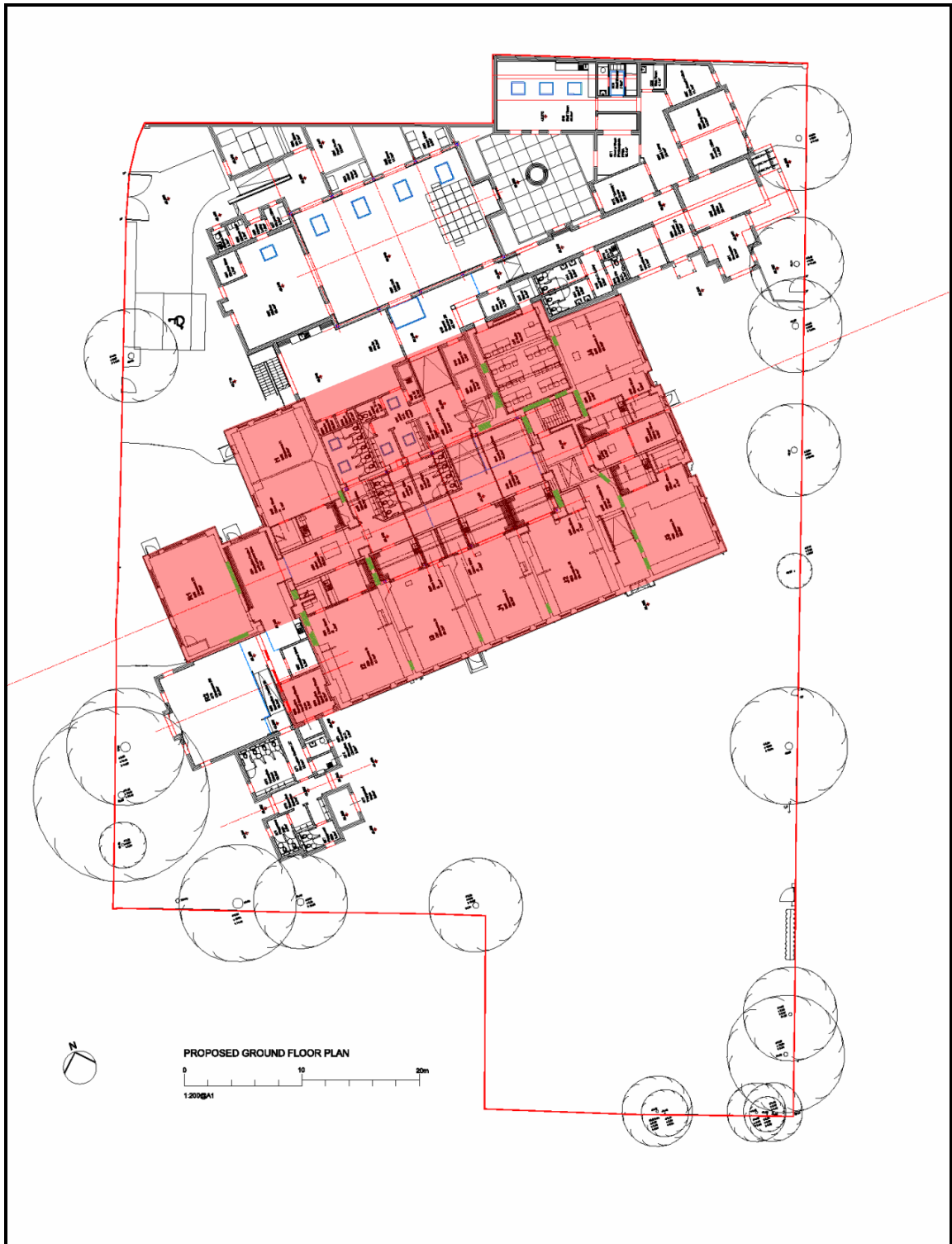
Natural soils in the surrounding area belong to the *Fyfield 4 Association*, comprising deep well-drained loamy and sandy soils over sand and loam (Soil Survey 1983, 571g). The underlying geology comprises Harwich Formation Sand (BGS, Sheet 271).

1.4.3 *Proposed Development*

The proposed development comprises partial demolition of the existing school building, construction of an extension and the establishment of a nature garden, external teaching area and car parking (Fig. 3).



**Figure 2:** Site location (scale 1: 1250)



**Figure 3:** Proposed development (scale 1:500)  
*Retained part of existing building shaded red*

## **2. Aims & Methods**

### **2.1 Aims**

As described in the project design, the aims of the watching brief were:

- To ensure the archaeological monitoring of all aspects of the development programme likely to affect archaeological remains
- To secure the adequate recording of any archaeological remains revealed by the development programme
- To secure the analysis, conservation and long-term storage of any artefactual/ecofactual material recovered from the site

### **2.2 Standards**

The work conformed to the project design, and the requirements of GLAAS, to the relevant sections of the Institute of Archaeologists' *Standard & Guidance Notes* (IFA 2001) and *Code of Conduct* (IFA 2000a), to English Heritage (EH 1991) and GLAAS (GLAAS 2009) guidelines, and to the relevant sections of ASC's own *Operations Manual*.

### **2.3 Methods**

The work was carried out according to the project design, which required:

- A watching brief on ground reduction and excavations for footings and buried services for the extensions to the existing school building
- groundwork excavation and stripping to be conducted under archaeological supervision in respect of the area of the new build footprint and nearby car park and access road

### **2.4 Constraints**

The project was carried out according to the agreed methodology without constraint. Work on the car park and access road did not form part of this phase of development.

### **3. Archaeological & Historical Background**

- 3.1 The following section provides a summary of the readily available archaeological and historical background to the development site and its environs. The site lies within an area of archaeological and historical interest, and has the potential to reveal evidence of a range of periods.

This section has been compiled with information from an archaeological impact assessment (Fell 2010) and a historic building assessment (Zeepvat 2010) prepared for the site, in support of the planning application.

#### **2.2 Archaeological Impact Assessment**

The impact assessment concluded that:

*...few archaeological remains are known in this area of Sidcup and none are currently known within the assessment areas. ...The school site was laid out as a cricket pitch prior to the construction of the school buildings and is likely to have undergone a significant degree of disturbance. The school site is considered to offer moderate potential for the survival of archaeological remains.*

#### **2.3 Historic Building Assessment**

The historic building assessment noted that:

*The school was founded in 1907, as part of the rapid urbanisation then taking place in the area. Three classrooms were added to the building in 1910. Probably in the late 1930s or early 1940s, the school grounds were extended in the south-east corner, and a sectional concrete building was erected, followed by an 'air raid shelter'. The next major additions were made to the main building probably in the 1980s, comprising a toilet block on the north side of the building, and a classroom to the west. More recently, a timber classroom block was erected in the south-west corner of the schoolyard.*

*The main school building appears largely unaltered externally: the 1980s extensions were sympathetically designed and built, and do not clash with the early 20<sup>th</sup>-century fabric. Internally, the school building retains much of its original character, such as partly exposed roof structures, internal glazed partitions, and doors.*

*In addition to the main building, the assessment examined the 'air raid shelter' in the south-east corner of the site, and a range of structures along the northern boundary. The former must have been built after the adjoining concrete building, probably in the late 1930s or early 1940s. Its structure is typical of an above-ground shelter, though it would have been too small to accommodate all the staff and pupils from the school. It has subsequently been modified by the addition of windows and doors, and by partitioning, etc, internally. The structures on the northern boundary appear to have been built at the same time as the school, and were possibly playground shelters or outside toilets. They were partly rebuilt and converted for use as small teaching units in the late 20<sup>th</sup> century, possibly around the same time as the northern and western extensions were constructed. Neither the air raid shelter nor the latter range is assessed to be of any great significance.*

## **4. Results & Conclusions**

### **4.1 Results**

The site was monitored for three non-consecutive visits during December 2011 and January 2012. Approximately 70% of the footings were subject to archaeological supervision (Fig. 4). Observations of the strata encountered are described below. No archaeology was observed during the course of the watching brief (Appendix 1).

A typical section of the strata consisted of:

- 000-250mm Brick rubble ***Made ground***
- 250-500mm ***Tarmac***
- 500-1000mm Gravel and ballast ***Natural***

The site strata consisted predominantly of modern made ground, imported levelling material and buried crushed tarmac. Natural gravel and ballast lay beneath this, but no archaeological features were observed. The spoil heaps were visually scanned for artefacts but none were found.

### **4.2 Conclusions**

No archaeology was observed within the footing trenches. No topsoil or subsoil was found on site having been replaced by imported levelling material consisting of brick and tarmac in the modern period. The natural ground was located in the majority of the footing trenches but it was not possible to ascertain what proportion has been truncated by modern activity and if any archaeology was ever present on this site.

### **4.3 Confidence Rating**

The watching brief was carried out in dry and cold weather, with good light conditions and full cooperation was received from the client and on site contractors. Accordingly a high confidence rating is attached to the results of this investigation.

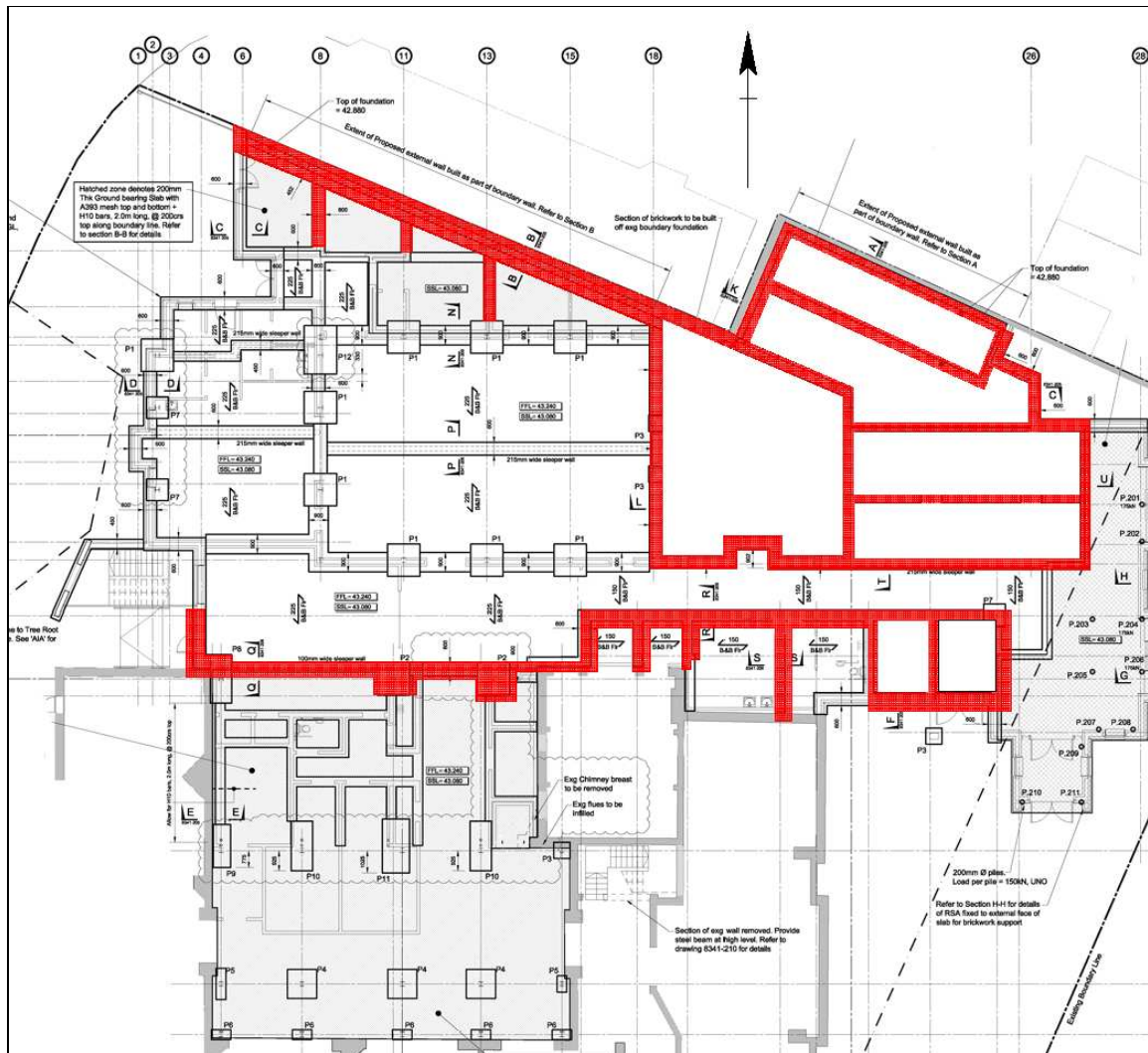


Fig 4: Monitored footings in red (scale 1:250)



**Plate 1:** Typical stratigraphy



**Plate 2:** Drainage run



**Plate 3:** Typical footing

## **6. Acknowledgements**

The project was commissioned by Open Planning on behalf of Playle & Partners LLP. The writer is grateful to Faye Pederson and Richard Tallon for their assistance. The project was monitored by Mark Stevenson of English Heritage on behalf of the local planning authority.

The project was managed for ASC by Bob Zeepvat BA MifA. Fieldwork was carried out by Martin Cuthbert BA PifA and Gareth Shane BSc. The report was prepared by Gareth Shane and edited by Bob Zeepvat.

## **7. Archive**

7.1 The project archive will comprise:

1. Project Design
2. Report
3. Clients site plans
4. Site Monitoring Sheets
5. Site record drawings
6. List of photographs
7. B/W prints & negatives
8. CDROM with copies of all digital files.

7.2 The archive will be deposited with London Archaeological Archives & Research Centre (LAARC).

## 8. References

### *Standards & Specifications*

- Allen J L & Holt A St J, 1986 (with later updates) *Health & Safety in Field Archaeology*. Federation of Archaeological Managers & Employers (London).
- EH 1991 *The Management of Archaeological Projects*, 2<sup>nd</sup> edition. English Heritage (London).
- GLAAS 2009 *Standards Paper 3: Fieldwork*. Greater London Archaeology Advisory Service Standards for Archaeological Work: External Consultation Draft. English Heritage.
- IFA 2000a Institute for Archaeologists' *Code of Conduct*.
- IFA 2000b Institute for Archaeologists' *Code of Approved Practice for the Regulation of Contractual Arrangements in Field Archaeology*.
- IFA 2001 Institute for Archaeologists' *Standard & Guidance documents (Desk-Based Assessments, Watching Briefs, Evaluations, Excavations, Investigation and Recording of Standing Buildings, Finds)*.
- Zeepvat R J, 2011 *Project Design for Archaeological Watching Brief: Longlands Primary School, Sidcup*. ASC rep. ref. **1434/SLS/2r**

### *Secondary Sources*

- BGS *British Geological Survey 1:50,000 Series, Solid & Drift Geology*.
- Fell, D 2011 *Archaeological Impact Assessment: Longlands Primary School, Sidcup, London Borough of Bexley*. ASC rep ref. **1384/SLS/1**.
- Soil Survey 1983 *1:250,000 Soil Map of England and Wales, and accompanying legend* (Harpندن).
- Zeepvat R J, 2011 *Historic Buildings Impact Assessment: Longlands Primary School, Sidcup*. ASC rep. ref. **1384/SLS/2**

## Appendix 1: Monitoring Sheets



A.S.C. LTD

### WATCHING BRIEF RECORD

Project: Longlands Primary School SIDCUP.		Project No/Code: 1434 / SLS	Sheet: 1 of 3
Client/Developer		Date of visit: 7/12/11	
Contact: Steve Coleman		Phone: 01753 508150	
Duration of Visit (inc. travel):	Start: 11:30	Finish: 1800	
Completed by: M.C.			
Development Type:			
Footings <input checked="" type="checkbox"/>	Services	Roads	Levelling
			Quarrying
			Pipelines
			Other (specify):
Site & weather conditions: dry, windy + cold			
Observations: began excavation of outer foundation trenches. (P.T.O) 0.7m wide. In deep - 0.5m = modern made ground brick + crushed tarmac over 0.5m of mid brown silty-clay - firm with freq rounded pebbles - poss natural.  No arch noted  further borings trenches will hopefully indicate that Primary soil is indeed natural.			
Comments: phone them on monday 12/12/11 to see when next visit is required.			



WATCHING BRIEF RECORD

Page 16



A.S.C. LTD

WATCHING BRIEF RECORD

Project: 1434 / SLS		Project No/Code: 1434 / SLS		Sheet: 3 of 3	
Client/Developer: SIDCUP Longlands School		Date of visit: 17/01/2012			
Contact:		Phone:			
Duration of Visit (inc. travel):	Start: 8:45 am	Finish: 3:30 pm			
Completed by: G. Shane					
Development Type:					
Footings <input checked="" type="checkbox"/>	Services	Roads	Levelling	Quarrying	Pipelines
Other (specify):					
Site & weather conditions: cold, dry, good light					
Observations: Arrived 10:45 am. Footings have been machined all footings cut made ground <u>level</u> to about 500mm and below that <u>no</u> sand/ballast. The Eastern half of the site shows no densification visible & a layer of Tarmac obviously previously tarmaced spoil heaps. Scanned no archaeological observed in trenches or spoil heaps.					
Comments: Client will inform us about next footings probably in a few weeks					

For sketch plan, use separate sheet

©ASC 2011

## Appendix 2: List of Photographs

SITE NAME: Longlands Primary School			SITE NO/CODE: 1434/SLS
Shot	B&W	Digital	Subject
1	-	√	Footings monitored on 7/12/11
2	-	√	Footings monitored on 7/12/11
3	-	√	Footings monitored on 7/12/11
4	-	√	General shot looking southwest
5	-	√	Footings monitored on 14/12/11
6	-	√	Footings monitored on 14/12/11
7-22	-	√	Footings monitored on 17/01/12
8	√	-	General shot of school 17/01/12

## Appendix 3: ASC OASIS Form

PROJECT DETAILS			
Project Name:	Longlands Primary School, Sidcup	OASIS reference:	Archaeol-2 104602
Short Description:	Between December 2011 and January 2012, a watching brief was carried out at Longlands Primary School, Sidcup, LB Bexley. Foundation trenches were monitored in advance of an extension to the existing school. Three visits were made to the site; and on each occasion modern made ground was apparent in all the footing trenches. Consequently no archaeological features or artefacts were observed or recovered.		
Project Type:	Watching brief		
Previous work: (eg. SMR refs)	None	Site status: (eg. none, SAM, listed)	None
Current land use:	Primary school	Future work: (yes/no/unknown)	Unknown
Monument type:	N/a	Monument period:	N/a
Significant finds: (artefact type & period)	None		
PROJECT LOCATION			
County:	Kent	OS reference: (8 figs min)	TQ 4542 7232
Site address: (+ postcode if known)	Longlands Primary School, Woodside Road, Sidcup, London Borough of Bexley		
Study area: (sq. m. / ha)	c. 0.45ha	Height OD: (metres)	c.42m AOD
PROJECT CREATORS			
Organisation:	Archaeological Services & Consultancy Ltd		
Project brief originator:	N/a	Project design originator:	Bob Zeepvat BA MifA
Project Manager:	Bob Zeepvat	Director/Supervisor:	Martin Cuthbert/ Gareth Shane
Sponsor / funding body:	Playle and Partners LLP		
PROJECT DATE			
Start date:	7/12/11	End date:	17/01/2012
PROJECT ARCHIVES			
	Location (Accession no.)	Content (eg. pottery, animal bone, files/sheets)	
Physical:	London Archaeological Archives & Research Centre (LAARC).	None	
Paper:		Project Design, Report, monitoring sheets, architects plans etc.	
Digital:		CD Rom with all digital data	
BIBLIOGRAPHY (Journal/monograph, published or forthcoming, or unpublished client report)			
Title:	Watching Brief: Longlands Primary School, Woodside Road, Sidcup, London Borough of Bexley		
Serial title & volume:	ASC Ltd Report ref. 1434/SLS/3		
Author(s):	Gareth Shane BSc (Hons)		
Page nos	19	Date:	21/02/2012