

Archaeological Services & Consultancy Ltd

**ARCHAEOLOGICAL STRIP & RECORD:  
ELM TREE FARM  
PIRTON  
HERTFORDSHIRE**

*on behalf of Chase Park Construction Ltd*



**Karin Semmelmann MA AIFA**

**September 2006**

**ASC: 747/PET/2**

Letchworth House  
Chesney Wold, Bleak Hall,  
Milton Keynes MK6 1NE  
Tel: 01908 608989 Fax: 01908 605700  
Email: [office@archaeological-services.co.uk](mailto:office@archaeological-services.co.uk)  
Website: [www.archaeological-services.co.uk](http://www.archaeological-services.co.uk)



## Site Data

<i>ASC project code:</i>	PET	<i>ASC Project No:</i>	747
<i>Event No:</i>		<i>Accession No:</i>	
<i>County:</i>	Hertfordshire		
<i>Village/Town:</i>	Pirton		
<i>Civil Parish:</i>	Pirton		
<i>NGR (to 8 figs):</i>	TL 1499 3173		
<i>Present use:</i>	Farmyard		
<i>Planning proposal:</i>	Construction of 12 dwellings		
<i>Planning application ref/date:</i>	1/04/1139		
<i>Local Planning Authority:</i>	North Hertfordshire District Council		
<i>Date of fieldwork:</i>	09.03.06 – 16.09.06		
<i>Client:</i>	Chase Park Construction Ltd The Old Plumber's Shop The Woodyard Castle Ashby Northampton NN7 1LF		
<i>Contact name:</i>	Lindsay Winter		
<i>Telephone</i>	01604 696100	<i>Fax:</i>	01604 696102

## Internal Quality Check

<i>Primary Author:</i>	Karin Semmelmann	<i>Date:</i>	5 <sup>th</sup> October 2006
<i>Revisions:</i>		<i>Date:</i>	
<i>Edited/Checked By:</i>		<i>Date:</i>	

© Archaeological Services & Consultancy Ltd

No part of this document is to be copied in any way without prior written consent.

Every effort is made to provide detailed and accurate information. However, Archaeological Services & Consultancy Ltd cannot be held responsible for errors or inaccuracies within this report.

© Ordnance Survey maps reproduced with the sanction of the Controller of Her Majesty's Stationery Office.

ASC Licence No. AL 100015154



## CONTENTS

Summary.....	4
1. Introduction .....	4
2. Aims & Methods .....	6
3. Archaeological & Historical Background .....	7
4. Results .....	9
5. Conclusions .....	17
6. Acknowledgements .....	18
7. Archive .....	18
8. References .....	19

### Appendices:

1. Monitoring Sheets .....	20
2. List of Photographs.....	58
3. ASC OASIS Form .....	59
4. SMR Summary Sheet .....	61

### Figures:

1. General location .....	3
2. Site location.....	5
3. Layout of archaeological features .....	15
4. West facing section of feature [508].....	16
5. West facing section of feature [508].....	16
6. North facing section of feature [1103] .....	16
7. West facing section of features [1202] & [1204] .....	16

### Plates:

#### *Cover: Farm buildings prior to development*

1. Feature 302 .....	12
2. Soakaway 514 in Plots 5 & 6 (looking north) .....	12
3. NE corner of Soakaway 514.....	12
4. SE corner of Soakaway 510 .....	12
5. South facing section of Feature 502 .....	12
6. West facing section of Pit 506.....	12
7. Feature 508, looking east 1.....	13
8. Eastern terminus of Ditch 702 .....	13
9. Stanchions in Plots 9-12 .....	13
10. Ditch 1103 seen in section in Plots 9-12 .....	13
11. Profile of Ditch 1103 .....	13
12. Pit in NW corner of Plots 7&8 soakaway .....	13
13. Feature 1202 in drainage trench SE of Plots 1 & 2 .....	14
14. Feature 1204 in drainage trench SE of Plots 1 & 2 .....	14
15. Soakaway to the rear of Plots 7 & 8 .....	14

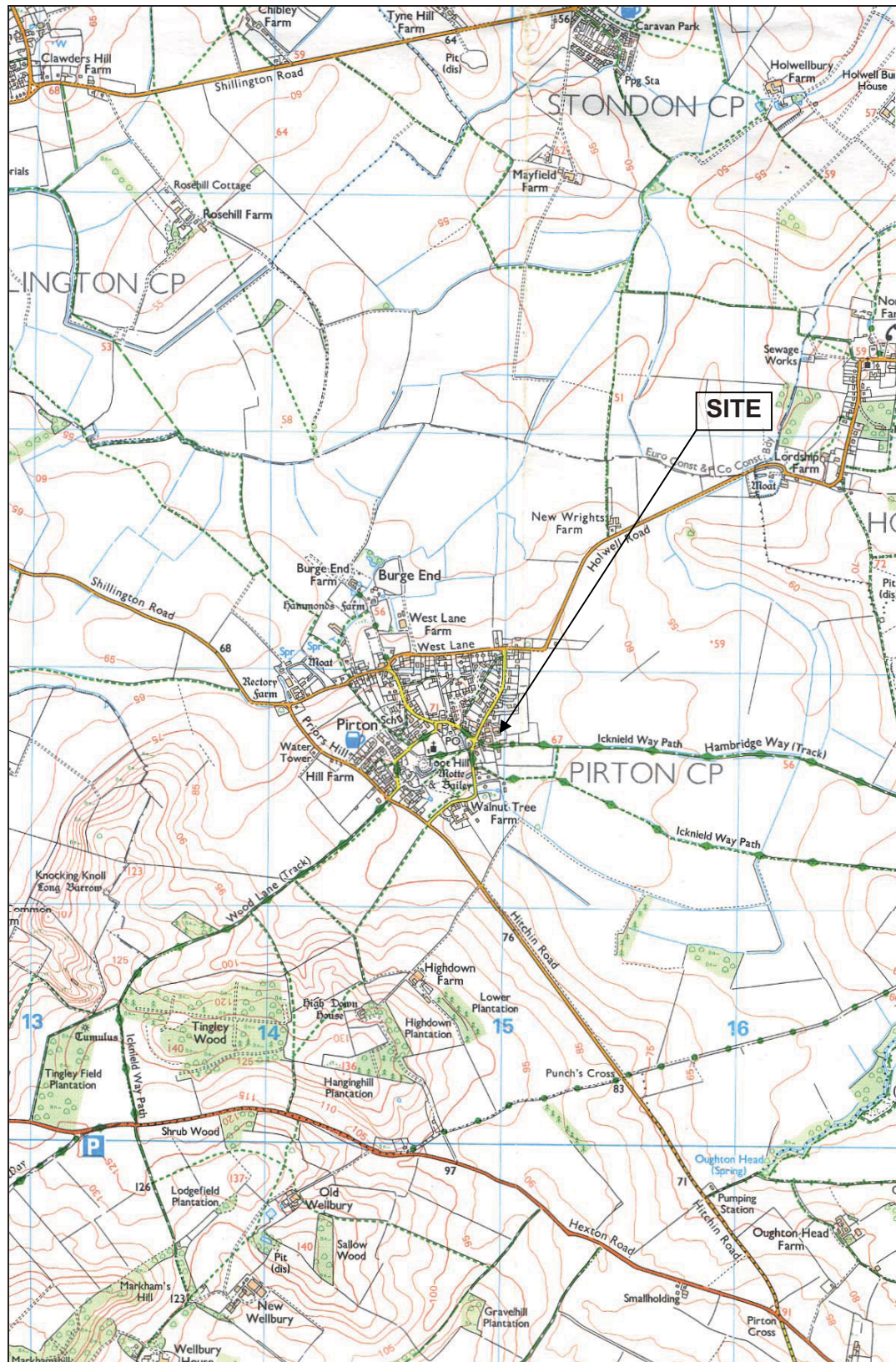


Figure 1: General location (scale 1:25,000)

## Summary

*In 2006 Archaeological Services and Consultancy Ltd (ASC) carried out a watching brief at Elm Tree Farm, Pirton, Hertfordshire in response to proposals for the construction of 12 private dwellings. The site lies on the eastern side of the medieval village immediately north of Hambridge Way. The archaeological evidence within and around Pirton indicates that settlements have been established close to the site from the Iron Age onwards. The medieval village, which developed from an Anglo-Saxon settlement, is centred on a 12<sup>th</sup> century motte and bailey castle and a contemporaneous church within the bailey precinct.*

*The earliest archaeological remains revealed on Elm Tree Farm are medieval ditches, which suggests that the site was largely peripheral to pre-medieval settlement activity, but that it may have been incorporated into the agricultural system by the later middle ages. Much of the archaeological activity on the site appears to have been associated with the farm and is of fairly recent date. A few post-medieval features were encountered, a closer date for which was not possible due to the paucity of associated finds.*

## **1 Introduction**

1.1 In 2006 *Archaeological Services and Consultancy Ltd (ASC)* carried out a watching brief at Elm Tree Farm, Pirton, Hertfordshire (NGR TL 1499 3173: Fig. 1). The project was commissioned by *Chase Park Construction Ltd*, and was carried out according to a project design prepared by ASC (Rouse 2005), and a brief (Smith 2005) prepared on behalf of the local planning authority (LPA), *North Hertfordshire District Council*, by their archaeological advisor (AA), *Hertfordshire County Council*. The relevant planning application reference is 1/04/1139.

### 1.2 *Planning Background*

This watching brief has been required as a planning condition under the terms of *Planning Policy Guidance Note 16 (PPG16)*, in response to proposals for the construction of 12 private dwellings.

### 1.3 *Location*

The development site is located on the northern side of the Hambridge Way, which lies on the eastern side of the village of Pirton, Hertfordshire, at NGR TL 1499 3173 (Fig. 1), in the district of North Hertfordshire.

### 1.4 *Description*

The site is bounded by Hambridge Way to the south, by private dwellings to the north and the west and by open land to the east.

### 1.5 *Geology & Topography*

The soils of the area are of the *Wantage 2 Association*, and are characterised as *shallow well drained calcareous silty soils over argillaceous chalk associated with similar soils affected by groundwater. Deeper well drained coarse loamy soils in places. Complex soil patterns locally.* The underlying geology consists of chalk (Soil Survey, 1983, 342d). The site is located on a slight slope, and lies at an elevation of c.70m AOD.



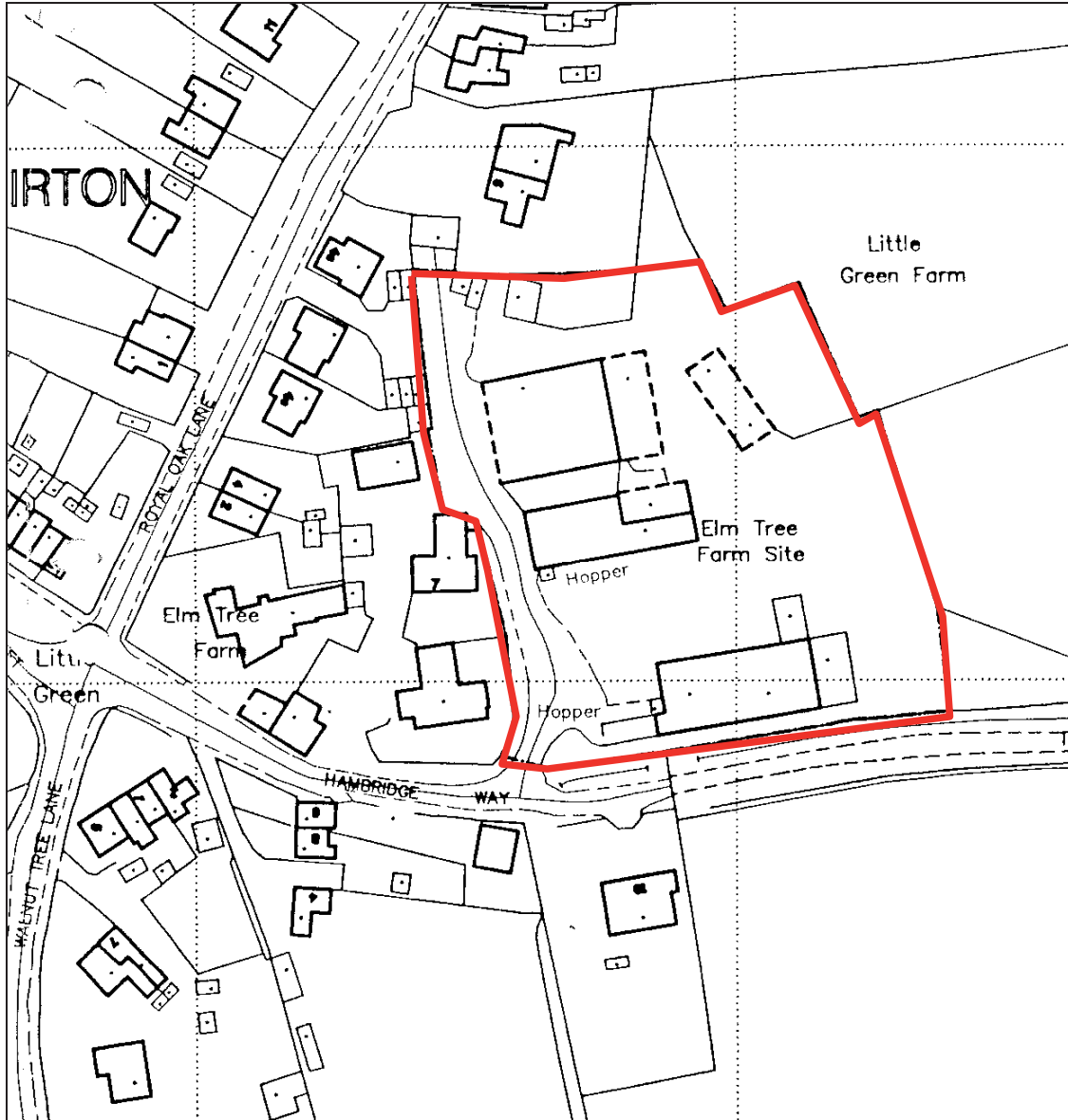


Figure 2: Site plan (scale 1:1250)

## **2 Aims & Methods**

### **2.1 Aims**

As described in the brief (Section 1), the aims of the watching brief were:

- To ensure the archaeological monitoring of all aspects of the development programme likely to affect archaeological remains
- To secure the adequate recording of any archaeological remains revealed by the development programme
- To secure the analysis, conservation and long-term storage of any artefactual/ecofactual material recovered from the site.

### **2.2 Standards**

The work conformed to the project design, to the relevant sections of the Institute of Archaeologists' *Code of Conduct* (IFA 2000) and *Standard & Guidance Notes* (IFA 2001), to the Association of Local Government Archaeological Officers East of England Region *Standards for Field Archaeology in the East of England* (ALGAO 2003), and to the relevant sections of ASC's own *Operations Manual*.

### **2.3 Methods**

The work was carried out according to the brief (Section 3), which required:

- Soil and overburden stripping to archaeological/natural horizons of each of the proposed dwellings' footprints under archaeological supervision
- The planning of any features thereby revealed after the exposed surfaces have weathered
- The rapid investigation and recording of any archaeological features/deposits
- Examination of any service and foundation trenches and the subsequent recording of any exposed archaeological deposits
- Examination of spoil heaps for archaeological material
- A programme of post-fieldwork analysis, archiving and publication.

### **2.4 Constraints**

Due to situations beyond the control of the author, who also carried out most of the fieldwork, the methodology was amended as necessary to incorporate a greater element of a continuous watching brief. It is not felt that this was detrimental to the overall aims of the project or for the potential for observing archaeological remains

### **3 Archaeological & Historical Background**

#### **3.1 General**

The site lies within Area of Archaeological Significance No. 75, as designated on the Local Plan. This notes that the site lies within the historic core of the village of Pirton, which is a medieval settlement recorded in the Domesday Book. The village, which includes an early medieval church and castle, is surrounded by evidence of an extensive medieval landscape in the form of earthworks and crop-marks.

#### **3.2 Prehistoric** *(before 600BC)*

A number of prehistoric artefacts including a neolithic greenstone axe, a Neolithic scraper and a Bronze Age flint spearhead, two bronze axes and a spearhead have found to the southwest of Pirton. A polished Neolithic stone axe was found in 1830 to the north of the Elm Tree Farm and a polished greenstone axe was recovered from Fakeswell to the north-east of the site and only c.100m from the Holwell Road.

#### **3.3 Iron Age** *(600BC-AD43)*

Significant prehistoric activity of the Bronze Age/Iron Age is also known along the route of the Icknield Way and the Chiltern escarpment, with the construction of burial mounds, other ritual features and defensive works. However, the earliest settlement evidence in the immediate area was located in Danes Field, to the southwest of the present village, where an Iron Age and early Saxon cemetery have been identified.

#### **3.4 Roman** *(AD43-c.450)*

Danes Field also revealed evidence for a 2<sup>nd</sup> century Romano-British settlement and another area of settlement activity is known from Bury Field to the southwest of the village. Roman and Saxon spindle whorls have also been found at Pollards Way to the west of the current study area.

#### **3.5 Saxon** *(c.450-1066)*

Excavations in 1995 revealed an Saxon settlement with an associated church to the rear of the Fox public house. The presence of a 'Toot Hill' in the village is likely to be of some significance as this is a derivation of 'Moot Hill', which was generally associated with the meeting places of local government bodies in the Saxon period.

The village is recorded as Peritone in the Domesday Survey of 1086 and had been held by Archbishop Stigand prior to the Norman Conquest (Williams & Martin 1992, 383).

#### **3.6 Medieval** *(1066-1500)*

After the Conquest the manor of Pirton, which included 4 mills and woodland for 500 pigs was awarded to Sir Ralph de Limesy, whose family held the estate until the 12<sup>th</sup>

century. It was worth £20 at the time of the survey and had been worth £25 before 1066 (*ibid.* 382-3).

The Saxon settlement to the rear of The Fox continued in use after the Conquest and further evidence for medieval activity has been discovered during archaeological intervention at Walnut Tree Farm. A motte and bailey castle was constructed at Toot Hill, probably in the early 12<sup>th</sup> century during a period of political unrest in the reign of King Stephen. According to Biddle the motte, which was never completed and the castle was associated with a rectangular village enclosure. Trial excavations at the site of the motte-and-bailey revealed Saxo-Norman pottery, and further evidence of the remains of the village enclosure in the form of ditches to the south and west.

The present village is located outside and to the north-west of the enclosure. The Old Hall of Pirton, dated to 1609, lies to the south of the village and has become a public house. On the edge of the parish, c. 3km north-west of the Elm Tree Farm site, the early 17<sup>th</sup> century (or earlier) moated Pirton Grange is situated in its own parkland. High Down, c.1.1km south of the site, was begun c.1599 by Thomas Docwra, lord of the manor. The parish church of St Mary, which lies within the unfinished bailey dates from the 12<sup>th</sup> century with considerable 14<sup>th</sup> century alterations. All of the church windows date to the 15<sup>th</sup> century (Archaeological Solutions 2005).

## 1.7 Site Specific

An archaeological evaluation of the site was undertaken in 2004, which revealed archaeological features towards the periphery of the site. These included two undated postholes and three ditches that contained medieval pottery (Archaeological Solutions, 2005).

The remains of a north-south orientated ditch (F1007), which contained 10<sup>th</sup>-13<sup>th</sup> century pottery sherds, were encountered in the northwest part of the site. It was 0.90m wide x 0.49m deep with steeply sloping sides and a rounded base. A similar ditch ran parallel to it on its eastern side and beyond this lay a pit or foundation trench. Neither of these two features produced any datable artefacts.

A large (1.45m wide x 0.62m deep), north-south orientated boundary ditch was revealed in a trench to the south of the site. The ditch was recut and contained 13<sup>th</sup>-16<sup>th</sup> century pottery fragments in both the later fills.

An east-west aligned ditch containing 10<sup>th</sup>-13<sup>th</sup> century pottery fragments was revealed in a trench on the eastern side of the site. It was 1.05m wide x 0.15m deep with steeply sloping sides and a flat base. Two postholes were excavated to the north of this ditch, neither of which produced any datable artefacts.

## 4 Results

### 4.1 *Stratigraphy*

The stratigraphy of most of the site was fairly homogeneous and consisted of a layer of modern debris over c.0.30m of mid-brown silty clay, which overlay the pale grey natural clay. Sand deposits approximately 0.70m deep were, however, present in the southern part of the site.

### 4.2 *Plots 1 & 2*

An east-west aligned ditch [202] measuring 0.95m wide x 0.21m deep was revealed running east-west within the centre of the area. The fill [201] was a mid-brown silty clay which contained brick/tile and a single post-medieval pottery fragment. This was initially thought to have been the western extension of an east-west aligned ditch encountered at the eastern end of the site during the 2004 evaluation. On reconstructing the plans, it was seen that this was unlikely, unless the ditch was curved rather than straight. As it was not observed elsewhere on the site, this remains a distinct possibility.

### 4.3 *Plots 3 & 4*

A rectangular feature [302], measuring 0.90 x 0.69 x 0.22m and containing post-medieval pottery sherds, a clay pipe fragment, glass and brick/tile within a dark greyish brown fill [301] was revealed during ground reduction. It lay towards the centre of the southern part of the area and was aligned N-S. It appeared to be a 19<sup>th</sup> century planter, and the farmer confirmed that this part of the site had lain within the garden belonging to the former farmhouse on the site (Plate 1).

During the 2004 evaluation, three features were revealed in the trench excavated within this area, of which the easternmost one produced some medieval pottery (Archaeological Solutions 2005). The only evidence for these features during the current archaeological investigation was for the western two ditches, which were observed in the northern edge of the ground reduction.

### 4.4 *Plots 5 & 6*

This area contained a quantity of features, most of which were modern. A soakaway [514] measuring 7.0m long x 1.50m wide was revealed in the southwest corner of the area during ground reduction. This was later breached during trench excavation and was found to be 0.95m deep and containing modern debris. The soil to the south of the soakaway was cess-stained (Plates 2-3).

A second soakaway [510] was encountered during trench excavation (Plate 4). This lay east of and ran parallel to soakaway [514]. This contained Fletton bricks amongst other debris within its fill [509] and still had pipes running into it. The bricks and *in situ* drainage pipes could indicate that this was the more recent of the two soakaways.



A single posthole [512], measuring 0.30m in diameter x 0.10m deep with straight sides and a flat base was found near the northern edge of the reduced area. It was filled with grey clay [511] and appeared to have been for a telegraph pole.

A possible pit [502] containing dark grey silty clay [501] was revealed in the northern trench (Plate 5). It measured 0.75m wide x 0.15m deep and was located approximately 0.20m from the western trench edge and 0.85m below the reduced ground surface. No finds were observed.

A more substantial pit [506] was revealed in the eastern side of the plot (Plate 6). It lay below a layer of chalk [504] in an area previously containing a building. The feature was 5.45m wide x 0.40m deep and contained a mid brown silty clay fill with no visible finds. The southern end of the pit had a contaminated area 0.36m wide x 0.22m deep [509], which was probably associated with the drainage pipe revealed during the ground reduction.

Pit [508] was revealed to the south of pit [506]. It was 2.0m wide x 0.60m deep and contained a mid- brown silty clay with occasional post-medieval brick/tile (Plate 7).

#### 4.5 *Plots 7 & 8*

The stratigraphy in Plots 7 & 8 changed to include a *c.*0.80m deep layer of sand above the natural. Above this was a thin layer of subsoil covered by very mixed, loose overburden of building debris with frequent glass bottles and modern pottery fragments.

An east-west aligned linear feature [702] was revealed in the south-western area of Plot 8. This was 0.90m wide, 0.40m deep and contained a mid greyish brown silty clay fill [701] with frequent stones. A single medieval potsherd and a fragment of animal bone were recovered (Plate 8).

#### 4.6 *Plots 9 - 12*

Plots 9-12 lay in an area formerly occupied by a barn. A 15-20cm layer of redeposited chalk was seen to lie over the subsoil in the northern trench. This extended along the entire area, reaching a depth of 0.30m in the northwest corner. The stratigraphy in the southwest corner, however, showed that this lay outside the former building. There was a 0.20m layer of tarmac over a 0.70cm layer of sand, which lay over the clay natural. A shallow deposit of mid-greyish brown subsoil appeared between the tarmac and the sand further north.

A modern drain was revealed 1.40m from the eastern edge of the plots and four stanchions [1101, 1106, 1108 & 1110] were uncovered to the west of this. The stanchions were between 0.90 and 1.0m<sup>2</sup> and were filled with chalk containing modern building debris (Plate 9).

A ditch [1103], 1.80m wide and 0.90m deep, containing a mid-brown fill [1102] was evident towards the western end of the plots (Plates 10-11). This was seen to extend further northwards in the drainage trenches that were excavated to the southeast of Plots 1 & 2. Two unstratified medieval pottery fragments were found in association

with this feature. A re-cut ditch was investigated in this area during the 2004 evaluation and was found to contain 13-16<sup>th</sup> century pottery in the later ditch (Archaeological Solutions 2005). Although it is unlikely that the re-cut ditch and ditch [1103] are not part of the same linear, there was no evidence to suggest that ditch [1103] had been re-cut.

A single posthole [1105] lay in the southwest corner of the area. It was 30cm in diameter and contained a reddish brown fill with some wood remains, which would suggest that it was relatively modern.

The ground was reduced by *c.*0.20m to the rear of Plots 11 and 12 revealing the remains of either a stanchion or a brick wall approximately 2.90m south of the rear wall of the plot.

#### 4.7 *Drainage trenches and Soakaways*

The soakaway to the rear of Plot 12 measured 2 x 2 x 2.50m. The stratigraphy consisted of *c.*0.50m of subsoil over natural clay. No archaeological features or finds were revealed.

The soakaway to the rear of Plots 5 & 6, which was 4.50 x 4.0 x 2.70m deep, had a modern cess pit in the northwest corner. The stratigraphy within the soakaway consisted of natural clay below a 0.50m deep layer of subsoil.

The soakaway at the northern boundary was 2.50m<sup>2</sup> x 1.40m deep. No features or finds were revealed.

The soakaway to the rear of Plots 7 and 8 was 3.30m<sup>2</sup> and approximately 3.25m deep. The stratigraphy consisted of *c.*0.50m of overburden above a 0.70m deep layer of sand, which overlay the natural clay.

Three features were revealed in the drainage trenches to the southeast of Plots 1 & 2. The northernmost feature [1202] in the west facing section was at least 4.10m long and 1.25m deep. It contained a mid-greyish brown fill with no finds [1201]. The southernmost feature in the same section [1204], which was 1.10m deep contained a mid brown clay fill with a single post-medieval brick/tile fragment [1203]. Both features had sloping sides but their full extent was not revealed. The east facing section contained what appeared to be a continuation of ditch [1103]. The lack of finds in features [1202] and [1204] would suggest that they were east-west aligned ditches that may have joined ditch [1103]. There was, however, no evidence for this in the trench sections (Plates 13-14).

A linear feature was revealed in the drainage trench to the west of Plots 5 & 6 [516]. This measured 0.80m wide and 0.40m deep. No datable finds were observed.



**Plate 1:** Feature 302



**Plate 2:** Soakaway 514 in Plots 5 & 6 (looking north)



**Plate 3:** NE corner of Soakaway 514



**Plate 4:** SE corner of Soakaway 510



**Plate 5:** South facing section of Feature 502



**Plate 6:** West facing section of Pit 506





**Plate 7:** Feature 508, looking east



**Plate 8:** Eastern terminus of Ditch 702



**Plate 9:** Stanchions in Plots 9-12



**Plate 10:** Ditch 1103 seen in section in Plots 9-12



**Plate 11:** Profile of Ditch 1103



**Plate 12:** Pit in NW corner of Plots 7&8 soakaway



**Plate 13:** Feature 1202 in drainage trench SE of Plots 1 & 2



**Plate 14:** Feature 1204 in drainage trench SE of Plots 1 & 2



**Plate 15:** Soakaway to the rear of Plots 7 & 8

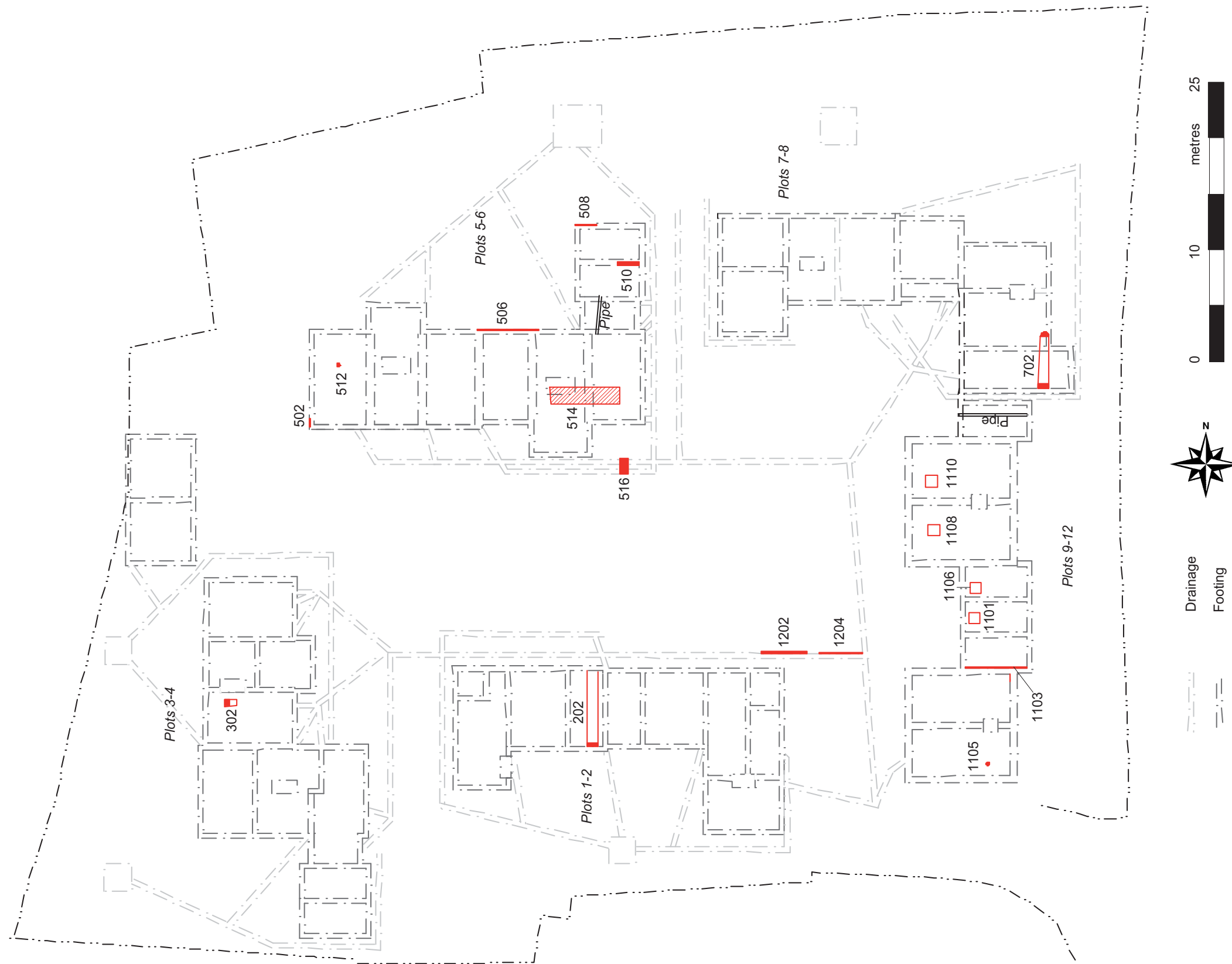
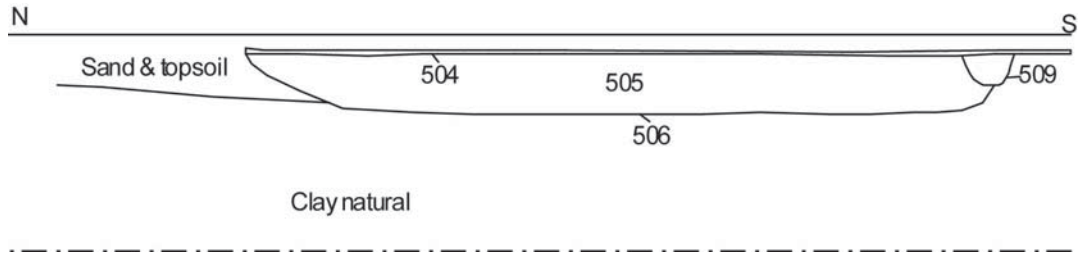
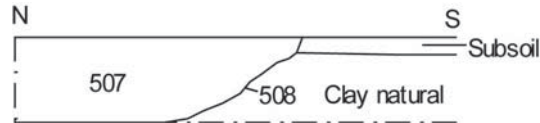


Figure 3: Layout of archaeological features (Scale 1:400)

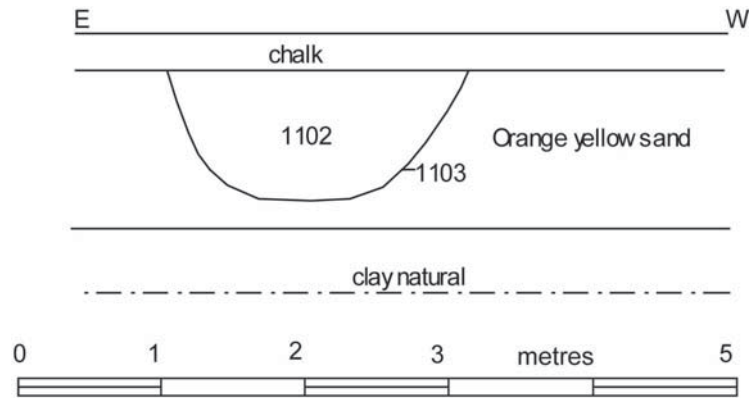




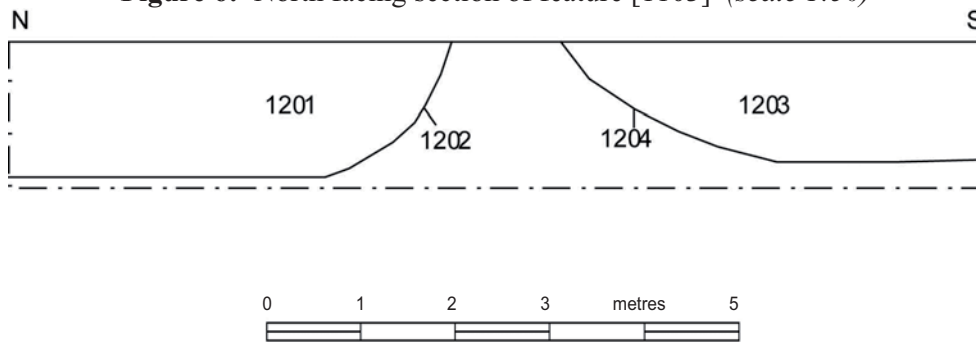
**Figure 4:** West facing section of feature [508] (scale 1:50)



**Figure 5:** West facing section of feature [508] (scale 1:50)



**Figure 6:** North facing section of feature [1103] (scale 1:50)



**Figure 7:** West facing section of features [1202] & [1204] (scale 1:75)

## **5. Conclusions**

- 5.1 In view of the peripheral location of the site in relation to the medieval core of the village and earlier archaeological remains, as well as the fact that it was a farmyard, the quantity and nature of the archaeological features revealed during this project are unsurprising. The modern remains, such as the stanchions and soakaways, as well as the redeposited chalk surfaces and contaminated areas are clearly the legacy of a working farm. Pit [508] at the eastern end of the site is likely to have been associated with the use of the site as the farm as it contained post-medieval material. Stratigraphically, pit [506] to the northwest of it appears to have been an earlier feature as it was overlain by a chalk surface. The lack of datable material, however, hinders any further attempts at a chronological narrative.
- 5.2 Of greater interest perhaps are features [1202] and [1204], which lay immediately southeast of Plots 1 and 2. These remain somewhat enigmatic, as their profiles as well as the paucity of finds would suggest that they were ditches. However, as neither were observed during ground reduction or excavation further to the east it can only be surmised that they were either short ditches that butted ditch [1103] or pits.
- 5.3 The medieval ditches revealed during the evaluation may well relate to ditch [1103], which was seen to extend northwards from the southwest corner of the site, and ditch [202], which ran east to west through Plots 1 and 2. The terminus of ditch [702], which ran east to west at the southern end of the site, may also have been of medieval date, although the usual caveats of assigning a date on the basis of a single pottery fragment must be taken into account. No further medieval or earlier remains were encountered, which would suggest that the site might have always been peripheral to domestic and/or ritual activity but within the agrarian regime by the later medieval period.
- 5.4 Despite some appalling weather at the beginning of the year, the conditions were generally more than acceptable for the identification of archaeological features and deposits. There are no circumstances which would lead to a confidence rating for the work that is less than High.



## **6. Acknowledgements**

The writer is grateful to Lindsay Winter of Chase Park Construction Ltd. for commissioning this project and to the construction team for their help and co-operation throughout the fieldwork. Thanks are also due to the architects, Eades Hotswani Partnership for providing the plans that have been used as the basis for Figure 3, and the Historic Environment department at Hertfordshire County Council for monitoring this project.

The fieldwork was undertaken by Nigel Wilson HND AIFA and Karin Semmelmann MA AIFA. The report was written by Karin Semmelmann and edited by Bob Zeevat BA MIFA.

## **7. Archive**

7.1 The project archive will comprise:

1. Brief
2. Project Design
3. Initial Report
4. Clients site plans
5. Site Monitoring Sheets
6. List of photographs
7. B/W prints & negatives
8. CDROM with copies of all digital files.

7.2 The archive will be deposited with North Herts. Museums.

## **8. References**

### ***Standards & Specifications***

ALGAO 2003 *Standards for Field Archaeology in the East of England*. East Anglian Archaeology Occasional Paper 14.

EH 1991 *The Management of Archaeological Projects*, 2<sup>nd</sup> edition. English Heritage (London).

IFA 2000a Institute of Field Archaeologists' *Code of Conduct*.

IFA 2000b Institute of Field Archaeologists' *Code of Approved Practice for the Regulation of Contractual Arrangements in Field Archaeology*.

IFA 2001 Institute of Field Archaeologists' *Standard & Guidance documents (Desk-Based Assessments, Watching Briefs, Evaluations, Excavations, Investigation and Recording of Standing Buildings, Finds)*.

Rouse, C. 2005 *Project Design for Archaeological Strip and Record at Elm Tree Farm, Pirton, Hertfordshire* (ASC)

Smith, J 2005 *Design Brief for Archaeological Monitoring and Recording at Elm Tree Farm, Pirton* Hertfordshire County Archaeology Office


### ***Secondary Sources***

Archaeological Solutions 2005 *Elm Tree Farm, Hambridge Way, Pirton, Hertfordshire*.

Soil Survey 1983 *1:250,000 Soil Map of England and Wales, and accompanying legend* (Harpenden).


Williams, A & Martin, G.H. 1992 *Domesday Book: a complete translation* Penguin (London)

# Appendix 1: Monitoring Sheets

 <b>A.S.C. LTD</b>		<b>ARCHAEOLOGICAL FIELD MONITORING RECORD</b>				
Project: <b>ELM TREE FARM</b>		Project No/Code: <b>747 / PET</b>		Sheet: <b>1 of 36</b>		
Date of visit:						
Client/Developer: <b>CHASE PARK</b>						
Contact:				Phone:		
Duration of Visit (inc. travel):		Start: <b>7.45</b>		Finish: <b>9.30</b>		
Completed by:						
<b>Development Type:</b>						
Footings	Services	Roads	Levelling	Quarrying	Pipelines	Other (specify):
Site & weather conditions:						
Observations:						
<b>NTW</b>						
Comments:						
<b>ABORTIVE VISIT INFORMED BY THE FARMER THAT THE SALE IS NOT COMPLETED</b>						

For sketch plan, use reverse

©ASC, 2003

 <b>A.S.C. LTD</b>		<b>ARCHAEOLOGICAL FIELD MONITORING RECORD</b>				
Project: <b>ELM TREE FARM</b> <b>PIRTON</b>		Project No/Code: <b>747 / PET</b>		Sheet: <b>2 of 36</b>		
Client/Developer: <b>CHASE MARK</b>		Date of visit:				
Contact: <b>STEPHEN DODSON</b>		Phone: <b>01462 712995</b>				
Duration of Visit (inc. travel):		Start: <b>2.00</b>		Finish: <b>3.00</b>		
Completed by: <b>N3W</b>						
<b>Development Type:</b>						
Footings <input checked="" type="checkbox"/>	Services	Roads	Levelling	Quarrying	Pipelines	Other (specify):
Site & weather conditions: <b>DRY, OVERCAST</b>						
Observations: <b>PLOTS &amp; OPEN NO ARCHAEOLOGY</b> <b>OLD FARM BUILDINGS RETROVED + c. 0.2m OF TOP RUBBISH</b> <b>0-200mm MODERN MAKEUP</b> <b>&gt; 200mm NATURAL CLAY</b>  <b>Ditch in plot 142: 0.95m W x 0.2m D [202] E-W</b> <b>Fill 201: Mid-brown silty clay with brick 1st flg</b>						
Comments: <b>WILL COME BACK WEDNESDAY TO INSPECT THE NEXT TWO PLOTS.</b>						

For sketch plan, use reverse

©ASC, 2003





**A.S.C. LTD**

**ARCHAEOLOGICAL FIELD MONITORING RECORD**

Project: <i>Elm Tree Farm Pirton</i>		Project No/Code: <i>7A7 1PET</i>	Sheet: <i>4 of 36</i>
		Date of visit: <i>13.03.06</i>	
Client/Developer <i>CHASE PARK</i>			
Contact: <i>Stephen Dodson</i>		Phone: <i>01462 712995</i>	
Duration of Visit (inc. travel):	Start: <i>8:00</i>	Finish: <i>12:45 + 1/4 hr travel</i>	
Completed by:			
<b>Development Type:</b>			
Footings	Services	Roads	Levelling <input checked="" type="checkbox"/>
			Quarrying
			Pipelines
			Other (specify):
Site & weather conditions: <i>v. cold + grey</i>			
Observations:			
<i>2 areas were reduced; plots 3-4 + 5-6 was completed.</i>			
<i>Plot 3-4: Rectangular feature [302]* containing post-med pot, clay pipe (frag), glass + CBM within dark greyish brown fill [302]. <sup>clay</sup> Ceramics material (90x69x22cm)</i>			
<i>Plots 5-6: soakaway in SW corner of reduced area filled with modern material (7x1.50m)</i>			
<i>A posthole 30cm Ø x 10cm D half sectioned in northern sector of area. Filled with grey clay. No finds. Prob. a telegraph pole hole - [352] clay fill: [311]</i>			
<i>Various soil types encountered including contaminated silty clays in soakaway area</i>			
Comments:			
<i>Drainage to be started tomorrow.</i>			
<i>* Was informed by farmer that this lay in the former garden and so could be a plant.</i>			

For sketch plan, use reverse

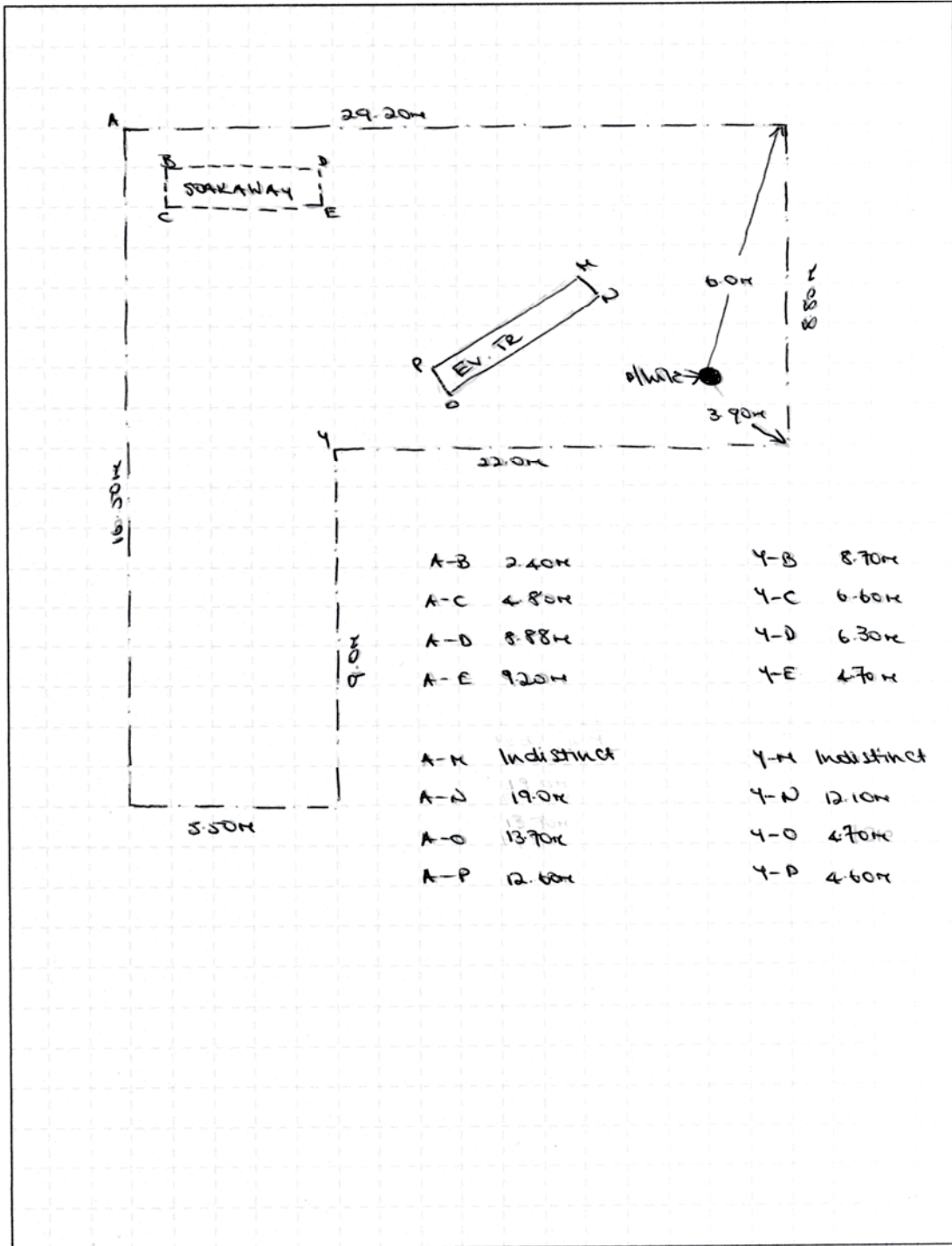
©ASC, 2003





**SKETCH SHEET**

Site Name: <u>Elm Tree Farm Pirton</u>	Site Code: <u>727/PET</u>	Orientation: 
Context: <u>P185 5-6</u>		

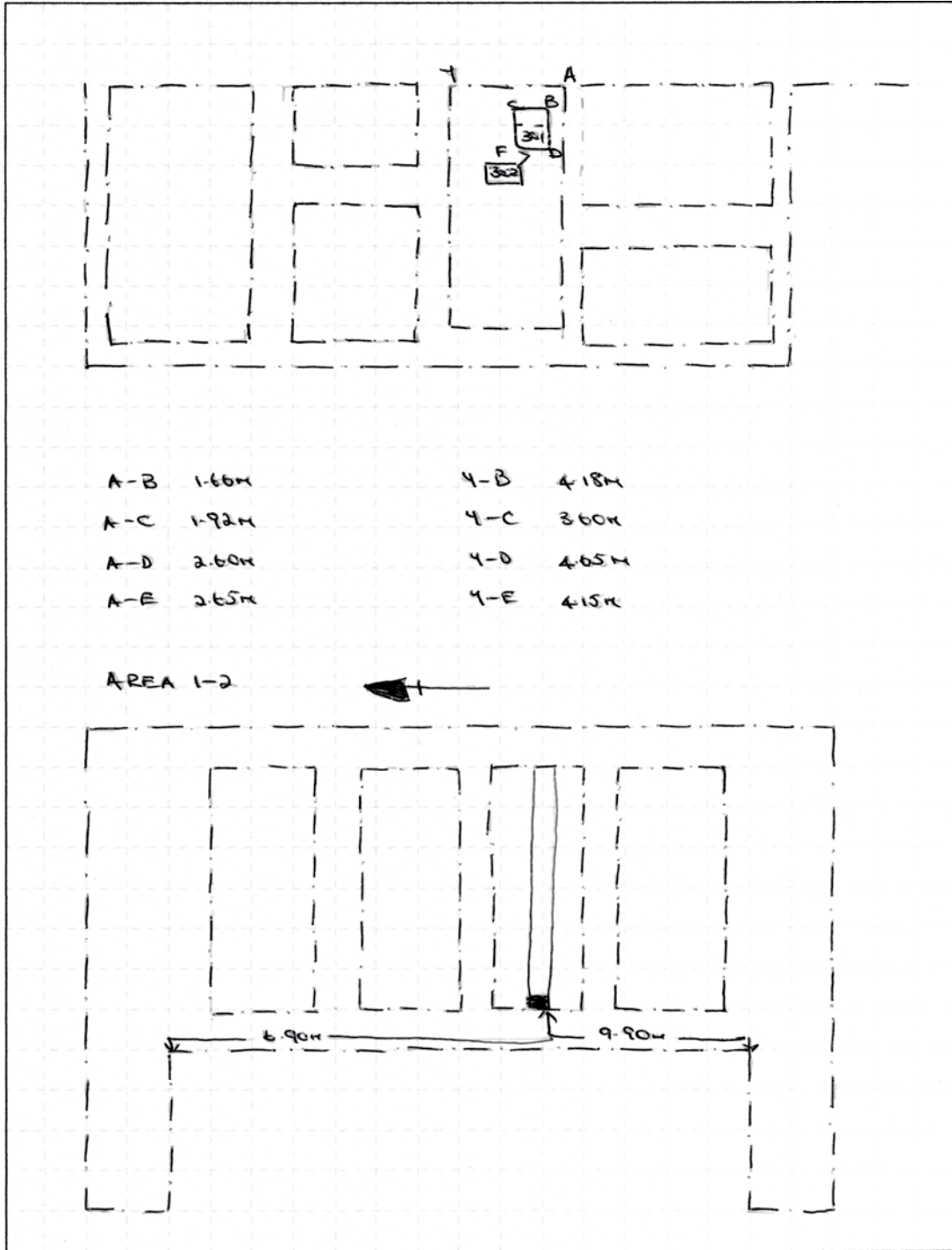


Recorded by: <u>RS</u>	Date: <u>13.03.06</u>	Digitised by:	Date:	Sheet number: <u>5</u> of <u>36</u>
------------------------	-----------------------	---------------	-------	-------------------------------------



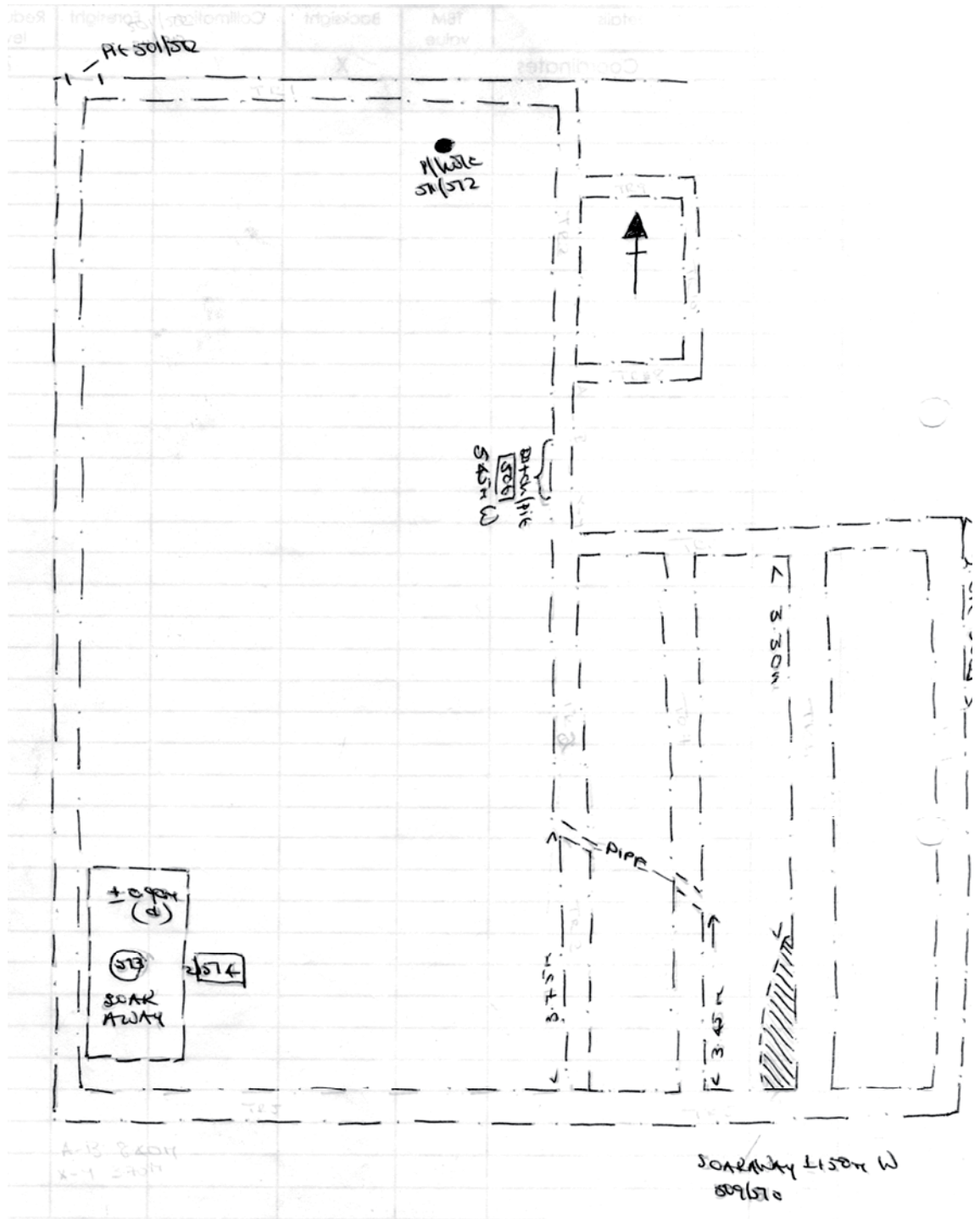
SKETCH SHEET

Site Name: <u>ELM TREE FARM PIRTON</u>	Site Code: <u>747/PET</u>	Orientation: ↓
Context: <u>747/PET AREA 3-4</u>		



Recorded by: <u>KS</u>	Date: <u>13.03.06</u>	Digitised by:	Date:	Sheet number: <u>6</u> of <u>36</u>
------------------------	-----------------------	---------------	-------	-------------------------------------







**A.S.C. LTD**

**ARCHAEOLOGICAL FIELD MONITORING RECORD**

Project: Elm Tree Farm Pirton		Project No/Code: 727 / RET	Sheet: 8 of 26
		Date of visit: 14-03-06	
Client/Developer Chase Park			
Contact: Stephen Dodson		Phone: 01462 712995	
Duration of Visit (inc. travel):	Start: 800	Finish: 430 + 1/2 hr travel	
Completed by: RS			
<b>Development Type:</b>			
Footings <input checked="" type="checkbox"/>	Services <input checked="" type="checkbox"/>	Roads	Levelling
		Quarrying	Pipelines
		Other (specify):	
Site & weather conditions: V. cold rain wind			
Observations: Some drainage trenches for plots 3+4 were dug to a depth of 0.55m (max). No features or finds observed.  The footing trenches for plots 5+6 were started. They were 0.45 x 1.50m. A <sup>2</sup> layer [502] pit was revealed c. 0.20m from N end of northern trench. It was 0.75 x 0.15m (h) & by 0.85 BGS. Dk grey fill with no apparent finds. [501]  The area within the blockwork of the garage to the N was revealed no features or finds observed.			
Comments: Footing trenches to be continued tomorrow. Have asked Steve for footings + drainage plans.			

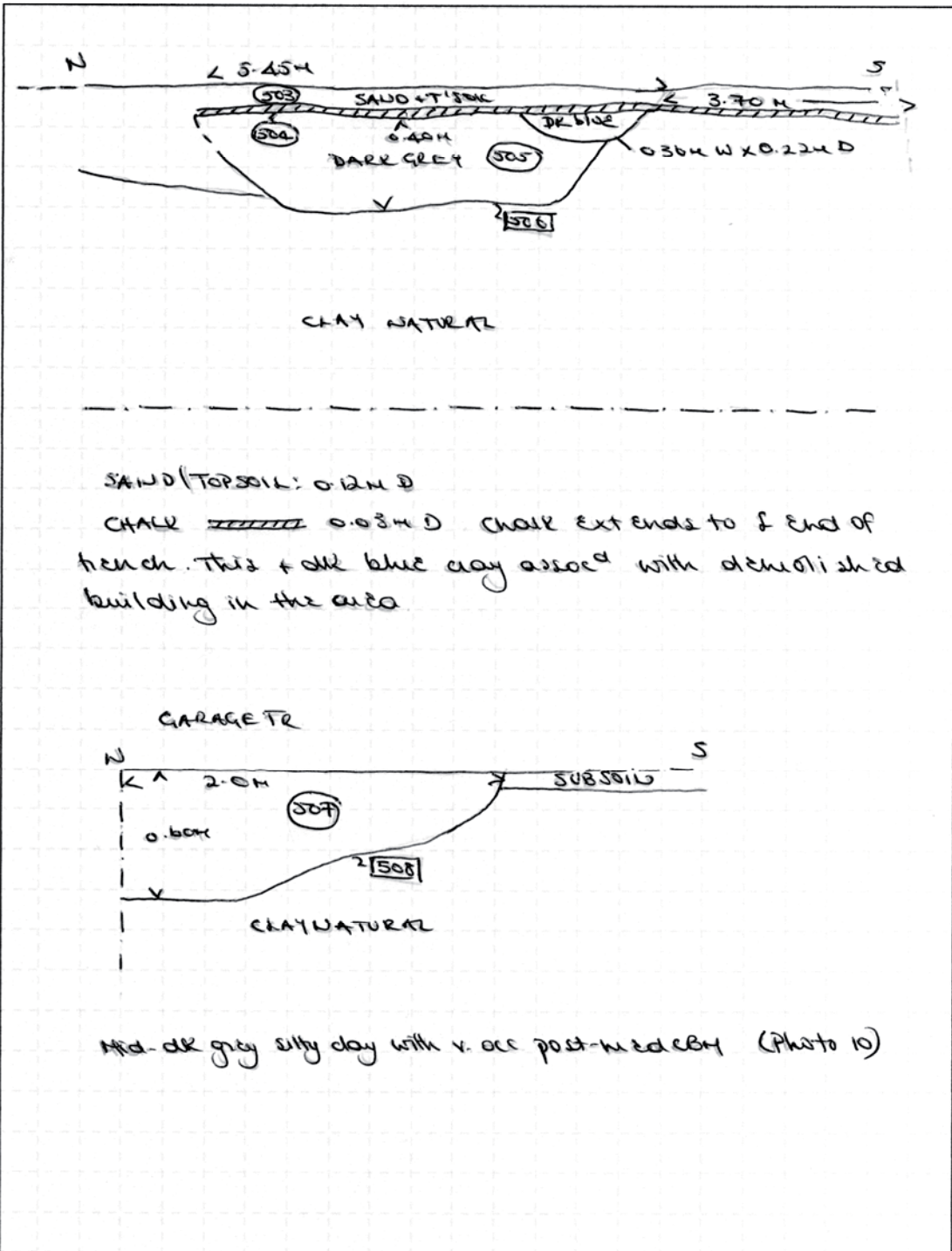
For sketch plan, use reverse

©ASC, 2003



SKETCH SHEET

Site Name: <u>ELM TREE FARM, PIRTON</u>	Site Code: <u>727/PET</u>	Orientation:
Context: <u>FEATURES</u>		<u>PLOTS 5-6 (PHOTO 10)</u>



Recorded by: <u>KS</u>	Date: <u>15-03-06</u>	Digitised by:	Date:	Sheet number: <u>9</u> of <u>36</u>
------------------------	-----------------------	---------------	-------	-------------------------------------




**A.S.C. LTD**

**ARCHAEOLOGICAL FIELD MONITORING RECORD**

Project: Elm Tree Farm Pirton		Project No/Code: 727 / P.E.T		Sheet: 10 of 36		
		Date of visit: 15.03.06				
Client/Developer Chase Park						
Contact: Stephen Dodson			Phone: 01462 712995			
Duration of Visit (inc. travel):		Start: 8:00 3:30		Finish: 11:30 + 1 1/2 hours 4:30		
Completed by: KJ						
<b>Development Type:</b>						
Footings <input checked="" type="checkbox"/>	Services	Roads	Levelling	Quarrying	Pipelines	Other (specify):
<b>Site &amp; weather conditions:</b> Sunny						
<b>Observations:</b>						
Pit [506] 5.45m W x 2.40m D sealed by chalk layer [304] was revealed in the WFS of T2. This lay in the area that had seen some demolition. A contaminated area 0.36m W x 0.22m D was located in the southern end of [506]						
Pit [508] 2.0m W x 0.60m D was revealed in northern end of WFS of T2. Filled by mid-dr grey silty clay [507] with very occ. post-med cbst.						
A modern soakaway [510] was found at the junction of T2s 5+6. Contains flattons etc [509]. Pipes leading to soakaway still present.						
Re-checked Plot 3-4: AS's ditch feature visible in the section: c. 0.40m d and adjacent (very!) but couldn't measure.						
<b>Comments:</b>						
Called to office and so left them to machine and inspected benches later in the day						

For sketch plan, use reverse

©ASC, 2003

 <b>A.S.C. LTD</b>		<b>ARCHAEOLOGICAL FIELD MONITORING RECORD</b>				
Project: Elm Tree Farm, Pirton		Project No/Code: 777 / PET		Sheet: 11 of 36		
		Date of visit: 16.03.06				
Client/Developer: Chase Park						
Contact: Stephen Dodson			Phone: 01462 712995			
Duration of Visit (inc. travel):		Start: 800		Finish: 430 + 1/2 hr travel		
Completed by: VJ						
<b>Development Type:</b>						
Footings <input checked="" type="checkbox"/>	Services	Roads	Levelling	Quarrying	Pipelines	Other (specify):
Site & weather conditions: Very cold, grey with some snow						
Observations: Spade away [572] was detected, showing that it was c.0.95m deep.						
Comments: The final trenches for pits 5+6 were excavated. Next visit required will be on Monday when further ground reduction will take place.						

For sketch plan, use reverse

©ASC, 2003






**A.S.C. LTD**

**ARCHAEOLOGICAL FIELD MONITORING RECORD**

Project: Elm Tree Farm Pirton		Project No/Code: 727 / PET		Sheet: 12 of 36	
		Date of visit: 20.03.06			
Client/Developer					
Contact:			Phone:		
Duration of Visit (inc. travel):		Start: 7.15		Finish: 10.30	
Completed by: RS					
<b>Development Type:</b>					
Footings	Services ✓	Roads	Levelling ✓	Quarrying	Pipelines
Other (specify):					
<b>Site &amp; weather conditions:</b> Grey + wind					
<b>Observations:</b>					
Soakaway at N boundary: 2.50m <sup>2</sup> x 1.40m deep					
30cm subsoil over clay natural. No features or finds					
Drainage trenches to soakaway up to 40cm deep					
Didn't hit natural. No features or finds					
Leveling of 100m <sup>2</sup> Plot 5+6. No further features revealed.					
<b>Comments:</b>					
In this revision for plots 7+8 to take place this week. Will be given 28 hrs notice					

For sketch plan, use reverse

©ASC, 2003

 <b>A.S.C. LTD</b>		<b>ARCHAEOLOGICAL FIELD MONITORING RECORD</b>				
Project: <i>Elm Tree Farm Pirton</i>		Project No/Code: <i>747 / PET</i>		Sheet: <i>13 of 36</i>		
		Date of visit: <i>22.03.06</i>				
Client/Developer: <i>CHASE RAIL</i>						
Contact:			Phone:			
Duration of Visit (inc. travel):		Start: <i>12:30</i>		Finish: <i>3:30</i>		
Completed by: <i>RS</i>						
<b>Development Type:</b>						
Footings	Services	Roads	Levelling	Quarrying	Pipelines	Other (specify):
Site & weather conditions:						
Observations:						
Comments:						
<i>Called out to monitor ground reduction which didn't take place in the end. Due to start tomorrow morning at 8:00.</i>						

For sketch plan, use reverse

©ASC, 2003



**A.S.C. LTD**

**ARCHAEOLOGICAL FIELD MONITORING RECORD**

Project: Elm Tree Farm, Pirton		Project No/Code: T27 / PET		Sheet: 4 of 36	
		Date of visit: 23.03.06			
Client/Developer					
Contact:			Phone:		
Duration of Visit (inc. travel):		Start: 7 <sup>15</sup>		Finish: 4 <sup>45</sup>	
Completed by: RS					
<b>Development Type:</b>					
Footings <input checked="" type="checkbox"/>	Services	Roads	Levelling	Quarrying	Pipelines
Other (specify):					
Site & weather conditions: Sunny					
Observations:  Stratigraphy changed in Plots 7-8 to include a layer of sand (c.0.80m deep) above the natural. Above that was a thin layer of subsoil covered by very mixed, loose overburden of b'd debris with frag. glass bottles + pottery frags (all modern).  Seawall to Plots 4-2: 1.80m <sup>2</sup>					
Comments: Footings for Plots 7+8 to be completed tomorrow. Stephen informed that no visits are needed before Wed of next week (after tomorrow). Provisional Timetable: Wed + Thurs on site.					

For sketch plan, use reverse

©ASC, 2003





**A.S.C. LTD**

**ARCHAEOLOGICAL FIELD MONITORING RECORD**

Project: <i>Elm Tree Farm, Pirton</i>		Project No/Code: <i>747 / RES</i>	Sheet: <i>15 of 36</i>
		Date of visit: <i>24-03-06</i>	
Client/Developer			
Contact:		Phone:	
Duration of Visit (inc. travel):	Start: <i>7.15</i>	Finish: <i>4.00</i>	
Completed by: <i>[Signature]</i>			
<b>Development Type:</b>			
Footings <input checked="" type="checkbox"/>	Services	Roads	Levelling
			Quarrying
			Pipelines
			Other (specify):
<b>Site &amp; weather conditions:</b> <i>Overcast + some rain</i>			
<b>Observations:</b> <i>No archaeological features or finds observed</i>			
<b>Comments:</b> <i>Almost completed plots 7 + 8 - Return on Monday 8.00 to complete</i>			

For sketch plan, use reverse

©ASC, 2003





**A.S.C. LTD**

**ARCHAEOLOGICAL FIELD MONITORING RECORD**

Project: Elm Tree Farm, Pirton		Project No/Code: 747 / PET		Sheet: 17 of 36		
		Date of visit: 28.03.06				
Client/Developer						
Contact:			Phone:			
Duration of Visit (inc. travel):		Start: 7 <sup>15</sup>		Finish: 8 <sup>45</sup>		
Completed by: KJ						
<b>Development Type:</b>						
Footings <input checked="" type="checkbox"/>	Services <input checked="" type="checkbox"/>	Roads	Levelling	Quarrying	Pipelines	Other (specify):
<b>Site &amp; weather conditions:</b> Dry & sunny						
<b>Observations:</b> No archaeological features or finds observed. Drainage: W of Plot 2 5+6 0.50 W x 0.80 M D Footings: Final one in Plot 2 5+6						
<b>Comments:</b> Drainage trenches Plot 2 5+6 to be inspected tomorrow nothing						

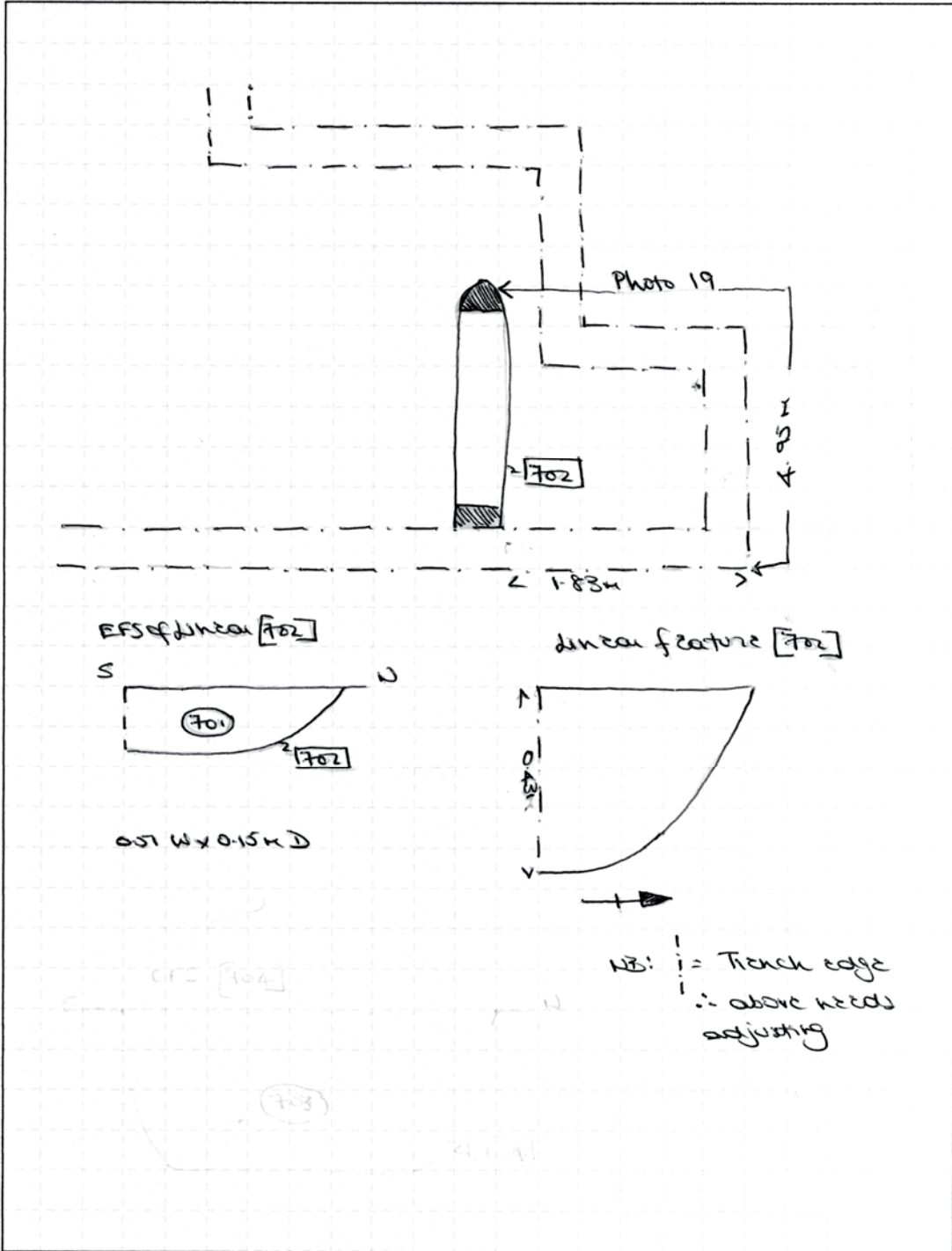
For sketch plan, use reverse

©ASC, 2003



SKETCH SHEET

Site Name: <u>Elm Tree Farm Pirton</u>	Site Code: <u>727/PET</u>	Orientation:
Context: <u>plots 718 - linear [702]</u>		



Recorded by: <u>KS</u>	Date: <u>29.03.06</u>	Digitised by:	Date:	Sheet number: <u>18</u> of <u>36</u>
------------------------	-----------------------	---------------	-------	--------------------------------------



**A.S.C. LTD**

**ARCHAEOLOGICAL FIELD MONITORING RECORD**

Project: <i>Elm Tree Farm, Pirton</i>		Project No/Code: <i>747 / PET</i>	Sheet: <i>19 of 36</i>
		Date of visit: <i>29.03.06</i>	
Client/Developer <i>Chase Park</i>			
Contact: <i>Stephen</i>		Phone:	
Duration of Visit (inc. travel):	Start: <i>715</i>	Finish: <i>1245</i>	
Completed by: <i>RS</i>			
<b>Development Type:</b>			
Footings	Services <input checked="" type="checkbox"/>	Roads	Levelling <input checked="" type="checkbox"/>
		Quarrying	Pipelines
		Other (specify):	
<b>Site &amp; weather conditions:</b> <i>Mixed: generally overcast with some sun + some showers</i>			
<b>Observations:</b> <i>The ponds in plots 7+8 were raised revealing an E-W linear feature 0.90m W x 0.40m deep. It was filled with mid greyish brown silty clay with few stones. 1 pit sherd (prob intrusive) + 1 animal bone recovered. Steep sides + flat base. Drainage trench W of plot 5+6: linear feature 0.80m W x 0.40m deep revealed 2.45m from SW corner of plot. Probable continuation of ditch revealed in plot 1+2.</i>			
<b>Comments:</b> <i>Plots 8-12 to be started on late today or tomorrow! Jan to inform</i>			

For sketch plan, use reverse

©ASC, 2003



**A.S.C. LTD**

**ARCHAEOLOGICAL FIELD MONITORING RECORD**

Project: Elm Tree Farm Pirton		Project No/Code: 727 / PRT		Sheet: 20 of 36	
		Date of visit: 30.03.06			
Client/Developer					
Contact:			Phone:		
Duration of Visit (inc. travel):	Start: 7.15			Finish: 3.30	
Completed by: RS					
<b>Development Type:</b>					
Footings <input checked="" type="checkbox"/>	Services	Roads	Levelling	Quarrying	Pipelines
Other (specify):					
<b>Site &amp; weather conditions:</b> Windy					
<b>Observations:</b> ? Ditch noted in drainage trench to south of plots 3rd - probable extension of one excavated by AJ in 2002. PTD  Some of footings for Plots 8-12 were excavated. No features or finds were observed. The northern trench had a 15-20cm layer of re-deposited chalk over the subsoil. This apparently lay within the beam that had stood here.					
<b>Comments:</b> Return for tomorrow					

For sketch plan, use reverse

©ASC, 2003







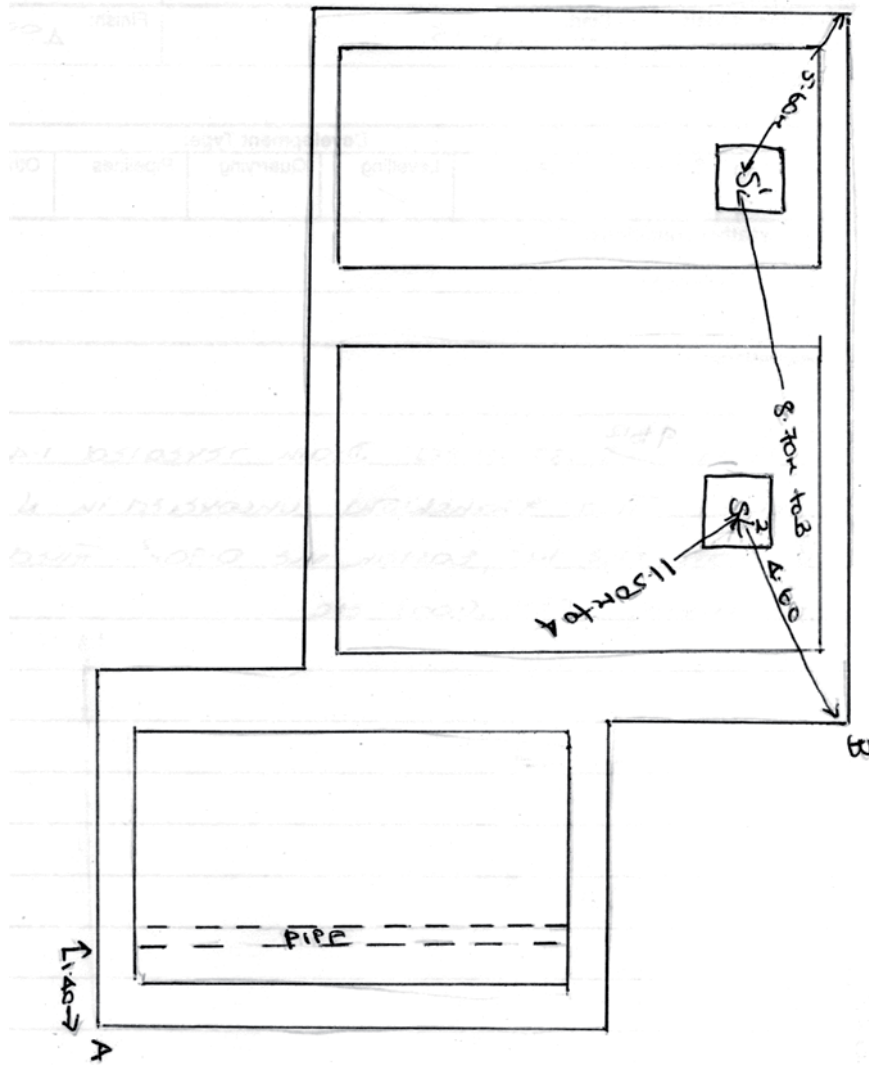
**A.S.C. LTD**

**ARCHAEOLOGICAL FIELD MONITORING RECORD**

Project: <i>Elm Tree Farm Pirton</i>		Project No/Code: <i>727 / PET</i>	Sheet: <i>22 of 36</i>
		Date of visit: <i>04.04.06</i>	
Client/Developer			
Contact:		Phone:	
Duration of Visit (inc. travel):	Start: <i>12.45</i>	Finish: <i>4.00</i>	
Completed by:			
Development Type:			
Footings	Services	Roads	Levelling <input checked="" type="checkbox"/>
			Quarrying
			Pipelines
			Other (specify):
Site & weather conditions: <i>Sunny</i>			
Observations: <i>Plots <del>5+6</del> <sup>9+12</sup> stripped. Drain revealed 1.40m from E edge. Two stanchions uncovered in N part of area; western one 1m<sup>2</sup>, eastern one 0.90m<sup>2</sup>. Filled with chalk containing CBM frogs etc</i>			
Comments: <i>To return tomorrow to monitor inspect soakaway for plots 5+6 + assoc<sup>d</sup> drainage</i>			

For sketch plan, use reverse

©ASC, 2003



1)  
S1: 1.04m<sup>2</sup>  
S2: 0.90m<sup>2</sup>



**A.S.C. LTD**

**ARCHAEOLOGICAL FIELD MONITORING RECORD**

Project: Elm Tree Farm Pirton		Project No/Code: 747 / PET		Sheet: 23 of 36		
		Date of visit: 05.04.06				
Client/Developer:						
Contact:			Phone:			
Duration of Visit (inc. travel):		Start: 7.15		Finish: 9.00		
Completed by: RS						
<b>Development Type:</b>						
Footings	Services	Roads	Levelling	Quarrying	Pipelines	Other (specify):
Site & weather conditions: Sunny						
Observations: Inspected drainage trench to W of Plot 5+6 Seweraway that was supposed to have been dug not happening until Friday  No features or finds						
Comments: Return on Friday for drainage + Monday for footings						

For sketch plan, use reverse

©ASC, 2003



A.S.C. LTD

ARCHAEOLOGICAL FIELD MONITORING RECORD

Project: Elm Tree Farm Pirton		Project No/Code: 747 1PET	Sheet: 24 of 30
Client/Developer		Date of visit: 07.04.06	
Contact:		Phone:	
Duration of Visit (inc. travel):	Start: 7 <sup>15</sup>	Finish: 10 <sup>30</sup>	
Completed by: RL			
<b>Development Type:</b>			
Footings	Services ✓	Roads	Levelling
			Quarrying
			Pipelines
			Other (specify):
Site & weather conditions: Dry & Sunny			
Observations: Soakaway to rear of Plot 5th dug to depth of 2.7m. Max 2m cells put in NW corner (4.50 x 4.0m) Start: 0.50m topsoil Nat: clay			
Comments: Drainage ditch to be dug between Plot 6 phone when starting			

For sketch plan, use reverse

©ASC, 2003



**A.S.C. LTD**

**ARCHAEOLOGICAL FIELD MONITORING RECORD**

Project: <i>Elm Tree Farm Pirton</i>		Project No/Code: <i>727 / PET</i>	Sheet: <i>25 of 36</i>
		Date of visit: <i>08.04.06</i>	
Client/Developer			
Contact:		Phone:	
Duration of Visit (inc. travel):	Start: <i>900</i>	Finish: <i>100</i>	
Completed by: <i>RE</i>			
<b>Development Type:</b>			
Footings	Services <input checked="" type="checkbox"/>	Roads	Levelling
			Quarrying
			Pipelines
			Other (specify):
Site & weather conditions: <i>Dry + sunny</i>			
Observations:  <i>Monitored two drainage trenches to 3 of plots 5+6 Second one not completed due to lack of time &amp; will be finished on Monday.  0.45m wide x 1.0m deep. No archaeology observed</i>			
Comments:  <i>Return Monday 8.50</i>			

For sketch plan, use reverse

©ASC, 2003





**A.S.C. LTD**

**ARCHAEOLOGICAL FIELD MONITORING RECORD**

Project: <i>Elm Tree Farm Pirton</i>		Project No/Code: <i>747 / PET</i>	Sheet: <i>26 of 36</i>
		Date of visit: <i>10.04.06</i>	
Client/Developer			
Contact:		Phone:	
Duration of Visit (inc. travel):	Start: <i>9.15</i>	Finish: <i>12.45</i>	
Completed by: <i>RS</i>			
<b>Development Type:</b>			
Footings	Services <input checked="" type="checkbox"/>	Roads	Levelling
			Quarrying
			Pipelines
			Other (specify):
<b>Site &amp; weather conditions:</b> <i>Sunny + dry</i>			
<b>Observations:</b> <i>The final stretch of the drainage trench to the south of Plot 5+6 was completed. No features or finds were observed.</i>			
<b>Comments:</b> <i>RS to be informed when the next visit is required</i>			

For sketch plan, use reverse

©ASC, 2003



A.S.C. LTD

ARCHAEOLOGICAL FIELD MONITORING RECORD

Project: Elm Tree Farm Pirton		Project No/Code: 747 / PET		Sheet: 27 of 36		
Date of visit: 20.04.06						
Client/Developer Chase Park						
Contact: Stephen			Phone:			
Duration of Visit (inc. travel):		Start: 1230		Finish: 1445		
Completed by: ES						
Development Type:						
Footings <input checked="" type="checkbox"/>	Services	Roads	Levelling	Quarrying	Pipelines	Other (specify):
Site & weather conditions: overcast						
Observations: Footings for plots 11 + 12 Toss feature [1103] 9.0m from SW corner 1.80m W x 0.90m D Mid width fill - no obvious finds (sketch on plan) also present Visible mainly in WPS of trench after trench junction on ECJ						
Comments: Trenches to be completed tomorrow						

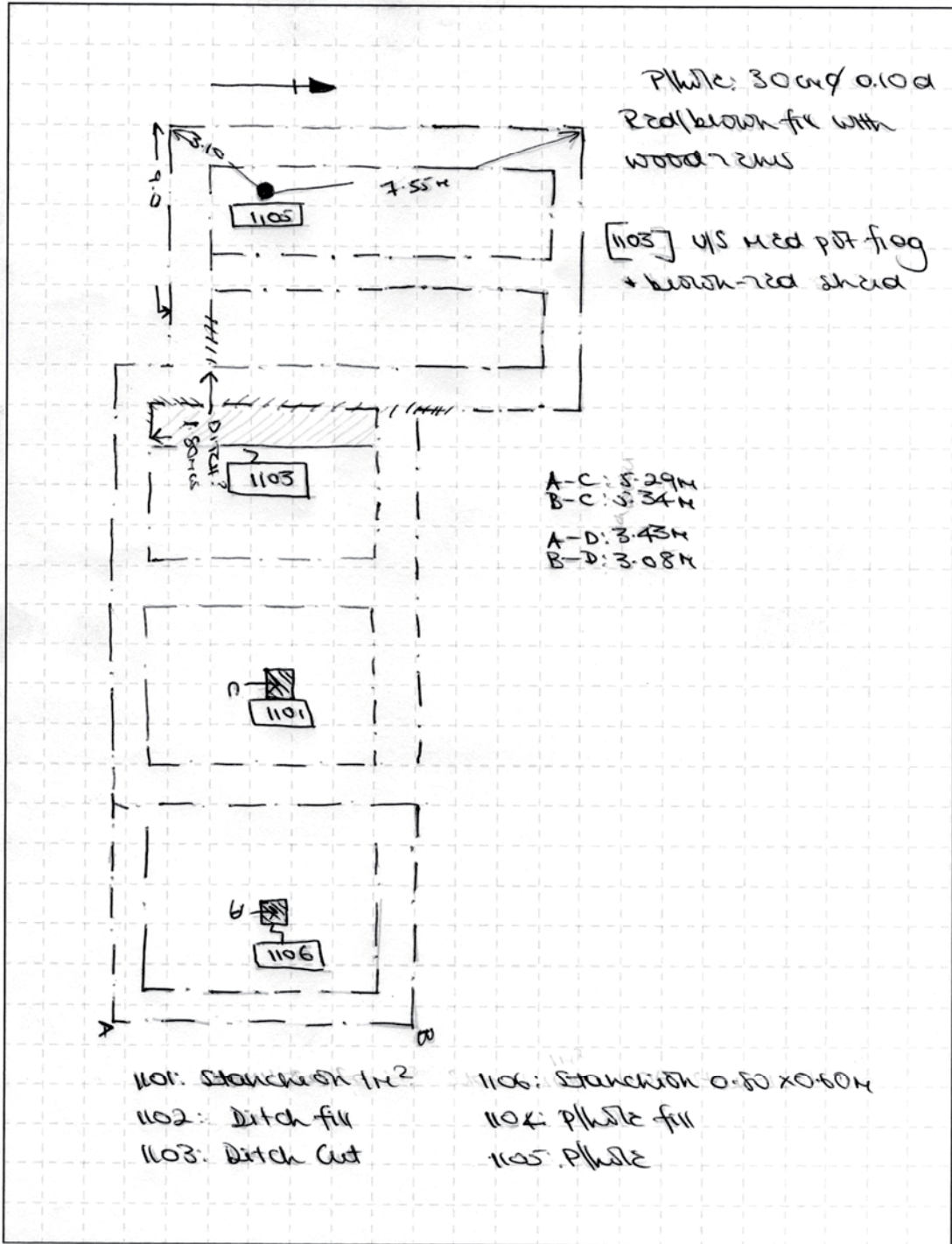
For sketch plan, use reverse

©ASC, 2003

**A.S.C. LTD**


**SKETCH SHEET**

Site Name: <i>Elm Tree Farm</i>	Site Code: <i>7471PET</i>	Orientation:
Context: <i>P1092 11+12</i>		



**RECORDING NOTES**

Recorded by: <i>RS</i>	Date: <i>20+24+04</i>	Digitised by:	Date:	Sheet number: <i>28</i> of <i>36</i>
------------------------	-----------------------	---------------	-------	--------------------------------------

 <b>A.S.C. LTD</b>		<b>ARCHAEOLOGICAL FIELD MONITORING RECORD</b>				
Project: Elm Tree Farm Pirton		Project No/Code: 727 /PET		Sheet: 29 of 36		
		Date of visit: 21.04.06				
Client/Developer						
Contact:			Phone:			
Duration of Visit (inc. travel):		Start: 7.15		Finish: 8.30 (on to Bovingdon)		
Completed by: RS						
Development Type:						
Footings <input checked="" type="checkbox"/>	Services	Roads	Levelling	Quarrying	Pipelines	Other (specify):
Site & weather conditions: Overcast						
Observations:						
Trenched (footings) for plots 11+12;						
Chalk floor continued into these plots to NW corner *						
Tarmac surface in SW corner						
Spot in SW: Tarmac etc (c.20cm) over orange-yellow sand (c.70cm) over clay natural. Small step of mid-greyish brown silt/clay apparent between tarmac						
+ sand further north						
* Chalk floor: 30cm deep.						
Comments:						

For sketch plan, use reverse

©ASC, 2003





**A.S.C. LTD**

**ARCHAEOLOGICAL FIELD MONITORING RECORD**

Project: Elm Tree Farm Pirton		Project No/Code: 727 / PET		Sheet: 30 of 36		
				Date of visit: 24.04.06		
Client/Developer Chase Park						
Contact: Stephen			Phone: 01462 712995			
Duration of Visit (inc. travel):		Start: 800		Finish: 200		
Completed by: RS						
<b>Development Type:</b>						
Footings <input checked="" type="checkbox"/>	Services <input checked="" type="checkbox"/>	Roads	Levelling	Quarrying	Pipelines	Other (specify):
Site & weather conditions: Overcast						
Observations: Pit 11+12 was reduced revealing a wooden posthole (30cm dia x 10cm D) in the SW corner. contained some decaying wood within fill (1104). flat base, steep sides.  Ditch [1103] was exposed - no datable finds in the mid-section silty fill [1102]. 2 x 4.5 postholes found on surface.  2 x stoneholes ([1101] = 1m <sup>2</sup> ; [1105] = 80x60cm) in SW end of pit. containing wood, brick, chalk etc						
Comments: Drainage trench to be dug tomorrow						


For sketch plan, use reverse

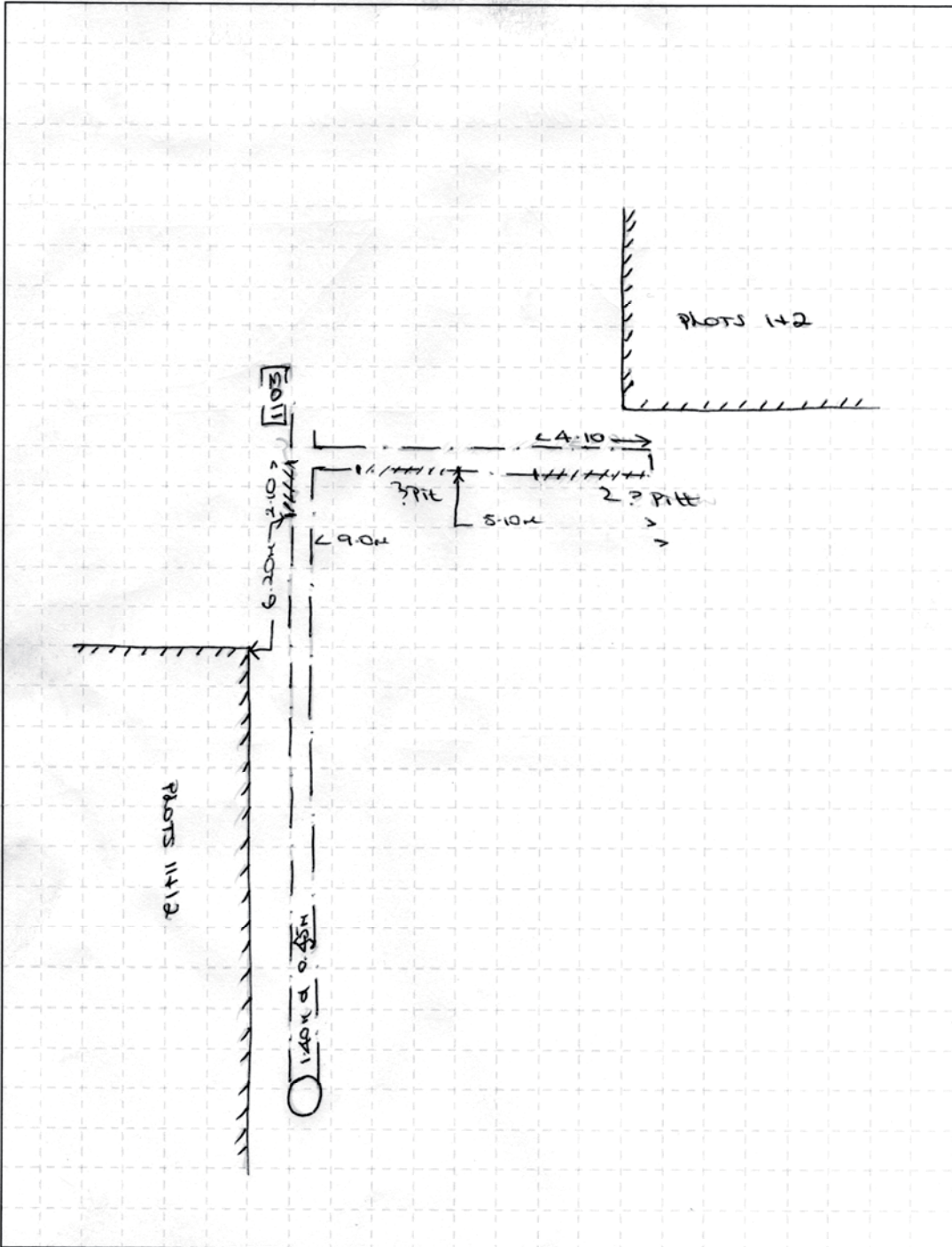
©ASC, 2003



 A.S.C. LTD

SKETCH SHEET

Site Name: <u>Elm Tree Farm Pirton</u>	Site Code: <u>747/PET</u>	Orientation: 
Context: <u>Drainage bet plots 1+2 &amp; 11+12</u>		



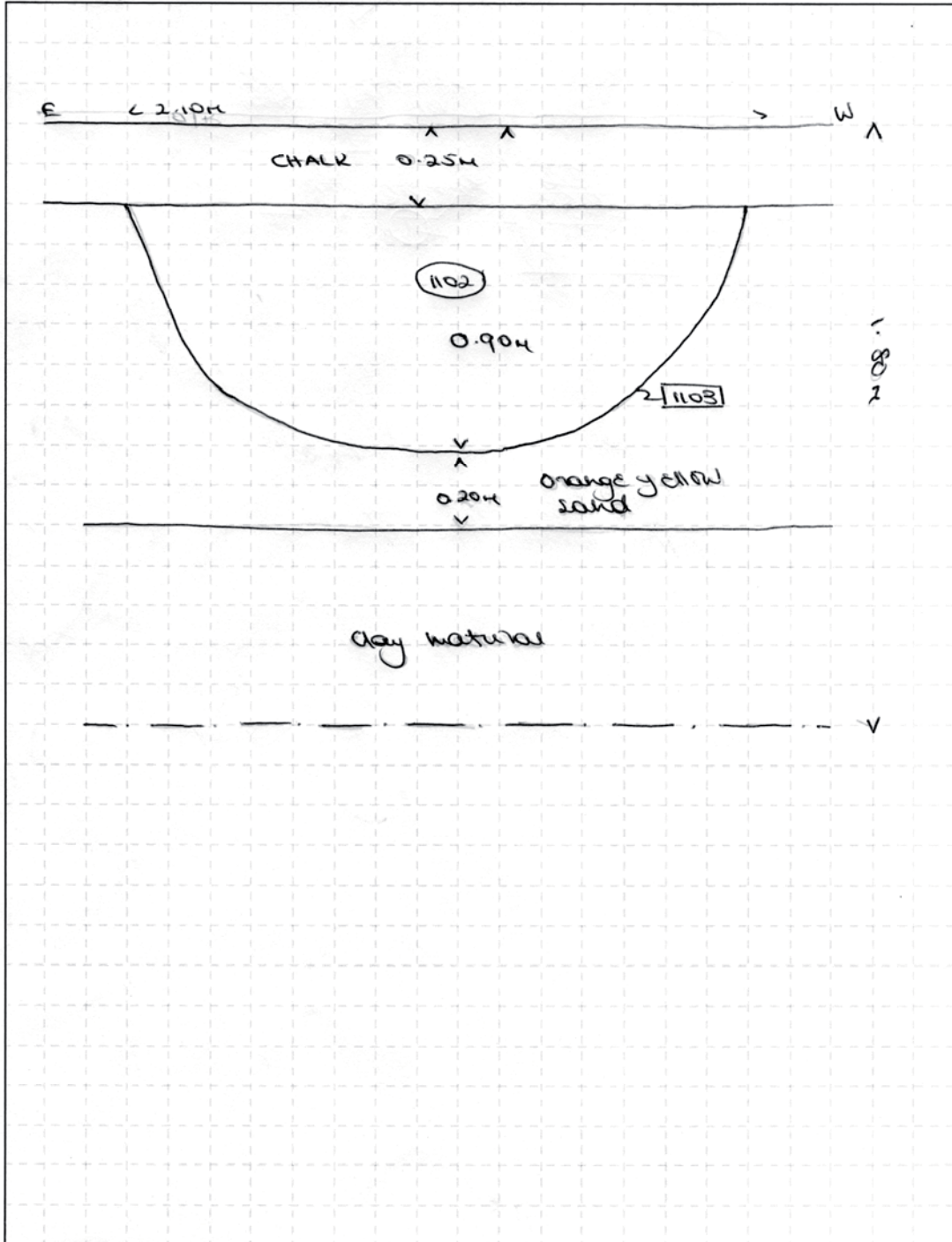
RECORDING NOTES

Recorded by: <u>RJ</u>	Date: <u>25.04.06</u>	Digitised by:	Date:	Sheet number: <u>31</u> of <u>36</u>
------------------------	-----------------------	---------------	-------	--------------------------------------



SKETCH SHEET

Site Name: Elm Tree Farm	Site Code: 747/PET	Orientation:
Context: drainage trench <sup>NFJ</sup> between plots 1+2 & 1+10		



**RECORDING NOTES**

Recorded by: RS	Date: 25-04-06	Digitised by:	Date:	Sheet number: 32 of 36
-----------------	----------------	---------------	-------	------------------------

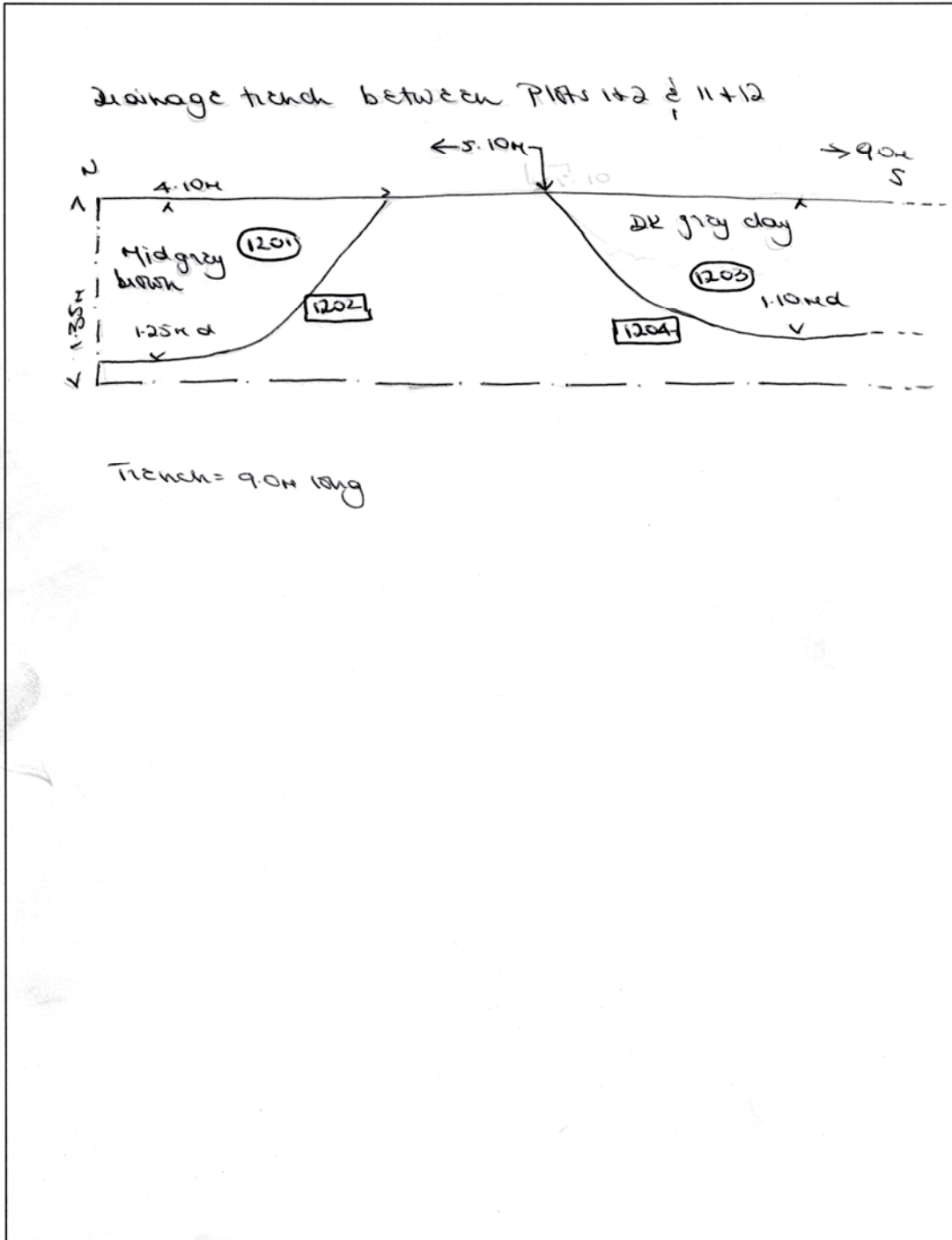


A.S.C. LTD

CONTINUATION SHEET

Site Code: <u>ELM TREE FARM PIRTON</u>	Co-ordinates: <u>727/PET</u>	Continued from Sheet Number: <u>SHEET N<sup>o</sup> 33 of 36</u>
Sheet Type: <u>Drainage trench sketch (N-S with WFS)</u>		

ADDITIONAL INFORMATION:



RECORDING NOTES

Recorded by: <u>RS</u>	Date: <u>25.04.06</u>	Checked by:	Date:	Entered by:	Date:
------------------------	-----------------------	-------------	-------	-------------	-------



**A.S.C. LTD**

**ARCHAEOLOGICAL FIELD MONITORING RECORD**


Project: Elm Tree Farm, Pirton		Project No/Code: 727 / PET	Sheet: 34 of 36
		Date of visit: 25.04.06	
Client/Developer Chase Park			
Contact: Stephen		Phone: 01462 712995	
Duration of Visit (inc. travel):	Start: 7.15	Finish: 3.45	
Completed by:			
<b>Development Type:</b>			
Footings	Services <input checked="" type="checkbox"/>	Roads	Levelling
			Quarrying
			Pipelines
			Other (specify):
Site & weather conditions: Shower.			
Observations: Drainage trenches between plots 1+2 & 11+12: Two possible pits in N-S row. Northernmost - 24.10m x 1.25m d. Mid grey brown fill. Southernmost: 2m from SE corner of plot 1 1.10m deep Grey clay fill - only datable find = post-med coin  Ditch 1103 clearly visible in DFS of E-W trench. Filled by 0.25m deep layer of chalk. Appears to extend full length of EFS of this drainage trench - but WFS appears to contain 2 pits!			
Comments:			

For sketch plan, use reverse

©ASC, 2003

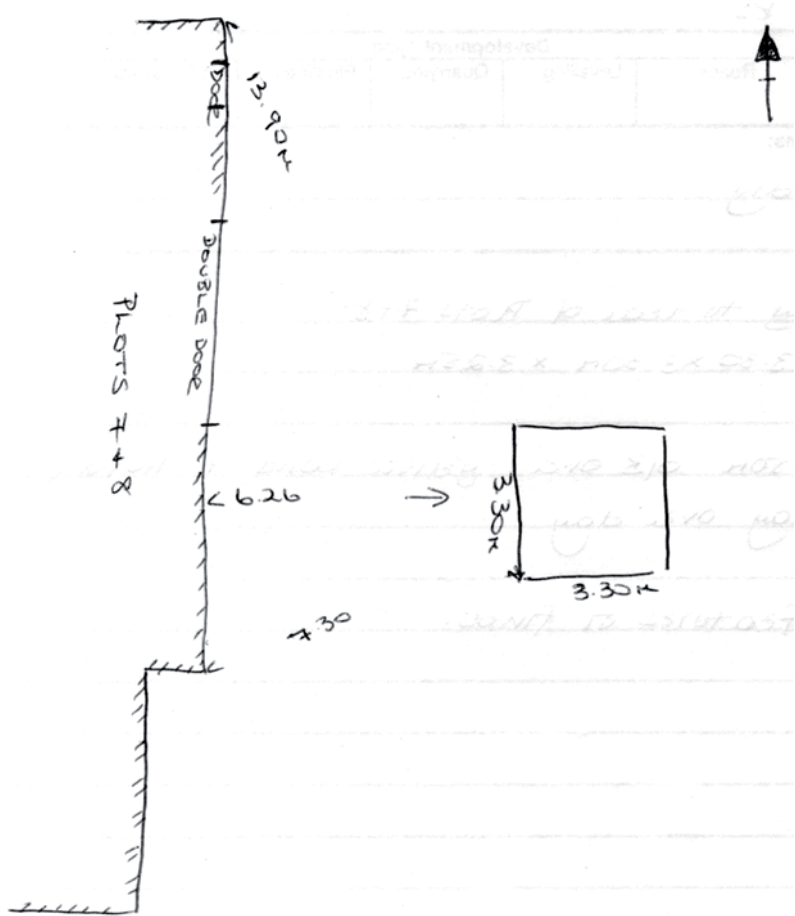




 <b>A.S.C. LTD</b>		<b>ARCHAEOLOGICAL FIELD MONITORING RECORD</b>				
Project: <i>Elm Tree Farm, Pirton</i>		Project No/Code: <i>727 / PET</i>		Sheet: <i>26 of 36</i>		
		Date of visit: <i>16.09.06</i>				
Client/Developer <i>Chase Paul</i>						
Contact:			Phone:			
Duration of Visit (inc. travel):		Start: <i>700</i>		Finish: <i>1000</i>		
Completed by: <i>PS</i>						
<b>Development Type:</b>						
Footings	Services <input checked="" type="checkbox"/>	Roads	Levelling	Quarrying	Pipelines	Other (specify):
<b>Site &amp; weather conditions:</b> <i>Overcast + dry</i>						
<b>Observations:</b> <i>Lookaway to rear of Plot 7+8:</i> <i>3.30 x 3.30M x 3.25M</i>  <i>Start: 0.50M O/B over yellow sand + light (buff / white) clay over clay</i>  <i>No such features or finds.</i>						
<b>Comments:</b>  <i>Final piece of groundwork</i>						

For sketch plan, use reverse

©ASC, 2003



## Appendix 2: List of Photographs

SITE NAME: Elm Tree Farm, Pirton, Herts.				SITE NO/CODE: 747/PET
Shot	B&W	Slide	Digital	Subject
1	x		x	Farm buildings from the south
2	x		x	Footings excavation of Plots 1 & 2
3	x		x	Northern trench, Plots 1 & 2
4	x		x	Footings trench Plots 1 & 2 looking SE
5	x		x	Footings trenches Plots 1 & 2 looking NE
6	x		x	Eastern footings trench of Plots 1 & 2 looking N
7	x		x	Soakaway in Plots 5 & 6 looking W
8	x		x	Ground reduction Plots 5 & 6 looking N
9	x		x	Ground reduction Plots 5 & 6 looking NE
10	x		x	Feature 302 looking N
11	x		x	Northern footings trench Plots 5 & 6
12	x		x	General shot of machine
13	x		x	Feature 502 looking N
14	x		x	Pit 506 looking E
15	x		x	Pit 508 looking E
16	x		x	Soakaway 510 looking NW
17	x		x	Soakaway 514 looking N
18	x		x	Soakaway 514
19	x		x	Eastern footings trench of Plots 7 & 8 looking N
20	x		x	Footings trench of Plots 7 & 8 looking N
21	x		x	Footings trench of Plots 7 & 8 looking E
22	x		x	Footings trench of Plots 7 & 8 looking E
23	x		x	
24	x		x	Ditch 702 looking W
25	x		x	Stanchions 1108 & 1110 looking E
26	x		x	Ground reduction Plots 9 & 10 looking NE
27	x		x	West facing section of ditch 1103
28	x		x	Ditch 1103 looking W
29	x		x	West facing section of Pit 1204
30	x		x	West facing section of Pit 1202
31	x		x	Ditch 1103 looking S
32	x		x	Ditch 1103 looking S
33	x		x	Soakaway to the rear of Plot 12 looking N
34	x		x	Soakaway to the rear of Plots 7 & 8 looking N

### Appendix 3: ASC OASIS Form

PROJECT DETAILS						
Project Name:	Elm Tree Farm, Pirton, Hertfordshire					
Short Description:	<p>In 2006 Archaeological Services and Consultancy Ltd (ASC) carried out a watching brief at Elm Tree Farm, Pirton, Hertfordshire in response to proposals for the construction of 12 private dwellings. The site lies on the eastern side of the medieval village immediately north of Hambridge Way. The archaeological evidence within and around Pirton indicates that settlements have been established close to the site from the Iron Age onwards. The medieval village, which developed from an Anglo-Saxon settlement, is centred on a 12<sup>th</sup> century motte and bailey castle and a contemporaneous church within the bailey precinct.</p> <p>The earliest archaeological remains revealed on Elm Tree Farm are medieval ditches, which suggests that the site was largely peripheral to pre-medieval settlement activity, but that it may have been incorporated into the agricultural system by the later middle ages. Much of the archaeological activity on the site appears to have been associated with the farm and is of fairly recent date. A few post-medieval features were encountered, a closer date for which was not possible due to the paucity of associated finds.</p>					
Project Type: (indicate all that apply)	DBA	FW	Geophys	Survey	Bldg Rec	Post-Exc
	WB	<b>Strip&amp;Rec</b>	Trenching	Test pits	Exc	Other
Site status: (eg. none, SAM, Listed)	None		Previous work: (eg. SMR refs)		Evaluation, Archaeological Solutions, 2004	
Current land use:	Farmyard		Future work: (yes / no / unknown)		No	
Monument type:	Agricultural		Monument period:		Medieval-modern	
Significant finds: (artefact type & period)						
PROJECT LOCATION						
County:	Hertfordshire		OS reference: (to at least 8 figures)		TL 1499 3173	
District:	North Herts.		Parish:		Pirton	
Site address: (with postcode if known)	Elm Tree Farm, Pirton, Hertfordshire					
Study area: (sq. m. or ha)	c.80m x c.100m		Height OD: (metres)		c.70m AOD	
PROJECT CREATORS						
Organisation:	Archaeological Services & Consultancy Ltd					
Project brief originator:	Jonathon Smith		Project design originator:		Calli Rouse	
Project Manager:	Bob Zeepvat		Director/Supervisor:		Karin Semmelmann	
Sponsor / funding body:	Chase Park Construction Ltd.					
PROJECT DATE						
Start date:	09.03.06		End date:		16.09.06	
PROJECT ARCHIVES						
	Location (Accession no.)		Content (eg. pottery, animal bone, files/sheets)			
Physical:						
Paper:	North Herts. Museums		1 box			

Digital:	North Herts. Museums	1 CD	
<b>BIBLIOGRAPHY</b> (Journal/monograph, published or forthcoming, or unpublished client report)			
Title:	Archaeological Strip & Record: Elm Tree Farm, Pirton, Hertfordshire		
Serial title & volume:			
Author(s):	Karin Semmelmann		
Page nos	61	Date:	5 <sup>th</sup> October 2006



## Appendix 4: SMR Summary Sheet

Site name and address: Elm Tree Farm Pirton Hertfordshire		
County: Hertfordshire		District: North Hertfordshire
Village/Town: Pirton		Parish: Pirton
Planning application reference: 1/04/1139		
Client name, address, & tel. no: Chase Park Construction Ltd The Old Plumber's Shop The Woodyard Castle Ashby Northampton NN7 1LF		
Nature of application: Conversion to 12 dwellings		
Present land use: Farmyard		
Size of application area: c.80m x c.100m		Size of area investigated: c.80m x c.100m
NGR (to 8 figures): TL 1499 3173		Site code: 747/PET
Site director/Organization: Bob Zeepvat / ASC Ltd		
Type of work: Strip & Record		
Date of work:	Start: 09.03.06	Finish: 16.09.06
Curating museum: North Herts Museums Services		
Related SMR nos:		Periods represented: Medieval-modern
Relevant previous summaries/reports Archaeological Solutions 2005 <i>Elm Tree Farm, Hambridge Way, Pirton, Hertfordshire.</i>		
<p>Summary of fieldwork results:</p> <p>In 2006 Archaeological Services and Consultancy Ltd (ASC) carried out a watching brief at Elm Tree Farm, Pirton, Hertfordshire in response to proposals for the construction of 12 private dwellings. The site lies on the eastern side of the medieval village immediately north of Hambridge Way. The archaeological evidence within and around Pirton indicates that settlements have been established close to the site from the Iron Age onwards. The medieval village, which developed from an Anglo-Saxon settlement, is centred on a 12<sup>th</sup> century motte and bailey castle and a contemporaneous church within the bailey precinct.</p> <p>The earliest archaeological remains revealed on Elm Tree Farm are medieval ditches, which suggests that the site was largely peripheral to pre-medieval settlement activity, but that it may have been incorporated into the agricultural system by the later middle ages. Much of the archaeological activity on the site appears to have been associated with the farm and is of fairly recent date. A few post-medieval features were encountered, a closer date for which was not possible due to the paucity of associated finds.</p>		
Author: Karin Semmelmann		Date: 5 <sup>th</sup> October 2006