

Archaeological Services & Consultancy Ltd

**WATCHING BRIEF:
MANOR FARM
WOLVERTON
MILTON KEYNES**

NGR: SP 8072 4176

on behalf of City Estates



Nigel Wilson AIFA HND

December 2008

ASC: 1082/MFW/2

Letchworth House
Chesney Wold, Bleak Hall,
Milton Keynes MK6 1NE
Tel: 01908 608989 Fax: 01908 605700
Email: office@archaeological-services.co.uk
Website: www.archaeological-services.co.uk



Site Data

<i>ASC project code:</i>	MFW	<i>ASC Project No:</i>	1082
<i>OASIS ref:</i>	archaeol2 49619	<i>Event/Accession no:</i>	1174/ AYBCM2008.192
<i>County:</i>	Buckinghamshire (historic county)		
<i>Village/Town:</i>	Wolverton		
<i>Civil Parish:</i>	Wolverton CP		
<i>NGR (to 8 figs):</i>	SP 8072 4176		
<i>Extent of site:</i>	c.3500 sq. m.		
<i>Present use:</i>	House, associated access, garden and yards		
<i>Planning proposal:</i>	Provision of new services, landscaping, parking, etc		
<i>Planning application ref/date:</i>	Milton Keynes Council		
<i>Local Planning Authority:</i>	01/02013/FUL		
<i>Date of fieldwork:</i>	07/08/2008-29-11/2008		
<i>Client:</i>	City Estates 10 Bond Avenue Bletchley Milton Keynes MK1 1SW		
<i>Contact name:</i>	Andy Green		

Internal Quality Check

<i>Primary Author:</i>	Nigel Wilson	<i>Date:</i>	5 th December 2008
<i>Revisions:</i>		<i>Date:</i>	
<i>Edited/Checked By:</i>		<i>Date:</i>	

© Archaeological Services & Consultancy Ltd

No part of this document is to be copied in any way without prior written consent.

Every effort is made to provide detailed and accurate information. However, Archaeological Services & Consultancy Ltd cannot be held responsible for errors or inaccuracies within this report.

© Ordnance Survey maps reproduced with the sanction of the Controller of Her Majesty's Stationery Office.
ASC Licence No. AL 100015154

CONTENTS

Summary.....	4
1. Introduction	4
2. Aims & Methods	8
3. Archaeological & Historical Background	9
4. Results.	10
5. Conclusions	19
6. Acknowledgements	20
7. Archive	20
8. References	21

Appendices:

1. ASC Watching Brief Monitoring Sheets.....	23
2. Photo List.....	31
3. ASC OASIS Form	32

Figures:

1. General location	3
2. Site plan.....	6
3. Proposed development.....	7
4. Observed trenches	17
5. Location of the robbed out brick wall, SE corner of the house.....	18

Plates:

Cover: Overall view of the farmhouse looking NE

1. Modern pit to NW of the house.....	11
2. Modern services, east barn south facing wall and general view into the courtyard	11
3. Robbed brick wall at the SE corner of the house	12
4. Typical soil profile in the deeper trenches to the NW of the house	12
5. House footings (NW corner)	13
6. Eastern barn south facing wall footings	13
7. Trench to the south of the house.....	14
8. Trench in the main courtyard	14
9. Old service pipe and trench in the courtyard.....	15
10. Old service trench on the west side of the courtyard	15
11. Trench to the east of the easternmost barn	16
12. Trench running from the NW corner of the house	16

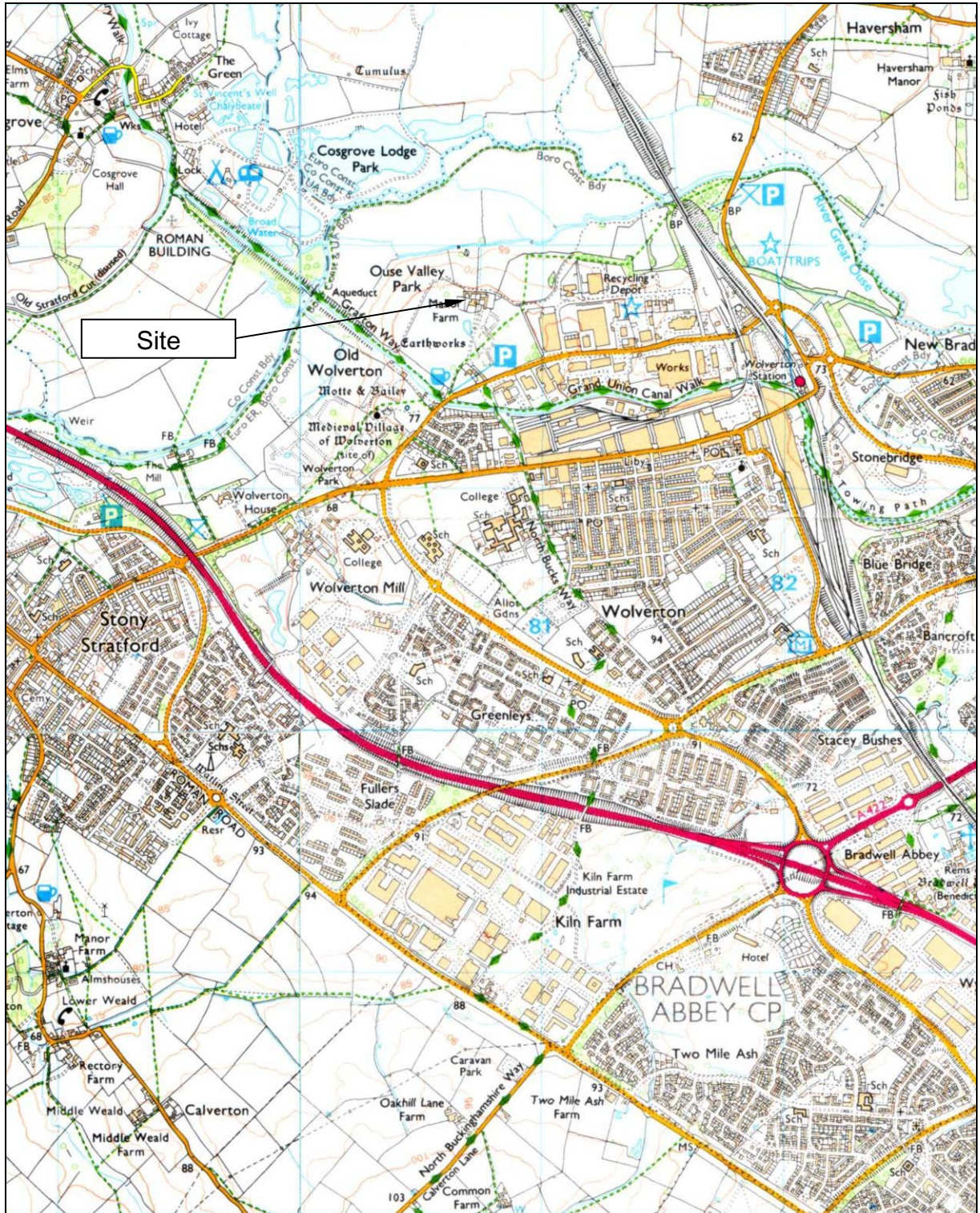


Figure 1: General location (scale 1:25,000)

Summary

During the late summer and autumn of 2008 a watching brief was undertaken at Manor Farm Wolverton, Milton Keynes, as a condition of scheduled monument consent during the excavation of a series of service trenches around the farmhouse whilst the house was being renovated. The soil profile observed was similar in all of the trenches with a modern highly disturbed soil overlying the natural limestone. No features or finds of archaeological significance were revealed during the watching brief. Where the trenches met the walls of the house it was found that the footings comprised four of five courses of stone sitting directly on the natural limestone.

1. Introduction

1.1 Between August and November 2008 *Archaeological Services and Consultancy Ltd* (ASC) carried out a watching brief at Manor Farm, Wolverton, Milton Keynes. The project was commissioned by City Estates, and was undertaken in accordance with a mitigation scheme (Zeepvat 2000) prepared for the site and approved on behalf of the local planning authority (LPA), *Milton Keynes Council*, by their Archaeological Officer (MKCAO), and by English Heritage (EH). In line with the mitigation strategy a project design (Zeepvat 2008) was produced to define the precise aims of the watching brief and methods to be used. The relevant planning application reference is 01/02013/FUL.

1.2 *Planning Background*

This watching brief was required as a condition of scheduled monument consent, due to its location within the area defined as the deserted medieval village of Old Wolverton a scheduled ancient monument (SAM 13609).

1.3 *Archaeological Services & Consultancy Ltd*

Archaeological Services & Consultancy Ltd (ASC) is an independent archaeological practice providing a full range of archaeological services including consultancy, field evaluation, mitigation and post-excavation studies, historic building recording and analysis. ASC is recognised as a *Registered Archaeological Organisation* by the Institute of Field Archaeologists, in recognition of its high standards and working practices.

1.4 *Management*

The project was managed by Karin Semmelmann BA MA MIFA, and was carried out under the overall direction of Bob Zeepvat BA MIFA.

1.5 *The Site*

1.5.1 *Location & Description*

Manor Farm is located in the civil parish of Wolverton, within and close to the northern boundary of Milton Keynes (Fig. 1). The farmhouse and farm buildings, centred on NGR SP 8072 4176, lie at the centre of an area of some 25ha of agricultural land, bordered to the south and east by Old Wolverton Road and its associated industrial estate, to the south-west by the Grand Union Canal, and to the north-west and north by open pasture, and mostly used for

rough grazing, forming the flood plain of the river Ouse, which lies *c.*0.5km north of Manor Farm.

South-east of the house are the earthworks of the deserted village of Old Wolverton. Traces of the settlement extend for nearly 1.5km beyond the canal to the south-east, encompassing the parish church of All Saints and the adjacent motte-and-bailey castle, constructed in the 11th or 12th century. The village earthworks appear to comprise a series of crofts fronting a north-south street. The large pond south of the farmhouse may be a more recent creation. The present access to the farmhouse is by a roughly surfaced track running northwards from Old Wolverton Road, east of the canal bridge. This track follows the line of the former village street. East of the farm there are areas of surviving ridge and furrow.

The farmhouse and farm buildings at Manor Farm (Fig. 2) are Grade II listed. The site and surrounding area, comprising the earthworks of the deserted village of Old Wolverton, are a Scheduled Ancient Monument (SAM 13609). The house has been unoccupied for some years, and has suffered damage through vandalism and theft of fixtures and fittings, but is currently undergoing renovation. The surrounding farm buildings were converted for use as offices in 2003/4, with associated car parking and a new vehicular access route off Old Wolverton Road.

1.5.2 *Geology & Topography*

Manor Farm stands on the edge of a prominent scarp, at an elevation of *c.*75m OD, with commanding northward views across the floodplain of the Ouse towards Haversham, Castlethorpe and Cosgrove. To the north, the land falls sharply to the floodplain (*c.*65m OD), which is bordered to the south by a tributary stream. To the south of the site lies a more or less level plateau, on which stands the Victorian town and railway works of Wolverton. Soils in the area belong to the Hanslope association (Soil Survey 1983, 411d), described as 'slowly permeable calcareous clayey soils. Some slowly permeable non-calcareous clayey soils. Slight risk of water erosion'. The underlying geology is Blisworth limestone (BGS, Sheet 203).

1.5.3 *Proposed Development*

This forms part of the renovation of the farmhouse, and comprises the provision of a full suite of services, along with associated landscaping, provision of access and parking, etc (Fig. 3).

1.5.4 *Previous Archaeological Works*

The earthworks of the deserted village were recorded by the former Milton Keynes Archaeology Unit in the 1980s (Croft & Mynard 1993, 183). In 1992, a desk-based assessment of the site was prepared by the Cotswold Archaeological Trust (CAT 1992). In 2000, following proposals by the Milton Keynes Parks Trust, who then owned the farm and surrounding area, for refurbishment of the farm house and buildings, and conversion of the latter for office use, ASC was commissioned to prepare an archaeological mitigation scheme for the site (Zeepvat 2000). This was accepted by the LPA, and has formed the basis for subsequent works, which have comprised historic building recording of the house and farm buildings (Zeepvat & King 2001), and a

watching brief on the new access road, car park and provision of services to the farm buildings (Wilson & Abrams 2003).

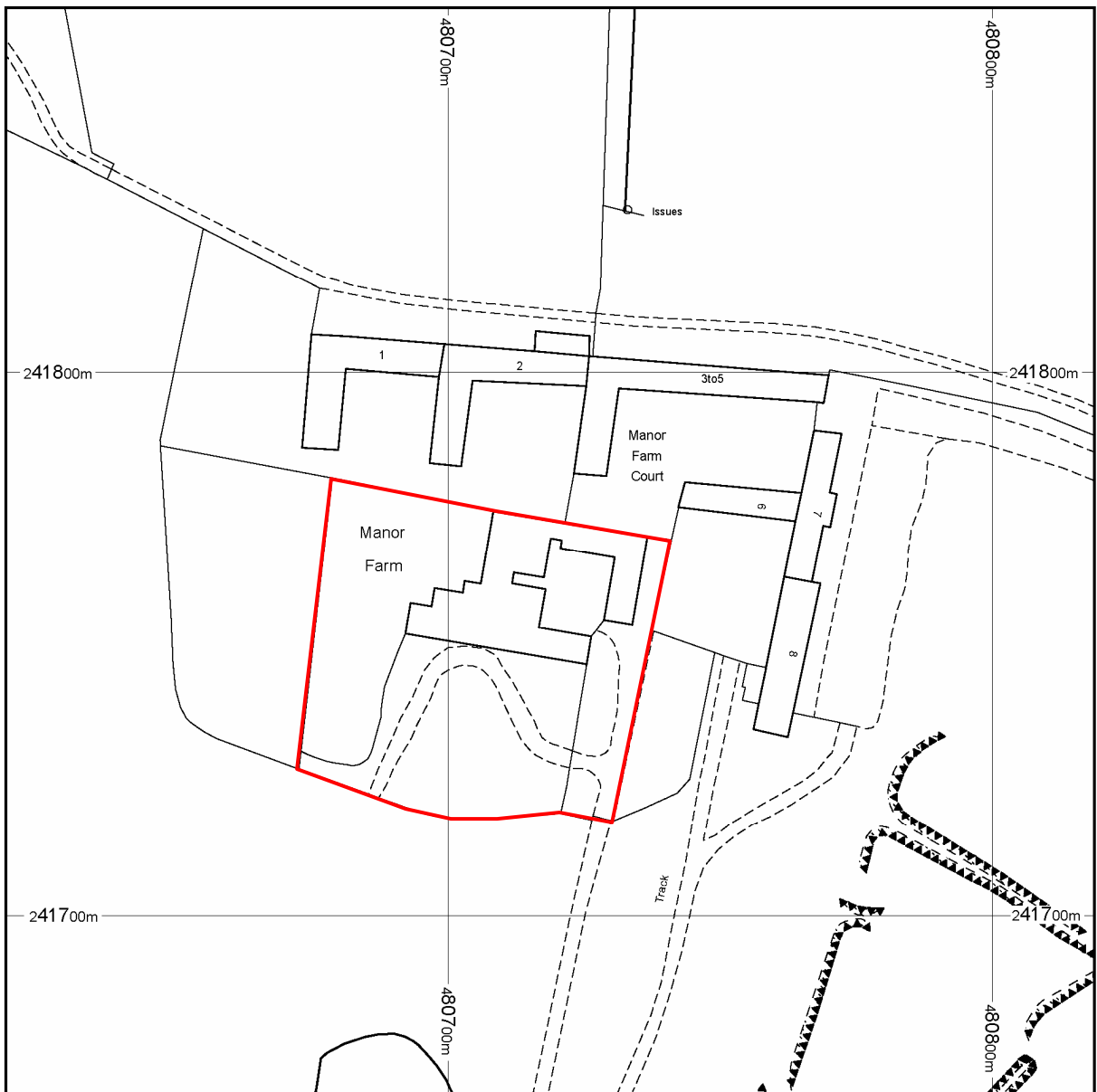


Figure 2: Site plan, showing area affected by present proposals (scale 1:1250)

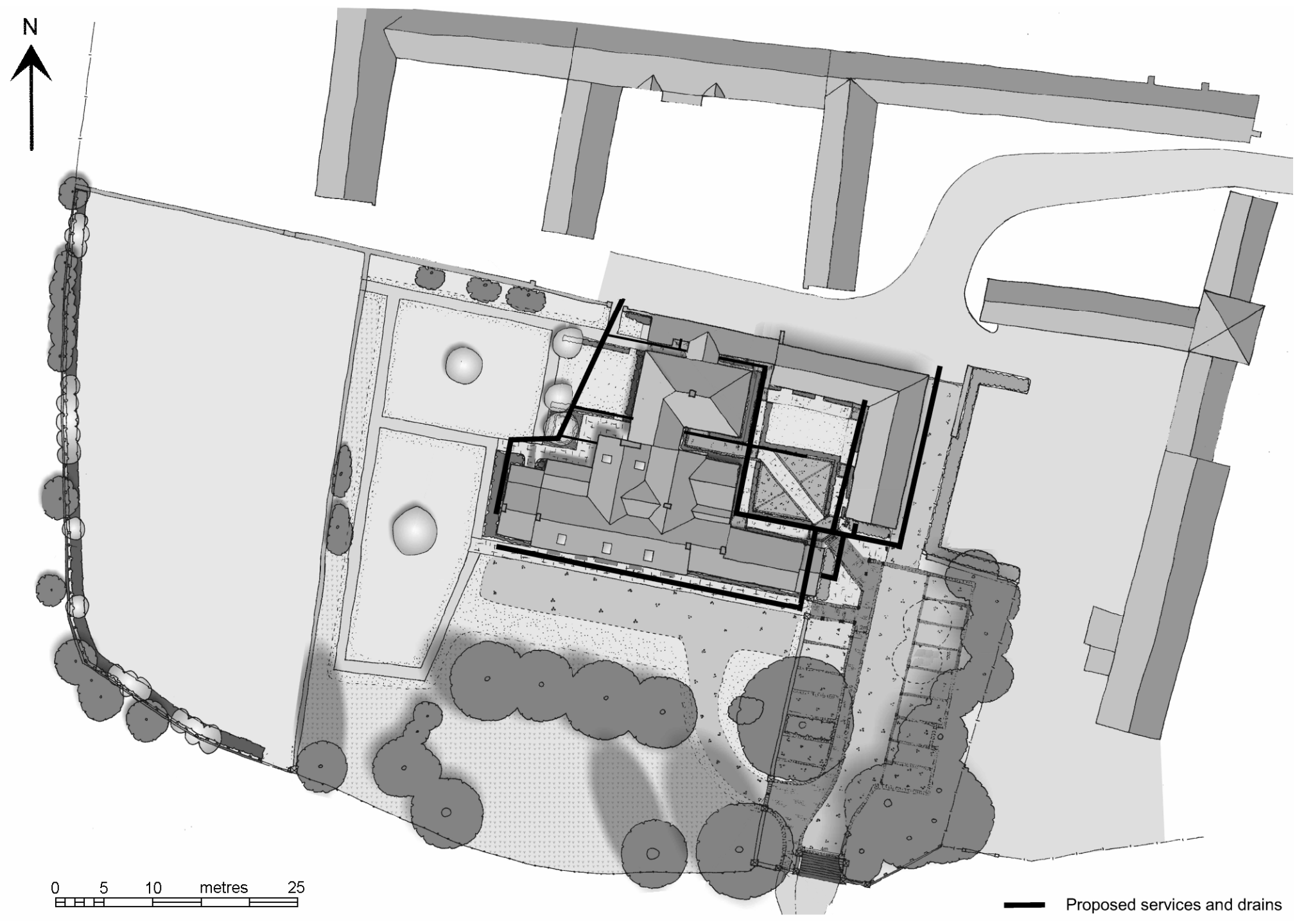


Figure 3: Proposed development (scale 1:500)

2. Aims & Methods

2.1 *Aims*

In line with the requirements of the mitigation strategy (Zeepvat 2000, 3.1) and the project design, the aims of the project were:

- to consider the location, extent, date, character, condition, significance and quality of any surviving archaeological remains which were liable to be threatened by the development.
- to ensure the archaeological monitoring of all aspects of the development programme likely to affect archaeological remains;
- to secure the adequate recording of any archaeological remains and historic fabric and/or features revealed by the development programme;
- to secure the analysis, conservation and long-term storage of any archaeological records and artefactual/ecofactual material recovered from the site;
- to secure the appropriate reporting and publication of the results of the project;
- to satisfy the requirements of Scheduled Monument Consent and Listed Building Consent as defined by English Heritage and the Local Planning Authority.

2.2 *Standards*

The work conformed to the project design, to the relevant sections of the Institute of Archaeologists' *Code of Conduct* (IFA 2000) and *Standard & Guidance Notes* (IFA 2001), and to the relevant sections of ASC's own *Operations Manual*.

2.3 *Methods*

In line with the requirements of the mitigation strategy (Zeepvat 2000, 4.1), the methods to be adopted for this project were:

- a watching brief on any groundworks within the curtilage of the farm house, with investigation and recording of any archaeological features or deposits revealed;
- the preparation of a report and ordered archive.

2.4 *Constraints*

The work was carried out according to the methods described above which enabled the aims of the project to be satisfactorily met.

3. Archaeological & Historical Background

3.1 The archaeological and historical background to the site has been covered in detail in the mitigation strategy (Zeepvat 2000, Section 2). In brief, the site is considered archaeologically significant for the following reasons.

- *Prehistoric:* prehistoric activity is well attested in the Ouse valley. Bronze Age ring ditches have been excavated at Warren Farm, about 1km SSW of Manor Farm, and late Bronze Age and Iron Age farmsteads were excavated at Blue Bridge, 2km to the south-east.
- *Roman:* Roman villas have been identified at regular intervals on both sides of the Ouse valley. Those at Bancroft, 2km to the south-east, and at Cosgrove, 0.6km to the north, have been excavated. In the immediate vicinity, Roman finds and features were located 0.3km south of the farm, at Manor Farm Cottages, and Roman finds have been recovered to the immediate west of the scheduled monument.
- *Saxon:* Evidence of Saxon settlement has been excavated at Warren Farm, and Saxon finds have been recovered to the immediate west of the scheduled monument. The village at Old Wolverton was probably founded in the late Saxon period.
- *Medieval:* Manor Farm lies within the Old Wolverton village earthworks. Documentary evidence suggests that the farm occupies the site of an early medieval grange. The fields to the north and east of the farm contain surviving ridge and furrow.
- *Post-Medieval:* The present Manor Farm was established in the 17th-century, and largely rebuilt as a 'model farm' in the 19th century. The building survey identified certain farm buildings that may have survived from before the rebuild, but there was insufficient evidence to determine the layout of the farm prior to the 19th-century rebuild.

4. Results

- 4.1 The proposed service plan was followed with minor amendments (Fig 4). As each trench was excavated an experienced archaeologist was in attendance to record the stratigraphy within the trench and plot its location. Nine visits were made between August and November 2008.

- 4.2 The service trenches were mechanically excavated and ranged in width from 0.3 to 0.6m with depths between 0.4 and 1.2m. Other than a pit containing modern bricks and other building material observed on the 17th November (Plate 1: Fig. 4) and a number of existing service runs (Plate 2) the only feature of archaeological significance observed was a robbed out brick footing at the eastern end of the trench observed on the 29th November to the south of the house (Fig. 5: Plate 3). The red bricks in this wall footing were similar to the bricks used in the construction of a lean-to building butted onto the eastern end of the house and it is likely that the footing and lean-to are contemporary. The bricks in this footing measured 220x110x70mm and were bonded with a sandy lime mortar. No finds earlier than modern were observed during the excavation of the trenches. Below the turf and humic topsoil layer there was a layer of yellowish clay covering the natural limestone, which was encountered at 0.3-0.5m below the existing ground surface (Plate 4).

- 4.3 Observations made on the footings of the farmhouse in the northwest corner of the building revealed that the limestone walls continue down a further four or five courses using smaller rougher limestone blocks than the exposed masonry above and sat on the natural limestone (Plate 5). The footings for the barn at the eastern end of the farm complex were constructed of rough limestone bonded with lime mortar and sat on the top of the natural limestone about 0.4m below the current ground surface (Plate 6).



Plate 1: Modern pit to NW of the house



Plate 2: Modern services, east barn south facing wall and general view into the courtyard



Plate 3: Robbed brick wall at the SE corner of the house



Plate 4: Typical soil profile in the deeper trenches to the NW of the house



Plate 5: House footings (NW corner)



Plate 6: Eastern barn south facing wall footings



Plate 7: Trench to the south of the house



Plate 8: Trench in the main courtyard



Plate 9: Old service pipe and trench in the courtyard



Plate 10: Old service trench on the west side of the courtyard



Plate 11: Trench to the east of the easternmost barn



Plate 12: Trench running from the NW corner of the house

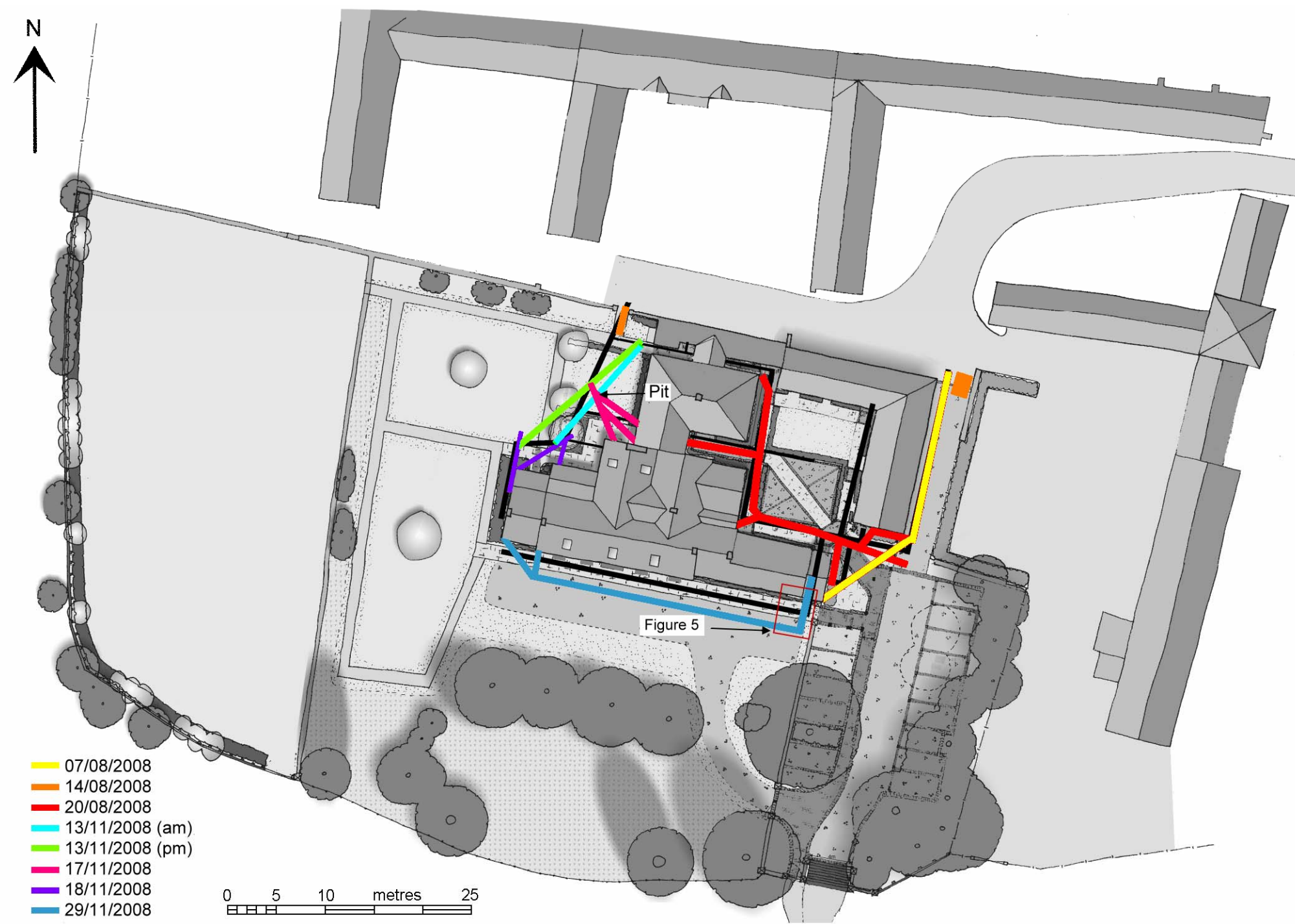


Figure 4: Observed trench plan showing the date each trench was observed (scale 1:500)

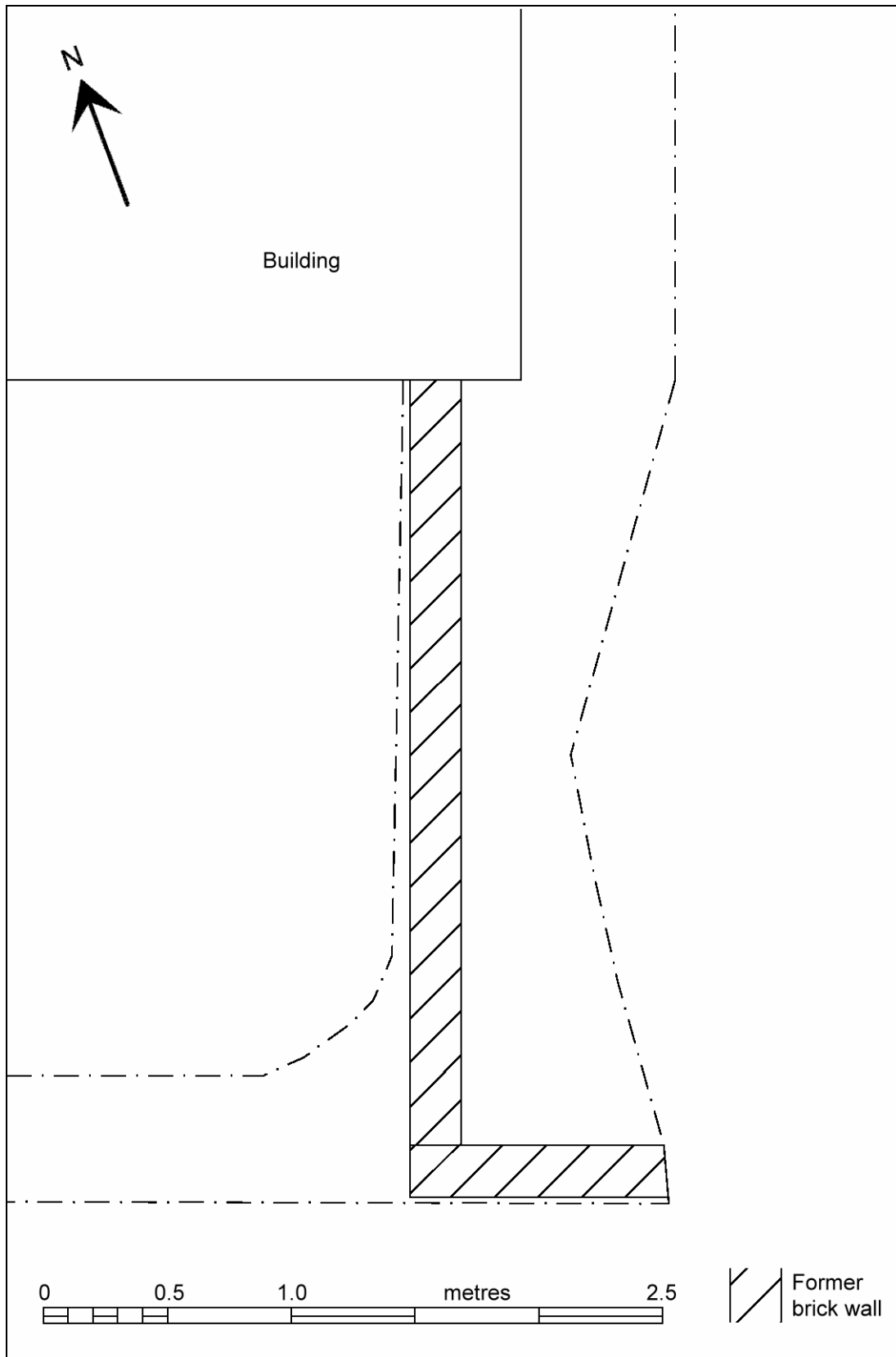


Figure 5: Location of the robbed out brick wall, SE corner of the house (Scale 1:25)

5. Conclusions

- 5.1 The watching brief at Manor Farm has enabled a further area of the Old Wolverton scheduled site to the north of the earthworks to be examined. Previous work around Manor Farm over the past eight years by ASC has produced very limited results the only significant features being a few possibly medieval ditches to the west of the farm complex.
- 5.2 The current observation and recording programme has again demonstrated that the soils in the area immediately around the house are very shallow and disturbed, sitting directly on the natural limestone. From the amount of modern debris and lack of earlier material observed it is clear that the area surrounding the house is unlikely to contain significant remain from the medieval or early post medieval periods.
- 5.3 It is surmised that the current farmhouse is on the site of the former grange. However, from the evidence obtained during the watching briefs and historic building recording work on the site no evidence pre-dating the founding of the existing house, probably in the late 17th or early 18th centuries, has been revealed.

6. Acknowledgements

The evaluation was commissioned by Andy Green of City Estates. The project was monitored by Nick Crank, Archaeological Officer Milton Keynes, on behalf of the local planning authority. Thanks are also due to all the onsite contractors for their co-operation during the watching brief.

The project was managed for ASC by Karin Semmelmann BA MA MIFA. The fieldwork was carried out by Nigel Wilson, Martin Cuthbert and Calli Rouse. Nigel Wilson prepared the report which was edited by Bob Zeepvat BA MIFA.

7. Archive

7.1 The project archive will comprise:

1. Brief
2. Project Design
3. Initial Report
4. Clients site plans
5. Site Monitoring Sheets
6. List of photographs
7. B/W prints & negatives
8. CDROM with copies of all digital files.

7.2 The archive will be deposited with Buckinghamshire County Museum under the Accession number AYBCM 2008.192.

8. References

Standards & Specifications

- EH 1991 *The Management of Archaeological Projects*, 2nd edition. English Heritage (London).
- IFA 2000a Institute of Field Archaeologists' *Code of Conduct*.
- IFA 2000b Institute of Field Archaeologists' *Code of Approved Practice for the Regulation of Contractual Arrangements in Field Archaeology*.
- IFA 2001 Institute of Field Archaeologists' *Standard & Guidance documents (Desk-Based Assessments, Watching Briefs, Evaluations, Excavations, Investigation and Recording of Standing Buildings, Finds)*.
- Zeepvat B 2000 *Manor Farm, Wolverton, Milton Keynes: an archaeological mitigation scheme relating to the proposed development of the site, on behalf of Milton Keynes Parks Trust Ltd*. ASC doc. ASC/M/MFW99/1 (July 2000).
- Zeepvat B 2008 *Manor Farm Wolverton, project design for archaeological watching brief*. ASC doc. ASC/1082/MFW/1 (June 2008)

Secondary Sources

- BGS *British Geological Survey 1:50,000 Series, Solid & Drift Geology*.
- CAT 1992 *Manor Farm, Old Wolverton, Milton Keynes, Buckinghamshire: Archaeological Assessment*. Cotswold Archaeological Trust, Report No. 92100.
- Croft R.A. and Mynard D.C., 1993 *The changing landscape of Milton Keynes*. Buckinghamshire Archaeol. Soc. Monog. Ser. 5 (Aylesbury).
- Soil Survey 1983 *1:250,000 Soil Map of England and Wales, and accompanying legend* (Harpenden).
- Wilson N & Abrams J 2003 *Watching Brief: Manor Farm, Old Wolverton, Milton Keynes*. ASC report ref. ASC/MFW02/4
- Zeepvat B & King N 2001 *Historic Building Survey of Manor Farm, Old Wolverton, Milton Keynes*. ASC Ltd, report ref ASC/M/MFW00/2

Appendix 1: Monitoring Sheets

A.S.C. LTD		ARCHAEOLOGICAL FIELD MONITORING RECORD				
Project: MANOR FARM WOLVERTON		Project No/Code: 1082 1 MFW		Sheet: 1 of 9		
Client/Developer: CITY ESTATEZ		Date of visit: 7/8/08				
Contact: ANDY		Phone:				
Duration of Visit (inc. travel):		Start: 9.10		Finish: 12.10		
Completed by: N J WILSON						
Development Type:						
Footings	Services <input checked="" type="checkbox"/>	Roads	Levelling	Quarrying	Pipelines	Other (specify):
Site & weather conditions: OVERCAST / RAIN						
Observations: TRENCH 1 FOR GAS PIPE OPENED ALONG EAST SIDE OF BARN. DISTURBED GROUND TO TOP OF BRASH. PLASTIC BAGS ETC. VERY MODERN. TRENCH FOLLOWS SIDE OF BARN TO S. END THEN DIAGONAL TO S. BARN 1.3m FROM SE CORNER. TRENCH 600mm x 600mm. TARMAC SURFACE C. 200mm BELOW SURFACE INTO COURTYARD. EXISTING SERVICES AT N. END OF TRENCH & WATER MAIN JUST TO E. OF TRENCH EXPOSED.						
Comments: ANDY WILL PHONE WHEN READY TO START DIGGING AGAIN MONDAY? WAITING FOR GAS INSTALLERS.						

For sketch plan, use separate sheet

©ASC 2007



A.S.C. LTD

ARCHAEOLOGICAL FIELD MONITORING RECORD

Project: MANOR FARM WOLVERTON		Project No/Code: 10821	Sheet: 2 of 9
Client/Developer		Date of visit: 12/08/08	
Contact:		Phone:	
Duration of Visit (inc. travel):	Start: 8.20	Finish: 10.20	
Completed by: CR			
Development Type:			
Footings	Services	Roads	Levelling
			Quarrying
			Pipelines
			Other (specify):
Site & weather conditions: Overcast			
Observations: NOTHING CARRIED OUT WHILE ON SITE.			
Comments:			

For sketch plan, use separate sheet

©ASC 2007



A.S.C. LTD

ARCHAEOLOGICAL FIELD MONITORING RECORD

Project: WOLVERTON, MANOR Fm			Project No/Code: 1		Sheet: 3 of 9	
			Date of visit: 14/8			
Client/Developer: CITY ESTATES						
Contact:			Phone:			
Duration of Visit (inc. travel):		Start: 9.40		Finish: 11.25		
Completed by: N3W						
Development Type:						
Footings	Services <input checked="" type="checkbox"/>	Roads	Levelling	Quarrying	Pipelines	Other (specify):
Site & weather conditions: DRY SUNNY						
Observations: TWO SMALL AREAS OPENED LOOKING FOR EXISTING SERVICES. AREA 1 NEXT TO THE NEW GAS PIPE AREA 2 TRENCH SOUTH FROM GATE IN THE NORTH WALL W. END OF THE HOUSE						
NO ARCHAEOLOGY, SEE PLAN						
Comments:						

For sketch plan, use separate sheet

©ASC 2007



A.S.C. LTD

ARCHAEOLOGICAL FIELD MONITORING RECORD

Project: MANOR FARM, WOLVERTON		Project No/Code: 10821MFW	Sheet: 4 of 9
		Date of visit: 20/8/2008	
Client/Developer: CITY ESTATES			
Contact:		Phone:	
Duration of Visit (Inc. travel):	Start: 9.00	Finish: 10.30	
Completed by: NZW			
Development Type:			
Footings	Services <input checked="" type="checkbox"/>	Roads	Levelling
			Quarrying
			Pipelines
			Other (specify):
Site & weather conditions: DRY, OVERCAST, SITE DRY			
Observations: NEW TRENCHES IN COURTYARD TO N. OF FARM HOUSE & EAST OF FARM HOUSE. ALL 0.6m WIDE. MODERN DISTURBED SURFACE DEPOSITS 0-300mm ABOVE NATURAL SANDS LIMESTONE BRASH. SEVERAL EXISTING SERVICE/DRAIN RUNS NOTED RECORDED ON PLAN. NO FEATURES OR DEPOSITS LIKELY TO PRE DATE THE CURRENT HOUSE, MOST AREAS SEEM TO HAVE BEEN DISTURBED IN THE LAST 50 YEARS.			
Comments: THEY WILL CALL WHEN MORE TRENCHES ARE TO BE OPENED			

For sketch plan, use separate sheet

©ASC 2007



A.S.C. LTD

ARCHAEOLOGICAL FIELD MONITORING RECORD

Project: wolverton manor farm		Project No/Code: 1082 / MFW		Sheet: 5 of 9		
		Date of visit: 13 / 11 / 08				
Client/Developer						
Contact:			Phone:			
Duration of Visit (inc. travel):		Start: 10:00		Finish: 12:00		
Completed by: M.C						
Development Type:						
Footings	Services <input checked="" type="checkbox"/>	Roads	Levelling	Quarrying	Pipelines	Other (specify):
Site & weather conditions: drizzly. cold.						
Observations: pile trench. NW of house (see plan) 500mm wide 13m long 1.1m deep • disturbed ground at Northern end modern disturbance by kerides. (first 3.4m) Topsoil + redeposited chalky limestone (natural) marked with brick and tile • Virgin ground South of this. Topsoil - 300mm Subsoil - 350mm natural - 450 < mm Topsoil - silty dark brown lean Sub - silty grey brown silty chalky limestone. nat - chalky limestone beige. lg limestone boulders						
Comments: visit again later today.						

For sketch plan, use separate sheet

©ASC 2007



A.S.C. LTD

ARCHAEOLOGICAL FIELD MONITORING RECORD

Project: 1082/MFW		Project No/Code: 1082-1 MFW		Sheet: 7 of 9	
MANOR FARM, WOLVERTON		Date of visit: 18/11/2008			
Client/Developer					
Contact:			Phone:		
Duration of Visit (inc. travel):	Start: 1.00			Finish: 2.00	
Completed by: NSW					
Development Type:					
Footings	Services <input checked="" type="checkbox"/>	Roads	Levelling	Quarrying	Pipelines
Other (specify):					
Site & weather conditions: DRY BRIGHT					
Observations: CONTINUATION FROM YESTERDAY, NEW TRENCHES SKETCHED					
Comments: NEXT VISIT 2-3 WEEKS					

For sketch plan, use separate sheet

©ASC 2007



A.S.C. LTD

ARCHAEOLOGICAL FIELD MONITORING RECORD

Project: MANOR FARM, WOLVERTON		Project No/Code: 10821 MFW	Sheet: 8 of 9
		Date of visit: 17/11/08	
Client/Developer			
Contact:		Phone:	
Duration of Visit (inc. travel): Start: 1.45		Finish: 2.55	
Completed by: N3W			
Development Type:			
Footings	Services <input checked="" type="checkbox"/>	Roads	Levelling
			Quarrying
			Pipelines
			Other (specify):
Site & weather conditions: DAMP OVERCAST			
Observations: WORKING AT NW CORNER OF SITE CUTTING DRAIN RUNS 500 mm WIDE 0.4-1.1 DEEP 3 RUNS TO OBSERVE. ONLY FEATURE MODERN PIT WITH A BRICK IN THE BASE. MOUSE FOOTING - OBSCURED 4 COURSES OF LIME MORTAR BANNED LIMESTONE SITTING ON NATURAL LIMESTONE (c. 400 mm)			
Comments: ANOTHER VISIT TOMORROW UNLESS HEAR OTHERWISE			

For sketch plan, use separate sheet

©ASC 2007



A.S.C. LTD

ARCHAEOLOGICAL FIELD MONITORING RECORD

Project: wolverton manor farm		Project No/Code: 1082 / MFW		Sheet: 9 of 9	
		Date of visit: 29/11/08			
Client/Developer					
Contact:				Phone:	
Duration of Visit (inc. travel):		Start: 1130		Finish: 1400	
Completed by: M.C					
Development Type:					
Footings	Services <input checked="" type="checkbox"/>	Roads	Levelling	Quarrying	Pipelines
Other (specify):					
Site & weather conditions: dry, overcast, cold					
Observations: Trench along south side of house. 500mm - wide 750mm - deep 29m - long. undisturbed = 500mm - mixed topsoil dark brown silty brick + tile frags 250mm - limestone - chalk natural. lg limestone frags disturbed areas = see sketch sheet (2) Brick wall at eastern end of trench see sketch sheet (3) Similar bricks too lean too - red brick. 220mm-long lime and sand mortar. 70mm - deep Bond = unknown. 110mm - wide.					
Comments: possibly end of any more excavation. They'll ring if theres anything else.					

For sketch plan, use separate sheet

©ASC 2007

Appendix 2: List of Photographs

SITE NAME: Manor Farm, Wolverton		SITE NO/CODE: 1082/MFW		Accession No. AYBCM 2008.192
Shot	B&W	Digital	Subject	
1	√	√	East of east barn	
2	√	√	East of east barn	
3	√	√	South facing foundation east barn	
4	√	√	General view looking west into the courtyard	
5	√	√	West side of courtyard showing modern service trench	
6	√	√	West side of courtyard showing modern service trench	
7	√	√	South side of courtyard general soil profile	
8	√	√	West side of courtyard general view of trench	
9	√	√	Detail of trench NW of house	
10	√	√	Detail of soil profile NW of house	
11	√	√	General view of trench NW of house part backfilled	
12	√	√	General view of trench NW of house part backfilled	
13	√	√	General view of trench NW of house part backfilled	
14	√	√	General view of trench NW of house part backfilled	
15	√	√	Detail of trench NW of house	
16		√	Detail of trench NW of house	
17	√	√	General view of trench NW of house part backfilled	
18		√	General view of trench NW of house part backfilled	
19		√	General view of trench NW of house part backfilled	
20		√	General view of trench NW of house part backfilled	
21	√	√	Detail of house footing NW corner	
22	√	√	Modern pit NW of house	
23	√	√	General action shot NW of house	
24	√	√	General view of trenches NW of house	
25	√	√	General view of trench SE of house	
26	√	√	General view of trench S of house	
27	√	√	General view of trench S of house	
28	√	√	General view of trench S of house	
29	√	√	Detail of soil profile S of house	
30	√	√	Detail of soil profile SW of house and house footing	
31	√	√	Detail of soil profile SW of house and house footing	
32	√	√	Detail of soil profile SE of house and house footing	
33	√	√	Detail of brick wall SE of house	
34	√	√	General view of brick wall SE of house	
35	√	√	Detail of trench SE of house	
36	√	√	Detail of trench SE of house	

Appendix 3: ASC OASIS Form

archaeol2 49619

PROJECT DETAILS			
Project Name:	Manor Farm Wolverton		
Short Description:	During the late summer and autumn of 2008 a watching brief was undertaken at Manor Farm Wolverton, Milton Keynes, as a condition of scheduled monument consent during the excavation of a series of service trenches around the farmhouse whilst the house was being renovated. The soil profile observed was similar in all of the trenches with a modern highly disturbed soil overlying the natural limestone. No features or finds of archaeological significance were revealed during the watching brief. Where the trenches met the walls of the house it was found that the footings comprised four of five courses of stone sitting directly on the natural limestone.		
Project Type:	Watching Brief		
Site status: (eg. none, SAM, Listed)	SAM 13609, Listed Bld.	Previous work: (eg. SMR refs)	Bld recording Desk-based assessment
Current land use:	Garden and yards	Future work: no	no
Monument type:	N/a	Monument period:	N/a
Significant finds: (artefact type & period)	N/a		
PROJECT LOCATION			
County:	Buckinghamshire	OS reference: (8 figs min)	SP 8072 4176
District:	Milton Keynes	Parish:	Wolverton
Site address: (with postcode if known)	Manor Farm, Old Wolverton Rd. Old Wolverton Milton Keynes MK12 5NN.		
Study area: (sq. m. or ha)	3500 sq m	Height OD: (metres)	75.00
PROJECT CREATORS			
Organisation:	Archaeological Services & Consultancy Ltd		
Project brief originator:	N/a	Project design originator:	ASC Ltd
Project Manager:	Bob Zeepvat	Director/Supervisor:	Nigel Wilson
Sponsor / funding body:	City Estates		
PROJECT DATE			
Start date:	07-08-2008	End date:	29-11-2008
PROJECT ARCHIVES			
	Location (Accession no.)	Content (eg. pottery, animal bone, files/sheets)	
Physical:	N/a		
Paper:	Bucks County Museum	Monitoring Sheets	
Digital:	Bucks County Museum	CD: Documents, Images	
BIBLIOGRAPHY (Journal/monograph, published or forthcoming, or unpublished client report)			
Title:	Watching Brief: Manor Farm, Wolverton, Milton Keynes		
Serial title & volume:	ASC Ltd Report ref. 1082/WMF/2		
Author(s):	Wilson, N.		
Page nos	1-31	Date:	05-12-2008