

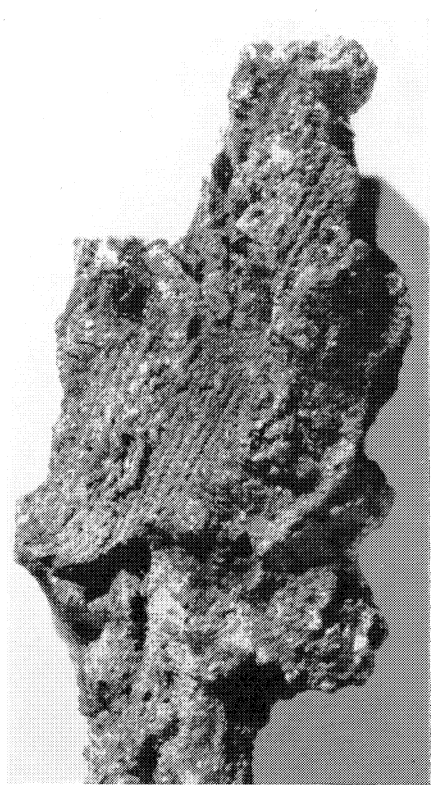
PLATE I



A



B



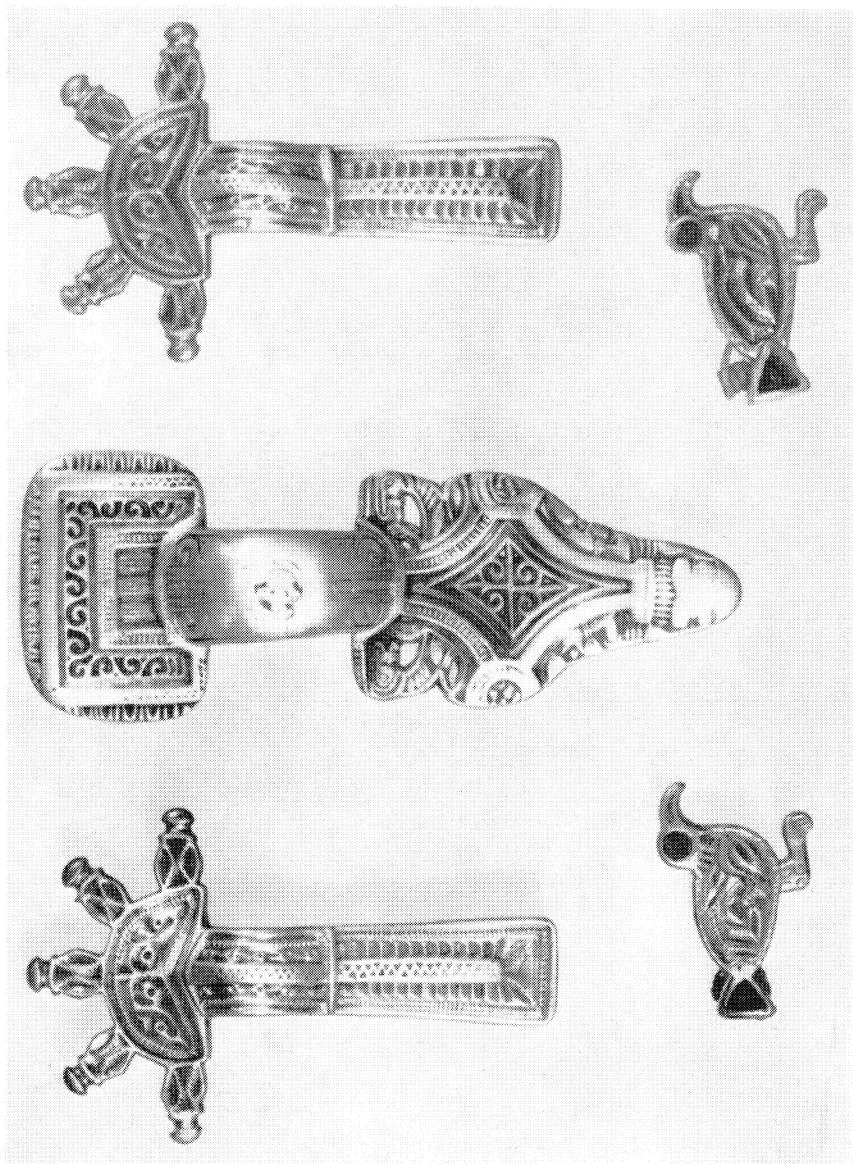
C

THE ANGLO-SAXON CEMETERY AT FINGLESHAM, KENT

- A. The site of the cemetery (p. 3).
B. View of grave G 2 (p. 21).
C. Textile remains from grave D 3 (pp. 36-7). Sc.: over $\frac{1}{4}$

*Phh: A, Sonia Chadwick
B, W. P. D. Stebbing
C, Ministry of Works*

PLATE II



JEWELLERY FROM GRAVE D 3, FINGLESHAM CEMETERY (pp. 14 ff., 40 ff., 45 ff.)

Sc. 1

Ph: Sonia Chadwick

MEDIEVAL ARCHAEOLOGY, VOL. II (1938)

CHADWICK, ANGLO-SAXON CEMETERY AT FINGLESHAM

PLATE III



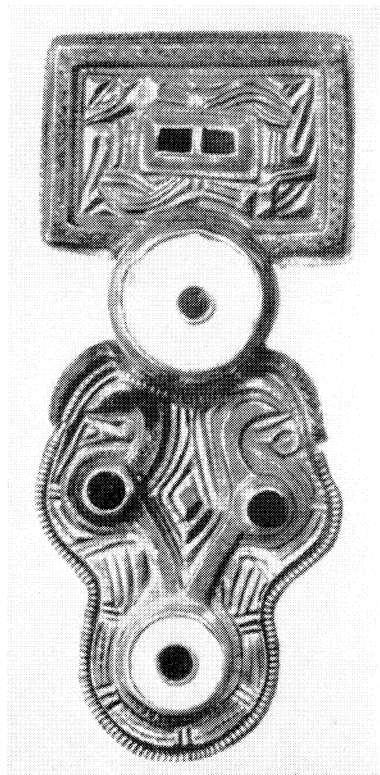
BEADS AND BRACTEATES FROM GRAVE D 3, FINGLESHAM CEMETERY (pp. 14, 42 ff.)

Sc. 1

Ph.: *Sonia Chadwick*

CHADWICK, ANGLO-SAXON CEMETERY AT FINGLESHAM

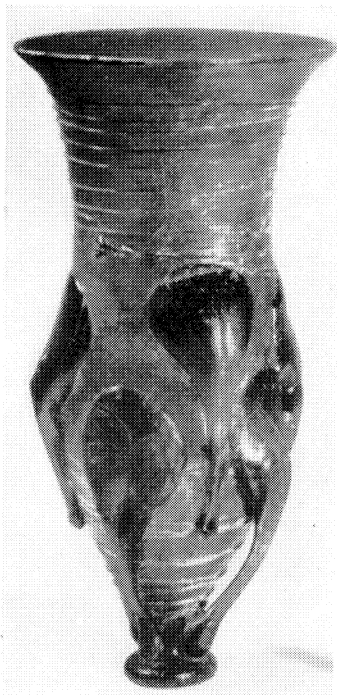
MEDIEVAL ARCHAEOLOGY, VOL. II (1958)



A



B



C



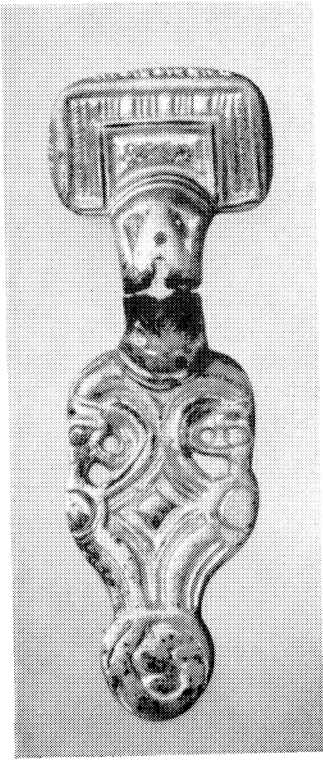
D

THE ANGLO-SAXON CEMETERY AT FINGLESHAM, KENT

A-B. Jewellery from grave E 2 (pp. 18 ff., 57 ff.). Sc. $\frac{1}{4}$
 C. Glass claw-beaker from grave D 3 (pp. 12, 37). Sc. $\frac{1}{2}$
 D. Glass palm-cup from grave AA 4 (pp. 27, 37). Sc. $\frac{1}{2}$

*Phs.: A-C, Sonia Chadwick
 D, Ministry of Works*

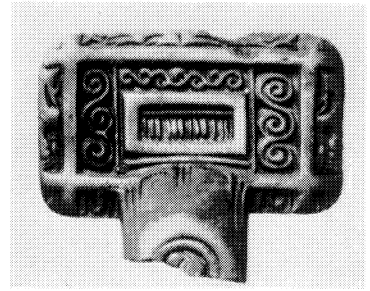
PLATE V



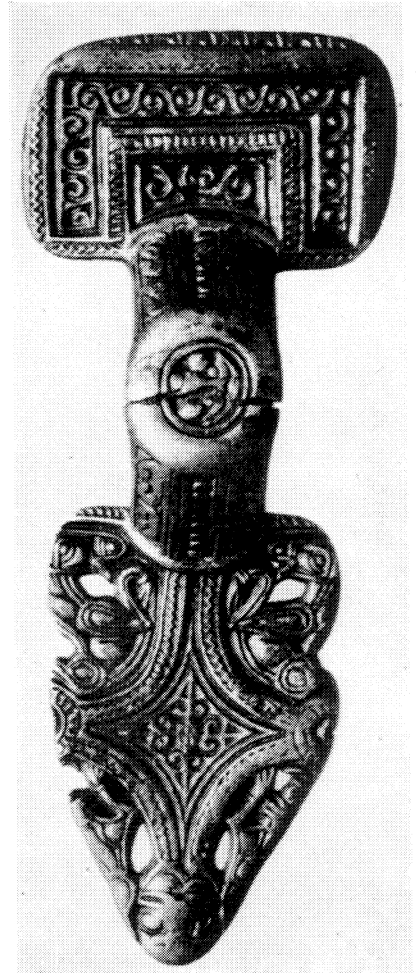
A



B



C



E

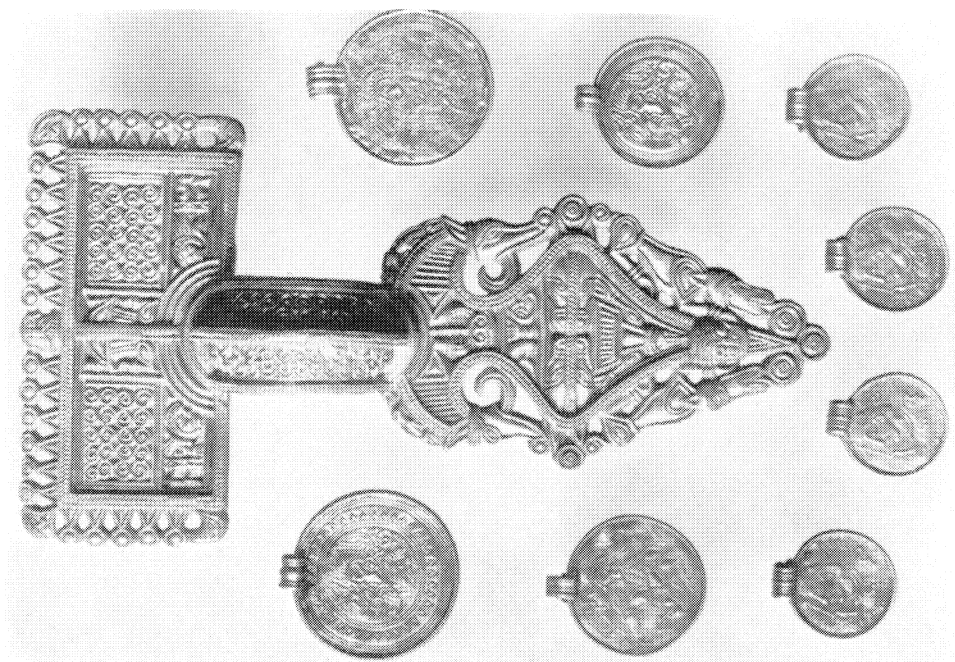


D

SQUARE-HEADED BROOCHES FROM ENGLAND AND THE CONTINENT

A. Martyr's Field, Canterbury, Kent (p. 46); B. Barrington, Cambs. (p. 46);
C. Agerskov, Jutland (p. 50 f.); D. Bifrons, Kent, grave 41 (pp. 48 ff.); E.
Engers, Hessen, Germany (pp. 45 ff.). Sc.: A-C, E, $\frac{1}{2}$; D, $\frac{3}{8}$

Plh.: A, British Museum (after *Antiq. J.* XXXVIII, by courtesy)
B, Ashmolean Museum (after *Med. Archaeol. I.*)
C, National Museum, Copenhagen (after *Med. Archaeol. I.*)
D, Maidstone Museum (after *Dark-Age Britain*, by courtesy)
E, Rheinisches Landesmuseum, Bonn (after *Med. Archaeol. I.*)

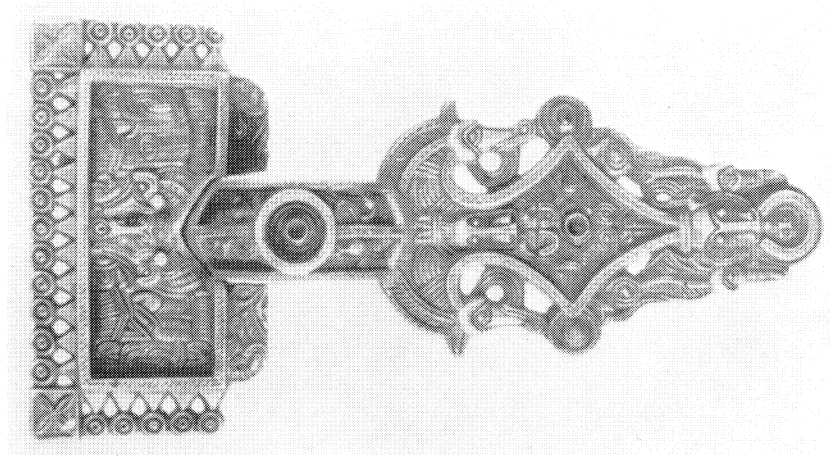


A

SQUARE-HEADED BROOCHES FROM DENMARK

A. Gummersmark, Sjaelland, with associated bracteates (pp. 51 ff.). Sc. $\frac{3}{8}$

B. Vedstrup, Sjaelland (pp. 51 ff.). Sc. $\frac{3}{4}$



B

Phot. National Museum, Copenhagen



ORNAMENTS FROM HANGING-BOWLS (Sc. 1)

A-C. Bekesbourne, Kent (pp. 72 ff.)
 D, F, G. Whitby, E.R., Yorks. (pp. 76, 103)
 E. Londesborough collection (British Museum), prov. unknown (p. 76).

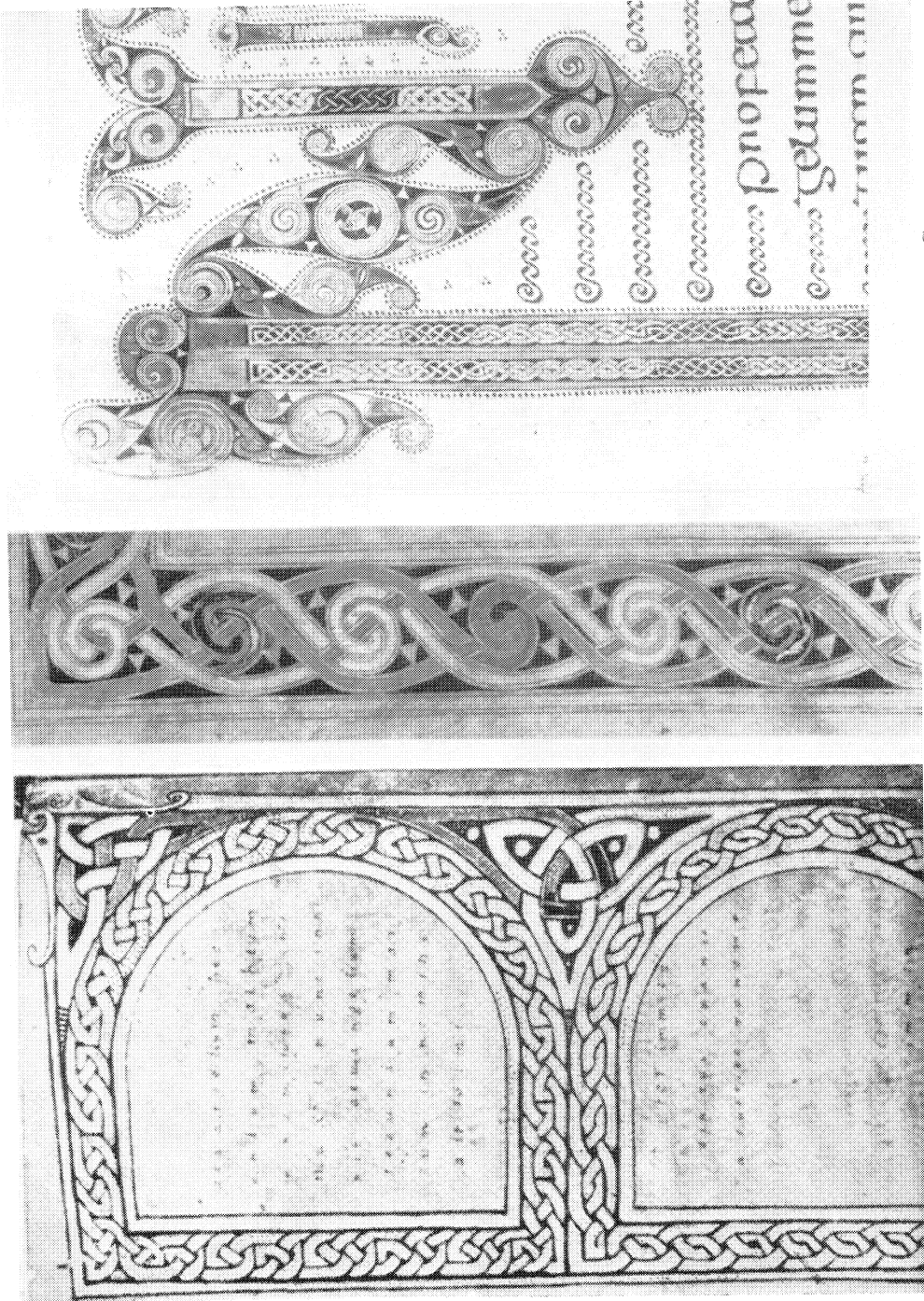
Phhs.: A-C, G. Haseloff
 D-G, British Museum

HASELOFF, BEKESBOURNE HANGING-BOWL



EXAMPLES OF INTERLACE ORNAMENT ON METALWORK (Sc. mainly $\frac{1}{2}$)

- A. Mounting, Lullingstone bowl, Kent (p. 80)
 B. Harness-mount, Faversham, Kent (p. 80)
 C. Mounting, Caenby, Lincs. (p. 81)
 D. Buckle (detail), Crundale, Kent (p. 81)
 E. Gold buckle (detail), Sutton Hoo, Suffolk (p. 81)
 F. Sword-pommel, Crundale, Kent (p. 81)
 G. Gold pendant, Wye Down, Kent (p. 81)
 H, J. Interior and exterior base-ornaments from bowl, Ormside, Westmorland (p. 82) *Phh.*: A-C, F-J., G. Haseloff
 D, E. *British Museum*



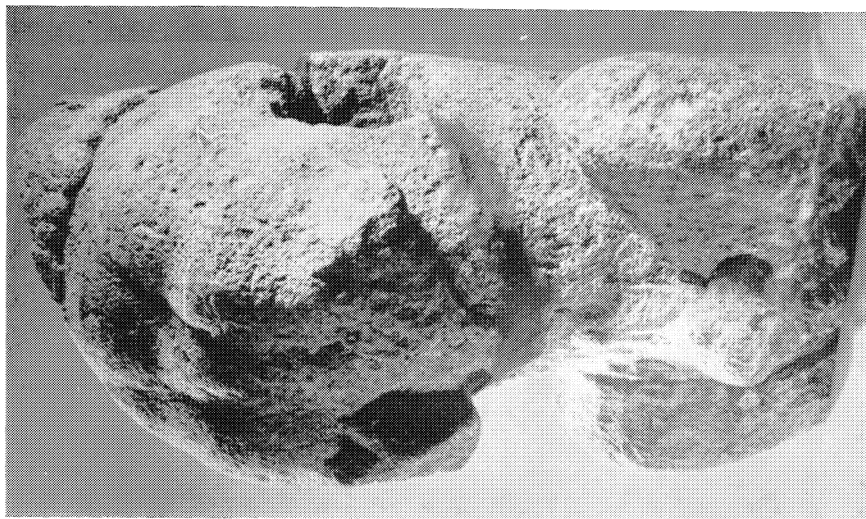
A B C
EXAMPLES OF INTERLACE ORNAMENT IN MANUSCRIPTS

A. Durham Gospel-fragment A II 10, fol. 36 (p. 84)
B. Book of Durrow, fol. 245 v (p. 94)
C. Book of Durrow, fol. 78 r (p. 86)

Phh.: A, *Alter Acta Archaeologica*, xviii, 161, fig. 20
B, C, G. Haseloff

HASELOFF, BEKESBOURNE HANGING-BOWL

MEDIEVAL ARCHAEOLOGY, VOL. II (1958)



A

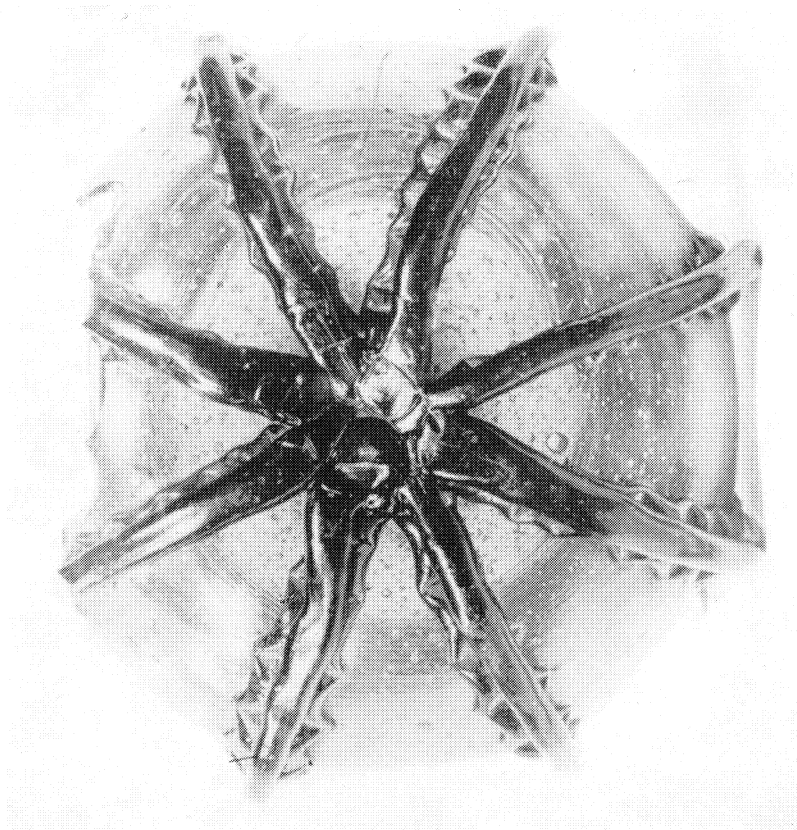
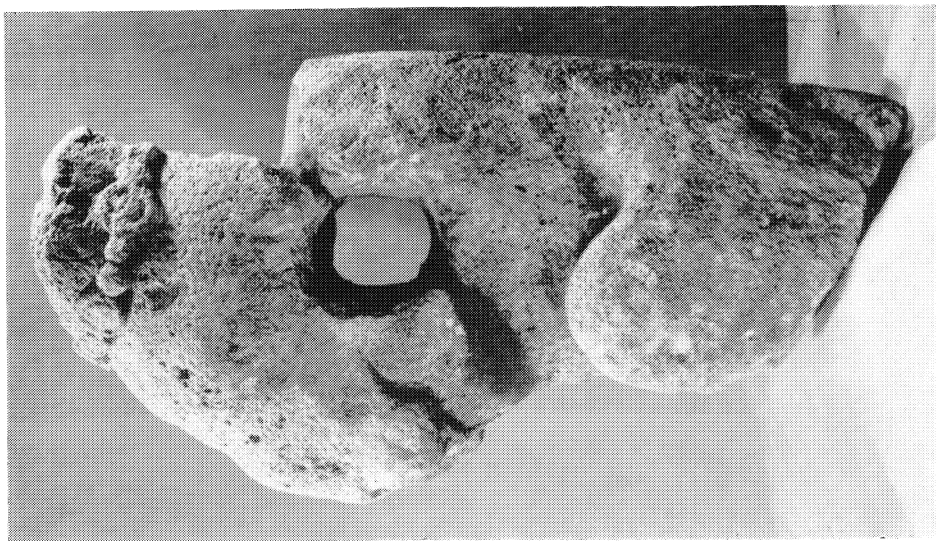
A. Stone finial in form of an animal from layer B (p. 111) Sc. $\frac{1}{4}$
B. Jar of blue glass from layer C (pp. 104 ff.). Sc. slightly over $\frac{1}{4}$



B

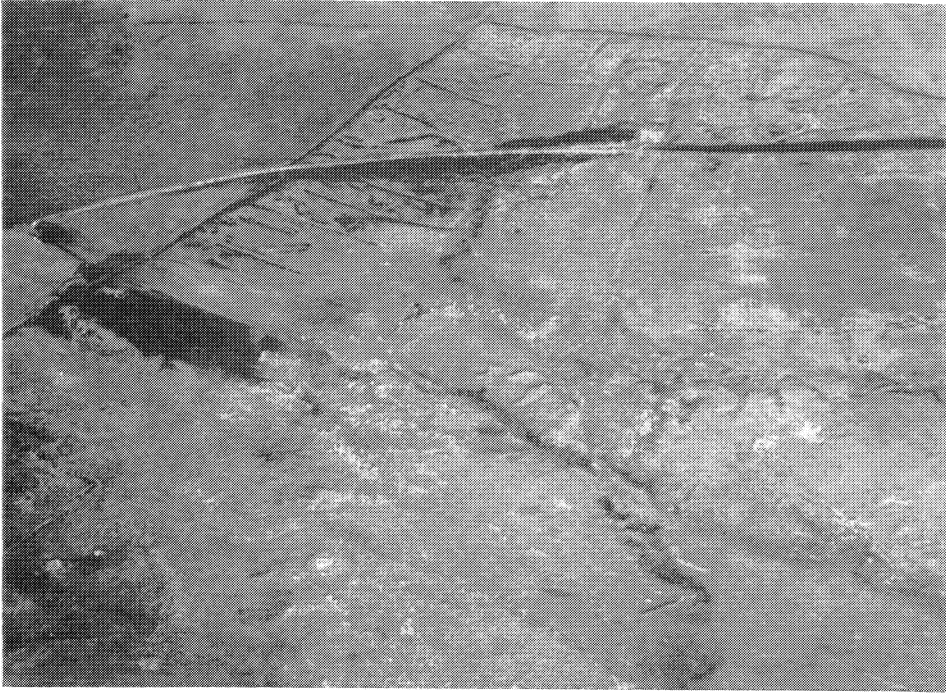
FINDS FROM THE TEMPLE WELL, PAGANS HILL, SOMERSET

Phot.: P. A. Rahitz



A. Side view of stone animal-finial from layer B (p. 111), showing beam-hole cut through body when figure was reused. Sc. $\frac{1}{4}$
B. End-on view of jar of blue glass from layer C (pp. 104 ff.). Sc. ϵ , $\frac{1}{4}$

Phot.: P. A. Rahtz



A



B

A. PADDOCKS AND HOUSE SITES, THIRTEENTH-CENTURY SETTLEMENT, TREWORTHA, ST. CLEER, CORNWALL (p. 116 f.)

View looking NW.: the track of the nineteenth-century railway crosses the site

B. BEERE, N. TAWTON, DEVON, FROM S. (pp. 112 ff.)

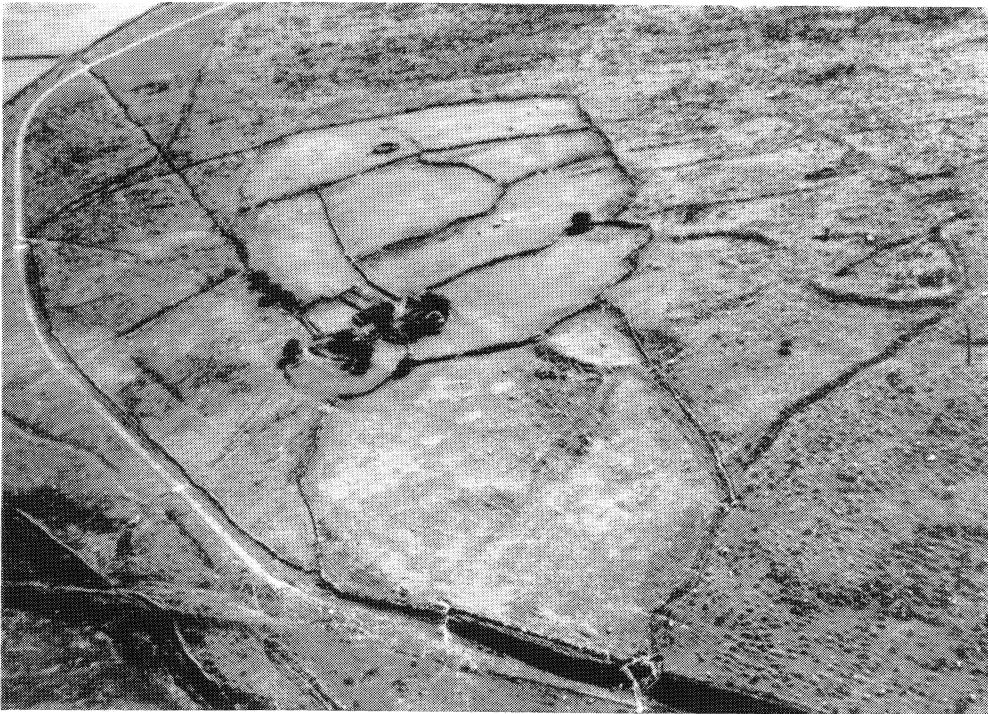
House I lies W. of centre in foreground, the earthwork lies NW. across the field. The farm is Great Beere

Phh.: J. K. S. St. Joseph. Crown Copyright Reserved

PLATE XIII



A



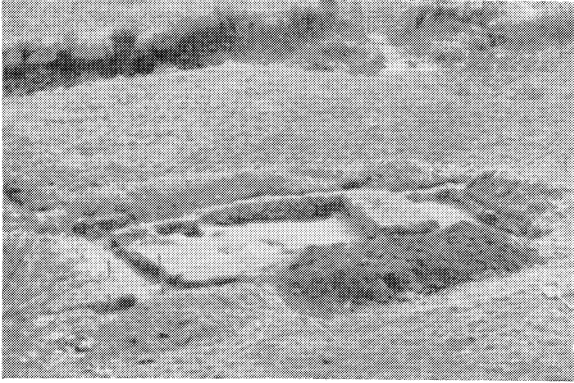
B

A. NORTHWARD EXTENSION OF PLATE XII, A

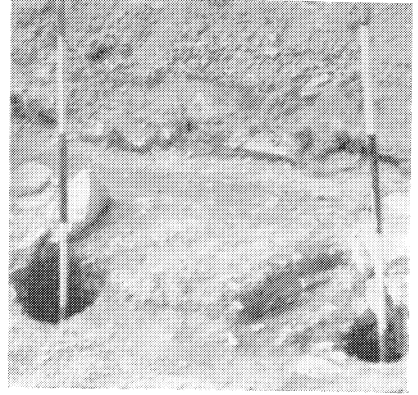
The railway was never finished and ended on the moor when the money ran out

B. SETTLEMENT-SITE WITH PADDOCKS, SIBLYBACK MOOR, E. CORNWALL (p. 117)

Phh.: J. K. S. St. Joseph, Crown Copyright Reserved



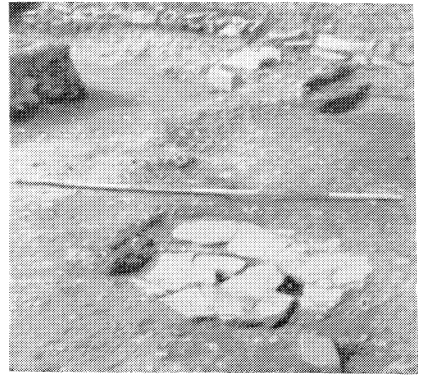
A



B



C



D



E

THIRTEENTH-CENTURY SETTLEMENT AT BEERE,
N. TAWTON, DEVON

- A. General view of house I, from N. (pp. 117-23)
- B. N. entrance, house I (p. 119)
- C. Corn-drying kiln II (pp. 123-24)
- D. Central hearth, house I (p. 119)
- E. S. entrance, house I (p. 119)

Phh.: E. M. Jope



A



B

A. UPPER AVON VALLEY LOOKING TOWARDS DEAN MOOR, DEVON (p. 141)

The homestead is situated below the arrow

B. HOMESTEAD, DEAN MOOR, FROM N. (p. 142)

*Phh.: A. Fox
Block A after Trans. Devon. Assoc., LXXXIX, by courtesy*

PLATE XVI



A

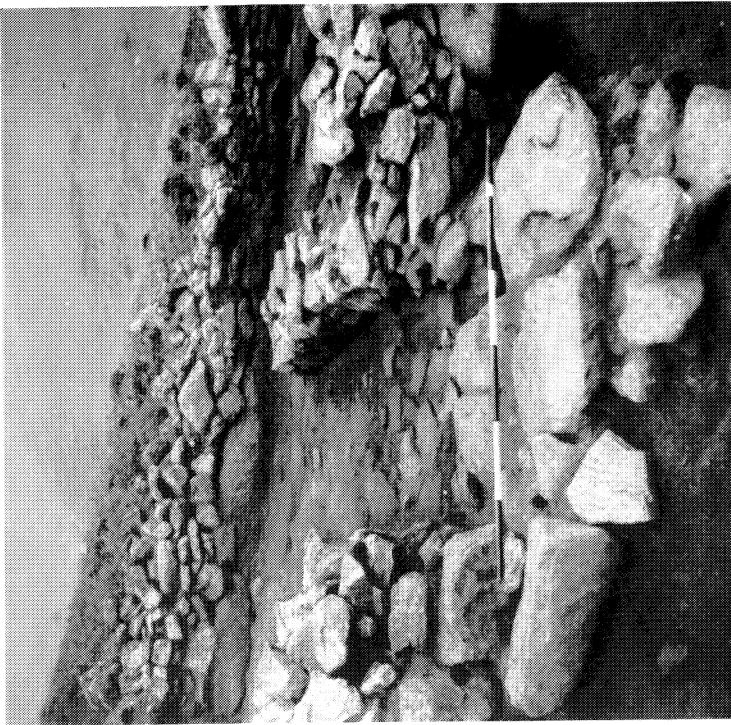


B

A. HOMESTEAD, DEAN MOOR, FROM SE. (p. 144)
The byre is in the foreground

B. HOUSE, DEAN MOOR, FROM S. (p. 144)
The ranging-pole on the right marks the doorway from the yard; late-bronze-age huts in the background

Phh.: A. Fox

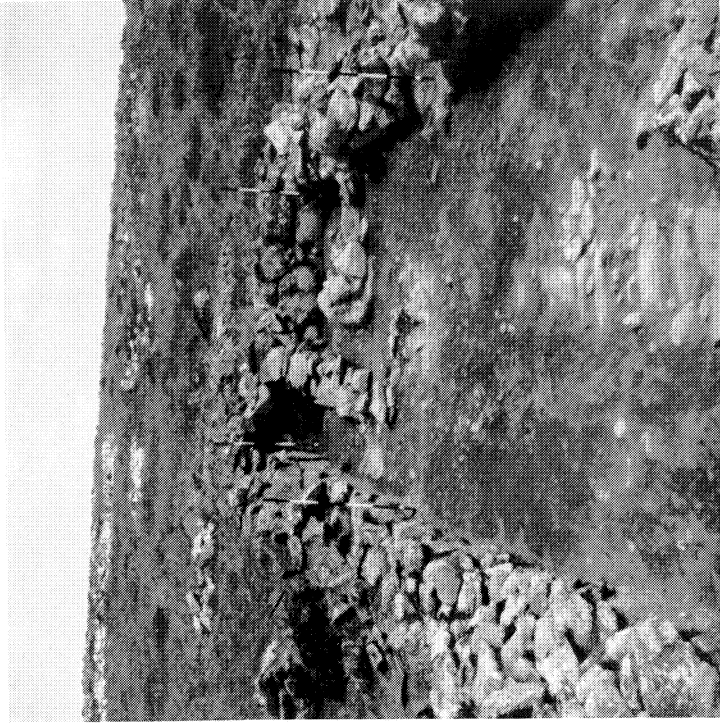


A

A. ENTRANCE TO HOUSE, DEAN MOOR, FROM YARD (p. 144)

B. INTERIOR OF BYRE, DEAN MOOR (p. 146)

Two ranging-poles mark the lateral doorways: in foreground, cover-stones of drain

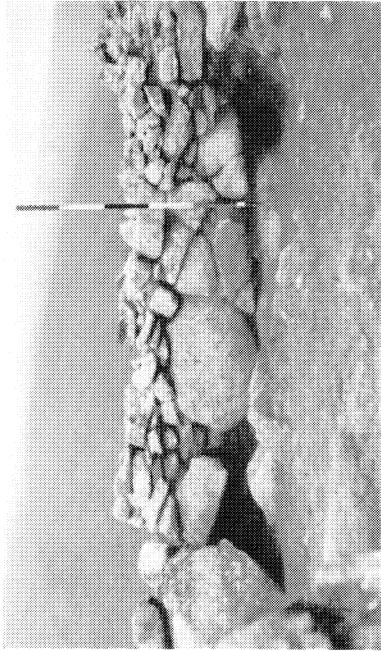


B

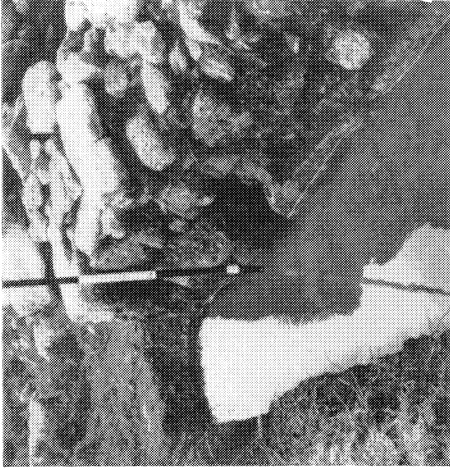
Phot. A. Fox

FOX, HOMESTEAD ON DEAN MOOR, S. DEVON

PLATE XVIII



A



B



C



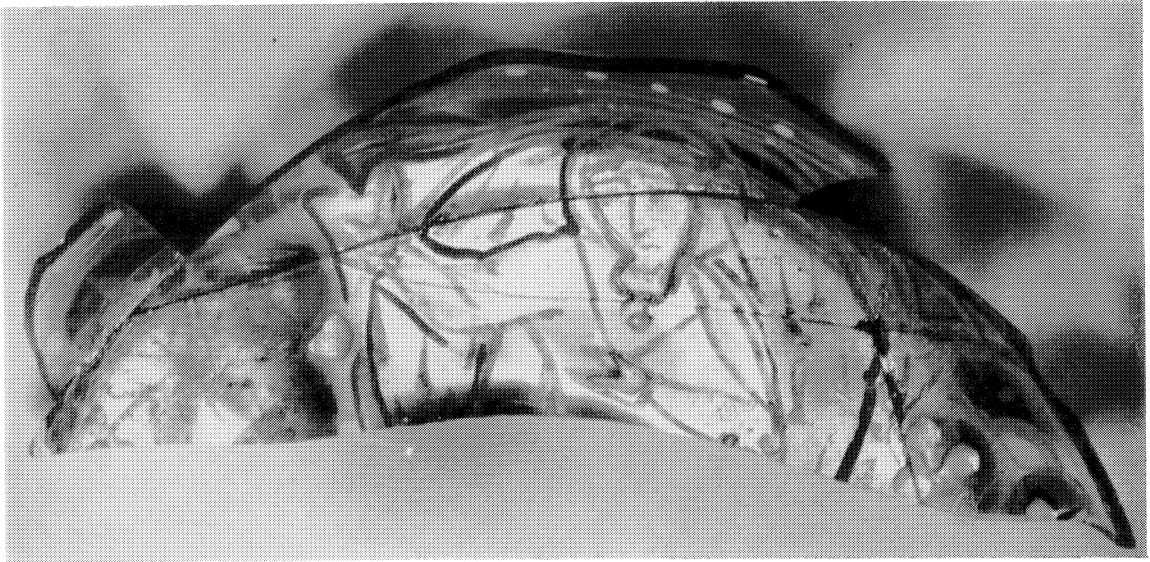
D

- A. DRY-STONE WALLING, SE. CORNER OF HOUSE, DEAN MOOR, FACING YARD (p. 144)
B. DRAIN THROUGH S. WALL OF HOUSE, IN ACTION AFTER THUNDERSTORM (p. 145)
C. DRAIN AT LOWER END OF BYRE, DEAN MOOR (p. 147)
D. WALL OF PEN AT LOWER END OF BYRE, DEAN MOOR, OVERLYING COVER-SLABS OF DRAIN (p. 147)

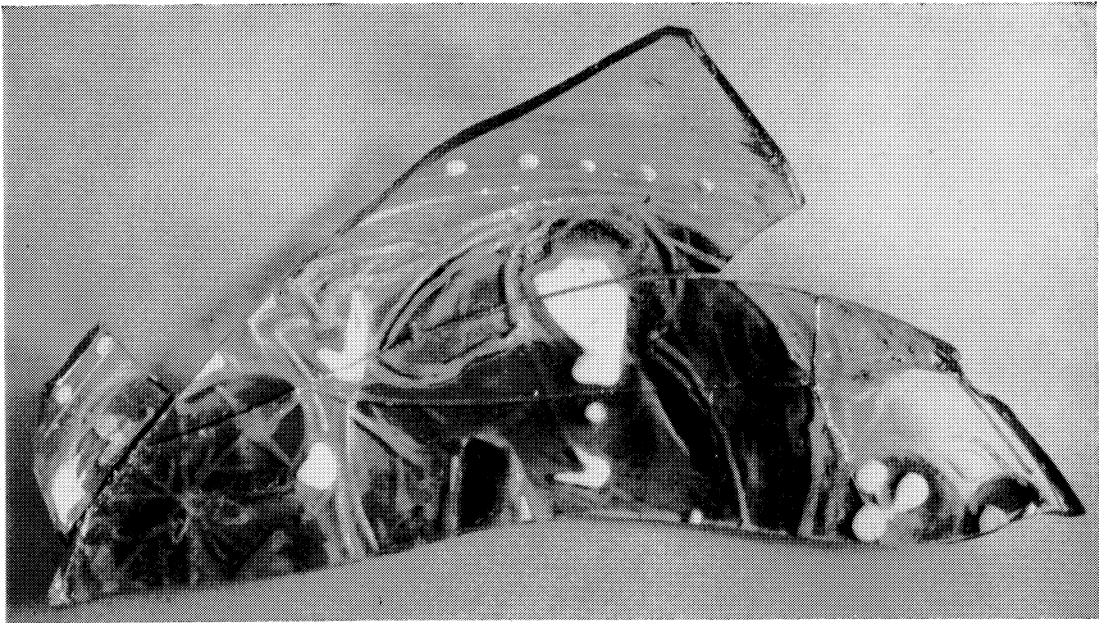
A cover-slab has been removed beside the ranging-pole, to show depth

Phot.: A. Fox

PLATE XIX



A



B

A, B. FRAGMENT OF 13TH-CENTURY ENAMELLED GLASS BOWL FOUND IN CHEAPSIDE, LONDON. Sc. 3
Photograph A is lit to show the two kinds of outlines referred to in the text (p. 174)

Phh.: Guildhall Museum