

PLATE I



A

B

D

C

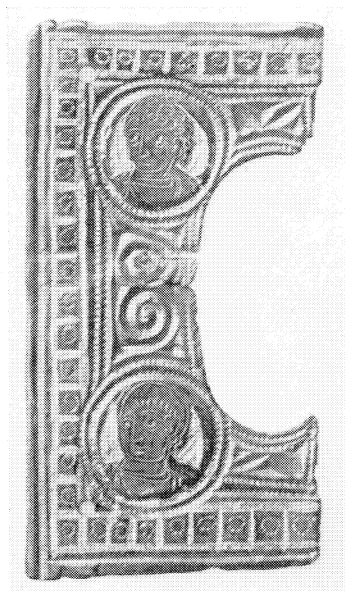
BUCKLE AND BELT-FITTINGS FROM KENT  
A. Buckle (type III A, 8, pp. 10 ff., 60); B and C. Disc-attachments (type VI, 12-13, p. 66); D. Attachment-plate (type VII, 5, p. 68). Sc.  $\frac{1}{2}$   
*Publ. : British Museum*  
HAWKES and DUNNING, SOLDIERS AND SETTLERS

MEDIEVAL ARCHAEOLOGY, VOL. V (1961)

PLATE II



A



B

BUCKLES

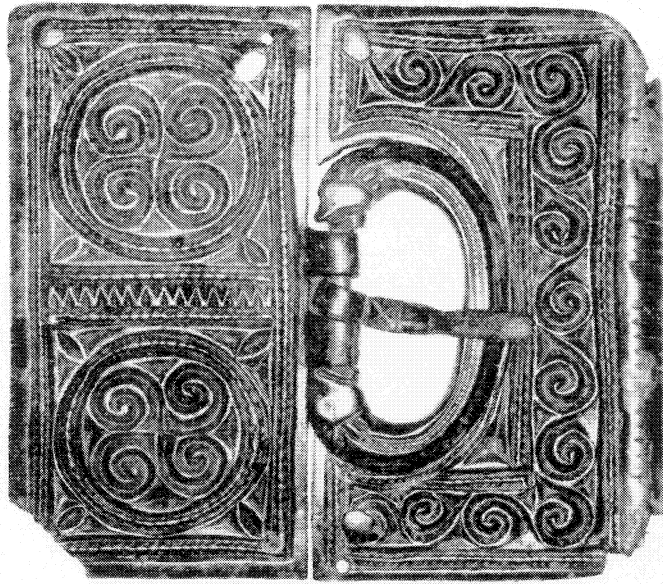
A. From Smithfield, London (type iv A, 3, p. 62);

B. From Snodland, Kent (type iv A, 2, p. 62). Sc.  $\frac{1}{4}$

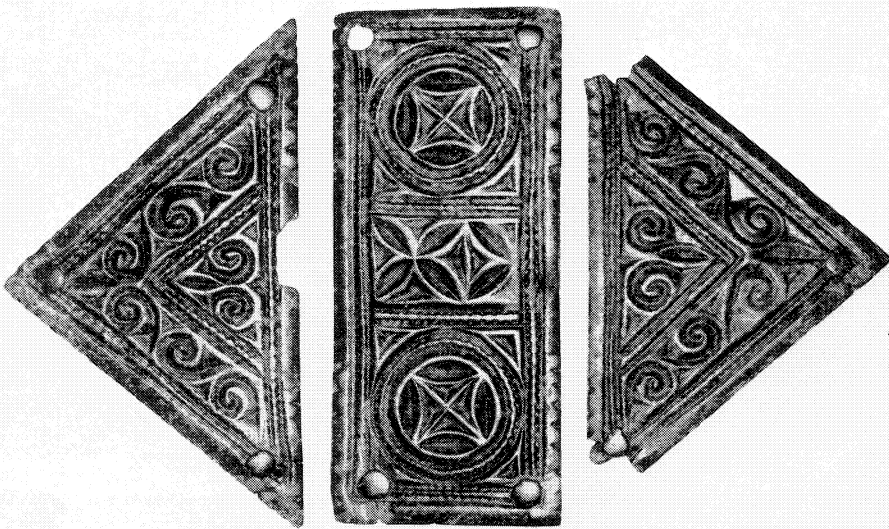
*Ph. : British Museum*



PLATE III



A



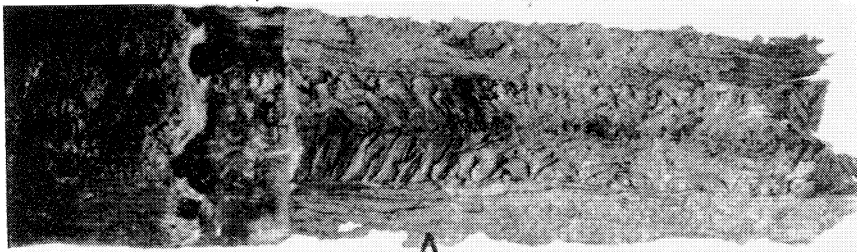
B-D

BUCKLE AND BELT-PLATES, PERHAPS FROM KENT

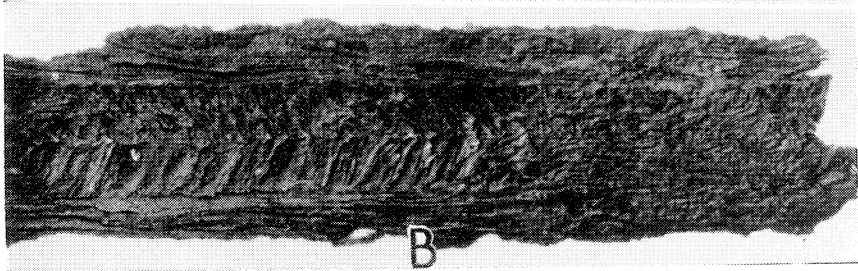
A. Buckle (type IV A, 4a, p. 62); B-D. Belt-plates (type IV A, 4b-d, p. 62). Sc.  $\frac{1}{4}$

*Phl.: Liverpool Public Museums*

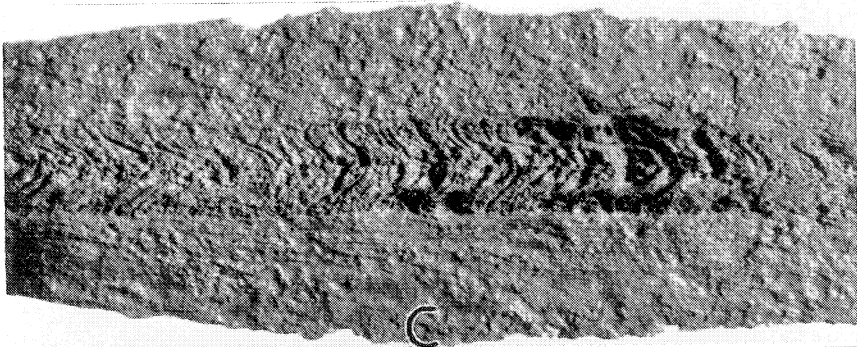
X



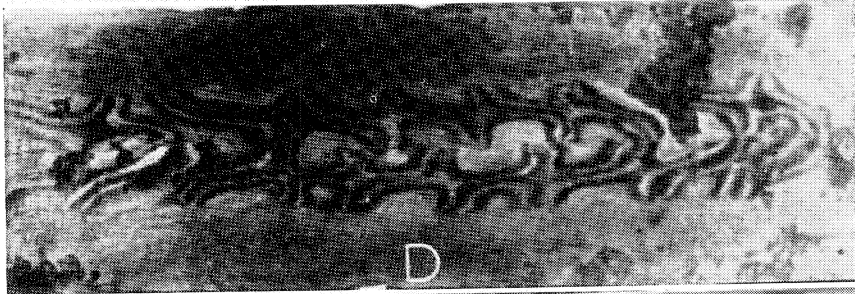
A



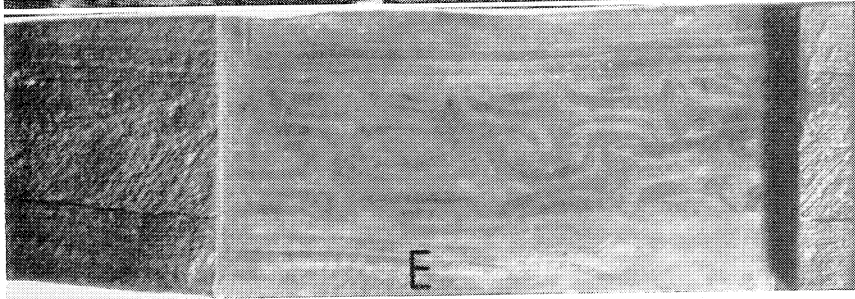
B



C



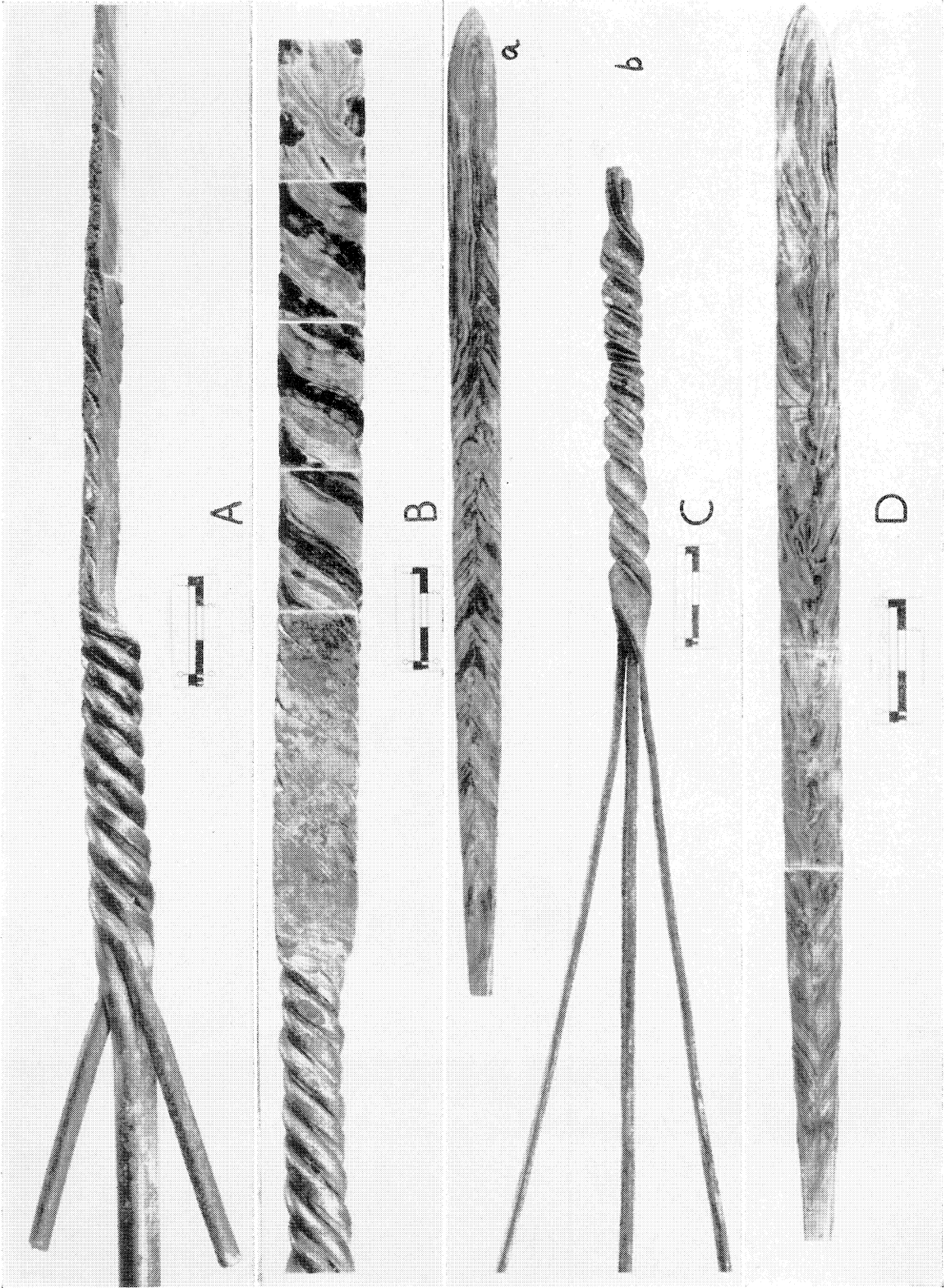
D



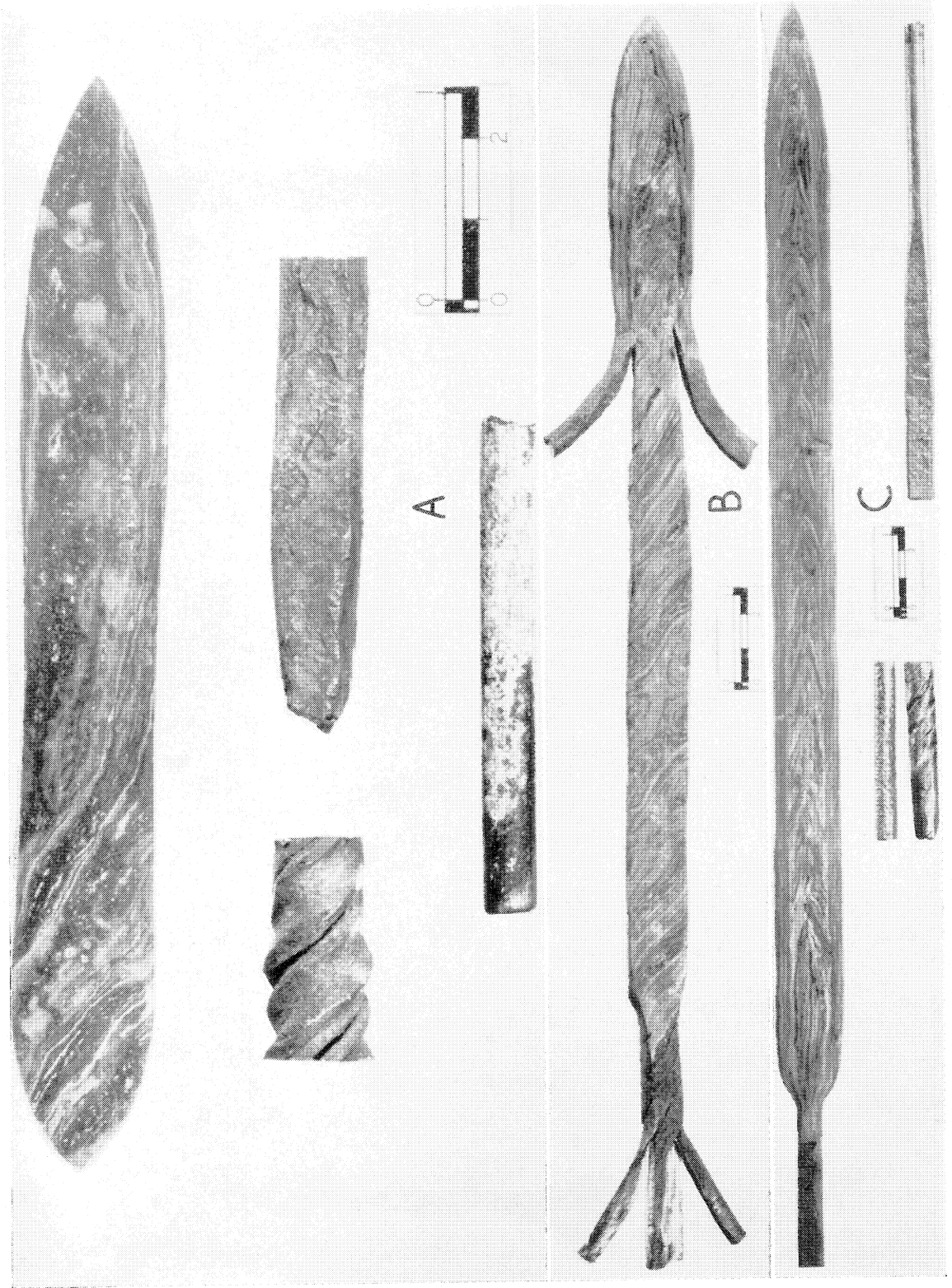
E

PORTIONS OF BLADES, SHOWING DETAILS OF PATTERN-WELDING  
(pp. 72, 84, 87) (for explanation see p. 93)

*Phh.: A-C, E, Ministry of Works,  
Crown Copyright Reserved  
D, A. France-Lanord*



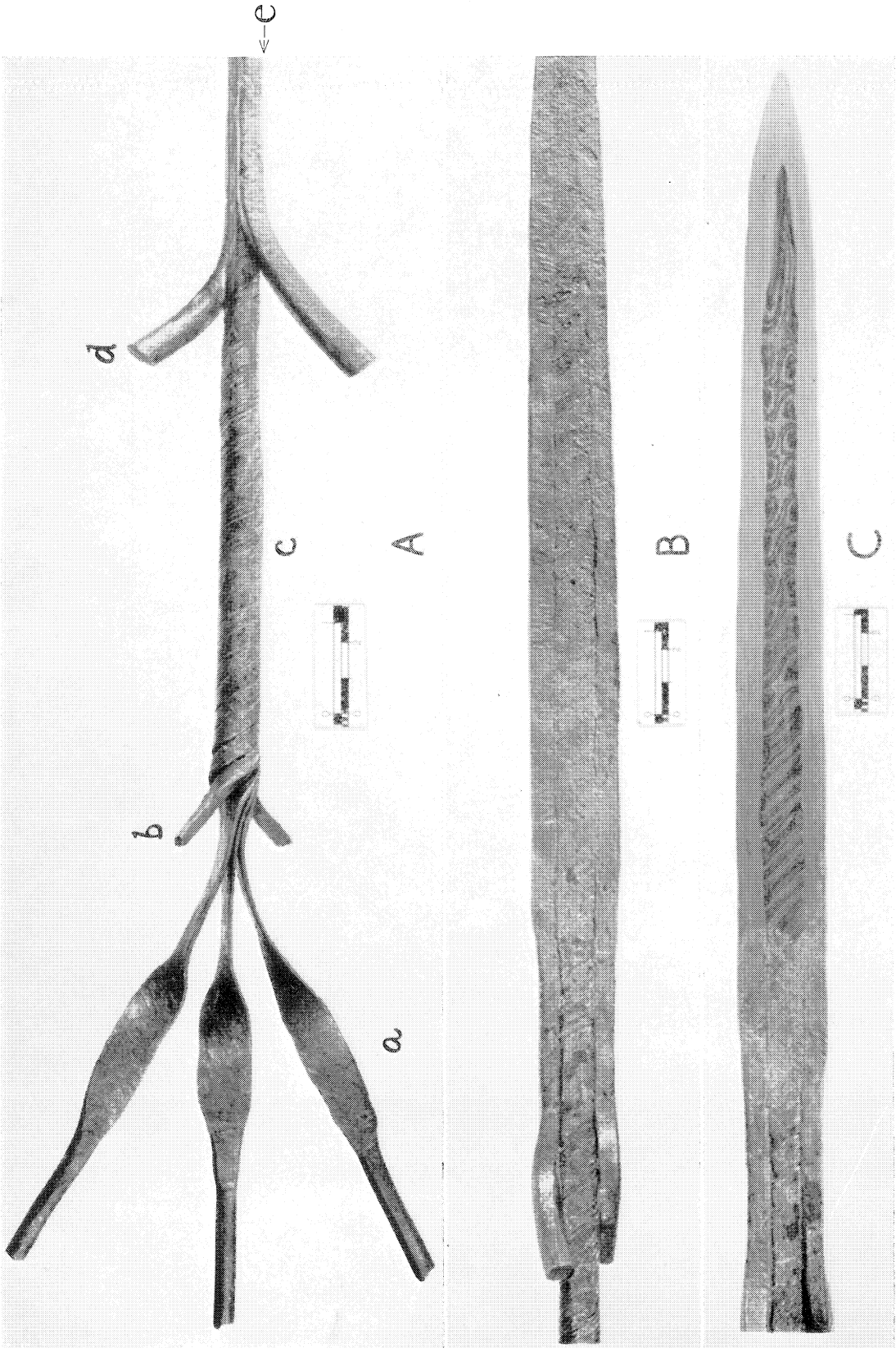
THE SECOND (A, B) AND FOURTH (C, D) EXPERIMENTS (pp. 74, 76)  
(for explanation see p. 93)



THE THIRD (A), FIFTH (B), AND SIXTH (C) EXPERIMENTS (pp. 75, 77)

(for explanation see p. 93)

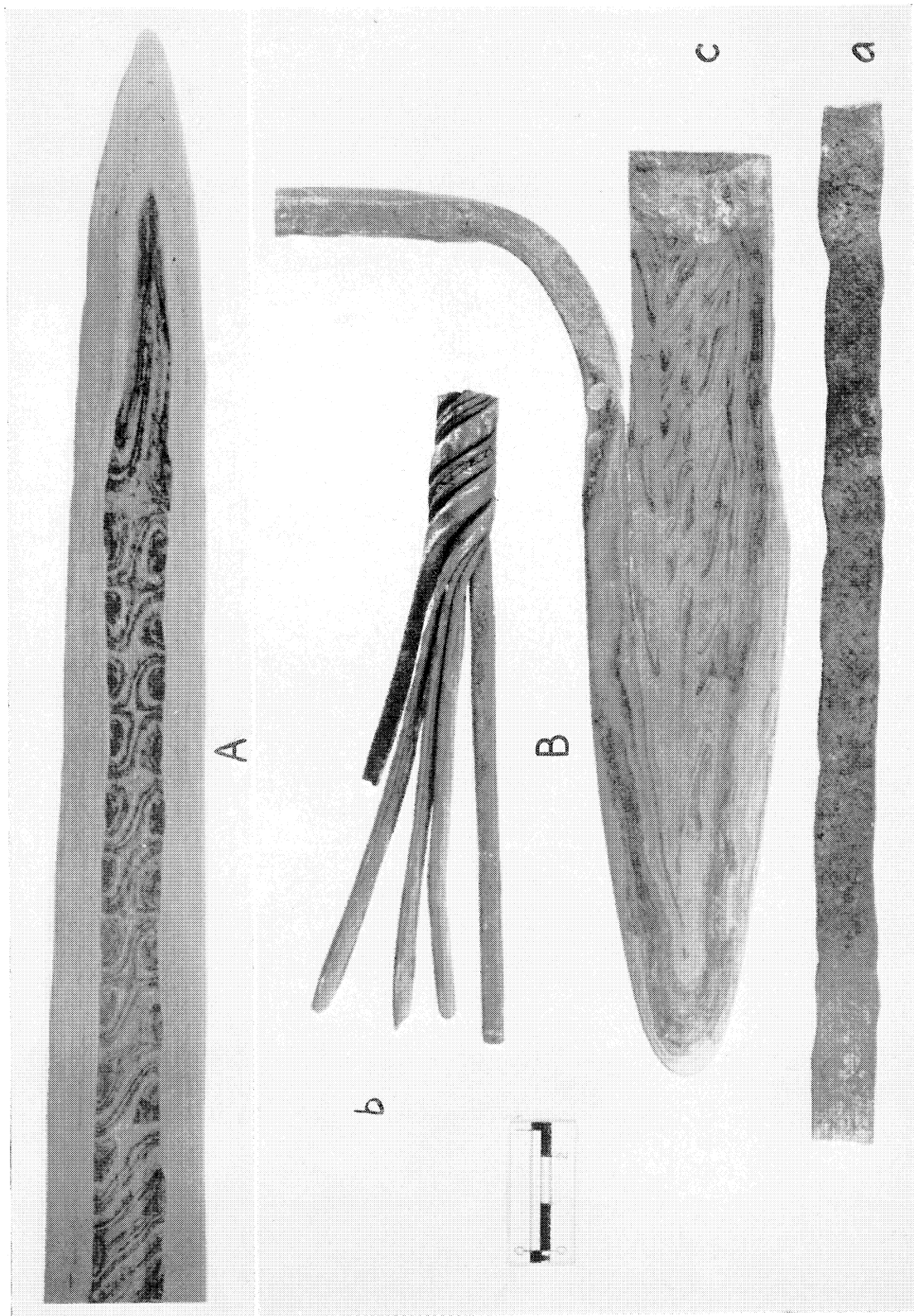




THE SEVENTH EXPERIMENT (p. 78)  
(for explanation see p. 93)

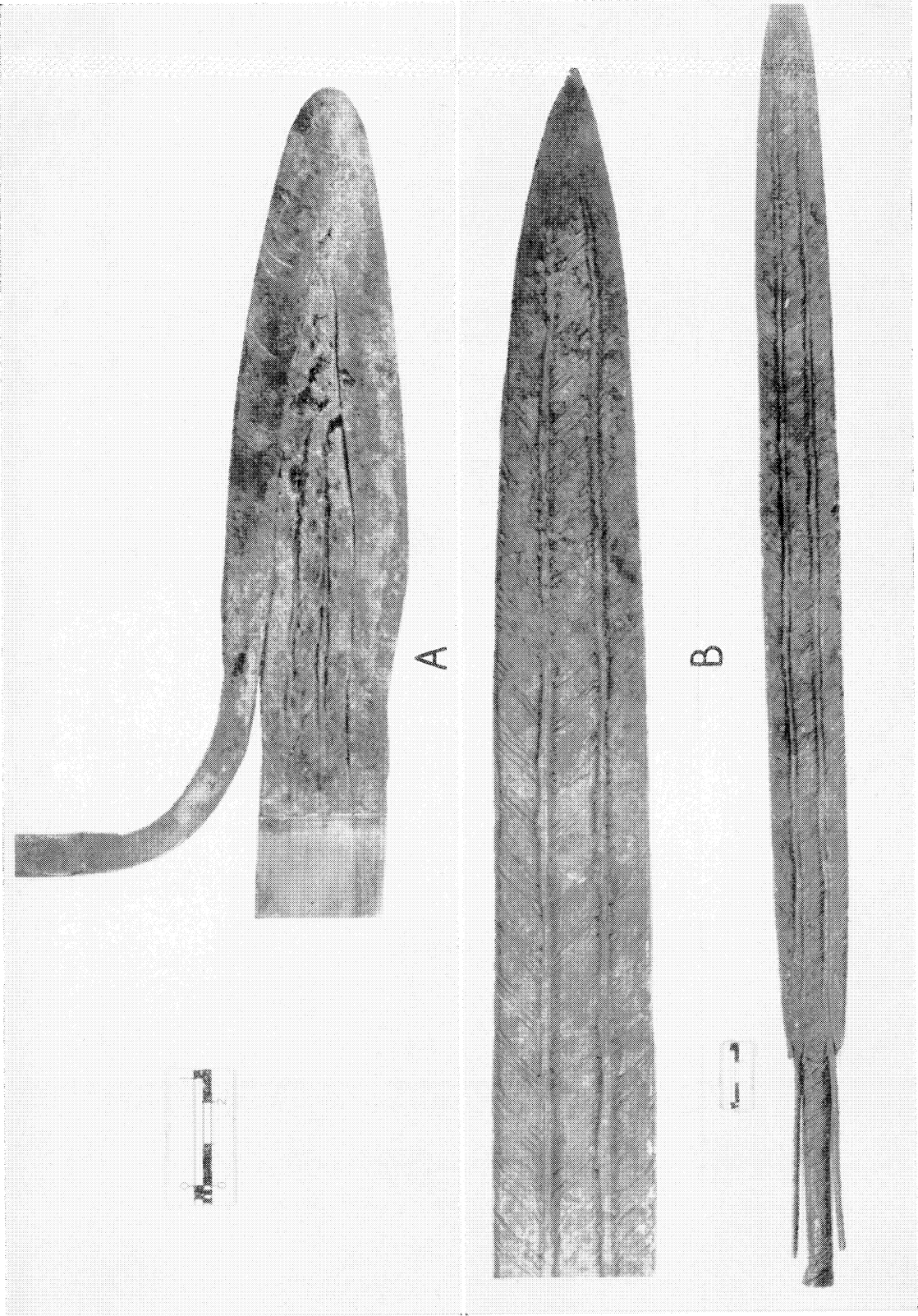
*Ph. : Ministry of Works, Crown Copyright Reserved*  
ANSTEE and BIEK, PATTERN-WELDING





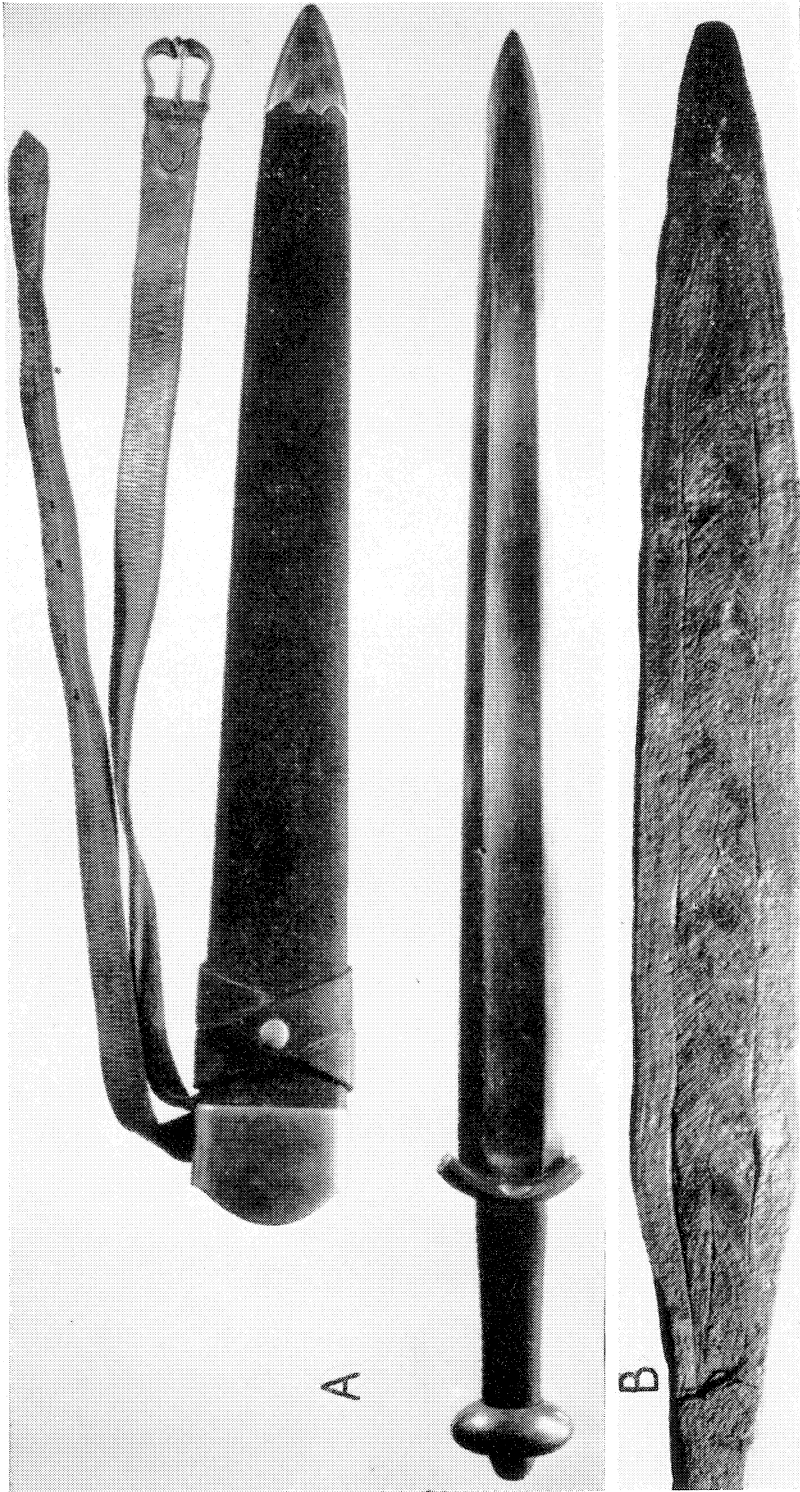
THE SEVENTH (A) AND EIGHTH (B) EXPERIMENTS (pp. 78, 80)  
(for explanation see p. 93)

*Ph.:* Ministry of Works, Crown Copyright Reserved  
ANSTEE and BIEK, PATTERN-WELDING



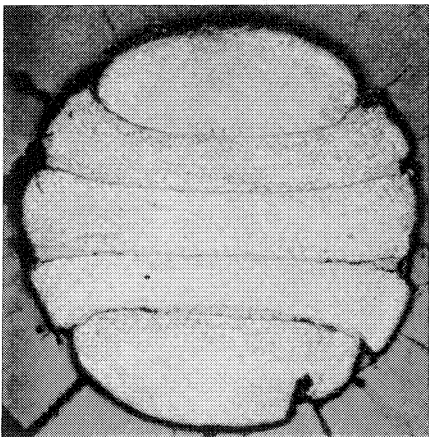
THE EIGHTH EXPERIMENT (p. 80)  
(for explanation see p. 93)

Phh.: Ministry of Works, Crown Copyright Reserved  
ANSTEE and BIEK, PATTERN-WELDING



THE EIGHTH (A) AND NINTH EXPERIMENTS (pp. 80, 84). Sc. A, 1; B, 3  
(for explanation see p. 93)

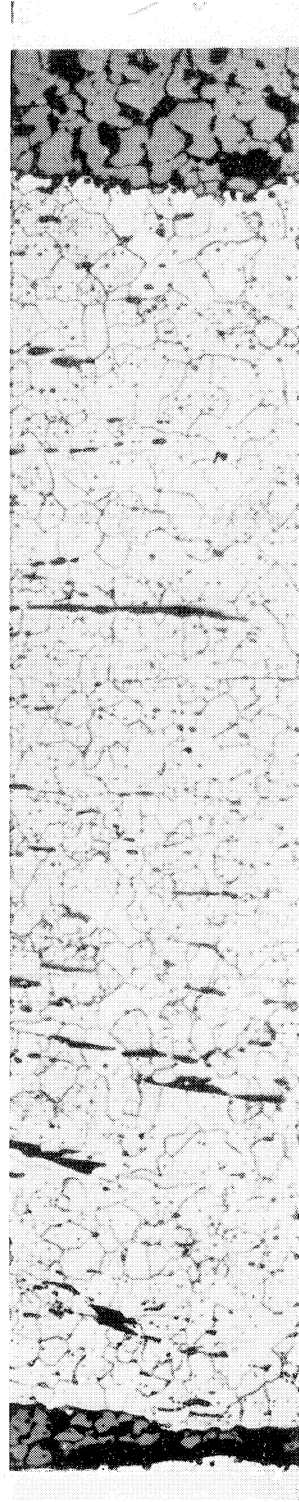
*Ph. : Ministry of Works, Crown Copyright Reserved*



A



C

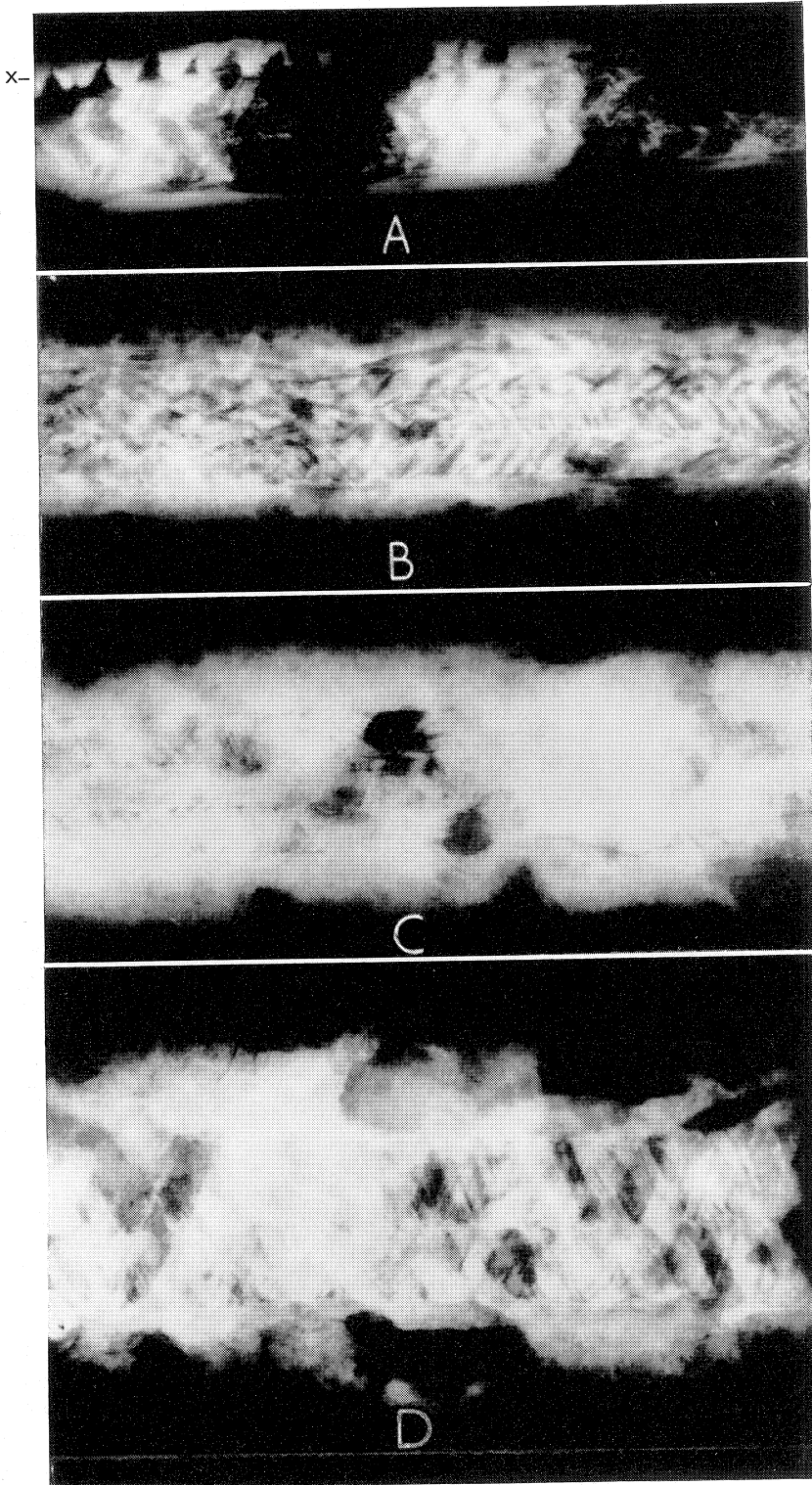


B

DETAILS OF COMPOSITE ROD (A, B) AND EIGHTH EXPERIMENT (C) (pp. 84, 80)  
(for explanation see p. 93)

*Plat. : A, B, British Welding Research Association  
C, Messrs. Kodak, Ltd.*





RADIOGRAPHS OF BLADES (Table I)  
(for explanation see p. 93)



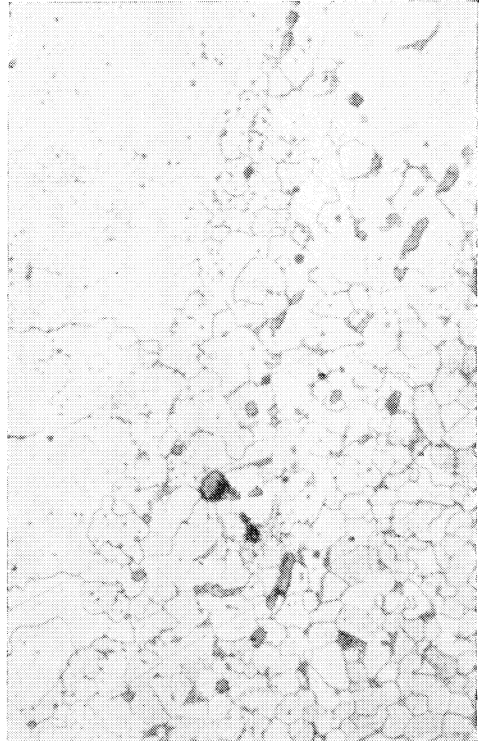
PLATE XIII



× 50

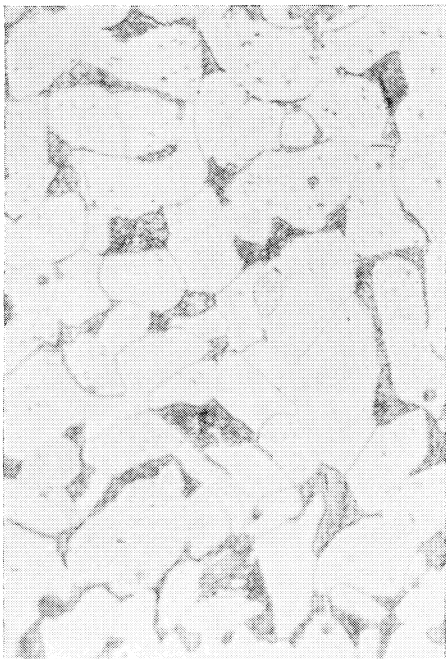
A

Structure types 1 and 2



B

× 150



× 500

C

Structure type 3



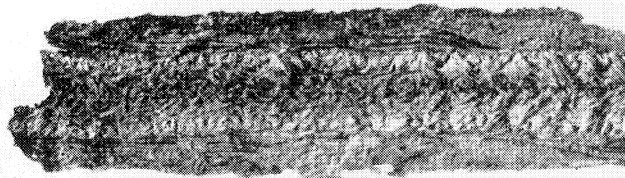
D

× 1500

PHOTOMICROGRAPHS OF THE PALACE OF WESTMINSTER SWORD (pp. 72, 85)  
(for explanation see p. 93)

*Phl.: National Physical Laboratory, Crown Copyright Reserved*

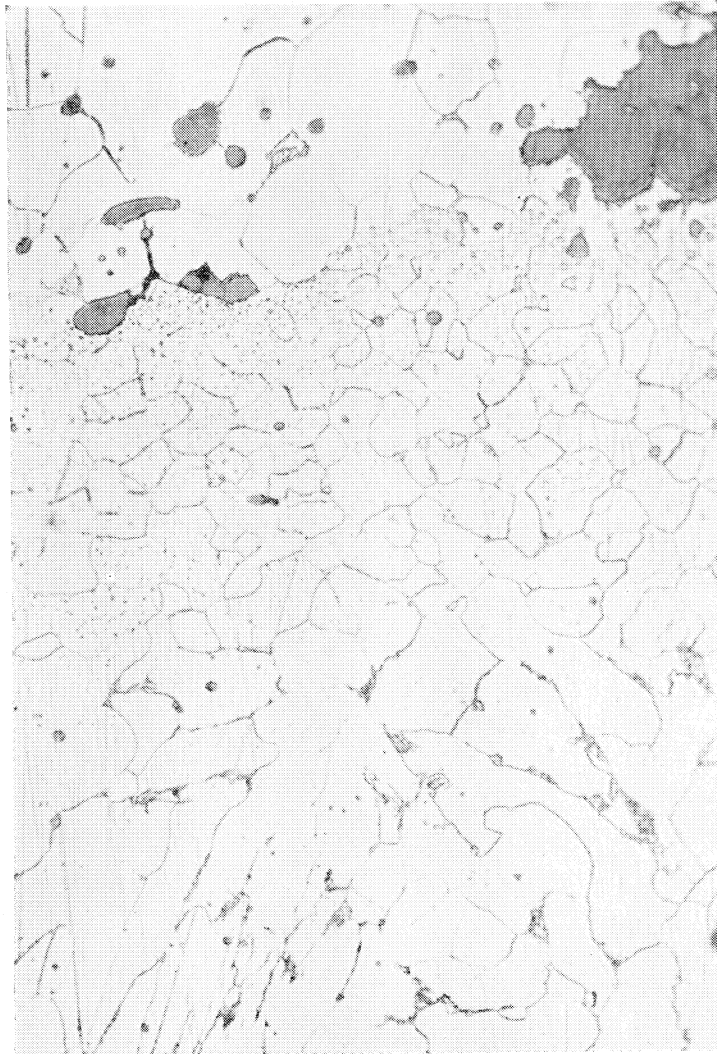
PLATE XIV



b

A

a



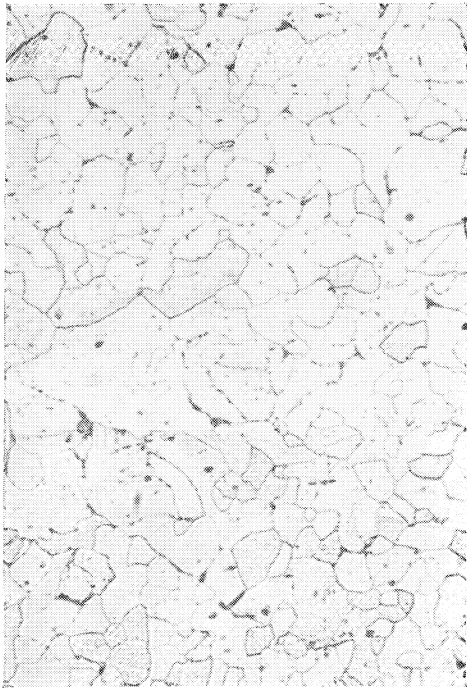
B

× 500

PALACE OF WESTMINSTER SWORD (A) AND SEVENTH EXPERIMENT (B) (pp. 72, 85; 78)  
(for explanation see p. 93)

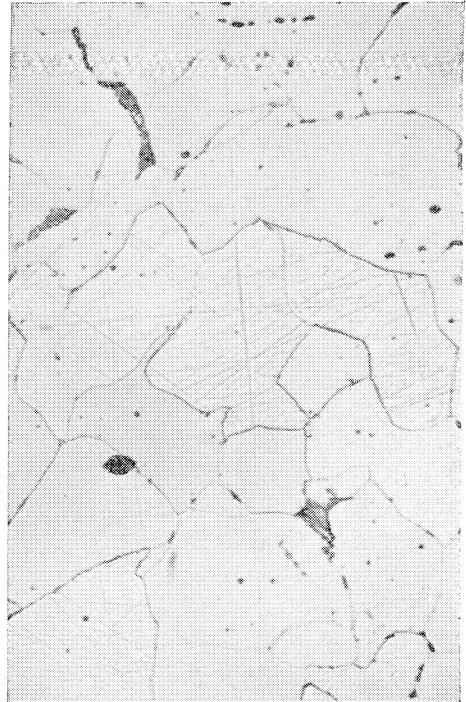
*Phl.: National Physical Laboratory, Crown Copyright Reserved*

PLATE XV



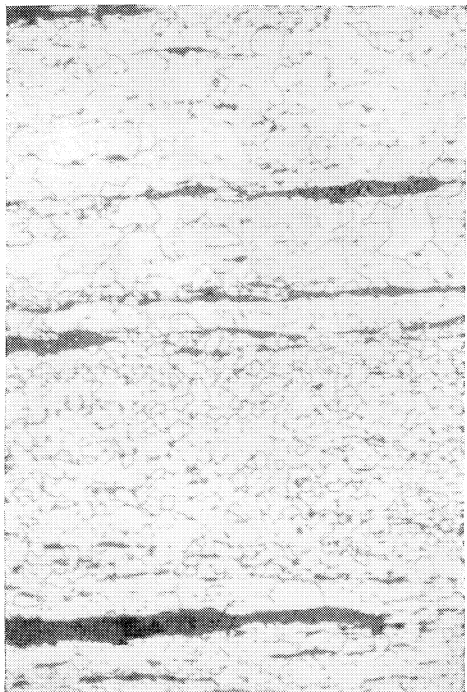
× 150

A



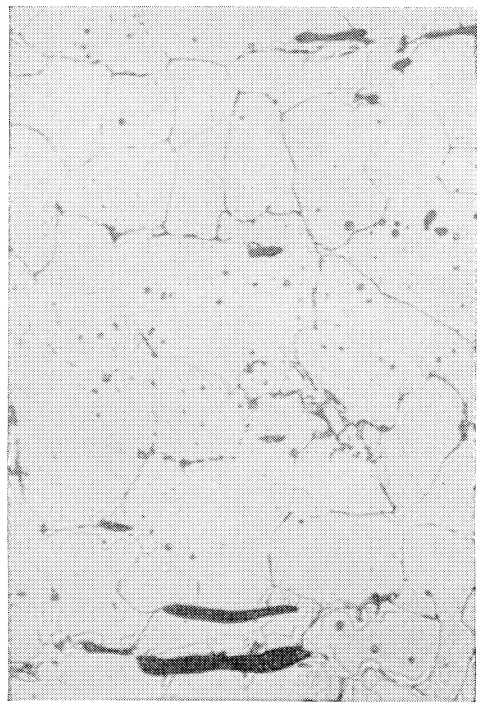
B

× 500



× 150

C



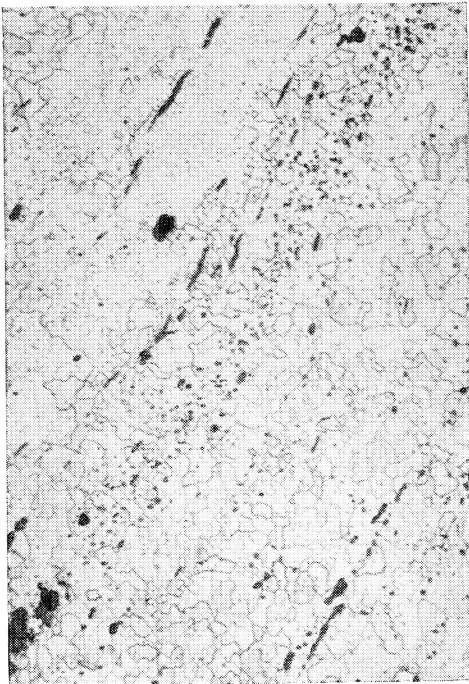
D

× 500

THE SEVENTH EXPERIMENT (p. 78)  
(for explanation see p. 93)

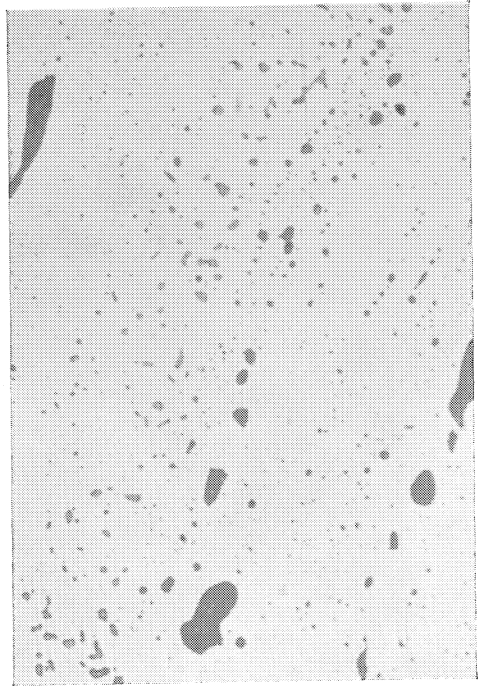
*Ph. : National Physical Laboratory, Crown Copyright Reserved*

PLATE XVI



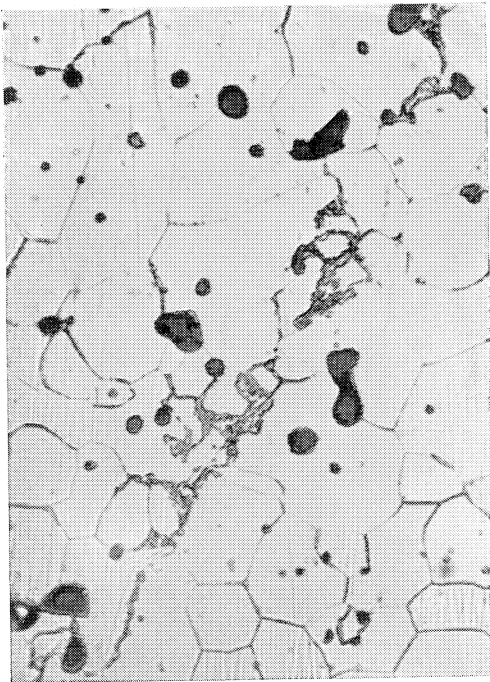
×50

A



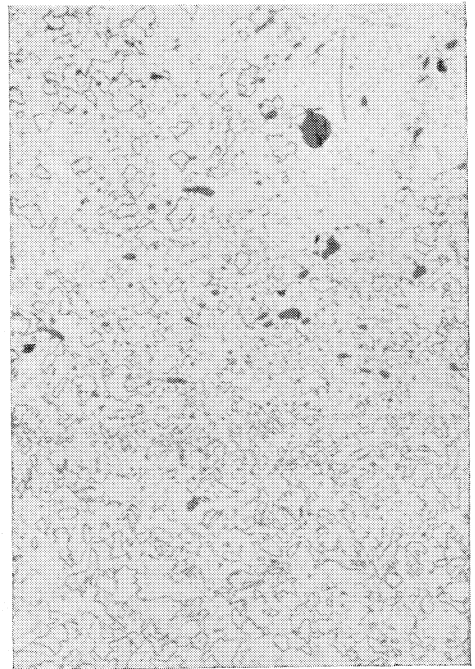
B

×500



×500

C



D

×50

THE SEVENTH EXPERIMENT (p. 78)  
(for explanation see p. 93)

*Phh.: National Physical Laboratory, Crown Copyright Reserved*



PLATE XVII



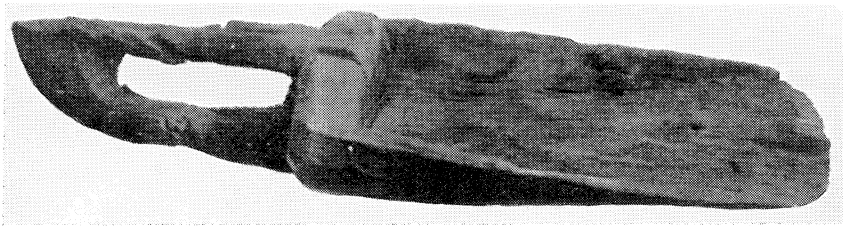
EXCAVATIONS AT ANTWERP, BELGIUM, BESAENHUIS SITE

Narrow street with wooden paving between middle house (left) and aisled house with wooden flooring (right), looking E. (p. 128)

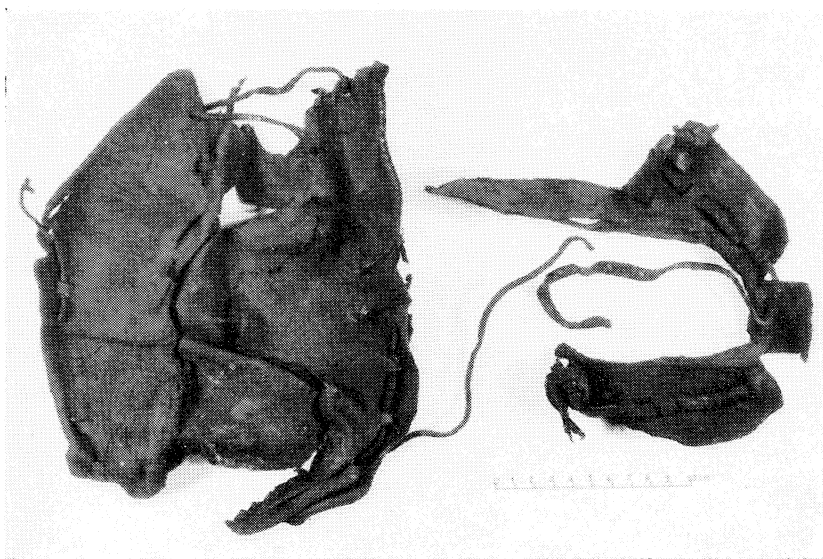




A



B

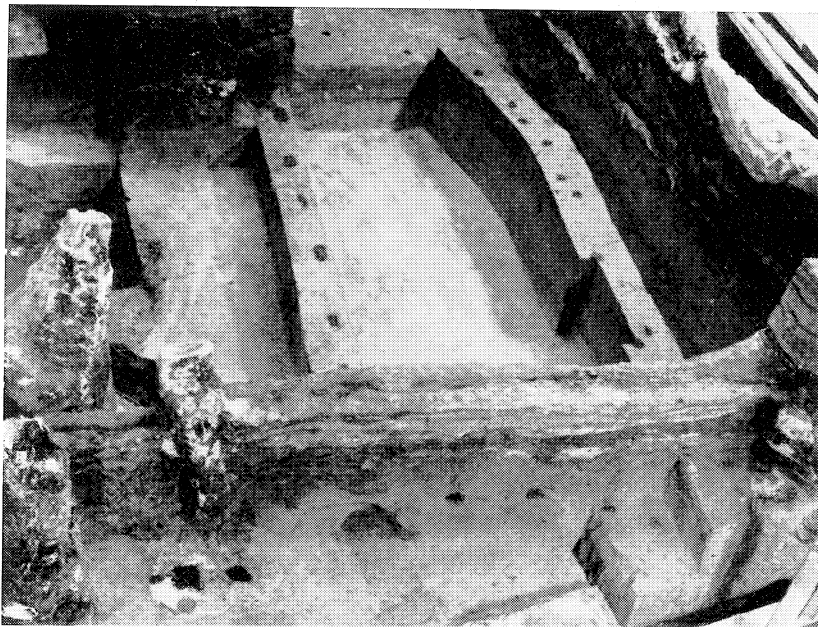


C

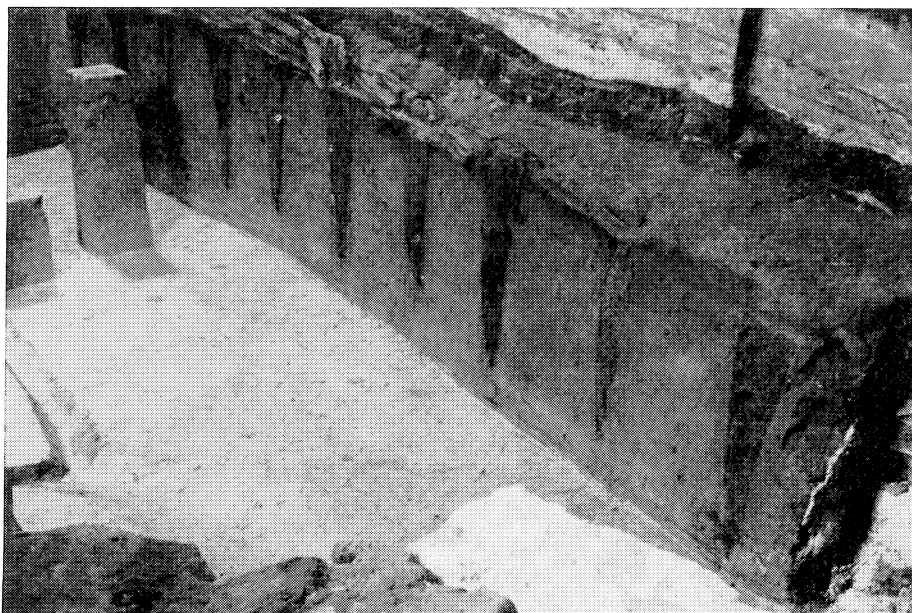
EXCAVATIONS AT ANTWERP, BELGIUM, BESAENHUIS SITE

- A. Background, right, wattle, *c.* 1.40 m. high, at NE. corner of earliest aisled house. Foreground, left, post of outside wall of later rebuilding; right, wooden floor of earliest house. View looking NE. (p. 130)
- B. Oakwood scoop from *c.* 3.50 m. below street level. 10th century (p. 127). *Sc c*  $\frac{1}{4}$
- C. Portions of leather shoes and laces. Many such finds from the site belong to *c.* 850-1225 (p. 127). *Sc.*  $\frac{1}{4}$

PLATE XIX



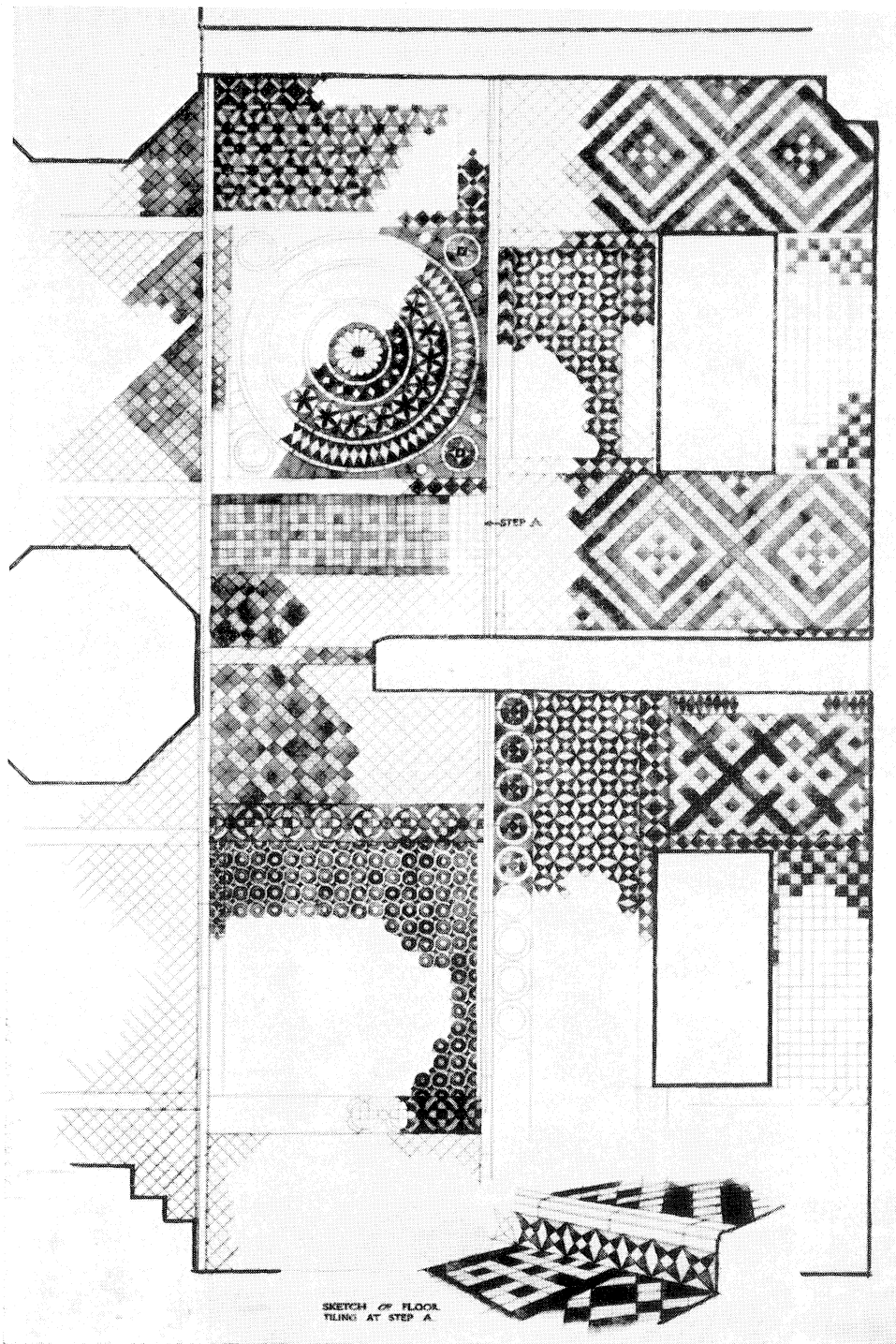
A



B

EXCAVATIONS AT ANTWERP, BELGIUM, SITE OF ST. WALPURGIS'S CHURCH

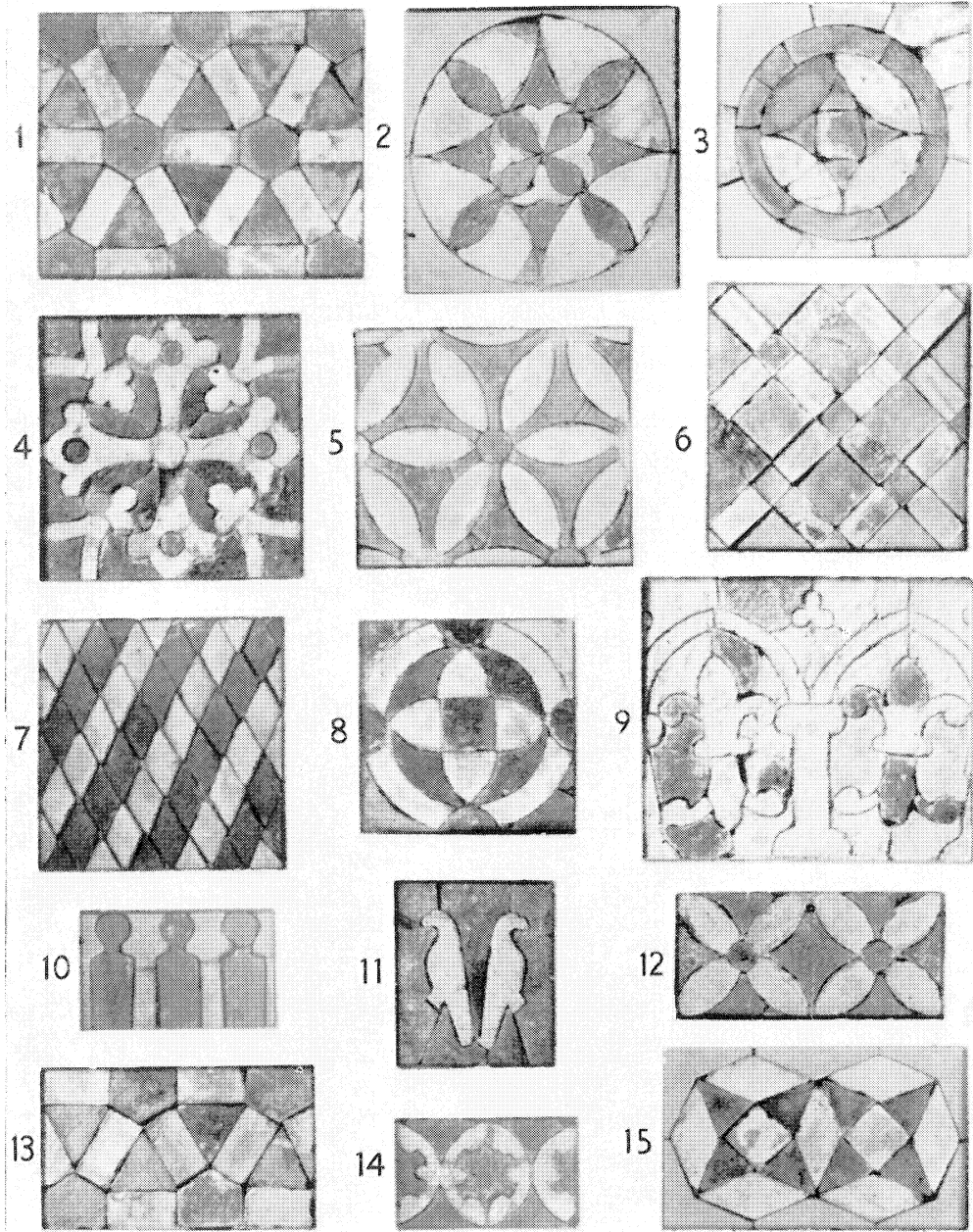
- A. Traces of decayed wooden construction in successive building levels under stone foundations of nave, cutting no. 4, looking N. Foreground, left, three completely decayed posts, the cavities of which have been filled with plaster to preserve their form (p. 132)
- B. Partially preserved wattle-work with posts of wooden house under stone foundations of nave, cutting no. 5, looking SW. (p. 132)



BYLAND ABBEY, N.R. YORKSHIRE  
Plan by J. S. Richardson of tile-mosaic pavement (pp. 137 f., 140)

*Ph.: Crown Copyright Reserved*

PLATE XXI



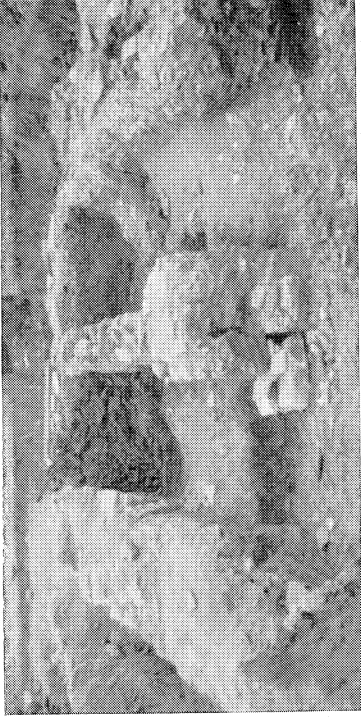
NORTH GRANGE, MEAUX, E.R. YORKSHIRE  
Various designs of mosaic tiles (pp. 135, 140)

*Ph. : G. K. Beulah*





A



B



C



D

NORTH GRANGE, MEAUX, E.R. YORKSHIRE: ROOF-TILE KILN

- A. General view from W., after excavation (p. 143)
- B. The furnace, from the stoke-hole (pp. 140, 143)
- C. N. furnace-chamber from NE., showing arched retaining wall, back wall of furnace and top of back ramp (p. 149)
- D. Furnace from SW., showing fracture in spine wall and unclinkered courses of lower furnace walls at base of spine and back walls (p. 146)

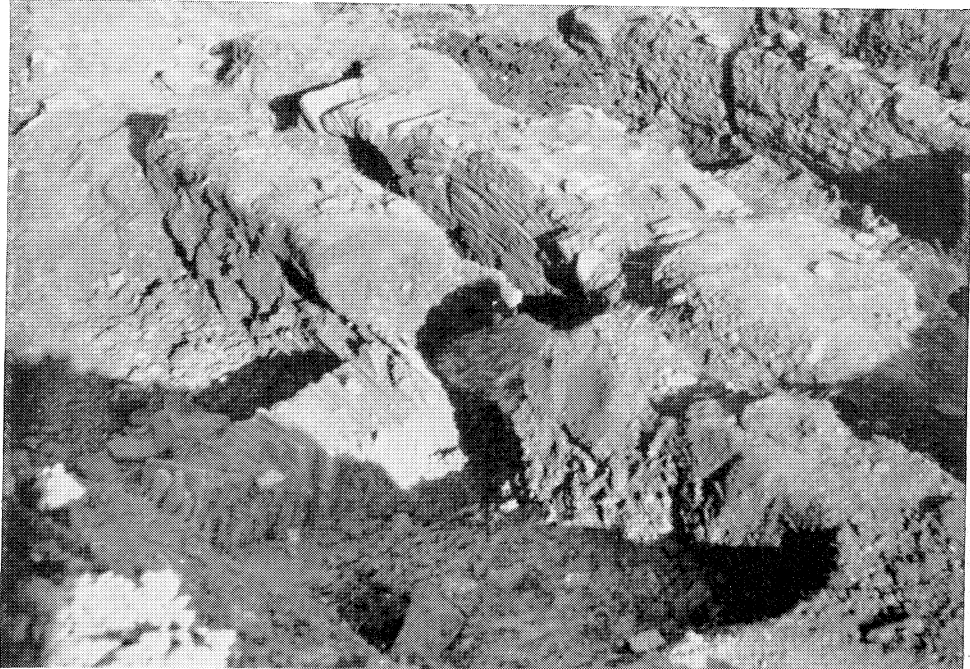
Phot.: E. S. Eames



PLATE XXIII



A



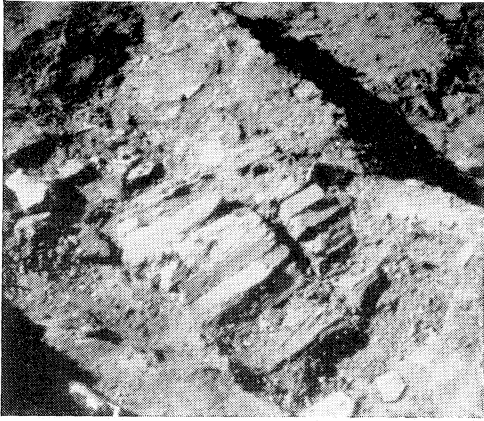
B

NORTH GRANGE, MEAUX, E.R. YORKSHIRE: ROOF-TILE KILN

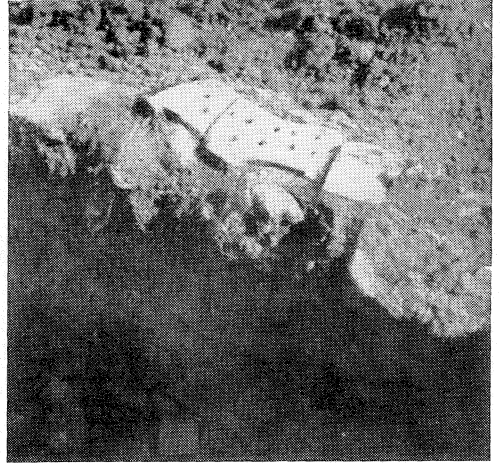
- A. Rear of furnace-chambers from N., showing detail of N. arched retaining wall (p. 150)
- B. N. retaining structure from NW., showing stack of roof-tiles buttressing the stone wall (p. 150)

*Ph. : E. S. Eames*

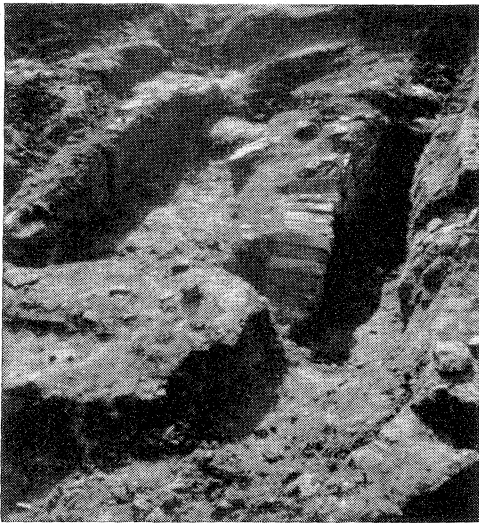
PLATE XXIV



A



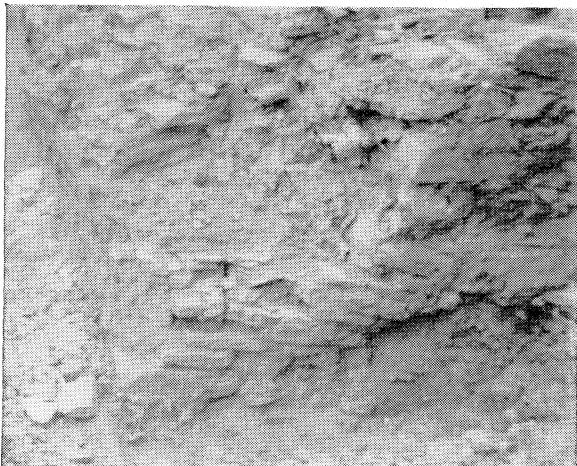
B



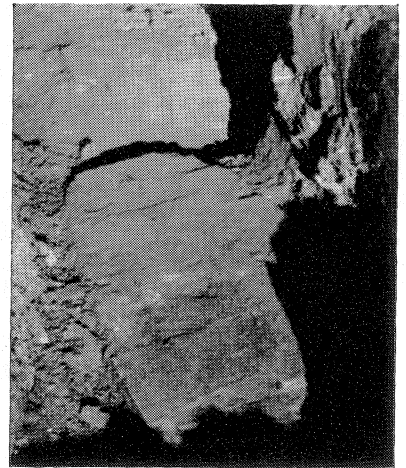
C



D



E

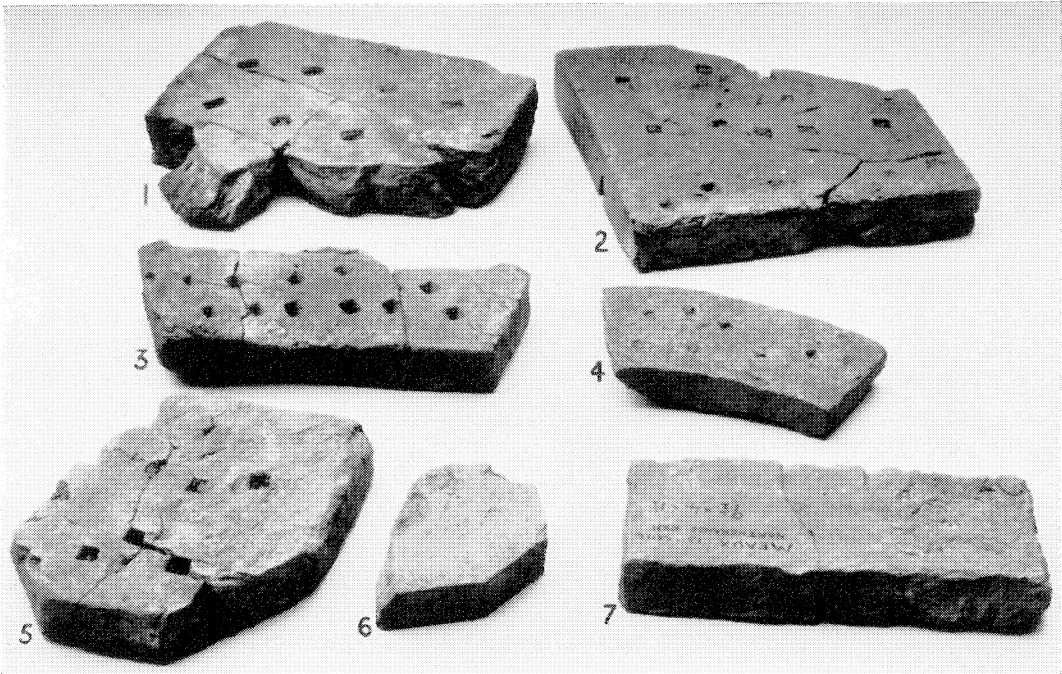


F

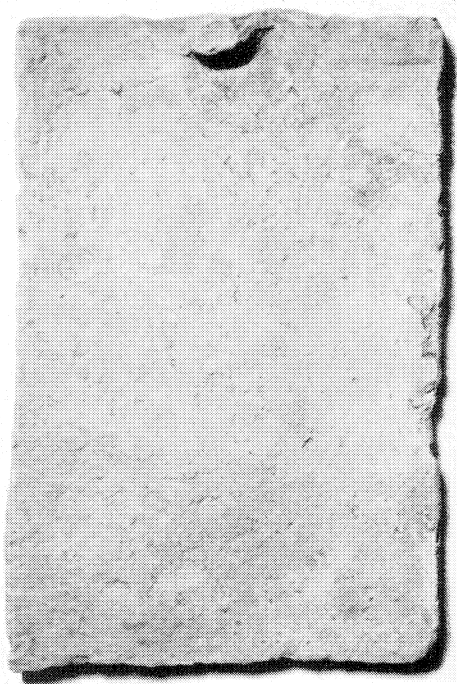
NORTH GRANGE, MEAUX, E.R. YORKSHIRE: ROOF-TILE KILN  
For detailed description of A-F see p. 168

*Phh.: E. S. Eames*

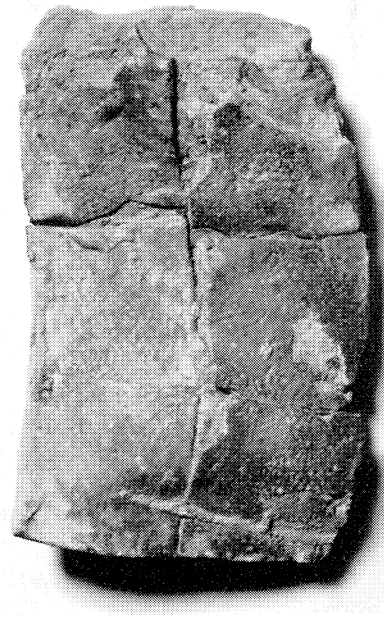
PLATE XXV



A



B

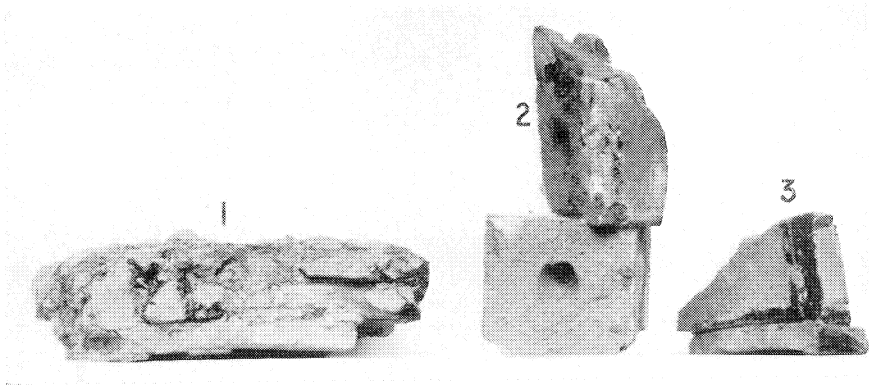


C

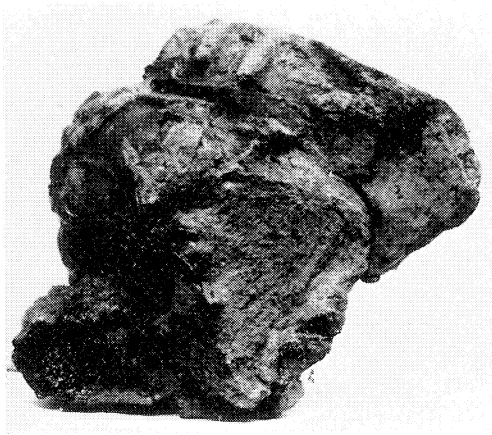
NORTH GRANGE, MEAUX, E.R. YORKSHIRE  
For detailed description of A-C see p. 168

*Ph. : British Museum*

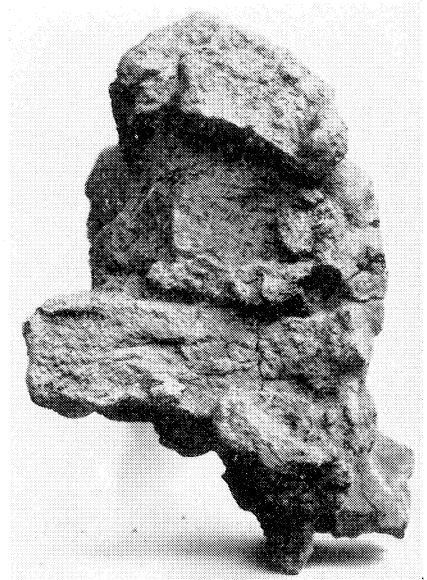
PLATE XXVI



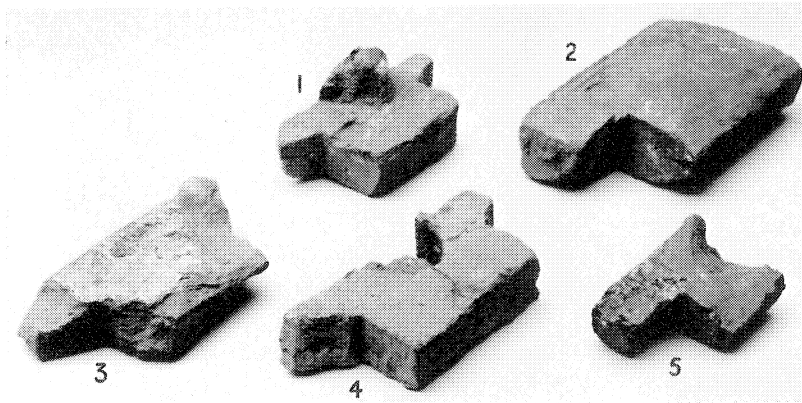
A



B



C

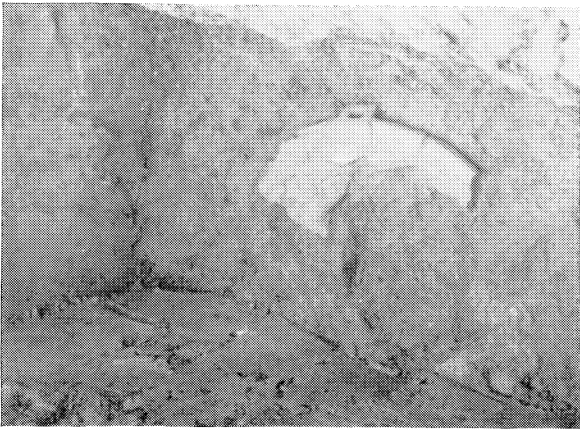


D

NORTH GRANGE, MEAUX, E.R. YORKSHIRE: FRAGMENTS OF STRUCTURE AND TILES  
For detailed description of A-D see p. 168

*Phh.: British Museum*

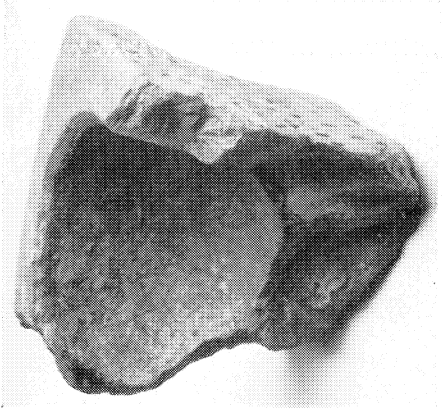




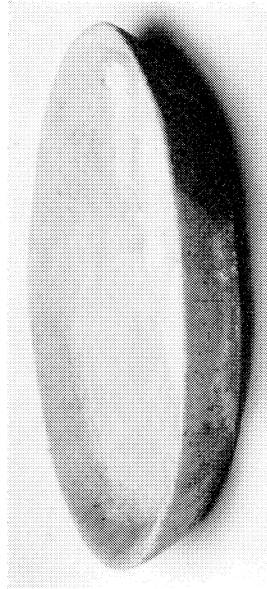
A



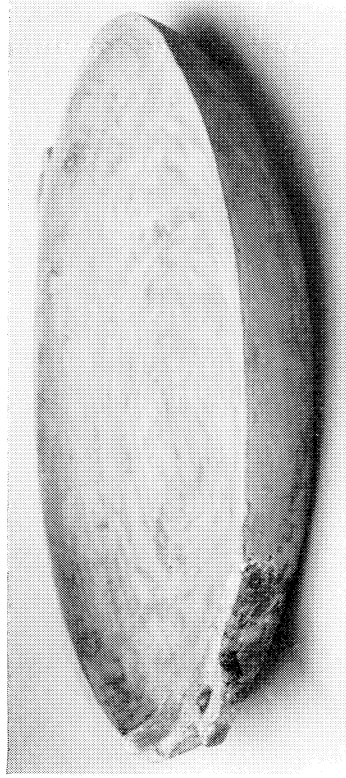
B



C



D



E

NORTH GRANGE, MEAUX, E.R. YORKSHIRE: INDUSTRIAL POTTERY FROM KILN

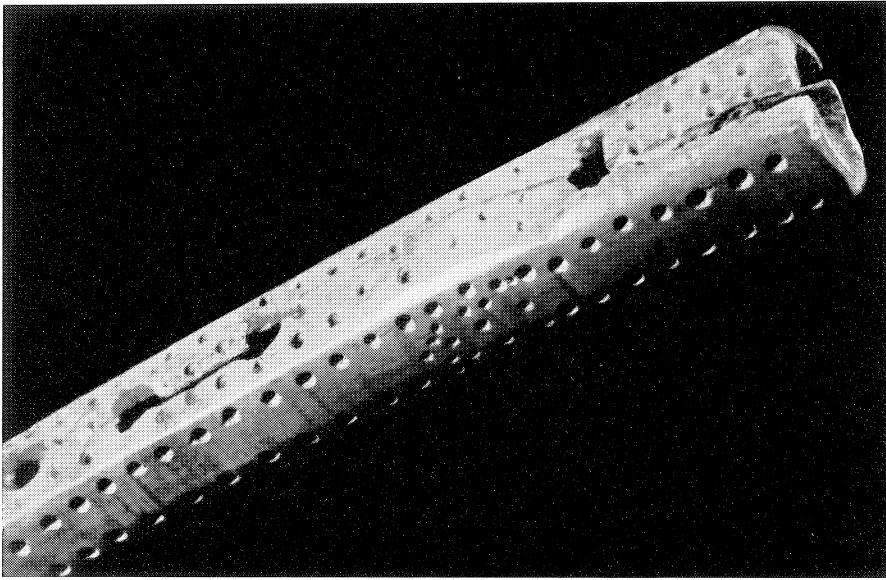
- A, E. Fragment of dish *in situ* in trench 10, and same dish restored (p. 165). Sc.  $\frac{1}{3}$   
B. Lid, restored (p. 165). Sc.  $\frac{1}{3}$   
C. Fragment of crucible or mortar (p. 163). Sc.  $\frac{1}{3}$   
D. Dish, restored, from N. revetment of roof-tile kiln (p. 164). Sc.  $\frac{1}{4}$

Phs.: A, J. Watt; B-E, British Museum

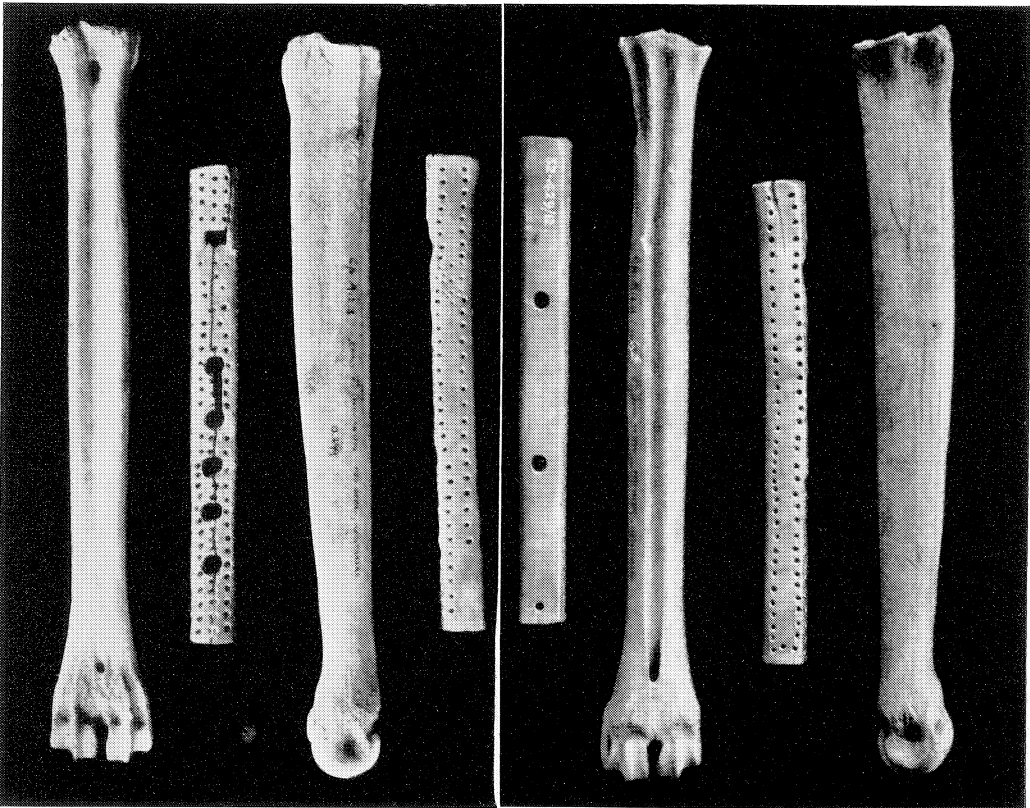


WHITE CASTLE, MONMOUTHSHIRE  
Aerial view of inner ward from NW. showing, on far side, foundation of square keep underlying later stretch of curtain wall. (p. 171)

*Ph.*: J. K. S. St. Joseph, Crown Copyright Reserved  
TAYLOR, WHITE CASTLE



A



B

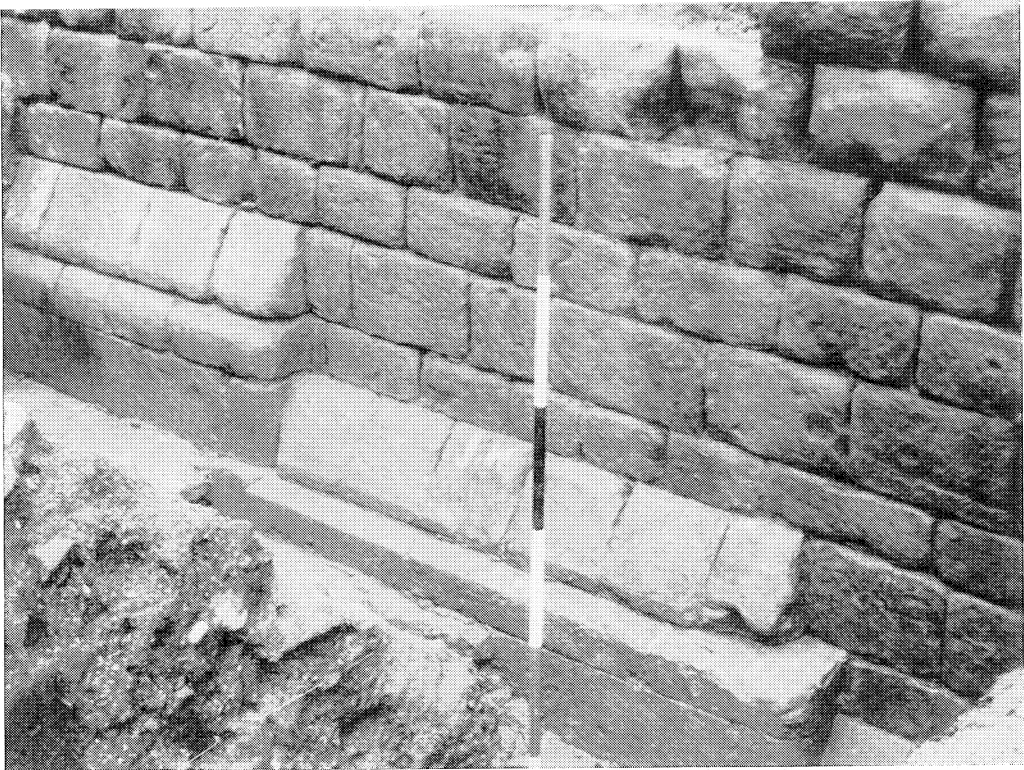
C

BONE PIPE FROM WHITE CASTLE, MONMOUTHSHIRE

A. Detail, showing lip and 'doodle' (p. 177). Sc.  $\frac{1}{4}$

B, C. Views of the four sides of the pipe and of a medieval metatarsal of *Cervus elaphus* for comparison (p. 176).  
Sc.  $\frac{1}{3}$

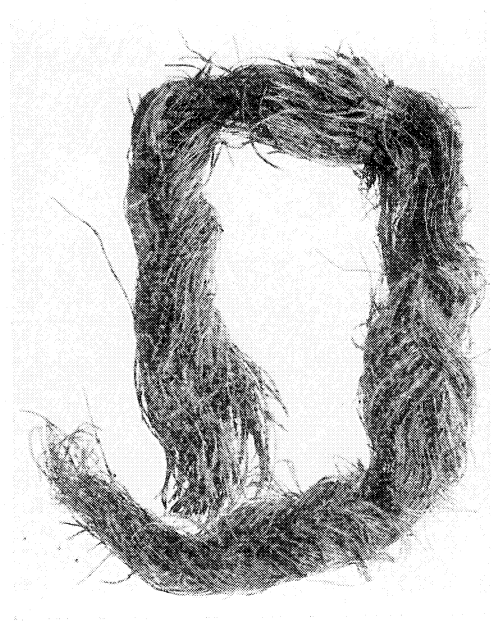
Phh.: London University, Institute of Archaeology



A



B



C

TOWN WALL, ROUSHILL, SHREWSBURY

A. The external face (p. 184)

B. Ditto, with footings exposed (p. 185)

C. Hank of *polytrichum commune*, Common Hair-moss (pp. 187, 209). Sc.  $\frac{1}{3}$

Phh.: A, B, P. A. Barker  
C, J. Scott



PLATE XXXI



A

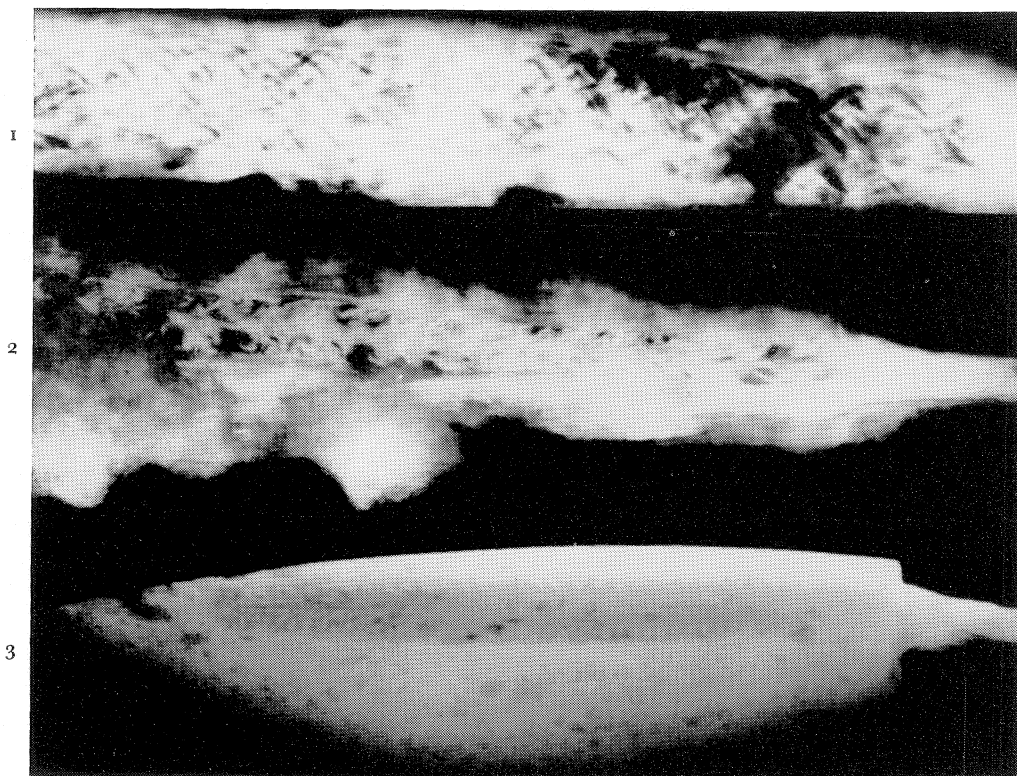


B

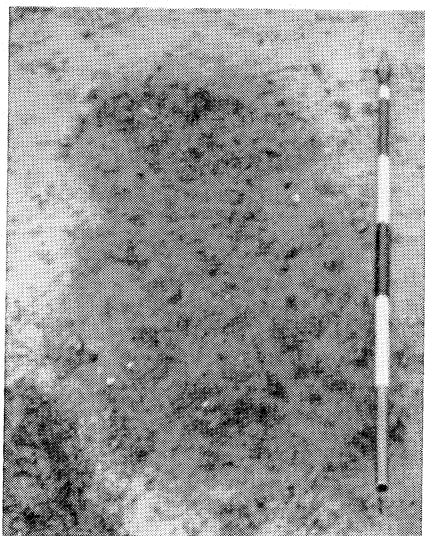
TOWN WALL, ROUSHILL, SHREWSBURY

- A. Projecting rebuilding, 18th century: 'P' indicates reused plinth stones (p. 187)  
B. Internal face, showing clay bank, later ash-pit and modern mortar rubble (p. 184)

*Ph. : P. A. Barker*



A



B



C

THE KITCHEN AREA, NORTHOLT MANOR, MIDDLESEX

- A. X-radiographs of 1, 2. Pattern-welded swords, Brentford and Northolt; 3. Silver-inlaid knife, Wandsworth (p. 288)
- B. Grave 2 (Saxon) before excavation; features show clearly as grey marks in clean brown natural clay (p. 226)
- C. Grave 1 (Saxon); showing skeleton, lying on l. side, almost decayed skull shows as circular light mark, femur and tibia are lower down (p. 225)



A

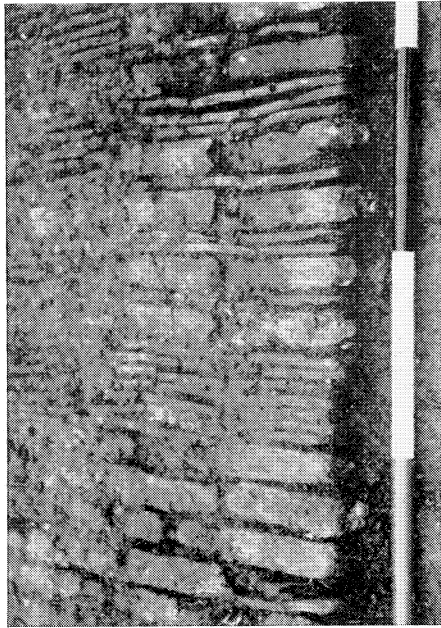


B

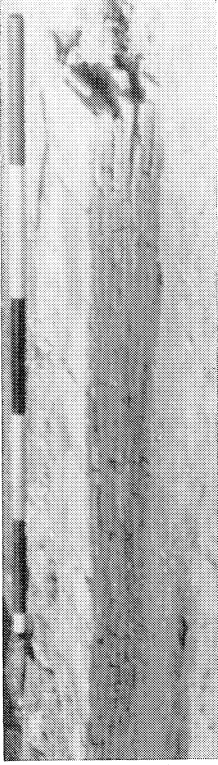
THE KITCHEN AREA, NORTHOLT MANOR, MIDDLESEX

- A. SE. side of period-III moat, looking W.; enclosure on r., with ranging-pole on terrace formed by the partly filled in period-II moat (p. 243)
- B. Tiled hearth (225) of period II from SW., with period-III addition (342) on r.; robber-trench of wall 341 in foreground; later robber-trench (415) on l., on top of hearth; behind hearth are the solid flints of wall 221 (pp. 242, 244, 249)

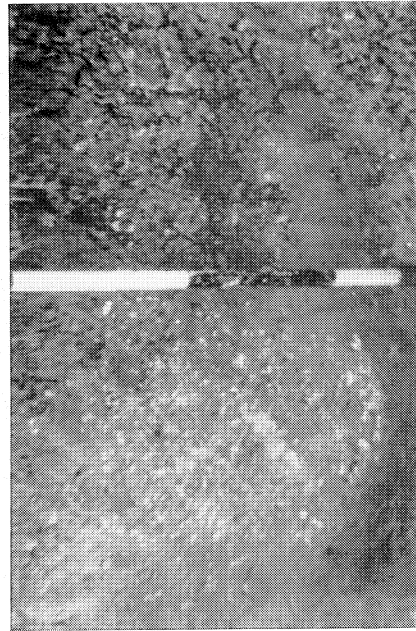




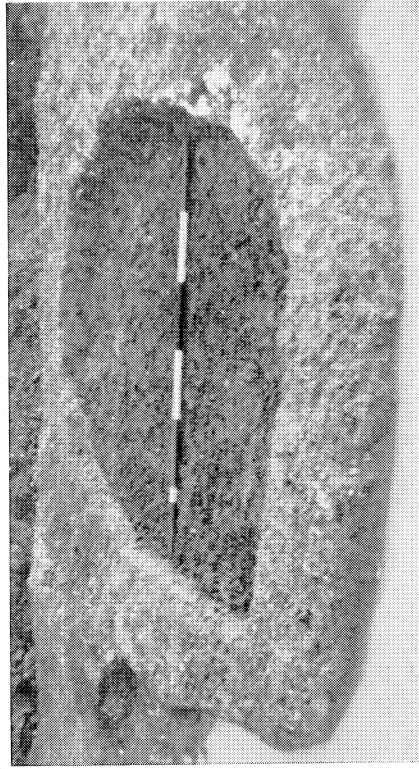
A



B



C

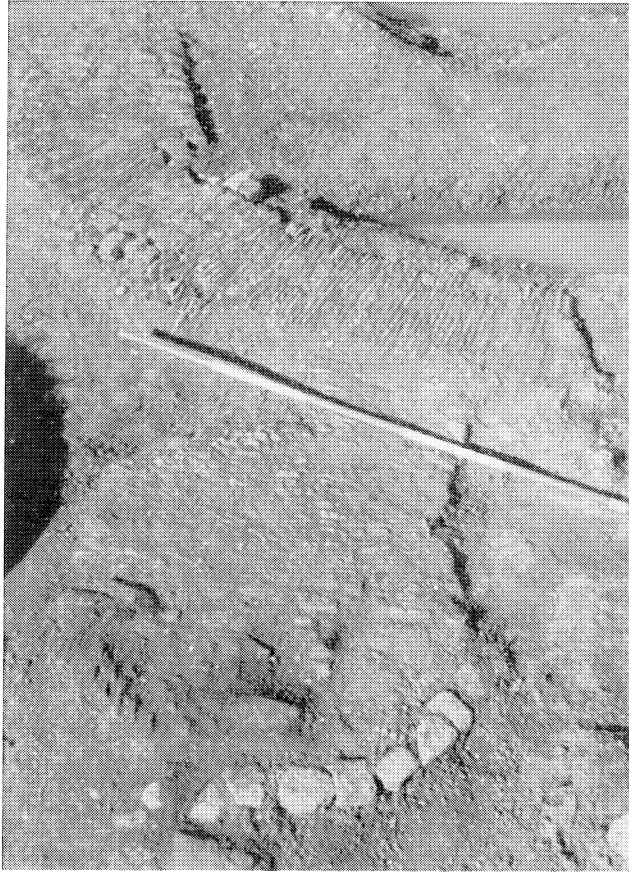


D

THE KITCHEN AREA, NORTHOLT MANOR, MIDDLESEX

- A. Close-up view of hearth 342 (period III) from NW., showing alternate tiles on edge and bricks (p. 244)
- B. Back of hearth 225 (Period II) after removal of main rows of tiles, showing horizontal backing, 10 tiles thick, behind 226 (p. 242)
- C. To l. of ranging-pole is robber-trench of wall 302; opposite black section of pole is grey layer I-II, and above is build-up of clay for period III; at bottom, natural clay (p. 247)
- D. Robber-trench of oven 319 from NW., with fragments of clunch *in situ* by end of ranging-pole on r., in l. background, rake-back 321 (p. 246)





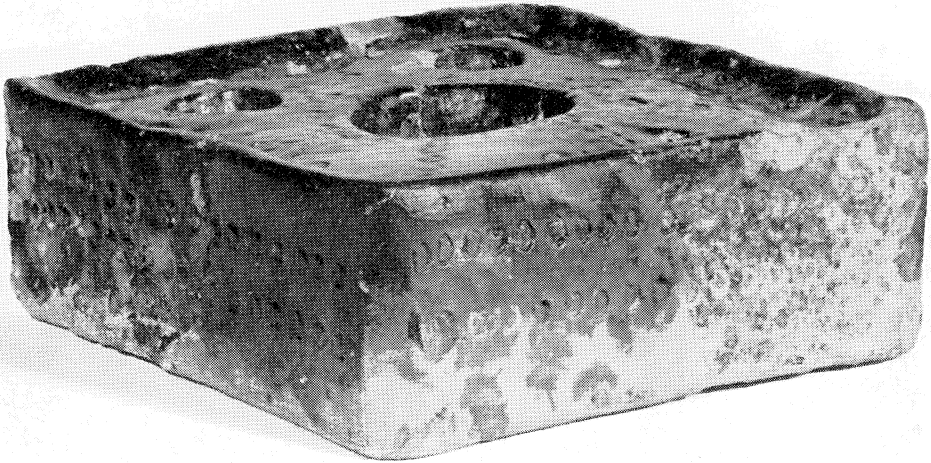
A



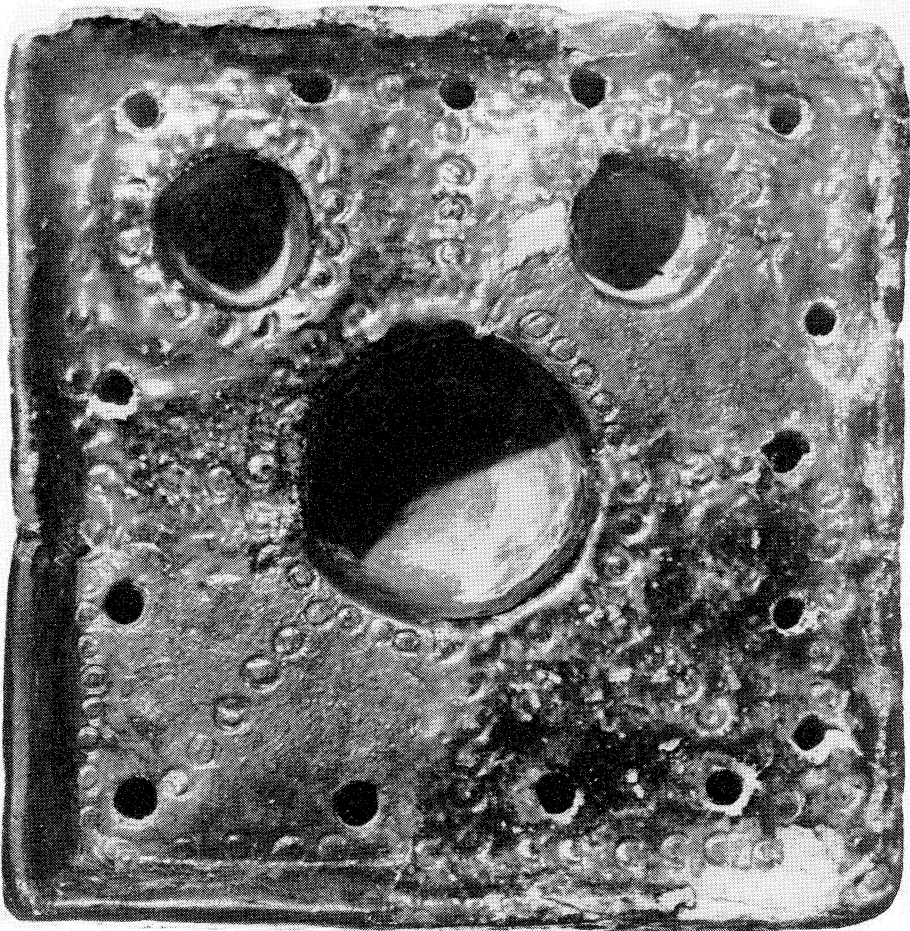
B

THE KITCHEN AREA, NORTHOLT MANOR, MIDDLESEX

- A. In foreground, oven 410 (Period IV) from SE., showing brick surround and much-robbed tiles on edge; behind ranging-pole, tiles on edge of 411 and bricks and tiles of 412 (p. 252)
- B. Oven 404 (Period IV) from SW., showing brick surround, greensand blocks in centre, and mortar floor 408 beyond. Wall 313 has been removed, but mortar floor continues through doorway (p. 252)



A



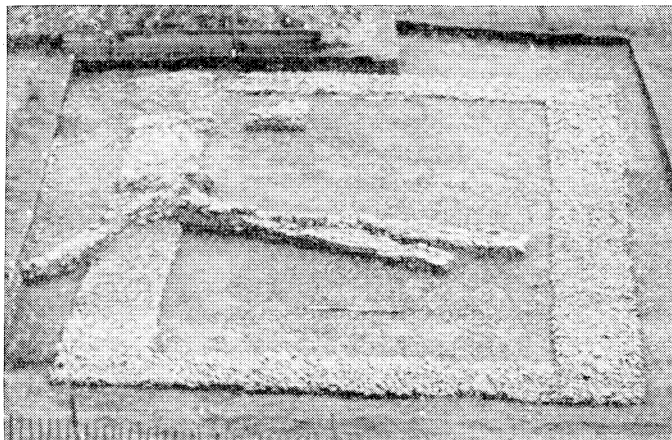
B

POTTERY INKSTAND FROM BYLAND ABBEY, YORKS. (p. 307)

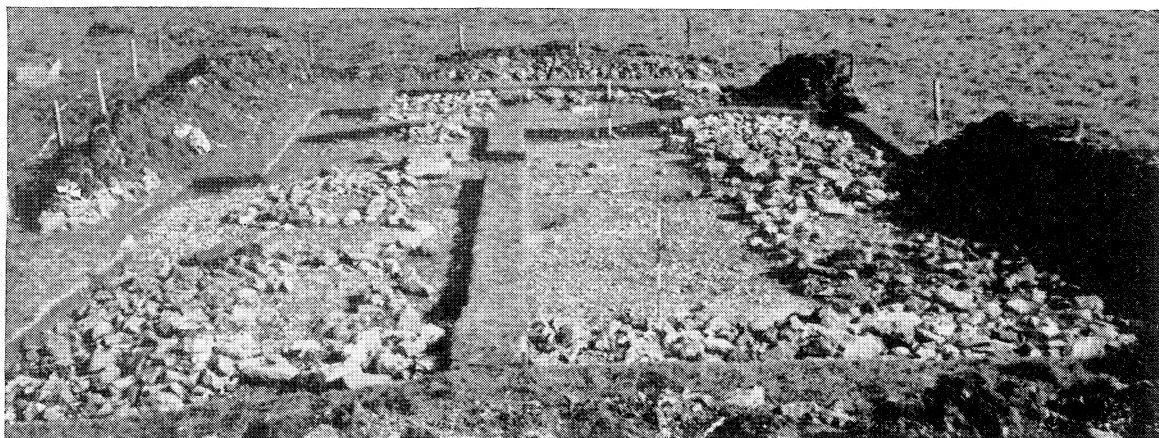
A. Side view (Sc.  $\frac{1}{2}$ ). B. Top view (Sc.  $\frac{2}{3}$ )

*Ph.:* Ministry of Works

PLATE XXXVII



A



B

- A. WEAVERTHORPE, E.R. YORKS.: VIEW OF 12th-CENTURY BUILDING, 57 ft. BY 28 ft., AS EXCAVATED (p. 329)  
B. FYFIELD DOWN, WILTS.: VIEW OF 12th- TO 13th-CENTURY LONGHOUSE, 58 ft. BY 14 ft., AS EXCAVATED (p. 330)

*Ph.: A. Crown Copyright Reserved  
B. P. J. Fowler*