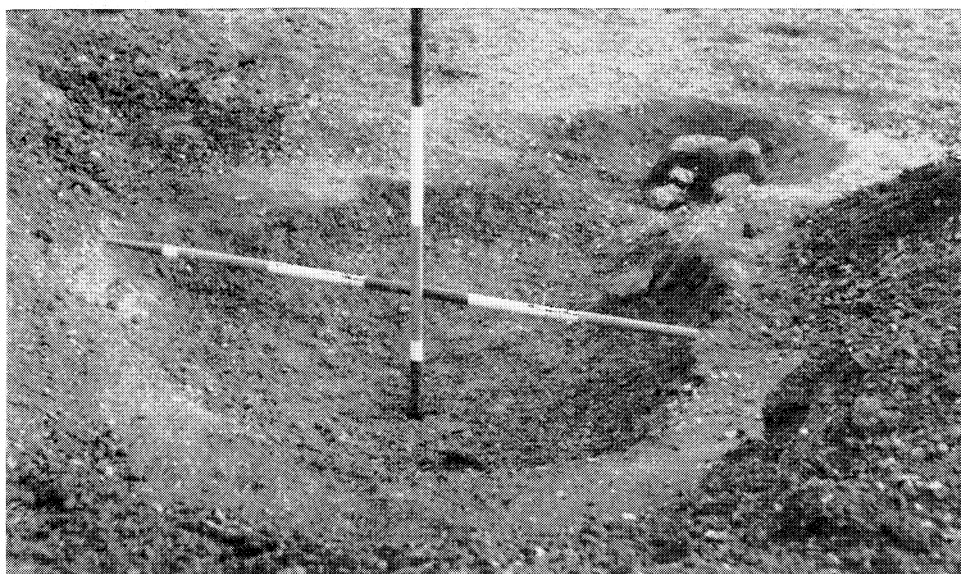


PLATE I



A



B

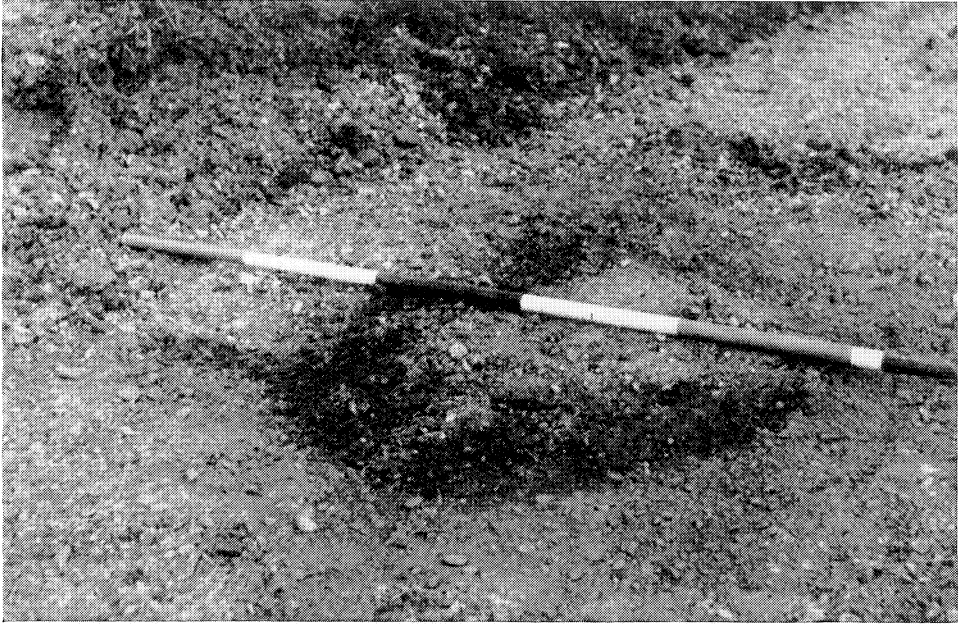
PURWELL FARM, CASSINGTON, OXON.: KILN 1 (p. 4)

A. Reddened marks on brushed gravel surface, indicating position before excavation

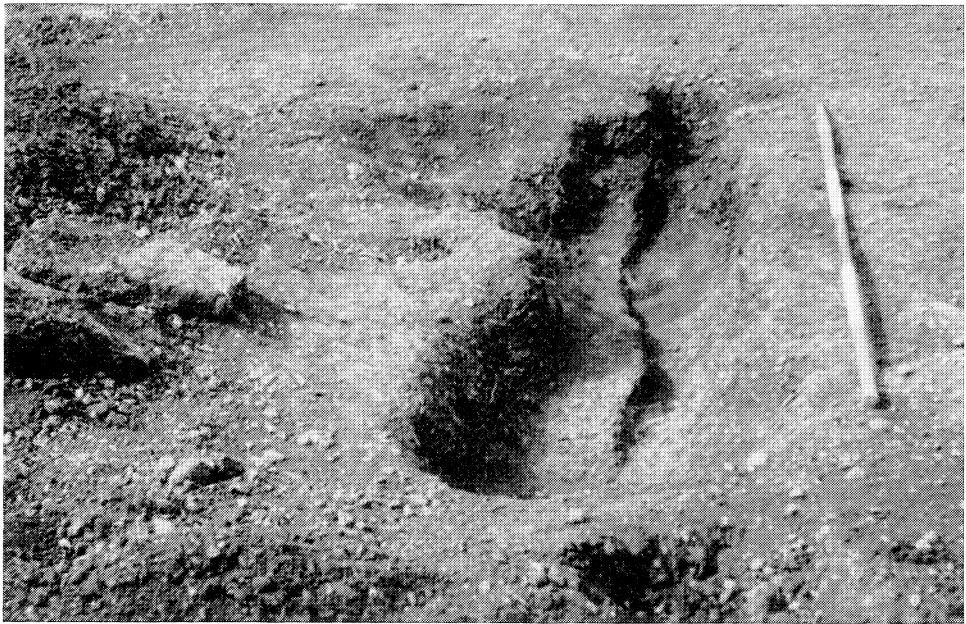
B. Under excavation

Phh.: B. V Arthur

PLATE II



A



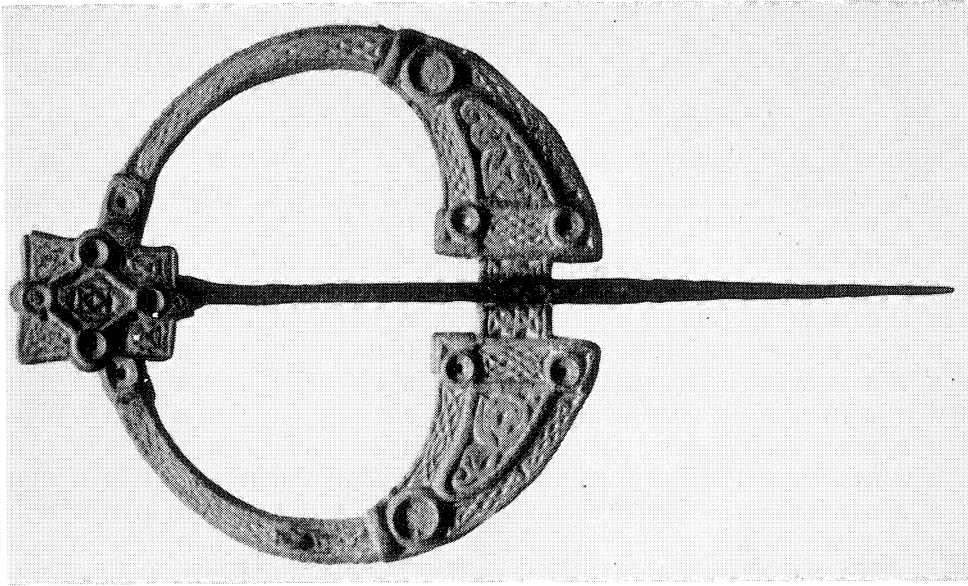
B

PURWELL FARM, CASSINGTON, OXON.: KILN 2 (p. 5)

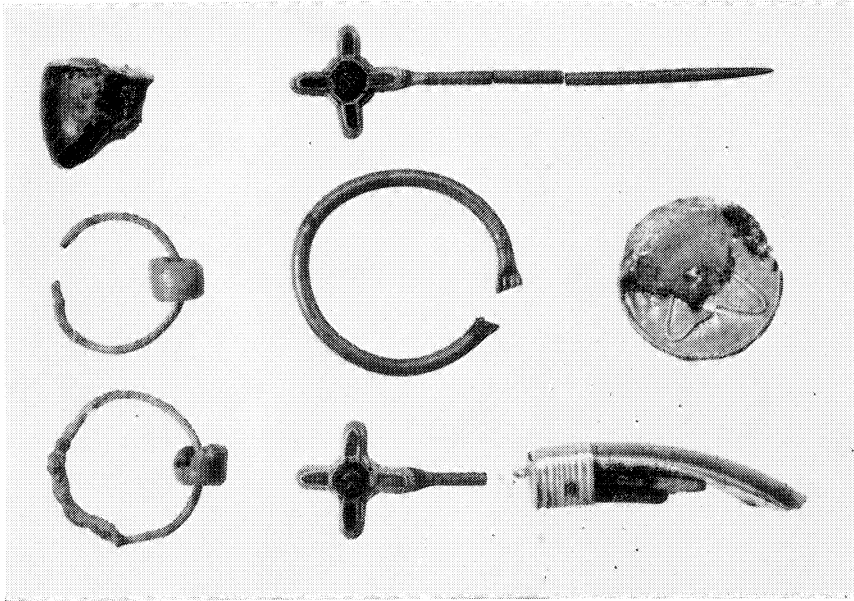
A. Reddened marks on brushed gravel surface, indicating position before excavation

B. Under excavation, viewed from stoke-pit into firing chamber, showing the two phases of kiln floor

Phh.: E. M. Jope



B



A

ANGLIAN JEWELLERY FROM DERBYSHIRE

B. Gilt-bronze penannular brooch from Bonsall (p. 39). Sc. $\frac{3}{4}$

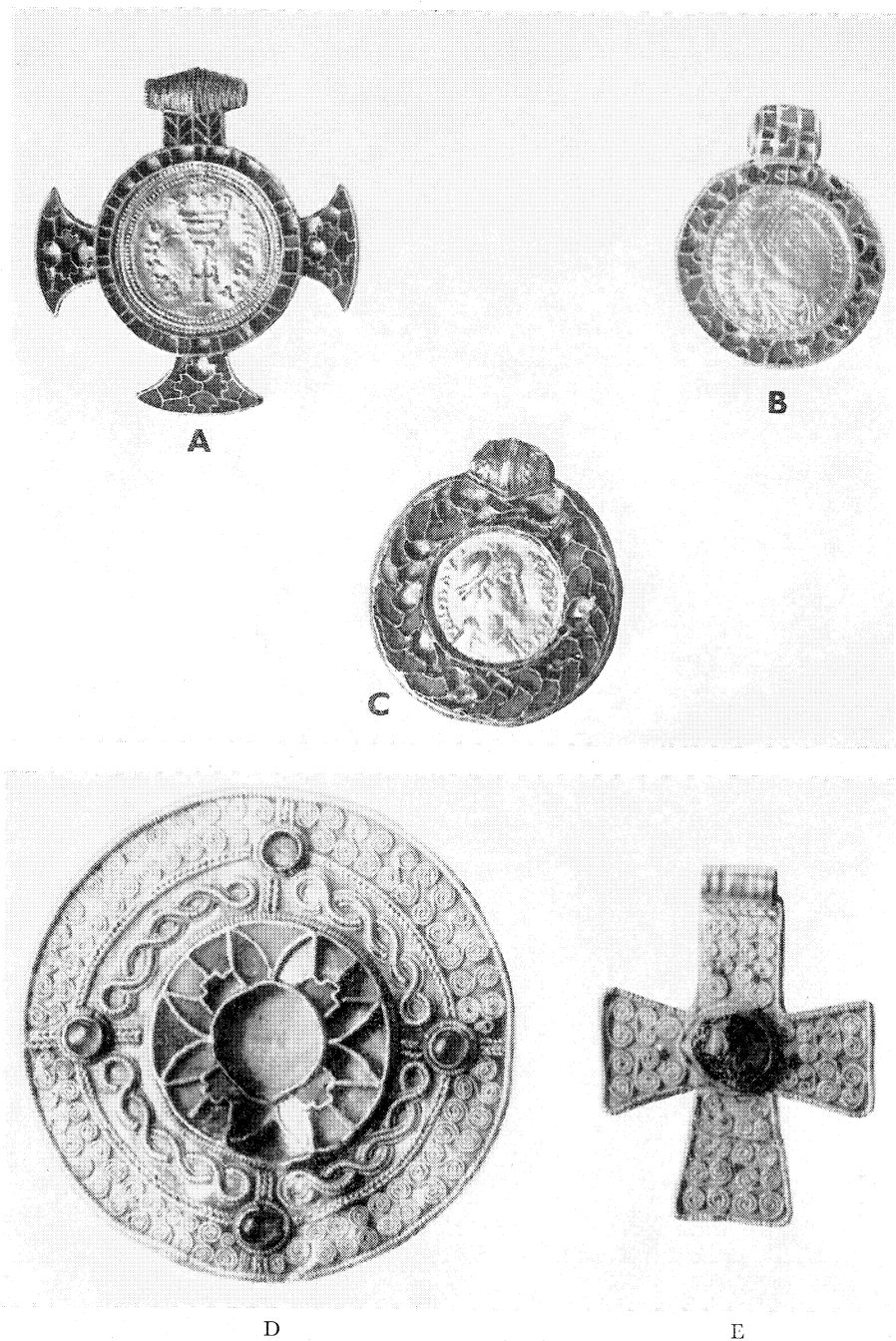
A. Two silver pins, etc., from Wigber Low (p. 29). Sc. $\frac{1}{3}$

Plin.: British Museum

OZANNE, PEAK DWELLERS

MEDIEVAL ARCHAEOLOGY, VOL. VI-VII (1962-3)

PLATE IV



ANGLO-SAXON JEWELLED PENDANTS. (Sc. $\frac{1}{2}$)

A. Wilton, Norfolk (p. 41)

B. Forsbrook, Staffordshire (p. 41)

C. Bacton, Norfolk (p. 41)

D, E. White Low, Derbyshire (pp. 26 ff. and FIG. 11, a, b)

*Phh.: A-C, British Museum
D, E, Sheffield Museum*

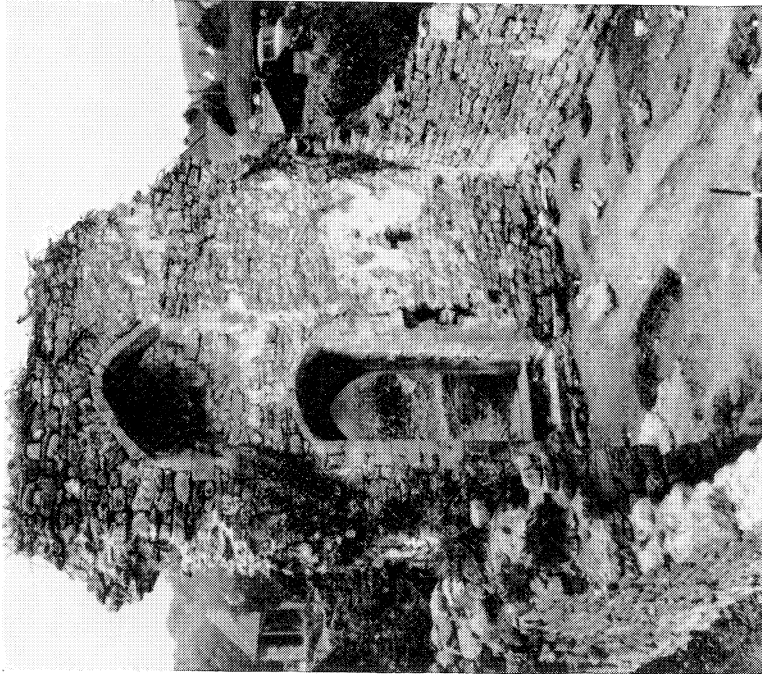


CHEDDAR, SOMERSET

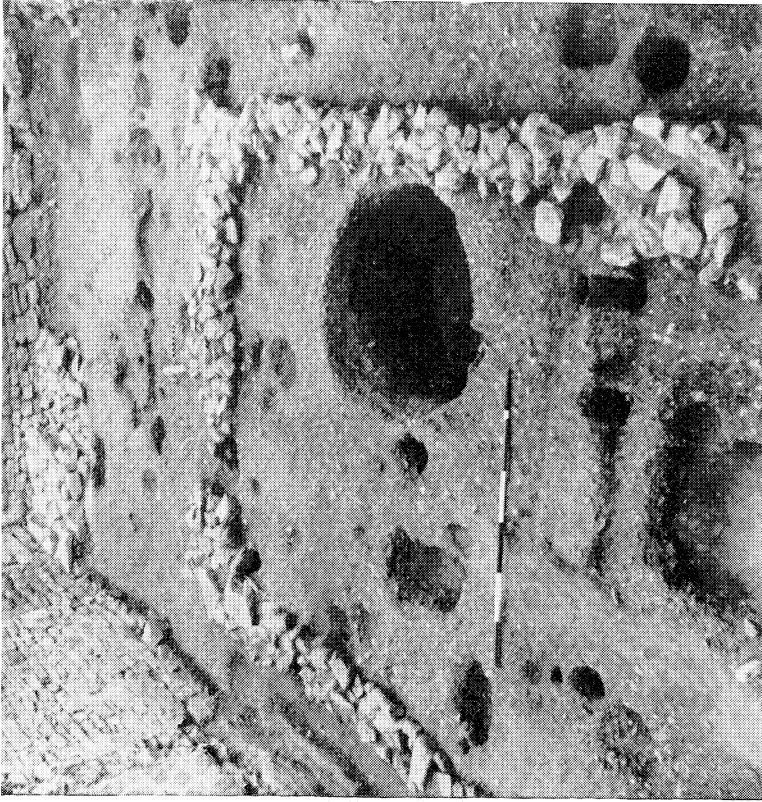
Aerial view, from N., of site of Saxon and medieval palaces after excavation (pp. 53 ff.; and cf. FIG. 18)

Ph.: J. K. S. St. Joseph. Crown Copyright Reserved

PLATE VI



A. West wall of Chapel III from south-east (p. 65)
B. Chapel I from west (p. 57 ff.)

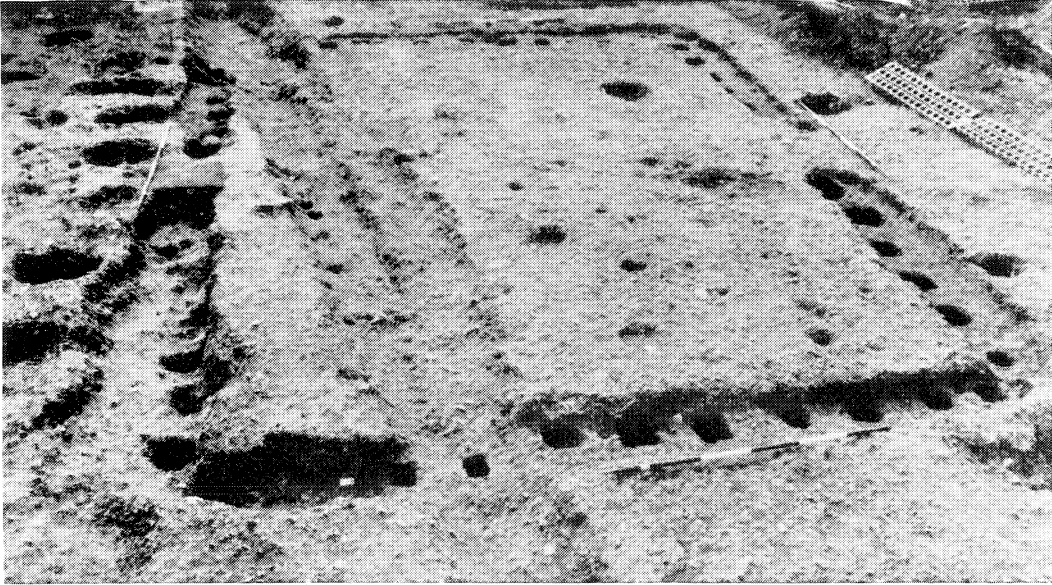


B

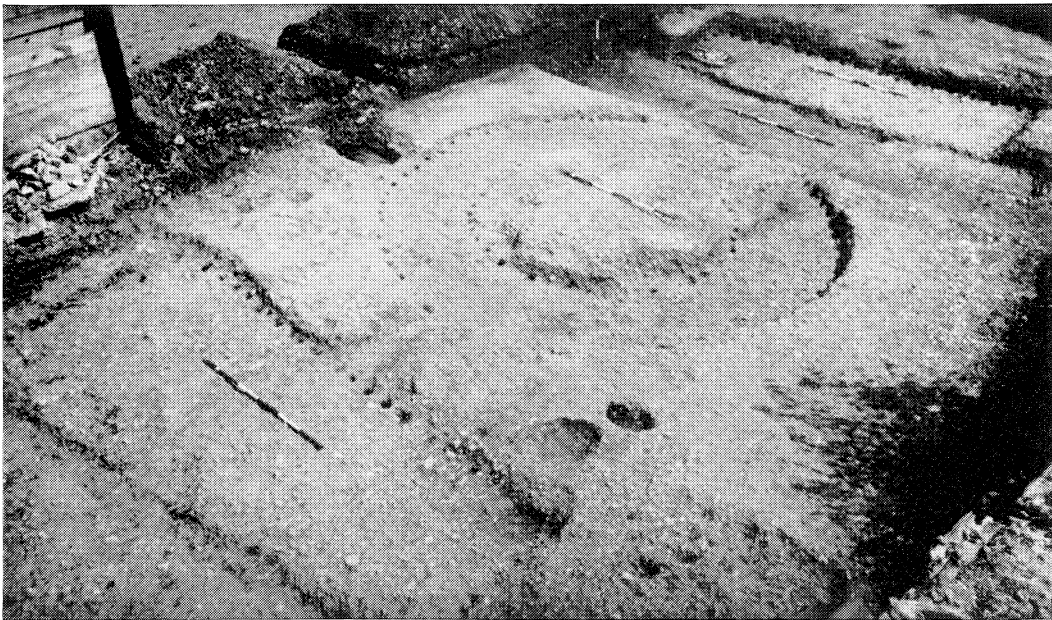
CHEDDAR, SOMERSET

Ph. : P. A. Rahtz. Crown Copyright Reserved (Ministry of Public Building and Works)

PLATE VII



A



B

CHEDDAR, SOMERSET

A. Building P from east (p. 61)

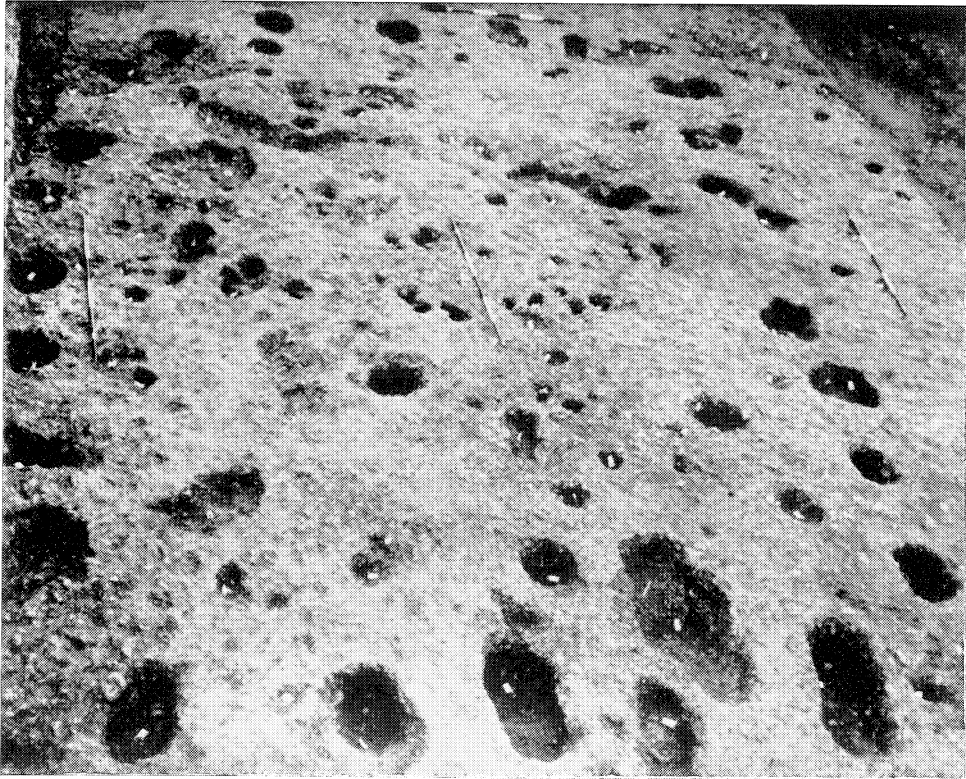
B. Corn-mill from north-west (p. 61 f.)

Ph. : P. A. Rahtz. Crown Copyright Reserved (Ministry of Public Building and Works)

PLATE VIII



A



B

CHEDDAR, SOMERSET

A. East Hall I from east (pp. 63 ff.)

B. Building N from west (p. 57)

Phl.: P. A. Rahtz. Crown Copyright Reserved (Ministry of Public Building and Works)

PLATE IX



A



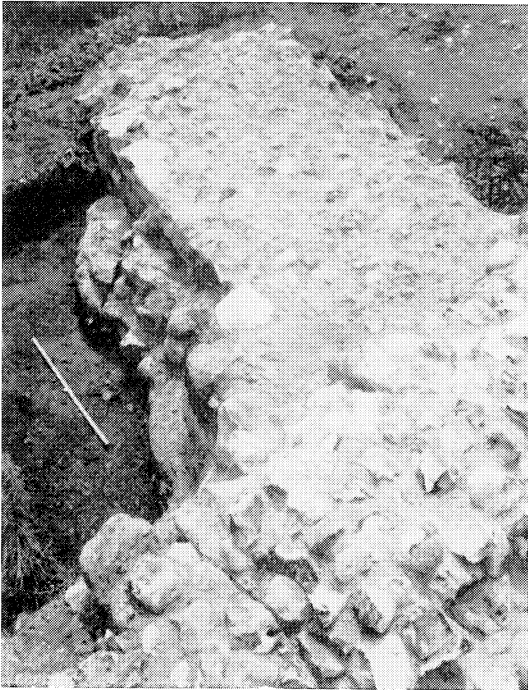
B

NORTH ELMHAM, NORFOLK

- A. Transept partially stripped, looking N.; F2b chalk floor with indented outline in middle ground and phase-A walling in background (p. 76).
B. Interior of nave, looking W., showing Despenser's insertions (p. 76).

Phh.: Crown Copyright Reserved

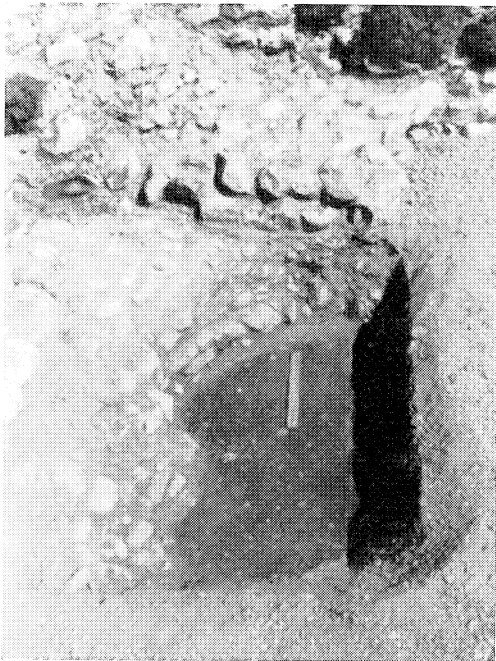
PLATE X



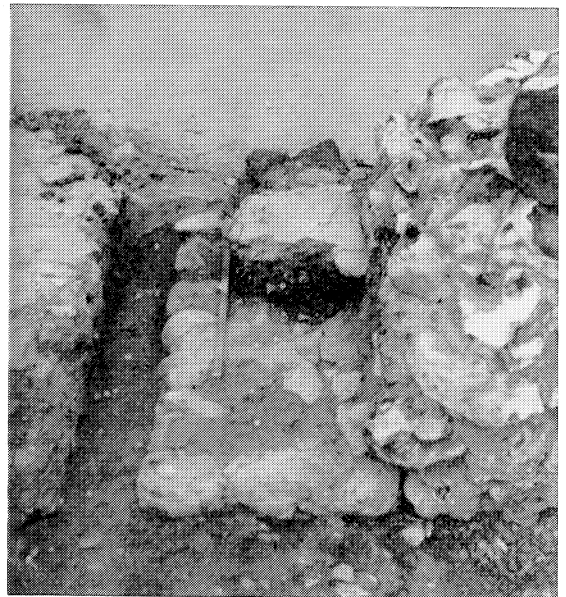
A



B



D

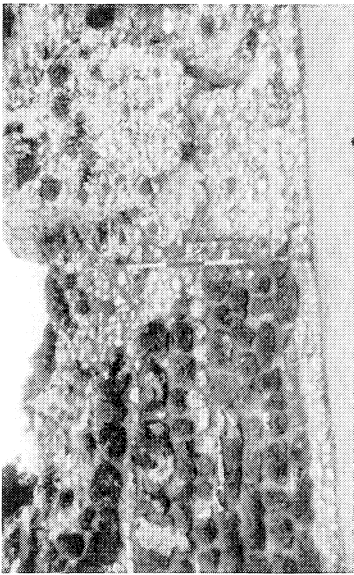


C

NORTH ELMHAM, NORFOLK

- A. Junction of N. apse wall and transept (pp. 74, 77)
B. Despenser's semicircular steps on chord of apse, looking N. (p. 86)
C. Extension to N. jamb of apse arch with fragment of Despenser's steps superimposed (p. 87)
D. NE. angle of nave, looking E., showing base of 'triumphal' arch and 'apsidiole' (p. 89)

Ph. : Crown Copyright Reserved



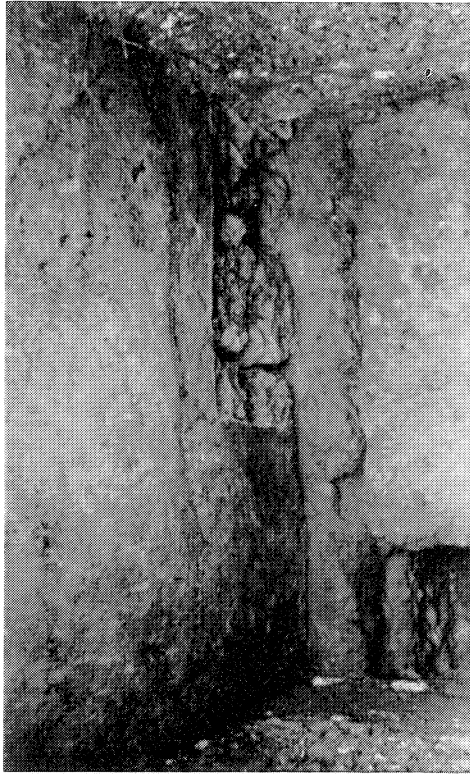
A



C



B



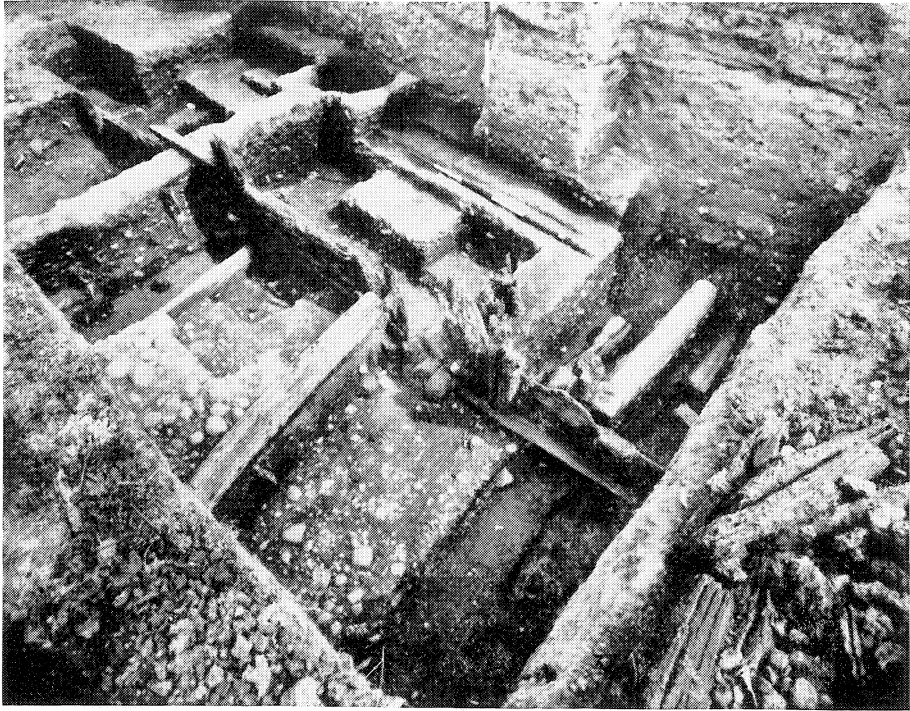
D

NORTH ELMHAM, NORFOLK

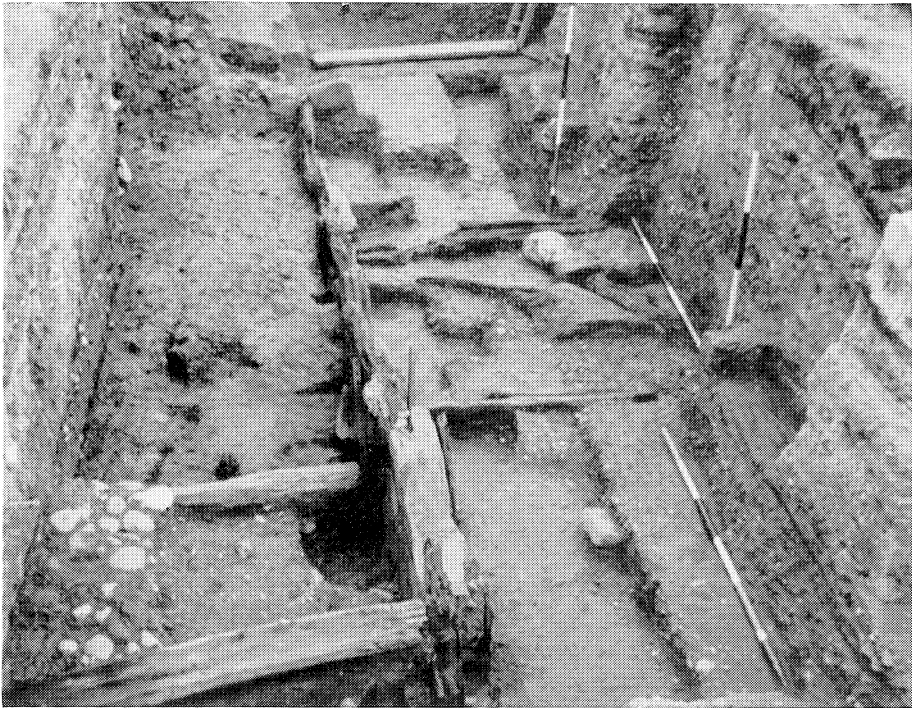
- A. Interior of N. nave wall, showing phase-B walling on l. and Despenser blocking on r. (p. 77)
- B. W. jamb of N. nave door (phase C) partly unpicked (p. 78)
- C. Post-hole (?) just W. of tower arch and superimposed floors, seen from W. (p. 92)
- D. W. wall of W. tower with rendering partly removed to show S. jamb of W. door (p. 84)

Ph. : Crown Copyright Reserved

PLATE XII



A



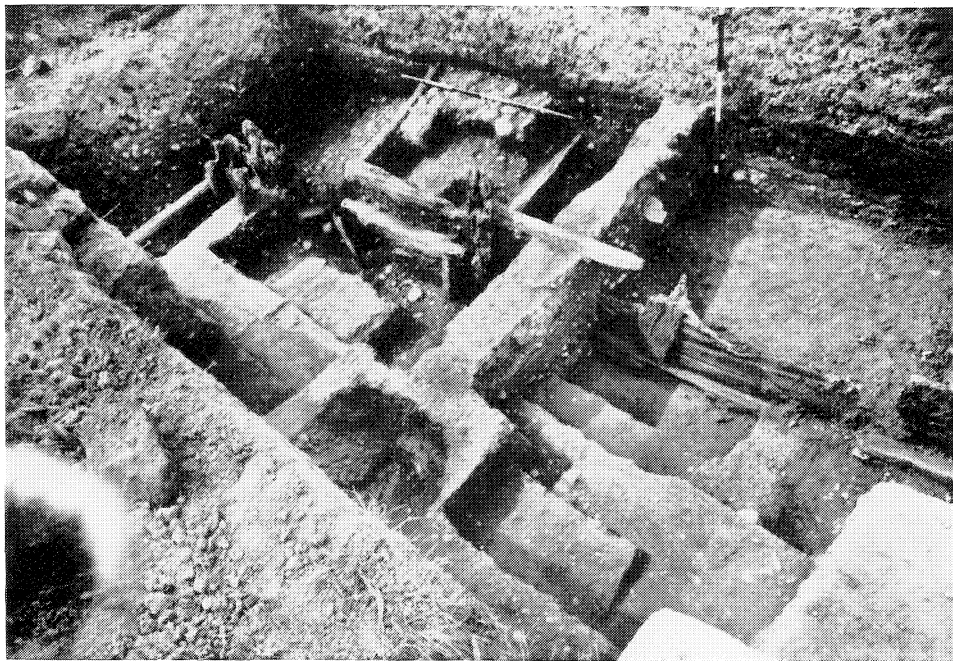
B

WOODEN BUILDING, WEOLEY CASTLE, BIRMINGHAM

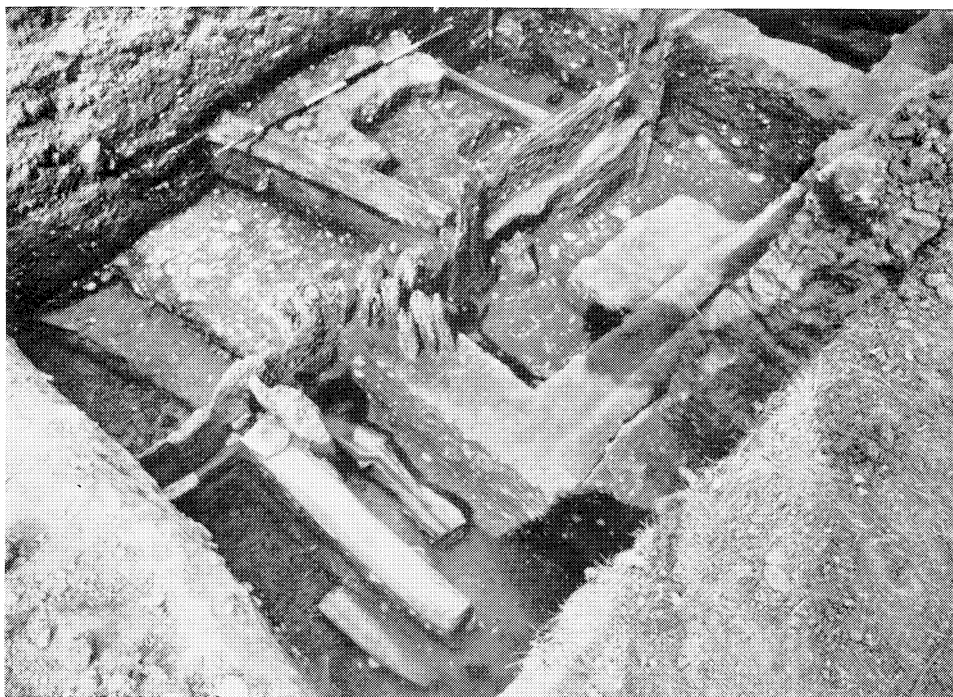
- A. Looking SE. In centre foreground N. wall with cobbled entrance; on r., rear partition for W. chamber (p. 112)
- B. Looking E. On l., N wall with entrance; on r., internal partitions (p. 117)

Phh.: Copyright Birmingham City Museum

PLATE XIII



A



B

WOODEN BUILDING, WEOLEY CASTLE, BIRMINGHAM

- A. Looking N. Post-hole of aisled hall (period III) in centre foreground, N. wall in centre and entrance in l. background (p. 119)
B. Looking NE. Internal partition and door-swing of W. chamber in foreground with threshold beam (period I) behind. N. wall in centre and entrance in l. background (p. 116 f.)

Phh.: Copyright Birmingham City Museum

PLATE XIV



A



B

WOODEN BUILDING, WEOLEY CASTLE, BIRMINGHAM

A. Looking N. Internal partition of W. chamber, showing hole for doort-swing with leather washer (pp. 116, 119)

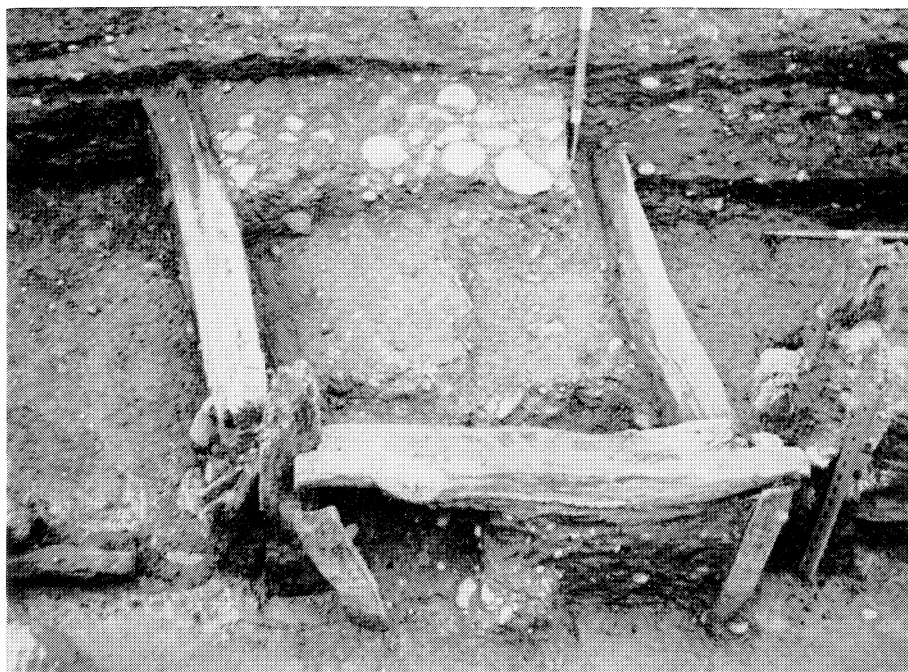
B. Pissoir (?), indicated by trowel, inserted into N. wall (p. 117)

Phot. : Copyright Birmingham City Museum

PLATE XV



A

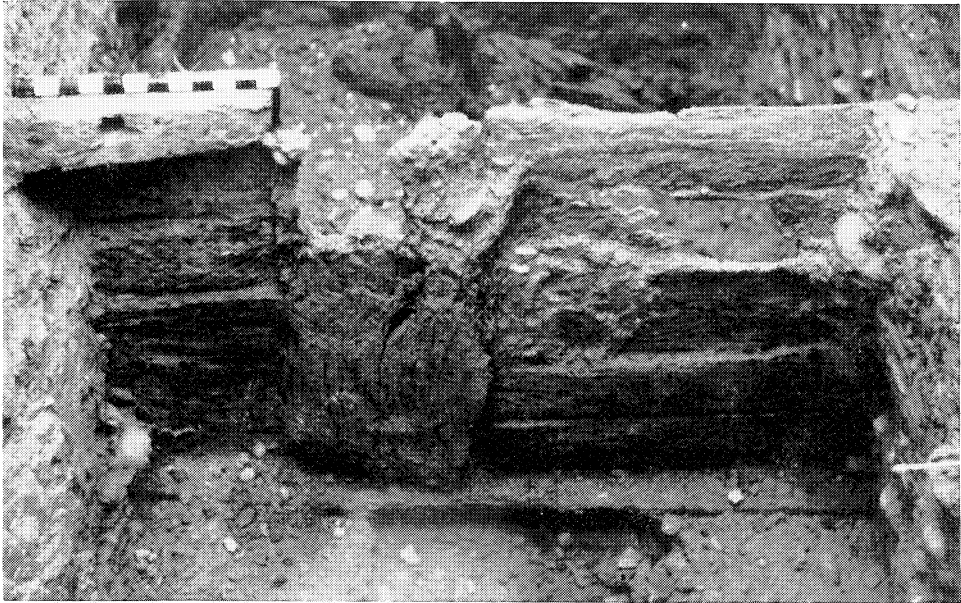


B

WOODEN BUILDING, WEOLEY CASTLE, BIRMINGHAM

- A. Entrance looking N., showing threshold of period VI above threshold of period V (p. 119)
B. Entrance looking N. Threshold of period V showing jointing to door-uprights (p. 119)

Phh.: Copyright Birmingham City Museum



A



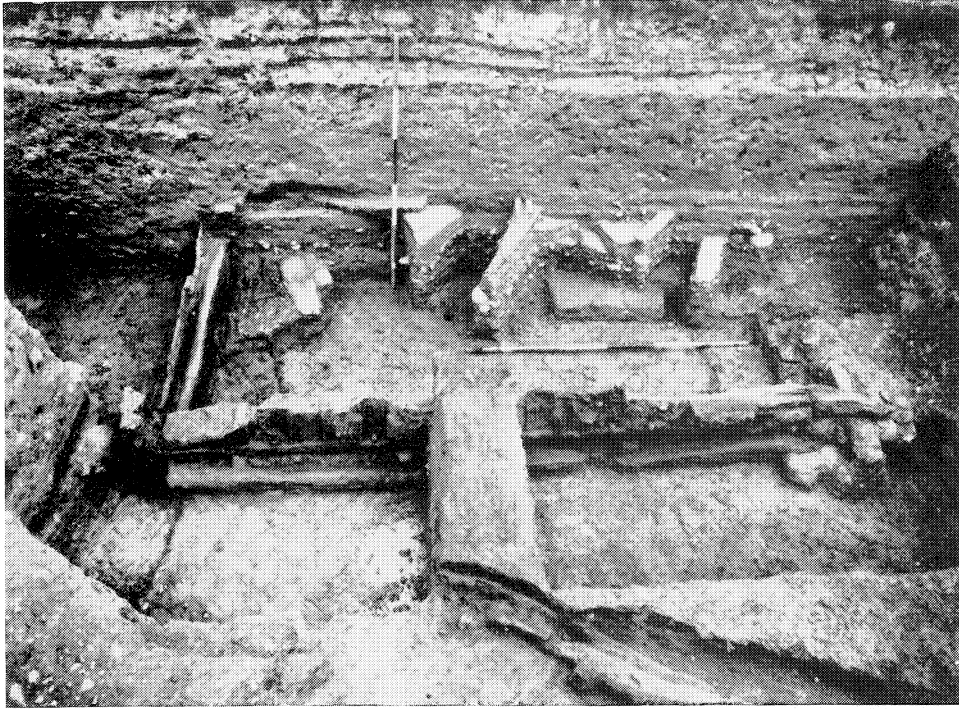
B

WOODEN BUILDING, WEOLEY CASTLE, BIRMINGHAM

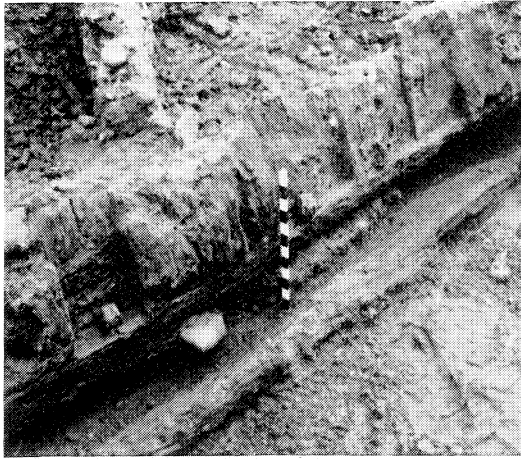
- A. Detail of N. wall showing horizontal weather-boarding slotted into mortised uprights on sill beam (p. 116)
B. Entrance looking S., showing threshold of period V above plank of period IV. On l., sill beam of period III; on r., sill beam of period V above that of period III (pp. 117, 119)

Ph. : Copyright Birmingham City Museum

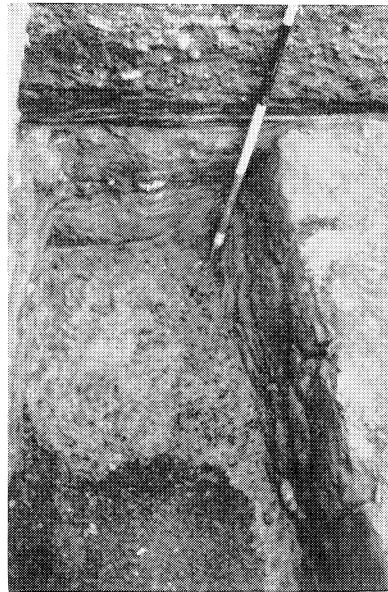
PLATE XVII



A



B

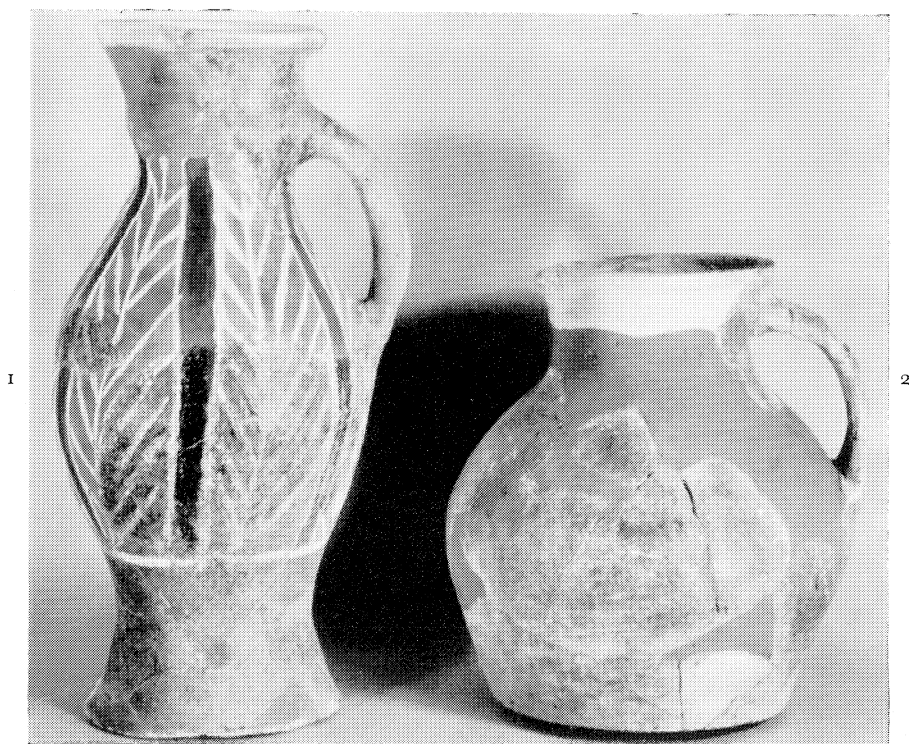


C

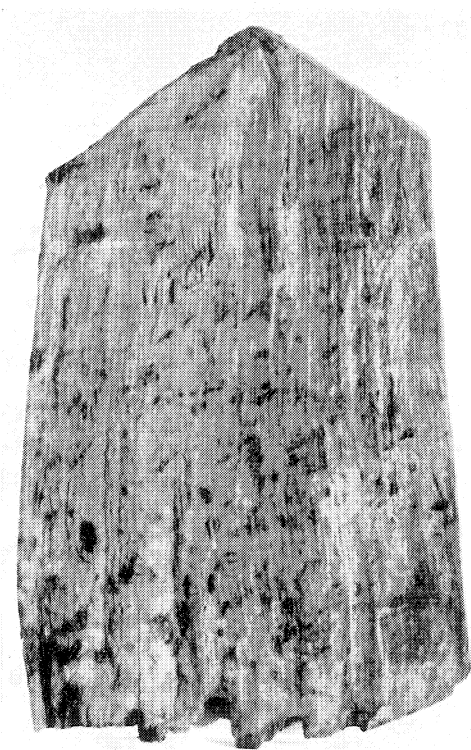
WOODEN BUILDING, WEOLEY CASTLE, BIRMINGHAM

- A. W. end and NW. corner showing vertical weather-boarding of period III (p. 116 f.)
B. Details of W. end showing pegs to vertical weather-boarding with sill beam of periods I and II below (p. 116 f.)
C. On r., W. edge of stone hearth of periods I and II. In foreground, charcoal hearth earlier than building (pp. 117, 122)

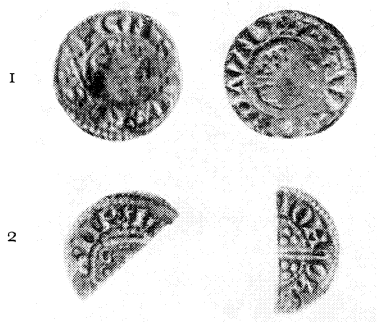
Phh.: Copyright Birmingham City Museum



A



B



C

WEOLEY CASTLE, BIRMINGHAM

- A. Two jugs (p. 129): 1. From floor of stone building. 2. From robbed wall of stone building. Sc. $\frac{1}{4}$
- B. Vertical board of gable end of period-III building (p. 116). Sc. $\frac{1}{4}$
- C. Two coins (pp. 122, 132): 1. Penny of John. 2. Half-penny of Henry III. Sc. $\frac{1}{4}$

Phl. : Copyright Birmingham City Museum

←-3

←-4



1 →

2 →

KING'S LYNN, NORFOLK

Aerial view looking NW. along Queen Street (p. 174)

- 1. Warehouses; tower; Clifton House
- 2. Thoresby College; Queen Street

- 3. Custom House; King Street
 - 4. Guild Hall; Saturday Market
- Ph.: P. M. Goodchild*

MEDIEVAL ARCHAEOLOGY, VOL. VI-VII (1962-3)

PANTIN, KING'S LYNN



←4
←5

←6

↑1
↑2

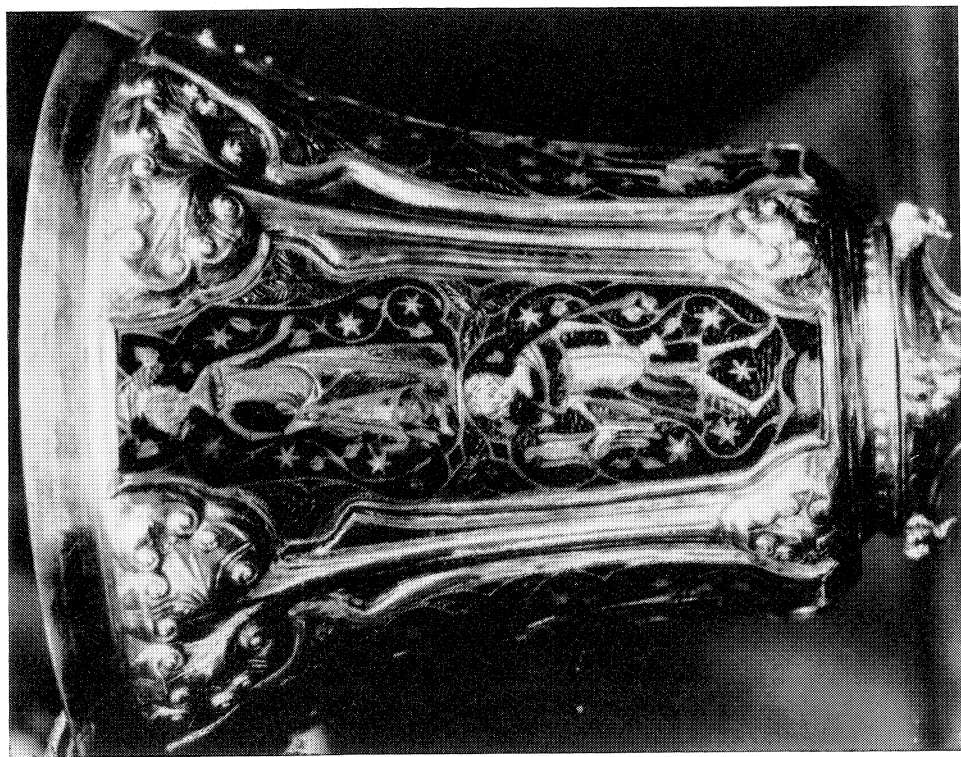
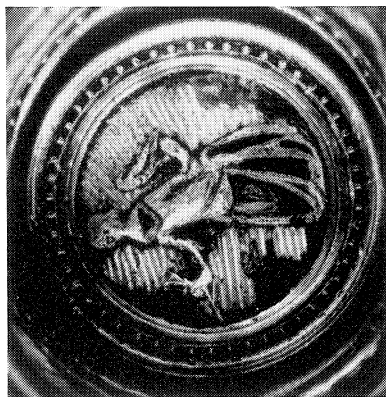
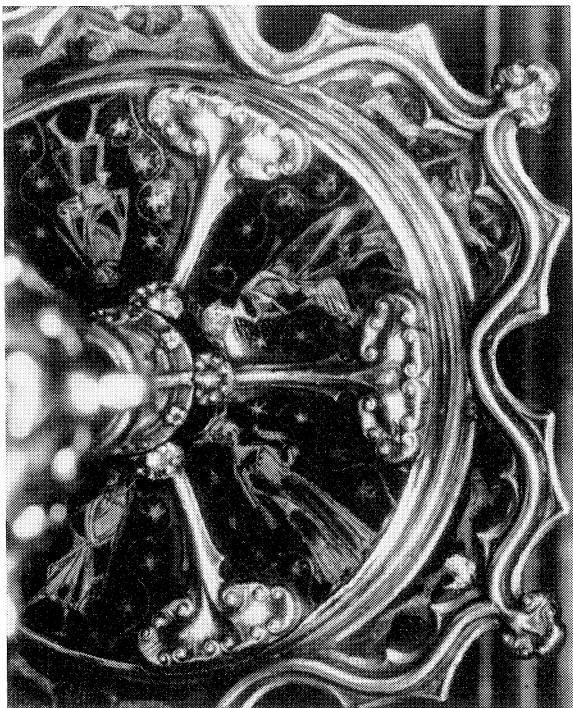
↑3

KING'S LYNN, NORFOLK

Aerial view looking N. from Mill Fleet over Nelson Street (p. 174)

- 1. Warehouses; Steelyard
- 2. Hampton Court
- 3. Mill Fleet
- 4. Guild hall
- 5. St. Margaret's church
- 6. 18th-century merchants' houses in Nelson Street

Ph.: Lynn News and Advertiser



KING'S LYNN, NORFOLK

Three panels from the 'King John' cup (silver-gilt, enamelled) showing hawks and falcons and dating probably from the first half of the 14th century.
In Guildhall and property of the Corporation (p. 193). Sc. †

Ph. : P. M. Goodchild, King's Lynn

CARUS-WILSON, TRADE OF WASH PORTS



A

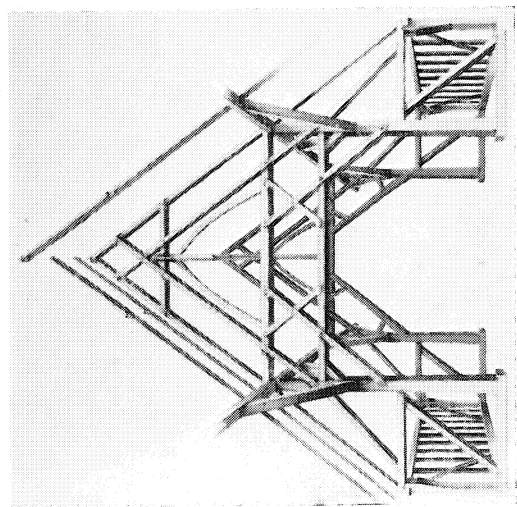
B

15th-CENTURY CARVED BENCH-ENDS, ST. NICHOLAS'S CHAPEL, KING'S LYNN, NORFOLK
(p. 199). Sc. $\frac{1}{3}$

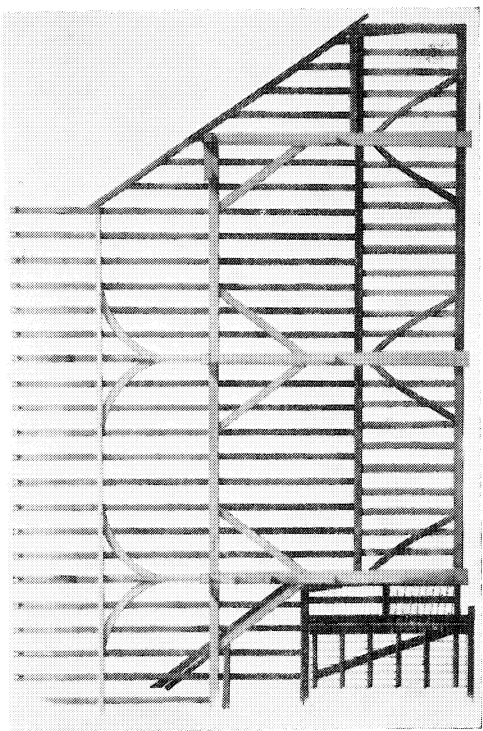
A. Ship with square-rigged mainmast and mizzen with lateen sail

B. Single-masted ship above three kipped herrings and tracery design

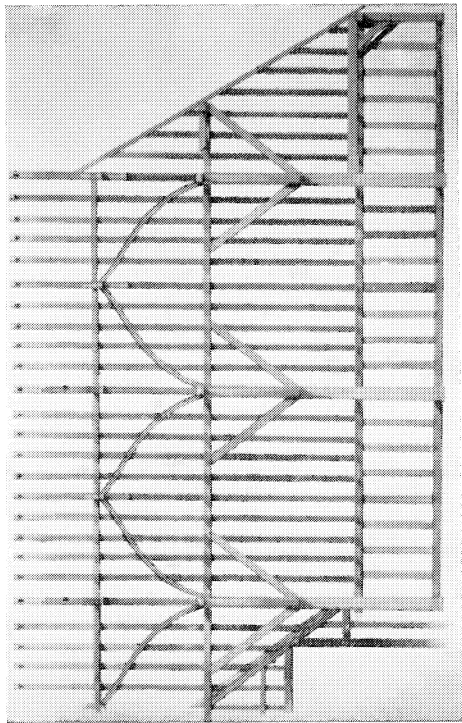
Ph. : Victoria and Albert Museum, Crown Copyright Reserved



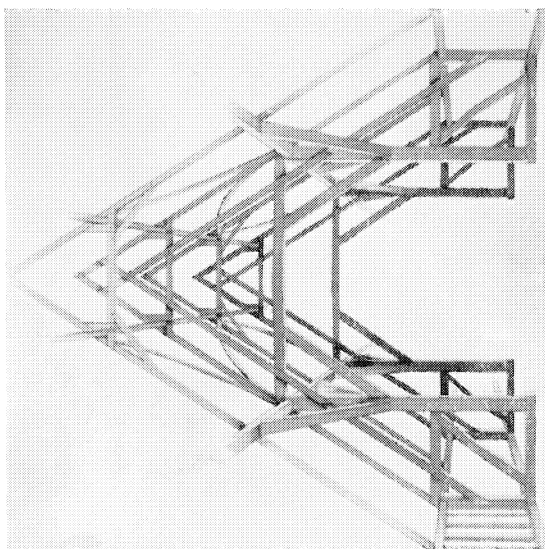
A



B



C



D

CRESSING TEMPLE, ESSEX (pp. 241 ff.)

A. Perspective of two transverse frames of barley-barn

B. Side-elevation of half-length of barley-barn, sectioned on line of ridge

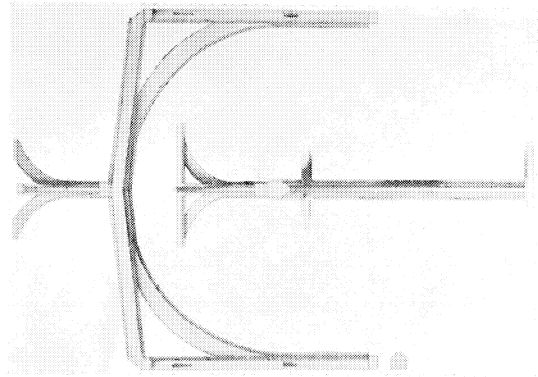
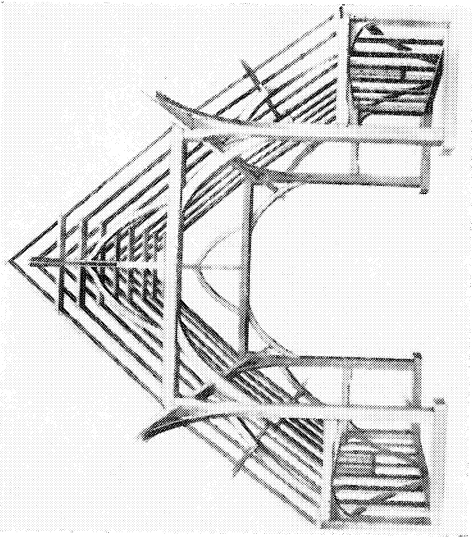
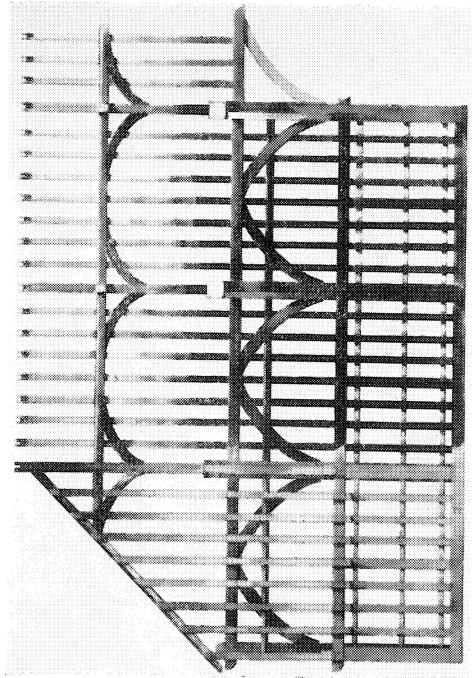
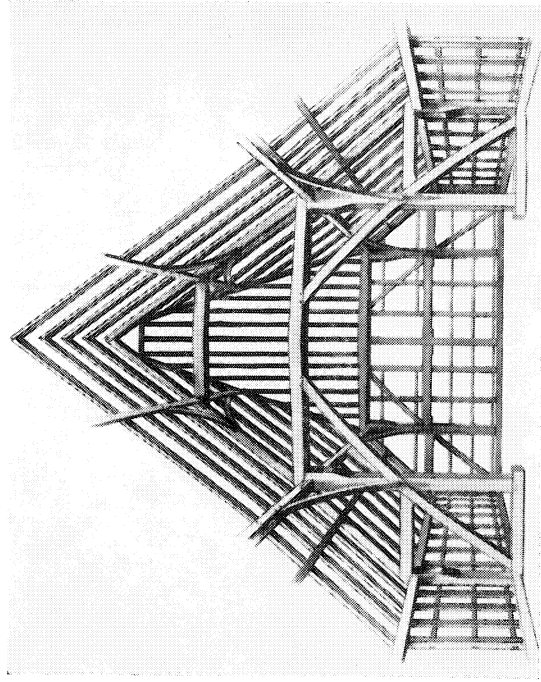
C. Side-elevation of half-length of wheat-barn, sectioned on line of ridge

D. Perspective of two transverse frames of wheat-barn

Plin.: J. E. Kimber

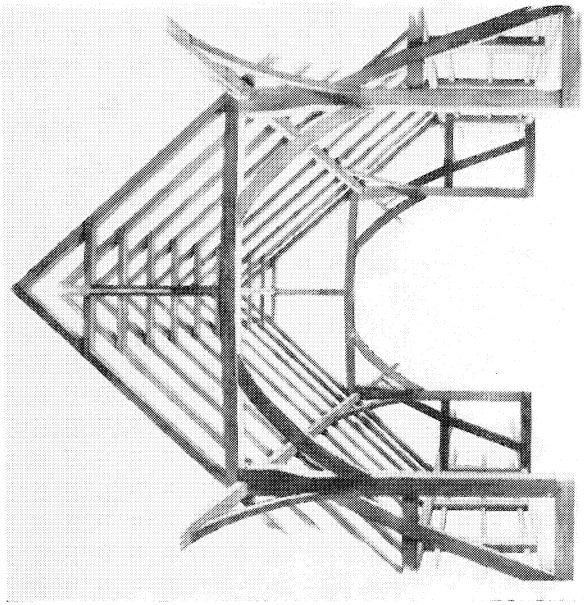
HEWETT, STRUCTURAL CARPENTRY

MEDIEVAL ARCHAEOLOGY, VOL. VI-VII (1962-3)

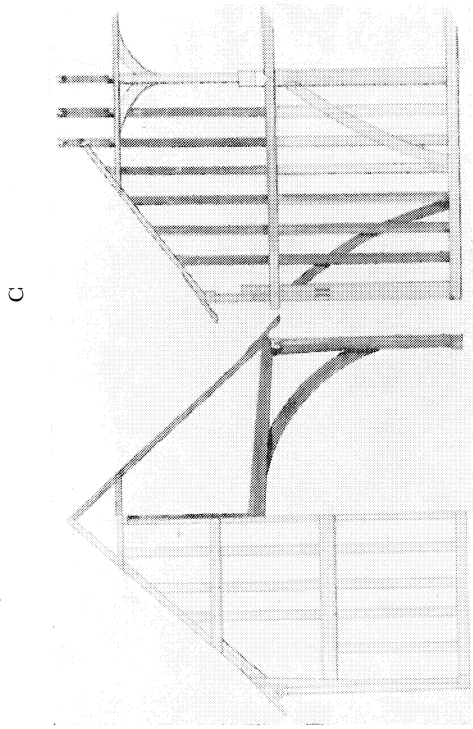


TIMBER-FRAMED BUILDINGS IN ESSEX

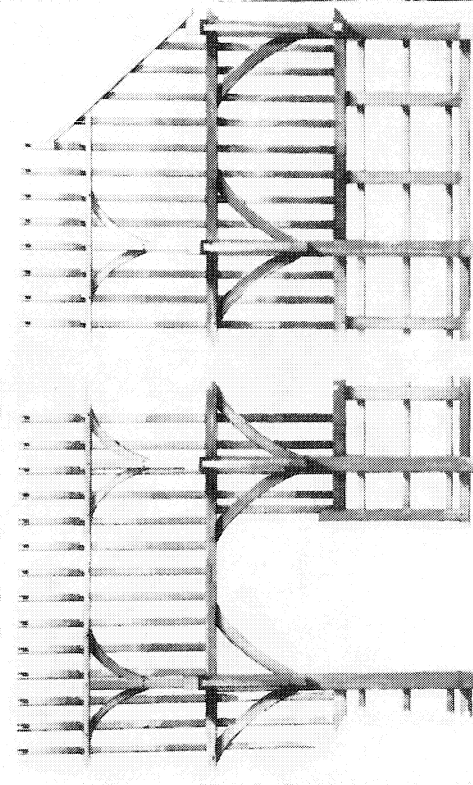
A. Prior's hall barn, Widdington: perspective of two transverse frames (p. 246 f.)
 B. Mallbrooks farm barn, Mountnessing: transverse frame with moulded timbers (p. 250 f.)
 C. Monks' barn, Netteswellbury: perspective showing one end-frame (p. 247 f.)
 D. Monks' barn, Netteswellbury: side-elevation of half-length, partly sectioned (p. 247 f.)



A



C



B

TIMBER-FRAMED BUILDINGS IN ESSEX

A-C. Uppminster hall barn (p. 248 f.). A. One end-frame. B. Side-elevation sectioned on line of ridge, showing one end-frame and evidence for 'overthrown eaves'.
 C. Perspective of two transverse frames
 D. Ladylands barn, Good Easter (p. 252 f.). On l., end-frame and transverse frame; on r., side-elevation partly sectioned, showing twin-tenons through corner-post
 Photo: J. E. Kimber



A



B

TIMBER-FRAMED BUILDINGS IN ESSEX

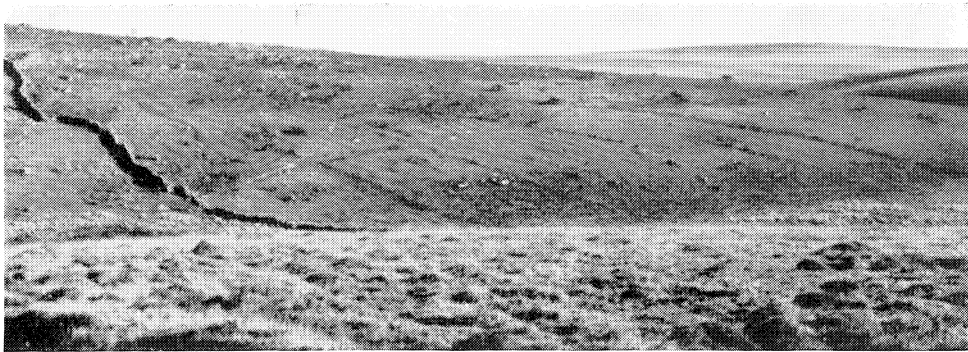
- A. Walker's manor house barn, Farnham: principal post-head with twin-tenons entering the tiebeam's soffit (p. 252)
- B. Wheat-barn, Cressing Temple: scarf-joint used for the top-plate (pp. 244, 255)

Plh.: C. A. Hewitt

PLATE XXVII



A



B



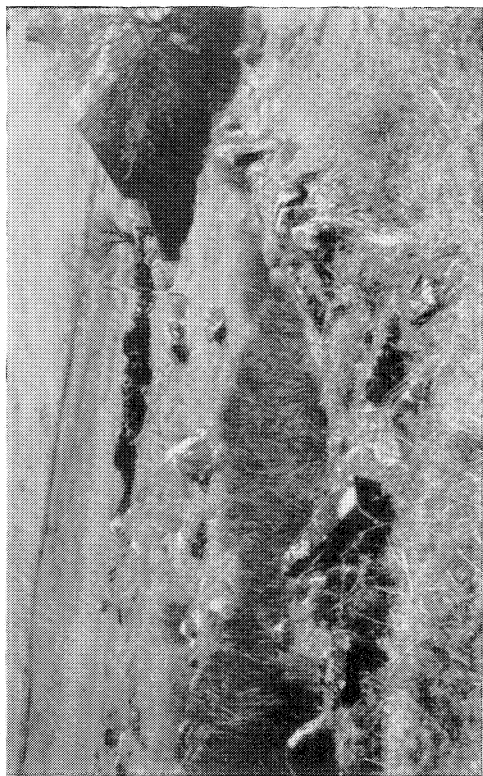
C

GARROW TOR, CORNWALL

A. View looking across marsh of river De Lank (p. 272)
C. Lazy-beds on S. running under marsh (p. 278)

B. Fields on SW. side. (p. 278)

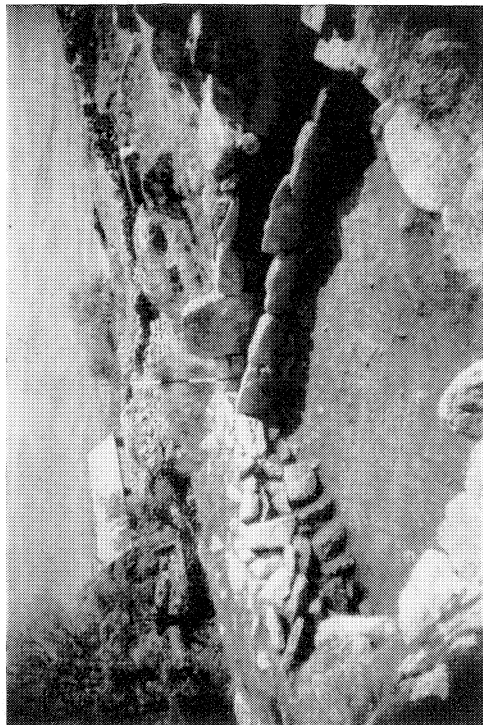
*Plh.: A, D. Dudley
B, R. H. Corfield
C, M. Bizley*



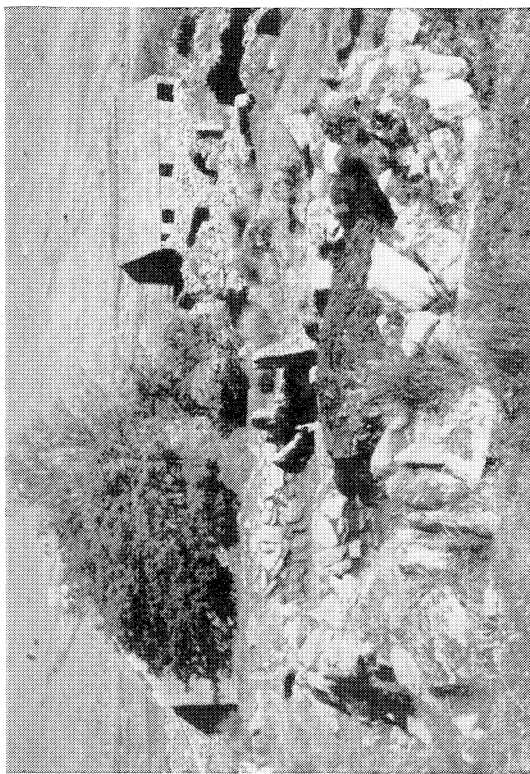
A



B



C



D

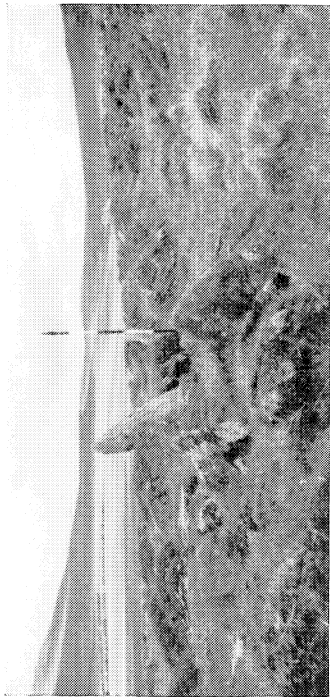
PLATFORM-HOUSE, GARROW TOR, CORNWALL (pp. 273 ff.)

A. Site before excavation

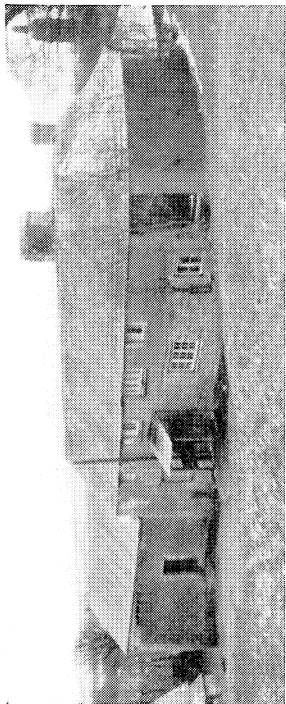
B. Hearth

C. Manger

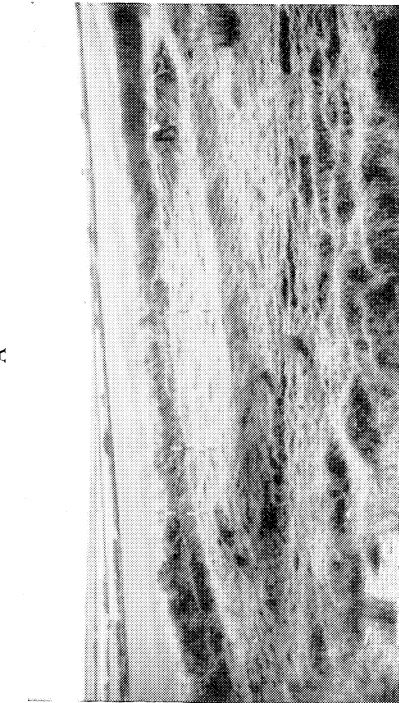
D. Site in relation to 'modern' farmhouse
*Plth.: A, B, C, D, Dudley
D, C, Woolf*



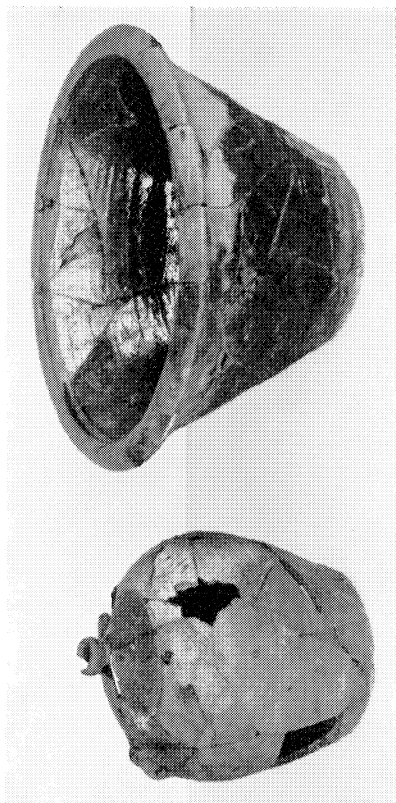
A



C



B



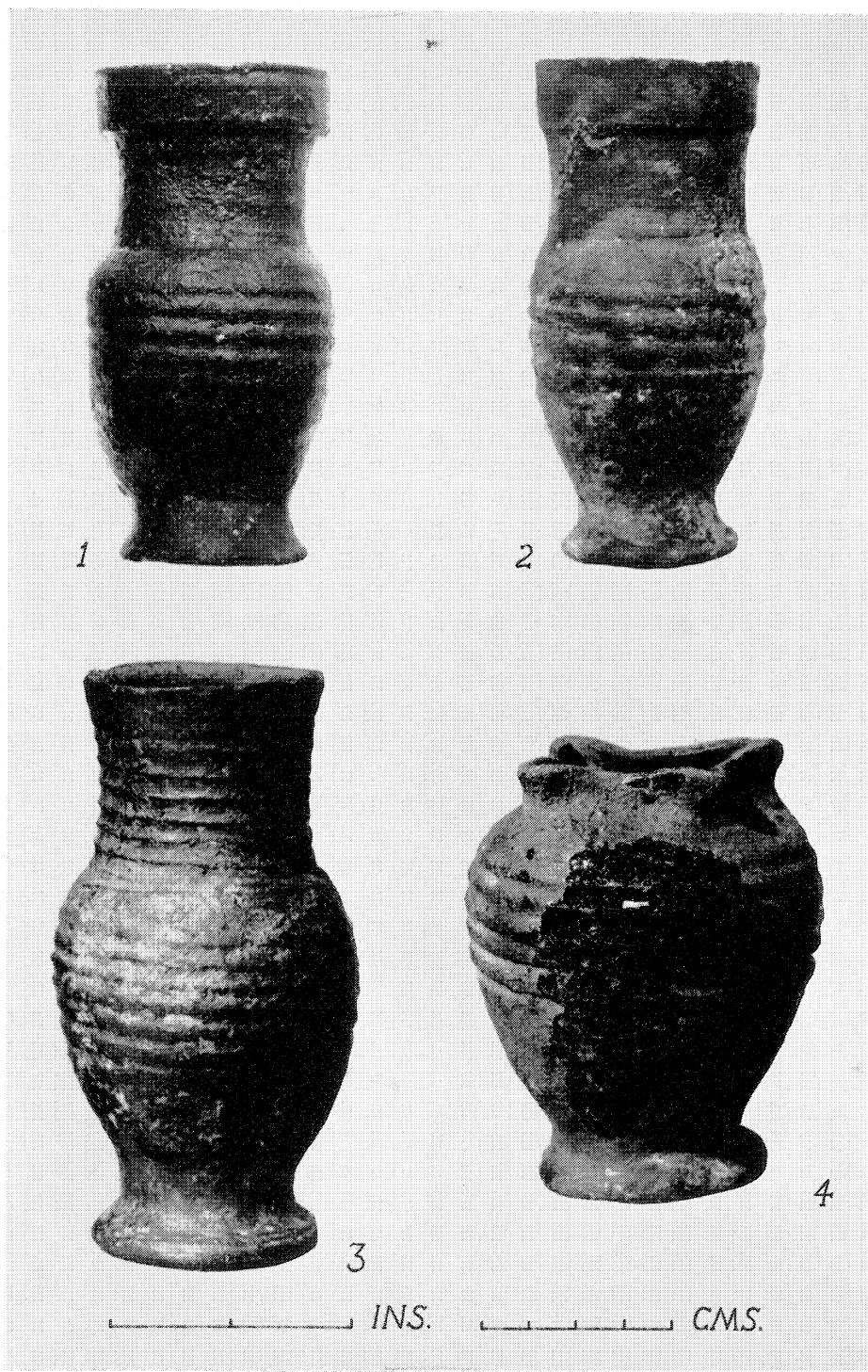
D

A. GARROW TOR, CORNWALL. Boundary wall of settlement (p. 273)
B. Platform-house at VENDOWN, MINSTER, CORNWALL. (p. 283 f.)

C. Farmhouse at EAST DIZZARD, ST. GENNYS, CORNWALL. (p. 282)
D. GARROW TOR, CORNWALL. 1. Post-medieval costrel (p. 293).
2. Eighteenth-century buzza (p. 293). Sc. c. $\frac{1}{6}$

*Phis.: A, B, D, Dudley
C, D, C. Woolf*

PLATE XXX

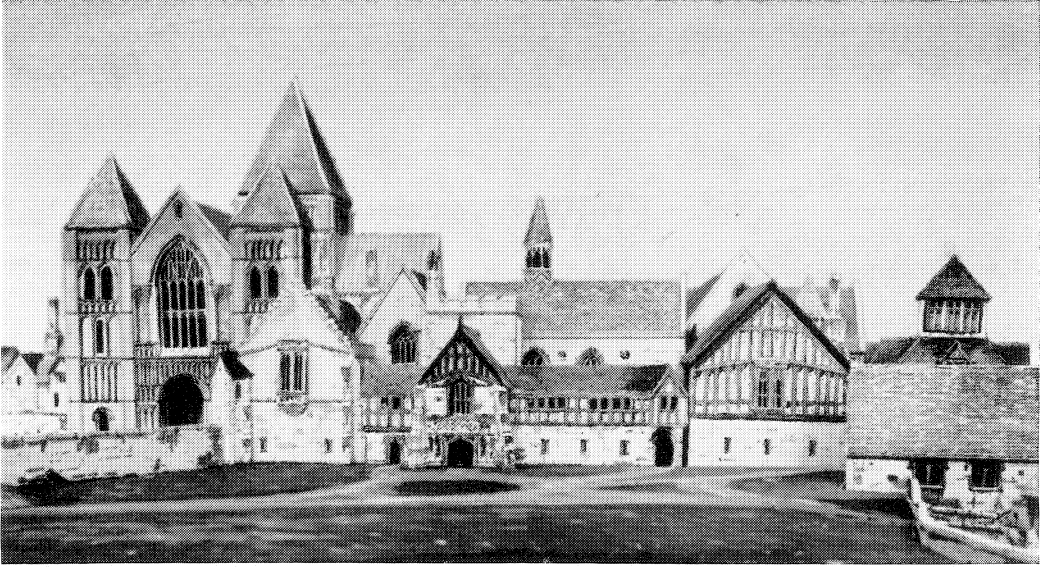


MEDIEVAL STONEWARE IMPORTED FROM THE RHINELAND (pp. 298 ff.). Sc. $\frac{3}{8}$

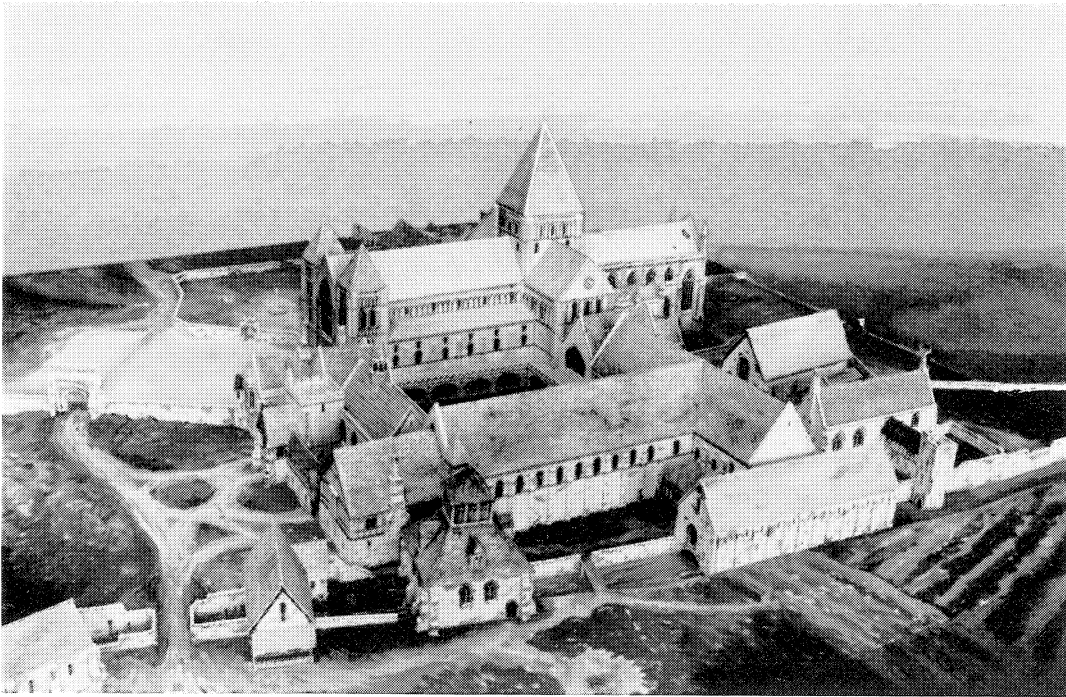
1-2, from Oxford; 3-4, probably from Cambridge

Phh.: 1-2, Ashmolean Museum
3-4, L. P. Morley

PLATE XXXI



A



B

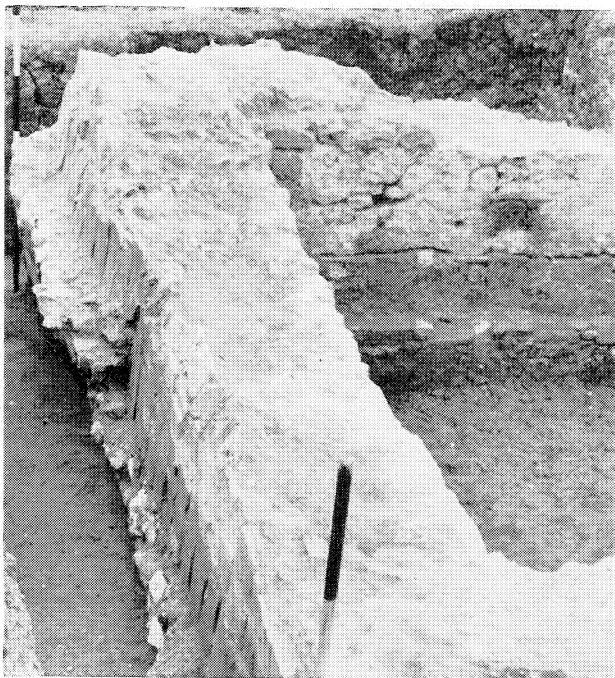
MODEL OF CASTLE ACRE PRIORY (pp. 300 ff.)

A. View of W. end of church and W. face of W. range

B. 'Aerial' view of claustral buildings from SW.

*Ph. : Ministry of Public Building and Works
Crown Copyright Reserved*

PLATE XXXII



A



B

A. NORTHOLT, MIDDLESEX: 14th-CENTURY CELLAR (p. 333)

B. HOUNDTOR DOWN, DEVON: 13th-CENTURY LONG-HOUSE (pp. 341, 343)

*Ph.: A, M. J. Godliman
B, E. Marie Minter*