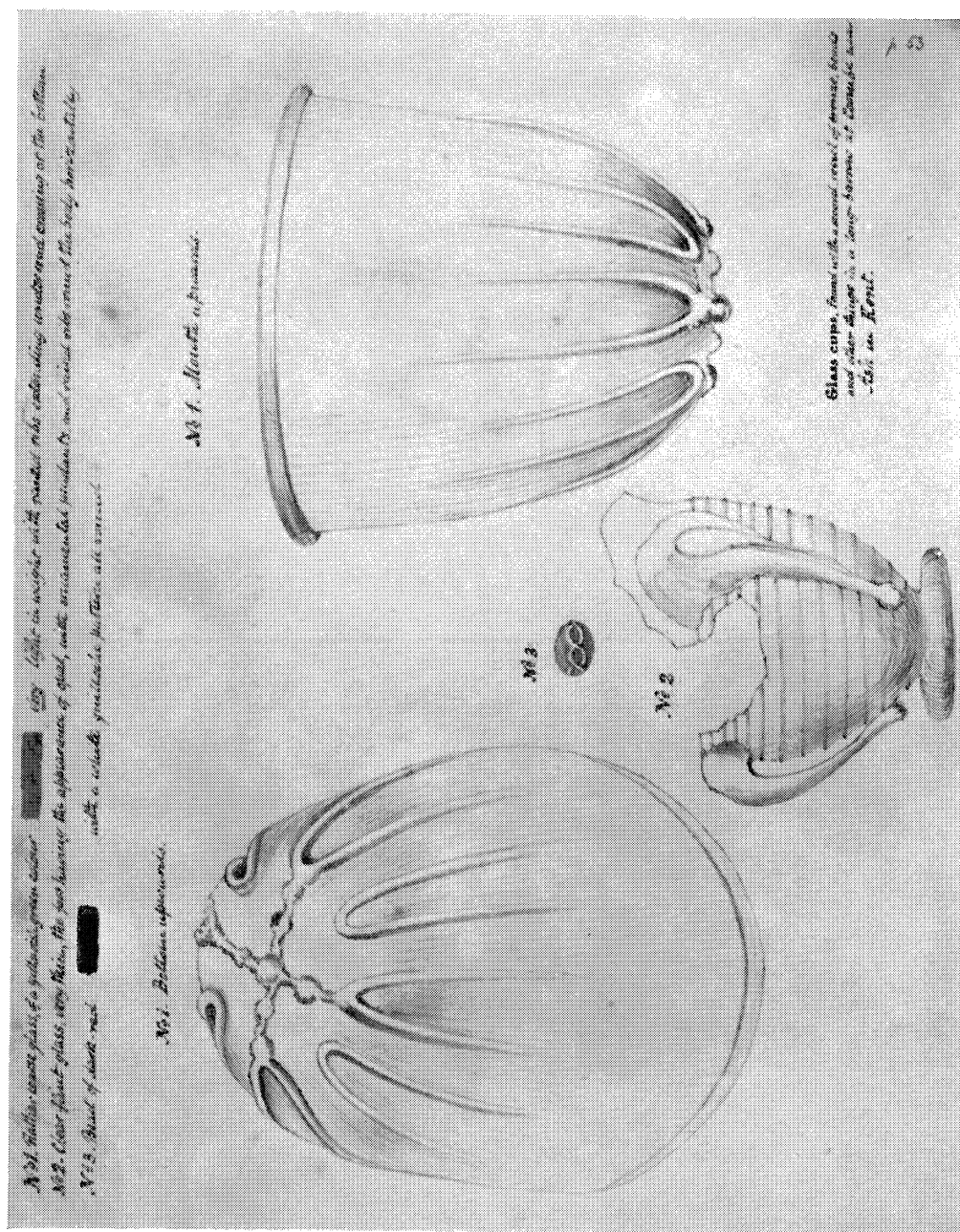


SAXON REMAINS FROM COMBE, KENT.

SAXON REMAINS FROM COOMBE, KENT (p. 2). Sc. $\frac{1}{4}$

(after Roach Smith, *Coll. Antiq.*, II, pl. xxxviii)

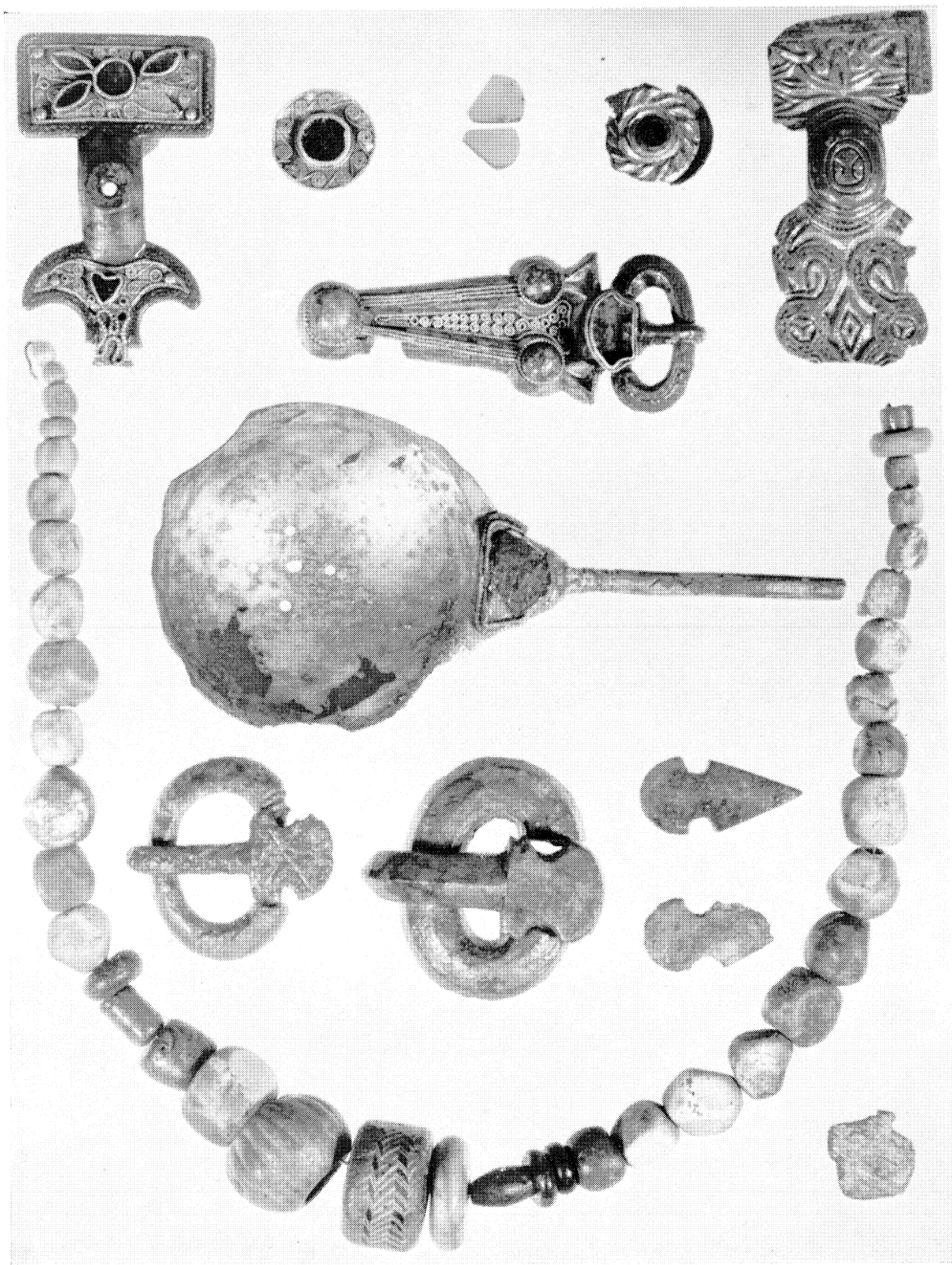
Ph. : British Museum



GLASS VESSELS AND BEAD FROM COOMBE, KENT (p. 2). Sc. $\frac{2}{4}$

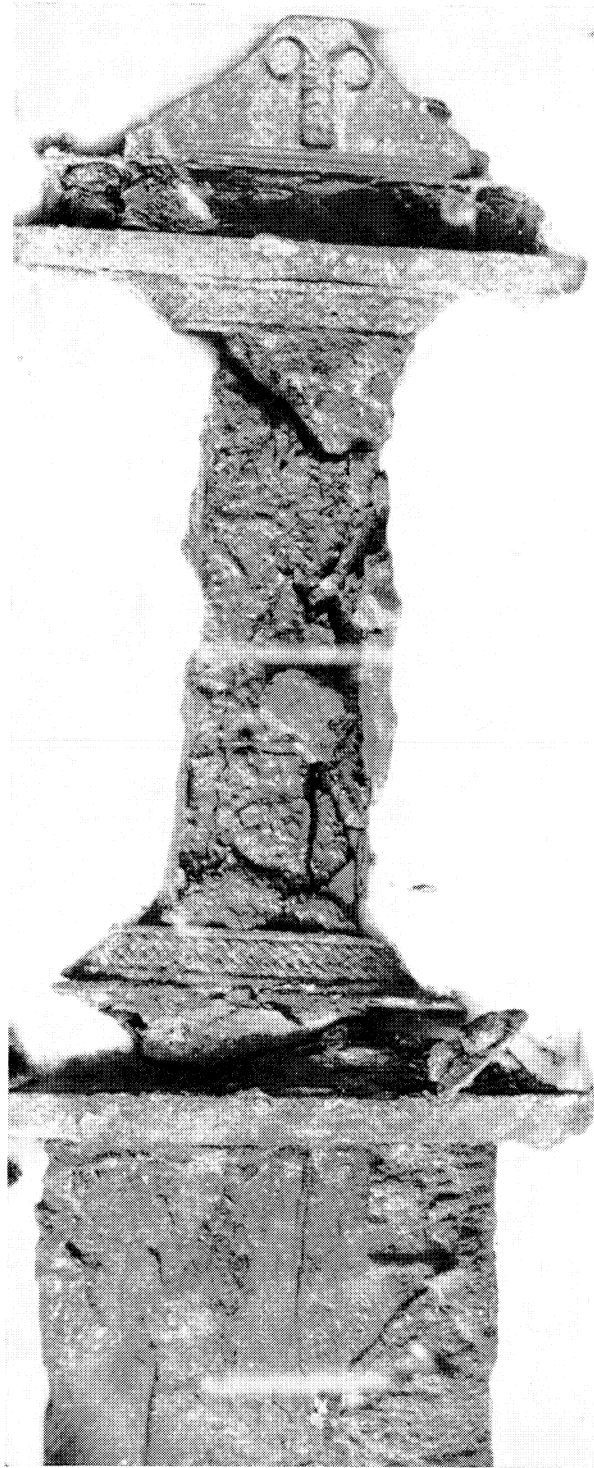
(after MS. drawing by J. Y. Akerman)

Ph.: British Museum



GRAVE-GOODS FROM BARROW AT STODMARSH, KENT (p. 11). Sc. $\frac{1}{1}$ Ph.: *British Museum*

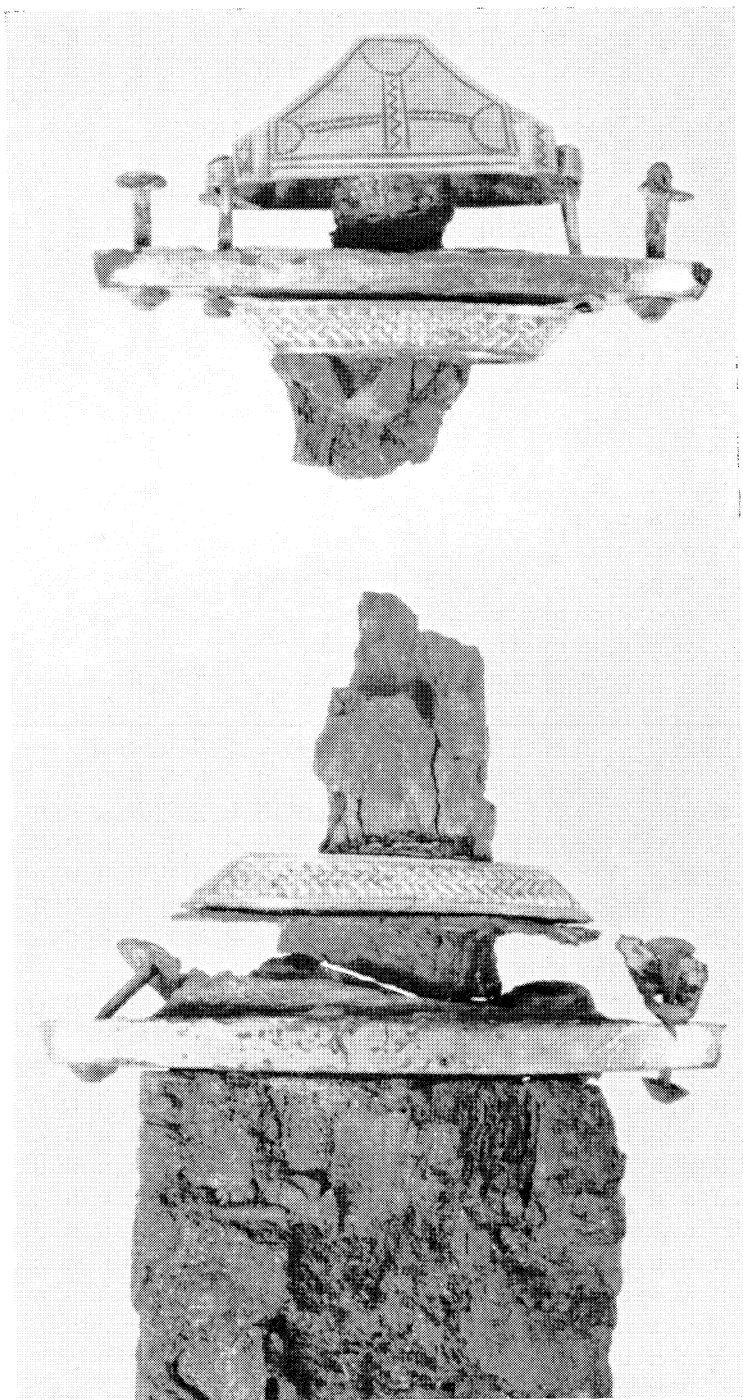
PLATE IV



COOMBE, KENT
Front view of sword before cleaning (p. 22). Sc. $\frac{1}{4}$

Ph.: Sir Thomas Kendrick

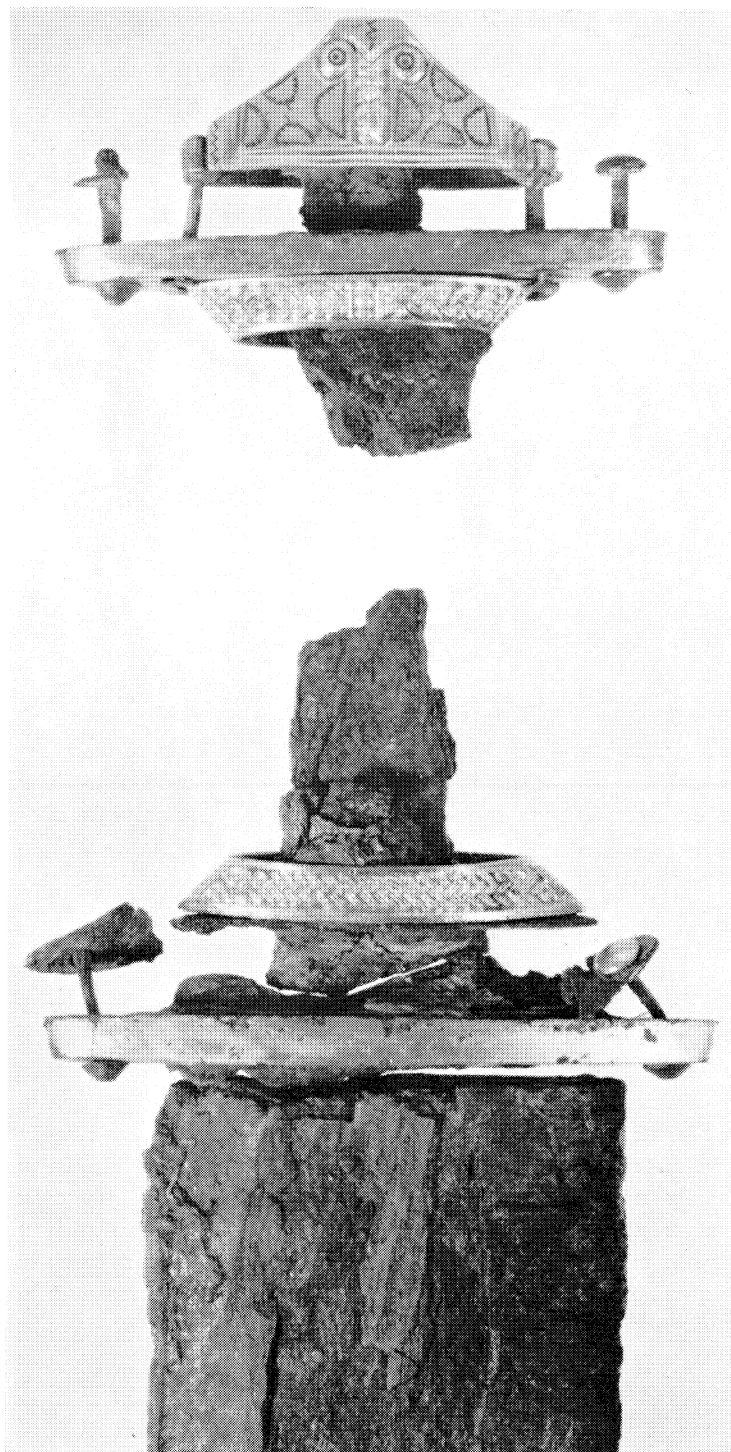
PLATE V



COOMBE, KENT

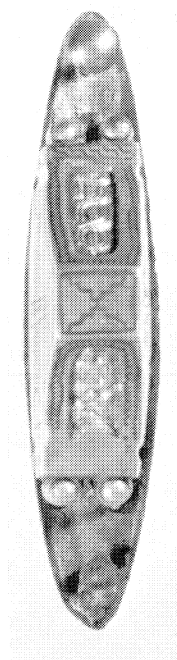
Back view of sword after cleaning (p. 16 ff.). Sc. $\frac{1}{1}$

Ph.: British Museum



A

COOMBE, KENT

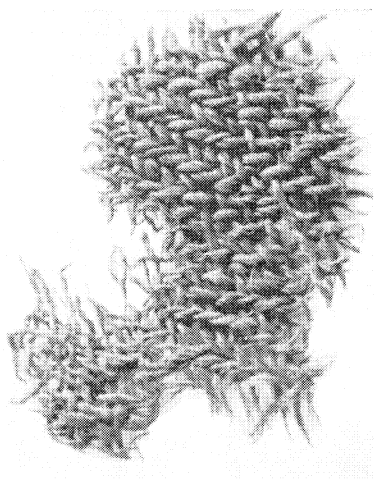


B

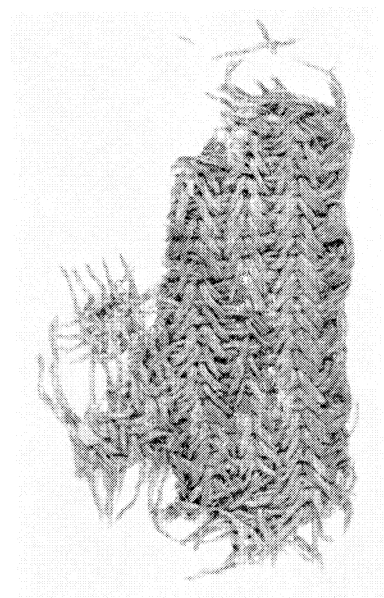
A. Front view of sword after cleaning (p. 16 ff.). Sc. $\frac{1}{4}$. B. Pommel-top of sword after cleaning (p. 18). Sc. $\frac{1}{4}$

Phh. : British Museum

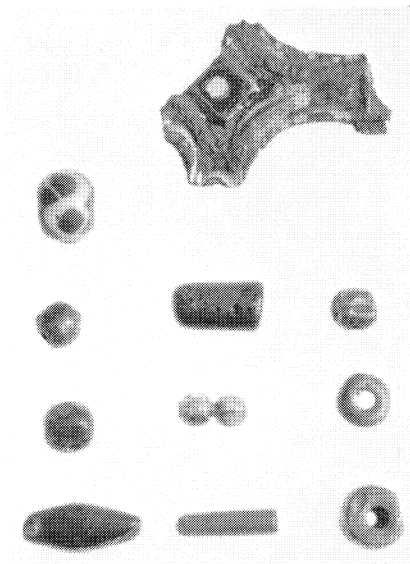
PLATE VII



C



A



D

B

COOMBE, KENT

A, B. Two views of tablet-weave finishing border (textile 2, a) (pp. 20, 38). Sc. $\frac{2}{1}$

C. Broken diamond twill showing mistakes (textile 2, b) (pp. 20, 38). Sc. $\frac{2}{1}$

D. Fragment of square-headed brooch and beads (p. 20 f.). Sc. $\frac{1}{1}$

Plh.: A-C, *Hallam Ashley, F.R.P.S.*; D, *British Museum*

PLATE VIII



A



B

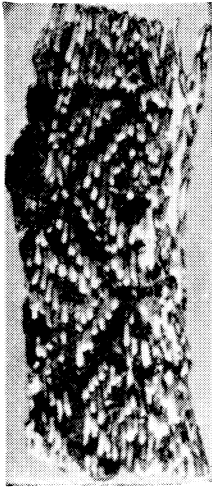
GLASS VESSELS FROM COOMBE,
KENT (p. 21). Sc. $\frac{1}{4}$

A. Palm-cup.

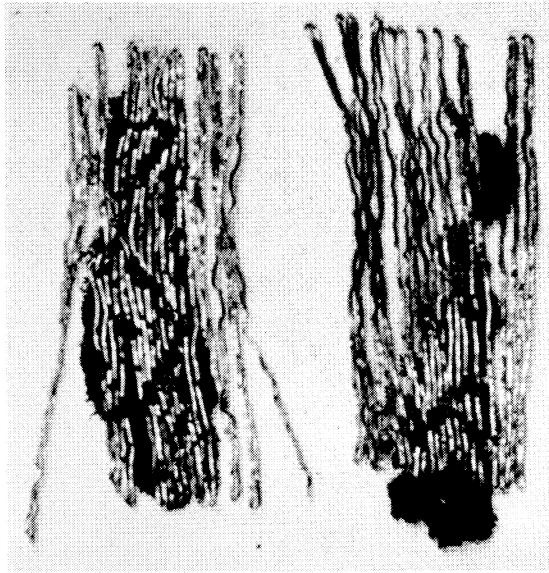
B. Claw-beaker

Phh.: British Museum

PLATE IX

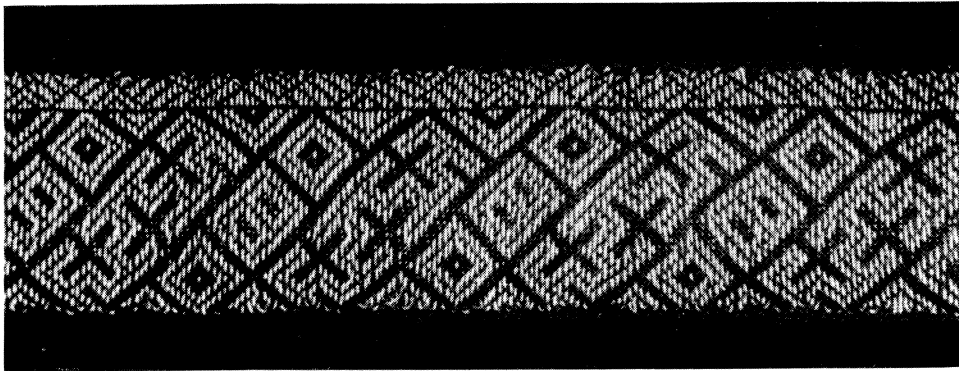


A



B

C



D



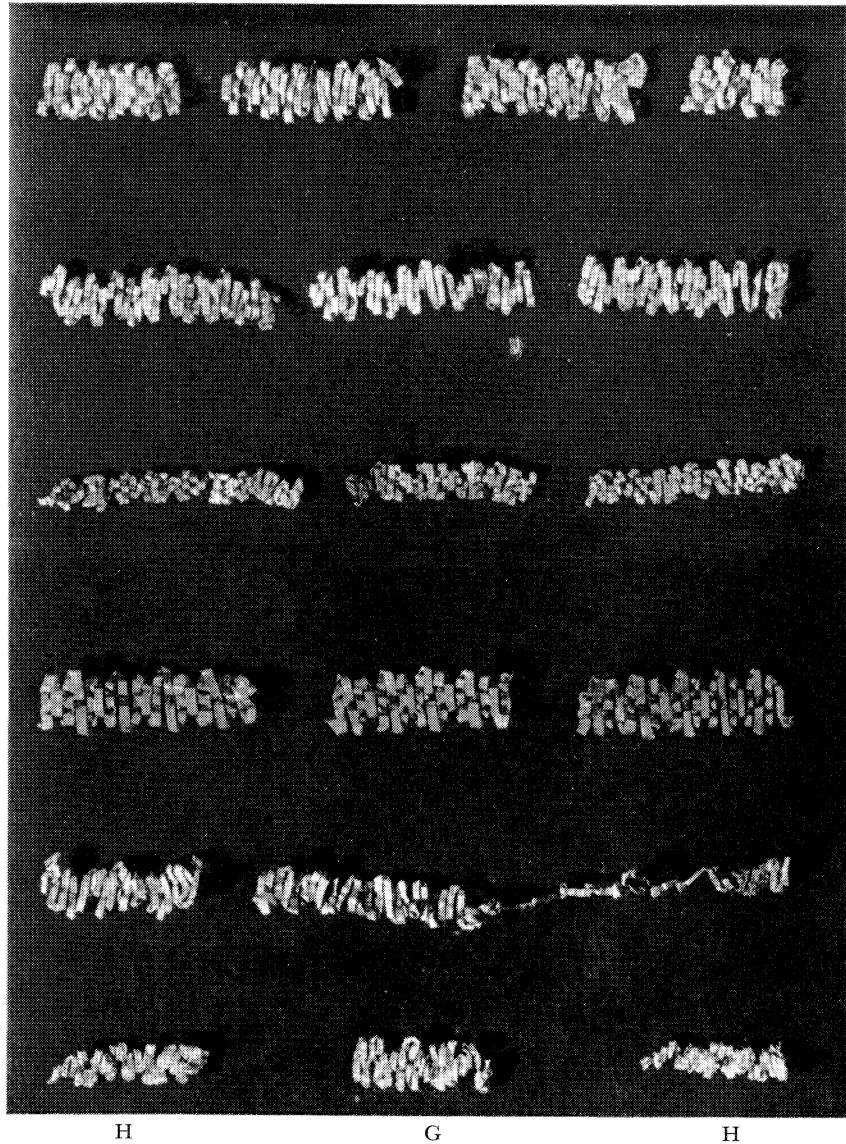
E

GOLD BRAIDS FROM TAPLOW, BUCKS. (A-D), AND KÖLN, GERMANY (E)

- A. Better fragment of wide braid (no. 1; pp. 44, 66 f.) (after Baldwin Brown (1915), III, pl. lxxxiv, 1); B. Same as now preserved; C. Second fragment of wide braid. Sc. $\frac{2}{1}$; D. Mrs. Crowfoot's woven reconstruction. Sc. $c. \frac{1}{1}$
E. Fragment from Köln, St. Severinus grave 73 (no. 53, p. 78) (after Fremersdorf (1941-2), pl. liv, 11). Sc. $\frac{2}{1}$

Phh.: B, C, British Museum; D, the late M. B. Cookson

PLATE X



KENTISH GOLD BRAIDS. Sc. $\frac{1}{1}$

A-E. BIFRONS. A, grave 21 (no. 2, p. 67); B, (no. 4, p. 68); C (no. 6, pattern A, p. 68);
D (no. 6, pattern B, p. 68); C/D (no. 6, patterns A and B combined, p. 68); E (no. 5, p. 68)
F-H. SARRE. F, grave 90 (no. 17, p. 70 f.); G, grave 4 (no. 16, p. 70); H, grave 94 (no. 18, p. 71)

Ph.: Oxford University Institute of Archaeology



A



B

EARLY CHRISTIAN STELAE FROM WHITHORN, WIGTOWNSHIRE (pp. 110 f., 114)

A. The 'Latinus' stone, 5th century; B. The 'St. Peter' stone, 7th century

Phh.: Ministry of Public Building and Works: Crown copyright reserved

PLATE XII



A



B

10TH- TO 11TH-CENTURY SCULPTURED CROSSES FROM SW. SCOTLAND (p. 124 f.)

A. Whithorn, Wigtownshire; B. Barochan, Renfrewshire

Phh.: Ministry of Public Building and Works: Crown copyright reserved

PLATE XIII



A

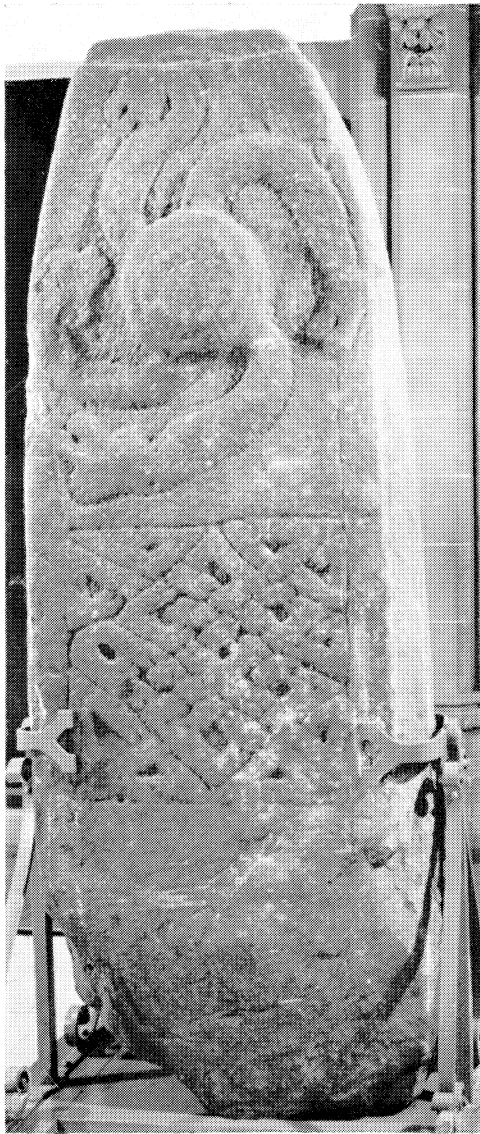


B

GOVAN, RENFREWSHIRE (p. 125 f.)

A. Sarcophagus 'The Tomb of St. Constantine'; B. Hog-back tomb-cover. Both 10th to 11th century

Ph. : Ministry of Public Building and Works : Crown copyright reserved



A



B

GOVAN, RENFREWSHIRE (p. 125 f.)

A. Cross-slab; B. Cover-slab, Both 10th to 11th century

Phh.: Ministry of Public Building and Works: Crown copyright reserved

PLATE XV

A



B



PHASE-III ALTAR, ARDWALL ISLE, KIRKCUDBRIGHT (p. 136)

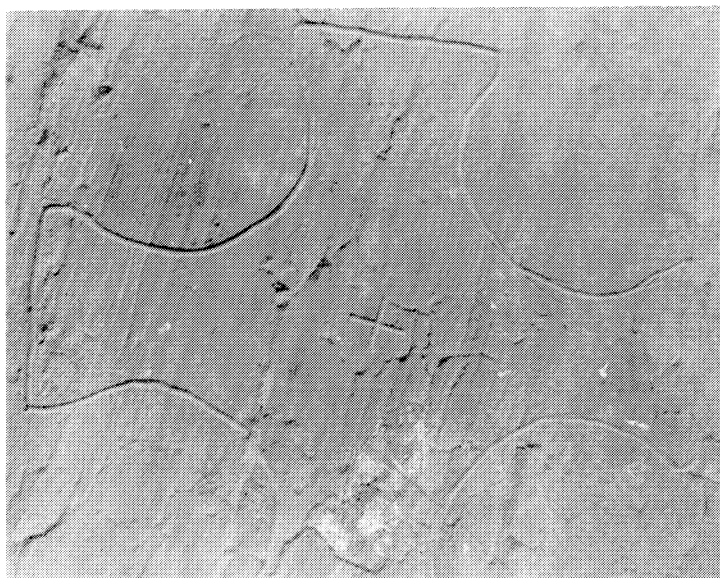
A. As first uncovered, showing rectangular patch of upper shell-sand filling; B. Partly cleared showing human bones, collapsed corner-post and rectangular slab

Phh.: K. White

PLATE XVI



A



B

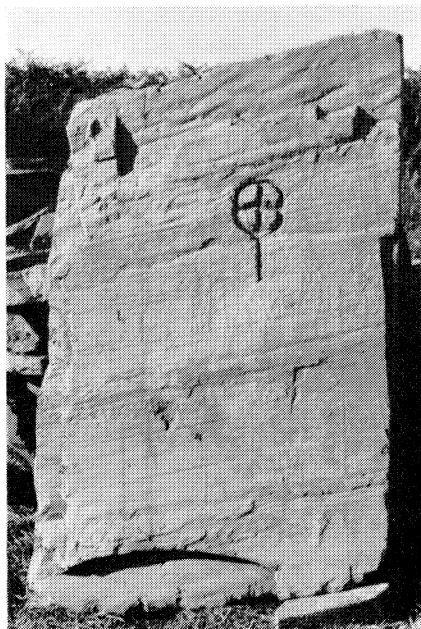
ARDWALL ISLE, KIRKCUDBRIGHT

A. SE. corner of phase-III chapel, from inside, showing method of construction (p. 134)

B. Cross-slab no. 3 (FIG. 30, B): detail of head, with tiny central cross (p. 151)

Phh.: K. White

PLATE XVII



A



B



C



D

ARDWALL ISLE, KIRKCUDBRIGHT

A. Cross-slab no. 4 (p. 152 f.); B. Cross-slab no. 4, detail of pocked cross (p. 152 f.); C. Butt of cross no. 5, showing pocked shaping of tenon (p. 152 f.); D. Cross-slab no. 6, with wheel-cross and inscriptions (pp. 153 ff.).

Phh.: K. White

PLATE XVIII



A



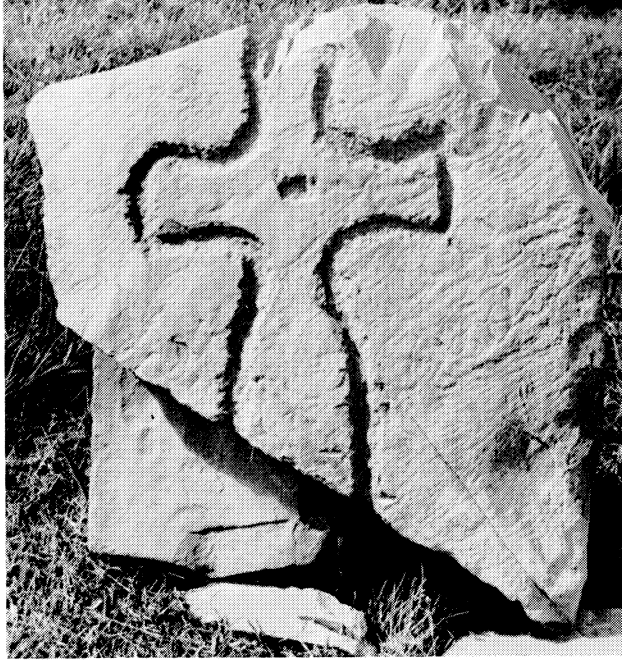
B

CROSS-SLAB NO. 6 ('CUDGAR' STONE), ARDWALL ISLE, KIRKCUDBRIGHT (pp. 153 ff.)

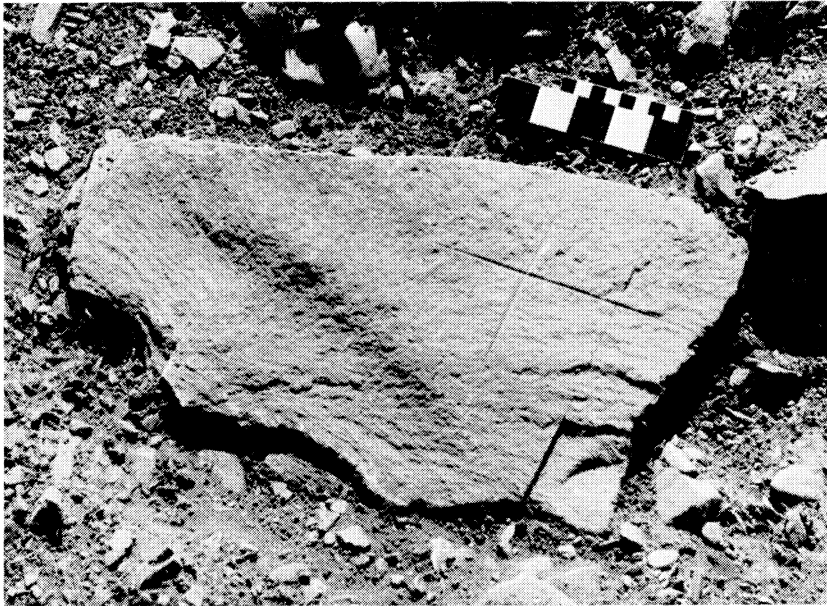
- A. Detail of upper (main) inscription
B. Detail of smaller and lower inscription

Plh.: K. White

PLATE XIX



A



B

ARDWALL ISLE, KIRKCUDBRIGHT

A. Cross-slab no. 13, showing use of broad poking (p. 152 f.)

B. Cross-incised grave-marker no. 7, *in situ* (p. 158)

Phh.: K. White



A



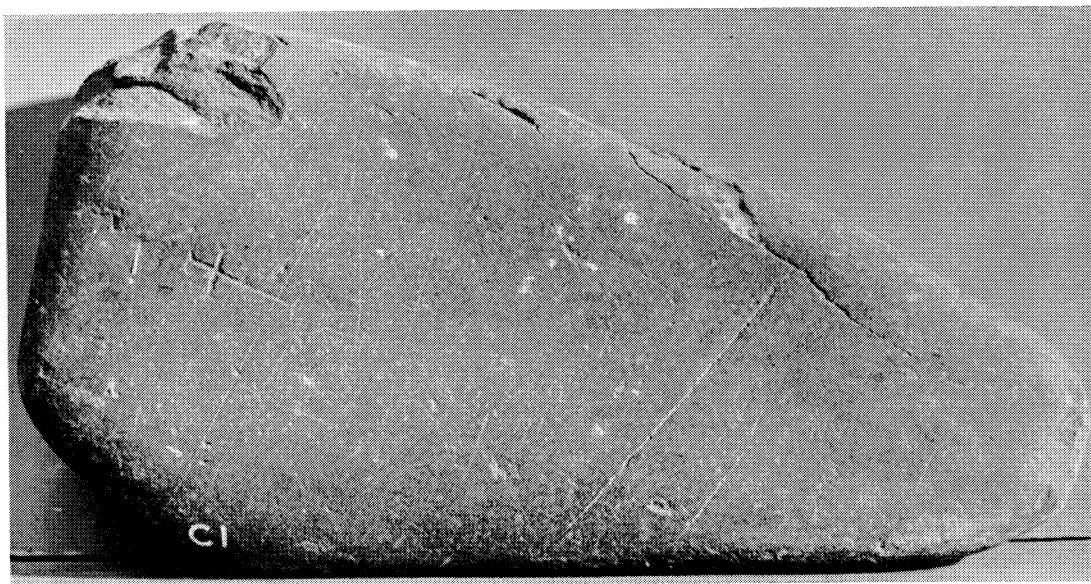
B

STONE NO. 11, ARDWALL ISLE, KIRKCUDBRIGHT (p. 163 f.)

A. Detail of two figures; B. Knife-point graffiti on upper part

Phh.: K. White

PLATE XXI



A



B

PHYSGYLL CAVE, NEAR WHITHORN, WIGTOWNSHIRE

- A. Beach slab, 11½ in. long, with incised cross (no. c. 1, FIG. 32 and p. 159, in Whithorn Museum; cf. no. 7 from Ardwall Isle, PL. XIX, B)
- B. Detail of cross-slab, 11 in. wide, showing use of broad pocking (no. c. 11, p. 153, in Whithorn Museum; cf. no. 13 from Ardwall Isle, PL. XIX A)

Phh.: K. White



ARDWALL ISLE, KIRKCUDBRIGHT

Phase-I rock-cut hollow (FIG. 27; p. 141), showing paving-slabs, inserted phase-II post-hole F (with ranging-pole), legs of phase-III skeleton XVIII behind F and, at bottom r., skull of phase-II skeleton XXVII resting on edge of paving-slabs

Ph.: K. White

PLATE XXIII



ARDWALL ISLE, KIRKCUDBRIGHT

Phase-III chapel from W. (pp. 131, 134 f.), showing altar, gullies by N. and E. walls, inserted graves and, in foreground, phase-III burials, with rock-cut hollow of phase I at bottom r.

Ph.: K. White

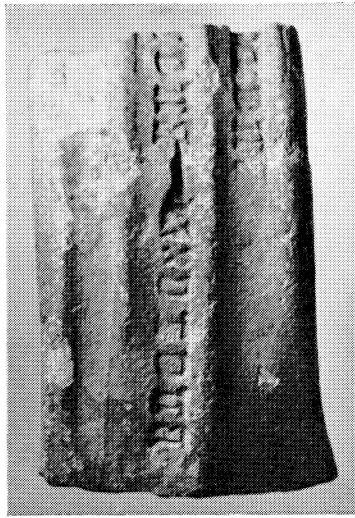


ARDWALL ISLE, KIRKCUDBRIGHT

Phase-II burial-area W. of chapel (FIG. 23; p. 138); skeleton xx on its left side at bottom l.

Ph.: K. White

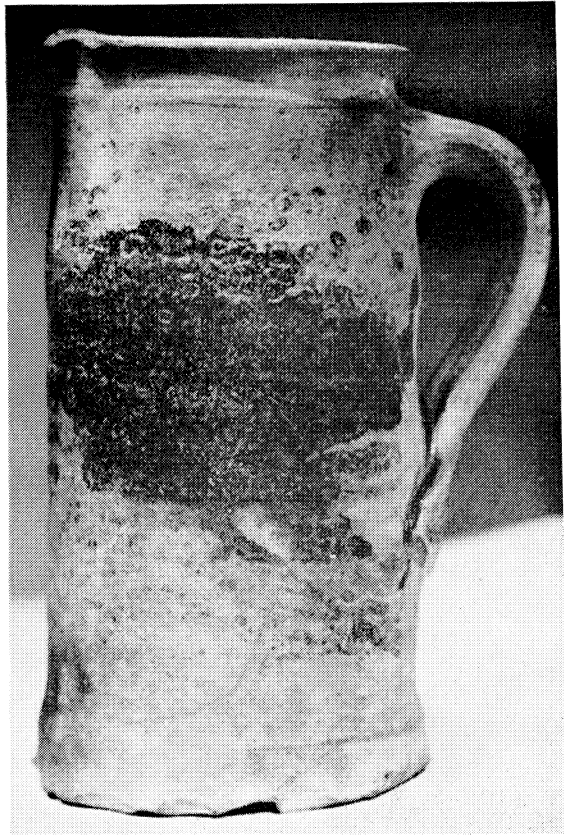
PLATE XXV



A



B



C

LATE MEDIEVAL JUGS WITH LETTERING

A. Abthorpe, Northamptonshire (pp. 233, 236; cf. FIG. 67). Sc. $\frac{2}{3}$

B, C. Hertford Street, Coventry (p. 233 f.; cf. FIG. 68). Sc. $\frac{1}{2}$

Phh.: A, Central Museum, Northampton

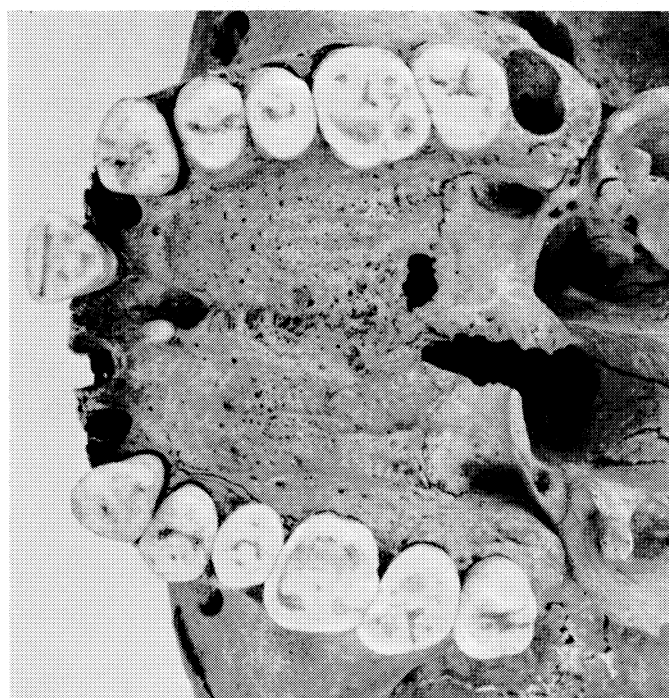
B-C, Herbert Art Gallery and Museum, Coventry

DUNNING, JUGS WITH LETTERING



DRAWING IN 14TH-CENTURY *BIBLIA PAUPERUM* (p. 238)
In Herzog August Bibliothek, Wolfenbüttel: Helmst, 35a, fol. 1r. Sc. c. 3

Ph.: Herzog August Bibliothek, Wolfenbüttel



A

A. Inhumation 1.

Osteitis and perforation of palate. An unerupted supernumary incisor is present (p. 243 f.).

B. Inhumation 3.

Radiograph of metacarpals and phalanges showing ankylosis of inter-phalangeal joint and early osteitis multiplex cystica (p. 244)

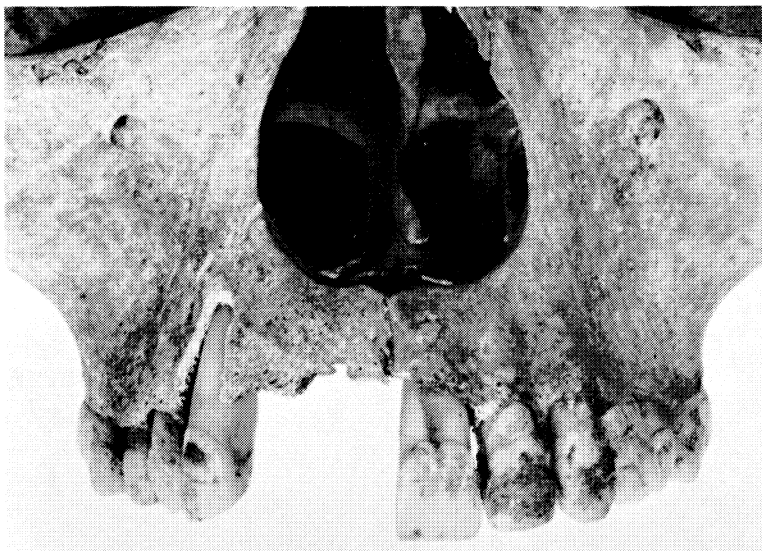
Plth.: A. *Hallam Ashley*
B. *M. Maxwell*



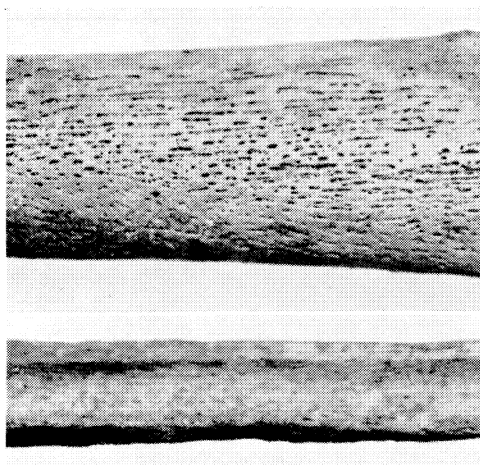
B

SOUTH ACRE, NORFOLK

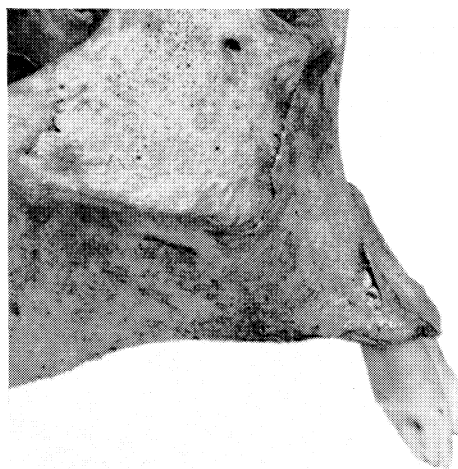
PLATE XXVIII



A



B

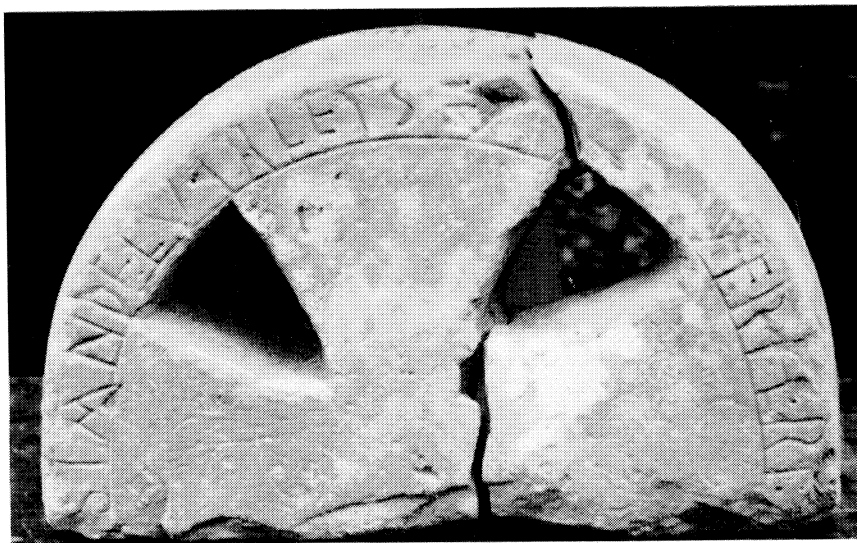


C

SOUTH ACRE, NORFOLK

A, B. Inhumation 8. A, absorption of alveolus of maxilla, exposing roots of incisor teeth; osteitis of conchae within nasal cavity; B, tibia and fibula, showing pitted, granular and thickened bony cortex (p. 245);
C. Inhumation 9. Absorption of anterior nasal spine (p. 245)

Phh.: Hallam Ashley



A



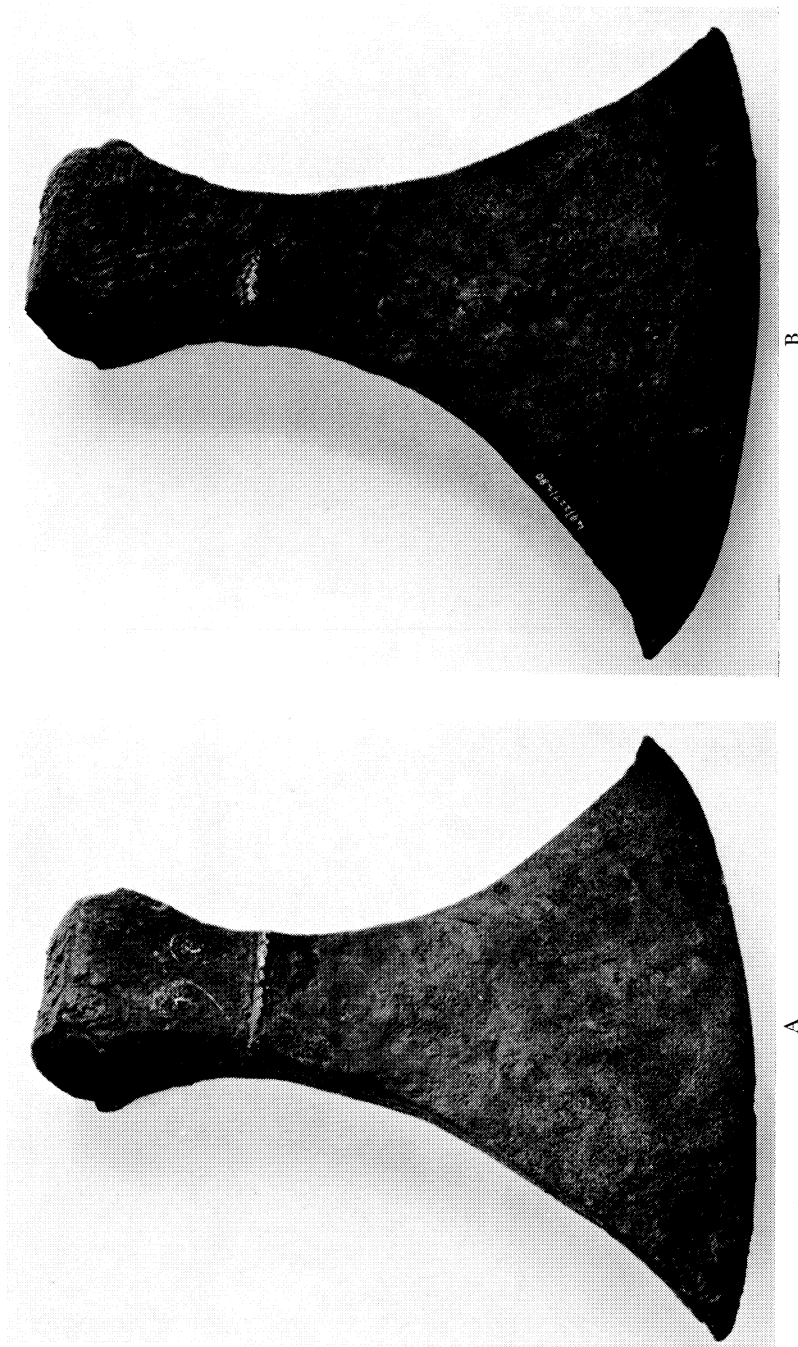
B

ALL HALLOWS CHURCH, BARKING-BY-THE-TOWER, LONDON (p. 249)

A. Upper part of inscribed Anglo-Saxon wheeled cross-head

B. Inscribed cross-head restored with shaft

*Phh: A, P. T. B. Clayton
B, R. I. Page*



COVENTRY, WARWICKSHIRE

A, B. Two views of decorated axe-head of Viking type (p. 251 f.). Sc. $\frac{1}{2}$

Phot: R. Sadler

PLATE XXXI



A



B

A, B. DURSLEY, GLOUCESTERSHIRE (p. 254)

A. Mill with clothier's house behind

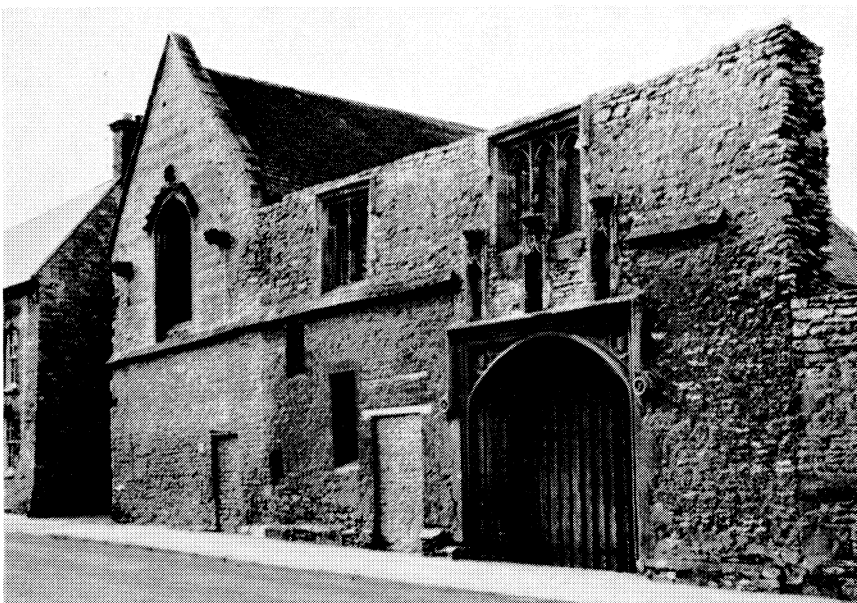
B. Gabled house of clothier

Phh: J. Tamm

C. HIGHAM FERRERS, NORTHAMPTONSHIRE

Gateway and E. end of S. range of the college (p. 255)

Ph: A. Thompson

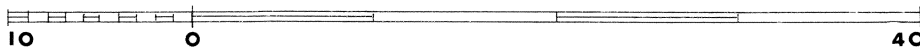


C

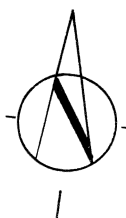


SCALES

FEET



METRES

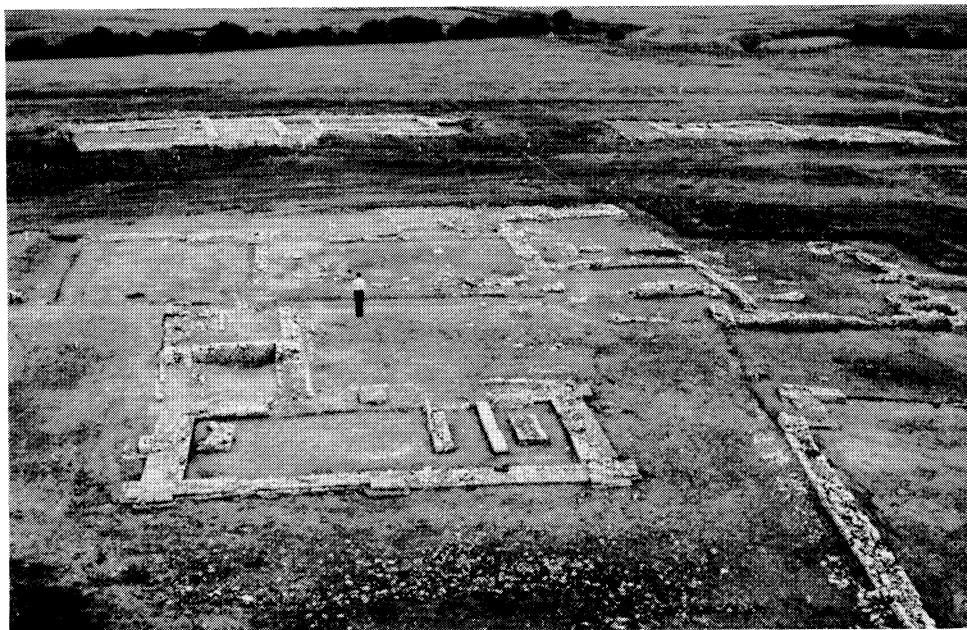


SOUTH WITHAM, LINCOLNSHIRE (p. 274 f.)

Vertical mosaic of chapel and warming-house of preceptory of Knights Templars. The advantages of vertical photogrammetry are clear when this mosaic is compared with PL. XXXIII, A, which was photographed by normal methods.

Ph.: Crown copyright reserved

PLATE XXXIII



A

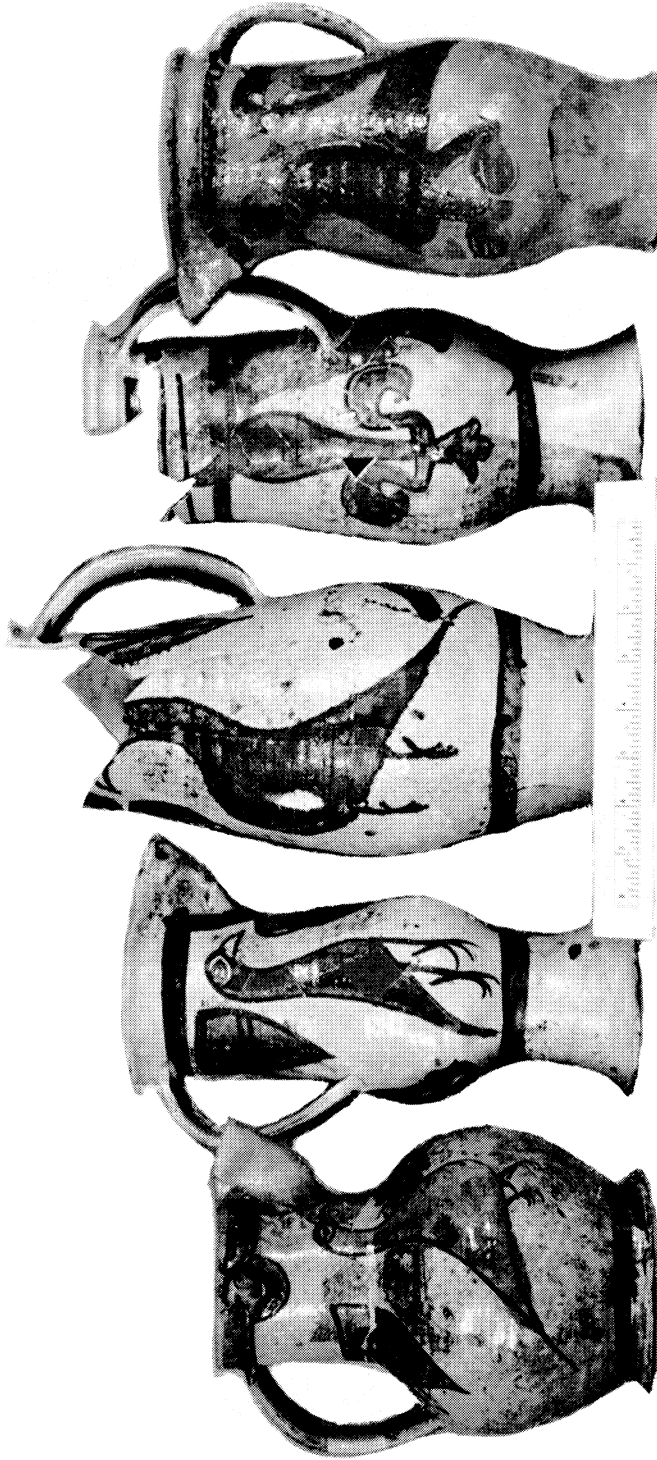


B

A. SOUTH WITHAM, LINCOLNSHIRE (p. 274 f.). General view of excavations looking N. over chapel and hall at main entrance, photographed from a normal photographic tower and to be compared with the vertical mosaic of PL. XXXII

B. RIPLINGHAM, YORKSHIRE (p. 314). View of 14th- to 15th-century house looking W. from upper end

*Phh: A, Crown copyright reserved
B, P. T. Norfolk*



CUCKOO LANE, SOUTHAMPTON (p. 291)

Group of jugs from late 13th-century subterranean store. They were imported from the Saintonge in SW. France. Sc. 4

THE SOCIETY FOR MEDIEVAL ARCHAEOLOGY

MONOGRAPH SERIES

A new series of monographs dealing with particular aspects of the archaeology of the British Isles between A.D. 400 and A.D. 1600.

1. G. Bersu and D. M. Wilson, *Three Viking Graves in the Isle of Man* (1966), price 40s.
2. F. W. B. Charles, *Medieval Cruck-Building and its Derivatives* (1967), price 40s.

Obtainable from Mrs. A. F. Morley, 'Orlay', Church Grove, Little Chalfont, nr. Amersham, Bucks.

The next monograph in the series will be:

3. P. A. Rahtz, *Excavations at King John's Hunting Lodge, Writtle, Essex, 1955-57.*

Other possible future titles are: J. G. Hurst, *Excavations at Wharram Percy, E.R. Yorks., 1950-1960*; H. E. Jean Le Patourel, *Some Medieval Moated Sites in Yorkshire*; P. Mayes, *The Preceptory of the Knights Templars at South Witham, Lincs.*; P. Mayes, *13th- to 16th-century Pottery-Kilns at Nuneaton, Warws.*; J. N. L. Myres, *The Anglo-Saxon Cemetery at Illington, Norfolk.*