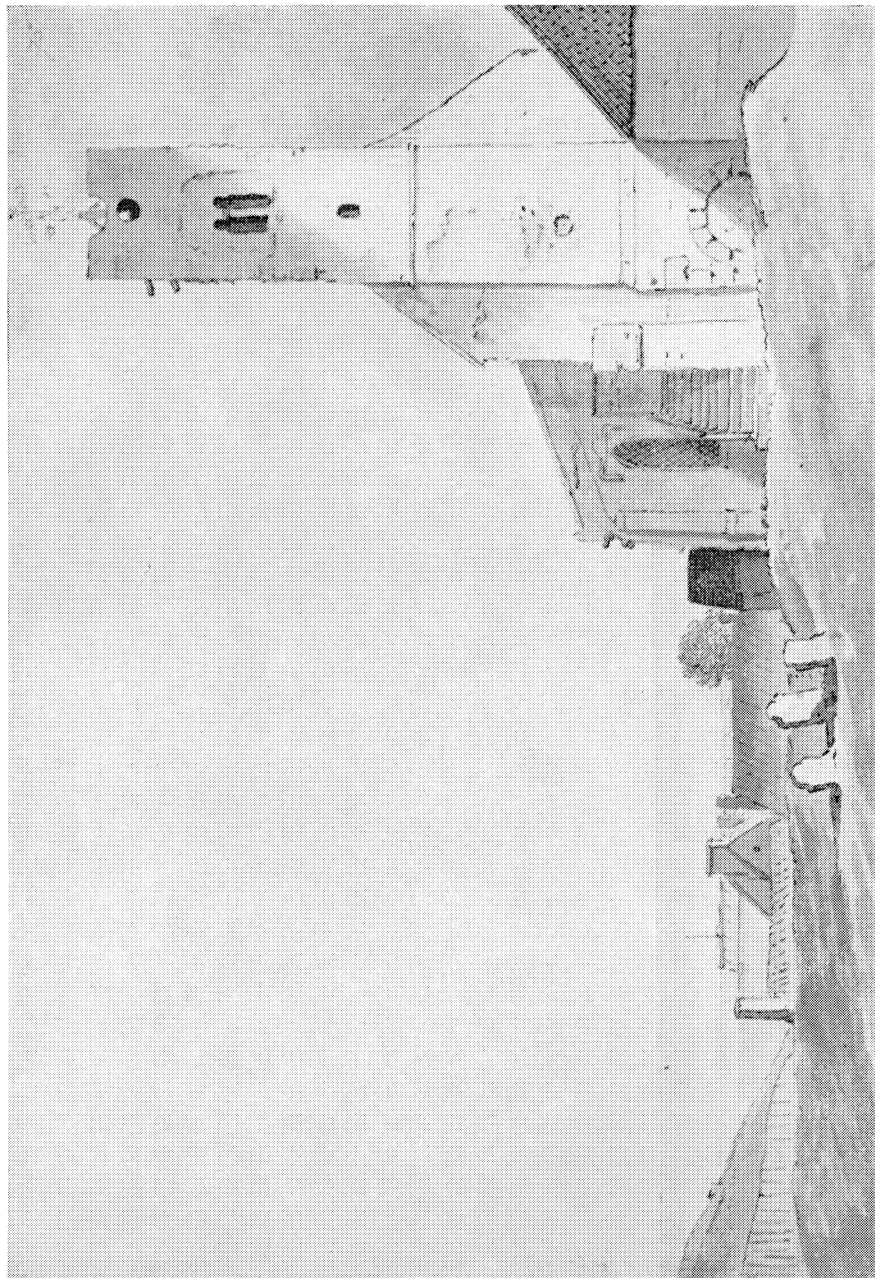


PLATE I



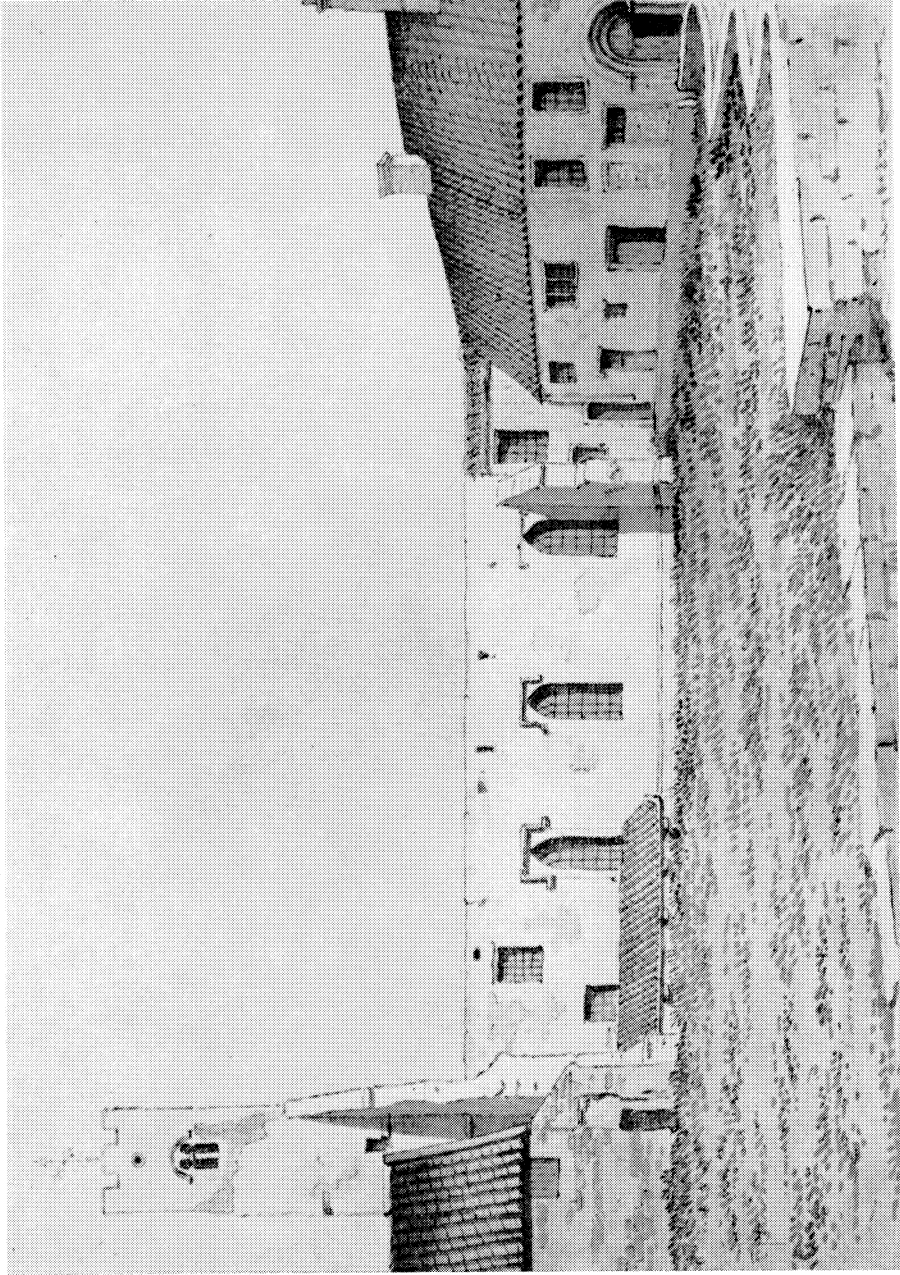
MONKWEARMOUTH, CO. DURHAM

Drawing by J. Grimm in 1794 of W. front of church before restoration (p. 24)

*Reproduced by courtesy of Trustees of British Museum*

MEDIEVAL ARCHAEOLOGY, VOL. XIII (1969)

CRAMP, MONKWEARMOUTH AND JARROW

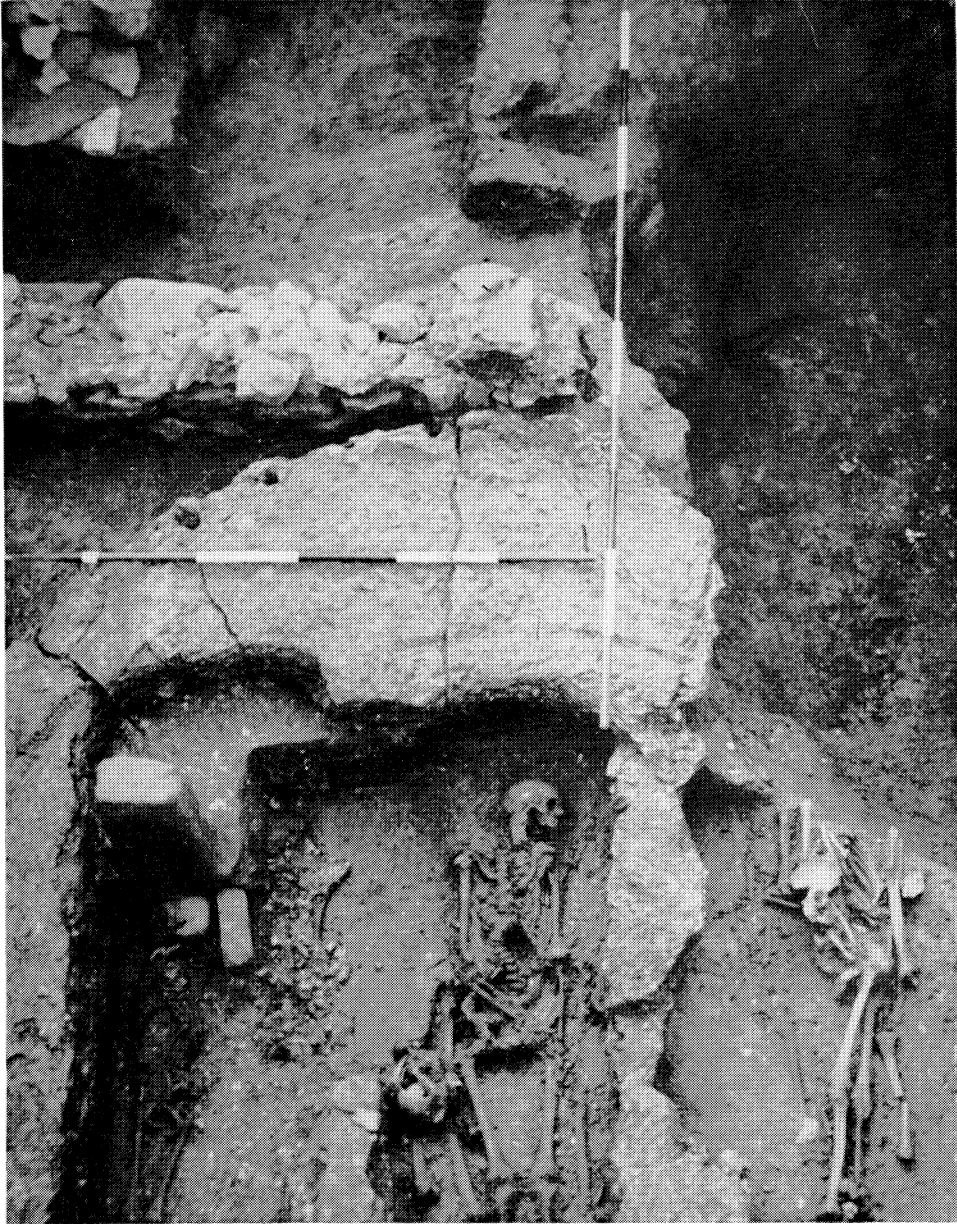


MONKWEARMOUTH, CO. DURHAM

Drawing by J. Grimm in 1704 of S. wall of church, and post-conquest buildings converted into Monkwearmouth Hall (pp. 24, 28)

*Reproduced by courtesy of Trustees of British Museum*

PLATE III

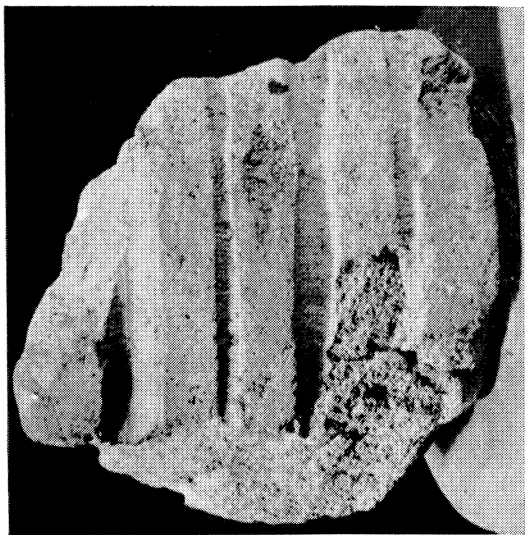


MONKWEARMOUTH, CO. DURHAM

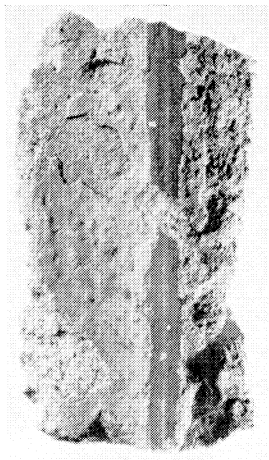
Junction of W. end of building A and E. wall of building B, showing late Saxon graves cutting floor of A, and pit I cutting both buildings (p. 35)

*Ph.: R. Cramp*

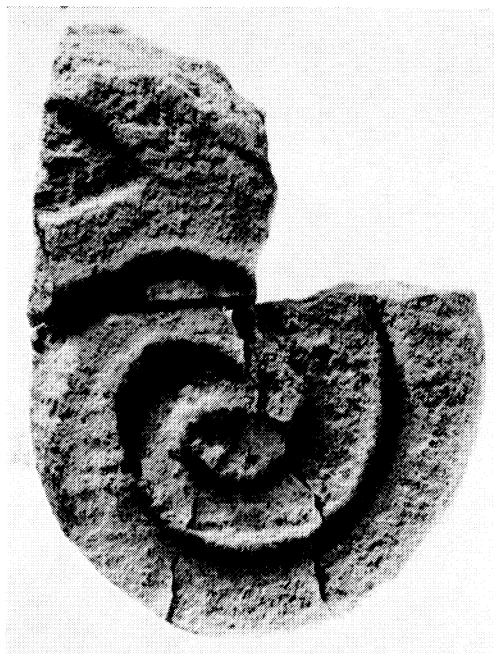
PLATE IV



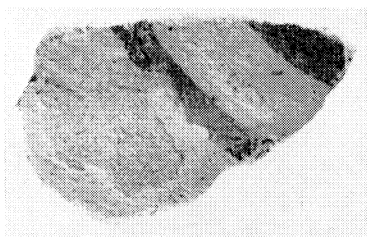
B



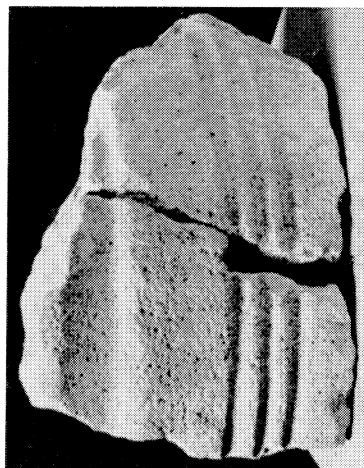
E



A



D



C

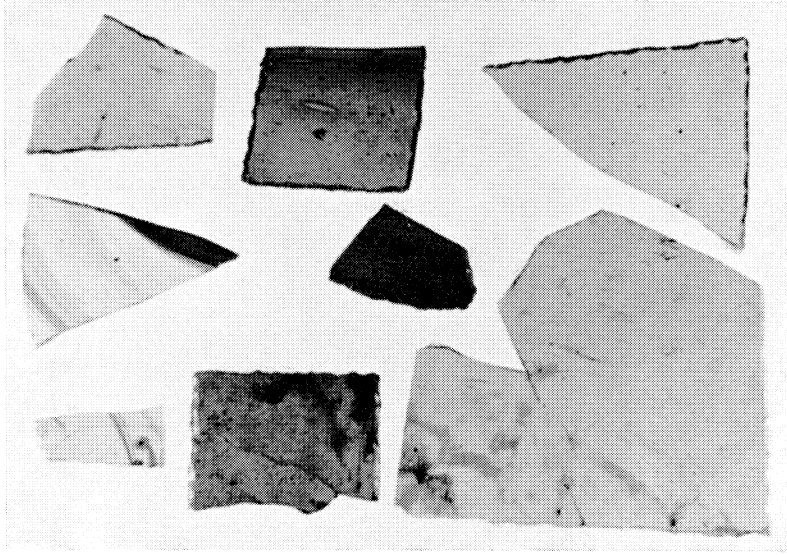
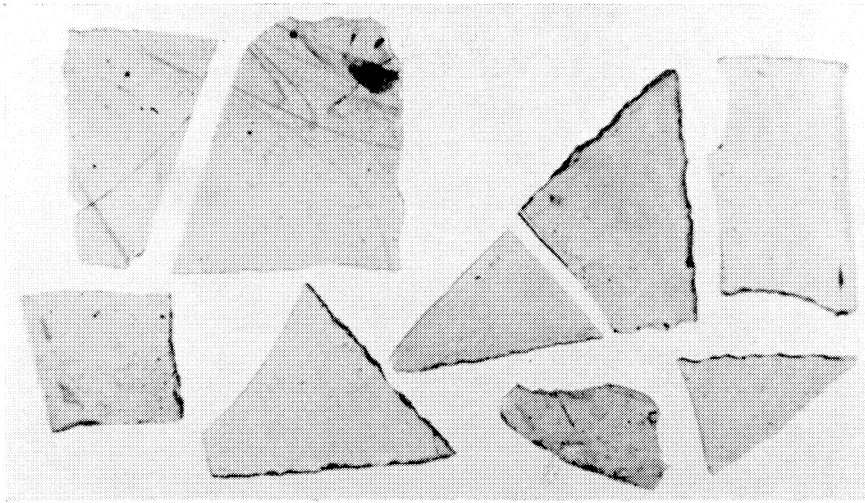
BUILDING MATERIALS, MONKWEARMOUTH, CO. DURHAM (pp. 34, 36, 39). Sc.  $\frac{2}{3}$

A. Capital. Sc.  $\frac{1}{2}$

B-C. Baluster shafts. Sc.  $\frac{2}{3}$

D-E. Wall-plaster painted with red stripes. Sc.  $\frac{2}{3}$   
*Ph.D.: Dept. of Archaeology, Durham University*

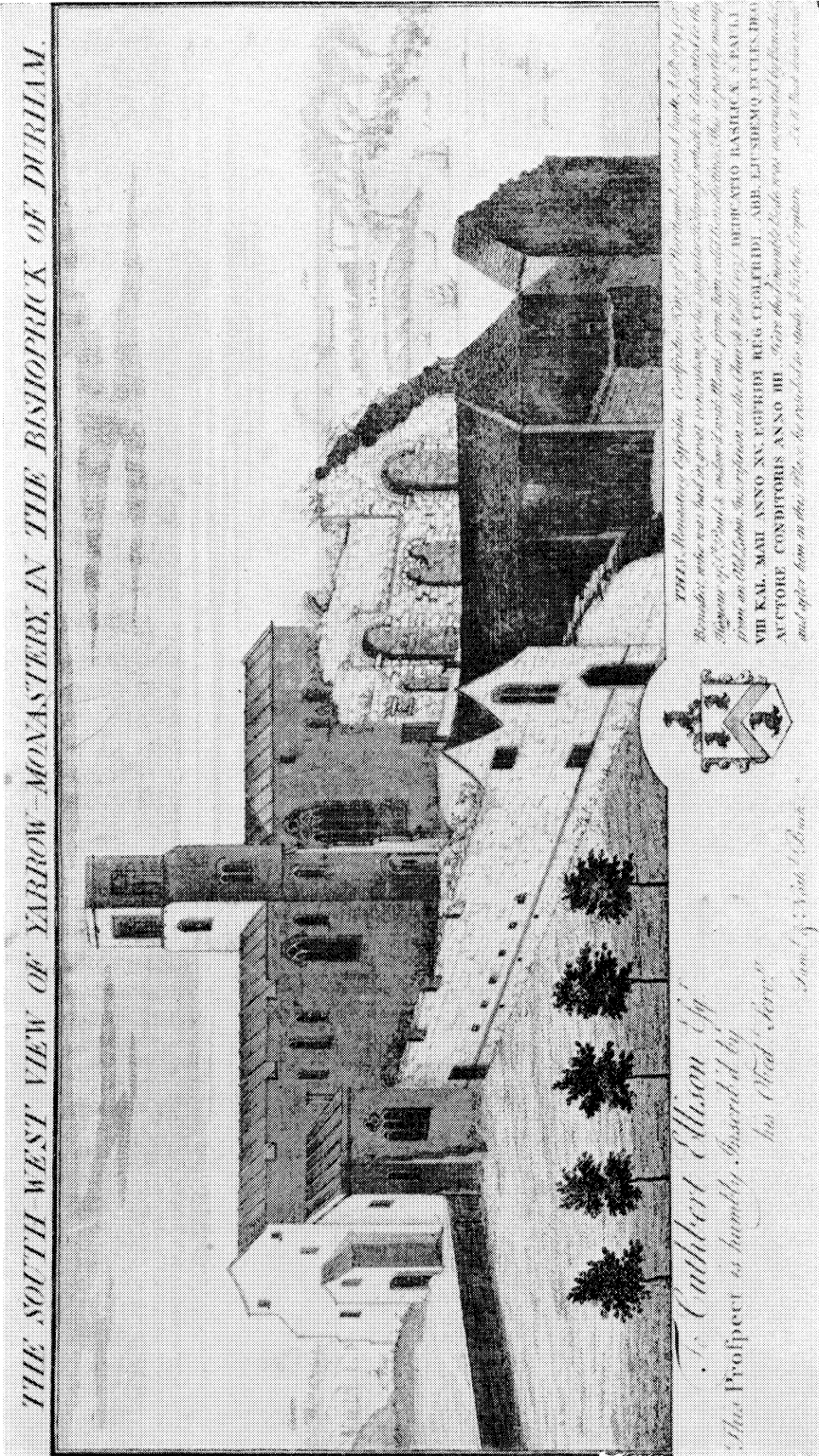
PLATE V



MONKWEARMOUTH AND JARROW, CO. DURHAM

Plain, coloured, and two-colour quarry fragments of window-glass (pp. 34, 37, 48). Sc.  $\frac{3}{4}$

*Plin.: Dept. of Archaeology, Durham University*



JARROW, CO. DURHAM

Drawing by S. and N. Buck in 1728 of church, and monastic buildings to the south (pp. 29, 43)

Reproduced by courtesy of Trustees of British Museum

PLATE VII



A

A. Building A, west of wall 2, showing buttress base by S. wall and central pillar base set in *opus signinum* floor (p. 45)  
B. W. end of building A with remains of eavesdrip drain (p. 47)



B

JARROW, CO. DURHAM

CRAMP, MONKWEARMOUTH AND JARROW  
Plat. : R. Cramp

MEDIEVAL ARCHAEOLOGY, VOL. XIII (1969)



A



B

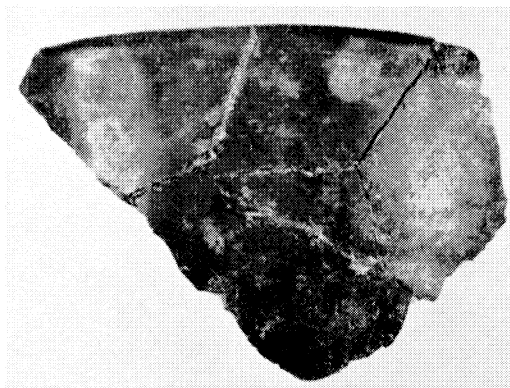
JARROW, CO. DURHAM (pp. 45, 50)

- A. Interior of standing building D, showing NE. quoin and part of E. and N. walls of building B cut by Norman cloister wall-trench. Part of early 18th-century brick floor in foreground.
- B. S. walls of buildings A and B in relation to Norman standing wall 3. Drain under path between buildings partly exposed.

*Phh. : R. Cramp*



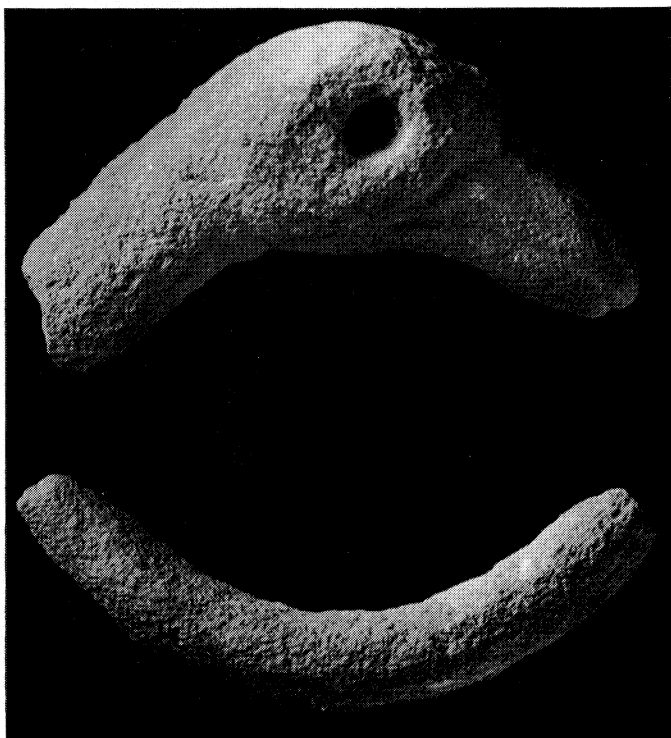
PLATE IX



A



B



C

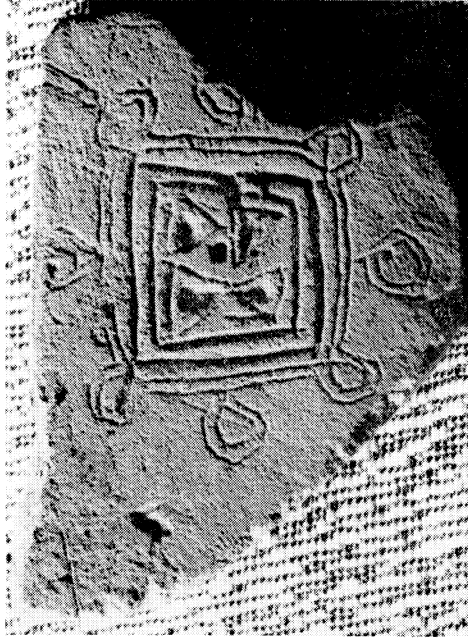
JARROW, CO. DURHAM

- A. Rim of glazed bowl from Saxon gravel floor (FIG. 25, *bis*; pp. 52, 64 f.). Sc.  $\frac{3}{4}$   
B. Stump of three-colour glass rod (p. 52). 1 cm. cross-section, 3 cm. long  
C. Bird's head and scroll fragment in fine sandstone, chipped from carving in high relief associated with E. end of building A (p. 49). Head, 5.5 cm. long, 2.2 cm. high

*Phh.* : Dept. of Archaeology Durham University



A



B



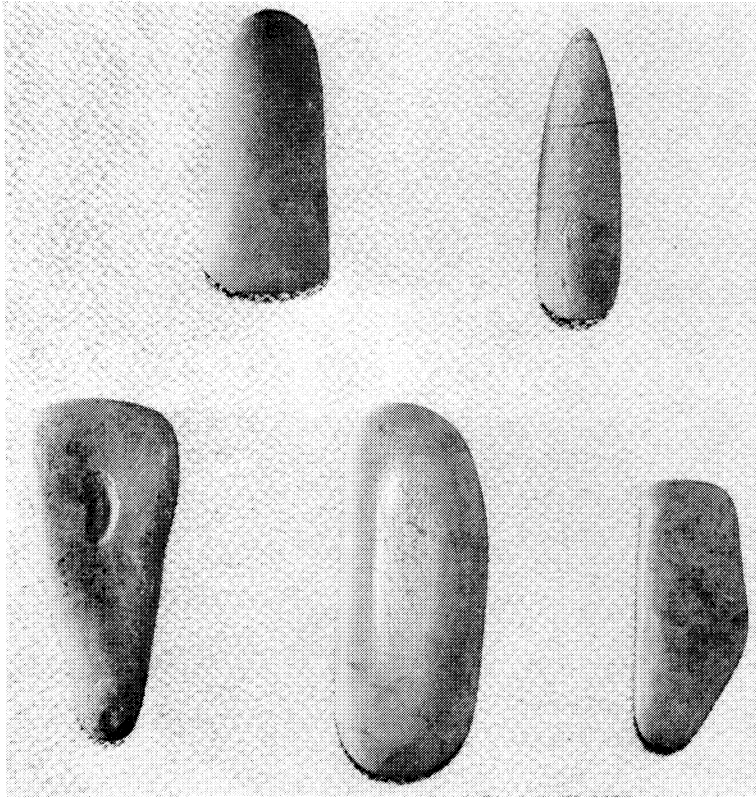
C

KIONDROGHAD, ISLE OF MAN

- A. Bronze disc, max. diam. 4.3 cm. (?) Part of latchet, shaft having been broken from left-hand edge (p. 74)
- B, C. Pattern-stone (slightly enlarged). B. Flat side with remains of mask in centre of top of square. C. Rounded side showing interlocking-I pattern (p. 75).

*Phh.: Keig*

PLATE XI



A

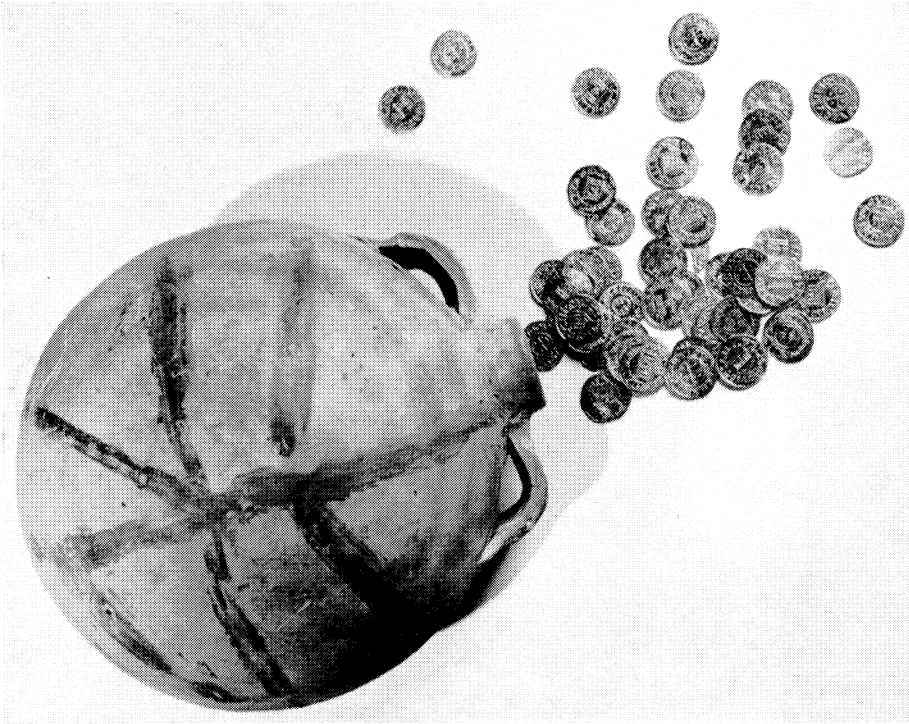


B

KIONDROGHAD, ISLE OF MAN

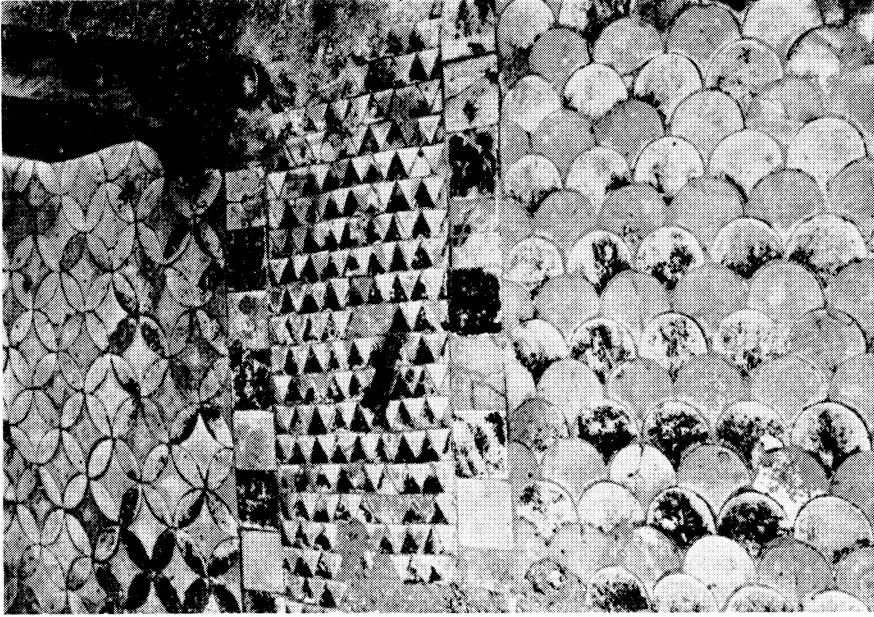
A. Above, stone axe-heads (p. 81); below, smoothing stones (p. 80). Sc.  $\frac{1}{4}$   
B. On l., grindstone (p. 80); on r., stone lamp or mortar (p. 81). Sc.  $\frac{1}{3}$

*Phh.: A, Manx Museum  
B, Keig*



A

A. ZELZATE, BELGIUM. Costrel dated by coin-hoard c. 870-80 (p. 107 f.). Sc.  $\frac{1}{3}$

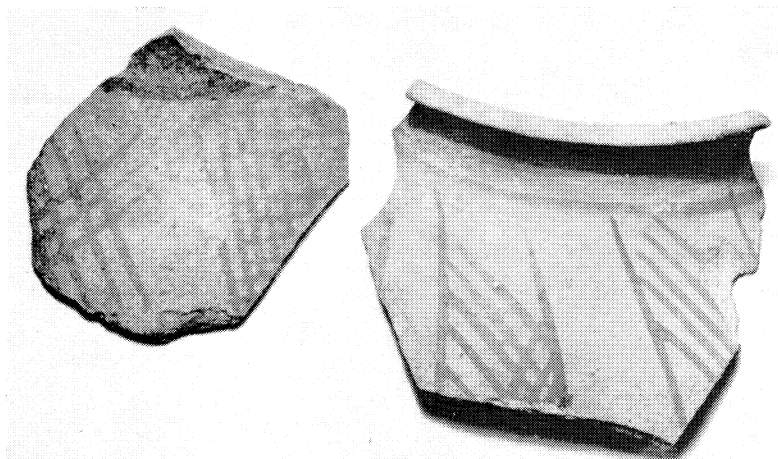


B

B. ABBEY OF ST. MARTIN, LIGUGÉ, FRANCE. Late 7th-century glazed floor-tiles in N. apse of Merovingian church (p. 120)

*Plat. : A, Bijloke, Museum - Ghent  
B, Amis du Vieux Liguge*

PLATE XIII



A



B

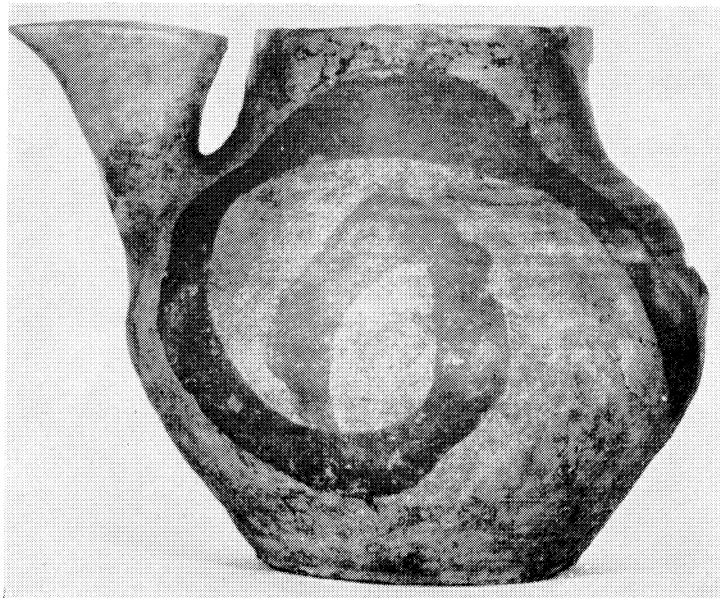
- A. 9th-century Germanic red-painted sherds from Castro de Aldueso, Santander, Spain (p. 135 f.). Sc.  $\frac{1}{2}$   
B. Broad-line painted jugs from Pozzuoli (Naples), in British Museum (p. 137 f.). Ht. 6 in.

*Phh.: A, Museum of Prehistory, Santander  
B, Trustees of British Museum. Crown copyright reserved*

PLATE XIV



A



B

GLAZED POTTERY FROM ROME

- A. Forum Ware with relief decoration (p. 142). Ht. 8 in.  
B. Pot with sparse glaze (p. 142). Ht. 6½ in.

*Phh.: O. Mazzucato*



ARTISTIC REPRESENTATIONS OF HAUBERKS

Miniature from MS. life of St. Edmund, c. 1125-50.  $10\frac{3}{4} \times 7\frac{1}{4}$  in.  
Pierpont Morgan Library, New York, MS. 736, f. 7 v (p. 156)

*After M. Rickert, *Painting in Britain: The Middle Ages*, pl. 66, by courtesy*



A



B

ARTISTIC  
REPRESENTATIONS OF  
HAUBERKS

A. Initial letter from Hugh de Puiset's bible, 12th century. 3 $\frac{3}{4}$  in. square. Durham Cathedral Library, MS., A. ii. 1, f. 131 v (p. 156)

B. Capital in choir of church of Notre-Dame-du-Port, Clermont Ferrand, c. 1140 (p. 156 f.)

A, Ph.: Durham Cathedral Library

B, After Joan Evans, *Art in Medieval France*, pl. 114, by courtesy





A



B

ARTISTIC REPRESENTATIONS OF HAUBERKS

- A. Ivory chessmen from Isle of Lewis, Outer Hebrides, c. 1200 British Museum (p. 157). Sc. slightly over  $\frac{1}{2}$   
B. Seal of King Stephen, 12th century. British Museum Harl. Ch. 43 C 13 (p. 157)

*A, Ph.: British Museum  
B, After J. Hewitt, Ancient Armour and Weapons in Europe, I, 122, by courtesy*



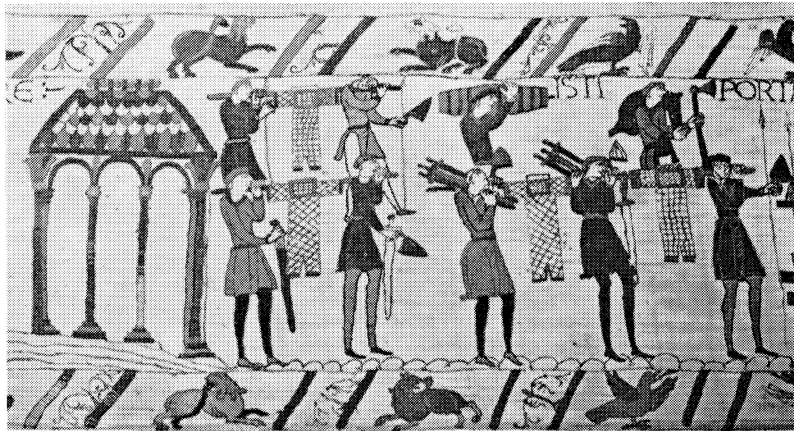
B



A



D

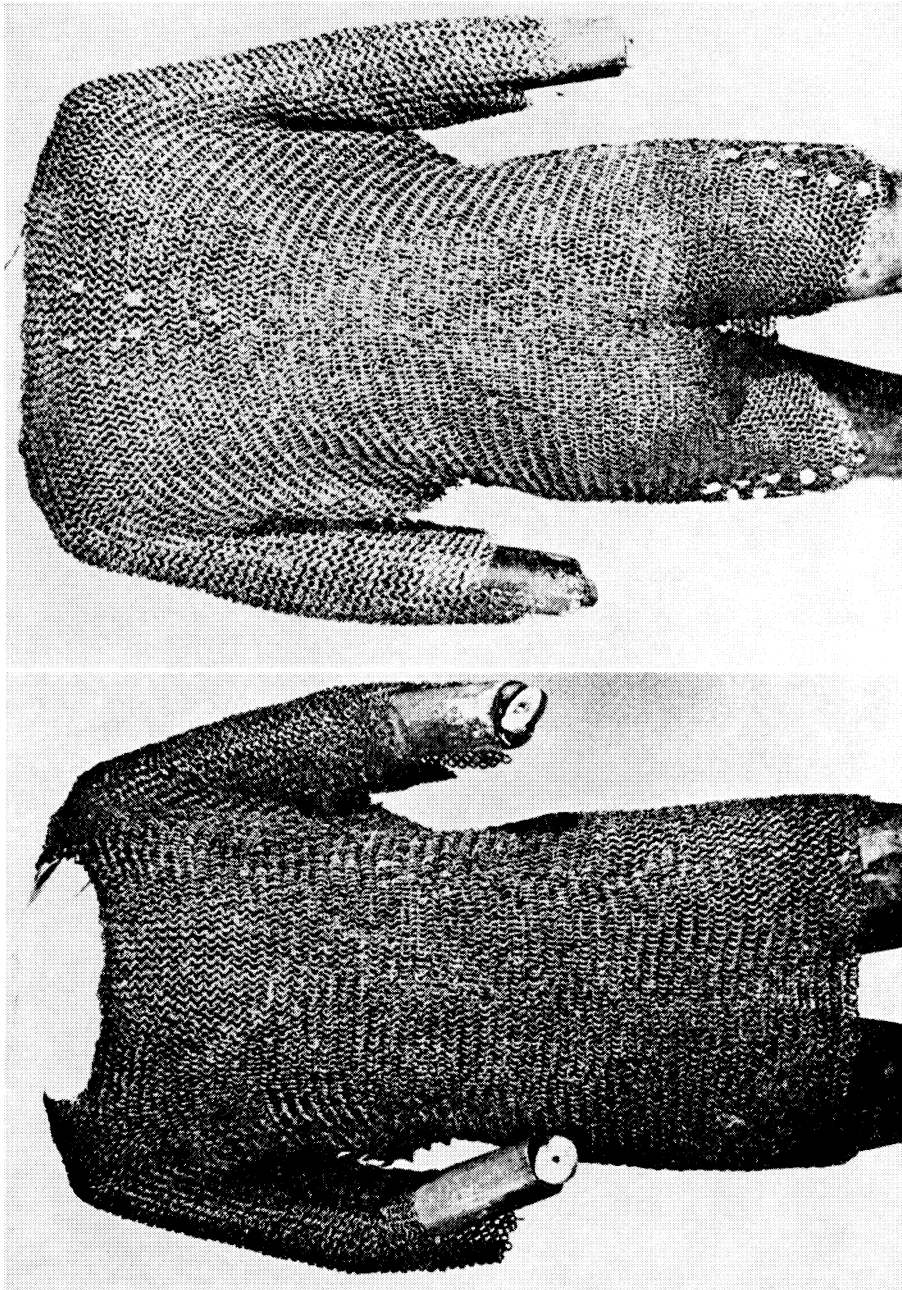


C

ARTISTIC REPRESENTATIONS OF HAUBERKS

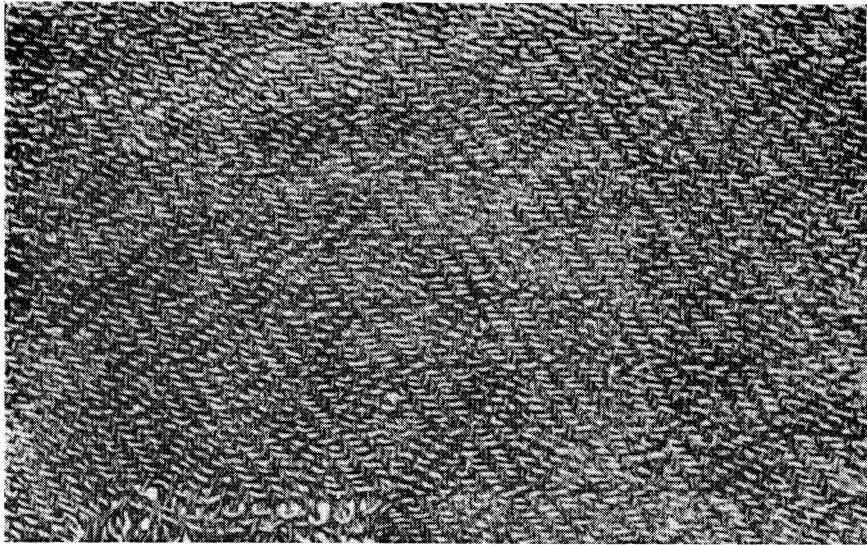
Sections from the Bayeux Tapestry, Bayeux, ? late 11th century (p. 157)

*Reproduced by kind permission of the Phaidon Press*

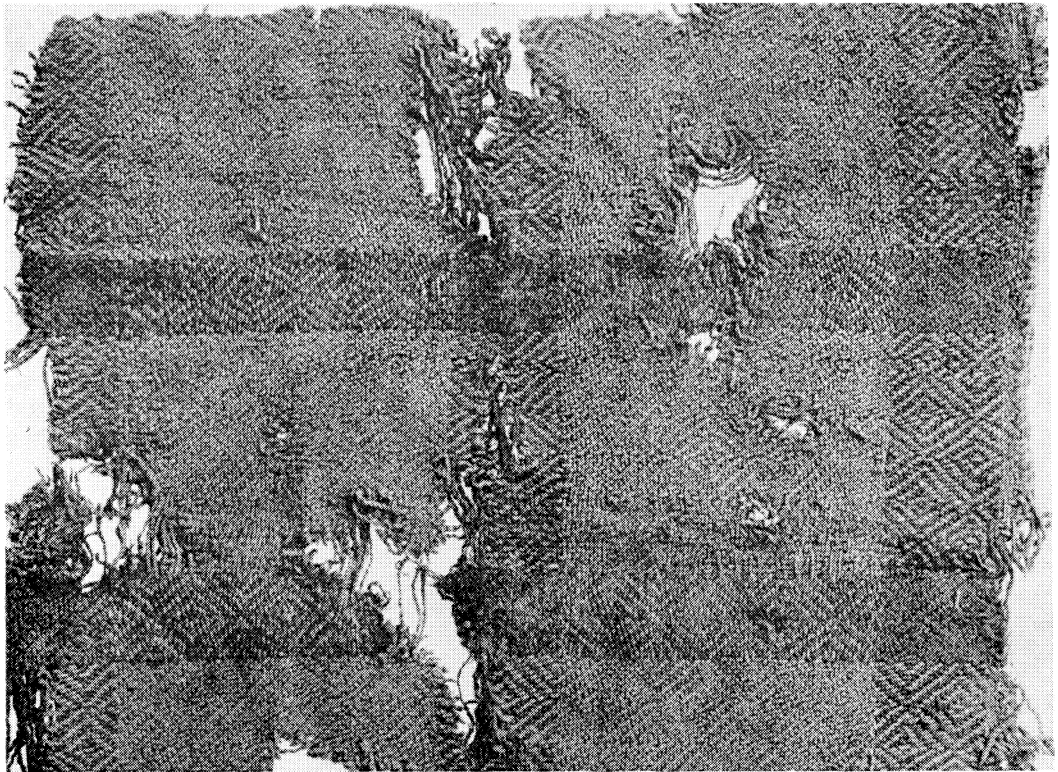


A, front, and B, back, of hauberk, c. 1390-1450, made by Bertolt vor Parte at Iserlohn, Westphalia.  
Tower of London Armouries, inv. no. III-1320 (p. 157)

*After Antiq. J., xi. (1960), pl. xvi, by courtesy*



A



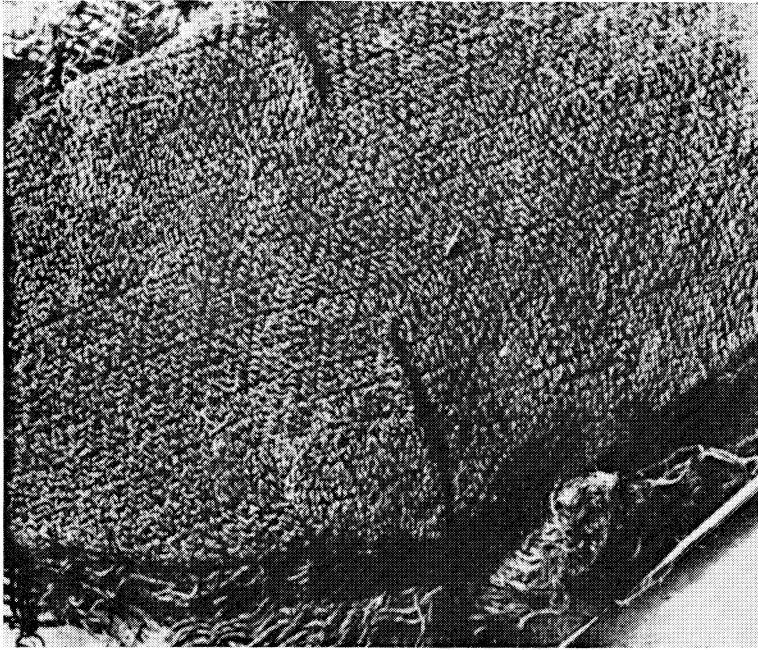
B

DIAMOND TWILLS FROM NORWAY (A) AND DENMARK (B).

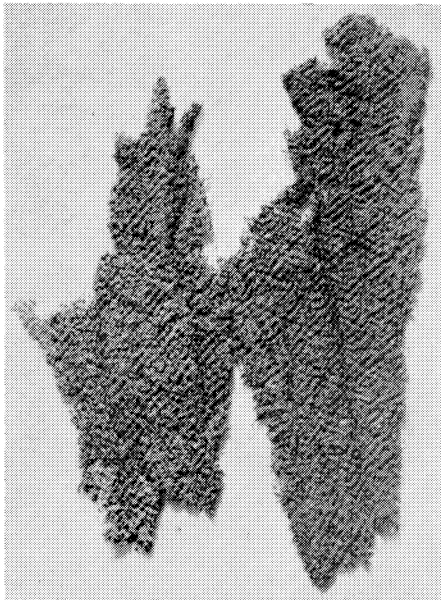
A. From Rønsberg, Mellom, c. 400. Universitetets Oldsaksamling, Oslo (p. 158 f.) Sc. c.  $\frac{1}{4}$

B. From Tvis Mose, W. Jutland, undated. Nationalmuseet, Copenhagen (p. 158 f.) Sc. c.  $\frac{1}{4}$

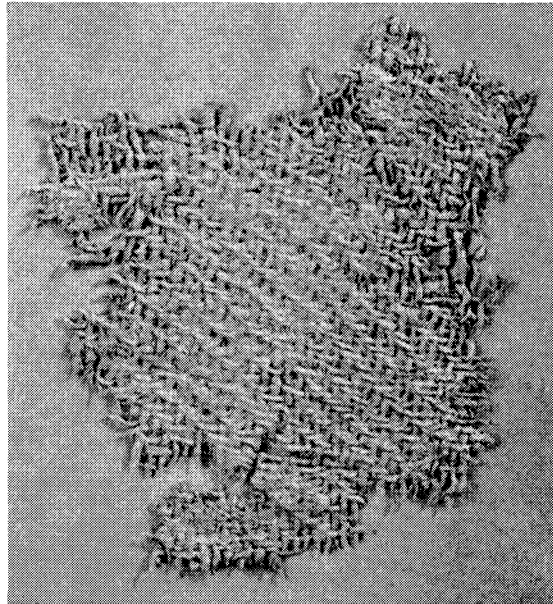
*Phh.: A, Universitetets Oldsaksamling, Oslo  
B, Nationalmuseet, Copenhagen*



A



B



C

TWILLS FROM ORKNEY (A) AND SUFFOLK (B, C)

A. Diamond twill, Greenigoe, Orphir, undated. National Museum of Antiquities of Scotland, Edinburgh (p. 159). Sc.  $\frac{1}{2}$

B. Diamond twill, Sutton Hoo, early 7th century. British Museum, Sutton Hoo, textiles 1 (p. 159). Sc.  $\frac{1}{2}$

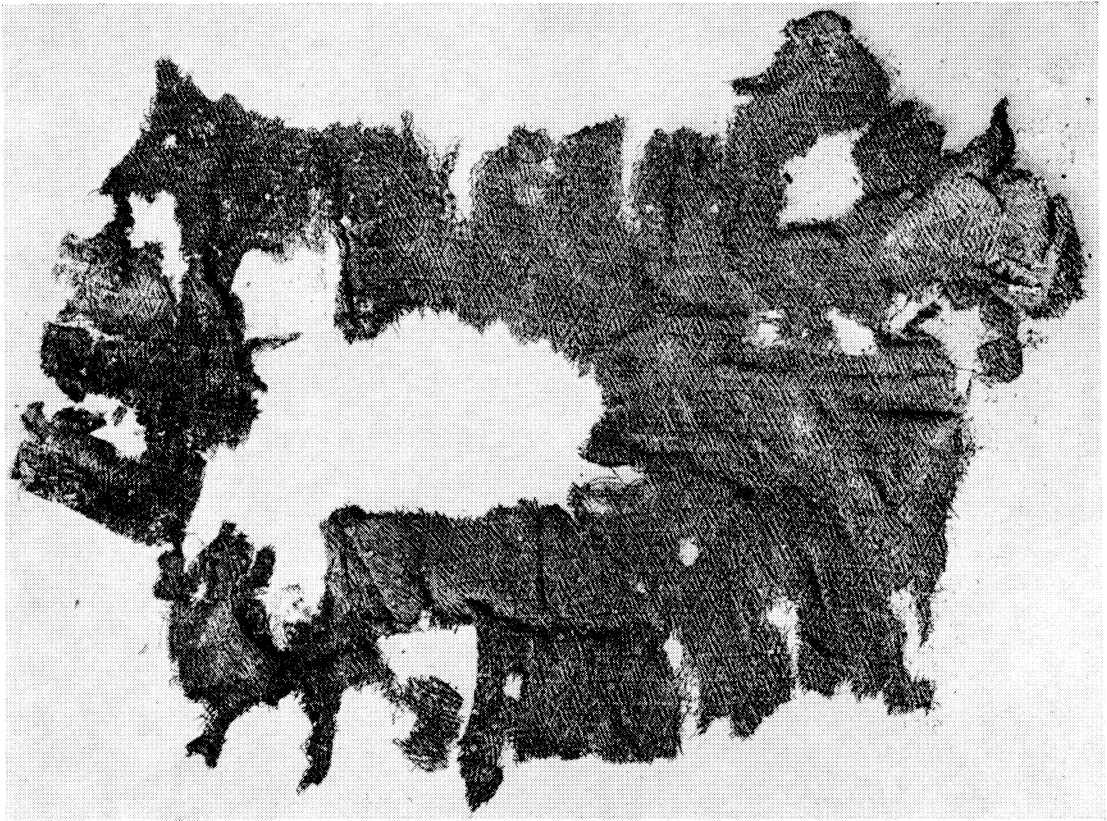
C. Plain, coarse twill, Sutton Hoo, early 7th century. British Museum, Sutton Hoo, textiles 4 (p. 159). Sc. *c.*  $\frac{1}{2}$

*Phh.: A, Nat. Mus. of Antiquities of Scotland  
B, C, British Museum*

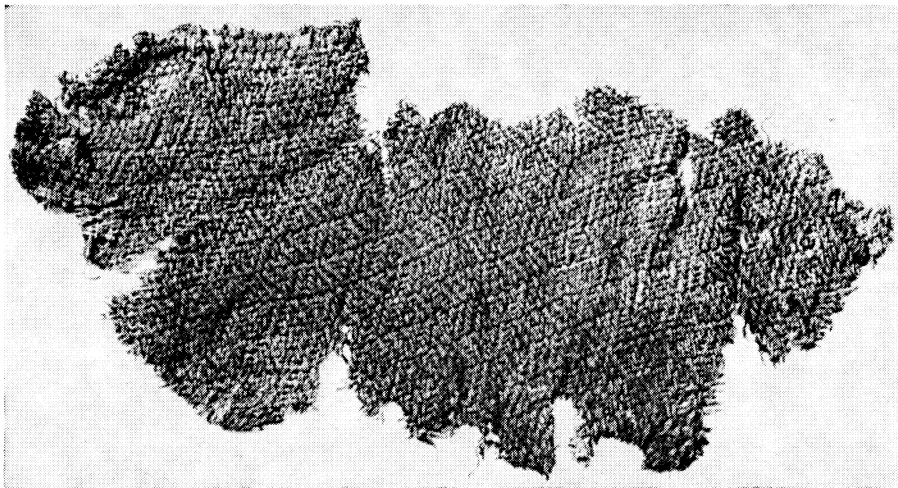


Diamond twill, Oseberg, Vestfold, Norway, mid 9th century. Universitetets Oldsaksamling, Oslo (p. 159 f.)  
Sc.  $\frac{1}{4}$

*Ph.: Universitetets Oldsaksamling, Oslo*



A



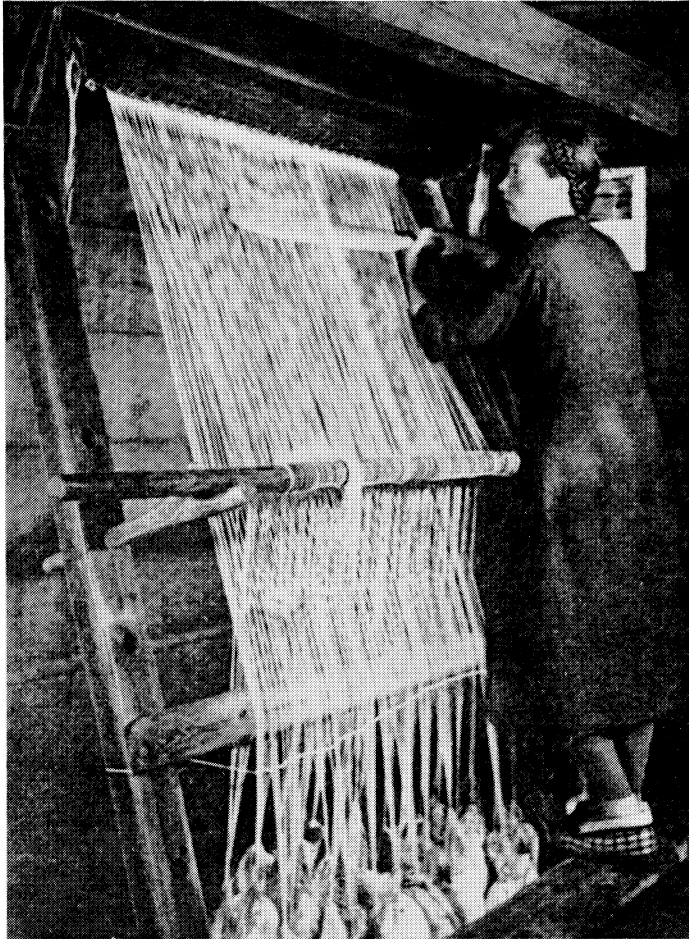
B

DIAMOND TWILLS FROM DENMARK (A) AND NORWAY (B). Sc.  $\frac{1}{4}$   
A. From Lousgaard, Bornholm, 7th or 8th century. Nationalmuseet, Copenhagen (p. 160)  
B. From Kaupang, Vestfold, 9th century. Universitetets Oldsaksamling, Oslo (p. 160)

*Ph. : A, Nationalmuseet, Copenhagen  
B, Universitetets Oldsaksamling, Oslo*



A



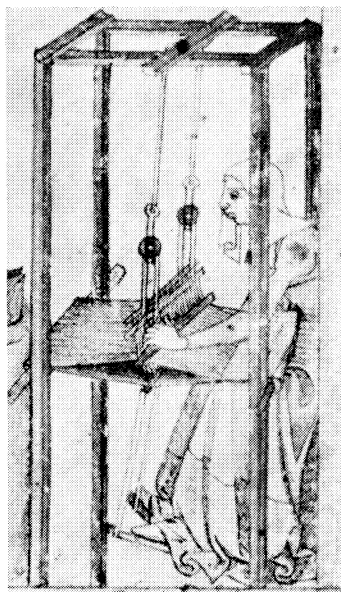
B

THE WARP-WEIGHTED LOOM

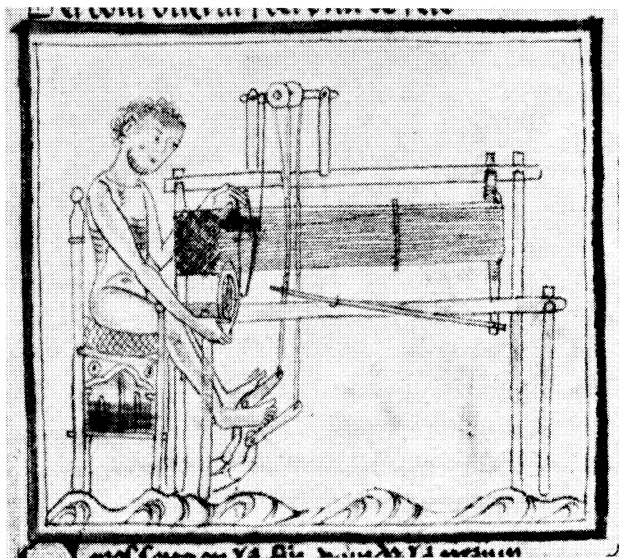
- A. Loom on Boeotian skyphos, 4th century B.C. Ashmolean Museum, Oxford (p. 162)  
B. Loom at Fitjar, Hord, Norway (p. 162)

*A, Ph.: Ashmolean Museum, Oxford  
B, After M. Hoffmann, The Warp-Weighted Loom, fig. 14, by courtesy*





A



B



C

REPRESENTATIONS OF EARLY TREADLE-LOOMS IN MANUSCRIPTS

- A. British Museum, Egerton MS. 1894, f. 2 v, c. 1300 (p. 163)  
 B. Trinity College, Cambridge, MS. O.9.34, f. 32 b, c. 1250, (p. 163 f.)  
 C. From weavers' ordinance book of Ypres, 1363, destroyed in first world war (p. 163)

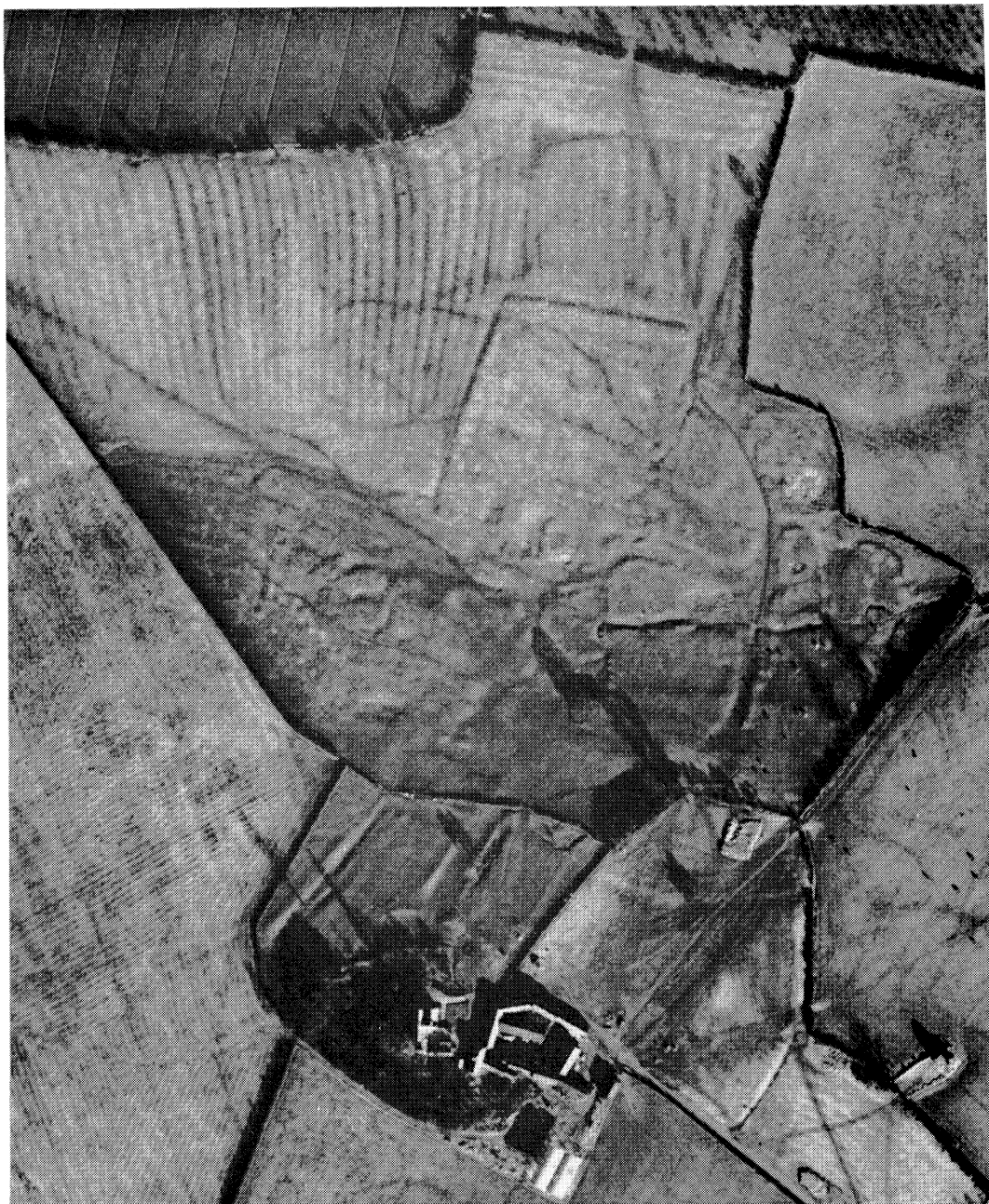
A, Ph.: British Museum  
 B, Ph.: Trinity College, Cambridge  
 C, After H. Obreen and H. Vander Linden, *Album historique de la Belgique*, fig. 73, by courtesy



WYTHEMAIL, NORTHAMPTONSHIRE (pp. 167, 169)

R.A.F. vertical air-photograph (January 1947) showing, on r., earthworks of deserted village of Wythemail and its associated ridge-and-furrow; on l., deserted village of Badsaddle; in between, remains of Wythemail wood (see interpretation, FIG. 50)

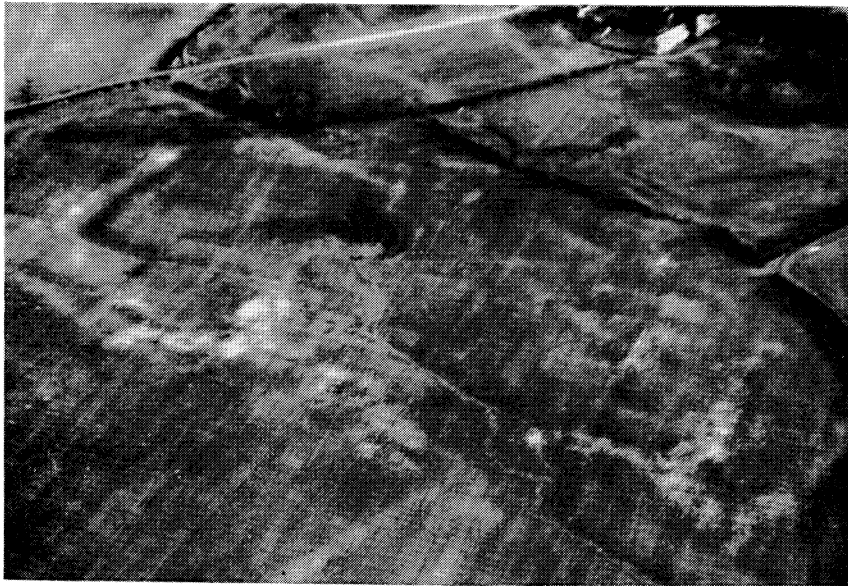
*Ph.: Ministry of Defence (Air Force Dept.), crown copyright reserved*



WYTHEMAIL, NORTHAMPTONSHIRE (pp. 167, 169, 172)

Enlargement of part of PL. XXVI showing earthworks of deserted village (cf. plan, FIG. 51). In centre, just above shadows of trees round pond, robber-trench for period-III long-house

*Ph.: Ministry of Defence (Air Force Dept.), crown copyright reserved*



A



B

WYTHEMAIL, NORTHAMPTONSHIRE (p. 169)

Oblique air-photographs (April 1956) after three ploughings

A. View looking SE.: in background, farm and moated site; in foreground, village site with white stony spreads

B. Closer view of excavated area looking S. Stony spread in centre below tree-lined pond shows excavated L-shaped area

*Phh.: J. K. St. Joseph, Cambridge University collection: copyright reserved*



A



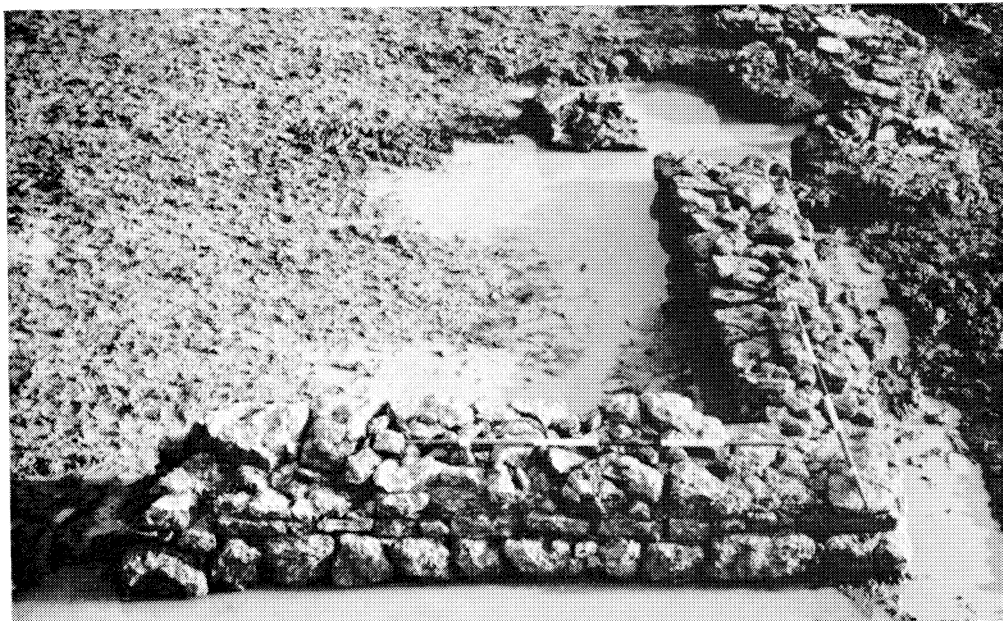
B

WYTHEMAIL, NORTHAMPTONSHIRE

- A. N. part of excavated area looking NE. showing W. wall of period-III long-house (left foreground, under pole), and robber-trench clearly visible in general rubble (p. 176)
- B. SE. part of excavated area looking NE. showing period-III cobbled yard and outline of building 6 with pitched stone entrance between poles (p. 177 f.)

*Ph. : J. M. Lewis, crown copyright reserved*

PLATE XXX



A



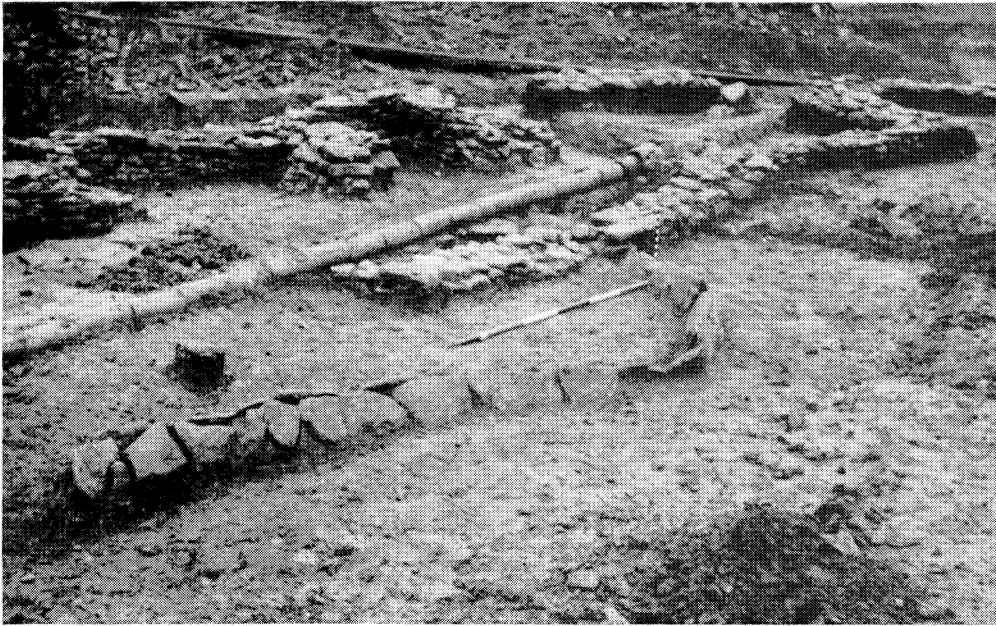
B

WYTHEMAIL, NORTHAMPTONSHIRE (p. 176)

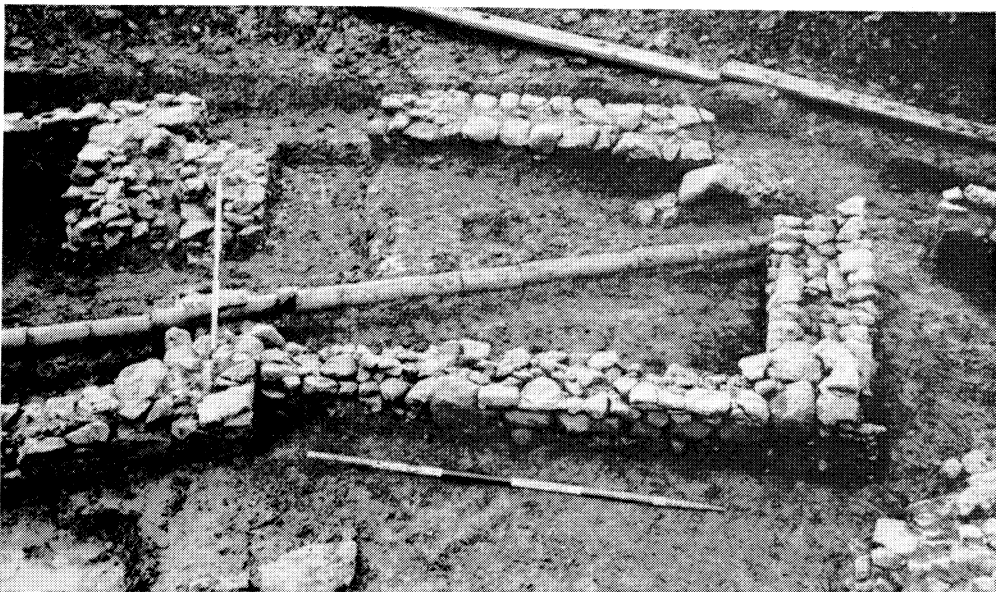
SW. corner of period-III long-house (A, from W., B, from NE.) showing surviving walls built of limestone blocks typical of period III

*Phh.: J. M. Lewis, crown copyright reserved*

PLATE XXXI



A



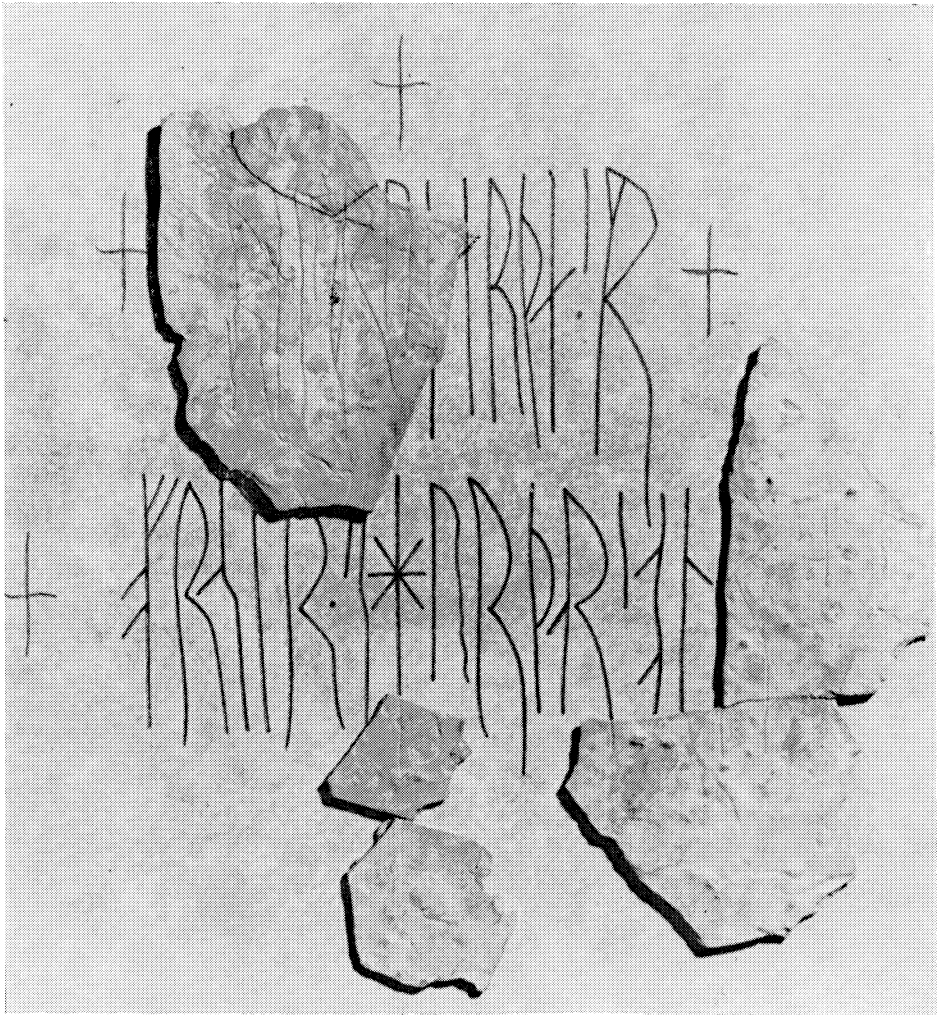
B

WYTHEMAIL, NORTHAMPTONSHIRE (pp. 174, 176, 178)

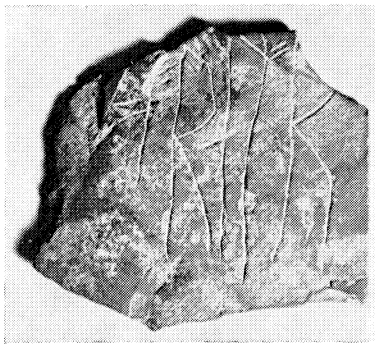
Outbuildings at S. end of excavated area

- A. View from NE. with  $\Delta$  drain in foreground and buildings 2 and 3 beyond, cut by modern land drain. In building 2, on l., limestone-slab construction typical of period II; in building 3, on r., limestone-block construction of period III
- B. Closer view of building 3 from N. showing, on l., junction with building 2 and added wall in SW. corner

*Phh.: J. M. Lewis, crown copyright reserved*



B



A

A. SETTLE, YORKSHIRE. Inscribed stone from Victoria Cave (pp. 212 ff.). Sc.  $\frac{1}{2}$

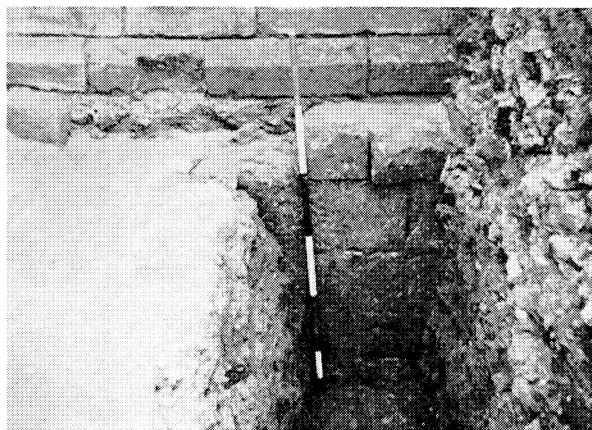
B. MAESHOWE, ORKNEY. Fragments of inscription XI (pp. 212 ff.). Sc.  $\frac{4}{9}$

*Phh.: A, M. J. Swanton  
B, National Museum of Antiquities of Scotland*

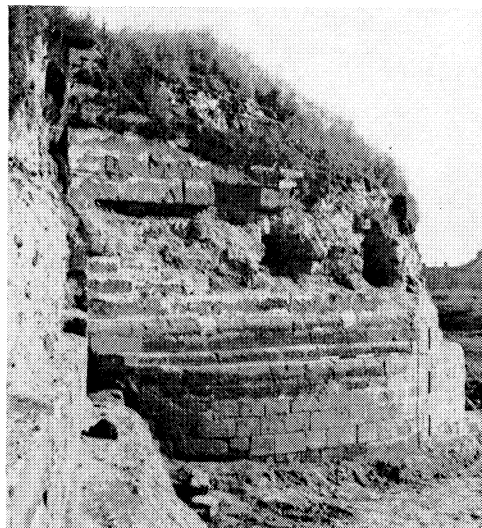




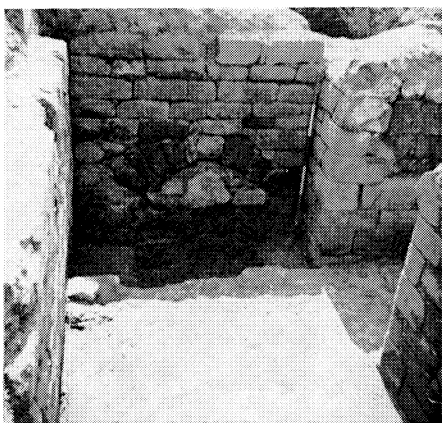
A



B



C



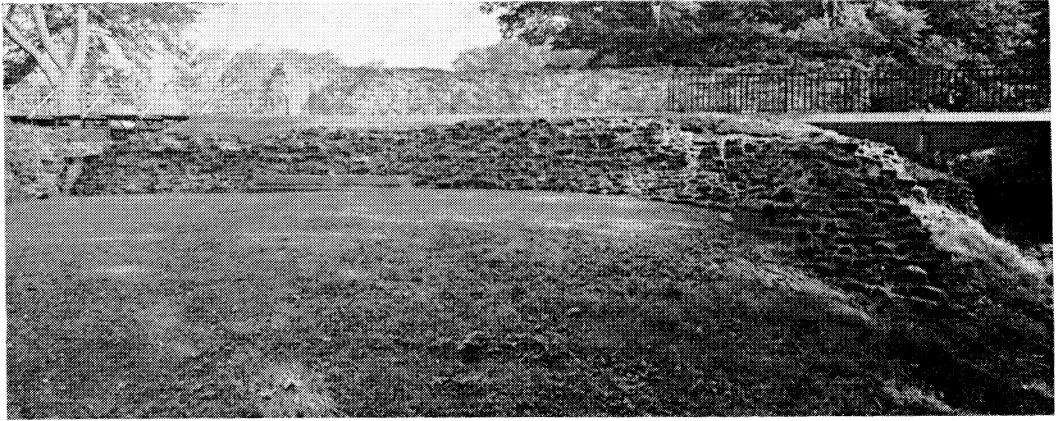
D

A, B. CONISBROUGH CASTLE, YORKSHIRE (p. 215 f.). A, four-bay, single-aisled hall from top of keep; B, base of keep buried under mound

C, D. BOLINGBROKE CASTLE, LINCOLNSHIRE (p. 216 f.). C, circular base of SW. tower later re-formed as octagon; D, room beneath gate-passage with relieving arch in rear wall

*Phh.: A. E. Thompson*

PLATE XXXIV



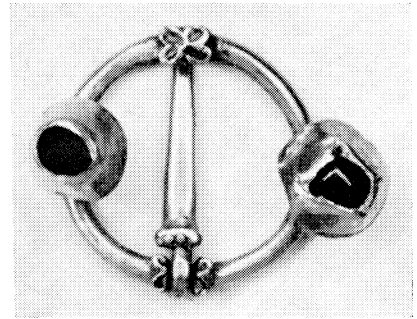
A



B



C



D

A-C. KENILWORTH CASTLE, WARWICKSHIRE (p. 218 f.). A, W. face of Gallery tower showing bay, tower and new bridge; B, rear door of turret with blocked postern beyond, on N. curtain; C, new bridge and remains of water controls at S. end of causeway

D. WATERLOOVILLE, HAMPSHIRE. Late 13th-century gold ring-brooch (py. 224 ff.). Sc. c.  $\frac{2}{3}$

*Ph.*: A-C, A. E. Thompson  
D, British Museum

PLATE XXXV



A

WESTON, YORKSHIRE (p. 241)  
Fragment of Anglo-Danish cross

MEDIEVAL ARCHAEOLOGY, VOL. XIII (1969)

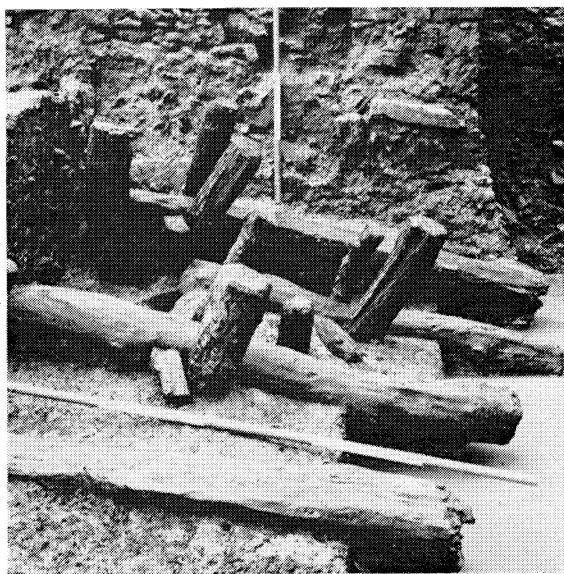


B

*Phot: Jean Le Patourel*

WILSON AND HURST, MEDIEVAL BRITAIN

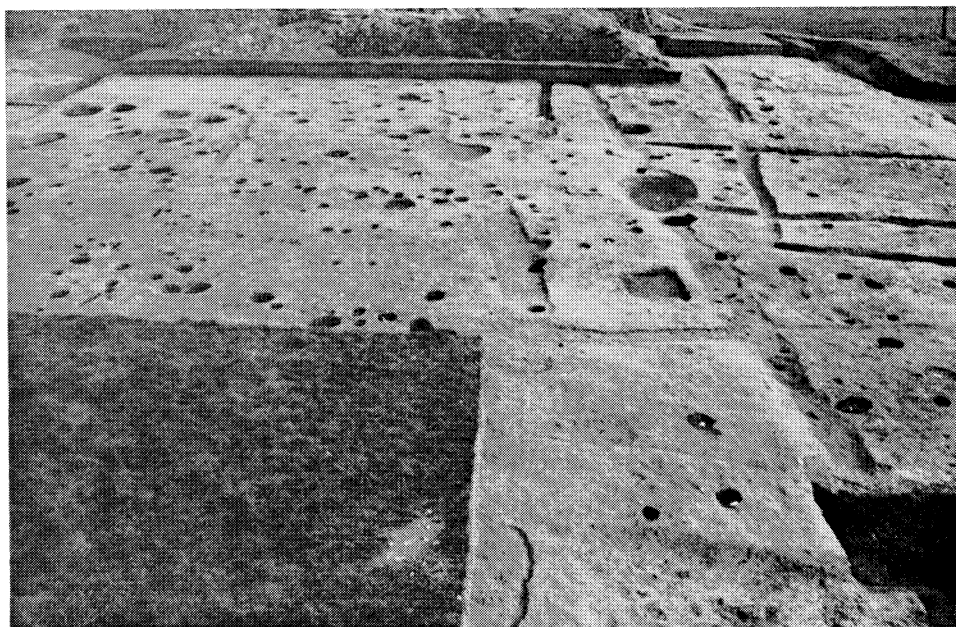
PLATE XXXVI



A



B



C

A, B. BAKER LANE, KING'S LYNN, NORFOLK. A, side view of part of timber reinforcement of 13th- to 14th-century river-bank. B, detail of timber indicated by arrows on A. Horizontal oak members pierced by sweet chestnut spar. Retaining piles probably alder (p. 266).

C. BARTON BLOUNT, DERBYSHIRE. General view from NW. showing complex of post-holes, slots and ditches. Main house site under dump in background had not yet been excavated (p. 276).

*Phh.: A, B, A. Carter  
C, G. Beresford*

# THE SOCIETY FOR MEDIEVAL ARCHAEOLOGY

## MONOGRAPH SERIES

A series of monographs dealing with particular aspects of the archaeology of the British Isles between A.D. 400 and A.D. 1600.

1. G. Bersu and D. M. Wilson, *Three Viking Graves in the Isle of Man* (1966), price 40s.
2. F. W. B. Charles, *Medieval Cruck-Building and its Derivatives* (1967), price 40s.
3. P. A. Rahtz, *Excavations at King John's Hunting Lodge, Writtle, Essex, 1955-57* (1969), price 50s.
4. Audrey L. Meaney and Sonia Chadwick Hawkes, *Two Anglo-Saxon Cemeteries at Winnall, Winchester, Hampshire* (1970), price 35s.

**Obtainable from Mrs. A. F. Morley, 6 Church Grove, Little Chalfont, Amersham, Bucks.**

Other possible future titles are: J. G. Hurst, *Excavations at Wharram Percy, E.R. Yorks., 1950-1960*; H. E. Jean Le Patourel, *Some Medieval Moated Sites in Yorkshire*; Christine M. Mahany, *Excavations at Stamford*; J. N. L. Myres, *The Anglo-Saxon Cemetery at Illington, Norfolk*.

# MEDIEVAL ARCHAEOLOGY

VOLUME XIII, 1969

	Page
S. E. WEST	
The Anglo-Saxon village of West Stow: an interim report of the excavations, 1965-8	1
ROSEMARY CRAMP	
Excavations at the Saxon monastic sites of Wearmouth and Jarrow, co. Durham: an interim report	21
P. S. GELLING	
A metalworking site at Kiondroghad, Kirk Andreas, Isle of Man	67
DAVID HILL	
The Burghal Hidage: the establishment of a text	84
J. G. HURST (ed.)	
Red-painted and glazed pottery in western Europe from the eighth to the twelfth century	93
ELEANORA CARUS-WILSON	
Haberget: a medieval textile conundrum	148
D. GILLIAN HURST AND JOHN G. HURST	
Excavations at the medieval village of Wythemail, Northamptonshire	167
NOTES AND NEWS:	
Britannia et Anglia (M. W. Thompson); A late 6th-century cruciform brooch from Toddington, Bedfordshire: an Anglo-Saxon connexion examined (D. H. Kennett); Early Anglo-Saxon gold braids: addenda and corrigenda (Elisabeth Crowfoot); A rune-stone from Victoria Cave, Settle, Yorkshire (M. J. Swanton); Further work at Conisbrough Castle, Yorkshire (M. W. Thompson); Further work at Bolingbroke Castle, Lincolnshire (M. W. Thompson); Kenilworth Castle since 1962 (M. W. Thompson); Medieval timberwork at Bisham Abbey (J. M. Fletcher and C. A. Hewett); A ring brooch from Waterlooville, Hants (J. Cherry); Medieval church cruetts in pottery (G. C. Dunning); The Orkney and Shetland Conference, 1969 (David M. Wilson); The Vernacular Architecture Group Conference, 1969 (E. A. Gee)	204
MEDIEVAL BRITAIN IN 1968:	
I. Pre-conquest: compiled by David M. Wilson	230
II. Post-conquest: compiled by D. Gillian Hurst	243
REVIEWS:	
M. D. Lobel (ed.), <i>Historic Towns: Maps and Plans of Towns and Cities in the British Isles, with Historical Commentaries, from earliest times to 1800</i> , vol. 1 (M. W. Thompson); W. Urry, <i>Canterbury under the Angevin Kings</i> (W. A. Pantin); G. Jones, <i>A History of the Vikings</i> (P. S. Gelling); R. Allen Brown, <i>The Normans and the Norman Conquest</i> (S. E. Rigold); P. M. C. Kermodé and J. R. Bruce, <i>Manx Archaeological Survey, 1st-6th Reports</i> (D. M. Wilson); H. C. Darby and R. Welldon Finn (eds.), <i>The Domesday Geography of South-West England</i> (A. D. Saunders); <i>Rheinische Ausgrabungen</i> , 1; <i>Beiträge zur Archäologie des Mittelalters</i> (M. W. Thompson); M. Fixot, <i>Les Fortifications de terre et les origines féodales dans le Cinglais</i> (D. F. Renn); C. Platt, <i>Medieval Archaeology in England: A Guide to the Historical Sources</i> (M. W. Thompson); M. Dolley and W. Seaby, <i>Sylloge of Coins of the British Isles: Ulster Museum, Belfast</i> , 1, <i>Anglo-Irish Coins: John-Edward III</i> (S. E. Rigold); G. L. Remnant, <i>A Catalogue of Misericords in Great Britain</i> (H. G. Slade); Royal Commission on Historical Monuments, <i>An Inventory of Historical Monuments in the County of Cambridge</i> , 1, <i>West Cambridgeshire</i> (M. W. Thompson); L. R. Laing, <i>Coins and Archaeology</i> (S. E. Rigold); A. Steensberg (ed.), <i>Atlas over Borups Ager 1000-1200 e. Kr.</i> (P. J. Fowler)	288
ACCOUNTS OF THE SOCIETY, 1968-9	308
LIST OF OFFICERS AND COMMITTEES OF THE SOCIETY, 1969-70	310