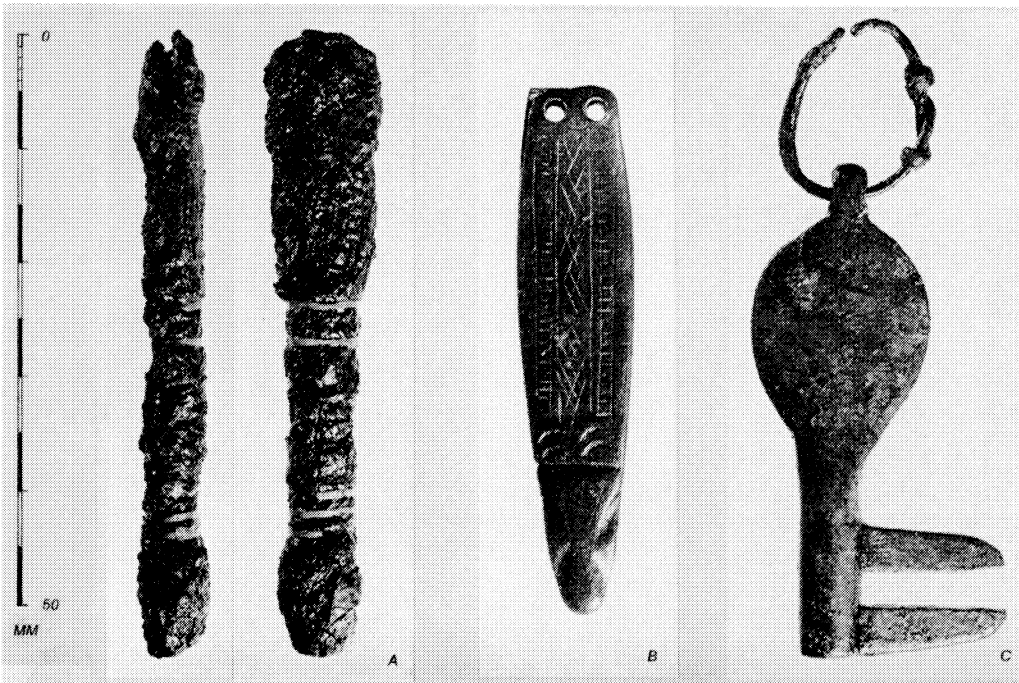


PLATE I

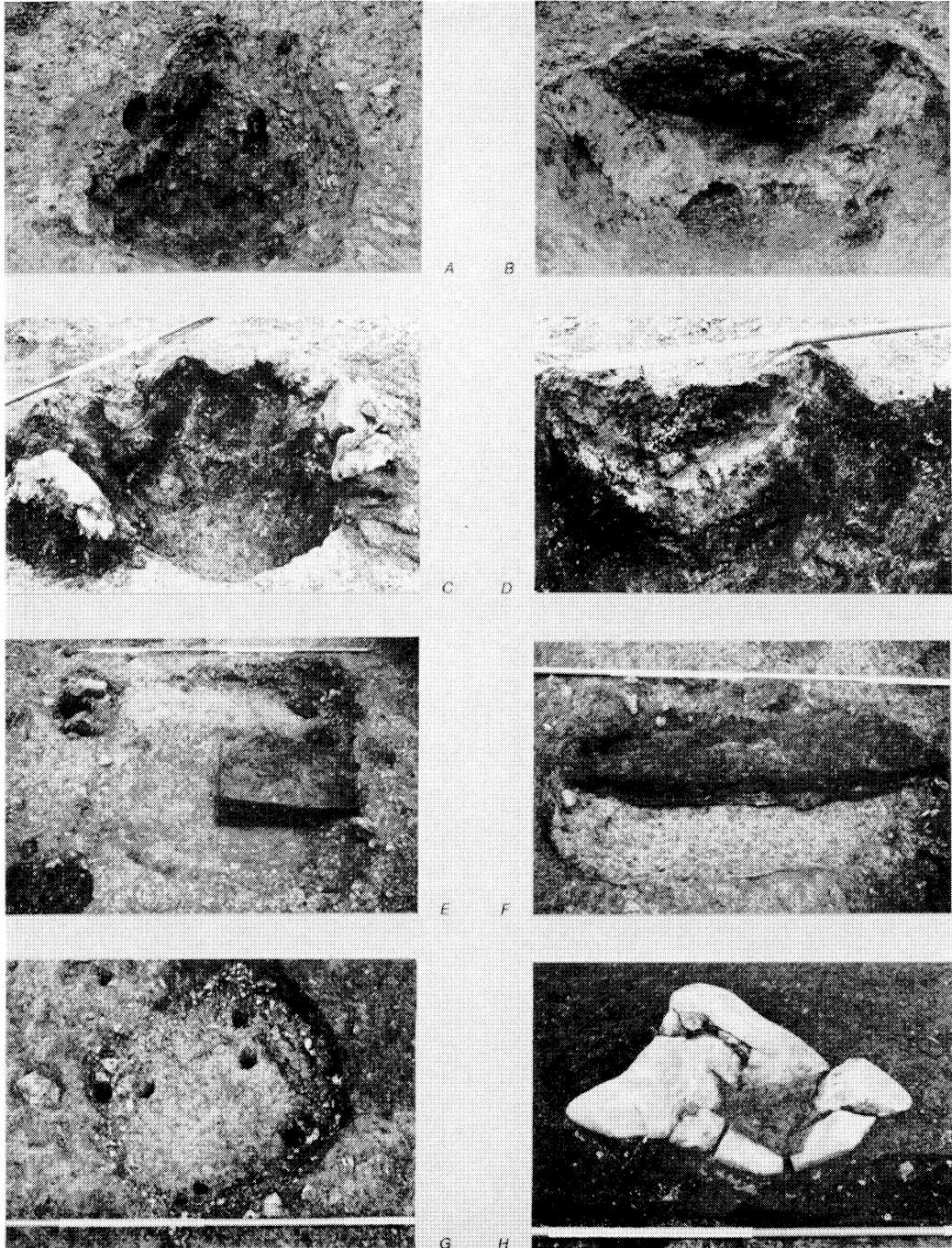


A. RAMSBURY: Excavated site from NW.



B. *a.* Iron strapend with silver bands (no. 6);  
*b.* Bronze strapend (no. 2); *c.* Bronze key (no. 1)

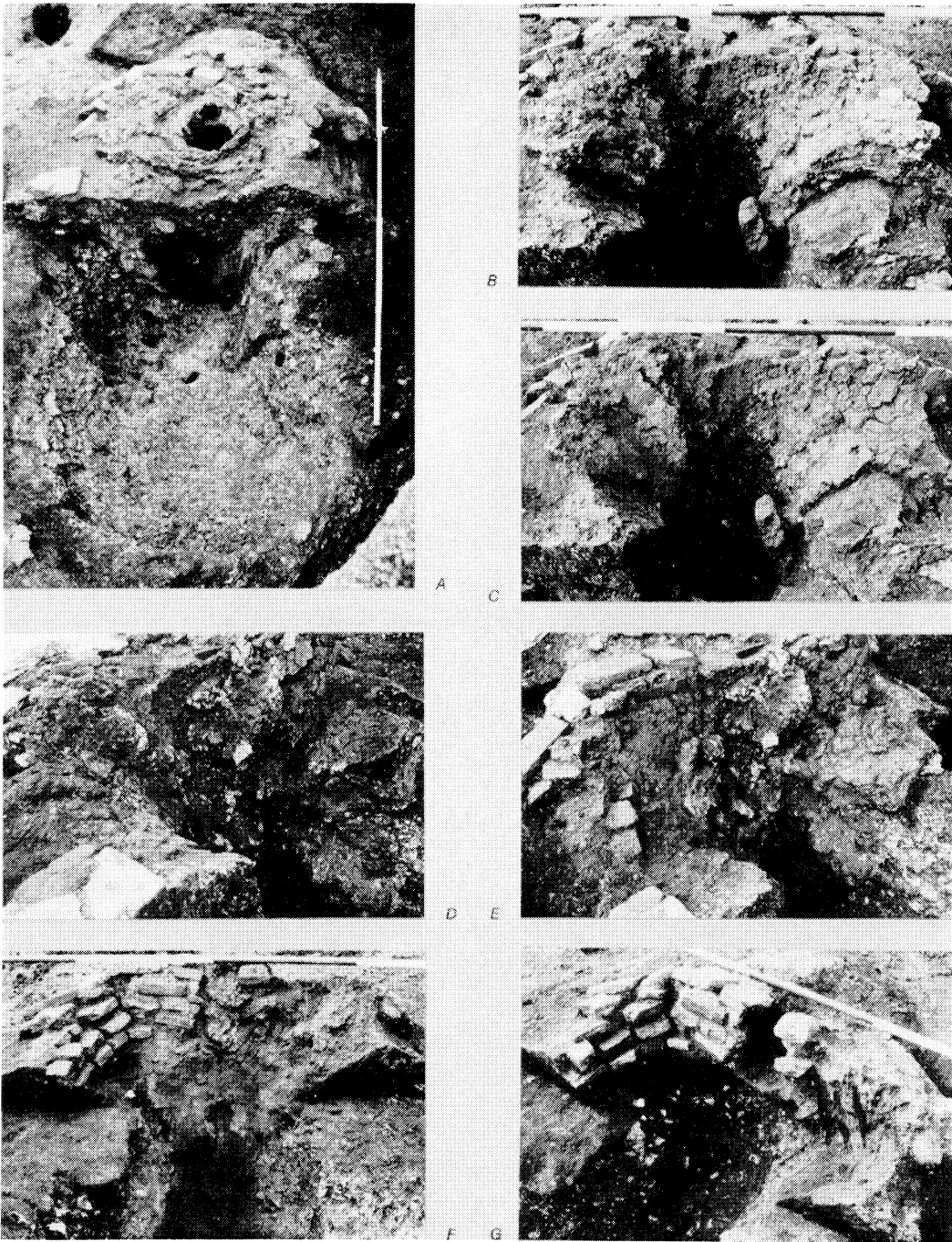
PLATE II



RAMSBURY: A. Furnace 2 part excavated; B. Furnace 2, detail of zones of burning on clay relining (elevation); C. Furnace 3 part excavated; D. Furnace 3, detail of zones of burning on clay relined backing (elevation); E. Smithing hearth (99) looking S.; F. Hearth (117), part excavated, looking W.; G. (?) Furnace hollow (45) from above, showing stake holes; H. Sarsen anvil from S. Scale: ½ m intervals

*Phh.: J. Haslam*

PLATE III



RAMSBURY: FURNACE 4. A. View from S., showing slag-tapping hollow excavated, section across slag-tapping channel, and body of furnace unexcavated; B-G. Stages of excavation of furnace: B, C from S.; D, E from SW.; F from S.; G from SE., showing backing of Roman bricks and charred supporting stakes for superstructure

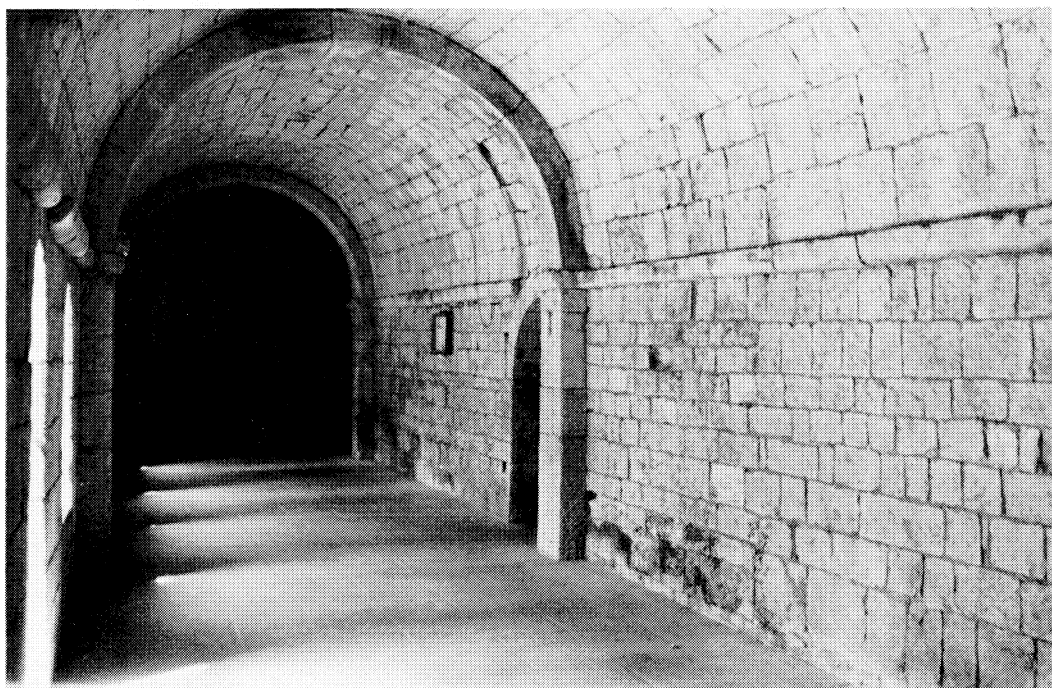
*Ph.:* J. Haslam



PLATE IV



A. LÉRINS. The cloister, exterior



B. LÉRINS. The cloister walk



PLATE V

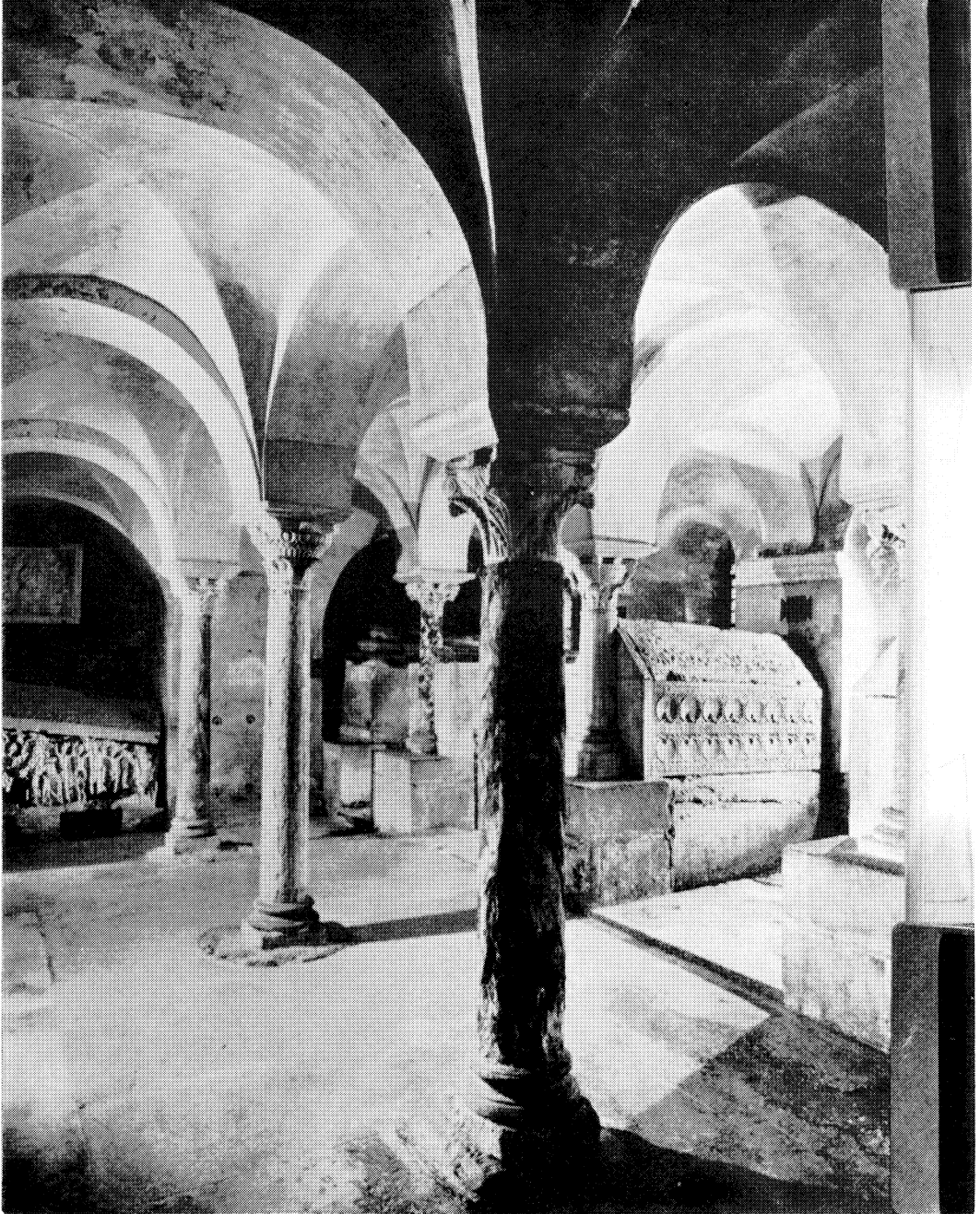


A. LÉRINS. Trinity Chapel, W. end



B. LÉRINS. Trinity Chapel, vault at E. end

PLATE VI

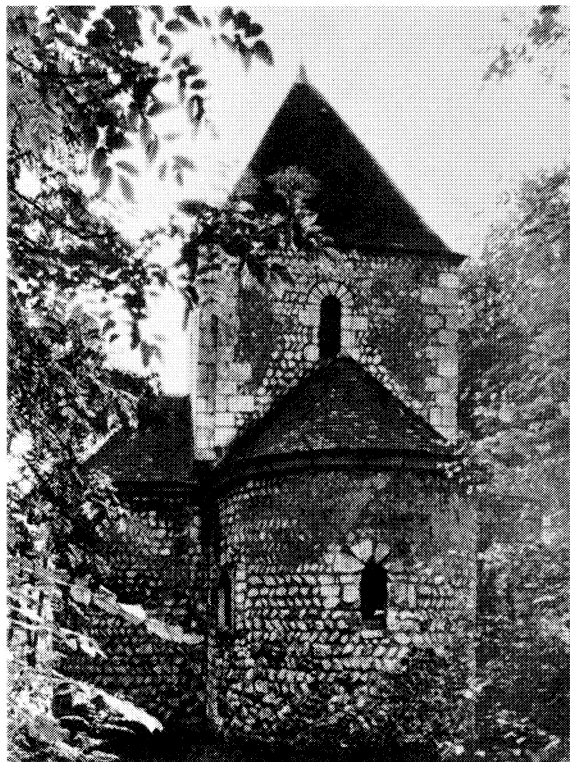


JOUARRE  
General view of the Crypt

PLATE VII



A. JOUARRE. Tomb of Bishop Agilbert



B. FONTENELLE. St Saturnine, E. end



PLATE VIII



A. Stirrups from (*left*) Warwick and (*right*) Chippenham.  
Scale c. 1:3

*Ph.: B. Walkden. By kind permission of Directors of Warwick Castle Ltd., and City of Coventry Museums*



B. Stirrup from the Lady Dorothy Nevill Collection.  
Scale c. 1:3

*Ph.: The Metropolitan Museum of Art, New York*

PLATE IX



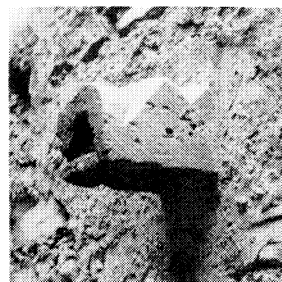
A

LYDFORD

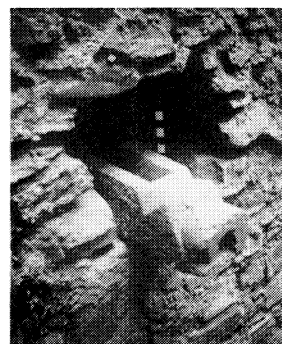
- A. The tower
- B. Tower interior, SE. wall
- C, D. Stone water spout in SW. wall



B



C



D

PLATE X



A. BATSFORD MILL, 1978  
General view of surviving timbers from the SW. Scale 2 m



B. Detail of dovetail joints at the S. end of the wheel-pit. Scale 30 cm



C. Detail of surviving part of the wheel. Scale in cm lying against one of the spokes

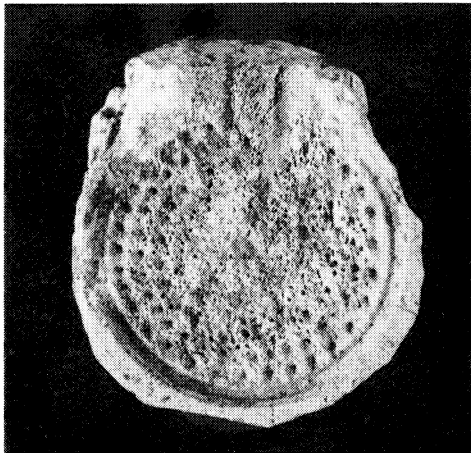


PLATE XI

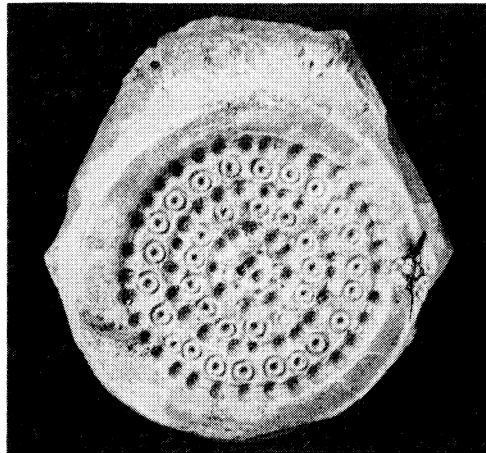


A. MAUGHOLD, ISLE OF MAN  
Stone slab with Chi-Rho

*Ph.: Manx Museum*



B. SOUTHAMPTON  
Antler brooch mould. Scale 1:1

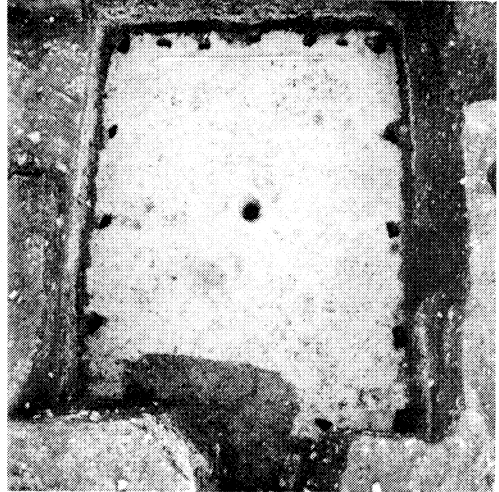


C. HEDEBY  
Antler brooch mould. Scale 1:1

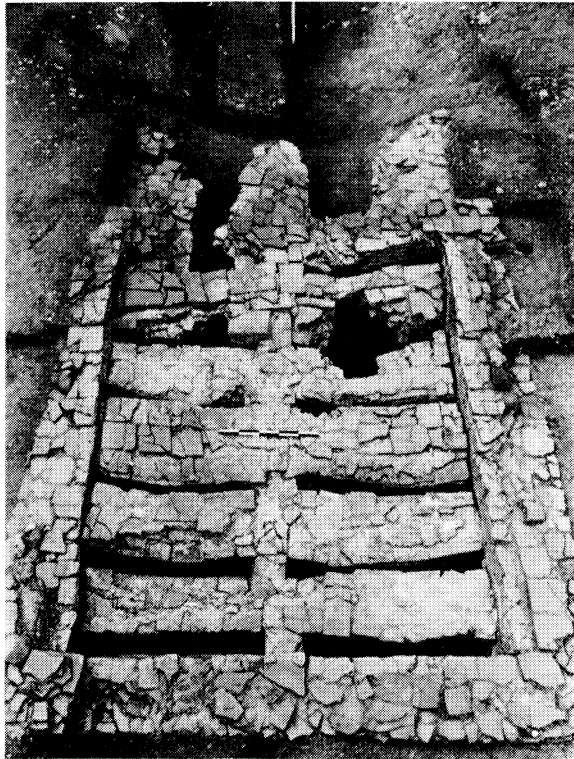
PLATE XII



A



B



C

A. 16 WATLING STREET, CANTERBURY, KENT. General view during excavations showing Saxon huts

B. MARLOW SITE III, CANTERBURY, KENT. Tenth-century cellar

C. RADWINTER, ESSEX. Tile kiln from E

# THE SOCIETY FOR MEDIEVAL ARCHAEOLOGY

## MONOGRAPH SERIES

A series of monographs dealing with particular aspects of the archaeology of the British Isles between A.D. 400 and 1600.

1. G. Bersu and D. M. Wilson, *Three Viking Graves in the Isle of Man* (1966), price £4.50 (£3.50).
2. F. W. B. Charles, *Medieval Cruck-building and its Derivatives* (1967), out of print.
3. P. A. Rahtz, *Excavations at King John's Hunting Lodge, Writtle, Essex, 1955-57* (1969), price £4.50 (£3.50).
4. Audrey L. Meaney and Sonia Chadwick Hawkes, *Two Anglo-Saxon Cemeteries at Winnall, Winchester, Hampshire* (1970), price £3 (£2).
5. H. E. Jean Le Patourel, *The Moated Sites of Yorkshire* (1974), price £5 (£4).
6. G. T. M. Beresford, *The Medieval Clay-land Village: Excavations at Goltho and Barton Blount* (1975), price £4.50 (£3.50).
7. Helen Clarke and Alan Carter, *Excavations in King's Lynn, 1963-1970* (1977), price £12.50 (£10).
8. J. G. Hurst, *Excavations at Wharram Percy, N. Yorks., 1950-1960* (1979), price £7 (£6).

Subscribers to the whole series, whether members of the Society or not, are entitled to each monograph at the lower price (in brackets).

**Obtainable from Mrs A. F. Morley, 6 Church Grove, Little Chalfont,  
Amersham, Bucks., HP6 6SH**

It is hoped that future titles will include: C. M. Mahany *et al.*, *Excavations in Stamford, Lincs.*; P. Mayes, *Kilns at Chilvers Coton, Nuneaton*; C. D. Morris, *Excavations at Brough of Deerness*.



# MEDIEVAL ARCHAEOLOGY

VOLUME XXIV, 1980

Page

JEREMY HASLAM

A Middle Saxon Iron Smelting Site at Ramsbury, Wiltshire . . . . . 1

ERIC FLETCHER

The influence of Merovingian Gaul on Northumbria in the seventh century . . . . . 69

WILFRED A. SEABY and PAUL WOODFIELD

Viking Stirrups from England and their Background . . . . . 87

A. D. SAUNDERS

Lydford Castle, Devon . . . . . 123

OWEN BEDWIN

The Excavation of Batsford Mill, Warbleton, East Sussex, 1978 . . . . . 187

NOTES AND NEWS

A new Chi-Rho from Maughold, Isle of Man (R. Trench-Jellicoe); A pre-Conquest mould of antler from medieval Southampton (Arthur MacGregor); A group of early medieval spades (Carole Morris); A Transitional cloister arcade at Haughmond Abbey, Shropshire (John Blair, Philip Lankester and Jeffrey West); The use of Quarr stone in London and East Kent (T. Tatton-Brown); Tree-ring dating: a reply to D. J. Schove (Ruth A. Morgan); The Newcastle upon Tyne Conference, 1980 (James Graham-Campbell) . . . . . 202

MEDIEVAL BRITAIN IN 1979

I. Pre-Conquest: compiled by Leslie E. Webster . . . . . 218

II. Post-Conquest: compiled by John Cherry . . . . . 236

REVIEWS

B. Hope-Taylor, *Yeaving: an Anglo-British centre of early Northumbria* (Philip Rahtz); Martin Bell, *Excavations at Bishopstone* (T. C. Champion); Vera I. Evison, *Wheel-thrown pottery in Anglo-Saxon graves* (Richard Hodges); Susan Pearce, *The Kingdom of Dumnonia* (Leslie Alcock); R. A. Hall (ed.), *Viking Age York and the North* (Ingmar Jansson); Olaf Olsen and Holger Schmidt, *Fyrkat, En jysk vikingeborg. I. Borgen og Bebyggelsen*, and Else Roesdahl, *Fyrkat, En jysk vikingeborg. II. Oldsagerne og gravpladsen* (P. H. Sawyer); P. L. Drewett (ed.), *Archaeology in Sussex to A.D. 1500* (Martin Welch); Michael Farley, *Saxon and Medieval Walton, Aylesbury* (Guy Beresford); Denise Fossard, May Vieillard-Troiekouroff and Elisabeth Chatel, *Recueil Général des Monuments Sculptés en France pendant le Haut Moyen Age (IVe-Xe siècles). Tome I. Paris et son Département* (Edward James); Peter Addyman and Richard Morris (eds), *The archaeological study of churches* (Gunther Fehring); Warwick Rodwell with Kirsty Rodwell, *Historic churches — a Wasting Asset* (R. D. H. Gem); M. L. Parry, *Climatic change, Agriculture and Settlement* (Guy Beresford) . . . . . 265

ACCOUNTS OF THE SOCIETY, 1979 . . . . . 288

LIST OF OFFICERS AND COMMITTEES OF THE SOCIETY, 1980 . . . . . 292