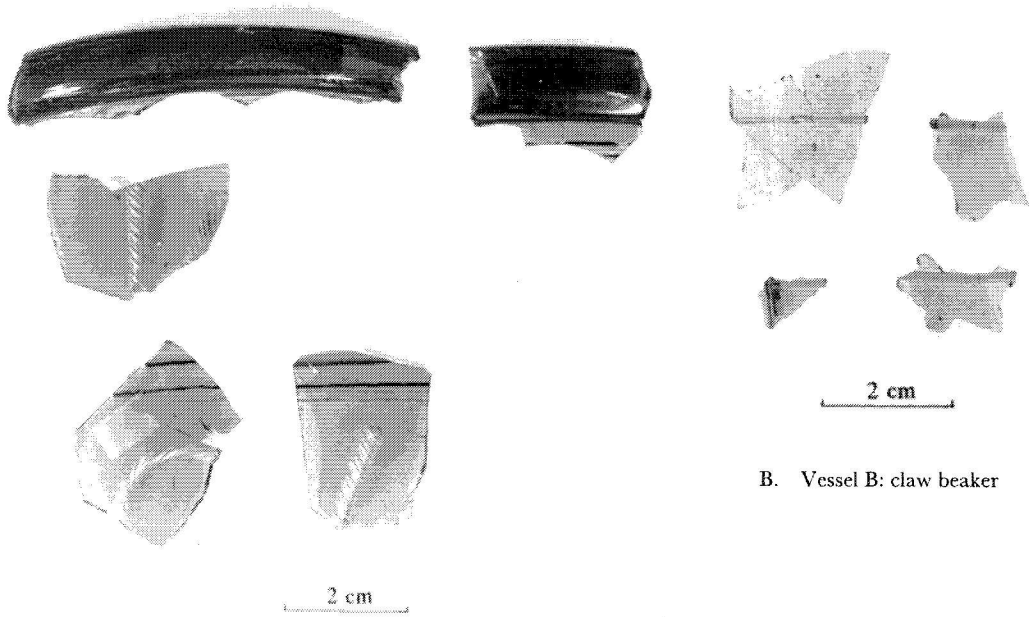
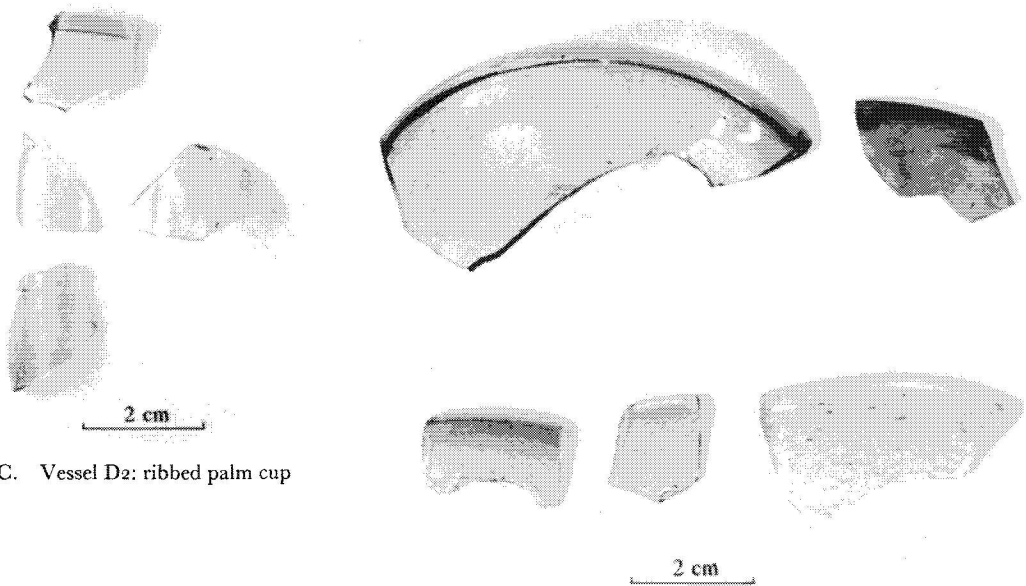


PLATE I



A. Vessels A1-2: filigree bowls

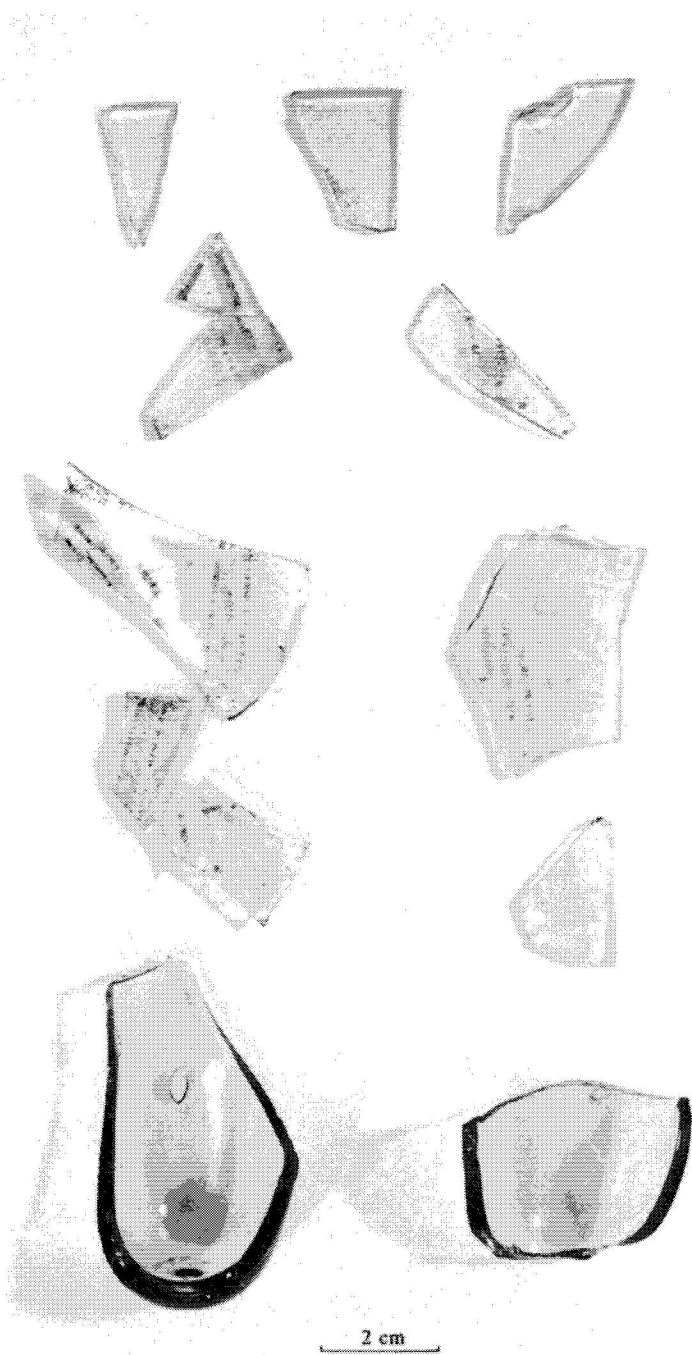
B. Vessel B: claw beaker



C. Vessel D2: ribbed palm cup

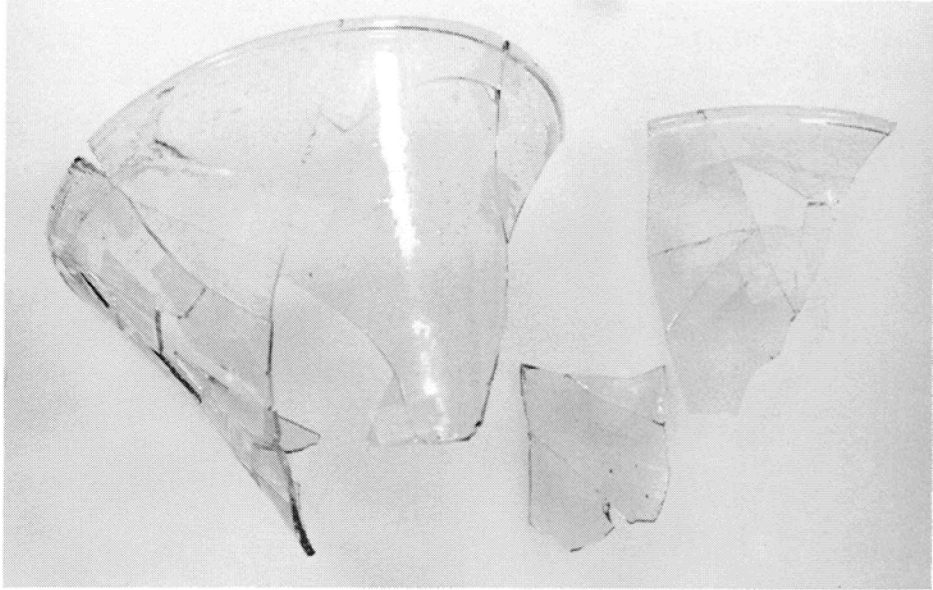
D. Top left, D1: palm cup; top right, D3: palm cup or funnel beaker;
Bottom left to right, D5: ?funnel beaker; H: funnel beaker; F: palm

PLATE II

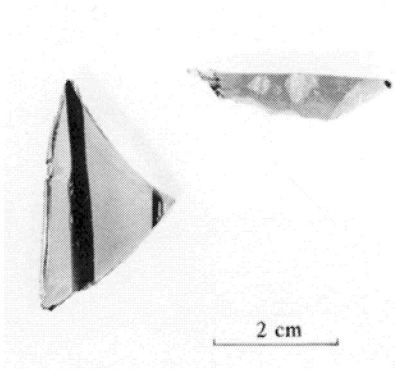


Vessel C: gold glass

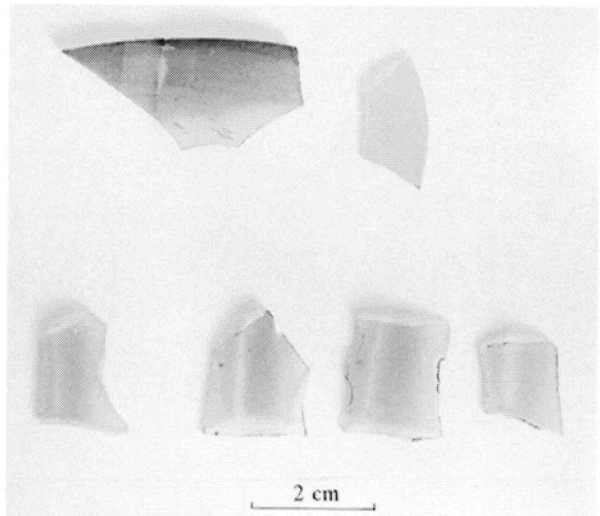
PLATE III



A. Vessel E: funnel beaker



B. Left, Vessel I; right, Vessel J

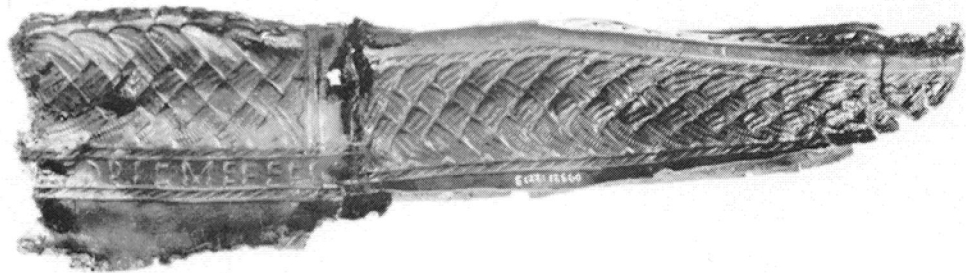
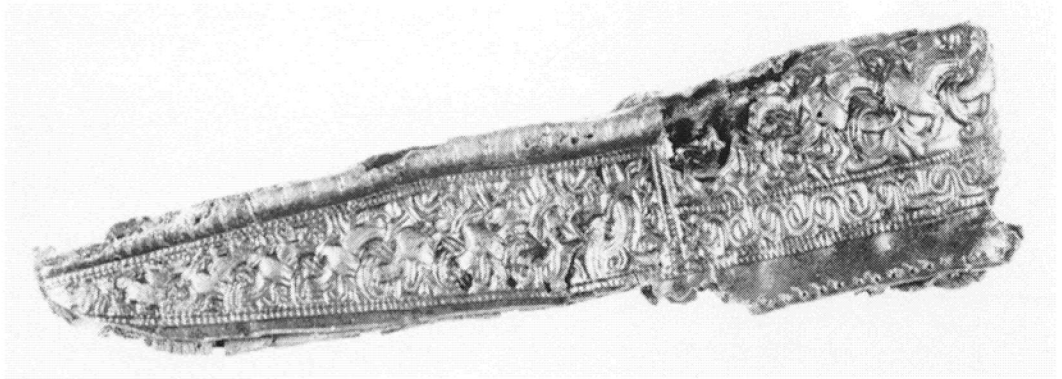


C. Top, Vessel G1: high-potassium glass;
bottom, Vessel G2: high-potassium glass

PLATE IV

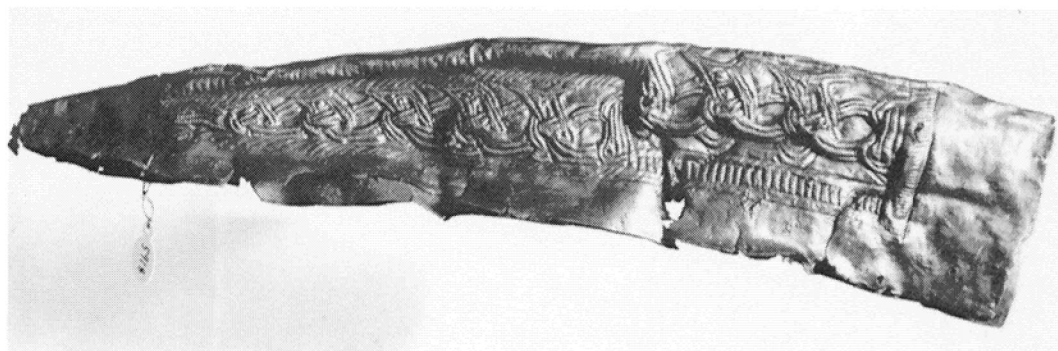
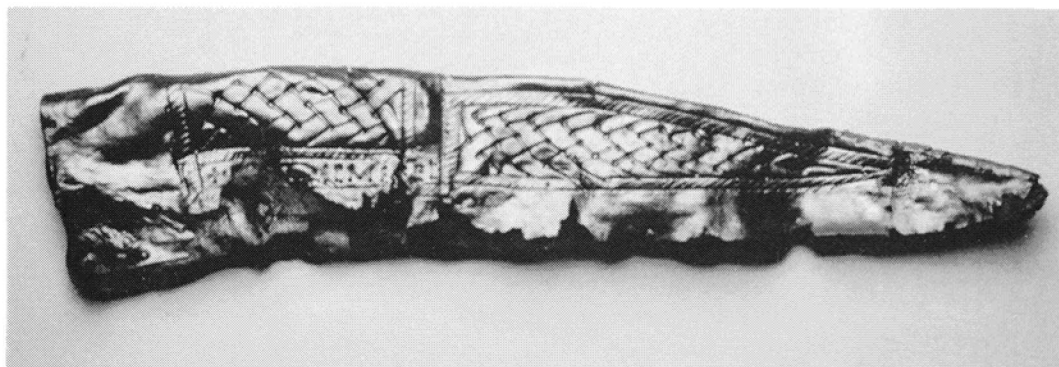


A. Aachen scabbard



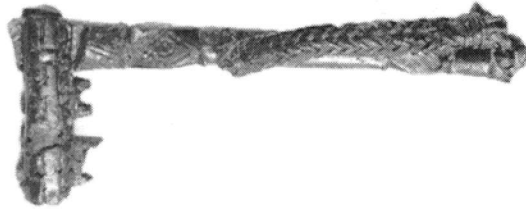
B, C. Dublin scabbard

PLATE V



A, B. Trondheim 1 scabbard

PLATE VI



LATE SAXON BALANCES

A. Balance from 198, High Street, Exeter



RUMNEY CASTLE

B. Ram's head jug

PLATE VII



A. Timber gate; post holes of Periods I–III and stone surface of Period III



B. Post pits for buildings A, B, and E. The Period VI drainage ditch is in the foreground

RUMNEY CASTLE

PLATE VIII



A. Period VI hall, Building H, after removal of roof debris and before excavation of the interior



B. NE wall of Period VI hall, Building H, pierced by a drain
RUMNEY CASTLE

PLATE IX

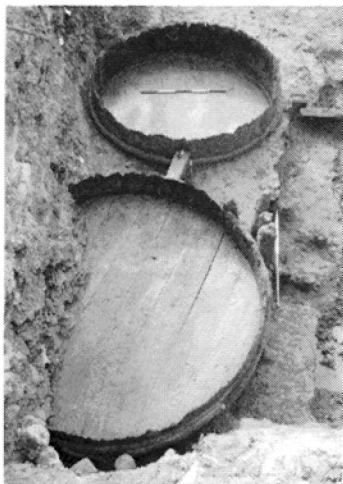


A. LINKED PIN FROM THORPE SALVIN



B. JEWISH TOMBSTONE FROM NORTHAMPTON,
c. 1259 to 1290

PLATE X



BLAYDES STAITHE, HULL,
HUMBERSIDE

A. Vats viewed from the E.



CASTLE BRIDGE, NORWICH, NORFOLK

B. S. abutment showing stepped Caen stone
foundation



BARNABY HOUSE, LUDLOW, SHROPSHIRE

C. Exterior view

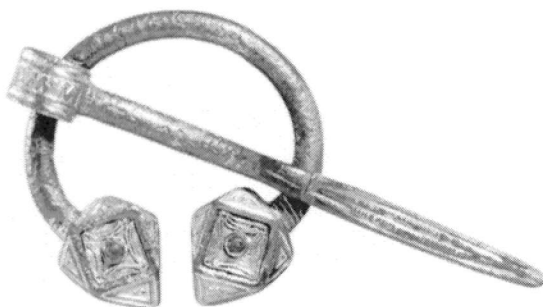
PLATE XI



LUDLOW CASTLE, SHROPSHIRE

Late 11th-century stepped mural passage within original curtain wall E. of the NE. corner tower

PLATE XII



NEWTON MOOR
A. Penannular brooch



LLANGORSE CRANNOG, POWYS
B. Pseudo-penannular brooch terminal
C. Incomplete reliquary strap-hinge

