

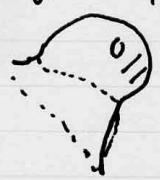
Pig femur

P923 (6) Unfused bone, + knife mark on shaft below head
 e on shaft near p end

P1070 (13) VF d epiph + Chops across hont nr epiph.

L472 Knike mks across shaft c 1/4 down shaft.

L551 Knike whs on head



Ph 1247 (2) Fem d epiph (VF) knike mks for sep of hum. e tis.

L122 Knike mks on back d epiph.

L914 Knike ct across back shaft adme d atic.

Figure 3.1: Image of an original catalogue card for butchery recording, completed by Annie Grant during the Identification of the Danebury bone assemblage.

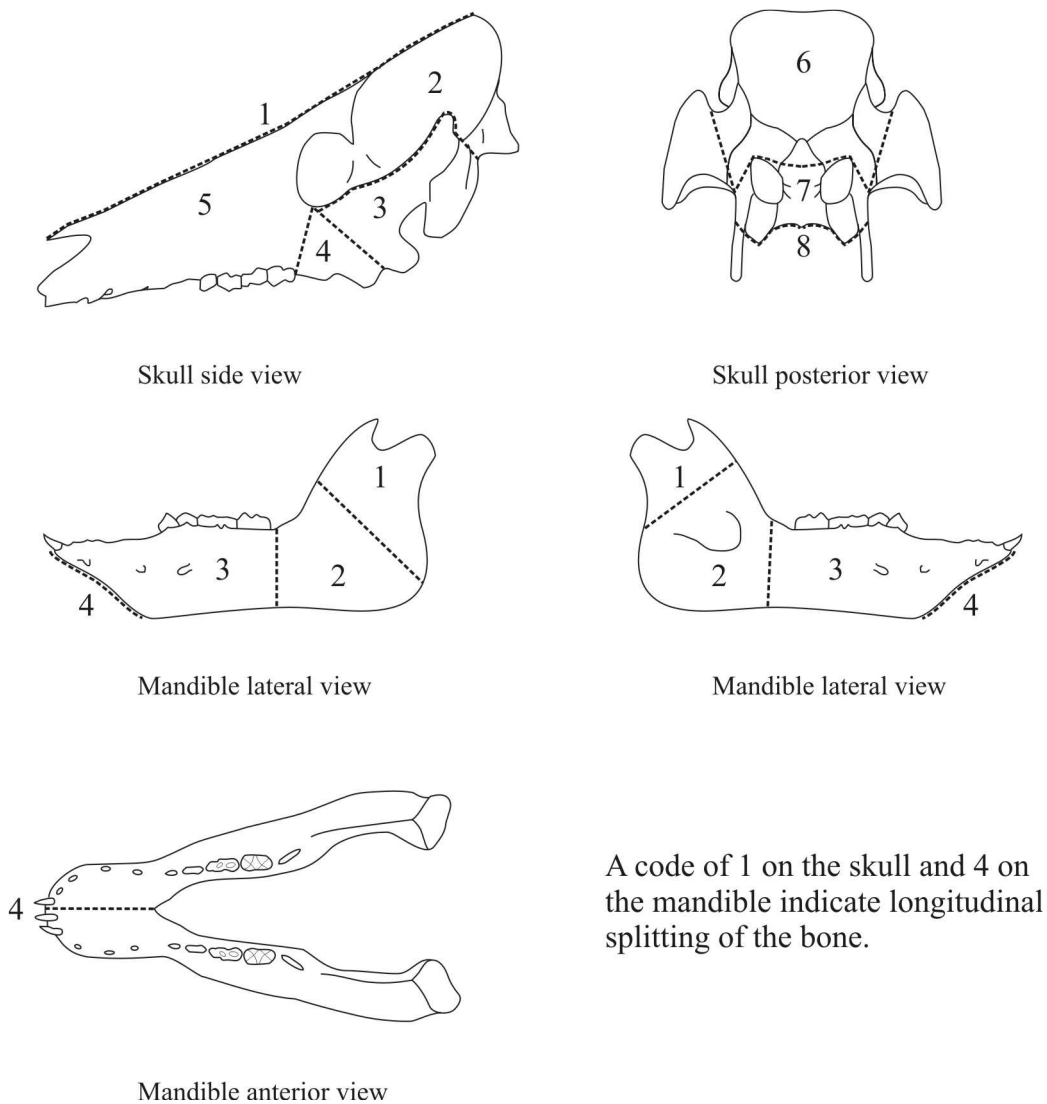


Figure 3.2: Codes for bone element zones: head.

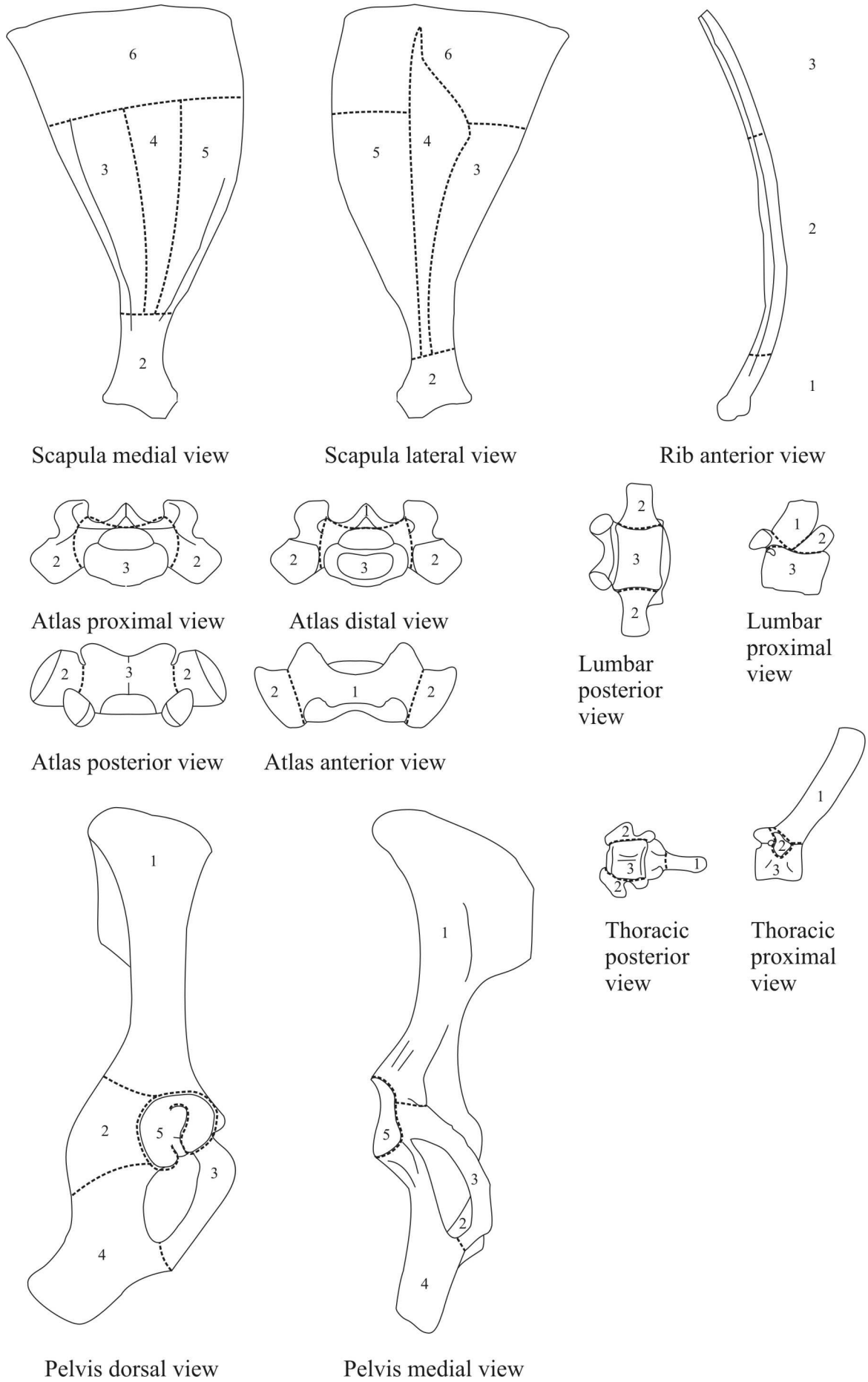


Figure 3.3: Codes for bone element zones: torso.

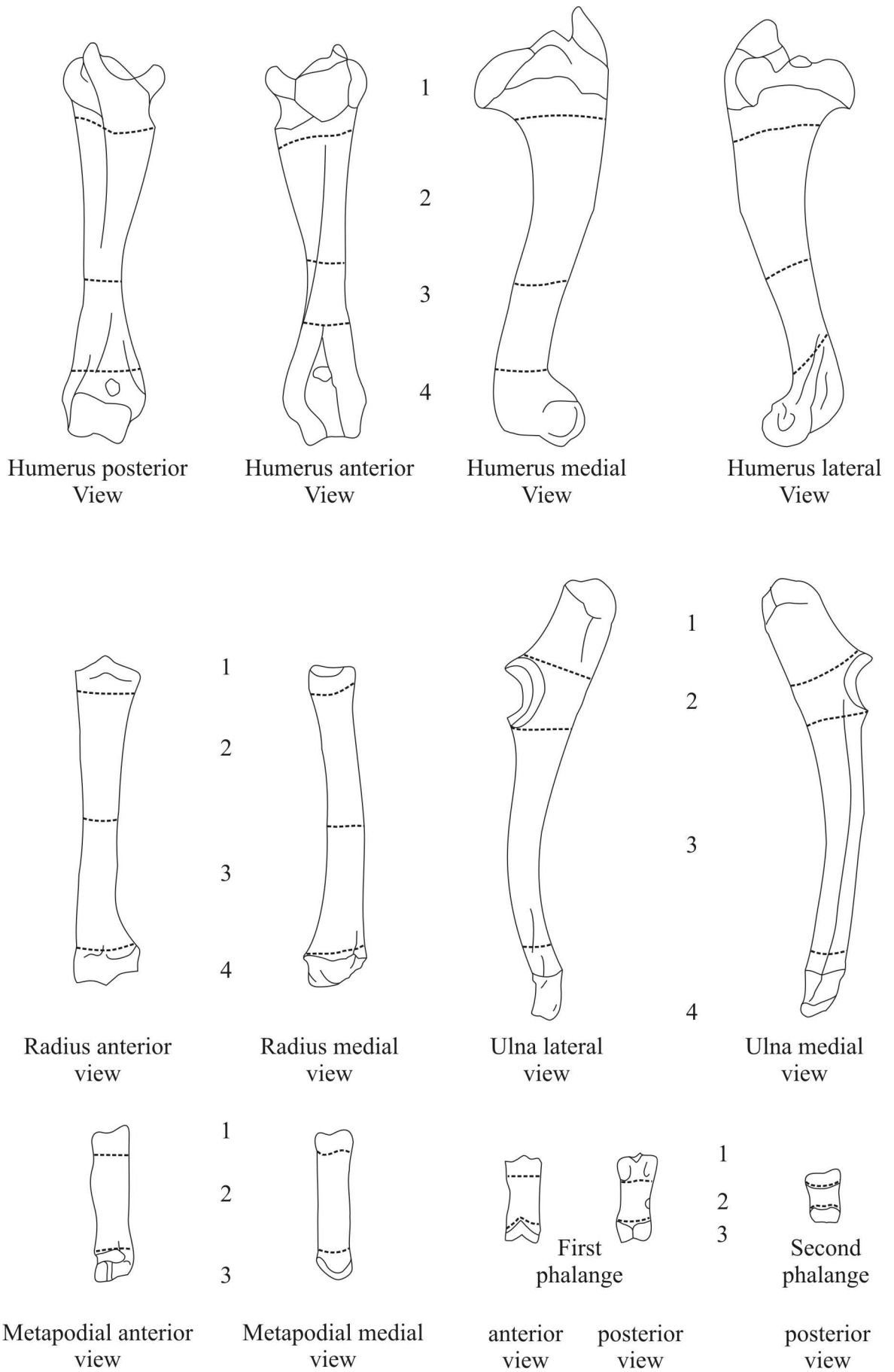


Figure 3.4: Codes for bone element zones: forelimb, metapodials and phalanges.

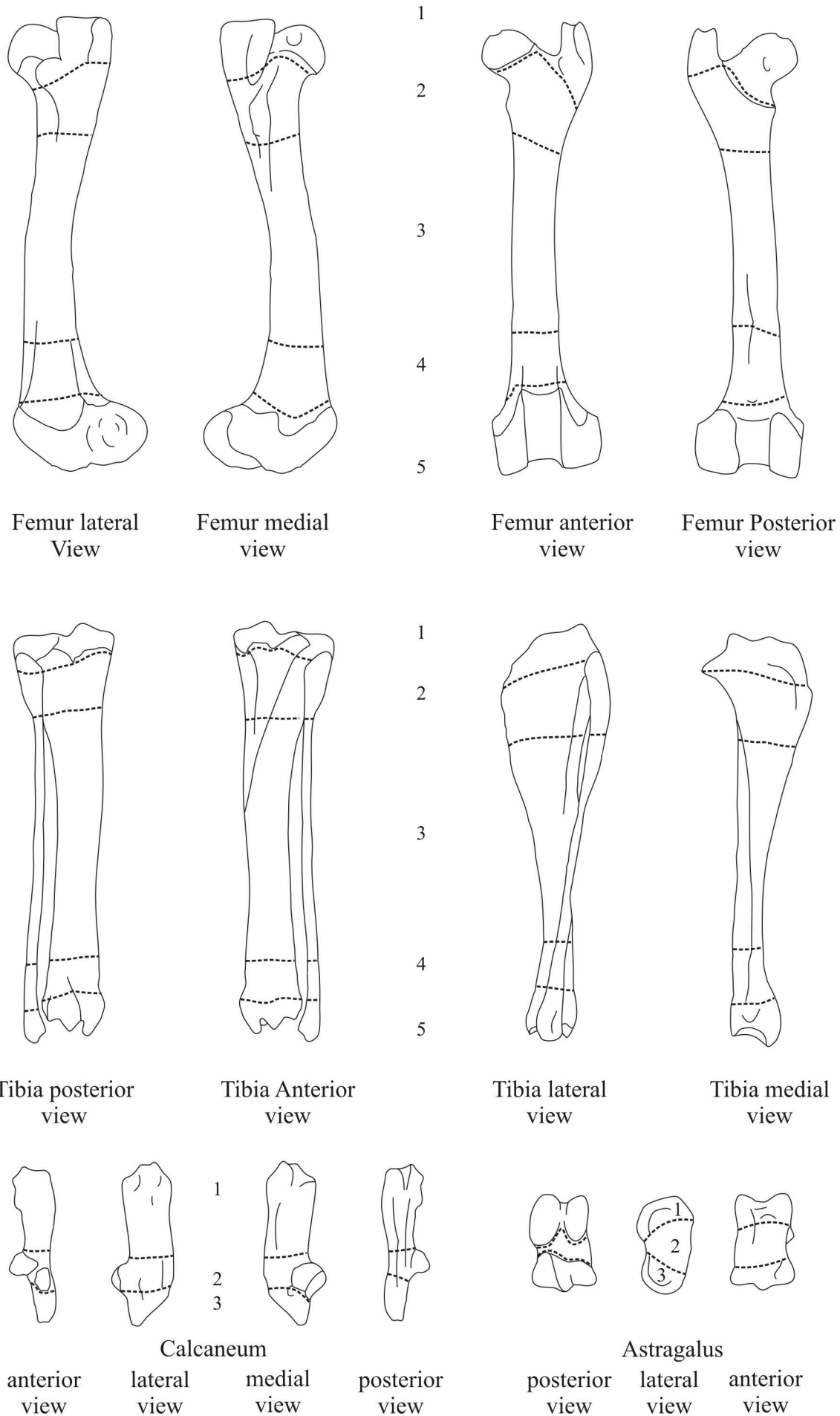


Figure 3.5: Codes for bone element zones: hindlimb.

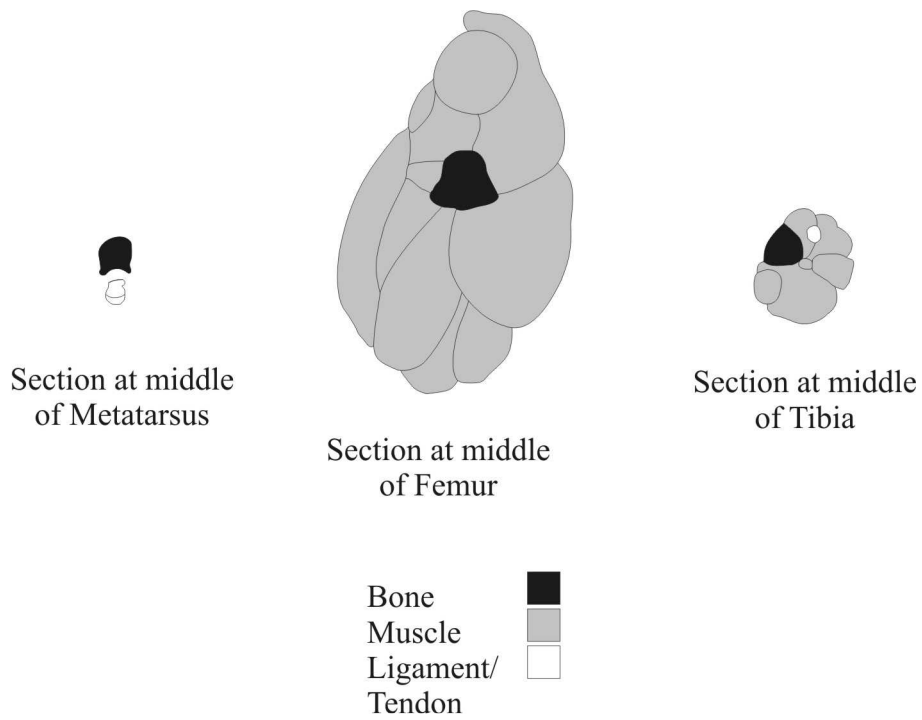


Figure 3.6: Flesh covering on bone elements of a horse hind limb. After: Thompson 1896: plate XXXIII.

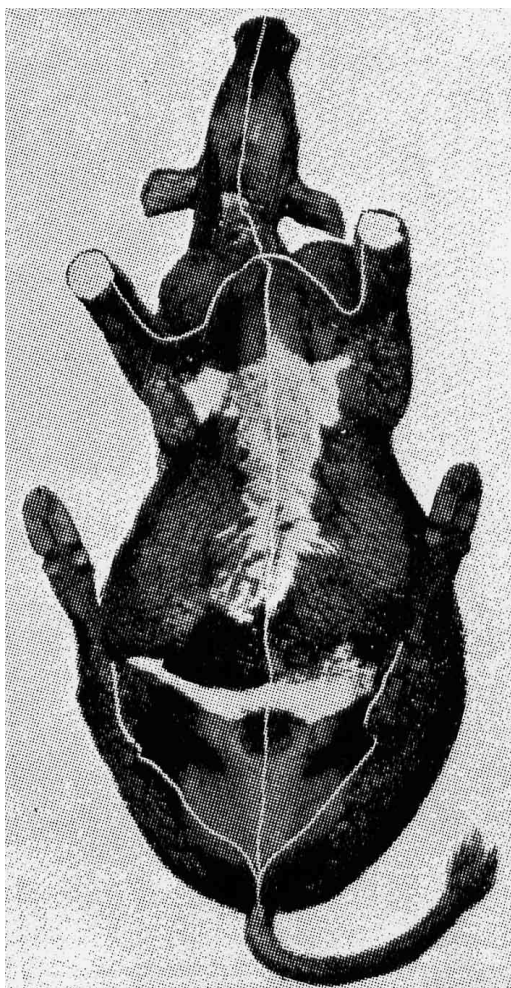


Figure 3.7: Positions for scoring the hide of a modern ox in preparation for skinning. Source: Gerrard 1964: 77.