

Figure 1: Exploitable aggregates in Worcestershire covered by the resource assessment

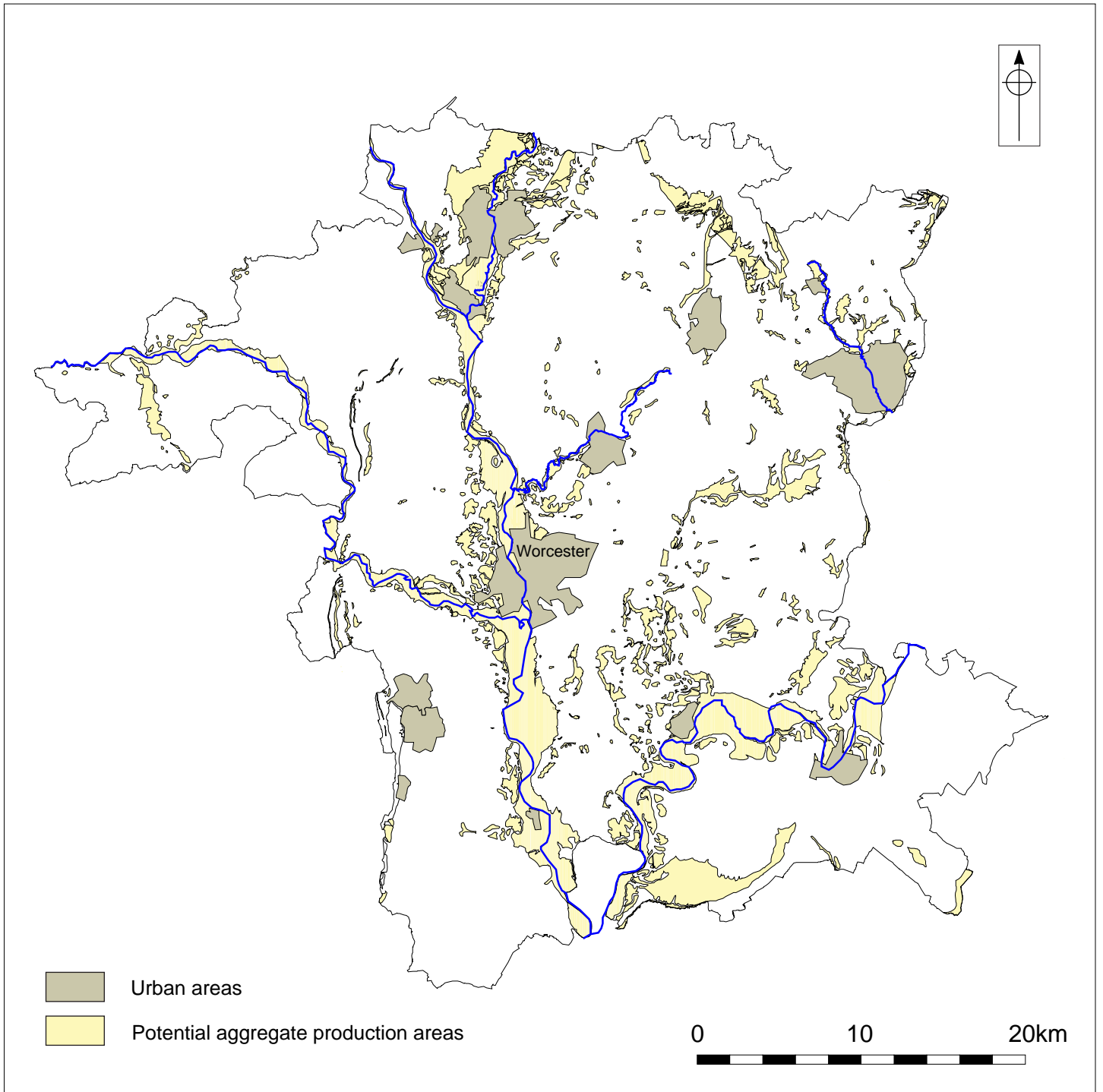


Figure 2: Study area

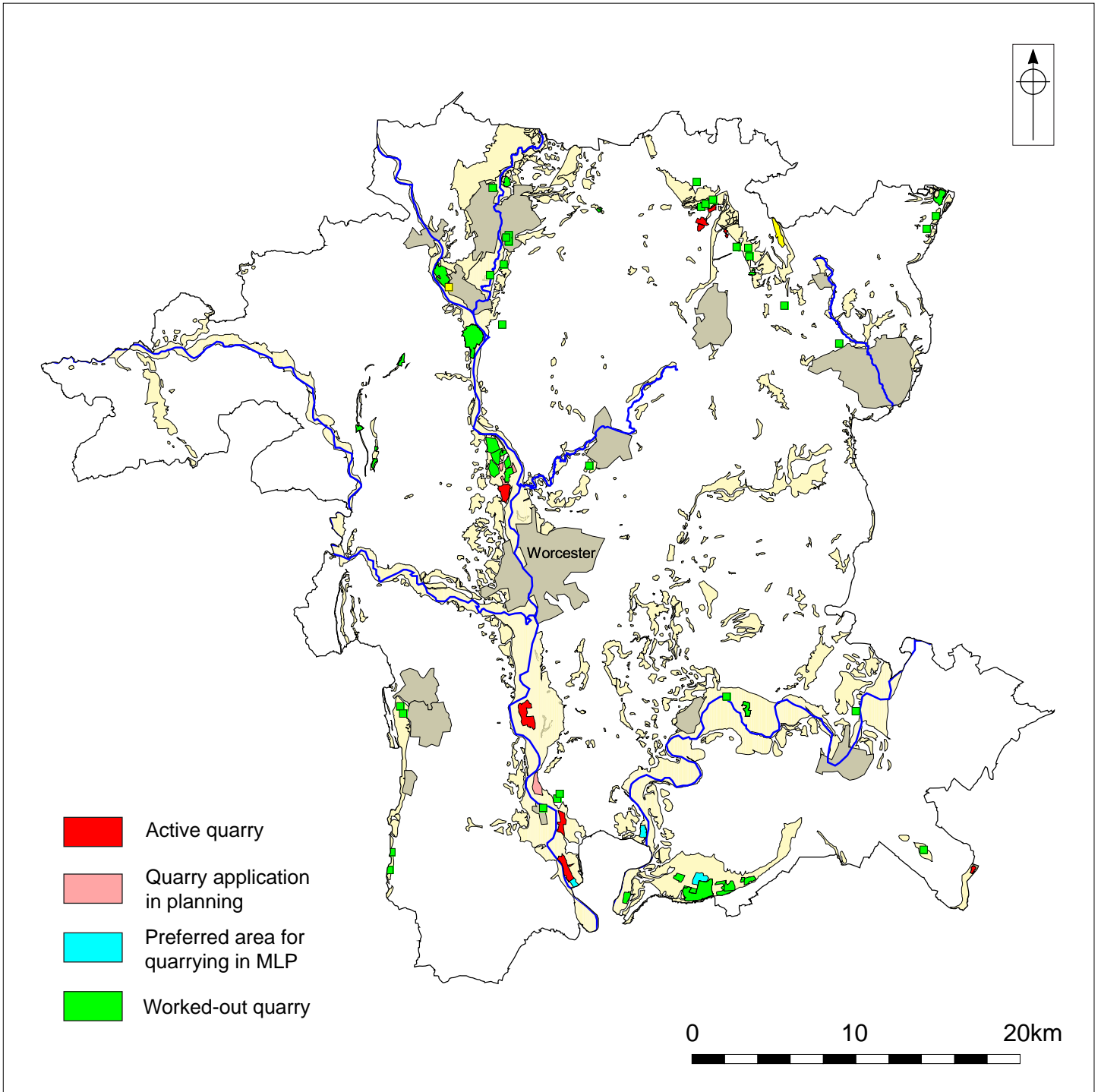


Figure 3: Aggregate extraction sites

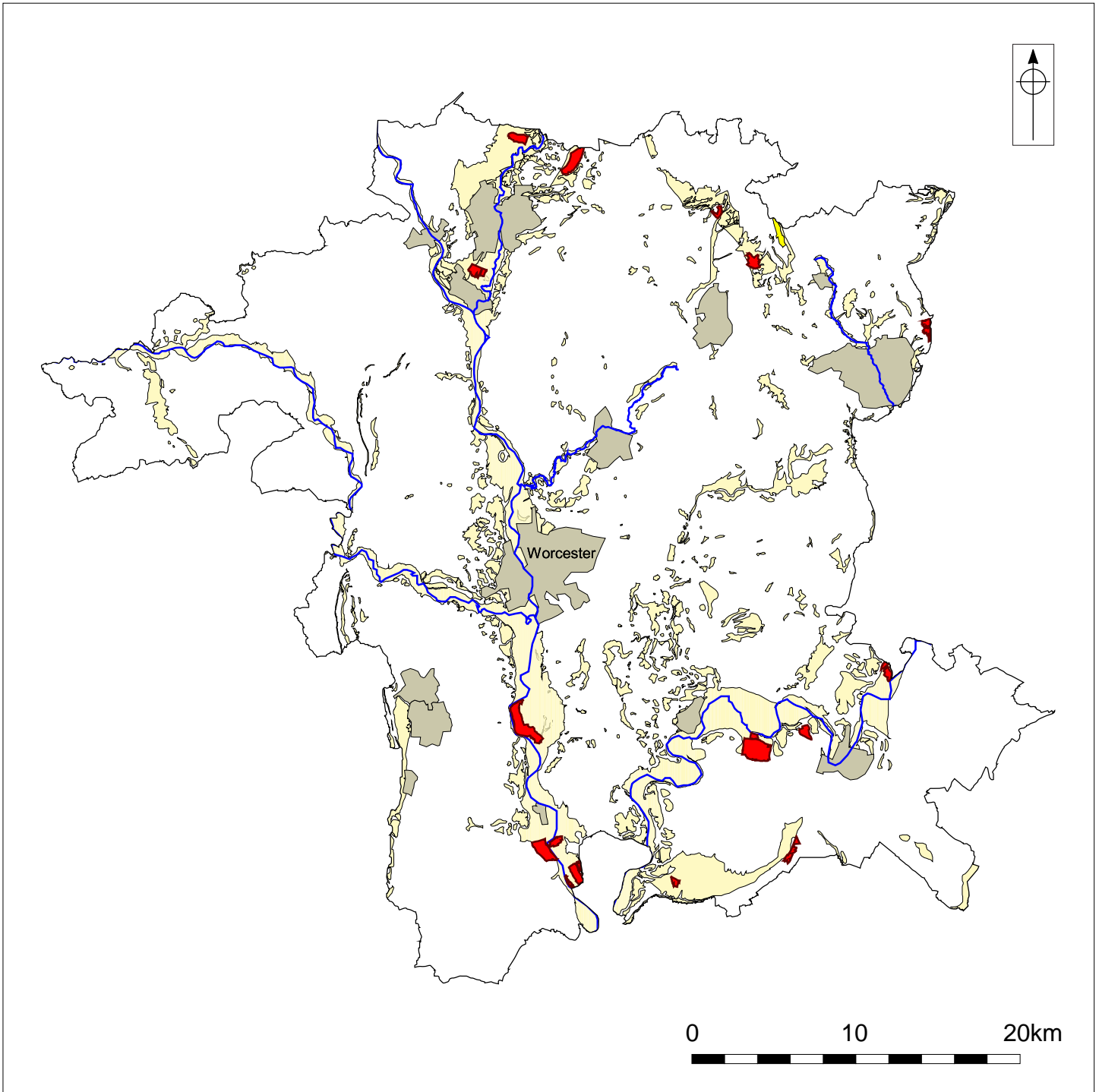


Figure 4: Previously considered areas for aggregate extraction

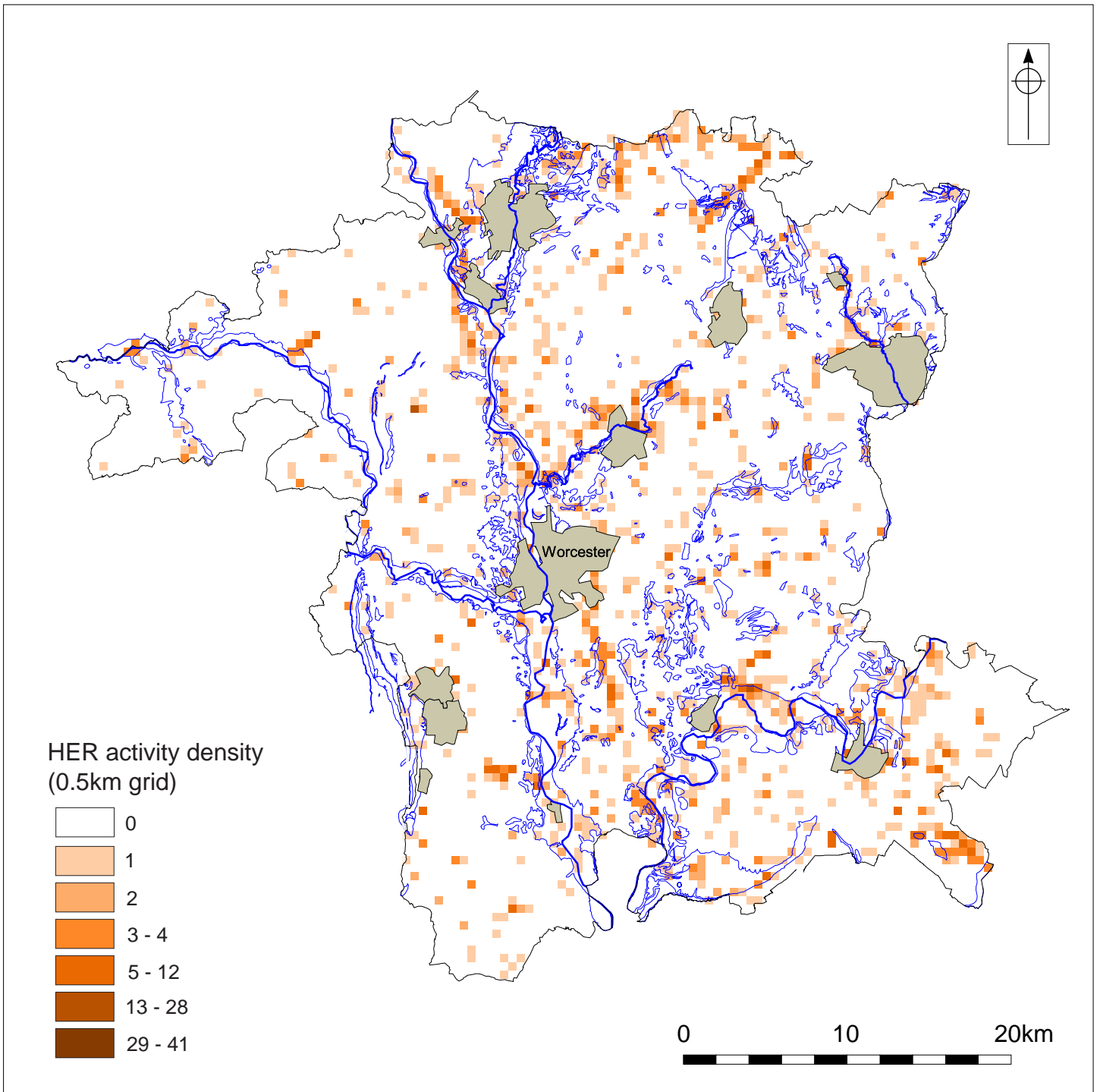


Figure 5: Distribution of archaeological activity recorded on the HER (sites/0.5km², study area outlined in blue)

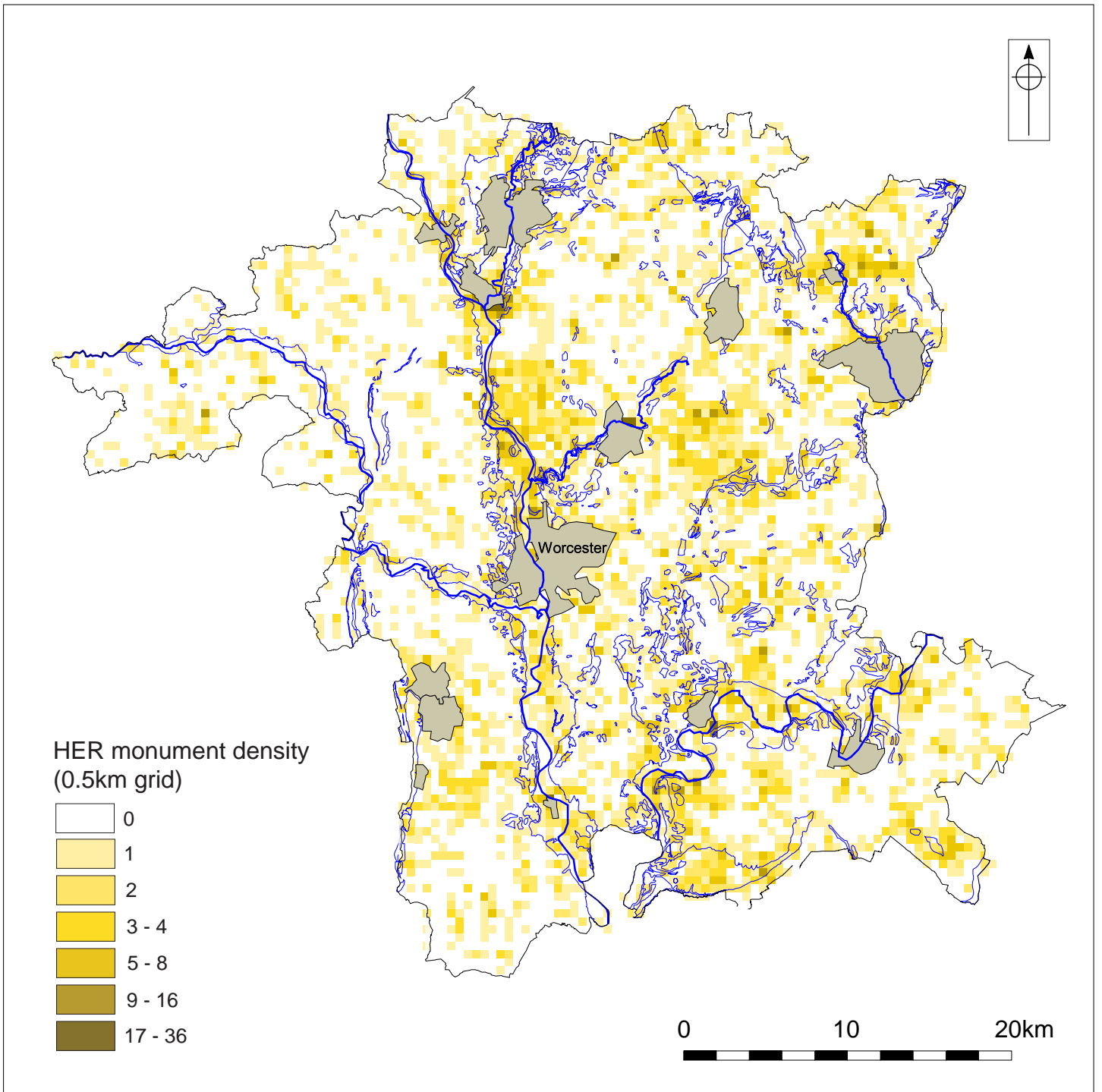


Figure 6: Distribution of archaeological monuments recorded on the HER (sites/0.5km², study area outlined in blue)

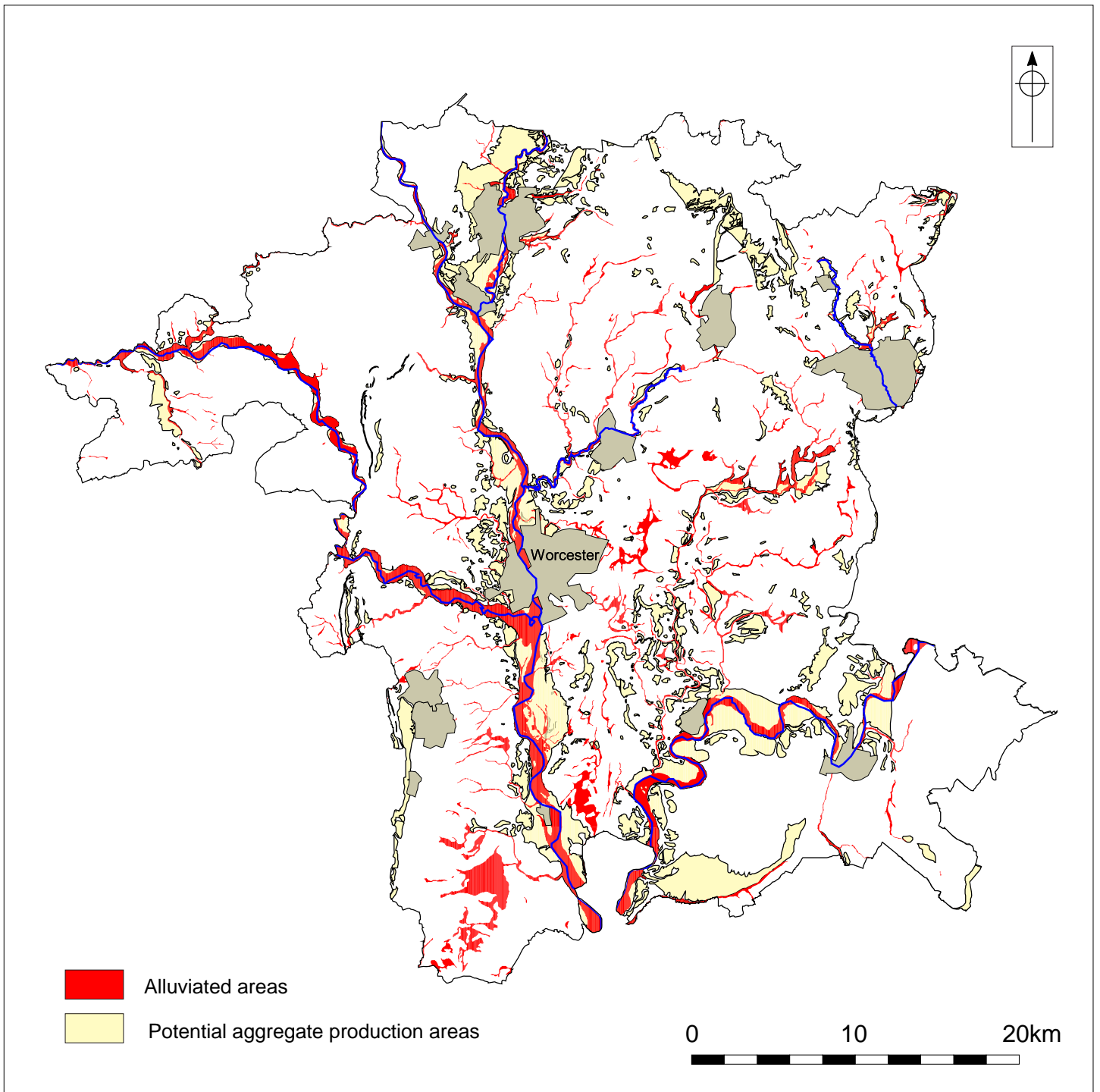


Figure 7: Distribution of alluvial deposits

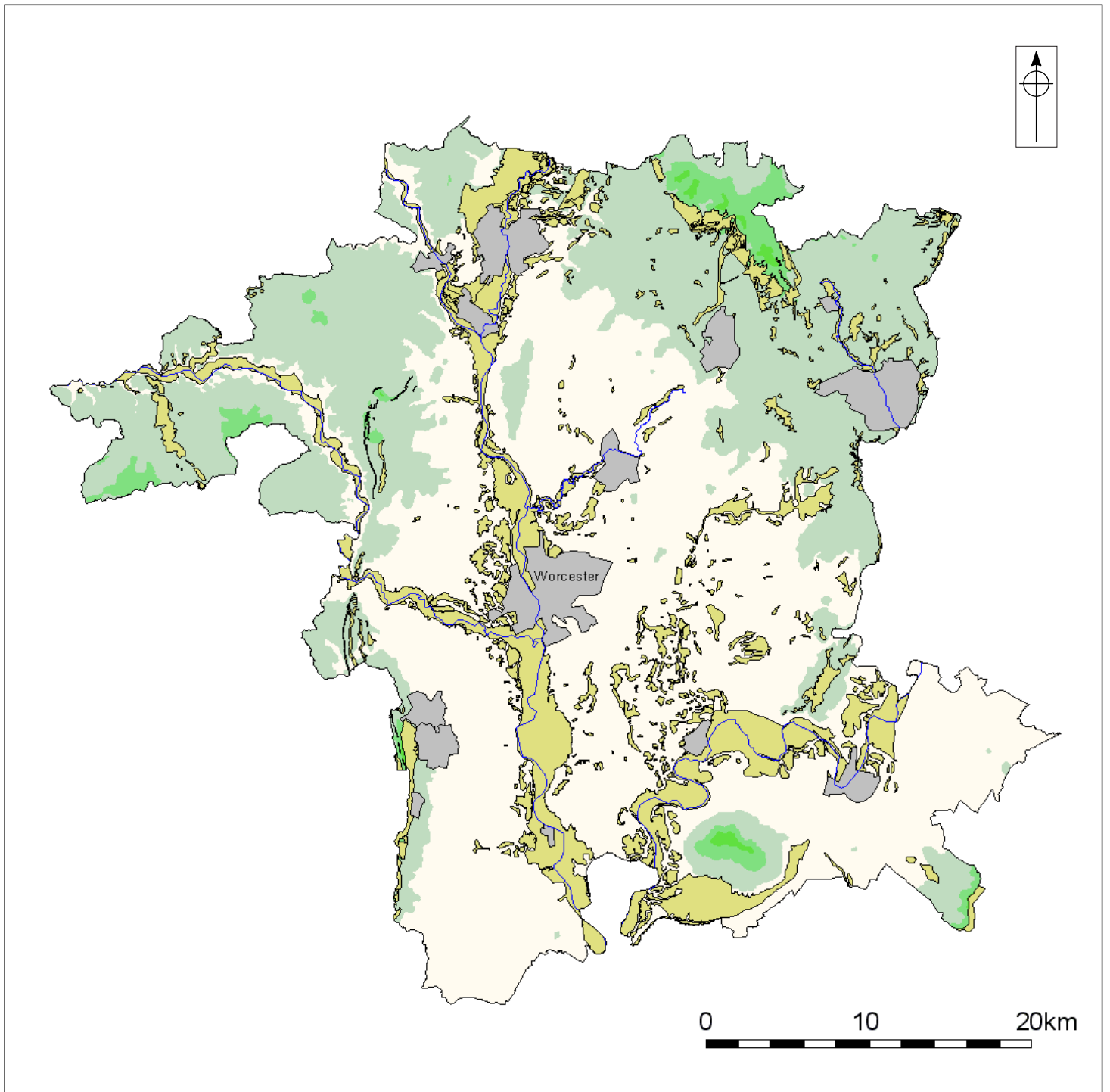


Figure 8: Topography

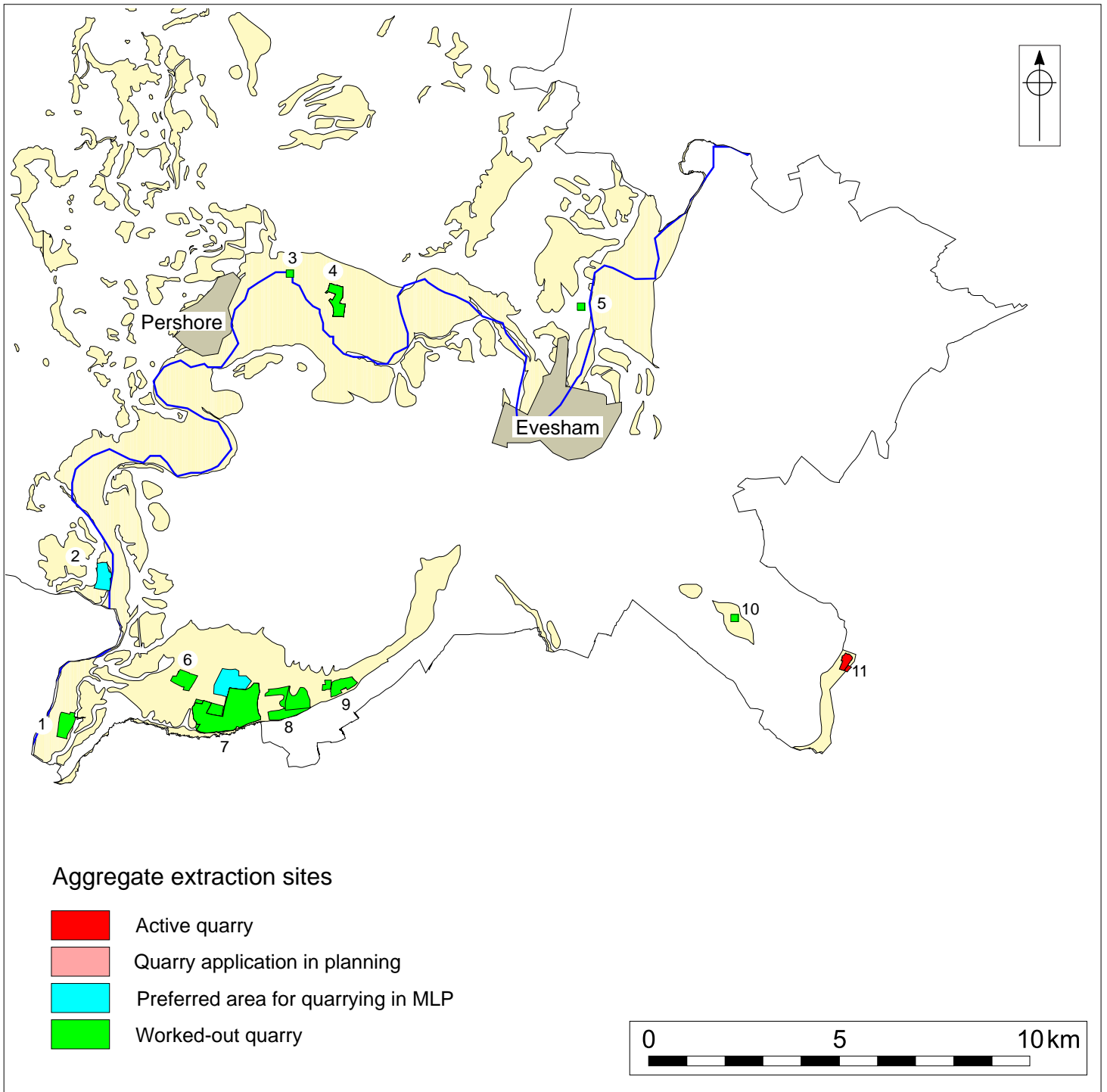


Figure 9: Quarries in south-east Worcestershire

Avon Valley:

- 1: Gellester's Farm, Bredon's Hardwick
- 2: Strensham
- 3: Upper Moor
- 4: Salter's Lane, Lower Moor
- 5: Offenham

Carrant Valley:

- 6: Huntsman's Quarry, Kemerton
- 7: Aston Mill
- 8: Carrant Brook
- 9: Beckford

Other:

- 10: Millstone Ground, Broadway
- 11: Fish Hill, Broadway

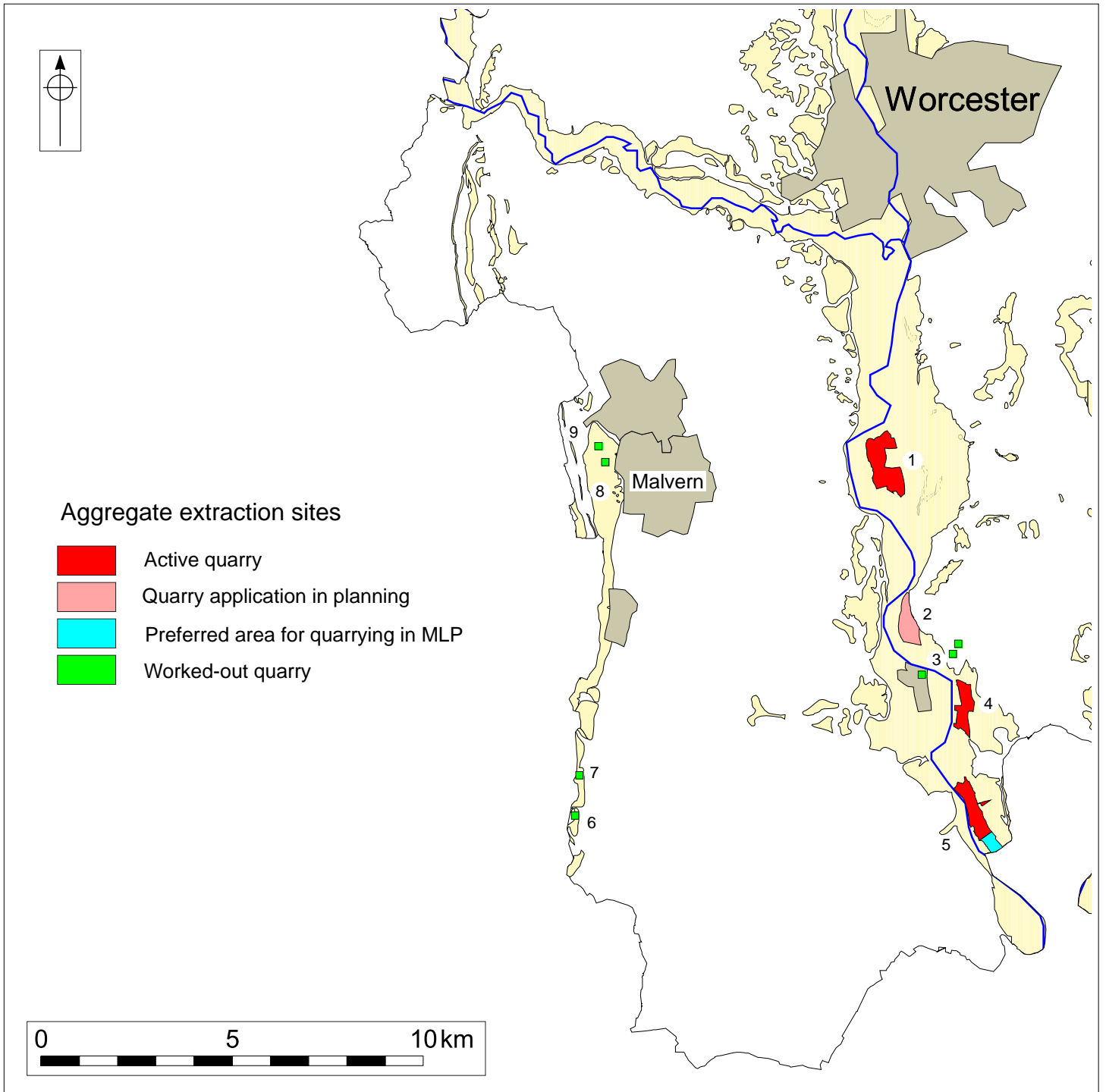


Figure 10: Quarries in south-west Worcestershire

Severn Valley (south):

- 1: Clifton Quarry
- 2: Ryall House Farm (north)
- 3: Holly Green 1, 2 and 3
- 4: Ryall House Farm and Saxon's Lode
- 5: Bow Farm, Ripple

Hard rock quarries in the Malvern Hills:

- 6: Holly Bush
- 7: Gullet
- 8: North Malvern Scar
- 9: Tank

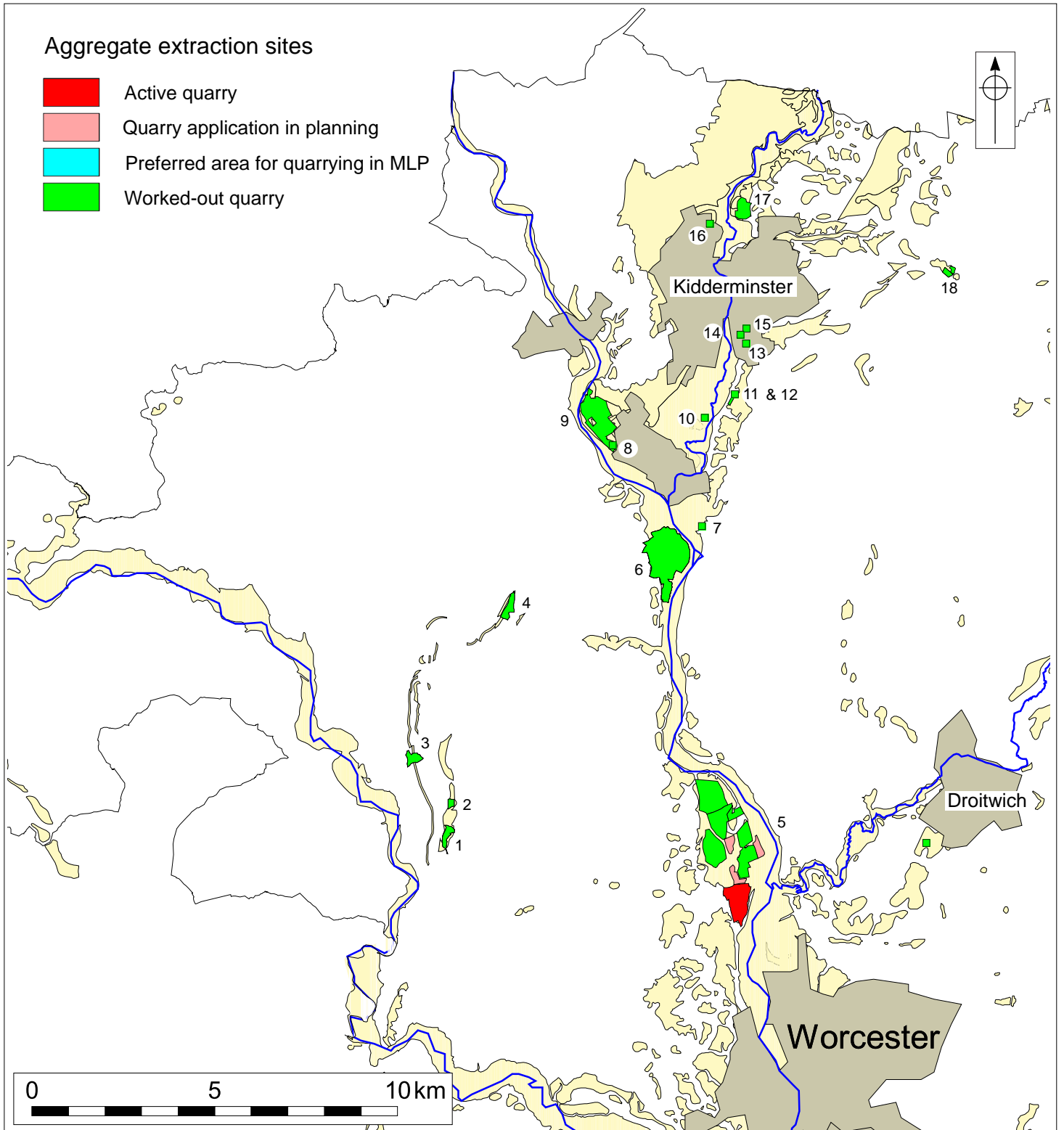


Figure 11: Quarries in north-west Worcestershire

Abberley Hills:

- 1: Penny Hill
- 2: Rodge Hill
- 3: Woodbury
- 4: Shaver's End

Severn Valley:

- 5: Ball Mill
- 6: Larford
- 7: Tilton
- 8: Lickhill
- 9: Brant Farm

Stour Valley:

- 10: Bonemill
- 11: Stourhill
- 12: Hoo Farm
- 13: Highfield
- 14: Zenith
- 15: Hoo Road
- 16: Puxton
- 17: Wolverley
- 18: Barnet Hill

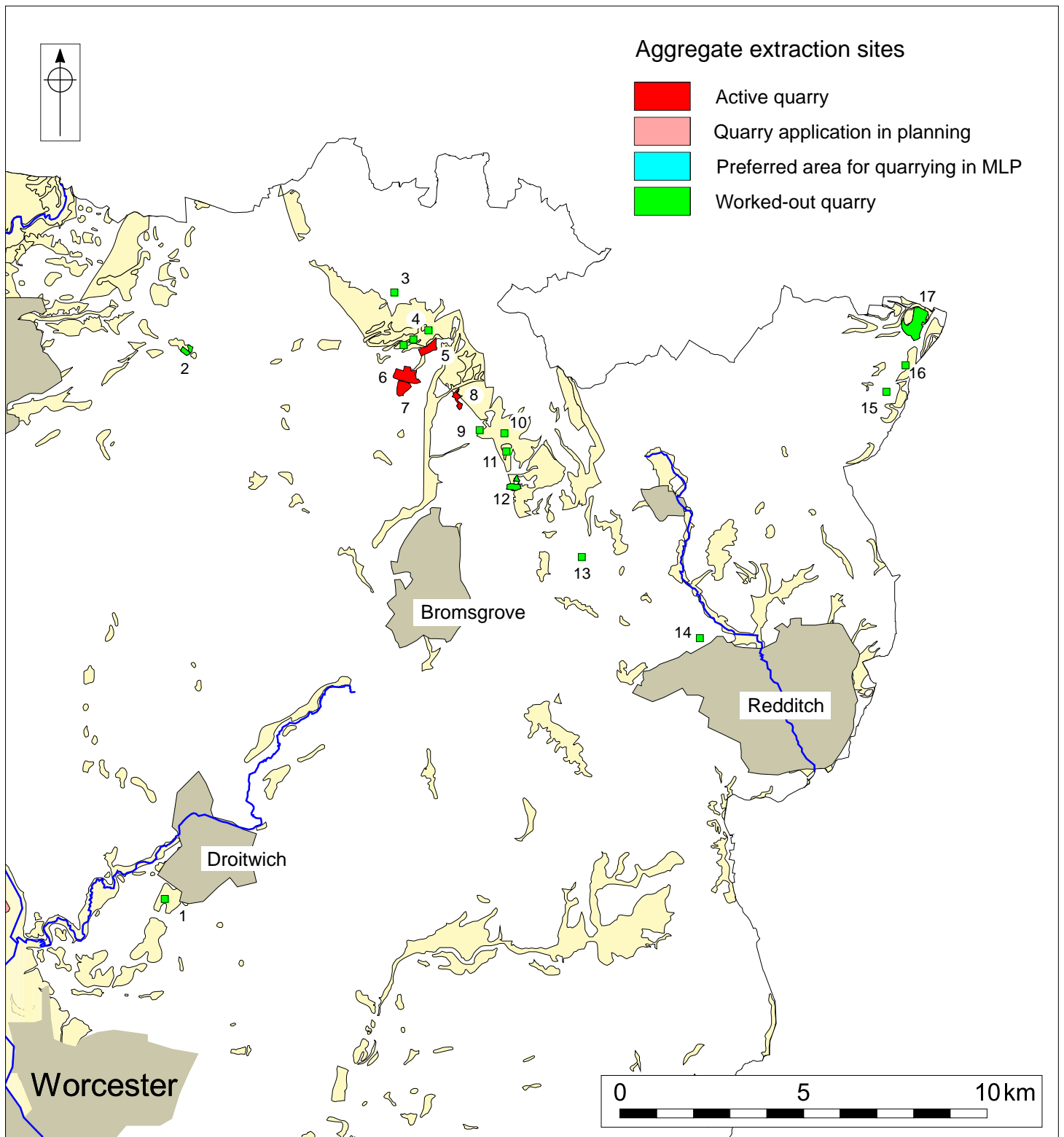


Figure 12: Quarries in north-east Worcestershire

- | | | | |
|--------------------------|------------------------------|--------------------|-----------------------|
| 1: Copcut Farm | 5: Chadwick Lane | 9: Belle Vue | 13: Cattespool Farm |
| 2: Barnet Hill | 6: Sandy Lane (Harbour Hill) | 10: Marlbrook | 14: Lowan's Hill Farm |
| 3: Shut Hill | 7: Cinetic Sands | 11: Linehouse Lane | 15: Grime's Hill |
| 4: Belbroughton 1, 2 & 3 | 8: Chadwick Mill Farm | 12: Skepley | 16: Houndsfield Lane |
| | | | 17: Shirley |

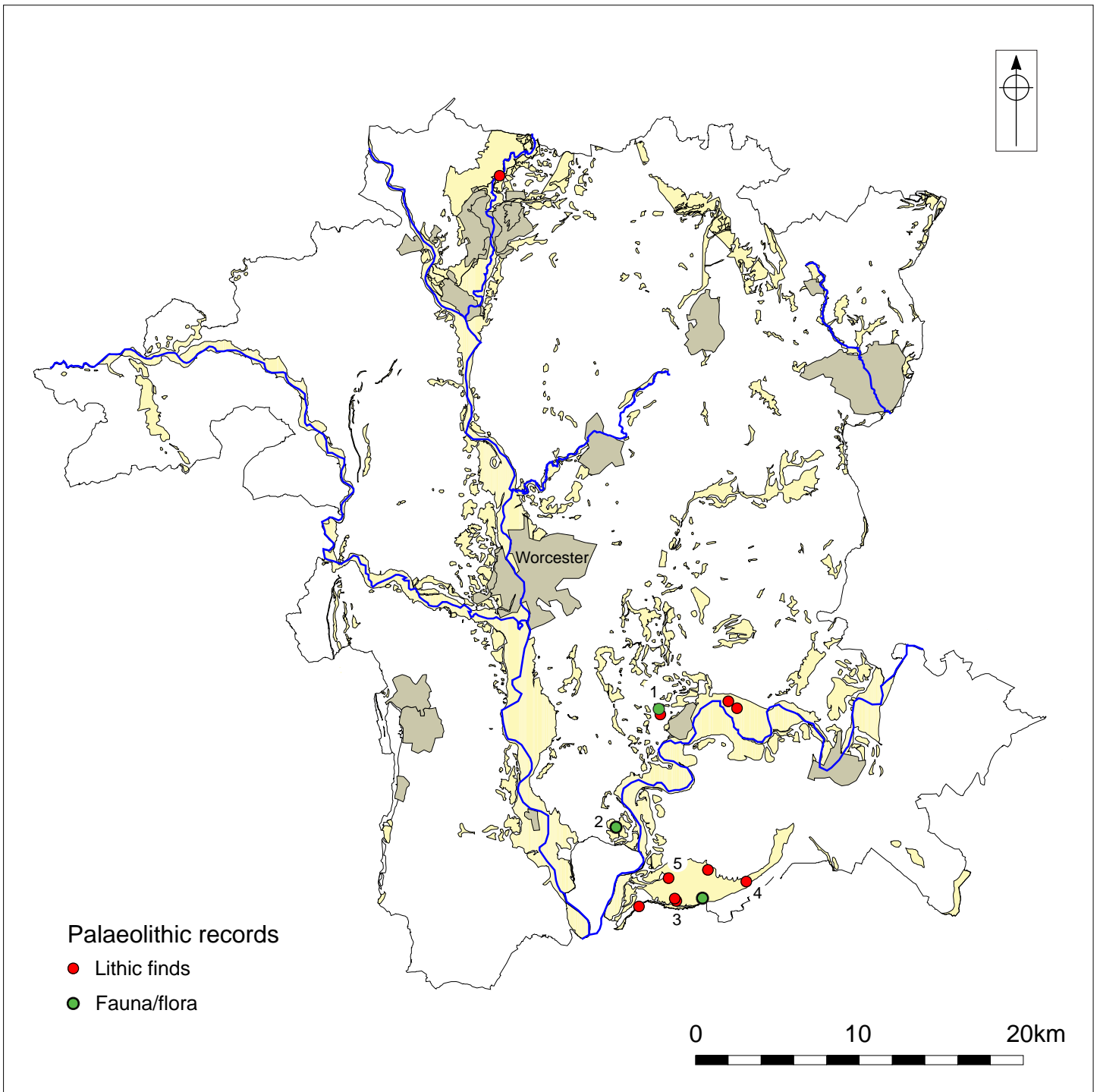


Figure 13: The Palaeolithic period

- 1: Allesborough Beds
- 2: Strensham
- 3: Aston Mill
- 4: Beckford
- 5: Huntsman's Quarry

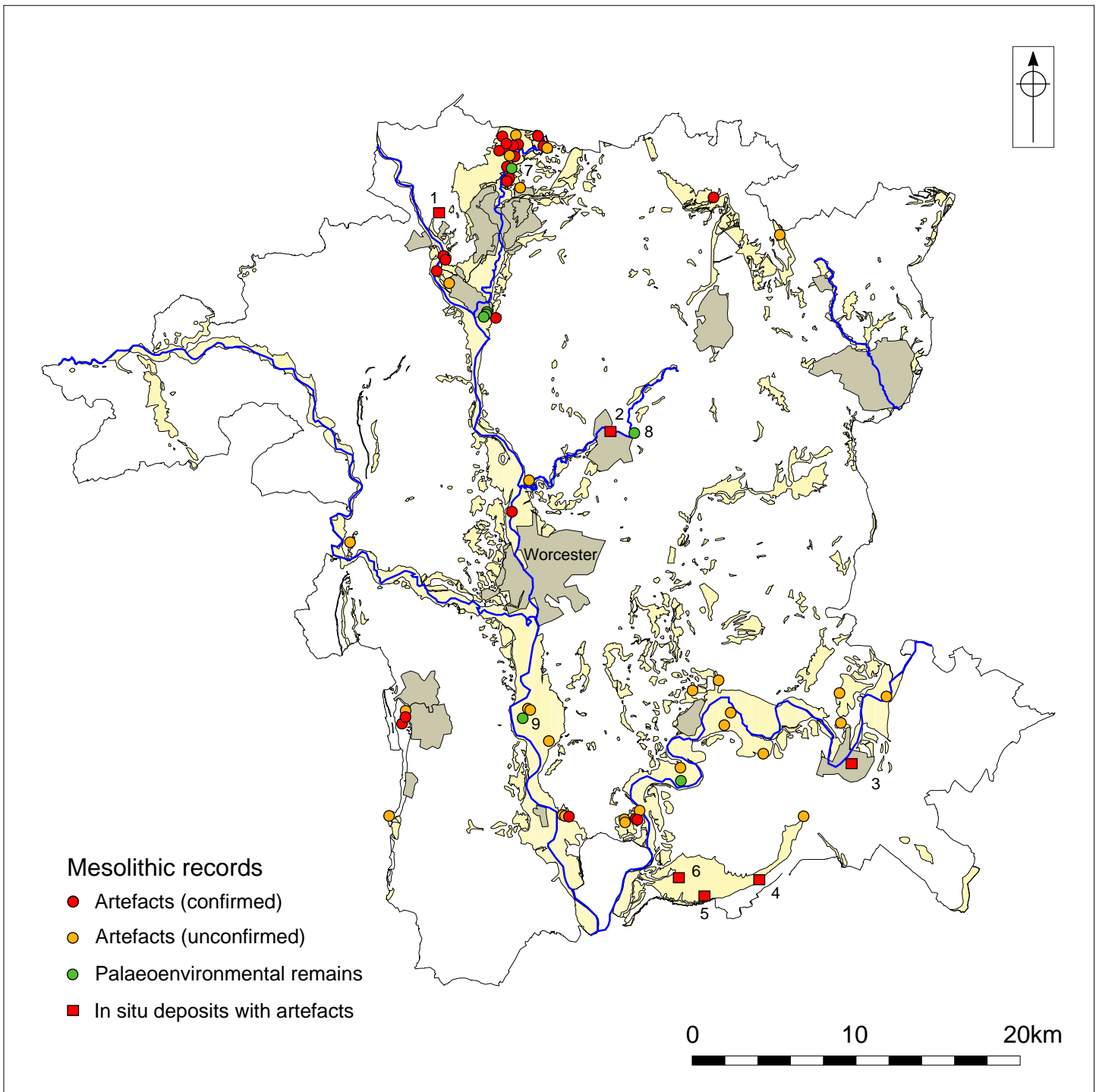


Figure 14: The Mesolithic period

- 1: Lightmarsh Farm
- 2: Droitwich
- 3: Evesham
- 4: Beckford
- 5: Aston Mill
- 6: Huntsman's Quarry, Kemerton
- 7: Cookley
- 8: Impney Farm
- 9: Clifton Quarry

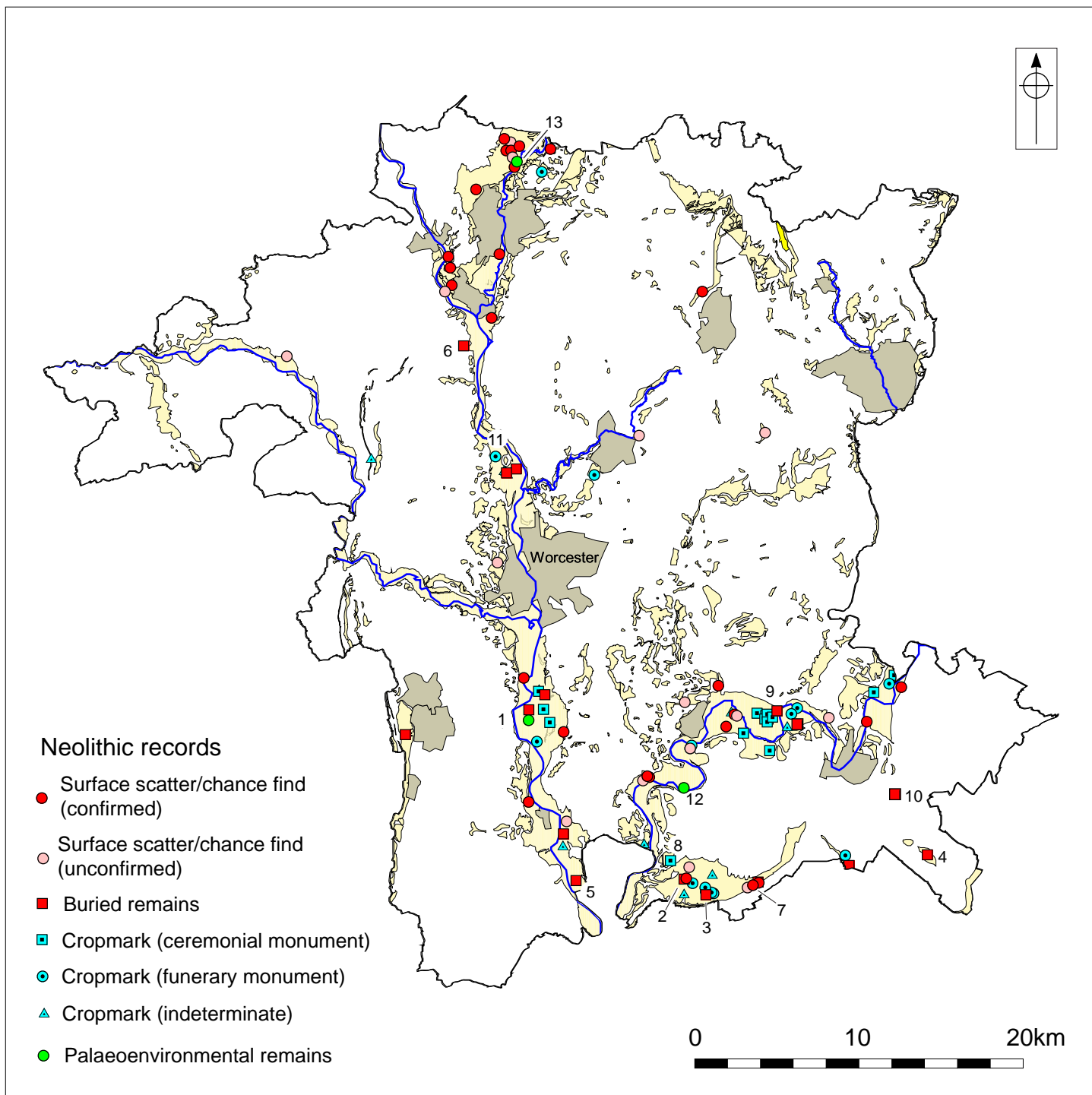


Figure 15: The Neolithic to Earlier Bronze Age period

- | | |
|--------------------------------|--|
| 1: Clifton Quarry | 7: Beckford |
| 2: Huntsman's Quarry, Kemerton | 8: Bredon's Norton |
| 3: Aston Mill, Kemerton | 9: Fladbury (see Figure XX) |
| 4: Broadway | 10: Wormington Farm, Aston Summerville |
| 5: Ripple | 11: Holt |
| 6: Longmore Hill, Astley | 12: Birlingham |
| | 13: Cookley |

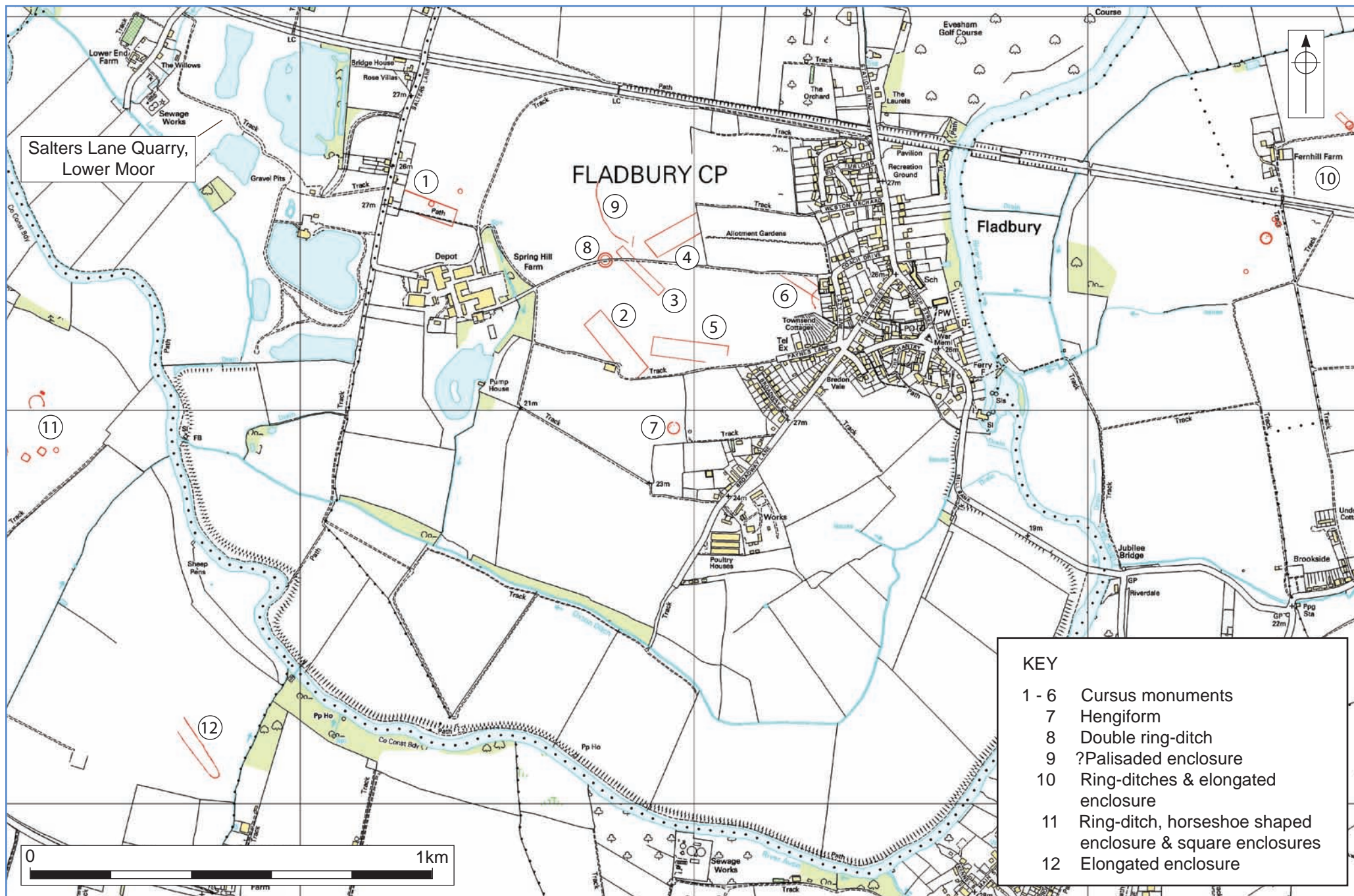


Figure 16: Potential Neolithic and Earlier Bronze Age monuments around Fladbury.

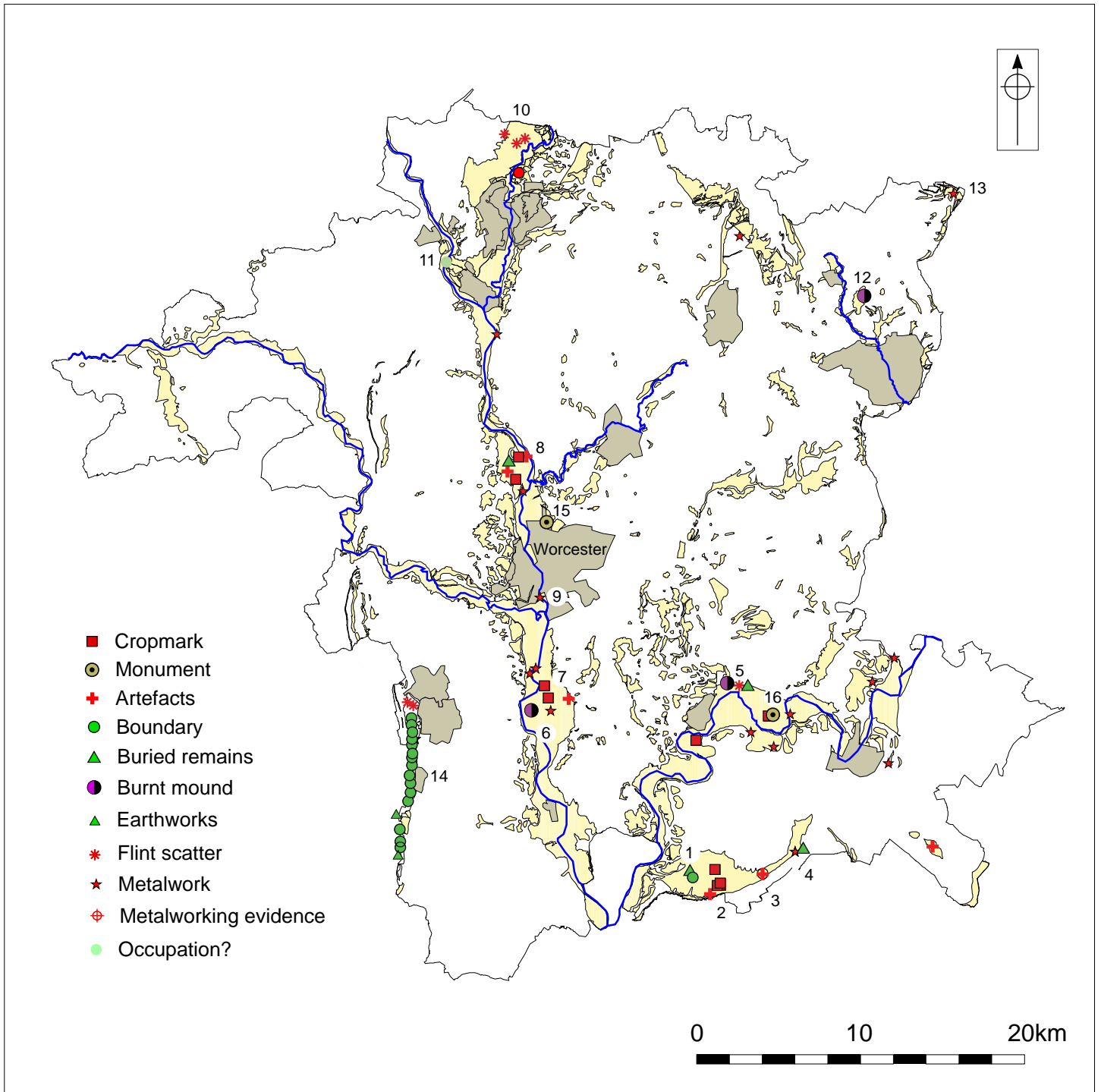


Figure 17: The Middle and Late Bronze Age to Early Iron Age period

- 1: Huntsman's Quarry, Kemerton
- 2: Aston Mill Quarry
- 3: Beckford Quarry
- 4: Ashton under Hill
- 5: Wyre Piddle Bypass
- 6: Clifton Quarry
- 7: Kempsey
- 8: Holt/Grimley

- 9: Diglis
- 10: Wolverley/Cookley
- 11: Blackstone
- 12: Burnt mound, Major's Green
- 13: Looped palstave, Rowney Green
- 14: Malvern Hills
- 15: Perdiswell
- 16: Fladbury

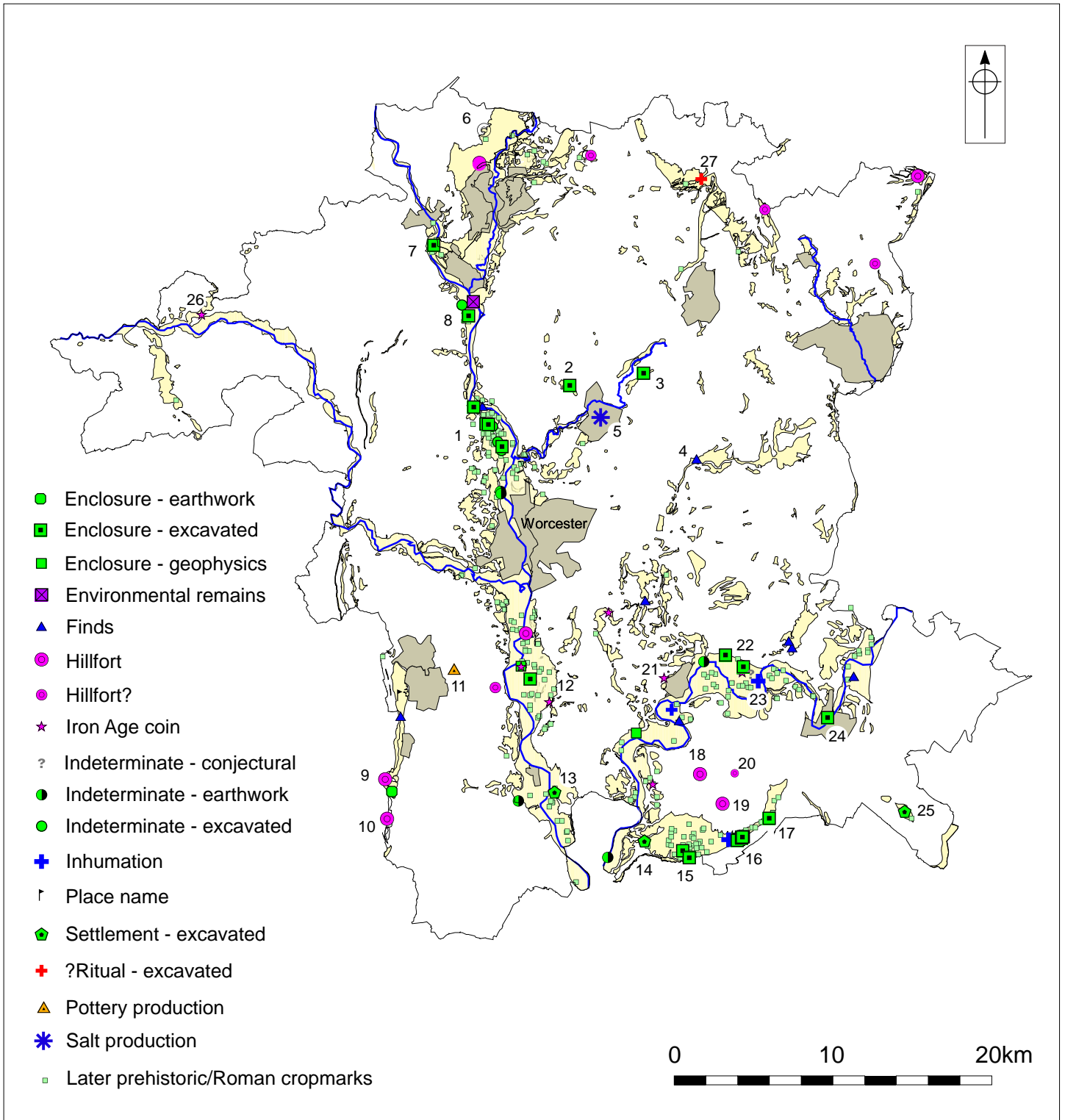


Figure 18: The Middle to Late Iron Age period

- | | | | |
|-------------------------|--------------------|----------------------------|--------------------|
| 1: Holt/Grimley | 9: British Camp | 17: Ashton-under-Hill | 25: Broadway |
| 2: Stonebridge Cross | 10: Midsummer Hill | 18: Bredon Camp | 26: Newnham Bridge |
| 3: Stoke Lane, Wychbold | 11: Malvern | 19: Conderton Camp | 27: Belbroughton |
| 4: Hanbury | 12: Clifton Quarry | 20: Elmley Castle | |
| 5: Droitwich | 13: Ryall Quarry | 21: Hoard | |
| 6: Drakelow | 14: Bredon Farm | 22: Wyre Piddle & Fladbury | |
| 7: Blackstone | 15: Kemerton | 23: Church Lench | |
| 8: Larford Farm | 16: Beckford | 24: Evesham | |

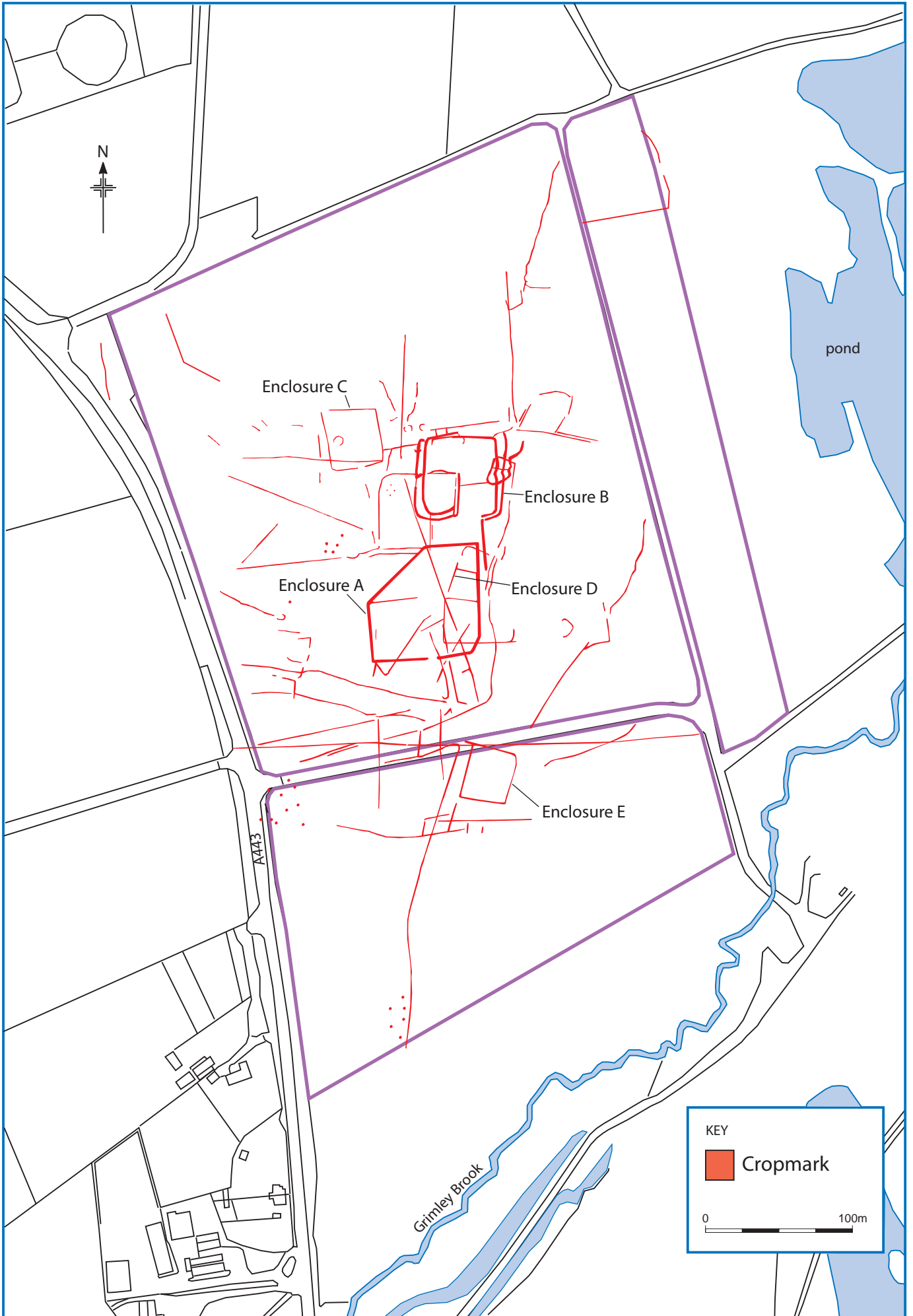


Figure 19: Iron Age and Roman enclosures at Top Barn, Grimley.

© Crown copyright. All rights reserved. Worcestershire County Council 100015914. For reference purposes only. No further copies may be made.

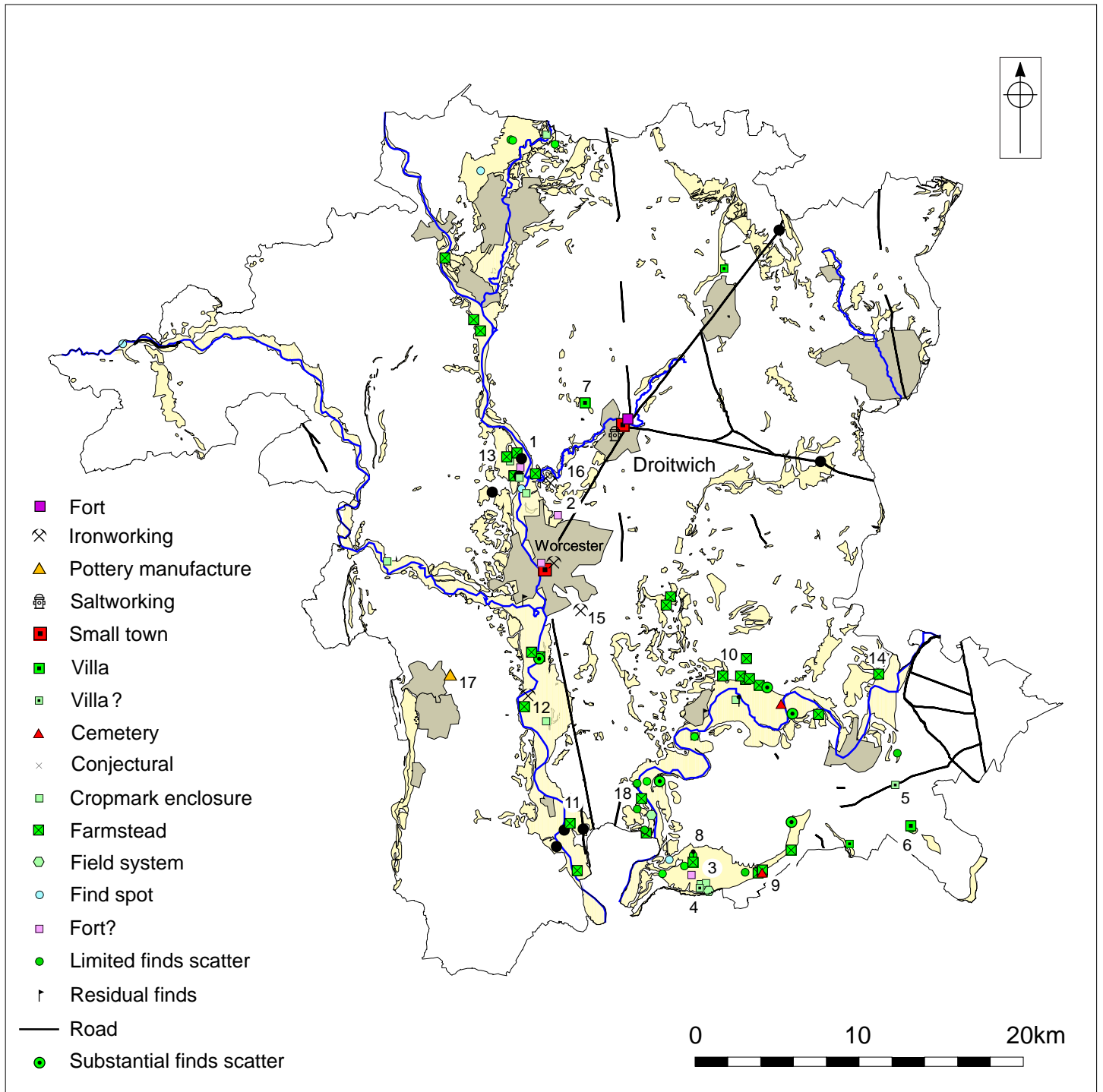


Figure 20: The Roman period

Possible forts

- 1: Grimley
- 2: Perdiswell
- 3: Kemerton

Villas

- 4: Aston Mill
- 5: Wormington Farm
- 6: Childswickham
- 7: Stonebridge Cross

Farmsteads

- 8: Aston Mill and Huntsman's Quarry
- 9: Beckford
- 10: Wyre Piddle, Pinvin, Throckmorton
- 11: Ryall Quarry, Ripple
- 12: Clifton Quarry, Severn Stoke
- 13: Grimley and Holt
- 14: Leylandii House Farm, Norton and Lenchwick

Production sites

- 15: Norton-juxta-Kempsey
- 16: Linacres Farm, Claines
- 17: Malvern

Environment

- 18: Strensham

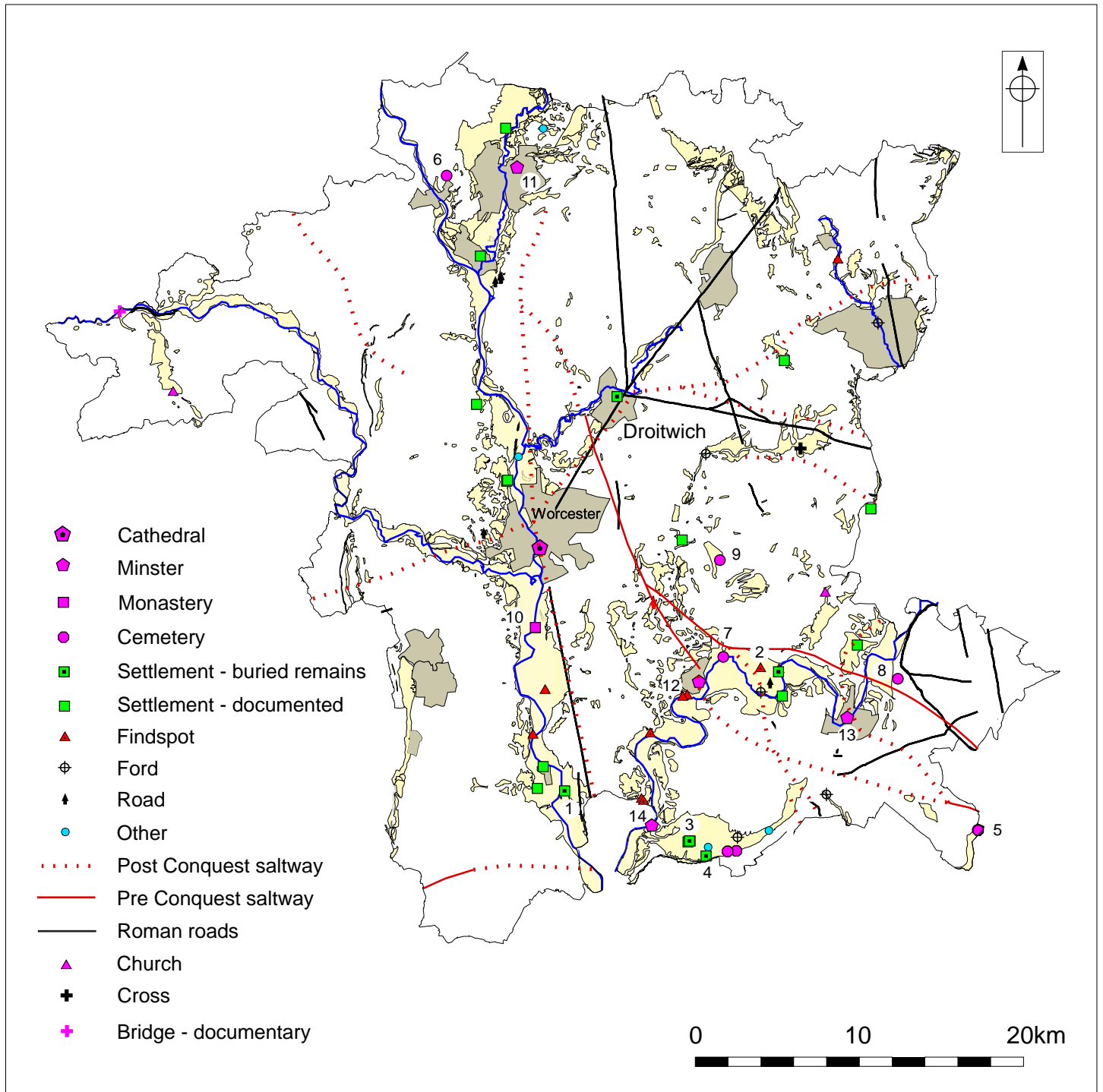


Figure 21: The post-Roman to early medieval period

Rural settlements

- 1: Saxon's Lode, Ryall
- 2: Fladbury
- 3: Kemerton

Cemeteries

- 4: Beckford
- 5: Broadway Hill
- 6: Hoarstone Lane
- 7: Wyre Piddle
- 8: Bennett's Hill, Offenham
- 9: Upton Snodsbury

Monasteries/minsters

- 10: Kempsey
- 11: 'Ismere', Kidderminster
- 12: Pershore
- 13: Evesham
- 14: Bredon

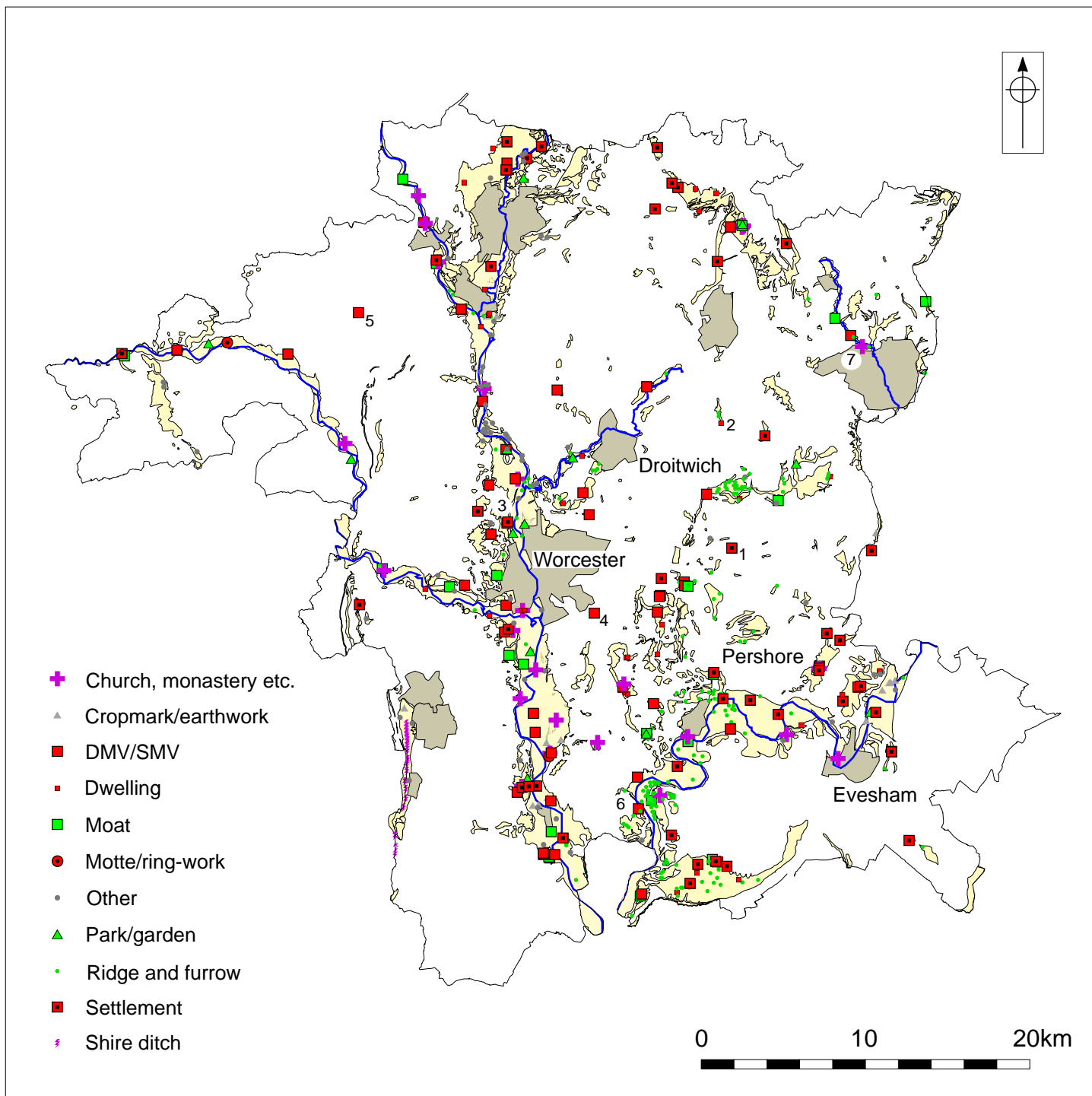


Figure 22: Medieval settlement, landscape and the Church

- 1: Grafton Flyford
- 2: Hanbury
- 3: Hallow
- 4: Whittington
- 5: Rock
- 6: Strensham
- 7: Bordesley Abbey

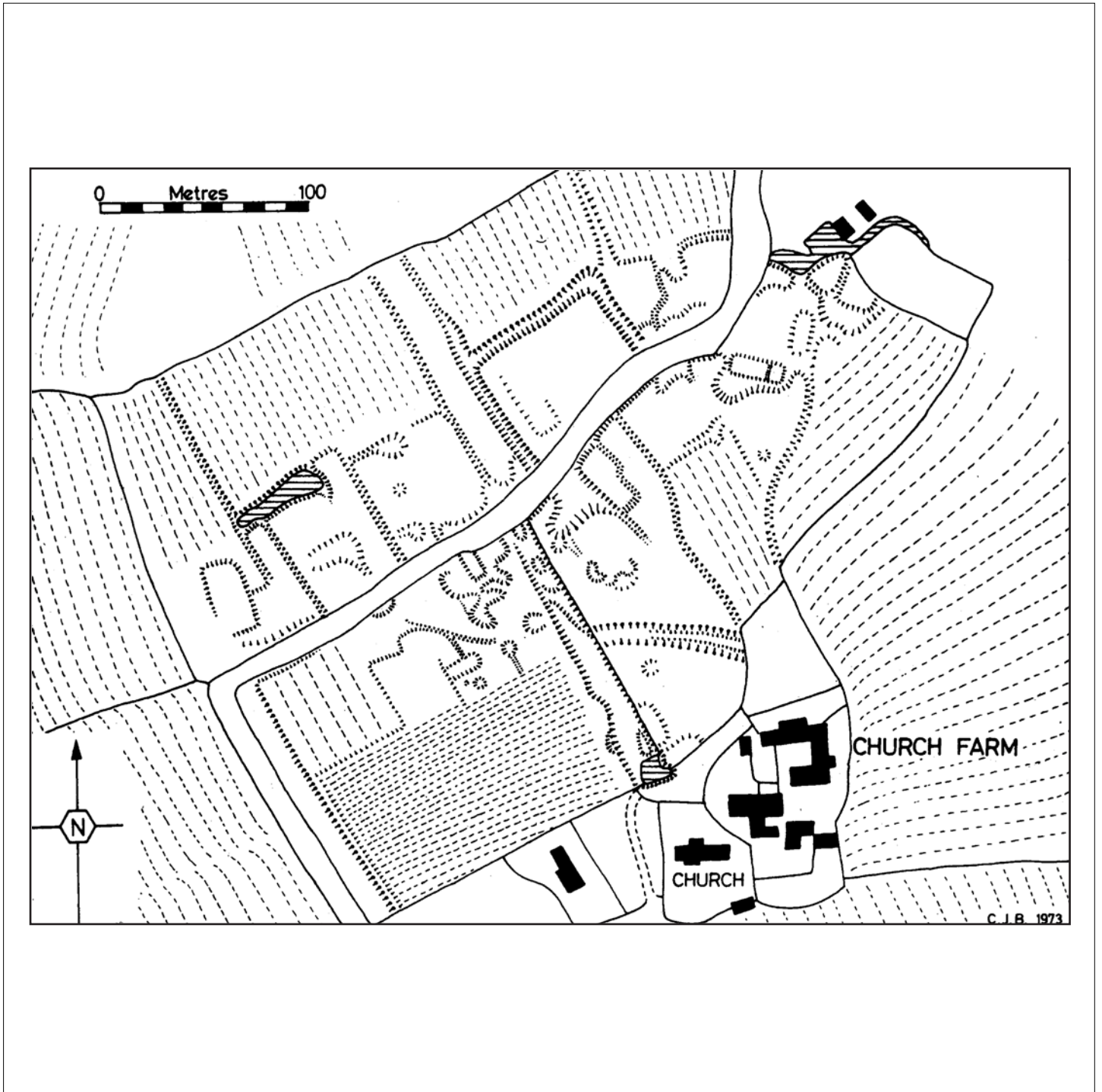


Figure 23: Earthworks at Grafton Flyford (sketch by James Bond)

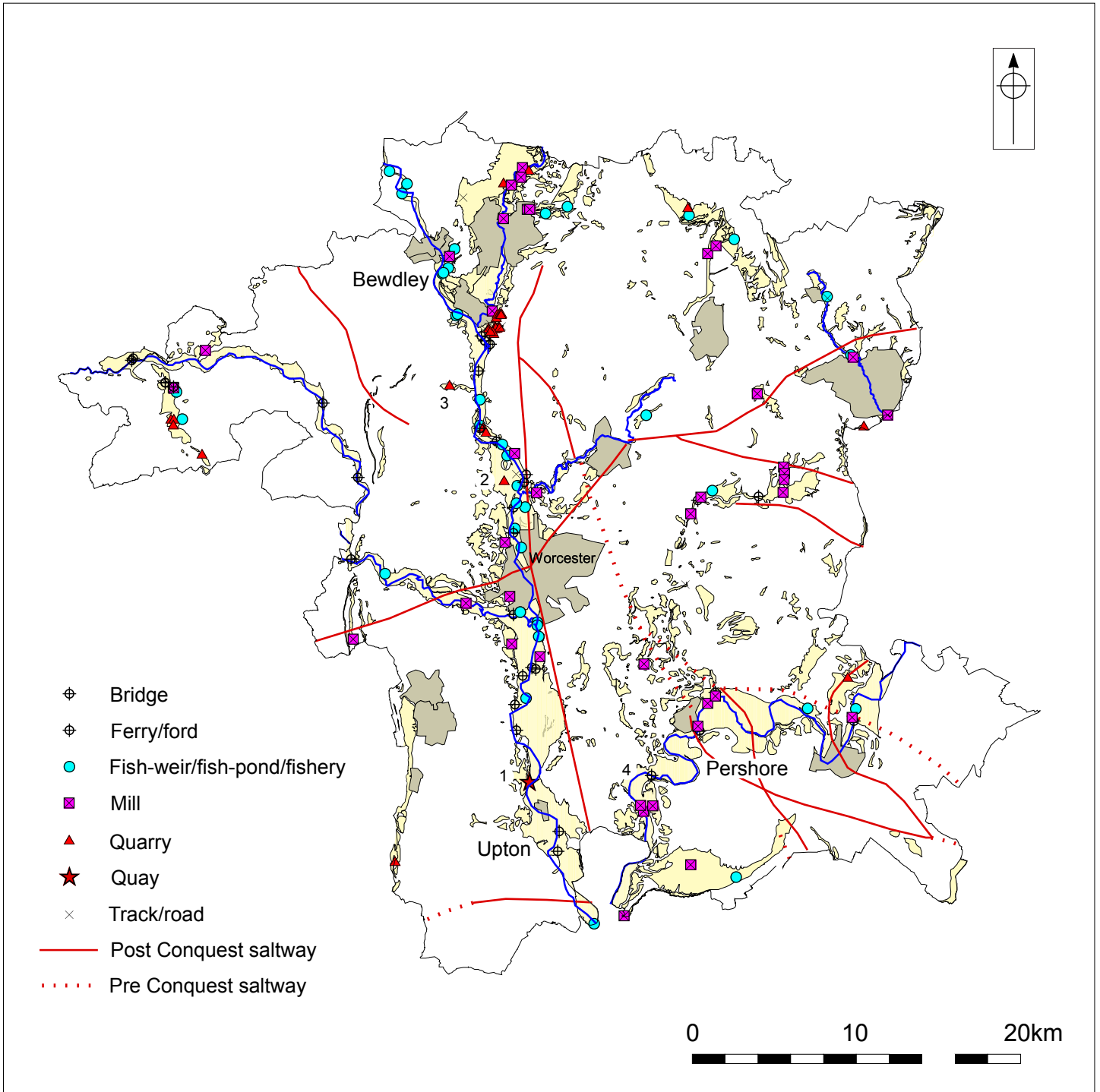


Figure 24: Medieval communications, industry and trade

- 1: Hanley Castle
- 2: Holt
- 3: Ombersley
- 4: Eckington

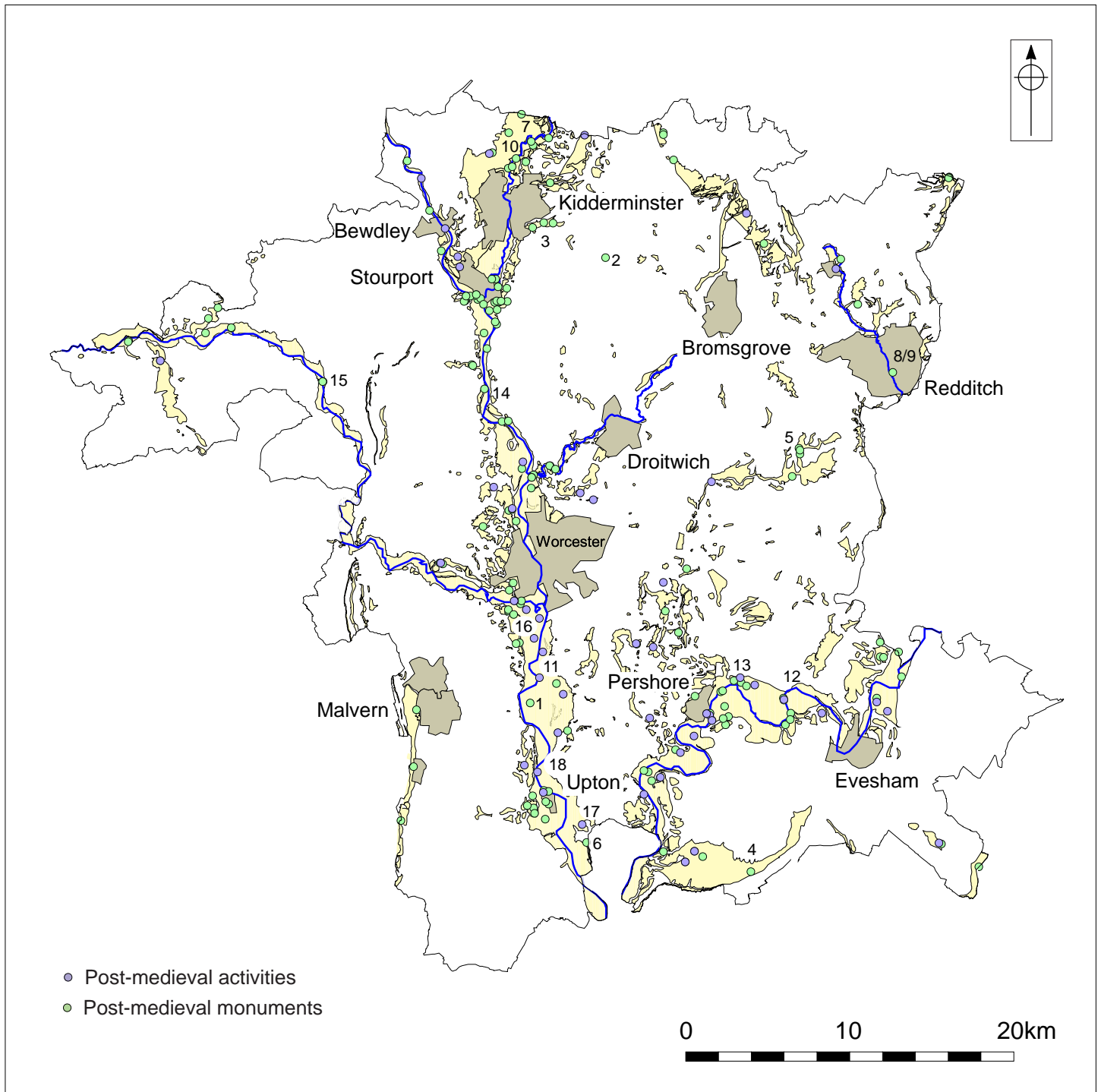


Figure 25: The Early post-medieval period (c1540 - 1750)

- | | |
|--|------------------------------|
| 1: Watermeadow: Clifton & Severn Stoke | 10: The Old Forge, Wolverley |
| 2: Watermeadow: Chaddersley Corbett | 11: Sunken barge |
| 3: Watermeadow: Heathy Mill Farm | 12: Limekiln, Fladbury |
| 4: Beckford Hall | 13: Lock, Wyre Piddle |
| 5: The Court House, Feckenham | 14: Ferry, Ombersley |
| 6: Ripple Hall | 15: Bridge, Stanford |
| 7: Beehcote Mill, Wolverley | 16: Powick battlefield |
| 8: Washford Mill, Redditch | 17: Ripple battlefield |
| 9: The Old Forge, Ipsley, Redditch | 18: Hanley Quay |

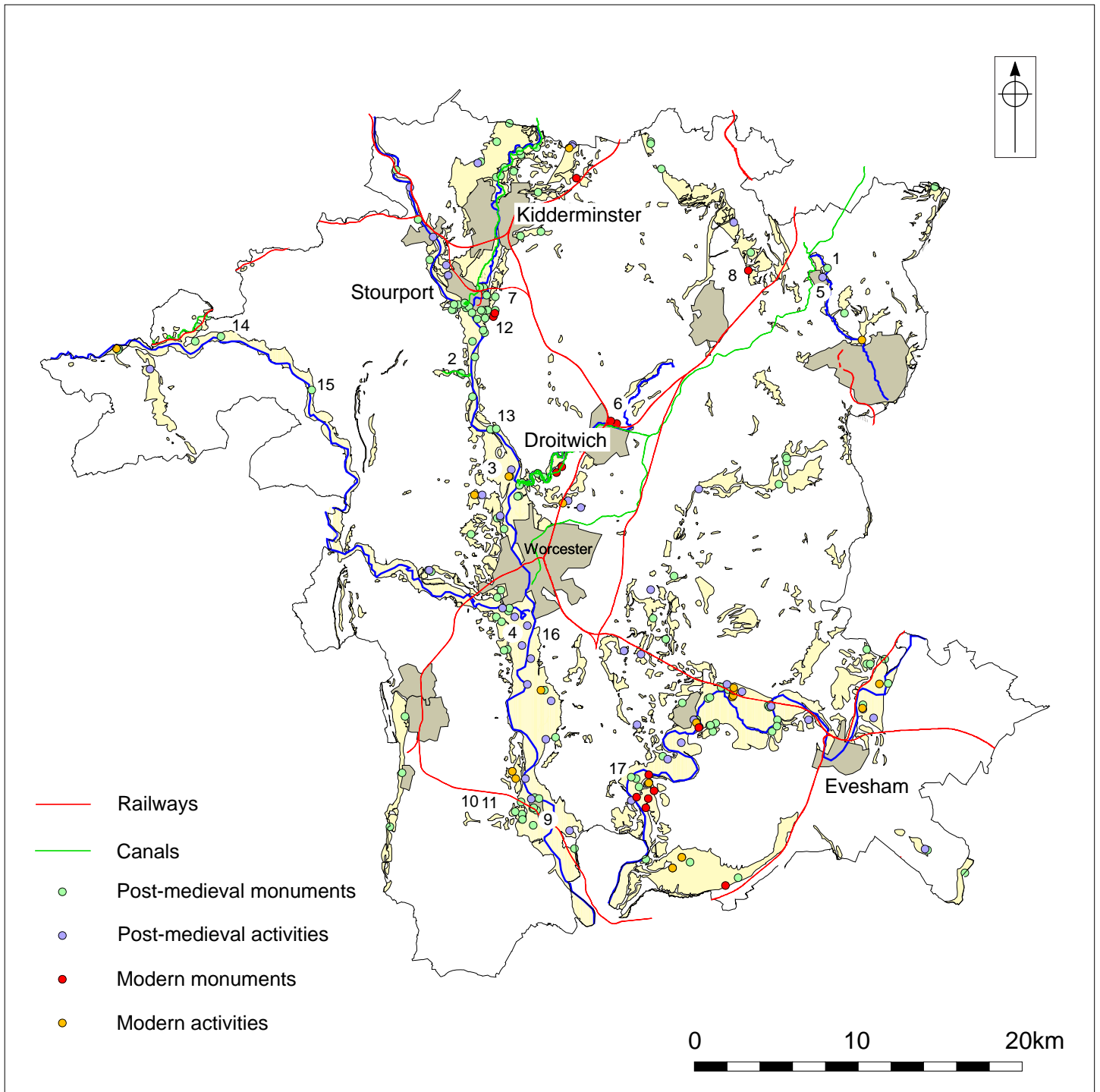


Figure 26: Post-medieval and modern industrial, rural and transport sites (post-1750)

- | | | | |
|---|-------------------------|------------------------|----------------------------|
| 1: Parsonage Mill, Alvechurch | 5: Tannery, Alvechurch | 10: Milestone, Upton | 15: Bridge, Stanford |
| 2: Astley Forge | 6: Lime kiln, Droitwich | 11: Milestone, Upton | 16: Model Farm, Callow End |
| 3: Hop pickers' accomodation, Church Farm | 7: Quarry, Hartlebury | 12: Lock, Lincomb | 17: Floodbank, Eckington |
| 4: Hop kiln, Callow End | 8: Quarry, Bromsgrove | 13: Bridge, Holt Fleet | |
| | 9: Tollhouse, Upton | 14: Bridge, Eastham | |

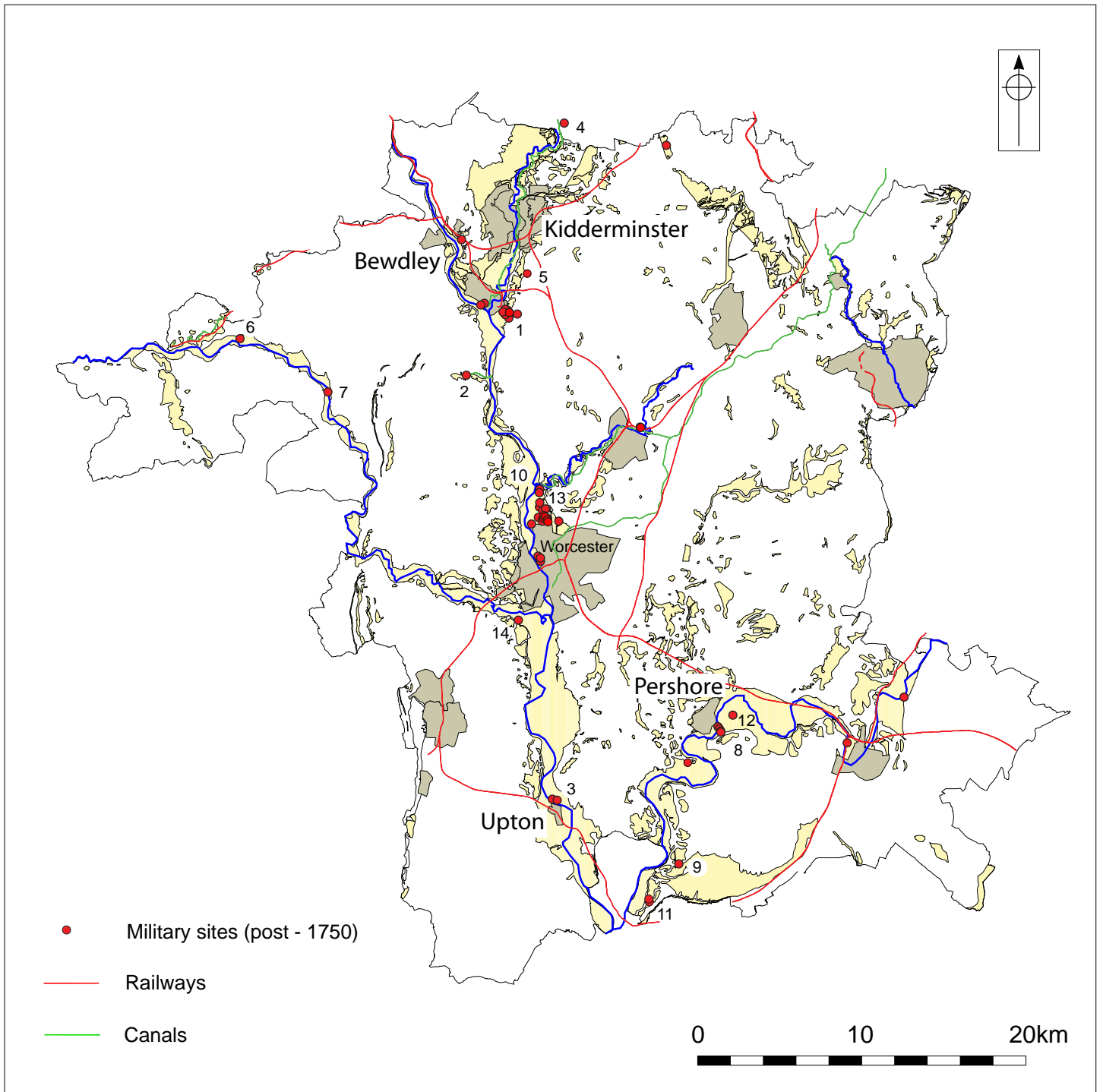


Figure 27: Military sites (post - 1750)

- 1: Rifle range - Hartlebury Common
- 2: Anti-tank defences - Shrawley
- 3: Anti-tank defences - Upton
- 4: Anti-tank defences - Whittington
- 5: Pillbox - Hartlebury
- 6: Pillbox - Eastham
- 7: Pillbox - Stanford Old Bridge

- 8: Spigot mortar base - Pershore
- 9: Spigot mortar base - Bredon
- 10: Hide, air raid sirens, billets, re-fuelling point - Claines
- 11: Searchlight battery - Bredon
- 12: Wick airfield
- 13: Perdiswell airfield
- 14: Cold War nuclear bunker, Powick